

BILANCI ENERJITIK VJETOR 2025 (MWh)

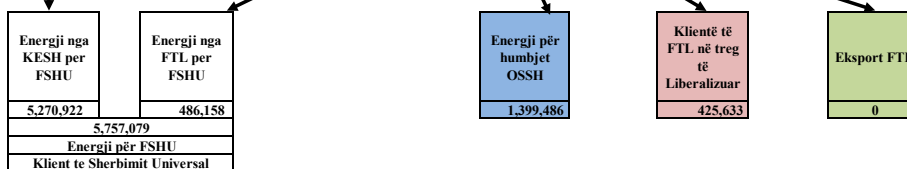
Prodhimi neto publik	
Prodhimi Neto KESH sh.a (përshirë prodhimi i Karavasta Solar sh.p.k.)	
3,711,488	
Blerje KESH në treg të liberalizuar	1,813,145
Prodhim+Blerje	5,524,633
Shkëmbime hyrje KEK	(1,340)
Shkëmbime dalje KEK	
(KEK i devrohet KESH sh.a.)	
Energji për FSHU sh.a nga KESH sh.a	5,270,922

Prodhuar nga PPE në rrjetin e OSSH				Prodhuar nga PPE në rrjetin e OST			Fotovoltaik (në treg të lirë (OST+OSSH))
HEC Lanabregas	HEC.Priv/Kon në Rrjetin e OSSH për FTL	HEC-e në Rrjetin e OSSH në treg të lirë	Fotovoltaik (kont FTL)	HC.Priv/Kon në Rrjetin e OST për FTL	HEC Ashta	Prodhues hidro të pavarur në rrjetin e OST	
17,202	762,007	73,845	134,739	935,380	208,332	1,186,213	438,383

Prodhim neto vendas	7,467,589
---------------------	-----------

Energji e siguruar nga FTL					
Blerje HEC Lanabregas	Blerje HC.Priv/Kon në Rrjetin e OSSH për FTL	Blerje Fotovoltaik në OSSH	Blerje HC.Priv/Kon në Rrjetin e OST për FTL	Blerje Neto Ashta	Energji e blerë në treg të liberalizuar nga FTL+FSHU
17,202	762,007	134,739	935,380	208,332	253,617
					2,311,277

Balanca në interkoneksion (import)	(877,468)
------------------------------------	-----------



KONSUMI I ENERJISË NË SHQIPËRI	8,345,057
--------------------------------	-----------

8,345,057

Burimi: OST sha; KESH sha; OSSH sha; FSHU sha; FTL sha; (OSHEE Group sha)

TABELA ME TE DHËNA PERIODEKË (MUJORE) TE OSHEE SH-a 2025		Janar	Shkurt	Mars	Prill	Maj	Qershor	Korri	Gusht	Shator	Tetor	Nentor	Dhjetor	Progressive
A	Energji Totale e Hyrë në OSHEE Sh-a (MWh)	776,926	700,867	671,425	573,814	520,776	577,300	669,015	656,412	536,602	584,824	649,952	822,279	7,740,191
A.1	Energji e Transmetuar nepermet OST per llogarit te OSHEE Sh-a	644,841	624,626	596,225	492,567	431,240	531,058	640,995	632,585	543,244	543,244	543,244	712,034	6,826,243
A.1.1	Nga EREH, te blerit ne rrejet e OSHEE	448,989	503,286	393,470	273,005	293,804	456,163	386,351	380,396	463,273	441,589	394,111	529,984	5,270,932
A.1.2	Nga OST si import (OSHEE Sh-a (Energji e blerit ne ALPEX per FSHU dhe FTI))	21,875	17,190	21,336	20,256	18,039	16,800	18,645	19,592	20,231	19,887	18,068	21,677	253,617
A.1.3.1	Energji e Transmetuar per Klientet 35/20/10 KV (te dal ne treg te parrregulluar furnizues te tjeret)	12,770	12,389	12,849	13,130	13,723	15,521	17,424	16,351	15,131	14,184	16,168	15,029	172,666
A.1.3.2	Energji e Transmetuar per Klientet 35/20/10KV (furnizues FTI)	35,216	39,421	36,698	27,994	28,600	34,770	39,378	35,729	33,844	38,936	35,373	42,777	424,631
A.1.4	Nga OST per llogarit te Klienteve te OSHEE Sh-a prodhuar nga HEC-et ne rrejet e transmetimit	160,707	93,761	140,569	142,576	107,674	42,984	17,773	16,337	16,689	67,585	187,537	143,347	1,129,038
A.1.5	Nga TFC VLONJA nepermet OST	n/a	n/a	n/a	n/a	n/a	n/a	n/a	n/a	n/a	n/a	n/a	n/a	n/a
A.1.6	Nga Buzica 12 nepermet OST	n/a	n/a	n/a	n/a	n/a	n/a	n/a	n/a	n/a	n/a	n/a	n/a	n/a
A.1.7	Export OSHEE Group Sh-a	-	-	-	-	-	-	-	-	-	-	-	-	-
A.2	Energji elektrike e injektuar ne OST nga Hec-et Lokale	68,728	29,685	62,018	77,682	50,190	22,693	16,246	14,434	11,331	21,391	77,067	57,964	513,229
A.3	Energji e prodhuar dhe e shitur ne rrejet e OSHEE Sh-a	132,484	76,240	105,200	120,247	89,636	46,232	78,020	70,871	72,269	41,480	118,869	112,241	933,948
A.3.1	HEC Lilez/Lanabreges	1,806	1,661	1,883	1,619	1,289	1,316	1,042	863	722	812	1,887	1,303	17,202
A.3.2	Emplanet Private/Me Koncesion	124,708	67,527	93,890	105,911	74,212	28,771	10,608	7,843	7,688	30,111	110,559	100,679	762,007
A.3.3	Barrazet e Rrivozhshme/Koncesion (BRE)	5,971	7,052	9,437	12,727	14,135	16,145	16,370	15,323	13,869	10,557	6,223	7,262	124,739
A.3.4	Prodhim i Injektuar ne OST nga BRE-t ne Treg te Parrregulluar	8,044	7,664	16,022	20,108	13,709	12,084	10,344	9,070	7,882	8,965	17,681	16,010	145,510
B	Energji Totale ne Rrejet e Shperndarjes (MWh)	845,654	730,652	733,443	651,496	599,993	685,261	846,846	846,846	606,015	727,019	880,243	1,851,420	
C	Humbjet Totale ne Rrejet e Shperndarjes (MWh)	156,698	123,295	146,735	102,202	87,746	85,904	111,949	96,686	69,492	105,994	130,611	182,174	1,399,486
C.1	Humbjet teknike ne Zona (MWh)	8,913	8,864	9,963	8,602	5,108	7,587	7,299	7,509	7,068	8,107	10,328	10,542	102,542
C.2	Humbjet teknike ne Zona (MWh)	108,403	85,936	95,705	66,164	55,922	59,013	77,515	73,654	59,273	58,995	75,253	107,472	807,452
C.3	Humbjet ne Teknike ne Zona (MWh)	39,384	30,296	44,978	27,436	26,716	19,303	27,132	15,483	12,151	40,892	45,039	61,683	390,492
C.1	Humbjet Totale ne OSHEE Sh-a (%)	18.59%	16.88%	20.01%	15.69%	15.37%	16.34%	14.41%	14.41%	10.82%	17.49%	17.97%	20.70%	16.96%
C.1.1	Humbjet Teknike ne Zona (%)	1.05%	1.03%	1.33%	1.32%	0.99%	1.26%	1.07%	1.12%	1.29%	1.34%	1.42%	1.49%	1.23%
C.2.1	Humbjet Teknike ne Zona (%)	12.46%	11.60%	12.81%	10.30%	9.89%	9.97%	11.44%	11.12%	9.77%	9.54%	10.51%	12.40%	11.14%
C.3.1	Humbjet ne Teknike ne Zona (%)	4.66%	4.15%	6.13%	4.21%	4.68%	3.22%	3.96%	3.31%	2.21%	7.50%	6.20%	7.01%	4.73%
D	Energjia e përdorur ne Rrejet e Shperndarjes	688,956	607,356	586,708	521,292	454,453	476,164	524,563	528,123	446,893	462,796	560,261	677,057	6,500,334
D.1	Shitur Klienteve FMZ (MWh)	35,951	43,855	41,785	32,485	35,022	39,426	44,907	41,302	38,808	46,535	38,409	69,323	499,209
D.1.1	Shitur Klienteve FMZ Privat (MWh)	17	11	8	2	2	2	2	2	2	2	2	3	77
D.1.2	Shitur Klienteve FMZ Jobjohetore(MWh)	1,609	1,275	1,457	1,547	1,332	1,679	1,790	1,775	1,535	1,504	2,280	19,868	37,952
D.1.3	Shitur Klienteve FMZ 2019/2020 (MWh)	33,325	42,469	40,319	30,938	36,690	37,047	43,116	39,527	35,272	44,031	36,129	49,016	461,190
D.2	Shitur Klienteve Private (MWh)	113,780	108,739	102,897	97,847	100,657	126,485	146,983	141,131	124,754	104,971	105,331	121,401	1,397,971
D.2.1	Shitur nga rrejet i Transmetimit per llogarit te OSHEE Sh-a	-	-	-	-	-	-	-	-	-	-	-	-	-
D.2.2	Shitur per nevojat te veta te OSHEE Sh-a	503	457	447	395	524	353	416	416	370	340	403	446	528
D.2.3	Shitur Klienteve Private (pa shtet per nevojat te veta dhe Ne TL)	113,278	108,282	102,450	97,452	100,133	126,132	146,567	141,941	124,405	104,568	104,568	120,874	1,392,886
D.3	Shitur Klienteve Jobjohetore (MWh)	3,227	3,717	3,773	2,768	2,931	3,597	4,153	3,701	3,111	3,868	3,460	4,371	42,677
D.4	Shitur Klienteve Buzhetore (MWh)	16,884	18	16,215	12,610	11,589	11,451	11,689	12,172	11,844	14,194	15,439	15,111	170,976
D.5	Shitur Klienteve Familjare (MWh)	402,799	427,669	401,919	309,938	36,480	37,947	43,316	39,527	35,272	44,031	36,129	49,016	461,190
D.5.1	Shitur Klienteve Familjare (MWh)	395,059	410,814	393,172	277,304	229,907	247,939	283,734	292,297	254,883	249,089	293,300	383,569	3,516,368
D.5.2	Shitur Klienteve Familjare per Ambientet e Përbashketa	7,740	7,854	7,809	7,463	8,120	8,881	9,433	9,566	9,142	8,765	9,597	9,569	104,114
D.5.3	Dem Ekonomik (aplikimi vendimtar te ERE 232/2019)	100	799	241	8	167	3,155	469	302	284	289	775	-	6,010
D.5.4	Shitur Stacioneve te Kanakave	-	-	-	-	-	-	-	-	-	-	-	-	2,947
D.6	Energji elektrike e injektuar ne OST nga Hec-et Lokale	68,728	29,685	62,018	77,682	50,190	22,693	16,246	14,434	11,331	21,391	77,067	57,964	513,229
D.7	Energji elektrike e prodhuar nga Klientet ne treg te parrregulluar	48,486	51,911	49,547	13,120	11,723	15,321	17,424	16,351	15,131	14,184	16,168	15,029	172,666
E	Faturuar muaj Parardhës (000/leke)	7,870,277	7,613,214	6,856,520	6,220,273	5,608,594	5,199,892	5,790,824	6,720,277	6,755,281	6,609,144	5,542,305	6,124,923	75,910,522
F	Arketimet e muajit aktual FSHU (000/leke)	7,855,225	7,113,817	6,555,731	6,281,245	5,812,516	5,312,207	5,889,437	6,336,689	6,856,428	5,902,914	5,726,929	6,236,179	75,124,415
F.1	Arketimet per faturat te vete te vete aktual	37,177	5,080,295	4,038,751	4,033,408	3,740,026	3,354,341	4,033,900	4,430,451	4,613,238	3,879,547	3,735,683	4,491,238	46,122,088
F.2	Arketimet per faturat e tjera te vete aktual	7,418,048	2,031,522	2,506,984	397,781	354,228	419,587	282,767	418,139	307,261	296,378	219,561	197,560	13,248,517
F.3	Arketimet e muajit aktual FSHU (%)	94.7%	92.4%	95.6%	101.0%	102.6%	102.2%	101.7%	94.2%	100.2%	100.2%	97.6%	101.8%	99.0%
F.1.1	Arketimet per faturat te vete te vete aktual (%)	0.3%	69.7%	62.3%	64.8%	65.7%	63.5%	68.6%	68.6%	68.9%	64.5%	64.5%	70.7%	61.3%
F.1.2	Arketimet per faturat te tjera te vete aktual (%)	0.0%	21.0%	21.0%	29.8%	26.6%	27.3%	22.5%	28.6%	30.8%	30.8%	26.6%	29.2%	29.2%
F.1.3	Arketimet per faturat e tjera te vete aktual (%)	94.3%	25.7%	11.8%	6.4%	4.3%	6.2%	4.3%	6.2%	4.5%	5.3%	5.8%	5.2%	17.3%
G	Faturuar muaj Raportues (000/leke)	7,613,214	6,856,520	6,220,273	5,608,594	5,199,892	5,790,824	6,720,277	6,755,281	6,609,144	5,542,305	6,124,923	7,544,788	75,585,078
1	Nr. Konsumatoreve gjithesej (Nr.)	1,345,385	1,352,089	1,353,518	1,347,453	1,357,975	1,359,521	1,362,461	1,361,195	1,364,515	1,367,151	1,366,282	1,368,281	1,368,283
2	Fatura te emetuara me lexim konsum (Nr.)	1,040,627	1,046,812	1,055,780	1,055,132	1,071,086	1,078,099	1,090,666	1,106,075	1,095,160	1,087,766	1,084,963	1,080,780	1,078,956
3	Sasia e energjise se faturuar me lexim konsum (MWh)	-	-	-	-	-	-	-	-	-	-	-	-	-
4	Fatura te emetuara me lexim "0" (Nr.)	-	-	-	-	-	-	-	-	-	-	-	-	-
5	Nr. Faturave te emetuara pa lexim (energjie e pa matur) (Nr.)	306,610	308,308	300,546	298,624	290,791	283,735	276,133	260,747	276,136	289,104	285,824	283,441	3,460,001
6	Sasia e energjise se faturuar si energji e pamatur (MWh)	-	-	-	-	-	-	-	-	-	-	-	-	-
7	Nr. Faturave te emetuara pa lexim (dem ekonomik) (Nr.)	9	49	17	4	32	43	34	15	24	24	69	24	344
8	Sasia e faturuar si dem ekonomik (MWh)	100	799	243	8	167	3,155	469	302	284	289	775	358	6,368
9	Nr. Faturave per te cilat është arketuar kamati vonesë (Nr.)	329,189	300,948	249,779	244,127	242,086	271,238	244,029	246,649	247,490	288,642	290,049	266,320	4,438,536
10	Vlera e Kamat vonesave te arketuara (000/leke)	83,512	65,438	69,466	78,374	71,457	75,781	85,772	122,293	93,915	99,896	93,		

BILANCI OSSH, FSHU, FTL 2025		
1	ENERGJI TOTALE E HYRË NË RRJETIN E OSSH-së	7,740,191
2	Energji e shitur nga KESH sh.a për FSHU sha	5,270,922
3	ENERGJI NË HYRJE E BLERE NGA FTL (OSHEE sha)	2,311,277
3.1	Blerë nga Prodhimi i PPE në rrjetin e OSSH	913,948
3.2	Blerë nga Prodhimi i PPE në rrjetin e OST	1,143,712
3.3	Blerë në Treg të Liberalizuar nga FTL	253,617
4	ENERGJI NË DALJE NGA FTL (OSHEE sha)	2,311,277
4.1	Energji nga FTL për FSHU	486,158
4.2	Energji nga FTL për humbjet OSSH	1,399,486
4.3	Energji e shitur nga FTL në treg të liberalizuar	425,633
4.4	Eksport i FTL	-
7	ENERGJI QE KALON NË RRJETIN E OSSH-së	8,251,420
7.1	Energji totale e transmetuar nga OST në rrjetin e Shpërndarjes	7,186,262
7.2	Energji e transmetuar direkt në rrjetin e Shpërndarjes nga impiantet e lidhur në rrjetin e Shpërndarjes	553,930
7.3	Energjia e ngitur në rrjetin e transmetimit nga centralet e lidhura në rrjetin e OSSH	511,229
8	Humbje totale në rrjetin e OSSH-së (%)	16.96

Burimi: OSSH sha; FSHU sha; FTL sha / OSSH sha

	Janar	Shkurt	Mars	Prill	Maj	Qershor	Korrik	Gusht	Shtator	Tetor	Nëntor	Dhjetor	12- Mujori	
HYRJE														
Dhene nga H/C e KESH ne rrjetin e Transmetimit	349,473	443,656	307,939	278,267	284,632	243,071	247,010	231,722	213,986	285,022	333,974	492,739	3,711,488	10,288,931
Dhene nga H/C e me perparesi ne rrjetin e Transmetimit (+Qami)	140,383	70,723	122,435	127,492	95,216	34,727	9,341	6,214	5,861	52,303	158,147	115,002	937,844	
Energji nga Hec-et Lokale levruar ne Rrjetin e Transmetimit (me ngritje)	68,728	29,685	62,018	77,682	50,190	22,693	16,246	14,434	13,331	21,191	77,067	57,964	511,229	
Gjenerim KURUM (prodhuess i pavarur)	53,232	40,364	29,562	36,017	24,621	16,806	17,601	15,506	12,300	16,465	46,066	52,014	360,556	
Gjenerim Spv Blue 1 (prodhuess i pavarur)	4,841	5,597	8,175	12,691	14,663	16,663	16,567	13,775	11,261	8,020	4,187	4,390	120,830	
Gjenerim Nova Solar	4,990	5,277	7,510	10,721	11,683	13,479	14,584	13,343	11,340	8,904	5,141	6,125	113,099	
Gjenerim Erseka Solar Park 1	1,556	2,344	3,596	4,392	5,062	6,289	6,676	5,590	4,864	3,143	1,714	2,038	47,264	
HEC ASHTA (prodhuess i pavarur Kontr.me OSHEE)	22,530	23,307	19,341	16,817	15,969	9,907	9,151	9,716	9,966	17,348	26,978	27,302	208,333	
HEC BANJE (prodhuess i pavarur)	21,913	12,269	9,991	19,166	10,877	6,183	6,601	7,566	4,492	2,712	20,205	40,379	162,354	
HEC MOGLICE (prodhuess i pavarur)	17,352	17,452	25,814	29,655	27,614	13,181	2,676	3,790	4,323	2,776	43,707	91,537	279,878	
HEC Gojan		434	4,276	4,499	4,298	1,201	261	1,015	521	3,809	8,020	4,055	32,390	
HEC Gostimat				6,338	5,401	1,462	346	220	722	3,755	13,792	10,539	42,575	
HEC Bishnica 1,2							14	176	153	464	1,589	1,174	3,570	
Gjenerim Spv Blue 2								5,332	9,371	7,445	4,267	4,490	30,906	
Gjenerim Sunny Side Solar								745	17,784	14,646	7,762	7,982	48,919	
HEC PESHQESH-T1/637 (prodhuess i pavarur)	16,307	8,297	9,149	9,236	8,512	3,113	1,200	1,513	1,165	6,759	14,558	9,641	89,450	
HEC FANGU (prodhuess i pavarur)	39,446	25,474	13,214	7,386	9,526	6,200	5,843	3,838	7,005	18,666	42,170	34,208	212,976	
Importi(Hyre) nga Linjat e Interkonjeksionit	243,193	238,618	285,376	214,400	203,933	306,955	424,965	449,318	385,623	271,000	174,571	177,318	3,375,270	
DALJE														
Humbjet ne Transmetim	18,815	13,933	18,340	17,063	14,403	12,274	15,172	15,746	14,354	14,342	21,073	17,954	193,470	10,288,931
Transmetuar ne Rrjetin e Spherndarjes	705,125	646,647	612,191	510,630	467,103	541,222	646,595	637,602	519,546	554,508	591,199	753,894	7,186,262	
Kliente ne treg te hapur (TL)	19,520	15,256	34,177	35,932	48,846	43,707	38,490	36,787	40,685	41,286	24,394	32,317	411,397	
Eksporti (Dale) nga Linjat e Interkonjeksionit	240,483	247,662	243,688	291,136	241,843	104,727	78,826	93,678	139,484	134,290	347,252	334,732	2,497,802	
Humbjet ne Transmetim	18,815	13,933	18,340	17,063	14,403	12,274	15,172	15,746	14,354	14,342	21,073	17,954	193,470	
Humbjet ne Transmetim ne %	1.91	1.51	2.02	2.00	1.87	1.75	1.95	2.01	2.01	1.93	2.14	1.58	1.90	

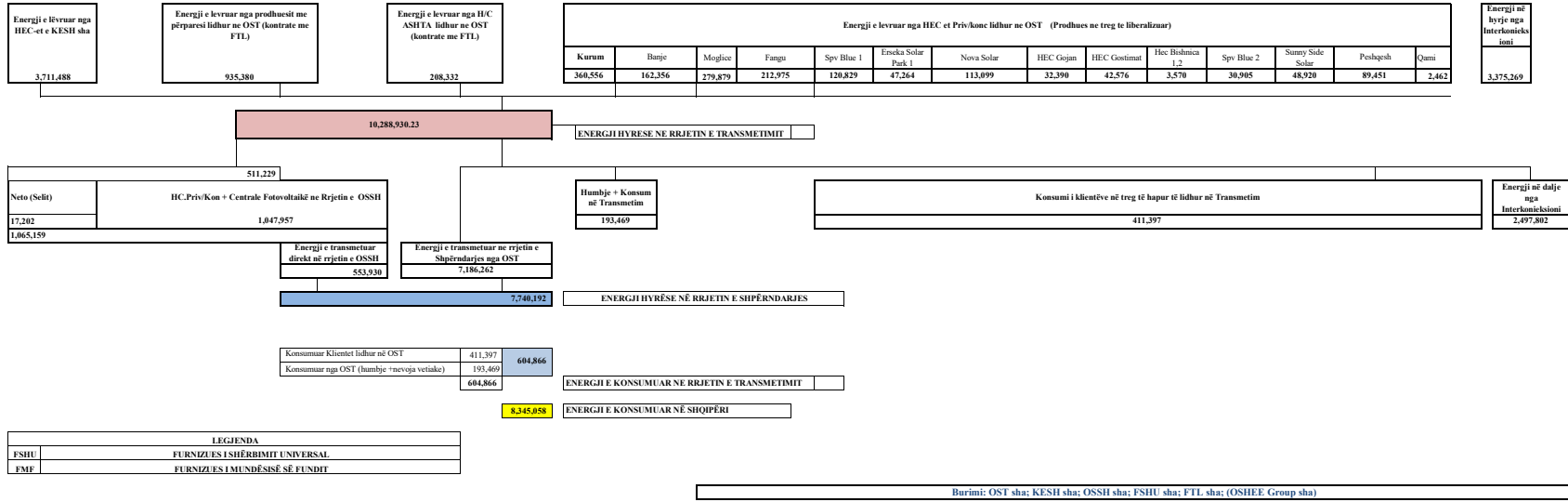
Burimi: OST sha

Bilanci i Energjisë Elektrike për vitin 2025

OST sha	Njësia e Matjes	Janar	Shkurt	Mars	Prill	Maj	Qershor	Korrik	Gusht	Shtator	Tetor	Nëntor	Dhjetor	Shuma 2025 [MWh]
	MWh													
Prodhimi nga KESH GEN në Rrjetin e Transmetimit		349,473	443,656	307,939	278,267	284,631.85	243,071	247,010	231,722	213,986	285,022	333,974	492,739	3,711,488.5
Prodhimi nga HEC/HPP e vogla në Rrjetin e Transmetimit		68,728	29,685	62,018	77,682	50,190	22,693.4	16,246	14,434	13,331	21,191	77,067	57,964	511,229.0
Prodhimi nga PPE/IPP e mëdha në Rrjetin e Transmetimit		140,383	70,723	122,435	127,492	95,216	34,726.5	9,341	6,214	5,861	52,303	158,147	115,002	937,843.4
Prodhimi nga HEC Peshqesh		16,307	8,297	9,149	9,236	8,512	3,113	1,200	1,513	1,165	6,759	14,558	9,641	89,450.6
Prodhimi nga HEC Banja		21,913	12,269	9,991	19,166	10,877	6,183	6,601	7,566	4,492	2,712	20,205	40,379	162,354.6
Prodhimi nga HEC FANG		39,446	25,474	13,214	7,386	9,526	6,200	5,843	3,838	7,005	18,666	42,170	34,208	212,975.4
Prodhimi nga HEC Moglicë		17,352	17,452	25,814	29,655	27,614	13,181	2,676	3,790	4,323	2,776	43,707	91,537	279,878.4
Prodhimi nga Nova Sola Tr 1/322		4,990	5,277	7,510	10,721	11,683	13,479	14,584	13,343	11,340	8,904	5,141	6,125	113,098.7
Prodhimi nga Erseka Solar Park 1 Tr 1/328		1,556	2,344	3,596	4,392	5,062	6,289	6,676	5,590	4,864	3,143	1,714	2,038	47,263.8
Prodhimi nga Spv Blue 1 T1/139		4,841	5,597	8,175	12,691	14,663	16,663	16,567	13,775	11,261	8,020	4,187	4,390	120,829.5
Prodhimi nga Spv Blue 2 T1/605									5,332	9,371	7,445	4,267	4,490	30,905.5
Prodhimi nga Hec Gojan T1/338			434	4,276	4,499	4,298	1,201	261	1,015	521	3,809	8,020	4,055	32,390.4
Prodhimi nga Hec Gostimat					6,338	5,401	1,462	346	220	722	3,755	13,792	10,539	42,575.5
Prodhimi nga Hec BISHNICA 1,2								14	176	153	464	1,589	1,174	3,570.4
Prodhimi nga Sunny Side Solar									745	17,784	14,646	7,762	7,982	48,919.6
Prodhimi nga HEC Ashta		22,530	23,307	19,341	16,817	15,969	9,907	9,151	9,715	9,966	17,348	26,978	27,302	208,331.6
Prodhimi nga KURUM (Ulez-Shkopet&Bistrica1,2)		53,232	40,364	29,562	36,017	24,621	16,806	17,601	15,506	12,300	16,465	46,066	52,014	360,555.9
Eksporti (-) nga Linjat e Interkonjeksionit	D	240,483	247,662	243,688	291,136	241,843	104,727	78,826	93,678	139,484	134,290	347,252	334,732	2,497,801.7
Importi (+) nga Linjat e Interkonjeksionit	R	243,193	238,618	285,376	214,400	203,933	306,955	424,965	449,318	385,623	271,000	174,571	177,318	3,375,269.4
Balanca (Total Interkonjeksioni)	11=(R-D)	(2,710)	9,044	(41,688)	76,736	37,910	(202,228)	(346,138)	(355,640)	(246,139)	(136,710)	172,681	157,414	(877,467.7)
Energjia Totale në Marrje	12=(1+2+3+4+5+6+7+8+9+10+R)	983,943	923,499	908,396	854,760	772,196	701,930	779,083	783,814	714,068	744,427	983,917	1,138,898	10,288,930.2
Humbjet në Rrjetin e Transmetimit (përfshirë Nevojat Vetjake)	13	18,815	13,933	18,340	17,063	14,403	12,274	15,172	15,746	14,353	14,342	21,073	17,954	193,469.0
Humbjet në Rrjetin e Transmetimit %	14=13/12	1.91	1.51	2.019	1.996	1.865	1.749	1.947	2.009	2.010	1.927	2.142	1.576	1.9
Energjia Totale në Dhënie	15=(12-13)	965,128	909,565	890,056	837,698	757,793	689,656	763,911	768,067	699,715	730,085	962,844	1,120,944	10,095,461.2
<i>Transmetuar në Linjat e Interkonjeksionit</i>	16=D	240,483	247,662	243,688	291,136	241,843	104,727	78,826	93,678	139,484	134,290	347,252	334,732	2,497,801.7
<i>Transmetuar tek Klientët e Kualifikuar</i>		19,520	15,256	34,177	35,932	48,846	43,707	38,490	36,787	40,685	41,286	24,394	32,317	411,397.5
<i>EL220-L220KURUM/337</i>		380.4	315.0	306	291	267.116	259.40	283	277	306.51	399.14	343.41	396.41	3,824.5
<i>F.ARRES-T3/653</i>		1,428.5	1,335.3	1,447	1,374	1,462.101	1,310.76	1,358	1,352	1,322.06	1,388.19	1,364.02	1,367.89	16,510.7
<i>Titan T1,T2</i>		6,949.7	9,016.5	8,126	7,161	8,563.312	7,830.68	10,622	7,752	10,094.09	8,266.82	4,063.88	8,057.36	96,504.0
<i>FUSHE KRUIJE 220kV-T2/058</i>		3,593.5	2,052.7	12,290	10,357	11,976.224	10,854.41	8,548	10,145	11,397.08	11,147.85	7,530.09	9,765.09	109,656.3
<i>NST 220/6,3Colacent-T1/336</i>		524.6	638.9	2,191	855	2,069.467	987.94	1,809	1,260	1,794.69	1,133.88	1,051.07	1,495.85	15,811.1
<i>NST i GSA EL 110kV-T1/694</i>		5,676.9	837.4	8,701	8,878	9,302.009	9,065.88	128	165	148.55	3,175.28	9,058.80	9,457.76	64,594.9
<i>NST i GSA EL 110kV-T2/960</i>		-	-	-	-	-	-	-	-	-	-	-	-	-
<i>NST i CWI Albania T1/148</i>		566.9	552.9	601	546.85	534.017	559.82	594	436	575.36	613.40	479.08	445.85	6,504.7
<i>NST i AES EL 110kV-T1/690</i>		-	1.5	-	-	-	-	-	22	6.33	-	-	-	30.2
<i>NST i AES EL 110kV-T2/692</i>		179.8	161.9	149	147	7,182.227	5,503.30	7,462	7,306	7,203.50	7,237.63	152.40	172.08	42,857.4
<i>HEC Moglice T1,T2,T3</i>		0.5	0.5	1	1	0.914	25.44	0.1	0.14	0.17	0.31	0.53	0.21	30.8
<i>HEC Peshqesh-T1/633</i>		1.1	12.3	12	3.82	8.638	21.17	34	32	31.27	22.25	2.64	13.13	195.0
<i>Lajthiza T1/742</i>		19.6	146.6	146	30.87	48.442	340.19	617	700	535.79	418.27	42.52	183.34	3,228.1
<i>Nova Sola Tr 1/322</i>		51.7	44.0	44	37.86	37.034	35.67	37.244	42	43.85	47.46	53.68	675.97	1,150.0
<i>Erseka Solar Park 1 Tr 1/328</i>		23.2	18.4	18	15.68	14.026	12.63	13.363	15	16.26	19.19	20.46	21.78	208.0
<i>Spv Blue 1 T1/139</i>		30.0	25.7	26	22.07	19.860	17.79	18	21	25.21	29.85	32.51	34.49	302.5
<i>Spv Blue 2 T1/605</i>									23	46.38	56.02	59.02	65.15	249.4
<i>Hec Gojan T1/338</i>			0.5	3	0.01	0.428	5.56	16	8	8.41	3.45	0.02	0.01	45.4
<i>Hec Gostima 5 T1/342</i>					1.25	0.054	0.01	2	5	2.43	0.04	0.04	0.00	10.1
<i>Hec Gostima 6 T1/340</i>					0.62	0.436	0.02	6	8	2.96	0.08	0.17	0.01	18.6
<i>HEC Ashta1-T1,HEC Ashta2-T1,</i>		0.0	-	-	0.01	0.010	1.21	10.3	10	1.22	0.58	0.00	-	23.1
<i>HEC Banje T1,T2</i>		11.0	13.1	16	12.96	27.325	14.39	13	16.8	14.07	17.26	9.38	3.96	170.0
<i>HEC Fang-T1,T2,</i>		6.434	14.9	31	26.7	28.239	37.31	45	53.7	44.27	36.10	4.17	23.70	351.8
<i>Hec BISHNICA 1,2</i>									0.0	-	0.00	0.00	0.02	0.0
<i>Sunny Side Solar</i>									11.2	57.56	58.50	58.56	73.49	259.3
<i>Gjenerim KURUM</i>		0.177	0.2	8	3.82	8.172	12.85	20	21.31	21.50	13.91	0.65	-	110.4
<i>FERRO KROM-F1,F2,F3,F4</i>		76.2	67.4	62	6.164	7,296.209	6,810.84	6,852	7,105	6,985.49	7,201.02	66.56	63.86	48,751.0
<i>Transmetuar në rrjetin e Shpërndarjes</i>		705,125	646,647	612,191	510,630	467,103	541,222	646,595	637,602	519,546	554,508	591,199	753,894	7,186,262.0
<i>Transmetuar në rrjetin e Shpërndarjes 110 kV</i>		616,948	566,410	534,217	451,186	411,477	477,454	569,841	563,474	458,607	486,589	519,212	657,165	6,312,580.5
<i>Transmetuar në rrjetin e Shpërndarjes 35 kV</i>		42,073	39,209	37,459	29,840	30,291	34,355	42,271	41,029	34,033	37,458	37,526	48,933	454,477.6
<i>Transmetuar në rrjetin e Shpërndarjes 6, 10, 20 kV</i>		46,104	41,028	40,514	29,604	25,335	29,413	34,483	33,099	26,906	30,461	34,461	47,796	419,203.9

Burimi: OST sha

PARAQITJA SKEMATIKE E FLUXEVE TE ENERGJISE NE SISTEMIN ELEKTRO-ENERGJTIK SHQIPETAR VITI 2025 (MWh)



HEC "Nishina"	1.36	"Nishina Energy" sh.p.k	35kV	0	0	50	32	27	0	0	0	0	0	0	0	1	31	70	85	292	1263
HEC "Bilina"	1.36	"Bilina Energy" sh.p.k	10kV	1291	155	100	110	0	0	0	0	0	0	0	0	0	0	0	0	0	0
HEC "Cavran 1"	1.90	"Cavran Energy" sh.p.k	35kV	451	144	607	212	240	24	0	0	0	0	0	0	0	186	709	270	2,032	7,327
HEC "Cavran 2"	1.90	"Cavran Energy" sh.p.k	35kV	421	177	308	272	163	85	0	0	0	0	0	0	0	32	217	258	2,073	7,327
HEC "Kosovë e Re"	1.12	"Kosovë Energy" sh.p.k	35kV	221	21	232	27	27	0	0	0	0	0	0	0	0	37	27	31	2,091	7,327
HEC "Kosovë e Vjetër"	1.12	"Kosovë Energy" sh.p.k	35kV	819	184	1,003	1,047	711	365	179	147	135	303	1,568	1,172	7,080	0	0	0	0	0
HEC "Holla Porocan"	3.30	HEC Keshi Holla Porocan sh.p.k	35kV	1,879	714	1,829	1,808	999	317	123	134	150	674	2,123	1,241	0	0	0	0	0	0
HEC "Tuzi"	0.32	"Tuzi Energy" sh.p.k	35kV	75	87	84	186	70	22	11	13	0	14	75	95	417	0	0	0	0	0
HEC "Tuzi 2"	1.00	"Tuzi Energy" sh.p.k	35kV	526	458	458	458	458	458	458	458	458	458	458	458	458	458	458	458	458	458
HEC "Kosovë"	1.70	"Kosovë Energy" sh.p.k	35kV	774	358	784	820	345	105	0	0	0	0	21	553	539	4,230	0	0	0	0
HEC "Kosovë 2"	1.70	"Kosovë Energy" sh.p.k	35kV	1,129	574	1,129	1,129	1,129	1,129	1,129	1,129	1,129	1,129	1,129	1,129	1,129	1,129	1,129	1,129	1,129	1,129
HEC "Tuzi 3"	1.70	"Tuzi Energy" sh.p.k	35kV	257	369	384	389	389	370	270	163	145	234	222	208	398	3,510	0	0	0	0
HEC "Dobri Do"	2.40	"Dobri Do Energy" sh.p.k	35kV	299	195	233	247	162	30	0	0	0	0	0	0	0	0	0	0	0	0
HEC "Kosovë 3"	0.77	"Kosovë Energy" sh.p.k	35kV	179	95	179	188	95	0	0	0	0	0	0	0	0	0	0	0	0	0
HEC "Dobri Do 2"	1.10	"Dobri Do Energy" sh.p.k	35kV	2,711	1,927	2,418	2,342	1,400	241	0	0	0	0	1,111	2,429	1,826	17,373	0	0	0	0
HEC "Nishina 2"	1.40	"Nishina Energy" sh.p.k	35kV	285	175	255	275	185	0	0	0	0	0	0	0	0	0	0	0	0	0
HEC "Zarec"	0.55	"Zarec Energy" sh.p.k	35kV	689	353	621	811	214	199	7	0	0	0	44	492	466	4,127	0	0	0	0
HEC "Zarec 2"	1.32	"Zarec Energy" sh.p.k	35kV	435	325	248	277	198	100	0	0	0	0	74	399	389	2,378	0	0	0	0
HEC "Shtegim 1"	0.36	"Shtegim Energy" sh.p.k	35kV	29	25	231	285	156	0	0	0	0	0	0	0	0	0	0	0	0	0
HEC "Shtegim 2"	1.26	"Shtegim Energy" sh.p.k	35kV	131	64	116	173	145	27	0	0	0	0	0	0	0	0	0	0	0	0
HEC "Shtegim 3"	0.46	"Shtegim Energy" sh.p.k	35kV	67	14	113	81	82	0	0	0	0	0	0	0	0	0	0	0	0	0
HEC "Kosovë 4"	1.14	"Kosovë Energy" sh.p.k	35kV	959	154	1,113	1,113	1,113	1,113	1,113	1,113	1,113	1,113	1,113	1,113	1,113	1,113	1,113	1,113	1,113	1,113
HEC "Kosovë 5"	0.97	"Kosovë Energy" sh.p.k	10kV	320	165	223	254	210	166	61	23	47	53	404	449	2,475	0	0	0	0	0
HEC "Kosovë 6"	0.63	"Kosovë Energy" sh.p.k	10kV	112	64	85	227	166	59	11	0	0	0	0	0	0	0	0	0	0	0
HEC "Shtegim 4"	2.68	"Shtegim Energy" sh.p.k	10kV	927	331	454	703	142	17	0	0	0	0	0	0	0	0	0	0	0	0
HEC "Kosovë 7"	0.29	"Kosovë Energy" sh.p.k	10kV	12	0	0	0	0	0	0	0	0	0	0	0	0	0	0	0	0	0
HEC "Kosovë 8"	0.27	"Kosovë Energy" sh.p.k	10kV	127	47	227	166	110	53	23	16	0	0	0	0	0	0	0	0	0	0
HEC "Kosovë 9"	1.30	"Kosovë Energy" sh.p.k	10kV	1,106	544	686	906	615	141	0	0	0	0	0	0	0	0	0	0	0	0
HEC "Kosovë 10"	2.00	"Kosovë Energy" sh.p.k	35kV	1,379	419	737	927	667	390	4	0	0	11	655	1,219	5,099	6,627	0	0	0	0
HEC "Kosovë 11"	1.90	"Kosovë Energy" sh.p.k	35kV	966	544	966	966	966	966	966	966	966	966	966	966	966	966	966	966	966	966
HEC "Kosovë 12"	1.90	"Kosovë Energy" sh.p.k	35kV	747	415	556	686	335	210	61	57	66	134	941	854	5,841	0	0	0	0	0
HEC "Kosovë 13"	1.22	"Kosovë Energy" sh.p.k	35kV	282	163	345	372	246	113	0	0	0	0	0	0	0	0	0	0	0	0
HEC "Kosovë 14"	0.38	"Kosovë Energy" sh.p.k	10kV	146	145	146	151	139	0	0	0	0	0	0	0	0	0	0	0	0	0
HEC "Kosovë 15"	0.50	"Kosovë Energy" sh.p.k	10kV	120	113	89	99	89	84	74	18	5	46	93	122	963	0	0	0	0	0
HEC "Kosovë 16"	1.99	"Kosovë Energy" sh.p.k	35kV	982	486	1,468	1,468	1,468	1,468	1,468	1,468	1,468	1,468	1,468	1,468	1,468	1,468	1,468	1,468	1,468	1,468
HEC "Kosovë 17"	0.80	"Kosovë Energy" sh.p.k	10kV	121	32	36	40	40	0	0	0	0	0	0	0	0	0	0	0	0	0
HEC "Kosovë 18"	1.75	"Kosovë Energy" sh.p.k	35kV	1,477	255	251	762	651	238	41	0	0	0	0	0	0	0	0	0	0	0
HEC "Kosovë 19"	2.00	"Kosovë Energy" sh.p.k	35kV	966	544	966	966	966	966	966	966	966	966	966	966	966	966	966	966	966	966
HEC "Kosovë 20"	1.94	"Kosovë Energy" sh.p.k	35kV	1,414	569	1,446	1,648	811	76	0	0	0	0	0	0	0	0	0	0	0	0
HEC "Kosovë 21"	1.94	"Kosovë Energy" sh.p.k	35kV	1,414	569	1,446	1,648	811	76	0	0	0	0	0	0	0	0	0	0	0	0
HEC "Kosovë 22"	1.04	"Kosovë Energy" sh.p.k	10kV	686	477	233	339	281	64	0	0	0	0	0	0	0	0	0	0	0	0
HEC "Kosovë 23"	1.04	"Kosovë Energy" sh.p.k	10kV	228	99	127	127	127	0	0	0	0	0	0	0	0	0	0	0	0	0
HEC "Kosovë 24"	2.00	"Kosovë Energy" sh.p.k	35kV	300	245	241	262	249	106	0	0	0	0	0	0	0	0	0	0	0	0
HEC "Kosovë 25"	0.84	"Kosovë Energy" sh.p.k	10kV	424	272	406	462	303	27	0	0	0	0	0	0	0	0	0	0	0	0
HEC "Kosovë 26"	2.00	"Kosovë Energy" sh.p.k	35kV	1,210	867	1,210	1,210	1,210	1,210	1,210	1,210	1,210	1,210	1,210	1,210	1,210	1,210	1,210	1,210	1,210	1,210
HEC "Kosovë 27"	1.08	"Kosovë Energy" sh.p.k	10kV	567	328	395	566	218	41	0	0	0	0	0	0	0	0	0	0	0	0
HEC "Kosovë 28"	1.08	"Kosovë Energy" sh.p.k	10kV	260	75	277	177	177	0	0	0	0	0	0	0	0	0	0	0	0	0
HEC "Kosovë 29"	1.86	"Kosovë Energy" sh.p.k	35kV	968	387	736	966	536	187	0	0	0	0	0	0	0	0	0	0	0	0
HEC "Kosovë 30"	1.97	"Kosovë Energy" sh.p.k	35kV	1,428	1,231	1,428	1,411	1,428	1,428	1,428	1,428	1,428	1,428	1,428	1,428	1,428	1,428	1,428	1,428	1,428	1,428
HEC "Kosovë 31"	1.52	"Kosovë Energy" sh.p.k	35kV	4,844	2,435	3,417	5,008	2,411	1,911	0	0	0	0	0	0	0	0	0	0	0	0
HEC "Kosovë 32"	1.14	"Kosovë Energy" sh.p.k	35kV	1,513	910	963	923	814	390	111	53	155	234	967	1,136	8,149	0	0	0	0	0
HEC "Kosovë 33"	0.62	"Kosovë Energy" sh.p.k	10kV	121	0	0	0	0	0	0	0	0	0	0	0	0	0	0	0	0	0
HEC "Kosovë 34"	1.26	"Kosovë Energy" sh.p.k	35kV	2,710	814	1,454	2,244	1,738	158	0	0	0	0	0	0	0	0	0	0	0	0
HEC "Kosovë 35"	2.28	"Kosovë Energy" sh.p.k	35kV	249	152	451	293	244	390	30	24	13	71	567	265	2,429	0	0	0	0	0
HEC "Kosovë 36"	1.91	"Kosovë Energy" sh.p.k	35kV	618	147	656	671	284	21	0	0	0	0	0	0	0	0	0	0	0	0
HEC "Kosovë 37"	1.90	"Kosovë Energy" sh.p.k	35kV	979	271	501	431	354	77	1	0	0	0	0	0	0	0	0	0	0	0
HEC "Kosovë 38"	1.72	"Kosovë Energy" sh.p.k	35kV	679	244	218	247	218	0	0	0	0	0	0	0	0	0	0	0	0	0
HEC "Kosovë 39"	2.00	"Kosovë Energy" sh.p.k	35kV	944	399	979	1,214	1,049	415	79	48	67	267	1,021	909	7,399	0	0	0	0	0
HEC "Kosovë 40"	1.94	"Kosovë Energy" sh.p.k	35kV	1,414	569	1,446	1,648	811	76	0	0	0	0	0	0	0	0	0	0	0	0
HEC "Kosovë 41"	1.94	"Kosovë Energy" sh.p.k	35kV	1,414	569	1,446	1,648	811	76	0	0	0	0	0	0	0	0	0	0	0	0
HEC "Kosovë 42"	1.04	"Kosovë Energy" sh.p.k	10kV	686</																	

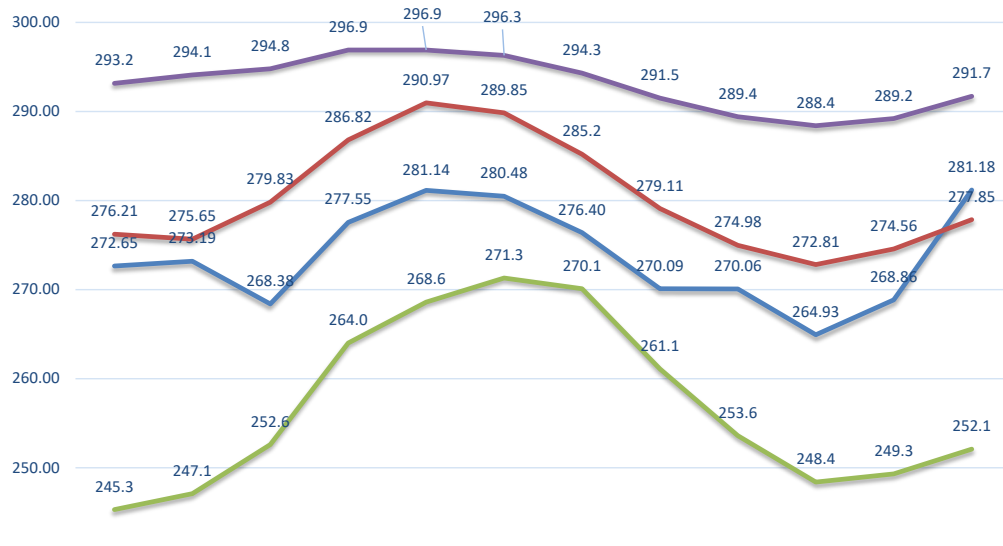
NIVELI I FIERZËS 1991-2025

	Janar	Shkurt	Mars	Prill	Maj	Qershor	Korrik	Gusht	Shtator	Tetor	Nentor	Dhjetor
2016	289.9	274.1	291.8	296.5	296.2	295.6	290.5	285.4	283.3	288.4	288.9	281.6
2017	271.5	274.1	280.9	278.7	281.6	272.4	270.2	268.0	271.0	264.6	269.6	289.9
2018	289.7	274.1	295.0	296.5	296.4	296.0	294.0	287.5	277.9	270.2	266.5	267.3
2019	267.3	274.1	272.7	279.9	289.9	292.7	287.6	278.5	274.2	268.6	273.2	275.6
2020	271.6	272.0	283.5	288.6	293.6	291.7	284.6	276.5	273.5	274.1	268.7	272.7
2021	291.7	294.1	292.6	294.3	296.7	291.7	282.7	274.3	271.3	267.7	267.8	275.1
2022	270.7	268.3	260.7	282.5	289.0	288.0	281.5	270.4	271.4	267.9	281.7	291.7
2023	293.2	286.4	291.5	295.6	296.1	296.3	291.4	281.3	270.8	263.5	280.1	284.5
2024	286.5	287.4	287.4	292.6	296.1	294.9	289.4	280.6	271.9	270.6	265.1	267.3
2025	272.7	273.2	268.4	277.6	281.1	280.5	276.4	270.1	270.1	264.9	268.9	281.2

	Janar	Shkurt	Mars	Prill	Maj	Qershor	Korrik	Gusht	Shtator	Tetor	Nentor	Dhjetor
Niveli mesatar mujor viti 2025	272.65	273.19	268.38	277.55	281.14	280.48	276.40	270.09	270.06	264.93	268.86	281.18
Niveli mesatar mujor vitet 1991-2024	276.21	275.65	279.83	286.82	290.97	289.85	285.2	279.11	274.98	272.81	274.56	277.85
Minimumi mesatar mujor vitet 1991-2024	245.3	247.1	252.6	264.0	268.6	271.3	270.1	261.1	253.6	248.4	249.3	252.1
Maksimumi mesatar mujor vitet 1991-2024	293.2	294.1	294.8	296.9	296.9	296.3	294.3	291.5	289.4	288.4	289.2	291.7

Niveli mesatar minimal mujor vitet 1991-2024
Niveli mesatar maksimal mujor vitet 1991-2024

NIVELI I FIERZËS VITI 2025 KRAHASUAR ME (Min,Maks dhe Mesataren historike) (mmnd)



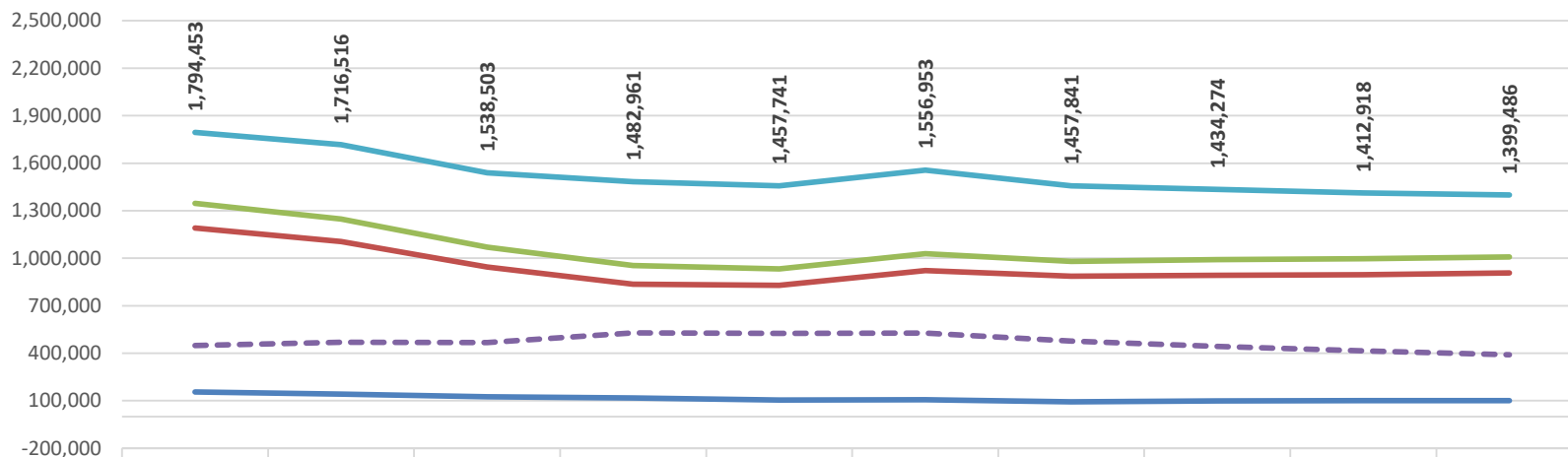
	Janar	Shkurt	Mars	Prill	Maj	Qershor	Korrik	Gusht	Shtator	Tetor	Nentor	Dhjetor
Niveli mesatar mujor viti 2025	272.65	273.19	268.38	277.55	281.14	280.48	276.40	270.09	270.06	264.93	268.86	281.18
Niveli mesatar mujor vitet 1991-2024	276.21	275.65	279.83	286.82	290.97	289.85	285.2	279.11	274.98	272.81	274.56	277.85
Minimumi mesatar mujor vitet 1991-2024	245.3	247.1	252.6	264.0	268.6	271.3	270.1	261.1	253.6	248.4	249.3	252.1
Maksimumi mesatar mujor vitet 1991-2024	293.2	294.1	294.8	296.9	296.9	296.3	294.3	291.5	289.4	288.4	289.2	291.7

Burimi: KESH sha; OST sha

HUMBJET NË RRJETIN E SHPËRNDARJES 2016-2025 (MWh)

	2016	2017	2018	2019	2020	2021	2022	2023	2024	2025
HUMBJE TEKNIKE NE TL (N/ST)	155,629	141,707	125,974	117,739	103,729	107,340	93,331	98,166	101,039	101,542
HUMBJE TEKNIKE NE ZONAT E OSSH	1,190,872	1,106,007	944,587	836,561	828,906	921,330	886,682	892,334	896,245	907,452
TOTALI I HUMBJEVE TEKNIKE OSSH	1,346,501	1,247,714	1,070,560	954,300	932,635	1,028,670	980,013	990,500	997,284	1,008,994
HUMBJE JOTOKNIKE OSSH	447,952	468,802	467,943	528,661	525,106	528,283	477,828	443,774	415,634	390,492
TOTALI I HUMBJEVE OSSH	1,794,453	1,716,516	1,538,503	1,482,961	1,457,741	1,556,953	1,457,841	1,434,274	1,412,918	1,399,486

Humbjet në rrjetin e Shpërndarjes 2016-2025 (MWh)



	2016	2017	2018	2019	2020	2021	2022	2023	2024	2025
HUMBJE TEKNIKE NE TL (N/ST)	155,629	141,707	125,974	117,739	103,729	107,340	93,331	98,166	101,039	101,542
HUMBJE TEKNIKE NE ZONAT E OSSH	1,190,872	1,106,007	944,587	836,561	828,906	921,330	886,682	892,334	896,245	907,452
TOTALI I HUMBJEVE TEKNIKE OSSH	1,346,501	1,247,714	1,070,560	954,300	932,635	1,028,670	980,013	990,500	997,284	1,008,994
HUMBJE JOTOKNIKE OSSH	447,952	468,802	467,943	528,661	525,106	528,283	477,828	443,774	415,634	390,492
TOTALI I HUMBJEVE OSSH	1,794,453	1,716,516	1,538,503	1,482,961	1,457,741	1,556,953	1,457,841	1,434,274	1,412,918	1,399,486

Burimi: OSSH sha / (OSHEE Group sha)

FATURIM-ARKETIMET DHE NDRYSHIMI I GJENDES DEBITORE GJTE VITIT 2016 (000/LEKE)										
Viti 2016	Te arketueshme	Faturuar 2016	arketimi per faturat e 2016		Arketimi per faturat e 2007-2015		Arketimi total	Te Arketueshme per energjine e faturuar ne vitin 2016	Ndryshimi I gjendjes se Llogarive te arketueshme gjate vitit 2016	Suarje Detyrimesh
	68.893.189	2	5		7		6=5+7	9=(2-5)		a+b
Janar	69.383.532	5.987.971	11.010		5.396.619		5.407.628	5.976.962		580.343
Shkurt	69.618.271	5.445.503	3.744.680		1.455.075		5.199.755	1.700.824		234.739
Mars	69.927.158	5.513.517	4.673.435		153.195		5.204.630	800.882		308.887
Prill	69.788.727	4.826.977	4.641.857		323.851		4.965.408	185.420		138.431
Maj	67.961.546	4.835.933	4.504.256		339.018		4.791.174	331.476		2.745.932
Qershor	67.501.589	4.525.728	4.203.847		245.816		4.449.971	321.851		458.791
Korrik	68.121.673	5.241.459	4.390.083		231.293		4.621.375	851.376		620.084
Gusht	68.364.412	5.309.834	4.799.896		267.109		5.067.095	509.848		242.739
Shtator	68.380.354	4.844.483	4.650.851		207.690		4.858.541	193.633		14.058
Tetor	68.499.705	4.834.628	4.480.377		204.901		4.685.278	354.252		149.351
Neutor	69.372.496	5.236.378	4.175.054		188.533		4.363.587	1.061.324		872.791
Dhjetor	70.720.061	6.410.681	4.854.705		208.411		5.063.116	1.555.976		1.347.565
Total		63.012.893	49.129.839		9.537.411		58.667.251	13.883.054		2.800.490

FATURIM-ARKETIMET DHE NDRYSHIMI I GJENDES DEBITORE GJTE VITIT 2017 (000/LEKE)										
Viti 2017	Te arketueshme	Faturuar 2017	arketimi per faturat e 2017		Arketimi per faturat e 2007-2016		Arketimi total	Te Arketueshme per energjine e faturuar ne vitin 2017	Ndryshimi I gjendjes se Llogarive te arketueshme gjate vitit 2017	Suarje Detyrimesh
	70.720.061	2	5		7		6=5+7	9=(2-5)		
Janar	71.449.571	6.192.711	2.680		5.460.521		5.465.201	6.190.031		729.510
Shkurt	71.348.179	5.323.527	3.823.686		4.601.313		5.424.919	1.499.921		101.392
Mars	70.863.992	5.141.318	4.363.971		4.661.524		5.625.505	177.347		484.187
Prill	70.863.942	4.857.464	4.525.615		331.899		4.857.514	331.849		50
Maj	70.398.535	4.667.810	4.599.520		533.697		5.133.217	68.290		465.407
Qershor	70.787.603	4.675.924	4.055.720		231.137		4.286.856	620.204		389.068
Korrik	71.320.608	5.435.009	4.599.634		302.110		4.901.744	833.375		533.265
Gusht	71.661.546	4.963.933	4.096.203		299.453		4.395.656	639.736		340.670
Shtator	71.152.086	4.824.463	5.046.889		286.834		5.333.323	222.026		808.860
Tetor	71.047.597	4.902.445	4.759.610		247.923		5.007.534	143.834		105.089
Neutor	72.031.524	5.527.306	4.313.657		229.732		4.543.379	1.213.649		983.927
Dhjetor	72.848.682	6.347.229	5.153.618		376.452		5.530.070	1,193.611		817.158
Total										

FATURIM-ARKETIMET DHE NDRYSHIMI I GJENDES DEBITORE GJTE VITIT 2018 (000/LEKE)										
Viti 2018	Te arketueshme	Faturuar 2018	arketimi per faturat e 2018		Arketimi per faturat e 2007-2017		Arketimi total	Te Arketueshme per energjine e faturuar ne vitin 2018	Ndryshimi I gjendjes se Llogarive te arketueshme gjate vitit 2018	Suarje Detyrimesh
	72.848.682	2	5		7		6=5+7	9=(2-5)		
Janar	72.669.803	5.939.299	62.280		6.055.898		6.118.178	5.877.019		178.879
Shkurt	72.671.209	5.685.334	3.857.605		1.825.823		5.683.429	1.827.729		1.905
Mars	72.326.005	5.680.352	5.325.171		690.855		6.016.026	355.181		335.704
Prill	71.388.405	4.071.224	5.191.294		427.530		5.618.824	520.070		947.600
Maj	70.904.609	4.211.173	4.839.152		379.517		5.218.669	404.970		340.797
Qershor	71.142.033	4.976.161	4.395.221		343.516		4.738.737	580.940		237.425
Korrik	71.320.917	5.403.874	4.895.796		329.195		5.224.991	508.078		178.883
Gusht	71.608.055	5.805.751	5.141.751		376.861		5.518.612	660.000		287.139
Shtator	71.254.995	5.047.859	5.088.650		312.269		5.400.919	40.791		353.061
Tetor	70.741.012	4.975.893	5.162.026		327.849		4.889.875	183.133		512.982
Neutor	71.270.659	5.318.580	4.517.124		471.580		4.788.703	1,000.703		529.647
Dhjetor	71.896.707	6.625.209	5.579.121		420.120		5.999.241	1,046.168		626.048
Total										

FATURIM-ARKETIMET DHE NDRYSHIMI I GJENDES DEBITORE GJTE VITIT 2019 (000/LEKE)										
Viti 2019	Te arketueshme	Faturuar 2019	arketimi per faturat e 2019		Arketimi per faturat e 2007-2018		Arketimi total	Te Arketueshme per energjine e faturuar ne vitin 2019	Ndryshimi I gjendjes se Llogarive te arketueshme gjate vitit 2019	Suarje Detyrimesh
	71.896.707	2	5		7		6=5+7	9=(2-5)		
Janar	72.594.758	6.710.114	11.908		6.000.155		6.012.063	6.698.206		698.051
Shkurt	72.200.340	5.819.929	4.371.236		1.842.611		6.214.348	1.448.193		394.418
Mars	71.887.840	5.496.920	5.066.576		743.005		5.809.420	430.545		312.500
Prill	71.416.559	5.155.722	5.183.866		443.917		5.627.003	27.364		471.281
Maj	71.210.144	5.075.626	4.909.283		372.758		5.282.041	166.343		206.415
Qershor	71.763.430	5.321.553	4.444.984		306.283		4.751.267	859.569		553.286
Korrik	71.806.098	6.488.447	5.801.596		490.567		6.292.163	5.474.636		123.460
Gusht	72.343.096	6.100.924	5.315.417		328.709		5.644.126	785.507		456.798
Shtator	71.822.038	5.207.417	5.446.625		282.250		5.728.875	239.208		521.458
Tetor	71.361.843	4.992.973	5.051.814		401.354		5.394.327	58.841		464.195
Neutor	72.178.116	5.292.443	4.247.363		228.307		4.476.170	1,044.580		816.273
Dhjetor	72.573.675	6.251.767	5.881.118		338.090		6.219.208	1,373.649		395.559
Total										

FATURIM-ARKETIMET DHE NDRYSHIMI I GJENDES DEBITORE GJTE VITIT 2020 (000/LEKE)										
Viti 2020	Te arketueshme	Faturuar 2020	arketimi per faturat e 2020		Arketimi per faturat e 2007-2019		Arketimi total	Te Arketueshme per energjine e faturuar ne vitin 2020	Ndryshimi I gjendjes se Llogarive te arketueshme gjate vitit 2020	Suarje Detyrimesh
	72.573.675	2	5		7		6=5+7	9=(2-5)		
Janar	73.370.006	6.508.770	16.409		5.696.013		5.712.421	6.492.362		796.349
Shkurt	73.517.039	6.106.516	4.125.767		1.743.716		5.959.484	1.890.749		147.033
Mars	73.116.688	5.129.481	4.299.341		430.490		4.729.831	830.140		399.550
Prill	73.467.701	5.029.219	5.202.266		275.941		5.478.206	173.047		448.988
Maj	73.242.253	4.885.187	4.886.458		262.176		5.148.635	28.729		233.447
Qershor	73.005.446	4.763.565	4.633.611		358.761		4.992.372	129.954		228.807
Korrik	73.865.820	5.588.061	4.444.094		282.993		4.727.087	1,143.367		860.374
Gusht	74.144.786	5.606.760	5.058.992		268.503		5.327.494	547.868		278.966
Shtator	74.000.009	5.327.453	5.096.023		298.625		5.394.648	223.647		142.977
Tetor	73.790.738	5.174.314	5.025.382		339.002		5.364.384	148.932		210.070
Neutor	74.671.974	5.615.129	4.483.130		250.764		4.733.894	1,132.000		881.235
Dhjetor	75.609.639	6.641.071	5.412.845		290.561		5.703.406	1,228.226		937.665
Total										

FATURIM-ARKETIMET DHE NDRYSHIMI I GJENDES DEBITORE GJTE VITIT 2021 (000/LEKE)										
Viti 2021	Te arketueshme	Faturuar 2021	arketimi per faturat e 2021		Arketimi per faturat e 2007-2020		Arketimi total	Te Arketueshme per energjine e faturuar ne vitin 2021	Ndryshimi I gjendjes se Llogarive te arketueshme gjate vitit 2021	Suarje Detyrimesh
	75.609.639	2	5		7		6=5+7	9=(2-5)		
Janar	76.272.477	6.400.370	19.639		5.717.893		5.737.532	6.380.731		662.838
Shkurt	76.826.391	6.245.453	3.770.254		1.931.284		5.691.538	2,475.198		553.914
Mars	76.698.803	6.158.373	5.690.524		688.438		6.378.961	467.849		220.588
Prill	76.818.750	5.817.548	5.202.616		301.785		5.604.601	514.732		212.947
Maj	76.122.770	5.190.807	5.588.338		328.680		5.886.818	367.201		695.980
Qershor	75.924.651	5.540.299	5.474.458		318.899		5.714.489	576.417		198.119
Korrik	76.242.743	6.377.974	5.053.270		324.612		5.377.882	1,324.705		1,000.093
Gusht	77.478.064	6.554.952	5.648.400		353.231		6.001.630	906.552		553.231
Shtator	76.933.233	5.401.032	5.687.762		258.102		5.945.864	286.730		544.832
Tetor	76.284.525	5.544.032	5.739.826		452.913		6.192.739	195.794		648.707
Neutor	76.704.823	5.794.416	5.080.754		293.364		5.374.118	713.662		420.298
Dhjetor	78.394.397	7.572.744	5.883.186		299.984		6.183.170	1,989.557		1,689.574
Total										

FATURIM-ARKETIMET DHE NDRYSHIMI I GJENDES DEBITORE GJTE VITIT 2022 (000/LEKE)										
Viti 2022	Te arketueshme	Faturuar 2022	arketimi per faturat e 2022		Arketimi per faturat e 2007-2022		Arketimi total	Te Arketueshme per energjine e faturuar ne vitin 2022	Ndryshimi I gjendjes se Llogarive te arketueshme gjate vitit 2022	Suarje Detyrimesh
	78.394.397	2	5		7		6=5+7	9=(2-5)		
Janar	79.417.476	7.903.272	4.793.436		2.655.257		6.859.193	3,108.836		1,043.079
Shkurt	80.288.829	7.515.728	4.569.541		2,094.835		6.664.376	2,946.187		851.353
Mars	80.426.273	7.857.071	6,691.413		1,028.214		7,719.627	1,168.658		137.444
Prill	79.617.380	6,186.945	6,531.117		464.721		6,995.838	344.172		808.893
Maj	79.499.359	6,188.303	5,909.488		336.836		6,306.324	218.515		118.021
Qershor	79.997.520	6,552.744	5,610.349		445.254		6,055.583	493.395		498.162
Korrik	80.005.081	6,453.744	6,280.646		323.427		6,345.883	323.427		85.161
Gusht	79.713.653	6,358.491	7,103.150		469.370		7,572.519	255.341		214.028
Shtator	78.554.734	6,162.925	7,005.112		394.733		7,399.844	1,236.919		1,236.919
Tetor	77.962.798	5,848.663	6,104.850		335.749		6,440.598	256.187		591.935
Total										

Neutor	78,481,014	6,502,315	798,011	5,186,087	5,984,099	5,704,303	518,216	0
Dhjetor	79,249,438	7,458,986	6,200,688	489,874	6,690,562	1,258,298	768,423	0
Total		82,089,187			81,234,146			

FATURIM-ARKEËTIMET DHE NDRYSHIMI I GJENDJES DEBITORE GJTE VITIT 2023 (000/LEKE)

Viti 2023	Te arketueshme	Faturuar 2023	arketimi per faturat e 2023	Arketimi per faturat e 2007-2023	Arketimi total	Te Arketueshme per energjine e faturuar ne vitin 2022	Ndryshimi I gjendjes se Llogarive te arketueshme gjate vitit 2022	Snuarje Detyrimesh
	79,910,252	2	5	7	6=5+7	9=(2-5)		
Janar	80,265,490	7,236,860	17,571	6,864,050	6,881,621	7,219,288	355,238	0
Shkurt	80,928,747	7,477,014	4,674,206	2,139,553	6,813,758	2,803,809	663,256	0
Mars	80,025,024	6,588,875	6,660,884	831,603	7,491,687	7,149	902,812	0
Prill	80,223,225	6,321,511	5,257,211	367,010	6,124,221	564,300	197,290	0
Maj	79,402,801	5,993,172	6,505,113	308,483	6,813,596	511,941	820,424	0
Qershor	79,665,073	6,074,125	5,550,743	261,110	5,811,853	523,382	262,272	0
Korrik	81,207,082	7,326,635	5,416,995	267,632	5,684,626	1,909,640	1,642,009	0
Gusht	81,148,240	7,281,460	6,976,104	464,097	7,440,201	308,356	158,741	0
Shtator	80,122,629	6,339,551	6,941,811	423,453	7,365,263	602,259	1,025,711	0
Tetor	78,896,288	5,987,458	6,799,324	414,465	7,213,799	5,572,992	1,226,341	0
Neutor	79,489,986	6,806,859	5,995,279	217,882	6,213,161	6,588,977	593,698	0
Dhjetor	80,898,725	7,990,009	6,461,676	119,594	6,581,270	7,870,415	1,408,739	0
Total		81,423,530			80,435,057			

FATURIM-ARKEËTIMET DHE NDRYSHIMI I GJENDJES DEBITORE GJTE VITIT 2024 (000/LEKE)

Viti 2024	Te arketueshme	Faturuar 2024	arketimi per faturat e 2024	Arketimi per faturat e 2007-2024	Arketimi total	Te Arketueshme per energjine e faturuar ne vitin 2024	Ndryshimi I gjendjes se Llogarive te arketueshme gjate vitit 2022	Snuarje Detyrimesh
	80,898,725	2	5	7	6=5+7	9=(2-5)		
Janar	80,868,782	7,374,630	43,814	7,300,873	7,344,687	7,330,816	29,943	0
Shkurt	80,512,066	6,650,006	4,919,897	2,086,825	7,006,722	1,730,109	356,716	0
Mars	79,792,096	6,078,325	5,882,823	915,472	6,798,295	195,502	719,970	0
Prill	78,750,197	5,298,149	5,791,231	548,817	6,340,048	493,082	1,041,899	0
Maj	78,149,222	5,291,466	5,330,756	545,985	5,876,740	39,290	585,274	0
Qershor	78,955,726	5,903,682	4,859,817	253,061	5,112,878	1,043,865	790,804	0
Korrik	79,959,320	7,200,506	5,762,477	434,435	6,196,912	1,438,929	1,003,594	0
Gusht	80,757,168	7,524,914	6,460,912	266,154	6,727,066	1,064,002	797,848	0
Shtator	79,508,725	5,852,055	6,768,560	331,938	7,100,498	916,506	1,248,443	0
Tetor	78,494,008	5,427,015	6,215,717	226,015	6,441,732	5,201,000	1,014,717	0
Neutor	79,443,101	6,491,713	5,190,200	352,419	5,542,619	6,139,253	949,093	0
Dhjetor	80,374,096	7,870,277	6,674,929	264,352	6,939,281	7,605,925	930,995	0
Total		76,962,736			77,427,478			

FATURIM-ARKEËTIMET DHE NDRYSHIMI I GJENDJES DEBITORE GJTE VITIT 2025 (000/LEKE)

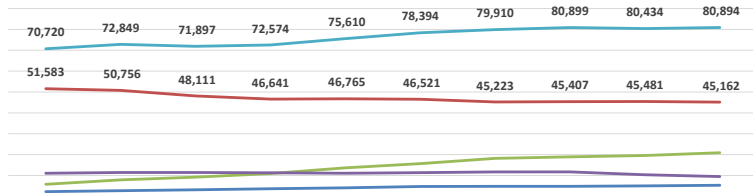
Viti 2025	Te arketueshme	Faturuar 2025	arketimi per faturat e 2025	Arketimi per faturat e 2007-2025	Arketimi total	Te Arketueshme per energjine e faturuar ne vitin 2025	Ndryshimi I gjendjes se Llogarive te arketueshme gjate vitit 2022	Snuarje Detyrimesh
	80,374,096	2	5	7	6=5+7	9=(2-5)		
Janar	80,216,107	7,613,214	37,177	7,418,048	7,455,225	7,576,037	157,989	0
Shkurt	80,471,404	6,856,520	5,080,295	2,031,522	7,111,817	1,776,225	255,297	0
Mars	80,806,862	6,220,273	5,748,897	806,834	6,555,731	471,376	335,458	0
Prill	81,479,612	5,608,594	5,883,563	397,781	6,281,344	271,969	672,750	0
Maj	82,092,226	5,199,892	5,458,287	354,228	5,812,516	258,396	612,624	0
Qershor	81,613,618	5,790,824	4,892,620	419,587	5,312,207	898,204	478,618	0
Korrik	80,781,278	6,720,277	5,085,609	282,767	5,368,376	1,114,607	831,840	0
Gusht	80,363,186	6,755,281	5,922,870	413,819	6,236,689	832,410	418,592	0
Shtator	81,611,470	5,608,144	6,599,167	307,261	6,856,428	941,023	1,248,284	0
Tetor	81,972,079	5,542,305	5,606,535	296,378	5,902,914	64,230	360,609	0
Neutor	81,222,085	6,124,923	5,052,198	322,731	5,374,929	1,072,724	749,994	0
Dhjetor	79,913,484	7,544,780	6,038,619	197,560	6,236,179	1,506,162	1,308,601	0
Total		75,585,026			75,124,414	75,585,026	75,585,026	0

Burimi: OSSH sh.a

	31.12.2016	31.12.2017	31.12.2018	31.12.2019	31.12.2020	31.12.2021	31.12.2022	31.12.2023	31.12.2024	31.12.2025
Buxhetore	2,264	2,741	3,157	3,681	4,104	4,761	4,787	4,835	5,057	5,322
Familjare	51,583	50,756	48,111	46,641	46,765	46,521	45,223	45,007	45,481	45,162
JoBuxhetore	5,776	7,904	9,183	10,947	13,641	15,720	18,188	18,967	19,548	20,914
Privat	11,098	11,447	11,446	11,304	11,100	11,393	11,712	11,690	10,348	9,497
Total	70,720	72,849	71,897	72,574	75,610	78,394	79,910	80,899	80,434	80,894

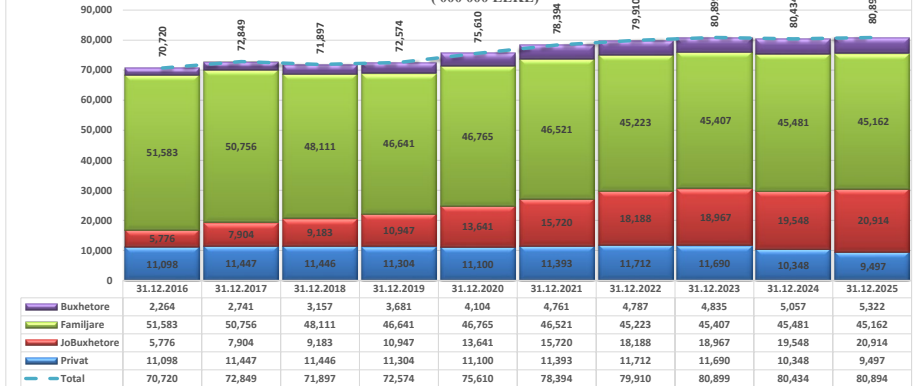
	31.12.2016	31.12.2017	31.12.2018	31.12.2019	31.12.2020	31.12.2021	31.12.2022	31.12.2023	31.12.2024	31.12.2025
Privat	11,098	11,447	11,446	11,304	11,100	11,393	11,712	11,690	10,348	9,497
JoBuxhetore	5,776	7,904	9,183	10,947	13,641	15,720	18,188	18,967	19,548	20,914
Familjare	51,583	50,756	48,111	46,641	46,765	46,521	45,223	45,007	45,481	45,162
Buxhetore	2,264	2,741	3,157	3,681	4,104	4,761	4,787	4,835	5,057	5,322
Total	70,720	72,849	71,897	72,574	75,610	78,394	79,910	80,899	80,434	80,894

ECURIA E GJËNDJES DEBITORE NDAJ OPERATORIT TË SHPËRNDARJES
31 DHJETOR 2016 - 31 DHJETOR 2025 SIPAS KLIENTËVE
(000 000 LEKË)



	31.12.2016	31.12.2017	31.12.2018	31.12.2019	31.12.2020	31.12.2021	31.12.2022	31.12.2023	31.12.2024	31.12.2025
Buxhetore	2,264	2,741	3,157	3,681	4,104	4,761	4,787	4,835	5,057	5,322
Familjare	51,583	50,756	48,111	46,641	46,765	46,521	45,223	45,407	45,481	45,162
JoBuxhetore	5,776	7,904	9,183	10,947	13,641	15,720	18,188	18,967	19,548	20,914
Privat	11,098	11,447	11,446	11,304	11,100	11,393	11,712	11,690	10,348	9,497
Total	70,720	72,849	71,897	72,574	75,610	78,394	79,910	80,899	80,434	80,894

ECURIA E GJËNDJES DEBITORE NDAJ OPERATORIT TË SHPËRNDARJES
31 DHJETOR 2016 - 31 DHJETOR 2025 SIPAS KLIENTËVE
(000 000 LEKË)



	31.12.2016	31.12.2017	31.12.2018	31.12.2019	31.12.2020	31.12.2021	31.12.2022	31.12.2023	31.12.2024	31.12.2025
Buxhetore	2,264	2,741	3,157	3,681	4,104	4,761	4,787	4,835	5,057	5,322
Familjare	51,583	50,756	48,111	46,641	46,765	46,521	45,223	45,407	45,481	45,162
JoBuxhetore	5,776	7,904	9,183	10,947	13,641	15,720	18,188	18,967	19,548	20,914
Privat	11,098	11,447	11,446	11,304	11,100	11,393	11,712	11,690	10,348	9,497
Total	70,720	72,849	71,897	72,574	75,610	78,394	79,910	80,899	80,434	80,894

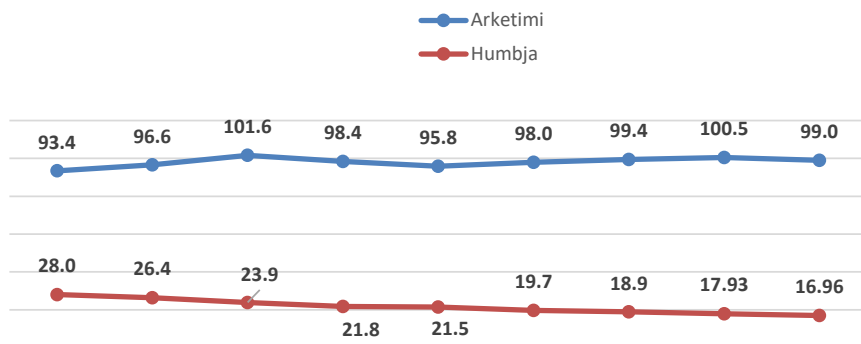
Niveli i humbjeve dhe arkëtimeve në Rrjetin e Shpërndarjes (2016-2025)

NIVELI I HUMBJEVE (%) 2016-2025												
	Janar	Shkurt	Mars	Prill	Maj	Qershor	Korrik	Gusht	Shtator	Tetor	Nentor	Dhjetor
2016	34.69	29.00	29.93	26.07	26.97	24.35	25.97	25.15	22.12	27.11	29.30	30.99
2017	33.50	27.63	28.66	25.81	25.88	28.31	24.69	23.29	19.79	23.76	23.55	27.90
2018	30.65	24.91	27.22	23.33	23.03	20.76	21.46	20.77	19.32	21.53	22.73	26.70
2019	29.25	23.21	26.5	21.36	22.10	19.92	20.42	19.81	17.54	20.40	21.58	24.76
2020	28.22	21.61	28.36	17.39	19.10	18.65	19.69	18.87	16.80	21.21	22.79	20.49
2021	27.87	20.1	25.92	21.08	17.92	18.34	18.75	17.93	16.22	18.56	19.88	20.25
2022	28.42	19.66	23.68	18.24	17.08	17.30	18.42	16.81	14.94	18.36	18.38	19.76
2023	25.79	19.06	21.05	18.65	16.68	16.04	17.48	16.17	14.80	17.62	18.20	21.52
2024	21.28	16.80	19.38	16.67	15.94	16.06	17.64	15.11	14.05	17.77	19.53	21.42
2025	18.53	16.88	20.01	15.69	15.37	14.32	16.34	14.41	12.64	17.49	17.97	20.70

Niveli i Arkëtimeve (%) 2016-2025												
	Janar	Shkurt	Mars	Prill	Maj	Qershor	Korrik	Gusht	Shtator	Tetor	Nentor	Dhjetor
2016	92.10	87.00	95.60	90.10	99.10	92.00	94.20	96.70	91.50	96.70	90.30	96.70
2017	85.20	87.60	105.70	94.50	105.70	91.80	104.80	97.40	94.60	103.80	92.70	100.10
2018	96.39	95.69	105.82	98.92	111.64	100.16	105.00	102.12	93.03	108.76	96.24	108.94
2019	90.7	92.6	99.8	102.4	102.50	94.00	104.40	99.30	93.90	104.70	89.60	110.70
2020	91.4	91.6	77.5	106.8	101.80	102.20	96.80	95.30	96.60	101.10	91.50	101.80
2021	86.4	88.9	102.1	91	101.20	110.70	96.90	94.10	90.70	114.70	96.90	101.50
2022	90.6	84.3	102.7	90.5	98.00	97.90	99.90	105.00	100.60	104.50	102.30	102.90
2023	92.3	94.2	100.2	92.9	113.7	95.70	93.60	101.60	101.20	113.80	103.80	96.70
2024	92	95	101.2	104.3	110.9	96.60	105.00	93.40	94.40	110.10	102.10	106.90
2025	94.7	93.4	95.6	101	103.6	102.20	101.70	94.30	101.50	105.30	97.00	101.80

	2016	2017	2018	2019	2020	2022	2023	2024	2025
Arkëtimi	93.4	96.6	101.6	98.4	95.8	98.0	99.4	100.5	99.0
Humbja	28.0	26.4	23.9	21.8	21.5	19.7	18.9	17.93	16.96

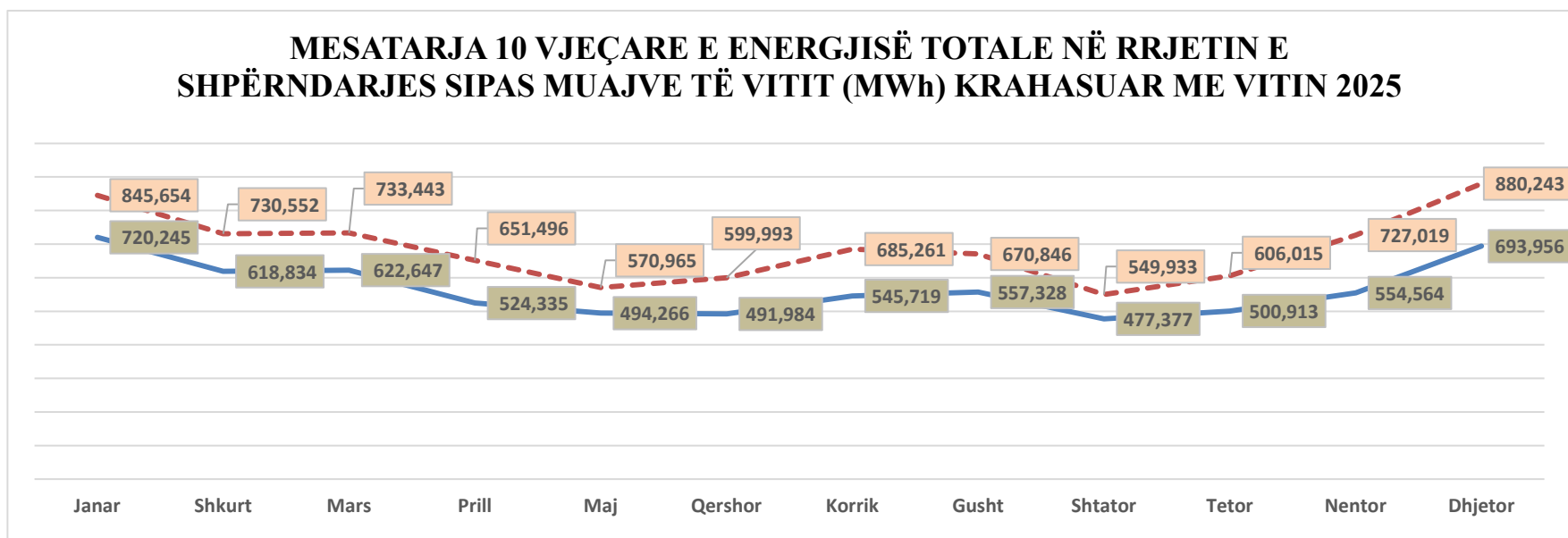
Arkëtimi dhe Humbjet në Sistemin e Shpërndarjes (%) 2016-2025



	Janar	Shkurt	Mars	Prill	Maj	Qershor	Korrik	Gusht	Shtator	Tetor	Nentor	Dhjetor	VITI
2016	671,884	559,772	573,419	469,803	477,468	463,248	509,916	514,034	451,153	480,236	540,024	688,760	6,399,717
2017	715,886	562,270	545,214	493,731	475,055	485,386	529,805	543,145	451,103	482,629	546,256	667,841	6,498,322
2018	659,778	590,823	597,595	468,417	467,468	468,885	508,892	539,134	465,468	471,407	517,882	681,162	6,436,911
2019	735,813	586,992	559,331	500,485	501,061	500,729	533,842	565,788	471,684	472,833	507,920	639,953	6,576,432
2020	708,611	607,803	589,581	489,236	464,183	463,789	527,801	533,336	482,358	506,280	562,127	669,977	6,605,082
2021	724,554	629,962	662,183	590,810	504,970	519,563	591,485	603,872	485,288	523,606	552,840	747,790	7,136,936
2022	774,084	656,456	698,991	556,264	504,224	525,509	591,875	587,527	481,886	480,961	536,263	650,564	7,044,604
2023	774,084	656,456	698,991	556,264	504,224	525,509	591,875	587,527	481,886	480,961	536,263	650,564	7,044,604
2024	833,309	680,841	691,925	582,304	551,158	564,242	683,298	678,150	539,707	533,630	660,362	882,102	7,881,013
2025	845,654	730,552	733,443	651,496	570,965	599,993	685,261	670,846	549,933	606,015	727,019	880,243	8,251,420

	Janar	Shkurt	Mars	Prill	Maj	Qershor	Korrik	Gusht	Shtator	Tetor	Nentor	Dhjetor
Mesatarja	720,245	618,834	622,647	524,335	494,266	491,984	545,719	557,328	477,377	500,913	554,564	693,956
2025	845,654	730,552	733,443	651,496	570,965	599,993	685,261	670,846	549,933	606,015	727,019	880,243

MESATARJA 10 VJEÇARE E ENERGJISË TOTALE NË RRJETIN E SHPËRNDARJES SIPAS MUAJVE TË VITIT (MWh) KRAHASUAR ME VITIN 2025



Burimi : OSHEE Group sha

Alokimi i Kapaciteteve në interkoneksion 2025

Ankandi	Periudha	Shqipëri - Mali Zi						Shqipëri - Greqi						Shqipëri - Kosovë					
		ATC e ofruar ne Ankand		ATC e shitur ne Ankand		Cmimi Ankandit		ATC e ofruar ne Ankand		ATC e shitur ne Ankand		Cmimi Ankandit		ATC e ofruar ne Ankand		ATC e shitur ne Ankand		Cmimi Ankandit	
		Export	Import	Export	Import	Export	Import	Export	Import	Export	Import	Export	Import	Export	Import	Export	Import	Export	Import
		[MW]	[MW]	[MW]	[MW]	[Euro/MWh]	[Euro/MWh]	[MW]	[MW]	[MW]	[MW]	[Euro/MWh]	[Euro/MWh]	[MW]	[MW]	[MW]	[MW]	[Euro/MWh]	[Euro/MWh]
Janar	01.01.2025-31.01.2025	258	50	258	50	1.5	5.21	0	0	0	0	0	0	150	150	150	150	1.53	0.29
Shkurt	01.02.2025-28.02.2025	0	0	0	0	0	0	250	50	250	50	1.7	6	150	150	150	150	1.8	0.22
Mars	01.03.2025-31.03.2025	50	50	50	50	2.16	1.89	260	100	260	100	1.1	5.86	150	150	150	150	0.41	0.33
Prill	01.04.2025-30.04.2025	0	14	0	14	0	3.55	250	0	250	0	1.12	0	150	150	150	150	0.17	0.69
Maj	01.05.2025-31.05.2025	0	0	0	0	0	0	250	0	250	0	2	0	150	150	150	149	0.32	0.51
Qershor	01.06.2025-30.06.2025	0	10	0	10	0	0.77	210	0	210	0	1.1	0	150	150	149	150	0.27	0.27
Korrik	01.07.2025-31.07.2025	0	0	0	0	0	0	265	0	265	0	0.68	0	150	150	150	150	0.26	0.58
Gusht	01.08.2025-31.08.2025	0	0	0	0	0	0	265	0	265	0	0.17	0	150	150	150	150	0.04	0.88
Shtator	01.09.2025-30.09.2025	0	0	0	0	0	0	250	0	250	0	0.18	0	150	150	148	150	0.08	1.16
Tetor	01.10.2025-31.10.2025	0	0	0	0	0	0	100	0	100	0	0.68	0	150	150	150	150	0.33	1.42
Nentor	01.11.2025-30.11.2025	0	0	0	0	0	0	250	0	250	0	0.36	0	150	150	150	150	0.8	1.55
Dhjetor	01.12.2025-31.12.2025	0	0	0	0	0	0	250	0	250	0	0.6	0	150	150	150	150	1.1	0.6

Burimi: OST sha

KLIENDET NE TL	KLIENËT NË TENSION TË LARTË PËR VITIN 2025													
	Energjia e faturuar ne [MWh]													
	Janar	Shkurt	Mars	Prill	Maj	Qershor	Korrik	Gusht	Shtator	Tetor	Nëntor	Dhjetor	2025	
EL220-L220KURUM/337	380	315	306	291	267	259	283	277	307	399	343	396	3,825	
F.ARRRES-T3/653	1,428	1,335	1,447	1,374	1,462	1,311	1,358	1,352	1,322	1,388	1,364	1,368	16,511	
Titan T1,T2	6,950	9,016	8,126	7,161	8,563	7,831	10,622	7,752	10,094	8,267	4,064	8,057	96,504	
FUSHE KRUJE 220kV-T2/058	3,593	2,053	12,290	10,357	11,976	10,854	8,548	10,145	11,397	11,148	7,530	9,765	109,656	
N/ST 220/6,3Colacent-T1/336	525	639	2,191	855	2,069	988	1,809	1,260	1,795	1,134	1,051	1,496	15,811	
N/ST i GSA EL 110kV-T1/694	5,677	837	8,701	8,878	9,302	9,066	128	165	149	3,175	9,059	9,458	64,595	
N/ST i GSA EL 110kV-T2/960	0	0	0	0	0	0	0	0	0	0	0	0	-	
N/ST I CWI Albania T1/148	567	553	601	547	534	560	594	436	575	613	479	446	6,505	
N/ST i AES EL 110kV-T1/690	0	2	0	0	0	0	0	22	6	0	0	0	30	
N/ST I AES EL 110kV-T2/692	180	162	149	147	7,182	5,503	7,462	7,306	7,204	7,238	152	172	42,857	
HEC Moglice T1,T2,T3	1	1	1	1	1	25	0	0	0	0	1	0	31	
HEC Peshqesh-T1/633	1	12	12	4	9	21	34	32	31	22	3	13	195	
Lajthiza T1/742	20	147	146	31	48	340	617	700	536	418	43	183	3,228	
Nova Solar Tr 1/322	52	44	44	38	37	36	37	42	44	47	54	676	1,150	
Erseka Solar Park 1 Tr 1/328	23	18	18	16	14	13	13	15	16	19	20	22	208	
Spv Blue 1 T1/139	30	26	26	22	20	18	18	21	25	30	33	34	302	
Spv Blue 2 T1/605								23	46	56	59	65	249	
Hec Gojan T1/338		0	3	0	0	6	16	8	8	3	0	0	45	
Hec Gostima 5 T1/342				1	0	0	2	5	2	0	0	0	10	
Hec Gostima 6 T1/340				1	0	0	6	8	3	0	0	0	19	
HEC Ashta1-T1,HEC Ashta2-T1,	0	0	0	0	0	1	10	10	1	1	0	0	23	
HEC Banje T1,T2	11	13	16	13	27	14	13	17	14	17	9	4	170	
HEC Fang-T1,T2.	6	15	31	27	28	37	45	54	44	36	4	24	352	
HEC Bishnica 1,2								0	0	0	0	0	0	
Sunny Side Solar								11	58	58	59	73	259	
Gjenerim KURUM	0	0	8	4	8	13	20	21	22	14	1	0	110	
FERRO KROM-F1,F2,F3,F4	76	67	62	6,164	7,296	6,811	6,852	7,105	6,985	7,201	67	64	48,751	
TOTAL	19,520	15,256	34,177	35,932	48,846	43,707	38,490	36,787	40,685	41,286	24,394	32,317	411,397	

Burimi:OST sha

Devijimet nga programi interkoneksionit 2025 (12-mujori)

<i>Minus = Hyrje</i>	<i>Plus = Dalje</i>												
<i>Data</i>	Janar	Shkurt	Mars	Prill	Maj	Qershor	Korrik	Gusht	Shtator	Tetor	Nëntor	Dhjetor	2025
1	114	-34	238	231	124	75	122	164	151	185	-196	387	1,561
2	-154	2	97	339	69	80	139	192	428	128	138	15	1,473
3	700	-55	45	101	-38	-158	284	130	64	-35	118	46	1,202
4	1261	99	444	16	71	-290	145	257	382	150	221	-78	2,678
5	1058	159	46	37	173	-70	187	89	44	-46	252	141	2,070
6	400	213	361	93	77	210	110	209	213	1345	305	232	3,768
7	653	19	317	211	-12	88	555	-5	482	197	66	245	2,816
8	939	33	39	-126	79	17	9	173	284	622	644	199	2,912
9	1163	-94	151	-226	-18	-206	437	1	489	745	703	225	3,370
10	811	197	268	-77	148	78	509	122	159	239	202	-127	2,529
11	503	109	72	-53	-39	205	373	19	302	640	445	-30	2,546
12	-762	62	306	49	52	263	103	63	682	981	369	173	2,341
13	-1711	270	626	-133	32	242	1014	-145	145	42	-182	8	208
14	-86	547	267	172	32	338	50	590	683	18	-38	18	2,591
15	188	162	664	225	-191	588	23	316	194	105	3	-185	2,092
16	161	78	1892	80	298	186	56	290	-9	98	436	-392	3,174
17	159	394	382	63	-192	109	110	225	278	-125	-563	258	1,098
18	312	11	437	89	10	203	94	116	405	495	-325	-18	1,829
19	203	-91	464	-184	131	57	-43	124	306	998	-192	-75	1,698
20	244	9	781	239	49	71	-28	332	262	362	280	-213	2,388
21	189	24	884	132	-86	26	-111	348	816	-345	-178	22	1,721
22	386	-20	-162	96	445	92	-133	99	57	302	122	351	1,635
23	414	94	174	-77	158	237	69	244	67	511	-31	-42	1,818
24	470	197	557	-30	31	74	-23	2044	72	1827	63	129	5,411
25	242	303	507	351	173	-212	37	113	120	93	329	-194	1,862
26	276	341	533	477	164	328	438	205	235	-303	143	84	2,921
27	449	147	78	325	45	-28	122	273	231	-295	-125	100	1,322
28	166	170	497	-28	6	69	244	102	-50	536	132	23	1,867
29	187	0	312	241	-70	333	142	109	37	67	376	127	1,861
30	440	0	581	-7	-98	92	-16	294	-67	162	214	80	1,675
31	108	0	318	0	-209	0	0	2779	0	-69	0	-62	2,865
Total	9,483	3,346	12,176	2,626	1,414	3,097	5,018	9,872	7461	9633	3733	1446	69,305

Burimi: OST sha

Transaksionet e energjisë elektrike të Pjesëmarrësve të Tregut në [MWh] për 2025

Nr.	Subjekti	Lloji transaksionit	Janar	Shkurt	Mars	Prill	Maj	Qershor	Korrik	Gusht	Shtator	Tetor	Nentor	Dhjetor	Total [MWh]				
1	DEVOLLJHP	Shkëmbime Cross-Border	AL-GR Greece - IN	-11,298	-14,053	-22,432	-7,560	-7,329	-9,099	-11,128	-14,881	-14,492	-4,918	-6,372	-4,370	-127,932			
			AL-KS Kosovo - IN	0	0	0	0	0	0	0	0	0	0	0	0	0	0		
			AL-ME Monte Negro - IN	-3,299	-2,477	-1,875	-1,426	-1,356	-1,920	-1,942	-1,631	-2,657	-1,631	-9,629	-5,143	-491	-43,806		
			Total IN	-14,597	-16,530	-24,307	-10,986	-12,685	-15,019	-13,870	-16,512	-17,149	-16,512	-14,547	-4,861	-4,861	-171,738		
			AL-GR Greece - OUT	20,625	18,378	15,931	25,203	21,555	15,727	5,831	4,599	6,184	3,419	26,303	55,353	219,108	11,056		
		AL-KS Kosovo - OUT	0	0	0	0	0	0	0	0	0	0	0	0	0	0			
		AL-ME Monte Negro - OUT	33,148	27,885	45,087	34,155	30,021	18,854	16,792	23,715	19,228	16,488	39,312	67,209	67,209	372,394			
		Total OUT	53,773	46,263	61,018	59,358	51,576	34,581	26,623	28,314	28,913	19,907	67,591	132,800	132,800	602,558			
		Total	39,176	29,733	36,665	49,709	39,012	19,833	9,362	11,685	8,939	5,531	63,956	132,077	132,077	445,819			
		Prodhimi	Total Prodhimi	39,176	30,847	36,665	49,709	39,012	19,833	9,362	11,685	8,939	5,531	63,956	132,077	132,077	445,819		
			Shitje AYEN Energy Trading				808										808		
		Transaksionet e brendshme	Shitje AL PEX	-17,85	-13,60	-164	-333	-197	-213	-255	-442	-58,6		-13	-40	-1,747			
			Shitje SPV BLUE 1	190,39	327,48	58	862	338	134	64	432	234,0	171	8,333	4,897	16,041			
		Total transaksione	173	314	-106	1,337	141	-79	-191	-163	175	171	8,320	4,857	14,949	14,949			
		2	AYEN Energy Trading	Shkëmbime Cross-Border	AL-GR Greece - IN	-12,303	-10,755	-4,245	-10,151	-3,806	-4,540	-1,747	-3,595	-5,615	-1,940	-392	-4,422	-63,491	
AL-KS Kosovo - IN	0				0	-7,639	0	0	-3,914	-12,190	-9,355	-8,286	-8,107			-49,493			
AL-ME Monte Negro - IN	-703				-768	-9,597	-2,402	-30	-390	-8	-493	-270	-3,517	-578	-727	-1,941	-49,493		
Total IN	-13,006				-11,503	-21,481	-12,553	-3,836	-8,844	-13,945	-13,443	-14,471	-13,564	-970	-5,149	-132,465			
AL-GR Greece - OUT	0				0	1,073	0	131	15	0	0	0	0	0	905	872	2,996		
AL-KS Kosovo - OUT	0			0	0	0	0	0	0	0	0	0	0	0	0	0			
AL-ME Monte Negro - OUT	4,252			3,430	4,238	4,683	5,527	4,174	3,833	4,038	3,943	6,587	5,168	3,803	5,676	53,676			
Total OUT	4,252			3,430	5,311	4,683	5,658	4,189	3,833	4,038	3,943	6,587	5,168	3,803	5,676	56,672			
Prodhimi	Total Prodhimi			39,176	30,847	36,665	49,709	39,012	19,833	9,362	11,685	8,939	5,531	63,956	132,077	132,077	445,819		
	Shitje AYEN Energy Trading						808										808		
Transaksionet e brendshme	Shitje AL PEX			-17,85	-13,60	-164	-333	-197	-213	-255	-442	-58,6		-13	-40	-1,747			
	Shitje SPV BLUE 1			190,39	327,48	58	862	338	134	64	432	234,0	171	8,333	4,897	16,041			
Total transaksione	173			314	-106	1,337	141	-79	-191	-163	175	171	8,320	4,857	14,949	14,949			
3	AYEN AS Energji			Shkëmbime Cross-Border	AL-GR Greece - IN	0	0	0	0	0	0	0	0	0	0	0	0		
					AL-KS Kosovo - IN	0	0	0	0	0	0	0	0	0	0	0	0	0	
		AL-ME Monte Negro - IN	-397		-178	0	-74	0	0	0	0	0	0	0	0	0	-649		
		Total IN	-397		-178	0	-74	0	0	0	0	0	0	0	0	0	-649		
		AL-GR Greece - OUT	0		0	0	0	0	0	0	0	0	0	0	0	0	0		
		AL-KS Kosovo - OUT	0	0	0	0	0	0	0	0	0	0	0	0	0	0			
		AL-ME Monte Negro - OUT	0	0	0	0	0	0	0	0	0	0	0	0	0	0			
		Total OUT	0	0	0	0	0	0	0	0	0	0	0	0	0	0			
		Prodhimi	Total Prodhimi	39,176	30,847	36,665	49,709	39,012	19,833	9,362	11,685	8,939	5,531	63,956	132,077	132,077	445,819		
			Shitje AYEN Energy Trading				808										808		
		Transaksionet e brendshme	Shitje AYEN Energy Trading	13,7													14		
			Shitje SOLE24	-86,00	-12	-15	-15	-15	-15	-15	-15	-15	-15	-15	-15	-15	-113,0		
		Total transaksione	57,051,88	34,156,08	22,245	16,578	18,049	9,354	7,050	5,313	8,161	25,333	56,857	43,949	304,095,6	304,095,6			
		4	ENERGJI ASHTA	Shkëmbime Cross-Border	AL-GR Greece - IN	0	0	0	0	0	0	0	0	0	0	0	0		
					AL-KS Kosovo - IN	0	0	0	0	0	0	0	0	0	0	0	0	0	
AL-ME Monte Negro - IN	0				0	0	0	0	0	0	0	0	0	0	0	0	0		
Total IN	0				0	0	0	0	0	0	0	0	0	0	0	0	0		
AL-GR Greece - OUT	0				0	0	0	0	0	0	0	0	0	0	0	0	0		
AL-KS Kosovo - OUT	0			0	0	0	0	0	0	0	0	0	0	0	0	0			
AL-ME Monte Negro - OUT	0			0	0	0	0	0	0	0	0	0	0	0	0	0			
Total OUT	0			0	0	0	0	0	0	0	0	0	0	0	0	0			
Prodhimi	Total Prodhimi			39,176	30,847	36,665	49,709	39,012	19,833	9,362	11,685	8,939	5,531	63,956	132,077	132,077	445,819		
	Shitje AYEN Energy Trading						808										808		
Transaksionet e brendshme	Shitje P.T.L			21,636	23,100	20,180	16,730	13,955	9,296	9,015	10,151	9,840	15,844	32,007	32,007	32,007	213,761		
	Total transaksione			21,636	23,100	20,180	16,730	13,955	9,296	9,015	10,151	9,840	15,844	32,007	32,007	32,007	213,761		
5	GEN-1			Shkëmbime Cross-Border	AL-GR Greece - IN	-30,967	-22,056	-33,876	-17,438	-16,440	-25,131	-20,765	-26,433	-25,325	-9,461	-20,991	-28,600	-276,583	
					AL-KS Kosovo - IN	-11,998	-61	-1,387	-28	-490	-5,598	-8,471	-22,844	-16,213	-15,814	-4,283			-76,485
					AL-ME Monte Negro - IN	-14,510	-7,197	-12,872	-8,306	-6,514	-13,811	-8,411	-7,311	-7,982	-14,452	-7,903	-13,136	-13,136	-121,933
		Total IN	-46,575		-29,314	-48,153	-25,776	-23,644	-43,543	-37,650	-56,590	-49,500	-39,727	-32,277	-41,736	-47,441	-474,461		
		AL-GR Greece - OUT	7,431		6,620	8,183	8,143	9,980	4,797	589	590	6,040	2,102	3,325	2,802	10,310	60,602		
		AL-KS Kosovo - OUT	1,356	4,625	7,228	10,181	9,200	172	163	203	1,915	5,133	13,095	10,310	55,101	110,100			
		AL-ME Monte Negro - OUT	6,411	12,995	12,130	7,712	13,904	3,986	3,682	4,669	8,568	5,992	12,929	8,023	10,001	101,001			
		Total OUT	15,198	24,240	27,541	26,035	28,076	8,965	4,434	5,462	14,543	13,294	29,490	20,895	28,363	267,704			
		Prodhimi	Total Prodhimi	4,590	3,074	9,663	11,627	6,367	2,961	2,208	1,084	249	2,707	9,908	8,219	62,257			
			Shitje AYEN Energy Trading				808										808		
		Transaksionet e brendshme	Shitje AL PEX	-435	-122	-130	-102	-102	-451	-2,550,74	-2,426	-3,171	-6,346	-2,771,51	-5,55	-19,440			
			Shitje AL PEX	12,162	7,456	14,054	11,607	5,321	9,146,34	8,147,60	6,708,84	4,144	6,086	11,265,35	16,184	112,282			
		Transaksionet e brendshme	Shitje AYEN ENERGY TRADING																
			Shitje ERSEKA SOLAR PARK 1	45	-134	-80	-52	-12					-23	-62	-16,0	-10	-20		
		Transaksionet e brendshme	Shitje ENER TRADE	20													20		
Shitje KESH	24,000		1,440	17,675			28,924	28,850	48,000	40,920	32,035	10,080	13,440	245,364					
Transaksionet e brendshme	Shitje SPV BLUE 1	-149	-124	-1,236	-60	-10					-44	-87	-60,0	-78	-1,477				
	Shitje DEVOLLJHP														153				
Total transaksione	35,981	8,175	30,291	11,365	5,197	37,619	34,447	52,206	33,826	29,227	12,618	29,000	319,951						
6	GSA	Shkëmbime Cross-Border	AL-GR Greece - IN	-8,436	-10,121	-6,185	-1,433	-2,018	-3,807	-2,796	-3,684	-25	-80	-390	-7,588	-46,563			

Blerje energji elektrike sipas detyrimit për shërbim publik të vendosur me VKM 456/2022 & 449/2023							
Shoqëria	Periodha	Statusi	Sasia	Çmimi	Vlera	TVSH	Vlera me TVSH
			MWh	Euro/MWh	Euro	Euro	Euro
Janar	01-31.01.2025	Blerje	122,400.00	150.68	18,442,678.32	3,688,535.66	22,131,213.98
Shkurt	01-28.02.2025	Blerje	87,600.00	157.74	13,818,460.56	2,763,692.11	16,582,152.67
Mars	01-31.03.2025	Blerje	98,016.00	118.18	11,583,818.30	2,316,763.66	13,900,581.96
Prill	01-30.04.2025	Blerje	-	-	-	-	-
Maj	01-31.05.2025	Blerje	-	-	-	-	-
Qershor	01-30.06.2025	Blerje	217,351.00	110.66	24,051,528.76	4,810,305.75	28,861,834.51
Korrik	01-31.07.2025	Blerje	346,207.00	131.24	45,437,296.16	9,087,459.23	54,524,755.39
Gusht	01-31.08.2025	Blerje	363,761.00	122.30	44,488,017.87	8,897,603.57	53,385,621.44
Shtator	01-30.09.2025	Blerje	251,103.00	115.49	28,999,612.20	5,799,922.44	34,799,534.64
Tetor	01-31.10.2025	Blerje	191,120.00	125.73	24,029,103.25	4,805,820.65	28,834,923.90
Nentor	01-30.11.2025	Blerje	68,387.00	121.57	8,314,117.80	1,662,823.56	9,976,941.36
Dhjetor	01-31.12.2025	Blerje	67,200.00	114.59	7,700,290.80	1,540,058.16	9,240,348.96
TOTALE			1,813,145.00	127.55	226,864,924.02	45,372,984.80	272,237,908.82

Blerje						
Prill 2025	Shoqëritë	Sasia (MWh)	EUR/MWh	Vlera	TVSH	Vlera me TVSH
		Në muajin Prill 2025, Kesh sh.a. nuk ka realizuar transaksione energjitike në bazë të VKM 456, dt 29.06.2022, i ndryshuar.				
Totali		-	-	-	-	-

Blerje						
Maj 2025	Shoqëritë	Sasia (MWh)	EUR/MWh	Vlera	TVSH	Vlera me TVSH
		Në muajin Maj 2025, Kesh sh.a. nuk ka realizuar transaksione energjitike në bazë të VKM 456, dt 29.06.2022, i ndryshuar.				
Totali		-	-	-	-	-

Shitje në kushtet e prurjeve							
Shoqëria	Periodha	Statusi	Sasia	Çmimi	Vlera	TVSH	Vlera TVSH
			MWh	Euro/MWh	Euro	Euro	Euro
Janar	01-31.01.2025	Shitje					
Shkurt	01-28.02.2025	Shitje					
Mars	01-31.03.2025	Shitje					
Prill	01-30.04.2025	Shitje					
Maj	01-31.05.2025	Shitje					
Qershor	01-30.06.2025	Shitje					
Korrik	01-31.07.2025	Shitje					
Gusht	01-31.08.2025	Shitje					
Shtator	01-30.09.2025	Shitje					
Tetor	01-31.10.2025	Shitje	11,008.00	94.62	1,041,535.20	208,307.04	1,249,842.24
Nentor	01-30.11.2025	Shitje	45,691.00	99.19	4,532,065.77	906,413.15	5,438,478.92
Dhjetor	01-31.12.2025	Shitje					
TOTALE			56,699.00	98.30	5,573,600.97	1,114,720.19	6,688,321.16

Burimi : KESH sh.a

Të dhënat e Tregimit dhe Klerimit për Tregun e Ditës në Avancë

Të dhënat e Tregut të Ditës në Avancë				
Progressive 2025	Minimum	Maksimum	Mesatare	Total
Volumi në MWh	1,461.06	6,955.08	2,786.64	1,014,336.34
Cmimi ditore mesatare Klerues (€/MWh)	€ 44.78	€ 262.10	€ 118.23	-
Cmimi per MTU (€/MWh)	€ 0.10	€ 600.00	€ 118.23	-

Faturimet (blerje-shitje)				
Periudha	Min Ditor	Max Ditor	Mesatare Ditore	Total
VITI 2024	€ 106,672	€ 1,827,427	€ 469,831	€ 171,958,215
Janar 2025	€ 422,253	€ 967,069	€ 575,455	€ 17,839,114
Shkurt 2025	€ 428,084	€ 966,210	€ 630,458	€ 17,652,822
Mars 2025	€ 160,377	€ 615,168	€ 372,854	€ 11,558,460
Prill 2025	€ 193,353	€ 643,208	€ 384,232	€ 11,526,963
Maj 2025	€ 158,020	€ 575,663	€ 364,952	€ 11,313,533
Qershor 2025	€ 246,534	€ 810,541	€ 556,520	€ 16,695,617
Korrik 2025	€ 472,990	€ 1,353,050	€ 820,150	€ 25,424,668
Gusht 2025	€ 405,907	€ 1,215,697	€ 786,238	€ 24,373,399
Shtator 2025	€ 296,305	€ 867,988	€ 580,208	€ 17,406,241
Tetor 2025	€ 270,763	€ 1,518,103	€ 749,171	€ 23,224,317
Nëntor 2025	€ 483,472	€ 1,286,138	€ 790,691	€ 23,720,715
Dhjetor 2025	€ 197,899	€ 689,801	€ 389,940	€ 12,088,164
Akumulative 2025	€ 158,020	€ 1,518,104	€ 614,850	€ 224,420,327

Volumet e treguar në MWh				
Periudha	Min Ditor	Max Ditor	Mesatare Ditore	Total
VITI 2024	705	3,341	2,206	807,282
Janar 2025	1,586.29	2,314.40	1,948.02	60,388.65
Shkurt 2025	1,473.27	3,085.73	1,956.57	54,783.98
Mars 2025	1,461.06	2,148.71	1,867.44	58,142.34
Prill 2025	1,695.12	2,883.42	2,351.65	70,549.38
Maj 2025	1,946.00	2,992.67	2,323.78	72,037.17
Qershor 2025	2,264.42	3,347.65	2,704.66	81,139.82
Korrik 2025	2,512.65	4,025.89	3,332.72	103,314.35
Gusht 2025	2,635.48	4,416.51	3,565.13	110,519.00
Shtator 2025	2,304.21	3,691.99	2,957.44	88,723.19
Tetor 2025	1,887.57	5,949.44	3,276.79	101,580.59
Nëntor 2025	2,510.27	6,955.08	3,971.76	119,152.69
Dhjetor 2025	2,119.92	3,969.08	3,206.00	99,385.98
Akumulative 2025	1,461.06	6,955.08	2,788.39	1,017,762.81

Bashkimi i tregjeve të Ditës në Avancë Shqipëri-Kosovë

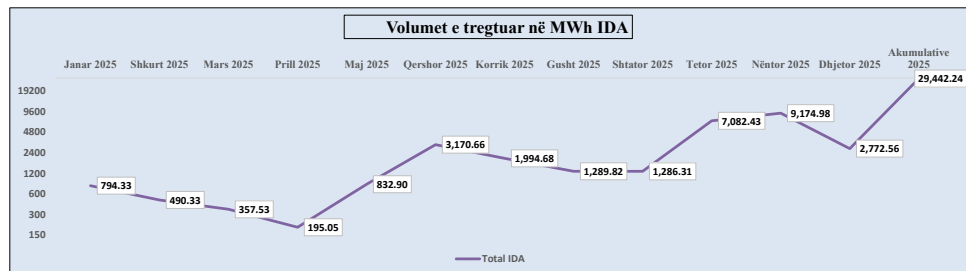
Të dhënat e Tregut të Ditës në Avancë Shqipëri-Kosovë pa përfshirë transakcionet ndërkufitare				
Progressive 2025	Minimum	Maksimum	Mesatare	Total Neto
Volumi në MWh	1,834.98	9,422.84	4,496.69	1,641,291.79
Cmimi mesatar ditore Klerues (€/MWh)	€ 44.78	€ 262.10	€ 118.24	-
Cmimi per MTU (€/MWh)	€ 0.10	€ 600.00	€ 118.24	-

Bashkimi i Tregjeve të Ditës në Avancë Shqipëri-Kosovë-Volume në (MWh)						
Periudha	Urdhërporsi Blerje	Urdhërporsi Shitje	Totali i Tregtimeve	Tregtime (pa transakcionet ndërkufitare)	Eksport nga Shqipëria	Import në Shqipëri
Janar 2024	91,297.00	100,120.00	74,102.00	74,102.00	N/A	N/A
Janar 2025	179,152.71	152,848.13	115,264.30	100,820.97	10,908.46	3,534.87
Shkurt 2024	103,049.80	162,506.70	109,869.90	88,040.40	1,439.00	20,391.50
Shkurt 2025	169,930.36	131,591.14	97,884.56	82,734.45	13,965.42	1,184.69
Mars 2024	148,041.63	185,913.70	151,628.22	128,633.95	1,753.37	21,240.90
Mars 2025	173,269.89	166,366.16	108,600.66	96,006.39	5,496.03	7,098.24
Prill 2024	132,132.24	214,381.30	157,805.45	123,992.37	1,011.91	32,801.17
Prill 2025	193,930.19	203,625.50	141,295.54	127,831.47	8,787.88	4,676.19
Maj 2024	155,215.66	214,589.82	176,715.94	133,906.13	983.82	41,825.99
Maj 2025	175,247.22	193,072.32	139,599.25	124,512.43	6,560.81	8,526.01
Qershor 2024	128,989.99	161,677.10	145,539.65	103,298.59	381.21	41,859.80
Qershor 2025	191,012.72	203,889.78	170,944.19	135,590.77	22,697.84	12,655.58
Korrik 2024	128,003.95	139,088.91	106,612.31	84,919.85	4,351.68	17,340.78
Korrik 2025	274,660.49	235,007.76	212,283.71	172,675.47	18,822.39	20,785.85
Gusht 2024	123,871.60	134,100.51	101,754.26	77,544.23	4,569.95	19,640.08
Gusht 2025	299,995.41	270,774.89	216,602.20	175,121.52	11,467.25	30,013.43
Shtator 2024	107,503.93	124,551.29	93,935.58	78,484.27	4,496.17	10,975.39
Shtator 2025	230,069.69	232,572.13	161,325.31	127,516.20	10,696.18	23,112.93
Tetor 2024	115,737.69	134,606.64	101,049.79	86,571.31	1,742.54	12,735.95
Tetor 2025	312,119.00	275,360.84	199,411.62	159,513.02	20,100.46	19,798.14
Nëntor 2024	148,108.33	145,395.35	111,033.42	94,385.09	2,688.34	13,960.00
Nëntor 2025	278,902.47	346,828.84	219,593.73	170,332.80	42,624.90	6,636.00
Dhjetor 2024	153,101.24	152,069.13	111,427.07	98,702.39	4,398.95	8,325.73
Dhjetor 2025	332,800.33	307,993.35	209,639.69	168,636.37	37,651.40	3,351.99
Progressive Viti 2024	1,534,425.97	1,868,626.34	1,441,493.59	1,172,580.58	27,816.94	241,097.29
Progressive Viti 2025	2,811,090.48	2,719,930.84	1,992,444.76	1,641,291.86	209,779.02	141,373.92
Ndryshimi (%)	83.20%	45.56%	38.22%	39.97%	65.14%	-41.36%

Të dhënat e Tregimit dhe Klerimit për Tregun e Ankaeve brenda së Njëjtës Ditë (IDA) si bashkim Tregjesh Shqipëri-Kosovë

Volumet e treguar në MWh-IDA				
Periudha	CRIDA-1	CRIDA-2	CRIDA-3	Total IDA
Janar 2025	793.33	0	1	794.33
Shkurt 2025	62.76	78.57	349	490.33
Mars 2025	113.53	238	6	357.53
Prill 2025	0	195.05	0	195.05
Maj 2025	670.63	162	0.27	832.9
Qershor 2025	2,188.26	2.3	980.1	3,170.66
Korrik 2025	1,805.65	188	1.03	1,994.68
Gusht 2025	933.9	336.32	19.6	1,289.82
Shtator 2025	1,105.37	174.04	5.4	1,286.31
Tetor 2025	5,387.79	1,473.34	221.3	7,082.43
Nëntor 2025	6,063.96	2,631.92	479.1	9,174.98

Dhjetor 2025	1,606.29	732.5	433.77	2,772.56
Akumulative 2025	20,731.47	6,212.04	2,498.73	29,442.24



Çmimet mesatare mujore për Tregun e Ankandeve brenda së Njëjtës Ditë (IDA) si bashkim Tregjesh Shqipëri-Kosovë 2025 (€/MWh)			
Periudha	CRIDA-1	CRIDA-2	CRIDA-3
Janar 2025	180.06 €	0 €	97.63 €
Shkurt 2025	215.05 €	204.54 €	1 €
Mars 2025	167.74 €	316.36 €	62.53 €
Prill 2025	0 €	42.14 €	0 €
Maj 2025	125.66 €	82.37 €	0 €
Qershor 2025	126.03 €	142.27 €	0 €
Korrik 2025	145.66 €	0.00 €	294.06 €
Gusht 2025	141.35 €	161.07 €	175.15 €
Shtator 2025	166.63 €	168.80 €	207.30 €
Tetor 2025	151.13 €	197.72 €	157.63 €
Nëntor 2025	104.92 €	126.14 €	206.56 €
Dhjetor 2025	165.85 €	154.03 €	147.22 €
Mesatare Vjetore 2025	140.84 €	133 €	112.4 €

Burimi: ALPEX sh.a