

**BILANCI ENERJITIK 10- MUJORIT TË PARË 2024 (MWh)**

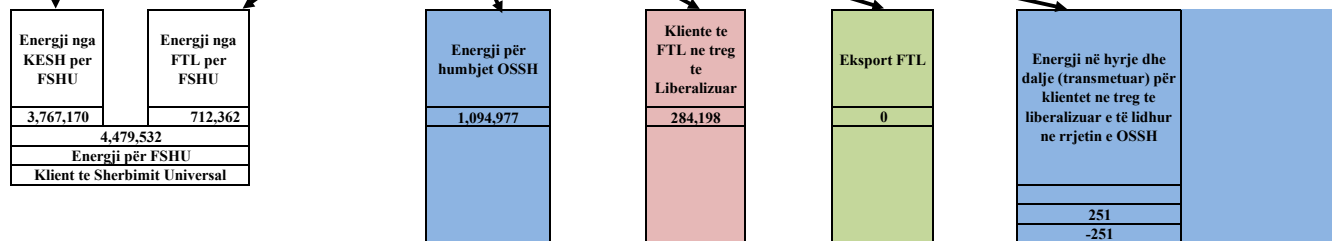
<b>Prodhimi neto publik</b>	
<b>Prodhimi Neto KESH sha</b>	
3,599,348	
Blerje KESH ne treg te liberalizuar	
<b>Prodhim+Blerje</b>	3,599,348
<i>Shkembime (hyrje) KEK</i>	
<i>Shkembime (dalje) KEK</i>	-167,822
<i>Energji shtesë ndihmese+disbal</i>	
<b>Energji per FSHU nga KESH sha</b>	<b>3,767,170</b>

Prodhuar nga PPE në rrjetin e OSSH			Prodhuar nga PPE në rrjetin e OST		Prodhues te pavarur								
HEC Lanabregas	HEC,Priv/Kon ne Rrjetin e OSSH për FTL	Fotovoltaik (kont FTL)	HC,Priv/Kon ne Rrjetin e OST për FTL	HEC Ashta	HEC Banja	HEC Mogjica	HEC KURUM	HEC Peshqesh	HEC Fangu	HEC Qami	SPV Blue 1	Nova Solar	Fotovoltaik (ne treg te lire)
12,479	681,159	60,882	753,784	193,979	140,223	252,711	286,680	79,445	176,190	2,833	61,801	19,388	46,280

<b>Prodhim neto vendas</b>
6,367,182

Energji e siguruar nga FTL					
Blerje HEC Lanabregas	Blerje HC,Priv/Kon ne Rrjetin e OSSH për FTL	Blerje FOTOVO LTAIK	Blerje HC,Priv/Kon ne Rrjetin e OST për FTL	Blerje Neto Ashta	Blerje ne Treg të Liberalizuar nga FTL
12,479	681,159	60,882	753,784	193,979	389,505
					2,091,788

<b>Balanca në interkoneksion (dhenie)</b>
(247,832)



**KONSUMI I ENERJISE NE SHQIPERI**      6,615,014

**6,615,014**

*Burimi: OST sha; KESH sha; OSSH sha; FSHU sha; FTL sha; (OSHEE Group sha)*

TABELA ME TE DHËNËA PERIODIKE (MUJORE) TE OSHEE Group Sh.a 2024		Janar	Shkurt	Mars	Priill	Maj	Qershor	Korrik	Gusht	Shtator	Tetor	Progressive
<b>A</b>	<b>Energji Totale e Hyrë në OSHEE Sh.a (MWh)</b>	<b>759,550</b>	<b>644,990</b>	<b>618,777</b>	<b>515,155</b>	<b>499,220</b>	<b>551,723</b>	<b>675,592</b>	<b>670,974</b>	<b>525,449</b>	<b>516,268</b>	<b>5,977,699</b>
A.1	Energji e transportuar nëpërmjet OST për llogari të OSHEE Group Sh.a	614,882	522,439	478,599	392,831	394,245	410,005	499,549	650,024	489,218	469,944	5,202,447
A.1.1	Nga OST për: detyrë nëpërmjet OST	179,214	186,578	211,700	189,993	216,864	413,609	569,334	583,055	399,965	358,313	3,752,173
A.1.2	Nga OST si importi i OSHEE Sh.a (Energji e bitare në AIXPEX për FSHU)	32,081	32,690	33,208	48,113	37,754	28,772	29,596	26,439	29,123	31,528	389,505
A.1.3	Energji e transportuar për klientët JSAN (te cilët në tërësi të përbëjnë furnizuesit të tjerë)	480	310	6,383	8,742	13,263	14,234	17,108	16,779	14,238	13,184	159,796
A.1.4	Nga OST për llogari të klientëve të OSHEE Sh.a përditë nga HEC-ët në rrethinë të transportimit	182,836	110,021	147,807	146,784	179,643	21,449	33,522	24,718	46,892	66,084	939,973
A.1.5	Nga TFC VL/DKA nëpërmjet OST	n/a	n/a	n/a	n/a	n/a	n/a	n/a	n/a	n/a	n/a	n/a
A.1.6	Nga Biotrica L2 nëpërmjet OST	n/a	n/a	n/a	n/a	n/a	n/a	n/a	n/a	n/a	n/a	n/a
A.1.7	Ekspert OSHEE Group Sh.a	-	-	-	-	-	-	-	-	-	-	-
A.2	Energji elektrike e injektuar në OST nga Hec-ët Lokale	73,759	35,851	73,148	67,149	51,938	12,519	7,706	7,176	14,244	17,362	360,852
A.3	Energji e transportuar drejtë në rrethinë të OSHEE Group Sh.a	144,668	92,551	139,808	122,423	104,695	41,658	26,043	20,948	36,231	46,325	775,251
A.3.1	HEC Lloji meqenatë	2,114	1,860	1,799	1,838	1,999	538	511	348	402	778	12,497
A.3.2	Impunitet Privat/Me Koncesion	138,715	85,036	128,626	113,003	95,440	32,073	16,032	10,075	29,515	35,999	679,464
A.3.3	Burimet e rinovueshme fotovoltajk (BRE)	3,840	5,635	9,384	7,493	8,256	8,747	9,500	10,575	9,913	9,948	83,290
A.3.4	Prerubim i injektuar në OST nga BRE-ët në Treg të Përbashkët	993	1,324	1,666	1,974	2,513	2,609	2,586	2,558	4,792	25,614	
<b>B</b>	<b>Humbjet Totale në Rrjetin e Shpërndarjes (MWh)</b>	<b>833,390</b>	<b>680,841</b>	<b>691,935</b>	<b>582,304</b>	<b>551,158</b>	<b>564,242</b>	<b>683,289</b>	<b>678,150</b>	<b>539,693</b>	<b>533,630</b>	<b>6,338,550</b>
B.1	Humbje Teknike nëse e TL (MWh)	177,201	114,411	134,056	97,092	87,361	96,009	120,554	102,470	76,802	94,823	1,094,977
B.1.1	Humbje Teknike nëse e TL (MWh)	10,755	7,774	9,897	7,090	6,502	6,528	10,579	8,223	5,596	7,502	80,845
B.1.2	Humbje Teknike në Zona tërësi	132,233	78,712	85,639	62,759	54,536	56,539	79,954	72,168	53,824	52,320	723,173
B.1.3	Humbje Teknike në Zona tërësi	53,206	27,926	38,530	28,343	26,424	27,421	30,421	19,085	15,003	35,111	301,959
<b>C</b>	<b>Humbjet Totale në OSSH Sh.a (%)</b>	<b>21.88%</b>	<b>16.89%</b>	<b>19.37%</b>	<b>16.67%</b>	<b>15.94%</b>	<b>16.06%</b>	<b>17.44%</b>	<b>15.11%</b>	<b>16.05%</b>	<b>17.77%</b>	<b>17.27%</b>
C.1	Humbje Teknike nëse e TL (%)	1.29%	1.14%	1.43%	1.22%	1.18%	1.15%	1.23%	1.04%	1.04%	1.41%	1.28%
C.2	Humbje Teknike në Zona (%)	33.77%	11.70%	12.56%	10.74%	10.02%	10.33%	11.83%	11.52%	9.89%	9.93%	15.39%
C.3	Humbje Teknike në Zona (%)	6.46%	4.10%	5.57%	4.85%	4.87%	4.81%	5.29%	4.22%	4.22%	6.58%	4.76%
<b>D</b>	<b>Energji e përdorur në Rrjetin e Shpërndarjes</b>	<b>616,637</b>	<b>532,169</b>	<b>526,941</b>	<b>460,749</b>	<b>438,433</b>	<b>445,015</b>	<b>535,590</b>	<b>550,206</b>	<b>440,277</b>	<b>412,374</b>	<b>4,956,390</b>
D.1	Shitur Klienteve FFM (MWh)	51,042	47,867	49,262	41,162	46,508	48,656	61,000	54,226	48,286	48,216	496,825
D.1.1	Shitur Klienteve FFM Privat (MWh)	315	36	18	16	13	11	13	14	13	15	251
D.1.2	Shitur Klienteve FFM Jëmbështetje (MWh)	1,403	1,356	1,488	1,480	1,635	1,710	1,956	1,800	1,580	1,568	15,975
D.1.3	Shitur Klienteve FFM 20/10 (MWh)	49,224	46,485	47,756	39,666	44,860	46,945	59,132	52,113	46,692	46,736	480,699
D.2	Shitur Klienteve Private (MWh)	106,118	97,666	92,094	85,972	91,034	115,130	140,722	145,060	110,719	96,139	1,089,094
D.2.1	Shitur nga rrethi i Transmisimit për llogari të OSHEE Group Sh.a	695	690	553	403	412	298	482	489	463	452	4,924
D.2.2	Shitur për nevojë të veta të OSHEE Sh.a	105,423	96,976	91,541	85,569	90,622	114,832	139,940	144,571	109,256	95,687	1,084,170
D.3	Shitur Klienteve Jëmbështetje (MWh)	3,438	3,258	3,043	2,425	3,062	3,095	5,024	3,339	2,851	2,865	33,799
D.4	Shitur Klienteve Buxhetore (MWh)	17,017	15,936	14,282	10,560	10,352	10,879	13,453	11,361	10,817	12,474	127,081
D.5	Shitur Klienteve Familjare (MWh)	368,897	317,840	297,897	248,436	222,073	240,334	298,424	311,289	298,582	211,572	2,748,015
D.5.1	Shitur Klienteve Familjare (MWh)	55,015	49,413	47,930	39,596	34,665	39,123	47,523	30,478	229,831	212,989	2,660,353
D.5.2	Shitur Klienteve Familjare për Ambientet e Përbashkëta	8,812	8,427	8,307	8,130	8,308	8,611	10,881	10,311	9,109	8,583	87,680
D.6	Energji elektrike e injektuar në OST nga Hec-ët Lokale	73,759	35,851	73,148	67,149	51,938	12,519	7,706	7,176	14,244	17,362	360,852
D.7	Energji elektrike e përdorur nga klientët në treg të përbashkët	97	3,150	6,363	8,742	11,363	14,234	17,108	16,779	14,238	13,184	199,796
<b>E</b>	<b>Faturave mujë Parapardhës (000/Leke)</b>	<b>7,882,027</b>	<b>7,374,630</b>	<b>6,650,006</b>	<b>6,078,325</b>	<b>5,298,049</b>	<b>5,291,466</b>	<b>5,903,682</b>	<b>7,200,506</b>	<b>7,524,914</b>	<b>5,852,055</b>	<b>65,156,660</b>
E.1	Aktuar për faturat e tjerë të vitit aktual	48,314	4,919,997	4,613,577	4,072,304	3,966,748	3,933,016	5,971,324	6,796,470	6,213,617	5,982,199	69,389,393
E.1.1	Aktuar për faturat e tjerë të vitit aktual	7,300,873	2,086,825	915,472	548,817	545,985	253,061	434,435	266,154	311,938	226,015	12,909,574
E.1.2	Aktuar për faturat e tjerë të vitit aktual (%)	92.8%	95.8%	102.2%	104.3%	110.9%	96.6%	105.0%	97.4%	94.4%	102.1%	98.7%
E.1.3	Aktuar për faturat e tjerë të vitit aktual (%)	0.5%	66.7%	66.3%	66.2%	74.9%	62.0%	67.3%	66.5%	67.4%	60.7%	
E.1.4	Aktuar për faturat e tjerë të vitit aktual (%)	0.0%	0.0%	22.7%	29.1%	25.7%	29.8%	30.3%	23.3%	21.3%	28.8%	19.1%
E.1.5	Aktuar për faturat e tjerë të vitit aktual (%)	91.3%	28.3%	13.8%	5.0%	10.3%	4.8%	7.4%	3.7%	4.4%	3.9%	10.8%
<b>F</b>	<b>Faturave mujë Raportues (000/Leke)</b>	<b>7,374,630</b>	<b>6,650,006</b>	<b>6,078,325</b>	<b>5,298,049</b>	<b>5,291,466</b>	<b>5,903,682</b>	<b>7,200,506</b>	<b>7,524,914</b>	<b>5,852,055</b>	<b>5,427,015</b>	<b>63,606,647</b>
F.1	Nr. Konsumatorëve gjithësi (Nr.)	1,324,441	1,327,372	1,330,098	1,333,496	1,333,406	1,336,562	1,340,343	1,340,775	1,342,157	1,343,886	1,343,886
F.2	Fatura të emetuara me lexim konsumi (Nr.)	1,027,226	1,025,143	1,026,467	1,025,495	1,029,214	1,028,729	1,079,309	1,083,924	1,064,932	1,052,561	10,498,560
F.3	Sasia e energjisë së faturuar me lexim konsumi (MWh)	299,881	301,375	297,510	305,942	303,683	283,805	272,247	262,660	283,099	297,645	2,907,847
F.4	Fatura të emetuara me lexim "0" (Nr.)	-	-	-	-	-	-	-	-	-	-	-
F.5	Nr. faturave të emetuara pa lexim konsumi e pa mjet (Nr.)	-	-	-	-	-	-	-	-	-	-	-
F.6	Sasia e energjisë së faturuar si energji e pamatur (MWh)	-	-	-	-	-	-	-	-	-	-	-
F.7	Nr. faturave të emetuara pa lexim konsumi (Nr.)	301	32	32	32	31	25	27	33	20	24	410
F.8	Sasia e faturuar si dem ekonomik (MWh)	428	200	213	229	212	261	30	23	284	245	2,982
F.9	Nr. faturave për cilësi të këqija të arkutuar (Kamali Llogare) (Nr.)	274,407	232,021	260,289	275,842	267,071	267,076	476,854	460,656	393,389	384,921	3,823,089
F.10	Vlera e Kamali vonësive të arkutuar (000/Leke)	76,046	64,886	72,300	84,802	89,765	77,007	137,571	92,827	77,248	82,590	855,401

Burimi: OSSH shu; ESHU shu; FTL shu / OSHEE shu

Shënim:

<b>BILANCI OSSH, FSHU,FTL sha 2024 (10-mujori)</b>		
1	ENERGJI TOTALE E HYRE NE RRJETIN E OSSH-se	5,977,698
2	Energji e shitur nga KESH sha per FSHU sha	3,767,170
3	<b>ENERGJI NE HYRJE E BLERE NGA FTL (OSHEE sha)</b>	<b>2,091,805</b>
3.1	Blere nga Prodhimi i PPE në rrjetin e OSSH	754,536
3.2	Blere nga Prodhimi i PPE në rrjetin e OST	947,764
3.3	Blere ne Treg të Liberalizuar nga FTL sha	389,505
4	<b>ENERGJI NE DALJE NGA FTL (OSHEE sha)</b>	<b>2,091,788</b>
4.1	Energji nga FTL per FSHU	712,362
4.2	Energji nga FTL për humbjet OSSH	1,094,977
4.3	Energji e shitur nga FTL ne treg te liberalizuar	284,198
4.4	Ekspert i FTL	-
4.5	Energji vetem per tu transmetuar tek klientet ne treg te liberalizuar (ne rrjetin e OSSH)	251
7	<b>ENERGJI QE KALON NE RRJETIN E OSSH-se</b>	<b>6,338,550</b>
7.1	Energji totale e transmetuar nga OST ne rrjetin e Shpërndarjes	5,537,733
7.2	Energji e transmetuar direkt ne rrjetin e Shpërndarjes nga impiantet e lidhur ne rrjetin e Shpërndarjes	392,983
7.3	Energjia e ngitur ne rrjetin e transmetimit nga centralet e lidhura ne rrjetin e OSSH	360,852
8	<b>Humbje totale ne rrjetin e OSSH-se ( %)</b>	<b>17.27</b>

*Burimi: OSSH sha; FSHU sha; FTL sha / OSHEE sha*

	Janar	Shkurt	Mars	Prill	Maj	Qershor	Korrik	Gusht	Shtator	Tetor	2024		
<b>HYRE</b>	<b>Dhene nga H/C e KESH ne rrjetin e Transmetimit</b>	461,940	434,525	312,293	230,865	333,614	349,424	478,833	408,397	294,248	295,210	<b>3,599,349</b>	<b>8,093,686</b>
	<b>Dhene nga H/C e me perparesi ne rrjetin e Transmetimit (+Qami)</b>	153,707	86,486	130,461	134,220	114,053	36,385	12,122	7,921	31,403	49,859	<b>756,617</b>	
	<b>Energji nga Hec-et Lokale levruar ne Rrjetin e Transmetimit (me ngritje)</b>	73,759	35,851	73,148	67,149	51,938	12,519	7,706	7,176	14,244	17,362	<b>360,852</b>	
	<b>Gjenerim KURUM (prodhues i pavarur)</b>	47,623	36,678	34,155	40,512	31,148	22,427	22,044	19,100	15,949	17,043	<b>286,679</b>	
	<b>Gjenerim Spv Blue 1 (prodhuese i pavarur)</b>	-	-	-	-	3,343	10,657	15,709	13,543	10,072	8,476	<b>61,800</b>	
	<b>Gjenerim Nova Solar</b>	-	-	-	-	-	-	854	6,391	5,869	6,274	<b>19,388</b>	
	<b>HEC ASHTA (prodhues i pavarur Kontr.me OSHEE)</b>	29,506	23,646	19,871	15,359	18,186	15,061	20,207	17,545	16,319	18,281	<b>193,981</b>	
	<b>HEC BANJE (prodhues i pavarur)</b>	25,295	20,166	19,747	15,855	19,032	8,291	8,757	8,757	6,031	8,292	<b>140,223</b>	
	<b>HEC MOGLICE (prodhues i pavarur)</b>	55,232	39,392	42,314	25,222	28,288	18,209	8,068	7,894	16,987	11,106	<b>252,712</b>	
	<b>HEC PESHQESH-T1/637 (prodhues i pavarur)</b>	17,478	8,763	13,692	12,207	10,014	3,162	1,369	1,101	3,413	8,245	<b>79,444</b>	
	<b>HEC FANGU (prodhues i pavarur)</b>	45,494	23,264	15,108	25,046	24,409	19,663	6,020	5,451	2,084	9,651	<b>176,190</b>	
<b>Importi(Hyre) nga Linjat e Interkonjeksionit</b>	133,112	187,286	214,751	255,012	141,967	225,720	249,151	268,891	244,255	246,307	<b>2,166,452</b>		
<b>DALE</b>	<b>Humbjet ne Transmetim</b>	22,608	17,520	17,149	17,399	16,130	13,854	16,413	15,649	12,894	13,600	<b>163,216</b>	<b>8,093,686</b>
	<b>Transmetuar ne Rrjetin e Shperndarjes</b>	687,647	586,964	550,408	457,962	443,881	519,626	653,952	654,278	500,667	482,349	<b>5,537,734</b>	
	<b>Klientene treg te hapur (TL)</b>	36,554	31,249	50,416	58,814	63,498	62,492	65,727	32,717	29,929	42,721	<b>474,117</b>	
	<b>Eksporti (Dale) nga Linjat e Interkonjeksionit</b>	296,337	260,325	257,566	287,271	252,483	125,546	94,747	69,524	117,384	157,436	<b>1,918,619</b>	
<b>Humbjet ne Transmetim</b>	22,608	17,520	17,149	17,399	16,130	13,854	16,413	15,649	12,894	13,600	149,616		
<b>Humbjet ne Transmetim ne %</b>	2.17	1.96	1.96	2.12	2.89	1.95	1.98	2.03	1.95	1.95	2.02		

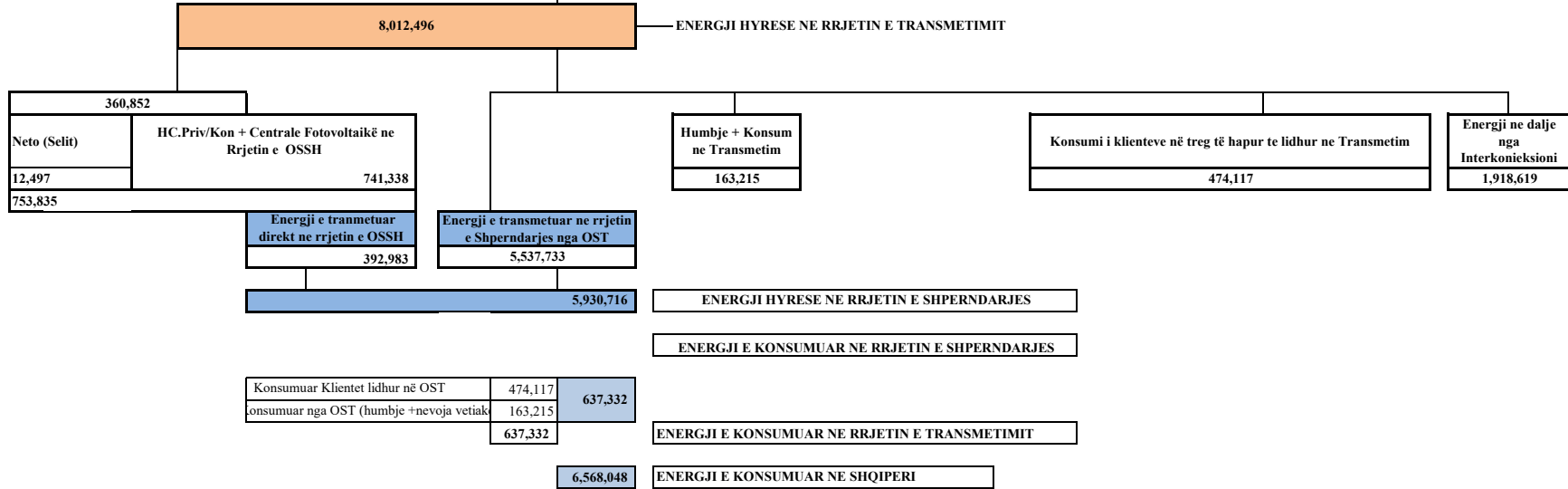
**Burimi: OST sha**

Bilanci i Energiisë Elektrike në vitin 2024

OST sha	Njësia e Matjes	Janar	Shkurt	Mars	Prill	Maj	Qershor	Korrik	Gusht	Shtator	Tetor	Shuma 2024 [MWh]
	MWh											
Prodhimi nga KESH GEN në Rrjetin e Transmetimit	1	461,940	434,525	312,293	230,865	333,613.58	349,424	478,833	408,397	294,248	295,210	3,599,348
Prodhimi nga HEC/HPP e vogla në Rrjetin e Transmetimit	2	73,759	35,851	73,148	67,149	51,938	12,518.7	7,706	7,176	14,244	17,362	360,852
Prodhimi nga PPE/IPP e mëdha në Rrjetin e Transmetimit	3	153,707	86,486	130,461	134,220	114,053	36,384.6	12,122	7,921	31,403	49,859	756,617
Prodhimi nga HEC Peshqesh	4	17,478	8,763	13,692	12,207	10,014	3,162	1,369	1,101	3,413	8,245	79,445
Prodhimi nga HEC Banja	5	25,295	20,166	19,747	15,855	19,032	8,291	8,757	8,757	6,031	8,292	140,223
Prodhimi nga HEC FANG	6	45,494	23,264	15,108	25,046	24,409	19,663	6,020	5,451	2,084	9,651	176,190
Prodhimi nga HEC Moglicë	7	55,232	39,392	42,313	25,222	28,288	18,209	8,068	7,894	16,987	11,106	252,711
Prodhimi nga HEC Ashta	8	29,506	23,646	19,871	15,359	18,185	15,060	20,207	17,545	16,319	18,281	193,979
Prodhimi nga Spv Blue 1 T1/139						3,343	10,657	15,709	13,543	10,072	8,476	61,801
Prodhimi nga Nova Sola Tr 1/322								854	6,391	5,869	6,274	19,388
Prodhimi nga KURUM (Ulez-Shkopet&Bistrica1,2)	9	47,623	36,678	34,155	40,512	31,148	22,427	22,044	19,100	15,949	17,043	286,680
Eksporti (-) nga Linjat e Interkonjeksionit	D	296,337	260,325	257,566	287,271	252,483	125,546	94,747	69,524	117,384	157,436	1,918,619
Importi (+) nga Linjat e Interkonjeksionit	R	133,112	187,286	214,751	255,012	141,967	225,720	249,151	268,891	244,255	246,307	2,166,451
Balanca (Total Interkonjeksioni)	11=(R-D)	163,225	73,039	42,815	32,259	110,516	(100,174)	(154,404)	(199,367)	(126,871)	(88,871)	(247,832)
Energjia Totale në Marrje	12=(1+2+3+4+5+6+7+8+9+10+R)	1,043,146	896,058	875,539	821,446	775,991	721,516	830,840	772,168	660,873	696,107	8,093,684
Humbjet në Rrjetin e Transmetimit (përfshirë Nevojat Vetjake)	13	22,608	17,520	17,149	17,399	16,130	13,854	16,412	15,649	12,894	13,600	163,215
Humbjet në Rrjetin e Transmetimit %	14=13/12	2.17	1.96	1.96	2.12	2.079	1.92	1.98	2.03	1.951	1.95	2.02
Energjia Totale në Dhënie	15=(12-13)	1,020,538	878,538	858,390	804,047	759,861	707,663	814,427	756,519	647,979	682,506	7,930,469
<i>Transmetuar në Linjat e Interkonjeksionit</i>	16=D	296,337	260,325	257,566	287,271	252,483	125,546	94,747	69,524	117,384	157,436	1,918,619
<i>Transmetuar tek Klientët e Kualifikuar</i>		36,554	31,249	50,416	58,814	63,498	62,492	65,728	32,717	29,929	42,721	474,117
<i>EL220-L220KURUM/337</i>		4,874.2	4,501	23,996	24,673	23,274	25,737	24,397	1,319	278.85	290.84	133,343
<i>F.ARRES-T3/653</i>					1,464	1,528	1,473	1,478	1,648	1,438.99	1,485.16	10,516
<i>Titan T1,T2</i>		9,587.6	9,037	4,561	8,997	10,364	10,143	10,428	7,767	3,684.75	10,730.71	85,302
<i>FUSHE KRUJE 220kV-T2/058</i>		5,383.0	707	2,988	9,172	10,809	9,629	5,599	4,064	6,817.58	11,770.94	66,941
<i>N/ST 220/6,3Colacent-T1/336</i>		145.3	1,023	1,734	1,746	2,181	592.8	1,492	1,131	1,230.79	1,442.38	12,718
<i>N/ST i GSA EL 110kV-T1/694</i>		8,955.8	8,466	8,959	2,772	162	161	7,282	8,432	8,297.62	8,887.73	62,376
<i>N/ST i GSA EL 110kV-T2/960</i>		-	-	-	-	-	0	-	-	-	-	0
<i>N/ST i CWI Albania T1/148</i>		466.1	395	531	416.79	572	557	562	396	519.06	599.26	5,014
<i>N/ST i AES EL 110kV-T1/690</i>		158.5	22	-	2,414	7,298	7,073	7,277	7,122	2,267.81	-	33,632
<i>N/ST i AES EL 110kV-T2/692</i>		-	118	147	60	2	0	-	-	4,723.15	7,033.30	12,084
<i>HEC Moglice T1,T2,T3</i>		1.4	1	1	1	0.83	6.60	0.7	0.27	0.68	0.34	13
<i>HEC Peshqesh-T1/633</i>		0.9	9	5	4.99	6	25	38	38	23.05	11.73	162
<i>Spv Blue 1 T1/139</i>						4	14	19	21	22.68	25.85	107
<i>Nova Sola Tr 1/322</i>								4	27	30.99	39.52	102
<i>Lajthiza T1/742</i>		14.4	22	17	26.34	21	228	440	619	459.49	281.65	2,129
<i>HEC Ashta1-T1,HEC Ashta2-T1,</i>		-	-	0.11	0.00	0	0.19	-	-	0.07	-	1
<i>HEC Banje T1,T2</i>		10.8	12	20	19.25	19	20.50	15	15.0	20.84	20.53	174
<i>HEC Fang-T1,T2,</i>		1,300	35	48	24.5	22	23	45	43.9	35.48	26.53	304
<i>Gjenerim KURUM</i>		1,296	5	16	8.59	9.84	19	18	16.57	22.87	19.50	135
<i>FERRO KROM-F1,F2,F3,F4</i>		6,952.9	6,896	7,392	7,013	7,223	6,789	6,634	56	54.06	55.36	49,065
<i>Transmetuar në rrjetin e Shpërndarjes</i>		687,647	586,964	550,408	457,962	443,881	519,626	653,952	654,278	500,667	482,349	5,537,733
<i>Transmetuar në rrjetin e Shpërndarjes 110 kV</i>		599,909	512,591	482,164	400,726	392,970	459,925	583,551	586,728	446,743	425,570	4,890,877
<i>Transmetuar në rrjetin e Shpërndarjes 35 kV</i>		43,519	36,186	33,063	29,398	25,907	32,412	38,243	36,528	28,774	31,684	335,714
<i>Transmetuar në rrjetin e Shpërndarjes 6, 10, 20 kV</i>		44,219	38,186	35,181	27,838	25,004	27,288	32,158	31,022	25,150	25,095	311,142

PARAQITJA SKEMATIKE E FLUKSEVE TE ENERGJISE NE SISTEMIN ELEKTRO-ENERGJITIK SHQIPETAR VITI 2024 (MWh)

Energji e lëvruar nga HEC-et e KESH sha	Energji e lëvruar nga prodhuesit me përparësi lidhur ne OST (kontrate me FTL)	Energji e lëvruar nga H/C ASHTA lidhur ne OST (kontrate me FTL)	Energji e lëvruar nga HEC et Priv/konc lidhur ne OST (Prodhues ne treg te liberalizuar)						Energji ne hyrje nga Interkonieksioni		
3,599,348	753,784	193,979	Kurum	Banje	Moglice	Fangu	Spv Blue I	Nova Solar	Peshqesh	Qami	2,166,451
			286,680	140,223	252,711	176,190	61,801	19,388	79,445	2,833	



LEGJENDA	
FSHU	FURNIZUES I SHËRBIMIT UNIVERSAL
FMF	FURNIZUES I MUNDËSISË SË FUNDIT

*Burimi: OST sha; KESH sha; OSSH sha; FSHU sha; FTL sha; (OSHEE Group sha)*

PRODHI MI GJATE VITI 2024 NGA CENTRALET E LIDHURA NE RRJETIN E TRANSMITIMIT (MW)														
CENTRALI PRODHIUES	MW	SUBJEKTI	LIDHJA	JANAR	SHKURT	MARS	PRILL	MAJ	QERSHOR	KORRIK	GUSHT	SHTATOR	TETOR	10-MIJOROR
HEC "Elektr"	500.00		220kV											
HEC "Kosovë"	600.00	"KESH" sha	220kV	461.940	434.525	312.293	230.865	333.613	349.424	478.833	408.397	294.248	295.210	3.599.348
HEC "V. Dejes"	250.00		220kV											
TEC Vlora	98.00	"KESH" sha	220kV											
	1.448.00													3.599.348
HEC "Uje"	25.20		110kV											
HEC "Shkup"	24.00	"Kurum International" sha.	110kV	47.623	36.678	34.155	40.512	31.148	22.427	22.044	19.100	15.949	17.043	286.680
HEC "Bistrica 1"	22.50		110kV											
HEC "Bistrica 2"	5.00		110kV											
HEC "Peshteg"	28.00		220kV	17.478	8.763	13.692	12.207	10.014	3.162	1.369	1.101	3.413	8.245	79.445
HEC "Fanna"	74.60	"Aven As Energji" sha	220kV	45.494	23.264	15.108	25.046	24.409	19.663	6.020	5.451	2.084	9.651	176.190
HEC "Basit"	73.00	"Devoll Hidropower" sha	220kV	25.295	20.166	19.747	15.855	19.032	8.291	8.757	8.757	6.031	8.292	140.223
HEC "Moglice"	184.00	"Devoll Hidropower" sha	111kV	55.322	39.392	42.313	25.222	28.288	18.209	8.068	7.894	16.987	11.106	252.711
HEC Oami-1	1.73	"Lalibiza Invest" shpk	110kV	628	280	624	521	416	158	68	27	34	76	2.832
	438.00													938.000
HEC "Ashta"	48.20	"ENERGIJ ASHTA" sh.p.k	110kV	29.506	23.646	19.871	15.389	18.185	15.660	20.207	17.545	16.319	18.281	193.979
HEC "Bishnica 2"	2.50	"HEC Bishnica 1.2" shpk	110kV	1.581	919	1.125	1.300	1.093	343	208	161	420	651	7.801
HEC "Danilë"	5.80	"Weseng" shpk	110kV				1.477		237	14	(12)	71	443	10.063
HEC "Trenç"	2.50	"TRJEN" shpk	110kV	3.385	1.447	1.647	1.354							
HEC "Ternovë"	8.39	"TEODORI 2003" shpk	110kV	1.341	1.141	799	879	710	400	602	1.528	402	(16)	7.785
HEC "Gjorçë"	29.61	"DITEKO" shpk	110kV	18.029	13.381	14.589	13.243	11.700	5.457	3.202	3.120	3.592	6.384	92.698
HEC "Shabine 2C"	3.40		110kV	1.270	811	1.654	1.855	1.532	522	375	291	890	642	9.841
HEC "Shabine 2D"	4.89		110kV	1.284	693	1.232	1.351	1.078	366	161	77	593	263	7.016
HEC "Shabine 2E"	3.80	"Hidropower Elektrik" shpk	110kV	2.007	1.008	1.631	1.774	1.579	273	157	196	764	330	9.638
HEC "Shabine"	13.80	"Power-Elektrik-Shabine" shpk	110kV	5.506	3.234	4.359	4.329	4.107	1.274	746	566	1.889	1.416	27.427
HEC "Bete 1"	5.00	"Euron Energy" shpk	110kV											
HEC "Topojan 2"	5.80		110kV	18.863	12.851	16.084	19.841	19.381	7.163	2.630	163	1.905	3.628	102.509
HEC "Bete 2"	11.00	"Alb-Energy" shpk	110kV											
HEC "Topojan 1"	2.90		110kV											
HEC "Ovriost 1 R"	4.80	"Enercal" shpk	110kV											
HEC "Cerruje-1"	2.30		110kV											
HEC "Cerruje-2"	2.80	"Energy partners AF" shpk	110kV					2.280	395	(10)	(10)	485	1.304	12.679
HEC "Rreth"	3.60		110kV	2.734	724	2.160								
HEC "Ranomir 1.2"	8.10	"C & S Construction Energy" shpk	110kV	5.256	3.406	4.759	4.862	3.670	953	35	(12)	1.349	2.211	26.389
HEC "Ranomir 3.4"	8.85	"C & S Energy" shpk	110kV	4.942	2.854	4.146	3.709	2.839	922	408	307	910	1.457	22.494
HEC "Llana"	13.62	"Gjo-Sna POWER" shpk	110kV	5.765	3.130	5.921	7.795	6.321	1.853	654	369	825	1.122	33.763
HEC "Llengere"	8.04	"Llengere & Energy" shpk	110kV	4.656	2.928	5.400	2.993	1.464	328	157	43	340	174	17.983
HEC "Lura 1"	6.54		110kV											
HEC "Lura 2"	4.02	"Erdat Lura" shpk	110kV				5.104	3.834	641	104	78	1.420	3.071	301.65
HEC "Lura 3"	5.66		110kV	7.173	2.988	5.752								
HEC "Mala"	5.46	"Gjener Bsc" shpk	110kV	2.270	1.077	1.933	1.637	1.287	137	(17)	(16)	333	777	9.418
HEC "Prelja"	14.97	"Prele Energji" shpk	110kV	6.318	1.592	5.767	4.789	3.948	676	(9)	15	2.345	3.541	28.982
HEC "Cemerica 1"	0.88		110kV											
HEC "Cemerica 2"	1.08	"REJ ENERGY" shpk	110kV				1.672	782	128	(13)	(14)	89	(15)	8.880
HEC "Cemerica 3"	2.10		110kV	2.316	1.621	2.315								
HEC "TUC"	4.47		110kV											
HEC "Lumzi"	11.00	MC Inert Lumzi	110kV	5.612	2.148	3.408	3.031	2.153	842	98	386	749	1.761	20.189
HEC "Denas"	14.50	"Denas Power" shpk	110kV	5.009	3.688	5.714	3.915	2.065	597	290	78	458	293	23.006
Llënga "1"	1.75		110kV											
Llënga "2"	0.30	"HEC LLËNGE" sh.p.k	110kV				1.493	1.136	239	2	24	671	444	8.193
Llënga "3"	1.50		110kV	1.627	940	1.616								
HEC Shpella Poshte 2	2.30	Liria Energji shpk	110kV	1.906	869	1.209	1.405	1.030	275	141	99	417	375	7.725
HEC Germani 1	4.80		110kV											
HEC Germani 2	1.50	SA/GA-MAT shpk	110kV	2.124	855	1.362	1.376	922	147	(2)	2	241	575	7.602
HEC Lashkiza 1	4.08		110kV											
HEC Lashkiza 2	0.88	HEC Lashkiza shpk	110kV	1.160	615	836	742	622	179	9	(8)	11	61	4.227
HEC Seta 1-2	7.45		110kV											
HEC Seta 3	2.72	"Hydro Seta" sh.p.k	110kV											
HEC Seta 4	4.73		110kV	6.362	3.220	4.733	4.519	3.427	947	(25)	(26)	1.165	1.809	26.130
HEC Darsi 1.2	14.96	Henz Energy shpk	110kV	7.202	2.769	3.731	4.448	3.216	648	14	(9)	749	2.130	24.898
HEC Egnatia	5.00	REMI shpk	110kV	1.937	879	1.283	1.119	1.125	480	263	168	229	442	7.926
HEC Seta & Zais684	14.96	SEKA Hidropower shpk	110kV	9.701	5.365	9.523	8.768	7.598	2.127	474	308	4.071	5.637	83.573
HEC ARS11	3.13	HEC Arsi shpk	110kV	2.440	1.467	1.887	1.444	1.325	472	300	130	240	872	10.498
HEC KASKADA GJADER T1/344	24.90	P.P. Gjader shpk	110kV	6.574	1.863	4.312	3.701	3.886	2.845	(29)	(29)	1.292	3.845	31.527
HEC-et Dragobitë & Ceremi/686	21.90	Dragobia Energy shpk	110kV	5.672	4.781	7.029	9.657	6.330	2.774	268	122	1.188	3.217	41.637
HEC Veshnica 1.2	13.90	"Kallsi Hidropower" shpk	110kV	2.059	1.204	2.121	7.375	10.412	4.350	244	(19)	1.437	1.939	31.122
	353.81													
				153.079	86.206	129.836	133.699	113.638	36.227	12.054	7.893	31.369	49.783	753.784

PRODHI MI GJATE VITI 2024 NGA CENTRALET E LIDHURA NE RRJETIN E SHPERNDARJES (MW)														
HEC ET DHE KAPACITETI	MW	SUBJEKTI	LIDHJA	JANAR	SHKURT	MARS	PRILL	MAJ	QERSHOR	KORRIK	GUSHT	SHTATOR	TETOR	10-MIJOROR
HEC "Llanbuzë"	5.00	"HEC Llanbuzë" sha	10kV	21.114	1.890	1.799	1.528	1.999	838	511	348	402	778	12.471
HEC "Lecine"	4.00	"EMIKEL 2003" sh.p.k	10kV	280	263	281	263	284	192	136	110	216	251	2.275
HEC "Convade"	0.20		10kV	107	92	117	105	88	20	0	0	22	11	563
HEC "Smokhine"	9.20	"Albanian Green Energy" sh.p.k	35kV	3.740	2.643	3.498	3.093	2.784	2.038	1.578	1.373	1.358	1.514	23.617
HEC "Buhçin"	0.60		10kV	146	90	115	142	123	77	57	48	80	78	927
HEC "Housh"	0.40		10kV	68	60	83	51	53	22	0	0	13	21	335
HEC "Zeqan"	0.63		6kV	145	151	170	159	152	119	95	76	81	104	1.251
HEC "Arras"	4.80		20kV	2.524	2.427	2.296	2.277	1.951	621	222	0	601	657	13.377
HEC "Ovriost"	1.20		10kV	735	664	674	725	762	372	173	61	80	113	4.359
HEC "Labinot"	1.40		10kV	482	770	794	755	739	609	258	136	475	585	6.633
HEC "Dakastina"	0.64		10kV	160	154	179	226	274	243	271	297	275	268	2.348
HEC "Marian"	0.20		10kV	0	0	0	0	0	0	0	0	0	0	0
HEC "Lozhan"	0.10		10kV	72	57	74	56	37	4	0	0	0	0	301
HEC "Barmash"	0.83		10kV	216	157	232	121	86	16	0	0	0	0	827
HEC "Treska 2"	0.25		10kV	117	99	108	98	68	21	0	0	0	0	524
HEC "Nikollce"	0.70	"Balkan Green Energy" shpk	10kV	270										





"KESH" sh.a.***	5.14	Central Fotovoltaik i Dajës së Oksaullit, Vau i Dejës	221 kV	368	450	561	717	756	805	885	637	0	0	5,179
"Tigris 1"****	50.00	TEC i Hundrueshëm i Instaluar në portin e Triportit në Gjirin e Vloebës	220 kV	134	34	322	208	0	0	27	7,636	1,855	2,732	12,948
"Tigris 2"****	255.00													
														6,367,197

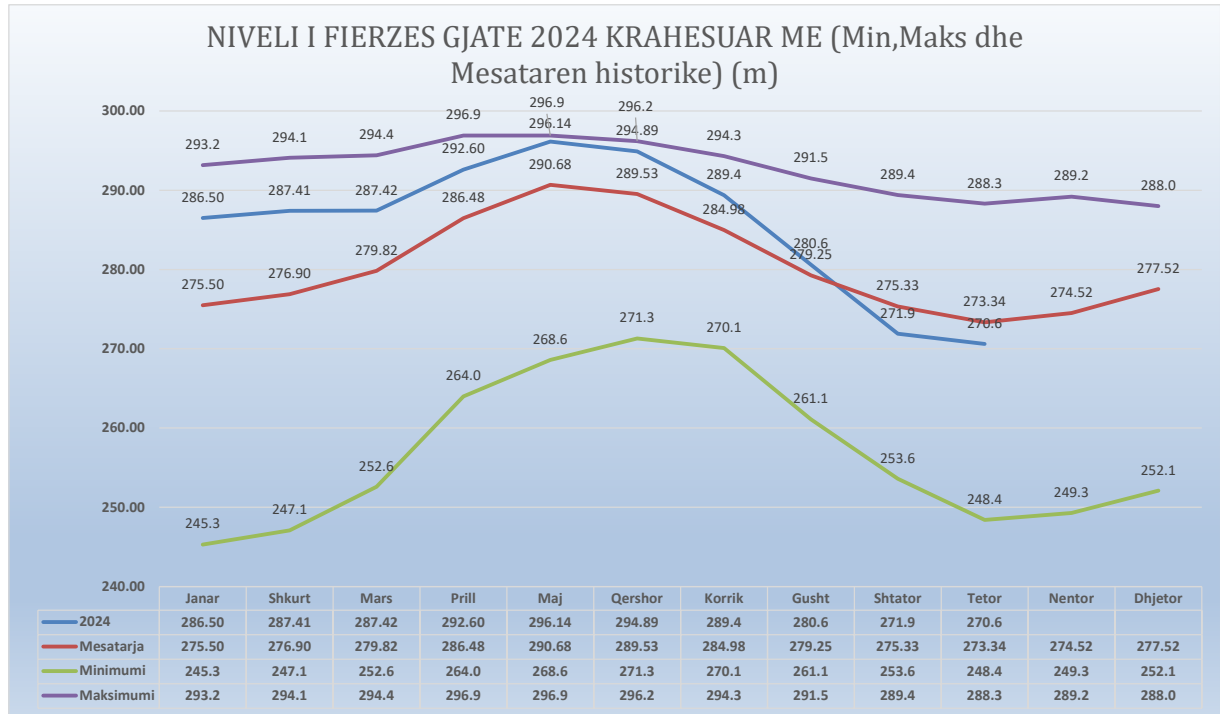
Kapaciteti Instaluar i qitëve prodhuese në prodhim 3,079.11 MW

\*\*\* Përshite si sasi energjie në prodhimin neto të KESH sh.a, sipas kontratës përkatëse.

Burimi: OST sh.a; KESH sh.a; OSSH sh.a; FSHU sh.a; FTL sh.a; OSHEE Group sh.a

NIVELI I FIERZES 1991-2024												
	Janar	Shkurt	Mars	Prill	Maj	Qershor	Korrik	Gusht	Shtator	Tetor	Nentor	Dhjetor
1991	254.4	260.8	268.6	279.9	293.4	296.1	294.0	291.5	289.4	288.3	288.8	285.1
1992	278.0	274.1	268.0	278.8	281.0	279.6	275.2	268.7	263.9	271.4	281.9	280.6
1993	275.2	265.3	264.7	278.5	280.5	277.3	271.0	261.1	253.6	249.9	255.6	270.2
1994	254.4	260.8	268.6	279.9	293.4	296.1	294.0	291.5	289.4	288.3	288.8	285.1
1995	253.8	260.3	262.5	275.3	289.0	288.7	284.5	282.2	288.2	283.8	279.9	287.5
1996	287.1	288.7	286.5	294.7	295.8	293.1	287.6	282.2	285.1	284.3	289.2	291.3
1997	289.4	284.5	281.7	285.2	294.1	292.0	287.0	280.0	272.9	272.4	270.8	277.2
1998	273.7	270.0	265.2	278.9	288.1	287.4	281.8	277.6	276.0	277.1	279.0	277.1
1999	272.7	275.6	281.5	290.5	295.9	293.3	288.3	279.5	271.0	257.6	263.6	276.9
2000	276.4	276.7	276.8	286.9	286.6	280.1	273.5	267.5	261.6	248.4	249.3	252.1
2001	253.6	258.2	275.1	282.9	287.6	283.8	273.7	271.1	269.2	263.6	263.2	252.1
2002	245.3	247.1	252.6	264.0	268.6	271.3	270.1	267.8	274.3	286.1	285.3	284.0
2003	291.1	289.5	286.3	287.0	292.3	290.3	285.9	280.8	276.0	282.6	285.6	283.3
2004	284.7	290.8	293.4	296.0	296.2	296.2	293.1	286.3	281.1	280.0	286.1	288.0
2005	281.2	281.5	293.3	296.1	295.6	294.1	286.7	277.2	266.5	256.9	253.6	279.0
2006	283.5	288.6	294.4	295.9	296.5	295.9	293.8	290.2	285.3	278.7	266.2	256.2
2007	256.1	263.7	272.0	276.8	276.8	274.8	268.5	263.6	261.8	261.1	275.8	282.1
2008	285.1	289.7	290.9	295.5	295.3	295.7	289.3	288.6	283.9	280.9	285.2	286.5
2009	283.6	281.8	283.4	292.5	293.7	292.4	288.0	281.2	276.2	271.6	266.3	280.1
2010	290.1	289.2	293.9	296.0	296.3	294.4	291.8	288.6	284.9	285.2	284.3	287.5
2011	281.6	274.1	275.0	276.6	281.0	286.1	284.7	279.0	273.9	268.2	261.6	264.5
2012	265.8	274.1	262.0	280.2	293.4	294.4	288.4	280.4	261.4	261.6	269.0	276.6
2013	278.3	274.1	294.8	296.9	296.9	294.2	289.7	283.6	280.8	281.4	282.5	276.1
2014	275.1	274.1	274.6	285.3	292.9	294.9	291.7	286.8	285.5	285.0	284.8	286.3
2015	288.7	274.1	292.2	296.3	296.1	293.3	287.5	280.1	272.1	275.4	278.9	275.9
2016	289.9	274.1	291.8	296.5	296.2	295.6	290.5	285.4	283.3	288.4	288.9	281.6
2017	271.5	274.1	280.9	278.7	281.6	272.4	270.2	268.0	271.0	264.6	269.6	289.9
2018	289.7	274.1	295.0	296.5	296.4	296.0	294.0	287.5	277.9	270.2	266.5	267.3
2019	267.3	274.1	272.7	279.9	289.9	292.7	287.6	278.5	274.2	268.6	273.2	275.6
2020	271.6	272.0	283.5	288.6	293.6	291.7	284.6	276.5	273.5	274.1	268.7	272.7
2021	291.7	294.1	292.6	294.3	296.7	291.7	282.7	274.3	271.3	267.7	267.8	275.1
2022	270.7	268.3	260.7	282.5	289.0	288.0	281.5	270.4	271.4	267.9	281.7	291.7
2023	293.2	286.4	291.5	295.6	296.1	296.3	291.4	281.3	270.8	263.5	280.1	284.5
2024	286.5	287.4	287.4	292.6	296.1	294.9	289.4	280.6	271.9	270.6		

	Janar	Shkurt	Mars	Prill	Maj	Qershor	Korrik	Gusht	Shtator	Tetor	Nentor	Dhjetor
2024	286.50	287.41	287.42	292.60	296.14	294.89	289.4	280.6	271.9	270.6		
Mesatarja	275.50	276.90	279.82	286.48	290.68	289.53	284.98	279.25	275.33	273.34	274.52	277.52
Minimumi	245.3	247.1	252.6	264.0	268.6	271.3	270.1	261.1	253.6	248.4	249.3	252.1
Maksimumi	293.2	294.1	294.4	296.9	296.9	296.2	294.3	291.5	289.4	288.3	289.2	288.0

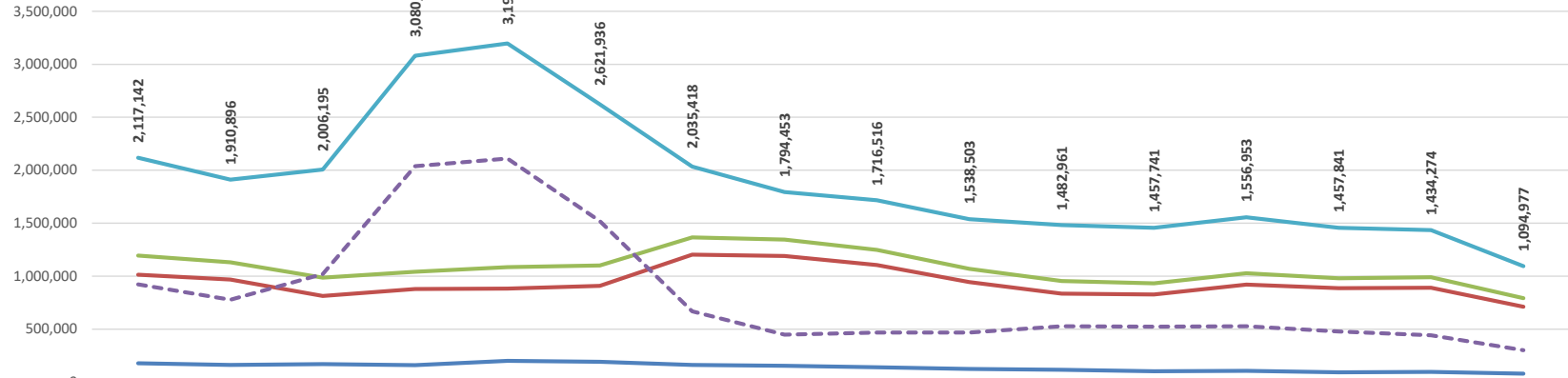


Burimi: KESH sha; OST sha

### HUMBJET NE RRJETIN E SHPERNDARJES 2009-2024 (MWh)

	2009	2010	2011	2012	2013	2014	2015	2016	2017	2018	2019	2020	2021	2022	2023	2024 (10-mujor)
HUMBJE TEKNIKE NE TL (N/ST)	178,738	163,546	170,937	161,831	201,684	193,208	162,725	155,629	141,707	125,974	117,739	103,729	107,340	93,331	98,166	80,846
HUMBJE TEKNIKE NE ZONAT E OSSH	1,015,450	968,535	814,826	879,616	884,360	908,416	1,203,793	1,190,872	1,106,007	944,587	836,561	828,906	921,330	886,682	892,334	712,172
TOTALI I HUMBJEVE TEKNIKE OSSH	1,194,188	1,132,081	985,763	1,041,447	1,086,044	1,101,624	1,366,518	1,346,501	1,247,714	1,070,560	954,300	932,635	1,028,670	980,013	990,500	793,018
HUMBJE JOTOKNIKE OSSH	922,954	778,815	1,020,432	2,039,227	2,110,575	1,520,312	668,900	447,952	468,802	467,943	528,661	525,106	528,283	477,828	443,774	301,959
TOTALI I HUMBJEVE OSSH	2,117,142	1,910,896	2,006,195	3,080,674	3,196,618	2,621,936	2,035,418	1,794,453	1,716,516	1,538,503	1,482,961	1,457,741	1,556,953	1,457,841	1,434,274	1,094,977

### HUMBJET NE RRJETIN E SHPERNDARJES 2009-2024(MWh)



	2009	2010	2011	2012	2013	2014	2015	2016	2017	2018	2019	2020	2021	2022	2023	2024 (10-mujor)
HUMBJE TEKNIKE NE TL (N/ST)	178,738	163,546	170,937	161,831	201,684	193,208	162,725	155,629	141,707	125,974	117,739	103,729	107,340	93,331	98,166	80,846
HUMBJE TEKNIKE NE ZONAT E OSSH	1,015,450	968,535	814,826	879,616	884,360	908,416	1,203,793	1,190,872	1,106,007	944,587	836,561	828,906	921,330	886,682	892,334	712,172
TOTALI I HUMBJEVE TEKNIKE OSSH	1,194,188	1,132,081	985,763	1,041,447	1,086,044	1,101,624	1,366,518	1,346,501	1,247,714	1,070,560	954,300	932,635	1,028,670	980,013	990,500	793,018
HUMBJE JOTOKNIKE OSSH	922,954	778,815	1,020,432	2,039,227	2,110,575	1,520,312	668,900	447,952	468,802	467,943	528,661	525,106	528,283	477,828	443,774	301,959
TOTALI I HUMBJEVE OSSH	2,117,142	1,910,896	2,006,195	3,080,674	3,196,618	2,621,936	2,035,418	1,794,453	1,716,516	1,538,503	1,482,961	1,457,741	1,556,953	1,457,841	1,434,274	1,094,977

*Burimi: OSSH sha / (OSHEE Group sha)*

Viti 2014	Te arketueshme	Faturuar 2014	arketimi per faturat e 2014	Arketimi per faturat e 2007-2013	Arketimi total	Te Arketueshme per energjine e faturuar ne vitin 2014	Ndryshimi I gjendjes se Llogarive te arketueshme gjate vitit 2014	Suarje Detyrimesh me VKM nr 198 dt 03.04.2014
	71,374,447							
	2	2	5	7	6=5+7	9=(2-5)	10=(2-5-7-a)	a
Janar	72,385,326	4,899,949	3,593,388	295,782	3,889,070	1,306,661	1,010,880	0
Shkurt	73,231,148	4,623,941	1,224,858	2,553,261	3,778,119	3,399,883	845,821	0
Mars	73,905,562	4,645,561	3,226,836	744,315	3,971,150	1,478,729	674,414	0
Prill	70,676,446	4,538,921	2,291,430	680,444	3,972,144	3,972,144	3,242,294	3,795,873
Maj	71,544,530	4,190,118	3,345,044	374,413	3,719,457	845,074	868,084	(297,423)
Qershor	72,309,337	4,025,464	3,065,523	295,134	3,360,657	959,941	664,807	0
Korrik	72,816,893	4,097,547	3,184,902	305,088	3,489,991	912,644	607,556	0
Gusht	73,694,774	4,299,885	3,115,141	311,467	3,426,607	1,188,744	877,881	(4,604)
Shtator	72,527,145	4,065,785	3,343,188	1,069,912	4,413,100	723,618	1,146,300	829,235
Tetor	72,630,240	4,280,796	3,647,110	457,224	4,104,334	633,686	103,095	73,367
Netor	72,771,144	4,504,528	3,459,192	904,432	4,363,624	1,045,336	140,904	0
Dhjetor	71,086,047	4,985,556	4,273,473	2,077,180	6,350,653	711,083	1,365,097	0
Total	53,157,974		38,770,084	10,068,842	48,838,927	14,287,890		4,287,448

FATURIM-ARKETIMET DHE NDRYSHIMI I GJENDJES DEBITORE GJATE VITIT 2015 (0000 LEKE)

Viti 2015	Te arketueshme	Faturuar 2015	arketimi per faturat e 2015	Arketimi per faturat e 2007-2014	Arketimi total	Te Arketueshme per energjine e faturuar ne vitin 2015	Ndryshimi I gjendjes se Llogarive te arketueshme gjate vitit 2015	Suarje Detyrimesh
	71,066,047	2	5	7	6=5+7	9=(2-5)	10=(2-5-7-a)	a
Janar	65,787,460	2	58,385	5,560,203	5,618,588	(58,383)	5,618,586	0
Shkurt	59,011,172	2	4,241,484	2,444,805	6,686,289	(4,241,482)	6,686,287	0
Mars	53,383,725	2	4,663,802	1,133,648	5,797,450	(4,663,800)	5,797,448	0
Prill	47,129,425	2	4,470,298	366,900	4,837,198	(4,470,296)	6,174,301	1,337,105
Maj	40,663,646	2	4,234,873	504,756	4,739,629	(4,234,871)	6,465,778	1,276,151
Qershor	36,200,965	2	4,081,633	309,420	4,391,053	(4,081,631)	4,462,681	71,630
Korrik	31,391,091	2	4,246,167	372,576	4,618,743	(4,246,165)	4,980,871	191,233
Gusht	26,213,833	2	4,481,964	354,283	4,836,247	(4,481,962)	5,177,258	340,013
Shtator	21,228,540	2	4,700,633	293,262	4,993,295	(4,700,631)	4,993,293	0
Tetor	21,053,851	4,683,924	4,541,794	308,818	4,850,612	142,130	166,689	0
Netor	21,726,696	4,991,543	4,020,208	298,490	4,318,698	971,335	673,845	0
Dhjetor	22,570,251	4,587,243	4,750,949	277,740	5,028,688	1,121,296	843,555	0
Total	15,447,727		48,491,589	12,225,002	60,716,591	32,943,862		3,666,932

FATURIM-ARKETIMET DHE NDRYSHIMI I GJENDJES DEBITORE GJATE VITIT 2016 (0000 LEKE)

Viti 2016	Te arketueshme	Faturuar 2016	arketimi per faturat e 2016	Arketimi per faturat e 2007-2015	Arketimi total	Te Arketueshme per energjine e faturuar ne vitin 2016	Ndryshimi I gjendjes se Llogarive te arketueshme gjate vitit 2016	Suarje Detyrimesh
	68,003,889	2	5	7	6=5+7	9=(2-5)		a+b
Janar	69,383,532	5,987,971	11,010	5,396,619	5,407,628	5,976,962	580,343	0
Shkurt	69,618,271	5,445,503	3,744,680	1,455,075	5,199,755	1,709,252	234,739	0
Mars	69,027,158	5,511,517	4,673,435	531,195	5,204,630	840,882	300,887	0
Prill	69,786,727	4,824,972	4,641,557	324,811	4,966,368	186,420	136,431	0
Maj	67,042,795	4,835,733	4,504,256	276,818	4,781,074	331,477	2,745,932	2,800,490
Qershor	67,501,589	4,525,728	4,203,847	245,816	4,449,663	321,881	458,794	0
Korrik	68,121,673	5,241,459	4,390,083	231,293	4,621,375	851,376	620,084	0
Gusht	68,364,412	5,309,834	4,799,986	267,109	5,067,095	500,848	243,729	0
Shtator	68,350,354	4,846,463	4,650,853	203,609	4,854,462	192,623	146,668	0
Tetor	68,499,705	4,834,628	4,480,377	200,903	4,681,280	354,252	149,251	0
Netor	69,372,496	5,236,378	4,175,054	188,533	4,363,587	1,061,324	872,791	0
Dhjetor	70,720,061	6,410,681	4,854,705	208,411	5,063,116	1,555,976	1,347,565	0
Total	62,012,893		49,129,839	9,537,411	58,667,251	12,883,054		2,800,490

FATURIM-ARKETIMET DHE NDRYSHIMI I GJENDJES DEBITORE GJATE VITIT 2017 (0000 LEKE)

Viti 2017	Te arketueshme	Faturuar 2017	arketimi per faturat e 2017	Arketimi per faturat e 2007-2016	Arketimi total	Te Arketueshme per energjine e faturuar ne vitin 2017	Ndryshimi I gjendjes se Llogarive te arketueshme gjate vitit 2017	Suarje Detyrimesh
	70,720,061	2	5	7	6=5+7	9=(2-5)		
Janar	71,449,571	6,192,711	2,680	5,460,521	5,463,201	6,190,311	729,510	0
Shkurt	71,240,178	6,321,527	3,823,686	1,601,212	5,424,919	1,490,921	394,418	0
Mars	70,863,992	5,141,218	4,963,971	661,534	5,625,505	177,247	484,187	0
Prill	70,863,942	4,857,464	4,525,615	331,899	4,857,514	331,849	50	0
Maj	70,398,535	4,667,810	4,590,520	533,607	5,133,217	68,290	465,407	0
Qershor	70,787,603	4,675,024	4,055,720	251,137	4,306,856	620,204	389,068	0
Korrik	71,230,868	5,435,009	4,590,640	302,111	4,892,751	420,244	632,364	0
Gusht	71,661,546	5,635,939	4,996,203	299,058	5,295,261	699,736	340,678	0
Shtator	71,152,686	4,824,463	5,046,489	286,834	5,333,323	222,026	508,860	0
Tetor	71,047,597	4,902,445	4,759,610	247,921	5,007,534	142,834	105,089	0
Netor	72,031,524	5,527,306	4,311,657	229,722	4,541,379	1,213,649	983,277	0
Dhjetor	72,840,682	6,347,229	5,153,618	376,452	5,530,070	1,175,611	817,158	0
Total								

FATURIM-ARKETIMET DHE NDRYSHIMI I GJENDJES DEBITORE GJATE VITIT 2018 (0000 LEKE)

Viti 2018	Te arketueshme	Faturuar 2018	arketimi per faturat e 2018	Arketimi per faturat e 2007-2017	Arketimi total	Te Arketueshme per energjine e faturuar ne vitin 2018	Ndryshimi I gjendjes se Llogarive te arketueshme gjate vitit 2018	Suarje Detyrimesh
	72,840,682	2	5	7	6=5+7	9=(2-5)		
Janar	72,669,803	5,939,299	62,280	6,055,898	6,118,178	5,877,019	178,779	0
Shkurt	72,671,709	5,685,334	3,857,605	1,823,223	5,680,828	1,827,729	1,905	0
Mars	72,336,005	5,680,352	5,325,171	690,885	6,016,056	355,181	335,704	0
Prill	71,388,405	4,671,224	5,191,294	427,530	5,618,824	520,700	947,600	0
Maj	70,904,609	4,724,173	4,839,322	375,617	5,214,939	185,179	482,797	0
Qershor	71,142,033	4,976,161	4,395,221	343,516	4,738,737	580,940	237,425	0
Korrik	71,320,917	5,403,874	4,895,796	329,195	5,224,991	508,078	178,883	0
Gusht	71,608,055	5,805,751	5,141,751	376,861	5,518,612	664,000	287,139	0
Shtator	71,254,095	5,017,859	5,088,650	312,269	5,400,919	40,791	353,061	0
Tetor	70,741,012	4,975,803	5,162,026	327,849	5,490,875	186,423	512,982	0
Netor	71,270,659	5,318,350	4,317,124	471,580	4,788,703	1,001,226	529,647	0
Dhjetor	71,896,707	6,625,280	5,579,121	420,120	5,999,241	1,046,168	626,048	0
Total								

FATURIM-ARKETIMET DHE NDRYSHIMI I GJENDJES DEBITORE GJATE VITIT 2019 (0000 LEKE)

Viti 2019	Te arketueshme	Faturuar 2019	arketimi per faturat e 2019	Arketimi per faturat e 2007-2018	Arketimi total	Te Arketueshme per energjine e faturuar ne vitin 2019	Ndryshimi I gjendjes se Llogarive te arketueshme gjate vitit 2019	Suarje Detyrimesh
	71,896,707	2	5	7	6=5+7	9=(2-5)		
Janar	72,594,758	6,170,114	11,908	6,000,155	6,012,063	6,696,206	698,051	0
Shkurt	72,200,340	5,919,929	4,371,750	1,844,611	6,216,361	1,448,193	394,418	0
Mars	71,887,240	5,496,920	5,066,376	743,045	5,809,420	430,545	312,580	0
Prill	71,416,559	5,155,722	5,183,806	443,917	5,627,003	27,264	471,281	0
Maj	71,210,144	5,075,626	4,989,283	372,578	5,361,861	166,343	206,415	0
Qershor	71,763,430	5,224,553	4,464,984	306,283	4,771,267	859,560	553,286	0
Korrik	71,886,698	5,605,451	4,991,696	301,631	5,293,327	524,283	423,283	0
Gusht	72,343,496	6,108,924	5,315,417	328,709	5,644,126	785,507	456,798	0
Shtator	71,822,038	5,207,417	5,446,625	282,250	5,728,875	239,208	521,458	0
Tetor	71,361,843	4,992,973	5,051,814	401,254	5,394,327	58,841	460,195	0
Netor	72,178,116	5,292,443	4,247,863	228,307	4,476,170	1,044,580	816,273	0
Dhjetor	72,572,675	6,251,767	5,518,118	338,090	5,856,208	732,649	395,500	0
Total								

FATURIM-ARKETIMET DHE NDRYSHIMI I GJENDJES DEBITORE GJATE VITIT 2020 (0000 LEKE)

Viti 2020	Te arketueshme	Faturuar 2020	arketimi per faturat e 2020	Arketimi per faturat e 2007-2019	Arketimi total	Te Arketueshme per energjine e faturuar ne vitin 2020	Ndryshimi I gjendjes se Llogarive te arketueshme gjate vitit 2020	Suarje Detyrimesh
	72,573,657	2	5	7	6=5+7	9=(2-5)		
Janar	73,370,006	6,508,770	16,409	5,696,013	5,712,421	6,492,362	796,349	0
Shkurt	73,517,039	6,106,516	4,215,767	1,743,716	5,959,484	1,899,749	147,033	0
Mars	73,916,688	5,129,481	4,299,341					

Tëtor	76,284,525	5,544,032	5,739,826	452,913	6,192,739	195,794	648,707	0
Nëntor	76,704,823	5,794,416	5,080,754	293,364	5,374,118	713,662	420,298	0
Dhjetor	78,394,397	7,572,741	5,583,186	299,984	5,883,170	1,989,557	1,689,574	0
<b>Total</b>								

FATURIM-ARKE TËMET DHE NDRYSHIMI I GJENDJES DEBITORE GJATE VITIT 2022 (000 L.EKE)

Viti 2022	Te arketueshme	Faturuar 2022	arketimi per faturat e 2022	Arketimi per faturat e 2007-2022	Arketimi total	Te Arketueshme per energjine e faturuar ne vitin 2022	Ndryshimi I gjendjes se Llogarive te arketueshme gjate vitit 2022	Shuarje Detyrimesh
	2		5	7	6=5+7	9=(2-5)		
Janar	78,394,397	2	5	7	6=5+7	9=(2-5)		
Janar	79,437,476	7,902,372	4,793,436	2,065,757	6,859,193	3,108,836	1,043,079	0
Shkurt	80,288,829	7,515,228	4,569,541	2,094,835	6,664,376	2,946,187	851,353	0
Mars	80,426,272	7,857,071	6,091,412	1,028,214	7,119,627	1,165,658	137,444	0
Prill	79,617,380	6,436,945	6,531,117	464,721	6,995,838	344,172	903,893	0
Maj	79,499,359	6,188,303	5,969,488	336,836	6,306,324	218,815	118,021	0
Qershor	79,997,520	6,553,744	5,610,349	445,234	6,055,583	943,395	498,162	0
Korrrik	80,005,681	6,553,744	6,230,846	314,737	6,545,583	322,898	8,161	0
Gusht	79,791,652	7,258,471	7,103,150	409,370	7,512,519	255,341	214,028	0
Shator	78,554,734	6,162,925	7,005,112	394,733	7,399,844	842,187	1,235,919	0
Tëtor	77,962,798	5,848,663	6,104,850	335,749	6,440,598	256,187	591,935	0
Nëntor	78,481,014	6,502,315	7,98,011	5,186,087	5,984,099	5,704,303	518,216	0
Dhjetor	79,249,438	7,458,986	6,200,688	489,874	6,690,562	1,258,298	768,423	0
<b>Total</b>		82,089,187			81,224,146			

FATURIM-ARKE TËMET DHE NDRYSHIMI I GJENDJES DEBITORE GJATE VITIT 2023 (000 L.EKE)

Viti 2023	Te arketueshme	Faturuar 2023	arketimi per faturat e 2023	Arketimi per faturat e 2007-2023	Arketimi total	Te Arketueshme per energjine e faturuar ne vitin 2023	Ndryshimi I gjendjes se Llogarive te arketueshme gjate vitit 2023	Shuarje Detyrimesh
	2		5	7	6=5+7	9=(2-5)		
Janar	79,810,824	2	5	7	6=5+7	9=(2-5)		
Janar	80,265,490	7,236,860	17,571	6,864,058	6,881,621	7,219,288	355,238	0
Shkurt	80,928,747	7,477,014	4,674,206	2,139,553	6,813,758	3,802,809	663,256	0
Mars	80,025,935	6,588,875	6,660,084	831,603	7,491,687	71,209	902,812	0
Prill	80,223,225	6,321,511	5,757,211	367,010	6,124,221	564,300	197,290	0
Maj	79,402,801	5,993,172	6,505,113	308,493	6,813,596	511,941	820,424	0
Qershor	79,665,073	6,074,125	5,550,743	263,118	5,813,853	523,382	262,272	0
Korrrik	81,307,082	7,326,635	5,416,995	267,632	5,684,626	1,909,640	1,642,009	0
Gusht	81,148,340	7,281,460	6,976,104	464,097	7,440,201	305,356	158,741	0
Shator	80,122,629	6,339,551	6,941,811	423,452	7,365,263	602,259	1,025,711	0
Tëtor	78,896,288	5,987,458	6,799,334	414,465	7,213,799	5,572,992	1,236,341	0
Nëntor	79,489,986	6,806,859	5,995,279	217,883	6,213,161	6,588,977	693,698	0
Dhjetor	80,898,725	7,990,009	6,461,676	119,594	6,581,270	7,870,415	1,408,739	0
<b>Total</b>		81,423,530			80,435,057			

FATURIM-ARKE TËMET DHE NDRYSHIMI I GJENDJES DEBITORE GJATE VITIT 2024 (000 L.EKE)

Viti 2024	Te arketueshme	Faturuar 2024	arketimi per faturat e 2024	Arketimi per faturat e 2007-2024	Arketimi total	Te Arketueshme per energjine e faturuar ne vitin 2024	Ndryshimi I gjendjes se Llogarive te arketueshme gjate vitit 2024	Shuarje Detyrimesh
	2		5	7	6=5+7	9=(2-5)		
Janar	80,898,725	2	5	7	6=5+7	9=(2-5)		
Janar	80,868,782	7,374,630	43,814	7,300,873	7,344,687	7,330,816	29,943	0
Shkurt	80,512,066	6,650,006	4,919,897	2,086,825	7,006,722	1,750,109	356,716	0
Mars	79,792,096	6,079,325	5,082,823	915,472	6,798,295	195,503	719,970	0
Prill	78,750,197	5,298,149	5,791,231	548,817	6,340,048	493,082	1,041,899	0
Maj	78,164,922	5,291,466	5,330,756	545,985	5,876,740	39,290	585,274	0
Qershor	78,955,726	5,903,682	4,859,817	253,061	5,112,878	1,043,865	790,804	0
Korrrik	79,959,320	7,200,506	5,762,477	434,435	6,196,912	1,438,029	1,003,594	0
Gusht	80,757,168	7,521,011	6,460,912	266,154	6,727,066	1,064,002	797,848	0
Shator	79,508,725	5,852,055	6,768,560	331,938	7,100,498	916,506	1,248,443	0
Tëtor	78,494,008	5,427,015	6,215,717	226,015	6,441,732	5,201,000	1,014,717	0
Nëntor								0
Dhjetor								0
<b>Total</b>		62,600,747			64,945,578			

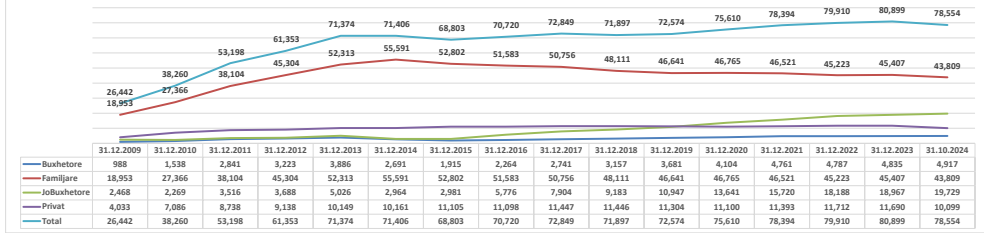
Burimi: OSSH sha; FSHU sha; FTL sha / OSHEE sha

ECURIA E GJENDEJES DEBITORE NDAJ OPERATORIT TË SHËPËRNDARJES SIPAS KATEGORIVE 2010-2024 (000 000 LEKË)

Operatori	2010	2011	2012	2013	2014	2015	2016	2017	2018	2019	2020	2021	2022	2023	2024
Shkurtimi	1.12	1.27	1.41	1.55	1.70	1.84	1.98	2.12	2.26	2.40	2.54	2.68	2.82	2.96	3.10
Shërbime	1.28	1.43	1.58	1.73	1.88	2.03	2.18	2.33	2.48	2.63	2.78	2.93	3.08	3.23	3.38
Material	1.44	1.59	1.74	1.89	2.04	2.19	2.34	2.49	2.64	2.79	2.94	3.09	3.24	3.39	3.54
Operacionale	1.60	1.75	1.90	2.05	2.20	2.35	2.50	2.65	2.80	2.95	3.10	3.25	3.40	3.55	3.70
Financiare	1.76	1.91	2.06	2.21	2.36	2.51	2.66	2.81	2.96	3.11	3.26	3.41	3.56	3.71	3.86
Administrative	1.92	2.07	2.22	2.37	2.52	2.67	2.82	2.97	3.12	3.27	3.42	3.57	3.72	3.87	4.02
Investive	2.08	2.23	2.38	2.53	2.68	2.83	2.98	3.13	3.28	3.43	3.58	3.73	3.88	4.03	4.18
Financiare	2.24	2.39	2.54	2.69	2.84	2.99	3.14	3.29	3.44	3.59	3.74	3.89	4.04	4.19	4.34
Administrative	2.40	2.55	2.70	2.85	3.00	3.15	3.30	3.45	3.60	3.75	3.90	4.05	4.20	4.35	4.50
Operacionale	2.56	2.71	2.86	3.01	3.16	3.31	3.46	3.61	3.76	3.91	4.06	4.21	4.36	4.51	4.66
Financiare	2.72	2.87	3.02	3.17	3.32	3.47	3.62	3.77	3.92	4.07	4.22	4.37	4.52	4.67	4.82
Administrative	2.88	3.03	3.18	3.33	3.48	3.63	3.78	3.93	4.08	4.23	4.38	4.53	4.68	4.83	4.98
Operacionale	3.04	3.19	3.34	3.49	3.64	3.79	3.94	4.09	4.24	4.39	4.54	4.69	4.84	4.99	5.14
Financiare	3.20	3.35	3.50	3.65	3.80	3.95	4.10	4.25	4.40	4.55	4.70	4.85	5.00	5.15	5.30
Administrative	3.36	3.51	3.66	3.81	3.96	4.11	4.26	4.41	4.56	4.71	4.86	5.01	5.16	5.31	5.46
Operacionale	3.52	3.67	3.82	3.97	4.12	4.27	4.42	4.57	4.72	4.87	5.02	5.17	5.32	5.47	5.62
Financiare	3.68	3.83	3.98	4.13	4.28	4.43	4.58	4.73	4.88	5.03	5.18	5.33	5.48	5.63	5.78
Administrative	3.84	3.99	4.14	4.29	4.44	4.59	4.74	4.89	5.04	5.19	5.34	5.49	5.64	5.79	5.94
Operacionale	4.00	4.15	4.30	4.45	4.60	4.75	4.90	5.05	5.20	5.35	5.50	5.65	5.80	5.95	6.10
Financiare	4.16	4.31	4.46	4.61	4.76	4.91	5.06	5.21	5.36	5.51	5.66	5.81	5.96	6.11	6.26
Administrative	4.32	4.47	4.62	4.77	4.92	5.07	5.22	5.37	5.52	5.67	5.82	5.97	6.12	6.27	6.42
Operacionale	4.48	4.63	4.78	4.93	5.08	5.23	5.38	5.53	5.68	5.83	5.98	6.13	6.28	6.43	6.58
Financiare	4.64	4.79	4.94	5.09	5.24	5.39	5.54	5.69	5.84	5.99	6.14	6.29	6.44	6.59	6.74
Administrative	4.80	4.95	5.10	5.25	5.40	5.55	5.70	5.85	6.00	6.15	6.30	6.45	6.60	6.75	6.90
Operacionale	4.96	5.11	5.26	5.41	5.56	5.71	5.86	6.01	6.16	6.31	6.46	6.61	6.76	6.91	7.06
Financiare	5.12	5.27	5.42	5.57	5.72	5.87	6.02	6.17	6.32	6.47	6.62	6.77	6.92	7.07	7.22
Administrative	5.28	5.43	5.58	5.73	5.88	6.03	6.18	6.33	6.48	6.63	6.78	6.93	7.08	7.23	7.38
Operacionale	5.44	5.59	5.74	5.89	6.04	6.19	6.34	6.49	6.64	6.79	6.94	7.09	7.24	7.39	7.54
Financiare	5.60	5.75	5.90	6.05	6.20	6.35	6.50	6.65	6.80	6.95	7.10	7.25	7.40	7.55	7.70
Administrative	5.76	5.91	6.06	6.21	6.36	6.51	6.66	6.81	6.96	7.11	7.26	7.41	7.56	7.71	7.86
Operacionale	5.92	6.07	6.22	6.37	6.52	6.67	6.82	6.97	7.12	7.27	7.42	7.57	7.72	7.87	8.02
Financiare	6.08	6.23	6.38	6.53	6.68	6.83	6.98	7.13	7.28	7.43	7.58	7.73	7.88	8.03	8.18
Administrative	6.24	6.39	6.54	6.69	6.84	6.99	7.14	7.29	7.44	7.59	7.74	7.89	8.04	8.19	8.34
Operacionale	6.40	6.55	6.70	6.85	7.00	7.15	7.30	7.45	7.60	7.75	7.90	8.05	8.20	8.35	8.50
Financiare	6.56	6.71	6.86	7.01	7.16	7.31	7.46	7.61	7.76	7.91	8.06	8.21	8.36	8.51	8.66
Administrative	6.72	6.87	7.02	7.17	7.32	7.47	7.62	7.77	7.92	8.07	8.22	8.37	8.52	8.67	8.82
Operacionale	6.88	7.03	7.18	7.33	7.48	7.63	7.78	7.93	8.08	8.23	8.38	8.53	8.68	8.83	8.98
Financiare	7.04	7.19	7.34	7.49	7.64	7.79	7.94	8.09	8.24	8.39	8.54	8.69	8.84	8.99	9.14
Administrative	7.20	7.35	7.50	7.65	7.80	7.95	8.10	8.25	8.40	8.55	8.70	8.85	9.00	9.15	9.30
Operacionale	7.36	7.51	7.66	7.81	7.96	8.11	8.26	8.41	8.56	8.71	8.86	9.01	9.16	9.31	9.46
Financiare	7.52	7.67	7.82	7.97	8.12	8.27	8.42	8.57	8.72	8.87	9.02	9.17	9.32	9.47	9.62
Administrative	7.68	7.83	7.98	8.13	8.28	8.43	8.58	8.73	8.88	9.03	9.18	9.33	9.48	9.63	9.78
Operacionale	7.84	7.99	8.14	8.29	8.44	8.59	8.74	8.89	9.04	9.19	9.34	9.49	9.64	9.79	9.94
Financiare	8.00	8.15	8.30	8.45	8.60	8.75	8.90	9.05	9.20	9.35	9.50	9.65	9.80	9.95	10.10
Administrative	8.16	8.31	8.46	8.61	8.76	8.91	9.06	9.21	9.36	9.51	9.66	9.81	9.96	10.11	10.26
Operacionale	8.32	8.47	8.62	8.77	8.92	9.07	9.22	9.37	9.52	9.67	9.82	9.97	10.12	10.27	10.42
Financiare	8.48	8.63	8.78	8.93	9.08	9.23	9.38	9.53	9.68	9.83	9.98	10.13	10.28	10.43	10.58
Administrative	8.64	8.79	8.94	9.09	9.24	9.39	9.54	9.69	9.84	9.99	10.14	10.29	10.44	10.59	10.74
Operacionale	8.80	8.95	9.10	9.25	9.40	9.55	9.70	9.85	10.00	10.15	10.30	10.45	10.60	10.75	10.90
Financiare	8.96	9.11	9.26	9.41	9.56	9.71	9.86	10.01	10.16	10.31	10.46	10.61	10.76	10.91	11.06
Administrative	9.12	9.27	9.42	9.57	9.72	9.87	10.02	10.17	10.32	10.47	10.62	10.77	10.92	11.07	11.22
Operacionale	9.28	9.43	9.58	9.73	9.88	10.03	10.18	10.33	10.48	10.63	10.78	10.93	11.08	11.23	11.38
Financiare	9.44	9.59	9.74	9.89	10.04	10.19	10.34	10.49	10.64	10.79	10.94	11.09	11.24	11.39	11.54
Administrative	9.60	9.75	9.90	10.05	10.20	10.35	10.50	10.65	10.80	10.95	11.10	11.25	11.40	11.55	11.70
Operacionale	9.76	9.91	10.06	10.21	10.36	10.51	10.66	10.81	10.96	11.11	11.26	11.41	11.56	11.71	11.86
Financiare	9.92	10.07	10.22	10.37	10.52	10.67	10.82	10.97	11.12	11.27	11.42	11.57	11.72	11.87	12.02
Administrative	10.08	10.23	10.38	10.53	10.68	10.83	10.98	11.13	11.28	11.43	11.58	11.73	11.88	12.03	12.18
Operacionale	10.24	10.39	10.54	10.69	10.84	10.99	11.14	11.29	11.44	11.59	11.74	11.89	12.04	12.19	12.34
Financiare	10.40	10.55	10.70	10.85	11.00	11.15	11.30	11.45	11.60	11.75	11.90	12.05	12.20	12.35	12.50
Administrative	10.56	10.71	10.86	11.01	11.16	11.31	11.46	11.61	11.76	11.91	12.06	12.21	12.36	12.51	12.66
Operacionale	10.72	10.87	11.02	11.17	11.32	11.47	11.62	11.77	11.92	12.07	12.22	12.37	12.52	12.67	12.82
Financiare	10.88	11.03	11.18	11.33	11.48	11.63	11.78	11.93	12.08	12.23	12.38	12.53	12.68	12.83	12.98
Administrative	11.04	11.19	11.34	11.49	11.64	11.79	11.94	12.09	12.24	12.39	12.54	12.69	12.84	12.99	13.14
Operacionale	11.20	11.35	11.50	11.65	11.80	11.95	12.10	12.25	12.40	12.55	12.70	12.85	13.00	13.15	13.30
Financiare	11.36	11.51	11.66	11.81	11.96	12.11	12.26	12.41	12.56	12.71	12.86	13.01	13.16	13.31	13.46
Administrative	11.52	11.67	11.82	11.97	12.12	12.27	12.42	12.57	12.72	12.87	13.02	13.17	13.32	13.47	13.62
Operacionale	11.68	11.83	11.98	12.13	12.28	12.43	12.58	12.73	12.88	13.03	13.18	13.33	13.48	13.63	13.78
Financiare	11.84	11.99	12.14	12.29	12.44	12.59	12.74	12.89	13.04	13.19	13.34	13.49	13.64	13.79	13.94
Administrative	12.00	12.15	12.30	12.45	12.60	12.75	12.90	13.05	13.20	13.35	13.50	13.65	13.80	13.95	14.10
Operacionale	12.16	12.31	12.46	12.61	12.76	12.91	13.06	13.21	13.36	13.51	13.66	13.81	13.96	14.11	14.26
Financiare	12.32	12.47	12.62	12.77	12.92	13.07	13.22	13.37	13.52	13.67	13.82	13.97	14.12	14.27	14.

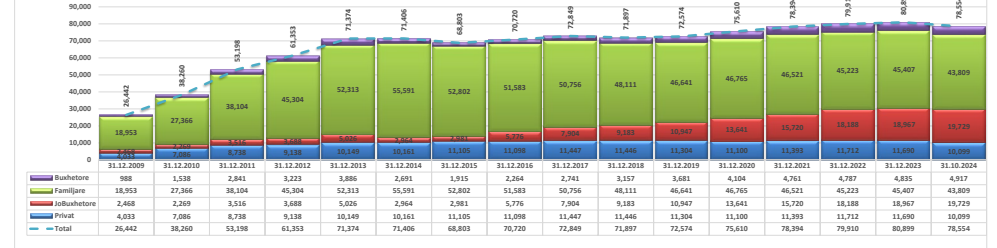
	31.12.2009	31.12.2010	31.12.2011	31.12.2012	31.12.2013	31.12.2014	31.12.2015	31.12.2016	31.12.2017	31.12.2018	31.12.2019	31.12.2020	31.12.2021	31.12.2022	31.10.2024
Buxhetore	988	1,538	2,841	3,223	3,886	2,691	1,915	2,264	3,517	3,081	4,084	4,767	4,446	4,835	4,917
Familjare	18,953	27,366	38,104	45,304	52,313	55,591	52,802	51,583	50,756	48,111	46,641	46,765	45,223	45,407	43,809
Jobuxhetore	2,468	2,269	3,516	3,688	5,026	2,964	2,981	5,776	7,904	9,183	10,947	13,641	15,720	18,188	19,729
Privat	4,033	7,086	8,738	9,138	10,149	10,161	11,105	11,098	11,447	11,446	11,304	11,100	11,393	11,712	10,099
Total	26,442	38,260	53,198	61,353	71,374	71,406	68,803	70,720	72,849	71,897	72,574	75,610	78,394	79,910	78,554

ECURIA E GIËNDËS DEBITORE NDAJ OPERATORIT TË SHPËRNDARJES  
31 DHJETOR 2009 - 30 SHTATOR 2024 SIPAS KLIËNTËVE  
(000 000 LËKË)



	31.12.2009	31.12.2010	31.12.2011	31.12.2012	31.12.2013	31.12.2014	31.12.2015	31.12.2016	31.12.2017	31.12.2018	31.12.2019	31.12.2020	31.12.2021	31.12.2022	31.12.2023	31.10.2024
Privat	4,033	7,086	8,738	9,138	10,149	10,161	11,105	11,098	11,447	11,446	11,304	11,100	11,393	11,712	10,099	
Jobuxhetore	2,468	2,269	3,516	3,688	5,026	2,964	2,981	5,776	7,904	9,183	10,947	13,641	15,720	18,188	19,729	
Familjare	18,953	27,366	38,104	45,304	52,313	55,591	52,802	51,583	50,756	48,111	46,641	46,765	45,223	45,407	43,809	
Buxhetore	988	1,538	2,841	3,223	3,886	2,691	1,915	2,264	3,517	3,081	4,084	4,767	4,446	4,835	4,917	
Total	26,442	38,260	53,198	61,353	71,374	71,406	68,803	70,720	72,849	71,897	72,574	75,610	78,394	79,910	78,554	

ECURIA E GIËNDËS DEBITORE NDAJ OPERATORIT TË SHPËRNDARJES  
31 DHJETOR 2009 - 30 SHTATOR 2024 SIPAS KLIËNTËVE  
(000 000 LËKË)



NIVELI I HUMBJEVE (%) 2009-2024												
	Janar	Shkurt	Mars	Prill	Maj	Qershor	Korrik	Gusht	Shtator	Tetor	Nentor	Dhjetor
2009	40.75	37.05	38.05	32.93	33.44	30.75	32.60	30.20	25.34	30.67	33.44	36.89
2010	38.62	35.41	36.90	31.37	35.17	31.45	26.94	29.69	21.47	20.61	22.16	29.05
2011	55.55	38.00	36.95	23.11	24.85	21.29	21.88	19.41	22.95	25.15	32.20	35.70
2012	35.72	59.16	55.23	45.41	38.87	39.77	45.51	45.51	42.09	35.53	41.89	49.32
2013	51.12	48.71	48.29	39.66	39.52	40.33	43.33	38.50	35.08	45.98	48.08	53.04
2014	47.00	42.14	42.78	35.69	36.85	34.10	36.59	36.36	31.67	34.52	32.88	37.54
2015	36.68	31.82	32.88	30.54	31.24	28.60	30.62	29.29	25.30	29.92	30.82	34.50
2016	34.69	29.00	29.93	26.07	26.97	24.35	25.97	25.15	22.12	27.11	29.30	30.99
2017	33.50	27.63	28.66	25.81	25.88	28.31	24.69	23.29	19.79	23.76	23.55	27.90
2018	30.65	24.91	27.22	23.33	23.03	20.76	21.46	20.77	19.32	21.53	22.73	26.70
2019	29.25	23.21	26.5	21.36	22.10	19.92	20.42	19.81	17.54	20.40	21.58	24.76
2020	28.22	21.61	28.36	17.39	19.10	18.65	19.69	18.87	16.80	21.21	22.79	20.49
2021	27.87	20.1	25.92	21.08	17.92	18.34	18.75	17.93	16.22	18.56	19.88	20.25
2022	28.42	19.66	23.68	18.24	17.08	17.30	18.42	16.81	14.94	18.36	18.38	19.76
2023	25.79	19.06	21.05	18.65	16.68	16.04	17.48	16.17	14.80	17.62	18.20	21.52
2024	21.28	16.80	19.38	16.67	15.94	16.06	17.64	15.11	14.05	17.77		

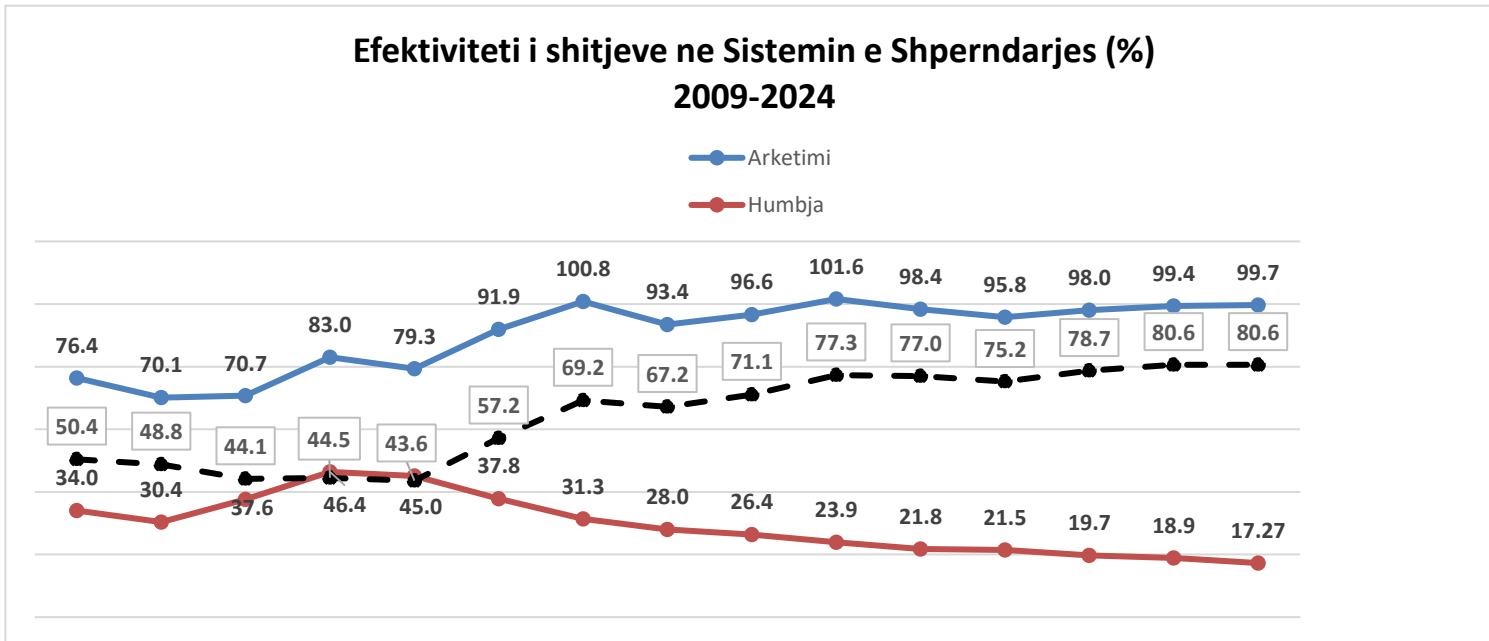
Niveli i Arketimeve (%) 2009-2024												
	Janar	Shkurt	Mars	Prill	Maj	Qershor	Korrik	Gusht	Shtator	Tetor	Nentor	Dhjetor
2009	69.32	85.95	74.38	86.58	86.31	76.37	75.40	72.46	83.20	80.82	61.77	70.01
2010	55.37	66.28	86.63	89.46	86.70	79.42	74.84	124.98	84.20	70.81	56.15	66.48
2011	67.26	57.61	87.66	71.61	96.73	73.00	65.00	81.00	66.00	63.86	51.47	87.30
2012	59.80	79.20	78.50	78.00	94.70	83.50	91.60	102.90	74.00	98.00	72.60	78.00
2013	61.40	63.70	86.20	80.70	79.10	69.60	87.90	90.10	78.50	84.30	89.00	102.00
2014	84.90	77.10	85.90	85.50	81.90	80.20	86.70	83.60	102.60	101.00	101.90	141.00
2015	112.70	120.50	103.70	86.60	95.70	97.10	98.40	104.70	95.30	100.30	92.20	100.70
2016	92.10	87.00	95.60	90.10	99.10	92.00	94.20	96.70	91.50	96.70	90.30	96.70
2017	85.20	87.60	105.70	94.50	105.70	91.80	104.80	97.40	94.60	103.80	92.70	100.10
2018	96.39	95.69	105.82	98.92	111.64	100.16	105.00	102.12	93.03	108.76	96.24	108.94
2019	90.7	92.6	99.8	102.4	102.50	94.00	104.40	99.30	93.90	104.70	89.60	110.70
2020	91.4	91.6	77.5	106.8	101.80	102.20	96.80	95.30	96.60	101.10	91.50	101.80
2021	86.4	88.9	102.1	91	101.20	110.70	96.90	94.10	90.70	114.70	96.90	101.50
2022	90.6	84.3	102.7	90.5	98.00	97.90	99.90	105.00	100.60	104.50	102.30	102.90
2023	92.3	94.2	100.2	92.9	113.7	95.70	93.60	101.60	101.20	113.80	103.80	96.70
2024	92	95	101.2	104.3	110.9	96.60	105.00	93.40	94.40	110.10		

Efektiviteti i shitjeve (%) 2009-2024												
	Janar	Shkurt	Mars	Prill	Maj	Qershor	Korrik	Gusht	Shtator	Tetor	Nentor	Dhjetor
2009	41.1%	46.8%	53.6%	57.9%	50.8%	52.2%	48.8%	50.6%	62.1%	56.0%	41.1%	44.2%
2010	34.0%	56.0%	56.4%	59.5%	51.5%	51.3%	91.3%	87.9%	66.1%	56.2%	43.7%	47.2%
2011	29.9%	54.3%	45.2%	74.4%	54.9%	51.2%	63.3%	65.3%	50.9%	47.8%	34.9%	56.1%
2012	38.4%	32.1%	34.9%	51.7%	51.0%	55.2%	56.1%	56.1%	42.9%	63.2%	42.2%	39.5%
2013	30.0%	44.2%	41.7%	47.7%	42.1%	52.4%	51.1%	55.4%	51.0%	45.5%	46.2%	47.9%



2014	45.0%	49.7%	48.9%	52.7%	50.6%	57.1%	53.0%	53.2%	70.1%	66.1%	68.4%	88.1%
2015	71.4%	69.6%	60.2%	65.8%	69.3%	68.3%	72.6%	74.0%	71.2%	70.3%	63.8%	66.0%
2016	60.2%	67.0%	66.6%	72.4%	69.6%	69.7%	71.6%	72.4%	71.3%	70.5%	63.8%	66.7%
2017	56.7%	75.4%	70.1%	78.3%	65.8%	78.9%	73.4%	74.7%	75.9%	79.1%	70.9%	72.2%
2018	66.8%	77.0%	75.8%	85.9%	79.4%	82.5%	80.2%	80.9%	75.1%	85.3%	74.4%	79.9%
2019	64.2%	73.4%	80.5%	79.8%	75.3%	83.1%	79.0%	79.6%	77.4%	83.3%	70.3%	83.3%
2020	65.6%	55.5%	88.2%	82.4%	83.1%	77.7%	76.5%	77.3%	80.4%	79.7%	70.6%	80.9%
2021	62.3%	75.6%	71.8%	83.1%	90.4%	78.7%	76.5%	77.2%	76.0%	93.4%	77.6%	80.9%
2022	64.9%	78.4%	74.0%	81.3%	81.0%	81.5%	85.7%	87.3%	85.6%	85.3%	83.5%	82.6%
2023	68.5%	76.2%	79.1%	75.6%	94.7%	80.3%	77.2%	85.2%	86.2%	93.7%	84.9%	75.9%
2024	72.4%	79.0%	81.6%	86.9%	93.2%	81.1%	86.5%	79.3%	81.1%	90.5%	0.0%	0.0%

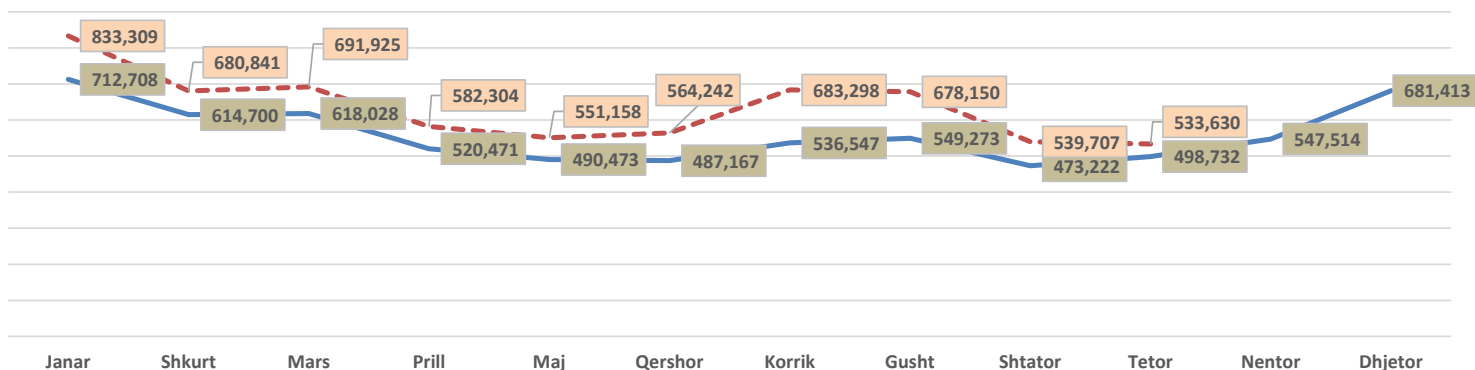
	2009	2010	2011	2012	2013	2014	2015	2016	2017	2018	2019	2020	2022	2023	2024
Arketimi	76.4	70.1	70.7	83.0	79.3	91.9	100.8	93.4	96.6	101.6	98.4	95.8	98.0	99.4	99.7
Humbja	34.0	30.4	37.6	46.4	45.0	37.8	31.3	28.0	26.4	23.9	21.8	21.5	19.7	18.9	17.27
Efektiviteti	50.4	48.8	44.1	44.5	43.6	57.2	69.2	67.2	71.1	77.3	77.0	75.2	78.7	80.6	80.6



	Janar	Shkurt	Mars	Prill	Maj	Qershorr	Korrik	Gusht	Shtator	Tetor	Nentor	Dhjetor	VITI
2009	644,987	568,719	589,279	462,709	448,118	427,694	467,863	493,772	439,604	489,635	557,554	639,797	6,229,731
2010	675,343	608,940	610,583	506,275	476,500	464,120	499,241	512,024	460,893	509,793	532,126	660,665	6,516,503
2011	708,264	623,208	634,087	536,286	533,564	495,139	545,315	567,282	512,979	551,132	619,655	710,870	7,037,781
2012	733,973	680,054	596,982	537,950	483,891	489,723	536,891	540,566	469,527	484,706	548,289	749,398	6,851,949
2013	743,846	665,392	673,578	545,600	502,945	511,390	546,696	565,789	493,056	532,555	589,808	774,403	7,145,060
2014	733,468	631,678	645,837	578,948	541,016	501,088	530,554	556,098	492,427	537,280	546,419	640,431	6,935,244
2015	686,041	591,978	594,775	514,282	472,405	465,730	536,160	529,208	459,012	476,969	519,281	649,026	6,494,867
2016	671,884	559,772	573,419	469,803	477,468	463,248	509,916	514,034	451,153	480,236	540,024	688,760	6,399,717
2017	715,886	562,270	545,214	493,731	475,055	485,386	529,805	543,145	451,103	482,629	546,256	667,841	6,498,322
2018	659,778	590,823	597,595	468,417	467,468	468,885	508,892	539,134	465,468	471,407	517,882	681,162	6,436,911
2019	735,813	586,992	559,331	500,485	501,061	500,729	533,842	565,788	471,684	472,833	507,920	639,953	6,576,432
2020	708,611	607,803	589,581	489,236	464,183	463,789	527,801	533,336	482,358	506,280	562,127	669,977	6,605,082
2021	724,554	629,962	662,183	590,810	504,970	519,563	591,485	603,872	485,288	523,606	552,840	747,790	7,136,936
2022	774,084	656,456	698,991	556,264	504,224	525,509	591,875	587,527	481,886	480,961	536,263	650,564	7,044,604
2023	774,084	656,456	698,991	556,264	504,224	525,509	591,875	587,527	481,886	480,961	536,263	650,564	7,044,604
2024	833,309	680,841	691,925	582,304	551,158	564,242	683,298	678,150	539,707	533,630			

	Janar	Shkurt	Mars	Prill	Maj	Qershorr	Korrik	Gusht	Shtator	Tetor	Nentor	Dhjetor
Mesatarja	712,708	614,700	618,028	520,471	490,473	487,167	536,547	549,273	473,222	498,732	547,514	681,413
2024	833,309	680,841	691,925	582,304	551,158	564,242	683,298	678,150	539,707	533,630		

### MESATARJA 14 VJEÇARE E ENERGJISË TOTALE NË RRJETIN E SHPËRNDARJES SIPAS MUAJVE TË VITIT (MWh) KRAHASUAR ME VITIN 2024



## Alokimi i Kapaciteteve në interkoniksion 2024

Ankandi	Periudha	Shqiperi - Mali Zi						Shqiperi - Greqi						Shqiperi - Kosove							
		ATC e ofruar ne Ankand		ATC e shitur ne Ankand		Cmimi Ankandit		ATC e ofruar ne Ankand		ATC e shitur ne Ankand		Cmimi Ankandit		ATC e ofruar ne Ankand		ATC e shitur ne Ankand		Cmimi Ankandit			
		Export	Import	Export	Import	Export	Import	Export	Import	Export	Import	Export	Import	Export	Import	Export	Import	Export	Import	Export	Import
		[ MW ]	[ MW ]	[ MW ]	[ MW ]	[ Euro/MWh ]	[ Euro/MWh ]	[ MW ]	[ MW ]	[ MW ]	[ MW ]	[ Euro/MWh ]	[ Euro/MWh ]	[ MW ]	[ MW ]	[ MW ]	[ MW ]	[ Euro/MWh ]	[ Euro/MWh ]	[ Euro/MWh ]	[ Euro/MWh ]
Janar	01.01.2024-31.01.2024	100	100	100	100	2.21	0.94	200	100	200	100	3.5	1	200	200	200	200	0.70	0.35		
Shkurt	01.02.2024-29.02.2024	100	100	100	100	0.92	0.6	200	100	200	99	2.46	0.53	200	200	200	200	0.37	0.17		
Mars	01.03.2024-31.03.2024	100	100	100	100	1.01	0.51	200	150	200	150	3.99	0.35	150	150	149	150	0.51	0.38		
Prill	01.04.2024-30.04.2024	100	100	100	100	1.81	0.86	200	200	200	200	2.88	0.44	150	150	150	150	0.47	0.23		
Maj	01.05.2024-31.05.2024	100	100	100	100	2.37	0.86	50	50	50	50	4.07	1.88	0	40	0	40	0	0.33		
Qershor	01.06.2024-30.06.2024	50	50	50	50	3.99	1	50	50	50	50	4.61	1.54	0	0	0	0	0	0		
Korrik	01.07.2024-31.07.2024	0	0	0	0	0	0	50	50	50	50	3.2	1.65	0	0	0	0	0	0		
Gusht	01.08.2024-31.08.2024	0	0	0	0	0	0	50	50	50	50	3.74	4.5	0	0	0	0	0	0		
Shtator	01.09.2024-30.09.2024	0	0	0	0	0	0	250	250	249	250	1.56	3.85	0	0	0	0	0	0		
Tetor	01.10.2024-31.10.2024	0	0	0	0	0	0	250	250	250	250	2.45	2.51	0	0	0	0	0	0		

Burimi: OST sha

Disbalancat mujore [MWh] 2024 (10-MUJORI)

Pale Pergjegjese Balancuse	JANAR		SHKURT		MARS		PRILL		MAJ		QERSHOR		KORRIK		GUSHT		SHTATOR		TETOR		TOTALI 2024		
	Dis. Negative [MWh]	Dis. Positive [MWh]	Dis. Negative [MWh]	Dis. Positive [MWh]	Dis. Negative [MWh]	Dis. Positive [MWh]	Dis. Negative [MWh]	Dis. Positive [MWh]	Dis. Negative [MWh]	Dis. Positive [MWh]	Dis. Negative [MWh]	Dis. Positive [MWh]	Dis. Negative [MWh]	Dis. Positive [MWh]	Dis. Negative [MWh]	Dis. Positive [MWh]	Dis. Negative [MWh]	Dis. Positive [MWh]	Dis. Negative [MWh]	Dis. Positive [MWh]	Dis. Negative [MWh]	Dis. Positive [MWh]	
ALB Energy Trade																							
AlB&T Trading							5	57	57	137	97	173	85	140	59	119	111	154	133	116	548	896	
AYEN AS ENERGI sha	67	111	159	48	139	91	97	151	80	242	150	34	106	17	104	14	136	219	192	186	1,232	1,114	
Danske Commodities ne prog	14	70	4	2	13	14	7	7	9	30	9	8	11	10	17	19	12	10	34	11	129	180	
DEVOLL HYDROPOWER sha	230	69	193	49	65	42	139	47	160	33	45	28	33	27	55	23	50	37	20	39	989	394	
Devoll Hydropower ne prog															540						540	0	
DRAGODIA ENERGY sha	3	100	6	97	21	353	22	181	44	145	34	47	10	50	0	5	10	88	29	77	180	1,144	
DRAGODIA ENERGY sha ne prog																						0	
ENER TRADE shpk	1,144	303	1,003	217	266	288	780	457	729	268	907	439	509	441	642	450	241	334	761	460	6,982	3,656	
EZ-S ENERGY shpk (DURRES)	186	145	192	187	405	212	569	176	520	209	857	90	812	221	455	157	612	272	464	160	5,077	1,829	
FUTURE ENERGY	999	197	774	72	687	222	857	328	1,317	359	2,270	211	1,087	559	658	314	1,507	195	916	141	11,072	2,598	
FUTURE ENERGY ne prog	6	0													2							8	
Furnituesi i Tregut t6 Lire FTL (OSHEE Grup)	6,223	30,230	2,902	22,413	6,805	21,127	6,158	16,905	3,286	16,476	5,851	16,406	3,929	16,505	4,471	15,180	5,327	16,979	4,281	12,965	49,235	185,187	
GEN-I																					201	324	
GEN-I ne prog	1	1																					
GSA shpk	1,003	668	325	255	821	370	1,004	2,342	3,756	183	2,914	564	3,325	92	2,343	106	2,539	106	4,403	267	22,433	4,954	
KESH (Pale Pergjegjese Balancuse)	2,355	3,267	2,030	3,256	1,992	6,106	1,478	9,304	4,272	10,313	3,043	5,995	3,519	959	3,046	1,440	2,093	6,817	2,547	3,513	26,375	50,972	
KURUM INTERNATIONAL sha	700	21	288	158	1,140	585	1,521	591	1,583	310	1,472	557	1,218	563	734	25	182	64	188	111	9,026	3,983	
NOA																							
OST - HUMBLET	2,156	1,281	838	2,864	3,032	1,806	4,112	964	1,929	1,726	2,390	740	5,380	466	7,225	31	4,078	654	2,137	1,454	33,276	11,985	
KOST	2,818	10,778	2,952	8,510	5,442	7,496																	
Renery ne program					0	2	0	1															
SPV Blue 1									326	558	975	1,249	483	626	653	841	1,014	1,737	947	1,035	4,399	6,045	
SGX Energy																		21	117	119	137	140	
Ofrusi i Sherbimit te Balancimit	Rritje Gjenerimi [MWh]	Ujje Gjenerimi [MWh]	Rritje Gjenerimi [MWh]	Ujje Gjenerimi [MWh]	Rritje Gjenerimi [MWh]	Ujje Gjenerimi [MWh]	Rritje Gjenerimi [MWh]	Ujje Gjenerimi [MWh]	Rritje Gjenerimi [MWh]	Ujje Gjenerimi [MWh]	Rritje Gjenerimi [MWh]	Ujje Gjenerimi [MWh]	Rritje Gjenerimi [MWh]	Ujje Gjenerimi [MWh]	Rritje Gjenerimi [MWh]	Ujje Gjenerimi [MWh]	Rritje Gjenerimi [MWh]	Ujje Gjenerimi [MWh]	Rritje Gjenerimi [MWh]	Ujje Gjenerimi [MWh]	Rritje Gjenerimi [MWh]	Ujje Gjenerimi [MWh]	
Devoll HP Energjia Akt	468		972		1,973				2,480		698		243		378		535			167		7,912	
Devoll HP Energjia Shtese Akt							1,804															1,804	
KURUM INTERNATIONAL Energjia Akt																						0	
Ayen AS Energji Energjia Akt																						0	
Ayen AS Energji Energjia Shtese Akt																						0	
KESH sha. Energjia Akt	13,047	2,089	10,855	1,819	6,168	3,499	5,984	2,015	7,401	4,657	6,405	6,543	7,566	6,512	7,742	6,049	7,130	4,370	6,803	5,813	79,099	43,367	
KESH sha. Energjia Shtese Akt	10,986	2,871	13,553	1,316	11,527	2,835	6,399	3,082	8,959	1,151	6,823	5,559	5,372	6,232	5,252	4,509	6,026	3,414	2,382	3,108	77,278	34,076	
	42,408	52,201	37,045	41,262	40,500	45,049	31,267	36,685	37,163	36,892	35,321	38,679	34,081	33,472	34,880	29,627	32,262	36,591	27,437	30,400	352,363	380,858	
Disbalancat mujore [MWh]		9,793		4,217		4,549		5,418		-271		3,358		-609		-5,253	#####			2,963		28,495	

Burimi: OST sha

KLIENDET NE TL	KLIENDET E "KUALIFIKUAR" PER VITIN 2024										
	Energjia e faturuar ne [MWh]										
	Janar	Shkurt	Mars	Prill	Maj	Qershor	Korrik	Gusht	Shtator	Tetor	2024
EL220-L220KURUM/337	4,874	4,501	23,996	24,673	23,275	25,737	24,397	1,319	279	291	133,343
F.ARRES-T3/653	0	-	-	1,465	1,528	1,473	1,478	1,648	1,439	1,485	10,516
Titan T1,T2	9,588	9,037	4,561	8,997	10,364	10,143	10,428	7,767	3,685	10,731	85,301
FUSHE KRUJE 220kV-T2/058	5,383	707	2,988	9,172	10,809	9,629	5,599	4,064	6,818	11,771	66,941
N/ST 220/6,3Colacent-T1/336	145.3	1,023	1,734	1,746	2,181	593	1,492	1,131	1,231	1,442	12,719
N/ST i GSA EL 110kV-T1/694	8,956	8,466	8,959	2,772	162	161	7,282	8,432	8,298	8,888	62,376
N/ST i GSA EL 110kV-T2/960	-	-	-	-	-	-	-	-	-	-	-
N/ST I CWI Albania T1/148	466	395	531	417	572	557	562	396	519	599	5,014
N/ST i AES EL 110kV-T1/690	159	22	-	2,414	7,298	7,073	7,277	7,122	2,268	-	33,632
N/ST I AES EL 110kV-T2/692	-	118	147	60	2	-	-	-	4,723	7,033	12,083
HEC Moglice T1,T2,T3	1.4	1	1	1	1	7	1	-	1	0	14
HEC Peshqesh-T1/633	0.9	9	5	5	6	25	38	38	23	12	162
Nova Solar							4	27	31	40	102
y Blue I T1/139	-	-	-	-	4	14	19	21	23	26	107
Lajthiza T1/742	14.4	22	17	27	21	228	440	619	459	282	2,130
HEC Ashta1-T1,HEC Ashta2-T1,	-	-	0.11	-	-	0.19	-	-	-	-	0
HEC Banje T1,T2	10.8	12	20	19	19	21	15	15	21	20	173
HEC Fang-T1,T2.	1.300	35	48	25	22	23	45	44	35	27	305
Gjenerim KURUM	1.296	5	16	9	10	19	18	17	23	19	136
FERRO KROM-F1,F2,F3,F4	6,953	6,896	7,392	7,013	7,223	6,789	6,634	56	54	55	49,065
<b>TOTAL</b>	<b>36,554</b>	<b>31,249</b>	<b>50,416</b>	<b>58,815</b>	<b>63,497</b>	<b>62,491</b>	<b>65,729</b>	<b>32,716</b>	<b>29,930</b>	<b>42,721</b>	<b>474,118</b>

*Burimi: OST sha*

## Devijimet nga programi interkoneksionit 2024 (10-mujori)

Minus = Hyrje		Plus = Dalje									2024
Data	Janar	Shkurt	Mars	Prill	Maj	Qershor	Korrik	Gusht	Shtator	Tetor	
1	411	-16	394	394	55	111	-112	88	88	81	1,494
2	462	144	428	428	257	2	-97	228	52	-28	1,876
3	-120	293	139	139	850	-41	481	219	-19	-391	1,550
4	545	378	-250	-117	429	373	54	71	106	35	1,624
5	375	411	233	363	962	207	142	151	123	1297	4,264
6	309	49	43	326	18	186	-53	70	-69	844	1,723
7	739	185	51	592	-73	-83	102	39	110	330	1,992
8	207	-237	24	468	15	-182	-102	-3	-5	-146	39
9	121	354	-267	-9	136	-411	-172	-47	120	-74	-249
10	-5	46	401	605	163	-209	-209	68	6	222	1,088
11	311	395	126	532	130	4	42	-78	37	-180	1,319
12	183	910	287	242	-922	49	-49	-179	-54	312	779
13	-117	217	364	-132	1159	-129	110	-272	306	99	1,605
14	61	-41	162	352	50	423	241	-128	734	-84	1,770
15	65	128	15	131	41	101	-40	-34	62	-38	431
16	1299	-59	13	-177	-30	308	24	-135	1757	-307	2,693
17	439	-168	0	99	162	-326	-155	16	686	101	854
18	1474	-12	106	101	127	-232	-59	200	1039	-664	2,080
19	1294	-47	-261	-515	416	-140	226	227	366	-94	1,472
20	652	-115	-173	-92	154	-147	214	427	825	55	1,800
21	463	70	77	-444	88	1077	541	195	595	261	2,923
22	148	228	118	542	239	400	148	-385	718	-123	2,033
23	-388	-73	365	129	370	217	44	-63	355	-8	948
24	-2	-306	-5	1195	-301	79	272	1	196	660	1,789
25	154	383	165	1387	385	254	291	123	183	155	3,480
26	265	649	-248	865	764	264	309	-43	189	98	3,112
27	67	23	574	639	207	556	357	376	177	-220	2,756
28	282	174	930	414	368	499	189	-143	-288	-130	2,295
29	110	255	-432	298	332	410	60	198	692	35	1,958
30	-4		-135	670	110	175	102	293	101	-176	1,136
31	-61		153		116		238	166		201	813
<b>Total</b>	<b>9,739</b>	<b>4,218</b>	<b>3,397</b>	<b>9,425</b>	<b>6,778</b>	<b>3,795</b>	<b>3012</b>	<b>1643</b>	<b>9188</b>	<b>2124</b>	<b>53,319</b>

Burimi: OST sha

Transaksionet e energjië elektrike të Pjestarëve të Tregut në [MWh] për 2024

Nr.	Subjekti	Lloji transaksionit	Janar	Shkurt	Mars	Prill	Maj	Qershor	Korrik	Gusht	Shtator	Tetor	Total [MWh]		
1	DEVOLLI HP	Shkëmbime Cross-Border	AL-GR Greece - IN	-5,269	-7,436	-12,447	-26,790	-14,225	-16,440	-7,417	-11,310	-15,484	-22,370	-141,005	
			AL-KS Kosovo - IN	0	0	0	0	0	0	0	0	0	0	0	0
			AL-ME Montë Negro - IN	-3,853	-2,631	-3,046	-2,299	-2,133	-4,973	-2,553	-871	-1,337	-1,125	-1,125	-24,821
			<b>Total IN</b>	<b>-9,122</b>	<b>-10,067</b>	<b>-15,493</b>	<b>-29,089</b>	<b>-16,358</b>	<b>-21,413</b>	<b>-9,970</b>	<b>-14,001</b>	<b>-16,821</b>	<b>-23,495</b>	<b>-16,529</b>	<b>-165,829</b>
			AL-GR Greece - OUT	25,971	23,154	30,424	11,364	8,177	11,519	7,599	8,576	7,661	11,392	14,803	148,803
		AL-KS Kosovo - OUT	0	0	0	0	0	0	0	0	0	0	0	0	
		AL-ME Montë Negro - OUT	64,338	47,573	49,103	60,678	58,059	36,350	19,428	22,471	29,874	31,629	31,629	419,493	
		<b>Total OUT</b>	<b>90,365</b>	<b>70,727</b>	<b>79,527</b>	<b>72,042</b>	<b>66,236</b>	<b>47,869</b>	<b>27,028</b>	<b>31,047</b>	<b>37,535</b>	<b>43,020</b>	<b>43,020</b>	<b>565,296</b>	
		<b>Prodhim Devoll HP</b>	<b>81,143</b>	<b>60,660</b>	<b>64,034</b>	<b>42,953</b>	<b>49,967</b>	<b>27,187</b>	<b>17,658</b>	<b>17,046</b>	<b>23,545</b>	<b>19,525</b>	<b>19,525</b>	<b>403,058</b>	
		<b>Total Prodhim</b>	<b>81,143</b>	<b>60,660</b>	<b>64,034</b>										<b>403,058</b>
2	AVEN Energy Trading	Shkëmbime Cross-Border	AL-GR Greece - IN	-2,424	-2,424	-5,347	-1,409	-2,993	-228	-5,522	-1,896	-6,452	-6,779	-33,050	
			AL-KS Kosovo - IN	-1,299	0	-1,276	-26,300	-10,936	-8,408	-377	-28	-2,227	-11,528	-23,862	
			AL-ME Montë Negro - IN	0	0	-618	-5,873	-3,665	-801	-2,838	-3,570	-376	-4,275	-3,329	-23,285
			<b>Total IN</b>	<b>-1,299</b>	<b>-3,042</b>	<b>-23,981</b>	<b>-29,314</b>	<b>-14,730</b>	<b>-11,474</b>	<b>-9,469</b>	<b>-2,298</b>	<b>-11,953</b>	<b>-21,656</b>	<b>-13,017</b>	<b>-130,197</b>
			AL-GR Greece - OUT	1,005	0	0	0	7,635	9,775	1,729	3,323	5,807	9,021	38,204	38,204
		AL-KS Kosovo - OUT	0	966	240	0	0	0	0	0	0	2,928	1,011	5,145	
		AL-ME Montë Negro - OUT	-200	-5	0	297	396	75	42	0	0	570	762	2,291	
		<b>Total OUT</b>	<b>1,205</b>	<b>971</b>	<b>240</b>	<b>297</b>	<b>8,031</b>	<b>9,850</b>	<b>1,771</b>	<b>3,323</b>	<b>5,807</b>	<b>9,300</b>	<b>10,754</b>	<b>45,640</b>	
		<b>Total</b>	<b>-1,134</b>	<b>-10,332</b>	<b>-17,178</b>	<b>-18,164</b>	<b>-11,212</b>	<b>-197</b>	<b>-186,79</b>	<b>-3,370,44</b>	<b>-3,438,15</b>	<b>-6,430</b>	<b>-17,012</b>	<b>-13,611</b>	<b>-18,994</b>
		3	AVEN AS Energië	Shkëmbime Cross-Border	AL-GR Greece - IN	0	0	0	0	0	0	0	0	0	0
AL-KS Kosovo - IN	-274				-1,795	-210	-3,172	-2,245	-862	-34	-8	0	-313	-8,913	
AL-ME Montë Negro - IN	-518				-698	-1,669	-459	-118	-274	-174	-26	-69	-3,123	-7,128	
<b>Total IN</b>	<b>-792</b>				<b>-2,493</b>	<b>-1,879</b>	<b>-3,631</b>	<b>-2,363</b>	<b>-1,136</b>	<b>-208</b>	<b>-34</b>	<b>-69</b>	<b>-4,346</b>	<b>-16,041</b>	
AL-GR Greece - OUT	25,002				11,364	9,211	22,354	2,511	0	0	0	0	0	0	68,442
AL-KS Kosovo - OUT	19,356			9,891	3,129	5,110	279	0	2,675	2,782	1,160	31	6,403	31	
AL-ME Montë Negro - OUT	9,966			3,300	1,735	2,817	2,020	0	873	551	826	1,470	23,558	15,613	
<b>Total OUT</b>	<b>54,324</b>			<b>24,555</b>	<b>14,075</b>	<b>30,281</b>	<b>4,810</b>	<b>0</b>	<b>3,548</b>	<b>2,833</b>	<b>1,986</b>	<b>1,901</b>	<b>25,261</b>	<b>25,261</b>	
<b>Total</b>	<b>53,532</b>			<b>22,062</b>	<b>12,196</b>	<b>26,650</b>	<b>2,447</b>	<b>0</b>	<b>2,340</b>	<b>2,466</b>	<b>1,817</b>	<b>1,837</b>	<b>17,915</b>	<b>9,220</b>	<b>50,451</b>
4	ENERGJI ASHTA			Shkëmbime Cross-Border	AL-GR Greece - IN	0	0	0	0	0	0	0	0	0	0
		AL-KS Kosovo - IN	0		0	0	0	0	0	0	0	0	0	0	0
		AL-ME Montë Negro - IN	0		0	0	0	0	0	0	0	0	0	0	0
		<b>Total IN</b>	<b>0</b>		<b>0</b>	<b>0</b>	<b>0</b>	<b>0</b>	<b>0</b>	<b>0</b>	<b>0</b>	<b>0</b>	<b>0</b>	<b>0</b>	<b>0</b>
		AL-GR Greece - OUT	0		0	0	0	0	0	0	0	0	0	0	0
		AL-KS Kosovo - OUT	0	0	0	0	0	0	0	0	0	0	0	0	
		AL-ME Montë Negro - OUT	0	0	0	0	0	0	0	0	0	0	0	0	
		<b>Total OUT</b>	<b>0</b>	<b>0</b>	<b>0</b>	<b>0</b>	<b>0</b>	<b>0</b>	<b>0</b>	<b>0</b>	<b>0</b>	<b>0</b>	<b>0</b>	<b>0</b>	
		<b>Total</b>	<b>0</b>	<b>0</b>	<b>0</b>	<b>0</b>	<b>0</b>	<b>0</b>	<b>0</b>	<b>0</b>	<b>0</b>	<b>0</b>	<b>0</b>	<b>0</b>	
		5	GEN-I	Shkëmbime Cross-Border	AL-GR Greece - IN	-6,629	-7,480	-6,814	-14,319	-6,604	-7,616	-10,839	-1,824	-13,956	-15,014
AL-KS Kosovo - IN	-8,008				-4,725	-3,977	-4,947	-1,968	-114	-189	-15	-15	-186	-24,104	
AL-ME Montë Negro - IN	-55,755				-57,790	-34,511	-11,207	-16,043	-20,207	-8,733	-10,176	-14,992	-6,770	-19,224	
<b>Total IN</b>	<b>-69,392</b>				<b>-70,995</b>	<b>-45,302</b>	<b>-26,433</b>	<b>-14,615</b>	<b>-25,028</b>	<b>-9,932</b>	<b>-25,116</b>	<b>-29,983</b>	<b>-20,970</b>	<b>-33,538</b>	
AL-GR Greece - OUT	32,894				41,212	36,865	15,031	25,557	12,805	5,643	6,562	7,865	1,604	189,443	
AL-KS Kosovo - OUT	9,197			556	2,017	4,210	7,521	1,110	3,558	366	814	281	48,249		
AL-ME Montë Negro - OUT	6,748			6,219	6,438	18,038	9,443	4,314	2,767	6,269	6,899	12,203	79,343		
<b>Total OUT</b>	<b>48,839</b>			<b>47,987</b>	<b>45,320</b>	<b>37,279</b>	<b>39,521</b>	<b>18,229</b>	<b>11,968</b>	<b>16,501</b>	<b>22,899</b>	<b>20,993</b>	<b>308,635</b>		
<b>Total</b>	<b>-20,553</b>			<b>-23,008</b>	<b>-10,982</b>	<b>-9,154</b>	<b>-5,094</b>	<b>-6,803</b>	<b>-7,964</b>	<b>-8,615</b>	<b>-12,084</b>	<b>-9,977</b>	<b>-12,945</b>	<b>-77,562</b>	
6	GSA			Shkëmbime Cross-Border	AL-GR Greece - IN	-1,593	-6,393	-7,587	-7,496	-1,959	-1,989	-11,082	-11,872	-14,098	-5,198
		AL-KS Kosovo - IN	-16,313		-10,819	-14,252	-19,977	-8,677	-9,828	-9,929	-10,880	-8,101	-14,399	-12,275	
		AL-ME Montë Negro - IN	0		0	0	-329	-1,189	-1,640	-4,058	-2,235	-4,493	-8,310	-2,254	
		<b>Total IN</b>	<b>-17,906</b>		<b>-17,212</b>	<b>-22,839</b>	<b>-27,802</b>	<b>-11,825</b>	<b>-13,457</b>	<b>-25,069</b>	<b>-24,194</b>	<b>-26,692</b>	<b>-27,907</b>	<b>-21,903</b>	
		AL-GR Greece - OUT	3,137		1,671	2,526	1,640	3,211	2,696	1,453	568	90	1,876	18,870	
		AL-KS Kosovo - OUT	12,114	5,609	28,376	11,381	4,773	114	402	300	421	341	177		
		AL-ME Montë Negro - OUT	20	-62	2,086	3,015	2,552	353	1,186	932	28	394	16,628		
		<b>Total OUT</b>	<b>15,271</b>	<b>7,018</b>	<b>31,988</b>	<b>16,404</b>	<b>8,537</b>	<b>1,611</b>	<b>2,240</b>	<b>1,760</b>	<b>749</b>	<b>2,611</b>	<b>35,876</b>		
		<b>Total</b>	<b>-2,635</b>	<b>-10,194</b>	<b>-10,851</b>	<b>-11,398</b>	<b>-3,308</b>	<b>-11,846</b>	<b>-22,829</b>	<b>-22,434</b>	<b>-26,943</b>	<b>-24,086</b>	<b>-11,027</b>	<b>-36,027</b>	
		7	DANSKE COMMODITIES	Shkëmbime Cross-Border	AL-GR Greece - IN	-58,073	0	0	-50	-60	-5,352	-4,918	-5,622	-11,862	-5,480
AL-KS Kosovo - IN	-971				0	0	-1,489	-4,597	-17,324	-20,935	-17,934	-283	-3,778	-67,311	
AL-ME Montë Negro - IN	-10,628				-687	-1,460	-1,383	-60	-682	0	-1,575	-456	-1,250	-18,181	
<b>Total IN</b>	<b>-69,672</b>				<b>-687</b>	<b>-1,460</b>	<b>-2,922</b>	<b>-4,717</b>	<b>-23,588</b>	<b>-28,853</b>	<b>-23,334</b>	<b>-12,401</b>	<b>-16,508</b>	<b>-174,912</b>	
AL-GR Greece - OUT	23,627				26,523	19,868	29,366	24,445	15,290	12,444	14,744	6,221	13,604	20,499	
AL-KS Kosovo - OUT	98,533			7,046	19,916	22,086	26,552	12,860	15,964	7,457	5,555	15,521	226,490		
AL-ME Montë Negro - OUT	1,078			9,867	8,047	-1,177	-6,677	670	583	0	7,387	1,019	39,507		
<b>Total OUT</b>	<b>123,238</b>			<b>43,447</b>	<b>49,831</b>	<b>55,629</b>	<b>59,674</b>	<b>28,819</b>	<b>28,993</b>	<b>21,801</b>	<b>21,170</b>	<b>35,144</b>	<b>467,746</b>		
<b>Total</b>	<b>53,566</b>			<b>42,760</b>	<b>48,371</b>	<b>52,707</b>	<b>54,957</b>	<b>15,271</b>	<b>11,135</b>	<b>-1,533</b>	<b>8,769</b>	<b>18,636</b>	<b>25,117</b>	<b>372,834</b>	









PROCEDURAT E SHITJE-BLERIES SË ENERGJISË ELEKTRIKE NGA KESH NË TREG TË LIBERALIZUAR

Shitje ne kushtet e prarives te medha						
Maj 2024	Shoqëritë	Shitje		Vlera	TVSH	Vlera me TVSH
		Sasia (MWh)	EUR/MWh			
	AlbEsp Trading & Consulting sh.p.k.	3,500	52.68	184,367.40	36,873.48	221,240.88
	Danske Commodities Albania sh.p.k.	13,150	48.02	631,895.60	126,379.12	758,274.72
	Emer Trade sh.p.k.	39,029	57.77	2,254,859.60	450,971.90	2,705,831.50
	Fuente Dynamics Tirane	1,580	57.43	90,740.00	18,148.00	108,888.00
	GEN-I Tirana sh.p.k.	12,680	73.15	927,600.00	185,520.00	1,113,120.48
	GSA shpk	1,400	81.20	113,680.00	22,736.00	136,416.00
	Infrint Power Solution sh.p.k.	4,200	52.45	219,300.00	43,860.00	263,160.00
	NOA Energy Trade sh.p.k.	7,800	71.32	556,360.00	111,272.00	667,632.00
	<b>Totali</b>	<b>79,569</b>	<b>60.49</b>	<b>4,781,305.40</b>	<b>956,261.08</b>	<b>5,737,566.48</b>

Shit-berje e energjise elektrike per optimizim financiar te shoqerise KESH sh.a. me procedura bazuar ne rregulloren e Tregutit							
Shoqëria	Perioda	Statusi	Sasia		Vlera	TVSH	Vlera me TVSH
			MWh	Euro/MWh			
Janar	01-31.01.2024	Shitje	-	-	-	-	-
		Blerje	-	-	-	-	-
Shkurt	01-29.02.2024	Shitje	-	-	-	-	-
		Blerje	-	-	-	-	-
Mars	01-31.03.2024	Shitje	6,400.00	71.28	441,318.80	86,021.84	527,340.64
		Blerje	8,064.00	46.68	376,409.68	46,603.22	423,012.90
Prill	01-30.04.2024	Shitje	29,890.00	77.22	2,308,173.00	461,634.60	2,769,807.60
		Blerje	28,206.00	43.49	1,226,605.92	245,321.18	1,471,927.10
Maj	01-31.05.2024	Shitje	10,000.00	74.95	749,495.00	79,899.00	829,394.00
		Blerje	10,080.00	50.06	504,582.54	95,495.82	600,078.36
Qershor	01-30.06.2024	Shitje	-	-	-	-	-
		Blerje	-	-	-	-	-
Korrik	01-31.07.2024	Shitje	400.00	222.20	88,880.00	17,776.00	106,656.00
		Blerje	100.00	116.00	11,600.00	-	11,600.00
Gusht	01-31.08.2024	Shitje	-	-	-	-	-
		Blerje	-	-	-	-	-
Shtator	01-30.09.2024	Shitje	1,948.00	164.39	320,226.24	64,045.25	384,271.49
		Blerje	1,948.00	157.30	306,420.40	61,284.08	367,704.48
Tetor	01-31.10.2024	Shitje	2,160.00	126.10	348,681.60	69,736.32	418,417.92
		Blerje	2,160.00	126.10	348,681.60	69,736.32	418,417.92
Nentor	01-30.11.2024	Shitje	-	-	-	-	-
		Blerje	-	-	-	-	-
Dhjetor	01-31.12.2024	Shitje	-	-	-	-	-
		Blerje	-	-	-	-	-
<b>TOTALI</b>	<b>Janar- Dhjetor</b>	<b>Shitje</b>	<b>50,798.00</b>	<b>83.80</b>	<b>4,256,774.64</b>	<b>779,113.01</b>	<b>5,035,887.65</b>
		<b>Blerje</b>	<b>50,558.00</b>	<b>53.36</b>	<b>2,697,994.54</b>	<b>503,179.50</b>	<b>3,201,174.04</b>

Mars 2024	Shoqëritë	Blerje		Vlera	TVSH	Vlera me TVSH
		Sasia (MWh)	EUR/MWh			
	NOA Energy Trade sh.p.k.	400	53.1	21,244	4,248.8	25,492.8
	GEN-I Tirana sh.p.k.	1840	45.2	83,176	16,635.2	99,811.2
	Emer Trade sh.p.k.	112	42.9	4,803.56	960.712	5,764.272
	Danske Commodities Albania sh.p.k.	2008	48.1	96,655.52	19,331.10	115,986.624
	Aven Energy Trading sh.a.	88	54.4	4,782.8	956.56	5,739.36
	Fuente Dynamics sh.p.k./Kosovo	160	42.8	6,840.8	1,368.16	8,209.0
	Emer Trade sh.p.k.	400	49.1	19,640	3,928	23,568
	AlbEsp Trading&Consulting	160	39.5	6,315.2	1,263.04	7,578.24
	Aspo d.o.o Bosgrad	432	54.8	23,652	4,730.4	28,382.4
	HSE d.o.o	2464	45.8	112,900.8	22,580.16	135,480.96
	<b>Totali</b>	<b>8064</b>	<b>46.68</b>	<b>376,093.68</b>	<b>46,603.22</b>	<b>422,696.90</b>

Prill 2024	Shoqëritë	Blerje		Vlera	TVSH	Vlera me TVSH
		Sasia (MWh)	EUR/MWh			
	AlbEsp Trading & Consulting sh.p.k.	1212	38.6	46,782.32	9,356.46	56,138.78
	Danske Commodities Albania sh.p.k.	900	45.2	40,780	8,156.0	48,936.0
	Emer Trade sh.p.k.	6040	51.8	312,764	62,552.8	375,316.8
	Fuente Dynamics	300	41.5	12,444	2,488.8	14,932.8
	Fuente Dynamics Tirane	210	36.8	7,717.8	1,543.50	9,261.30
	GEN-I Tirana sh.p.k.	2814	39.6	111,552	22,310.40	133,862.40
	GSA shpk	4410	36.1	159,903.9	31,980.78	191,884.68
	HSE d.o.o.	3320	38.6	128,166.2	25,633.24	153,799.44
	<b>Totali</b>	<b>28,206.00</b>	<b>43.49</b>	<b>1,226,605.92</b>	<b>245,321.18</b>	<b>1,471,927.10</b>

Maj 2024	Shoqëritë	Blerje		Vlera	TVSH	Vlera me TVSH
		Sasia (MWh)	EUR/MWh			
	Future Energy Trading&Exchange Doves	210	50.0	10,497.0	2,099.58	12,596.58
	GEN-I Tirana sh.p.k.	1680	49.1	82,544	16,508.8	99,052.8
	AlbEsp Trading&Consulting	1260	48.6	61,198.2	12,239.64	73,437.84
	Emer Trade sh.p.k.	4284	50.9	218,055.6	43,611.12	261,666.72
	Aspo d.o.o Bosgrad	546	49.6	27,103.44	5,420.68	32,524.12
	NOA Energy Trade sh.p.k.	2100	50.1	105,270	21,054.00	126,324.00
	<b>Totali</b>	<b>10,080.00</b>	<b>50.06</b>	<b>504,582.54</b>	<b>95,495.82</b>	<b>600,078.36</b>

Mars 2024	Shoqëritë	Shitje		Vlera	TVSH	Vlera me TVSH
		Sasia (MWh)	EUR/MWh			
	Emer Trade sh.p.k.	1,600	71.40	114,240.00	22,848.00	137,088.00
	Danske Commodities Albania sh.p.k.	2,740	65.50	179,463.20	35,892.64	215,355.84
	EZ-S ENERGY sh.p.k.	160	70.06	11,209.60	-	11,209.60
	Gen-I	1,900	71.79	136,400.00	27,280.00	163,680.00
	<b>Totali</b>	<b>6,400</b>	<b>68.96</b>	<b>441,318.80</b>	<b>86,021.84</b>	<b>527,340.64</b>

Prill 2024	Shoqëritë	Shitje		Vlera	TVSH	Vlera me TVSH
		Sasia (MWh)	EUR/MWh			
	AlbEsp Trading & Consulting sh.p.k.	1,25	83.06	10,383	2,077	12,460
	Aven Energy Trading sh.a.	750	58.15	43,613	8,723	52,336
	Danske Commodities Albania sh.p.k.	4,500	77.71	349,695	69,939	419,634
	Emer Trade sh.p.k.	9,275	78.98	738,075	147,615	885,690
	Fuente Dynamics	100	58.33	5,833	1,167	7,000
	Fuente Dynamics Tirane	350	86.06	30,122	6,024	36,146
	GEN-I Tirana sh.p.k.	9,590	75.24	721,552	144,310	865,862
	GSA shpk	1,950	95.36	186,350	37,270	223,620
	HSE d.o.o.	850	79.53	67,600	13,520	81,120
	Infrint Power Solution sh.p.k.	125	90.99	11,374	2,275	13,649
	NOA Energy Trade sh.p.k.	750	60.15	45,113	9,023	54,136
	Renny Trading Group sh.p.k.	1,075	63.69	68,466	13,693	82,160
	<b>Totali</b>	<b>29,890.00</b>	<b>77.22</b>	<b>2,308,173.00</b>	<b>461,634.60</b>	<b>2,769,807.60</b>

Maj 2024	Shoqëritë	Shitje		Vlera	TVSH	Vlera me TVSH
		Sasia (MWh)	EUR/MWh			
	Infrint Power Solutions sh.p.k.	250	70.99	17,747.50	3,549.50	21,297.00
	Future Energy Trading&Exchange	250	77.19	19,297.50	3,859.50	23,157.00
	GSA sh.p.k.	2,500	82.38	205,950.00	41,190.00	247,140.00
	AlbEsp Trading&Consulting	1,000	78.37	78,370.00	15,674.00	94,044.00
	Renny Trading Group sh.p.k.	1,000	78.13	78,130.00	15,626.00	93,756.00
	EFT AG	5,000	70	350,000.00	-	350,000.00
	<b>Totali</b>	<b>10,000</b>	<b>74.95</b>	<b>749,495.00</b>	<b>79,899.00</b>	<b>829,394.00</b>

Korrik 24	Shoqëritë	Blerje Korrik 24		Vlera	TVSH	Vlera me TVSH
		Sasia (MWh)	EUR/MWh			
	HSE d.o.o.	100	116	11,600.00	-	11,600.00
	<b>Totali</b>	<b>100</b>	<b>116.00</b>	<b>11,600.00</b>	<b>-</b>	<b>11,600.00</b>

Korrik 24	Shoqëritë	Shitje		Vlera	TVSH	Vlera me TVSH
		Sasia (MWh)	EUR/MWh			
	GEN-I Tirana sh.p.k.	400	222.2	88,880.00	17,776.00	106,656.00
	<b>Totali</b>	<b>400</b>	<b>222.20</b>	<b>88,880.00</b>	<b>17,776.00</b>	<b>106,656.00</b>

Shtator 2024	Shoqëritë	Blerje Shtator 24		Vlera	TVSH	Vlera me TVSH
		Sasia (MWh)	EUR/MWh			
	AlbEsp Trading & Consulting sh.p.k.	1,000.00	98.84	106,750.00	21,350.00	128,100.00
	Aven Energy Trading sh.a.	2,832.00	104.48	295,879.20	59,175.84	355,055.04
	Danske Commodities Albania sh.p.k.	8,736.00	109.94	960,435.84	192,087.17	1,152,523.01
	EFT AG	33,840.00	110.31	3,732,922.20	746,584.44	4,479,506.64
	Emer Trade sh.p.k.	25,500.00	109.87	2,801,802.00	560,360.40	3,362,162.40
	Fuente Dynamics Tirane	30.00	84.21	2,526.30	505.26	3,031.56
	GEN-I Tirana sh.p.k.	6,180.00	101.42	626,778.00	125,355.60	752,133.60
	GSA sh.p.k.	7,560.00	105.23	795,513.60	159,102.72	954,616.32
	HSE d.o.o.	7,140.00	102.44	732,100.00	146,420.00	878,520.00
	NOA Energy Trade sh.p.k.	9,150.00	106.67	975,993.00	195,198.60	1,171,191.60
	Renny Trading Group sh.p.k.	1,680.00	104.89	176,212.80	35,243.04	211,455.84
	SPVBLUEI	354.00	94.85	33,576.00	6,715.20	40,291.20
	<b>Totali</b>	<b>104,082.00</b>	<b>108.00</b>	<b>11,240,495.34</b>	<b>1,355,094.23</b>	<b>12,595,589.57</b>

Shtator 2024	Shoqëritë	Shitje Shtator 24		Vlera	TVSH	Vlera me TVSH
		Sasia (MWh)	EUR/MWh			
	AlbEsp Trading & Consulting sh.p.k.	28	167.13	4,679.64	935.93	5,615.57
	Fuente Dynamics Tirane	60	184.11	11,046.60	2,209.32	13,255.92
	GEN-I Tirana sh.p.k.	800	136.00	108,800.00	21,760.00	130,560.00
	GSA sh.p.k.	60	185.00	11,100.00	2,220.00	13,320.00
	NOA Energy Trade sh.p.k.	1,000	184.60	184,600.00	36,920.00	221,520.00
	<b>Totali</b>	<b>1,948</b>	<b>164.39</b>	<b>320,226.24</b>	<b>64,045.25</b>	<b>384,271.49</b>

Shitje e energjise elektrike - Tregtar i regjistruar ne Burset Shqiptare te Energjise ALPEX sh.a

Muaji	Shoqëria	Periodha	Sasia	Cmimi	Vlera	TVSH	Vlera me TVSH	
			MWh	Eur/MWh	Eur	Eur	Eur	
Janar	Shitje ne Burse ALPEX	01-31.01.2024	20,995.40	93.94	1,972,212.53	-	1,972,212.53	
Shkurt		01-29.02.2024	8,452.40	85.28	720,784.90	-	720,784.90	
Mars		01-31.03.2024	1,898.81	94.37	179,185.95	-	179,185.95	
Prill		01-30.04.2024	798.16	73.84	58,934.02	-	58,934.02	
Maj		01-31.05.2024	4,331.87	69.65	301,707	-	301,707	
Qeshor		01-30.06.2024	807.85	95.88	29,376	-	29,376	
Korrik		01-31.07.2024	3.44	177.93	612.08	-	612.08	
Gusht		01-31.08.2024	2.45	167.39	410	-	410	
Shator		01-30.09.2024	174.89	157.76	27,591	-	27,591	
Tetor		01-31.10.2024	3.44	129.03	443.88	-	443.88	
Novem		01-30.11.2024	-	-	-	-	-	
Dhjetor		01-31.12.2024	-	-	-	-	-	
<b>Totali</b>		<b>Shitje</b>	<b>Janar-Dhjetor</b>	<b>36,968.21</b>	<b>89</b>	<b>3,291,257</b>	<b>-</b>	<b>3,291,257</b>

Blerje e energjisë elektrike – Tregtar i regjistruar ne Bursën Shqiptare të Energjisë ALPEX sh.a								
Muaji	Shoqëria	Periodha	Sasia	Cmimi	Vlera	TVSH	Vlera me TVSH	
			MWh	Eur/MWh	Eur	Eur	Eur	
Janar	Blerje ne Burse ALPEX	01-31.01.2024	-	-	-	-	-	
Shkurt		01-29.02.2024	-	-	-	-	-	
Mars		01-31.03.2024	-	-	-	-	-	
Prill		01-30.04.2024	-	-	-	-	-	
Maj		01-31.05.2024	-	-	-	-	-	
Qeshor		01-30.06.2024	1,176.51	76.44	89,937	-	89,937	
Korrik		01-31.07.2024	6,093.51	99.24	604,714.55	-	604,714.55	
Gusht		01-31.08.2024	6,363.88	-	657,465.80	-	657,465.80	
Shator		01-30.09.2024	3,824.05	91.40	349,514.40	-	349,514.40	
Tetor		01-31.10.2024	3,717.72	95.43	354,772.71	-	354,772.71	
Novem		01-30.11.2024	-	-	-	-	-	
Dhjetor		01-31.12.2024	-	-	-	-	-	
<b>Totali</b>		<b>Blerje ne Burse</b>	<b>Janar-Dhjetor</b>	<b>21,175.67</b>	<b>97.11</b>	<b>2,056,404</b>	<b>0</b>	<b>2,056,404</b>

**Blerje e energjisë elektrike sipas detyrimit për shërbim publik & vendosur me VAM 4562022 & 4192023**

Muaji	Shoqëria	Periodha	Sasia	Cmimi	Vlera	TVSH	Vlera me TVSH
			MWh	Eur/MWh	Eur	Eur	Eur
Qeshor 2024	Shoqëritë						
	AlbEco Trading & Consulting sh.p.k.	1,440	73.98	106,536.00	21,307.20	127,843.20	
	Ayen Energy Trading sh.a.	9,900	111.93	1,108,143.00	221,628.60	1,329,771.60	
	Danske Commodities Albania sh.p.k.	8,400	116.47	978,348.00	195,669.60	1,174,017.60	
	EFT AG	9,900	91.63	909,861.30	181,970.26	1,091,831.56	
	Ener Trade sh.p.k.	35,280	100.51	3,545,868.00	709,173.60	4,255,041.60	
	Fuente Dynamics Tirane	120	52.52	6,302.40	1,260.48	7,562.88	
	GEN-I Tirana sh.p.k.	9,750	117.04	1,141,111.50	228,222.30	1,369,333.80	
	GSA sh.p.k.	1,530	99.86	152,791.20	30,558.24	183,349.44	
	HSE d.o.o.	2,700	89.46	241,542.00	48,308.40	289,850.40	
	NOA Energy Trade sh.p.k.	15,840	102.41	1,622,208.00	324,441.60	1,946,649.60	
	Renergy Trading Group sh.p.k.	882	79.58	70,187.04	14,037.41	84,224.45	
	<b>Totali</b>		<b>95,772</b>	<b>103.19</b>	<b>9,882,898.44</b>	<b>1,746,299.83</b>	<b>11,629,197.47</b>

Muaji	Shoqëria	Periodha	Sasia	Cmimi	Vlera	TVSH	Vlera me TVSH
			MWh	Eur/MWh	Eur	Eur	Eur
Korrik 2024	Shoqëritë						
	AlbEco Trading & Consulting sh.p.k.	2,540	122.19	310,370.20	62,074.04	372,444.24	
	Ayen Energy Trading sh.a.	3,600	127.80	460,080.00	92,016.00	552,096.00	
	AXPO Beograd d.o.o.	2,632	134.96	355,208.00	71,041.60	426,249.60	
	Danske Commodities Albania sh.p.k.	5,960	188.92	748,105.20	149,621.04	897,726.24	
	EFT AG	30,000	138.20	4,146,000.00	829,189.44	4,975,189.44	
	Ener Trade sh.p.k.	26,016	124.92	3,249,808.80	649,961.76	3,899,770.56	
	Fuente Dynamics Tirane	120	122.32	14,678.40	2,935.68	17,614.08	
	GEN-I Tirana sh.p.k.	7,300	133.23	969,188.00	193,837.60	1,163,025.60	
	GSA sh.p.k.	10,440	130.69	1,364,430.60	272,887.32	1,637,317.92	
	HSE d.o.o.	10,730	111.09	1,192,024.00	238,404.80	1,430,428.80	
	NOA Energy Trade sh.p.k.	2,688	108.33	291,191.04	58,238.21	349,429.25	
	Renergy Trading Group sh.p.k.	2,108	118.43	249,652.60	49,930.52	299,583.12	
	SPVBLUE1	4,300	130.84	562,561.20	112,512.24	675,073.44	
<b>Totali</b>		<b>106,524</b>	<b>130.33</b>	<b>13,883,257.44</b>	<b>2,467,205.11</b>	<b>16,350,462.55</b>	

Muaji	Shoqëria	Periodha	Sasia	Cmimi	Vlera	TVSH	Vlera me TVSH
			MWh	Eur/MWh	Eur	Eur	Eur
Gusht 2024	Shoqëritë						
	AlbEco Trading & Consulting sh.p.k.	3,900	129.07	503,357.40	100,671.48	604,028.88	
	Ayen Energy Trading sh.a.	13,200	129.45	1,708,716.00	341,743.20	2,050,459.20	
	Danske Commodities Albania sh.p.k.	12,000	147.15	1,765,771.20	353,154.24	2,118,925.44	
	EFT AG	51,540	131.97	6,801,591.00	1,360,318.20	8,161,909.20	
	Ener Trade sh.p.k.	62,840	130.61	8,207,684.00	1,641,536.80	9,849,220.80	
	Fuente Dynamics Tirane	160	122.32	19,571.20	3,914.24	23,485.44	
	GEN-I Tirana sh.p.k.	10,950	127.21	1,390,431.00	278,086.42	1,668,517.42	
	GSA sh.p.k.	9,620	138.48	1,332,189.80	266,437.96	1,598,627.76	
	HSE d.o.o.	5,720	127.92	731,720.00	146,344.00	878,064.00	
	NOA Energy Trade sh.p.k.	8,400	124.70	1,047,480.00	209,496.00	1,256,976.00	
	Renergy Trading Group sh.p.k.	3,150	126.01	398,931.50	79,786.30	478,717.80	
	SPVBLUE1	1,640	102.18	167,580.00	33,516.00	201,096.00	
	<b>Totali</b>		<b>183,100</b>	<b>131.47</b>	<b>24,073,024.20</b>	<b>3,307,942.64</b>	<b>27,380,966.84</b>

Muaji	Shoqëria	Periodha	Sasia	Cmimi	Vlera	TVSH	Vlera me TVSH
			MWh	Eur/MWh	Eur	Eur	Eur
Shator 2024	Shoqëritë						
	Danske Commodities Albania sh.p.k.	1,920	147.68	283,545.60	56,709.12	340,254.72	
	EFT AG	11,400	156.60	1,785,267.80	357,053.56	2,142,321.36	
	Ener Trade sh.p.k.	11,520	156.64	1,804,464.00	360,892.80	2,165,356.80	
	GSA sh.p.k.	960	151.00	144,960.00	28,992.00	173,952.00	
	NOA Energy Trade sh.p.k.	4,200	153.70	645,540.00	129,108.00	774,648.00	
<b>Totali</b>		<b>30,000</b>	<b>155.46</b>	<b>4,663,777.20</b>	<b>575,701.92</b>	<b>5,239,479.12</b>	

Muaji	Shoqëria	Periodha	Sasia	Cmimi	Vlera	TVSH	Vlera me TVSH
			MWh	Eur/MWh	Eur	Eur	Eur
Tetor 2024	Shoqëritë						
	AlbEco Trading & Consulting sh.p.k.	2,640	98.96	261,254.40	52,250.88	313,505.28	
	Ayen Energy Trading sh.a.	9,242	105.89	978,651.20	195,730.24	1,174,381.44	
	AXPO d.o.o.	960	125.98	120,940.80	24,188.16	145,128.96	
	Danske Commodities Albania sh.p.k.	2,400	78.74	188,976.00	37,795.20	226,771.20	
	EFT AG	22,440	113.43	2,545,291.20	509,058.24	3,054,349.44	
	Ener Trade sh.p.k.	8,580	119.06	1,021,548.00	204,309.60	1,225,857.60	
	Fuente Dynamics Tirane	240	109.60	26,304.00	5,260.80	31,564.80	
	GEN-I Tirana sh.p.k.	1,800	84.21	151,578.00	3,031.56	154,609.56	
	GSA sh.p.k.	3,720	91.16	339,132.00	67,826.40	406,958.40	
	HSE d.o.o.	4,960	104.19	516,798.40	103,359.68	620,158.08	
	NOA Energy Trade sh.p.k.	10,370	110.90	1,150,076.00	230,015.20	1,380,091.20	
	Renergy Trading Group sh.p.k.	1,110	103.25	1,155,611.00	231,122.20	1,386,733.20	
	SPVBLUE1	480	96.25	46,200.00	9,240.00	55,440.00	
<b>Totali</b>		<b>80,312</b>	<b>107.86</b>	<b>8,662,436.40</b>	<b>969,225.68</b>	<b>9,631,662.08</b>	

Burimi: KESH sh.a

Regjistri Kombetar REMIT Shqiptari															
Nr.	Vendi	Kodi EICR	Data e paraqitjes	Emri i Lajit / Kompanisë	Forma e Lajit	Adresa e Kompanisë (Zyra Qendrore)	Dyfishi i tabelës Kompanisë	ZIP Code	Kodi EIC i Kompanisë	Kodi BIC i Kompanisë	Kodi LEI i Kompanisë	NIFPT i Kompanisë	E-mail i Kompanisë	Website Kompanie	Webpage ku janë publikuar informacionet e brendshme
1	Shqipëri	ECRB-AL-20210114-001	01/01/2022	OKA	SHPK	Njësia Rishikëdhëse Nr.8, Breshnja, Breshnjë 44		1013	TRIOKA-N	SGSRBALT		003938414	ok@okabank.com	www.okabank.com	www.okabank.com
2	Shqipëri	ECRB-AL-20180114-001	25/02/2022	CINFA Finance	SHPK			1009	FIN-13206G-NA	SGSRBALT		634113084	info@cinfa.com	www.cinfa.com	www.cinfa.com
3	Shqipëri	ECRB-AL-20210114-001	01/01/2022	Albania Leasing & Capital	SHPK			1009	FIN-13206G-NA	SGSRBALT		634113084	info@cinfa.com	www.cinfa.com	www.cinfa.com
4	Shqipëri	ECRB-AL-20210114-001	01/01/2022	Komerciale Investime Shqiptare Sh.p.k	SHPK	Rruga "Vlora Paloka", Shp. 20		1023	FIN-13206G-NA	SGSRBALT		634113084	info@cinfa.com	www.cinfa.com	www.cinfa.com
5	Shqipëri	ECRB-AL-20210114-001	01/01/2022	NVA Finance	SHPK	Rruga "Vlora Paloka", Shp. 20		1023	FIN-13206G-NA	SGSRBALT		634113084	info@cinfa.com	www.cinfa.com	www.cinfa.com
6	Shqipëri	ECRB-AL-20210114-001	01/01/2022	Antimarkete Shqiptare e Transportit	SHPK	Rruga "Vlora Paloka", Shp. 20		1023	FIN-13206G-NA	SGSRBALT		634113084	info@cinfa.com	www.cinfa.com	www.cinfa.com
7	Shqipëri	ECRB-AL-20210114-001	18/02/2022	ENVO Telecom	SHPK	Rruga "Pak Kones" Nr.1 Pallati iqindor i qendres		1001	SAX-1100-ENVT	SGSRBALT		85240280P	info@envo.com	www.envo.com	www.envo.com
8	Shqipëri	ECRB-AL-20210114-001	12/07/2022	Be-Team Group	SHPK	Rruga "Vlora Paloka", Shp. 20		1023	SAX-1100-ENVT	SGSRBALT		85240280P	info@envo.com	www.envo.com	www.envo.com
9	Shqipëri	ECRB-AL-20210114-001	18/02/2022	Team International Development	SHPK	Rruga "Vlora Paloka", Shp. 20		1023	SAX-1100-ENVT	SGSRBALT		85240280P	info@envo.com	www.envo.com	www.envo.com
10	Shqipëri	ECRB-AL-20210114-001	18/02/2022	ENSO TRADE	SHPK	Rruga "Vlora Paloka", Shp. 20		1023	SAX-1100-ENVT	SGSRBALT		85240280P	info@envo.com	www.envo.com	www.envo.com
11	Shqipëri	ECRB-AL-20210114-001	01/01/2022	Enova Energy Group Sh.p.k	SHPK	Rruga "Vlora Paloka", Shp. 20		1023	SAX-1100-ENVT	SGSRBALT		85240280P	info@envo.com	www.envo.com	www.envo.com
12	Shqipëri	ECRB-AL-20180114-001	01/01/2022	Enova Energy Group Sh.p.k	SHPK	Rruga "Vlora Paloka", Shp. 20		1023	SAX-1100-ENVT	SGSRBALT		85240280P	info@envo.com	www.envo.com	www.envo.com
13	Shqipëri	ECRB-AL-20210114-001	16/02/2022	Enova Energy Trading and Exchange Dynamics Dept of Trade	SHPK	Rruga "Vlora Paloka", Shp. 20		1023	SAX-1100-ENVT	SGSRBALT		85240280P	info@envo.com	www.envo.com	www.envo.com
14	Shqipëri	ECRB-AL-20210114-001	20/02/2022	Enova Energy	SHPK	Rruga "Vlora Paloka", Shp. 20		1023	SAX-1100-ENVT	SGSRBALT		85240280P	info@envo.com	www.envo.com	www.envo.com
15	Shqipëri	ECRB-AL-20210114-001	20/02/2022	Enova Energy	SHPK	Rruga "Vlora Paloka", Shp. 20		1023	SAX-1100-ENVT	SGSRBALT		85240280P	info@envo.com	www.envo.com	www.envo.com
16	Shqipëri	ECRB-AL-20180114-001	01/01/2022	Enova Energy	SHPK	Rruga "Vlora Paloka", Shp. 20		1023	SAX-1100-ENVT	SGSRBALT		85240280P	info@envo.com	www.envo.com	www.envo.com
17	Shqipëri	ECRB-AL-20210114-001	17/02/2022	Devoll Hydropower	SHPK	ABA Business Center, Zyrë Nr. 128, Rruga "Prapa Gjon Palaj"		1010	FIN-13206G-NA	SGSRBALT	52990HFCS680QIBK89	63421000C	info@devoll.com	www.devoll.com	http://www.devoll.com
18	Shqipëri	ECRB-AL-20210114-001	18/02/2022	ENVO Trading (Shqipëri)	SHPK	Njësia Rishikëdhëse Nr. 8, Breshnja, Breshnjë 44		1010	FIN-13206G-NA	SGSRBALT		63421000C	info@devoll.com	www.devoll.com	http://www.devoll.com
19	Shqipëri	ECRB-AL-20210114-001	16/02/2022	Leopards & Energy	SHPK	Rruga "Vlora Paloka", Shp. 20		1023	SAX-1100-ENVT	SGSRBALT		63421000C	info@devoll.com	www.devoll.com	http://www.devoll.com
20	Shqipëri	ECRB-AL-20210114-001	17/02/2022	FURZANI FREIGHT TR. LIME	SHPK	Rruga "Vlora Paloka", Shp. 20		1023	SAX-1100-ENVT	SGSRBALT		63421000C	info@devoll.com	www.devoll.com	http://www.devoll.com
21	Shqipëri	ECRB-AL-20210114-002	17/02/2022	KIRUMI INTERNATIONAL	SHPK	Rruga Breshnja Rruga, jafllinac i K.T. "Green Park", Apart.39, kat.6, Njësia Administrative Nr.5		1001	FIN-13206G-NA	SGSRBALT	K0272730T	K0272730T	info@kirumi.com	www.kirumi.com	www.kirumi.com
22	Shqipëri	ECRB-AL-20210114-002	17/02/2022	Danko Commodities Albania	SHPK	Rruga Breshnja Rruga, jafllinac i K.T. "Green Park", Apart.39, kat.6, Njësia Administrative Nr.5		1000	FIN-13206G-NA	SGSRBALT		L21700408	info@danke.com	www.danke.com	www.danke.com
23	Shqipëri	ECRB-AL-20210114-001	20/02/2022	Deputa Energy	SHPK	Rruga "Prapa Gjon Palaj", Njësia Nr. 12, ABA Business Center		1010	FIN-13206G-NA	SGSRBALT	FFFFPAUTR	K02620004	info@deputa.com	www.deputa.com	www.deputa.com
24	Shqipëri	ECRB-AL-20210114-001	20/02/2022	Deputa Energy	SHPK	Rruga "Prapa Gjon Palaj", Njësia Nr. 12, ABA Business Center		1010	FIN-13206G-NA	SGSRBALT	FFFFPAUTR	K02620004	info@deputa.com	www.deputa.com	www.deputa.com
25	Shqipëri	ECRB-AL-20210114-002	20/02/2022	Furzani Shërbimet Universale	SHPK	Rruga "Vlora Paloka", Shp. 20		1023	SAX-1100-ENVT	SGSRBALT		L21700408	info@danke.com	www.danke.com	www.danke.com
26	Shqipëri	ECRB-AL-20210114-001	21/02/2022	LADHINA BANKA	SHPK	Rruga "Vlora Paloka", Shp. 20		1023	SAX-1100-ENVT	SGSRBALT		L21700408	info@danke.com	www.danke.com	www.danke.com
27	Shqipëri	ECRB-AL-20210114-001	21/02/2022	Heq-Rishikëdhëse J.E	SHPK	Rruga "Vlora Paloka", Shp. 20		1023	SAX-1100-ENVT	SGSRBALT		L21700408	info@danke.com	www.danke.com	www.danke.com
28	Shqipëri	ECRB-AL-20210114-001	21/02/2022	Albania Leasing	SHPK	Rruga "Vlora Paloka", Shp. 20		1023	SAX-1100-ENVT	SGSRBALT		L21700408	info@danke.com	www.danke.com	www.danke.com
29	Shqipëri	ECRB-AL-20210114-001	21/02/2022	Albania Leasing	SHPK	Rruga "Vlora Paloka", Shp. 20		1023	SAX-1100-ENVT	SGSRBALT		L21700408	info@danke.com	www.danke.com	www.danke.com
30	Shqipëri	ECRB-AL-20210114-001	21/02/2022	Albania Leasing	SHPK	Rruga "Vlora Paloka", Shp. 20		1023	SAX-1100-ENVT	SGSRBALT		L21700408	info@danke.com	www.danke.com	www.danke.com
31	Shqipëri	ECRB-AL-20210114-001	21/02/2022	Albania Leasing	SHPK	Rruga "Vlora Paloka", Shp. 20		1023	SAX-1100-ENVT	SGSRBALT		L21700408	info@danke.com	www.danke.com	www.danke.com
32	Shqipëri	ECRB-AL-20210114-001	21/02/2022	Albania Leasing	SHPK	Rruga "Vlora Paloka", Shp. 20		1023	SAX-1100-ENVT	SGSRBALT		L21700408	info@danke.com	www.danke.com	www.danke.com
33	Shqipëri	ECRB-AL-20210114-001	21/02/2022	Albania Leasing	SHPK	Rruga "Vlora Paloka", Shp. 20		1023	SAX-1100-ENVT	SGSRBALT		L21700408	info@danke.com	www.danke.com	www.danke.com
34	Shqipëri	ECRB-AL-20210114-001	21/02/2022	Albania Leasing	SHPK	Rruga "Vlora Paloka", Shp. 20		1023	SAX-1100-ENVT	SGSRBALT		L21700408	info@danke.com	www.danke.com	www.danke.com
35	Shqipëri	ECRB-AL-20210114-001	21/02/2022	Albania Leasing	SHPK	Rruga "Vlora Paloka", Shp. 20		1023	SAX-1100-ENVT	SGSRBALT		L21700408	info@danke.com	www.danke.com	www.danke.com
36	Shqipëri	ECRB-AL-20210114-001	21/02/2022	Albania Leasing	SHPK	Rruga "Vlora Paloka", Shp. 20		1023	SAX-1100-ENVT	SGSRBALT		L21700408	info@danke.com	www.danke.com	www.danke.com
37	Shqipëri	ECRB-AL-20210114-001	21/02/2022	Albania Leasing	SHPK	Rruga "Vlora Paloka", Shp. 20		1023	SAX-1100-ENVT	SGSRBALT		L21700408	info@danke.com	www.danke.com	www.danke.com
38	Shqipëri	ECRB-AL-20210114-001	21/02/2022	Albania Leasing	SHPK	Rruga "Vlora Paloka", Shp. 20		1023	SAX-1100-ENVT	SGSRBALT		L21700408	info@danke.com	www.danke.com	www.danke.com
39	Shqipëri	ECRB-AL-20210114-001	21/02/2022	Albania Leasing	SHPK	Rruga "Vlora Paloka", Shp. 20		1023	SAX-1100-ENVT	SGSRBALT		L21700408	info@danke.com	www.danke.com	www.danke.com
40	Shqipëri	ECRB-AL-20210114-001	21/02/2022	Albania Leasing	SHPK	Rruga "Vlora Paloka", Shp. 20		1023	SAX-1100-ENVT	SGSRBALT		L21700408	info@danke.com	www.danke.com	www.danke.com
41	Shqipëri	ECRB-AL-20210114-001	21/02/2022	Albania Leasing	SHPK	Rruga "Vlora Paloka", Shp. 20		1023	SAX-1100-ENVT	SGSRBALT		L21700408	info@danke.com	www.danke.com	www.danke.com
42	Shqipëri	ECRB-AL-20210114-002	11/07/2022	Ena Energy Parka	SHPK	Rruga "Vlora Paloka", Shp. 20		1023	SAX-1100-ENVT	SGSRBALT		L21700408	info@danke.com	www.danke.com	www.danke.com
43	Shqipëri	ECRB-AL-20210114-001	11/07/2022	"Famula"	SHPK	Rruga "Vlora Paloka", Shp. 20		1023	SAX-1100-ENVT	SGSRBALT		L21700408	info@danke.com	www.danke.com	www.danke.com
44	Shqipëri	ECRB-AL-20210114-001	11/07/2022	DEUTSCHE BANK	SHPK	Rruga "Vlora Paloka", Shp. 20		1023	SAX-1100-ENVT	SGSRBALT		L21700408	info@danke.com	www.danke.com	www.danke.com
45	Shqipëri	ECRB-AL-20210114-001	06/09/2022	GLOBAL TRADING & MERCHANTS	SHPK	Rruga "Vlora Paloka", Shp. 20		1023	SAX-1100-ENVT	SGSRBALT		L21700408	info@danke.com	www.danke.com	www.danke.com
46	Shqipëri	ECRB-AL-20210114-001	16/09/2022	G.K. ENERGY	SHPK	Rruga "Vlora Paloka", Shp. 20		1023	SAX-1100-ENVT	SGSRBALT		L21700408	info@danke.com	www.danke.com	www.danke.com
47	Shqipëri	ECRB-AL-20210114-001	16/09/2022	G.K. ENERGY	SHPK	Rruga "Vlora Paloka", Shp. 20		1023	SAX-1100-ENVT	SGSRBALT		L21700408	info@danke.com	www.danke.com	www.danke.com
48	Shqipëri	ECRB-AL-20210114-001	01/11/2022	Kapartiti Njësia	SHPK	Rruga "Vlora Paloka", Shp. 20		1023	SAX-1100-ENVT	SGSRBALT		L21700408	info@danke.com	www.danke.com	www.danke.com
49	Shqipëri	ECRB-AL-20210114-001	04/12/2022	M&K Energy Trading Co	SHPK	Rruga "Vlora Paloka", Shp. 20		1023	SAX-1100-ENVT	SGSRBALT		L21700408	info@danke.com	www.danke.com	www.danke.com
50	Shqipëri	ECRB-AL-20210114-001	04/12/2022	Enova Energy	SHPK	Rruga "Vlora Paloka", Shp. 20		1023	SAX-1100-ENVT	SGSRBALT		L21700408	info@danke.com	www.danke.com	www.danke.com
51	Shqipëri	ECRB-AL-20210114-001	21/12/2022	Be-Team Group	SHPK	Rruga "Vlora Paloka", Shp. 20		1023	SAX-1100-ENVT	SGSRBALT		L21700408	info@danke.com	www.danke.com	www.danke.com
52	Shqipëri	ECRB-AL-20210114-001	21/12/2022	M&K Energy Trading Co	SHPK	Rruga "Vlora Paloka", Shp. 20		1023	SAX-1100-ENVT	SGSRBALT		L21700408	info@danke.com	www.danke.com	www.danke.com
53	Shqipëri	ECRB-AL-20210114-001	21/12/2022	M&K Energy Trading Co	SHPK	Rruga "Vlora Paloka", Shp. 20		1023	SAX-1100-ENVT	SGSRBALT		L21700408	info@danke.com	www.danke.com	www.danke.com
54	Shqipëri	ECRB-AL-20210114-001	21/12/2022	M&K Energy Trading Co	SHPK	Rruga "Vlora Paloka", Shp. 20		1023	SAX-1100-ENVT	SGSRBALT		L21700408	info@danke.com	www.danke.com	www.danke.com
55	Shqipëri	ECRB-AL-20210114-001	21/12/2022	M&K Energy Trading Co	SHPK	Rruga "Vlora Paloka", Shp. 20		1023	SAX-1100-ENVT	SGSRBALT		L21700408	info@danke.com	www.danke.com	www.danke.com
56	Shqipëri	ECRB-AL-20210114-001	21/12/2022	M&K Energy Trading Co	SHPK	Rruga "Vlora Paloka", Shp. 20		1023	SAX-1100-ENVT	SGSRBALT		L21700408	info@danke.com	www.danke.com	www.danke.com
57	Shqipëri	ECRB-AL-20210114-001	21/12/2022	M&K Energy Trading Co	SHPK	Rruga "Vlora Paloka", Shp. 20		1023	SAX-1100-ENVT	SGSRBALT		L21700408	info@danke.com	www.danke.com	www.danke.com
58	Shqipëri	ECRB-AL-20210114-001	19/02/2024	COSMOGICAL	SHPK	Rruga "Vlora Paloka", Shp. 20		1023	SAX-1100-ENVT	SGSRBALT		L21700408	info@danke.com	www.danke.com	www.danke.com
59	Shqipëri	ECRB-AL-20210114-001	11/04/2024	PROTERGA ENERGY ALBANIA	SHPK	Rruga "Vlora Paloka", Shp. 20		1023	SAX-1100-ENVT	SGSRBALT		L21700408	info@danke.com	www.danke.com	www.danke.com
60	Shqipëri	ECRB-AL-20210114-001	07/08/2024	M&K Energy Trading Co	SHPK	Rruga "Vlora Paloka", Shp. 20		1023	SAX-1100-ENVT	SGSRBALT		L21700408	info@danke.com	www.danke.com	www.danke.com
61	Shqipëri	ECRB-AL-20210114-001	28/08/2024	M&K Energy Trading Co	SHPK	Rruga "Vlora Paloka", Shp. 20		1023	SAX-1100-ENVT	SGSRBALT		L21700408	info@danke.com	www.danke.com	www.danke.com
62	Shqipëri	ECRB-AL-20210114-001	04/07/2024	Nova Inverter	SHPK	Rruga "Vlora Paloka", Shp. 20									