

BILANCI ENERJITIK 8- MUJORIT TË PARË 2024 (MWh)

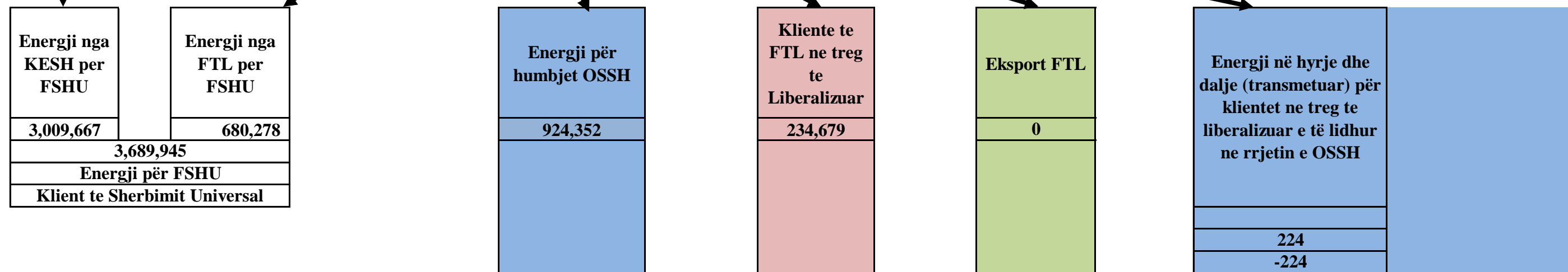
Prodhimi neto publik	
Prodhimi Neto KESH sha	
3,009,890	
Blerje KESH ne treg te liberalizuar	
Prodhim+Blerje	3,009,890
Shkembime (hyrje) KEK	
Shkembime (dalje) KEK	223
Energji sherbime ndihmese+disbal	
Energji per FSHU nga KESH sha	3,009,667

Prodhuar nga PPE në rrjetin e OSSH			Prodhuar nga PPE ne rrjetin e OST		Prodhues te pavarur								
HEC Lanabregas	HEC.Priv/Kon ne Rrjetin e OSSH për FTL	Fotovoltaik (kont FTL)	HC.Priv/Kon ne Rrjetin e OST për FTL	HEC Ashta	HEC Banja	HEC Moglica	HEC KURUM	HEC Peshqesh	HEC Fangu	HEC Qami	SPV Blue 1	Nova Solar	Fotovoltaik (ne treg te lire)
11,317	617,950	49,400	672,632	159,380	125,900	224,618	253,688	67,786	164,455	2,722	43,252	7,244	31,843

Prodhim neto vendas	5,442,077
---------------------	-----------

Energji e siguruar nga FTL					
Blerje HEC Lanabregas	Blerje HC.Priv/Kon ne Rrjetin e OSSH për FTL	Blerje FOTOVO LTAIK	Blerje HC.Priv/Kon ne Rrjetin e OST për FTL	Blerje Neto Ashta	Blerje ne Treg të Liberalizuar nga FTL
11,317	617,950	49,400	672,632	159,380	328,854
1,839,533					

Balanca në interkoneksion (dhenie)	(32,090)
------------------------------------	----------



KONSUMI I ENERJISE NE SHQIPERI	5,474,166
--------------------------------	-----------

5,474,167

Burimi: OST sha; KESH sha; OSSH sha; FSHU sha; FTL sha; (OSHEE Group sha)

TABELA ME TE DHENA PERIODIKE (MUJORE) TE OSHEE Group Sh.a 2024		Janar	Shkurt	Mars	Prill	Maj	Qershor	Korrik	Gusht	Progressive
A	Energji Totale e Hyrre në OSHEE Group Sh.a (MWh)	759,550	644,990	618,777	515,155	499,220	551,723	675,592	670,974	4,935,981
A.1	Energji e transmetuar nepermjet OST per ilogari te OSHEE Sh.a	614,882	552,439	478,969	392,831	394,525	510,065	649,549	650,026	4,243,286
A.1.1	Nga KESH - Gen nepermjet OST	379,224	386,578	271,570	188,993	216,264	415,609	569,334	582,095	3,009,667
A.1.2	Nga OST si import i OSHEE Sh.a (Energji e blerë në ALPEX për FSHU)	52,081	52,690	53,208	48,313	37,754	28,772	29,596	26,439	328,854
A.1.3	Energji e transmetuar per klientet 35kV (te dal ne treg te parregulluar furnizues te tjere)	740	3,150	6,363	8,742	11,263	14,234	17,108	16,775	78,375
A.1.4	Nga OST per ilogari te klienteve te OSHEE Group Sh.a prodhuar nga HEC-et ne rrjetin e transmetimit	182,836	110,021	147,827	146,784	129,243	51,449	33,512	24,718	826,390
A.1.5	Nga TEC VLORA nepermjet OST	n/a	n/a	n/a	n/a	n/a	n/a	n/a	n/a	n/a
A.1.6	Nga Bistrica 1,2 nepermjet OST	n/a	n/a	n/a	n/a	n/a	n/a	n/a	n/a	n/a
A.1.7	Export OSHEE Group Sh.a	-	-	-	-	-	-	-	-	-
A.2	Energji elektrike e injektuar ne OST nga Hec-et Lokale	73,759	35,851	73,148	67,149	51,938	12,519	7,706	7,176	329,245
A.3	Energji e transmetuar direkt ne rrjetin e OSHEE Sh.a	144,668	92,551	139,808	122,323	104,695	41,658	26,043	20,948	692,695
A.3.1	HEC Ulez, Lanabregas	2,114	1,880	1,799	1,828	1,999	838	511	348	11,317
A.3.2	Impjantet Private/me Koncesion	138,715	85,036	128,626	113,003	94,440	32,073	16,032	10,025	617,950
A.3.3	Burimet e Rinovueshme Fotovoltaik (BRE)	3,840	5,635	9,384	7,493	8,256	8,747	9,500	10,575	63,429
A.3.4	Prodhimi i injektuar ne OSSH nga BREE-t ne Treg te Parregulluar	993	1,326	1,666	1,974	2,523	2,609	2,937	2,586	16,613
B	Energji Totale ne Rrjetin e Shperndarjes (MWh)	833,309	680,841	691,925	582,304	551,158	564,242	683,298	678,150	5,265,226
C	Humbjet Totale ne Rrjetin e Shperndarjes (MWh)	177,293	114,411	134,056	97,092	87,861	90,609	120,554	102,476	924,352
C.1	Humbje Teknike njesite e TL (MWh)	10,755	7,774	9,897	7,090	6,502	6,928	10,579	8,223	67,748
C.2	Humbje Teknike ne Zona (MWh)	113,233	78,712	85,639	61,759	54,535	56,559	79,554	77,168	607,159
C.3	Humbje JoTeknike ne Zona (MWh)	53,306	27,926	38,520	28,243	26,824	27,121	30,421	17,085	249,445
C.1	Humbjet Totale ne OSSH Sh.a (%)	21.28%	16.80%	19.37%	16.67%	15.94%	16.06%	17.64%	15.11%	17.56%
C.1.1	Humbje Teknike njesite e TL (%)	1.29%	1.14%	1.43%	1.22%	1.18%	1.23%	1.53%	1.21%	1.29%
C.2.1	Humbje Teknike ne Zona (%)	13.77%	11.70%	12.56%	10.74%	10.02%	10.15%	11.83%	11.52%	11.69%
C.3.1	Humbje JoTeknike ne Zona (%)	6.40%	4.10%	5.57%	4.85%	4.87%	4.81%	4.43%	2.52%	4.74%
D	Energjia e perdorur ne Rrjetin e Shperndarjes	616,637	532,169	526,941	460,749	438,433	445,015	533,590	550,206	4,103,739
D.1	Shitur Klienteve FMF (MWh)	51,042	47,867	49,561	41,162	46,508	48,666	61,100	54,326	400,232
D.1.1	Shitur Klienteve FMF Privat (MWh)	115	26	18	16	13	11	13	13	224
D.1.2	Shitur Klienteve FMF Jobuxhetore (MWh)	1,403	1,356	1,488	1,480	1,635	1,710	1,956	1,800	12,828
D.1.3	Shitur Klienteve FMF 20/10/6 (MWh)	49,525	46,485	48,055	39,666	44,860	46,945	59,132	52,513	387,180
D.2	Shitur Klienteve Private (MWh)	106,813	98,266	92,647	86,275	91,436	115,528	140,794	145,541	877,301
D.2.1	Shitur nga rrjeti i Transmetimit per ilogari te OSHEE Sh.a	695	600	553	403	412	398	522	482	4,065
D.2.2	Shitur per nevoja te veta te OSHEE Sh.a	106,119	97,666	92,094	85,872	91,024	115,130	140,272	145,060	873,236
D.2.3	Shitur Klienteve Private (pa ate per nevoja te veta dhe Ne TL)	3,438	3,258	3,043	2,425	3,962	2,905	5,024	3,239	27,294
D.3	Shitur Klienteve Jobuxhetore (MWh)	17,017	15,936	14,282	10,560	10,352	10,829	13,453	11,361	103,790
D.4	Shitur Klienteve Buxhetore (MWh)	363,827	327,840	287,897	244,436	222,973	240,334	288,404	311,789	2,287,501
D.5	Shitur Klienteve Familjare (MWh)	355,015	319,413	279,590	236,306	214,665	231,723	279,323	301,478	2,217,514
D.5.1	Shitur Klienteve Familjare (MWh)	8,812	8,427	8,307	8,130	8,308	8,611	9,081	10,311	69,987
D.5.2	Shitur Klienteve Familjare per Ambjentet e Perbashketa	740	740	740	740	740	740	740	740	740
D.6	Energji elektrike e injektuar ne OST nga Hec-et Lokale	73,759	35,851	73,148	67,149	51,938	12,519	7,706	7,176	329,245
D.7	Energji elektrike e perdorur nga klientet ne treg te parregulluar	740	3,150	6,363	8,742	11,263	14,234	17,108	16,775	78,375
E	Faturuar muaji Parardhes (000/leke)	7,982,027	7,374,630	6,650,006	6,078,325	5,298,049	5,291,466	5,903,682	7,200,506	51,778,691
F	Arketimet e muajit aktual (000/leke)	7,344,687	7,006,722	6,798,295	6,340,048	5,876,740	5,112,878	6,196,912	6,727,066	51,403,348
F.1	Arketuar per faturat korrente te vitit aktual	43,814	4,919,897	4,403,572	4,022,924	3,965,749	3,283,026	3,971,324	4,786,470	29,399,775
F.3	Arketuar per faturat e tjera te vitit aktual	-	1,479,252	1,768,307	1,362,006	1,576,791	1,791,153	1,674,443	1,674,443	9,651,952
F.4	Arketuar per faturat e tjera te viteve te kaluara	7,300,873	2,086,825	915,472	548,817	545,985	253,061	434,435	266,154	12,351,621
F.1	Arketimet e muajit aktual (%)	92.0%	95.0%	102.2%	104.3%	110.9%	96.6%	105.0%	93.4%	99.3%
F.1.1	Arketuar per faturat korrente te vitit aktual (%)	0.5%	66.7%	66.2%	66.2%	74.9%	62.0%	67.3%	66.5%	56.8%
F.3.3	Arketuar per faturat e tjera te vitit aktual (%)	0.0%	0.0%	22.2%	29.1%	25.7%	29.8%	30.3%	23.3%	18.6%
F.3.4	Arketuar per faturat e tjera te viteve te kaluara (%)	91.5%	28.3%	13.8%	9.0%	10.3%	4.8%	7.4%	3.7%	23.9%
G	Faturuar muaji Raportues (000/leke)	7,374,630	6,650,006	6,078,325	5,298,049	5,291,466	5,903,682	7,200,506	7,524,914	51,321,578
1	Nr. Konsumatoreve gjithsej (Nr.)	1,324,441	1,327,372	1,330,088	1,333,496	1,333,406	1,336,562	1,340,343	1,340,775	1,340,775
2	Fatura te emetuara me lexim konsumi (Nr.)	1,027,226	1,025,143	1,036,467	1,035,495	1,039,374	1,058,729	1,075,309	1,083,924	8,381,667
3	Sasia e energjise se faturuar me lexim konsumi (MWh)	-	-	-	-	-	-	-	-	-
4	Fatura te emetuara me lexim "0" (Nr.)	299,881	301,375	297,510	305,942	303,683	283,805	272,247	262,660	2,327,103
5	Nr.Faturave te emetuara pa lexim (energji e pa matur) (Nr.)	-	-	-	-	-	-	-	-	-
6	Sasia e energjise se faturuar si energji e pamatur (MWh)	-	-	-	-	-	-	-	-	-
7	Nr.Faturave te emetuara pa lexim (dem ekonomik) (Nr.)	101	61	52	26	31	25	27	33	356
8	Sasia e faturuar si dem ekonomik (MWh)	438	300	213	129	212	461	421	279	2,453
9	Nr.Faturave per te cilat eshte arketuar kamat vonese (Nr.)	374,497	322,031	360,283	375,842	393,071	367,026	476,854	468,656	3,138,260
10	Vlera e Kamat vonesave te arketuara (000/leke)	76,046	64,886	72,300	84,802	89,765	77,007	137,571	92,827	695,204

Burimi: OSSH sha, FSHU sha, FTL sha / OSHEE sha

BILANCI OSSH, FSHU,FTL sha 2024 (8-mujori)		
1	ENERGJI TOTALE E HYRE NE RRJETIN E OSSH-se	4,935,981
2	Energji e shitur nga KESH sha per FSHU sha	3,009,667
3	ENERGJI NE HYRJE E BLERE NGA FTL (OSHEE sha)	1,839,531
3.1	Blere nga Prodhimi i PPE në rrjetin e OSSH	678,666
3.2	Blere nga Prodhimi i PPE në rrjetin e OST	832,011
3.3	Blere ne Treg të Liberalizuar nga FTL sha	328,854
4	ENERGJI NE DALJE NGA FTL (OSHEE sha)	1,839,558
4.1	Energji nga FTL per FSHU	680,303
4.2	Energji nga FTL për humbjet OSSH	924,352
4.3	Energji e shitur nga FTL ne treg te liberalizuar	234,679
4.4	Eksport i FTL	-
4.5	Energji vetem per tu transmetuar tek klientet ne treg te liberalizuar (ne rrjetin e OSSH)	224
7	ENERGJI QE KALON NE RRJETIN E OSSH-se	5,265,226
7.1	Energji totale e transmetuar nga OST ne rrjetin e Shpërndarjes	4,554,717
7.2	Energji e transmetuar direkt ne rrjetin e Shpërndarjes nga impiantet e lidhur ne rrjetin e Shpërndarjes	349,422
7.3	Energjia e ngitur ne rrjetin e transmetimit nga centralet e lidhura ne rrjetin e OSSH	329,245
8	Humbje totale ne rrjetin e OSSH-se (%)	17.56

Burimi: OSSH sha; FSHU sha; FTL sha / OSHEE sha

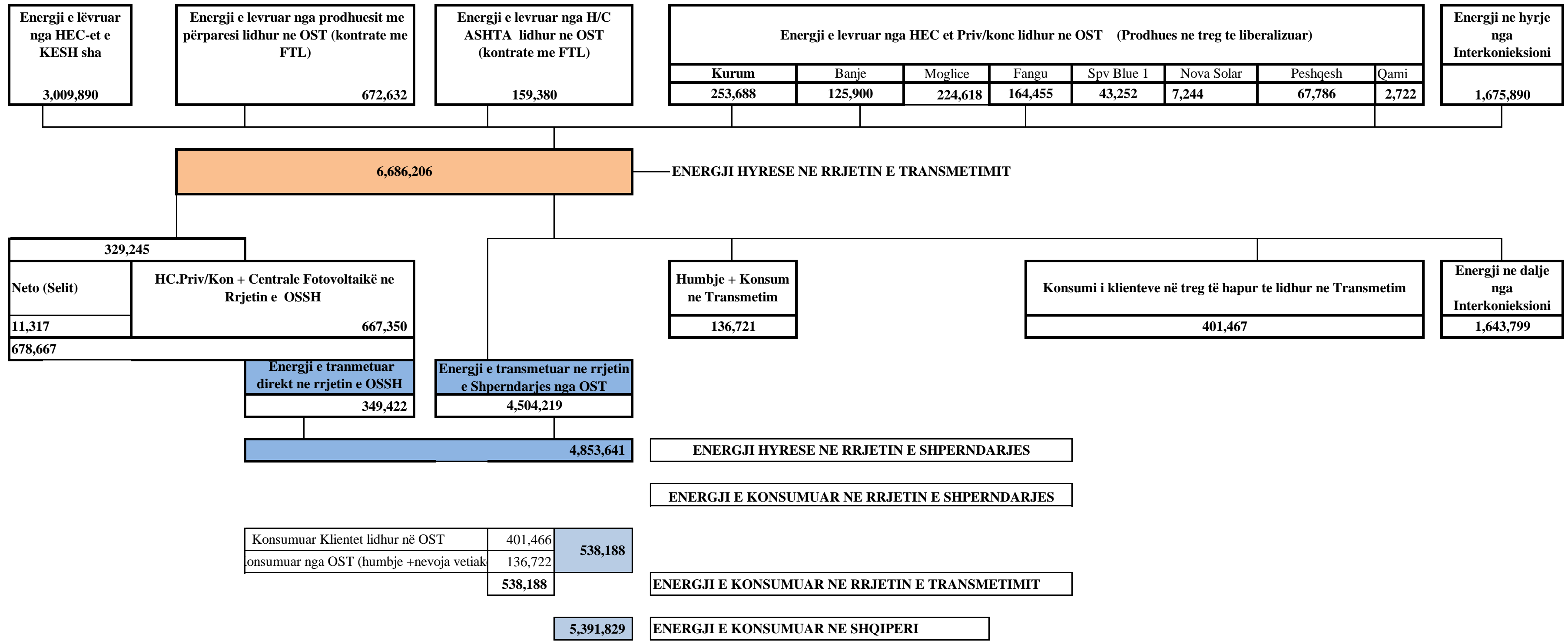
	Janar	Shkurt	Mars	Prill	Maj	Qershor	Korrik	Gusht	2024		
HYRJE	Dhene nga H/C e KESH ne rrjetin e Transmetimit	461,940	434,525	312,293	230,865	333,614	349,424	478,833	408,397	3,009,891	6,736,706
	Dhene nga H/C e me perparesi ne rrjetin e Transmetimit (+Qami)	153,707	86,486	130,461	134,220	114,053	36,385	12,122	7,921	675,355	
	Energji nga Hec-et Lokale levruar ne Rrjetin e Transmetimit (me ngritje)	73,759	35,851	73,148	67,149	51,938	12,519	7,706	7,176	329,246	
	Gjenerim KURUM (prodhues i pavarur)	47,623	36,678	34,155	40,512	31,148	22,427	22,044	19,100	253,687	
	Gjenerim Spv Blue 1 (prodhuese i pavarur)	-	-	-	-	3,343	10,657	15,709	13,543	43,252	
	Gjenerim Nova Solar	-	-	-	-	-	-	854	6,391	7,245	
	HEC ASHTA (prodhues i pavarur Kontr.me OSHEE)	29,506	23,646	19,871	15,359	18,186	15,061	20,207	17,545	159,381	
	HEC BANJE (prodhues i pavarur)	25,295	20,166	19,747	15,855	19,032	8,291	8,757	8,757	125,900	
	HEC MOGLICE (prodhues i pavarur)	55,232	39,392	42,314	25,222	28,288	18,209	8,068	7,894	224,619	
	HEC PESHQESH-T1/637 (prodhues i pavarur)	17,478	8,763	13,692	12,207	10,014	3,162	1,369	1,101	67,786	
	HEC FANGU (prodhues i pavarur)	45,494	23,264	15,108	25,046	24,409	19,663	6,020	5,451	164,455	
Importi(Hyre) nga Linjat e Interkonjeksionit	133,112	187,286	214,751	255,012	141,967	225,720	249,151	268,891	1,675,890		
DALJE	Humbjet ne Transmetim	22,608	17,520	17,149	17,399	16,130	13,854	16,413	15,649	136,722	6,736,706
	Transmetuar ne Rrjetin e Shperndarjes	687,647	586,964	550,408	457,962	443,881	519,626	653,952	654,278	4,554,718	
	Klientene treg te hapur (TL)	36,554	31,249	50,416	58,814	63,498	62,492	65,727	32,717	401,467	
	Eksporti (Dale) nga Linjat e Interkonjeksionit	296,337	260,325	257,566	287,271	252,483	125,546	94,747	69,524	1,643,799	
Humbjet ne Transmetim	22,608	17,520	17,149	17,399	16,130	13,854	16,413	15,649	74,676		
Humbjet ne Transmetim ne %	2.17	1.96	1.96	2.12	2.89	1.95	1.98	2.03	2.05		

Burimi: OST sha

OST sha	Njësia e Matjes	Janar	Shkurt	Mars	Prill	Maj	Qershor	Korrik	Gusht	Shuma 2024 [MWh]
	MWh									
Prodhimi nga KESH_GEN në Rrjetin e Transmetimit	1	461,940	434,525	312,293	230,865	333,613.58	349,424	478,833	408,397	3,009,890
Prodhimi nga HEC/HPP e vogla në Rrjetin e Transmetimit	2	73,759	35,851	73,148	67,149	51,938	12,518.7	7,706	7,176	329,245
Prodhimi nga PPE/IPP e mëdha në Rrjetin e Transmetimit	3	153,707	86,486	130,461	134,220	114,053	36,384.6	12,122	7,921	675,355
Prodhimi nga HEC Peshqesh	4	17,478	8,763	13,692	12,207	10,014	3,162	1,369	1,101	67,786
Prodhimi nga HEC Banja	5	25,295	20,166	19,747	15,855	19,032	8,291	8,757	8,757	125,900
Prodhimi nga HEC FANG	6	45,494	23,264	15,108	25,046	24,409	19,663	6,020	5,451	164,455
Prodhimi nga HEC Moglicë	7	55,232	39,392	42,313	25,222	28,288	18,209	8,068	7,894	224,618
Prodhimi nga HEC Ashta	8	29,506	23,646	19,871	15,359	18,185	15,060	20,207	17,545	159,380
Prodhimi nga Spv Blue 1 T1/139						3,343	10,657	15,709	13,543	43,252
Prodhimi nga Nova Sola Tr 1/322								854	6,391	7,244
Prodhimi nga KURUM (Ulez-Shkopet&Bistrical,2)	9	47,623	36,678	34,155	40,512	31,148	22,427	22,044	19,100	253,688
Eksporti (-) nga Linjat e Interkonjeksionit	D	296,337	260,325	257,566	287,271	252,483	125,546	94,747	69,524	1,643,799
Importi (+) nga Linjat e Interkonjeksionit	R	133,112	187,286	214,751	255,012	141,967	225,720	249,151	268,891	1,675,890
Balanca (Total Interkonjeksioni)	11=(R-D)	163,225	73,039	42,815	32,259	110,516	(100,174)	(154,404)	(199,367)	(32,090)
Energjia Totale në Marrje	12=(1+2+3+4+5+6+7+8+9+10+R)	1,043,146	896,058	875,539	821,446	772,648	710,860	830,840	752,234	6,702,770
Humbjet në Rrjetin e Transmetimit (përfshirë Nevojat Vetjake)	13	22,608	17,520	17,149	17,399	16,130	13,854	16,412	15,649	136,721
Humbjet në Rrjetin e Transmetimit %	14=13/12	2.17	1.96	1.96	2.12	2.088	1.95	1.98	2.03	2.04
Energjia Totale në Dhënie	15=(12-13)	1,020,538	878,538	858,390	804,047	756,518	697,006	814,427	736,585	6,566,049
<i>Transmetuar në Linjat e Interkonjeksionit</i>	16=D	296,337	260,325	257,566	287,271	252,483	125,546	94,747	69,524	1,643,799
<i>Transmetuar tek Klientët e Kualifikuar</i>		36,554	31,249	50,416	58,814	63,498	62,492	65,728	32,717	401,467
<i>EL220-L220KURUM/337</i>		4,874.2	4,501	23,996	24,673	23,274	25,737	24,397	1,319	132,773
<i>F.ARRES-T3/653</i>					1,464	1,528	1,473	1,478	1,648	7,591
<i>Titan T1,T2</i>		9,587.6	9,037	4,561	8,997	10,364	10,143	10,428	7,767	70,886
<i>FUSHE KRUIJE 220kV-T2/058</i>		5,383.0	707	2,988	9,172	10,809	9,629	5,599	4,064	48,353
<i>N/ST 220/6,3Colacent-T1/336</i>		145.3	1,023	1,734	1,746	2,181	592.8	1,492	1,131	10,045
<i>N/ST i GSA EL 110kV-T1/694</i>		8,955.8	8,466	8,959	2,772	162	161	7,282	8,432	45,191
<i>N/ST i GSA EL 110kV-T2/960</i>		-	-	-	-	-	0	-	-	0
<i>N/ST I CWI Albania T1/148</i>		466.1	395	531	416.79	572	557	562	396	3,896
<i>N/ST i AES EL 110kV-T1/690</i>		158.5	22	-	2,414	7,298	7,073	7,277	7,122	31,364
<i>N/ST I AES EL 110kV-T2/692</i>		-	118	147	60	2	0	-	-	327
<i>HEC Moglice T1,T2,T3</i>		1.4	1	1	1	0.83	6.60	0.7	0.27	12
<i>HEC Peshqesh-T1/633</i>		0.9	9	5	4.99	6	25	38	38	127
<i>Spv Blue 1 T1/139</i>						4	14	19	21	59
<i>Nova Sola Tr 1/322</i>								4	27	31
<i>Lajthiza T1/742</i>		14.4	22	17	26.34	21	228	440	619	1,388
<i>HEC Ashta1-T1,HEC Ashta2-T1,</i>		-	-	0.11	0.00	0	0.19	-	-	1
<i>HEC Banje T1,T2</i>		10.8	12	20	19.25	19	20.50	15	15.0	132
<i>HEC Fang-T1,T2,</i>		1.300	35	48	24.5	22	23	45	43.9	242
<i>Gjenerim KURUM</i>		1.296	5	16	8.59	9.84	19	18	16.57	93
<i>FERRO KROM-F1,F2,F3,F4</i>		6,952.9	6,896	7,392	7,013	7,223	6,789	6,634	56	48,956
<i>Transmetuar në rrjetin e Shpërndarjes</i>		687,647	586,964	550,408	457,962	443,881	519,626	653,952	654,278	4,554,717
<i>Transmetuar në rrjetin e Shpërndarjes 110 kV</i>		599,909	512,591	482,164	400,726	392,970	459,925	583,551	586,728	4,018,564
<i>Transmetuar në rrjetin e Shpërndarjes 35 kV</i>		43,519	36,186	33,063	29,398	25,907	32,412	38,243	36,528	275,256
<i>Transmetuar në rrjetin e Shpërndarjes 6, 10, 20 kV</i>		44,219	38,186	35,181	27,838	25,004	27,288	32,158	31,022	260,897

Burimi: OST sha

PARAQITJA SKEMATIKE E FLUKSEVE TE ENERGIJISE NE SISTEMIN ELEKTRO-ENERGJITIK SHQIPETAR VITI 2024 (MWh)



LEGJENDA	
FSHU	FURNIZUES I SHËRBIMIT UNIVERSAL
FMF	FURNIZUES I MUNDËSISË SË FUNDIT

Burimi: OST sha; KESH sha; OSSH sha; FSHU sha; FTL sha; (OSHEE Group sha)

EZ-5 Solar Park												
EZ-5 Solar Park	10	EZ-5 Solar Park	35 kV	587	782	976	1,130	1,441	1,476	1,680	1,514	9,585
EZ-5 Solar Park		EZ-5 Solar Park	35 kV	407	544	690	844	1,082	1,133	1,257	1,073	7,029
FV ALBSOLAR	2	"ALBSOLAR" SH.P.K.	35 kV	185	270	295	366	451	460	553	505	3,085
FV SUN ENERGY SOLUTIONS	2	"SUN ENERGY SOLUTIONS"	35 kV	229	306	368	396	504	481	527	476	3,285
"2 T & 2 B 1979" sh.p.k.	1,95		10 kV	0	487	321	378	451	430	436	402	2,904
SUN POWER 2017 SH.P.K	2			0	0	0	0	0	0	0	0	159
SUN AVENUE SH.P.K	2			0	0	0	0	0	0	0	0	174
BIGWIND SH.P.K	2			0	0	0	0	0	0	0	0	158
HYDROPOWER SH.P.K	2			0	0	0	0	0	0	0	0	164
CONSTRUCTION ENERGY PARTS (C.E.P) SH.P.K	2			0	0	0	0	0	0	0	0	176
DIMAX SH.P.K	2			0	0	0	0	0	0	0	0	177
"ALB SUN ENERGY" Sh.p.k	2			0	0	0	0	0	0	0	0	101
IDI 2005Sh.p.k	2			0	0	0	0	0	0	0	0	475
FU-GENSH.P.K	2			0	0	0	0	0	0	0	0	-
Prodhim i injektuar nga Veteprodhuesit 35 kV. Treg te Parregulluar, PRO FIX/940			35 kV	0	0	19	28	26	60	66	59	257
Prodhim i injektuar nga Veteprodhuesit 20 kV. Treg te Parregulluar			20 kV	0	0	25	17	34	289	300	279	943
Zbatim i vendimit te ERE, Nr.19; 20; 21; 22, date 19.02.2024.			35 kV	0	0	3,172	0	0	0	0	0	3,172
Tot ne treg te lire	34			1,407	2,389	5,864	3,158	3,989	4,329	4,818	5,890	31,843
				4,833	6,961	11,092	9,511	10,839	11,705	12,803	13,499	81,243
"KARAVASTA SOLAR" sh.p.k ***	140	Centrali Fotovoltaik me vendndodhje në zonën e Remasit – Karavasta, Lushnjë dhe Libofshë, Fier	220 kV	9,699	15,016	20,684	26,190	32,218	31,845	32,168	29,151	196,972
"KESH" sh.a ***	5,143	Central Fotovoltaik i Digës së Qyrsaqit, Vau i Dejës	221 kV	368	450	561	717	756	805	885	637	5,179
	193											
												5,442,077

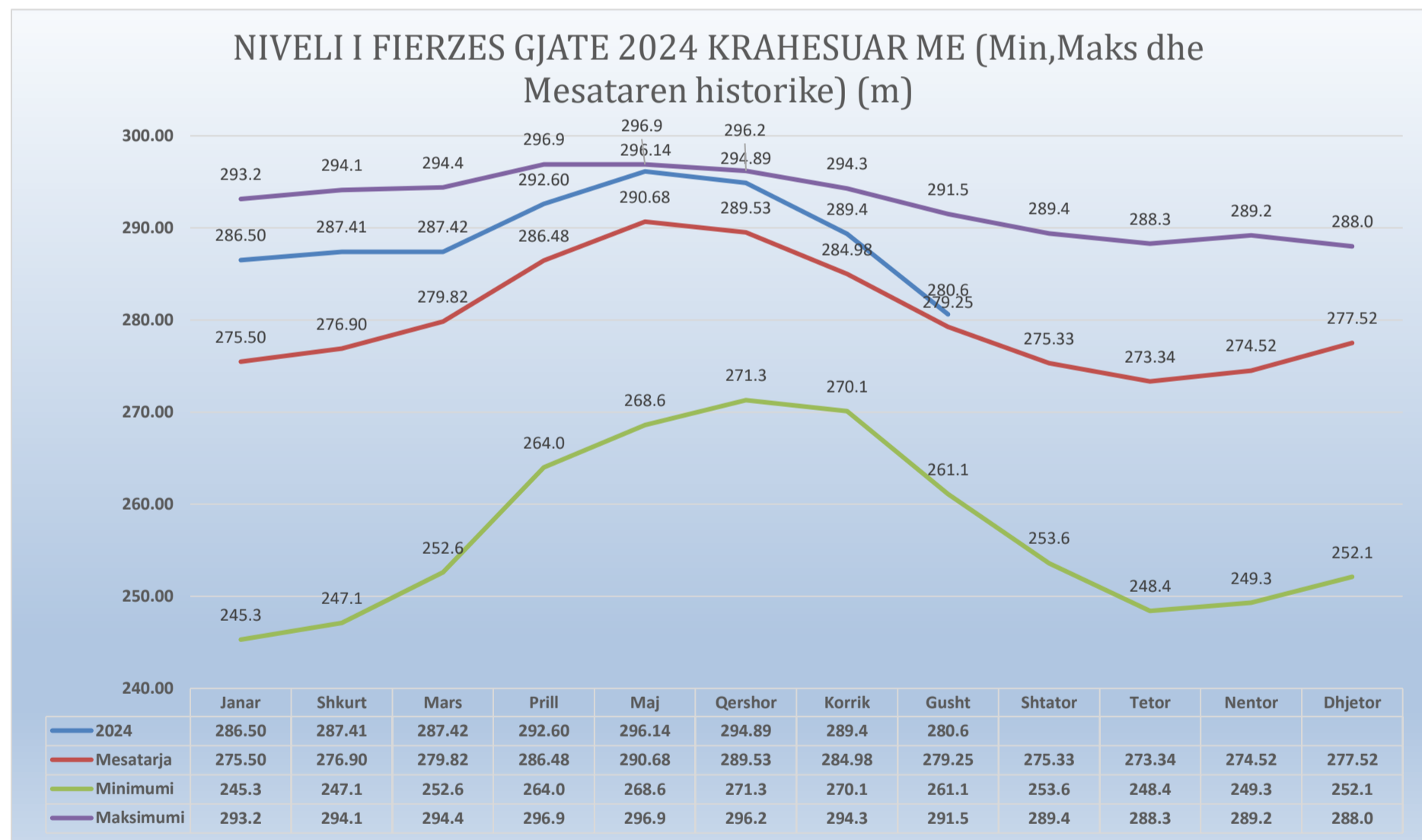
Kapaciteti Instaluar i gjithë prodhuesve në prodhim **2,815** MW

*** Përfshirë si sasi energjie në prodhimin neto të KESH sha, sipas kontaktës përkatëse

Burimi: OST sha; KESH sha; OSSH sha; FSHU sha; FTL sha; (OSHEE Group sha)

NIVELI I FIERZES 1991-2024												
	Janar	Shkurt	Mars	Prill	Maj	Qersh	Korrik	Gusht	Shtator	Tetor	Nentor	Dhjetor
1991	254.4	260.8	268.6	279.9	293.4	296.1	294.0	291.5	289.4	288.3	288.8	285.1
1992	278.0	274.1	268.0	278.8	281.0	279.6	275.2	268.7	263.9	271.4	281.9	280.6
1993	275.2	265.3	264.7	278.5	280.5	277.3	271.0	261.1	253.6	249.9	255.6	270.2
1994	254.4	260.8	268.6	279.9	293.4	296.1	294.0	291.5	289.4	288.3	288.8	285.1
1995	253.8	260.3	262.5	275.3	289.0	288.7	284.5	282.2	288.2	283.8	279.9	287.5
1996	287.1	288.7	286.5	294.7	295.8	293.1	287.6	282.2	285.1	284.3	289.2	291.3
1997	289.4	284.5	281.7	285.2	294.1	292.0	287.0	280.0	272.9	272.4	270.8	277.2
1998	273.7	270.0	265.2	278.9	288.1	287.4	281.8	277.6	276.0	277.1	279.0	277.1
1999	272.7	275.6	281.5	290.5	295.9	293.3	288.3	279.5	271.0	257.6	263.6	276.9
2000	276.4	276.7	276.8	286.9	286.6	280.1	273.5	267.5	261.6	248.4	249.3	252.1
2001	253.6	258.2	275.1	282.9	287.6	283.8	273.7	271.1	269.2	263.6	263.2	252.1
2002	245.3	247.1	252.6	264.0	268.6	271.3	270.1	267.8	274.3	286.1	285.3	284.0
2003	291.1	289.5	286.3	287.0	292.3	290.3	285.9	280.8	276.0	282.6	285.6	283.3
2004	284.7	290.8	293.4	296.0	296.2	296.2	293.1	286.3	281.1	280.0	286.1	288.0
2005	281.2	281.5	293.3	296.1	295.6	294.1	286.7	277.2	266.5	256.9	253.6	279.0
2006	283.5	288.6	294.4	295.9	296.5	295.9	293.8	290.2	285.3	278.7	266.2	256.2
2007	256.1	263.7	272.0	276.8	276.8	274.8	268.5	263.6	261.8	261.1	275.8	282.1
2008	285.1	289.7	290.9	295.5	295.3	295.7	294.3	288.6	283.9	280.9	285.2	286.5
2009	283.6	281.8	283.4	292.5	293.7	292.4	288.0	281.2	276.2	271.6	266.3	280.1
2010	290.1	289.2	293.9	296.0	296.3	294.4	291.8	288.6	284.9	285.2	284.3	287.5
2011	281.6	274.1	275.0	276.6	281.0	286.1	284.7	279.0	273.9	268.2	261.6	264.5
2012	265.8	274.1	262.0	280.2	293.4	294.4	288.4	280.4	261.4	261.6	269.0	276.6
2013	278.3	274.1	294.8	296.9	296.9	294.2	289.7	283.6	280.8	281.4	282.5	276.1
2014	275.1	274.1	274.6	285.3	292.9	294.9	291.7	286.8	285.5	285.0	284.8	286.3
2015	288.7	274.1	292.2	296.3	296.1	293.3	287.5	280.1	272.1	275.4	278.9	275.9
2016	289.9	274.1	291.8	296.5	296.2	295.6	290.5	285.4	283.3	288.4	288.9	281.6
2017	271.5	274.1	280.9	278.7	281.6	272.4	270.2	268.0	271.0	264.6	269.6	289.9
2018	289.7	274.1	295.0	296.5	296.4	296.0	294.0	287.5	277.9	270.2	266.5	267.3
2019	267.3	274.1	272.7	279.9	289.9	292.7	287.6	278.5	274.2	268.6	273.2	275.6
2020	271.6	272.0	283.5	288.6	293.6	291.7	284.6	276.5	273.5	274.1	268.7	272.7
2021	291.7	294.1	292.6	294.3	296.7	291.7	282.7	274.3	271.3	267.7	267.8	275.1
2022	270.7	268.3	260.7	282.5	289.0	288.0	281.5	270.4	271.4	267.9	281.7	291.7
2023	293.2	286.4	291.5	295.6	296.1	296.3	291.4	281.3	270.8	263.5	280.1	284.5
2024	286.5	287.4	287.4	292.6	296.1	294.9	289.4	280.6				

	Janar	Shkurt	Mars	Prill	Maj	Qersh	Korrik	Gusht	Shtator	Tetor	Nentor	Dhjetor
2024	286.50	287.41	287.42	292.60	296.14	294.89	289.4	280.6				
Mesatarja	275.50	276.90	279.82	286.48	290.68	289.53	284.98	279.25	275.33	273.34	274.52	277.52
Minimumi	245.3	247.1	252.6	264.0	268.6	271.3	270.1	261.1	253.6	248.4	249.3	252.1
Maksimumi	293.2	294.1	294.4	296.9	296.9	296.2	294.3	291.5	289.4	288.3	289.2	288.0

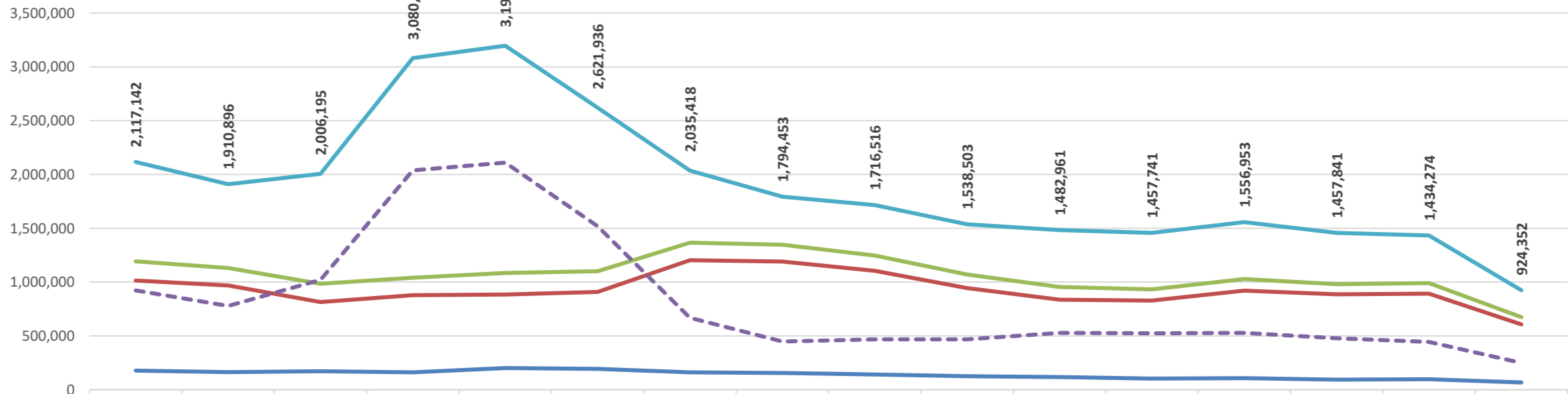


Burimi: KESH sha; OST sha

HUMBJET NE RRJETIN E SHPERNDARJES 2009-2024 MWh)

	2009	2010	2011	2012	2013	2014	2015	2016	2017	2018	2019	2020	2021	2022	2023	2024 (8-mujor)
HUMBJE TEKNIKE NE TL (N/ST)	178,738	163,546	170,937	161,831	201,684	193,208	162,725	155,629	141,707	125,974	117,739	103,729	107,340	93,331	98,166	67,748
HUMBJE TEKNIKE NE ZONAT E OSSH	1,015,450	968,535	814,826	879,616	884,360	908,416	1,203,793	1,190,872	1,106,007	944,587	836,561	828,906	921,330	886,682	892,334	607,159
TOTALI I HUMBJEVE TEKNIKE OSSH	1,194,188	1,132,081	985,763	1,041,447	1,086,044	1,101,624	1,366,518	1,346,501	1,247,714	1,070,560	954,300	932,635	1,028,670	980,013	990,500	674,907
HUMBJE JOTOKNIKE OSSH	922,954	778,815	1,020,432	2,039,227	2,110,575	1,520,312	668,900	447,952	468,802	467,943	528,661	525,106	528,283	477,828	443,774	249,445
TOTALI I HUMBJEVE OSSH	2,117,142	1,910,896	2,006,195	3,080,674	3,196,618	2,621,936	2,035,418	1,794,453	1,716,516	1,538,503	1,482,961	1,457,741	1,556,953	1,457,841	1,434,274	924,352

HUMBJET NE RRJETIN E SHPERNDARJES 2009-2024(MWh)



	2009	2010	2011	2012	2013	2014	2015	2016	2017	2018	2019	2020	2021	2022	2023	2024 (8-mujor)
HUMBJE TEKNIKE NE TL (N/ST)	178,738	163,546	170,937	161,831	201,684	193,208	162,725	155,629	141,707	125,974	117,739	103,729	107,340	93,331	98,166	67,748
HUMBJE TEKNIKE NE ZONAT E OSSH	1,015,450	968,535	814,826	879,616	884,360	908,416	1,203,793	1,190,872	1,106,007	944,587	836,561	828,906	921,330	886,682	892,334	607,159
TOTALI I HUMBJEVE TEKNIKE OSSH	1,194,188	1,132,081	985,763	1,041,447	1,086,044	1,101,624	1,366,518	1,346,501	1,247,714	1,070,560	954,300	932,635	1,028,670	980,013	990,500	674,907
HUMBJE JOTOKNIKE OSSH	922,954	778,815	1,020,432	2,039,227	2,110,575	1,520,312	668,900	447,952	468,802	467,943	528,661	525,106	528,283	477,828	443,774	249,445
TOTALI I HUMBJEVE OSSH	2,117,142	1,910,896	2,006,195	3,080,674	3,196,618	2,621,936	2,035,418	1,794,453	1,716,516	1,538,503	1,482,961	1,457,741	1,556,953	1,457,841	1,434,274	924,352

Burimi: OSSH sha / (OSHEE Group sha)

FATURIM-ARKETIMET DHE NDRYSHIMI I GJENDJES DEBITORE GJTE VITIT 2022 (000/LEKE)									
Viti 2022	Te arketueshme	Faturuar 2022	arketimi per faturat e 2022	Arketimi per faturat e 2007-2022	Arketimi total	Te Arketueshme per energjine e faturuar ne vitin 2022	Ndryshimi I gjendjes se Llogarive te arketueshme gjate vitit 2022	Shuarje Detyrimesh	
	78,394,397	2	5	7	6=5+7	9=(2-5)			
Janar	79,437,476	7,902,272	4,793,436	2,065,757	6,859,193	3,108,836	1,043,079	0	
Shkurt	80,288,829	7,515,728	4,569,541	2,094,835	6,664,376	2,946,187	851,353	0	
Mars	80,426,273	7,857,071	6,691,413	1,028,214	7,719,627	1,165,658	137,444	0	
Prill	79,617,380	6,186,945	6,531,117	464,721	6,995,838	344,172	808,893	0	
Maj	79,499,359	6,188,303	5,969,488	336,836	6,306,324	218,815	118,021	0	
Qershor	79,997,520	6,553,744	5,610,349	445,234	6,055,583	943,395	498,162	0	
Korrik	80,005,681	6,553,744	6,230,846	314,737	6,545,583	322,898	8,161	0	
Gusht	79,791,653	7,358,491	7,103,150	469,370	7,572,519	255,341	214,028	0	
Shtator	78,554,734	6,162,925	7,005,112	394,733	7,399,844	842,187	1,236,919	0	
Tetor	77,962,798	5,848,663	6,104,850	335,749	6,440,598	256,187	591,935	0	
Nentor	78,481,014	6,502,315	798,011	5,186,087	5,984,099	5,704,303	518,216	0	
Dhjetor	79,249,438	7,458,986	6,200,688	489,874	6,690,562	1,258,298	768,423	0	
Total		82,089,187			81,234,146				

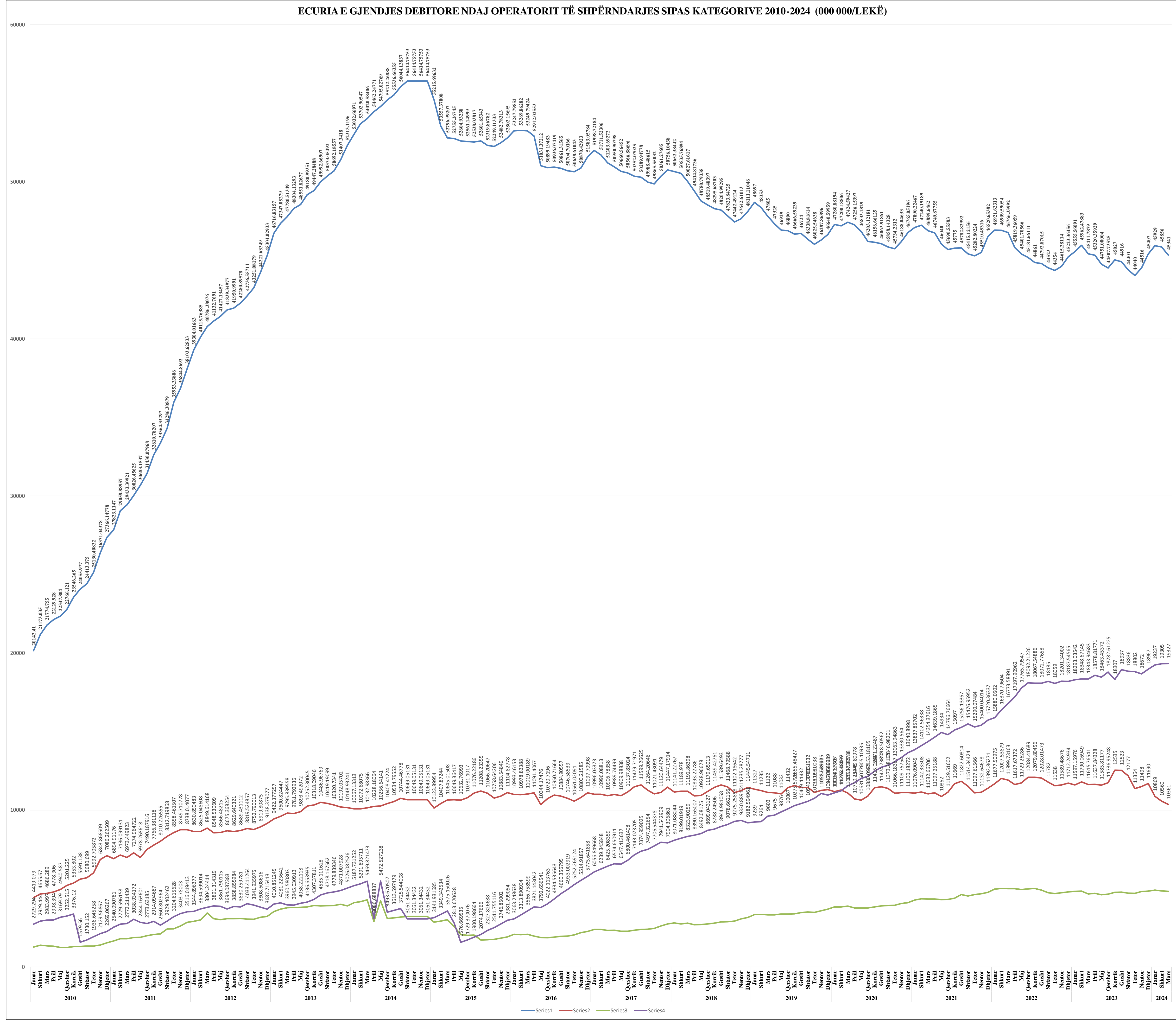
FATURIM-ARKETIMET DHE NDRYSHIMI I GJENDJES DEBITORE GJTE VITIT 2023 (000/LEKE)									
Viti 2023	Te arketueshme	Faturuar 2023	arketimi per faturat e 2023	Arketimi per faturat e 2007-2022	Arketimi total	Te Arketueshme per energjine e faturuar ne vitin 2022	Ndryshimi I gjendjes se Llogarive te arketueshme gjate vitit 2022	Shuarje Detyrimesh	
	79,910,252	2	5	7	6=5+7	9=(2-5)			
Janar	80,265,490	7,236,860	17,571	6,864,050	6,881,621	7,219,288	355,238	0	
Shkurt	80,928,747	7,477,014	4,674,206	2,139,553	6,813,758	2,802,809	663,256	0	
Mars	80,025,935	6,588,875	6,660,084	831,603	7,491,687	71,209	902,812	0	
Prill	80,223,225	6,321,511	5,757,211	367,010	6,124,221	564,300	197,290	0	
Maj	79,402,801	5,993,172	6,505,113	308,483	6,813,596	511,941	820,424	0	
Qershor	79,665,073	6,074,125	5,550,743	261,110	5,811,853	523,382	262,272	0	
Korrik	81,307,082	7,326,635	5,416,995	267,632	5,684,626	1,909,640	1,642,009	0	
Gusht	81,148,340	7,281,460	6,976,104	464,097	7,440,201	305,356	158,741	0	
Shtator	80,122,629	6,339,551	6,941,811	423,452	7,365,263	602,259	1,025,711	0	
Tetor	78,896,288	5,987,458	6,799,334	414,465	7,213,799	5,572,992	1,226,341	0	
Nentor	79,489,986	6,806,859	5,995,279	217,882	6,213,161	6,588,977	593,698	0	
Dhjetor	80,898,725	7,990,009	6,461,676	119,594	6,581,270	7,870,415	1,408,739	0	
Total		81,423,530			80,435,057				

FATURIM-ARKETIMET DHE NDRYSHIMI I GJENDJES DEBITORE GJTE VITIT 2024 (000/LEKE)									
Viti 2024	Te arketueshme	Faturuar 2024	arketimi per faturat e 2024	Arketimi per faturat e 2007-2022	Arketimi total	Te Arketueshme per energjine e faturuar ne vitin 2022	Ndryshimi I gjendjes se Llogarive te arketueshme gjate vitit 2022	Shuarje Detyrimesh	
	80,898,725	2	5	7	6=5+7	9=(2-5)			
Janar	80,868,782	7,374,630	43,814	7,300,873	7,344,687	7,330,816	29,943	0	
Shkurt	80,512,066	6,650,006	4,919,897	2,086,825	7,006,722	1,730,109	356,716	0	
Mars	79,792,096	6,078,325	5,882,823	915,472	6,798,295	195,502	719,970	0	
Prill	78,750,197	5,298,149	5,791,231	548,817	6,340,048	493,082	1,041,899	0	
Maj	78,164,922	5,291,466	5,330,756	545,985	5,876,740	39,290	585,274	0	
Qershor	78,955,726	5,903,682	4,859,817	253,061	5,112,878	1,043,865	790,804	0	
Korrik	79,959,320	7,200,506	5,762,477	434,435	6,196,912	1,438,029	1,003,594	0	
Gusht	80,757,168	7,524,914	6,460,912	266,154	6,727,066	1,064,002	797,848	0	
Shtator								0	
Tetor								0	
Nentor								0	
Dhjetor								0	
Total		51,321,678			51,403,348				

Burimi: OSSH sha; FSHU sha; FTL sha / OSHEE sha

ECURIA E GJENDJES DEBITORE NDAJ OPERATORIT TË SHPËRNDARJES SIPAS KATEGORIVE 2010-2024 (000 000/LEKË)

Indeksi	2010	2011	2012	2013	2014	2015	2016	2017	2018	2019	2020	2021	2022	2023	2024
Indeksi	100	100	100	100	100	100	100	100	100	100	100	100	100	100	100
2010	2329	2929	3292	3419	3419	3419	3419	3419	3419	3419	3419	3419	3419	3419	3419
2011	2929	3292	3419	3419	3419	3419	3419	3419	3419	3419	3419	3419	3419	3419	3419
2012	3292	3419	3419	3419	3419	3419	3419	3419	3419	3419	3419	3419	3419	3419	3419
2013	3419	3419	3419	3419	3419	3419	3419	3419	3419	3419	3419	3419	3419	3419	3419
2014	3419	3419	3419	3419	3419	3419	3419	3419	3419	3419	3419	3419	3419	3419	3419
2015	3419	3419	3419	3419	3419	3419	3419	3419	3419	3419	3419	3419	3419	3419	3419
2016	3419	3419	3419	3419	3419	3419	3419	3419	3419	3419	3419	3419	3419	3419	3419
2017	3419	3419	3419	3419	3419	3419	3419	3419	3419	3419	3419	3419	3419	3419	3419
2018	3419	3419	3419	3419	3419	3419	3419	3419	3419	3419	3419	3419	3419	3419	3419
2019	3419	3419	3419	3419	3419	3419	3419	3419	3419	3419	3419	3419	3419	3419	3419
2020	3419	3419	3419	3419	3419	3419	3419	3419	3419	3419	3419	3419	3419	3419	3419
2021	3419	3419	3419	3419	3419	3419	3419	3419	3419	3419	3419	3419	3419	3419	3419
2022	3419	3419	3419	3419	3419	3419	3419	3419	3419	3419	3419	3419	3419	3419	3419
2023	3419	3419	3419	3419	3419	3419	3419	3419	3419	3419	3419	3419	3419	3419	3419
2024	3419	3419	3419	3419	3419	3419	3419	3419	3419	3419	3419	3419	3419	3419	3419

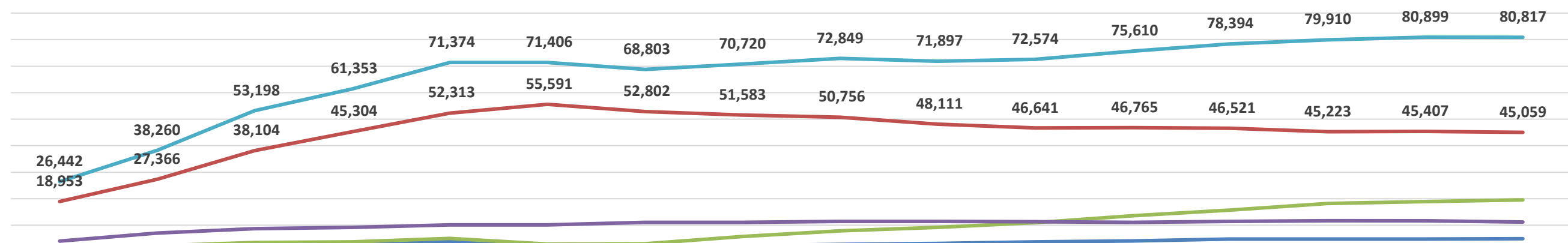


ECURIA E GJENDJES DEBITORE NDAJ OPERATORIT TË SHPËRNDARJES SIPAS KATEGORIVE 2010-2024 (000 000/LEKË)

Burimi: ESHU dhe GJISEZ Group sh.p.k

	31.12.2009	31.12.2010	31.12.2011	31.12.2012	31.12.2013	31.12.2014	31.12.2015	31.12.2016	31.12.2017	31.12.2018	31.12.2019	31.12.2020	31.12.2021	31.12.2022	31.12.2023	31.08.2024
Buxhetore	988	1,538	2,841	3,223	3,886	2,691	1,915	2,264	2,741	3,157	3,681	4,104	4,761	4,787	4,835	4,930
Familjare	18,953	27,366	38,104	45,304	52,313	55,591	52,802	51,583	50,756	48,111	46,641	46,765	46,521	45,223	45,407	45,059
JoBuxhetore	2,468	2,269	3,516	3,688	5,026	2,964	2,981	5,776	7,904	9,183	10,947	13,641	15,720	18,188	18,967	19,564
Privat	4,033	7,086	8,738	9,138	10,149	10,161	11,105	11,098	11,447	11,446	11,304	11,100	11,393	11,712	11,690	11,264
Total	26,442	38,260	53,198	61,353	71,374	71,406	68,803	70,720	72,849	71,897	72,574	75,610	78,394	79,910	80,899	80,817

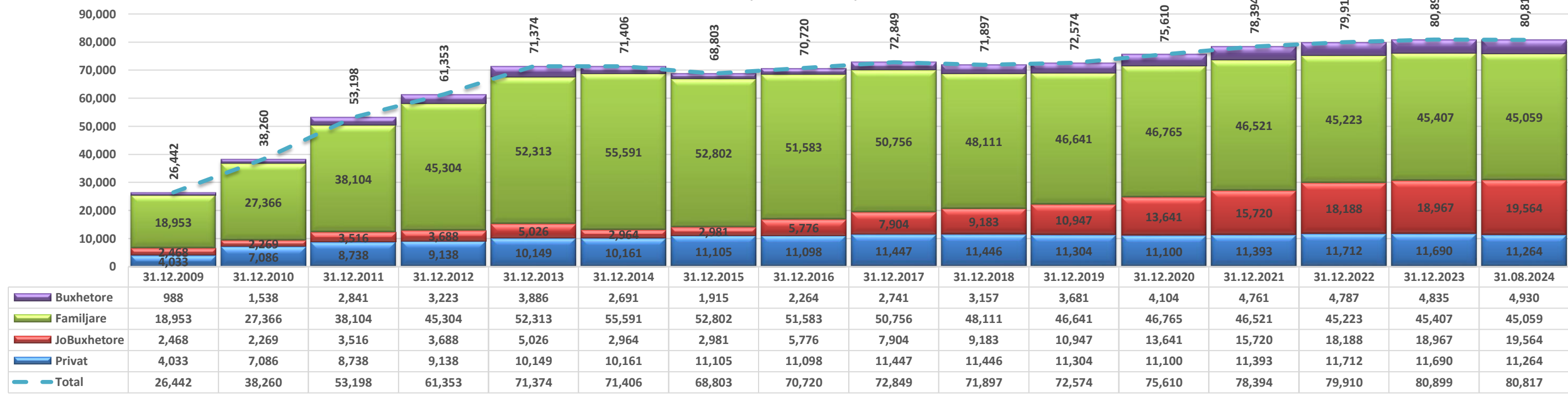
**ECURIA E GJËNDJES DEBITORE NDAJ OPERATORIT TË SHPËRNDARJES
31 DHJETOR 2009 - 31 Gusht 2024 SIPAS KLIENTËVE
(000 000 LEKË)**



	31.12.2009	31.12.2010	31.12.2011	31.12.2012	31.12.2013	31.12.2014	31.12.2015	31.12.2016	31.12.2017	31.12.2018	31.12.2019	31.12.2020	31.12.2021	31.12.2022	31.12.2023	31.08.2024
Buxhetore	988	1,538	2,841	3,223	3,886	2,691	1,915	2,264	2,741	3,157	3,681	4,104	4,761	4,787	4,835	4,930
Familjare	18,953	27,366	38,104	45,304	52,313	55,591	52,802	51,583	50,756	48,111	46,641	46,765	46,521	45,223	45,407	45,059
JoBuxhetore	2,468	2,269	3,516	3,688	5,026	2,964	2,981	5,776	7,904	9,183	10,947	13,641	15,720	18,188	18,967	19,564
Privat	4,033	7,086	8,738	9,138	10,149	10,161	11,105	11,098	11,447	11,446	11,304	11,100	11,393	11,712	11,690	11,264
Total	26,442	38,260	53,198	61,353	71,374	71,406	68,803	70,720	72,849	71,897	72,574	75,610	78,394	79,910	80,899	80,817

	31.12.2009	31.12.2010	31.12.2011	31.12.2012	31.12.2013	31.12.2014	31.12.2015	31.12.2016	31.12.2017	31.12.2018	31.12.2019	31.12.2020	31.12.2021	31.12.2022	31.12.2023	31.08.2024
Privat	4,033	7,086	8,738	9,138	10,149	10,161	11,105	11,098	11,447	11,446	11,304	11,100	11,393	11,712	11,690	11,264
JoBuxhetore	2,468	2,269	3,516	3,688	5,026	2,964	2,981	5,776	7,904	9,183	10,947	13,641	15,720	18,188	18,967	19,564
Familjare	18,953	27,366	38,104	45,304	52,313	55,591	52,802	51,583	50,756	48,111	46,641	46,765	46,521	45,223	45,407	45,059
Buxhetore	988	1,538	2,841	3,223	3,886	2,691	1,915	2,264	2,741	3,157	3,681	4,104	4,761	4,787	4,835	4,930
Total	26,442	38,260	53,198	61,353	71,374	71,406	68,803	70,720	72,849	71,897	72,574	75,610	78,394	79,910	80,899	80,817

**ECURIA E GJËNDJES DEBITORE NDAJ OPERATORIT TË SHPËRNDARJES
31 DHJETOR 2009 - 31 QERSHOR 2024 SIPAS KLIENTËVE
(000 000 LEKË)**



Burimi: FSHU sha / (OSHEE Group sha)

NIVELI I HUMBJEVE (%) 2009-2024												
	Janar	Shkurt	Mars	Prill	Maj	Qershor	Korrik	Gusht	Shtator	Tetor	Nentor	Dhjetor
2009	40.75	37.05	38.05	32.93	33.44	30.75	32.60	30.20	25.34	30.67	33.44	36.89
2010	38.62	35.41	36.90	31.37	35.17	31.45	26.94	29.69	21.47	20.61	22.16	29.05
2011	55.55	38.00	36.95	23.11	24.85	21.29	21.88	19.41	22.95	25.15	32.20	35.70
2012	35.72	59.16	55.23	45.41	38.87	39.77	45.51	45.51	42.09	35.53	41.89	49.32
2013	51.12	48.71	48.29	39.66	39.52	40.33	43.33	38.50	35.08	45.98	48.08	53.04
2014	47.00	42.14	42.78	35.69	36.85	34.10	36.59	36.36	31.67	34.52	32.88	37.54
2015	36.68	31.82	32.88	30.54	31.24	28.60	30.62	29.29	25.30	29.92	30.82	34.50
2016	34.69	29.00	29.93	26.07	26.97	24.35	25.97	25.15	22.12	27.11	29.30	30.99
2017	33.50	27.63	28.66	25.81	25.88	28.31	24.69	23.29	19.79	23.76	23.55	27.90
2018	30.65	24.91	27.22	23.33	23.03	20.76	21.46	20.77	19.32	21.53	22.73	26.70
2019	29.25	23.21	26.5	21.36	22.10	19.92	20.42	19.81	17.54	20.40	21.58	24.76
2020	28.22	21.61	28.36	17.39	19.10	18.65	19.69	18.87	16.80	21.21	22.79	20.49
2021	27.87	20.1	25.92	21.08	17.92	18.34	18.75	17.93	16.22	18.56	19.88	20.25
2022	28.42	19.66	23.68	18.24	17.08	17.30	18.42	16.81	14.94	18.36	18.38	19.76
2023	25.79	19.06	21.05	18.65	16.68	16.04	17.48	16.17	14.80	17.62	18.20	21.52
2024	21.28	16.80	19.38	16.67	15.94	16.06	17.64	15.11				

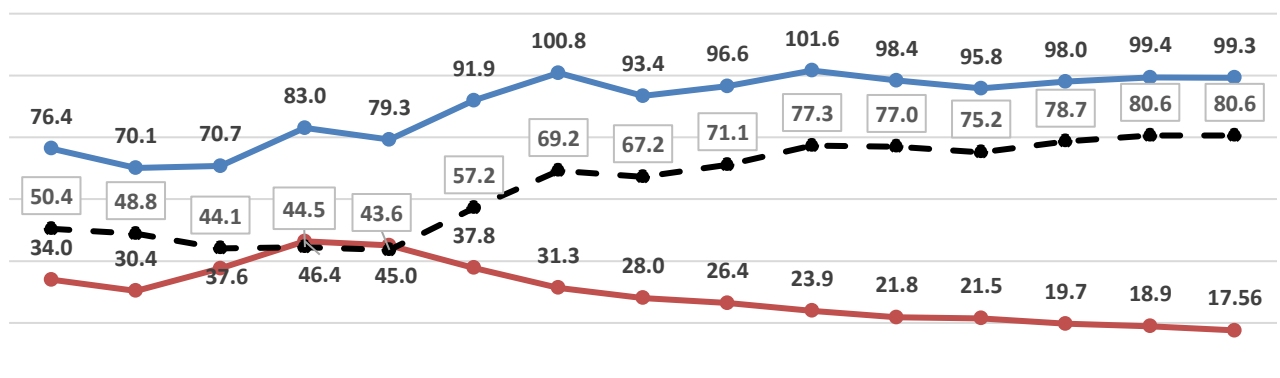
Niveli i Arketimeve (%) 2009-2024												
	Janar	Shkurt	Mars	Prill	Maj	Qershor	Korrik	Gusht	Shtator	Tetor	Nentor	Dhjetor
2009	69.32	85.95	74.38	86.58	86.31	76.37	75.40	72.46	83.20	80.82	61.77	70.01
2010	55.37	66.28	86.63	89.46	86.70	79.42	74.84	124.98	84.20	70.81	56.15	66.48
2011	67.26	57.61	87.66	71.61	96.73	73.00	65.00	81.00	66.00	63.86	51.47	87.30
2012	59.80	79.20	78.50	78.00	94.70	83.50	91.60	102.90	74.00	98.00	72.60	78.00
2013	61.40	63.70	86.20	80.70	79.10	69.60	87.90	90.10	78.50	84.30	89.00	102.00
2014	84.90	77.10	85.90	85.50	81.90	80.20	86.70	83.60	102.60	101.00	101.90	141.00
2015	112.70	120.50	103.70	86.60	95.70	97.10	98.40	104.70	95.30	100.30	92.20	100.70
2016	92.10	87.00	95.60	90.10	99.10	92.00	94.20	96.70	91.50	96.70	90.30	96.70
2017	85.20	87.60	105.70	94.50	105.70	91.80	104.80	97.40	94.60	103.80	92.70	100.10
2018	96.39	95.69	105.82	98.92	111.64	100.16	105.00	102.12	93.03	108.76	96.24	108.94
2019	90.7	92.6	99.8	102.4	102.50	94.00	104.40	99.30	93.90	104.70	89.60	110.70
2020	91.4	91.6	77.5	106.8	101.80	102.20	96.80	95.30	96.60	101.10	91.50	101.80
2021	86.4	88.9	102.1	91	101.20	110.70	96.90	94.10	90.70	114.70	96.90	101.50
2022	90.6	84.3	102.7	90.5	98.00	97.90	99.90	105.00	100.60	104.50	102.30	102.90
2023	92.3	94.2	100.2	92.9	113.7	95.70	93.60	101.60	101.20	113.80	103.80	96.70
2024	92	95	101.2	104.3	110.9	96.60	105.00	93.40				

Efektiviteti i shitjeve (%) 2009-2024												
	Janar	Shkurt	Mars	Prill	Maj	Qershor	Korrik	Gusht	Shtator	Tetor	Nentor	Dhjetor
2009	41.1%	46.8%	53.6%	57.9%	50.8%	52.2%	48.8%	50.6%	62.1%	56.0%	41.1%	44.2%
2010	34.0%	56.0%	56.4%	59.5%	51.5%	51.3%	91.3%	87.9%	66.1%	56.2%	43.7%	47.2%
2011	29.9%	54.3%	45.2%	74.4%	54.9%	51.2%	63.3%	65.3%	50.9%	47.8%	34.9%	56.1%
2012	38.4%	32.1%	34.9%	51.7%	51.0%	55.2%	56.1%	56.1%	42.9%	63.2%	42.2%	39.5%
2013	30.0%	44.2%	41.7%	47.7%	42.1%	52.4%	51.1%	55.4%	51.0%	45.5%	46.2%	47.9%
2014	45.0%	49.7%	48.9%	52.7%	50.6%	57.1%	53.0%	53.2%	70.1%	66.1%	68.4%	88.1%
2015	71.4%	69.6%	60.2%	65.8%	69.3%	68.3%	72.6%	74.0%	71.2%	70.3%	63.8%	66.0%
2016	60.2%	67.0%	66.6%	72.4%	69.6%	69.7%	71.6%	72.4%	71.3%	70.5%	63.8%	66.7%
2017	56.7%	75.4%	70.1%	78.3%	65.8%	78.9%	73.4%	74.7%	75.9%	79.1%	70.9%	72.2%
2018	66.8%	77.0%	75.8%	85.9%	79.4%	82.5%	80.2%	80.9%	75.1%	85.3%	74.4%	79.9%
2019	64.2%	73.4%	80.5%	79.8%	75.3%	83.1%	79.0%	79.6%	77.4%	83.3%	70.3%	83.3%
2020	65.6%	55.5%	88.2%	82.4%	83.1%	77.7%	76.5%	77.3%	80.4%	79.7%	70.6%	80.9%
2021	62.3%	75.6%	71.8%	83.1%	90.4%	78.7%	76.5%	77.2%	76.0%	93.4%	77.6%	80.9%
2022	64.9%	78.4%	74.0%	81.3%	81.0%	81.5%	85.7%	87.3%	85.6%	85.3%	83.5%	82.6%
2023	68.5%	76.2%	79.1%	75.6%	94.7%	80.3%	77.2%	85.2%	86.2%	93.7%	84.9%	75.9%
2024	72.4%	79.0%	81.6%	86.9%	93.2%	81.1%	86.5%	79.3%	0.0%	0.0%	0.0%	0.0%

	2009	2010	2011	2012	2013	2014	2015	2016	2017	2018	2019	2020	2022	2023	2024
Arketimi	76.4	70.1	70.7	83.0	79.3	91.9	100.8	93.4	96.6	101.6	98.4	95.8	98.0	99.4	99.3
Humbja	34.0	30.4	37.6	46.4	45.0	37.8	31.3	28.0	26.4	23.9	21.8	21.5	19.7	18.9	17.56
Efektiviteti	50.4	48.8	44.1	44.5	43.6	57.2	69.2	67.2	71.1	77.3	77.0	75.2	78.7	80.6	80.6

Efektiviteti i shitjeve ne Sistemin e Shperndarjes (%) 2009-2024

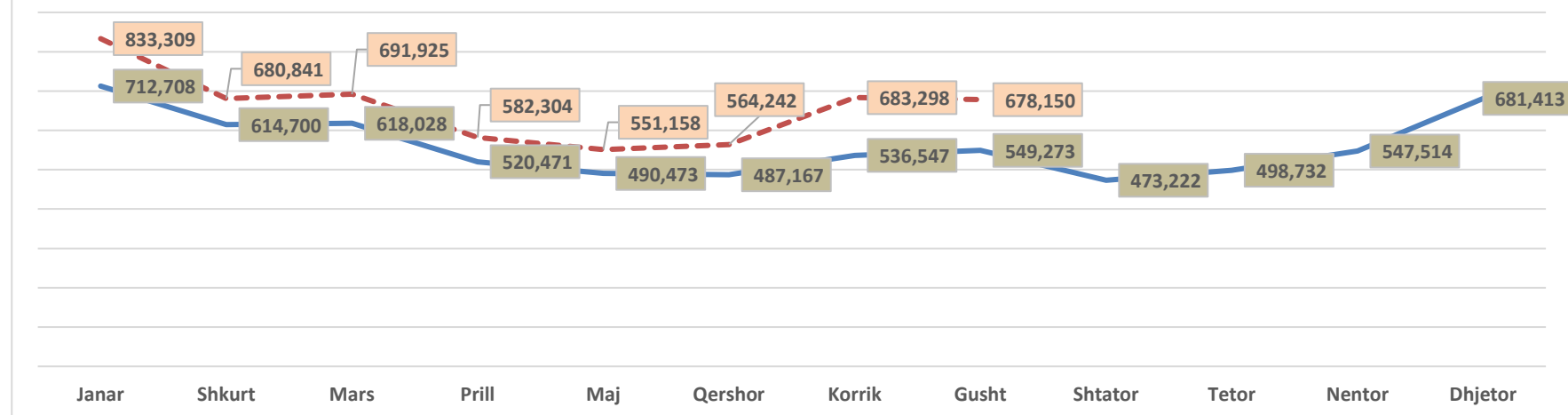
● Arketimi
● Humbja



	Janar	Shkurt	Mars	Prill	Maj	Qershor	Korrik	Gusht	Shtator	Tetor	Nentor	Dhjetor	VITI
2009	644,987	568,719	589,279	462,709	448,118	427,694	467,863	493,772	439,604	489,635	557,554	639,797	6,229,731
2010	675,343	608,940	610,583	506,275	476,500	464,120	499,241	512,024	460,893	509,793	532,126	660,665	6,516,503
2011	708,264	623,208	634,087	536,286	533,564	495,139	545,315	567,282	512,979	551,132	619,655	710,870	7,037,781
2012	733,973	680,054	596,982	537,950	483,891	489,723	536,891	540,566	469,527	484,706	548,289	749,398	6,851,949
2013	743,846	665,392	673,578	545,600	502,945	511,390	546,696	565,789	493,056	532,555	589,808	774,403	7,145,060
2014	733,468	631,678	645,837	578,948	541,016	501,088	530,554	556,098	492,427	537,280	546,419	640,431	6,935,244
2015	686,041	591,978	594,775	514,282	472,405	465,730	536,160	529,208	459,012	476,969	519,281	649,026	6,494,867
2016	671,884	559,772	573,419	469,803	477,468	463,248	509,916	514,034	451,153	480,236	540,024	688,760	6,399,717
2017	715,886	562,270	545,214	493,731	475,055	485,386	529,805	543,145	451,103	482,629	546,256	667,841	6,498,322
2018	659,778	590,823	597,595	468,417	467,468	468,885	508,892	539,134	465,468	471,407	517,882	681,162	6,436,911
2019	735,813	586,992	559,331	500,485	501,061	500,729	533,842	565,788	471,684	472,833	507,920	639,953	6,576,432
2020	708,611	607,803	589,581	489,236	464,183	463,789	527,801	533,336	482,358	506,280	562,127	669,977	6,605,082
2021	724,554	629,962	662,183	590,810	504,970	519,563	591,485	603,872	485,288	523,606	552,840	747,790	7,136,936
2022	774,084	656,456	698,991	556,264	504,224	525,509	591,875	587,527	481,886	480,961	536,263	650,564	7,044,604
2023	774,084	656,456	698,991	556,264	504,224	525,509	591,875	587,527	481,886	480,961	536,263	650,564	7,044,604
2024	833,309	680,841	691,925	582,304	551,158	564,242	683,298	678,150					

	Janar	Shkurt	Mars	Prill	Maj	Qershor	Korrik	Gusht	Shtator	Tetor	Nentor	Dhjetor
Mesatarja	712,708	614,700	618,028	520,471	490,473	487,167	536,547	549,273	473,222	498,732	547,514	681,413
2024	833,309	680,841	691,925	582,304	551,158	564,242	683,298	678,150				

MESATARJA 14 VJEÇARE E ENERGJISË TOTALE NË RRJETIN E SHPËRNDARJES SIPAS MUAJVE TË VITIT (MWh) KRAHASUAR ME VITIN 2024



Alokimi i Kapaciteteve në interkoniksion 2024

Ankandi																					
	Ankandi	Ankandi	Periudha	Shqiperi - Mali Zi						Shqiperi - Greqi						Shqiperi - Kosove					
				ATC e ofruar ne Ankand		ATC e shitur ne Ankand		Cmimi Ankandit		ATC e ofruar ne Ankand		ATC e shitur ne Ankand		Cmimi Ankandit		ATC e ofruar ne Ankand		ATC e shitur ne Ankand		Cmimi Ankandit	
				Export	Import	Export	Import	Export	Import	Export	Import	Export	Import	Export	Import	Export	Import	Export	Import	Export	Import
[MW]	[MW]	[MW]	[MW]	[Euro/MWh]	[Euro/MWh]	[MW]	[MW]	[MW]	[MW]	[MW]	[MW]	[Euro/MWh]	[Euro/MWh]	[MW]	[MW]	[MW]	[MW]	[Euro/MWh]	[Euro/MWh]		
Mars	Janar	Janar	1.2024-31.01.24	100	100	100	100	2.21	0.94	200	100	200	100	3.5	1	200	200	200	200	0.70	0.35
Prill	Shkurt	Shkurt	2.2024-29.02.24	100	100	100	100	0.92	0.6	200	100	200	99	2.46	0.53	200	200	200	200	0.37	0.17
	Mars	Mars	3.2024-31.03.24	100	100	100	100	1.01	0.51	200	150	200	150	3.99	0.35	150	150	149	150	0.51	0.38
	Prill	Prill	4.2024-30.04.24	100	100	100	100	1.81	0.86	200	200	200	200	2.88	0.44	150	150	150	150	0.47	0.23
	Maj	Maj	5.2024-31.05.24	100	100	100	100	2.37	0.86	50	50	50	50	4.07	1.88	0	40	0	40	0	0.33
	Qershor	Qershor	6.2024-30.06.24	50	50	50	50	3.99	1	50	50	50	50	4.61	1.54	0	0	0	0	0	0
		Korrik	Korrik	7.2024-31.07.24	0	0	0	0	0	0	50	50	50	50	3.2	1.65	0	0	0	0	0
	Gusht	Gusht	8.2024-31.08.24	0	0	0	0	0	0	50	50	50	50	3.74	4.5	0	0	0	0	0	0
																		<i>Burimi: OST sha</i>			

Disbalancat mujore [MWh] 2024 (8-MUJORI)

Pale Përgjegjese Balancuese	JANAR		SHKURT		MARS		PRILL		MAJ		QERSHOR		KORRIK		GUSHT		TOTALI 2024	
	Dis. Negjative [MWh]	Dis. Pozitive [MWh]	Dis. Negjative [MWh]	Dis. Pozitive [MWh]	Dis. Negjative [MWh]	Dis. Pozitive [MWh]	Dis. Negjative [MWh]	Dis. Pozitive [MWh]	Dis. Negjative [MWh]	Dis. Pozitive [MWh]	Dis. Negjative [MWh]	Dis. Pozitive [MWh]	Dis. Negjative [MWh]	Dis. Pozitive [MWh]	Dis. Negjative [MWh]	Dis. Pozitive [MWh]	Dis. Negjative [MWh]	Dis. Pozitive [MWh]
ALB Energy Trade							5	57	57	137	97	173	85	140	59	119	303	627
AINEA Trading																		
AYEN AS ENERGI sh.a	67	111	159	48	139	91	97	151	80	242	150	34	106	17	104	14	903	709
Danske Commodities ne prog	14	70	4	2	13	14	7	7	9	30	9	8	11	10	17	13	84	160
DEVOLL HYDROPOWER sh.a	230	69	153	49	65	42	139	47	160	33	45	28	33	27	55	23	919	318
Devoll Hydropower ne prog															540			0
DRAGONIA ENERGY sh.a	3	100	6	97	21	353	22	181	44	145	34	47	10	50	0	5	142	979
DRAGONIA ENERGY sh.a ne prog																		0
ENER TRADE shpk	1,144	303	1,003	217	266	288	780	457	729	268	907	439	509	441	642	450	5,980	2,862
EZ-S ENERGY shpk (DURRES)	186	145	192	187	409	212	569	176	520	209	857	90	812	221	455	157	4,001	1,397
FUTURE ENERGY	999	197	774	72	687	222	857	328	1,317	359	2,270	211	1,087	559	658	314	8,649	2,262
FUTURE ENERGY ne prog	4	0																0
Furnizuesi I Tregut të Lirë FTL (OSHEE Grup)	6,223	30,230	2,907	22,413	6,805	21,127	6,158	16,905	3,286	16,476	5,851	16,406	3,029	16,505	4,471	15,180	39,627	155,243
GENE ne prog	-1	1									100		8	10	7		115	21
GSA shpk	1,003	686	325	255	821	370	1,004	2,342	3,756	183	2,914	564	3,325	92	2,343	106	15,491	4,581
KESH (Pale Përgjegjese Balancuese)	2,355	3,267	2,030	3,256	1,992	6,106	1,478	9,304	4,272	10,313	3,043	5,995	3,519	959	3,046	1,440	21,735	40,642
KURUM INTERNATIONAL sh.a	700	21	288	158	1,140	585	1,521	591	1,583	310	1,472	557	1,218	563	734	25	8,656	2,809
NDA						300	74	354	95	282	33	380	31	208	51		1,455	286
OST - HUMBLET	2,156	1,281	838	2,864	3,032	1,806	4,112	964	1,929	1,726	2,390	740	5,380	466	7,225	31	27,062	9,877
KOSTT	2,818	10,778	2,952	8,510	5,442	7,496											11,212	26,783
Renery ne program					0	2	0	1									0	0
SPV Blue 1									326	558	975	1,249	483	626	653	841	2,438	3,273
Ofruesi i Sherbimit te Balancimit	Rrije Gjenerimi [MWh]	Ujje Gjenerimi [MWh]	Rrije Gjenerimi [MWh]	Ujje Gjenerimi [MWh]	Rrije Gjenerimi [MWh]	Ujje Gjenerimi [MWh]	Rrije Gjenerimi [MWh]	Ujje Gjenerimi [MWh]	Rrije Gjenerimi [MWh]	Ujje Gjenerimi [MWh]	Rrije Gjenerimi [MWh]	Ujje Gjenerimi [MWh]	Rrije Gjenerimi [MWh]	Ujje Gjenerimi [MWh]	Rrije Gjenerimi [MWh]	Ujje Gjenerimi [MWh]	Rrije Gjenerimi [MWh]	Ujje Gjenerimi [MWh]
Devoll HP Energia Akt	468		572		1,973				2,480		698		243		378		7,210	0
Devoll HP Energia Shtese Akt								1,804									1,804	0
KURUM INTERNATIONAL Energia Akt																	0	0
Ayen AS Energi Energia Akt																	0	0
Ayen AS Energi Energia Shtese Akt																	0	0
KESH sh.a. Energia Akt	13,047	2,089	10,855	1,819	6,168	3,499	5,984	2,015	7,401	4,657	6,405	6,543	7,566	6,512	7,742	6,049	65,166	33,184
KESH sh.a. Energia Shtese Akt	10,966	2,871	13,553	1,316	11,577	2,835	6,399	3,082	8,950	1,161	6,823	5,509	5,372	6,237	5,372	4,509	68,971	27,555
Disbalancat mujore [MWh]	42,408	52,201	37,045	41,262	40,500	45,049	31,267	36,685	37,163	36,892	35,321	38,679	34,081	33,472	34,880	29,627	292,664	313,867
		9,793		4,217		4,540		5,418		271		3,358		-609		-5,253		21,053

Burimi: OSHEE

KLIENTET NE TL	KLIENTET E "KUALIFIKUAR" PER VITIN 2024								
	Energjia e faturuar ne [MWh]								
	Janar	Shkurt	Mars	Prill	Maj	Qershor	Korrik	Gusht	2024
EL220-L220KURUM/337	4,874	4,501	23,996	24,673	23,275	25,737	24,397	1,319	132,773
F.ARRES-T3/653	0	-	-	1,465	1,528	1,473	1,478	1,648	7,592
Titan T1,T2	9,588	9,037	4,561	8,997	10,364	10,143	10,428	7,767	70,885
FUSHE KRUIJE 220kV-T2/058	5,383	707	2,988	9,172	10,809	9,629	5,599	4,064	48,352
N/ST 220/6,3Colacent-T1/336	145.3	1,023	1,734	1,746	2,181	593	1,492	1,131	10,046
N/ST i GSA EL 110kV-T1/694	8,956	8,466	8,959	2,772	162	161	7,282	8,432	45,190
N/ST i GSA EL 110kV-T2/960	-	-	-	-	-	-	-	-	-
N/ST I CWI Albania T1/148	466	395	531	417	572	557	562	396	3,896
N/ST i AES EL 110kV-T1/690	159	22	-	2,414	7,298	7,073	7,277	7,122	31,364
N/ST I AES EL 110kV-T2/692	-	118	147	60	2	-	-	-	327
HEC Moglice T1,T2,T3	1.4	1	1	1	1	7	1	-	13
HEC Peshqesh-T1/633	0.9	9	5	5	6	25	38	38	127
Nova Solar							4	27	31
Spv Blue 1 T1/139	-	-	-	-	4	14	19	21	58
Lajthiza T1/742	14.4	22	17	27	21	228	440	619	1,389
HEC Ashta1-T1,HEC Ashta2-T1,	-	-	0.11	-	-	0.19	-	-	0
HEC Banje T1,T2	10.8	12	20	19	19	21	15	15	132
HEC Fang-T1,T2.	1.300	35	48	25	22	23	45	44	243
Gjenerim KURUM	1.296	5	16	9	10	19	18	17	94
FERRO KROM-F1,F2,F3,F4	6,953	6,896	7,392	7,013	7,223	6,789	6,634	56	48,956
TOTAL	36,554	31,249	50,416	58,815	63,497	62,491	65,729	32,716	401,467

Burimi: OST sha

Devijimet nga programi interkoneksionit 2024 (8-mujori)

<i>Minus = Hyrje</i>	<i>Plus = Dalje</i>									
<i>Data</i>	Janar	Shkurt	Mars	Prill	Maj	Qershor	Korrik	Gusht	2024	
1	411	-16	394	394	55	111	-112	88	1,325	
2	462	144	428	428	257	2	-97	228	1,852	
3	-120	293	139	139	850	-41	481	219	1,960	
4	545	378	-250	-117	429	373	54	71	1,483	
5	375	411	233	363	962	207	142	151	2,844	
6	309	49	43	326	18	186	-53	70	948	
7	739	185	51	592	-73	-83	102	39	1,552	
8	207	-237	24	468	15	-182	-102	-3	190	
9	121	354	-267	-9	136	-411	-172	-47	-295	
10	-5	46	401	605	163	-209	-209	68	860	
11	311	395	126	532	130	4	42	-78	1,462	
12	183	910	287	242	-922	49	-49	-179	521	
13	-117	217	364	-132	1159	-129	110	-272	1,200	
14	61	-41	162	352	50	423	241	-128	1,120	
15	65	128	15	131	41	101	-40	-34	407	
16	1299	-59	13	-177	-30	308	24	-135	1,243	
17	439	-168	0	99	162	-326	-155	16	67	
18	1474	-12	106	101	127	-232	-59	200	1,705	
19	1294	-47	-261	-515	416	-140	226	227	1,200	
20	652	-115	-173	-92	154	-147	214	427	920	
21	463	70	77	-444	88	1077	541	195	2,067	
22	148	228	118	542	239	400	148	-385	1,438	
23	-388	-73	365	129	370	217	44	-63	601	
24	-2	-306	-5	1195	-301	79	272	1	933	
25	154	383	165	1387	385	254	291	123	3,142	
26	265	649	-248	865	764	264	309	-43	2,825	
27	67	23	574	639	207	556	357	376	2,799	
28	282	174	930	414	368	499	189	-143	2,713	
29	110	255	-432	298	332	410	60	198	1,231	
30	-4		-135	670	110	175	102	293	1,211	
31	-61		153		116		238	166	612	
Total	9,739	4,218	3,397	9,425	6,778	3,795	3012	1643	42,007	

Burimi: OST sha

1	ALB ENERGY TRADE	Border	AL-GR Greece - OUT								0	0	0	
			AL-KS Kosovo - OUT									0	0	0
			AL-ME Monte Negro - OUT									478	6,654	7,132
			Total OUT	0	0	0	0	0	0	0	0	478	6,654	7,132
26	KESH sh.a.	Shkembime Cross-Border	AL-GR Greece - IN			-80	0	0	-108	0	-2,520	-2,708		
			AL-KS Kosovo - IN	-750	-6,731	-12,880	-2,645	0	-11,113	-32,539	-39,352	-106,010		
			AL-ME Monte Negro - IN	0	0	-2,816	-3,320	-546	-7,902	-25,222	-23,480	-63,286		
			Total IN	-750	-6,731	-15,776	-5,965	-546	-19,123	-57,761	-65,352	-172,004		
26	KESH sh.a.	Shkembime Cross-Border	AL-GR Greece - OUT	0	0	0	0	250	0	0	0	250		
			AL-KS Kosovo - OUT	6,320	0	0	225	3,670	0	0	0	10,215		
			AL-ME Monte Negro - OUT	0	0	0	850	1,750	0	0	0	2,600		
			Total OUT	6,320	0	0	1,075	5,670	0	0	0	13,065		
26	KESH sh.a.	Transaksionet e brendshme	Shtije FTL	403,231	406,089	285,892	199,754	229,570	426,164	581,909	592,804	3,125,413		
			Blerje Ayen Energy Trading			-88			-9,900	-3,600	-13,200	-26,788		
			Shtije Ayen Energy Trading				750					750		
			Blerje Danske Commodities			-2,008	-9,900		-8,400	-3,960	-12,000	-36,268		
26	KESH sh.a.	Transaksionet e brendshme	Shtije Danske Commodities			2,740	4,500	13,160				20,400		
			Blerje GSA				-4,410		-1,530	-10,440	-9,620	-26,000		
			Shtije GSA				1,950		3,900			5,850		
			Blerje ReNRGY			-112			-882	-2,108	-3,150	-6,252		
26	KESH sh.a.	Transaksionet e brendshme	Shtije ReNRGY				1,075	1,000				2,075		
			Blerje GEN-I			-1,840	-2,814	-1,680	-9,750	-7,500	-10,930	-34,514		
			Shtije GEN-I			1,900	9,590	12,680		400		24,570		
			Blerje Tirana International Development									0		
26	KESH sh.a.	Transaksionet e brendshme	Shtije Tirana International Development									0		
			Shtije EZ-5 ENERGY			160							160	
			Blerje NOA ENERGY			-400		-2,100	-15,840	-2,688	-8,400	-29,428		
			Shtije NOA ENERGY				750					750		
26	KESH sh.a.	Transaksionet e brendshme	Shtije INFO Telecom					7,800				7,800		
			Blerje ENER TRADE			-400	-6,040	-4,284	-35,280	-26,016	-62,840	-134,860		
			Shtije ENER TRADE			1,600	9,725	39,029				50,354		
			Blerje PROINFINT CONSULTING									0		
26	KESH sh.a.	Transaksionet e brendshme	Blerje EZ-5 ENERGY									0		
			Shtije ALBESP				125	4,500				4,625		
			Blerje ALBESP			-160	-1,212	-1,260	-1,440	-2,540	-3,900	-10,512		
			Shtije FUTURE_ENT				350	1,830				2,180		
26	KESH sh.a.	Transaksionet e brendshme	Blerje FUTURE_ENT				-210	-210	-120	-120	-160	-820		
			Shtije OST									0		
			Blerje SPV BLUE 1							-4,190	-1,640	-5,830		
			Blerje ALPEX						-860.21	-2,003	-4,166	-7,029		
26	KESH sh.a.	Transaksionet e brendshme	Shtije ALPEX	73,077	54,780	47,183	32,750	29,797	21,818	20,554	14,938	294,897		
			Total transaksione	476,308	466,869	334,467	236,733	333,732	363,980	537,698	477,737	3,221,524		

Shënime:

1. Konsumatorët e kualifikuar për secilin subjekt ndryshojnë çdo muaj në varesë të kontratave të nënshkruara nga të dyja palët.
2. Shenja (-) është përdorur për energjinë që hyjnë në rrjet (blerje + import) ndërsa shenja (+) për energjinë që del nga rrjeti (shtije + eksport).
3. Çdo vlerë e sipërshtuar është e nominuar - me program (jo faktike me matje)

Burimi: OST Sha

PROCEDURAT E SHIT-BLERJES SË ENERGJISË ELEKTRIKE NGA KESH NË TREG TË LIBERALIZUAR

Shitje ne kushtet e prurjeve të mëdha

Shitje						
	Shoqëritë	Sasia (MWh)	EUR/MWh	Vlera	TVSH	Vlera me TVSH
Maj 2024	AlbEsp Trading & Consulting sh.p.k.	3,500	52.68	184,367.40	36,873.48	221,240.88
	Danske Commodities Albania sh.p.k.	13,160	48.02	631,895.60	126,379.12	758,274.72
	Ener Trade sh.p.k.	39,029	57.77	2,254,859.00	450,971.80	2,705,830.80
	Fuente Dynamics Tiranë	1,580	57.43	90,740.00	18,148.00	108,888.00
	GEN-I Tirana sh.p.k.	12,680	73.15	927,600.40	185,520.08	1,113,120.48
	GSA shpk	1,400	81.20	113,680.00	22,736.00	136,416.00
	Infinet Power Solution sh.p.k.	420	52.15	21,903.00	4,380.60	26,283.60
	NOA Energy Trade sh.p.k.	7,800	71.32	556,260.00	111,252.00	667,512.00
Totali		79,569	60.09	4,781,305.40	956,261.08	5,737,566.48

Shit-blerje e energjisë elektrike për optimizim financiar të shoqërisë KESH sh.a. me procedura bazuar ne rregulloren e Tregtimit

Shoqëria	Periudha	Statusi	Sasia	Çmimi	Vlera	TVSH	Vlera me TVSH
			MWh	Euro/MWh	Euro	Euro	Euro
Janar	01-31.01.2024	Shitje	-	-	-	-	-
		Blerje	-	-	-	-	-
Shkurt	01-29.02.2024	Shitje	-	-	-	-	-
		Blerje	-	-	-	-	-
Mars	01-31.03.2024	Shitje	6,400.00	71.28	441,318.80	86,021.84	527,340.64
		Blerje	8,064.00	46.68	376,409.68	46,603.22	423,012.90
Prill	01-30.04.2024	Shitje	29,890.00	77.22	2,308,173.00	461,634.60	2,769,807.60
		Blerje	28,206.00	43.49	1,226,605.92	245,321.18	1,471,927.10
Maj	01-31.05.2024	Shitje	10,000.00	74.95	749,495.00	79,899.00	829,394.00
		Blerje	10,080.00	50.06	504,582.54	95,495.82	600,078.36
Qershor	01-30.06.2024	Shitje	-	-	-	-	-

Qershor	01-30.06.2024	Blerje	-	-	-	-	-
Korrik	01-31.07.2024	Shitje	400.00	222.20	88,880.00	17,776.00	106,656.00
		Blerje	100.00	116.00	11,600.00	-	11,600.00
Gusht	01-31.08.2024	Shitje	-	-	-	-	-
		Blerje	-	-	-	-	-
Shtator	01-30.09.2024	Shitje	-	-	-	-	-
		Blerje	-	-	-	-	-
Tetor	01-31.10.2024	Shitje	-	-	-	-	-
		Blerje	-	-	-	-	-
Nentor	01-30.11.2024	Shitje	-	-	-	-	-
		Blerje	-	-	-	-	-
Dhjetor	01-31.12.2024	Shitje	-	-	-	-	-
		Blerje	-	-	-	-	-
TOTALE	Janar- Dhjetor	Shitje	46,690.00	76.84	3,587,866.80	645,331.44	4,233,198.24
		Blerje	46,450.00	45.62	2,119,198.14	387,420.22	2,506,618.36

		Blerje				
	Shoqëritë	Sasia (MWh)	EUR/MWh	Vlera	TVSH	Vlera me TVSH
Mars 2024	NOA Energy Trade sh.p.k.	400	53.1	21244	4248.8	25492.8
	GEN-I Tirana sh.p.k.	1840	45.2	83176	16635.2	99811.2
	Renrgy Trading Group sh.p.k.	112	42.9	4802.56	960.512	5763.072
	Danske Commodities Albania sh.p.k.	2008	48.1	96655.52	19331.104	115986.624
	Ayen Energy Trading sh.a.	88	54.4	4782.8	956.56	5739.36
	Fuente Dynamics sh.p.k. /Kosove	160	42.8	6840.8		6840.8
	Ener Trade sh.p.k	400	40.1	16040	3208	19248
	AlbEsp Trading&Consulting	160	39.5	6315.2	1263.04	7578.24
	Axpo d.o.o Beograd	432	54.8	23652	0	23652
	HSE d.oo	2464	45.8	112900.8		112900.8
Totali		8064	46.68	376409.68	46603.22	423012.90

Blerje						
Prill 2024	Shoqëritë	Sasia (MWh)	EUR/MWh	Vlera	TVSH	Vlera me TVSH
	AlbEsp Trading & Consulting sh.p.k.	1212	38.6	46782.32	9356.46	56138.78
	Danske Commodities Albania sh.p.k.	9900	45.2	447876	89575.20	537451.20
	Ener Trade sh.p.k.	6040	51.8	312764	62552.80	375316.80
	Fuente Dynamics	300	41.5	12444	2488.80	14932.80
	Fuente Dynamics Tiranë	210	36.8	7717.5	1543.50	9261.00
	GEN-I Tirana sh.p.k.	2814	39.6	111552	22310.40	133862.40
	GSA shpk	4410	36.1	159303.9	31860.78	191164.68
	HSE d.o.o.	3320	38.6	128166.2	25633.24	153799.44
Totali	28,206.00	43.49	1,226,605.92	245,321.18	1,471,927.10	

Blerje						
Maj 2024	Shoqëritë	Sasia (MWh)	EUR/MWh	Vlera	TVSH	Vlera me TVSH
	Future Energy Trading& Exchange Dynamics sh.p.k	210	50.0	10497.9	2099.58	12597.48
	GEN-I Tirana sh.p.k.	1680	49.1	82454.4	16490.88	98945.28
	AlbEsp Trading&Consulting	1260	48.6	61198.2	12239.64	73437.84
	Ener Trade sh.p.k	4284	50.9	218055.6	43611.12	261666.72
	Axpo d.o.o Beograd	546	49.6	27103.44	0.00	27103.44
	NOA Energy Trade sh.p.k.	2100	50.1	105273	21054.60	126327.60
Totali	10,080.00	50.06	504,582.54	95,495.82	600,078.36	

Shitje						
Mars 2024	Shoqëritë	Sasia (MWh)	EUR/MWh	Vlera	TVSH	Vlera me TVSH
	Ener Trade sh.p.k	1,600	71.40	114,240.00	22,848.00	137,088.00
	Danske Commodities Albania sh.p.k.	2,740	65.50	179,463.20	35,892.64	215,355.84
	EZ-5 ENERGY sh.p.k	160	70.06	11,209.60	-	11,209.60
	Gen-I	1,900	71.79	136,406.00	27,281.20	163,687.20
Totali	6400	68.96	441,318.80	86,021.84	527,340.64	

Shitje						
	Shoqëritë	Sasia (MWh)	EUR/MWh	Vlera	TVSH	Vlera me TVSH
	AlbEsp Trading & Consulting sh.p.k.	125	83.06	10,383	2,077	12,459

Prill 2024	Ayen Energy Trading sh.a.	750	58.15	43,613	8,723	52,335
	Danske Commodities Albania sh.p.k.	4,500	77.71	349,695	69,939	419,634
	Ener Trade sh.p.k.	9,725	78.98	768,075	153,615	921,690
	Fuente Dynamics	100	58.33	5,833	1,167	7,000
	Fuente Dynamics Tiranë	350	86.06	30,122	6,024	36,146
	GEN-I Tirana sh.p.k.	9,590	75.24	721,552	144,310	865,862
	GSA shpk	1,950	95.56	186,350	37,270	223,619
	HSE d.o.o.	850	79.53	67,600	13,520	81,120
	Infinet Power Solution sh.p.k.	125	90.99	11,374	2,275	13,649
	NOA Energy Trade sh.p.k.	750	60.15	45,113	9,023	54,135
	Renrgy Trading Group sh.p.k.	1,075	63.69	68,466	13,693	82,160
Totali	29,890.00	77.22	2,308,173.00	461,634.60	2,769,807.60	

Shitje						
Maj 2024	Shoqëritë	Sasia (MWh)	EUR/MWh	Vlera	TVSH	Vlera me TVSH
	Infinet Power Solutions sh.p.k.	250	70.99	17,747.50	3,549.50	21,297.00
	Future Energy Trading& Exchange Dynamics	250	77.19	19,297.50	3,859.50	23,157.00
	GSA sh.p.k.	2,500	82.38	205,950.00	41,190.00	247,140.00
	AlbEsp Trading&Consulting	1,000	78.37	78,370.00	15,674.00	94,044.00
	Renrgy Trading Group sh.p.k.	1,000	78.13	78,130.00	15,626.00	93,756.00
	EFT AG	5,000	70	350,000.00	-	350,000.00
	Totali	10,000	74.95	749,495.00	79,899.00	829,394.00

Blerje Korrik 24						
Korrik 24	Shoqëritë	Sasia (MWh)	EUR/MWh	Vlera	TVSH	Vlera me TVSH
	HSE d.o.o.	100	116	11,600.00	-	11,600.00
Totali	100	116.00	11,600.00	-	11,600.00	

Shitje						
24	Shoqëritë	Sasia (MWh)	EUR/MWh	Vlera	TVSH	Vlera me TVSH

Korri	GEN-I Tirana sh.p.k.	400	222.2	88,880.00	17,776.00	106,656.00
Totali		400	222.20	88,880.00	17,776.00	106,656.00

Shitje e energjisë elektrike -- Tregtar i rregjistruar ne Bursën Shqiptare të Energjisë ALPEX sha							
Muaji	Shoqëria	Periudha	Sasia	Çmimi	Vlera	TVSH	Vlera me TVSH
			MWh	Eur/MWh	Eur	Eur	Eur
Janar	Shitje ne Burse ALPEX	01-31.01.2024	20,995.40	93.94	1,972,212.53	-	1,972,212.53
Shkurt		01-29.02.2024	8,452.40	85.28	720,784.90	-	720,784.90
Mars		01-31.03.2024	1,898.81	94.37	179,185.95	-	179,185.95
Prill		01-30.04.2024	798.16	73.84	58,934.02	-	58,934.02
Maj		01-31.05.2024	4,331.87	69.65	301,707	-	301,707
Qershor		01-30.06.2024	307.35	95.58	29,376	-	29,376
Korrik		01-31.07.2024	3.44	177.93	612.08	-	612.08
Gusht		01-31.08.2024	2.45	167.39	410	-	410
Shtator		01-30.09.2024					
Tetor		01-31.10.2024					
Nentor		01-30.11.2024					
Dhjetor		01-31.12.2024					
Totali		Shitje	Janar- Dhjetor	36,789.88	89	3,263,222	-

Blerje e energjisë elektrike -- Tregtar i rregjistruar ne Bursën Shqiptare të Energjisë ALPEX sha							
Muaji	Shoqëria	Periudha	Sasia	Çmimi	Vlera	TVSH	Vlera me TVSH
			MWh	Eur/MWh	Eur	Eur	Eur
Janar		01-31.01.2024	-	-	-	-	-

Shkurt	Blerje ne Burse ALPEX	01-29.02.2024	-	-	-	-	-
Mars		01-31.03.2024	-	-	-	-	-
Prill		01-30.04.2024	-	-	-	-	-
Maj		01-31.05.2024	-	-	-	-	-
Qershor		01-30.06.2024	1,176.51	76.44	89,937	-	89,937
Korrik		01-31.07.2024	6,093.51	99.24	604,714.55	-	604,714.55
Gusht		01-31.08.2024	6,363.88		657,465.80	-	657,465.80
Shtator		01-30.09.2024					
Tetor		01-31.10.2024					
Nentor		01-30.11.2024					
Dhjetor		01-31.12.2024					
Totali		Blerje ne Burse	Janar- Dhjetor	13,633.90	99.17	1,352,117	0

Blerje energji elektrike sipas detyrimit për shërbim publik të vendosur me VKM 456/2022 & 449/2023

Blerje						
Qershor 2024	Shoqëritë	Sasia (MWh)	EUR/MWh	Vlera	TVSH	Vlera me TVSH
	AlbEsp Trading & Consulting sh.p.k.	1,440	73.98	106,536.00	21,307.20	127,843.20
	Ayen Energy Trading sh.a.	9,900	111.93	1,108,143.00	221,628.60	1,329,771.60
	Danske Commodities Albania sh.p.k.	8,400	116.47	978,348.00	195,669.60	1,174,017.60
	EFT AG	9,930	91.63	909,861.30	-	909,861.30
	Ener Trade sh.p.k.	35,280	100.51	3,545,868.00	709,173.60	4,255,041.60
	Fuente Dynamics Tiranë	120	52.52	6,302.40	1,260.48	7,562.88
	GEN-I Tirana sh.p.k.	9,750	117.04	1,141,111.50	228,222.30	1,369,333.80
	GSA sh.p.k.	1,530	99.86	152,791.20	30,558.24	183,349.44
	HSE d.o.o.	2,700	89.46	241,542.00	-	241,542.00
	NOA Energy Trade sh.p.k.	15,840	102.41	1,622,208.00	324,441.60	1,946,649.60
Renrgy Trading Group sh.p.k.	882	79.58	70,187.04	14,037.41	84,224.45	
Totali	95,772	103.19	9,882,898.44	1,746,299.03	11,629,197.47	

Blerje						
	Shoqëritë	Sasia (MWh)	EUR/MWh	Vlera	TVSH	Vlera me TVSH
	AlbEsp Trading & Consulting sh.p.k.	2,540	122.19	310,370.20	62,074.04	372,444.24
	Ayen Energy Trading sh.a.	3,600	127.80	460,080.00	92,016.00	552,096.00
	AXPO Beograd d.o.o.	2,632	134.96	355,208.00	-	355,208.00

Korrik 2024	Danske Commodities Albania sh.p.k.	3,960	188.92	748,105.20	149,621.04	897,726.24
	EFT AG	30,000	138.20	4,145,947.20	829,189.44	4,975,136.64
	Ener Trade sh.p.k.	26,016	124.92	3,249,808.80	649,961.76	3,899,770.56
	Fuente Dynamics Tiranë	120	122.32	14,678.40	2,935.68	17,614.08
	GEN-I Tirana sh.p.k.	7,500	133.23	999,188.00	199,837.60	1,199,025.60
	GSA sh.p.k.	10,440	130.69	1,364,439.60	272,887.92	1,637,327.52
	HSE d.o.o.	10,730	111.09	1,192,024.00	-	1,192,024.00
	NOA Energy Trade sh.p.k.	2,688	108.33	291,191.04	58,238.21	349,429.25
	Renrgy Trading Group sh.p.k.	2,108	118.43	249,652.60	49,930.52	299,583.12
	SPVBLUE1	4,190	119.94	502,564.50	100,512.90	603,077.40
Totali	106,524	130.33	13,883,257.54	2,467,205.11	16,350,462.65	

Blerje						
Gusht 2024	Shoqëritë	Sasia (MWh)	EUR/MWh	Vlera	TVSH	Vlera me TVSH
	AlbEsp Trading & Consulting sh.p.k.	3,900	129.07	503,357.40	100,671.48	604,028.88
	Ayen Energy Trading sh.a.	13,200	129.45	1,708,716.00	341,743.20	2,050,459.20
	Danske Commodities Albania sh.p.k.	12,000	147.15	1,765,771.20	353,154.24	2,118,925.44
	EFT AG	51,540	131.97	6,801,591.00	-	6,801,591.00
	Ener Trade sh.p.k.	62,840	130.61	8,207,684.00	1,641,536.80	9,849,220.80
	Fuente Dynamics Tiranë	160	122.32	19,571.20	3,914.24	23,485.44
	GEN-I Tirana sh.p.k.	10,930	127.21	1,390,432.10	278,086.42	1,668,518.52
	GSA sh.p.k.	9,620	138.48	1,332,189.80	266,437.96	1,598,627.76
	HSE d.o.o.	5,720	127.92	731,720.00	-	731,720.00
	NOA Energy Trade sh.p.k.	8,400	124.70	1,047,480.00	209,496.00	1,256,976.00
	Renrgy Trading Group sh.p.k.	3,150	126.01	396,931.50	79,386.30	476,317.80
	SPVBLUE1	1,640	102.18	167,580.00	33,516.00	201,096.00
Totali	183,100	131.47	24,073,024.20	3,307,942.64	27,380,966.84	

Burimi: KESH sha



