

BILANCI ENERGJITIK 6- MUJORIT TË PARË 2024 (MWh)

Prodhimi neto publik	
Prodhimi Neto KESH sha	
2,122,660	
Blerje KESH ne treg te liberalizuar	95,772
Prodhim+Blerje	2,218,432
<i>Shtembime (hyrje) KEK</i>	
<i>Shtembime (dalje) KEK</i>	360,193
<i>Energji shtembime ndihmese+disbal</i>	
Energji per FSHU nga KESH sha	1,858,239

Prodhuar nga PPE në rrjetin e OSSH			Prodhuar nga PPE ne rrjetin e OST		Prodhues te pavarur							
HEC Lanabregas	HEC.Priv/Kon ne Rrjetin e OSSH për FTL	Fotovoltaik (kon FTL)	HC.Priv/Kon ne Rrjetin e OST për FTL	HEC Ashta	HEC Banja	HEC Mogolica	HEC KURUM	HEC Pesqeshe	HEC Fango	HEC Qamli	SPV Blue 1	Fotovoltaik (ne treg te liro)
10,458	591,893	33,805	652,685	121,628	108,386	208,656	212,543	65,316	152,985	2,627	14,000	21,135

Prodhim neto vendas	4,318,777
---------------------	-----------

Energji e siguruar nga FTL					
Blerje HEC Lanabregas	Blerje HC.Priv/Kon ne Rrjetin e OSSH për FTL	Blerje FOTOVO L.TAIK	Blerje HC.Priv/Kon ne Rrjetin e OST për FTL	Blerje Neto Ashta	Blerje ne Treg të Liberalizuar nga FTL
10,458	591,893	33,805	652,685	121,628	272,819
1,683,288					

Balanca në interkoneksion (dhenë)	321,681
-----------------------------------	---------

Energji nga KESH per FSHU	1,858,239
Energji nga FTL per FSHU	801,010
2,659,249	
Energji për FSHU	
Klient te Sherbimit Universal	

Energji nga FTL per FSHU	801,010
2,659,249	
Energji për FSHU	
Klient te Sherbimit Universal	

Energji për humbjet OSSH	701,322
--------------------------	---------

Kliente te FTL ne treg te Liberalizuar	180,757
--	---------

Eksport FTL	0
-------------	---

Energji në hyrje dhe dalje (transmetuar) për klientet ne treg te liberalizuar e të lidhur ne rrjetin e OSSH	
199	
-199	

KONSUMI I ENERGJISE NE SHQIPERI	3,997,093
---------------------------------	-----------

3,997,093

Burimi: OST sha; KESH sha; OSSH sha; FSHU sha; FTL sha; (OSHEE Group sha)

TABELA ME TE DHENA PERIODIKE (MUJORE) TE OSHEE Group Sh.a 6-mujori I parë 2024		Janar	Shkurt	Mars	Prill	Maj	Qershor	Progresive	
A	Energji Totale e Hyrë në OSHEE Group Sh.a (MWh)								
A.1	Energji e transmetuar nepërmjet OST per logjari te OSHEE Group Sh.a	A=1.1+A.1.1.7	759,550	644,990	618,777	515,155	499,220	551,723	3,589,415
A.1.1	Nga KESH nepërmjet OST	A.1.1+Sum(A.1.1A.1A)	614,882	552,439	478,969	392,831	394,525	510,065	2,943,710
A.1.2	Nga OST si input i OSHEE Group Sh.a (Energji e blerë në ALPEX për FSHU)		379,224	386,578	271,570	188,593	216,264	415,609	1,858,239
A.1.3	Energji e transmetuar per klientet 35KV (te dal ne treg te parregulluar furnizues te tjere)		52,081	52,690	53,208	48,319	37,754	28,772	272,819
A.1.4	Nga OST per logjari te klienteve te OSHEE Sh.a prodhuar nga HEC-et ne rrejetin e transmetimit		740	3,150	6,363	8,742	11,263	14,234	44,492
A.1.5	Nga TEC VLORA nepërmjet OST		182,836	110,021	147,827	146,784	129,243	51,449	768,160
A.1.6	Nga Blitrica 1.2 nepërmjet OST		n/a	n/a	n/a	n/a	n/a	n/a	n/a
A.1.7	Export OSHEE Group Sh.a		n/a	n/a	n/a	n/a	n/a	n/a	n/a
A.2	Energji elektrike e injektuar ne OST nga Hec-et Lokale	A.2	73,759	35,851	73,148	67,149	51,938	12,519	314,364
A.3	Energji e transmetuar direkt ne rrejetin e OSHEE Group Sh.a	A.3 = Sum(A.3.1, A.3.2)	144,668	92,551	139,808	122,323	104,695	41,658	645,705
A.3.1	HEC Ulez,Lanabregas		2,114	1,880	1,799	1,828	1,999	838	10,458
A.3.2	Implantet Private/line Konesoln		138,715	85,036	128,626	113,803	94,440	32,073	591,893
A.3.3	Burimet e Rinnovave/line Fotovoltaik (BRE)		3,960	5,635	9,384	7,493	8,256	8,747	43,354
A.3.4	Prodhimi i injektuar ne OSSH nga BREET ne Treg te Parregulluar		993	1,326	1,666	1,974	2,523	2,609	11,090
B	Energji Totale ne Rrejetin e Shperndarjes (MWh)	B= A1 + A.3.4.2	833,309	680,841	691,925	582,304	551,158	564,242	3,903,778
C	Humbjet Totale ne Rrejetin e Shperndarjes (MWh)	C=C.1+C.2+C.3	177,293	114,411	134,056	97,092	87,861	90,609	701,322
C.1	Humbje Teknike njesite e TL (MWh)		10,755	7,774	9,897	7,090	6,502	6,928	48,946
C.2	Humbje Teknike ne Zona (MWh)		113,233	78,712	85,639	61,759	54,535	56,559	450,417
C.3	Humbje joTeknike ne Zona (MWh)		53,305	27,926	38,520	28,243	26,824	27,121	201,959
C.1	Humbjet Totale ne OSSH Sh.a (%)	C.1+C.2	21.28%	16.80%	19.37%	16.67%	15.94%	16.06%	17.97%
C.1.1	Humbje Teknike njesite e TL (%)		1.29%	1.14%	1.43%	1.22%	1.18%	1.23%	1.25%
C.1.2	Humbje Teknike ne Zona (%)		13.77%	11.70%	12.56%	10.74%	10.02%	10.15%	11.63%
C.1.3	Humbje joTeknike ne Zona (%)		6.40%	4.10%	5.57%	4.85%	4.87%	4.81%	5.17%
D	Energjia e përdorur në Rrejetin e Shperndarjes	D=Sum(D.1-D.7)	616,637	532,169	526,941	460,749	438,433	445,015	3,019,943
D.1	Shitur Klienteve FME Privat (MWh)	D.1 = D.1.1+D.1.2	51,042	47,867	49,561	41,162	46,908	48,666	284,806
D.1.1	Shitur Klienteve FME Privat (MWh)		115	26	18	16	13	11	89
D.1.2	Shitur Klienteve FME joBuxhetore(MWh)		1,403	1,356	1,488	1,480	1,635	1,710	9,072
D.1.3	Shitur Klienteve FME 20/10/6 (MWh)		49,525	46,485	48,055	39,666	44,860	46,945	275,536
D.2	Shitur Klienteve Private (MWh)	D.2 = D.2.1+D.2.2+D.2.3	106,119	97,666	92,094	85,872	91,024	115,130	587,904
D.2.1	Shitur nga rrejeti i Transmetimit per logjari te OSSH Sh.a		695	600	553	403	412	398	3,062
D.2.2	Shitur per nevoja te veta te OSSH Sh.a		695	600	553	403	412	398	3,062
D.2.3	Shitur Klienteve Private (pa ate per nevoja te veta dhe Ne TL)		106,119	97,666	92,094	85,872	91,024	115,130	587,904
D.3	Shitur Klienteve joBuxhetore (MWh)		3,438	3,258	3,043	2,425	3,962	2,905	19,031
D.4	Shitur Klienteve Buxhetore (MWh)		17,017	15,936	14,282	10,560	10,352	10,829	78,776
D.5	Shitur Klienteve Familjare (MWh)	D.5 = D.5.1+D.5.2	363,827	327,840	287,897	244,436	222,973	240,334	1,687,908
D.5.1	Shitur Klienteve Familjare (MWh)		355,015	319,413	279,590	236,306	214,665	231,723	1,636,713
D.5.2	Shitur Klienteve Familjare, per Ambientet e Perbashketa		8,812	8,427	8,307	8,130	8,308	8,611	50,595
D.6	Energji elektrike e injektuar ne OST nga Hec-et Lokale	D.6=J.2	73,759	35,851	73,148	67,149	51,938	12,519	314,364
D.7	Energji elektrike e perdorur nga klientet ne treg te parregulluar	D.7	740	3,150	6,363	8,742	11,263	14,234	44,492
E	Faturuar muaji Parardhes (000/leke)		7,982,027	7,374,630	6,650,006	6,078,325	5,298,049	5,291,466	38,674,503
F	Arketimet e muajit aktual (000/leke)		7,444,687	7,086,722	6,798,295	6,240,048	5,876,740	5,112,878	38,479,370
F.1	Arketuar per faturat korrente te vitit aktual	F.1 = F.1.1+F.1.2+F.1.3	43,814	4,919,897	4,403,372	4,022,204	3,968,749	3,280,026	20,641,981
F.1.1	Arketuar per faturat e tjera te viteve te kaluara		-	-	1,475,252	1,768,307	1,362,006	1,576,791	6,186,357
F.1.2	Arketuar per faturat e tjera te viteve te kaluara		7,300,873	2,086,825	915,472	548,817	545,985	253,061	11,651,032
F.1.3	Arketimet e muajit aktual (%)	F.1.1/F.1	92.0%	95.0%	102.2%	104.3%	110.9%	96.6%	99.5%
F.1.1.1	Arketuar per faturat korrente te vitit aktual (%)	F.1.1.1/F.1	0.5%	66.7%	66.2%	66.2%	74.9%	62.0%	53.4%
F.1.1.2	Arketuar per faturat e tjera te viteve te kaluara (%)	F.1.1.2/F.1	0.0%	0.0%	22.2%	29.1%	25.7%	29.8%	16.0%
F.1.1.3	Arketuar per faturat e tjera te viteve te kaluara (%)	F.1.1.3/F.1	91.5%	28.3%	13.8%	9.0%	10.3%	4.8%	30.1%
G	Faturuar muaji Raportues (000/leke)		7,374,630	6,650,006	6,078,325	5,298,049	5,291,466	5,903,682	36,556,158
1	Nr. Konsumatore gjithesej (Nr.)		1,324,441	1,327,372	1,330,088	1,333,496	1,333,406	1,336,562	1,333,406
2	Fatura te emetuara me lexim konsumi (Nr.)		1,027,226	1,025,143	1,036,467	1,035,495	1,039,374	1,058,729	6,222,434
3	Sasia e energjise se faturuar me lexim konsumi (MWh)		-	-	-	-	-	-	-
4	Fatura te emetuara me lexim "D" (Nr.)		299,881	301,375	297,510	305,542	303,683	283,805	1,792,196
5	Nr.Faturave te emetuara pa lexim (energjie e pa matur) (Nr.)		-	-	-	-	-	-	-
6	Sasia e energjise se faturuar si energji e pamatur (MWh)		-	-	-	-	-	-	-
7	Nr.Faturave te emetuara pa lexim (dem ekonomik) (Nr.)		101	61	52	26	31	25	296
8	Sasia e faturuar si dem ekonomik (MWh)		438	300	213	129	212	461	-
9	Nr.Faturave per te cilat eshte arketuar kamat vonese (Nr.)		374,497	322,031	360,381	375,842	393,071	367,026	2,182,750
10	Vlera e Kamat vonesave te arketuara (000/leke)		76,046	64,886	72,300	84,802	89,765	77,007	464,806

Shenime:

- Do te plotesohet kur te ketë informacion nga OST dhe XESH
- Faturat korrente perfshijnë faturat me date pagese brenda dates se fundit te muajit pasardhes pas muajit kur leshohet fatura
- Faturat me vonese perfshijnë faturat me date pagese pertej dates se fundit te muajit pasardhes pas muajit kur leshohet fatura
- Perfaqson numrin total te kontratave aktive
- Nese ne te njeften fature ka edhe konsum te lexuar edhe energji te pa matur, fatura eshte raportuar dy here ne te dyja kategorie
- Nese ne te njeften fature ka edhe konsum te lexuar edhe dem ekonomik, fatura eshte raportuar dy here ne te dyja kategorie
- Demi Ekonomik (aplikimi vendimite me ERE 232/2019). Nuk perfshihet ne strukturen e FSHU.

Burimi: OSSH.sh; FSHU.sh; FTL.sh; OSHEE.sh

BILANCI OSSH, FSHU,FTL sha 2024 (6-mujori)		
1	ENERGJI TOTALE E HYRE NE RRJETIN E OSSH-se	3,589,415
2	Energji e shitur nga KESH sha per FSHU sha	1,858,239
3	ENERGJI NE HYRJE E BLERE NGA FTL (OSHEE sha)	1,683,287
3.1	Blere nga Prodhimi i PPE në rrjetin e OSSH	636,156
3.2	Blere nga Prodhimi i PPE në rrjetin e OST	774,312
3.3	Blere ne Treg të Liberalizuar nga FTL sha	272,819
4	ENERGJI NE DALJE NGA FTL (OSHEE sha)	1,683,287
4.1	Energji nga FTL per FSHU	801,010
4.2	Energji nga FTL për humbjet OSSH	701,322
4.3	Energji e shitur nga FTL ne treg te liberalizuar	180,757
4.4	Eksport i FTL	-
4.5	Energji vetem per tu transmetuar tek klientet ne treg te liberalizuar (ne rrjetin e OSSH)	198
7	ENERGJI QE KALON NE RRJETIN E OSSH-se	3,903,778
7.1	Energji totale e transmetuar nga OST ne rrjetin e Shpërndarjes	3,246,487
7.2	Energji e transmetuar direkt ne rrjetin e Shpërndarjes nga impiantet e lidhur ne rrjetin e Shpërndarjes	342,928
7.3	Energjia e ngitur ne rrjetin e transmetimit nga centralet e lidhura ne rrjetin e OSSH	314,364
8	Humbje totale ne rrjetin e OSSH-se (%)	17.97

Burimi: OSSH sha; FSHU sha; FTL sha / OSHEE sha

	Janar	Shkurt	Mars	Prill	Maj	Qershor	2024		
HYRJE	Dhene nga H/C e KESH ne rrjetin e Transmetimit	461,940	434,525	312,293	230,865	333,614	349,424	2,122,661	5,133,699
	Dhene nga H/C e me perparesi ne rrjetin e Transmetimit (+Qami)	153,707	86,486	130,461	134,220	114,053	36,385	655,312	
	Energji nga Hec-et Lokale levruar ne Rrjetin e Transmetimit (me ngritje)	73,759	35,851	73,148	67,149	51,938	12,519	314,364	
	Gjenerim KURUM (prodhues i pavarur)	47,623	36,678	34,155	40,512	31,148	22,427	212,543	
	Gjenerim Spv Blue 1 (prodhuese i pavarur)	-	-	-	-	3,343	10,657	14,000	
	HEC ASHTA (prodhues i pavarur Kontr.me OSHEE)	29,506	23,646	19,871	15,359	18,186	15,061	121,629	
	HEC BANJE (prodhues i pavarur)	25,295	20,166	19,747	15,855	19,032	8,291	108,386	
	HEC MOGLICE (prodhues i pavarur)	55,232	39,392	42,314	25,222	28,288	18,209	208,657	
	HEC PESHQESH-T1/637 (prodhues i pavarur)	17,478	8,763	13,692	12,207	10,014	3,162	65,316	
	HEC FANGU (prodhues i pavarur)	45,494	23,264	15,108	25,046	24,409	19,663	152,984	
Importi(Hyre) nga Linjat e Interkonjeksionit	133,112	187,286	214,751	255,012	141,967	225,720	1,157,848		
DALJE	Humbjet ne Transmetim	22,608	17,520	17,149	17,399	16,130	13,854	104,660	5,133,699
	Transmetuar ne Rrjetin e Shperndarjes	687,647	586,964	550,408	457,962	443,881	519,626	3,246,488	
	Klientene treg te hapur (TL)	36,554	31,249	50,416	58,814	63,498	62,492	303,023	
	Eksporti (Dale) nga Linjat e Interkonjeksionit	296,337	260,325	257,566	287,271	252,483	125,546	1,479,528	
Humbjet ne Transmetim	22,608	17,520	17,149	17,399	16,130	13,854	74,676		
Humbjet ne Transmetim ne %	2.17	1.96	1.96	2.12	2.89	1.95	2.05		

Burimi: OST sha

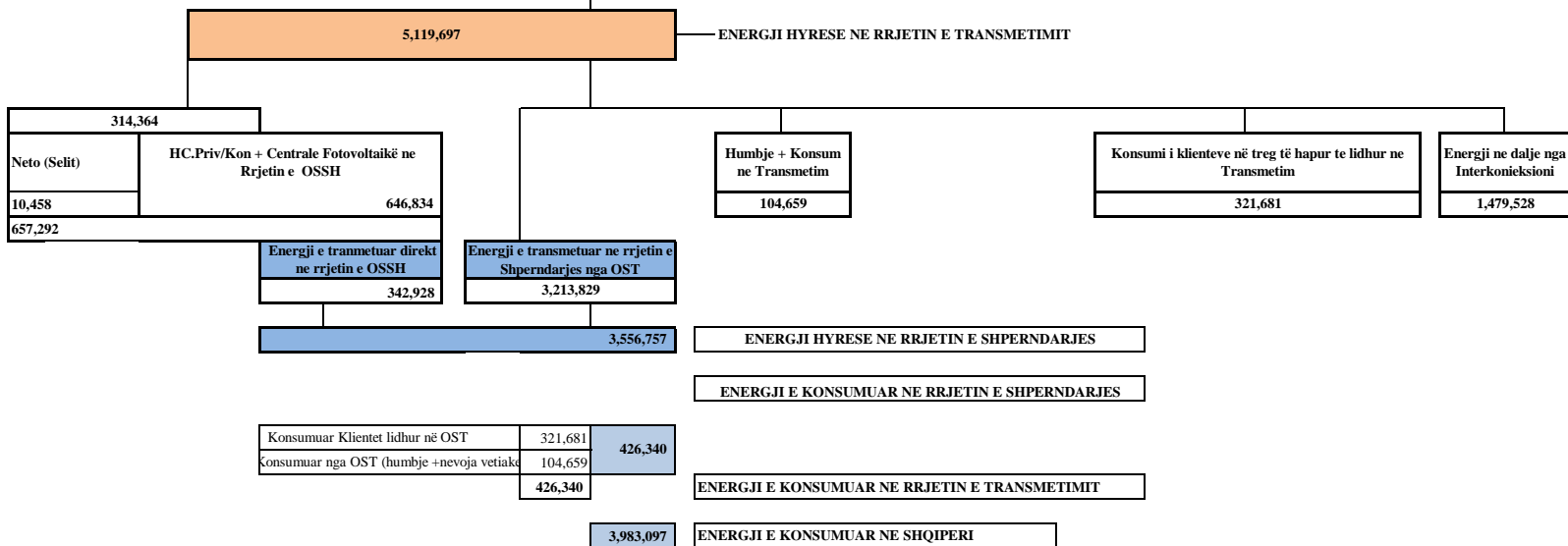
Bilanci i Energjisë Elektrike në sistemin e transmetimit për 6-mujorin e parë 2024

OST sha	Njësia e Matjes	Janar	Shkurt	Mars	Prill	Maj	Qershor	Shuma 2024 [MWh]
	MWh							
Prodhimi nga KESH_GEN në Rrjetin e Transmetimit	1	461,940	434,525	312,293	230,865	333,613.58	349,424	2,122,660
Prodhimi nga HEC/HPP e vogla në Rrjetin e Transmetimit	2	73,759	35,851	73,148	67,149	51,938	12,518.7	314,364
Prodhimi nga PPE/IPP e mëdha në Rrjetin e Transmetimit	3	153,707	86,486	130,461	134,220	114,053	36,384.6	655,312
Prodhimi nga HEC Peshqesh	4	17,478	8,763	13,692	12,207	10,014	3,162	65,316
Prodhimi nga HEC Banja	5	25,295	20,166	19,747	15,855	19,032	8,291	108,386
Prodhimi nga HEC FANG	6	45,494	23,264	15,108	25,046	24,409	19,663	152,985
Prodhimi nga HEC Moglicë	7	55,232	39,392	42,313	25,222	28,288	18,209	208,656
Prodhimi nga HEC Ashta	8	29,506	23,646	19,871	15,359	18,185	15,060	121,628
Prodhimi nga Spv Blue 1 T1/139						3,343	10,657	14,000
Prodhimi nga KURUM (Ulez-Shkopet&Bistrica1,2)	9	47,623	36,678	34,155	40,512	31,148	22,427	212,543
Eksporti (-) nga Linjat e Interkonjeksionit	D	296,337	260,325	257,566	287,271	252,483	125,546	1,479,528
Importi (+) nga Linjat e Interkonjeksionit	R	133,112	187,286	214,751	255,012	141,967	225,720	1,157,847
Balanca (Total Interkonjeksioni)	11=(R-D)	163,225	73,039	42,815	32,259	110,516	(100,174)	321,681
Energjia Totale në Marrje	12=(1+2+3+4+5+6+7+8+9+10+R)	1,043,146	896,058	875,539	821,446	772,648	710,860	5,119,696
Humbjet në Rrjetin e Transmetimit (përfshirë Nevojat Vetjake)	13	22,608	17,520	17,149	17,399	16,130	13,854	104,659
Humbjet në Rrjetin e Transmetimit %	14=13/12	2.17	1.96	1.96	2.12	2.088	1.95	2
Energjia Totale në Dhënie	15=(12-13)	1,020,538	878,538	858,390	804,047	756,518	697,006	5,015,037
<i>Transmetuar në Linjat e Interkonjeksionit</i>	16=D	296,337	260,325	257,566	287,271	252,483	125,546	1,479,528
<i>Transmetuar tek Klientët e Kualifikuar</i>		36,554	31,249	50,416	58,814	63,498	62,492	303,022
<i>EL220-L220KURUM/337</i>		4,874.2	4,501	23,996	24,673	23,274	25,737	107,057
<i>F.ARRES-T3/653</i>					1,464	1,528	1,473	4,466
<i>Titan T1,T2</i>		9,587.6	9,037	4,561	8,997	10,364	10,143	52,691
<i>FUSHE KRUIJE 220kV-T2/058</i>		5,383.0	707	2,988	9,172	10,809	9,629	38,689
<i>N/ST 220/6,3Colacent-T1/336</i>		145.3	1,023	1,734	1,746	2,181	592.8	7,422
<i>N/ST i GSA EL 110kV-T1/694</i>		8,955.8	8,466	8,959	2,772	162	161	29,477
<i>N/ST i GSA EL 110kV-T2/960</i>		-	-	-	-	-	0	0
<i>N/ST I CWI Albania T1/148</i>		466.1	395	531	416.79	572	557	2,938
<i>N/ST i AES EL 110kV-T1/690</i>		158.5	22	-	2,414	7,298	7,073	16,965
<i>N/ST I AES EL 110kV-T2/692</i>		-	118	147	60	2	0	327
<i>HEC Moglice T1,T2,T3</i>		1.4	1	1	1	0.83	6.60	11
<i>HEC Peshqesh-T1/633</i>		0.9	9	5	4.99	6	25	51
<i>Spv Blue 1 T1/139</i>						4	14	18
<i>Lajthiza T1/742</i>		14.4	22	17	26.34	21	228	329
<i>HEC Ashta1-T1,HEC Ashta2-T1,</i>		-	-	0.11	0.00	0	0.19	1
<i>HEC Banje T1,T2</i>		10.8	12	20	19.25	19	20.50	102
<i>HEC Fang-T1,T2,</i>		1.300	35	48	24.5	22	23	153
<i>Gjenerim KURUM</i>		1.296	5	16	8.59	9.84	19	59
<i>FERRO KROM-F1,F2,F3,F4</i>		6,952.9	6,896	7,392	7,013	7,223	6,789	42,266
<i>Transmetuar në rrjetin e Shpërndarjes</i>		687,647	586,964	550,408	457,962	443,881	519,626	3,246,487
<i>Transmetuar në rrjetin e Shpërndarjes 110 kV</i>		599,909	512,591	482,164	400,726	392,970	459,925	2,848,285
<i>Transmetuar në rrjetin e Shpërndarjes 35 kV</i>		43,519	36,186	33,063	29,398	25,907	32,412	200,485
<i>Transmetuar në rrjetin e Shpërndarjes 6, 10, 20 kV</i>		44,219	38,186	35,181	27,838	25,004	27,288	197,716

Burimi: OST sha

PARAQITJA SKEMATIKE E FLUKSEVE TE ENERGIJSE NE SISTEMIN ELEKTRO-ENERGJITIK SHQIPETAR VITI 2024 (MWh)

Energji e lëvruar nga HEC-et e KESH sha	Energji e levruar nga prodhuesit me përparësi lidhur ne OST (kontrate me FTL)	Energji e levruar nga H/C ASHTA lidhur ne OST (kontrate me FTL)	Energji e levruar nga HEC et Priv/konc lidhur ne OST (Prodhues ne treg te liberalizuar)					Energji ne hyrje nga Interkoneksioni		
2,122,660	652,685	121,628	Kurum	Banje	Moglice	Fangu	Spv Blue 1	Peshqesh	Qami	1,157,847
			212,543	108,386	208,656	152,985	14,000	65,316	2,627	



LEGJENDA	
FSHU	FURNIZUES I SHËRBIMIT UNIVERSAL
FMF	FURNIZUES I MUNDËSISË SË FUNDIT

Burimi: OST sha; KESH sha; OSSH sha; FSHU sha; FTL sha; (OSHEE Group sha)

PRODHIMI GJATE VITIT 2024 NGA CENTRALET E LIDHURA NE RRJETIN E TRANSMETIMIT (MWh)

CENTRALI PRODHUES	MW	SUBJEKTI	LIDHJA	JANAR	SHKURT	MARS	PRILL	MAJ	QERSHOR	6- MUJORI	
HEC "Fierze"	500.000	"KESH" sha	220 kV	461,940	434,525	312,293	230,865	333,613	349,424	2,122,660	
HEC "Koman"	600.000		220 kV								
HEC "V. Dejes"	250.000		220 kV								
Tec Vlora	98.000	"KESH" sha	220 kV								
	1,448,000									2,122,660	
HEC "Ulez"	25.200	"Kurum International" sha.	110 kV	47,623	36,678	34,155	40,512	31,148	22,427	212,543	
HEC "Shkopet"	24.000		110 kV								
HEC "Bistrica 1"	22.500		110 kV								
HEC "Bistrica 2"	5.000	"Ayen As Energji" sha	110 kV	17,478	8,763	13,692	12,207	10,014	3,162	65,316	
HEC "Peshqesh"	28.000		220 kV								
HEC "Fangu"	74.600	"Devoll Hydropower" sha	110 kV	25,295	20,166	19,747	15,855	19,032	8,291	108,386	
HEC "Banje"	73.000		110 kV								
HEC "Moglice"	184.000	"Devoll Hydropower" sha	111 kV	55,232	39,392	42,313	25,222	28,288	18,209	208,656	
HEC Qami-1	1.730	"Lajthiza Invest" shpk		628	280	624	521	416	158	2,627	
Spv Blue 1				-	-	-	-	3,343	10,657	14,000	
	438,030									764,512	
HEC "Ashta"	48.200	"Energji Ashta" shpk	110 kV	29,506	23,646	19,871	15,359	18,185	15,060	121,627	
										121,627	
HEC "Bishnica 2"	2.500	"HEC Bishnica 1,2" shpk	110 kV	1,581	919	1,125	1,300	1,093	343	6,361	
HEC "Dardhe"	5.800	"Wenerg" shpk	110 kV				1,354	1,477	237	9,547	
HEC "Truen"	2.500	"TRUEN" shpk	110 kV	3,385	1,447	1,647					
HEC "Ternove"	8.385	"TEODORI 2003" shpk	110 kV	1,341	1,141	799	879	710	400	5,270	
HEC "Gjorce"	29.610	"DITEKO" shpk	110 kV	18,029	13,381	14,589	13,243	11,700	5,457	76,399	
HEC "Slabinje 2C"	3.400	"Hidropower Elektrik" shpk	110 kV	1,270	811	1,654	1,855	1,532	522	7,644	
HEC "Slabinje 2D"	4.885		110kV	1,384	693	1,232	1,361	1,078	266	6,013	
HEC "Slabinje 2E"	3.800		110 kV	2,007	1,008	1,631	1,774	1,579	273	8,271	
HEC "Slabinje"	13.800	"Power-Elektrik-Slabinje" shpk	110 kV	5,506	3,234	4,359	4,329	4,107	1,274	22,810	
HEC "Bele 1"	5.000	"Euron Energy" shpk	110 kV	18,863	12,851	16,084	19,841	19,381	7,163	94,183	
HEC "Topojan 2"	5.800										
HEC "Bele 2"	11.000	"Alb-Energy" shpk									
HEC "Topojan 1"	2.900	"Energjal" shpk	110 kV	2,734	724	2,160	2,618	2,280	395	10,911	
HEC "Orgjost I Ri"	4.800										
HEC "Cerruje-1"	2.300										
HEC "Cerruje-2"	2.800	"Energy partners Al" shpk									
HEC "Rrupe"	3.600										
HEC "Rapunj 1,2"	8.100	"C & S Construction Energy" shpk	110 kV	5,256	3,406	4,759	4,862	3,670	953	22,906	
HEC "Rrapuni 3,4"	8.850	"C & S Energy" shpk	110 kV	4,942	2,854	4,146	3,709	2,839	922	19,412	
HEC "Lapaj"	13.620	"Gjo-Spa POWER" shpk	110 kV	5,765	3,130	5,921	7,795	6,331	1,853	30,793	
HEC "Lengarice"	8.940	"Lengarica & Energy" shpk	110 kV	4,656	2,928	5,400	2,493	1,464	328	17,270	
HEC "Lura 1"	6.540	"Erdat Lura" shpk	110 kV				5,104	3,834	641	25,492	
HEC "Lura 2"	4.020		110 kV								
HEC "Lura 3"	5.660		110 kV								
HEC "Malla"	5.455	"Gjurr Rec" shpk	110 kV	2,270	1,077	1,933	1,637	1,287	137	8,341	
HEC "Prela"	14.970	"Prele Energji"	110 kV	6,318	1,592	5,767	4,789	3,948	676	23,090	
HEC "Cemerica 1"	0.88	"REJ ENERGY" shpk	110 kV				1,672	782	128	8,835	
HEC "Cemerica 2"	1.08		110 kV								
HEC "Cemerica 3"	2.1		110 kV								
HEC "TUÇ"	4.47	MC Inerte Lumzi	110 kV				3,031	2,153	842	17,195	
HEC "Lumzi"	11		110 kV								
HEC "Denas"	14.5	"Denas Power" shpk	110 kV	5,909	3,688	5,714	3,915	2,065	597	21,887	
Llënga "1"	1.73	"HEC LLËNGË" sh.p.k	110 kV				1,493	1,136	239	7,051	
Llënga 2	0.3		110 kV								
Llënga 3	1.5		110 kV								
HEC Shpella Poshte 2	2.3	Liria Energji shpk	110 kV	1,906	869	1,209	1,405	1,030	275	6,693	
HEC Germani 1	4.8	SA'GA-MAT shpk	110 kV				1,376	922	147	6,785	
HEC Germani 2	1.5		110 kV								
HEC Lashkiza 1	4.076	HEC Lashkiza shpk	110 kV				742	622	179	4,154	
HEC Lashkiza 2	0.882		110 kV								
HEC Seta 1+2	7.454	"Hydro Seta" sh.p.k	110 kV				4,519	3,427	947	23,208	
HEC Seta 3	2.722		110 kV								
HEC Seta 4	4.724		110 kV								
HEC Darsi 1,2	14.963	Hen Energy shpk	110 kV	7,202	2,769	3,731	4,448	3,216	648	22,014	
HEC Egnatia	5	REMI shpk	110 kV	1,937	879	1,283	1,119	1,125	480	6,824	
HEC Seka & Zais/684	14.96	SEKA Hydropower shpk	110 kV	9,701	5,365	9,523	8,768	7,598	2,127	43,083	
HEC ARSTI	3.13	Hec Arsti shpk	110 kV	2,440	1,467	1,887	1,444	1,325	472	9,034	
HEC KASKADA GJADER T1/344	24.9	S.P.E. Gjader shpk	110 kV	4,574	1,603	4,112	3,791	3,186	182	17,448	
HEC-et Dragobia & Ceremi/686	21.9	Dragobia Energy shpk	110 kV	5,672	4,781	7,029	9,657	6,330	2,774	36,242	
HEC Vesheica 1,2	13.9	"Kalisi Hydropower" shpk	110 kV	2,059	1,204	2,121	7,375	10,412	4,350	27,521	
	353,806									652,685	
				153,079	86,206	129,836	133,699	113,638	36,227		

TE VITIT 2023 NGA CENTRALET E LIDHURA NE RRJETIN E SHPERNDARJES (MWh)

HECET DHE KAPACITETI	MW	SUBJEKTI	LIDHJA	JANAR	SHKURT	MARS	PRILL	MAJ	QERSHOR	6- MUJORI
HEC "Lanabregas"	5.000	"Hec Lanabregas" sha	35kV	2,114	1,880	1,799	1,828	1,999	838	10,458
HEC "Lenie"	0.400	"EMIKEL 2003" sh.p.k	10kV	280	263	281	263	284	192	1,563
HEC "Çorovode"	0.200		10kV	107	92	117	105	88	20	529
HEC "Smokthine"	9.200	"Albanian Green Energy" sh.p.k	35 kV	3,740	2,643	3,498	3,093	2,784	2,038	17,795
HEC "Bulqize"	0.600	"Balkan Green Energy" shpk	10kV	146	90	115	142	123	77	694
HEC "Homesh"	0.395		10kV	68	50	53	51	53	22	297
HEC "Zerqan"	0.625		6kV	145	151	170	159	152	119	895
HEC "Arras"	4.800		20kV	2,524	2,427	2,296	2,277	1,951	621	12,097
HEC "Orgjost"	1.200		10kV	735	664	674	725	762	372	3,932
HEC "Lekhibaj"	1.400		10kV	482	770	794	755	739	669	4,209
HEC "Dukagjin"	0.640		10kV	160	154	179	226	274	243	1,236
HEC "Marjan"	0.200		10kV	0	0	0	0	0	0	0
HEC "Lozhan"	0.100		10kV	72	57	74	56	37	4	301
HEC "Barmash"	0.830		10kV	216	157	232	121	86	16	827
HEC "Treske 2"	0.250		10kV	117	99	120	98	68	21	524
HEC "Nikolice"	0.700		10kV	270	215	274	221	201	117	1,298
HEC "Funares"	1.920		10kV	856	857	905	858	775	287	4,538
HEC "Lunik"	0.200		10kV	143	143	140	132	132	31	721
HEC "Kerpace"	0.420		6kV	31	69	63	69	71	72	374
HEC "Ujanik"	0.630		10kV	175	148	149	131	115	47	766
HEC "Borsh"	0.250		6kV	86	118	114	91	76	52	537
HEC "Leshnice"	0.380		10/6kV	74	65	118	67	53	32	410
HEC "Velcan"	1.200		10kV	528	253	504	479	489	131	2,384
HEC "Muhur"	0.250		6kV	71	65	58	74	63	14	345
HEC "Rajan"	1.020	10kV	406	307	480	218	156	31	1,598	
HEC "Lure"	0.750	10kV	51	147	162	114	24	0	496	
HEC "Gjanç"	3.700	"Spahiu Gjanç" sh.p.k.	35 kV	0	0	0	0	94	1,471	1,565
HEC "Bogove"	2.500	"Wonder power" sha	35 kV	1,225	558	1,347	1,054	903	230	5,318
HEC "Xhyre"	0.570	"Amal" sh.p.k	10kV	232	206	212	195	209	142	1,195
HEC "Stranik"	4.600	"Hydro Invest 1" shpk	35kV	2,367	1,427	1,630	1,361	1,220	259	8,265
HEC "Zall Tore"	3.000		35kV	1,914	1,257	1,326	1,122	1,159	455	7,232
HEC "Klos"	1.950	"Malido-Energji" shpk	6kV	628	321	349	318	352	114	2,083
HEC "Borje-Oreshke"	1.500	"HIDROALBANIA Energji" shpk	35kV	2,650	1,840	2,585	3,334	3,097	1,330	14,835
HEC "Cernaleve"	2.950		35kV	1,134	769	1,101	1,429	1,227	492	6,151
HEC "Cernaleve 1"	3.270		35kV	1,284	860	1,194	1,585	1,354	552	6,829
HEC "Murdarh 1"	2.680	"HydroEnergy" shpk	10kV	1,510	545	1,242	741	1,167	230	5,434
HEC "Murdarh 2"	1.000		10kV	974	364	795	449	561	135	3,278
HEC "Dishnice"	0.200	"Dishnica Energji" shpk	10kV	46	48	92	67	50	21	324
HEC "Lubonje"	0.300	"Elektro Lubonja" shpk	10kV	146	81	119	61	46	7	459
HEC "Peshk"	3.430	"Koka & Ergi Energy Peshk" shpk	35kV	1,861	1,140	1,887	1,482	1,196	351	7,916
HEC "Labinot-Mal"	0.250	"Ansara Koncension" shpk	6kV	43	39	36	38	38	18	213
HEC "Pobreg"	12.300	"Energy Plus" shpk	35kV	6,461	3,431	5,312	6,787	6,518	1,784	30,294
HEC "Vlushe"	14.200	"Hec Vlushe" shpk	35kV	6,263	2,958	7,200	4,821	2,766	618	24,626

HEC "Belesova 1"	0.150	"Korkis 2009" shpk	6kV	0	0	0	0	0	0	0	0
HEC "Faqekuq 1,2"	6.400	"HP OSTROVICA ENERGY" shpk	35kV	2,064	1,222	2,084	2,617	1,403	326	9,717	
HEC "Shemri"	1.000	"Erald Energjitik" shpk	10kV	426	157	305	247	224	5	1,364	
HEC "Mgulle"	0.280	"Erald Energjitik" shpk	10kV	267	224	248	230	233	12	1,213	
HEC "Krvezi 1"	0.600	"Bekim Energjitik" shpk	10kV	705	349	572	414	399	0	2,440	
HEC "Selishte"	2.000	"Selishte" shpk	35kV	1,088	590	923	810	615	186	4,214	
HEC "Carshove"	1.500	"ERMA MP" shpk	10kV	503	378	593	230	103	21	1,827	
HEC "Ura e Dashit"	1.200	"ERMA MP" shpk	10kV	1,662	878	1,742	957	494	41	5,774	
HEC "Gizavesh"	0.500	"Dosku Energy" shpk	10kV	0	0	0	0	0	0	0	
HEC "Koka 1"	3.200	"Snow Energy" shpk	35kV	907	394	853	645	523	65	3,387	
HEC "Stravaj"	3.600	"Stravaj Energji" shpk	35kV	2,111	1,223	1,471	1,334	1,231	368	7,739	
HEC "Picar 1"	0.200	"Peshku Picar 1" shpk	6kV	55	60	89	67	48	33	352	
HEC "Vertop"	1.520	"Hydro Salillari Energy" shpk	35kV	310	169	293	262	297	136	1,467	
HEC "Martanesh"	10.500	"Albanian Power" shpk	35kV	2,951	1,608	3,071	2,151	1,869	375	12,025	
HEC "Verba 1,2"	5.000	"Hydro power Plant Of Korca" shpk	35kV	815	390	827	1,394	1,149	325	4,901	
HEC "Fterra"	1.080	"HYDROBORSH" shpk	35kV	902	647	956	733	653	498	4,389	
HEC "Ostren i Vogel"	0.320	"Lu & Co Eco Energy 2011" shpk	10kV	111	107	113	109	107	81	628	
HEC "Kozel"	0.500	"Kozel" shpk	10kV	142	109	114	105	53	0	523	
HEC "Helmës 1"	0.800	"E.T.H.H." shpk	10kV	426	251	451	248	126	10	1,513	
HEC "Helmës 2"	0.500	"E.T.H.H." shpk	10kV	241	152	232	150	87	22	886	
HEC "Qafezeze"	0.400	"Caushi-Energji" shpk	10kV	584	541	611	407	275	58	2,475	
HEC "Trebisht"	1.775	"SA-GLE Kompani" shpk	10kV	616	397	598	579	444	20	2,654	
HEC "Mollaj"	0.600	"Energji Xhaci" shpk	10kV	143	124	138	67	48	0	520	
HEC "Tucep"	0.400	"Tucep" shpk	10kV	299	286	292	290	291	234	1,692	
HEC "Treska4"	3.600	"Hec-Treska" shpk	35kV	1,602	1,062	1,671	847	673	381	6,234	
HEC "Treska3"	0.400	"Hec-Treska" shpk	35kV	197	152	222	134	89	43	837	
HEC "Treska 2T"	0.620	"Hec-Treska" shpk	35kV	391	280	426	264	198	106	1,665	
HEC "Sotire 1 & 2"	2.200	"Hydro Energy Sotira" shpk	35kV	642	347	549	666	648	310	3,162	
HEC "Shutine"	2.400	"Shutina energji" shpk	10kV	564	345	619	419	344	18	2,308	
HEC "Cekrez 1,2"	0.660	"Zall Herr Energji 2011" shpk	6kV	416	412	453	350	362	410	2,403	
HEC "Qarr"	1.000	"Hec Qarr & Kaltani" shpk	35kV	776	581	571	351	289	125	2,693	
HEC "Bisak"	1.300	"Bardhgjania" shpk	6kV	665	432	388	422	520	243	2,670	
HEC "Shales"	1.080	"Gjoka Konstruktion - Energji" shpk	35kV	60	0	0	129	151	25	365	
HEC "Strelce"	1.174	"Gjoka Konstruktion - Energji" shpk	35kV	598	336	629	620	476	98	2,757	
HEC "Shpelle"	0.400	"Sarolli" sh.p.k	10kV	206	109	187	186	147	37	873	
HEC "Bicaj"	3.100	"En.Ku" sh.p.k	10kV	0	0	0	0	0	0	0	
HEC "Leskovik 1"	1.072	"Maksi Elektrik" sh.p.k	10kV	44	41	42	39	35	15	215	
HEC "Leskovik 2"	1.100	"Maksi Elektrik" sh.p.k	10kV	59	57	62	16	52	29	275	
HEC "Orenjë"	0.875	"Juana" sh.p.k	10kV	187	168	149	153	136	65	857	
HEC "Tamarë"	0.750	"WTS Energji" shpk	10kV	0	0	0	0	0	0	0	
HEC "Benë"	1.000	"Marjakaj" shpk	6kV	124	153	181	162	165	42	826	
HEC "Vithkuq 2"		"Favina 1" shpk		0	0	0	0	732	198	931	
HEC "Vithkuq 1"	2.715	"Favina 1" shpk	35/10kV	1,418	1,252	1,414	1,024	0	0	5,109	
HEC "Selca"	1.600	"Selca Energji" shpk	10kV	1,241	1,134	1,259	1,268	1,100	545	6,547	
HEC "Kumbull-Merkurth"	0.830	"DN & NAT Energy" shpk	6kV	198	92	212	332	224	43	1,102	
HEC "Sasaj"	8.600	"Energo - Sas" shpk	35kV	2,865	2,393	3,065	2,532	2,234	697	13,786	
HEC "Tervol"	10.600	"Hec i Tervolit" shpk	35kV	4,953	1,637	4,700	3,505	2,922	592	18,309	
HEC "Radove"	2.500	"M.T.C. Energy" shpk	10kV	1,293	941	1,434	721	428	234	5,052	
HEC "Gurshpat 1"	0.840	"Gurshpat Energy" shpk	10kV	703	579	475	439	554	196	2,946	
HEC "Gurshpat 2"	0.830	"Gurshpat Energy" shpk	10kV	816	525	582	510	630	182	3,244	
HEC "Bistrica 3"	1.570	"Bistrica 3 Energy" shpk	6kV	917	683	858	748	467	0	3,673	
HEC "Hurdhas 1"	1.710	Hydropowerplant Construction shpk	6kV	2,349	1,197	1,852	1,869	1,625	437	9,328	
HEC "Perrollaj"	0.500	"Fatlum" shpk	10kV	180	49	76	80	33	0	418	
HEC "Koxheraj"	0.620	"Koxherri Energji" shpk	10kV	252	159	251	210	157	72	1,101	
HEC "Kacni"	3.870	"Kisi-Bio-Energji" shpk	20kV	1,066	356	786	826	409	135	3,578	
HEC "Lena 1"	1.950	"Lena 1" shpk	35kV								
HEC "Lena 2"	2.300	"Gama Energy" shpk	35kV	1,095	654	1,299	864	606	64	4,581	
HEC "Lena 2A"	0.250	"Lena 2A" shpk	35kV								
HEC "Driza"	3.408	"Mesopotam Energy" shpk	35kV	462	290	337	253	225	180	1,746	
HEC "Strelca 1,2,3"	5.349	"Strelca Energy" shpk	35kV	1,306	835	1,463	1,936	1,469	455	7,463	
HEC "Ujanik 2"	2.500	"HP Ujaniku Energy" shpk	35kV	1,035	498	813	752	434	32	3,565	
HEC "Nishove"	1.360	"Nishova Energy" shpk	35kV	104	88	98	102	112	68	572	
HEC "Shtika"	1.300	"Perparimi SK" shpk	10kV	397	255	586	382	257	10	1,887	
HEC "Ballenjë"	1.900	"Ballenja Power Martanesh" shpk	35kV	485	233	536	351	249	34	1,888	
HEC "Gavran 1"	0.998	"Gavran Energy" shpk	35kV	395	225	270	250	248	74	1,463	
HEC "Gavran 2"	1.215	"Gavran Energy" shpk	35kV	517	291	340	329	300	22	1,798	
HEC "Kasollet e Selces 1"	4.000	"Xhengo Energji" shpk	35kV	1,179	664	989	1,067	934	355	5,187	
HEC "Holta Kabash"	2.200	HEC Kabash Porocan shpk	35kV								
HEC "Holta Porocan"	3.300	HEC Kabash Porocan shpk	35kV	1,715	866	2,034	1,493	1,228	288	7,626	
HEC "Lusen 1"	0.315	"Eurobiznes" shpk	35kV	102	70	85	75	50	11	393	
HEC "Ura e Fanit"	1.000	"Ayen As Energji" sha	35kV	499	469	504	550	546	486	3,053	
HEC "Gorice"	1.747	"THE BLUE STAR" sh.p.k	35kV	901	683	1,084	760	503	47	3,978	
HEC "Kabash 1&2"	5.800	"Energji Unvers" shpk	35kV	1,181	451	859	659	458	0	3,607	
HEC "Tucep 2"	1.7	"DUKA T2" shpk	35kV	423	380	397	408	386	267	2,260	
HEC "Dobrenje Tomorrice"	2.4	DAAB Energy Group shpk	35kV	320	265	365	327	297	103	1,676	
HEC "Razdoli"	0.765	Hydro Vizion shpk (1 pa licens)	35kV	189	141	342	296	121	108	1,197	
HEC "Dragostunje"	3.1	"HEC-i Dragostunje" shpk	35kV	3,544	952	2,271	2,460	1,605	70	10,903	
HEC "Stebleve"	3.4	"PURE ENERGY STEBLEVA" shpk	35kV	469	221	402	339	167	11	1,609	
HEC "Zerëc 1"	0.55	"EnRel Hydro" shpk	35kV	840	619	967	700	450	136	3,712	
HEC "Zerëc 2"	1.315	"EnRel Hydro" shpk	35kV								
HEC "Shëngjon 1"	0.651	"EDIANI" sh.p.k.	35kV	465	243	286	264	291	109	1,659	
HEC "Shëngjon 2"	0.356	"EDIANI" sh.p.k.	35kV								
HEC "Blaç"	1.3	"BLAC ENERGY" sh.p.k	35kV	97	36	114	328	225	35	837	
HEC "Qarrishtë"	0.3	"IDI-2005" SHPK	35kV	146	79	170	194	150	22	761	
HEC "Vendresh"	0.456	"HP VENDRESH ENERGY"	35kV	99	59	116	74	74	0	422	
HEC "Antena"	1.105	"DERBI-E" shpk	35kV	493	161	299	331	166	0	1,450	
HEC "Kamenice"	0.973	HP Kamenica shpk	10kV	507	325	389	290	185	64	1,761	
HEC "Qytezë"	0.9	Muso Hc Qytezë	10kV	365	274	360	270	197	77	1,542	
HEC "Marjan Gura e Vesheve"	0.63	Marituda Shpk	10kV	157	87	135	198	185	56	819	
HEC "Skatinë"	2.677	Skatine- Hec Shpk	10kV	1,042	360	612	487	304	32	2,837	
HEC "Kaparjel"	0.2	ABV Konstruktion Shpk	10kV	36	56	73	59	42	0	266	
HEC "Letaj"	0.54	Asi-Tre Shpk	10kV	147	77	130	118	75	25	573	
HEC "Nice"	2.27	MP-HEC Shpk	35kV	283	146	206	129	183	65	1,012	
HEC "Meshurdhe"	1.3	SIMA-Com Shpk	10kV	1,144	687	1,010	826	674	96	4,438	
HEC "Thanez"	2	AFRIMI K Shpk	35kV	1,263	516	845	759	820	95	4,298	
HEC "OSOJE"	1.9	OSOJA HPP shpk	35kV	1,382	917	1,335	882	601	252	5,369	
HEC "Voskopoje"	1.9	FAVINA 1 shpk	35kV	1,009	654	910	580	333	146	3,631	
HEC "Nderfushas"	1.125	"SGD Energy" shpk	35kV	227	108	243	203	116	15	911	
HEC "Rreshen"	0.38	Nikolli Energy shpk	10kV	143	128	147	164	140	83	805	
HEC "Gurra"	0.5	Uleza Nderim shpk	6kV	129	115	121	114	117	92	687	
HEC "Vile"	1.994	Hydro Power Panariti shpk	35kV	925	555	894	478	243	64	3,159	
HEC "Dukona"	0.800	Dukona shpk	20kV	72	18	103	78	62	10	343	
HEC "Prevalli"	1.750	Gega-G shpk	35kV	1,172	674	1,085	965	759	184	4,840	
HEC "Camerice"	0.800	Rei Energy shpk	35kV	831	757	826	761	264	0	3,439	
HEC "Stror"	2.000	Era Hydro shpk	35kV	1,692	1,003	1,635	1,231	1,040	148	6,749	
HEC "Mivas"	1.940	Elva 2001 shpk	35kV	535	473	838	569	478	58	2,950	
HEC "Spathare"	1.038	Lucente konencionare shpk	10kV	591	429	177	173	94	90	1,554	
HEC "Miraka"	0.600	Kuarci Blace shpk	10kV	251	108	135	135	90	0	719	
HEC "Shengjun"	2.000	Irarba Energji shpk	10kV	373	103	0	317	322	207	1,323	
HEC "Dobrunje"	0.840	W.T.S. Energji shpk	10kV	293	349	460	466	298	121	1,988	
HEC "Murat"	2	Mateo & Co shpk	10kV	1,252	820	1,168	1,208	712	276	5,436	
HEC "Trojet"	0.9	Troi jet Energji shpk	10kV	294	364	523	458	188	38	1,866	
HEC "Deni"	0.85	ASI TRE shpk	35kV	285	112	315	218	143	24	1,097	
HEC "Kamican"	1.86	IDI 2005 shpk	35kV	1,110	344	764	723	643	0	3,584	

HEC "Vardar"	1.972	Gerti shpk	35kV	1,635	1,531	1,597	1,543	1,539	209	8,054
HEC "Stavec"	6.52	Koka Ergi Stavec shpk	35kV	4,610	2,793	4,025	3,485	2,681	1,181	18,774
HEC "Kalis"	2.138	ERDY Energy shpk	35kV	1,377	990	1,237	1,109	971	419	6,103
HEC "Gjinat"	0.83	Erdi Gas shpk	10kV	221	99	162	134	118	42	777
HEC "Backa 1"	3.36	Kroi Mbret shpk	35kV	2,397	1,195	2,597	1,732	1,060	54	9,036
HEC "Plepi"	2.28	Domi Tec shpk	35kV	377	218	359	318	254	89	1,614
HEC "Zall Xhuxhe 1 & 2"	4.7	Hec Zall Xhuxhe shpk	35kV	1,347	469	766	804	699	207	4,292
HEC "Pishat"	1.911	GRRENTECH ENERGY SYS	35kV	62	60	55	71	163	6	417
HEC "Lingjanca1&2"	2.2	"Rei-Energji" shpk	35kV	959	591	602	432	429	133	3,147
HEC "Guri i Zi"	1.719	"Aris Albania" shpk	35kV	469	182	401	351	405	159	1,966
HEC "Drita"	1.98	"Brecani R.O.S.P." shpk	20kV	982	788	1,197	1,202	934	285	5,388
HEC "EME"	0.45	"Hec EME" shpk	6kV	263	105	141	119	130	24	782
HEC "Terfoje"	1.98	"HEC TERFOJA" sh.p.k	10kV	870	762	948	722	1,565	449	5,316
HEC "Borie Lura 1"	1.8	"AGETA" sh.p.k	20kV	421	176	363	536	320	64	1,880
HEC "Mali"	1.49	"TIRANA ENERGJI" sh.p.k	20kV	1,247	1,381	1,058	908	1,038	905	6,536
HEC "Shelli"	1.518	"ARIS ALBANIA" SHPK	35kV	826	363	674	364	273	29	2,529
HEC "Daznjane"	1.518	"ARIS ALBANIA" SHPK	35kV	370	10	265	469	651	302	2,067
HEC "Vokopola"	2.3	"Vokopola Energji" SHPK	6kV	0	0	0	0	0	25	25
HEC "Shutrej 1&2"	1.97	"ATEANI ENERGY" SHPK	6kV	597	153	485	467	390	91	2,184
HEC KRONZ	0.43	"LASTER ENERGY" SH.P.K	10kV	188	95	114	100	82	66	645
HEC Bushi	0.25	"BUSHI-LUFT" SH.P.K.	10kV	45	16	36	36	32	1	165
HEC Tuc				0	604	596	554	460	82	2,295
HEC Mireshi				1,148	591	794	719	534	300	4,086
HEC Zall-Xhuxhe 2				0	0	0	190	327	68	586
HEC Thirre				0	0	0	0	534	54	588
				140,828	86,917	130,425	114,831	96,439	32,911	602,351

CENTRAL FOTOVOLTAIK				JANAR	SHKURT	MARS	PRILL	MAJ	QERSHOR	6-MIJORI
MW	SUBJEKTI	LIDHJA								
Seman - 2	2	"SEMAN2SUN" sh.p.k	35 kV	215	271	308	345	461	440	2,040
Topojë	2	"SONNE" sh.p.k	35 kV	213	269	300	344	457	436	2,020
Topojë 2	2	"AED SOLAR" sh.p.k	35 kV	213	268	300	341	457	436	2,014
Topojë (Sheq Marinas)	2	"AGE SUNPOWER" sh.p.k	35 kV	212	268	309	342	457	436	2,025
Topojë (Sheq Marinas) 2	2	"SEMAN SUNPOWER" sh.p	35 kV	214	271	311	348	464	441	2,049
Seman solar	2	"SEMANISOLAR" sh.p.k	35 kV	227	277	311	347	442	413	2,016
ES 2019 sh.p.k	2	ES 2019 sh.p.k	35 kV	244	308	361	387	487	459	2,245
SMART WATT sh.p.k	2	SMART WATT sh.p.k	35 kV	248	306	356	381	481	454	2,226
Tren Bilisht	2	"RTS" sh.p.k	35 kV	183	268	304	401	345	410	1,912
STATKRAFT Renewbles albani PV Lundrues banje	2	"STATKRAFT"	35 kV	46	66	84	72	118	294	678
Pv -Plug	2	"AEE" sh.p.k	10 kV	176	237	300	390	442	441	1,986
Korca Photovoltaic Park Shpk/920	2	Korca Photovoltaic Park Shpk	35 kV	190	273	307	407	337	389	1,904
NTSP Shpk/944	2	NTSP Shpk	35 kV	190	275	306	405	351	414	1,941
Sun Beat System Shpk/921	2	Sun Beat System Shpk	35 kV	194	271	304	404	335	416	1,924
Tren Sun System Shpk/919	2	Tren Sun System Shpk	35 kV	194	278	309	410	340	420	1,952
ERENI SOLAR	2	ERENI SOLAR shpk 35 kv	35 kV	250	348	389	518	443	541	2,490
GREEN ENERGY BILISHTI	2	GREEN ENERGY BILISHTI	36 kV	218	318	368	512	432	536	2,384
Total				3,427	4,572	5,228	6,353	6,850	7,376	33,805
EZ-5 Solar Park	10	EZ-5 Solar Park	35 kV	587	782	976	1,130	1,441	1,476	6,391
EZ-5 Solar Park		EZ-5 Solar Park	35 kV	407	544	690	844	1,082	1,133	4,700
FV ALBSOLAR	2	"ALBSOLAR" SH.P.K.	35 kV	185	270	295	366	451	460	2,028
FV SUN ENERGY SOLUTIONS	2	"SUN ENERGY SOLUTION	35 kV	229	306	368	396	504	481	2,283
"2 T & 2 B 1979" sh.p.k.			10 kV	0	487	321	378	451	430	2,067
Prodhim i injektuar nga Veteproduhuesit 35 kV. Treg te Parregulluar, PRO FIX/940			35 kV	0	0	19	28	26	60	132
Prodhim i injektuar nga Veteproduhuesit 20 kV. Treg te Parregulluar			20 kV	0	0	25	17	34	289	364
Zbatim i vendimit te ERE, Nr.19; 20; 21; 22, date 19.02.2024.			35 kV	0	0	3,172	0	0	0	3,172
Tot ne treg te lire				1,407	2,389	5,864	3,158	3,989	4,329	21,135
				4,833	6,961	11,092	9,511	10,839	11,705	54,941
"KARAVASTA SOLAR" sh.p.k ***	140	Centrali Fotovoltaik me vendndodhje në zonën e Remasit – Karavasta, Lushnjë dhe Libofshë, Fier	220 kV	9,699	15,016	20,684	26,190	32,218	31,845	135,653
"KESH" sh.a ***	5.143	Central Fotovoltaik i Digës së Qyrsaqit, Vau i Dejës	221 kV	368	450	561	717	756	805	3,657
	193									
Kapaciteti Instaluar i gjithë prodhuesve në prodhim	2,815	MW								4,318,775

*** Përshirë si sasi energjie në prodhimin neto të KESH sha, sipas kontaktës përkatëse

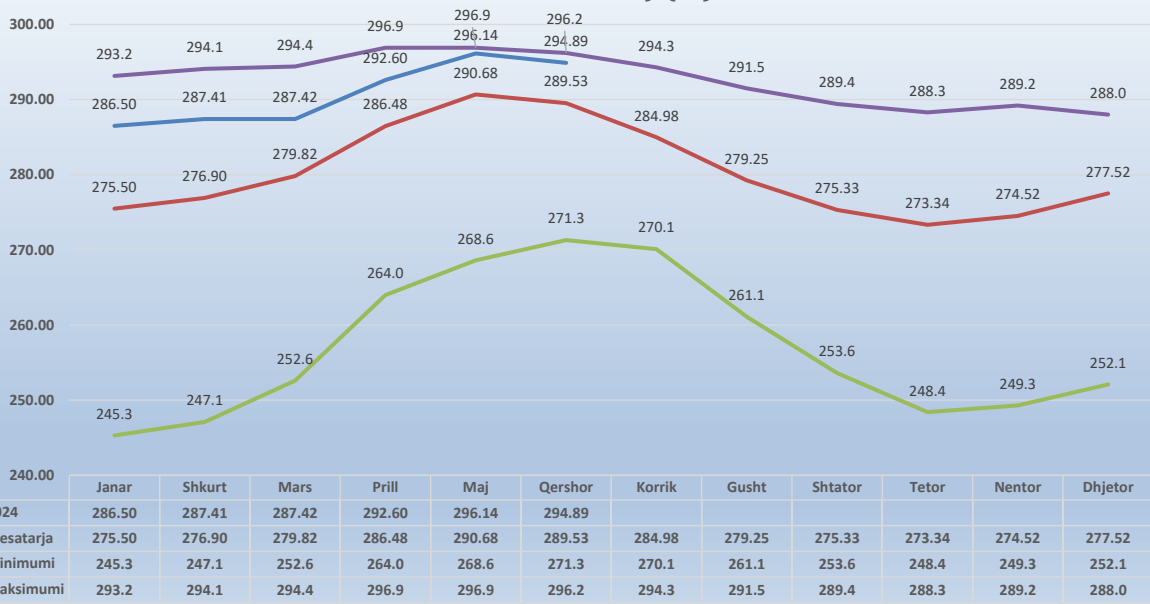
Burimi: OST sha; KESH sha; OSSH sha; FSHU sha; FTL sha; (OSHEE Group sha)

NIVELI I FIERZES 1991-2024

	Janar	Shkurt	Mars	Prill	Maj	Qershor	Korrik	Gusht	Shtator	Tetor	Nentor	Dhjetor
1991	254.4	260.8	268.6	279.9	293.4	296.1	294.0	291.5	289.4	288.3	288.8	285.1
1992	278.0	274.1	268.0	278.8	281.0	279.6	275.2	268.7	263.9	271.4	281.9	280.6
1993	275.2	265.3	264.7	278.5	280.5	277.3	271.0	261.1	253.6	249.9	255.6	270.2
1994	254.4	260.8	268.6	279.9	293.4	296.1	294.0	291.5	289.4	288.3	288.8	285.1
1995	253.8	260.3	262.5	275.3	289.0	288.7	284.5	282.2	288.2	283.8	279.9	287.5
1996	287.1	288.7	286.5	294.7	295.8	293.1	287.6	282.2	285.1	284.3	289.2	291.3
1997	289.4	284.5	281.7	285.2	294.1	292.0	287.0	280.0	272.9	272.4	270.8	277.2
1998	273.7	270.0	265.2	278.9	288.1	287.4	281.8	277.6	276.0	277.1	279.0	277.1
1999	272.7	275.6	281.5	290.5	295.9	293.3	288.3	279.5	271.0	257.6	263.6	276.9
2000	276.4	276.7	276.8	286.9	286.6	280.1	273.5	267.5	261.6	248.4	249.3	252.1
2001	253.6	258.2	275.1	282.9	287.6	283.8	273.7	271.1	269.2	263.6	263.2	252.1
2002	245.3	247.1	252.6	264.0	268.6	271.3	270.1	267.8	274.3	286.1	285.3	284.0
2003	291.1	289.5	286.3	287.0	292.3	290.3	285.9	280.8	276.0	282.6	285.6	283.3
2004	284.7	290.8	293.4	296.0	296.2	296.2	293.1	286.3	281.1	280.0	286.1	288.0
2005	281.2	281.5	293.3	296.1	295.6	294.1	286.7	277.2	266.5	256.9	253.6	279.0
2006	283.5	288.6	294.4	295.9	296.5	295.9	293.8	290.2	285.3	278.7	266.2	256.2
2007	256.1	263.7	272.0	276.8	276.8	274.8	268.5	263.6	261.8	261.1	275.8	282.1
2008	285.1	289.7	290.9	295.5	295.3	295.7	294.3	288.6	283.9	280.9	285.2	286.5
2009	283.6	281.8	283.4	292.5	293.7	292.4	288.0	281.2	276.2	271.6	266.3	280.1
2010	290.1	289.2	293.9	296.0	296.3	294.4	291.8	288.6	284.9	285.2	284.3	287.5
2011	281.6	274.1	275.0	276.6	281.0	286.1	284.7	279.0	273.9	268.2	261.6	264.5
2012	265.8	274.1	262.0	280.2	293.4	294.4	288.4	280.4	261.4	261.6	269.0	276.6
2013	278.3	274.1	294.8	296.9	296.9	294.2	289.7	283.6	280.8	281.4	282.5	276.1
2014	275.1	274.1	274.6	285.3	292.9	294.9	291.7	286.8	285.5	285.0	284.8	286.3
2015	288.7	274.1	292.2	296.3	296.1	293.3	287.5	280.1	272.1	275.4	278.9	275.9
2016	289.9	274.1	291.8	296.5	296.2	295.6	290.5	285.4	283.3	288.4	288.9	281.6
2017	271.5	274.1	280.9	278.7	281.6	272.4	270.2	268.0	271.0	264.6	269.6	289.9
2018	289.7	274.1	295.0	296.5	296.4	296.0	294.0	287.5	277.9	270.2	266.5	267.3
2019	267.3	274.1	272.7	279.9	289.9	292.7	287.6	278.5	274.2	268.6	273.2	275.6
2020	271.6	272.0	283.5	288.6	293.6	291.7	284.6	276.5	273.5	274.1	268.7	272.7
2021	291.7	294.1	292.6	294.3	296.7	291.7	282.7	274.3	271.3	267.7	267.8	275.1
2022	270.7	268.3	260.7	282.5	289.0	288.0	281.5	270.4	271.4	267.9	281.7	291.7
2023	293.2	286.4	291.5	295.6	296.1	296.3	291.4	281.3	270.8	263.5	280.1	284.5
2024	286.5	287.4	287.4	292.6	296.1	294.9						

	Janar	Shkurt	Mars	Prill	Maj	Qershor	Korrik	Gusht	Shtator	Tetor	Nentor	Dhjetor
2024	286.50	287.41	287.42	292.60	296.14	294.89						
Mesatarja	275.50	276.90	279.82	286.48	290.68	289.53	284.98	279.25	275.33	273.34	274.52	277.52
Minimumi	245.3	247.1	252.6	264.0	268.6	271.3	270.1	261.1	253.6	248.4	249.3	252.1
Maksimumi	293.2	294.1	294.4	296.9	296.9	296.2	294.3	291.5	289.4	288.3	289.2	288.0

NIVELI I FIERZES GJATE 2024 KRAHESUAR ME (Min,Maks dhe Mesataren historike) (m)

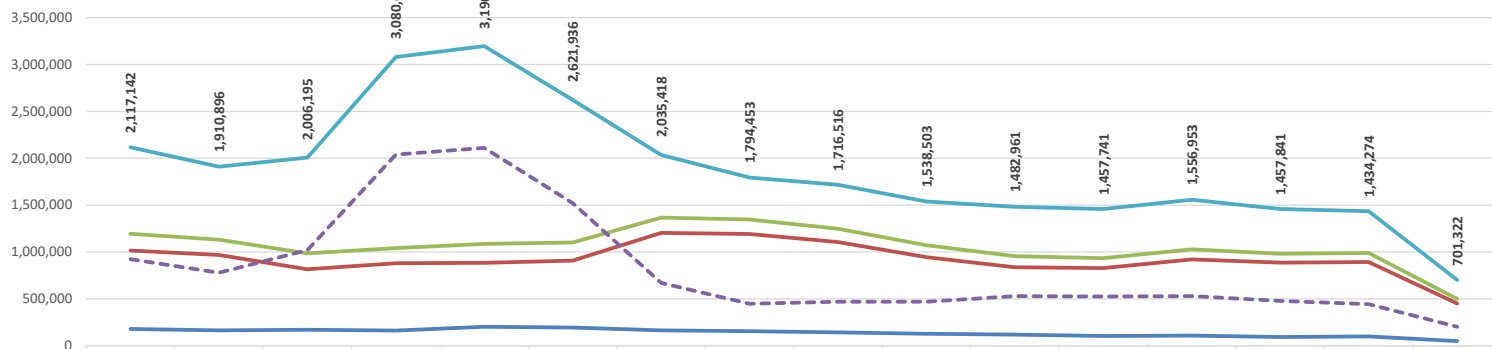


Burimi: KESH sha; OST sha

HUMBJET NE RRJETIN E SHPERNDARJES 2009-2024 (MWh)

	2009	2010	2011	2012	2013	2014	2015	2016	2017	2018	2019	2020	2021	2022	2023	2024 (6 mujor)
HUMBJE TEKNIKE NE TL (N/ST)	178,738	163,546	170,937	161,831	201,684	193,208	162,725	155,629	141,707	125,974	117,739	103,729	107,340	93,331	98,166	48,946
HUMBJE TEKNIKE NE ZONAT E OSSH	1,015,450	968,535	814,826	879,616	884,360	908,416	1,203,793	1,190,872	1,106,007	944,587	836,561	828,906	921,330	886,682	892,334	450,437
TOTALI I HUMBJEVE TEKNIKE OSSH	1,194,188	1,132,081	985,763	1,041,447	1,086,044	1,101,624	1,366,518	1,346,501	1,247,714	1,070,560	954,300	932,635	1,028,670	980,013	990,500	499,383
HUMBJE JOTOKNIKE OSSH	922,954	778,815	1,020,432	2,039,227	2,110,575	1,520,312	668,900	447,952	468,802	467,943	528,661	525,106	528,283	477,828	443,774	201,939
TOTALI I HUMBJEVE OSSH	2,117,142	1,910,896	2,006,195	3,080,674	3,196,618	2,621,936	2,035,418	1,794,453	1,716,516	1,538,503	1,482,961	1,457,741	1,556,953	1,457,841	1,434,274	701,322

HUMBJET NE RRJETIN E SHPERNDARJES 2009-2024(MWh)



	2009	2010	2011	2012	2013	2014	2015	2016	2017	2018	2019	2020	2021	2022	2023	2024 (6 mujor)
HUMBJE TEKNIKE NE TL (N/ST)	178,738	163,546	170,937	161,831	201,684	193,208	162,725	155,629	141,707	125,974	117,739	103,729	107,340	93,331	98,166	48,946
HUMBJE TEKNIKE NE ZONAT E OSSH	1,015,450	968,535	814,826	879,616	884,360	908,416	1,203,793	1,190,872	1,106,007	944,587	836,561	828,906	921,330	886,682	892,334	450,437
TOTALI I HUMBJEVE TEKNIKE OSSH	1,194,188	1,132,081	985,763	1,041,447	1,086,044	1,101,624	1,366,518	1,346,501	1,247,714	1,070,560	954,300	932,635	1,028,670	980,013	990,500	499,383
HUMBJE JOTOKNIKE OSSH	922,954	778,815	1,020,432	2,039,227	2,110,575	1,520,312	668,900	447,952	468,802	467,943	528,661	525,106	528,283	477,828	443,774	201,939
TOTALI I HUMBJEVE OSSH	2,117,142	1,910,896	2,006,195	3,080,674	3,196,618	2,621,936	2,035,418	1,794,453	1,716,516	1,538,503	1,482,961	1,457,741	1,556,953	1,457,841	1,434,274	701,322

Burimi: OSSH sha / (OSHEE Group sha)

Viti 2014	Te arketueshme	Faturuar 2014	Arketimi per faturat e 2014	Arketimi per faturat e 2007-2013	Arketimi total	Te Arketueshme per energjine e faturuar ne vitin 2014	Ndryshimi I gjendes se Llogarite te arketueshme gjate viti 2014	Suarje Detyrimesh me VKM nr 196, dt 03.04.2014
	71,374,447	2	5	7	6=5+7	9=(2-5)	10=(2-5-a)	a
Janar	72,385,326	4,899,949	3,593,288	295,782	3,889,070	3,889,070	1,306,661	1,010,880
Shkurt	73,231,148	4,623,941	1,224,888	2,553,341	3,778,119	3,778,119	3,399,083	845,821
Mars	73,908,562	4,645,564	3,226,836	744,315	3,971,150	3,971,150	1,418,279	674,414
Prill	70,676,446	4,538,921	3,291,580	600,240	3,972,164	3,972,164	1,242,391	3,292,116
Maj	71,545,130	4,190,115	3,245,044	374,413	3,719,457	3,719,457	868,074	(397,423)
Qershore	72,209,337	4,025,464	3,065,233	295,134	3,360,467	3,360,467	959,807	669,807
Korrik	72,816,893	4,097,547	3,184,972	305,088	3,490,060	3,490,060	912,644	607,556
Gusht	73,042,774	4,299,885	3,115,641	311,467	3,427,108	3,427,108	1,156,744	872,891
Shtator	72,227,145	4,065,705	3,343,188	1,069,912	4,413,100	4,413,100	1,167,310	820,325
Tetor	72,630,240	4,280,796	3,647,110	457,224	4,104,334	4,104,334	633,086	103,095
Novendor	72,771,144	4,204,238	3,459,193	904,432	4,363,624	4,363,624	1,045,336	140,904
Dhjetor	71,406,047	4,985,556	4,273,473	2,077,180	6,350,653	6,350,653	712,083	1,365,097
Total		53,157,974	38,770,084	10,068,842	48,838,927	48,838,927	14,387,800	4,287,448

FATURIM-ARKEKTIMET DHE NDRYSHIMI I GJENDES DEBITORE GJATE VITIT 2015 (000/LEKE)

Viti 2015	Te arketueshme	Faturuar 2015	Arketimi per faturat e 2015	Arketimi per faturat e 2007-2014	Arketimi total	Te Arketueshme per energjine e faturuar ne vitin 2015	Ndryshimi I gjendes se Llogarite te arketueshme gjate viti 2015	Suarje Detyrimesh
	71,406,047	2	5	7	6=5+7	9=(2-5)	10=(2-5-a)	a
Janar	65,787,460	2	58,385	5,560,203	5,618,588	5,618,588	(58,383)	5,618,586
Shkurt	59,101,173	2	4,241,484	2,444,805	6,686,289	6,686,289	(4,241,482)	6,686,287
Mars	53,303,725	2	4,666,302	1,123,648	5,790,450	5,790,450	(4,666,300)	5,790,448
Prill	47,129,425	2	4,470,298	365,900	4,836,198	4,836,198	(4,470,296)	4,836,196
Maj	40,663,646	2	4,234,873	504,756	4,739,629	4,739,629	(4,234,871)	4,665,778
Qershore	36,200,965	2	4,081,633	309,420	4,391,053	4,391,053	(4,081,631)	4,462,681
Korrik	31,391,091	2	4,246,167	372,276	4,618,743	4,618,743	(4,246,165)	4,809,874
Gusht	26,138,833	2	4,481,964	351,383	4,833,347	4,833,347	(4,481,962)	5,172,758
Shtator	21,230,540	2	4,700,033	293,262	4,993,295	4,993,295	(4,700,033)	4,993,293
Tetor	21,053,851	4,683,924	4,541,794	308,818	4,850,612	4,850,612	142,130	166,689
Novendor	21,726,096	4,991,483	4,020,208	298,490	4,318,698	4,318,698	971,335	672,845
Dhjetor	23,570,251	5,872,243	4,750,640	277,420	5,028,688	5,028,688	1,121,295	843,555
Total		15,547,727	48,491,589	12,225,002	60,716,591	60,716,591	32,943,362	3,666,932

FATURIM-ARKEKTIMET DHE NDRYSHIMI I GJENDES DEBITORE GJATE VITIT 2016 (000/LEKE)

Viti 2016	Te arketueshme	Faturuar 2016	Arketimi per faturat e 2016	Arketimi per faturat e 2007-2015	Arketimi total	Te Arketueshme per energjine e faturuar ne vitin 2016	Ndryshimi I gjendes se Llogarite te arketueshme gjate viti 2016	Suarje Detyrimesh
	68,803,189	2	5	7	6=5+7	9=(2-5)		a-b
Janar	69,383,532	5,987,071	11,010	5,396,619	5,407,628	5,407,628	6,276,962	580,343
Shkurt	69,618,271	5,445,593	3,744,660	1,455,075	5,199,735	5,199,735	1,700,824	234,739
Mars	69,571,158	5,513,517	4,673,435	531,153	5,204,588	5,204,588	840,082	368,857
Prill	69,788,727	4,826,977	4,621,557	333,851	4,955,408	4,955,408	185,420	138,411
Maj	67,042,795	4,835,733	4,504,256	276,918	4,781,174	4,781,174	331,477	2,745,932
Qershore	67,801,889	4,252,728	4,203,847	245,816	4,449,663	4,449,663	321,881	458,794
Korrik	68,211,673	5,241,459	4,309,083	231,259	4,540,342	4,540,342	4,521,176	628,117
Gusht	68,364,412	5,309,834	4,709,986	267,109	5,067,095	5,067,095	509,848	243,739
Shtator	68,350,354	4,844,483	4,650,851	207,690	4,858,541	4,858,541	193,633	14,058
Tetor	68,499,705	4,834,628	4,480,377	203,901	4,684,278	4,684,278	844,252	149,451
Novendor	69,272,006	5,296,378	4,175,064	195,813	4,370,877	4,370,877	1,063,587	372,231
Dhjetor	70,720,061	6,410,881	4,854,305	308,411	5,063,116	5,063,116	1,555,976	1,347,565
Total		63,012,893	49,129,839	9,537,411	58,667,251	58,667,251	13,883,054	2,800,490

FATURIM-ARKEKTIMET DHE NDRYSHIMI I GJENDES DEBITORE GJATE VITIT 2017 (000/LEKE)

Viti 2017	Te arketueshme	Faturuar 2017	Arketimi per faturat e 2017	Arketimi per faturat e 2007-2016	Arketimi total	Te Arketueshme per energjine e faturuar ne vitin 2017	Ndryshimi I gjendes se Llogarite te arketueshme gjate viti 2017	Suarje Detyrimesh
	70,720,061	2	5	7	6=5+7	9=(2-5)		
Janar	71,449,571	6,192,711	2,680	5,460,521	5,463,201	5,463,201	6,190,031	729,510
Shkurt	71,348,179	5,323,227	1,831,606	1,601,113	5,224,919	5,224,919	1,499,921	101,392
Mars	70,863,992	5,141,318	4,963,971	461,534	5,425,505	5,425,505	1,752,377	484,147
Prill	70,633,942	4,857,464	4,525,615	331,899	4,857,514	4,857,514	331,899	80
Maj	70,398,335	4,667,810	4,599,520	533,697	5,133,217	5,133,217	68,290	465,407
Qershore	70,787,603	4,675,024	4,655,720	331,137	4,986,857	4,986,857	308,284	389,068
Korrik	71,230,868	5,435,003	4,599,633	309,189	4,909,244	4,909,244	835,375	533,255
Gusht	71,661,546	5,635,939	4,996,203	399,038	5,395,241	5,395,241	639,776	340,678
Shtator	71,152,686	4,824,463	5,046,439	296,534	5,342,973	5,342,973	222,026	506,860
Tetor	71,047,097	4,902,445	4,298,610	247,912	4,546,522	4,546,522	142,834	165,089
Novendor	72,031,524	5,527,300	4,313,657	239,722	4,553,379	4,553,379	1,213,649	983,277
Dhjetor	72,848,682	6,347,220	5,153,618	376,452	5,530,070	5,530,070	1,193,611	817,158
Total								

FATURIM-ARKEKTIMET DHE NDRYSHIMI I GJENDES DEBITORE GJATE VITIT 2018 (000/LEKE)

Viti 2018	Te arketueshme	Faturuar 2018	Arketimi per faturat e 2018	Arketimi per faturat e 2007-2017	Arketimi total	Te Arketueshme per energjine e faturuar ne vitin 2018	Ndryshimi I gjendes se Llogarite te arketueshme gjate viti 2018	Suarje Detyrimesh
	72,848,682	2	5	7	6=5+7	9=(2-5)		
Janar	72,669,803	5,939,299	6,220	6,085,898	6,118,178	6,118,178	5,877,019	178,779
Shkurt	74,671,709	5,685,334	3,857,605	3,823,131	5,683,739	5,683,739	8,827,729	1,905
Mars	72,336,005	5,680,352	5,325,171	690,885	6,016,056	6,016,056	335,181	335,704
Prill	71,388,405	4,671,224	4,371,530	349,694	4,721,224	4,721,224	520,070	947,690
Maj	70,904,009	4,734,173	4,589,252	376,617	4,965,869	4,965,869	488,479	488,297
Qershore	71,142,033	4,976,161	4,305,211	345,510	4,650,721	4,650,721	580,940	337,435
Korrik	71,320,917	5,031,874	4,895,706	329,195	5,224,901	5,224,901	508,078	178,883
Gusht	71,608,055	5,805,751	5,141,751	376,861	5,518,612	5,518,612	664,000	287,139
Shtator	71,545,095	5,041,459	5,088,603	312,209	5,400,812	5,400,812	300,791	351,081
Tetor	70,741,012	4,975,893	5,182,026	327,829	5,489,855	5,489,855	186,133	513,982
Novendor	71,270,659	5,118,350	4,317,124	471,580	4,788,703	4,788,703	1,001,226	529,647
Dhjetor	71,896,707	6,625,289	5,579,121	420,120	5,999,241	5,999,241	1,046,168	626,048
Total								

FATURIM-ARKEKTIMET DHE NDRYSHIMI I GJENDES DEBITORE GJATE VITIT 2019 (000/LEKE)

Viti 2019	Te arketueshme	Faturuar 2019	Arketimi per faturat e 2019	Arketimi per faturat e 2007-2018	Arketimi total	Te Arketueshme per energjine e faturuar ne vitin 2019	Ndryshimi I gjendes se Llogarite te arketueshme gjate viti 2019	Suarje Detyrimesh
	71,896,707	2	5	7	6=5+7	9=(2-5)		
Janar	72,294,758	6,710,114	11,908	6,000,155	6,012,063	6,012,063	6,698,206	698,051
Shkurt	72,200,340	5,819,929	4,371,236	1,842,611	6,214,348	6,214,348	1,448,193	394,418
Mars	71,887,840	5,496,920	5,066,276	743,405	5,809,681	5,809,681	430,545	312,500
Prill	71,416,659	5,183,722	5,183,086	443,017	5,627,003	5,627,003	527,864	272,864
Maj	71,210,144	5,075,626	4,909,283	372,728	5,282,011	5,282,011	166,415	206,415
Qershore	71,763,430	5,324,553	4,464,984	306,283	4,771,267	4,771,267	859,569	553,286
Korrik	71,886,698	5,684,531	5,061,596	499,667	5,561,263	5,561,263	624,935	123,268
Gusht	72,343,096	6,100,924	5,315,417	328,709	5,644,126	5,644,126	785,507	456,798
Shtator	71,822,038	5,207,417	5,446,825	282,540	5,729,365	5,729,365	239,208	521,458
Tetor	71,361,843	4,992,973	5,051,814	401,354	5,394,337	5,394,337	28,841	460,195
Novendor	72,178,116	5,292,443	4,427,863	228,207	4,656,070	4,656,070	1,044,580	810,273
Dhjetor	72,571,675	6,241,067	5,818,118	338,000	6,156,118	6,156,118	856,208	365,559
Total								

FATURIM-ARKEKTIMET DHE NDRYSHIMI I GJENDES DEBITORE GJATE VITIT 2020 (000/LEKE)

Viti 2020	Te arketueshme	Faturuar 2020	Arketimi per faturat e 2020	Arketimi per faturat e 2007-2019	Arketimi total	Te Arketueshme per energjine e faturuar ne vitin 2020	Ndryshimi I gjendes se Llogarite te arketueshme gjate viti 2020	Suarje Detyrimesh
	72,571,657							

Qershor	75,924,651	5,548,298	5,417,458	328,999	5,746,417	139,840	198,119	0
Korrik	76,924,743	6,377,074	5,053,270	324,612	5,377,882	1,324,705	1,000,093	0
Gusht	77,478,064	6,554,052	5,648,400	352,211	6,000,611	4,901,630	552,321	0
Shtator	76,933,233	5,401,032	5,087,762	258,102	5,345,864	286,370	544,832	0
Tetor	76,284,525	5,544,032	5,739,826	452,913	6,192,739	195,794	648,707	0
Novitor	76,704,823	5,794,416	5,080,754	293,364	5,374,118	713,662	420,298	0
Dhjetor	78,394,397	7,272,744	5,583,186	299,064	5,883,170	1,989,657	1,689,574	0
Total								

FATURIM-ARKETIMET DHE NDORYSHIMI I GJENDJES DEBITORE GJTE VITIT 2022 (0001.0000)

Viti 2022	Te arketueshme	Faturuar 2022	arketimi per fakturat e 2022	Arketimi per fakturat e 2007-2022	Arketimi total	Te Arketueshme per energjine e faturuar ne vitin 2022	Ndryshimi I gjendjes se Llogarive te arketueshme gjate vitit 2022	Suarje Detyrimesh
Janar	78,394,397	2	5	7	6=5+7	9=(2-5)		
Janar	79,437,476	7,902,272	4,793,436	2,065,257	6,859,193	3,108,836	1,043,079	0
Shkurt	80,288,239	7,515,298	4,569,851	3,094,855	6,664,376	3,946,187	851,853	0
Mars	80,426,273	7,857,071	6,691,413	1,028,214	7,719,627	1,165,658	137,444	0
Prill	79,617,380	6,186,945	6,531,117	464,721	6,995,838	344,172	808,893	0
Maj	79,499,359	6,188,303	5,969,488	356,836	6,326,324	218,815	118,021	0
Qershor	79,997,520	6,553,744	5,610,349	445,214	6,055,563	943,385	498,162	0
Korrik	80,005,681	6,553,744	6,230,846	314,737	6,545,583	323,808	8,161	0
Gusht	79,791,653	7,358,491	7,103,150	469,370	7,572,519	255,341	214,028	0
Shtator	78,547,734	6,162,925	7,085,112	394,733	7,499,844	842,187	1,236,919	0
Tetor	77,962,798	5,548,663	6,104,500	335,749	6,440,249	356,187	591,935	0
Novitor	78,481,014	6,402,315	798,011	5,186,087	5,984,099	5,704,303	518,216	0
Dhjetor	79,249,438	7,458,986	6,200,688	489,874	6,690,562	1,258,298	768,423	0
Total		82,089,187			81,234,146			

FATURIM-ARKETIMET DHE NDORYSHIMI I GJENDJES DEBITORE GJTE VITIT 2023 (0001.0000)

Viti 2023	Te arketueshme	Faturuar 2023	arketimi per fakturat e 2023	Arketimi per fakturat e 2007-2022	Arketimi total	Te Arketueshme per energjine e faturuar ne vitin 2023	Ndryshimi I gjendjes se Llogarive te arketueshme gjate vitit 2023	Suarje Detyrimesh
Janar	79,910,252	2	5	7	6=5+7	9=(2-5)		
Janar	80,265,490	7,236,860	17,571	6,864,050	6,881,621	7,219,288	355,238	0
Shkurt	80,928,747	7,477,014	4,674,206	2,139,553	6,813,758	2,802,809	663,256	0
Mars	80,658,935	6,588,875	6,660,084	831,603	7,491,687	71,289	902,812	0
Prill	80,223,225	6,321,511	5,757,211	567,010	6,324,221	564,200	197,290	0
Maj	79,402,801	5,993,172	6,505,113	308,483	6,813,596	511,941	820,424	0
Qershor	79,665,073	6,074,125	5,550,743	261,110	5,811,853	523,382	262,272	0
Korrik	81,307,082	7,236,435	5,415,995	267,632	5,683,627	1,909,640	1,642,009	0
Gusht	81,148,340	7,281,460	6,976,104	464,097	7,440,201	305,356	158,741	0
Shtator	80,122,629	6,339,551	6,941,811	423,452	7,365,263	602,259	1,025,711	0
Tetor	78,896,288	5,987,458	6,799,334	414,465	7,213,799	5,572,992	1,226,341	0
Novitor	79,489,066	6,806,839	5,995,279	217,852	6,213,141	6,588,877	593,698	0
Dhjetor	80,898,725	7,990,009	6,461,676	119,594	6,581,270	7,870,415	1,408,739	0
Total		81,423,530			80,435,057			

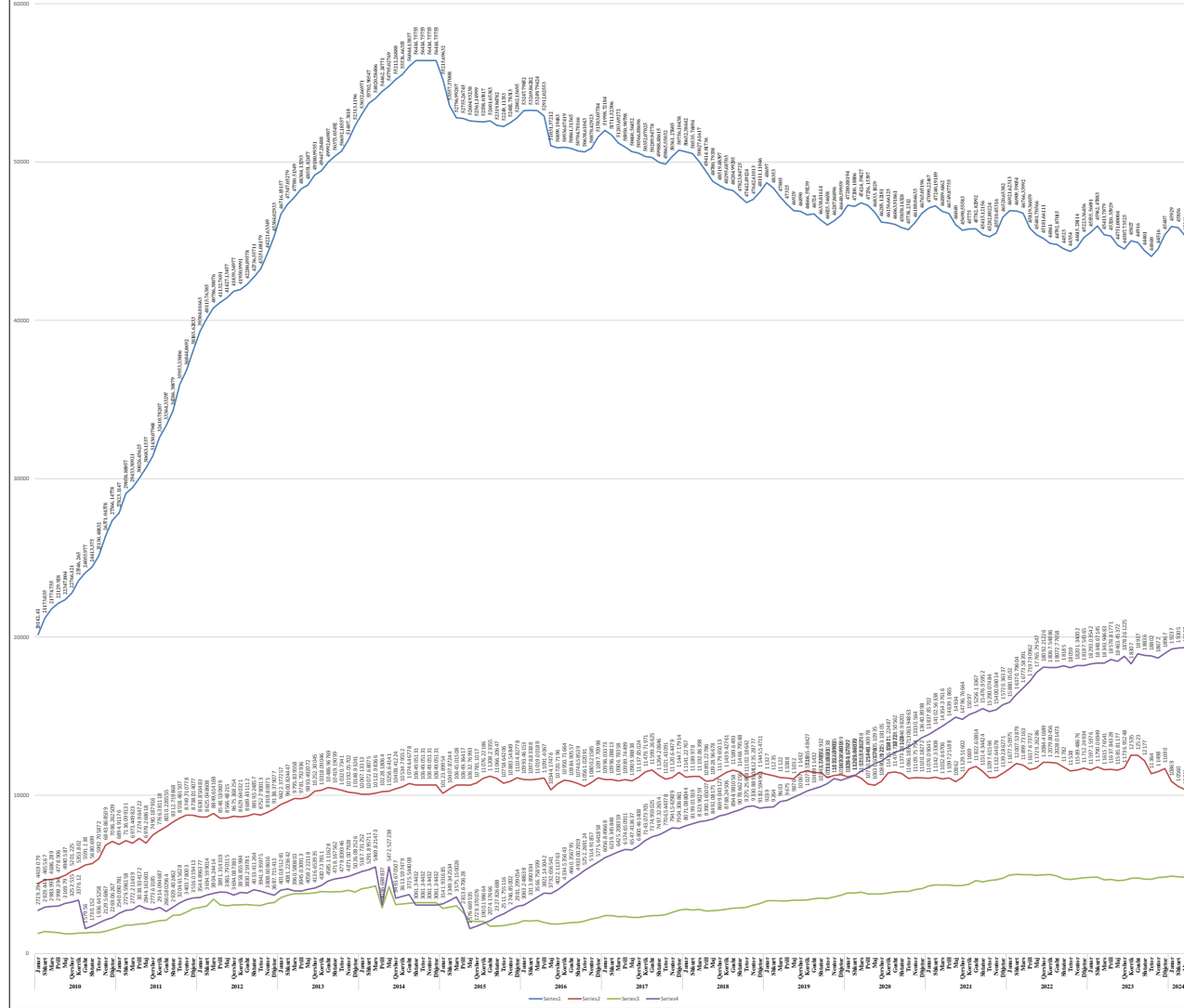
FATURIM-ARKETIMET DHE NDORYSHIMI I GJENDJES DEBITORE GJTE VITIT 2024 (0001.0000)

Viti 2024	Te arketueshme	Faturuar 2024	arketimi per fakturat e 2024	Arketimi per fakturat e 2007-2022	Arketimi total	Te Arketueshme per energjine e faturuar ne vitin 2024	Ndryshimi I gjendjes se Llogarive te arketueshme gjate vitit 2024	Suarje Detyrimesh
Janar	80,898,725	2	5	7	6=5+7	9=(2-5)		
Janar	80,868,782	7,374,630	43,814	7,300,873	7,344,687	7,340,816	29,843	0
Shkurt	80,512,066	6,650,006	4,919,897	2,086,825	7,006,722	1,730,109	356,716	0
Mars	79,792,096	6,078,325	5,882,823	915,472	6,798,295	195,502	719,970	0
Prill	78,750,197	5,298,149	5,791,231	548,817	6,340,048	493,082	1,041,899	0
Maj	78,164,922	5,291,466	5,330,758	545,985	5,876,743	39,290	585,274	0
Qershor	78,955,226	5,993,682	4,859,817	253,061	5,112,878	1,043,865	790,894	0
Korrik								0
Gusht								0
Shtator								0
Tetor								0
Novitor								0
Dhjetor								0
Total		36,596,358			38,479,570			

ECURIA E GJENDJES DEBITORE NDAJ OPERATORIT TË SHËRNDARJES SIPAS KATEGORIVE 2010-2024 (000 000/LEKË)

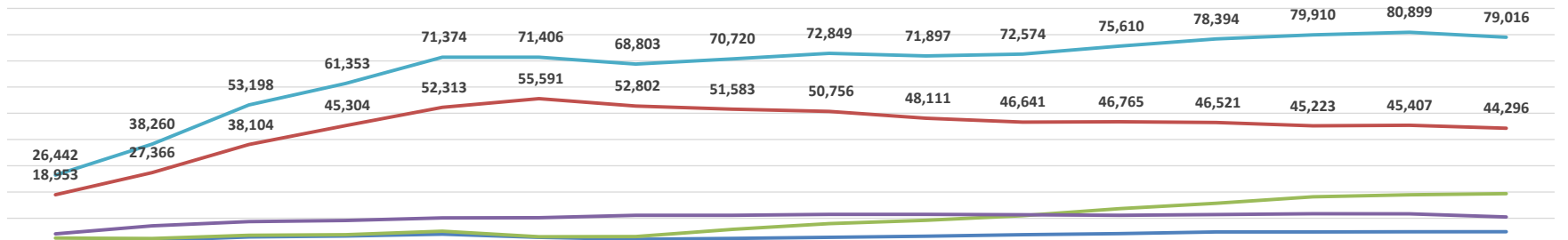
Vite	2010	2011	2012	2013	2014	2015	2016	2017	2018	2019	2020	2021	2022	2023	2024
Shërbime	1,230	1,237	1,447	1,447	1,447	1,447	1,447	1,447	1,447	1,447	1,447	1,447	1,447	1,447	1,447
Telekomunikime	1,230	1,237	1,447	1,447	1,447	1,447	1,447	1,447	1,447	1,447	1,447	1,447	1,447	1,447	1,447
Media	1,230	1,237	1,447	1,447	1,447	1,447	1,447	1,447	1,447	1,447	1,447	1,447	1,447	1,447	1,447
Transport	1,230	1,237	1,447	1,447	1,447	1,447	1,447	1,447	1,447	1,447	1,447	1,447	1,447	1,447	1,447
Ujësjellës	1,230	1,237	1,447	1,447	1,447	1,447	1,447	1,447	1,447	1,447	1,447	1,447	1,447	1,447	1,447
Elektricitet	1,230	1,237	1,447	1,447	1,447	1,447	1,447	1,447	1,447	1,447	1,447	1,447	1,447	1,447	1,447
Gas	1,230	1,237	1,447	1,447	1,447	1,447	1,447	1,447	1,447	1,447	1,447	1,447	1,447	1,447	1,447
Ujë	1,230	1,237	1,447	1,447	1,447	1,447	1,447	1,447	1,447	1,447	1,447	1,447	1,447	1,447	1,447
Telekomunikime	1,230	1,237	1,447	1,447	1,447	1,447	1,447	1,447	1,447	1,447	1,447	1,447	1,447	1,447	1,447
Media	1,230	1,237	1,447	1,447	1,447	1,447	1,447	1,447	1,447	1,447	1,447	1,447	1,447	1,447	1,447
Transport	1,230	1,237	1,447	1,447	1,447	1,447	1,447	1,447	1,447	1,447	1,447	1,447	1,447	1,447	1,447
Ujësjellës	1,230	1,237	1,447	1,447	1,447	1,447	1,447	1,447	1,447	1,447	1,447	1,447	1,447	1,447	1,447
Elektricitet	1,230	1,237	1,447	1,447	1,447	1,447	1,447	1,447	1,447	1,447	1,447	1,447	1,447	1,447	1,447
Gas	1,230	1,237	1,447	1,447	1,447	1,447	1,447	1,447	1,447	1,447	1,447	1,447	1,447	1,447	1,447
Ujë	1,230	1,237	1,447	1,447	1,447	1,447	1,447	1,447	1,447	1,447	1,447	1,447	1,447	1,447	1,447

ECURIA E GJENDJES DEBITORE NDAJ OPERATORIT TË SHËRNDARJES SIPAS KATEGORIVE 2010-2024 (000 000/LEKË)



	31.12.2009	31.12.2010	31.12.2011	31.12.2012	31.12.2013	31.12.2014	31.12.2015	31.12.2016	31.12.2017	31.12.2018	31.12.2019	31.12.2020	31.12.2021	31.12.2022	31.12.2023	30.06.2024
Buxhetore	988	1,538	2,841	3,223	3,886	2,691	1,915	2,264	2,741	3,157	3,681	4,104	4,761	4,787	4,835	4,847
Familjare	18,953	27,366	38,104	45,304	52,313	55,591	52,802	51,583	50,756	48,111	46,641	46,765	46,521	45,223	45,407	44,296
JoBuxhetore	2,468	2,269	3,516	3,688	5,026	2,964	2,981	5,776	7,904	9,183	10,947	13,641	15,720	18,188	18,967	19,369
Privat	4,033	7,086	8,738	9,138	10,149	10,161	11,105	11,098	11,447	11,446	11,304	11,100	11,393	11,712	11,690	10,505
Total	26,442	38,260	53,198	61,353	71,374	71,406	68,803	70,720	72,849	71,897	72,574	75,610	78,394	79,910	80,899	79,016

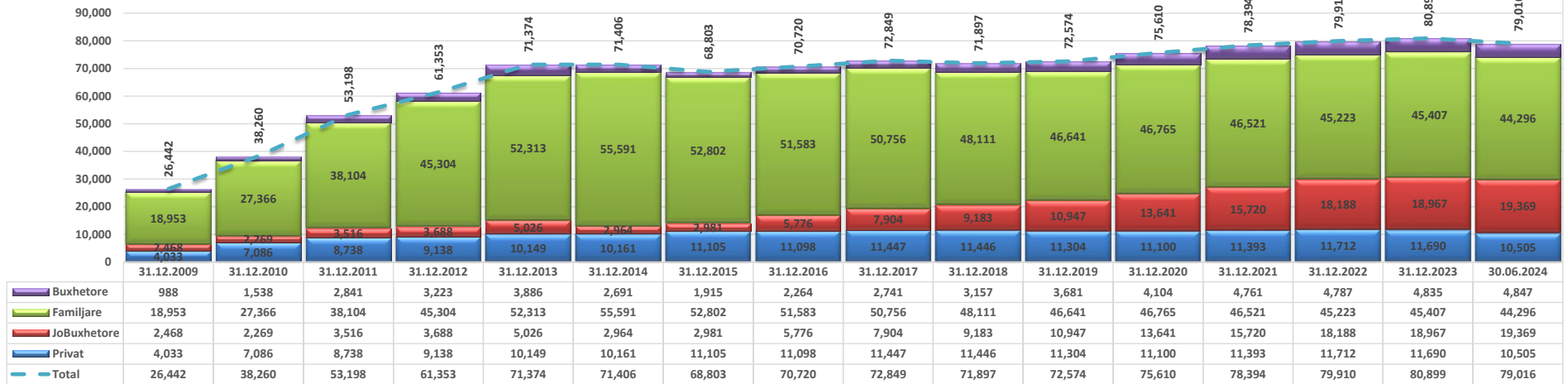
**ECURIA E GJËNDJES DEBITORE NDAJ OPERATORIT TË SHPËRNDARJES
31 DHJETOR 2009 - 31 QERSHOR 2024 SIPAS KLIENTËVE
(000 000 LEKË)**



	31.12.2009	31.12.2010	31.12.2011	31.12.2012	31.12.2013	31.12.2014	31.12.2015	31.12.2016	31.12.2017	31.12.2018	31.12.2019	31.12.2020	31.12.2021	31.12.2022	31.12.2023	30.06.2024
Buxhetore	988	1,538	2,841	3,223	3,886	2,691	1,915	2,264	2,741	3,157	3,681	4,104	4,761	4,787	4,835	4,847
Familjare	18,953	27,366	38,104	45,304	52,313	55,591	52,802	51,583	50,756	48,111	46,641	46,765	46,521	45,223	45,407	44,296
JoBuxhetore	2,468	2,269	3,516	3,688	5,026	2,964	2,981	5,776	7,904	9,183	10,947	13,641	15,720	18,188	18,967	19,369
Privat	4,033	7,086	8,738	9,138	10,149	10,161	11,105	11,098	11,447	11,446	11,304	11,100	11,393	11,712	11,690	10,505
Total	26,442	38,260	53,198	61,353	71,374	71,406	68,803	70,720	72,849	71,897	72,574	75,610	78,394	79,910	80,899	79,016

	31.12.2009	31.12.2010	31.12.2011	31.12.2012	31.12.2013	31.12.2014	31.12.2015	31.12.2016	31.12.2017	31.12.2018	31.12.2019	31.12.2020	31.12.2021	31.12.2022	31.12.2023	30.06.2024
Privat	4,033	7,086	8,738	9,138	10,149	10,161	11,105	11,098	11,447	11,446	11,304	11,100	11,393	11,712	11,690	10,505
JoBuxhetore	2,468	2,269	3,516	3,688	5,026	2,964	2,981	5,776	7,904	9,183	10,947	13,641	15,720	18,188	18,967	19,369
Familjare	18,953	27,366	38,104	45,304	52,313	55,591	52,802	51,583	50,756	48,111	46,641	46,765	46,521	45,223	45,407	44,296
Buxhetore	988	1,538	2,841	3,223	3,886	2,691	1,915	2,264	2,741	3,157	3,681	4,104	4,761	4,787	4,835	4,847
Total	26,442	38,260	53,198	61,353	71,374	71,406	68,803	70,720	72,849	71,897	72,574	75,610	78,394	79,910	80,899	79,016

ECURIA E GJËNDJES DEBITORE NDAJ OPERATORIT TË SHPËRNDARJES
31 DHJETOR 2009 - 31 QERSHOR 2024 SIPAS KLIENTËVE
(000 000 LKË)

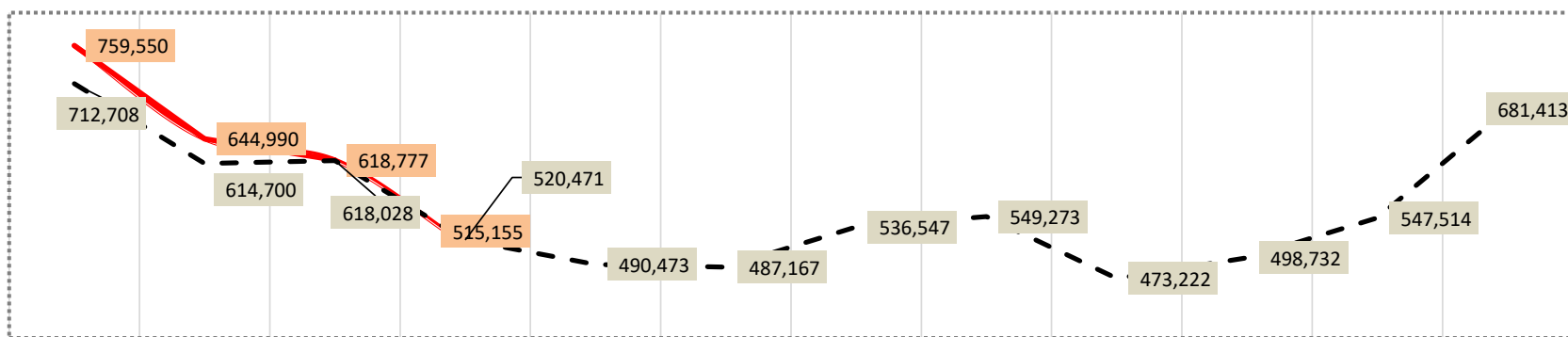


Burimi: FSHU sha / (OSHEE Group sha)

	Janar	Shkurt	Mars	Prill	Maj	Qershor	Korrik	Gusht	Shtator	Tetor	Nentor	Dhjetor	VITI
2009	644,987	568,719	589,279	462,709	448,118	427,694	467,863	493,772	439,604	489,635	557,554	639,797	6,229,731
2010	675,343	608,940	610,583	506,275	476,500	464,120	499,241	512,024	460,893	509,793	532,126	660,665	6,516,503
2011	708,264	623,208	634,087	536,286	533,564	495,139	545,315	567,282	512,979	551,132	619,655	710,870	7,037,781
2012	733,973	680,054	596,982	537,950	483,891	489,723	536,891	540,566	469,527	484,706	548,289	749,398	6,851,949
2013	743,846	665,392	673,578	545,600	502,945	511,390	546,696	565,789	493,056	532,555	589,808	774,403	7,145,060
2014	733,468	631,678	645,837	578,948	541,016	501,088	530,554	556,098	492,427	537,280	546,419	640,431	6,935,244
2015	686,041	591,978	594,775	514,282	472,405	465,730	536,160	529,208	459,012	476,969	519,281	649,026	6,494,867
2016	671,884	559,772	573,419	469,803	477,468	463,248	509,916	514,034	451,153	480,236	540,024	688,760	6,399,717
2017	715,886	562,270	545,214	493,731	475,055	485,386	529,805	543,145	451,103	482,629	546,256	667,841	6,498,322
2018	659,778	590,823	597,595	468,417	467,468	468,885	508,892	539,134	465,468	471,407	517,882	681,162	6,436,911
2019	735,813	586,992	559,331	500,485	501,061	500,729	533,842	565,788	471,684	472,833	507,920	639,953	6,576,432
2020	708,611	607,803	589,581	489,236	464,183	463,789	527,801	533,336	482,358	506,280	562,127	669,977	6,605,082
2021	724,554	629,962	662,183	590,810	504,970	519,563	591,485	603,872	485,288	523,606	552,840	747,790	7,136,936
2022	774,084	656,456	698,991	556,264	504,224	525,509	591,875	587,527	481,886	480,961	536,263	650,564	7,044,604
2023	774,084	656,456	698,991	556,264	504,224	525,509	591,875	587,527	481,886	480,961	536,263	650,564	7,044,604
2024	759,550	644,990	618,777	515,155	499,220	551,723							

	Janar	Shkurt	Mars	Prill	Maj	Qershor	Korrik	Gusht	Shtator	Tetor	Nentor	Dhjetor
Mesatarja	712,708	614,700	618,028	520,471	490,473	487,167	536,547	549,273	473,222	498,732	547,514	681,413
2024	759,550	644,990	618,777	515,155	499,220	551,723						

MESATARJA 14 VJEÇARE E ENERGJISË TOTALE NË RRJETIN E SHPËRNDARJES SIPAS MUAJVE TË VITIT (MWh) KRAHASUAR ME VITIN 2024



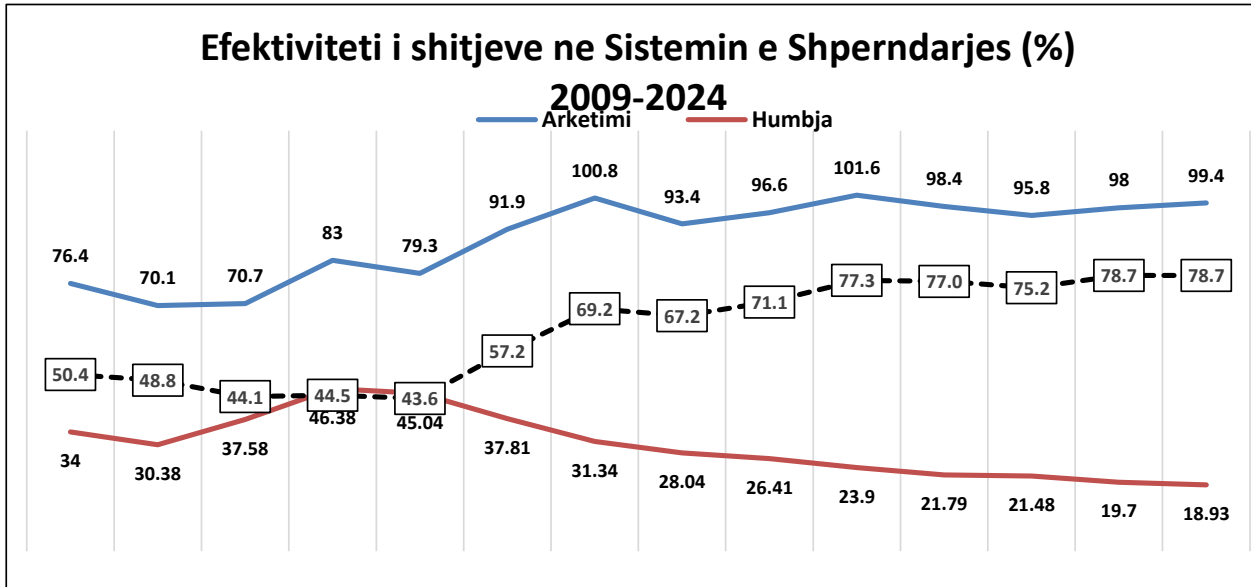
NIVELI I HUMBJEVE (%) 2009-2024												
	Janar	Shkurt	Mars	Prill	Maj	Qershor	Korrik	Gusht	Shtator	Tetor	Nentor	Dhjetor
2009	40.75	37.05	38.05	32.93	33.44	30.75	32.60	30.20	25.34	30.67	33.44	36.89
2010	38.62	35.41	36.90	31.37	35.17	31.45	26.94	29.69	21.47	20.61	22.16	29.05
2011	55.55	38.00	36.95	23.11	24.85	21.29	21.88	19.41	22.95	25.15	32.20	35.70
2012	35.72	59.16	55.23	45.41	38.87	39.77	45.51	45.51	42.09	35.53	41.89	49.32
2013	51.12	48.71	48.29	39.66	39.52	40.33	43.33	38.50	35.08	45.98	48.08	53.04
2014	47.00	42.14	42.78	35.69	36.85	34.10	36.59	36.36	31.67	34.52	32.88	37.54
2015	36.68	31.82	32.88	30.54	31.24	28.60	30.62	29.29	25.30	29.92	30.82	34.50
2016	34.69	29.00	29.93	26.07	26.97	24.35	25.97	25.15	22.12	27.11	29.30	30.99
2017	33.50	27.63	28.66	25.81	25.88	28.31	24.69	23.29	19.79	23.76	23.55	27.90
2018	30.65	24.91	27.22	23.33	23.03	20.76	21.46	20.77	19.32	21.53	22.73	26.70
2019	29.25	23.21	26.5	21.36	22.10	19.92	20.42	19.81	17.54	20.40	21.58	24.76
2020	28.22	21.61	28.36	17.39	19.10	18.65	19.69	18.87	16.80	21.21	22.79	20.49
2021	27.87	20.1	25.92	21.08	17.92	18.34	18.75	17.93	16.22	18.56	19.88	20.25
2022	28.42	19.66	23.68	18.24	17.08	17.30	18.42	16.81	14.94	18.36	18.38	19.76
2023	25.79	19.06	21.05	18.65	16.68	16.04	17.48	16.17	14.80	17.62	18.20	21.52
2024	21.28	16.80	19.38	16.67	15.94	16.06						

Niveli i Arketimeve (%) 2009-2024												
	Janar	Shkurt	Mars	Prill	Maj	Qershor	Korrik	Gusht	Shtator	Tetor	Nentor	Dhjetor
2009	69.32	85.95	74.38	86.58	86.31	76.37	75.40	72.46	83.20	80.82	61.77	70.01
2010	55.37	66.28	86.63	89.46	86.70	79.42	74.84	124.98	84.20	70.81	56.15	66.48
2011	67.26	57.61	87.66	71.61	96.73	73.00	65.00	81.00	66.00	63.86	51.47	87.30
2012	59.80	79.20	78.50	78.00	94.70	83.50	91.60	102.90	74.00	98.00	72.60	78.00
2013	61.40	63.70	86.20	80.70	79.10	69.60	87.90	90.10	78.50	84.30	89.00	102.00
2014	84.90	77.10	85.90	85.50	81.90	80.20	86.70	83.60	102.60	101.00	101.90	141.00
2015	112.70	120.50	103.70	86.60	95.70	97.10	98.40	104.70	95.30	100.30	92.20	100.70
2016	92.10	87.00	95.60	90.10	99.10	92.00	94.20	96.70	91.50	96.70	90.30	96.70
2017	85.20	87.60	105.70	94.50	105.70	91.80	104.80	97.40	94.60	103.80	92.70	100.10
2018	96.39	95.69	105.82	98.92	111.64	100.16	105.00	102.12	93.03	108.76	96.24	108.94
2019	90.7	92.6	99.8	102.4	102.50	94.00	104.40	99.30	93.90	104.70	89.60	110.70
2020	91.4	91.6	77.5	106.8	101.80	102.20	96.80	95.30	96.60	101.10	91.50	101.80
2021	86.4	88.9	102.1	91	101.20	110.70	96.90	94.10	90.70	114.70	96.90	101.50
2022	90.6	84.3	102.7	90.5	98.00	97.90	99.90	105.00	100.60	104.50	102.30	102.90
2023	92.3	94.2	100.2	92.9	113.7	95.70	93.60	101.60	101.20	113.80	103.80	96.70
2024	92	95	101.2	104.3	110.9	96.60						

Efektiviteti i shitjeve (%) 2009-2024												
	Janar	Shkurt	Mars	Prill	Maj	Qershor	Korrik	Gusht	Shtator	Tetor	Nentor	Dhjetor
2009	41.1%	46.8%	53.6%	57.9%	50.8%	52.2%	48.8%	50.6%	62.1%	56.0%	41.1%	44.2%
2010	34.0%	56.0%	56.4%	59.5%	51.5%	51.3%	91.3%	87.9%	66.1%	56.2%	43.7%	47.2%
2011	29.9%	54.3%	45.2%	74.4%	54.9%	51.2%	63.3%	65.3%	50.9%	47.8%	34.9%	56.1%
2012	38.4%	32.1%	34.9%	51.7%	51.0%	55.2%	56.1%	56.1%	42.9%	63.2%	42.2%	39.5%
2013	30.0%	44.2%	41.7%	47.7%	42.1%	52.4%	51.1%	55.4%	51.0%	45.5%	46.2%	47.9%
2014	45.0%	49.7%	48.9%	52.7%	50.6%	57.1%	53.0%	53.2%	70.1%	66.1%	68.4%	88.1%
2015	71.4%	69.6%	60.2%	65.8%	69.3%	68.3%	72.6%	74.0%	71.2%	70.3%	63.8%	66.0%
2016	60.2%	67.0%	66.6%	72.4%	69.6%	69.7%	71.6%	72.4%	71.3%	70.5%	63.8%	66.7%
2017	56.7%	75.4%	70.1%	78.3%	65.8%	78.9%	73.4%	74.7%	75.9%	79.1%	70.9%	72.2%
2018	66.8%	77.0%	75.8%	85.9%	79.4%	82.5%	80.2%	80.9%	75.1%	85.3%	74.4%	79.9%
2019	64.2%	73.4%	80.5%	79.8%	75.3%	83.1%	79.0%	79.6%	77.4%	83.3%	70.3%	83.3%
2020	65.6%	55.5%	88.2%	82.4%	83.1%	77.7%	76.5%	77.3%	80.4%	79.7%	70.6%	80.9%
2021	62.3%	75.6%	71.8%	83.1%	90.4%	78.7%	76.5%	77.2%	76.0%	93.4%	77.6%	80.9%

2022	64.9%	78.4%	74.0%	81.3%	81.0%	81.5%	85.7%	87.3%	85.6%	85.3%	83.5%	82.6%
2023	68.5%	76.2%	79.1%	75.6%	94.7%	80.3%	77.2%	85.2%	86.2%	93.7%	84.9%	75.9%
2024	72.4%	79.0%	81.6%	86.9%	93.2%	81.1%	0.0%	0.0%	0.0%	0.0%	0.0%	0.0%

	2009	2010	2011	2012	2013	2014	2015	2016	2017	2018	2019	2020	2022	2023	2024
Arketimi	76.4	70.1	70.7	83.0	79.3	91.9	100.8	93.4	96.6	101.6	98.4	95.8	98.0	99.4	99.5
Humbja	34.0	30.4	37.6	46.4	45.0	37.8	31.3	28.0	26.4	23.9	21.8	21.5	19.7	18.9	17.97
Efektiviteti	50.4	48.8	44.1	44.5	43.6	57.2	69.2	67.2	71.1	77.3	77.0	75.2	78.7	80.6	80.6



Burimi FSHU (OSHEE Group sha)

Alokimi i Kapaciteteve në interkoniksion 2024

Ankandi																				
	Ankandi	Periodha	Shqiperi - Mali Zi						Shqiperi - Greqi						Shqiperi - Kosove					
			ATC e ofruar ne Ankand		ATC e shitur ne Ankand		Cmimi Ankandit		ATC e ofruar ne Ankand		ATC e shitur ne Ankand		Cmimi Ankandit		ATC e ofruar ne Ankand		ATC e shitur ne Ankand		Cmimi Ankandit	
			Export	Import	Export	Import	Export	Import	Export	Import	Export	Import	Export	Import	Export	Import	Export	Import	Export	Import
[MW]	[MW]	[MW]	[MW]	[Euro/MWh]	[Euro/MWh]	[MW]	[MW]	[MW]	[MW]	[Euro/MWh]	[Euro/MWh]	[MW]	[MW]	[MW]	[MW]	[Euro/MWh]	[Euro/MWh]			
Janar																				
Shkurt																				
Mars	Janar	1.2024-31.01.24	100	100	100	100	2.21	0.94	200	100	200	100	3.5	1	200	200	200	200	0.70	0.35
Prill	Shkurt	2.2024-29.02.24	100	100	100	100	0.92	0.6	200	100	200	99	2.46	0.53	200	200	200	200	0.37	0.17
	Mars	3.2024-31.03.24	100	100	100	100	1.01	0.51	200	150	200	150	3.99	0.35	150	150	149	150	0.51	0.38
	Prill	4.2024-30.04.24	100	100	100	100	1.81	0.86	200	200	200	200	2.88	0.44	150	150	150	150	0.47	0.23
	Maj	5.2024-31.05.24	100	100	100	100	2.37	0.86	50	50	50	50	4.07	1.88	0	40	0	40	0	0.33
	Qershor	6.2024-30.06.24	50	50	50	50	3.99	1	50	50	50	50	4.61	1.54	0	0	0	0	0	0

Burimi: OST sha

Disbalancat mujore [MWh] 2024 (6-MUJORI)

	JANAR		SHKURT		MARS		PRILL		MAJ		QERSHOR		TOTALI 2024	
	Dh. Negjore [MWh]	Dh. Pozitive [MWh]	Dh. Negjore [MWh]	Dh. Pozitive [MWh]	Dh. Negjore [MWh]	Dh. Pozitive [MWh]	Dh. Negjore [MWh]	Dh. Pozitive [MWh]	Dh. Negjore [MWh]	Dh. Pozitive [MWh]	Dh. Negjore [MWh]	Dh. Pozitive [MWh]	Dh. Negjore [MWh]	Dh. Pozitive [MWh]
Pala Pergjigjese Balancuese														
AMEC Trading							1	17	17	112	97	173		
AVEN AS ENERGI sh.a	67	111	159	48	139	91	97	151	80	242	150	34	693	678
Denske Commodities ne praq	13	70			13	14	7	7	7	10	0	0	15	131
DIOVAL HYDROPOWER sh.a	320	60	191	60	65	42	131	47	160	33	46	24	892	789
DRAGOBIA ENERGY sh.a	1	100	6	97	21	313	22	181	44	145	34	47	131	921
DRAGOBIA ENERGY sh.a ne praq					1									
ENER TRADE sh.a	1,144	301	1,001	212	286	238	380	487	729	268	907	439	4,820	1,971
EZ-S ENERGY-sh.a (DUMRES)	186	145	192	187	409	212	569	176	520	209	857	60	2,734	1,020
Furnituesi i Yrjeve te Ura FTL (OSHEE Group)	6,221	39,230	2,302	22,413	6,805	21,127	6,138	16,005	3,286	16,470	5,851	16,405	31,226	129,558
FUTURE ENERGY ne praq													4	0
FUTURE ENERGY	999	197	774	72	687	224	897	323	1,317	323	2,270	211	6,904	1,388
GENA ne praq											100	0	101	5
GENA ne praq	1,003	604	525	255	821	370	1,004	2,342	3,756	183	2,914	584	9,823	4,383
GENE (Pala Pergjigjese Balancuese)	2,351	3,267	2,038	3,256	1,992	6,106	1,478	9,304	4,272	10,313	3,043	5,995	15,170	38,242
KURUM INTERNATIONAL sh.a	700	21	288	198	1,140	585	1,921	591	1,583	310	1,472	557	6,704	2,221
MVA							300	74	254	90	280	33		
OST - NUMBET	2,156	1,281	838	2,854	3,032	1,806	4,112	964	1,923	1,726	2,390	749	14,457	9,380
KOSTY	2,813	10,778	2,952	8,510	5,442	7,496							11,212	26,783
Rezerja ne program					0	0	0	0					0	0
Spv Blue 1									326	558	971	1,249	0	2
Oftuarit i Shërbimit te Balancimit														
	UP - Gjenerim [MWh]	Relje Gjenerim [MWh]	UP - Gjenerim [MWh]	Relje Gjenerim [MWh]	UP - Gjenerim [MWh]	Relje Gjenerim [MWh]	UP - Gjenerim [MWh]	Relje Gjenerim [MWh]	UP - Gjenerim [MWh]	Relje Gjenerim [MWh]	UP - Gjenerim [MWh]	Relje Gjenerim [MWh]	UP - Gjenerim [MWh]	Relje Gjenerim [MWh]
Devoll NP Energji Akt	462		972		1,073				3,486		698		6,528	0
Devoll NP Energji Shkese Akt							1,804						1,804	0
KURUM INTERNATIONAL Energji Akt													0	0
Aven AS Energji Energji Akt													0	0
Aven AS Energji Energji Shkese Akt													0	0
MESH sh.a Energji Akt	13,047	2,089	19,855	1,819	6,188	3,499	5,984	2,015	7,401	4,457	6,405	6,543	49,859	20,622
MESH sh.a Energji Shkese Akt	10,981	3,371	13,528	1,214	11,217	2,815	6,399	3,023	8,908	1,111	6,029	5,129	39,247	16,814
TOTALI	42,408	52,201	37,041	41,262	40,500	45,049	31,267	36,685	37,163	36,892	34,240	37,257	221,376	248,390
Disbalancat mujore [MWh]		9,791		4,217		4,549		5,418		271		3,068		27,014

Bazimi: ENI sh.a

KLIENTET NE TL	KLIENTET E "KUALIFIKUAR" PER VITIN 2024						
	Energjia e faturuar ne [MWh]						
	Janar	Shkurt	Mars	Prill	Maj	Qershor	2024
EL220-L220KURUM/337	4,874	4,501	23,996	24,673	23,275	25,737	107,057
F.ARRES-T3/653	0	-	-	1,465	1,528	1,473	4,466
Titan T1,T2	9,588	9,037	4,561	8,997	10,364	10,143	52,690
FUSHE KRUIJE 220kV-T2/058	5,383	707	2,988	9,172	10,809	9,629	38,689
N/ST 220/6,3Colacent-T1/336	145.3	1,023	1,734	1,746	2,181	593	7,423
N/ST i GSA EL 110kV-T1/694	8,956	8,466	8,959	2,772	162	161	29,476
N/ST i GSA EL 110kV-T2/960	-	-	-	-	-	-	-
N/ST I CWI Albania T1/148	466	395	531	417	572	557	2,938
N/ST i AES EL 110kV-T1/690	159	22	-	2,414	7,298	7,073	16,965
N/ST I AES EL 110kV-T2/692	-	118	147	60	2	-	327
HEC Moglice T1,T2,T3	1.4	1	1	1	1	7	12
HEC Peshqesh-T1/633	0.9	9	5	5	6	25	51
Spv Blue 1 T1/139	-	-	-	-	4	14	18
Lajthiza T1/742	14.4	22	17	27	21	228	330
HEC Ashta1-T1,HEC Ashta2-T1,	-	-	0.11	-	-	0.19	0
HEC Banje T1,T2	10.8	12	20	19	19	21	102
HEC Fang-T1,T2.	1.300	35	48	25	22	23	154
Gjenerim KURUM	1.296	5	16	9	10	19	59
FERRO KROM-F1,F2,F3,F4	6,953	6,896	7,392	7,013	7,223	6,789	42,266
TOTAL	36,554	31,249	50,416	58,815	63,497	62,491	303,022

Burimi: OST sha

Devijimet nga programi interkoneksionit 2024 (6-mujori)

Data	Minus = Hyrje		Plus = Dalje		Prill	Maj	Qershor	2024
	Janar	Shkurt	Mars					
1	411	-16	394		394	55	111	1,349
2	462	144	428		428	257	2	1,721
3	-120	293	139		139	850	-41	1,260
4	545	378	-250		-117	429	373	1,358
5	375	411	233		363	962	207	2,551
6	309	49	43		326	18	186	931
7	739	185	51		592	-73	-83	1,411
8	207	-237	24		468	15	-182	295
9	121	354	-267		-9	136	-411	-76
10	-5	46	401		605	163	-209	1,001
11	311	395	126		532	130	4	1,498
12	183	910	287		242	-922	49	749
13	-117	217	364		-132	1159	-129	1,362
14	61	-41	162		352	50	423	1,007
15	65	128	15		131	41	101	481
16	1299	-59	13		-177	-30	308	1,354
17	439	-168	0		99	162	-326	206
18	1474	-12	106		101	127	-232	1,564
19	1294	-47	-261		-515	416	-140	747
20	652	-115	-173		-92	154	-147	279
21	463	70	77		-444	88	1077	1,331
22	148	228	118		542	239	400	1,675
23	-388	-73	365		129	370	217	620
24	-2	-306	-5		1195	-301	79	660
25	154	383	165		1387	385	254	2,728
26	265	649	-248		865	764	264	2,559
27	67	23	574		639	207	556	2,066
28	282	174	930		414	368	499	2,667
29	110	255	-432		298	332	410	973
30	-4		-135		670	110	175	816
31	-61		153			116		208
Total	9,739	4,218	3,397		9,425	6,778	3,795	37,352

Burimi: OST sha

Transaksionet e energjisë elektrike të Pjesëmarrësve të Tregut në [MWh] për 2024

Nr.	Subjekti	Lloji transaksionit	Janar	Shkurt	Mars	Prill	Maj	Qershor	Total (MWh)		
1	DEVOLLI HP	Shkëmbime Cross-Border	AL-GR Greece - IN	-5,209	-7,436	-12,447	-26,790	-14,225	-16,440	-82,007	
			AL-KS Kosovo - IN	0	0	0	0	0	0	0	0
			AL-ME Monte Negro - IN	-3,853	-2,631	-3,046	-2,299	-2,133	-4,973		-18,935
			Total IN	-9,122	-10,067	-15,493	-29,089	-16,358	-21,415		-101,542
			AL-GR Greece - OUT	25,977	23,154	30,424	11,364	8,177	11,519		110,575
			AL-KS Kosovo - OUT	0	0	0	0	0	0		0
			AL-ME Monte Negro - OUT	64,328	47,573	49,103	60,678	58,059	36,350		316,091
		Total OUT	90,265	70,727	79,527	72,042	66,236	47,869		426,666	
		Prodhim Devolli HP	81,143	60,660	64,034	42,953	49,907	27,187		325,884	
		Total Prodhim	81,143	60,660	64,034					325,884	
		Transaksionet e brendshme	Blerje AYEN Energy Trading							374	374
Shitje AYEN Energy Trading									0		
Blerje GEN-I									29		
Shitje GEN-I											
Total transaksione	0	0	0	0	29	374		403			
2	AYEN Energy Trading	Shkëmbime Cross-Border	AL-GR Greece - IN	0	-2,424	-5,347	-1,409	-2,993	-228	-12,401	
			AL-KS Kosovo - IN	-1,299	0	-12,761	-26,300	-10,936	-8,408		-59,704
			AL-ME Monte Negro - IN	0	-618	-5,873	-1,605	-801	-2,838		-11,735
			Total IN	-4,299	-3,042	-23,981	-29,214	-14,730	-11,074		-83,640
			AL-GR Greece - OUT	1,005	0	0	0	7,635	9,775		18,415
			AL-KS Kosovo - OUT	0	966	240	0	0	0		1,206
			AL-ME Monte Negro - OUT	200	3	0	297	396	75		973
		Total OUT	1,205	971	240	297	8,031	9,850		20,294	
		Prodhim AYEN AS Energji	-11,394	-10,332	-17,174.13	-18,164	-12,112	-1,197		-58,477	
		Shitje AYEN AS Energji			579.1	7,644	268	48		8,540	
		Shitje SPV BLUE I								0	
		Blerje SPV BLUE I						-3,107	-9,859	-12,966	
		Blerje KESH						-750		-750	
		Blerje EZ-S ENERGY			-75.1	-18.7	-5			-99	
		Shitje EZ-S ENERGY	439	1,583	1,723.1	3,533	368	10		7,657	
		Blerje Danske Commodities						-270		-270	
		Shitje Danske Commodities								0	
		Blerje DEVOLI HP							374	-374	
		Shitje DEVOLI HP								0	
		Shitje KESH			88.0					9,900	
		Blerje GEN-I				-13	-21			-34	
Shitje GEN-I								0			
Shitje NOA ENERGY TRADE		38	400.0	1,171	6,843.40	11,222		19,672			
Blerje NOA ENERGY TRADE	-136			-750	-82.68	-90		-1,059			
Shitje SOLE24	11,185	10,784	38,204.0	26,364	3,917	264		62,514			
Blerje SOLE24								-9,300			
Shitje FUTURE ENERGY TRADING AND EXCHANGE DYNAMICS	94	2,071	23,741	29,017	6,699	1,624		63,246			
Total transaksione	0	0	0	0	0	0		0			
3	AYEN AS Energji	Shkëmbime Cross-Border	AL-GR Greece - IN	0	0	0	0	0	0	0	
			AL-KS Kosovo - IN	-274	-1,793	-210	-3,172	-2,245	-862		-8,558
			AL-ME Monte Negro - IN	-518	-698	-1,669	-459	-118	-274		-3,736
			Total IN	-792	-2,493	-1,879	-3,631	-2,363	-1,136		-12,294
			AL-GR Greece - OUT	23,003	11,364	9,231	23,354	3,511	0		68,442
			AL-KS Kosovo - OUT	19,356	9,591	3,129	5,110	279	0		37,465
			AL-ME Monte Negro - OUT	9,966	3,300	1,735	2,817	2,030	0		19,838
		Total OUT	52,324	24,255	14,095	30,281	4,810	0		125,745	
		Prodhim HEC PESHQESH-HEC FANG	63,926.2	32,094.3	28,795.0	37,169.3	34,332.7	22,893.0		218,115.5	
		Total Prodhim	62,926.2	32,094.3	28,795.0	37,169.3	34,332.7	22,893.0		218,115.5	
		Transaksionet e brendshme	Shitje AYEN Energy Trading	11,394	10,332	17,173.13	18,164	1,212	197		58,477
Blerje AYEN Energy Trading				-579.10	-7,644	-268	-48		-8,540		
Shitje FUTURE ENERGY TRADING AND EXCHANGE DYNAMICS									0		
Shitje EZ-S ENERGY						30,842.00	23,880		54,722.0		
Total transaksione	11,394	10,332	16,599	10,519	31,786	24,029		104,660			
4	ENERGH ASHTA	Shkëmbime Cross-Border	AL-GR Greece - IN	0	0	0	0	0	0	0	
			AL-KS Kosovo - IN	0	0	0	0	0	0	0	0
			AL-ME Monte Negro - IN	0	0	0	0	0	0	0	0
			Total IN	0	0	0	0	0	0		0
			AL-GR Greece - OUT	0	0	0	0	0	0		0
			AL-KS Kosovo - OUT	0	0	0	0	0	0		0
			AL-ME Monte Negro - OUT	0	0	0	0	0	0		0
		Total OUT	0	0	0	0	0	0		0	
		Prodhim HEC ASHTA	29,854	23,905	19,068	14,281	16,703	16,093		119,904	
		Total Prodhim	29,854	23,905	19,068	14,281	16,703	16,093		119,904	
		Transaksionet e brendshme	Shitje FTL	29,854	23,905	19,068	14,281	16,703	16,093		119,904
Total transaksione	29,854		23,905	19,068	14,281	16,703	16,093		119,904		
5	GEN-I		Shkëmbime Cross-Border	AL-GR Greece - IN	-4,629	-7,480	-6,814	-14,379	-16,603	-7,676	-47,441
				AL-KS Kosovo - IN	-8,008	-4,722	-3,937	-4,947	-3,968	-114	
		AL-ME Monte Negro - IN		-35,735	-35,790	-34,511	-11,267	-16,043	-20,207		-153,553
		Total IN		-48,372	-47,998	-45,262	-30,533	-24,615	-27,939		-224,716
		AL-GR Greece - OUT		32,894	41,212	36,865	15,011	22,557	12,805		161,364
		AL-KS Kosovo - OUT		9,107	586	2,007	4,210	7,522	1,110		24,611
		AL-ME Monte Negro - OUT		6,748	6,219	6,438	18,058	9,443	4,314		51,200
		Total OUT	48,749	47,987	45,320	37,279	39,524	18,229		237,175	
		Blerje ALPEX	-24	8			-3	-22		49	
		Shitje ALPEX						73,82		82	
		Shitje KURUM	-443							-443	
Transaksionet e brendshme	Blerje AYEN Energy Trading								34		
	Shitje AYEN Energy Trading					13	21				
	Blerje ENER TRADE						-3,920		25		
	Shitje ENER TRADE				2	14	3		7		
	Shitje GSA								0		
	Blerje KESH			-1,900	-9,590	-13,680			-24,170		
	Shitje KESH			1,840	2,814	1,680	9,750		16,084		
Blerje DEVOLI HP						-29		-29			
Shitje DEVOLI HP								0			
Total transaksione	-467	8	-8	-6,740	-14,929	9,809		-8,466			
6	GSA	Shkëmbime Cross-Border	AL-GR Greece - IN	-1,593	-6,393	-7,587	-7,496	-1,959	-1,989	-27,017	
			AL-KS Kosovo - IN	-16,313	-10,819	-14,252	-19,977	-8,677	-9,828		-79,866
			AL-ME Monte Negro - IN	0	0	0	-329	-1,199	-1,640		-3,158
			Total IN	-17,906	-17,212	-21,839	-27,802	-11,828	-13,457		-110,611
			AL-GR Greece - OUT	3,137	1,671	2,526	1,640	3,211	5,696		14,881
			AL-KS Kosovo - OUT	1,214	5,609	4,562	5,974	477	114		17,950
			AL-ME Monte Negro - OUT	20	62	2,086	3,015	2,552	353		8,085
		Total OUT	4,371	7,342	9,174	10,629	6,240	3,163		40,919	
		Shitje Kommoditeteve te Kualifikuar	13,535	9,870	12,987	15,214	9,926	8,942		70,664	
		Prodhim			292	521	441	178		1,432	
		Blerje KESH								-5,850	
Shitje KESH				4,410		1,530		5,940			
Blerje ALPEX					-1			-1			
Shitje ALPEX					1			1			
Blerje ENER TRADE								0			
Blerje GEN-I								0			
Blerje KURUM								0			
Shitje KURUM								0			
Total transaksione	13,535	9,870	13,249	18,215	6,466	10,650		71,986			
7	DANSKE COMMODITIES	Shkëmbime Cross-Border	AL-GR Greece - IN	-13,364	-7,575	-11,398	-20,836	-8,809	-11,354	-73,336	
			AL-KS Kosovo - IN	-2,347	0	-1,216	-3,962	0	0		-7,525
			AL-ME Monte Negro - IN	-23,247	-16,378	-28,336	-11,381	-8,056	-17,745		-105,143
			Total IN	-38,958	-24,363	-40,970	-36,179	-16,865	-29,099		-186,041
			AL-GR Greece - OUT	13,838	15,630	24,483	12,479	15,003	13,022		94,881
			AL-KS Kosovo - OUT	19,610	333	4,060	160	0	0		24,163
			AL-ME Monte Negro - OUT	5,517	7,068	7,489	16,820	16,648	8,712		62,254
		Total OUT	38,965	23,030	36,032	29,459	31,668	21,734		180,998	
		Blerje KESH								-2,400,000	
		Shitje KESH			2,068.0	9,900		8,400		20,398.0	
		Blerje AYEN Energy Trading								0.00	
Shitje AYEN Energy Trading					270.0			270.00			
Blerje ALPEX	249.8	574	-141.1	-1,209.7	-5,161.1	2,046.6		-9,402.30			
Shitje ALPEX	187	1,481	5,922.0	2,513.8	3,228.0	987.1		14,139.15			
Blerje ENER TRADE								0.00			
Shitje ENER TRADE			7		16.0	25.0		48.00			

			0	0	0	0	464	0	55,186		
20	SPV BLUE 1	Shkëmbime Cross-Border	AL-GR Greece - IN						0	0	
			AL-KS Kosovo - IN							0	0
			AL-ME Montë Negro - IN							0	0
			Total IN	0	0	0	0	0	0	0	0
			AL-GR Greece - OUT							0	0
			AL-KS Kosovo - OUT							0	0
		AL-ME Montë Negro - OUT							0	0	
		Total OUT	0	0	0	0	0	0	0	0	
		Prodhimi						3,107	10,369	13,476,20	
		Total Prodhim	0.00	0.00	0.00	0.00	3,107.0	10,369.2	13,476,20		
		Konsumi								0	
		Total Konsumi					0.00			0.00	
		Blerje ALPEX								0.00	
		Shitje ALPEX							510.20	510.20	
Shitje AVEN ENERGY TRADING						3,107.00	9,859	12,966.00			
Total transaksione	0.00	0.00	0.00	0.00	3,107.00	10,369.20	12,966.00				
26	KESH sh.a.	Shkëmbime Cross-Border	AL-GR Greece - IN	0	0	80	0	108	-188		
			AL-KS Kosovo - IN	-750	-6,731	-12,880	-2,645	0	-11,113	-34,119	
			AL-ME Montë Negro - IN	0	0	-2,816	-3,320	-546	-7,902	-14,584	
			Total IN	-750	-6,731	-15,776	-5,965	-546	-19,123	-48,901	
			AL-GR Greece - OUT	0	0	0	0	250	0	250	
			AL-KS Kosovo - OUT	6,320	0	0	225	3,670	0	10,215	
			AL-ME Montë Negro - OUT	0	0	0	850	1,750	0	2,600	
			Total OUT	6,320	0	0	1,075	5,670	0	13,065	
			Shitje FTL	403,231	406,089	285,892	199,754	229,570	426,164	1,950,700	
			Shitje Aven Energy Trading			-88			-9,900	-9,988	
		Shitje Aven Energy Trading				750			750		
		Blerje Danske Commodities			-2,008			-8,400	-20,308		
		Shitje Danske Commodities			2,740	4,500	13,160		20,400		
		Blerje GSA			-4,410			-1,530	-5,940		
		Shitje GSA			1,950	3,900			5,850		
		Blerje BESNRGY			-112			-882	-994		
		Shitje BESNRGY			1,075	1,000			2,075		
		Blerje GEN-I			-1,840	-2,814		-1,680	-16,084		
		Shitje GEN-I			1,900	9,590	12,680		24,170		
		Blerje Tirana International Development							0		
		Shitje Tirana International Development							0		
		Shitje EZ-S ENERGY			160				160		
		Blerje NOA ENERGY			-400			-2,100	-18,340		
		Shitje NOA ENERGY				750			750		
		Shitje INFO Telecom					7,800		7,800		
		Blerje ENER TRADE			-400	-6,640		-4,284	-35,280		
		Shitje ENER TRADE			1,600	9,725	39,029		50,354		
		Blerje PROFINFIT CONSULTING							0		
		Blerje EZ-S ENERGY							0		
		Shitje ALBESP			125	4,500			4,625		
		Blerje ALBESP			-160	-1,212	-1,260	-1,440	-4,072		
		Shitje FUTURE ENT				350	1,830		2,180		
		Blerje FUTURE ENT				-210	-210	-120	-540		
		Shitje ONT							0		
		Blerje ALPEX							-860.21		
		Shitje ALPEX	73,077	54,780	47,183	32,750	29,797	21,818	259,405		
		Total transaksione	476,308	460,869	334,467	236,733	333,732	363,980	2,206,089		

Shënime:

1. Konsumatoret e kualifikuar për secilin subjekt ndryshojnë çdo muaj në varësi të kontratave të rrenshkruara nga të dyja palët.
2. Shënjat (+) e ndërkohë për energjinë që bën në rrjet (blerje + import) ndërsa shënjat (-) për energjinë që del nga rrjeti (shitje + eksport).
3. Çdo vlerë e shprehur në shënime dhe në program (jo faktike në matje)

Burimi: OST shu

PROCEDURAT E SHIT-BLERJES SË ENERGJISË ELEKTRIKE NGA KESH NË TREG TË LIBERALIZUAR

Shitje ne kushtet e prurjeve të mëdha

Shitje						
Maj 2024	Shoqëritë	Sasia (MWh)	EUR/MWh	Vlera	TVSH	Vlera me TVSH
	AlbEsp Trading & Consulting sh.p.k.	3,500	52.68	184,367.40	36,873.48	221,240.88
	Danske Commodities Albania sh.p.k.	13,160	48.02	631,895.60	126,379.12	758,274.72
	Ener Trade sh.p.k.	39,029	57.77	2,254,859.00	450,971.80	2,705,830.80
	Fuente Dynamics Tiranë	1,580	57.43	90,740.00	18,148.00	108,888.00
	GEN-I Tirana sh.p.k.	12,680	73.15	927,600.40	185,520.08	1,113,120.48
	GSA shpk	1,400	81.20	113,680.00	22,736.00	136,416.00
	Infnit Power Solution sh.p.k.	420	52.15	21,903.00	4,380.60	26,283.60
	NOA Energy Trade sh.p.k.	7,800	71.32	556,260.00	111,252.00	667,512.00
	Totali	79,569	60.09	4,781,305.40	956,261.08	5,737,566.48

Shit-blerje e energjisë elektrike për optimizim financiar të shoqërisë KESH sh.a. me procedura bazuar ne rregulloren e Tregtimit

Shitje						
Mars 2024	Shoqëritë	Sasia (MWh)	EUR/MWh	Vlera	TVSH	Vlera me TVSH
	Ener Trade sh.p.k	1,600	71.40	114,240.00	22,848.00	137,088.00
	Danske Commodities Albania sh.p.k.	2,740	65.50	179,463.20	35,892.64	215,355.84
	EZ-5 ENERGY sh.p.k	160	70.06	11,209.60	-	11,209.60
	Gen-I	1,900	71.79	136,406.00	27,281.20	163,687.20
Totali	6400	68.96	441,318.80	86,021.84	527,340.64	

Shitje						
	Shoqëritë	Sasia (MWh)	EUR/MWh	Vlera	TVSH	Vlera me TVSH
	AlbEsp Trading & Consulting sh.p.k.	125	83.06	10,383	2,077	12,459
	Ayen Energy Trading sh.a.	750	58.15	43,613	8,723	52,335
	Danske Commodities Albania sh.p.k.	4,500	77.71	349,695	69,939	419,634

Prill 2024	Ener Trade sh.p.k.	9,725	78.98	768,075	153,615	921,690
	Fuente Dynamics	100	58.33	5,833	1,167	7,000
	Fuente Dynamics Tiranë	350	86.06	30,122	6,024	36,146
	GEN-I Tirana sh.p.k.	9,590	75.24	721,552	144,310	865,862
	GSA shpk	1,950	95.56	186,350	37,270	223,619
	HSE d.o.o.	850	79.53	67,600	13,520	81,120
	Infinit Power Solution sh.p.k.	125	90.99	11,374	2,275	13,649
	NOA Energy Trade sh.p.k.	750	60.15	45,113	9,023	54,135
	Renrgy Trading Group sh.p.k.	1,075	63.69	68,466	13,693	82,160
Totali		29,890.00	77.22	2,308,173.00	461,634.60	2,769,807.60

Shitje						
Maj 2024	Shoqëritë	Sasia (MWh)	EUR/MWh	Vlera	TVSH	Vlera me TVSH
	Infinit Power Solutions sh.p.k.	250	70.99	17,747.50	3,549.50	21,297.00
	Future Energy Trading& Exchange	250	77.19	19,297.50	3,859.50	23,157.00
	GSA sh.p.k.	2,500	82.38	205,950.00	41,190.00	247,140.00
	AlbEsp Trading&Consulting	1,000	78.37	78,370.00	15,674.00	94,044.00
	Renrgy Trading Group sh.p.k.	1,000	78.13	78,130.00	15,626.00	93,756.00
	EFT AG	5,000	70	350,000.00	-	350,000.00
	Totali		10,000	74.95	749,495.00	79,899.00

Blerje						
2024	Shoqëritë	Sasia (MWh)	EUR/MWh	Vlera	TVSH	Vlera me TVSH
	NOA Energy Trade sh.p.k.	400	53.1	21244	4248.8	25492.8
	GEN-I Tirana sh.p.k.	1840	45.2	83176	16635.2	99811.2
	Renrgy Trading Group sh.p.k.	112	42.9	4802.56	960.512	5763.072
	Danske Commodities Albania sh.p.k.	2008	48.1	96655.52	19331.104	115986.624

Mars 2	Ayen Energy Trading sh.a.	88	54.4	4782.8	956.56	5739.36
	Fuente Dynamics sh.p.k. /Kosove	160	42.8	6840.8		6840.8
	Ener Trade sh.p.k	400	40.1	16040	3208	19248
	AlbEsp Trading&Consulting	160	39.5	6315.2	1263.04	7578.24
	Axpo d.o.o Beograd	432	54.8	23652	0	23652
	HSE d.oo	2464	45.8	112900.8		112900.8
Totali		8064	46.68	376409.68	46603.22	423012.90

Blerje						
Prill 2024	Shoqëritë	Sasia (MWh)	EUR/MWh	Vlera	TVSH	Vlera me TVSH
	AlbEsp Trading & Consulting sh.p.k.	1212	38.6	46782.32	9356.46	56138.78
	Danske Commodities Albania sh.p.k.	9900	45.2	447876	89575.20	537451.20
	Ener Trade sh.p.k.	6040	51.8	312764	62552.80	375316.80
	Fuente Dynamics	300	41.5	12444	2488.80	14932.80
	Fuente Dynamics Tiranë	210	36.8	7717.5	1543.50	9261.00
	GEN-I Tirana sh.p.k.	2814	39.6	111552	22310.40	133862.40
	GSA shpk	4410	36.1	159303.9	31860.78	191164.68
	HSE d.o.o.	3320	38.6	128166.2	25633.24	153799.44
Totali		28,206.00	43.49	1,226,605.92	245,321.18	1,471,927.10

Blerje						
Maj 2024	Shoqëritë	Sasia (MWh)	EUR/MWh	Vlera	TVSH	Vlera me TVSH
	Future Energy Trading& Exchange Dyr	210	50.0	10497.9	2099.58	12597.48
	GEN-I Tirana sh.p.k.	1680	49.1	82454.4	16490.88	98945.28
	AlbEsp Trading&Consulting	1260	48.6	61198.2	12239.64	73437.84
	Ener Trade sh.p.k	4284	50.9	218055.6	43611.12	261666.72
	Axpo d.o.o Beograd	546	49.6	27103.44	0.00	27103.44
	NOA Energy Trade sh.p.k.	2100	50.1	105273	21054.60	126327.60
Totali		10,080.00	50.06	504,582.54	95,495.82	600,078.36

Shitje energji elektrike -- ALPEX-Tregtar I rregjistruar ne Burse							
Muaji	Shoqëria	Periudha	Sasia	Çmimi	Vlera	TVSH	Vlera me TVSH
			MWh	Eur/MWh	Eur	Eur	Eur

Janar	Shitje ne Burse ALPEX	01-31.01.2024	20,995.40	93.94	1,972,212.53	-	1,972,212.53
Shkurt		01-29.02.2024	8,452.40	85.28	720,784.90	-	720,784.90
Mars		01-31.03.2024	1,898.81	94.37	179,185.95	-	179,185.95
Prill		01-30.04.2024	798.16	73.84	58,934.02	-	58,934.02
Maj		01-31.05.2024	4,331.87	69.65	301,707	-	301,707
Qershor		01-30.06.2024	307.35	95.58	29,376	-	29,376
Korrik		01-31.07.2024					
Gusht		01-31.08.2024					
Shtator		01-30.09.2024					
Tetor		01-31.10.2024					
Nentor		01-30.11.2024					
Dhjetor		01-31.12.2024					
Totali		Shitje	Janar- Dhjetor	36,783.99	89	3,262,200	-

Blerje energji elektrike -- ALPEX-Tregtar i rregjistruar ne Burse							
Muaji	Shoqëria	Periudha	Sasia	Çmimi	Vlera	TVSH	Vlera me TVSH
			MWh	Eur/MWh	Eur	Eur	Eur
Janar		01-31.01.2024	-	-	-	-	-
Shkurt		01-29.02.2024	-	-	-	-	-

Mars		01-31.03.2024	-	-	-	-	-	
Prill		01-30.04.2024	-	-	-	-	-	
Maj		01-31.05.2024	-	-	-	-	-	
Qershor	Blerje ne Burse ALPEX	01-30.06.2024	1,176.51	76.44	89,937	-	89,937	
Korrik		01-31.07.2024						
Gusht		01-31.08.2024						
Shtator		01-30.09.2024						
Tetor		01-31.10.2024						
Nentor		01-30.11.2024						
Dhjetor		01-31.12.2024						
Totali		Blerje ne Burse	Janar- Dhjetor	1,176.51	76.44	89,937	0	89,937

Blerje energji elektrike sipas detyrimit për shërbim publik të vendosur me VKM 456/2022 & 449/2023							
		Shoqëritë	Sasia (MWh)	EUR/MWh	Vlera	TVSH	Vlera me TVSH
	Qershor 2024	AlbEsp Trading & Consulting sh.p.k.	1,440	73.98	106,536.00	21,307.20	127,843.20
		Ayen Energy Trading sh.a.	9,900	111.93	1,108,143.00	221,628.60	1,329,771.60
		Danske Commodities Albania sh.p.k.	8,400	116.47	978,348.00	195,669.60	1,174,017.60
		EFT AG	9,930	91.63	909,861.30	-	909,861.30
		Ener Trade sh.p.k.	35,280	100.51	3,545,868.00	709,173.60	4,255,041.60
		Fuente Dynamics Tiranë	120	52.52	6,302.40	1,260.48	7,562.88
		GEN-I Tirana sh.p.k.	9,750	117.04	1,141,111.50	228,222.30	1,369,333.80
		GSA sh.p.k.	1,530	99.86	152,791.20	30,558.24	183,349.44
		HSE d.o.o.	2,700	89.46	241,542.00	-	241,542.00
		NOA Energy Trade sh.p.k.	15,840	102.41	1,622,208.00	324,441.60	1,946,649.60
		Renrgy Trading Group sh.p.k.	882	79.58	70,187.04	14,037.41	84,224.45
		Totali		95,772	103.19	9,882,898.44	1,746,299.03

Burimi: KESH sha; OST sha



