

BILANCI ENERGJITIK 2024 (MWh)

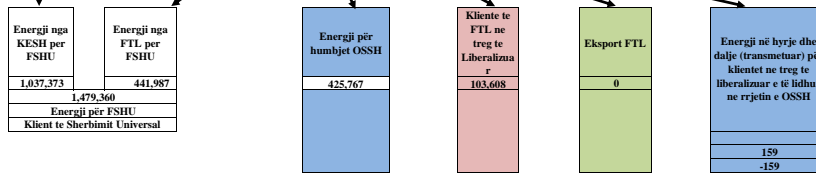
Prodhimi neto publik	
Prodhimi Neto KESH sha	
1,208,758	
Blerje KESH ne treg te liberalizuar	0
Prodhim+Blerje	1,208,758
Shkembime (hyrje) KEK	
Shkembime (dalje) KEK	171,385
Energji shterbime ndihmese+disbal	
Energji per FSHU nga KESH sha	1,037,373

Prodhuar nga PPE ne rrjetin e OSSH			Prodhuar nga PPE ne rrjetin e OST		Prodhues te pavarur						
HEC Selfe	HEC Priv/Kon ne Rrjetin e OSSH per FTL	Fotovoltaik (tote FTL)	HEC Priv/Kon ne Rrjetin e OST per FTL	HEC Ashta	HEC Danga	HEC Mogleka	HEC KURUM	HEC Peshqesh	HEC Fanga	HEC Qumi	Fotovoltaik (ne treg te Bre)
5,793	352,377	13,227	369,121	73,024	65,208	136,936	118,456	39,933	83,866	1,532	9,660

Prodhim neto vendas	2,477,891
---------------------	-----------

Energji e siguruar nga FTL					
Blerje Neto (Seli)	Blerje HC.Priv/Kon ne Rrjetin e OSSH per FTL	Blerje FOTOVO L.TAIK	Blerje HC.Priv/Kon ne Rrjetin e OST per FTL	Blerje Neto Ashta	Blerje ne Treg te Liberalizuar nga FTL
5,793	352,377	13,227	369,121	73,024	157,979
971,521					

Balanca ne interkoneksion (dhenie)	279,080
------------------------------------	---------



KONSUMI I ENERGJISE NE SHQIPERI	2,198,801
---------------------------------	-----------

2,198,811

Burimi: OST sha; KESH sha; OSSH sha; FSHU sha; FTL sha; (OSHEE Group sha)

TABELA ME TE DHENA PERIODIKE (MUJORE) TE OSHEE Group sh.a 2024		Janar	Shkurt	Mars	Progresive	
A Energji Totale e Hyrë në OSSH (MWh)						
A.1	Energji e transmetuar nepermjete OST per llogari te OSHEE Group Sh.a	A=1.1A.3A1.7 A.1-Sum(A.1.1,A.1.6)	759,550	644,890	618,777	2,023,317
A.1.1	Nga KESH -Gen nepermjete OST		379,224	386,578	271,570	1,037,373
A.1.2	Nga OST si import i OSHEE Sh.a (Energji e blerë në ALPEX për FSHU)		52,081	52,690	53,208	157,970
A.1.3	Energji e transmetuar per klientet 35kV (te dal ne treg te parrgulluar furnizues te tjere)		740	3,150	6,363	10,252
A.1.4	Nga OST per llogari te Klienteve te OSHEE Group Sh.a prodhuar nga HEC-et ne rrjetin e transmetimit		182,836	110,021	147,827	440,684
A.1.5	Nga TEC VLORA nepermjete OST		n/a	n/a	n/a	n/a
A.1.6	Nga Blotica 1,2 nepermjete OST		n/a	n/a	n/a	n/a
A.1.7	Import OSHEE Group Sh.a		-	-	-	-
A.2	Energji elektrike e injektuar ne OST nga Hec-et Lokale	A.2	73,759	35,851	73,148	182,758
A.3	Energji e transmetuar direkt ne rrjetin e OSSH Sh.a	A.3-Sum(A.3.1,A.3.3)	144,668	92,551	139,808	377,028
A.3.1	HEC Ulez-Lanabregas		2,114	1,880	1,799	5,793
A.3.2	Impjantet Private/line Koncesion		136,715	85,036	126,626	352,377
A.3.3	Burimet e Rinovueshme Fotovoltaik (BRE)		3,840	5,635	9,384	18,858
A.3.4	Prodhim i injektuar ne OSSH nga BRE-t ne Treg te Parrgulluar		993	1,326	1,666	3,985
B Energji Totale ne Rrjetin e Shperndarjes (MWh)		B=1.A.3+A.2	833,309	680,841	691,925	2,206,075
C Humbjet Totale ne Rrjetin e Shperndarjes (MWh)		C=C.1+C.2+C.3	177,293	114,411	134,062	425,767
C.1	Humbje Teknike njesite e TL (MWh)		10,755	7,774	9,897	28,426
C.2	Humbje Teknike ne Zona (MWh)		113,233	78,712	85,639	277,584
C.3	Humbje joTeknike ne Zona (MWh)		53,306	27,926	38,526	119,757
C.1 Humbjet Totale ne OSSH Sh.a (%)		C.1+C.2	21.28%	16.80%	19.38%	19.30%
C.1.1	Humbje Teknike njesite e TL (%)		1.29%	1.14%	1.43%	1.29%
C.1.2	Humbje Teknike ne Zona (%)		13.77%	11.70%	12.56%	12.75%
C.1.3	Humbje joTeknike ne Zona (%)		6.40%	4.00%	5.37%	6.43%
D Energjia e perdorur ne Rrjetin e Shperndarjes		D=B-C	616,037	532,160	526,941	1,679,737
D.1 Shitur Klienteve FMF (MWh)		D.1=O.1+O.1.2	51,042	47,867	49,561	148,470
D.1.1	Shitur Klienteve FMF Privat (MWh)		115	26	18	159
D.1.2	Shitur Klienteve FMF Jobuxhetore(MWh)		1,403	1,356	1,488	4,247
D.1.3	Shitur Klienteve FMF 20/10/6 (MWh)		49,525	46,485	48,055	144,064
D.2	Shitur Klienteve Private (MWh)	D.2=O.2+O.2.1+O.2.3	106,813	98,258	92,647	297,718
D.2.1	Shitur nga rrjeti i Transmetimit per llogari te OSSH Sh.a		695	600	553	1,848
D.2.2	Shitur per nevoja te veta te OSSH Sh.a		106,119	97,658	92,094	295,870
D.2.3	Shitur Klienteve Private (pa ate per nevoja te veta dhe Ne TL)		3,438	3,258	3,043	9,739
D.3	Shitur Klienteve Jobuxhetore (MWh)		17,017	15,936	14,282	47,235
D.4	Shitur Klienteve Bushetore (MWh)		363,827	327,840	287,897	979,564
D.5	Shitur Klienteve Familjare (MWh)	D.5=O.3+O.3.2	355,015	319,413	279,590	954,019
D.5.1	Shitur Klienteve Familjare (MWh)		8,812	8,427	8,307	25,546
D.5.2	Shitur Klienteve Familjare per Ambientet e Përbashketa		746	3,150	6,363	10,252
D.6	Energji elektrike e injektuar ne OST nga Hec-et Lokale	D.6=A.2	73,759	35,851	73,148	182,758
D.7	Energji elektrike e perdorur nga klientet ne treg te parrgulluar	D.7	740	3,150	6,363	10,252
E Faturuar muaji Parafshe (000/leke)			7,982,027	7,374,630	6,650,006	22,006,664
F Arketimet e muajit aktual (000 leke)		F=A.1+B.2-A.4	7,344,687	7,006,722	6,727,401	21,078,810
F.1	Arketuar per faturat korrente te vitit aktual		43,814	4,919,897	4,386,674	9,350,385
F.3	Arketuar per faturat e tjera te vitit aktual		7,300,873	2,086,825	1,882,156	1,482,156
F.4	Arketuar per faturat e tjera te viteve te kaluara		92,000	95,000	101,200	95,000
F.1 Arketimet e muajit aktual (%)		F.1/F	92.0%	95.0%	101.2%	95.0%
F.1.1	Arketuar per faturat korrente te vitit aktual (%)	F.1.1/F.1	0.5%	66.7%	66.0%	42.5%
F.1.3	Arketuar per faturat e tjera te vitit aktual (%)	F.1.3/F.1	0.0%	0.0%	22.3%	6.7%
F.1.4	Arketuar per faturat e tjera te viteve te kaluara (%)	F.1.4/F.1	91.5%	28.3%	12.9%	46.6%
G Faturuar muaji Raportive (000/leke)			7,374,630	6,650,006	6,078,325	20,102,962
1 Nr. Konsumatoreve gjithesej (Nr.)			1,324,441	1,327,372	1,330,088	1,330,088
2 Fatura te emetuara me lexim konsumi (Nr.)			1,027,226	1,025,143	1,036,467	3,088,836
3 Sasia e energjise se faturuar me lexim konsumi (MWh)			299,881	301,375	297,510	898,766
4 Fatura te emetuara me lexim "0" (Nr.)			-	-	-	-
5 Nr.Faturave te emetuara pa lexim (energji e pa matur) (Nr.)			-	-	-	-
6 Sasia e energjise se faturuar si energji e pamatur (MWh)			101	61	52	214
7 Nr.Faturave te emetuara pa lexim (dem ekonomik) (Nr.)			438	300	213	951
8 Sasia e faturuar si dem ekonomik (MWh)			374,497	322,031	360,283	1,056,811
9 Nr.Faturave per te cilat eshte arketuar kamat vonese (Nr.)			76,046	64,886	72,300	213,232
10 Vlera e Kamat vonesave te arketuara (000/leke)			-	-	-	-

Burimi: OSSH sha; FSHU sha; FTI sha; OSHEE Group sha

BILANCI OSSH, FSHU,FTL sha 2024 (3-mujori)		
1	ENERGJI TOTALE E HYRE NE RRJETIN E OSSH-se	2,023,317
2	Energji e shitur nga KESH sha per FSHU sha	1,037,373
3	ENERGJI NE HYRJE E BLERE NGA FTL (OSHEE sha)	971,519
3.1	Blere nga Prodhimi i PPE në rrjetin e OSSH	371,396
3.2	Blere nga Prodhimi i PPE në rrjetin e OST	442,144
3.3	Blere ne Treg të Liberalizuar nga FTL sha	157,979
4	ENERGJI NE DALJE NGA FTL (OSHEE sha)	971,519
4.1	Energji nga FTL per FSHU	441,987
4.2	Energji nga FTL për humbjet OSSH	425,767
4.3	Energji e shitur nga FTL ne treg te liberalizuar	103,606
4.4	Eksport i FTL	-
4.5	Energji vetem per tu transmetuar tek klientet ne treg te liberalizuar (ne rrjetin e OSSH)	159
7	ENERGJI QE KALON NE RRJETIN E OSSH-se	2,206,075
7.1	Energji totale e transmetuar nga OST ne rrjetin e Shpërndarjes	1,825,019
7.2	Energji e transmetuar direkt ne rrjetin e Shpërndarjes nga impiantet e lidhur ne rrjetin e Sh	180,298
7.3	Energjia e ngitur ne rrjetin e transmetimit nga centralet e lidhura ne rrjetin e OSSH	182,758
8	Humbje totale ne rrjetin e OSSH-se (%)	19.30

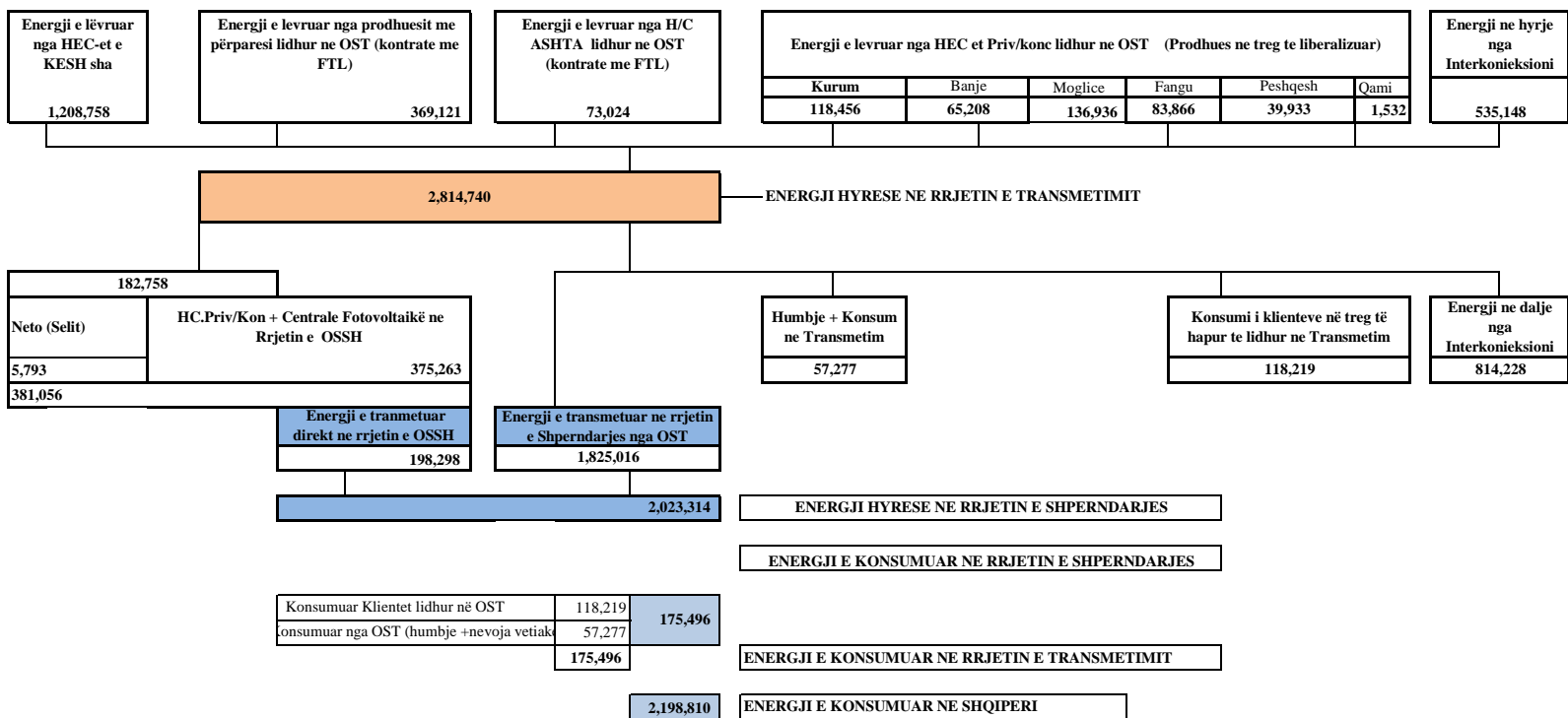
Burimi: OSSH sha; FSHU sha; FTL sha;

		Janar	Shkurt	Mars	2024	
HYRJE	Dhene nga H/C e KESH ne rrjetin e Transmetimit	461,940	434,525	312,293	1,208,758	2,814,743
	Dhene nga H/C e me perparesi ne rrjetin e Transmetimit (+Qami)	153,707	86,486	130,461	370,654	
	Energji nga Hec-et Lokale levruar ne Rrjetin e Transmetimit (me ngritje)	73,759	35,851	73,148	182,758	
	Gjenerim KURUM (prodhues i pavarur)	47,623	36,678	34,155	118,456	
	HEC ASHTA (prodhues i pavarur Kontr.me OSHEE)	29,506	23,646	19,871	73,023	
	HEC BANJE (prodhues i pavarur)	25,295	20,166	19,747	65,208	
	HEC MOGLICE (prodhues i pavarur)	55,232	39,392	42,314	136,938	
	HEC PESHQESH-T1/637 (prodhues i pavarur)	17,478	8,763	13,692	39,933	
	HEC FANGU (prodhues i pavarur)	45,494	23,264	15,108	83,866	
Importi(Hyre) nga Linjat e Interkonjeksionit	133,112	187,286	214,751	535,149		
DALJE	Humbjet ne Transmetim	22,608	17,520	17,149	57,277	2,814,743
	Transmetuar ne Rrjetin e Shperndarjes	687,647	586,964	550,408	1,825,019	
	Klientene treg te hapur (TL)	36,554	31,249	50,416	118,219	
	Eksporti (Dale) nga Linjat e Interkonjeksionit	296,337	260,325	257,566	814,228	
	Humbjet ne Transmetim	22,608	17,520	17,149	57,277	
	Humbjet ne Transmetim ne %	2.17	1.96	1.96	2.03	

OST sha	Njësia e Matjes	Janar	Shkurt	Mars	Shuma 2024 [MWh]
	MWh				
Prodhimi nga KESH_GEN në Rrjetin e Transmetimit	1	461,940	434,525	312,293	1,208,758
Prodhimi nga HEC/HPP e vogla në Rrjetin e Transmetimit	2	73,759	35,851	73,148	182,758
Prodhimi nga PPE/IPP e mëdha në Rrjetin e Transmetimit	3	153,707	86,486	130,461	370,655
Prodhimi nga HEC Peshqesh	4	17,478	8,763	13,692	39,933
Prodhimi nga HEC Banja	5	25,295	20,166	19,747	65,208
Prodhimi nga HEC FANG	6	45,494	23,264	15,108	83,866
Prodhimi nga HEC Moglicë	7	55,232	39,392	42,313	136,936
Prodhimi nga HEC Ashta	8	29,506	23,646	19,871	73,024
Prodhimi nga KURUM (Ulez-Shkopet&Bistrica1,2)	9	47,623	36,678	34,155	118,456
Eksporti (-) nga Linjat e Interkonjeksionit	D	296,337	260,325	257,566	814,228
Importi (+) nga Linjat e Interkonjeksionit	R	133,112	187,286	214,751	535,148
Balanca (Total Interkonjeksioni)	11=(R-D)	163,225	73,039	42,815	279,080
Energjia Totale në Marrje	12=(1+2+3+4+5+6+7+8+9+10+R)	1,043,146	896,058	875,539	2,814,742
Humbjet në Rrjetin e Transmetimit (përfshirë Nevojat Vetjake)	13	22,608	17,520	17,149	57,277
Humbjet në Rrjetin e Transmetimit %	14=13/12	2	2	2	2
Energjia Totale në Dhënie	15=(12-13)	1,020,538	878,538	858,390	2,757,465
<i>Transmetuar në Linjat e Interkonjeksionit</i>	16=D	296,337	260,325	257,566	814,228
<i>Transmetuar tek Klientët e Kualifikuar</i>		36,554	31,249	50,416	118,219
<i>EL220-L220KURUM/337</i>		4,874	4,501	23,996	33,372
<i>Titan T1,T2</i>		9,588	9,037	4,561	23,186
<i>FUSHE KRUIJE 220kV-T2/058</i>		5,383	707	2,988	9,079
<i>N/ST 220/6,3Colacent-T1/336</i>		145	1,023	1,734	2,903
<i>N/ST i GSA EL 110kV-T1/694</i>		8,956	8,466	8,959	26,381
<i>N/ST i GSA EL 110kV-T2/960</i>		0	0	0	0
<i>N/ST I CWI Albania T1/148</i>		466	395	531	1,392
<i>N/ST i AES EL 110kV-T1/690</i>		159	22	0	180
<i>N/ST I AES EL 110kV-T2/692</i>		0	118	147	265
<i>HEC Moglice T1,T2,T3</i>		1	1	1	3
<i>HEC Peshqesh-T1/633</i>		1	9	5	15
<i>Lajthiza T1/742</i>		14	22	17	54
<i>HEC Ashta1-T1,HEC Ashta2-T1,</i>		0	0	0	0
<i>HEC Banje T1,T2</i>		11	12	20	43
<i>HEC Fang-T1,T2.</i>		1	35	48	84
<i>Gjenerim KURUM</i>		1	5	16	21
<i>FERRO KROM-F1,F2,F3,F4</i>		6,953	6,896	7,392	21,241
<i>Transmetuar në rrjetin e Shpërndarjes</i>		687,647	586,964	550,408	1,825,019
<i>Transmetuar në rrjetin e Shpërndarjes 110 kV</i>		599,909	512,591	482,164	1,594,664
<i>Transmetuar në rrjetin e Shpërndarjes 35 kV</i>		43,519	36,186	33,063	112,768
<i>Transmetuar në rrjetin e Shpërndarjes 6, 10, 20 kV</i>		44,219	38,186	35,181	117,587

Burimi:OST sha

PARAQITJA SKEMATIKE E FLUKSEVE TE ENERGIJISE NE SISTEMIN ELEKTRO-ENERGJITIK SHQIPETAR VITI 2023 (MWh)



LEGJENDA	
FSHU	FURNIZUES I SHËRBIMIT UNIVERSAL
FMF	FURNIZUES I MUNDËSISË SË FUNDIT

Burimi: OST sha; KESH sha; OSSH sha; FSHU sha; FTL sha; (OSHEE Group sha)

PRODHIMI GJATE VITIT 2024 NGA CENTRALET E LIDHURA NE RRJETIN E TRANSMETIMIT (MWh)							
CENTRALI PRODHUES	MW	SUBJEKTI	LIDHJA	JANAR	SHKURT	MARS	3- MUJORI
HEC "Fierze"	500.000	"KESH" sha	220 kV	461,940	434,525	312,293	1,208,758
HEC "Koman"	600.000		220 kV				
HEC "V. Dejes"	250.000		220 kV				
Tec Vlora	98.000	"KESH" sha	220 kV				
	1,448,000						1,208,758
HEC "Ulez"	25.200	"Kurum International" sh.a.	110 kV	47,623	36,678	34,155	118,456
HEC "Shkopet"	24.000		110 kV				
HEC "Bistrica 1"	22.500		110 kV				
HEC "Bistrica 2"	5.000		110 kV				
HEC "Peshqesh"	28.000	"Ayen As Energji" sha	220 kV	17,478	8,763	13,692	39,933
HEC "Fangu"	74.600		220 kV	45,494	23,264	15,108	83,866
HEC "Banje"	73.000	"Devoll Hydropower" sha	110 kV	25,295	20,166	19,747	65,208
HEC "Moglice"	184.000	"Devoll Hydropower" sha	111 kV	55,232	39,392	42,313	136,937
HEC Qami-1	1.730	"Lajthiza Invest" shpk		628	280	624	1,532
	438.030						445,932
HEC "Ashta"	48.200	"Energji Ashta" shpk	110 kV	29,506	23,646	19,871	73,023
							73,023
HEC "Bishnica 2"	2.500	"HEC Bishnica 1,2" shpk	110 kV	1,581	919	1,125	3,625
HEC "Dardhe"	5.800	"Wenerg" shpk	110 kV	3,385	1,447	1,647	6,479
HEC "Truen"	2.500	"TRUEN" shpk	110 kV				
HEC "Ternove"	8.385	"TEODORI 2003" shpk	110 kV	1,341	1,141	799	3,281
HEC "Gjorice"	29.610	"DITEKO" shpk	110 kV	18,029	13,381	14,589	45,999
HEC "Slabinje 2C"	3.400	"Hidropower Elektrik" shpk	110 kV	1,270	811	1,654	3,735
HEC "Slabinje 2D"	4.885		110kV	1,384	693	1,232	3,308
HEC "Slabinje 2E"	3.800		110 kV	2,007	1,008	1,631	4,645
HEC "Slabinje"	13.800	"Power-Elektrik-Slabinje" shpk	110 kV	5,506	3,234	4,359	13,099
HEC "Bele 1"	5.000	"Euron Energy" shpk	110 kV	18,863	12,851	16,084	47,798
HEC "Topojan 2"	5.800						
HEC "Bele 2"	11.000						
HEC "Topojan 1"	2.900						
HEC "Orgjost 1 Ri"	4.800	"Energjal" shpk					
HEC "Cerruje-1"	2.300	"Energy partners Al" shpk	110 kV	2,734	724	2,160	5,617
HEC "Cerruje-2"	2.800						
HEC "Rrupe"	3.600						
HEC "Rapuni 1,2"	8.100	"C & S Construction Energy" shpk	110 kV	5,256	3,406	4,759	13,421
HEC "Rrapuni 3,4"	8.850	"C & S Energy" shpk	110 kV	4,942	2,854	4,146	11,942
HEC "Llapaj"	13.620	"Gjo-Spa POWER" shpk	110 kV	5,765	3,130	5,921	14,815
HEC "Lengarice"	8.940	"Lengarica & Energy" shpk	110 kV	4,656	2,928	5,400	12,985
HEC "Lura 1"	6.540	"Erdat Lura" shpk	110 kV	7,173	2,988	5,752	15,913
HEC "Lura 2"	4.020						
HEC "Lura 3"	5.660						
HEC "Malla"	5.455	"Gjurr Rec" shpk	110 kV	2,270	1,077	1,933	5,280
HEC Prella	14.970	"Prele Energji"	110 kV	6,318	1,592	5,767	13,677
HEC Cemerica 1	0.88	"REJ ENERGY" shpk	110 kV	2,316	1,621	2,315	6,252
HEC Cemerica 2	1.08						
HEC Cemerica 3	2.1						
HEC TUC	4.47	MC Inerte Lumzi	110 kV	5,612	2,148	3,408	11,169
HEC Lumzi	11						
HEC Denas	14.5	"Denas Power" shpk	110 kV	5,909	3,688	5,714	15,310
Ljenga 1	1.73	"HEC LLËNGË" sh.p.k	110 kV	1,627	940	1,616	4,182
Ljenga 2	0.3						
Ljenga 3	1.5						
HEC Shpella Poshte 2	2.3	Liria Energji shpk	110 kV	1,906	869	1,209	3,983
HEC Germani 1	4.8	SA'GA-MAT shpk	110 kV	2,124	855	1,362	4,341
HEC Germani 2	1.5						
HEC Lashkiza 1	4.076	HEC Lashkiza shpk	110 kV	1,160	615	836	2,611
HEC Lashkiza 2	0.882						
HEC Seta 1+2	7.454	"Hydro Seta" sh.p.k	110 kV	6,362	3,220	4,733	14,315
HEC Seta 3	2.722						
HEC Seta 4	4.724						
HEC Darsi 1,2	14.963	Henz Energy shpk	110 kV	7,202	2,769	3,731	13,702
HEC Egnatia	5	REMI shpk	110 kV	1,937	879	1,283	4,100
HEC Seka & Zais/684	14.96	SEKA Hydropower shpk	110 kV	9,701	5,365	9,523	24,590
HEC ARSTI	3.13	Hec Arsti shpk	110 kV	2,440	1,467	1,887	5,793
HEC KASKADA GJADER T1/344	24.9	S.P.E. Gjader shpk	110 kV	4,574	1,603	4,112	10,289
HEC-et Dragobia&Ceremi/686	21.9	Dragobia Energy shpk	110 kV	5,672	4,781	7,029	17,482
HEC Veshica 1,2	13.9	"Kalisi Hydropower" shpk	110 kV	2,059	1,204	2,121	5,384
	353.806			153,079	86,206	129,836	369,121

PRODHIMI GJATE VITIT 2023 NGA CENTRALET E LIDHURA NE RRJETIN E SHPERNDARJES (MWh)							
HECET DHE KAPACITETI	MW	SUBJEKTI	LIDHJA	JANAR	SHKURT	MARS	3- MUJORI
HEC "Lanabregas"	5.000	"Hec Lanabregas" sha	35kV	2,114	1,880	1,799	5,793
HEC "Lenic"	0.400	"EMIKEL 2003" sh.p.k	10kV	280	263	281	824
HEC "Çorovode"	0.200		10kV	107	92	117	316
HEC "Smokthine"	9.200	"Albanian Green Energy" sh.p.k	35 kV	3,740	2,643	3,498	9,881
HEC "Bulqize"	0.600		10kV	146	90	115	352

HEC "Homesh"	0.395		10kV	68	50	53	171
HEC "Zerqan"	0.625		6kV	145	151	170	466
HEC "Arras"	4.800		20kV	2,524	2,427	2,296	7,248
HEC "Orgjost"	1.200		10kV	735	664	674	2,072
HEC "Lekbibaj"	1.400		10kV	482	770	794	2,046
HEC "Dukagjin"	0.640		10kV	160	154	179	494
HEC "Marjan"	0.200		10kV	0	0	0	0
HEC "Lozhan"	0.100		10kV	72	57	74	203
HEC "Barmash"	0.830		10kV	216	157	232	605
HEC "Treske 2"	0.250	"Balkan Green Energy" shpk	10kV	117	99	120	337
HEC "Nikolice"	0.700		10kV	270	215	274	759
HEC "Funares"	1.920		10kV	856	857	905	2,618
HEC "Lunik"	0.200		10kV	143	143	140	426
HEC "Kerpice"	0.420		6kV	31	69	63	163
HEC "Ujanik"	0.630		10kV	175	148	149	473
HEC "Borsh"	0.250		6kV	86	118	114	318
HEC "Leshnice"	0.380		10/6kv	74	65	118	257
HEC "Velcan"	1.200		10kV	528	253	504	1,285
HEC "Muhur"	0.250		6kV	71	65	58	194
HEC "Rajan"	1.020		10kV	406	307	480	1,194
HEC "Lure"	0.750		10kV	51	147	162	359
HEC "Gjanç "	3.700	"Spahiu Gjanç" sh.p.k.	35 kV	0	0	0	0
HEC "Bogove"	2.500	"Wonder power" sha	35 kV	1,225	558	1,347	3,130
HEC "Xhyre"	0.570	"Amal" sh.p.k	10kV	232	206	212	650
HEC "Stranik"	4.600		35kV	2,367	1,427	1,630	5,425
HEC "Zall Tore"	3.000	"Hidro Invest 1" shpk	35kV	1,914	1,257	1,326	4,496
HEC "Klos"	1.950	"Malido-Energji" shpk	6kV	628	321	349	1,299
HEC "Borje-Oreshke"	1.500		35kV	2,650	1,840	2,585	7,074
HEC "Cernaleve "	2.950	"HIDROALBANIA Energji" shpk	35kV	1,134	769	1,101	3,003
HEC "Cernaleve 1"	3.270		35kV	1,284	860	1,194	3,338
HEC "Murdhar 1"	2.680		10kV	1,510	545	1,242	3,297
HEC "Murdhar 2"	1.000	"HydroEnergy" shpk	10kV	974	364	795	2,133
HEC "Dishnice"	0.200	"Dishnica Energji" shpk	10kV	46	48	92	186
HEC "Lubonje"	0.300	"Elektro Lubonja" shpk	10kV	146	81	119	345
HEC "Peshk"	3.430	"Koka & Ergi Energy Peshk" shpk	35kV	1,861	1,140	1,887	4,887
HEC "Labinot -Mal"	0.250	"Ansara Koncension" shpk	6kV	43	39	36	119
HEC "Pobreg"	12.300	"Energy Plus" shpk	35kV	6,461	3,431	5,312	15,204
HEC "Vlushe"	14.200	"Hec Vlushe " shpk	35kV	6,263	2,958	7,200	16,421
HEC "Belesova 1"	0.150	"Korkis 2009" shpk	6kV	0	0	0	0
HEC "Faqekuq 1,2"	6.400	"HP OSTROVICA ENERGY" shpk	35kV	2,064	1,222	2,084	5,370
HEC "Shemri"	1.000		10	426	157	305	889
HEC "Mgulle"	0.280	"Erald Energjitik" shpk	10kV	267	224	248	739
HEC "Kryezi 1"	0.600	"Bekim Energjitik" shpk	10kV	705	349	572	1,627
HEC "Selishte"	2.000	"Selishte" shpk	35kV	1,088	590	923	2,602
HEC "Carshove"	1.500		10kV	503	378	593	1,474
HEC "Ura e Dashit"	1.200	"ERMA MP" shpk	10kV	1,662	878	1,742	4,282
HEC "Gizavesh"	0.500	"Dosku Energy" shpk	10kV	0	0	0	0
HEC "Koka 1"	3.200	"Snow Energy" shpk	35kV	907	394	853	2,154
HEC "Stravaj"	3.600	"Stravaj Energji" shpk	35kV	2,111	1,223	1,471	4,805
HEC "Picar 1"	0.200	"Peshku Picar 1" shpk	6kV	55	60	89	204
HEC "Vertop"	1.520	"Hydro Salillari Energy "shpk	35kv	310	169	293	772
HEC "Martanesh"	10.500	"Albanian Power" shpk	35kV	2,951	1,608	3,071	7,630
HEC "Verba 1,2"	5.000	"Hydro power Plant Of Korca" shpk	35kV	815	390	827	2,033
HEC "Eterra"	1.080	"HYDROBORSH" shpk	35kV	902	647	956	2,506
HEC "Ostren i Vogel"	0.320	"Lu & Co Eco Energy 2011" shpk	10kV	111	107	113	331
HEC "Kozel"	0.500		10kV	142	109	114	364
HEC "Helmes 1"	0.800	"E.T.H.H. "shpk	10kV	426	251	451	1,128
HEC "Helmes 2"	0.500		10kV	241	152	232	626

HEC"Qafezeze"	0.400	"Caushi -Energji" shpk	10kV	584	541	611	1,736
HEC"Trebish"	1.775	"SA-GLE Kompani "shpk	10kV	616	397	598	1,611
HEC"Mollaj"	0.600	"Energji Xhaci" shpk	10kV	143	124	138	405
HEC"Tucep"	0.400	"Tucep" shpk	10kV	299	286	292	876
HEC"Treska4"	3.600	"Hec-Treska"shpk	35kV	1,602	1,062	1,671	4,334
HEC"Treska3"	0.400		35kV	197	152	222	572
HEC"Treska 2I"	0.620		35kV	391	280	426	1,097
HEC"Sotire 1 & 2"	2.200	"Hydro Energy Sotira"shpk	35kV	642	347	549	1,538
HEC"Shutine"	2.400	"Shutina energji"shpk	10kV	564	345	619	1,527
HEC"Cekrez 1,2"	0.660	"Zall Herr Energji 2011"shpk	6kV	416	412	453	1,281
HEC"Qarr"	1.000	"Hec Qarr & Kaltanj"shpk	35kV	776	581	571	1,928
HEC"Bisak"	1.300	"Bardhgjana" shpk	6kv	665	432	388	1,485
HEC"Shales"	1.080	"Gjoka Konstruksion -Energji" shpk	35kV	60	0	0	60
HEC"Strelce"	1.174		35kV	598	336	629	1,562
HEC "Shpelle "	0.400	"Sarolli" sh.p.k	10kV	206	109	187	502
HEC "Bicaj"	3.100	"En.Ku" sh.p.k	10kV	0	0	0	0
HEC "Leskovik 1"	1.072	"Maksi Elektrik" sh.p.k	10kV	44	41	42	127
HEC "Leskovik 2"	1.100		10kV	59	57	62	178
HEC "Orenje"	0.875	"Juana" sh.p.k	10kV	187	168	149	504
HEC "Tamarë"	0.750	"WTS Energji" shpk	10kV	0	0	0	0
HEC "Benë"	1.000	"Marjakaj" shpk	6kV	124	153	181	458
HEC "Vithkuq" 2		"Favina 1" shpk		0	0	0	0
HEC "Vithkuq"1	2.715	"Favina 1" shpk	35/10kV	1,418	1,252	1,414	4,084
HEC "Selca"	1.600	"Selca Energji" shpk	10kV	1,241	1,134	1,259	3,634
HEC" Kumbull- Merkurth"	0.830	"DN & NAT Energy"shpk	6kV	198	92	212	502
HEC "Sasaj"	8.600	"Energo – Sas" shpk	35kV	2,865	2,393	3,065	8,323
HEC "Tervol"	10.600	"Hec i Tervoliti" shpk	35kV	4,953	1,637	4,700	11,290
HEC "Radove"	2.500	"M.T.C. Energy" shpk	10kV	1,293	941	1,434	3,668
HEC"Gurshpat 1"	0.840	"Gurshpat Energy" shpk	10kV	703	579	475	1,757
HEC"Gurshpat 2"	0.830		10kV	816	525	582	1,922
HEC"Bistrica 3"	1.570	"Bistrica 3 Energy" shpk	6kv	917	683	858	2,459
HEC"Hurdhas 1"	1.710	Hydropowerplant Construction shpk	6kV	2,349	1,197	1,852	5,398
HEC"Perrollaj"	0.500	"Fatum" shpk	10kV	180	49	76	305
HEC"Koxheraj"	0.620	"Koxherri Energji" shpk	10kv	252	159	251	663
HEC"Kacni"	3.870	"Kisi-Bio-Energji" shpk	20kV	1,066	356	786	2,208
HEC"Lena 1"	1.950	"Gama Energy" shpk	35kv	1,095	654	1,299	3,048
HEC"Lena 2"	2.300		35kv				
HEC"Lena 2A"	0.250		35kv				
HEC"Driza"	3.408	"Mesopotam Energy" shpk	35kv	462	290	337	1,089
HEC Strelca 1,2,3	5.349	"Strelca Energy" shpk	35kv	1,306	835	1,463	3,604
HEC "Ujanik 2"	2.500	"HP Ujaniku Energy" shpk	35kv	1,035	498	813	2,346
HEC "Nishove"	1.360	"Nishova Energy" shpk	35kv	104	88	98	289
HEC "Shtika"	1.300	"Perparimi SK" shpk	10kv	397	255	586	1,237
HEC "Ballenje"	1.900	"Ballenja Power Martanesh" shpk	35kv	485	233	536	1,254
HEC "Gavran 1"	0.998	"Gavran Energy" shpk	35kv	395	225	270	891
HEC "Gavran 2"	1.215	"Gavran Energy" shpk	35kV	517	291	340	1,148
HEC "Kasollet e Selces 1"	4.000	"Xhengo Energji" shpk	35kV	1,179	664	989	2,832
HEC "Holta Kabash"	2.200	HEC Kabash Porocan shpk	35kV	1,715	866	2,034	4,616
HEC "Holta Porocan"	3.300		35kV				
HEC "Lusen 1"	0.315	"Eurobiznes" shpk	35kV	102	70	85	256
HEC "Ura e Fanit"	1.000	"Ayen As Energji"sha	35kV	499	469	504	1,472
HEC "Gorice"	1.747	"THE BLUE STAR" sh.p.k	35kV	901	683	1,084	2,667
HEC "Kabash 1&2"	5.800	"Energji Unifers" shpk	35kV	1,181	451	859	2,490
HEC "Tucep 2"	1.7	"DUKA T2" shpk	35kV	423	380	397	1,199
HEC "Dobrenje Tomorrice"	2.4	DAAB Energy Group shpk	35kV	320	265	365	950
HEC "Razdoli"	0.765	Hidro Vizion shpk (1 pa licens nga ERE)	35kV	189	141	342	672
HEC "Dragostunje"	3.1	"HEC-i Dragostunje" shpk	35kV	3,544	952	2,271	6,767
HEC "Stebleve"	3.4	"PURE ENERGY STEBLEVA" shpk	35kV	469	221	402	1,092
HEC "Zerec 1"	0.55	"EnRel Hydro" shpk	35kV	840	619	967	2,426
HEC "Zerec 2"	1.315						
HEC "Shingjon 1"	0.651	"EDIANI" sh.p.k.	35kV	465	243	286	994
HEC "Shingjon 2"	0.356						
HEC "Blac"	1.3	"BLAC ENERGY" sh.p.k	35kV	97	36	114	248
HEC "Qarrishitë"	0.3	"IDI 2005" SHPK	35kV	146	79	170	396
HEC "Vendresh"	0.456	"HP VENDRESH ENERGY" SHPK	35kV	99	59	116	274
HEC "Antena"	1.105	"DERBLE" shpk	35kV	493	161	299	952
HEC "Kamenice"	0.973	HP Kamenica shpk	10kV	507	325	389	1,221
HEC "Qyteze"	0.9	Muso He Qyteze	10kV	365	274	360	998
HEC "Marjan Gura e Vesheve"	0.63	Marituda Shpk	10kV	157	87	135	379
HEC "Skatine"	2.677	Skatine- Hec Shpk	10kV	1,042	360	612	2,014
HEC "Kaparjel"	0.2	ABV Konstruksion Shpk	10kV	36	56	73	165
HEC "Letaj"	0.54	Asi-Tre Shpk	10kV	147	77	130	354
HEC "Nice"	2.27	MP-HEC Shpk	35kV	283	146	206	635
HEC "Meshurdhe"	1.3	SIMA-Com Shpk	10kV	1,144	687	1,010	2,841
HEC "Thanez"	2	AFRIMI K Shpk	35kV	1,263	516	845	2,624

HEC "OSOJE"	1.9	OSOJA HPP shpk	35kV	1,382	917	1,335	3,634
HEC "Voskopje"	1.9	FAVINA I shpk	35kV	1,009	654	910	2,573
HEC "Nderfishas"	1.125	"SGD Energy" shpk	35kV	227	108	243	577
HEC "Rreshen"	0.38	Nikolli Energy shpk	10kV	143	128	147	418
HEC "Gurra"	0.5	Uleza Nderim shpk	6kV	129	115	121	365
HEC "Vile"	1.994	Hydro Power Panariti shpk	35kV	925	555	894	2,374
HEC "Dukona"	0.800	Dukona shpk	20kV	72	18	103	193
HEC "Prevall"	1.750	Gega-G shpk	35kV	1,172	674	1,085	2,932
HEC "Camerice"	0.800	Rei Energy shpk	35kV	831	757	826	2,415
HEC "Stror"	2.000	Era Hydro shpk	35kV	1,692	1,003	1,635	4,330
HEC "Mivas"	1.940	Elva 2001 shpk	35kV	535	473	838	1,846
HEC "Spathare"	1.038	Lucente koncesionare shpk	10kV	591	429	177	1,197
HEC "Miraka"	0.600	Kuarci Blace shpk	10kV	251	108	135	495
HEC "Shengjun"	2.000	Irarba Energji shpk	10kV	373	103	0	476
HEC "Dobrunje"	0.840	W.T.S. Energji shpk	10kV	293	349	460	1,102
HEC "Muras"	2	Mateo& Co shpk	10kV	1,252	820	1,168	3,240
HEC "Trojet"	0.9	Trojjet Energji shpk	10kV	294	364	523	1,181
HEC "Deni"	0.85	ASI TRE shpk	35kV	285	112	315	713
HEC "Kamican"	1.86	IDI 2005 shpk	35kV	1,110	344	764	2,217
HEC "Vardar"	1.972	Gerti shpk	35kV	1,635	1,531	1,597	4,763
HEC "Stavec"	6.52	Koka Ergi Stavec shpk	35kV	4,610	2,793	4,025	11,428
HEC "Kalis"	2.138	ERDY Energy shpk	35kV	1,377	990	1,237	3,604
HEC "Gjinar"	0.83	Erdi Gas shpk	10kV	221	99	162	483
HEC "Backa 1"	3.36	Kroi Mbret shpk	35kV	2,397	1,195	2,597	6,190
HEC "Plepi"	2.28	Domi Tec shpk	35kV	377	218	359	954
HEC "Zall Xhuxhe 1 & 2"	4.7	Hec Zall Xhuxhe shpk	35kV	1,347	469	766	2,582
HEC "Pishat"	1.911	GRRENTECH ENERGY SYSTEMS shpk	35kV	62	60	55	176
HEC "Lingjane1&2"	2.2	"Rei-Energji" shpk	35kV	959	591	602	2,153
HEC "Guri i Zi"	1.719	"Aris Albania" shpk	35kV	469	182	401	1,052
HEC "Drita"	1.98	"Brecani R.O.S.P." shpk	20kV	982	788	1,197	2,967
HEC "EME"	0.45	"Hec EME" shpk	6kV	263	105	141	509
HEC "Terfoje"	1.98	"HEC TERFOJA" sh.p.k	10kV	870	762	948	2,580
HEC "Borie Lura 1"	1.8	"AGETA" sh.p.k	20kV	421	176	363	960
HEC "Mali"	1.49	"TIRANA ENERGI" sh.p.k	20kV	1,247	1,381	1,058	3,685
HEC "Shelli"	1.518	"ARIS ALBANIA" SHPK	35kV	826	363	674	1,863
HEC "Daznjane"	1.518	"ARIS ALBANIA" SHPK	35kV	370	10	265	646
HEC "Vokopola"	2.3	"Vokopola Energji" SHPK	6kV	0	0	0	0
HEC "Shutrej 1&2"	1.97	"ATEANI ENERGY" SHPK	6kV	597	153	485	1,236
HEC KRONZ	0.43	"LASTER ENERGY" SH.P.K.	10kV	188	95	114	397
HEC Bushi	0.25	"BUSHI-LUFT" SH.P.K.	10kV	45	16	36	97
HEC Tuc				0	604	596	1,200
HEC Mireshi				1,148	591	794	2,532
				140,828	86,917	130,425	358,169

334

CENTRAL FOTOVOLTAIK	MW	SUBJEKTI	LIDHJA	JANAR	SHKURT	MARS	3-MUJORI
Seman - 2	2	"SEMAN2SUN" sh.p.k	35 kV	215	271	308	794
Topoje	2	"SONNE" sh.p.k	35 kV	213	269	300	783
Topoje 2	2	"AED SOLAR" sh.p.k	35 kV	213	268	300	781
Topoje (Sheq Marinas)	2	"AGE SUNPOWER" sh.p.k	35 kV	212	268	309	790
Topoje (Sheq Marinas) 2	2	"SEMAN SUNPOWER" sh.p.k	35 kV	214	271	311	796
Seman Isolar	2	"SEMANISOLAR" sh.p.k	35 kV	227	277	311	814
ES 2019 sh.p.k	2	ES 2019 sh.p.k	35 kV	244	308	361	912
SMART WATT sh.p.k	2	SMART WATT sh.p.k	35 kV	248	306	356	910
Tren Bilisht	2	"RTS" sh.p.k	35 kV	183	268	304	755
STATKRAFT Renewbles albani PV Lundrues banje	2	"STATKRAFT"	35 kV	46	66	84	196
Pv -Plug	2	"AEE" sh.p.k	10 kv	176	237	300	712
Korca Photovoltaic Park Shpk/920	2	Korca Photovoltaic Park Shpk	35 kV	190	273	307	770
NTSP Shpk/944	2	NTSP Shpk	35 kV	190	275	306	771
Sun Beat System Shpk/921	2	Sun Beat System Shpk	35 kV	194	271	304	770
Tren Sun System Shpk/919	2	Tren Sun System Shpk	35 kV	194	278	309	781
ERENI SOLAR	2	ERENI SOLAR shpk 35 kv	35 kV	250	348	389	987
GREEN ENERGY BILISHTI	2	GREEN ENERGY BILISHTI SHPK 35 kv	36 kV	218	318	368	904
Total				3,427	4,572	5,228	13,227
EZ-5 Solar Park	10	EZ-5 Solar Park	35 kV	587	782	976	2,344
EZ-5 Solar Park	10	EZ-5 Solar Park	35 kV	407	544	690	1,641
FV ALBSOLAR	2	"ALBSOLAR" SH.P.K.	35 kV	185	270	295	750
FV SUN ENERGY SOLUTIONS	2	"SUN ENERGY SOLUTIONS" SH.P.K.	35 kV	229	306	368	902
"T & B 1979" sh.p.k.			10 kV	0	487	321	808
Prodhim i injektuar nga Veteproduhesit 35 kV. Treg te Parregulluar, PRO FIX/940			35 kV	0	0	19	19
Prodhim i injektuar nga Veteproduhesit 20 kV. Treg te Parregulluar			20 kV	0	0	25	25
Zbatim i vendimit te ERE, Nr.19; 20; 21; 22, date 19.02.2024.			35 kV	0	0	3,172	3,172
Tot ne treg te lire				1,407	2,389	5,864	9,660
				4,833	6,961	11,092	22,886

"KARAVASTA SOLAR" sh.p.k ***	140	Centrali Fotovoltaik me vendndodhje në zonën e Remasit – Karavasta, Lushnjë dhe Libofshë, Fier	220 kV	9,699	15,016	20,684	45,400
"KESH" sh.a ***	5.143	Central Fotovoltaik i Digës së Qyrsaqit, Vau i Dejës	221 kV	368	450	561	1,379
	193						

2,477,890

Kapaciteti Instaluar i gjithe prodhuesve në prodhim	2,815	MW
---	-------	----

*** Përfshirë si sasi energjie në prodhimin neto të KESH sha, sipas kontaktës përkatëse

Burimi: OST sha; KESH sha; OSSH sha; FSHU sha; FTL sha; (OSHEE Group sha)

NIVELI I FIERZES 1991-2024

	Janar	Shkurt	Mars	Prill	Maj	Qershor	Korrik	Gusht	Shtator	Tetor	Nentor	Dhjetor
1991	254.4	260.8	268.6	279.9	293.4	296.1	294.0	291.5	289.4	288.3	288.8	285.1
1992	278.0	274.1	268.0	278.8	281.0	279.6	275.2	268.7	263.9	271.4	281.9	280.6
1993	275.2	265.3	264.7	278.5	280.5	277.3	271.0	261.1	253.6	249.9	255.6	270.2
1994	254.4	260.8	268.6	279.9	293.4	296.1	294.0	291.5	289.4	288.3	288.8	285.1
1995	253.8	260.3	262.5	275.3	289.0	288.7	284.5	282.2	288.2	283.8	279.9	287.5
1996	287.1	288.7	286.5	294.7	295.8	293.1	287.6	282.2	285.1	284.3	289.2	291.3
1997	289.4	284.5	281.7	285.2	294.1	292.0	287.0	280.0	272.9	272.4	270.8	277.2
1998	273.7	270.0	265.2	278.9	288.1	287.4	281.8	277.6	276.0	277.1	279.0	277.1
1999	272.7	275.6	281.5	290.5	295.9	293.3	288.3	279.5	271.0	257.6	263.6	276.9
2000	276.4	276.7	276.8	286.9	286.6	280.1	273.5	267.5	261.6	248.4	249.3	252.1
2001	253.6	258.2	275.1	282.9	287.6	283.8	273.7	271.1	269.2	263.6	263.2	252.1
2002	245.3	247.1	252.6	264.0	268.6	271.3	270.1	267.8	274.3	286.1	285.3	284.0
2003	291.1	289.5	286.3	287.0	292.3	290.3	285.9	280.8	276.0	282.6	285.6	283.3
2004	284.7	290.8	293.4	296.0	296.2	296.2	293.1	286.3	281.1	280.0	286.1	288.0
2005	281.2	281.5	293.3	296.1	295.6	294.1	286.7	277.2	266.5	256.9	253.6	279.0
2006	283.5	288.6	294.4	295.9	296.5	295.9	293.8	290.2	285.3	278.7	266.2	256.2
2007	256.1	263.7	272.0	276.8	276.8	274.8	268.5	263.6	261.8	261.1	275.8	282.1
2008	285.1	289.7	290.9	295.5	295.3	295.7	294.3	288.6	283.9	280.9	285.2	286.5
2009	283.6	281.8	283.4	292.5	293.7	292.4	288.0	281.2	276.2	271.6	266.3	280.1
2010	290.1	289.2	293.9	296.0	296.3	294.4	291.8	288.6	284.9	285.2	284.3	287.5
2011	281.6	274.1	275.0	276.6	281.0	286.1	284.7	279.0	273.9	268.2	261.6	264.5
2012	265.8	274.1	262.0	280.2	293.4	294.4	288.4	280.4	261.4	261.6	269.0	276.6
2013	278.3	274.1	294.8	296.9	296.9	294.2	289.7	283.6	280.8	281.4	282.5	276.1
2014	275.1	274.1	274.6	285.3	292.9	294.9	291.7	286.8	285.5	285.0	284.8	286.3
2015	288.7	274.1	292.2	296.3	296.1	293.3	287.5	280.1	272.1	275.4	278.9	275.9
2016	289.9	274.1	291.8	296.5	296.2	295.6	290.5	285.4	283.3	288.4	288.9	281.6
2017	271.5	274.1	280.9	278.7	281.6	272.4	270.2	268.0	271.0	264.6	269.6	289.9
2018	289.7	274.1	295.0	296.5	296.4	296.0	294.0	287.5	277.9	270.2	266.5	267.3
2019	267.3	274.1	272.7	279.9	289.9	292.7	287.6	278.5	274.2	268.6	273.2	275.6
2020	271.6	272.0	283.5	288.6	293.6	291.7	284.6	276.5	273.5	274.1	268.7	272.7
2021	291.7	294.1	292.6	294.3	296.7	291.7	282.7	274.3	271.3	267.7	267.8	275.1
2022	270.7	268.3	260.7	282.5	289.0	288.0	281.5	270.4	271.4	267.9	281.7	291.7
2023	293.2	286.4	291.5	295.6	296.1	296.3	291.4	281.3	270.8	263.5	280.1	284.5
2024	286.5	287.4	287.4									

	Janar	Shkurt	Mars	Prill	Maj	Qershor	Korrik	Gusht	Shtator	Tetor	Nentor	Dhjetor
2024	286.50	287.41	287.42									
Mesatarja	275.50	276.90	279.82	286.48	290.68	289.53	284.98	279.25	275.33	273.34	274.52	277.52
Minimumi	245.3	247.1	252.6	264.0	268.6	271.3	270.1	261.1	253.6	248.4	249.3	252.1
Maksimumi	293.2	294.1	294.4	296.9	296.9	296.2	294.3	291.5	289.4	288.3	289.2	288.0

NIVELI I FIERZES GJATE 2024 KRAHESUAR ME (Min,Maks dhe Mesataren historike) (m)



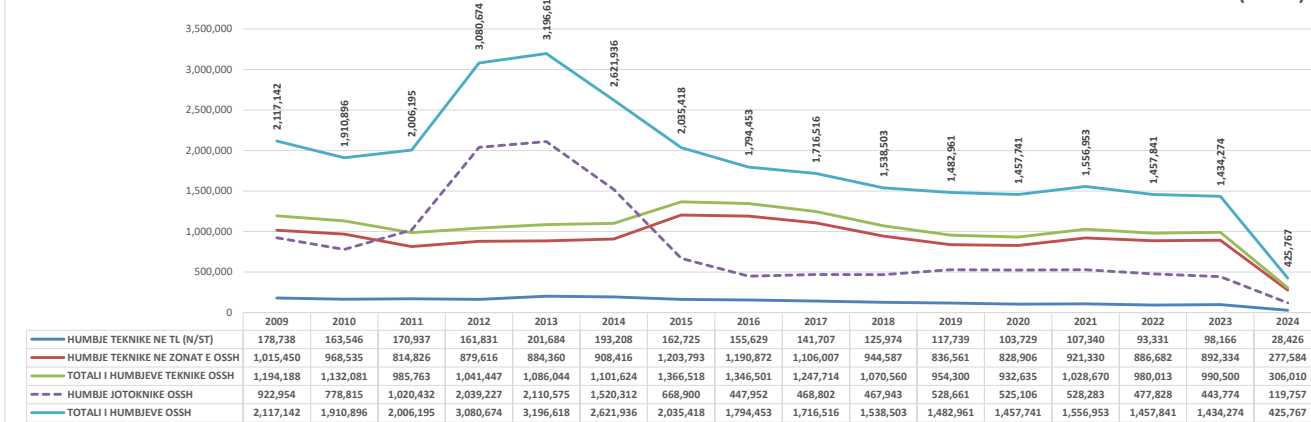
Burimi OST sha

HUMBJET NE RRJETIN E SHPERNDARJES 2009-2024 (MWh)

	2009	2010	2011	2012	2013	2014	2015	2016	2017	2018	2019	2020	2021	2022	2023	2024
HUMBJE TEKNIKE NE TL (N/ST)	178,738	163,546	170,937	161,831	201,684	193,208	162,725	155,629	141,707	125,974	117,739	103,729	107,340	93,331	98,166	28,426
HUMBJE TEKNIKE NE ZONAT E OSSH	1,015,450	968,535	814,826	879,616	884,360	908,416	1,203,793	1,190,872	1,106,007	944,587	836,561	828,906	921,330	886,682	892,334	277,584
TOTALI I HUMBJEVE TEKNIKE OSSH	1,194,188	1,132,081	985,763	1,041,447	1,086,044	1,101,624	1,366,518	1,346,501	1,247,714	1,070,560	954,300	932,635	1,028,670	980,013	990,500	306,010
HUMBJE JOTOKNIKE OSSH	922,954	778,815	1,020,432	2,039,227	2,110,575	1,520,312	668,900	447,952	468,802	467,943	528,661	525,106	528,283	477,828	443,774	119,757
TOTALI I HUMBJEVE OSSH	2,117,142	1,910,896	2,006,195	3,080,674	3,196,618	2,621,936	2,035,418	1,794,453	1,716,516	1,538,503	1,482,961	1,457,741	1,556,953	1,457,841	1,434,274	425,767

2023	2024 (3-Mujori)
98,166	28,426

HUMBJET NE RRJETIN E SHPERNDARJES 2009-2024(MWh)



Burimi: OSSH sha / (OSHEE Group sha)

FATURIM-ARKEËTIMET DHE NDRYSHIMI I GJENDJES DEBITORE GJTE VITIT 2021 (000,LEKE)									
Viti 2021	Te arketueshme	Faturuar 2021	arketimi per fakturat e 2021	Arketimi per fakturat e 2007-2020	Arketimi total	Te Arketueshme per energjine e faturuar ne vitin 2021	Ndryshimi I gjendjes se Llogarive te arketueshme gjate vitit 2021	Shuarje Detyrimesh	
			5	7	6=5+7	9=(2-5)			
	75,609,639	2	5	7	6=5+7	9=(2-5)			
Janar	76,272,477	6,400,370	19,639	5,717,893	5,737,532	6,380,731	662,838	0	0
Shkurt	76,826,391	6,245,453	3,720,254	1,921,284	5,691,538	2,475,198	553,914	0	0
Mars	76,605,803	6,158,373	5,690,524	688,438	6,378,961	467,849	230,588	0	0
Prill	76,818,750	5,817,548	5,302,816	301,785	5,604,601	514,732	212,947	0	0
Maj	76,122,770	5,190,837	5,558,138	328,680	5,886,818	367,301	695,980	0	0
Qershor	75,924,651	5,548,298	5,417,458	328,559	5,746,017	130,840	198,119	0	0
Korrrik	76,924,743	6,377,974	5,053,270	324,612	5,377,882	1,324,705	1,000,693	0	0
Gusht	77,478,064	6,554,952	5,648,400	353,231	6,001,630	906,552	553,321	0	0
Shtator	76,933,233	5,401,032	5,687,762	288,102	5,945,864	286,730	544,832	0	0
Tetor	76,284,525	5,544,032	5,739,826	425,913	6,192,739	195,794	648,707	0	0
Neutor	76,704,823	5,794,416	5,080,754	293,564	5,374,318	713,662	420,298	0	0
Dhjetor	78,394,397	7,572,744	5,583,186	299,984	5,883,170	1,989,557	1,689,574	0	0
Total									

FATURIM-ARKEËTIMET DHE NDRYSHIMI I GJENDJES DEBITORE GJTE VITIT 2022 (000,LEKE)									
Viti 2022	Te arketueshme	Faturuar 2022	arketimi per fakturat e 2022	Arketimi per fakturat e 2007-2022	Arketimi total	Te Arketueshme per energjine e faturuar ne vitin 2022	Ndryshimi I gjendjes se Llogarive te arketueshme gjate vitit 2022	Shuarje Detyrimesh	
			5	7	6=5+7	9=(2-5)			
	78,394,397	2	5	7	6=5+7	9=(2-5)			
Janar	79,437,476	7,902,272	4,793,436	2,065,757	6,859,193	3,108,836	1,043,079	0	0
Shkurt	80,288,829	7,515,738	4,560,541	2,094,835	6,664,376	2,946,187	851,353	0	0
Mars	80,426,273	7,857,071	6,691,413	1,028,214	7,719,627	1,165,658	137,444	0	0
Prill	79,617,380	6,186,945	6,531,117	464,721	6,995,838	344,172	808,893	0	0
Maj	79,499,359	6,188,383	5,960,488	326,836	6,306,324	218,815	118,821	0	0
Qershor	79,997,520	6,553,744	5,610,349	445,234	6,055,583	943,395	498,162	0	0
Korrrik	80,005,681	6,553,744	6,230,846	314,737	6,545,583	322,898	8,161	0	0
Gusht	79,791,653	7,358,491	7,103,150	469,370	7,572,519	255,341	214,028	0	0
Shtator	78,554,734	6,162,925	7,005,112	394,733	7,399,844	843,187	1,236,919	0	0
Tetor	77,962,798	5,848,663	6,104,850	335,749	6,440,598	255,187	591,935	0	0
Neutor	78,491,014	6,502,315	798,011	5,186,087	5,984,099	5,704,303	518,216	0	0
Dhjetor	79,249,438	7,458,986	6,200,688	489,874	6,690,562	1,258,298	768,423	0	0
Total		82,089,187			81,234,146				

FATURIM-ARKEËTIMET DHE NDRYSHIMI I GJENDJES DEBITORE GJTE VITIT 2023 (000,LEKE)									
Viti 2023	Te arketueshme	Faturuar 2023	arketimi per fakturat e 2023	Arketimi per fakturat e 2007-2022	Arketimi total	Te Arketueshme per energjine e faturuar ne vitin 2023	Ndryshimi I gjendjes se Llogarive te arketueshme gjate vitit 2023	Shuarje Detyrimesh	
			5	7	6=5+7	9=(2-5)			
	79,910,252	2	5 <td>7 <td>6=5+7 <td>9=(2-5)</td> <td></td> <td colspan="2"></td> </td></td>	7 <td>6=5+7 <td>9=(2-5)</td> <td></td> <td colspan="2"></td> </td>	6=5+7 <td>9=(2-5)</td> <td></td> <td colspan="2"></td>	9=(2-5)			
Janar	80,265,490	7,236,860	17,571	6,864,050	6,881,621	7,210,288	352,238	0	0
Shkurt	80,928,747	7,477,014	4,674,206	2,139,553	6,813,758	2,802,809	663,256	0	0
Mars	80,025,935	6,588,875	6,660,084	831,603	7,491,687	71,209	902,812	0	0
Prill	80,223,225	6,321,511	5,757,211	367,010	6,124,221	564,300	197,290	0	0
Maj	79,402,801	5,993,172	6,505,113	308,483	6,813,596	511,941	820,424	0	0
Qershor	79,665,073	6,074,125	5,550,743	261,110	5,811,853	523,382	262,272	0	0
Korrrik	81,307,082	7,326,635	5,416,995	267,632	5,684,626	1,909,640	1,642,009	0	0
Gusht	81,148,340	7,281,460	6,976,104	464,097	7,440,201	305,356	158,741	0	0
Shtator	80,122,629	6,339,551	6,941,811	423,452	7,365,263	602,259	1,025,711	0	0
Tetor	78,896,288	5,987,458	6,799,334	414,465	7,213,799	5,573,992	1,226,341	0	0
Neutor	79,489,986	6,806,859	5,995,279	217,882	6,213,161	6,588,977	593,698	0	0
Dhjetor	80,898,725	7,990,009	6,461,676	119,294	6,581,270	7,870,415	1,408,739	0	0
Total		81,423,530			80,435,057				

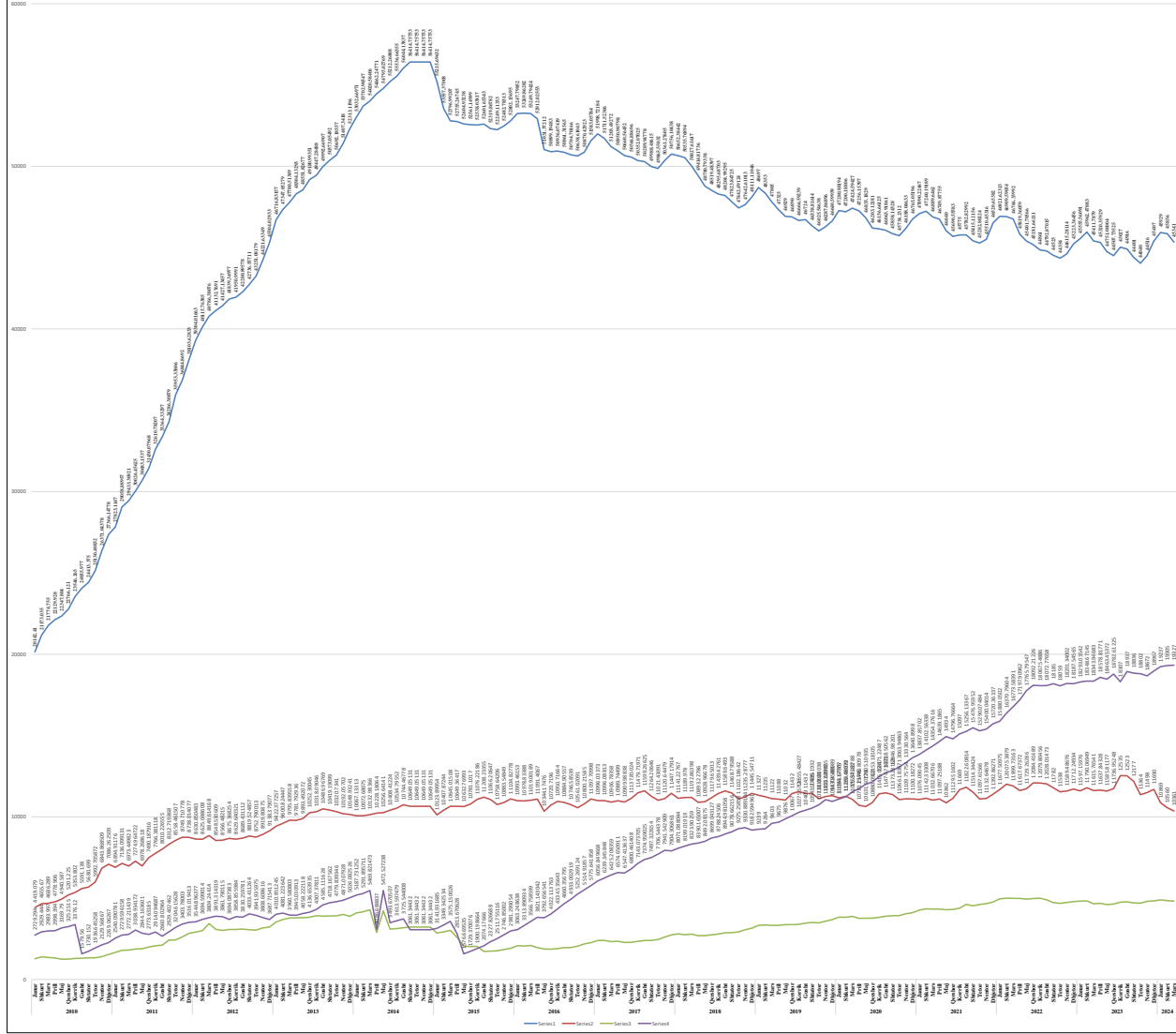
FATURIM-ARKEËTIMET DHE NDRYSHIMI I GJENDJES DEBITORE GJTE VITIT 2024 (000,LEKE)									
Viti 2024	Te arketueshme	Faturuar 2024	arketimi per fakturat e 2024	Arketimi per fakturat e 2007-2022	Arketimi total	Te Arketueshme per energjine e faturuar ne vitin 2024	Ndryshimi I gjendjes se Llogarive te arketueshme gjate vitit 2024	Shuarje Detyrimesh	
			5	7	6=5+7	9=(2-5)			
	80,898,725	2	5 <td>7 <td>6=5+7 <td>9=(2-5)</td> <td></td> <td colspan="2"></td> </td></td>	7 <td>6=5+7 <td>9=(2-5)</td> <td></td> <td colspan="2"></td> </td>	6=5+7 <td>9=(2-5)</td> <td></td> <td colspan="2"></td>	9=(2-5)			
Janar	80,868,782	7,374,630	43,814	7,300,873	7,344,687	7,330,816	29,943	0	0
Shkurt	80,512,066	6,650,006	4,919,897	2,086,825	7,006,722	1,730,109	356,716	0	0
Mars	79,792,096	6,078,325	5,882,823	915,472	6,798,295	195,502	719,970	0	0
Prill								0	0
Maj								0	0
Qershor								0	0
Korrrik								0	0
Gusht								0	0
Shtator								0	0
Tetor								0	0
Neutor								0	0
Dhjetor								0	0
Total		20,102,961			21,149,704				

Burimi: OSHEE Group sha

ECURIA E GJENDJES DEBITORE NDAJ OPERATORIT TË SHËRNDARJES SIPAS KATEGORIVE 2010-2024 (000 000 LEKË)

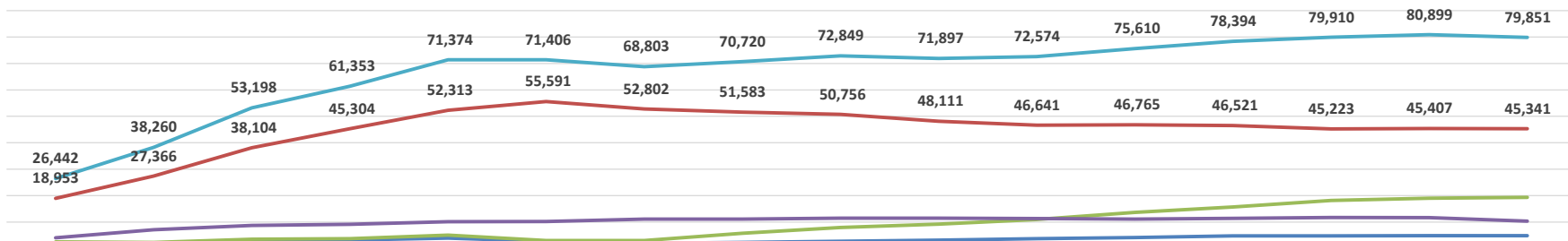
Shprehja	2010	2011	2012	2013	2014	2015	2016	2017	2018	2019	2020	2021	2022	2023	2024
Shprehja	1278	1278	1278	1278	1278	1278	1278	1278	1278	1278	1278	1278	1278	1278	1278
2010	1278	1278	1278	1278	1278	1278	1278	1278	1278	1278	1278	1278	1278	1278	1278
2011	1278	1278	1278	1278	1278	1278	1278	1278	1278	1278	1278	1278	1278	1278	1278
2012	1278	1278	1278	1278	1278	1278	1278	1278	1278	1278	1278	1278	1278	1278	1278
2013	1278	1278	1278	1278	1278	1278	1278	1278	1278	1278	1278	1278	1278	1278	1278
2014	1278	1278	1278	1278	1278	1278	1278	1278	1278	1278	1278	1278	1278	1278	1278
2015	1278	1278	1278	1278	1278	1278	1278	1278	1278	1278	1278	1278	1278	1278	1278
2016	1278	1278	1278	1278	1278	1278	1278	1278	1278	1278	1278	1278	1278	1278	1278
2017	1278	1278	1278	1278	1278	1278	1278	1278	1278	1278	1278	1278	1278	1278	1278
2018	1278	1278	1278	1278	1278	1278	1278	1278	1278	1278	1278	1278	1278	1278	1278
2019	1278	1278	1278	1278	1278	1278	1278	1278	1278	1278	1278	1278	1278	1278	1278
2020	1278	1278	1278	1278	1278	1278	1278	1278	1278	1278	1278	1278	1278	1278	1278
2021	1278	1278	1278	1278	1278	1278	1278	1278	1278	1278	1278	1278	1278	1278	1278
2022	1278	1278	1278	1278	1278	1278	1278	1278	1278	1278	1278	1278	1278	1278	1278
2023	1278	1278	1278	1278	1278	1278	1278	1278	1278	1278	1278	1278	1278	1278	1278
2024	1278	1278	1278	1278	1278	1278	1278	1278	1278	1278	1278	1278	1278	1278	1278

ECURIA E GJENDJES DEBITORE NDAJ OPERATORIT TË SHËRNDARJES SIPAS KATEGORIVE 2010-2024 (000 000 LEKË)



	31.12.2009	31.12.2010	31.12.2011	31.12.2012	31.12.2013	31.12.2014	31.12.2015	31.12.2016	31.12.2017	31.12.2018	31.12.2019	31.12.2020	31.12.2021	31.12.2022	31.12.2023	31.03.2024
Buxhetore	988	1,538	2,841	3,223	3,886	2,691	1,915	2,264	2,741	3,157	3,681	4,104	4,761	4,787	4,835	4,822
Familjare	18,953	27,366	38,104	45,304	52,313	55,591	52,802	51,583	50,756	48,111	46,641	46,765	46,521	45,223	45,407	45,341
JoBuxhetore	2,468	2,269	3,516	3,688	5,026	2,964	2,981	5,776	7,904	9,183	10,947	13,641	15,720	18,188	18,967	19,327
Privat	4,033	7,086	8,738	9,138	10,149	10,161	11,105	11,098	11,447	11,446	11,304	11,100	11,393	11,712	11,690	10,361
Total	26,442	38,260	53,198	61,353	71,374	71,406	68,803	70,720	72,849	71,897	72,574	75,610	78,394	79,910	80,899	79,851

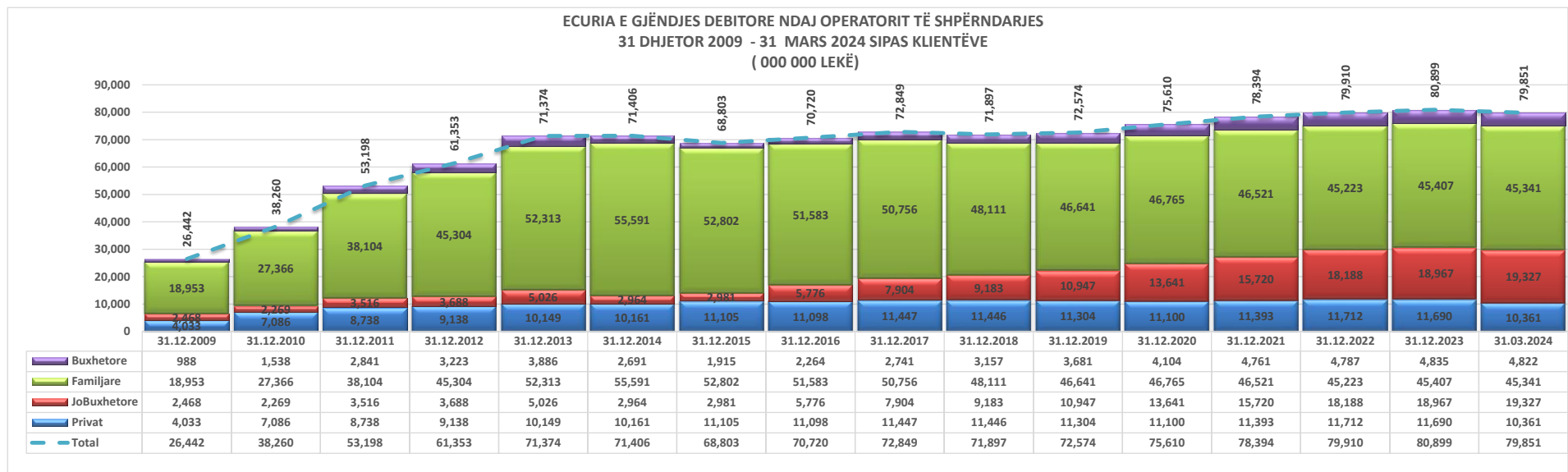
**ECURIA E GJËNDJES DEBITORE NDAJ OPERATORIT TË SHPËRNDARJES
31 DHJETOR 2009 - 31 MARS 2024 SIPAS KLIENTËVE
(000 000 LEKË)**



	31.12.2009	31.12.2010	31.12.2011	31.12.2012	31.12.2013	31.12.2014	31.12.2015	31.12.2016	31.12.2017	31.12.2018	31.12.2019	31.12.2020	31.12.2021	31.12.2022	31.12.2023	31.03.2024
Buxhetore	988	1,538	2,841	3,223	3,886	2,691	1,915	2,264	2,741	3,157	3,681	4,104	4,761	4,787	4,835	4,822
Familjare	18,953	27,366	38,104	45,304	52,313	55,591	52,802	51,583	50,756	48,111	46,641	46,765	46,521	45,223	45,407	45,341
JoBuxhetore	2,468	2,269	3,516	3,688	5,026	2,964	2,981	5,776	7,904	9,183	10,947	13,641	15,720	18,188	18,967	19,327
Privat	4,033	7,086	8,738	9,138	10,149	10,161	11,105	11,098	11,447	11,446	11,304	11,100	11,393	11,712	11,690	10,361
Total	26,442	38,260	53,198	61,353	71,374	71,406	68,803	70,720	72,849	71,897	72,574	75,610	78,394	79,910	80,899	79,851

Burimi: FSHU sha / (OSHEE Group sha)

	31.12.2009	31.12.2010	31.12.2011	31.12.2012	31.12.2013	31.12.2014	31.12.2015	31.12.2016	31.12.2017	31.12.2018	31.12.2019	31.12.2020	31.12.2021	31.12.2022	31.12.2023	31.03.2024
Privat	4,033	7,086	8,738	9,138	10,149	10,161	11,105	11,098	11,447	11,446	11,304	11,100	11,393	11,712	11,690	10,361
JoBuxhetore	2,468	2,269	3,516	3,688	5,026	2,964	2,981	5,776	7,904	9,183	10,947	13,641	15,720	18,188	18,967	19,327
Familjare	18,953	27,366	38,104	45,304	52,313	55,591	52,802	51,583	50,756	48,111	46,641	46,765	46,521	45,223	45,407	45,341
Buxhetore	988	1,538	2,841	3,223	3,886	2,691	1,915	2,264	2,741	3,157	3,681	4,104	4,761	4,787	4,835	4,822
Total	26,442	38,260	53,198	61,353	71,374	71,406	68,803	70,720	72,849	71,897	72,574	75,610	78,394	79,910	80,899	79,851

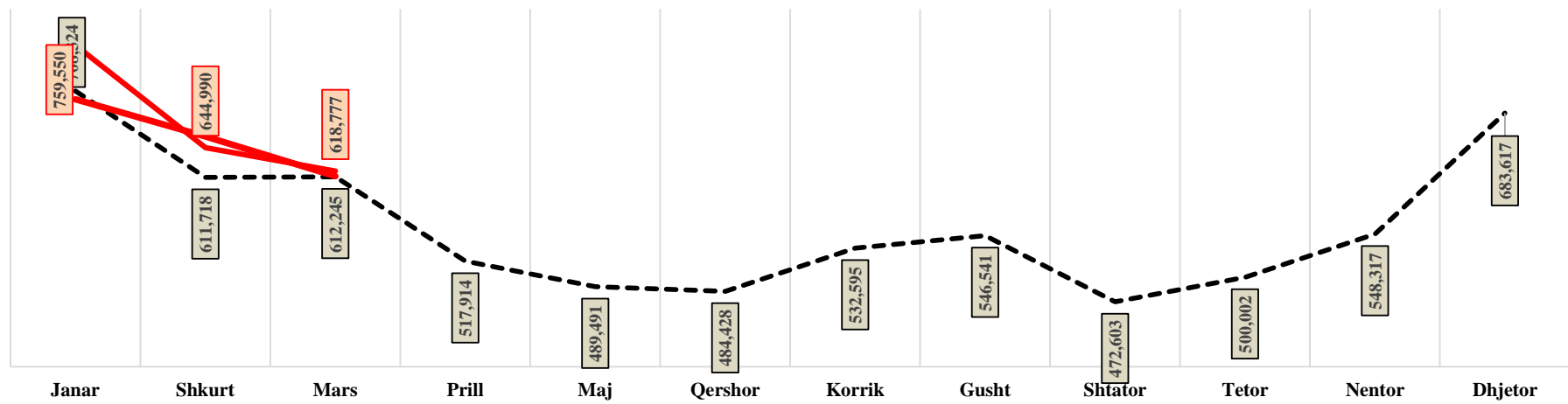


Burimi: FSHU sha / (OSHEE Group sha)

	Janar	Shkurt	Mars	Prill	Maj	Qershor	Korrik	Gusht	Shtator	Tetor	Nentor	Dhjetor	VITI
2009	644,987	568,719	589,279	462,709	448,118	427,694	467,863	493,772	439,604	489,635	557,554	639,797	6,229,731
2010	675,343	608,940	610,583	506,275	476,500	464,120	499,241	512,024	460,893	509,793	532,126	660,665	6,516,503
2011	708,264	623,208	634,087	536,286	533,564	495,139	545,315	567,282	512,979	551,132	619,655	710,870	7,037,781
2012	733,973	680,054	596,982	537,950	483,891	489,723	536,891	540,566	469,527	484,706	548,289	749,398	6,851,949
2013	743,846	665,392	673,578	545,600	502,945	511,390	546,696	565,789	493,056	532,555	589,808	774,403	7,145,060
2014	733,468	631,678	645,837	578,948	541,016	501,088	530,554	556,098	492,427	537,280	546,419	640,431	6,935,244
2015	686,041	591,978	594,775	514,282	472,405	465,730	536,160	529,208	459,012	476,969	519,281	649,026	6,494,867
2016	671,884	559,772	573,419	469,803	477,468	463,248	509,916	514,034	451,153	480,236	540,024	688,760	6,399,717
2017	715,886	562,270	545,214	493,731	475,055	485,386	529,805	543,145	451,103	482,629	546,256	667,841	6,498,322
2018	659,778	590,823	597,595	468,417	467,468	468,885	508,892	539,134	465,468	471,407	517,882	681,162	6,436,911
2019	735,813	586,992	559,331	500,485	501,061	500,729	533,842	565,788	471,684	472,833	507,920	639,953	6,576,432
2020	708,611	607,803	589,581	489,236	464,183	463,789	527,801	533,336	482,358	506,280	562,127	669,977	6,605,082
2021	724,554	629,962	662,183	590,810	504,970	519,563	591,485	603,872	485,288	523,606	552,840	747,790	7,136,936
2022	774,084	656,456	698,991	556,264	504,224	525,509	591,875	587,527	481,886	480,961	536,263	650,564	7,044,604
2023	774,084	656,456	698,991	556,264	504,224	525,509	591,875	587,527	481,886	480,961	536,263	650,564	7,044,604
2024	759,550	644,990	618,777										

	Janar	Shkurt	Mars	Prill	Maj	Qershor	Korrik	Gusht	Shtator	Tetor	Nentor	Dhjetor
Mesatarja	710,946	616,664	612,704									
2024	759,550	644,990	618,777									

MESATARJA 14 VJEÇARE E ENERGJISË TOTALE NË RRJETIN E SHPËRNDARJES SIPAS MUAJVE TË VITIT (MWh) KRAHASUAR ME VITIN 2024



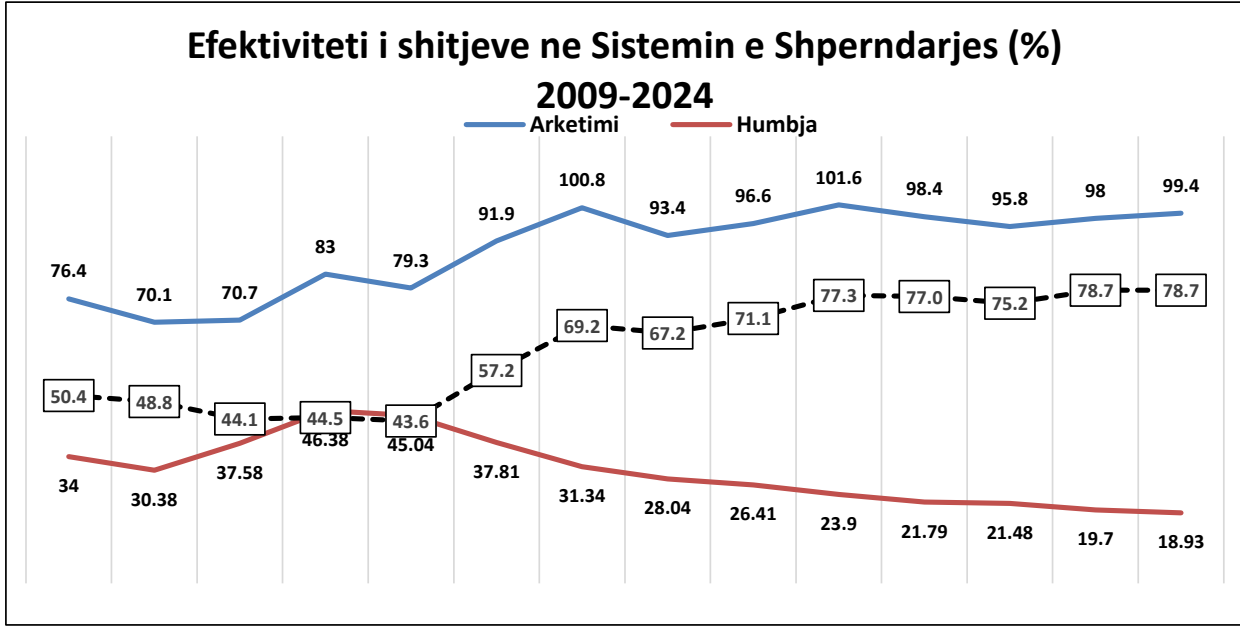
NIVELI I HUMBJEVE (%) 2009-2024												
	Janar	Shkurt	Mars	Prill	Maj	Qershor	Korrik	Gusht	Shtator	Tetor	Nentor	Dhjetor
2009	40.75	37.05	38.05	32.93	33.44	30.75	32.60	30.20	25.34	30.67	33.44	36.89
2010	38.62	35.41	36.90	31.37	35.17	31.45	26.94	29.69	21.47	20.61	22.16	29.05
2011	55.55	38.00	36.95	23.11	24.85	21.29	21.88	19.41	22.95	25.15	32.20	35.70
2012	35.72	59.16	55.23	45.41	38.87	39.77	45.51	45.51	42.09	35.53	41.89	49.32
2013	51.12	48.71	48.29	39.66	39.52	40.33	43.33	38.50	35.08	45.98	48.08	53.04
2014	47.00	42.14	42.78	35.69	36.85	34.10	36.59	36.36	31.67	34.52	32.88	37.54
2015	36.68	31.82	32.88	30.54	31.24	28.60	30.62	29.29	25.30	29.92	30.82	34.50
2016	34.69	29.00	29.93	26.07	26.97	24.35	25.97	25.15	22.12	27.11	29.30	30.99
2017	33.50	27.63	28.66	25.81	25.88	28.31	24.69	23.29	19.79	23.76	23.55	27.90
2018	30.65	24.91	27.22	23.33	23.03	20.76	21.46	20.77	19.32	21.53	22.73	26.70
2019	29.25	23.21	26.5	21.36	22.10	19.92	20.42	19.81	17.54	20.40	21.58	24.76
2020	28.22	21.61	28.36	17.39	19.10	18.65	19.69	18.87	16.80	21.21	22.79	20.49
2021	27.87	20.1	25.92	21.08	17.92	18.34	18.75	17.93	16.22	18.56	19.88	20.25
2022	28.42	19.66	23.68	18.24	17.08	17.30	18.42	16.81	14.94	18.36	18.38	19.76
2023	25.79	19.06	21.05	18.65	16.68	16.04	17.48	16.17	14.80	17.62	18.20	21.52
2024	21.28	16.80	19.38									

Niveli i Arketimeve (%) 2009-2024												
	Janar	Shkurt	Mars	Prill	Maj	Qershor	Korrik	Gusht	Shtator	Tetor	Nentor	Dhjetor
2009	69.32	85.95	74.38	86.58	86.31	76.37	75.40	72.46	83.20	80.82	61.77	70.01
2010	55.37	66.28	86.63	89.46	86.70	79.42	74.84	124.98	84.20	70.81	56.15	66.48
2011	67.26	57.61	87.66	71.61	96.73	73.00	65.00	81.00	66.00	63.86	51.47	87.30
2012	59.80	79.20	78.50	78.00	94.70	83.50	91.60	102.90	74.00	98.00	72.60	78.00
2013	61.40	63.70	86.20	80.70	79.10	69.60	87.90	90.10	78.50	84.30	89.00	102.00
2014	84.90	77.10	85.90	85.50	81.90	80.20	86.70	83.60	102.60	101.00	101.90	141.00
2015	112.70	120.50	103.70	86.60	95.70	97.10	98.40	104.70	95.30	100.30	92.20	100.70
2016	92.10	87.00	95.60	90.10	99.10	92.00	94.20	96.70	91.50	96.70	90.30	96.70
2017	85.20	87.60	105.70	94.50	105.70	91.80	104.80	97.40	94.60	103.80	92.70	100.10
2018	96.39	95.69	105.82	98.92	111.64	100.16	105.00	102.12	93.03	108.76	96.24	108.94
2019	90.7	92.6	99.8	102.4	102.50	94.00	104.40	99.30	93.90	104.70	89.60	110.70
2020	91.4	91.6	77.5	106.8	101.80	102.20	96.80	95.30	96.60	101.10	91.50	101.80
2021	86.4	88.9	102.1	91	101.20	110.70	96.90	94.10	90.70	114.70	96.90	101.50
2022	90.6	84.3	102.7	90.5	98.00	97.90	99.90	105.00	100.60	104.50	102.30	102.90
2023	92.3	94.2	100.2	92.9	113.7	95.70	93.60	101.60	101.20	113.80	103.80	96.70
2024	92	95	101.2									

Efektiviteti i shitjeve (%) 2009-2024												
	Janar	Shkurt	Mars	Prill	Maj	Qershor	Korrik	Gusht	Shtator	Tetor	Nentor	Dhjetor
2009	41.1%	46.8%	53.6%	57.9%	50.8%	52.2%	48.8%	50.6%	62.1%	56.0%	41.1%	44.2%
2010	34.0%	56.0%	56.4%	59.5%	51.5%	51.3%	91.3%	87.9%	66.1%	56.2%	43.7%	47.2%
2011	29.9%	54.3%	45.2%	74.4%	54.9%	51.2%	63.3%	65.3%	50.9%	47.8%	34.9%	56.1%
2012	38.4%	32.1%	34.9%	51.7%	51.0%	55.2%	56.1%	56.1%	42.9%	63.2%	42.2%	39.5%
2013	30.0%	44.2%	41.7%	47.7%	42.1%	52.4%	51.1%	55.4%	51.0%	45.5%	46.2%	47.9%
2014	45.0%	49.7%	48.9%	52.7%	50.6%	57.1%	53.0%	53.2%	70.1%	66.1%	68.4%	88.1%
2015	71.4%	69.6%	60.2%	65.8%	69.3%	68.3%	72.6%	74.0%	71.2%	70.3%	63.8%	66.0%
2016	60.2%	67.0%	66.6%	72.4%	69.6%	69.7%	71.6%	72.4%	71.3%	70.5%	63.8%	66.7%
2017	56.7%	75.4%	70.1%	78.3%	65.8%	78.9%	73.4%	74.7%	75.9%	79.1%	70.9%	72.2%
2018	66.8%	77.0%	75.8%	85.9%	79.4%	82.5%	80.2%	80.9%	75.1%	85.3%	74.4%	79.9%
2019	64.2%	73.4%	80.5%	79.8%	75.3%	83.1%	79.0%	79.6%	77.4%	83.3%	70.3%	83.3%
2020	65.6%	55.5%	88.2%	82.4%	83.1%	77.7%	76.5%	77.3%	80.4%	79.7%	70.6%	80.9%
2021	62.3%	75.6%	71.8%	83.1%	90.4%	78.7%	76.5%	77.2%	76.0%	93.4%	77.6%	80.9%
2022	64.9%	78.4%	74.0%	81.3%	81.0%	81.5%	85.7%	87.3%	85.6%	85.3%	83.5%	82.6%
2023	68.5%	76.2%	79.1%	75.6%	94.7%	80.3%	77.2%	85.2%	86.2%	93.7%	84.9%	75.9%

2024	72.4%	79.0%	81.6%	0.0%	0.0%	0.0%	0.0%	0.0%	0.0%	0.0%	0.0%	0.0%
-------------	-------	-------	-------	------	------	------	------	------	------	------	------	------

	2009	2010	2011	2012	2013	2014	2015	2016	2017	2018	2019	2020	2022	2023	2024
Arketimi	76.4	70.1	70.7	83.0	79.3	91.9	100.8	93.4	96.6	101.6	98.4	95.8	98.0	99.4	95.8
Humbja	34.0	30.4	37.6	46.4	45.0	37.8	31.3	28.0	26.4	23.9	21.8	21.5	19.7	18.9	19.3
Efektiviteti	50.4	48.8	44.1	44.5	43.6	57.2	69.2	67.2	71.1	77.3	77.0	75.2	78.7	80.6	80.6



Burimi FSHU (OSHEE Group sha)

Alokimi i Kapaciteteve në interkoniksion 2024

Ankandi	Periudha	Shqipëri - Mali Zi						Shqipëri - Greqi						Shqipëri - Kosove					
		ATC e ofruar ne Ankand		ATC e shitur ne Ankand		Cmimi Ankandit		ATC e ofruar ne Ankand		ATC e shitur ne Ankand		Cmimi Ankandit		ATC e ofruar ne Ankand		ATC e shitur ne Ankand		Cmimi Ankandit	
		Export	Import	Export	Import	Export	Import	Export	Import	Export	Import	Export	Import	Export	Import	Export	Import	Export	Import
		[MW]	[MW]	[MW]	[MW]	[Euro/MWh]	[Euro/MWh]	[MW]	[MW]	[MW]	[MW]	[Euro/MWh]	[Euro/MWh]	[MW]	[MW]	[MW]	[MW]	[Euro/MWh]	[Euro/MWh]
Janar	01.01.2024-31.01.2024	100	100	100	100	2.21	0.94	200	100	200	100	3.5	1	200	200	200	200	0.70	0.35
Shkurt	01.02.2024-29.02.2024	100	100	100	100	0.92	0.6	200	100	200	99	2.46	0.53	200	200	200	200	0.37	0.17
Mars	01.03.2024-31.03.2024	100	100	100	100	1.01	0.51	200	150	200	150	3.99	0.35	150	150	149	150	0.51	0.38

Disbalancat mujore [MWh] 2024 (3-MUJORI)

Pale Përgjegjëse Balancuese	JANAR		SHKURT		MARS		TOTALI 2024	
	Dit. Negativë [MWh]	Dit. Pozitivë [MWh]	Dit. Negativë [MWh]	Dit. Pozitivë [MWh]	Dit. Negativë [MWh]	Dit. Pozitivë [MWh]	Dit. Negativë [MWh]	Dit. Pozitivë [MWh]
AYEN AS ENERGJI sh.a	67	111	159	48	139	91	366	251
Danske Commodities ne prog	14	70	4	2	13	14	31	86
DEVOLL HYDROPOWER sh.a	230	69	193	49	65	42	488	160
DRAGOBIA ENERGY sh.a	3	100	6	97			10	187
ENER TRADIE shpk	1,144	303	3,003	217	266	288	2,414	808
ES-S ENERGY shpk (DUBRES)	186	143	192	187	409	212	787	545
Furnizuesit i Tregut të Lirë FTL (OSHEE Grup)	6,223	30,230	2,902	22,413	6,805	21,127	15,931	73,770
FUTURE ENERGY ne prog	6	0				222		
FUTURE ENERGY	999	197	774	72	687		2,460	268
G&S ne prog	1	1					1	1
GSA shpk	1,003	668	325	255	821	370	2,149	1,294
KESH (Pale Përgjegjëse Balancuese)	2,355	3,267	2,030	3,256	1,992	6,106	6,377	12,630
KURUM INTERNATIONAL sh.a	700	21	288	158	1,140	585	2,128	764
OST - HUMBLET	2,156	1,281	838	2,864	3,032	1,806		
KOSTT	2,818	10,778					2,818	10,778
ReNergy ne prog					0	2	0	2
Ofvesit i Sherbimit te Balancimit	Ujtë Gjenerimi [MWh]	Rrjetë Gjenerimi [MWh]	Ujtë Gjenerimi [MWh]	Rrjetë Gjenerimi [MWh]	Ujtë Gjenerimi [MWh]	Rrjetë Gjenerimi [MWh]	Ujtë Gjenerimi [MWh]	Rrjetë Gjenerimi [MWh]
Devoll HP Energjia Akt	468		972		1,973		3,412	0
Devoll HP Energjia Shtese Akt							0	0
KURUM INTERNATIONAL Energjia Akt							0	0
Ayen AS Energji Energjia Akt							0	0
Ayen AS Energji Energjia Shtese Akt							0	0
KESH sh.a. Energjia Akt	13,047	2,080	10,855	1,810	6,168	3,499	30,069	7,407
KESH sh.a. Energjia Shtese Akt	10,986	2,871	13,553	1,316	11,527	2,835	36,066	7,022
TOTALI	42,408	52,201	34,093	32,752	35,036	37,199	105,505	115,980
Disbalancat mujore [MWh]		9,793		(1,341)		2,163		10,475

Burimi: OST sh.a

KLIENDET NE TL	KLIENDET E "KUALIFIKUAR" PER VITIN 2024			
	Energjia e faturuar ne [MWh]			
	Janar	Shkurt	Mars	2024
EL220-L220KURUM/337	4,874	4,501	23,996	33,372
Titan T1,T2	9,588	9,037	4,561	23,186
FUSHE KRUIJE 220kV-T2/058	5,383	707	2,988	9,079
N/ST 220/6,3Colacent-T1/336	145.3	1,023	1,734	2,903
N/ST i GSA EL 110kV-T1/694	8,956	8,466	8,959	26,381
N/ST i GSA EL 110kV-T2/960	-	-	-	-
N/ST I CWI Albania T1/148	466	395	531	1,392
N/ST i AES EL 110kV-T1/690	159	22	-	180
N/ST I AES EL 110kV-T2/692	-	118	147	265
HEC Moglice T1,T2,T3	1.4	1	1	3
HEC Peshqesh-T1/633	0.9	9	5	15
Lajthiza T1/742	14.4	22	17	54
HEC Ashta1-T1,HEC Ashta2-T1,	-	-	0.11	0
HEC Banje T1,T2	10.8	12	20	43
HEC Fang-T1,T2.	1.300	35	48	84
Gjenerim KURUM	1.296	5	16	21
FERRO KROM-F1,F2,F3,F4	6,953	6,896	7,392	21,241
TOTAL	36,554	31,249	50,416	118,219

Burimi: OST sha

Devijimet nga programi interkoneksionit 2024 (3-mujori)

<i>Minus = Hyrje</i>		<i>Plus = Dalje</i>		
<i>Data</i>	Janar	Shkurt	Mars	2024
1	411	-16	394	789
2	462	144	428	1,034
3	-120	293	139	312
4	545	378	-250	673
5	375	411	233	1,019
6	309	49	43	401
7	739	185	51	975
8	207	-237	24	-6
9	121	354	-267	208
10	-5	46	401	442
11	311	395	126	832
12	183	910	287	1,380
13	-117	217	364	464
14	61	-41	162	182
15	65	128	15	208
16	1299	-59	13	1,253
17	439	-168	0	271
18	1474	-12	106	1,568
19	1294	-47	-261	986
20	652	-115	-173	364
21	463	70	77	610
22	148	228	118	494
23	-388	-73	365	-96
24	-2	-306	-5	-313
25	154	383	165	702
26	265	649	-248	666
27	67	23	574	664
28	282	174	930	1,386
29	110	255	-432	-67
30	-4		-135	-139
31	-61		153	92
Total	9,793	4,218	3,397	17,408

Burimi: OST sha



Transaksionet e energjisë elektrike të Pjesëmarrësve të Tregut në [MWh] për 2024

Nr.	Subjekti	Lloji transaksionit	Jamar	Shturt	Mars	Total [MWh]				
1	DEVOLL HP	Shkëmbime Cross-Border	AL-GR Greece - IN	-5,209	-7,436	-12,447	-25,182			
			AL-KS Kosovo - IN	0	0	0	0			
			AL-ME Monte Negro - IN	-3,853	-2,671	-3,046	-9,530			
			Total IN	-9,122	-10,067	-15,493	-34,682			
			AL-GR Greece - OUT	28,937	23,164	30,424	78,515			
			AL-KS Kosovo - OUT	0	0	0	0			
		AL-ME Monte Negro - OUT	64,328	47,373	49,103	161,004				
		Total OUT	96,345	70,727	79,527	246,599				
		Prodhimi	81,143	60,660	64,034	205,837				
		Transaksionet e brendshme	Blerje AYEN Energy Trading					0		
			Blerje GEN-I					0		
			Shtije GEN-I					0		
			Total transaksione	0	0	0	0			
			2	AYEN Energy Trading	Shkëmbime Cross-Border	AL-GR Greece - IN	0	-2,424	-5,347	-7,771
AL-KS Kosovo - IN	-1,299					0	-12,761	-14,060		
AL-ME Monte Negro - IN	0					-618	-5,871	-6,491		
Total IN	-1,299					-3,042	-23,981	-28,322		
AL-GR Greece - OUT	1,005	0				0	1,005			
AL-KS Kosovo - OUT	0	966				240	1,206			
AL-ME Monte Negro - OUT	200	5			0	205				
Total OUT	1,205	971			240	2,416				
Transaksionet e brendshme	Blerje AYEN AS Energi	-11,394			-10,332	-17,174.1	-38,905			
	Shtije AYEN AS Energi					579.1	579			
	Shtije Kurum International						0			
	Blerje Kurum International						0			
	Blerje KESH						0			
	Blerje EZ-S ENERGY					-75.1	-75			
	Shtije EZ-S ENERGY	439	1,583	1,723.1	3,746					
	Blerje Danske Commodities				0					
Shtije Danske Commodities				0						
Shtije DEVOLL HP				0						
Blerje KESH				0						
Shtije KESH			88.0	88						
Shtije GEN-I				0						
Shtije NOA ENERGY TRADE		36	400.0	436						
Blerje NOA ENERGY TRADE	-136			-136						
Shtije SOLE24	11,185	10,784		21,969						
Blerje SOLE24			38,204.0	38,204						
Shtije FUTURE ENERGY TRADING AND EXCHANGE DYNAMICS				0.0						
Total transaksione	94	2,071	23,741	25,906						
3	AYEN AS Energi	Shkëmbime Cross-Border	AL-GR Greece - IN	0	0	0	0			
			AL-KS Kosovo - IN	-274	-1,795	-210	-2,279			
			AL-ME Monte Negro - IN	-513	-698	-1,669	-2,885			
			Total IN	-792	-2,493	-1,879	-5,164			
			AL-GR Greece - OUT	23,002	11,364	9,211	43,577			
			AL-KS Kosovo - OUT	19,156	9,591	3,129	32,076			
		AL-ME Monte Negro - OUT	9,966	3,301	1,735	15,001				
		Total OUT	52,124	24,255	14,075	90,654				
		Prodhimi	62,926.2	32,094.3	28,795.0	123,815.5				
		Total Prodhim	62,926.2	32,094.3	28,795.0	123,815.5				
		Transaksionet e brendshme	Shtije AYEN Energy Trading	11,394	10,332	17,174.1	38,905			
			Blerje AYEN Energy Trading			-579.10	-579			
			Shtije FUTURE ENERGY TRADING AND EXCHANGE DYNAMICS				0			
			Blerje EZ-S ENERGY				0			
Total transaksione	11,394		10,332	16,595	38,326					
4	ENERGH ASHTA		Shkëmbime Cross-Border	AL-GR Greece - IN				0		
				AL-KS Kosovo - IN				0		
				AL-ME Monte Negro - IN				0		
		Total IN		0	0	0	0			
		AL-GR Greece - OUT					0			
		AL-KS Kosovo - OUT					0			
		AL-ME Monte Negro - OUT				0				
		Total OUT	0	0	0	0				
		Prodhimi	29,854	23,905	19,068	72,827				
		Total Prodhim	29,854	23,905	19,068	72,827				
		Transaksionet e brendshme	Shtije FTL	29,854	23,905	19,068	72,827			
			Total transaksione	29,854	23,905	19,068	72,827			
			5	GEN-I	Shkëmbime Cross-Border	AL-GR Greece - IN	-4,629	-7,480	-6,814	-18,923
						AL-KS Kosovo - IN	4,008	-4,722	-3,997	-4,679
AL-ME Monte Negro - IN	-35,738					-35,790	-34,511	-106,036		
Total IN	-48,372					-47,998	-45,322	-141,629		
AL-GR Greece - OUT	32,894					41,212	36,365	110,911		
AL-KS Kosovo - OUT	9,197					550	2,107	11,779		
AL-ME Monte Negro - OUT	6,340	6,219			6,438	19,005				
Total OUT	48,439	47,987			45,320	142,146				
Transaksionet e brendshme	Blerje ALPEX	-24					-24			
	Shtije ALPEX				8		8			
	Blerje KURUM	-443					-443			
	Blerje AYEN Energy Trading						0			
	Shtije ENER TRADE						2			
	Shtije GSA						0			
	Blerje KESH			-1,900	-1,900					
	Shtije KESH			1,840	1,840					
Blerje DEVOLL HP				0						
Shtije DEVOLL HP				0						
Total transaksione	-467	8	-58	-517						
6	GSA	Shkëmbime Cross-Border	AL-GR Greece - IN	-1,393	-6,393	-7,587	-15,373			
			AL-KS Kosovo - IN	-16,513	-10,819	-14,252	-41,384			
			AL-ME Monte Negro - IN	0	0	0	0			
			Total IN	-17,906	-17,212	-21,839	-56,957			
			AL-GR Greece - OUT	3,137	1,671	-2,528	7,334			
			AL-KS Kosovo - OUT	1,214	5,699	4,562	11,385			
		AL-ME Monte Negro - OUT	20	62	2,086	2,168				
		Total OUT	4,371	7,342	9,174	20,887				
		Shtije Konsumatorëve të Kualifikuar	13,525	9,870	12,957	36,352				
		Prodhimi			292	292				
		Transaksionet e brendshme	Blerje KESH				0			
			Shtije KESH				0			
			Blerje ENER TRADE				0			
			Blerje GEN-I				0			
Blerje KURUM					0					
Shtije KURUM					0					
Total transaksione	13,525		9,870	13,249	36,664					
7	DANSKE COMMODITIES		Shkëmbime Cross-Border	AL-GR Greece - IN	-13,364	-7,575	-11,396	-32,337		
		AL-KS Kosovo - IN		-2,347	0	-1,216	-3,563			
		AL-ME Monte Negro - IN		-23,247	-16,378	-28,336	-67,961			
		Total IN		-38,958	-23,953	-40,950	-103,861			
		AL-GR Greece - OUT		15,838	15,639	24,483	55,960			
		AL-KS Kosovo - OUT		19,610	234	4,060	24,003			
		AL-ME Monte Negro - OUT	5,517	7,088	7,489	20,074				
		Total OUT	38,965	23,040	36,032	98,037				
		Transaksionet e brendshme	Blerje KESH			-2,740.0	-2,740.00			
			Shtije KESH			2,088.0	2,088.00			
			Blerje AYEN Energy Trading				0.00			
			Shtije AYEN Energy Trading				0.00			
			Blerje ALPEX	-249.8	-574	-161.1	-984.91			
			Shtije ALPEX	187	1,401	5,922.0	7,590.27			
Blerje ENER TRADE					0.00					
Shtije ENER TRADE			7		7.00					
Blerje Reurgy TR			-112.0	-112.00						
Shtije Reurgy TR				4.00						
Total transaksione	-43	914	4,917	5,873						
8	NOA ENERGY TRADE	Shkëmbime Cross-Border	AL-GR Greece - IN	-58,073	0	0	-58,073			
			AL-KS Kosovo - IN	-971	0	0	-971			
			AL-ME Monte Negro - IN	-10,628	-687	-1,460	-12,775			
			Total IN	-69,672	-687	-1,460	-71,819			
			AL-GR Greece - OUT	23,627	26,534	30,868	81,029			
			AL-KS Kosovo - OUT	98,533	7,046	10,916	116,495			
		AL-ME Monte Negro - OUT	1,078	9,867	8,017	18,992				
		Total OUT	123,238	43,447	49,801	216,516				
		Shtije Konsumatorëve të Kualifikuar				0				
		Blerje AYEN Energy Trading		-36	-400	-436				
		Shtije AYEN Energy Trading	136			136				
		Blerje KESH				0				
		Shtije KESH			400	400				
		Shtije FTL				0				
Blerje SOLE24	-53,702	-45,505	-72,753	-171,960						
Shtije SOLE24				0						

			Blerje KURUM				0		
			Shitje KURUM		2,781	24,382	27,163		
			Total transaksione	-83,566	-42,760	-48,371	-144,697		
9	KURUM INTERNATIONAL	Shkembime Cross-Border	AL-GR Greece - IN	0	0	0	0		
			AL-KS Kosova - IN	0	0	0	0		
			AL-ME Monte Negro - IN	0	0	0	0		
			Total IN	0	0	0	0		
			AL-GR Greece - OUT	0	0	0	0		
			AL-KS Kosova - OUT	0	0	0	0		
		AL-ME Monte Negro - OUT	0	0	0	0			
		Total OUT	0	0	0	0			
		Prodhim	48,108	37,553	34,307	120,168			
		Total Prodhim	48,108	37,553	34,307	120,168			
		Shitje Konsumatoreve te Kualifikuar	5,148	5,645	24,340	35,133			
		Blerje GRA				0			
		Shitje GSA				0			
		Shitje Aven Energy Trading				0			
		Blerje Aven Energy Trading				0			
		Blerje GEN-I				0			
		Shitje GEN-I	443			443			
		Shitje SOLE 24	42,517	34,689	34,549	111,755			
Shitje NOA Energy Trade				0					
Blerje NOA Energy Trade		-2,781	-24,382	-27,163					
Total transaksione	48,108	37,553	34,307	120,168					
				0					
10	AXPO ALBANIA	Shkembime Cross-Border	AL-GR Greece - IN	0	0	0	0		
			AL-KS Kosova - IN	-2,780	-2,415	0	-5,213		
			AL-ME Monte Negro - IN	-13,392	-11,778	-7,809	-33,039		
			Total IN	-16,190	-14,193	-7,809	-38,252		
			AL-GR Greece - OUT	14,685	12,298	7,518	34,501		
			AL-KS Kosova - OUT	1,505	1,875	0	3,380		
		AL-ME Monte Negro - OUT	0	20	351	371			
		Total OUT	16,190	14,193	7,869	38,252			
		Total transaksione	0	0	0	0			
						0			
		11	EFT (Energy Financing Team) TIRANA	Shkembime Cross-Border	AL-GR Greece - IN	-3,814	-2,753	-3,056	-10,223
					AL-KS Kosova - IN	-6,653	-480	0	-7,133
AL-ME Monte Negro - IN	-15,000				-22,827	-21,935	-59,762		
Total IN	-25,467				-26,060	-25,891	-77,118		
AL-GR Greece - OUT	21,205				23,157	21,514	65,876		
AL-KS Kosova - OUT	646				0	0	646		
AL-ME Monte Negro - OUT	3,516			2,903	3,496	9,915			
Total OUT	25,467			26,060	25,010	76,537			
Blerje ALPEX						-4			
Shitje ALPEX						282			
Total transaksione	0			0	0	282			
						281			
12	ReNRGY	Shkembime Cross-Border	AL-GR Greece - IN	-7,293	-4,052	-5,542	-16,890		
			AL-KS Kosova - IN	-3,410	-1,534	-2,920	-7,864		
			AL-ME Monte Negro - IN	-15,472	-19,328	-14,260	-49,060		
			Total IN	-26,175	-24,914	-22,722	-73,813		
			AL-GR Greece - OUT	17,301	18,699	15,298	51,298		
			AL-KS Kosova - OUT	5,255	1,006	707	6,968		
		AL-ME Monte Negro - OUT	3,523	2,413	3,758	9,694			
		Total OUT	26,081	22,118	19,763	67,962			
		Shitje ALPEX	92,0	2,829,0	4,424,8	7,349			
		Blerje ALPEX		-32	-1,691,5	-1,723			
		Blerje KESH				0			
		Shitje KESH			112,0	112			
Shitje Danske Commodities Albania			112,0	112					
Total transaksione	92	2,797	2,887	5,849					
				0					
13	EZ5 ENERGY	Shkembime Cross-Border	AL-GR Greece - IN	0	0	0	0		
			AL-KS Kosova - IN	0	0	0	0		
			AL-ME Monte Negro - IN	0	-12	0	-12		
			Total IN	0	-12	0	-12		
			AL-GR Greece - OUT	0	0	0	0		
			AL-KS Kosova - OUT	0	0	0	0		
		AL-ME Monte Negro - OUT	0	8	0	8			
		Total OUT	0	8	0	8			
		Prodhim	980	1,345	1,707	4,032			
		Total Prodhim	980	1,345	1,707	4,032			
		Kosumi	664,36	245,6	312,31	623,17			
		Blerje KESH				-160			
		Shitje KESH				0			
		Blerje AVEN Energy Trading	-439,2	-1,883	-1,723	-3,746			
		Shitje AVEN Energy Trading			75	75,1			
		Blerje AVEN AS ENERGY				0,0			
		Blerje ENER TRADE				0			
		Shitje FTL				0			
Shitje SOLE 24				0					
Shitje SOLE 24		32,60		32,0					
Blerje ALPEX	-4,80	-89,60	-164,38	-238,78					
Shitje ALPEX	729,3	504	526,60	1,760,10					
Total transaksione	285	-1,107	-1,446	-2,267					
				0					
14	ENSCO Trading	Shkembime Cross-Border	AL-GR Greece - IN	-2,895	-2,292	-2,258	-7,445		
			AL-KS Kosova - IN	0	0	0	0		
			AL-ME Monte Negro - IN	0	0	0	0		
			Total IN	-2,895	-2,292	-2,258	-7,445		
			AL-GR Greece - OUT	0	0	0	0		
			AL-KS Kosova - OUT	0	0	0	0		
AL-ME Monte Negro - OUT	2,895	2,292	2,258	7,445					
Total OUT	2,895	2,292	2,258	7,445					
Total transaksione	0	0	0	0					
				0					
15	ENER TRADE	Shkembime Cross-Border	AL-GR Greece - IN	-334	-663	-1,213	-2,210		
			AL-KS Kosova - IN	-579	0	0	-579		
			AL-ME Monte Negro - IN	-8,423	-6,603	-3,551	-18,579		
			Total IN	-9,336	-7,268	-4,764	-21,368		
			AL-GR Greece - OUT	-373	4,621	7,519	12,712		
			AL-KS Kosova - OUT	13	0	800	813		
		AL-ME Monte Negro - OUT	0	260	597	857			
		Total OUT	288	4,881	8,916	14,382			
		Shitje Konsumatoreve te Kualifikuar	8,746	8,281	4,987	21,984			
		Blerje INFO Telecom sh.p.k.(INFO-TELECOM)				0			
		Shitje INFO Telecom sh.p.k.(INFO-TELECOM)				0			
		Blerje TIRANA INTERNATIONAL DEVELOPMENT sh.a.(TID)				0			
		Shitje TIRANA INTERNATIONAL DEVELOPMENT sh.a.(TID)				0			
		Shitje Danske Commodities Albania				0			
		Blerje Danske Commodities Albania			7	-7			
		Shitje EZ5 ENERGY				0			
		Shitje GSA				0			
		Shitje FTL				0			
Blerje GEN-I			-2,0	-2					
Shitje KESH			400,0	400					
Blerje KESH			1,600,0	-1,600					
Blerje ALPEX	-2	-8,919	-8,227,6	-14,649					
Shitje ALPEX	7	62	790,9	860					
Total transaksione	8,751	2,387	-4,152	6,986					
				0					
16	TIRANA INTERNATIONAL DEVELOPMENT sh.a.(TID)	Shkembime Cross-Border	AL-GR Greece - IN	0	0	0	0		
			AL-KS Kosova - IN	0	0	0	0		
			AL-ME Monte Negro - IN	0	0	0	0		
			Total IN	0	0	0	0		
			AL-GR Greece - OUT	0	0	0	0		
			AL-KS Kosova - OUT	0	0	0	0		
		AL-ME Monte Negro - OUT	0	0	0	0			
		Total OUT	0	0	0	0			
		Blerje Ener Trade				0			
		Shitje ENER TRADE				0			
		Blerje KESH				0			
		Shitje KESH				0			
Blerje INFO Telecom sh.p.k.				0					
Shitje INFO Telecom sh.p.k.				0					
Total transaksione	0	0	0	0					
				0					
17	INFO Telecom sh.p.k.	Shkembime Cross-Border	AL-GR Greece - IN	0	0	0	0		
			AL-KS Kosova - IN	0	0	0	0		
			AL-ME Monte Negro - IN	0	0	0	0		
			Total IN	0	0	0	0		
			AL-GR Greece - OUT	0	0	0	0		
			AL-KS Kosova - OUT	0	0	0	0		
		AL-ME Monte Negro - OUT	0	0	0	0			
		Total OUT	0	0	0	0			
		Blerje Ener Trade				0			
		Shitje Ener Trade				0			
		Shitje FTL				0			
		Blerje KESH				0			
Blerje TIRANA INTERNATIONAL DEVELOPMENT sh.a.(TID)				0					
Shitje TIRANA INTERNATIONAL DEVELOPMENT sh.a.(TID)				0					
Total transaksione	0	0	0	0					
				0					
				0					

18	ABESP Trading & Consulting sh.p.k (AESPF)	Shkembime Cross-Border	AL-KS Kosovo - IN				0	
			AL-ME Monte Negro - IN				0	
			Total IN	0	0	0	0	
			AL-GR Greece - OUT				0	
			AL-KS Kosovo - OUT				0	
		AL-ME Monte Negro - OUT				0		
		Total OUT	0	0	0	0		
		Transaksionet e brendshme	Shirje KESH				160	160
			Blerje FUTURE ENT				-160	-160
			Shirje TRANA INTERNATIONAL DEVELOPMENT sh.a./TID				0	0
Total transaksione	0		0	0	0			
19	ADA Solar SE sh.p.k	Shkembime Cross-Border	AL-GR Greece - IN	-4,199	-2,634	-3,425	-10,258	
			AL-KS Kosovo - IN	0	0	0	0	
			AL-ME Monte Negro - IN	-235	-120	-250	-585	
			Total IN	-4,434	-2,754	-3,655	-10,843	
			AL-GR Greece - OUT	235	120	250	585	
		AL-KS Kosovo - OUT	0	0	0	0		
		AL-ME Monte Negro - OUT	4,434	2,634	3,425	10,258		
		Total OUT	4,434	2,754	3,655	10,843		
		Transaksionet e brendshme	-				0	0
			Total transaksione	0	0	0	0	
20	DRAGOBIA ENERGY	Shkembime Cross-Border	AL-GR Greece - IN				0	
			AL-KS Kosovo - IN				0	
			AL-ME Monte Negro - IN				0	
			Total IN	0	0	0	0	
			AL-GR Greece - OUT				0	
		AL-KS Kosovo - OUT				0		
		AL-ME Monte Negro - OUT				0		
		Total OUT	0	0	0	0		
		Transaksionet e brendshme	Prodhimi	5,575.25	4,690.15	6,839.7	17,105.10	
			Total Prodhimi	5,575.25	4,690.15	6,839.7	17,105.10	
Konsumi				419	419			
Total Konsumi				419.5	419.46			
Blerje ALPEX					-26.40			
Shirje ALPEX				0.99				
Shirje FTL	5,575.25	4,690.15	5,551	16,216.70				
Total transaksione	5,575.25	4,070	20,443	16,216.70				
21	Duferco Shqipëri	Shkembime Cross-Border	AL-GR Greece - IN	0			0	
			AL-KS Kosovo - IN	0			0	
			AL-ME Monte Negro - IN	-1	0	0	-1	
			Total IN	-1	0	0	-1	
			AL-GR Greece - OUT	1			1	
		AL-KS Kosovo - OUT	0			0		
		AL-ME Monte Negro - OUT	0			0		
		Total OUT	1	0	0	1		
		Transaksionet e brendshme	Prodhimi				0.00	
			Total Prodhimi	0.0	0.0	0.0	0.00	
Shirje FTL	0		0	0	0.00			
Total transaksione	0		0	0	0.00			
22	ENERGY 24	Shkembime Cross-Border	AL-GR Greece - IN				0	
			AL-KS Kosovo - IN				0	
			AL-ME Monte Negro - IN				0	
			Total IN	0	0	0	0	
			AL-GR Greece - OUT				0	
		AL-KS Kosovo - OUT				0		
		AL-ME Monte Negro - OUT				0		
		Total OUT	0	0	0	0		
		Transaksionet e brendshme	Prodhimi				0.00	
			Total Prodhimi	0.0	0.0	0.0	0.00	
Shirje FTL	0		0	0	0.00			
Total transaksione	0		0	0	0.00			
23	FUTURE ENERGY TRADING AND EXCHANGE DYNAMICS	Shkembime Cross-Border	AL-GR Greece - IN	0	0	0	0	
			AL-KS Kosovo - IN	-4,126	-6,139	-5,793	-20,058	
			AL-ME Monte Negro - IN	-2,364	-1,105	-225	-3,694	
			Total IN	-6,490	-7,244	-10,018	-23,852	
			AL-GR Greece - OUT	162	0	0	162	
		AL-KS Kosovo - OUT	25	0	2	27		
		AL-ME Monte Negro - OUT	0	0	0	0		
		Total OUT	187	0	2	189		
		Transaksionet e brendshme	Shirje Komercialeve te Kualifikuar	6,309	7,042	8,869.4	22,220	
			Blerje ALPEX				-87	
Shirje Aven Energy Trading					289			
Blerje Aven Energy Trading					-465.4			
Blerje Aven AS Energji					1,451.9			
Shirje Aven AS Energji				160.0				
Shirje Aven AS Energji				0				
Total transaksione	6,309	7,244	10,016	23,569				
24	PROINFINT CONSULTING	Shkembime Cross-Border	AL-GR Greece - IN				0	
			AL-KS Kosovo - IN				0	
			AL-ME Monte Negro - IN				0	
			Total IN	0	0	0	0	
			AL-GR Greece - OUT				0	
		AL-KS Kosovo - OUT				0		
		AL-ME Monte Negro - OUT				0		
		Total OUT	0	0	0	0		
		Transaksionet e brendshme	Blerje FUTURE ENERGY TRADING AND EXCHANGE DYNAMICS				160	
			Shirje Aven Energy Trading				160	
Shirje FTL					-465			
Blerje ALPEX					1,452			
Shirje KESH					0			
Total transaksione	0	0	1,147	1,147				
25	SOLE24 DOOEL SHKUP DEGA NE SHQIPERI	Shkembime Cross-Border	AL-GR Greece - IN				0	
			AL-KS Kosovo - IN				0	
			AL-ME Monte Negro - IN				0	
			Total IN	0	0	0	0	
			AL-GR Greece - OUT				0	
		AL-KS Kosovo - OUT				0		
		AL-ME Monte Negro - OUT				0		
		Total OUT	0	0	0	0		
		Transaksionet e brendshme	Blerje AVEN ENERGY	-11,185	-10,784	-38,204	-60,173	
			Shirje AVEN ENERGY				0	
Blerje EZ-5					-32			
Shirje EZ-5					0			
Blerje KIRIM	-42,517		-34,689	-34,549	-111,755			
Blerje NOA ENERGY TRADE				0				
Shirje NOA ENERGY TRADE	53,702	45,505	72,753	171,960				
Total transaksione	0	0	0	0				
26	KESH sh.a.	Shkembime Cross-Border	AL-GR Greece - IN	0	0	30	30	
			AL-KS Kosovo - IN	-750	-6,731	12,380	5,399	
			AL-ME Monte Negro - IN	0	0	2,816	2,816	
			Total IN	-750	-6,731	15,776	8,295	
			AL-GR Greece - OUT	0	0	0	0	
		AL-KS Kosovo - OUT	6,320	0	0	6,320		
		AL-ME Monte Negro - OUT	0	0	0	0		
		Total OUT	6,320	0	0	6,320		
		Transaksionet e brendshme	Shirje FTL	403,231	406,089	285,892	1,095,212	
			Blerje Aven Energy Trading				-88	
Shirje Aven Energy Trading					0			
Blerje Danske Commodities					-2,008			
Shirje Danske Commodities					2,740			
Blerje GSA				0				
Shirje GSA				0				
Blerje RENRGY				-112				
Shirje RENRGY				0				
Blerje GEN1				-1,840				
Shirje GEN1				1,900				
Blerje Tirana International Development				0				
Shirje Tirana International Development				0				
Shirje EZ-5 ENERGY				160				
Blerje NOA ENERGY				-400				
Shirje NOA ENERGY				0				
Shirje INFO Telecom				-400				
Blerje ENER TRADE				-400				
Shirje ENER TRADE				1,600				
Blerje PROINFINT CONSULTING				0				
Shirje EZ-5 ENERGY				-160				
Blerje ALBESP				-160				
Shirje OET				0				
Shirje ALPEX	73,077	54,780	47,183	175,040				
Total transaksione	476,308	460,869	334,467	1,271,644				

1. Konsumentet e kualifikuar per secilin subjekt ndryshojne cdo muaj ne varesi te kontratave te nenshkruara nga te dyja palet.
2. Shenja (-) eshte perdorur per energjine qe hyne ne rrjet (blerje + import) ndersa shenja (+) per energjine qe del nga rrjeti (shitje + eksporti).
3. Cdo vlerë e sipërshënuar është e nominuar - ne program (jo faktike me matje)

Blerje						
Prill 2024	Shoqëritë	Sasia (MWh)	EUR/MWh	Vlera	TVSH	Vlera me TVSH
	NOA Energy Trade sh.p.k.	400	53.1	21244	4248.8	25492.8
	GEN-I Tirana sh.p.k.	1840	45.2	83176	16635.2	99811.2
	Renrgy Trading Group sh.p.k.	112	42.9	4802.56	960.512	5763.072
	Danske Commodities Albania sh.p.k.	2008	48.1	96655.52	19331.104	115986.624
	Ayen Energy Trading sh.a.	88	54.4	4782.8	956.56	5739.36
	Fuente Dynamics sh.p.k. /Kosove	160	42.8	6840.8		6840.8
	Ener Trade sh.p.k	400	40.1	16040	3208	19248
	AlbEsp Trading&Consulting	160	39.5	6315.2	1263.04	7578.24
	Axpo d.o.o Beograd	432	54.8	23652	0	23652
HSE d.oo	2464	45.8	112900.8		112900.8	
Totali		8064	46.68	376409.68	46603.22	423012.90

Shitje						
Prill 2024	Shoqëritë	Sasia (MWh)	EUR/MWh	Vlera	TVSH	Vlera me TVSH
	Ener Trade sh.p.k	1,600	71.40	114,240.00	22,848.00	137,088.00
	Danske Commodities Albania sh.p.k.	2,740	65.50	179,463.20	35,892.64	215,355.84
	EZ-5 ENERGY sh.p.k	160	70.06	11,209.60	-	11,209.60
	Gen-I	1,900	71.79	136,406.00	27,281.20	163,687.20
Totali		6400	68.96	441,318.80	86,021.84	527,340.64

