

**BILANCI ELEKTROENERGJITIK 2021 (MWh)**

Prodhimi neto publik		Prodhuar nga PPE në rrjetin e OSSH			Prodhuar nga PPE në rrjetin e OST		Prodhues të pavarur			Prodhim neto vendas		
Prodhimi Neto KESH sha		Neto (Selit)	HC,Priv/Kon në Rrjetin e OSSH për FTL	FOTOVOLTAIK	HC,Priv/Kon në Rrjetin e OST për FTL	Neto Ashta	Neto Banjia	Neto Mogleca	Neto KURUM		HC Peshqesh	HC Fanga
5,343,974		27,504	877,726	40,756	951,505	295,245	258,632	424,642	406,632	99,316	236,767	8,962,699
<i>Balanca e shkëmbimëve në Interkoneksion</i>												
<i>Balanca e shkëmbimëve të brendshme</i>												
<i>Shtesa OST në Humbje+konsum vetjak</i>												
<i>Konsumuar nga Tëc Vloza</i>												
<i>Drejtime nga Procesi i Interkoneksionit</i>												
<i>Energjia në shërbime ndihmëse-sidbalanca</i>												
Energji për FSHU nga KESH sha												
3,931,629												
1,412,345												
3,931,629												
Energji e siguruar nga FTL												
Blerje Neto (Selit)	Blerje HC,Priv/Kon në Rrjetin e OSSH për FTL	Blerje FOTOVOLTAIK	Blerje HC,Priv/Kon në Rrjetin e OST për FTL	Blerje Neto Ashta	Blerje në Treg të Liberalizuar nga FTL	nga ost Tëc Ballsh	nga ost për klientet në treg të liber.					
27,504	877,726	40,756	951,505	295,245	1,131,422	719	64,916					
					3,389,793							
Balanca në interkoneksion (dhënie)												
547,896												
Energji nga KESH për FSHU		Energji nga FTL për FSHU		Energji për humbjet OSSH	Kliente të FTL në Treg të Liberalizuar	Eksport FTL	Energji në hyrje dhe dalje (transmetuar) për klientet në treg të liberalizuar e të lidhur në rrjetin e OSSH					
3,931,629		1,566,219		1,556,953	17,935	183,770	64,916					
		5,497,848					-64,916					
		Energji për FSHU										
Konsumi total i vendit												
8,414,803												

TABELA ME TE DHENA PERIODIKE (MUJORE) TE OSHEE Sh.a 2021		Janar	Shkurt	Mars	Prill	Maj	Qershor	Korrik	Gusht	Shtator	Tetor	Nentor	Dhjetor	Progresive	
<b>A</b>	<b>Energji Totale e Hyrë në OSHEE Sh.a (MWh)</b>	A=A.1+A.3-A1.7	724,554	629,962	662,183	590,810	504,970	519,576	591,485	603,872	485,288	523,606	552,840	747,790	7,136,936
A.1	Energji e transmetuar nepermjet OST per Ilogari te OSHEE Sh.a	A.1=Sum(A.1.1-A1.6)	599,793	531,361	562,967	489,782	469,536	480,507	565,502	586,951	469,914	488,002	514,080	616,323	6,374,719
A.1.1	Nga KESH -Gen nepermjet OST		410,055	354,097	425,947	306,064	300,752	396,549	457,254	310,593	173,935	188,231	181,107	427,044	3,931,629
A.1.2	Nga OST si import i OSHEE Sh.a		1,488	1,344	1,486	1,440	1,488	1,440	58,577	245,448	271,448	258,470	278,673	10,120	1,131,422
A.1.3	Energji e transmetuar per klientet 35kV (te dal ne treg te parregulluar furnizues te tjere)		4,713	4,782	5,699	5,435	5,842	6,527	6,993	6,897	4,828	4,592	4,302	4,305	64,916
A.1.4	Nga OST per Ilogari te klienteve te OSHEE Sh.a prodhuar nga HEC-et ne rrjetin e transmetimit		183,538	171,138	129,835	176,843	161,453	75,990	42,678	24,013	19,703	36,710	49,998	174,853	1,246,751
A.1.5	Nga TEC VLORA nepermjet OST		n/a	n/a	n/a	n/a	n/a	n/a	n/a	n/a	n/a	n/a	n/a	n/a	n/a
A.1.6	Nga Bistrica 1,2 nepermjet OST		n/a	n/a	n/a	n/a	n/a	n/a	n/a	n/a	n/a	n/a	n/a	n/a	n/a
A.1.7	Export OSHEE Group Sh.a		30,980	11,050	40,190	84,480	17,070	-	-	-	-	-	-	-	183,770
A.2	Energji elektrike e injektuar ne OST nga Hec-et Lokale	A.2	61,299	66,197	46,597	74,064	61,795	14,939	1,909	665	937	8,966	11,675	66,389	415,433
A.3	Energji e transmetuar direkt ne rrjetin e OSHEE Sh.a	A.3 = Sum(A.3.1, A.3.3)	124,761	129,581	110,266	141,218	119,914	56,139	25,982	16,921	15,374	35,604	38,759	131,467	945,988
A.3.1	HEC Ulez, Lanabregas		3,249	2,958	2,527	2,683	2,707	2,334	2,591	2,154	1,413	1,386	1,404	2,098	27,504
A.3.2	Impjantet Private/me Koncesion		119,778	124,135	103,961	134,826	112,533	49,068	18,548	10,179	10,207	31,195	35,741	127,557	877,727
A.3.3	Burimet e Rinovueshme Fotovoltaik (BRE)		1,734	2,488	3,779	3,708	4,674	4,737	4,844	4,588	3,754	3,024	1,615	1,812	40,756
<b>B</b>	<b>Energji Totale ne Rrjetin e Shtepndarjes (MWh)</b>	B=A+A.1.3-A2	785,853	696,159	708,781	664,873	566,764	534,516	593,394	604,537	486,226	532,572	564,515	814,179	7,552,369
<b>C</b>	<b>Humbjet Totale ne Rrjetin e Shtepndarjes (MWh)</b>	C=C.1+C.2+C.3	219,024	139,953	183,717	140,125	101,574	98,061	111,285	108,398	78,880	98,820	112,237	164,879	1,556,953
C.1	Humbje Teknikne njesite e TL (MWh)		9,713	9,094	9,360	10,648	9,398	9,847	8,130	8,658	7,091	7,222	9,534	8,644	107,340
C.2	Humbje Teknikne ne Zona (MWh)		133,183	83,159	108,467	82,462	56,007	54,131	64,751	66,257	45,205	57,510	63,547	106,650	921,330
C.3	Humbje JoTeknike ne Zona (MWh)		76,128	47,699	65,890	47,015	36,169	34,083	38,404	33,482	26,583	34,089	39,156	49,585	528,283
<b>C.1</b>	<b>Humbjet Totale ne OSHEE Sh.a (%)</b>	C.1=C/B	<b>27.87%</b>	<b>20.10%</b>	<b>25.92%</b>	<b>21.08%</b>	<b>17.92%</b>	<b>18.35%</b>	<b>18.75%</b>	<b>17.93%</b>	<b>16.22%</b>	<b>18.56%</b>	<b>19.88%</b>	<b>20.25%</b>	<b>20.62%</b>
C.1.1	Humbje Teknikne njesite e TL (%)		1.24%	1.31%	1.32%	1.60%	1.66%	1.84%	1.37%	1.43%	1.46%	1.36%	1.69%	1.06%	1.42%
C.2.1	Humbje Teknikne ne Zona (%)		17.17%	12.11%	15.52%	12.61%	10.05%	10.32%	11.07%	11.12%	9.44%	10.95%	11.46%	13.25%	12.38%
C.3.1	Humbje JoTeknike ne Zona (%)		9.69%	6.85%	9.30%	7.07%	6.38%	6.38%	6.47%	5.54%	5.47%	6.40%	6.94%	6.09%	6.99%
<b>D</b>	<b>Energjia e perdorrur ne Rrjetin e Shtepndarjes</b>	D=Sum(D.1-D.7)	<b>558,828</b>	<b>553,799</b>	<b>522,603</b>	<b>523,383</b>	<b>462,433</b>	<b>433,833</b>	<b>480,055</b>	<b>493,402</b>	<b>403,343</b>	<b>424,763</b>	<b>447,938</b>	<b>644,377</b>	<b>5,948,754</b>
D.1	Shitur Klienteve FMF (MWh)	D.1=Sum(D.1.1-D.1.2)	2,250	1,572	1,555	1,424	1,631	1,896	1,850	2,283	1,749	1,670	1,526	1,440	20,945
D.1.1	Shitur Klienteve FMF Privat (MWh)		192	18	18	13	7	64	124	541	151	143	134	129	1,534
D.1.2	Shitur Klienteve FMF JoBuxhetore (MWh)		2,158	1,554	1,537	1,411	1,624	1,831	1,727	1,741	1,598	1,527	1,392	1,310	19,411
D.2	Shitur Klienteve Private (MWh)	D.2=D.2.1+D.2.2+D.2.3	<b>132,045</b>	<b>130,668</b>	<b>133,656</b>	<b>131,218</b>	<b>128,633</b>	<b>151,025</b>	<b>179,886</b>	<b>180,009</b>	<b>143,292</b>	<b>137,749</b>	<b>140,898</b>	<b>167,066</b>	<b>1,756,143</b>
D.2.1	Shitur nga rrjeti i Transmetimit per Ilogari te OSHEE Sh.a		-	-	-	-	-	-	-	-	-	-	-	-	-
D.2.2	Shitur per nevoja te veta te OSHEE Sh.a		703	606	593	542	392	374	427	501	373	525	534	658	6,229
D.2.3	Shitur Klienteve Private (pa ate per nevoja te veta dhe Ne TL)		131,341	130,062	133,063	130,676	128,240	150,651	179,459	179,508	142,919	137,224	140,364	166,407	1,749,914
D.3	Shitur Klienteve JoBuxhetore (MWh)		25,919	24,687	27,142	26,930	26,786	28,452	31,143	33,233	28,663	29,816	29,436	32,949	<b>345,158</b>
D.4	Shitur Klienteve Buxhetore (MWh)		26,459	24,961	24,144	21,244	17,185	18,372	19,620	19,685	18,691	20,399	23,008	30,774	<b>264,542</b>
D.5	Shitur Klienteve Familjare (MWh)	D.5=D.5.1+D.5.2	306,044	300,930	283,810	263,069	220,561	212,621	238,652	250,630	205,182	221,571	237,092	341,454	<b>3,081,617</b>
D.5.1	Shitur Klienteve Familjare (MWh)		299,586	294,646	277,594	256,955	214,242	206,043	231,736	243,682	198,244	214,554	230,017	333,867	3,001,166
D.5.2	Shitur Klienteve Familjare per Ambientet e Perbasketa		6,458	6,285	6,216	6,114	6,319	6,578	6,916	6,947	6,938	7,017	7,076	7,587	80,451
D.6	Energji elektrike e injektuar ne OST nga Hec-et Lokale	D.6=A.2	61,299	66,197	46,597	74,064	61,795	14,939	1,909	665	937	8,966	11,675	66,389	415,433
D.7	Energji elektrike e perdorrur nga klientet ne treg te parregulluar	D.7	4,713	4,782	5,699	5,435	5,842	6,527	6,993	6,897	4,828	4,592	4,302	4,305	64,916
<b>E</b>	<b>Faturuar muaji Parardhes (000/leke)</b>		<b>6,641,071</b>	<b>6,400,370</b>	<b>6,245,453</b>	<b>6,158,373</b>	<b>5,817,548</b>	<b>5,190,837</b>	<b>5,548,298</b>	<b>6,377,974</b>	<b>6,554,952</b>	<b>5,401,032</b>	<b>5,544,032</b>	<b>5,794,416</b>	<b>71,674,355</b>
<b>F</b>	<b>Arketimet e muajit aktual (000/leke)</b>	G=F.1+F.2+F.3+F.4	<b>5,737,532</b>	<b>5,691,538</b>	<b>6,378,961</b>	<b>5,604,601</b>	<b>5,886,818</b>	<b>5,746,417</b>	<b>5,377,882</b>	<b>6,001,630</b>	<b>5,945,864</b>	<b>6,192,739</b>	<b>5,374,118</b>	<b>5,883,170</b>	<b>69,821,270</b>
F.1	Arketuar per faturat korrente te vitit aktual		4,135,705	3,770,254	4,067,618	3,860,196	3,707,556	3,268,937	3,525,299	3,847,865	3,788,897	3,312,001	3,356,121	3,775,325	44,415,776
F.3	Arketuar per faturat e tjera te vitit aktual		15,512	12,369	1,622,906	1,442,620	1,850,582	2,148,521	1,527,971	1,800,534	1,898,864	2,427,825	1,724,632	1,807,861	18,280,198
F.4	Arketuar per faturat e tjera te viteve te kaluara		1,586,315	1,908,915	688,438	301,785	328,680	328,599	324,612	353,231	258,102	452,913	293,364	299,984	7,125,296
<b>F.1</b>	<b>Arketimet e muajit aktual (%)</b>	F.1=F/E	<b>86.4%</b>	<b>88.9%</b>	<b>102.1%</b>	<b>91.0%</b>	<b>101.2%</b>	<b>110.7%</b>	<b>96.9%</b>	<b>94.1%</b>	<b>90.7%</b>	<b>114.7%</b>	<b>96.9%</b>	<b>101.5%</b>	<b>97.4%</b>
F.1.1	Arketuar per faturat korrente te vitit aktual (%)	F.1.1=F.1/E	62.3%	58.9%	65.1%	62.7%	63.7%	63.0%	63.5%	60.3%	57.8%	61.3%	60.5%	65.2%	62.0%
F.1.3	Arketuar per faturat e tjera te vitit aktual (%)	F.1.3=F.3/E	0.2%	0.2%	26.0%	23.4%	31.8%	41.4%	27.5%	28.2%	29.0%	45.0%	31.1%	31.2%	25.5%
F.1.4	Arketuar per faturat e tjera te viteve te kaluara (%)	F.1.4=F.4/E	23.9%	29.8%	11.0%	4.9%	5.6%	6.3%	5.9%	5.5%	3.9%	8.4%	5.3%	5.2%	9.9%
<b>G</b>	<b>Faturuar muaji Raportues (000/leke)</b>		<b>6,400,370</b>	<b>6,245,453</b>	<b>6,158,373</b>	<b>5,817,548</b>	<b>5,190,837</b>	<b>5,548,298</b>	<b>6,377,974</b>	<b>6,554,952</b>	<b>5,401,032</b>	<b>5,544,032</b>	<b>5,794,416</b>	<b>7,572,744</b>	<b>72,606,028</b>
<b>1</b>	<b>Nr. Konsumatoreve gjithsej (Nr.)</b>		1,266,069	1,266,734	1,268,062	1,270,888	1,273,899	1,275,201	1,277,741	1,285,188	1,274,559	1,276,585	1,278,259	1,279,460	1,278,259
<b>2</b>	<b>Fatura te emetuara me lexim konsumi (Nr.)</b>		976,680	958,732	941,330	957,668	970,818	991,655	1,006,358	1,028,187	1,024,058	1,022,100	1,008,414	1,014,176	11,900,176
<b>3</b>	<b>Sasia e energjise se faturuar me lexim konsumi (MWh)</b>		-	-	-	-	-	-	-	-	-	-	-	-	-
<b>4</b>	<b>Fatura te emetuara me lexim "0" (Nr.)</b>		289,389	282,144	326,732	313,220	303,081	283,546	271,383	257,001	262,152	267,819	284,865	280,068	3,421,400
<b>5</b>	<b>Nr.Faturave te emetuara pa lexim (energji e pa matur) (Nr.)</b>		-	-	-	-	-	-	-	-	-	-	-	-	-
<b>6</b>	<b>Sasia e energjise se faturuar si energji e pamatur (MWh)</b>		-	-	-	-	-	-	-	-	-	-	-	-	-
<b>7</b>	<b>Nr.Faturave te emetuara pa lexim (dem ekonomik) (Nr.)</b>		794	303	102	197	355	342	244	360	238	603	282	581	4,401
<b>8</b>	<b>Sasia e faturuar si dem ekonomik (MWh)</b>		7,189	1,563	1,619	391	1,657	1,773	1,019	1,708	1,075	6,089	1,697	2,975	28,756
<b>9</b>	<b>Nr.Faturave per te cilat eshte arketuar kamat vonese (Nr.)</b>		12,717	320,816	391,076	323,599	404,245	416,309	458,982	526,159	392,009	447,603	398,290	426,854	4,518,659
<b>10</b>	<b>Vlera e Kamat vonesave te arketuara (000/leke)</b>		1,343	48,333	84,054	54,180	78,083	76,947	100,067	98,694	75,675	70,075	94,123	87,632	869,207

<b>BILANCI ENERJITIK I FTL sha, FSHU SHA DHE OSSH sha PER Vitin 2021 (MWh)</b>		
1	ENERGJI TOTALE E HYRE NE RRJETIN E OSSH-se	7,136,936
2	Energji e shitur nga KESH sha per FSHU sha	3,931,629
3	<b>ENERGJI NE HYRJE E BLERE NGA FTL (OSHEE sha)</b>	<b>3,324,877</b>
3.1	Blere nga Prodhimi i PPE në rrjetin e OSSH	945,986
3.2	Blere nga Prodhimi i PPE në rrjetin e OST	1,246,750
3.3	Blere ne Treg të Liberalizuar nga FTL sha	1,131,422
3.4	Transmetim nga N/St Tec Ballshi	719
4	<b>ENERGJI NE DALJE E SHITUR NGA FTL (OSHEE sha)</b>	<b>3,324,877</b>
4.1	Energji nga FTL per FSHU	1,566,219
4.2	Energji nga FTL për humbjet OSSH	1,556,953
4.4	Energji e shitur nga FTL ne treg te liberalizuar	17,935
4.5	Eksport i FTL	183,770
5	<b>ENERGJI NE HYRJE PER FSHU (OSHEE sha)</b>	<b>5,497,848</b>
5.1	Energji Faktike nga KESH sha per FSHU sha	3,931,629
5.2	Energji nga FTL per FSHU	1,566,219
6	<b>ENERGJI NE DALJE PER FSHU (OSHEE sha)</b>	<b>5,497,880</b>
6.1	Shitur Klienteve te Sherbimit Universal	5,447,460
6.11	Shitur klienteve Familiare	<b>3,081,617</b>
6.12	Shitur klienteve Private	<b>1,756,143</b>
6.13	Shitur klienteve Buxhetore	<b>264,542</b>
6.14	Shitur klienteve JoBuxhetore	<b>345,158</b>
6.2	Shitur Klienteve të mundesisë së Fundit	20,945
6.21	Shitur Klienteve FMF Privat (MWh)	1,534
6.22	Shitur Klienteve FMF JoBuxhetore(MWh)	19,411
	Shitur si dem Ekonomik	28,756
6.23	Shitur energjia e marre nga Tec Ballshi	719
7	<b>ENERGJI QE KALON NE RRJETIN E OSSH-se</b>	<b>7,563,529</b>
7.1	Energji nga FTL për humbjet OSSH	1,556,953
7.2	Energji Faktike nga KESH sha per FSHU sha	3,931,629
7.3	Energji nga FTL per FSHU	1,566,219
7.4	Energjia e ngitur ne rrjetin e transmetimit nga centralet e lidhura ne rrjetin e OSSH	415,433
7.5	Energji e furnizuar nga FTL për Kliente ne treg të liberalizuar (ne rrjetin e OSSH)	17,935
7.6	Energji vetem per tu transmetuar tek klientet ne treg te liberalizuar (ne rrjetin e OSSH)	64,916
7.7	Klienteve të FTL ne treg te liberalizuar	10,444
8	<b>Humbje totale ne rrjetin e OSSH-se ( %)</b>	<b>20.6</b>

OST sha	Njësia e Matjes	Janar	Shkurt	Mars	Prill	Maj	Qershor	Korrik	Gusht	Shtator	Tetor	Nëntor	Dhjetor	Shuma 2021 [MWh]
	MWh													
Prodhimi nga KESH GEN në Rrjetin e Transmetimit	1	648,222	651,567	590,022	521,278	553,158	482,334	492,645	355,192	199,273	201,067	195,849	453,367	5,343,974
Prodhimi nga HEC/HPP e vogla në Rrjetin e Transmetimit	2	61,299	66,197	46,597	74,064	61,795	14,939	1,909	665	937	8,966	11,675	66,389	415,433
Prodhimi nga PPE/IPP e mëdha në Rrjetin e Transmetimit	3	147,262	137,659	98,116	147,878	130,049	51,266	18,998	7,102	8,576	24,808	36,489	143,303	951,506
Prodhimi nga HEC Peshqesh	4	18,063	16,059	12,828	15,694	9,806	3,185	1,803	945	222	52	4,209	16,451	99,317
Prodhimi nga HEC Banja	5	37,952	43,734	31,179	27,835	23,432	11,455	14,200	10,858	6,732	5,551	9,387	36,317	258,632
Prodhimi nga HEC FANG	6	49,111	39,787	28,899	25,490	17,871	13,227	8,029	6,490	11,050	7,798	5,043	23,973	236,767
Prodhimi nga HEC Moglicë	7	35,215	77,681	60,372	41,383	49,480	13,893	28,487	21,703	21,076	9,270	20,517	45,564	424,643
Prodhimi nga nga HEC Ashta	8	36,275	33,478	31,720	28,965	31,404	24,725	23,679	16,911	11,127	11,902	13,509	31,550	295,245
Prodhimi nga KURUM (Ulez-Shkopet&Bistrica1,2)	9	53,818	51,870	48,597	49,167	44,666	24,747	21,514	13,833	12,524	14,891	18,945	52,061	406,631
Eksporti (-) nga Linjat e Interkonjeksionit	D	367,668	479,008	299,881	334,456	390,409	199,095	155,784	83,482	84,173	79,964	51,790	274,733	2,800,443
Importi (+) nga Linjat e Interkonjeksionit	R	42,302	14,791	42,120	45,298	38,587	144,354	225,260	357,410	392,209	397,631	367,501	185,084	2,252,548
Balanca (Total Interkonjeksioni)	10=(R-D)	325,365	464,216	257,761	289,159	351,821	54,741	(69,475)	(273,928)	(308,036)	(317,667)	(315,711)	89,648	(547,896)
Energjia Totale në Marrje	1=(1+2+3+4+5+6+7+8+9+R	1,129,520	1,132,825	990,450	977,050	960,248	784,124	836,524	791,109	663,727	681,936	683,125	1,054,060	10,684,696
Humbjet në Rrjetin e Transmetimit (përfshirë Nevojat Vetjake)	12	26,474	27,612	19,971	22,832	22,959	14,902	16,499	16,965	11,405	11,556	12,843	23,899	227,918
Humbjet në Rrjetin e Transmetimit %	13=12/11	2.34	2.44	2.02	2.34	2.39	1.90	1.97231389	2.14	1.72	1.69	1.88	2.27	2.13
Energjia Totale në Dhënie	14=(11-12)	1,103,046	1,105,213	970,478	954,218	937,288	769,222	820,025	774,144	652,322	670,380	670,281	1,030,160	10,456,777
<i>Transmetuar në Linjat e Interkonjeksionit</i>	15=D	367,668	479,008	299,881	334,456	390,409	199,095	155,784	83,482	84,173	79,964	51,790	274,733	2,800,443
<i>Transmetuar tek Klientët e Kualifikuar</i>		74,214	59,565	72,016	96,044	99,973	91,699	96,777	102,993	97,244	93,386	92,674	72,649	1,049,234
<i>EL220-L220KURUM/337</i>		31,422	24,419	13,837	33,251	35,512	33,794	33,860	31,829	30,991	27,996	29,727	12,082	338,718
<i>F.Arrez-T3/653</i>		1,166	957	1,432	881	1,158	711	1,148	1,337	652	33	-	-	9,475
<i>Titan T1,T2</i>		8,210	4,226	11,668	11,488	11,470	9,223	7,117	10,749	8,838	10,542	10,891	4,949	109,372
<i>FUSHE KRUIJE 220kV-T2/058</i>		8,497	2,516	10,007	12,804	13,635	11,522	12,046	12,141	10,588	7,833	6,291	9,894	117,773
<i>N/ST 220/6.3Colacent-T1/336</i>		539	902	1,312	1,472	1,402	1,344	1,513	1,554	1,599	1,022	1,276	711	14,647
<i>N/ST i GSA EL 110kV-T1/694</i>		9,128	8,183	9,056	8,709	9,029	7,922	5,496	-	-	-	-	-	57,522
<i>N/ST i GSA EL 110kV-T2/960</i>		-	-	-	-	-	-	6,576	16,424	16,713	17,578	17,054	17,330	91,675
<i>N/ST i AES EL 110kV-T1/690</i>		7,374	6,447	7,060	7,050	7,370	6,874	7,426	7,415	7,114	7,398	7,111	7,079	85,719
<i>N/ST i AES EL 110kV-T2/692</i>		79	4,883	7,347	7,391	7,604	7,287	7,825	7,689	7,484	7,613	7,297	7,353	79,854
<i>HEC Moglice T1,T2,T3</i>		5	14	1	4	0.38	22	14	0	24	61	1	2	149
<i>HEC Peshqesh-T1/633</i>		3	2	4	0.38	4	29	38	34	33	48	38	3	236
<i>Lajthiza T1/742</i>		367	368	406	408	444	459	515	575	512	488	458	498	5,498
<i>HEC Ashta 1-T1,HEC Ashta2-T1,</i>		-	-	-	0.15	-	-	-	0.01	0	-	0	-	0
<i>HEC Banje T1,T2</i>		6	2	11	13	16	25	20	24	21	24	19	7	188
<i>HEC Fang-T1,T2,</i>		1	8	25	25	34	26	32	19	13	24	24	30	262
<i>Gjenerim KURUM</i>		3	1	1	0.42	-	14	28	34	31	34	37	1	186
<i>TEC Ballsh-T1/598</i>		73	62	68	62	56	51	52	53	54	61	61	67	719
<i>FERRO KROM-F1,F2,F3,F4</i>		7,413	6,638	9,847	12,549	12,295	12,447	13,122	13,168	12,629	12,692	12,449	12,710	137,961
<i>Transmetuar në rrjetin e Shpërndarjes</i>		661,092	566,578	598,514	523,656	446,851	478,376	567,411	587,616	470,852	496,968	525,755	682,712	6,606,381
<i>Transmetuar në rrjetin e Shpërndarjes 110 kV</i>		562,636	486,256	520,646	458,142	389,382	415,733	495,814	519,039	411,856	433,282	458,549	593,455	5,744,788
<i>Transmetuar në rrjetin e Shpërndarjes 35 kV</i>		50,014	38,067	38,702	33,459	27,996	31,426	37,908	38,387	32,825	36,075	37,143	43,254	445,255
<i>Transmetuar në rrjetin e Shpërndarjes 6, 10, 20 kV</i>		48,443	42,256	39,167	32,054	29,473	31,217	33,689	30,191	26,170	27,612	30,064	46,003	416,338

**TË DHËNA MBI TRANSMETIMIN E ENERGJISË ELEKTRIKE NGA OPERATORI I SISTEMIT TE TRANSMETIMIT NË SHQIPËRI PËR VITIN 2021 (MWh)**

	Janar	Shkurt	Mars	Prill	Maj	Qershor	Korrik	Gusht	Shtator	Tetor	Nëntor	Dhjetor	2021		
HYRJE	Dhene nga H/C e KESH ne rrjetin e Transmetimit	648,222	651,567	590,022	521,278	553,158	482,334	492,645	355,192	199,273	201,067	195,849	453,367	<b>5,343,974</b>	10,684,696
	Dhene nga H/C e me perparesi ne rrjetin e Transmetimit	147,262	137,659	98,116	147,878	130,049	51,266	18,998	7,102	8,576	24,808	36,489	143,303	<b>951,506</b>	
	Energji nga Hec-et Lokale levruar ne Rrjetin e Transmetimit (me ngritje)	61,299	66,197	46,597	74,064	61,795	14,939	1,909	665	937	8,966	11,675	66,389	<b>415,433</b>	
	Gjenerim KURUM (prodhues i pavarur)	53,818	51,870	48,597	49,167	44,666	24,747	21,514	13,833	12,524	14,891	18,945	52,061	<b>406,631</b>	
	HEC ASHTA (prodhues i pavarur Kontr.me OSHEE)	36,275	33,478	31,720	28,965	31,404	24,725	23,679	16,911	11,127	11,902	13,509	31,550	<b>295,245</b>	
	HEC BANJE (prodhues i pavarur)	37,952	43,734	31,179	27,835	23,432	11,455	14,200	10,858	6,732	5,551	9,387	36,317	<b>258,632</b>	
	HEC MOGLICE (prodhues i pavarur)	35,215	77,681	60,372	41,383	49,480	13,893	28,487	21,703	21,076	9,270	20,517	45,564	<b>424,643</b>	
	HEC PESHQESH-T1/637 (prodhues i pavarur)	18,063	16,059	12,828	15,694	9,806	3,185	1,803	945	222	52	4,209	16,451	<b>99,317</b>	
	HEC FANGU (prodhues i pavarur)	49,111	39,787	28,899	25,490	17,871	13,227	8,029	6,490	11,050	7,798	5,043	23,973	<b>236,767</b>	
Importi(Hyre) nga Linjat e Interkonjeksionit	42,302	14,791	42,120	45,298	38,587	144,354	225,260	357,410	392,209	397,631	367,501	185,084	<b>2,252,548</b>		
DALJE	Humbjet ne Transmetim	26,474	27,612	19,971	22,832	22,959	14,902	16,499	16,965	11,405	11,556	12,843	23,899	<b>227,918</b>	10,684,696
	Transmetuar ne Rrjetin e Shpermdarjes	661,092	566,578	598,514	523,656	446,851	478,376	567,411	587,616	470,852	496,968	525,755	682,712	<b>6,606,381</b>	
	Klientene treg te hapur (TL) (+Tec Ballsh)	74,286	59,627	72,083	96,106	100,029	91,751	96,829	103,046	97,297	93,447	92,736	72,716	<b>1,049,953</b>	
	Eksporti (Dale) nga Linjat e Interkonjeksionit	367,668	479,008	299,881	334,456	390,409	199,095	155,784	83,482	84,173	79,964	51,790	274,733	<b>2,800,443</b>	
Humbjet ne Transmetim	26,474	27,612	19,971	22,832	22,959	14,902	16,499	16,965	11,405	11,556	12,843	23,899	<b>227,918</b>		
Humbjet ne Transmetim ne %	<b>2.34</b>	<b>2.44</b>	<b>2.02</b>	<b>2.34</b>	<b>2.39</b>	<b>1.90</b>	<b>1.97</b>	<b>2.14</b>	<b>1.72</b>	<b>1.69</b>	<b>1.88</b>	<b>2.27</b>	<b>2.13</b>		

PARAQITJA SKEMATIKE E FLUKSEVE TE ENERGIJE NE SISTEMIN ELEKTRO-ENERGJITIK SHQIPETAR VITI 2021 (MWh)

Energji e lëvruar nga H/C-et e KESH sha	Energji e lëvruar nga prodhuesit me përparësi lidhur ne TL (kontrate me OSHEE)	Energji e lëvruar nga H/C ASHTA lidhur ne TL (kontrate me OSHEE)	Energji e lëvruar nga H/C et Priv/konc lidhur ne TL (Prodhues ne treg te hapur)					Energji ne hyrje nga Interkoneksioni
5,343,974	951,506	295,245	Kurum	Banje	Moglice	Fangu	Peshqesh	2,252,548
			406,631	258,632	424,643	236,767	99,317	

10,684,696 — ENERGJI HYRESE NE RRJETIN E TRANSMETIMIT

Energji me ngritje nga Sistemi Shpërndarjes									
415,433									
Neto (Selit)	HC.Priv/Kon + CENTR Fotovoltaikë ne Rrjetin e OSHEE	Humbje + Konsum ne Transmetim		Konsumi i klienteve në treg të hapur te lidhur ne Transmetim		Energji ne dalje nga Interkoneksioni			
27,504	918,482	227,918		1,049,953		2,800,443			
945,986				719 N/St Tec Ballshi perfshire					

Energji e tranmetuar direkt ne rrjetin e OSSH	Energji e tranmetuar ne rrjetin e Shperndarjes nga OST
530,553	6,606,382

7,136,935 | ENERGJI HYRESE NE RRJETIN E SHPERNDARJES

7,136,935 | ENERGJI E KONSUMUAR NE RRJETIN E SHPERNDARJES

Konsumuar Klientet lidhur në OST(+Ballsh)	1,049,953	1,277,871	ENERGJI E KONSUMUAR NE RRJETIN E TRANSMETIMIT
Konsumuar nga OST (humbje +nevoja vetiake)	227,918		
	1,277,871		

8,414,806 | ENERGJI E KONSUMUAR NE SHQIPERI

LEGJENDA	
FSHU	FURNIZUES I SHËRBIMIT UNIVERSAL
FMF	FURNIZUES I MUNDËSISË SË FUNDIT

Burimi OST ,OSHEE sha

<b>PRODHIMI NETO NE SHQIPERI</b>	Janar	Shkurt	Mars	Prill	Maj	Qershor	Korrik	Gusht	Shtator	Tetor	Nëntor	Dhjetor	2021
Prodhimi Neto KESH sha.	648,222	651,567	590,022	521,278	553,158	482,334	492,645	355,192	199,273	201,067	195,849	453,367	5,343,974
Hec-et Private dhe Konc. (Rrjeti Shperndarjes)	119,778	124,135	103,961	134,826	112,533	49,065	18,549	10,179	10,206	31,195	35,741	127,557	877,726
Hec-et Private dhe Konc. (Rrjeti Transmetimit)	147,262	137,659	98,116	147,878	130,049	51,266	18,998	7,102	8,574	24,808	36,489	143,303	951,505
HEC Ashta	36,275	33,478	31,720	28,965	31,404	24,725	23,679	16,911	11,127	11,902	13,509	31,550	295,245
Prodhimi Neto Hec Lanabregas	3,249	2,958	2,527	2,683	2,707	2,334	2,591	2,154	1,413	1,386	1,404	2,098	27,504
Prodhimi Neto (Hec Ulez,Shkopet,Bistrica 1,2)	53,818	51,870	48,597	49,167	44,666	24,747	21,514	13,833	12,524	14,891	18,945	52,061	406,631
Prodhimi Hec Peshqesh	18,063	16,059	12,828	15,694	9,806	3,185	1,803	945	222	52	4,209	16,451	99,317
Prodhimi Hec Fangu	49,111	39,787	28,899	25,490	17,871	13,227	8,029	6,490	11,050	7,798	5,043	23,973	236,767
Prodhimi Hec Banja	37,952	43,734	31,179	27,835	23,432	11,455	14,200	10,858	6,732	5,551	9,387	36,317	258,632
Prodhimi Hec Moghica	35,215	77,681	60,372	41,383	49,480	13,893	28,487	21,703	21,076	9,270	20,517	45,564	424,643
Prodhimi i Centraleve Fotovoltaike	1,734	2,488	3,779	3,708	4,674	4,737	4,844	4,588	3,754	3,024	1,615	1,812	40,756
<b>ENERGJIA NETO E PRODHUAR NE SHQIPERI</b>	<b>1,150,680</b>	<b>1,181,417</b>	<b>1,011,999</b>	<b>998,906</b>	<b>979,779</b>	<b>680,967</b>	<b>635,339</b>	<b>449,955</b>	<b>285,953</b>	<b>310,942</b>	<b>342,708</b>	<b>934,054</b>	<b>8,962,700</b>

<b>ENERGJI NGA INTERKONEKSIONI</b>	Janar	Shkurt	Mars	Prill	Maj	Qershor	Korrik	Gusht	Shtator	Tetor	Nëntor	Dhjetor	2021
Energji ne dhenie nga Interkoneksioni	367,668	479,008	299,881	334,456	390,409	199,095	155,784	83,482	84,173	79,964	51,790	274,733	2,800,443
Energji ne marrje nga Interkoneksioni	42,302	14,791	42,120	45,298	38,587	144,354	225,260	357,410	392,209	397,631	367,501	185,084	2,252,548
Ballanca Hyrje/Dalje nga Interkoneksioni	325,365	464,216	257,761	289,159	351,821	54,741	(69,475)	(273,928)	(308,036)	(317,667)	(315,711)	89,648	547,896

<b>KONSUMI I ENERGJISE NE SHQIPERI</b>	2021
Konsumi i klientëve Tarifore	5,447,460
Konsumi i klientëve të furnizuar si FMF	20,945
Shitur klienteve si dem ekonomik	28,756
Konsumi i Klientëve që përdorin rrjetin për energjine e blerë ne treg të liberalizuar	64,916
Energji për Klientet ne treg të liberalizuar lidhur në OSSH me furnizues FTL	17,935
Konsumi për mbulimin e humbjeve	1,556,953
Konsumuar nga klientet e lidhur në Tec Ballsh	719
Konsumuar nga Klientet e lidhur në OST	1,049,234
Konsumuar nga OST (humbje +nevoja vetiake)	227,918
<b>KONSUMI TOTAL 2021</b>	<b>8,414,836</b>





Hec "Pobreg" me fuqi 12,3 MW	12.300	"Energy Plus" shpk	35kV	5,239	6,440	5,461	7,214	6,679	3,948	970	92	495	1,270	1,270	3,992	43,070
Hec "Vlushe" me fuqi 14,2 MW	14.200	"Hec Vlushe" shpk	35kV	9,362	6,782	4,412	6,570	4,602	1,008	135	0	65	2,059	2,111	7,502	44,607
Hec "Belesova 1" me fuqi 0,150 MW	0.150	"Korkis 2009" shpk	6kV	52	63	35	45	16	-	0	0	-	-	-	45	255
Hec "Faqeqiu 1,2" me fuqi (3 MW; 3,4 MW)	6.400	"HP OSTROVICA" shpk	35kV	2,872	2,199	1,378	3,113	3,003	768	167	0	-	1,035	832	2,734	18,101
Hec "Shemri" me fuqi 1 MW	1.000	"Eradit Energjitik" shpk	10	566	539	337	663	351	-	0	0	-	-	85	467	3,008
Hec "Mgulle" me fuqi 0,28 MW	0.280		10kV	294	273	270	294	251	9	0	0	24	121	58	278	1,872
Hec "Kryezi 1" me fuqi 0,6 Mw	0.600	"Bekim Energjitik" shpk	10kV	731	625	440	699	254	-	0	0	39	67	136	697	3,687
Hec "Selshte" me fuqi 2 MW	2.000	"Selshte" shpk	35kV	996	727	817	1,219	1,013	395	101	66	97	93	255	1,060	6,749
Hec "Carshove" me fuqi 1,5 Mw	1.500		10kV	701	740	555	372	180	73	4	0	-	253	110	685	3,672
Hec "Ura e Dashit" me fuqi 1,2MW	1.200	"ERMA MP" shpk	10kV	2,285	2,092	1,649	1,339	599	190	11	0	3	529	262	1,467	10,427
Hec "Gizavesh" me fuqi 0,5 MW	0.500	"Dosku Energy" shpk	10kV	296	316	344	379	306	207	0	0	42	186	242	344	2,663
Hec "Koka 1" me fuqi 3,2 MW	3.200	"Snow Energy" shpk	35kV	665	540	738	1,211	1,605	266	219	184	40	71	171	661	6,371
Hec "Stravaj" me fuqi 3,6 MW	3.600	"Stravaj Energji" shpk	35kV	2,052	2,224	1,524	2,115	1,416	504	152	0	49	232	500	1,817	12,585
Hec "Picar 1" me fuqi 0,2 MW	0.200	"Peshku Picar 1" shpk	6kV	73	112	117	77	49	31	21	3	-	-	-	78	562
Hec "Vertop" me fuqi 1,52 Mw	1.520	"Hydro Salitlari Energy" shpk	35kV	546	586	459	460	336	102	0	0	-	-	-	394	2,883
Hec "Martanesh" me fuqi 10,5 MW	10.500	"Albanian Power" shpk	35kV	2,255	2,425	2,681	3,108	2,978	726	216	75	197	644	667	2,626	18,596
Hec "Verba 1,2" me fuqi (2 MW, 3 MW)	5.000	"Hydro power Plant Of Korea" shpk	35kV	1,090	787	596	1,342	2,712	937	318	150	135	661	478	758	9,963
Hec "Pterra" me fuqi 1,08 MW	1.080	"Hydro Borshi" shpk	35kV	1,236	1,211	1,230	1,071	894	733	658	520	450	452	490	1,151	10,096
Hec "Ostren i Vogel" me fuqi 0,32 MW	0.320	"Lu & Co Eco Energy" shpk	10kV	58	103	108	118	117	94	70	57	50	42	33	72	922
Hec "Kozel" me fuqi 0,5 MW	0.500		10kV	187	173	123	173	117	-	0	0	-	-	-	249	1,023
Hec "Helmess 1" me fuqi 0,8 MW	0.800	"E.T.H.H." shpk	10kV	374	460	267	431	217	41	0	0	-	41	-	413	2,245
Hec "Helmess 2" me fuqi 0,5, MW	0.500		10kV	205	258	146	181	130	22	0	0	-	-	-	249	1,192
Hec "Qafzeze" me fuqi 0,4 MW	0.400	"Caushi Energji" shpk	10kV	500	524	492	515	374	117	34	0	-	173	82	539	3,350
Hec "Trebisht" me fuqi 1,775 MW	1.775	"SA G.L.E.Kompani" shpk	10kV	779	869	433	762	596	1	0	0	-	-	-	682	4,121
Hec "Mollaj" me fuqi 0,6 MW	0.600	"Energji Xhaci" shpk	10kV	145	149	177	176	109	59	0	0	-	-	-	184	998
Hec "Tucep" me fuqi 0,4 MW	0.400	"Tucep" shpk	10kV	239	258	275	283	298	276	233	210	195	211	188	249	2,917
Hec "Treska4" me fuqi 3,6 MW	3.600		35kV	1,352	1,554	1,362	1,218	798	487	98	130	174	381	350	1,819	9,723
Hec "Treska3" me fuqi 0,3 MW	0.300	"Hec-Treske" shpk	35kV	181	213	186	207	104	55	29	21	15	56	46	209	1,322
Hec "Treska 2F" 5 me fuqi 0,62 MW	0.620		35kV	414	446	343	351	233	119	62	32	41	90	77	331	2,540
Hec "Sotirel & 2" me fuqi 2,2 MW	2.200	"Hydro Energy Sotire" shpk	35kV	887	888	674	808	1,112	760	359	45	-	17	73	903	6,527
Hec "Shutine" me fuqi 2,4 MW	2.400	"Shutina energji" shpk	10kV	747	578	463	612	267	16	0	0	-	121	210	666	3,700
Hec "Cekrez 1,2" me fuqi (0,23 MW; 0,43 MW)	0.660	"Zali Herr Energji 2011" shpk	6kV	351	339	410	402	388	347	353	350	336	351	338	364	4,329
Hec "Qarr" me fuqi 1 MW	1.000	"Hec Qarr & Kaltan" shpk	35kV	868	855	553	482	410	202	109	125	83	307	192	853	5,039
Hec "Bisak" me fuqi 1,3 MW	1.300	"Bardhjana" shpk	6kV	708	665	483	632	568	117	8	0	-	-	-	574	3,756
Hec "Shales" me fuqi 1,08 MW	1.080	"Gjoka Konstruksion Energji" shpk	35kV	-	-	-	-	-	-	0	0	-	-	-	-	-
Hec "Strelec" me fuqi 1,174 MW	1.174		35kV	890	1,018	674	975	471	111	385	0	1	131	122	-	4,778
Hec "Shpelle" me fuqi 400 kW	0.400	"Sarolli" sh.p.k	10kV	144	205	149	298	245	88	22	20	9	36	56	166	1,437
Hec "Treska 1" me fuqi 130 kW	0.130	Star NRG sh.p.k	10kV	-	-	-	-	-	-	0	0	-	-	-	-	-
Hec "Bicaj" me fuqi 3,1 MW	3.100	"EN-KUP" sh.p.k	10kV	-	-	-	-	-	-	0	0	-	-	-	-	-
Hec "Leskovik 1" me fuqi 1072 kW	1.072	"Maksi Elektrik" sh.p.k	10kV	44	44	50	49	48	31	8	0	-	32	17	44	367
Hec "Leskovik 2" me fuqi 1100 kW	1.100		10kV	57	55	62	62	61	46	28	0	-	40	25	54	490
Hec "Orenje" me fuqi 875 kW	0.875	"Juana" sh.p.k	10kV	211	281	258	211	176	80	0	0	-	-	-	192	1,409
Hec "Tamarë" me fuqi 750 kW	0.750	"WTS Energji" shpk	10kV	-	-	-	-	-	-	0	0	-	-	-	-	-
Hec "Bene" me fuqi 1000 kW	1.000	"Marjakaj" shpk	6kV	198	182	191	193	186	-	0	0	-	103	130	190	1,373
Hec "Vithkuq" me fuqi 2,715 MW	2.715	"Favina 1" shpk	35/10kV	1,562	1,350	1,386	1,461	951	454	132	61	65	622	600	1,522	10,168
Hec "Selec" me fuqi 1600 kW	1.600	"Selca Energji" shpk	10kV	549	539	624	694	710	679	195	0	-	85	307	462	4,843
Hec "Kumbull-Merkurth" me fuqi 0,83 MW	0.830	"DN & NAT Energy" shpk	6kV	257	206	99	275	550	167	0	0	-	50	67	253	1,924
Hec "Sasaj" me fuqi 8,6 MW	8.600	"Energjo - Sas" shpk	35kV	3,317	3,239	3,437	2,978	2,349	1,261	707	360	651	2,039	2,219	3,177	25,735
Hec "Tervol" me fuqi 10,6 MW	10.600	"Hec i Tervoliti" shpk	35kV	4,872	5,266	4,433	6,587	3,236	1,317	441	178	272	968	1,451	5,519	34,539
Hec "Radove" me fuqi 2,5 MW	2.500	"MTC Energy" shpk	10kV	1,783	1,725	1,348	953	572	315	225	150	163	635	313	1,898	10,078
Hec "Gurshpat 1" me fuqi 0,84 MW.	0.840	"Gurshpat Energy" shpk	10kV	486	705	543	661	540	240	53	0	81	76	149	653	4,188
Hec "Gurshpat 2" me fuqi 0,83 MW	0.830		10kV	687	807	647	526	586	241	52	0	62	123	83	471	4,285
Hec "Bistrica 3" me fuqi 1,57 MW.	1.570	"Bistrica 3 Energy" shpk	6kV	754	961	885	879	672	657	657	582	493	709	748	1,065	9,061
Hec "Hurdhas 1" me fuqi 1,71 MW.	1.710	"Komp Energji" shpk	6kV	1,977	1,593	1,270	1,334	692	195	0	0	-	20	140	1,497	8,718
Hec "Perrollaj" me fuqi 0,5 MW	0.500	"Fatum" shpk	10kV	229	211	107	141	25	20	0	0	3	-	28	214	977
Hec "Koxheraj" me fuqi 0,62 MW	0.620	"Koxherri Energji" shpk	10kV	293	248	231	280	160	77	31	22	37	85	83	277	1,824
Hec "Kacni" me fuqi 3,87 MW	3.870	"Kisi-Bio-Energji" shpk	20kV	870	905	313	860	1,607	774	0	0	-	116	222	757	6,424
Hec "Lena 1" me fuqi 1,95 Mw.,	1.950		35kV	-	-	-	-	-	-	-	-	-	-	-	-	-
Hec "Lena 2" me fuqi 2,3 MW	2.300	"Gamma Energy" shpk	35kV	1,102	1,036	854	1,555	1,518	53	-	-	-	243	342	1,380	8,082
Hec "Lena 2A" me fuqi 0,25 MW	0.250		35kV	-	-	-	-	-	-	-	-	-	-	-	-	-
Hec "Driza" me fuqi 3,408 MW	3.408	"Mesopotam Energy" shpk	35kV	899	894	416	300	225	153	108	65	18	94	81	779	4,033
Hec Strelca 1,2,3 (1,504 MW, 0,325 MW, 3,52 MW)	5.349	"Strelca Energy" shpk	35kV	1,699	1,629	1,210	2,307	3,056	1,014	0	177	227	945	697	1,350	14,312
Hec "Ujanik 2" me fuqi 2,5 MW	2.500	"HP Ujaniku Energy" shpk	35kV	1,352	1,173	850	989	669	160	0	0	-	55	129	1,296	6,663
Hec "Nishove" me fuqi 1,36 MW	1.360	"Nishova Energy" shpk	35kV	154	-	-	-	160	52	0	0	-	46	25	227	673
Hec "Shtika" me fuqi 1,3 MW	1.300	"Peparimi SK" shpk	10kV	665	734	483	416	216	6	0	0	-	32	63	628	3,242
Hec "Ballenje" me fuqi 1,9 MW	1.900	"Ballenja Power Martanesh" shpk	35kV	600	599	341	864	658	63	0	0	-	179	639	3,943	
Hec Gavran 1	0.998	"Gavran Energy" shpk	35kV	504	597	382	667	410	102	0	0	-	20	84	183	2,948
Hec Gavran 2	1.215	"Gavran Energy" shpk	35kV	387	479	302	603	450	158	0	0	-	77	60	308	2,824
Hec Kasollet e Seles 1	4.000	"Xhangjo Energji" shpk	35kV	1,718	2,005	1,145	1,718	1,432	573	286	0	286	286	573	1,432	11,455
Hec Holta Kabash	2.200	HEC Kabash Porocan shpk	35kV	1,593	1,771	1,906	2,777	1,315	680	218	3	121	455	659	1,726	13,224
Hec Holta Porocan	3.300		35kV	-	-	-	-	-	-	-	-	-	-	-	-	-
Hec Lusen 1	0.315	"Eurobiznes" shpk	35kV	79	104	87	133	132	24	16	6	-	-	-	62	643
Hec Ura e Fanit	1.000	"Aven As Energji" sha	35kV	541	510	533	523	542	524	496	449	355	334	279	524	5,610
HEC Gorice	1.747	"THE BLUE STAR" sh.p.k	35kV	657	798	699	1,140	679	121	0	0	-	168	145	699	5,106
HEC Kabash 1&2	5.800	"Univers Energji" shpk	35kV	1,260	1,365	630	840	315	-	0	0	-	370	1,420	6,200	
HEC "Tucep 2"	1.7	"DUKA T2" shpk	35kV	313	183	141	295	387	362	247	210	220	246	222	321	3,146
Hec Dobrenje Tomorrice	2.4	DAAB Energy Group shpk	35kV	637	630	515	599	431	301	214	165	186	291	252	563	4,781
Hec Razdoll	0.765	Hidro Vizion shpk (I pa licens nga ERE)	35kV	247	138	169	431	435	74	17	0	-	160	52	257	1,979
Hec Dragostunje	3.1	"HEC-i Dragostunje" shpk	35kV	3,151	3,314	1,854	2,942	3,073	1,047	0	0	-	59	805	3,318	19,564
Hec Stebleve	3.4	"PURE ENERGY STEBLEVA" shpk	35kV	374	410	246	606	576	77	0	0	-	-	27	353	2,669
Hec Zerec 1	0.55	"EnRel Hydro" shpk	35kV	1,034	976											

Hec Nderfushas	1.34	SGD Energji shpk	35	393	327	206	485	310	29	0	0	-	-	99	400	2,250
Hec Rreshen	0.38	Nikolli Energy shpk	10	175	157	172	164	138	60	48	0	127	95	89	152	1,378
Hec Gurra	0.5	Uleza Ndetim shpk	6	178	167	177	162	135	103	86	67	57	7	47	107	1,294
Hec Vile	1.994	Hydro Power Panaritii shpk	35	939	1,201	933	963	317	171	65	28	25	210	214	1,220	6,287
Hec Dukona	0.800	Dukona shpk	20	289	289	157	204	100	26	0	0	2	25	37	173	1,303
Hec Prevalli	1.750	Gega-G shpk	35	1,268	1,175	1,057	1,215	1,183	179	19	0	-	133	224	1,074	7,527
HEC Camerice	0.800	Rei Energy shpk	35	487	517	537	817	481	57	2	-	-	265	239	728	4,130
Hec Stroj	2.000	Era Hydro shpk	35	1,465	1,486	1,511	1,499	1,291	484	66	53	95	329	444	1,724	10,447
Hec Mivas	1.940	Elva 2001 shpk	35	423	993	1,050	1,110	610	148	5	-	-	85	68	882	5,375
Hec Spathare	1.038	Lucente concessionare shpk	10	377	649	724	436	621	327	103	18	-	0	1	492	3,748
Hec Miraka	0.600	Kuarci Blace shpk	10	285	332	206	207	85	21	0	0	1	14	36	206	1,392
Hec Shejtin	2.000	Irarba Energji shpk	10	348	353	405	421	316	164	2	-	66	148	125	311	2,660
hec Dobrunje	0.840	W.T.S. Energji shpk	10	212	222	269	320	453	339	57	0	-	24	139	248	2,283
Hec Muras	2	Mateo& Co shpk	10	156	676	816	1,244	1,168	1,048	76	0	-	-	372	956	6,512
Hec Trojet	0.9	Trojjet Energji shpk	10	113	436	364	468	234	20	0	0	-	6	38	389	2,068
Hec Denti	0.85	ASI TRE shpk	35	380	374	225	413	166	37	32	11	2	35	50	458	2,182
Hec Kamican	1.86	IGI 2005 shpk	35	-	100	691	1,277	705	219	18	0	-	100	277	930	4,317
Hec Vardar	1.97	Gerti shpk	35	-	-	-	977	1,273	226	15	0	-	140	175	1,123	3,928
Hec Stavec	6.5	Koka Ergi Stavec shpk	35	-	-	-	2,065	3,050	1,279	353	331	404	610	845	4,645	13,583
Hec Kalis	2.13	ERDY Energy shpk	35	-	-	-	223	466	254	128	116	233	331	1,078	2,830	
Hec Gjinar	0.83	Erdi Gas shpk	10	-	-	-	-	38	69	33	13	15	37	41	215	461
Hec Backa 1	3.36	Kroi Mbret shpk	35	-	-	-	-	811	644	3	-	-	184	261	2,260	4,163
Hec Plepi	2.28	Domi Tec shpk	35	-	-	-	-	154	41	4	-	-	-	41	56	297
Hec Zall Xhuxhe	4.7	Hec Zall Xhuxhe	35	-	-	-	-	267	461	237	13	12	33	192	1,171	2,385
Hec Pisha	1.9	Green TECH energy systems	35	-	-	-	-	-	-	2	0	4	75	81	322	483
Hec Lingjanca1&2	2.2	"Rei-Energji"shpk	35	-	-	-	-	-	-	-	-	36	303	423	1,012	1,774
Hec Guri i Zi	1.7	"Aris Albania"shpk	35	-	-	-	-	-	-	-	-	-	64	4	206	274
	<b>318</b>			<b>123,027</b>	<b>127,093</b>	<b>166,488</b>	<b>137,509</b>	<b>115,240</b>	<b>51,400</b>	<b>21,140</b>	<b>12,333</b>	<b>11,620</b>	<b>32,580</b>	<b>37,145</b>	<b>129,655</b>	<b>965,230</b>

PRODHIMI GJATE VITIT 2021 NGA CENTRALET FOTOVOLTAIKE TË LIDHURA NE RRJETIN E SHPERNDARJES (MWh)																
CENTRAL FOTOVOLTAIK	MW	SUBJEKTI	LIDHJA	JANAR	SHKURT	MARS	PRILL	MAJ	Qeshor	Korrik	Gusht	Shtator	Teor	Nentor	Dhjetor	2021
UKKO (pa sistemuarne sistem)	1	"UKKO"sha (Ujssjell.Kanal.Korce)														
Seman - 2	2	"SEMAN2SUN" sh.p.k	35 kV	166	241	365	368	465	483	490	448	373	295	157	171	4,021
Topojë	2	"SONNE" sh.p.k	35 kV	165	240	368	368	464	480	485	444	371	292	155	169	4,001
Topojë 2	2	"AED SOLAR" sh.p.k	35 kV	165	239	430	304	463	478	484	443	370	292	157	175	4,001
Topojë (Sheq Marinas)	2	"AGE SUNPOWER" sh.p.k	35 kV	164	239	365	367	462	478	485	444	371	292	154	168	3,990
Topojë (Sheq Marinas) 2	2	"SEMAN SUNPOWER" sh.p.k	35 kV	167	243	370	371	467	483	489	448	375	298	161	178	4,049
Seman Isolar	2	"SEMANISOLAR " sh.p.k	35 kV	174	245	366	359	447	455	462	432	368	299	160	183	3,950
FV Lugano	2	ES 2019 sh.p.k	35 kV	187	271	414	385	476	488	505	471	399	329	178	199	4,304
FV SMART WATT	2	SMART WATT sh.p.k	35 kV	188	271	411	383	473	488	502	467	397	328	177	204	4,290
Tren Bilisht	2	"RTS " sh.p.k	35 kV	164	259	328	333	414	402	423	426	322	258	152	187	3,668
STATKRAFT Renewbles albani PV Lundrues banje	2	"STATKRAFT"	35 kV	-	-	-	-	-	13	-	-	-	-	-	-	13
Plug, Lushnje	2	"AEE" sh.p.k	10 kV	192	239	362	471	543	489	519	566	407	341	162	177	4,469
	<b>23</b>			<b>1,734</b>	<b>2,488</b>	<b>3,779</b>	<b>3,708</b>	<b>4,674</b>	<b>4,737</b>	<b>4,844</b>	<b>4,588</b>	<b>3,754</b>	<b>3,024</b>	<b>1,615</b>	<b>1,812</b>	<b>40,756</b>

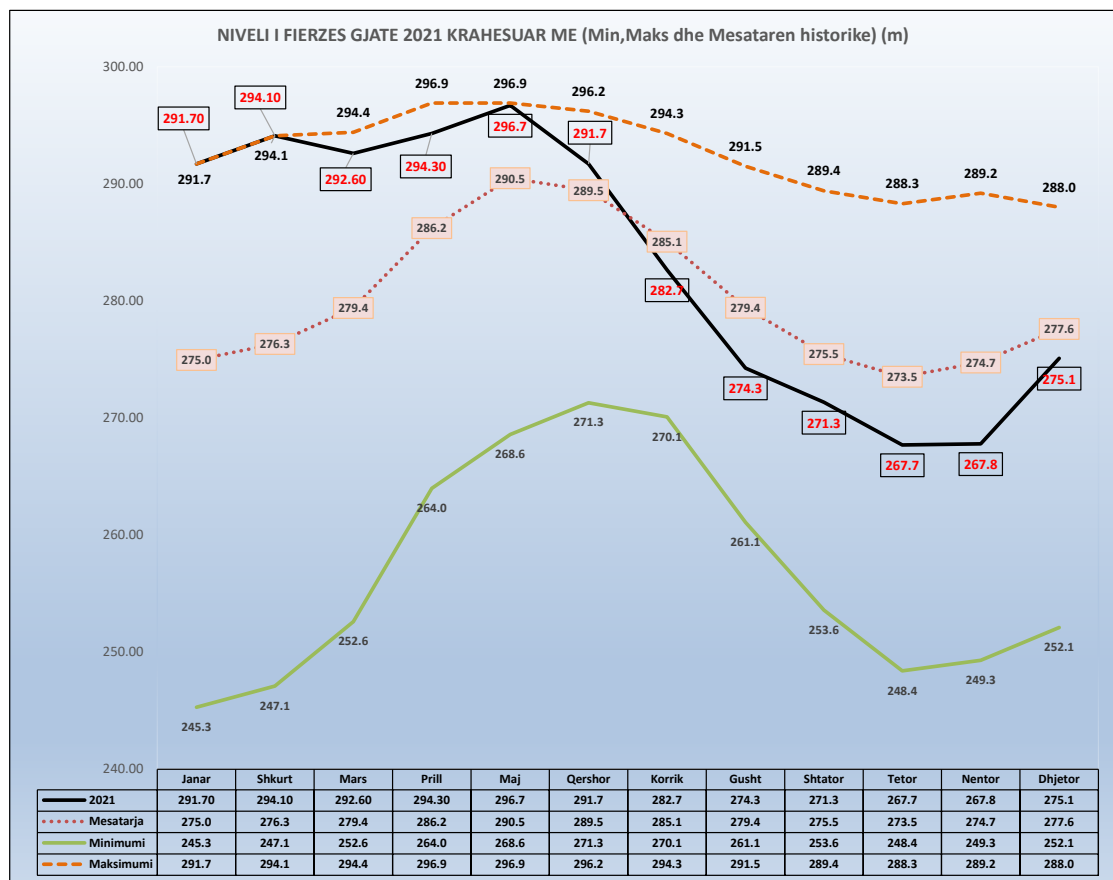
Kapaciteti Instaluar i gjithe prodhuesve **2,605** MW

Prodhimi Vendas

**8,962,699**

	NIVELI I FIERZES 1991-2021											
	Janar	Shkurt	Mars	Prill	Maj	Qershor	Korrik	Gusht	Shtator	Tetor	Nentor	Dhjetor
1991	254.4	260.8	268.6	279.9	293.4	296.1	294.0	291.5	289.4	288.3	288.8	285.1
1992	278.0	274.1	268.0	278.8	281.0	279.6	275.2	268.7	263.9	271.4	281.9	280.6
1993	275.2	265.3	264.7	278.5	280.5	277.3	271.0	261.1	253.6	249.9	255.6	270.2
1994	254.4	260.8	268.6	279.9	293.4	296.1	294.0	291.5	289.4	288.3	288.8	285.1
1995	253.8	260.3	262.5	275.3	289.0	288.7	284.5	282.2	288.2	283.8	279.9	287.5
1996	287.1	288.7	286.5	294.7	295.8	293.1	287.6	282.2	285.1	284.3	289.2	291.3
1997	289.4	284.5	281.7	285.2	294.1	292.0	287.0	280.0	272.9	272.4	270.8	277.2
1998	273.7	270.0	265.2	278.9	288.1	287.4	281.8	277.6	276.0	277.1	279.0	277.1
1999	272.7	275.6	281.5	290.5	295.9	293.3	288.3	279.5	271.0	257.6	263.6	276.9
2000	276.4	276.7	276.8	286.9	286.6	280.1	273.5	267.5	261.6	248.4	249.3	252.1
2001	253.6	258.2	275.1	282.9	287.6	283.8	273.7	271.1	269.2	263.6	263.2	252.1
2002	245.3	247.1	252.6	264.0	268.6	271.3	270.1	267.8	274.3	286.1	285.3	284.0
2003	291.1	289.5	286.3	287.0	292.3	290.3	285.9	280.8	276.0	282.6	285.6	283.3
2004	284.7	290.8	293.4	296.0	296.2	296.2	293.1	286.3	281.1	280.0	286.1	288.0
2005	281.2	281.5	293.3	296.1	295.6	294.1	286.7	277.2	266.5	256.9	253.6	279.0
2006	283.5	288.6	294.4	295.9	296.5	295.9	293.8	290.2	285.3	278.7	266.2	256.2
2007	256.1	263.7	272.0	276.8	276.8	274.8	268.5	263.6	261.8	261.1	275.8	282.1
2008	285.1	289.7	290.9	295.5	295.3	295.7	294.3	288.6	283.9	280.9	285.2	286.5
2009	283.6	281.8	283.4	292.5	293.7	292.4	288.0	281.2	276.2	271.6	266.3	280.1
2010	290.1	289.2	293.9	296.0	296.3	294.4	291.8	288.6	284.9	285.2	284.3	287.5
2011	281.6	274.4	275.0	276.6	281.0	286.1	284.7	279.0	273.9	268.2	261.6	264.5
2012	265.8	267.7	262.0	280.2	293.4	294.4	288.4	280.4	261.4	261.6	269.0	276.6
2013	278.3	281.5	294.8	296.9	296.9	294.2	289.7	283.6	280.8	281.4	282.5	276.1
2014	275.1	277.5	274.6	285.3	292.9	294.9	291.7	286.8	285.5	285.0	284.8	286.3
2015	288.7	289.4	292.2	296.3	296.1	293.3	287.5	280.1	272.1	275.4	278.9	275.9
2016	289.9	292.4	291.8	296.5	296.2	295.6	290.5	285.4	283.3	288.4	288.9	281.6
2017	271.5	277.7	280.9	278.7	281.6	272.4	270.2	268.0	271.0	264.6	269.6	289.9
2018	289.7	292.0	295.0	296.5	296.4	296.0	294.0	287.5	277.9	270.2	266.5	267.3
2019	267.3	268.2	272.7	279.9	289.9	292.7	287.6	278.5	274.2	268.6	273.2	275.6
2020	271.62	271.98	283.50	288.55	293.6	291.7	284.6	276.5	273.5	274.1	268.7	272.7
2021	291.70	294.10	292.60	294.30	296.7	291.7	282.7	274.3	271.3	267.7	267.8	275.1

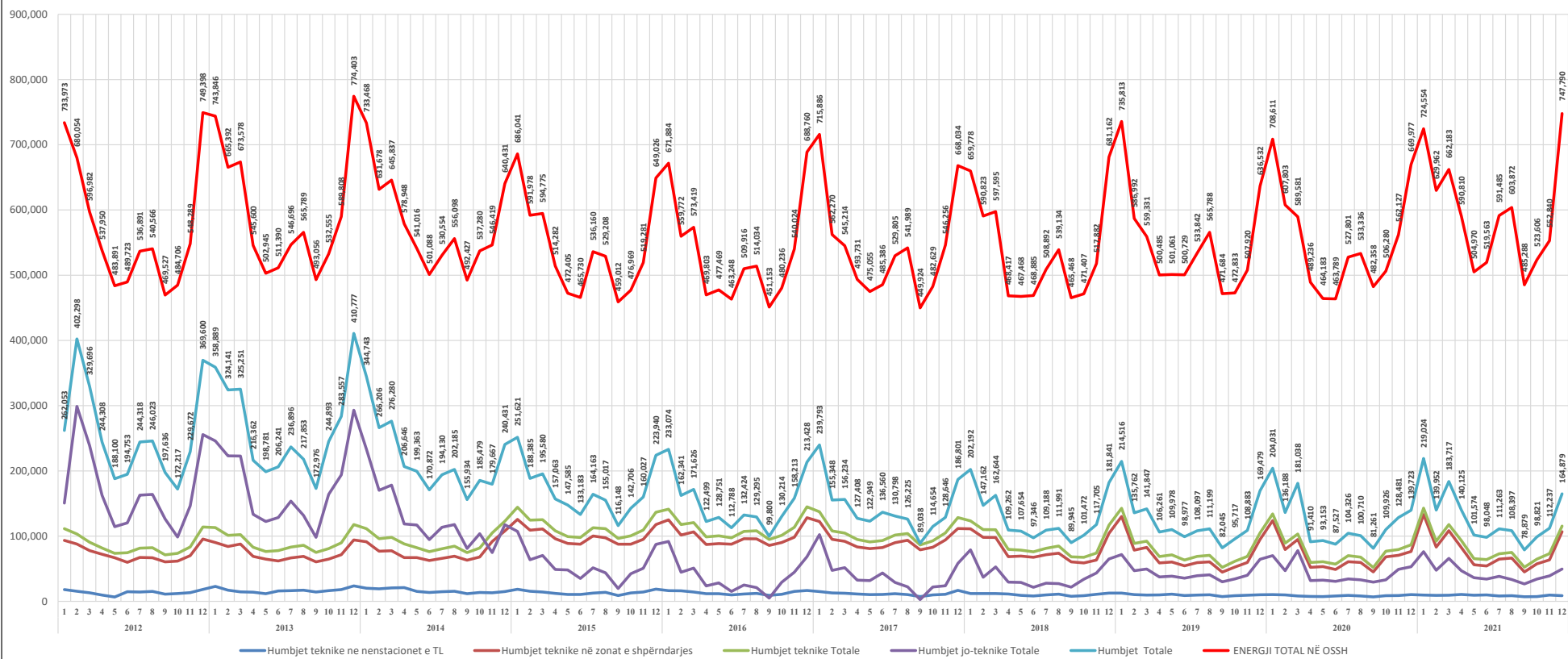
	Janar	Shkurt	Mars	Prill	Maj	Qershor	Korrik	Gusht	Shtator	Tetor	Nentor	Dhjetor
2021	291.70	294.10	292.60	294.30	296.7	291.7	282.7	274.3	271.3	267.7	267.8	275.1
Mesatarja	275.0	276.3	279.4	286.2	290.5	289.5	285.1	279.4	275.5	273.5	274.7	277.6
Minimumi	245.3	247.1	252.6	264.0	268.6	271.3	270.1	261.1	253.6	248.4	249.3	252.1
Maksimumi	291.7	294.1	294.4	296.9	296.9	296.2	294.3	291.5	289.4	288.3	289.2	288.0



HUMBJET (SHPËRNDARJE) 2009-2021

	2012	2013	2014	2015	2016	2017	2018	2019	2020	2021
Humbjet teknike ne nencstacionet e T L	33,973	36,263	18,538	11,515	34,41	34,41	34,41	34,41	34,41	34,41
Humbjet teknike në zonat e shpërndarjes	80,054	80,298	80,830	83,368	82,874	82,874	82,874	82,874	82,874	82,874
Humbjet teknike Totale	114,027	116,561	99,368	94,883	117,285	117,285	117,285	117,285	117,285	117,285
Humbjet jo-teknike Totale	483,891	483,891	483,891	483,891	483,891	483,891	483,891	483,891	483,891	483,891
Humbjet Totale	617,918	617,918	617,918	617,918	617,918	617,918	617,918	617,918	617,918	617,918
ENERGJI TOTAL NË OSSH	33,973	36,263	18,538	11,515	34,41	34,41	34,41	34,41	34,41	34,41

HUMBJET NË SISTEMIN E SHPËRNDARJES SË ENERGISJË ELEKTRIKE PËR PERIUDHËN 2012-2021 (MWh)

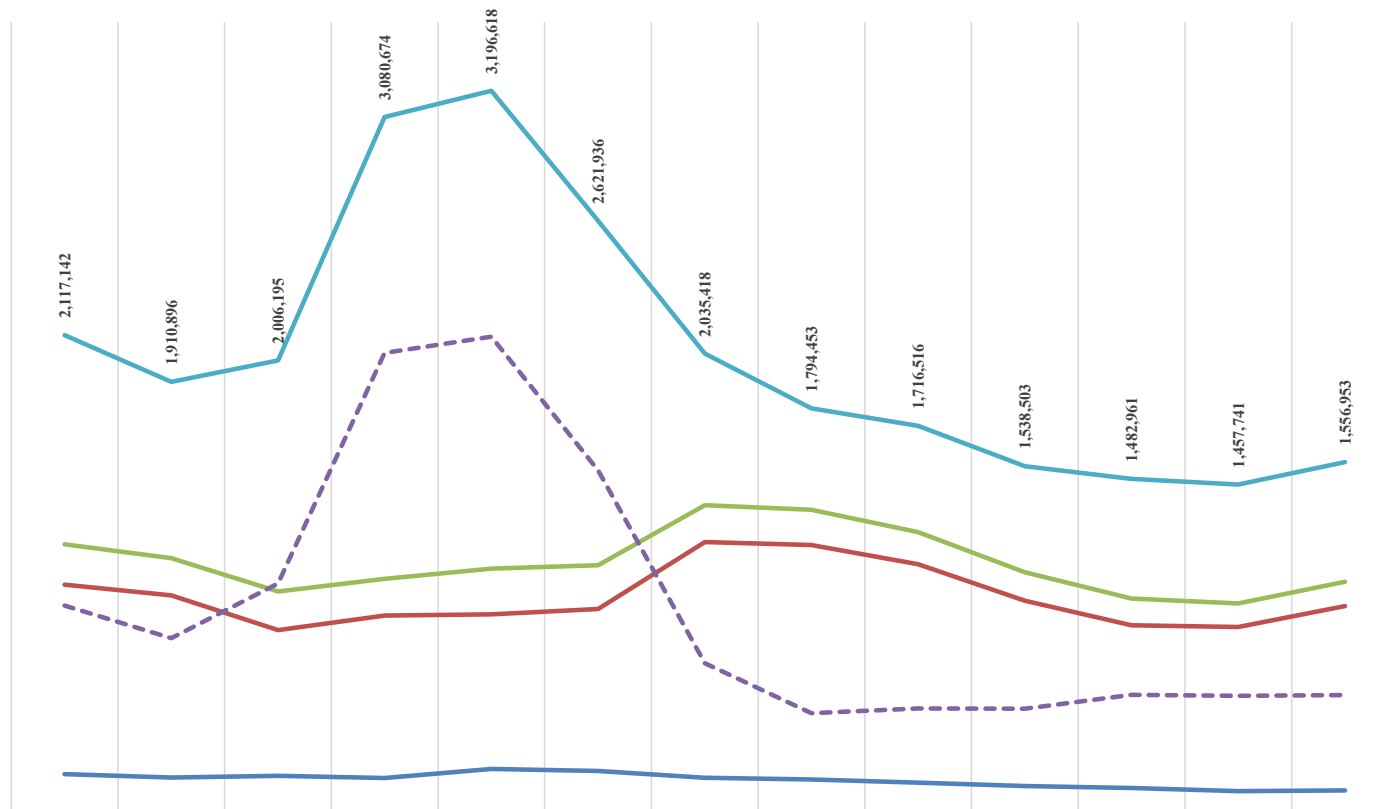


1.138.023 1.586.916 538.340 1.038.668 791.339 10.339

### HUMBJET NE RRJETIN E SHPERNDARJES 2009-2021 (MWh)

	2009	2010	2011	2012	2013	2014	2015	2016	2017	2018	2019	2020	2021
HUMBJE TEKNIKE NE TL (N/ST)	178,738	163,546	170,937	161,831	201,684	193,208	162,725	155,629	141,707	125,974	117,739	103,729	107,340
HUMBJE TEKNIKE NE ZONAT E OSSH	1,015,450	968,535	814,826	879,616	884,360	908,416	1,203,793	1,190,872	1,106,007	944,587	836,561	828,906	921,330
TOTALI I HUMBJEVE TEKNIKE OSSH	1,194,188	1,132,081	985,763	1,041,447	1,086,044	1,101,624	1,366,518	1,346,501	1,247,714	1,070,560	954,300	932,635	1,028,670
HUMBJE JOTOKNIKE OSSH	922,954	778,815	1,020,432	2,039,227	2,110,575	1,520,312	668,900	447,952	468,802	467,943	528,661	525,106	528,283
TOTALI I HUMBJEVE OSSH	2,117,142	1,910,896	2,006,195	3,080,674	3,196,618	2,621,936	2,035,418	1,794,453	1,716,516	1,538,503	1,482,961	1,457,741	1,556,953

### HUMBJET NE RRJETIN E SHPERNDARJES 2009-2021 (MWh)



	2009	2010	2011	2012	2013	2014	2015	2016	2017	2018	2019	2020	2021
HUMBJE TEKNIKE NE TL (N/ST)	178,738	163,546	170,937	161,831	201,684	193,208	162,725	155,629	141,707	125,974	117,739	103,729	107,340
HUMBJE TEKNIKE NE ZONAT E OSSH	1,015,450	968,535	814,826	879,616	884,360	908,416	1,203,793	1,190,872	1,106,007	944,587	836,561	828,906	921,330
TOTALI I HUMBJEVE TEKNIKE OSSH	1,194,188	1,132,081	985,763	1,041,447	1,086,044	1,101,624	1,366,518	1,346,501	1,247,714	1,070,560	954,300	932,635	1,028,670
HUMBJE JOTOKNIKE OSSH	922,954	778,815	1,020,432	2,039,227	2,110,575	1,520,312	668,900	447,952	468,802	467,943	528,661	525,106	528,283
TOTALI I HUMBJEVE OSSH	2,117,142	1,910,896	2,006,195	3,080,674	3,196,618	2,621,936	2,035,418	1,794,453	1,716,516	1,538,503	1,482,961	1,457,741	1,556,953

FATURIM-ARKETIMET DHE NDORYSHIMI I GJENDJES DEBITORE GJTE VITIT 2014 (000LEKE)

Viti 2014	Te arketuesheme		Arketimi per faturat e 2014			Arketimi per faturat e 2007-2013		Arketimi total	Te Arketueshme per energjine e faturnar ne vitin 2014		Ndryshimi i gjendes se Llogarive te arketueshme gjate vitit 2014	Shuarje Detyrimesh me VKM nr 186, dt 03.04.2014
	2	Faturat 2014	5	7	6#5+7	9#(2-5)	10#(2-5-7-a)					
Janar	77,385,338	4,899,849	3,893,288	296,782	3,899,070	1,366,861	3,899,070	1,010,880	0	0		
Shkurt	73,231,148	4,623,841	1,224,858	2,553,263	1,278,119	3,399,083	3,399,083	845,821	0	0		
Mars	73,965,562	4,645,564	3,226,836	744,355	3,871,150	1,416,729	3,871,150	674,414	0	0		
Priill	70,876,446	4,338,131	3,293,530	880,634	3,972,164	1,247,391	3,972,164	3,229,116	0	3,795,873		
Maj	71,544,520	4,395,131	3,241,041	374,812	3,719,457	1,845,074	3,719,457	488,084	0	397,423		
Qershor	72,209,337	4,025,464	3,065,523	295,134	3,360,657	959,841	3,360,657	664,807	0	0		
Korrik	72,816,893	4,097,547	3,134,502	305,088	3,489,991	912,644	3,489,991	607,556	0	0		
Gusht	73,094,774	4,099,885	3,115,141	311,467	3,426,607	1,084,744	3,426,607	677,281	0	14,650		
Shtator	73,957,145	4,065,702	3,343,188	1,068,912	4,412,100	1,722,918	4,412,100	1,167,650	0	820,233		
Tetor	73,639,240	4,280,736	3,647,130	457,234	4,104,334	833,886	4,104,334	163,095	0	73,367		
Nentor	72,771,144	4,494,628	3,459,192,00	894,432	4,383,624	1,045,336	4,383,624	140,904	0	0		
Dhjetor	71,495,647	4,985,558	4,275,473	2,077,180	6,352,653	712,883	6,352,653	1,385,097	0	0		
<b>Total</b>	<b>71,374,447</b>	<b>5,187,974</b>	<b>38,770,984</b>	<b>10,666,842</b>	<b>48,833,927</b>	<b>14,387,890</b>	<b>48,833,927</b>	<b>4,287,448</b>				

FATURIM-ARKETIMET DHE NDORYSHIMI I GJENDJES DEBITORE GJTE VITIT 2015 (000LEKE)

Viti 2015	Te arketuesheme		Arketimi per faturat e 2015			Arketimi per faturat e 2007-2014		Arketimi total	Te Arketueshme per energjine e faturnar ne vitin 2015		Ndryshimi i gjendes se Llogarive te arketueshme gjate vitit 2015	Shuarje Detyrimesh
	2	Faturat 2015	5	7	6#5+7	9#(2-5)	10#(2-5-7-a)					
Janar	77,486,047	5,549,211	38,385	5,560,203	5,618,688	5,490,926	5,618,688	69,378	a	0		
Shkurt	70,243,444	5,593,004	4,241,484	2,444,805	6,686,289	1,351,880	6,686,289	1,093,225	0	0		
Mars	70,024,144	5,588,150	4,663,802	1,139,548	5,797,450	924,348	5,797,450	209,300	0	0		
Priill	69,312,325	5,633,827	4,024,888	3,090,265	4,837,198	482,776	4,837,198	3,221,229	0	1,331,201		
Maj	66,968,972	4,521,897	4,234,873	504,756	4,739,629	266,963	4,739,629	1,943,943	0	1,726,151		
Qershor	67,098,219	4,693,380	4,081,633	309,420	4,391,053	610,297	4,391,053	229,247	0	71,630		
Korrik	67,547,043	4,558,700	4,246,167	372,576	4,618,743	1,012,833	4,618,743	446,824	0	191,133		
Gusht	67,611,791	5,241,868	4,083,964	324,983	4,408,947	710,004	4,408,947	64,708	0	349,613		
Shtator	67,453,478	4,435,022	4,700,033	293,862	4,993,295	184,889	4,993,295	158,274	0	0		
Tetor	67,286,789	4,689,824	4,541,734	308,818	4,850,612	142,130	4,850,612	166,689	0	0		
Nentor	67,859,634	4,991,643	4,002,208	298,490	4,318,698	871,235	4,318,698	672,248	0	0		
Dhjetor	68,863,189	5,872,243	4,759,948	277,740	5,028,688	1,121,295	5,028,688	843,556	0	0		
<b>Total</b>	<b>681,780,668</b>	<b>61,780,685</b>	<b>48,491,589</b>	<b>12,225,002</b>	<b>60,716,591</b>	<b>13,289,076</b>	<b>60,716,591</b>	<b>3,666,932</b>				

FATURIM-ARKETIMET DHE NDORYSHIMI I GJENDJES DEBITORE GJTE VITIT 2016 (000LEKE)

Viti 2016	Te arketuesheme		Arketimi per faturat e 2016			Arketimi per faturat e 2007-2015		Arketimi total	Te Arketueshme per energjine e faturnar ne vitin 2016		Ndryshimi i gjendes se Llogarive te arketueshme gjate vitit 2016	Shuarje Detyrimesh
	2	Faturat 2016	5	7	6#5+7	9#(2-5)	10#(2-5-7-a)					
Janar	69,343,432	5,987,071	11,839	5,996,679	5,877,628	5,876,962	5,877,628	580,343	0	0		
Shkurt	69,629,271	5,443,903	3,744,688	1,658,075	5,399,763	1,708,824	5,399,763	234,739	0	0		
Mars	69,921,388	5,517,827	3,513,365	1,931,365	5,284,839	849,082	5,284,839	309,287	0	0		
Priill	69,784,727	4,626,977	4,644,557	324,851	4,969,408	185,420	4,969,408	138,431	0	0		
Maj	67,642,795	4,835,733	4,354,256	276,498	4,784,374	331,477	4,784,374	2,145,632	0	2,800,490		
Qershor	67,561,589	4,525,147	4,291,567	245,880	4,537,447	148,663	4,537,447	465,794	0	0		
Korrik	68,121,673	5,241,499	4,390,633	231,203	4,621,835	351,376	4,621,835	620,084	0	0		
Gusht	68,364,412	5,309,834	4,799,586	267,109	5,066,695	509,848	5,066,695	242,739	0	0		
Shtator	68,120,344	4,844,483	4,650,053	207,093	4,854,541	393,633	4,854,541	146,658	0	0		
Tetor	68,499,795	4,844,623	4,599,527	249,201	4,848,727	354,252	4,848,727	39,301	0	0		
Nentor	69,372,496	5,236,378	4,175,054	188,533	4,363,587	1,061,324	4,363,587	872,731	0	0		
Dhjetor	70,720,041	6,410,681	4,854,705	208,411	5,063,116	1,555,976	5,063,116	1,347,565	0	0		
<b>Total</b>	<b>68,803,189</b>	<b>6,012,893</b>	<b>49,128,839</b>	<b>9,537,411</b>	<b>58,666,251</b>	<b>13,883,054</b>	<b>58,666,251</b>	<b>2,800,490</b>				

FATURIM-ARKETIMET DHE NDORYSHIMI I GJENDJES DEBITORE GJTE VITIT 2017 (000LEKE)

Viti 2017	Te arketuesheme		Arketimi per faturat e 2017			Arketimi per faturat e 2007-2016		Arketimi total	Te Arketueshme per energjine e faturnar ne vitin 2017		Ndryshimi i gjendes se Llogarive te arketueshme gjate vitit 2017	Shuarje Detyrimesh
	2	Faturat 2017	5	7	6#5+7	9#(2-5)	10#(2-5-7-a)					
Janar	70,728,087	6,192,711	5,469	6,146,621	6,144,201	6,190,613	6,144,201	720,539	0	0		
Shkurt	71,348,179	5,523,527	3,623,646	1,691,313	5,424,959	1,499,923	5,424,959	913,392	0	0		
Mars	70,863,992	5,141,318	4,963,971	661,634	5,625,565	177,347	5,625,565	484,187	0	0		
Priill	70,863,742	4,857,464	4,523,635	333,899	4,857,534	331,849	4,857,534	80	0	0		
Maj	70,788,551	4,667,683	4,456,142	211,541	4,667,683	1,000,290	4,667,683	465,487	0	0		
Qershor	70,781,663	4,675,924	4,055,720	231,137	4,286,856	620,264	4,286,856	389,068	0	0		
Korrik	71,328,868	5,435,009	4,599,634	302,110	4,901,744	855,375	4,901,744	533,265	0	0		
Gusht	70,465,546	5,335,319	4,396,203	299,038	4,695,241	309,736	4,695,241	308,678	0	0		
Shtator	71,143,246	4,924,248	4,534,493	389,824	4,924,317	222,420	4,924,317	208,860	0	0		
Tetor	71,047,597	4,902,445	4,759,610	247,823	5,007,434	142,834	5,007,434	305,089	0	0		
Nentor	72,031,524	5,527,306	4,313,657	229,722	4,543,379	983,649	4,543,379	983,649	0	0		
Dhjetor	73,868,682	6,247,239	5,153,658	376,652	5,530,310	1,033,611	5,530,310	877,138	0	0		
<b>Total</b>	<b>70,728,087</b>	<b>6,192,711</b>	<b>49,128,839</b>	<b>9,537,411</b>	<b>58,666,251</b>	<b>13,883,054</b>	<b>58,666,251</b>	<b>2,800,490</b>				

FATURIM-ARKETIMET DHE NDORYSHIMI I GJENDJES DEBITORE GJTE VITIT 2018 (000LEKE)

Viti 2018	Te arketuesheme		Arketimi per faturat e 2018			Arketimi per faturat e 2007-2017		Arketimi total	Te Arketueshme per energjine e faturnar ne vitin 2018		Ndryshimi i gjendes se Llogarive te arketueshme gjate vitit 2018	Shuarje Detyrimesh
	2	Faturat 2018	5	7	6#5+7	9#(2-5)	10#(2-5-7-a)					
Janar	72,848,663	5,939,299	6,159	6,449,938	6,444,201	5,877,019	6,444,201	178,879	0	0		
Shkurt	72,617,109	5,465,134	3,877,405	1,623,123	5,424,529	1,506	5,424,529	1,506	0	0		
Mars	72,136,005	5,486,342	5,123,171	609,855	6,006,056	355,181	6,006,056	335,704	0	0		
Priill	71,388,465	4,671,224	4,519,294	127,530	4,646,824	829,070	4,646,824	947,600	0	0		
Maj	70,966,669	4,711,713	4,039,152	316,617	4,355,769	108,179	4,355,769	483,797	0	0		
Qershor	71,143,813	4,976,161	4,391,221	343,516	4,734,737	890,940	4,734,737	237,425	0	0		
Korrik	71,328,917	5,403,874	4,891,796	129,195	5,021,991	688,078	5,021,991	178,883	0	0		
Gusht	71,040,863	5,805,753	5,141,791	376,841	5,518,632	664,000	5,518,632	287,189	0	0		
Shtator	71,264,985	5,047,850	4,608,659	312,208	4,920,867	491,791	4,920,867	313,863	0	0		
Tetor	70,741,812	4,975,893	4,353,225	337,649	4,690,874	386,133	4,690,874	513,982	0	0		
Nentor	71,279,659	5,318,250	4,311,134	471,588	4,782,763	1,001,236	4,782,763	529,647	0	0		
Dhjetor	71,896,707	6,625,289	5,579,121	420,120	5,999,241	1,046,168	5,999,241	626,068	0	0		
<b>Total</b>	<b>72,848,663</b>	<b>6,192,711</b>	<b>49,128,839</b>	<b>9,537,411</b>	<b>58,666,251</b>	<b>13,883,054</b>	<b>58,666,251</b>	<b>2,800,490</b>				

FATURIM-ARKETIMET DHE NDORYSHIMI I GJENDJES DEBITORE GJTE VITIT 2019 (000LEKE)

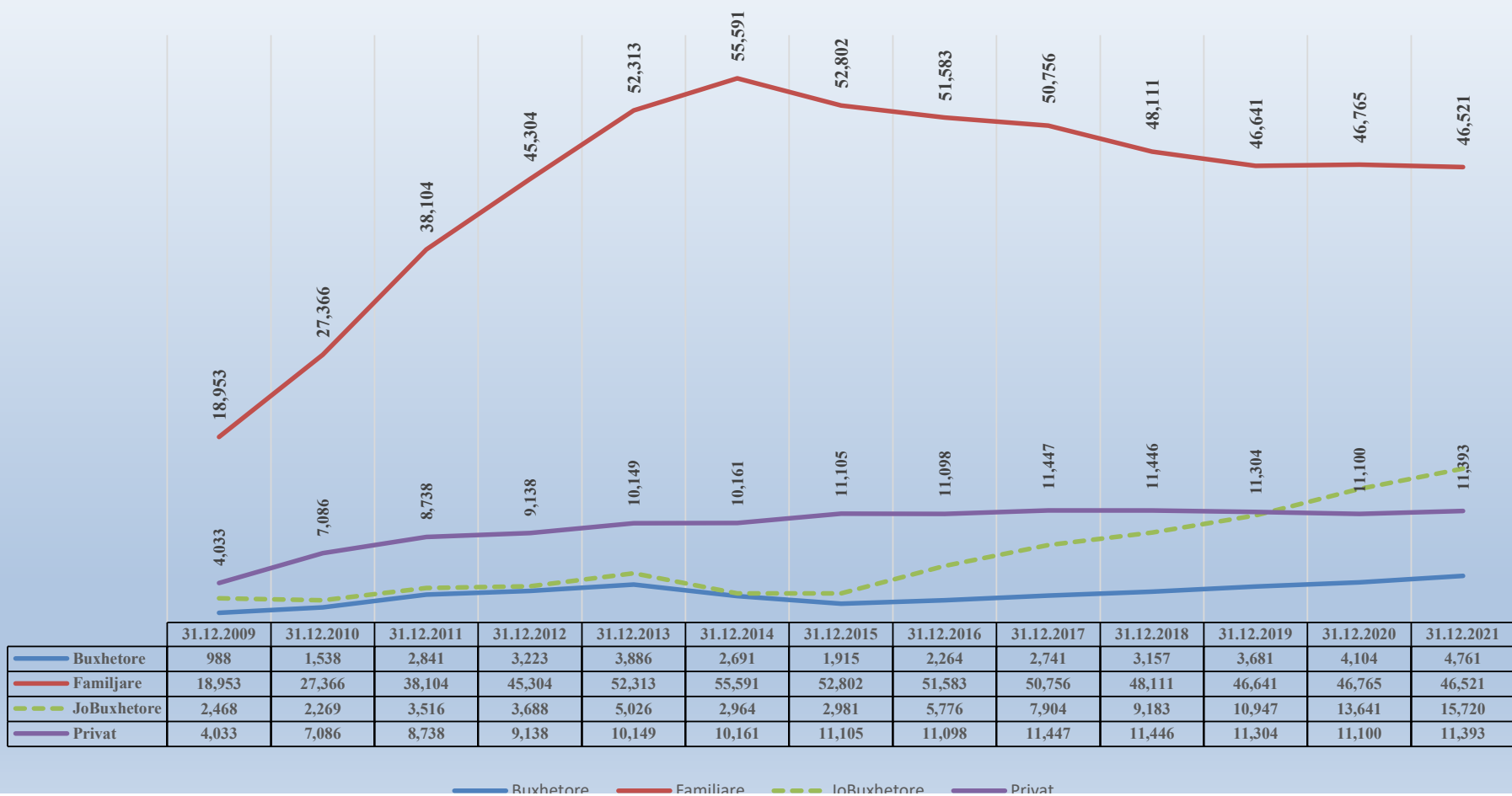
Viti 2019	Te arketuesheme		Arketimi per faturat e 2019			Arketimi per faturat e 2007-2018		Arketimi total	Te Arketueshme per energjine e faturnar ne vitin 2019		Ndryshimi i gjendes se Llogarive te arketueshme gjate vitit 2019	Shuarje Detyrimesh
	2	Faturat 2019	5	7	6#5+7	9#(2-5)	10#(2-5-7-a)					
Janar	71,967,707	6,718,114	11,909	6,496,188	6,012,963	6,098,206	6,496,188	698,051	0	0		
Shkurt	72,360,349	5,819,929	1,824,211	3,994,716	4,818,913	1,448,193	4,818,913	1,448,193	0	0		
Mars	71,897											

2010	2011	2012	2013	2014	2015	2016	2017	2018	2019	2020	2021	2022	
3214	3103	3024	3221	3189	3162	3045	3024	3015	3030	3000	2950	2900	2850
4237	4111	4021	4321	4244	4154	3954	3911	3885	3901	3854	3800	3750	3700
4781	4632	4524	4841	4724	4634	4424	4381	4345	4354	4304	4250	4200	4150
5321	5154	5041	5381	5244	5134	4924	4881	4845	4854	4804	4750	4700	4650
5861	5684	5574	5921	5784	5674	5464	5421	5385	5394	5344	5290	5240	5190
6401	6224	6114	6461	6324	6214	6004	5961	5925	5934	5884	5830	5780	5730
6941	6764	6654	7001	6864	6754	6544	6501	6465	6474	6424	6370	6320	6270
7481	7304	7194	7541	7404	7294	7084	7041	7005	7014	6964	6910	6860	6810
8021	7844	7734	8081	7944	7834	7624	7581	7545	7554	7504	7450	7400	7350
8561	8384	8274	8621	8484	8374	8164	8121	8085	8094	8044	7990	7940	7890
9101	8924	8814	9161	9024	8914	8704	8661	8625	8634	8584	8530	8480	8430
9641	9464	9354	9701	9564	9454	9244	9201	9165	9174	9124	9070	9020	8970
10181	10004	9894	10241	10104	9994	9784	9741	9705	9714	9664	9610	9560	9510
10721	10544	10434	10781	10644	10534	10324	10281	10245	10254	10204	10150	10100	10050
11261	11084	10974	11321	11184	11074	10864	10821	10785	10794	10744	10690	10640	10590
11801	11624	11514	11861	11724	11614	11404	11361	11325	11334	11284	11230	11180	11130
12341	12164	12054	12401	12264	12154	11944	11901	11865	11874	11824	11770	11720	11670
12881	12704	12594	12941	12804	12694	12484	12441	12405	12414	12364	12310	12260	12210
13421	13244	13134	13481	13344	13234	13024	12981	12945	12954	12904	12850	12800	12750
13961	13784	13674	14021	13884	13774	13564	13521	13485	13494	13444	13390	13340	13290
14501	14324	14214	14561	14424	14314	14104	14061	14025	14034	13984	13930	13880	13830
15041	14864	14754	15111	14974	14864	14654	14611	14575	14584	14534	14480	14430	14380
15581	15404	15294	15641	15504	15394	15184	15141	15105	15114	15064	15010	14960	14910
16121	15944	15834	16181	16044	15934	15724	15681	15645	15654	15604	15550	15500	15450
16661	16484	16374	16721	16584	16474	16264	16221	16185	16194	16144	16090	16040	15990
17201	17024	16914	17261	17124	17014	16804	16761	16725	16734	16684	16630	16580	16530
17741	17564	17454	17811	17674	17564	17354	17311	17275	17284	17234	17180	17130	17080
18281	18104	17994	18341	18204	18094	17884	17841	17805	17814	17764	17710	17660	17610
18821	18644	18534	18891	18754	18644	18434	18391	18355	18364	18314	18260	18210	18160
19361	19184	19074	19421	19284	19174	18964	18921	18885	18894	18844	18790	18740	18690
19901	19724	19614	19961	19824	19714	19504	19461	19425	19434	19384	19330	19280	19230
20441	20264	20154	20511	20374	20264	20054	20011	19975	19984	19934	19880	19830	19780
20981	20804	20694	21041	20904	20794	20584	20541	20505	20514	20464	20410	20360	20310
21521	21344	21234	21591	21454	21344	21134	21091	21055	21064	21014	20960	20910	20860
22061	21884	21774	22131	22004	21894	21684	21641	21605	21614	21564	21510	21460	21410
22601	22424	22314	22671	22534	22424	22214	22171	22135	22144	22094	22040	21990	21940
23141	22964	22854	23211	23074	22964	22754	22711	22675	22684	22634	22580	22530	22480
23681	23504	23394	23751	23614	23504	23294	23251	23215	23224	23174	23120	23070	23020
24221	24044	23934	24291	24154	24044	23834	23791	23755	23764	23714	23660	23610	23560
24761	24584	24474	24831	24694	24584	24374	24331	24295	24304	24254	24200	24150	24100
25301	25124	25014	25371	25234	25124	24914	24871	24835	24844	24794	24740	24690	24640
25841	25664	25554	25911	25774	25664	25454	25411	25375	25384	25334	25280	25230	25180
26381	26204	26094	26451	26314	26204	25994	25951	25915	25924	25874	25820	25770	25720
26921	26744	26634	27001	26864	26754	26544	26501	26465	26474	26424	26370	26320	26270
27461	27284	27174	27531	27394	27284	27074	27031	26995	27004	26954	26900	26850	26800
28001	27824	27714	28071	27934	27824	27614	27571	27535	27544	27494	27440	27390	27340
28541	28364	28254	28611	28474	28364	28154	28111	28075	28084	28034	27980	27930	27880
29081	28904	28794	29151	29014	28904	28694	28651	28615	28624	28574	28520	28470	28420
29621	29444	29334	29701	29564	29454	29244	29201	29165	29174	29124	29070	29020	28970
30161	29984	29874	30241	30104	29994	29784	29741	29705	29714	29664	29610	29560	29510
30701	30524	30414	30781	30644	30534	30324	30281	30245	30254	30204	30150	30100	30050
31241	31064	30954	31321	31184	31074	30864	30821	30785	30794	30744	30690	30640	30590
31781	31604	31494	31851	31714	31604	31394	31351	31315	31324	31274	31220	31170	31120
32321	32144	32034	32401	32264	32154	31944	31901	31865	31874	31824	31770	31720	31670
32861	32684	32574	32931	32794	32684	32474	32431	32395	32404	32354	32300	32250	32200
33401	33224	33114	33471	33334	33224	33014	32971	32935	32944	32894	32840	32790	32740
33941	33764	33654	34021	33884	33774	33564	33521	33485	33494	33444	33390	33340	33290
34481	34304	34194	34551	34414	34304	34094	34051	34015	34024	33974	33920	33870	33820
35021	34844	34734	35191	35054	34944	34734	34691	34655	34664	34614	34560	34510	34460
35561	35384	35274	35631	35494	35384	35174	35131	35095	35104	35054	35000	34950	34900
36101	35924	35814	36271	36134	36024	35814	35771	35735	35744	35694	35640	35590	35540
36641	36464	36354	36711	36574	36464	36254	36211	36175	36184	36134	36080	36030	35980
37181	37004	36894	37251	37114	37004	36794	36751	36715	36724	36674	36620	36570	36520
37721	37544	37434	37801	37664	37554	37344	37301	37265	37274	37224	37170	37120	37070
38261	38084	37974	38331	38194	38084	37874	37831	37795	37804	37754	37700	37650	37600
38801	38624	38514	38871	38734	38624	38414	38371	38335	38344	38294	38240	38190	38140
39341	39164	39054	39411	39274	39164	38954	38911	38875	38884	38834	38780	38730	38680
39881	39704	39594	39951	39814	39704	39494	39451	39415	39424	39374	39320	39270	39220
40421	40244	40134	40501	40364	40254	40044	40001	39965	39974	39924	39870	39820	39770
40961	40784	40674	41031	40894	40784	40574	40531	40495	40504	40454	40400	40350	40300
41501	41324	41214	41571	41434	41324	41114	41071	41035	41044	40994	40940	40890	40840
42041	41864	41754	42121	41984	41874	41664	41621	41585	41594	41544	41490	41440	41390
42581	42404	42294	42651	42514	42404	42194	42151	42115	42124	42074	42020	41970	41920
43121	42944	42834	43201	43064	42954	42744	42701	42665	42674	42624	42570	42520	42470
43661	43484	43374	43731	43594	43484	43274	43231	43195	43204	43154	43100	43050	43000
44201	44024	43914	44271	44134	44024	43814	43771	43735	43744	43694	43640	43590	43540
44741	44564	44454	44811	44674	44564	44354	44311	44275	44284	44234	44180	44130	44080
45281	45104	44994	45351	45214	45104	44894	44851	44815	44824	44774	44720	44670	44620
45821	45644	45534	45901	45764	45654	45444	45401	45365	45374	45324	45270	45220	45170
46361	46184	46074	46431	46294	46184	45974	45931	45895	45904	45854	45800	45750	45700
46901	46724	46614	46971	46834	46724	46514	46471	46435	46444	46394	46340	46290	46240
47441	47264	47154	47511	47374	47264	47054	47011	46975	46984	46934	46880	46830	46780
47981	47804	47694	48051	47914	47804	47594	47551	47515	47524	47474	47420	47370	47320
48521	48344	48234	48591	48454	48344	48134	48091	48055	48064	48014	47960	47910	47860
49061	48884	48774	49131	48994	48884	48674	48631	48595	48604	48554	48500	48450	

**ECURIA E GJENDJES DEBITORE NDAJ OSHEE 31 DHJETOR 2009 - 31 Dhjetor 2021 ( 000 000 LEKË)**

	31.12.2009	31.12.2010	31.12.2011	31.12.2012	31.12.2013	31.12.2014	31.12.2015	31.12.2016	31.12.2017	31.12.2018	31.12.2019	31.12.2020	31.12.2021
<b>Buxhetore</b>	988	1,538	2,841	3,223	3,886	2,691	1,915	2,264	2,741	3,157	3,681	4,104	4,761
<b>Familjare</b>	18,953	27,366	38,104	45,304	52,313	55,591	52,802	51,583	50,756	48,111	46,641	46,765	46,521
<b>JoBuxhetore</b>	2,468	2,269	3,516	3,688	5,026	2,964	2,981	5,776	7,904	9,183	10,947	13,641	15,720
<b>Privat</b>	4,033	7,086	8,738	9,138	10,149	10,161	11,105	11,098	11,447	11,446	11,304	11,100	11,393
<b>Total</b>	26,442	38,260	53,198	61,353	71,374	71,406	68,803	70,720	72,849	71,897	72,574	75,610	78,394

**ECURIA E GJENDJES DEBITORE NDAJ OPERATORIT TE SHPERNDARJES  
31 DHJETOR 2009 - 31 DHJETOR 2021 SIPAS KLIENTËVE  
( 000 000 LEKË)**





Dukshetore

Familjare

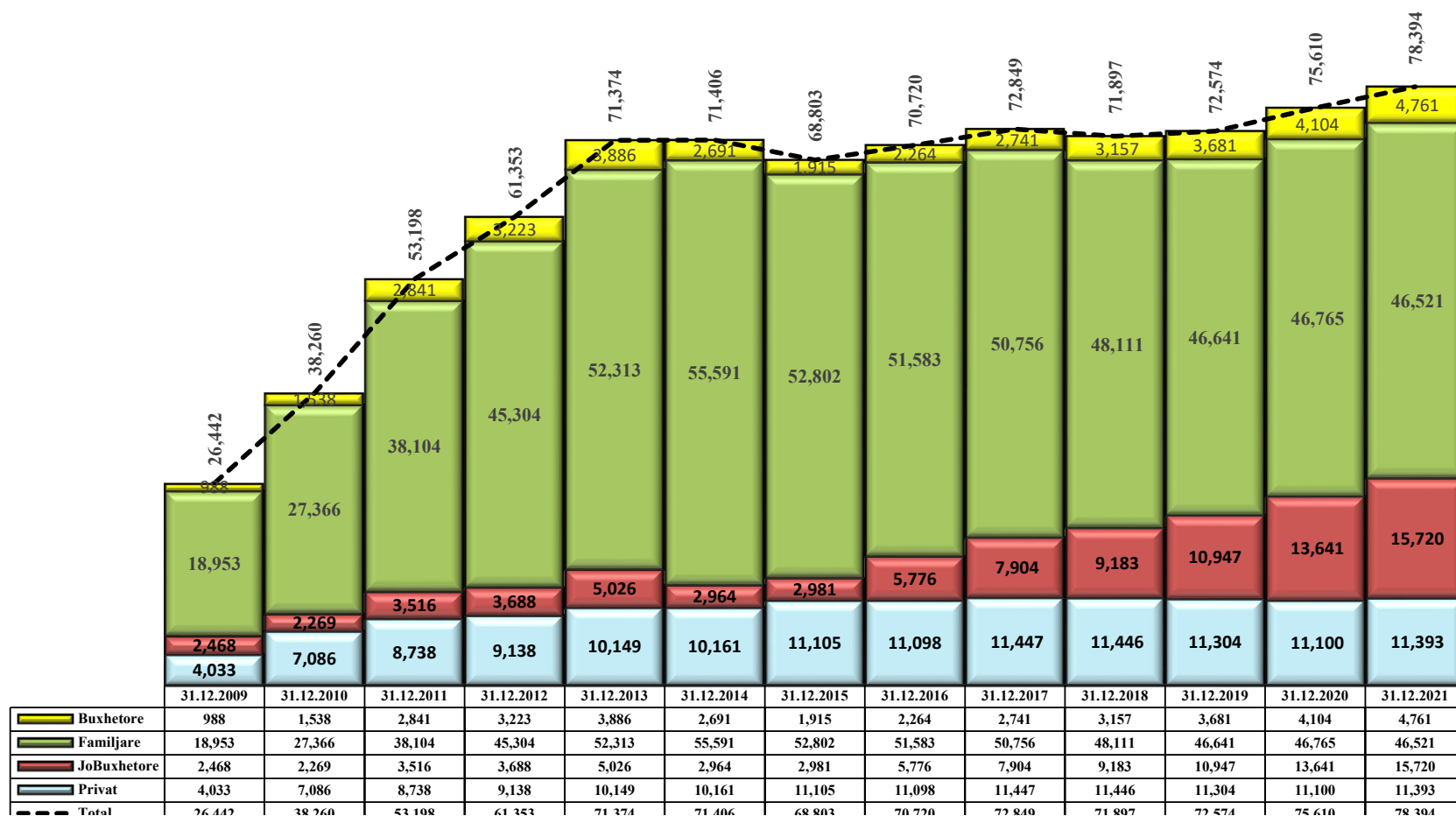
Jobdukshetore

Privat

Burimi OSHEE sha

	31.12.2009	31.12.2010	31.12.2011	31.12.2012	31.12.2013	31.12.2014	31.12.2015	31.12.2016	31.12.2017	31.12.2018	31.12.2019	31.12.2020	31.12.2021
Privat	4,033	7,086	8,738	9,138	10,149	10,161	11,105	11,098	11,447	11,446	11,304	11,100	11,393
JoBuxhetore	2,468	2,269	3,516	3,688	5,026	2,964	2,981	5,776	7,904	9,183	10,947	13,641	15,720
Familjare	18,953	27,366	38,104	45,304	52,313	55,591	52,802	51,583	50,756	48,111	46,641	46,765	46,521
Buxhetore	988	1,538	2,841	3,223	3,886	2,691	1,915	2,264	2,741	3,157	3,681	4,104	4,761
Total	26,442	38,260	53,198	61,353	71,374	71,406	68,803	70,720	72,849	71,897	72,574	75,610	78,394

**ECURIA E GJENDJES DEBITORE NDAJ OPERATORIT TE SHPERNDARJES  
31 DHJETOR 2009 - 31 DHJETOR 2021 SIPAS KLIENTËVE  
( 000 000 LEKË )**



---	10121	20,442	36,200	55,196	61,555	71,574	71,400	66,605	70,720	72,649	71,877	72,574	75,010	76,574
-----	-------	--------	--------	--------	--------	--------	--------	--------	--------	--------	--------	--------	--------	--------

**PERFORMANCA E OPERATOTRIT TE SHPERNDARJES 2009-2021 (%)**

<b>NIVELI I HUMBJEVE (%) 2009-2021</b>													
	Janar	Shkurt	Mars	Prill	Maj	Qershorr	Korrik	Gusht	Shtator	Tetor	Nentor	Dhjetor	
2009	40.75	37.05	38.05	32.93	33.44	30.75	32.60	30.20	25.34	30.67	33.44	36.89	
2010	38.62	35.41	36.90	31.37	35.17	31.45	26.94	29.69	21.47	20.61	22.16	29.05	
2011	55.55	38.00	36.95	23.11	24.85	21.29	21.88	19.41	22.95	25.15	32.20	35.70	
2012	35.72	59.16	55.23	45.41	38.87	39.77	45.51	45.51	42.09	35.53	41.89	49.32	
2013	51.12	48.71	48.29	39.66	39.52	40.33	43.33	38.50	35.08	45.98	48.08	53.04	
2014	47.00	42.14	42.78	35.69	36.85	34.10	36.59	36.36	31.67	34.52	32.88	37.54	
2015	36.68	31.82	32.88	30.54	31.24	28.60	30.62	29.29	25.30	29.92	30.82	34.50	
2016	34.69	29.00	29.93	26.07	26.97	24.35	25.97	25.15	22.12	27.11	29.30	30.99	
2017	33.50	27.63	28.66	25.81	25.88	28.31	24.69	23.29	19.79	23.76	23.55	27.90	26.41
2018	30.65	24.91	27.22	23.33	23.03	20.76	21.46	20.77	19.32	21.53	22.73	26.70	23.9
2019	29.25	23.21	26.5	21.36	22.10	19.92	20.42	19.81	17.54	20.40	21.58	24.76	21.79
2020	28.22	21.61	28.36	17.39	19.10	18.65	19.69	18.87	16.80	21.21	22.79	20.49	21.48
2021	27.87	20.1	25.92	21.08	17.92	18.34	18.75	17.93	16.22	18.56	19.88	20.25	20.62

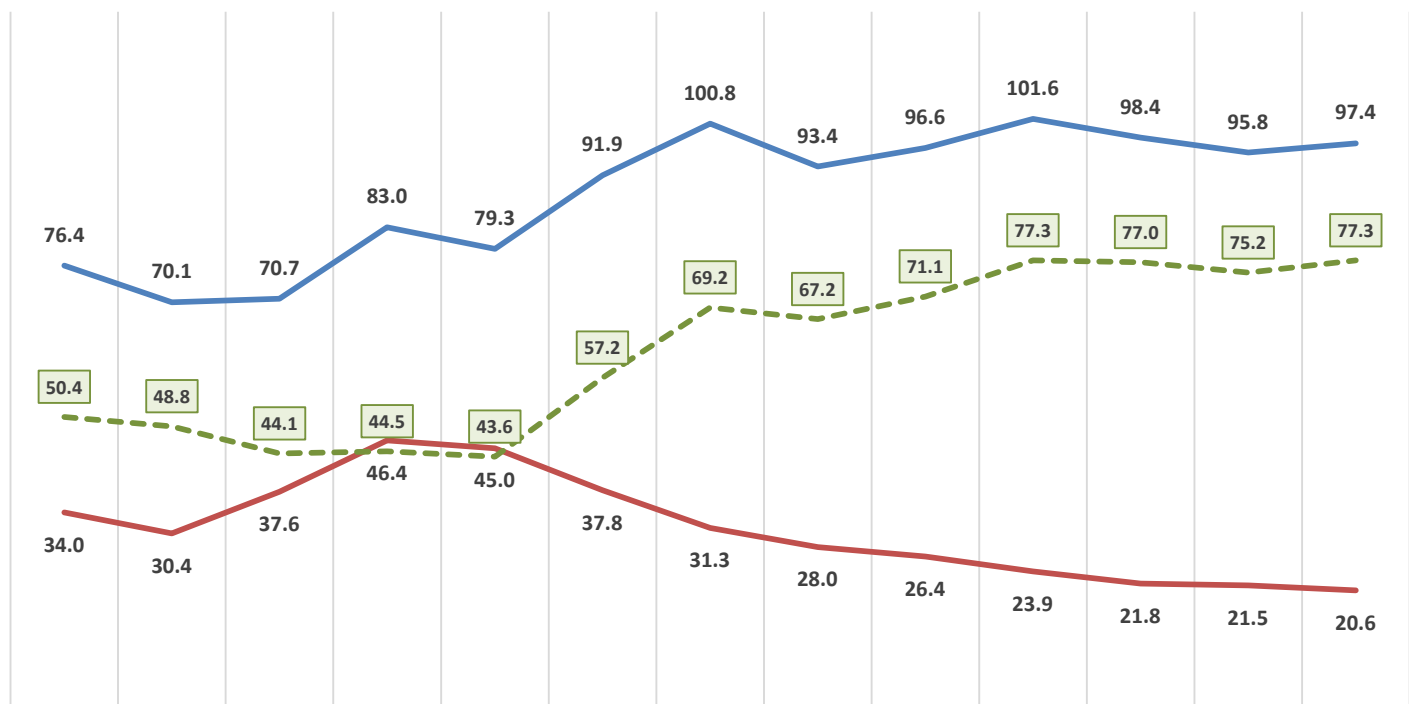
<b>Niveli i Arketimeve (%) 2009-2021</b>													
	Janar	Shkurt	Mars	Prill	Maj	Qershorr	Korrik	Gusht	Shtator	Tetor	Nentor	Dhjetor	
2009	69.32	85.95	74.38	86.58	86.31	76.37	75.40	72.46	83.20	80.82	61.77	70.01	
2010	55.37	66.28	86.63	89.46	86.70	79.42	74.84	124.98	84.20	70.81	56.15	66.48	
2011	67.26	57.61	87.66	71.61	96.73	73.00	65.00	81.00	66.00	63.86	51.47	87.30	
2012	59.80	79.20	78.50	78.00	94.70	83.50	91.60	102.90	74.00	98.00	72.60	78.00	
2013	61.40	63.70	86.20	80.70	79.10	69.60	87.90	90.10	78.50	84.30	89.00	102.00	
2014	84.90	77.10	85.90	85.50	81.90	80.20	86.70	83.60	102.60	101.00	101.90	141.00	
2015	112.70	120.50	103.70	86.60	95.70	97.10	98.40	104.70	95.30	100.30	92.20	100.70	
2016	92.10	87.00	95.60	90.10	99.10	92.00	94.20	96.70	91.50	96.70	90.30	96.70	
2017	85.20	87.60	105.70	94.50	105.70	91.80	104.80	97.40	94.60	103.80	92.70	100.10	96.6
2018	96.39	95.69	105.82	98.92	111.64	100.16	105.00	102.12	93.03	108.76	96.24	108.94	101.6
2019	90.7	92.6	99.8	102.4	102.50	94.00	104.40	99.30	93.90	104.70	89.60	110.70	98.4
2020	91.4	91.6	77.5	106.8	101.80	102.20	96.80	95.30	96.60	101.10	91.50	101.80	95.8
2021	86.4	88.9	102.1	91	101.20	110.70	96.90	94.10	90.70	114.70	96.90	101.50	97.4

<b>Efektiviteti i shitjeve (%) 2009-2021</b>													
	Janar	Shkurt	Mars	Prill	Maj	Qershorr	Korrik	Gusht	Shtator	Tetor	Nentor	Dhjetor	
2009	41.1%	54.1%	46.1%	58.1%	57.4%	52.9%	50.8%	50.6%	62.1%	56.0%	41.1%	44.2%	
2010	34.0%	42.8%	54.7%	61.4%	56.2%	54.4%	54.7%	87.9%	66.1%	56.2%	43.7%	47.2%	
2011	29.9%	35.7%	55.3%	55.1%	72.7%	57.5%	50.8%	65.3%	50.9%	47.8%	34.9%	56.1%	
2012	38.4%	32.3%	35.1%	42.6%	57.9%	50.3%	49.9%	56.1%	42.9%	63.2%	42.2%	39.5%	
2013	30.0%	32.7%	44.6%	48.7%	47.8%	41.5%	49.8%	55.4%	51.0%	45.5%	46.2%	47.9%	
2014	45.0%	44.6%	49.2%	55.0%	51.7%	52.9%	55.0%	53.2%	70.1%	66.1%	68.4%	88.1%	
2015	71.4%	82.2%	69.6%	60.2%	65.8%	69.3%	68.3%	74.0%	71.2%	70.3%	63.8%	66.0%	
2016	60.2%	61.8%	67.0%	66.6%	72.4%	69.6%	69.7%	72.4%	71.3%	70.5%	63.8%	66.7%	
2017	56.7%	63.4%	75.4%	70.1%	78.3%	65.8%	78.9%	74.7%	75.9%	79.1%	70.9%	72.2%	71.1%
2018	66.8%	71.9%	77.0%	75.8%	85.9%	79.4%	82.5%	80.9%	75.1%	85.3%	74.4%	79.9%	77.3%
2019	64.2%	71.1%	73.4%	80.5%	79.8%	75.3%	83.1%	79.6%	77.4%	83.3%	70.3%	83.3%	77.0%

<b>2020</b>	65.6%	71.8%	55.5%	88.2%	82.4%	83.1%	77.7%	77.3%	80.4%	79.7%	70.6%	80.9%	75.2%
<b>2021</b>	62.3%	71.0%	75.6%	71.8%	83.1%	90.4%	78.7%	77.2%	76.0%	93.4%	77.6%	80.9%	77.3%

	2009	2010	2011	2012	2013	2014	2015	2016	2017	2018	2019	2020	2021
Arketimi	76.4	70.1	70.7	83.0	79.3	91.9	100.8	93.4	96.6	101.6	98.4	95.8	97.4
Humbja	34.0	30.4	37.6	46.4	45.0	37.8	31.3	28.0	26.4	23.9	21.8	21.5	20.6
Efektiviteti	50.4	48.8	44.1	44.5	43.6	57.2	69.2	67.2	71.1	77.3	77.0	75.2	77.3

**Efektiviteti i shitjeve ne Sistemin e Shperndarjes (%)**  
2009-2021



	2009	2010	2011	2012	2013	2014	2015	2016	2017	2018	2019	2020	2021
Arketimi	76.4	70.1	70.7	83.0	79.3	91.9	100.8	93.4	96.6	101.6	98.4	95.8	97.4
Humbja	34.0	30.4	37.6	46.4	45.0	37.8	31.3	28.0	26.4	23.9	21.8	21.5	20.6
Efektiviteti	50.4	48.8	44.1	44.5	43.6	57.2	69.2	67.2	71.1	77.3	77.0	75.2	77.3

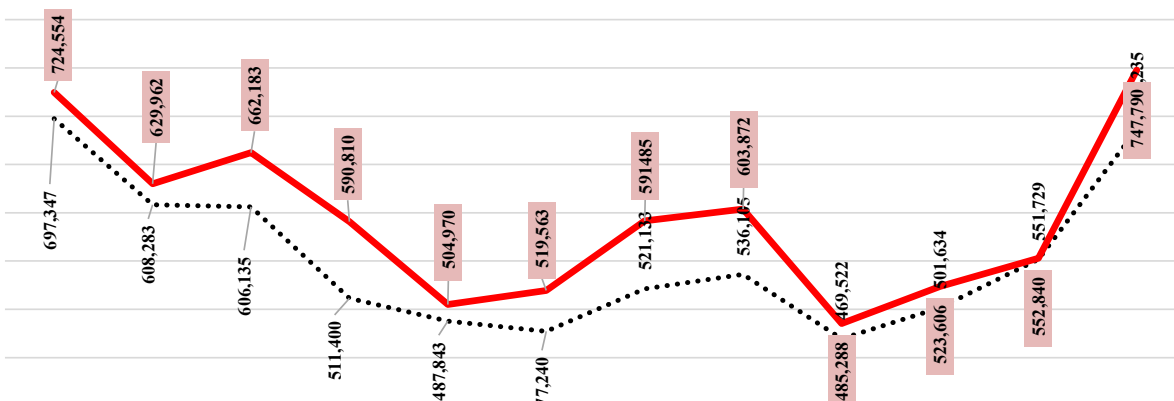
**Energji Totale ne Operatorin e Sistemit te Shperndarjes 2009-2021 ne MWh**

	Janar	Shkurt	Mars	Prill	Maj	Qershor	Korrik	Gusht	Shtator	Tetor	Nentor	Dhjetor	VITI
2009	644,987	568,719	589,279	462,709	448,118	427,694	467,863	493,772	439,604	489,635	557,554	639,797	6,229,731
2010	675,343	608,940	610,583	506,275	476,500	464,120	499,241	512,024	460,893	509,793	532,126	660,665	6,516,503
2011	708,264	623,208	634,087	536,286	533,564	495,139	545,315	567,282	512,979	551,132	619,655	710,870	7,037,781
2012	733,973	680,054	596,982	537,950	483,891	489,723	536,891	540,566	469,527	484,706	548,289	749,398	6,851,949
2013	743,846	665,392	673,578	545,600	502,945	511390	546,696	565,789	493,056	532,555	589,808	774,403	7,145,060
2014	733,468	631,678	645,837	578,948	541,016	501088	530,554	556,098	492,427	537,280	546,419	640,431	6,935,244
2015	686,041	591,978	594,775	514,282	472,405	465730	536160	529208	459012	476969	519281	649026	6,494,867
2016	671,884	559,772	573,419	469,803	477,468	463248	509916	514034	451153	480236	540024	688760	6,399,717
2017	715,886	562,270	545,214	493,731	475,055	485,386	529,805	543,145	451,103	482,629	546256	667841	6,498,322
2018	659,778	590,823	597,595	468,417	467,468	468,885	508,892	539,134	465,468	471,407	517,882	681,162	6,436,911
2019	735,813	586,992	559,331	500,485	501,061	500,729	533,842	565,788	471,684	472,833	507,920	639,953	6,576,432
2020	708,611	607,803	589,581	489,236	464,183	463,789	527,801	533,336	482,358	506,280	562,127	669,977	6,605,082
2021	724,554	629,962	662,183	590,810	504,970	519,563	591,485	603,872	485,288	523,606	552,840	747,790	7,136,936

	Janar	Shkurt	Mars	Prill	Maj	Qershor	Korrik	Gusht	Shtator	Tetor	Nentor	Dhjetor
Mesatarja	697,347	608,283	606,135	511,400	487,843	477,240	521,133	536,105	469,522	501,634	551,729	686,235
2021	724,554	629,962	662,183	590,810	504,970	519,563	591,485	603,872	485,288	523,606	552,840	747,790
Diferenca	27,207	21,679	56,048	79,410	17,127	42,323	70,352	67,767	15,766	21,972	1,111	61,555

**Burimi OSHEE sha**

**MESATARJA 10 VJEÇARE E ENERGJISË TOTALE NË RRJETIN E SHPËRNDARJES  
SIPAS MUAJVE TË VITIT (MWh)**



	Janar	Shkurt	Mars	Prill	Maj	Qershor	Korrik	Gusht	Shtator	Tetor	Nentor	Dhjetor
..... Mesatarja	697,347	608,283	606,135	511,400	487,843	477,240	521,133	536,105	469,522	501,634	551,729	686,235
— 2021	724,554	629,962	662,183	590,810	504,970	519,563	591,485	603,872	485,288	523,606	552,840	747,790

NR	KLIENTET E KUALIFIKUAR	KLIENTET NE TL "KUALIFIKUAR" PER VITIN 2021												
		Energjia e faturuar ne [MWh]												
		Janar	Shkurt	Mars	Prill	Maj	Qershor	Korrik	Gusht	Shtator	Tetor	Nentor	Dhjetor	Totali [MWh]
1	N/ST i GSA EL i ri 110kV-T1/694	9,128	8,183	9,056	8,709	9,029	7,922	5,496	0	0	0	0	0	57,522
2	N/ST i GSA EL 110kV-T2/960	0	0	0	0	0	0	6,576	16,424	16,713	17,578	17,054	17,330	91,675
3	TEC Ballsh	73	62	68	62	56	51	52	53	54	61	61	67	719
4	Titan T1,T2	8,210	4,226	11,668	11,488	11,470	9,223	7,117	10,749	8,838	10,542	10,891	4,949	109,372
5	FERROKROM	7,413	6,638	9,847	12,549	12,295	12,447	13,122	13,168	12,629	12,692	12,449	12,710	137,961
6	FUSHE KRUJE 220kV-T2/058	8,497	2,516	10,007	12,804	13,635	11,522	12,046	12,141	10,588	7,833	6,291	9,894	117,773
7	N/ST 220/6,3Colacent-T1/336	539	902	1,312	1,472	1,402	1,344	1,513	1,554	1,599	1,022	1,276	711	14,647
8	EL220-L220KURUM/338	31,422	24,419	13,837	33,251	35,512	33,794	33,860	31,829	30,991	27,996	29,727	12,082	338,718
9	Lajthiza T1/742	367	368	406	408	444	459	515	575	512	488	458	498	5,498
10	F.Arrez-T3/653	1,166	957	1,432	881	1,158	711	1,148	1,337	652	33	0	0	9,475
11	N/ST i AES EL 110kV-T1/690	7,374	6,447	7,060	7,050	7,370	6,874	7,426	7,415	7,114	7,398	7,111	7,079	85,719
12	N/ST I AES EL 110kV-T2/692	79	4,883	7,347	7,391	7,604	7,287	7,825	7,689	7,484	7,613	7,297	7,353	79,854
14	ENERGJI ASHTA ( ASHTA 1) Konsum	0	0	0	0	0	0	0	0	0	0	0	0	0
16	ENERGJI ASHTA ( ASHTA 2) Konsum	0	0	0	0	0	0	0	0	0	0	0	0	0
18	ENERGJI ULEZ ( ULEZ ) Konsum	0	1	1	0	0	14	28	34	31	34	37	1	183
20	ENERGJI SHKOPET ( SHKOPET ) Konsum	0	0	0	0	0	0	0	0	0	0	0	0	0
22	ENERGJI BISTRICE ( BISTRICE ) Konsum	0	0	0	0	0	0	0	0	0	0	0	0	0
24	ENERGJI PESHQESH ( AYEN ) Konsum	3	2	4	0	4	29	38	34	33	48	38	3	236
26	ENERGJI FANG ( AYEN ) Konsum	1	8	25	25	34	26	32	19	13	24	24	30	262
28	ENERGJI BANJA ( DEVOLL HPP) Konsum	6	2	11	13	16	25	20	24	21	24	19	7	188
30	ENERGJI HEC MOGLICE ( DEVOLL HPP) Konsum	5	14	1	4	0	22	14	0	24	61	1	2	149
	<b>Totali mujor</b>	<b>74,283</b>	<b>59,627</b>	<b>72,083</b>	<b>96,106</b>	<b>100,029</b>	<b>91,751</b>	<b>96,829</b>	<b>103,046</b>	<b>97,297</b>	<b>93,447</b>	<b>92,736</b>	<b>72,716</b>	<b>1,049,950</b>



**Devijimet ne Programin e Interkoneksionit 2021 (MWh)**

<i>Minus = Hyrje</i>			<i>Plus = Dalje</i>										
<b>Data</b>	Janar	Shkurt	Mars	Prill	Maj	Qershor	Korrik	Gusht	Shtator	Tetor	Nentor	Dhjetor	<b>2021</b>
<b>1</b>	55	2,277	178	63	195	145	34	25	5	-4	-91	-903	<b>1,980</b>
<b>2</b>	22	2,036	270	103	190	-20	155	-164	138	16	55	-1318	<b>1,483</b>
<b>3</b>	84	2,226	-10	118	235	90	638	-418	463	156	501	431	<b>4,514</b>
<b>4</b>	122	577	28	147	187	35	391	-493	419	189	452	-144	<b>1,910</b>
<b>5</b>	-569	769	45	55	125	30	65	-642	786	128	307	-916	<b>184</b>
<b>6</b>	41	21	215	63	103	107	-82	-445	367	521	228	-481	<b>659</b>
<b>7</b>	-6	555	127	-73	107	164	-180	495	434	83	234	-87	<b>1,854</b>
<b>8</b>	254	741	129	-121	45	127	203	382	403	110	316	-879	<b>1,710</b>
<b>9</b>	594	59	206	68	83	43	-145	0	143	-234	124	-438	<b>501</b>
<b>10</b>	537	436	110	-3	-16	71	273	-136	124	383	-15	-383	<b>1,381</b>
<b>11</b>	21	420	159	53	187	335	418	-362	319	634	55	-818	<b>1,421</b>
<b>12</b>	194	1,141	158	90	109	144	139	-277	257	173	-94	-291	<b>1,743</b>
<b>13</b>	-1,630	-480	122	125	905	537	28	-9	173	-260	-154	1016	<b>373</b>
<b>14</b>	-1,528	-245	197	140	637	21	68	89	20	242	-374	-111	<b>-845</b>
<b>15</b>	433	445	309	26	201	12	-78	243	31	368	-4	-370	<b>1,615</b>
<b>16</b>	265	377	307	103	67	-35	-189	400	215	393	30	340	<b>2,273</b>
<b>17</b>	-288	563	142	112	-173	72	376	-89	406	328	-171	210	<b>1,490</b>
<b>18</b>	693	225	129	199	334	115	760	24	614	-5	-184	-324	<b>2,582</b>
<b>19</b>	831	196	179	155	195	83	149	244	588	-7	-107	183	<b>2,687</b>
<b>20</b>	-178	35	171	148	168	193	174	427	601	158	-226	-207	<b>1,464</b>
<b>21</b>	781	46	201	104	215	-145	257	456	110	158	180	-1214	<b>1,148</b>
<b>22</b>	981	-14	123	176	335	-183	138	1097	120	40	-198	-1315	<b>1,300</b>
<b>23</b>	487	51	-85	90	119	-435	165	477	-188	47	-27	-694	<b>8</b>
<b>24</b>	208	164	290	190	329	73	209	9	310	594	-132	180	<b>2,423</b>
<b>25</b>	1,869	79	295	258	191	125	63	111	132	341	-233	987	<b>4,219</b>
<b>26</b>	1,588	265	211	238	258	93	139	451	179	-141	-135	642	<b>3,789</b>
<b>27</b>	1,946	220	282	199	293	684	-30	499	-6	58	730	318	<b>5,194</b>
<b>28</b>	602	293	180	252	164	60	-75	283	46	2	590	-279	<b>2,119</b>
<b>29</b>	119	0	369	207	116	178	-81	1165	-19	130	635	85	<b>2,903</b>
<b>30</b>	1,166	0	260	132	62	-27	-26	782	2	210	535	295	<b>3,391</b>
<b>31</b>	2,145	0	267	0	61	0	156	135		-141		240	<b>2,862</b>
<b>Total</b>	<b>11,839</b>	<b>13,479</b>	<b>5,562</b>	<b>3418</b>	<b>6,029</b>	<b>2,693</b>	<b>4,113</b>	<b>4,759</b>	<b>7,190</b>	<b>4669</b>	<b>2828</b>	<b>-6244</b>	<b>60,333</b>

**Burimi OST sha**

**Tabela me te dhenat e Alokimit te ATC 2021**

Ankandi	Periudha	Shqiperi - Mali Zi						Shqiperi - Greqi						Shqiperi - Kosove														
		ATC e ofruar ne Ankand		ATC e shitur ne Ankand		Crimi Ankandit		ATC e ofruar ne Ankand		ATC e shitur ne Ankand		Crimi Ankandit		ATC e ofruar ne Ankand		ATC e shitur ne Ankand		Crimi Ankandit										
		Export	Import	Export	Import	Export	Import	Export	Import	Export	Import	Export	Import	Export	Import	Export	Import	Export	Import									
		[ MW ]	[ MW ]	[ MW ]	[ MW ]	[ Euro/MWh ]	[ Euro/MWh ]	[ MW ]	[ MW ]	[ MW ]	[ MW ]	[ Euro/MWh ]	[ Euro/MWh ]	[ MW ]	[ MW ]	[ MW ]	[ MW ]	[ Euro/MWh ]	[ Euro/MWh ]									
Janar	01.01.2021-31.01.2021	100	100	100	100	0.15	4.77	150	150	150	150	0.84	1.28	200	200	200	200	0.30	0.77									
Shkurt	01.02.2021-28.02.2021	100	100	100	100	0.66	0.89	250	250	250	250	0.69	0.4	200	200	200	200	0.28	0.11									
Mars	01.03.2021-31.03.2021	113	100	113	100	6.01	0.68	250	259	250	257	4.75	0.15	82	55	82	55	4.88	0.21									
Prill	01.04.2021-04.04.2021	100	100	100	100	1.69	0.63	250	250	250	250	2.568	0.05	50	50	50	50	2.11	0.33									
	05.04.2021-07.04.2021	0	0	0	0			150		150		2.88																
	08.04.2021-09.04.2021	100	100	100	100	1.95	0.62	250		250		2.568																
	09.04.2021-30.04.2021																											
Maj	01.05.2021-02.05.2021	100	100	100	100	1.77	0.57	250	250	250	250	1.71	0.16	50	50	50	50	0.72	0.37									
	03.05.2021-04.05.2021							0		0		0								0								
	05.05.2021-07.05.2021							250		250		250								250			0	0	0	0		
	08.05.2021-16.05.2021							350		250		350								250	1.71	0.16	50	50	50	50	0.82	0.37
	17.05.2021-21.05.2021							250		250		250								250								
	22.05.2021-31.05.2021																											
Qershor	01.06.2021-30.06.2021	100	100	100	100	2.55	0.44	250	250	250	250	2.2	0.25	50	50	50	50	0.72	0.51									
Korrik	01.07.2021-31.07.2021	100	100	100	100	0.56	0.66	250	250	250	250	0.88	0.18	200	200	200	200	0.12	0.33									
Gusht	01.08.2021-31.08.2021	100	100	100	100	0.4	1.8	250	250	250	250	1.2	0.47	200	200	200	199	0.03	0.69									
Shtator	01.09.2021-06.09.2021	100	100	100	100	0.4	3.62	100	100	100	100	1.5	0.49	200	200	200	200	0.1	1.03									
	07.09.2021-08.09.2021							100		100		98		99	0.1	1.03												
	09.09.2021-19.09.2021							0		0		0		0	1.5	0.49	200	200	200	200	0.1	1.03						
	20.09.2021-24.09.2021							100		100		100		100	1.5	0.49												
	25.09.2021-26.09.2021							0		0		0		0	1.5	0.49												
	27.09.2021-30.09.2021							150		150		150		150	2.1	0.81												
01.09.2021-30.09.2021																												
Tetor	01.10.2021-31.10.2021	100	100	100	100	0.71	2.33	150	150	150	150	1.06	2.03	200	100	200	100	0.1	1.03									
	1.10.2021-10.10.2021							0		0		0								0	0.5	1.55						
	11.10.2021-17.10.2021							100		100		100								99	0.5	1.55						
	18.10.2021-31.10.2021							0		0		0								0	0.5	1.55						
Nentor	01.11.2021-30.11.2021	100	100	100	100	1.1	0.8	150	250	150	250	1.19	2.19	200	200	200	200	0.08	0.83									
	01.11.2021-14.11.2021							100		100		100								100	0.93							
	15.11.2021-21.11.2021							0		0		0								0	0.93							
	22.11.2021-30.11.2021							100		100		100								100	0.93							
Dhjetor	01.12.2021-30.12.2021	100	100	100	100	0.33	3.22	150	150	150	150	1.51	2.17	200	200	200	200	0.02	1.88									

**DISBALANCA 2021 (12 - MUJORI)**

Pale Përfundimtare Balancuese	JANAR		SHKURT		MARS		PRILL		MAJ		QERSHOR		KORRIK		GUSHT		SHTATOR		TETOR		NETOR		DHJETOR		Fatura me cmime nga Swisgrid për rastet kur cmimi i Energjisë Balancuese në Tregun tonë ka rezultuar 0 QERSHOR-DHJETOR 2021	TOTALI 2021			
	Ds. Negative [MWh]	Ds. Pozitive [MWh]	Ds. Negative [MWh]	Ds. Pozitive [MWh]	Ds. Negative [MWh]	Ds. Pozitive [MWh]	Ds. Negative [MWh]	Ds. Pozitive [MWh]	Ds. Negative [MWh]	Ds. Pozitive [MWh]	Ds. Negative [MWh]	Ds. Pozitive [MWh]	Ds. Negative [MWh]	Ds. Pozitive [MWh]	Ds. Negative [MWh]	Ds. Pozitive [MWh]	Ds. Negative [MWh]	Ds. Pozitive [MWh]	Ds. Negative [MWh]	Ds. Pozitive [MWh]	Ds. Negative [MWh]	Ds. Pozitive [MWh]	Ds. Negative [MWh]	Ds. Pozitive [MWh]		Ds. Negative [MWh]	Ds. Pozitive [MWh]	Ds. Negative [MWh]	Ds. Pozitive [MWh]
KURUM INTERNATIONAL	1,917	773	1,035	3,292	446	445	1,035	695	963	1,251	879	772	755	1,382	798	1,371	1,018	861	935	507	1,081	597	651	249	550	439	12,061	12,633	
DEVOLL HP	48	61	33	59	140	79	62	97	68	74	41	26	28	35	45	78	33	33	78	41	48	52	370	60	9	17	1,038	694	
ENERGIA GAS & POWER ALBANIA	1,237	664	775	128	1,438	98	1,305	84	1,562	109	1,080	458	1,816	185	2,493	68	2,384	334	4,795	224	1,214	152	954	462	1,536	151	22,589	3,122	
AVENAS ENERGJI	1,236	335	552	198	1,23	95	80	126	63	184	24	66	17	49	23	45	16	101	6	71	82	86	74	21	13	2,392	1,153		
GSA	637	1,648	195	742	1,198	751	1,034	1,016	1,122	1,863	1,355	2,001	2,018	1,511	2,149	1,283	1,000	1,312	1,136	1,406	1,333	235	877	1,427	1,126	900	15,161	16,095	
Albanian Energy Supplier AES	1,906	52	2,850	151	2,431	141	1,198	160	1,496	476	1,586	119	2,115	117	2,109	118	2,043	94	1,623	248	1,667	154	1,668	343	1,407	61	24,097	2,235	
Energji ASHTA	526	348	207	245	694	534																					1,427	1,127	
KESH (PPB)	4	107	5,167	69	2	97																					5,173	273	
<b>KESH GRUP BALANCI (KESH &amp; ASHTA)</b>							5,897	2,444	882	7,520	1,271	4,438	1,367	3,992	485	4,257	310	2,665								205	3,236	10,418	28,552
Furnizuesi i Tregut të Lirë FTL (OSHEE Grup)	8,442	45,100	6,902	30,386	7,862	32,239	7,671	29,002	3,129	19,453	4,722	10,121	3,650	13,865	3,252	15,903	1,646	10,184	4,435	17,410	3,447	21,434	7,730	30,866	2,725	10,467	65,613	286,429	
EZ-5 ENERGY	365	98	168	187	237	21	82	93	260	124	407	17	342	30	437	35	585	2								217	5	3,098	611
BVLIS Tce Balsh (Pa kontrate Furnizimi)	73		62		68		62		56		51		52		53		54		61		54		67			44		756	78
ENER TRADE sh.p.k.																													
KOSTI	6,990	6,725	6,884	4,750	4,179	6,915	1,391	11,620	4,924	7,620	4,215	6,507	4,552	5,008	5,209	6,385	7,304	3,071	3,772	7,542	3,414	10,842	1,158	15,239	3,073	4,793	57,067	97,017	
OST - HUMBLET	7,477	826	7,581	409	1,015	4,124	10,082		7,027	33	594	4,087	2,481	468	2,884	1,109	636	1,949								1,303	717	41,081	13,722
<b>Disbalancat mujore [MWh]</b>		25,804		8,277		25,706		15,439		17,041		12,266		7,382		10,643		3,418		10,447		21,210		35,158		8,576		201,369	

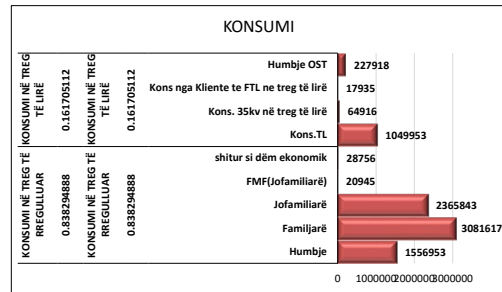
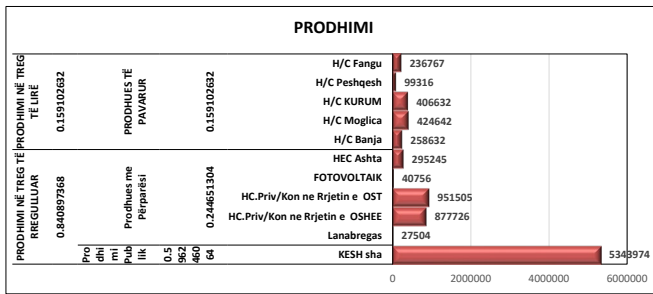
Ofruesi i Sherbimit te Balancimit	Ujje Gjenerimi [MWh]	Rritje Gjenerimi [MWh]	Ujje Gjenerimi [MWh]	Rritje Gjenerimi [MWh]	Ujje Gjenerimi [MWh]	Rritje Gjenerimi [MWh]	Ujje Gjenerimi [MWh]	Rritje Gjenerimi [MWh]	Ujje Gjenerimi [MWh]	Rritje Gjenerimi [MWh]	Ujje Gjenerimi [MWh]	Rritje Gjenerimi [MWh]	Ujje Gjenerimi [MWh]	Rritje Gjenerimi [MWh]	Ujje Gjenerimi [MWh]	Rritje Gjenerimi [MWh]	Ujje Gjenerimi [MWh]	Rritje Gjenerimi [MWh]	Ujje Gjenerimi [MWh]	Rritje Gjenerimi [MWh]	Ujje Gjenerimi [MWh]	Rritje Gjenerimi [MWh]	Ujje Gjenerimi [MWh]	Rritje Gjenerimi [MWh]	Ujje Gjenerimi [MWh]	Rritje Gjenerimi [MWh]			
KESH sh.a. OSHB	39,180	20,968	25,929	8,493	33,615	8,926	48,133	53,776	18,228	10,506	13,322	3,180	9,757	5,334	7,553	4,614	7,487	2,879	8,836	5,588	12,196	6,378	11,561	1,495			235,797	132,138	
DEVOLL HP OSHB							401	85	1,851	1,464	73	49	92		150	293	198	70			6						2,770	3,069	
AVENAS ENERGJI OSHB											27	23															27	40	
KURUM INTERNATIONAL OSHB																													
<b>Energji Balancuese mujore [MWh]</b>		(18,211)		(17,436)		(24,689)		5,327		(8,112)		(10,147)		(4,515)		(2,796)		(4,737)		(3,248)		(5,824)		(8,951)					(103,338)

Regjistri Pjesmarresve te Tregut (fund viti 2021)		PRODHUES		P
		TREGTUES		T
		FURNIZUES		F
		FURNIZUES I SHËRBIMIT UNIVERSAL		FSHU
		SHPERNDARJE		SH
Nr	Emri i Subjektit	EIC Code	data e regjistrimit	Roli ne TEE
1	Albanian Energy Supplier	54X-AEG-02-1603G	26.05.2015	T; F
2	AXPO Albania	23X--150330-AA-K	28.1.2020	T
3	Ayen AS Energji	23X--150416-A--N	17.12.2014	P; T; F
4	Ayen Energy Trading	23X--140426-AY-W	04.05.2014	T; F
5	Devoll Hydropower	23X--150409-DHP5	11.06.2015	T; F
6	Energji Ashta	54X-HECASHTA-059	25.05.2012	P
7	Energy Supply-AL	54X-ES-AL 00012Y	15.05.2013	T; F
8	GEN-I Tirana	23X---120709GEN0	31.01.2011	T; F
9	Green Energy Trading Albania	23X--150702GE--3	01.07.2015	T
10	Grupi Sistemeve Automatike	22XGSA-----N	09.05.2011	T; F
11	Korporata Elektroenergjitike Shqiptare	23X--130918APC-M	25.04.2011	P; T
12	KURUM International	23X--131115KI--1	17.12.2013	P; T; F
13	NOA Energy Trade	23X--150630-NE-6	10.03.2015	T;
14	Operatori i Sistemit të Shpërndarjes - OSSH sh.a.	54X-101010ISSOU	19.02.2020	SH
15	Stravaj Energy	54X-STRAVAJ-E086	25.04.2014	P; T
16	WENERG	54X-WENERG---10E	10.06.2015	P
17	Grid Energy	54X-GRID-ENERGYR	05.04.2017	T; F
18	Energy Financing Team Tirana	54X-EFT-TIRANA-V	24.08.2017	T; F
19	Alpiq Energy Albania	23X--141204AEA-T	29.04.2011	T; F
20	URADRIN	54X-100ID101218J	10.08.2018	F
21	Energia Gas and Power Albania shpk	23x-150309-LT-Y	22.10.2018	T; F
22	RENRGY Trading Group	54X-10IRN102618R	12.11.2018	T,F
23	Ener Trade shpk	54X-10 IET091118	21.12.2018	T; F
24	Power and Gas Operations	54X-10IPG2307196	23.07.2019	T
25	ENSCO Trading (Albania) sh.p.k	54X-110IESA1019G	02.12.2019	T
26	KESH sh.a	23X--130918APC-M	16.12.2019	F
27	Furnizuesi i Tregut të Lirë - FTL sh.a.	54X-1010IFT0220P	19.02.2020	T; F
28	Furnizuesi i Shërbimit Universal - FSHU sh.a.	54X-0101IFSH022Q	19.02.2020	F
29	EZ-5 Energy shpk	54X-11LKE250319U	25.03.2019	T;F
30	Hec Arsti shpk	54X-L-101H11A-IJ	27.03.2021	P
31	Hec Lengarica & Energy shpk	54X-L-1010H-LENU	09.07.2021	P
32	Info-Telecom	54X-1-1100-INFTI	06.08.2021	T
33	Tirana International Development	54X-1-0101-TID-F	06.08.2021	T
34	Teodori 2003	54X-110-TE-ALU	13.08.2021	P
35	Diteko shpk	54-L-10101DIT-Y	13.09.2021	T;P
36	S.P.E.Gjader shpk	54X-L-1010-GJADJ	18.10.2021	P
37	AlbESP Trading & Consulting shpk	54X-I-10101AESPF	17.12.2021	F;T
38	Hec Tervoli shpk	54X-1-210101HTEI	23.12.2021	P
39	Hec Bishnica 1,2 shpk	54X-1-10011HB12W	23.12.2021	P
40	NOA Energy Trade	23X--150630-NE-6	24.12.2021	F
41	Albanian Energy Supplier 2 shpk	54X-L-101AL-ES21	28.12.2021	T;F
42	Energjal shpk	54X-I-1111EN-ALF	31.12.2021	T;P
43	Euron Energy shpk	54X-I-0111EU-ENB	31.12.2021	T;P
44	Hydro-Seta shpk	54X-I-1111HS-015	31.12.2021	T;P
45	Alb-Energy shpk	54X-I-0101AI-EN3	31.12.2021	T;P
46	Future Energy AL	23X--150301-FE-3	06.03.2015	F
47	Danske Commodities Albania	23X--121120DCALG	30.10.2012	T
48	Energji Ashta			

TË DHËNA TË TREGUT TË ENERGJISË ELEKTRIKE PËR 6-Mujorin VITI 2021 NË RAPORT ME ENERGJINË E KONSUMUAR NË SHQIPËRI																																							
Prodhimi Vendas						8,962,699 MWh			(547,896) MWh			Konsumi Vëndas			8,414,836 MWh																								
PRODHIMI NË TREG TË RREGULLUAR						PRODHIMI NË TREG TË LIRË						KONSUMI NË TREG TË RREGULLUAR						KONSUMI NË TREG TË LIRË																					
84.1%						15.9%						83.8%						16.2%																					
Prodhimi Publik						Prodhues me Përparesi						PRODHUES TË PAVARUR						KONSUMI NË TREG TË RREGULLUAR						KONSUMI NË TREG TË LIRË															
59.6%						24.5%						15.9%						83.8%						16.2%															
KESH sha		Lanabregas		HC.Priv/Kon ne Rrjetin e OSHEE		HC.Priv/Kon ne Rrjetin e OST		FOTOVOLTAIK		HEC Ashta		H/C Banja		H/C Moglica		H/C KURUM		H/C Peshqesh		H/C Fangu		Humbje		Familjarë		Jofamiliarë		FMF (Jofamiliarë)		shitur si dëm ekonomik		Kons.TL		Kons. 35kv në treg të lirë		Kons nga Kliente te FTL ne treg të lirë		Humbje OST	
5,343,974		27,504		877,726		951,505		40,756		295,245		258,632		424,642		406,632		99,316		236,767		1,556,953		3,081,617		2,365,843		20,945		28,756		1,049,953		64,916		17,935		227,918	
59.6%		0.3%		9.8%		10.6%		0.5%		3.3%		2.9%		4.7%		4.5%		1.1%		2.6%		18.5%		36.6%		28.1%		0.2%		0.3%		12.5%		0.8%		0.2%		2.7%	
						BALLANCA Hyrje(+), Dalje (-)						BALLANCA						Hyrje/Dalje nga Interkoneksioni																					
																		-6.5%																					

ENERGJI E HYRË MINUS ENERGJI E DALË NGA PIKAT E INTERKONEKSIONIT PËR VITIN 2021 (MWh)...

-547,896







13	EFT (Energy Financing Team) TIRANA	Shkembime Cross-Border	AL-KS Kosovo - IN	0	0	-262	0	0	0	-1,636	-4,677	-3,040	-907	-4,014	-1,058	-15,594	
			AL-GR Greece - IN	-3,991	-932	-14,461	-1,142	-1,021	-3,344	-2,339	-1,231	-537	-904	-5,964	-1,503	-37,369	
			AL-KE Kosovo - IN	-9,365	-932	-15,540	-3,120	-1,021	-5,049	-5,021	-6,081	-5,476	-2,937	-11,466	-10,370	-76,378	
			AL-GR Greece - OUT	3,991	622	14,723	0	1,021	3,344	3,673	5,280	2,684	1,102	9,897	2,497	48,834	
			AL-KS Kosovo - OUT	0	150	0	1,142	0	145	142	0	0	550	91	4,107	6,327	
			AL-ME Monte Negro - OUT	5,374	160	817	1,978	0	1,560	1,206	801	2,792	1,285	1,478	3,766	21,217	
		<b>Total OUT</b>	<b>9,365</b>	<b>932</b>	<b>15,540</b>	<b>3,120</b>	<b>1,021</b>	<b>5,049</b>	<b>5,021</b>	<b>6,081</b>	<b>5,476</b>	<b>2,937</b>	<b>11,466</b>	<b>10,370</b>	<b>76,378</b>		
		Shitje FTL													0		
		Blerje AYEN Energy Trading														0	
		Shitje AES														0	
		<b>Total transaksione</b>	<b>0</b>	<b>0</b>	<b>0</b>	<b>0</b>	<b>0</b>	<b>0</b>	<b>0</b>	<b>0</b>	<b>0</b>	<b>0</b>	<b>0</b>	<b>0</b>	<b>0</b>	<b>0</b>	
		15	AES (Albanian Energy Supplier)	Shkembime Cross-Border	AL-GR Greece - IN	0	0	0	0	0	0	0	0	0	0	0	0
AL-KS Kosovo - IN	0				0	0	0	0	0	0	0	0	0	0	0	0	
AL-ME Monte Negro - IN	0				0	0	0	0	0	0	0	0	0	0	0	0	
<b>Total IN</b>	<b>0</b>				<b>0</b>	<b>0</b>	<b>0</b>	<b>0</b>	<b>0</b>	<b>0</b>	<b>0</b>	<b>0</b>	<b>0</b>	<b>0</b>	<b>0</b>	<b>0</b>	
AL-GR Greece - OUT	0				0	0	0	0	0	0	0	0	0	0	0	0	
AL-KS Kosovo - OUT	0				0	0	0	0	0	0	0	0	0	0	0	0	
AL-ME Monte Negro - OUT	0			0	0	0	0	0	0	0	0	0	0	0	0		
<b>Total OUT</b>	<b>0</b>			<b>0</b>	<b>0</b>	<b>0</b>	<b>0</b>	<b>0</b>	<b>0</b>	<b>0</b>	<b>0</b>	<b>0</b>	<b>0</b>	<b>0</b>	<b>0</b>		
Shitje Konsumatoreve te Kualifikuar	14,720			16,830	23,731	27,792	28,144	27,229	28,106	27,802	26,466	27,524	26,286	26,832	301,462		
Blerje Danske Commodities											-4,320				-4,320		
Shitje AYEN Energy Trading						304	24				42			370			
Shitje FTL														0			
Blerje GSA						-27,128		-28,106	-20,362	-14,946		-3,096		-93,638			
Blerje GENI												-1,344		-1,344			
Blerje Ener Trade	-14,720		-16,872	-23,735	-27,792	-1,488	-27,544	-7,440	-7,200	-27,568	-21,846	-26,832	-203,057				
Shitje Ener Trade			42	24		168	291							525			
Shitje NOA											2			2			
Blerje EFT TIRANA														0			
<b>Total transaksione</b>	<b>0</b>		<b>0</b>	<b>0</b>	<b>0</b>	<b>0</b>	<b>0</b>	<b>0</b>	<b>0</b>	<b>0</b>	<b>0</b>	<b>0</b>	<b>0</b>	<b>0</b>			
16	GETA (GREEN ENERGY TRADING ALBANIA)		Shkembime Cross-Border	AL-GR Greece - IN	-5,221	-155	-450	-9,301	-165	-11,483	-7,787	-49,934	-27,077	-25,117	-9,313	-50,213	-196,216
		AL-KS Kosovo - IN		0	0	0	0	0	0	0	0	0	0	0	0	0	
		AL-ME Monte Negro - IN		-2,285	-5,104	-8,262	-4,524	-8,040	-13,161	-14,742	-9,045	-1,133	-1,124	-7,407	-1,788	-76,615	
		<b>Total IN</b>		<b>-7,506</b>	<b>-5,259</b>	<b>-8,712</b>	<b>-13,825</b>	<b>-8,205</b>	<b>-24,644</b>	<b>-22,529</b>	<b>-58,979</b>	<b>-28,210</b>	<b>-26,241</b>	<b>-16,720</b>	<b>-52,001</b>	<b>-272,831</b>	
		AL-GR Greece - OUT		3,646	5,104	8,177	3,076	7,229	12,520	14,423	8,748	1,133	1,114	7,407	2,138	74,715	
		AL-KS Kosovo - OUT		0	0	0	0	0	0	0	37,624	14,104	13,901	4,730	40,767	111,126	
		AL-ME Monte Negro - OUT	1,025	155	450	11,032	100	11,142	4,802	12,607	12,415	9,684	4,583	9,446	77,441		
		<b>Total OUT</b>	<b>4,671</b>	<b>5,259</b>	<b>8,627</b>	<b>14,108</b>	<b>7,329</b>	<b>23,662</b>	<b>19,225</b>	<b>58,979</b>	<b>27,652</b>	<b>24,699</b>	<b>16,720</b>	<b>52,351</b>	<b>263,282</b>		
		Blerje AYEN Energy Trading													0		
		Blerje Ener Trade													0		
	Blerje ReNRGY Trading	-1,020												-1,020			
	Shitje ReNRGY Trading													0			
	Shitje GEN-I	28												28			
	Blerje GSA	-1,459			-3,501				-691					-350	-6,001		
	Shitje GSA	5,286		85	3,218	876	982	3,995		558	1,542			16,542			
	<b>Total transaksione</b>	<b>2,835</b>	<b>0</b>	<b>85</b>	<b>-283</b>	<b>876</b>	<b>982</b>	<b>3,304</b>	<b>0</b>	<b>558</b>	<b>1,542</b>	<b>0</b>	<b>-350</b>	<b>9,549</b>			
	17	ReNRGY	Shkembime Cross-Border	AL-GR Greece - IN	0	0	0	-11,469	-1	0	-2,271	0	-5,328	-3,632	-6,427	-1,741	-30,869
				AL-KS Kosovo - IN	0	0	0	0	-320	-535	0	-4,180	-1,176	-2,321	-2,310	0	-10,842
				AL-ME Monte Negro - IN	-25,074	0	-33,990	0	-228	-428	-18,215	-960	-2,934	-229	-4,895	-14,030	-100,983
				<b>Total IN</b>	<b>-25,074</b>	<b>0</b>	<b>-33,990</b>	<b>-11,469</b>	<b>-549</b>	<b>-963</b>	<b>-20,486</b>	<b>-5,140</b>	<b>-9,438</b>	<b>-6,182</b>	<b>-13,632</b>	<b>-15,771</b>	<b>-142,694</b>
AL-GR Greece - OUT				0	14,360	13,528	0	5,041	540	0	1,030	0	160	1,500	36,159		
AL-KS Kosovo - OUT				33,500	18,396	34,110	11,769	1,068	108	13,996	960	104	230	4,735	13,663	132,639	
AL-ME Monte Negro - OUT			5,537	11,360	0	1,050	320	315	0	0	0	0	0	0	18,582		
<b>Total OUT</b>			<b>39,037</b>	<b>44,116</b>	<b>47,638</b>	<b>12,819</b>	<b>6,429</b>	<b>963</b>	<b>13,996</b>	<b>960</b>	<b>1,134</b>	<b>230</b>	<b>4,895</b>	<b>15,163</b>	<b>187,380</b>		
Shitje OST															0		
Blerje FTL				-2,200	-264	-1,080									0		
Shitje FTL									6,710	4,180	7,944	6,512	5,482	304	31,132		
Blerje KESH		-14,983	-41,916	-13,384	-270	-5,880				-120				-480	-77,033		
Shitje KESH									260					784	1,044		
Shitje GSA										3,360				3,360			
Shitje GETA		1,020												1,020			
Blerje GETA														0			
Shitje EZ-5													3,255	3,255			
Blerje Danske Commodities									-480		-2,880	-560		-3,920			
<b>Total transaksione</b>		<b>-13,963</b>	<b>-44,116</b>	<b>-13,648</b>	<b>-1,350</b>	<b>-5,880</b>	<b>0</b>	<b>6,490</b>	<b>4,180</b>	<b>8,304</b>	<b>5,952</b>	<b>8,737</b>	<b>608</b>	<b>-41,142</b>			
18		ENERGIA GAS AND POWER ALBANIA	Shkembime Cross-Border	AL-GR Greece - IN	-5,952	0	0	-7,162	0	-3,070	-8,079	-1,389	0	-7,361		-33,013	
	AL-KS Kosovo - IN			0	0	0	0	0	0	0	0	0	0	0	0		
	AL-ME Monte Negro - IN			-3,878	-3,751	-10,990	0	-5,083	-6,724	-449	-9,634	-7,974	-144			-48,627	
	<b>Total IN</b>			<b>-9,830</b>	<b>-3,751</b>	<b>-10,990</b>	<b>-7,162</b>	<b>-5,083</b>	<b>-9,794</b>	<b>-8,528</b>	<b>-11,023</b>	<b>-7,974</b>	<b>-7,505</b>	<b>0</b>	<b>0</b>	<b>-81,640</b>	
	AL-GR Greece - OUT			0	0	0	0	0	820	269	384	0	0	0	0	1,473	
	AL-KS Kosovo - OUT			0	1,023	0	0	0	0	0	0	0	0	0	0	1,023	
	AL-ME Monte Negro - OUT		2,129	0	0	0	0	144	640	0	0	0	0	0	2,913		
	<b>Total OUT</b>		<b>2,129</b>	<b>1,023</b>	<b>0</b>	<b>0</b>	<b>0</b>	<b>964</b>	<b>909</b>	<b>384</b>	<b>0</b>	<b>0</b>	<b>0</b>	<b>0</b>	<b>5,409</b>		
	Shitje Konsumatoreve te Kualifikuar		8,217	4,093	10,990	10,858	10,890	9,594	7,619	10,639		7,748	11,546	6,079	98,273		
	Blerje Ayen Energy Trading														0		
	Blerje GSA							-339						-339			
	Blerje NOA											-11,546	-6,079	-17,625			
	Blerje Ener Trade	-516	-1,365	-3,696	-5,807	-425				-786	-272			-12,867			
	Shitje Ener Trade										29			29			
	<b>Total transaksione</b>	<b>7,701</b>	<b>2,728</b>	<b>10,990</b>	<b>7,162</b>	<b>5,083</b>	<b>8,830</b>	<b>7,619</b>	<b>10,639</b>	<b>-786</b>	<b>7,505</b>	<b>0</b>	<b>0</b>	<b>98,273</b>			
	20	EZ-5 ENERGY	Shkembime Cross-Border	AL-GR Greece - IN												0	
				AL-KS Kosovo - IN													0
				AL-ME Monte Negro - IN													0
				<b>Total IN</b>	<b>0</b>	<b>0</b>	<b>0</b>	<b>0</b>	<b>0</b>	<b>0</b>	<b>0</b>	<b>0</b>	<b>0</b>	<b>0</b>	<b>0</b>	<b>0</b>	
				AL-GR Greece - OUT													0
AL-KS Kosovo - OUT																0	
AL-ME Monte Negro - OUT															0		
<b>Total OUT</b>			<b>0</b>	<b>0</b>	<b>0</b>	<b>0</b>	<b>0</b>	<b>0</b>	<b>0</b>	<b>0</b>	<b>0</b>	<b>0</b>	<b>0</b>	<b>0</b>			
Shitje Konsumatoreve te Kualifikuar			1,105.7	2,123.8	2,598.1	2,124.1	2,353.6	1,936.5	1,473.0	1,311.0	432.5	162.5	91.5	247.9	15,960.2		
Shitje FTL												8,800.0	8,082		16,882.0		
Blerje ReNRGY														-3,255.0			
Blerje Ayen Energy Trading											-8,800.0	-4,827		-13,627.0			
Blerje AYEN AS Energji		-1,105.7	-2,123.8	-2,598.1	-2,124.1	-2,353.6	-1,936.5	-1,473.0	-1,311.0	-432.5	-162.5	-91.5	-247.9	-15,960.2			
<b>Total transaksione</b>		<b>0</b> </															



		Transaksionet e brendshme	-										0				
		Total transaksione	0	0	0	0	0	0	0	0	0	0	0	0	0	0	
22	ENER TRADE	Shkembime Cross-Border	AL-GR Greece - IN	-19,293	-90	0	-11,374	-84	-7,550	-3,399	-10,788	-21,398	-27,729	-34,754	-4,489	-140,948	
			AL-KS Kosovo - IN	-1,190	0	-2,435	-15,201	-67,174	-57,880	-19,307	-7,251	-10,405	-25,444	-32,281	-2,769	-241,337	
			AL-ME Monte Negro - IN	-7,976	-2,373	-1,486	-8,289	-1,488	-2,149	-3,387	-5,240	-5,520	-11,823	-12,030	-17,834	-79,959	
			Total IN	-28,459	-2,463	-3,921	-34,864	-68,746	-67,579	-26,093	-23,279	-37,323	-64,996	-79,065	-25,032	-461,880	
			AL-GR Greece - OUT	11,675	11,937	33,436	5,442	65,804	32,089	21,370	563	2,965	5,898	5,020	7,032	203,231	
		AL-KS Kosovo - OUT	10,454	1,075	13,563	12,776	21,555	14,774	1,057	696	1,950	675	1,210	17,913	97,698		
		AL-ME Monte Negro - OUT	15,142	1,574	0	24,600	28,915	7,958	510	1,662	0	830	1	158	81,350		
		Total OUT	37,271	14,586	46,999	42,818	116,274	54,821	22,937	2,921	4,915	7,403	6,231	25,103	382,279		
		Transaksionet e brendshme	Shitje FTL	1,488	1,344	1,486	1,440	1,488	1,440	10,748		23,808					43,242
			Blerje FTL		-1,320		-3,960	-13,480	-9,360								-28,120
			Shitje OST	3,087											539		3,626
			Shitje GETA														0
			Blerje KESH	-25,680	-17,466	-28,438	-28,820	-44,834	-11,620	-500						-2,592	-169,950
			Shitje KESH								200					1,190	2,000
			Shitje AES	14,720	16,872	23,755	27,792	1,488	27,544				7,200	27,568	21,846	26,832	195,617
			Blerje AES		-42	-24		-168	-291								-525
			Blerje GSA										-3,360				-3,360
			Shitje Energia Gas and Power	516	1,365		3,696	5,807	425				786	272			12,867
			Shitje Ayen Energy Trading	1,273	3,805	8,189	4,535										17,802
			Shitje KURUM	8,576					6,464	1,200				912			4,386
			Blerje KURUM	-7,473	-10,993	-46,809	-11,197										-9,065
			Shitje Danske	792	23			2,219	62	1,404							4,500
			Blerje Danske			-40				-456		-7,200	-14,746	-20,813	-12,320	-28	-55,603
			Blerje Power and Gas Operator											-29			-29
			Blerje Energia Gas and Power													-17,920	-2,000
			Blerje GENI														-10,964
			Blerje NOA Energy Trading								-2,456	-8,508					1,800
			Shitje AXPO			360		1,440									4,218
			Shitje Kurum International														4,218
			Blerje INFO Telecom sh.p.k.(INFO TELECOM)										-5				-5
			Shitje INFO Telecom sh.p.k.(INFO TELECOM)										18,160	36,466	37,743	2,240	94,609
			Blerje TIRANA INTERNATIONAL DEVELOPMENT sha.(TID)									-1					-1
		Shitje TIRANA INTERNATIONAL DEVELOPMENT sha.(TID)										8,600	24,392	48,666	16	81,674	
		Blerje Ayen Energy Trading	-6,114	-5,783	-1,557	-1,440	-1,488	-1,450	-7,440	-11,040	-8,040	-11,175	-11,128	-21,800	-88,455		
Total transaksione	-8,815	-12,195	-43,078	-7,954	-47,528	12,758	3,156	-26,754	32,408	57,593	72,834	-11	32,414				
23	TIRANA INTERNATIONAL DEVELOPMENT sha.(TID)	Shkembime Cross-Border	AL-GR Greece - IN												0		
			AL-KS Kosovo - IN													0	
			AL-ME Monte Negro - IN													0	
			Total IN	0	0	0	0	0	0	0	0	0	0	0	0	0	
			AL-GR Greece - OUT													0	
		AL-KS Kosovo - OUT													0		
		AL-ME Monte Negro - OUT													0		
		Total OUT	0	0	0	0	0	0	0	0	0	0	0	0	0		
		Transaksionet e brendshme	Blerje INFO Telecom sh.p.k.(INFO TELECOM)									-1	-16,320				-16,321
			Shitje INFO Telecom sh.p.k.(INFO TELECOM)											9,520			9,520
Shitje Ener Trade									1						1		
Blerje Ener Trade										-8,600	-24,392	-48,666	-16	-81,674			
Shitje FTL										24,920	24,392	39,146	16	88,474			
Total transaksione	0	0	0	0	0	0	0	0	0	0	0	0	0	-6,800			
24	INFO Telecom sh.p.k.	Shkembime Cross-Border	AL-GR Greece - IN												0		
			AL-KS Kosovo - IN													0	
			AL-ME Monte Negro - IN													0	
			Total IN	0	0	0	0	0	0	0	0	0	0	0	0	0	
			AL-GR Greece - OUT													1,920	
		AL-KS Kosovo - OUT													0		
		AL-ME Monte Negro - OUT													0		
		Total OUT	0	0	0	0	0	0	0	0	0	0	0	0	1,920		
		Transaksionet e brendshme	Blerje Ener Trade									-6	-18,160	-36,466	-37,743	-2,240	-94,615
			Shitje Ener Trade									5					5
Shitje FTL										1,840	36,466	47,263	320	85,889			
Blerje TIRANA INTERNATIONAL DEVELOPMENT sha.(TID)												-9,520		-9,520			
Shitje TIRANA INTERNATIONAL DEVELOPMENT sha.(TID)									1	16,320				16,321			
Total transaksione	0	0	0	0	0	0	0	0	0	0	0	0	-1,920	-1,920			
25	KESH sh.a.	Shkembime Cross-Border	AL-GR Greece - IN								0	0	0		-570		
			AL-KS Kosovo - IN			-706						0	0	0		-706	
			AL-ME Monte Negro - IN								-268	-500	0	-1,033	-6,208	-8,009	
			Total IN	0	-706	0	0	0	0	-268	-500	0	-1,033	0	-6,778	-9,285	
			AL-GR Greece - OUT	2,802	8,860	1,459	28,250	39,144	11,824			0	0	0		92,339	
		AL-KS Kosovo - OUT	18,880	19,229	27,336	1,717	1,653	1,884			0	45	0		7,453		
		AL-ME Monte Negro - OUT	0	18,376	26,467	33,509	35,200	14,242			2,100	240	1,100		2,231		
		Total OUT	21,682	46,465	55,262	63,476	75,997	27,950	0	2,100	285	1,100	0	9,684	304,001		
		Transaksionet e brendshme	Shitje OST	20,440	11,145	12,750	15,965	18,395	14,485	12,946	9,008	1,917	9,681	3,419	130,151		
			Shitje Ayen Energy Trading	2,728	93	14,560	5,059	1,610	1,470		300	367			108		
			Shitje Danske Commodities	46,846	40,024	12,960	14,136	8,572	9,240	1,200			3,300				
			Shitje GEN-1	71,387	50,057	16,424	41,870	7,660			250		1,420				
			Shitje GSA	27,896	65,696	8,778	11,380	82,200	16,840	3,700	1,200						
			Shitje Ener Trade	25,680	17,466	28,438	28,820	44,834	11,620	500							
			Shitje NOA Energy	6,430	15,480		3,340	1,381	14,975	41,196	41,094		10,467				
			Shitje ReNRGY	14,983	41,916	13,384	270	5,880					120				
			Shitje AXPO			3,360	2,310										
			Blerje ENER TRADE								-200			-1,190	-2,000		
			Blerje Danske Commodities								-2,234	-1,358	-680	-1,885	-462		
			Blerje GSA								-510	-480		-560	-6,880		
			Blerje DEVOLL HIP														
			Blerje GEN-1								-2,100	-1,300	-1,460	-116	-1,255		
			Blerje NOA Energy						-8,605	-16,195	-28,952	-31,055	-30,209	-14,440			
			Blerje ReNRGY												-784		
			Total transaksione	195,950	251,172	109,049	119,935	159,497	55,835	27,365	21,827	-21,434	-1,317	-106	1,687	919,460	

**Shënime:**

1. Konsumatorët e kualifikuar për secilin subjekt ndryshojnë çdo muaj në varesi të kontratave të nënshkruara nga të dyja palët.
2. Shenja (-) është përdorur për energjinë që hynë në rrjet (blerje + import) ndërsa shenja (+) për energjinë që del nga rrjeti (shitje + eksport).
3. Çdo vlerë e sipërshtuar është e nominuar - me program (jo faktike me matje)

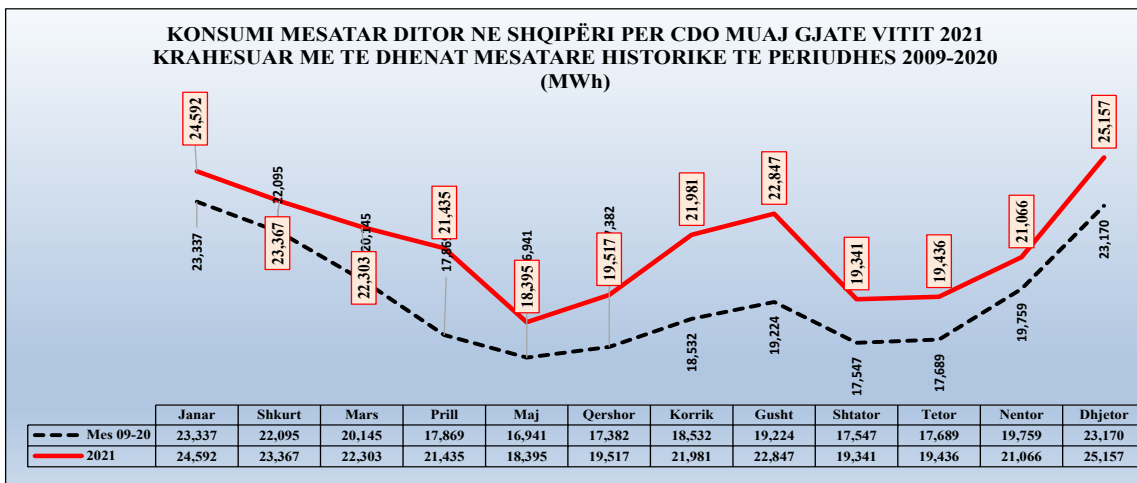
<b>Programi i imp/exp të FTL sha për vitin 2021</b>			
	Periudha	Import	Eksport
Janar 2021	01-31.01.2021	-1,488	0
Shkurt 2021	01-28.02.2021	-1,344	30,980
Mars 2021	01-31.03.2021	-1,486	11,050
Prill 2021	01-30.04.2021	-1,440	40,190
Maj 2021	01-31.05.2021	-1,488	84,480
Qershor 2021	01-30.06.2021	-1,440	17,070
Korrik 2021	01-31.07.2021	-58,577	0
Gusht 2021	01-31.08.2021	-245,448	0
Shtator 2021	01-30.09.2021	-271,448	0
Tetor 2021	01-31.10.2021	-258,470	0
Nëntor 2021	01-30.11.2021	-278,673	0
Dhjetor 2021	01-31.12.2021	-10,120	0
		<b>-1,131,422</b>	<b>183,770</b>

Transaksione të KESH sha gjatë vitit 2021													
	Janar	Shkurt	Mars	Prill	Maj	Qershor	Korrik	Gusht	Shtator	Tetor	Nëntor	Dhjetor	TOTALI MWh
Transaksione Hyrese ne Interkoneksion	0	-706	0	0	0	0	-268	-500	0	-1,033	0	-6,778	-9,285
Transaksione Dalese ne Interkoneksion	21,682	46,465	55,262	63,476	75,997	27,950	0	2,100	285	1,100	0	9,684	304,001
Tansaksione Shitje ne tregun e brendëshëm	195,950	251,172	109,049	119,935	168,102	72,540	61,331	55,540	10,915	15,684	9,681	18,455	1,088,354
Tansaksione Blerje ne tregun e brendëshëm	0	0	0	0	-8,605	-16,705	-33,966	-33,713	-32,349	-17,001	-9,787	-16,768	-168,894

Sasia e blere ne treg te pa rregulluar nga OST sha dhe FTL sha (MWh) per vitin 2021, vlerat përkaëse të blerjes dhe cmimi mesatar i ponderuara në (Euro/MWh)			
	Sasia (MWh)	Çmimi Mesatar Euro/MWh	Vlera pa TVSH (Euro)
OST sha	187,750	99.7	18,716,803
FTL sha	1,092,642	205.1	224,103,426
OSTsha+FTL sha	1,280,392	189.6	242,820,229

	Janar	Shkurt	Mars	Prill	Maj	Qershor	Korrik	Gusht	Shtator	Tetor	Nentor	Dhjetor
2009	21,481	20,969	19,660	16,082	15,241	15,242	16,186	16,937	15,754	17,015	19,911	22,124
2010	22,869	22,842	20,658	17,863	16,451	16,376	17,119	17,743	16,498	17,579	18,940	22,480
2011	23,779	22,978	21,055	18,313	17,452	17,112	18,159	19,056	17,784	18,408	21,356	23,440
2012	24,358	23,940	19,626	19,506	17,487	18,138	19,581	19,895	18,449	17,861	20,088	25,252
2013	25,170	24,999	22,871	19,289	17,938	18,928	19,673	19,731	18,267	18,790	21,346	26,372
2014	24,686	23,420	21,833	20,182	18,152	18,023	18,657	19,991	18,502	19,512	20,195	22,104
2015	22,173	20,912	19,248	16,710	16,558	16,893	18,766	19,010	17,174	15,677	17,955	21,512
2016	21,616	18,688	18,121	15,897	16,016	15,722	17,443	17,847	16,270	16,458	18,600	23,104
2017	24,259	20,737	18,514	17,819	16,817	18,341	19,251	19,889	17,269	17,901	20,088	22,340
2018	21,841	22,339	20,833	17,696	17,175	17,678	18,655	20,039	17,972	17,896	19,710	23,911
2019	24,237	21,447	19,915	18,634	17,790	18,826	19,752	20,954	18,076	16,781	17,933	21,668
2020	23,573	21,873	19,411	16,436	16,212	17,310	19,146	19,597	18,544	18,387	20,985	23,726
Mes 09-20	23,337	22,095	20,145	17,869	16,941	17,382	18,532	19,224	17,547	17,689	19,759	23,170

	Janar	Shkurt	Mars	Prill	Maj	Qershor	Korrik	Gusht	Shtator	Tetor	Nentor	Dhjetor
Mes 09-20	23,337	22,095	20,145	17,869	16,941	17,382	18,532	19,224	17,547	17,689	19,759	23,170
2021	24,592	23,367	22,303	21,435	18,395	19,517	21,981	22,847	19,341	19,436	21,066	25,157



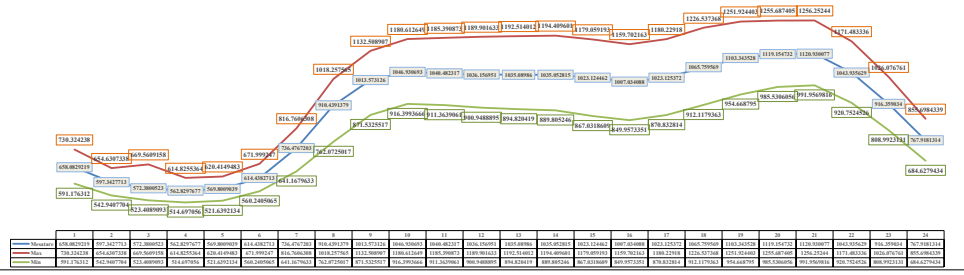
Janar	Average	704	621	584	571	577	630	769	986	1,143	1,209	1,220	1,219	1,222	1,223	1,200	1,195	1,232	1,311	1,328	1,315	1,282	1,175	1,030	846	24,552
Shkurt	Average	661	591	560	551	562	620	775	1,004	1,145	1,183	1,164	1,145	1,135	1,133	1,105	1,084	1,099	1,191	1,268	1,262	1,241	1,127	979	791	23,367
Mars	Average	622	563	535	528	549	602	767	964	1,099	1,122	1,094	1,073	1,065	1,063	1,052	1,032	1,084	1,095	1,209	1,230	1,223	1,106	928	744	22,303
Prill	Average	631	586	563	569	605	677	933	1,041	1,070	1,042	1,021	1,021	1,016	1,010	993	969	993	984	1,024	1,030	1,027	1,029	946	773	24,343
Maj	Average	587	541	524	525	527	561	667	802	872	896	887	880	876	866	843	816	815	831	856	886	947	908	803	678	18,335
Qershor	Average	626	571	549	539	547	583	689	816	894	934	934	945	945	946	921	896	895	907	923	928	971	966	866	734	19,517
Korrik	Average	718	655	627	613	615	646	743	874	973	1,023	1,042	1,062	1,079	1,082	1,037	1,032	1,043	1,057	1,057	1,064	1,069	965	808	23,981	
Gusht	Average	765	702	669	653	650	679	766	898	1,001	1,051	1,061	1,082	1,084	1,098	1,095	1,079	1,082	1,095	1,110	1,130	1,182	1,091	984	854	22,847
Shator	Average	613	574	558	551	559	595	691	833	909	926	912	912	910	904	907	890	891	905	941	1,010	983	893	790	684	19,341
Tetor	Average	602	554	553	529	537	582	685	839	916	911	921	909	899	897	889	879	879	921	1,034	1,056	1,015	922	806	687	19,336
Netor	Average	620	570	553	545	540	619	741	908	980	990	993	985	983	989	996	992	1,056	1,140	1,135	1,109	1,068	971	846	718	21,066
Dhjetor	Average	732	639	597	580	590	651	811	1,048	1,192	1,239	1,271	1,290	1,293	1,295	1,215	1,207	1,361	1,359	1,343	1,309	1,299	1,099	877	765	25,157
Mesatare		658	597	572	563	570	614	736	910	1,014	1,047	1,040	1,036	1,035	1,035	1,021	1,007	1,023	1,066	1,103	1,119	1,121	1,044	916	768	21,620

Janar	Max	801	694	655	644	653	723	922	1,208	1,363	1,424	1,419	1,408	1,416	1,425	1,397	1,373	1,421	1,509	1,559	1,539	1,359	1,178	1,140	962	28,589
Shkurt	Max	772	688	656	638	648	718	879	1,136	1,341	1,419	1,378	1,361	1,317	1,423	1,355	1,245	1,241	1,421	1,476	1,459	1,474	1,205	1,108	887	27,644
Mars	Max	694	628	602	589	606	687	888	1,134	1,238	1,234	1,251	1,287	1,300	1,310	1,314	1,287	1,282	1,313	1,393	1,394	1,357	1,239	1,052	843	26,038
Prill	Max	702	618	586	614	615	641	807	1,054	1,151	1,166	1,164	1,174	1,167	1,174	1,158	1,142	1,166	1,185	1,231	1,290	1,204	1,030	834	24,012	
Maj	Max	605	557	547	563	546	591	700	849	910	962	973	968	950	924	897	854	852	866	895	933	981	939	831	698	19,391
Qershor	Max	736	662	631	620	620	648	750	887	1,009	1,059	1,096	1,129	1,138	1,150	1,127	1,107	1,091	1,099	1,099	1,089	1,108	1,120	1,009	861	25,852
Korrik	Max	815	742	703	680	682	707	805	954	1,097	1,130	1,159	1,202	1,222	1,208	1,205	1,190	1,186	1,190	1,194	1,189	1,230	1,171	1,069	927	24,558
Gusht	Max	828	759	729	707	700	726	817	972	1,090	1,156	1,168	1,182	1,209	1,226	1,205	1,195	1,193	1,199	1,197	1,217	1,185	1,084	941	24,960	
Shator	Max	638	593	576	565	573	612	717	866	935	965	952	975	973	966	952	931	927	932	984	1,035	1,025	923	830	724	20,179
Tetor	Max	736	662	631	620	620	648	750	887	1,009	1,059	1,096	1,129	1,138	1,150	1,127	1,107	1,091	1,099	1,099	1,089	1,108	1,120	1,009	861	25,852
Netor	Max	687	620	592	583	599	663	810	996	1,089	1,133	1,185	1,166	1,160	1,174	1,189	1,197	1,276	1,349	1,352	1,340	1,308	1,196	1,106	874	24,573
Dhjetor	Max	832	700	647	614	627	707	916	1,223	1,379	1,404	1,403	1,385	1,389	1,357	1,340	1,351	1,443	1,544	1,536	1,531	1,501	1,400	1,206	969	28,381
Max		730	655	670	615	620	672	817	1,018	1,133	1,181	1,185	1,190	1,199	1,194	1,180	1,177	1,252	1,256	1,256	1,256	1,171	1,106	856	24,435	

Janar	Min	588	513	475	466	462	492	547	658	810	913	952	939	931	910	889	894	946	1,034	1,030	1,023	1,002	931	822	688	18,901
Shkurt	Min	593	540	514	508	515	566	674	856	972	1,009	985	948	949	940	899	879	917	1,011	1,152	1,149	1,127	1,022	858	705	20,279
Mars	Min	547	506	484	480	491	544	662	806	964	1,016	970	943	931	914	884	863	841	866	950	1,072	1,103	989	820	650	19,295
Prill	Min	602	554	543	545	543	563	643	774	898	898	861	848	834	819	846	814	802	817	846	896	937	889	807	681	18,187
Maj	Min	556	518	497	499	506	533	606	710	788	851	838	816	836	826	783	764	753	764	812	851	894	841	749	641	17,211
Qershor	Min	569	527	511	506	508	547	633	726	797	834	847	841	832	827	798	771	785	810	836	855	911	894	791	667	17,613
Korrik	Min	643	583	582	568	567	595	650	734	819	875	895	902	905	889	810	790	816	858	899	914	966	948	865	746	18,820
Gusht	Min	626	584	564	559	567	593	654	748	841	900	920	928	919	907	877	860	880	904	927	977	1,011	921	820	710	19,195
Tetor	Min	576	539	525	514	514	544	619	734	827	848	843	836	829	832	819	796	792	817	930	975	929	849	738	634	17,812
Netor	Min	565	523	509	504	519	568	662	792	876	877	860	842	832	848	853	863	910	1,001	989	964	930	843	739	635	18,503
Dhjetor	Min	662	591	565	551	557	605	700	867	1,029	1,116	1,095	1,095	1,105	1,112	1,101	1,102	1,105	1,139	1,181	1,170	1,140	1,051	942	796	22,496
Min		591	543	523	515	522	560	641	762	872	916	911	901	895	890	867	850	871	912	955	986	992	921	809	685	18,889

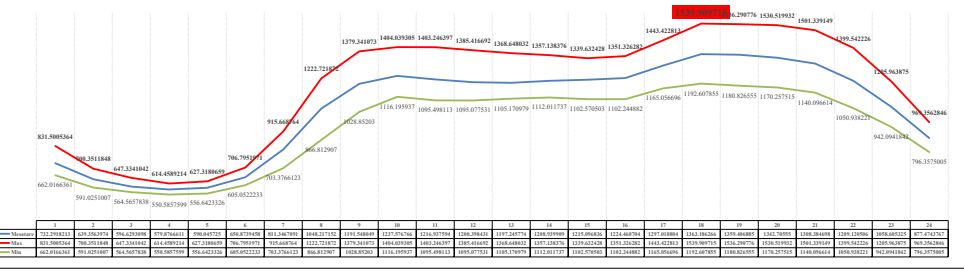
Mesatare	658	597	572	563	570	614	736	910	1,014	1,047	1,040	1,036	1,035	1,035	1,023	1,007	1,023	1,066	1,103	1,119	1,121	1,044	916	768	21,620
Max	730	655	670	615	620	672	817	1,018	1,133	1,181	1,185	1,190	1,199	1,194	1,180	1,177	1,252	1,256	1,256	1,256	1,171	1,106	856	24,435	
Min	591	543	523	515	522	560	641	762	872	916	911	901	895	890	867	850	871	912	955	986	992	921	809	685	18,889

PROFILI MESATAR DITOR ME BAZE ORARE I NGARKESES PER VITIN 2021 (MW)  
PIKU I NGARKESES  
NGARKESEMINIMALE ME 02.01.2021 ora 04:00 = 460 MW



Mesatare	732	639	597	580	590	651	811	1,048	1,192	1,238	1,217	1,200	1,197	1,209	1,215	1,224	1,297	1,363	1,359	1,343	1,308	1,209	1,059	877	25,157
Max	832	700	667	641	671	707	916	1,223	1,379	1,404	1,403	1,385	1,389	1,357	1,340	1,351	1,443	1,544	1,536	1,531	1,501	1,400	1,206	969	28,381
Min	602	591	565	551	557	605	700	867	1,029	1,116	1,095	1,095	1,105	1,112	1,101	1,102	1,105	1,139	1,181	1,170	1,140	1,051	942	796	22,496

PROFILI ME BAZE ORARE DHE PIKU I NGARKESES NE DHJETOR 2021 (MW)  
dte 22.12.2021 ORA 18:00



Janar	Average	704	621	584	571	577	630	769	986	1,143	1,209	1,220	1,219	1,222	1,223	1,200	1,195	1,232	1,311	1,328	1,315	1,282	1,175	1,030	846	24,552
Shkurt	Average	661	591	560	551	562	620	775	1,004	1,145	1,183	1,164	1,145	1,135	1,133	1,105	1,084	1,099	1,191	1,268	1,262	1,241	1,127	979	791	23,367
Mars	Average	622	563	535	528	549	602	767	984	1,099	1,152	1,094	1,073	1,065	1,063	1,050	1,032	1,084	1,095	1,209	1,230	1,223	1,106	928	744	22,305
Prill	Average	631	586	561	569	608	677	933	1,041	1,070	1,042	1,021	1,016	1,010	993	969	960	1,021	1,045	1,167	1,029	1,047	1,029	846	773	24,432
Maj	Average	587	541	524	525	527	561	667	802	972	896	887	880	876	866	843	816	815	831	856	886	947	908	803	678	18,335
Qershor	Average	626	571	549	539	547	583	689	816	894	924	934	945	946	921	896	895	907	923	928	971	911	866	866	734	19,517
Korrik	Average	718	655	627	613	615	646	743	873	973	1,023	1,043	1,062	1,079	1,082	1,067	1,037	1,082	1,043	1,057	1,057	1,060	1,069	965	828	21,981
Gusht	Average	763	702	669	653	650	679	786	898	1,001	1,051	1,061	1,082	1,094	1,098	1,095	1,079	1,082	1,095	1,110	1,130	1,102	1,091	984	854	22,847
Shator	Average	613	574	558	551	559	595	691	833	909	926	912	912	910	904	907	890	891	905	941	1,010	983	893	790	684	19,341
Tetor	Average	602	554	553	529	537	582	685	839	916	911	921	909	899	897	889	870	879	921	1,034	1,056	1,015	922	806	687	19,436
Netor	Average	620	570	553	545	540	619	741	908	980	990	993	985	983	989	996	992	1,056	1,140	1,135	1,109	1,068	971	846	738	21,066
Dhjetor	Average	732	639	597	580	590	651	811	1,048	1,192	1,270	1,271	1,209	1,197	1,200	1,215	1,200	1,297	1,361	1,359	1,345	1,308	1,209	1,099	877	25,127
Mesatare	Average	658	597	572	563	570	614	736	910	1,014	1,047	1,040	1,036	1,035	1,035	1,021	1,007	1,023	1,066	1,103	1,119	1,121	1,044	916	768	21,620

Janar	Max	801	694	655	644	659	723	922	1,208	1,363	1,424	1,419	1,408	1,416	1,425	1,397	1,373	1,421	1,509	1,559	1,539	1,509	1,378	1,190	962	28,589	
Shkurt	Max	772	688	656	638	648	718	878	1,136	1,341	1,419	1,378	1,360	1,417	1,423	1,355	1,341	1,421	1,476	1,459	1,474	1,395	1,188	887	716	22,644	
Mars	Max	694	628	602	589	605	687	888	1,134	1,238	1,234	1,251	1,287	1,300	1,310	1,314	1,287	1,282	1,313	1,393	1,394	1,357	1,239	1,052	843	26,038	
Prill	Max	702	618	586	614	615	641	807	1,054	1,151	1,166	1,164	1,174	1,167	1,174	1,158	1,142	1,166	1,185	1,231	1,290	1,204	1,030	834	674	24,012	
Maj	Max	605	557	547	563	546	591	700	849	910	962	973	968	950	924	897	854	852	866	895	933	981	939	831	698	19,391	
Qershor	Max	736	662	631	620	620	648	750	887	1,009	1,059	1,096	1,129	1,138	1,150	1,127	1,107	1,091	1,099	1,099	1,089	1,108	1,120	1,009	861	678	21,852
Korrik	Max	815	742	703	680	682	707	805	954	1,097	1,130	1,159	1,202	1,222	1,208	1,205	1,190	1,186	1,190	1,194	1,189	1,230	1,171	1,069	927	24,558	
Gusht	Max	828	759	739	707	700	726	817	972	1,090	1,156	1,168	1,192	1,209	1,226	1,205	1,195	1,193	1,199	1,197	1,217	1,185	1,084	941	676	21,960	
Shator	Max	638	593	576	565	573	612	717	866	935	965	976	975	973	966	952	931	927	932	984	1,035	1,025	923	830	724	20,179	
Tetor	Max	655	593	576	560	576	642	781	939	1,028	1,054	1,032	1,002	991	987	961	941	1,006	1,137	1,150	1,133	1,097	997	867	748	21,998	
Netor	Max	687	620	592	583	599	663	810	996	1,089	1,133	1,165	1,166	1,160	1,174	1,189	1,197	1,276	1,349	1,352	1,340	1,308	1,196	1,106	874	24,573	
Dhjetor	Max	832	700	647	614	627	707	916	1,223	1,379	1,404	1,403	1,385	1,369	1,357	1,340	1,351	1,443	1,544	1,536	1,531	1,501	1,400	1,206	969	28,381	
Max	730	655	670	615	620	672	817	1,018	1,133	1,181	1,185	1,190	1,199	1,194	1,180	1,180	1,227	1,252	1,256	1,256	1,256	1,171	1,026	856	24,435		

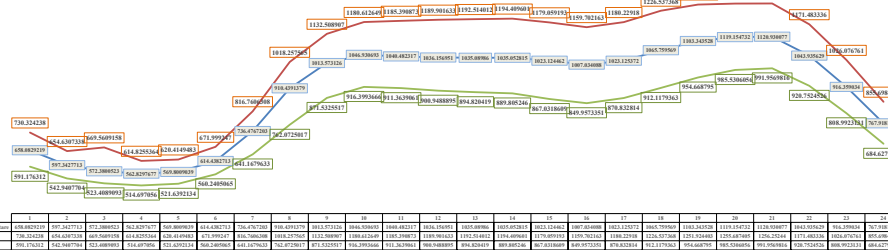
Janar	Min	588	513	475	464	462	492	547	658	810	913	952	939	931	910	889	894	946	1,034	1,030	1,023	1,002	931	822	688	18,901		
Shkurt	Min	593	540	514	508	515	566	674	856	972	1,009	985	948	949	940	899	879	910	1,011	1,152	1,149	1,127	1,022	858	705	20,279		
Mars	Min	547	506	484	480	491	544	662	806	964	1,016	970	943	931	914	884	863	841	866	950	1,072	1,103	989	820	650	19,295		
Prill	Min	602	554	543	545	563	643	771	898	898	861	843	848	849	846	811	802	817	846	896	967	989	907	681	618	19,187		
Maj	Min	556	518	497	499	506	533	606	710	788	831	838	836	836	836	806	782	763	812	851	894	841	749	641	611	17,211		
Qershor	Min	569	527	511	506	508	547	633	726	797	824	847	841	832	827	798	771	785	810	836	855	911	894	791	667	17,613		
Korrik	Min	643	583	582	568	567	595	650	734	819	875	895	902	895	889	810	790	816	858	899	914	966	948	885	766	18,820		
Gusht	Min	626	584	564	559	567	593	654	748	841	900	920	928	919	907	877	860	880	904	927	977	1,011	921	820	710	19,195		
Tetor	Min	576	539	535	534	531	531	531	531	531	531	531	531	531	531	531	531	531	531	531	531	531	531	531	531	531	531	531
Netor	Min	565	523	509	504	519	568	662	792	876	877	860	842	832	848	853	863	910	1,001	989	964	930	843	739	635	18,503		
Dhjetor	Min	662	591	565	551	557	605	700	867	1,029	1,116	1,095	1,095	1,105	1,112	1,101	1,102	1,105	1,199	1,181	1,170	1,140	1,051	942	796	22,496		
Min	591	543	523	515	523	560	641	762	872	916	911	901	895	890	867	850	871	912	955	986	992	921	809	685	18,889			

Mesatare	658	597	572	563	570	614	736	910	1,014	1,047	1,040	1,036	1,035	1,035	1,023	1,007	1,023	1,066	1,103	1,119	1,121	1,044	916	768	21,620
Max	730	655	670	615	620	672	817	1,018	1,133	1,181	1,185	1,190	1,199	1,194	1,180	1,180	1,227	1,252	1,256	1,256	1,256	1,171	1,026	856	24,435
Min	591	543	523	515	523	560	641	762	872	916	911	901	895	890	867	850	871	912	955	986	992	921	809	685	18,889

PROFILI MESATAR DITOR ME BAZE ORARE I NGARKESES PER VITIN 2021 (MW)

PIKU I NGARKESES NE JANAR 2021 (MW)

NGARKESA MINIMALE ME 02.01.2021 ORA 04:00 468 MW



Mesatare	732	639	597	580	590	651	811	1,048	1,192	1,238	1,217	1,200	1,197	1,209	1,215	1,224	1,297	1,363	1,359	1,343	1,308	1,209	1,059	877	25,127
Max	832	700	647	614	627	707	916	1,223	1,379	1,404	1,403	1,385	1,369	1,357	1,340	1,351	1,443	1,544	1,536	1,531	1,501	1,400	1,206	969	28,381
Min	591	543	523	515	523	560	641	762	872	916	911	901	895	890	867	850	871	912	955	986	992	921	809	685	18,889

PROFILI ME BAZE ORARE DHE PIKU I NGARKESES NE DHJETOR 2021 (MW)

di. 22.12.2021 ORA 18:00

