

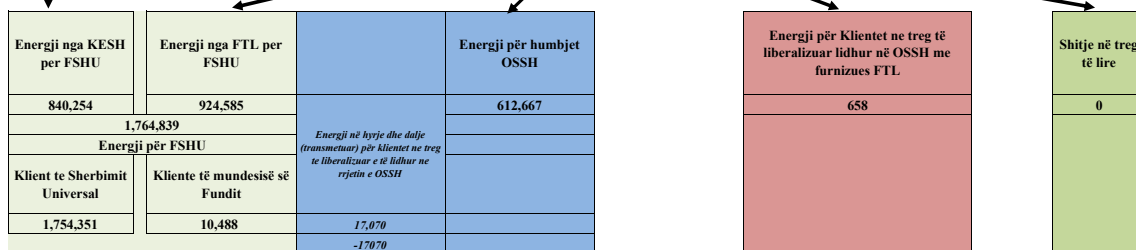
BILANCI ENERGJITIK 4-MUJORI 2020 (MWh)

Prodhimi neto publik		Prodhuar nga PPE në rrjetin e OSSH			Prodhuar nga PPE në rrjetin e OST		Prodhues të pavarur					Prodhim neto vendas
Prodhimi Neto KESH sha		Neto (Selit)	HC.Priv/Kon në Rrjetin e OSSH për FTL	FOTOVOLTAIK	HC.Priv/Kon në Rrjetin e OST për FTL	Neto Ashta	Neto Banjia	Neto Mogleka	Neto KURUM	H/C Peshqesh	H/C Fangu	
880,152		11,225	306,815	8,962	326,795	58,682	61,412	15,662	154,845	37,974	87,149	1,949,672

<i>Ballanca e shkëmbimeve në Interkoneksion.</i>	39,898
<i>Ballanca e shkëmbimeve të brend(pa OST,FTL/OSHEE) Group.</i>	
<i>Shitur OST për Humbje +konsum vetiak</i>	
<i>Konsumuar nga Tec Vlora</i>	
<i>Devijime nga Programi i Interkoneksionit</i>	
<i>Energji në shërbime</i>	
Energji për FSHU nga KESH sha	840,254

Energji e siguruar nga FTL					
Blerje Neto (Selit)	Blerje HC.Priv/Kon në Rrjetin e OSSH për FTL	Blerje FOTOVOLTAIK	Blerje HC.Priv/Kon në Rrjetin e OST për FTL	Blerje Neto Ashta	Blerje në Treg të Liberalizuar nga FTL
11,225	306,815	8,962	326,795	58,682	825,429
1,537,908					

Ballanca në interkoneksion (marrje)
713,442



KONSUMI VENDAS

Konsumi i klientëve Tarifore	1,754,351
Konsumi i klientëve të furnizuar si FMF	10,488
Konsumi i Klientëve që përdorin rrjetin për energjinë e blerë në treg të liberalizuar	17,070
Energji për Klientet në treg të liberalizuar lidhur në OSSH me furnizues FTL	658
Konsumi për mbulimin e humbjeve	612,667
Konsumuar nga Klientet e lidhur në OST	202,589
Konsumuar nga OST (humbje +nevoja vetiake)	65,003
Konsumuar Tec Ballshi	290
KONSUMI TOTAL 2020 (4-mujori)	2,663,116

Konsumi total vendas
2,663,116

Burimi: OST sha; KESH sha; OSSH sha; FSHU sha; FTL sha; (OSHEE Group sha)

TABELA ME TE DHENA PERIODIKE MUJORE TE FTL,FSHU DHE OSSH Sh.a 4-Mujori 2020

		Janar	Shkurt	Mars	Prill	4-mujori 2020	
1	ENERGJI TOTALE E HYRE NE RRJETIN E OSSH sha (pa energjine me ngritje nga rrjeti OSSH-OST)	1=2+3	708,611	607,803	589,581	489,236	2,395,232
2	Energji e transmetuar nepermjet OST ne rrjetin e OSSH-se	2	653,339	537,547	478,468	398,877	2,190,021
3	Energji e prodhuar dhe injektuar direkt ne rrjetin e OSSH-se	3=4-5	40,951	47,848	62,368	54,044	205,211
4	Energji e prodhuar dhe e levruar ne rrjetin e shperndarjes	4	55,273	70,256	111,113	90,360	327,001
5	Energjia e ngitur ne rrjetin e transmetimit nga centralet e lidhura ne rrjetin e OSSH-se	5	14,322	22,408	48,745	36,316	121,790
6	Energji e shitur nga KESH sha per FSHU sha	6	298,517	222,669	179,765	139,303	840,254
7	Energji vetem per tu transmetuar tek klientet ne treg te liberalizuar (ne rrjetin e OSSH)	7	3,955	4,002	4,673	4,440	17,070
8	ENERGJI TOTALE QE KA KALUAR NE RRJETIN E OSSH-se	1+5	722,933	630,211	638,325	525,553	2,517,022
9	HUMBJE TOTALE NE RRJETIN E OSSH (MWh)	9=10+11+12	204,031	136,188	181,037	91,410	612,666
10	Humbje Teknikte njesite e TL (MWh)	10	10,341	9,871	8,313	7,626	36,151
11	Humbje Teknikte ne Zona (MWh)	11	123,691	79,330	94,944	52,054	350,019
12	Humbje JoTeknikte ne Zona (MWh)	12	69,999	46,987	77,781	31,730	226,497
13	HUMBJE TOTALE NE RRJETIN E OSSH (%)	13=9/8	28.22%	21.61%	28.36%	17.39%	24.34%
14	Humbje Teknikte njesite e TL (%)	14	1.43%	1.57%	1.30%	1.45%	1.50%
15	Humbje Teknikte ne Zona (%)	15	17.37%	12.80%	15.08%	10.06%	14.12%
16	Humbje JoTeknikte ne Zona (%)	16	9.68%	7.46%	12.19%	6.04%	9.00%
17	ENERGJI NE HYRJE NGA FTL (OSHEE sha)	17=18+19+20	406,140	381,133	405,142	345,494	1,537,908
18	Blere nga Prodhimi i PPE ne rrjetin e OSSH	18	55,273	70,256	111,113	90,360	327,001
19	Blere nga Prodhimi i PPE ne rrjetin e OST	19	71,387	89,969	129,540	94,582	385,477
20	Blere ne Treg te Liberalizuar nga FTL sha	20	279,480	220,908	164,489	160,552	825,429
21	ENERGJI NE DALJE E SHITUR NGA FTL (OSHEE sha)	21=22+23+24+25					1,537,910
22	Energji nga FTL per FSHU	22					924,585
23	Energji nga FTL per humbjet OSSH	23					612,667
24	Energji e furnizuar nga FTL per Kliente ne treg te liberalizuar (ne rrjetin e OSSH)	24					658
25	Energji e shitur nga FTL ne treg te liberalizuar	25					0
26	ENERGJI NE HYRJE PER FSHU (OSHEE sha)	26=27+28					1,764,839
27	Energji Faktike nga KESH sha per FSHU sha	27					840,254
28	Energji nga FTL per FSHU	28					924,585
29	ENERGJI NE DALJE PER FSHU (OSHEE sha)	29=30+35					1,764,839
30	Shitur Klienteve te Sherbimit Universal	30=31+32+33+34					1,754,351
31	Shitur klienteve Familiare	31					1,119,402
32	Shitur klienteve Private	32					447,977
33	Shitur klienteve Buxhetore	33					86,340
34	Shitur klienteve JoBuxhetore	34					100,632
35	Shitur Klienteve te mundesise se Fundit	35=36+37					10,488
36	Shitur Klienteve FMF Privat (MWh)	36					3,853
37	Shitur Klienteve FMF JoBuxhetore(MWh)	37					6,635
38	Faturuar muaji Parardhes FSHU (000/leke)	38	6,251,767	6,508,770	6,106,516	5,129,481	23,996,535
39	Arketimet e muajit aktual FSHU (000 leke)	39=40+41+42	5,712,421	5,959,484	4,729,831	5,478,206	21,879,943
40	Arketuar per faturat korrente te vitit aktual	40	4,142,703	4,209,902	3,198,616	3,163,075	14,714,297
41	Arketuar per faturat e tjera te vitit aktual	41	16,409	5,865	1,100,725	2,039,191	3,162,189
42	Arketuar per faturat e tjera te viteve te kaluara	42	1,553,310	1,743,716	430,490	275,941	4,003,457
43	Arketimet e muajit aktual FSHU (%)	43=44+45+46	91.4%	91.6%	77.5%	106.8%	91.2%
44	Arketuar per faturat korrente te vitit aktual (%)	44	66.3%	64.7%	52.4%	61.7%	61.3%
45	Arketuar per faturat e tjera te vitit aktual (%)	45	0.3%	0.1%	18.0%	39.8%	13.2%
46	Arketuar per faturat e tjera te viteve te kaluara (%)	46	24.8%	26.8%	7.0%	5.4%	16.7%
47	Faturuar muaji Raportues FSHU (000/leke)	47	6,508,770	6,106,516	5,129,481	5,029,219	22,773,986
48	Nr. Konsumatoreve gjithsej FSHU (Nr.)	48	1,250,420	1,250,686	1,250,414	1,319,867	5,071,387
49	Fatura te emetuara me lexim konsumi (Nr.)	49	976,930	975,096	972,270	984,207	3,908,503
50	Sasia e energjise se faturuar me lexim konsumi (MWh)	50					-
51	Fatura te emetuara me lexim "0" (Nr.)	51	284,467	285,907	285,854	335,660	1,191,888
52	Nr.Faturave te emetuara pa lexim (energji e pa matur) (Nr.)	52					-
53	Sasia e energjise se faturuar si energji e pamatur (MWh)	53	-	-	-	-	-
54	Nr.Faturave te emetuara pa lexim (dem ekonomik) (Nr.)	54	-	-	-	-	-
55	Shuma e faturuar si dem ekonomik (000/leke)	55	-	-	-	-	-
56	Nr.Faturave per te cilat eshte arketuar kamat vonese (Nr.)	56	395,146	371,921	419,418	565,820	1,752,305
57	Vlera e Kamat vonesave te arketuara (000/leke)	57	86,550	74,301	76,764	53,075	290,690

Burimi: OSSH sha; FSHU sha; FTL sha; (OSHEE Group sha)

BILANCI ENERJITIK I FTL sha, FSHU SHA DHE OSSH sha PER 4-MUJORIN 2020 (MWh)			
1	ENERGJI TOTALE E HYRE NE RRJETIN E OSSH-se	2+3+7.6	2,395,234
2	Energji e shitur nga KESH sha per FSHU sha		840,254
3	ENERGJI NE MARRJE NGA FTL (OSHEE Group sha)	3.1+3.2+3.3	1,537,910
3.1	Blere nga Prodhimi i PPE në rrjetin e OSSH		327,004
3.2	Blere nga Prodhimi i PPE në rrjetin e OST		385,477
3.3	Blere ne Treg të Liberalizuar nga FTL sha		825,429
4	ENERGJI NE DHENJE FTL (OSHEE Group sha)	4.1+4.2+4.3+4.4	1,537,910
4.1	Energji nga FTL per FSHU		924,585
4.2	Energji nga FTL për humbjet OSSH		612,667
4.3	Energji e furnizuar nga FTL për Kliente ne treg të liberalizuar (ne rrjetin e OSSH)		658
4.4	Energji e shitur nga FTL ne treg te liberalizuar		0
5	ENERGJI NE MARRJE NGA FSHU (OSHEE Group sha)	2+4.1	1,764,839
5.1	Energji Faktike nga KESH sha per FSHU sha	2	840,254
5.2	Energji nga FTL per FSHU	4.1	924,585
6	ENERGJI NE DHENJE FTL (OSHEE Group sha)	6.1 deri 6.14	1,764,839
6.1	Shitur Klienteve te Sherbimit Universal		1,754,351
6.11	Shitur klienteve Familiare		1,119,402
6.12	Shitur klienteve Private		447,977
6.13	Shitur klienteve Buxhetore		86,340
6.14	Shitur klienteve JoBuxhetore		100,632
6.2	Shitur Klienteve të mundesisë së Fundit		10,488
6.21	Shitur Klienteve FMF Privat (MWh)		3,853
6.22	Shitur Klienteve FMF JoBuxhetore(MWh)		6,635
7	ENERGJI QE KALON NE RRJETIN E OSSH-se	4.2+2+4.1+7.4+7.5+7.6	2,517,024
7.1	Energji nga FTL për humbjet OSSH		612,667
7.2	Energji Faktike nga KESH sha per FSHU sha		840,254
7.3	Energji nga FTL per FSHU		924,585
7.4	Energjia e ngitur ne rrjetin e transmetimit nga centralet e lidhura ne rrjetin e OSSH		121,790
7.5	Energji e furnizuar nga FTL për Kliente ne treg të liberalizuar (ne rrjetin e OSSH)		658
7.6	Energji vetem per tu transmetuar tek klientet ne treg te liberalizuar (ne rrjetin e OSSH)		17,070
8	Humbje totale ne rrjetin e OSSH-se (%)	7.1 x 100 / 7	24.34

Burimi: OSSH sha; FSHU sha; FTL sh

Bilanci i Energjisë Elektrike për 4-M pare 2020

OST sha	Njësia e Matjes	Janar	Shkurt	Mars	Prill	Shuma 2020 [MWh]
	MWh					
	1	320,656	232,362	189,098	138,036	880,152
Prodhimi nga HEC/HPP e vogla në Rrjetin e Transmetimit	2	14,322	22,408	48,745	36,316	121,790
Prodhimi nga PPE/IPP e mëdha në Rrjetin e Transmetimit	3	52,748	73,848	114,190	86,009	326,795
Prodhimi nga HEC Peshqesh	4	6,612	12,230	13,772	5,360	37,974
Prodhimi nga HEC Banja	5	14,468	8,159	26,147	12,637	61,412
Prodhimi nga HEC FANG	6	24,545	23,230	28,792	10,581	87,149
Prodhimi nga HEC Moglicë	7	-	-	295	15,367	15,662
Prodhimi nga HEC Ashta	8	18,639	16,120	15,350	8,573	58,682
Prodhimi nga KURUM (Ulez-Shkopet&Bistrical,2)	9	41,281	30,310	46,138	37,115	154,845
Eksporti (-) nga Linjat e Interkonjeksionit	D	127,708	109,561	109,193	68,727	415,189
Importi (+) nga Linjat e Interkonjeksionit	R	364,780	324,698	227,599	211,554	1,128,631
Balanca (Total Interkonjeksioni)	10=(R-D)	237,072	215,137	118,405	142,827	713,442
Energjia Totale në Marrje	11=(1+2+3+4+5+6+7+8+9+R)	858,052	743,367	710,126	561,548	2,873,092
Humbjet në Rrjetin e Transmetimit (përfshirë Nevojat Vetjake)	12	17,632	16,391	17,447	13,532	65,003
Humbjet në Rrjetin e Transmetimit %	13=12/11	2.05	2.21	2.46	2.41	2.26
Energjia Totale në Dhënie	14=(11-12)	840,420	726,975	692,678	548,016	2,808,089
<i>Transmetuar në Linjat e Interkonjeksionit</i>	15=D	127,708	109,561	109,193	68,727	415,189
<i>Transmetuar tek Klientët e Kualifikuar</i>		44,974	57,388	56,199	44,029	202,589
<i>EL220-L220KURUM/337</i>		14,170	27,621	24,147	18,114	84,052
<i>F.Arrez-T3/653</i>		1,436	1,399	1,499	1,363	5,697
<i>Titan T1,T2</i>		5,181	8,943	8,934	3,396	26,455
<i>FUSHE KRUIJE 220kV-T2/058</i>		8,539	4,098	6,023	6,012	24,672
<i>N/ST 220/6,3Colacent-T1/336</i>		849	1,089	824	831	3,593
<i>N/ST i GSA EL 110kV-T1/694</i>		91	112	108	249	559
<i>N/ST i GSA EL 110kV-T2/960</i>		-	-	-	-	-
<i>N/ST i AES EL 110kV-T1/690</i>		3,745	3,471	3,647	3,498	14,362
<i>N/ST I AES EL 110kV-T2/692</i>		3,784	3,453	3,651	3,502	14,390
<i>HEC Moglice T1,T2,T3</i>		381	330	306	270	1,287
<i>HEC Peshqesh-T1/633</i>		35	2	7	31	75
<i>Lajthiza T1/742</i>		34	326	351	242	954
<i>HEC Ashta1-T1,HEC Ashta2-T1,</i>		0	-	-	-	0
<i>HEC Banje T1,T2</i>		21	19	17	19	76
<i>HEC Fang-T1,T2,</i>		41	27	26	35	129
<i>Gjerim KURUM</i>		6	23	3	0	31
<i>TEC Ballsh-T1/598</i>		78	72	74	67	290
<i>FERRO KROM-F1,F2,F3,F4</i>		6,659	6,474	6,657	6,468	26,257
<i>Transmetuar në rrjetin e Shpërndarjes</i>		667,660	559,955	527,213	435,193	2,190,021
<i>Transmetuar në rrjetin e Shpërndarjes 110 kV</i>		563,171	470,945	440,321	361,439	1,835,876
<i>Transmetuar në rrjetin e Shpërndarjes 35 kV</i>		51,933	44,817	45,357	39,280	181,387
<i>Transmetuar në rrjetin e Shpërndarjes 6, 10, 20 kV</i>		52,556	44,193	41,535	34,473	172,757

Burimi: OST sha

TË DHËNA MBI TRANSMETIMIN E ENERGJISË ELEKTRIKE NGA OPERATORI I SISTEMIT TE TRANSMETIMIT NË SHQIPËRI PËR 4-Mujorin e pare 2020 (MWh)

	Janar	Shkurt	Mars	Prill	2020		
HYRJE	Dhene nga H/C e KESH ne rrjetin e Transmetimit	320,656	232,362	189,098	138,036	880,152	2,873,092
	Dhene nga H/C e me perparesi ne rrjetin e Transmetimit	52,748	73,848	114,190	86,009	326,795	
	Energji nga Hec-et Lokale levruar ne Rrjetin e Transmetimit (me ngritje)	14,322	22,408	48,745	36,316	121,790	
	Gjenerim KURUM (prodhues i pavarur)	41,281	30,310	46,138	37,115	154,845	
	HEC ASHTA (prodhues i pavarur Kontr.me OSHEE)	18,639	16,120	15,350	8,573	58,682	
	HEC BANJE (prodhues i pavarur)	14,468	8,159	26,147	12,637	61,412	
	HEC MOGLICE (prodhues i pavarur)	-	-	295	15,367	15,662	
	HEC PESHQESH-T1/637 (prodhues i pavarur)	6,612	12,230	13,772	5,360	37,974	
	HEC FANGU (prodhues i pavarur)	24,545	23,230	28,792	10,581	87,149	
	Importi(Hyre) nga Linjat e Interkonjeksionit	364,780	324,698	227,599	211,554	1,128,631	
Verifikim i saktësisë së bilancit						0	
DALJE	Humbjet ne Transmetim	17,632	16,391	17,447	13,532	65,003	2,873,092
	Transmetuar ne Rrjetin e Shperndarjes	667,660	559,955	527,213	435,193	2,190,021	
	Klientene treg te hapur (TL) (+Tec Ballsh)	45,052	57,459	56,272	44,096	202,879	
	Eksporti (Dale) nga Linjat e Interkonjeksionit	127,708	109,561	109,193	68,727	415,189	
Humbjet ne Transmetim	17,632	16,391	17,447	13,532	65,003		
Humbjet ne Transmetim ne %	2.05	2.21	2.46	2.41	2.26		

Burimi: OST sha

PARAQITJA SKEMATIKE E FLUKSEVE TE ENERJISE NE SISTEMIN ELEKTRO-ENERGJITIK SHQIPETAR VITI 20 (MWh)

Energji e lëvruar nga H/C-et e KESH sha	Energji e levruar nga prodhuesit me përparësi lidhur ne OST	Energji e levruar nga H/C ASHTA lidhur ne OST	Energji e levruar nga H/C et Priv/konc lidhur ne OST (Prodhues ne treg te hapur)					Energji ne hyrje nga Interkonieksioni
880,152	326,795	58,682	Kurum	Banje	Moglice	Fangu	Peshqesh	1,128,631
			154,845	61,412	15,662	87,149	37,974	

2,873,092

ENERGJI HYRESE NE RRJETIN E TRANSMETIMIT

121,790		HC.Priv/Kon + CENTR Fotovoltaikë ne Rrjetin e OSSH	Humbje + Konsum ne Transmetim	Konsumi i klienteve në treg të hapur te lidhur ne Transmetim	Energji ne dalje nga Interkonieksioni
Neto (Selit)	315,777				
11,225				290 Tec Ballshi	
327,002					

Energji e tranmetuar direkt ne rrjetin e OSSH	205,212
---	---------

Energji e transmetuar ne rrjetin e Shperndarjes nga OST	2,190,021
---	-----------

2,395,232

ENERGJI HYRESE NE RRJETIN E SHPERNDARJES

Lëvruar ne rrjetin e OSHE për FMF jo klient (tarifë aksesi)	17,070
---	--------

658 FTL (Shitur klienteve ne treg te liberalizuar)

Energji e përdorur për klientët e FSHU / OSHEE Group

2,377,504

Shitur Kons Familjare FSHU	1,119,402	1,764,839	2,377,506
Shitur Kons Jo Familjare FSHU	634,949		
Shitur Kons Jo Familjare FMF	10,488		
Humbje tekn TL	36,151	612,667	
Humbje teknike ne zona	350,019		
Humbje Jo teknike ne zona	226,497		

-2

LEGJENDA

FSHU	FURNIZUES I SHERBIMIT UNIVERSAL
FMF	FURNIZUES I MUNDESISE SE FUNDIT

Burimi: OST sha; KESH sha; OSSH sha; FSHU sha; FTL sha; (OSHEE Group sha)

PRODHIMI NETO NE SHQIPERI	Janar	Shkurt	Mars	Prill	Progresivi 2020
Prodhimi Neto KESH sha.	320,656	232,362	189,098	138,036	880,152
Hec-et Private dhe Konc. (Rrjeti Shperndarjes)	51,043	65,805	105,406	84,561	306,815
Hec-et Private dhe Konc. (Rrjeti Transmetimit)	52,748	73,848	114,190	86,009	326,795
HEC Ashta	18,639	16,120	15,350	8,573	58,682
Prodhimi Neto Hec Lanabregas	2,720	2,570	3,116	2,819	11,225
Prodhimi Neto (Hec Ulez,Shkopet,Bistrica 1,2)	41,281	30,310	46,138	37,115	154,845
Prodhimi Hec Peshqesh	6,612	12,230	13,772	5,360	37,974
Prodhimi Hec Fangu	24,545	23,230	28,792	10,581	87,149
Prodhimi Hec Banja	14,468	8,159	26,147	12,637	61,412
Prodhimi Hec Moglica	-	-	295	15,367	15,662
Prodhimi i Centraleve Fotovoltaike	1,510	1,881	2,591	2,980	8,962
ENERGJIA NETO E PRODHUAR NE SHQIPERI	534,223	466,517	544,895	404,037	1,949,672

ENERGJI NGA INTERKONEKSIONI					
Energji ne dhenie nga Interkoneksioni	127,708	109,561	109,193	68,727	415,189
Energji ne marrje nga Interkoneksioni	364,780	324,698	227,599	211,554	1,128,631
Ballanca Hyrje/Dalje nga Interkoneksioni	237,072	215,137	118,405	142,827	713,442

KONSUMI I ENERGJISE NE SHQIPERI	
Konsumi i klientëve Tarifore	1,754,351
Konsumi i klientëve të furnizuar si FMF	10,488
Konsumi i Klientëve që përdorin rrjetin për energji e blerë ne treg të liberalizuar	17,070
Energji për Klientet ne treg të liberalizuar lidhur në OSSH me furnizues FTL	658
Konsumi për mbulimin e humbjeve	612,667
Konsumuar nga Klientet e lidhur në OST	202,589
Konsumuar nga OST (humbje +nevoja vetiake)	65,003
Konsumuar Tec Ballshi	290
KONSUMI TOTAL 2020 (4-mujori)	2,663,116

Burimi: OST sha; KESH sha; OSSH sha; FSHU sha; FTL sha; (OSHEE Group sha)

PRODHIMI GJATE VITIT 2020 NGA CENTRALET E LIDHURA NE RRJETIN E TRANSMETIMIT (MWh)									
HECET DHE KAPACITETI	MW	SUBJEKTI	LIDHJA	JANAR	SHKURT	MARS	PRILL	4-M 2020	
Hec "Fierze" me fuqi 500 MW	500.000	"KESH" sha	220 kV	320,656	232,362	189,098	138,036	880,152	
Hec "Koman" me fuqi 600 MW	600.000		220 kV						
Hec "V. Dejes" me fuqi 250 MW	250.000		220 kV						
Tec Vlora me fuqi 98 MW	98.000	"KESH" sha	220 kV						
Hec "Ulez" me fuqi 25,2 MW	25.200	"Kurum International" sh.a.	110 kV	41,281	30,310	46,138	37,115	154,845	
Hec "Shkopet" me fuqi 24 MW	24.000		110 kV						
Hec "Bistrica 1" me fuqi 22,5Mw	22.500		110 kV						
Hec "Bistrica 2" me fuqi 5 Mw	5.000		110 kV						
Hec"Peshqesh"me fuqi 27,94 MW,;	27.940	"Ayen As Energji"sha	220 kV	6,612	12,230	13,772	5,360	37,974	
Hec"Fangu"me fuqi 74.6 MW,;	74.600		220 kV	24,545	23,230	28,792	10,581	87,149	
Hec "Banje" me fuqi 73 MW	73.000	"Devoll Hydropower" sha	110 kV	14,468	8,159	26,147	12,637	61,412	
Hec "Moglice" me fuqi 184 MW	184.000	"Devoll Hydropower" sha	111 kV	-	-	295	15,367	15,662	
Hec "Ashta" me fuqi 48,2 MW	48.200	"Energji Ashta" shpk	110 kV	18,639	16,120	15,350	8,573	58,682	
Hec "Bishnica 2" me fuqi 2.5 MW	2.500	"HEC Bishnica 1,2 "shpk	110 kV	833	773	1,406	1,211	4,223	
Hec "Dardhe" me fuqi 5,8 MW	5.800	"Wenerg " shpk	110 kV		868	1,488	2,341	1,513	6,209
Hec"Truen" me fuqi 2,5 MW	2.500	"TRUEN" shpk	110 kV						
Hec"Terrove" me fuqi 8.385 Mw	0.921	"TEODORI 2003" shpk	110 kV	1,002	998	999	1,040	4,039	
Hec"Gjorice" me fuqi 4.18 Mw (+h/c ne prodhim)	29.610	"DITEKO" shpk	110 kV	11,162	13,888	18,443	13,490	56,982	
Hec "Slabinje" me fuqi 13,8 MW	13.800	"Power Elektrik Slabinje" shpk	110 kV	3,277	4,537	8,300	7,494	23,609	
Hec"Bele 1"me fuqi 5 MW ;	5.000	"Euron Energy" shpk	110 kV	8,300	13,745	17,200	18,741	57,985	
Hec"Topojan 2" me fuqi 5,8 MW,;	5.800								
Hec"Bele 2"me fuqi 11 MW ;	11.000	"Alb-Energy" shpk							
Hec"Topojan 1" me fuqi 2,9 MW,;	2.900	"Energai" shpk	110 kV	679	1,190	2,281	2,014	6,164	
Hec"Orgjost 1 Ri" me fuqi 4,8 MW	4.800								
Hec "Cerunje-1" me fuqi 2.3 MW;	2.300	"Energy partners Al" shpk	110 kV	2,984	3,488	4,793	4,235	15,500	
Hec "Cerunje-2" me fuqi 2.8 MW;	2.800								
Hec "Rrupe" me fuqi 3.6 MW;	3.600								
Hec "Rapuni 1,2" me fuqi 4 dhe 4.1 MW	8.100	"C & S Construction Energy" shpk	110 kV	2,893	3,403	4,823	3,252	14,370	
Hec "Rapuni 3,4" me fuqi 8,857 MW	8.850	"C & S Energy" shpk	110 kV	3,265	3,932	7,614	7,445	22,256	
Hec"Llapaj" me fuqi 13,62 MW	13.620	"Gjo.Spa.POWER"shpk	110 kV	1,945	1,443	4,335	2,736	10,459	
Hec"Lengarice" me fuqi 8.94 MW	8.940	"Lengarica & Energy" shpk	110 kV						
Hec"Lura 1" me fuqi 6,54 MW	6.540	"Erdat Lura" shpk	110 kV	2,376	4,054	6,061	3,130	15,620	
Hec"Lura 2" me fuqi 4,02 MW	4.020		110 kV						
Hec"Lura 3" me fuqi 5,66 MW	5.660		110 kV						
Hec"Malla" me fuqi 5,455 MW	5.455	"Gjyre Rec" shpk	110 kV	912	1,424	2,140	1,035	5,511	
Hec Prella me fuqi 14,97 MW	14.970	"Prelle Energji"	110 kV	1,605	3,436	4,907	2,066	12,014	
HEC Cemerica 1	0.88	"REJ ENERGY" shpk	110 kV	722	1,154	2,230	1,698	5,804	
HEC Cemerica 2	1.08		110 kV						
HEC Cemerica 3	2.1		110 kV						
HEC TUÇ	4.47	MC Inerte Lumzi	110 kV	1,283	2,783	4,295	1,224	9,585	
HEC Lumzi	11		110 kV						
Hec Denas	14.5	"Denas Power" shpk	110 kV	1,830	2,727	5,863	3,421	13,841	
Llënga 1	1.73	"HEC LLËNGË" sh.p.k	110 kV	414	441	1,278	1,229	3,363	
Llënga 2	0.3		110 kV						
Llënga 3	1.5		110 kV						
HEC Shpella Poshte 2	2.3	Liria Energji shpk	110 kV	593	699	1,515	1,286	4,093	
HEC Germani 1	4.8	SA'GA-MAT shpk	110 kV	526	684	1,133	475	2,818	
HEC Germani 2	1.5		110 kV						
Hec Lashkiza 1	4.076	HEC Lashkiza shpk	110 kV	385	436	1,019	304	2,145	
Hec Lashkiza 2	0.882		110 kV						
Hec Seta 1+2	7.454	"Hydro Seta" sh.p.k	110 kV	2,453	3,545	5,245	3,798	15,040	
Hec Seta 3	2.722		110 kV						
Hec Seta 4	4.724		110 kV						
HEC Darsi 1,2,3	12.7	Henz Energy shpk	110 kV	2,371	2,850	4,263	1,932	11,417	
HEC Egnatia	5.1	REMI shpk	110 kV	70	731	1,706	1,242	3,749	
	2,186			52,748	73,848	114,190	86,009	326,795	

PRODHIMI GJATE VITIT 2020 NGA CENTRALET E LIDHURA NE RRJETIN E SHPERNDARJES (MWh)								
HECET DHE KAPACITETI	MW	SUBJEKTI	LIDHJA	JANAR	SHKURT	MARS	PRILL	2020
Hec"Lanabregas" me fuqi 5 MW	5.000	"Hec Lanabregas" sha	35	2,720	2,570	3,116	2,819	11,225
Hec "Lenie" me fuqi 400 kW	0.400	"EMIKEL 2003" sh.p.k	10kV	264	260	260	265	1,049
Hec "Çorovode" me fuqi 200 kW	0.200		10kV	54	64	104	92	315
Hec "Smokthine" me fuqi 9,2 MW	9.200	"Albania Green Energy" sh.p.k	35 kV	3,913	2,793	3,612	3,057	13,376
Hec "Bulqize" me fuqi 0,6 MW (Diber)	0.600		10kV	91	104	154	144	494
Hec "Homesh" me fuqi 0,395 MW (Diber)	0.395		10kV	28	22	57	50	158
Hec "Zerqan" me fuqi 0,625 MW (Diber)	0.625		6kV	54	53	79	104	290
Hec "Arras" me fuqi 4,8 MW (Diber)	4.800		20kV	1,813	1,897	2,508	2,039	8,258
Hec "Orgjost" me fuqi 1,2 MW (Kukes)	1.200		10kV	287	581	649	673	2,190
Hec "Lekbibaj" me fuqi 1,4 MW (Tropoje)	1.400		10kV	544	569	862	621	2,596
Hec "Dukagjin" me fuqi 0,64 MW (Shkoder)	0.640		10kV	144	132	147	159	583
Hec "Marjan" me fuqi 0,2 MW (Korce)	0.200		10kV	-	-	-	-	-
Hec "Lozhan" me fuqi 0,1 MW (Korce)	0.100		10kV	-	73	79	70	221
Hec "Barmash" me fuqi 0,83 MW (Kolonje)	0.830		10kV	161	107	210	105	583
Hec "Treske 2" me fuqi 0,25 MW (Korce)	0.250		10kV	89	72	121	100	382
Hec "Nikolice" me fuqi 0,7 MW (Korce)	0.700		10kV	161	132	187	176	655
Hec "Funares" me fuqi 1,92 MW (Librazhd)	1.920		10kV	802	718	746	754	3,020
Hec "Lunik" me fuqi 0,2 MW (Librazhd)	0.200		10kV	125	129	138	124	516

Hec "Kerpice" me fuqi 0,42 MW (Gramsh)	0.420		6kV	88	75	97	84	344
Hec "Ujanik" me fuqi 0,63 MW (Skrapar)	0.630		10kV	150	96	228	164	639
Hec "Borsh" me fuqi 0,25 MW (Sarande)	0.250		6kV	140	105	109	82	436
Hec "Leshnice" me fuqi 0,38 MW (Sarande)	0.380		10/6kv	102	58	79	52	290
Hec "Velcan" me fuqi 1,2 MW (Korce)	1.200		10kV	261	288	543	550	1,643
Hec "Muhur" me fuqi 0,25 MW (Diber)	0.250		6kV	93	98	123	101	415
Hec "Rajan" me fuqi 1,02 MW (Kolonje)	1.020		10kV	291	188	392	285	1,156
Hec "Lure" me fuqi 0,75 MW (Diber)	0.750		10kV	146	-	-	-	146
Hec "Gjanç" me fuqi 2,96 MW	2.960	"Spahiu Gjanç" sh.p.k.	35 kV	-	-	-	-	-
Hec "Bogove" me fuqi 2,5 MW	2.500	"Wonder power" sha	35 kV	400	515	1,218	754	2,887
Hec "Xhyre" me fuqi 570 kW	0.570	"Amal" sh.p.k	10kV	191	188	248	210	837
Hec "Stranik" me fuqi 4.6 MW	4.600	"Hidroinvest 1" shpk	35kV	1,021	1,428	2,148	1,620	6,217
Hec "Zall Tore" me fuqi 3 MW	3.000		35kV	914	1,194	1,760	1,379	5,247
Hec "Klos" me fuqi 1,95 MW	1.950	"Malido-Energji" shpk	6kV	208	262	484	250	1,204
Hec "Borje" me fuqi 1.5 MW	1.500	"HIDROALBANIA Energji" shpk	35kV	1,157	1,742	2,980	3,275	9,154
Hec "Cernaleve " me fuqi 2.95 MW	2.950	"HIDROALBANIA Energji" shpk	35kV	361	713	1,205	1,286	3,564
Hec "Cernaleve 1" me fuqi 3.27 MW	3.270	"HIDROALBANIA Energji" shpk	35kV	438	801	1,414	1,517	4,170
Hec "Murdhar 1" me fuqi 2.68 MW	2.680	"HydroEnergy "shpk	10kV	1,178	1,464	1,900	947	5,490
Hec "Murdhar 2" me fuqi 1 MW	1.000		10kV	684	840	1,079	538	3,141
Hec "Dishnice" me fuqi 0.2 MW	0.200	"Dishnica Energy" shpk	10kV	24	39	84	100	246
Hec "Lubonje" me fuqi 0.3 MW	0.300	"Elektro Lubonje" shpk	10kV	22	27	112	59	220
Hec "Peshke" me fuqi 3.43 MW	3.430	"Koka & Ergi Energy Peshk" shpk	35kV	764	1,295	1,873	1,396	5,328
Hec "Labinot –Mal" me fuqi 0.25 MW	0.250	"Ansara Koncension" shpk	6kV	27	38	44	41	150
Hec "Pobreg" me fuqi 12,3 MW	12.300	"Energy Plus" shpk	35kV	2,586	4,831	6,732	6,604	20,753
Hec "Vlushe" me fuqi 14.2 MW	14.200	"Hec Vlushe" shpk	35kV	1,798	3,204	6,478	3,850	15,329
Hec "Belesova 1" me fuqi 0.150 MW	0.150	"Korkis 2009" shpk	6kV	10	23	42	14	89
Hec "Faqekuq 1,2" me fuqi (3 MW; 3.4 MW)	6.400	"HP OSTROVICA" shpk	35kV	748	1,028	2,325	2,055	6,156
Hec "Shemri" me fuqi 1 MW	1.000	"Erald Energjitik" shpk	10	95	285	466	352	1,197
Hec "Mgulle" me fuqi 0.28 MW	0.280		10kV	83	204	249	266	801
Hec "Kryezi 1" me fuqi 0.6 Mw	0.600	"Bekim Energjitik" shpk	10kV	157	447	472	229	1,305
Hec "Selishte" me fuqi 2 MW	2.000	"Selishte" shpk	35kV	334	596	973	775	2,679
Hec "Carshove" me fuqi 1.5 Mw	1.500	"ERMA MP" shpk	10kV	283	188	401	227	1,100
Hec "Ura e Dashit" me fuqi 1,2MW	1.200		10kV	666	629	1,525	1,101	3,920
Hec "Gizavesh" me fuqi 0.5 MW	0.500	"Dosku Energy" shpk	10kV	209	256	293	262	1,020
Hec "Koka 1" me fuqi 3.2 MW	3.200	"Snow Energy" shpk	35kV	235	438	880	968	2,520
Hec "Stravaj" me fuqi 3.6 MW	3.600	"Stravaj Energji" shpk	35kV	937	1,163	1,792	1,310	5,202
Hec "Picar 1" me fuqi 0,2 MW	0.200	"Peshko Picar 1" shpk	6kV	122	66	69	55	312
Hec "Vertop" me fuqi 1,52 Mw	1.520	"Hydro Salillari Energy" shpk	35kv	226	283	637	374	1,520
Hec "Martanesh" me fuqi 10,5 MW	10.500	"Albanian Power" shpk	35kV	1,001	1,853	2,511	2,377	7,743
Hec "Verba 1,2" me fuqi (2 MW, 3 MW)	5.000	"Hydro power Plant Of Korca" shpk	35kV	529	348	879	1,390	3,146
Hec "Fterra" me fuqi 1,08 MW	1.080	"Hidro Borshi" shpk	35kV	862	810	1,095	797	3,563
Hec "Ostren i Vogel" me fuqi 0,32 MW	0.320	"Lu & Co Eco Energy" shpk	10kV	52	56	93	87	287
Hec "Kozel" me fuqi 0,5 MW	0.500	"E.T.H.H. "shpk	10kV	90	77	137	139	443
Hec "Helmes 1" me fuqi 0,8 MW	0.800		10kV	189	191	398	376	1,153
Hec "Helmes 2" me fuqi 0,5, MW	0.500		10kV	92	85	203	167	547
Hec "Qafezeze" me fuqi 0,4 MW	0.400	"Caushi Energji" shpk	10kV	335	342	478	470	1,625
Hec "Trebisht" me fuqi 1,775 MW	1.775	"SA.GLE.Kompani" shpk	10kV	179	484	865	623	2,151
Hec "Mollaj" me fuqi 0,6 MW	0.600	"Energji Xhaci" shpk	10kV	40	66	57	64	227
Hec "Tucep" me fuqi 0,4 MW	0.400	"Tucep" shpk	10kV	228	-	286	267	781
Hec "Treska4" me fuqi 3,6 MW	3.600	"Hec-Treske"shpk	35kV	861	715	1,442	958	3,976
Hec "Treska3" me fuqi 0.3 MW	0.300		35kV	101	106	189	136	532
Hec "Treska 2T" 5 me fuqi 0.62 MW	0.620		35kV	218	170	355	236	978
Hec "Sotire 1 & 2" me fuqi 2,2 MW	2.200	"Hidro Energy Sotire"shpk	35kV	526	445	795	535	2,301
Hec "Shutine" me fuqi 2,4 MW	2.400	"Shutina energji"shpk	10kV	176	408	438	218	1,240
Hec "Cekrez 1,2" me fuqi (0,23 MW; 0,43 MW)	0.660	"Zall Herr Energji 2011"shpk	6kV	374	376	387	366	1,503
Hec "Qarr" me fuqi 1 MW	1.000	"Hec Qarr & Kaltanj"shpk	35kV	316	298	630	377	1,621
Hec "Bisak" me fuqi 1,3 MW	1.300	"Bardhgjana" shpk	6kv	473	222	658	253	1,606
Hec "Shales" me fuqi 1,08 MW	1.080	"Gjoka Konstruksion Energji" shpk	35kV	9	-	-	-	9
Hec "Strelce" me fuqi 1,174 MW	1.174		35kV	354	516	945	739	2,553
Hec "Shpelle" me fuqi 400 kW	0.400	"Sarolli" sh.p.k	10kV	87	110	222	214	633
Hec "Treska 1" me fuqi 130 kW	0.130	Star NRG sh.p.k	10kV	-	-	-	-	-
Hec "Bicaj" me fuqi 3,1 MW	3.100	"EN-KU" sh.p.k	10kV	-	-	-	-	-
Hec "Leskovik 1" me fuqi 1072 kW	1.072	"Maksi Elektrik" sh.p.k	10kV	48	45	49	47	188
Hec "Leskovik 2" me fuqi 1100 kW	1.100		10kV	62	58	64	60	245
Hec "Orenje" me fuqi 875 kW	0.875	"Juana" sh.p.k	10kV	205	157	227	148	737
Hec "Tamarë" me fuqi 750 kW	0.750	"WTS Energji" shpk	10kV	-	-	-	-	-
Hec "Benë" me fuqi 1000 kW	1.000	"Marjakaj" shpk	6kV	149	188	188	145	671
Hec "Vithkuq" me fuqi 2,715 MW	2.715	"Favina 1" shpk	35/10kV	915	844	1,656	1,377	4,792
Hec "Selce" me fuqi 1600 kW	1.600	"Selca Energji" shpk	10kV	280	406	505	594	1,784
Hec "Kumbull- Merkurth" me fuqi 0.83 Mw	0.830	"DN & NAT Energy"shpk	6kV	79	117	189	203	588
Hec "Sasaj" me fuqi 8,6 MW	8.600	"Energo – Sas" shpk	35kV	2,969	2,440	3,294	2,708	11,410
Hec "Tervol" me fuqi 10.6 MW	10.600	"Hec i Tervolit" shpk	35kV	1,995	3,212	4,507	3,517	13,232
Hec "Radove" me fuqi 2,5 MW	2.500	"MTC Energy" shpk	10kV	815	558	960	618	2,950
Hec "Gurshpat 1" me fuqi 0,84 MW,	0.840	"Gurshpat Energy" shpk	10kV	443	353	617	419	1,832
Hec "Gurshpat 2" me fuqi 0,83 MW	0.830		10kV	494	463	520	481	1,959

Hec"Bistrica 3" me fuqi 1,57 MW,	1.570	"Bistrica 3 Energy" shpk	6kv	624	780	794	731	2,929
Hec"Hurdhas 1" me fuqi 1,71MW,	1.710	"Komp Energji" shpk	6kV	359	865	1,181	592	2,997
Hec"Perrollaj" me fuqi 0,5 MW	0.500	"Fatlum" shpk	10kV	-	43	110	3	156
Hec"Koxheraj" me fuqi 0,62 MW	0.620	"Koxherri Energji" shpk	10kv	114	178	211	149	652
Hec"Kacni" me fuqi 3,87 MW	3.870	"Kisi-Bio-Energji" shpk	20kV	196	378	844	805	2,224
Hec"Lena 1" me fuqi 1,95 MW,;	1.950		35kv					
Hec"Lena 2" me fuqi 2,3 MW	2.300	"Gama Energy" shpk	35kv	257	714	1,394	1,046	3,411
Hec"Lena 2A" me fuqi 0,25 MW	0.250		35kv					
Hec "Driza" me fuqi 3,408 MW	3.408	"Mesopotam Energy" shpk	35kv	361	236	454	245	1,295
Hec Strelca 1,2,3 (1.504 MW, 0.325 MW, 3.52 MW)	5.349	"Strelca Energy" shpk	35kv	734	814	1,752	2,042	5,342
Hec "Ujanik 2" me fuqi 2,5 MW	2.500	"HP Ujaniku Energy" shpk	35kv	495	573	1,025	605	2,698
Hec "Nishove" me fuqi 1,36 MW	1.360	"Nishova Energy" shpk	35kv	119	95	342	169	725
Hec "Shtika" me fuqi 1,3 MW	1.300	"Perparimi SK" shpk	10kv	24	80	478	270	852
Hec "Ballenje" me fuqi 1,9 MW	1.900	"Ballenja Power Martanesh" shpk	35kv	149	293	678	395	1,515
Hec Gavran 1	0.998	"Gavran Energy" shpk	35kv	213	247	450	336	1,246
Hec Gavran 2	1.215	"Gavran Energy" shpk	35kV	150	156	362	284	951
Hec Kasollet e Selces 1	4.000	"Xhango Energji" shpk	35kV	573	859	1,432	1,145	4,009
Hec Holta Kabash	2.200		35kV					
Hec Holta Poroçan	3.300	HEC Kabash Porocan shpk	35kV	657	1,399	1,950	1,800	5,806
Hec Lusën 1	0.315	"Eurobiznes" shpk	35kV	41	52	107	52	252
Hec Ura e Fanit	1.000	"Ayen As Energji" sha	35kV	509	469	506	467	1,950
HEC Gorice	1.747	"THE BLUE STAR" sh.p.k	35kV	214	330	737	740	2,021
HEC Kabash 1&2	5.800	"Univers Energji" shpk	35kV	210	630	630	105	1,575
HEC "Tucep 2"	1.7	"DUKA T2" shpk	35kV	143	223	-	160	527
Hec Dobrenje Tomorrice	2.4	DAAB Energy Group shpk	35kV	287	305	560	396	1,547
Hec Razdoll	0.765	Hidro Vizion shpk (I pa licens nga ER	35kV	80	90	235	295	700
Hec Dragostunje	3.1	"HEC-i Dragostunje" shpk	35kV	771	1,338	2,653	1,847	6,609
Hec Stebleve	3.4	"PURE ENERGY STEBLEVA" shpk	35kV	158	309	517	392	1,377
Hec Zerec 1	0.55		35kV					
Hec Zerec 2	1.315	"EnRel Hydro" shpk	35kV	288	543	885	836	2,552
Hec Shëngjon 1	0.651		35kV					
Hec Shëngjon 2	0.356	"EDIANI" sh.p.k.	35kV	150	178	309	187	824
HEC Blaç	1.3	"BLAC ENERGY" sh.p.k	35kV	36	33	65	213	346
HEC Qarrishtë	0.3	"IDI-2005" SHPK	35kV	98	136	197	178	609
HEC Vendresh	0.456	"HP VENDRESH ENERGY" SHPK	35kV	4	31	109	25	169
HEC "Antena"	1.105	"DERBI-E" shpk	35kV	166	260	407	172	1,005
HEC "Kamenice"	0.973	HP Kamenica shpk	10	174	230	428	495	1,327
HEC "Qytezë"	0.9	Muso hec Qytezë	10	121	148	283	329	881
HEC Marjan Gura e Vesheve	0.63	Marituda Shpk	10	144	59	155	141	500
HEC Skatinë	2.677	Skatina Hec Shpk	10	164	408	686	232	1,490
HEC Kaparjel	0.2	ABV Konstruksion Shpk	10	60	52	79	66	257
HEC Letaj	0.54	Asi-Tre Shpk	10	70	95	154	86	406
HEC Nice	2.133	MP-HEC Shpk	35	72	152	385	330	938
HEC Meshurdhe	1.8	SIMA-Com Shpk	10	299	639	779	354	2,070
HEC Thanez	1.95	AFRIMI K Shpk	35	298	877	961	676	2,811
HEC OSOJE	1.9	OSOJA HPP shpk	35	126	762	1,426	1,421	3,735
Hec Voskopoje	1.9	FAVINA 1 shpk	35	-	312	1,078	730	2,120
Hec Nderfushas	1.34	SGD Energji shpk	35	-	68	346	201	615
Hec Rreshen	0.38	Nikolli Energy shpk	10	112	45	69	48	274
	270			53,763	68,375	108,522	87,380	318,040

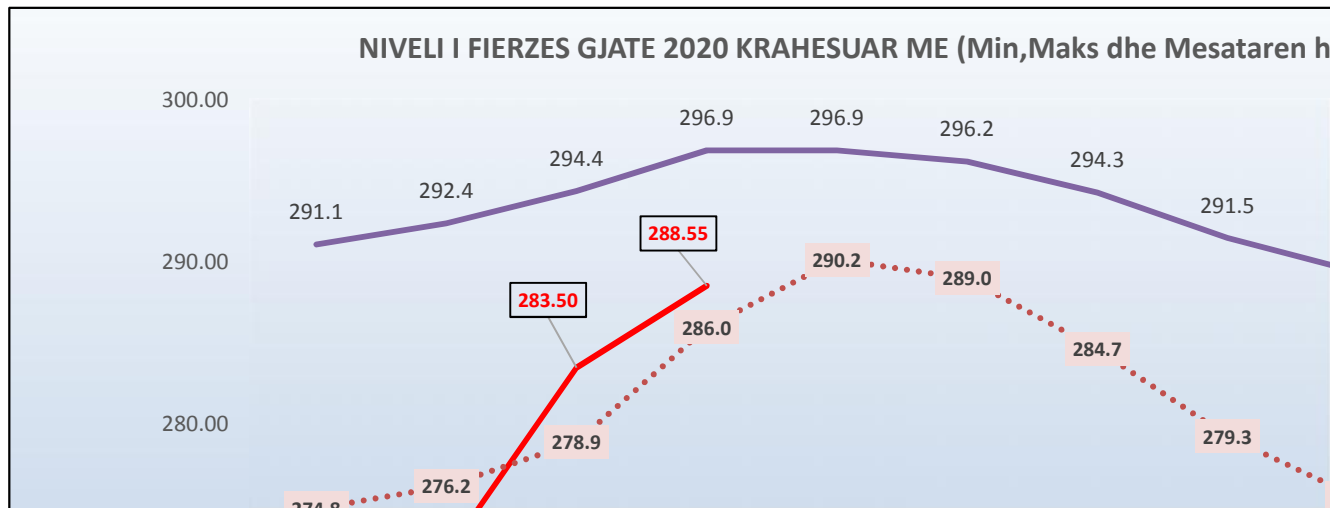
PRODIMI GJATE VITIT 2020 NGA CENTRALET FOTOVOLTAIKE TË LIDHURA NE RRJETIN E SHPERNDARJES (MWh)									
CENTRAL FOTOVOLTAIK	MW	SUBJEKTI	LIDHJA	JANAR	SHKURT	MARS	PRILL	4-M 2020	
UKKO (pa sistemuarme sistem)	1.000	"UKKO"sha (Ujsjell.Kanal.Korce)							
Seman – 2	2	"SEMAN2SUN" sh.p.k	35 kV	212	274	334	387	1,207	
Topojë	1.998	"SONNE" sh.p.k	35 kV	214	273	332	388	1,208	
Topojë 2	1.998	"AED SOLAR" sh.p.k	35 kV	217	273	330	387	1,208	
Topojë (Sheq Marinas)	2	"AGE SUNPOWER" sh.p.k	35 kV	221	274	331	388	1,215	
Topojë (Sheq Marinas) 2	2	"SEMAN SUNPOWER" sh.p.k	35 kV	218	278	334	391	1,221	
Seman 1 solar	2	"SEMAN 1 SOLAR " sh.p.k	35 kV	250	283	323	381	1,238	
Tren Bilisht	2	"RTS " sh.p.k	35 kV	-	-	317	297	614	
Plug, Lushnje	2	"AEE" sh.p.k	10 kv	177	224	289	361	1,051	
	16.996			1,510	1,881	2,591	2,980	8,962	

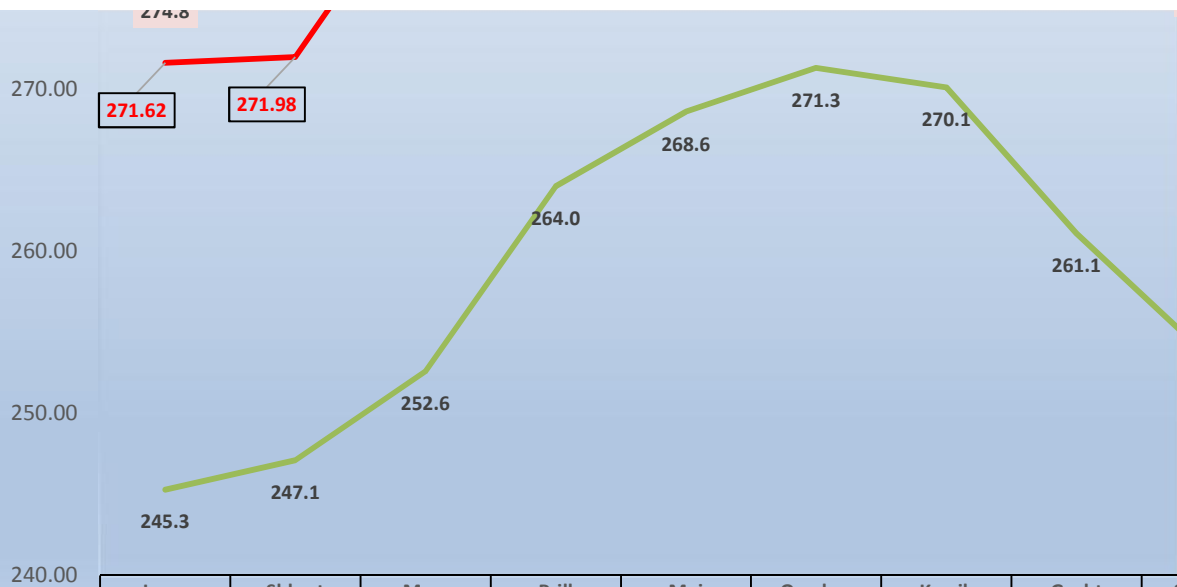
Kapaciteti Instaluar i gjithe prodhuesve **2,473** MW

Burimi: OST sha; FTL sha; (OSHEE Group sha)

	NIVELI I FIERZES 1991-2020							
	Janar	Shkurt	Mars	Prill	Maj	Qershor	Korrik	Gusht
1991	254.4	260.8	268.6	279.9	293.4	296.1	294.0	291.5
1992	278.0	274.1	268.0	278.8	281.0	279.6	275.2	268.7
1993	275.2	265.3	264.7	278.5	280.5	277.3	271.0	261.1
1994	254.4	260.8	268.6	279.9	293.4	296.1	294.0	291.5
1995	253.8	260.3	262.5	275.3	289.0	288.7	284.5	282.2
1996	287.1	288.7	286.5	294.7	295.8	293.1	287.6	282.2
1997	289.4	284.5	281.7	285.2	294.1	292.0	287.0	280.0
1998	273.7	270.0	265.2	278.9	288.1	287.4	281.8	277.6
1999	272.7	275.6	281.5	290.5	295.9	293.3	288.3	279.5
2000	276.4	276.7	276.8	286.9	286.6	280.1	273.5	267.5
2001	253.6	258.2	275.1	282.9	287.6	283.8	273.7	271.1
2002	245.3	247.1	252.6	264.0	268.6	271.3	270.1	267.8
2003	291.1	289.5	286.3	287.0	292.3	290.3	285.9	280.8
2004	284.7	290.8	293.4	296.0	296.2	296.2	293.1	286.3
2005	281.2	281.5	293.3	296.1	295.6	294.1	286.7	277.2
2006	283.5	288.6	294.4	295.9	296.5	295.9	293.8	290.2
2007	256.1	263.7	272.0	276.8	276.8	274.8	268.5	263.6
2008	285.1	289.7	290.9	295.5	295.3	295.7	294.3	288.6
2009	283.6	281.8	283.4	292.5	293.7	292.4	288.0	281.2
2010	290.1	289.2	293.9	296.0	296.3	294.4	291.8	288.6
2011	281.6	274.4	275.0	276.6	281.0	286.1	284.7	279.0
2012	265.8	267.7	262.0	280.2	293.4	294.4	288.4	280.4
2013	278.3	281.5	294.8	296.9	296.9	294.2	289.7	283.6
2014	275.1	277.5	274.6	285.3	292.9	294.9	291.7	286.8
2015	288.7	289.4	292.2	296.3	296.1	293.3	287.5	280.1
2016	289.9	292.4	291.8	296.5	296.2	295.6	290.5	285.4
2017	271.5	277.7	280.9	278.7	281.6	272.4	270.2	268.0
2018	289.7	292.0	295.0	296.5	296.4	296.0	294.0	287.5
2019	267.3	268.2	272.7	279.9	289.9	292.7	287.6	278.5
2020	271.62	271.98	283.50	288.55				

	Janar	Shkurt	Mars	Prill	Maj	Qershor	Korrik	Gusht
2020	271.62	271.98	283.50	288.55				
Mesatarja	274.8	276.2	278.9	286.0	290.2	289.0	284.7	279.3
Minimumi	245.3	247.1	252.6	264.0	268.6	271.3	270.1	261.1
Maksimumi	291.1	292.4	294.4	296.9	296.9	296.2	294.3	291.5



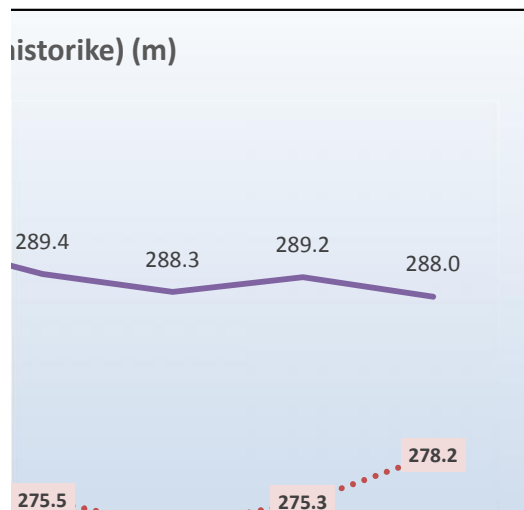


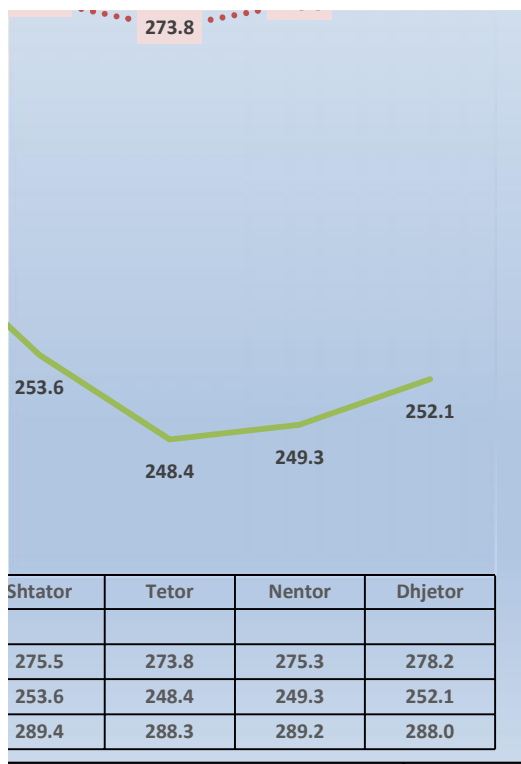
	Janar	Shkurt	Mars	Prill	Maj	Qershor	Korrik	Gusht	S
2020	271.62	271.98	283.50	288.55					
Mesatarja	274.8	276.2	278.9	286.0	290.2	289.0	284.7	279.3	
Minimumi	245.3	247.1	252.6	264.0	268.6	271.3	270.1	261.1	
Maksimumi	291.1	292.4	294.4	296.9	296.9	296.2	294.3	291.5	

B

Shtator	Tetor	Nentor	Dhjetor
289.4	288.3	288.8	285.1
263.9	271.4	281.9	280.6
253.6	249.9	255.6	270.2
289.4	288.3	288.8	285.1
288.2	283.8	279.9	287.5
285.1	284.3	289.2	291.3
272.9	272.4	270.8	277.2
276.0	277.1	279.0	277.1
271.0	257.6	263.6	276.9
261.6	248.4	249.3	252.1
269.2	263.6	263.2	252.1
274.3	286.1	285.3	284.0
276.0	282.6	285.6	283.3
281.1	280.0	286.1	288.0
266.5	256.9	253.6	279.0
285.3	278.7	266.2	256.2
261.8	261.1	275.8	282.1
283.9	280.9	285.2	286.5
276.2	271.6	266.3	280.1
284.9	285.2	284.3	287.5
273.9	268.2	261.6	264.5
261.4	261.6	269.0	276.6
280.8	281.4	282.5	276.1
285.5	285.0	284.8	286.3
272.1	275.4	278.9	275.9
283.3	288.4	288.9	281.6
271.0	264.6	269.6	289.9
277.9	270.2	266.5	267.3
274.2	268.6	273.2	275.6

Shtator	Tetor	Nentor	Dhjetor
275.5	273.8	275.3	278.2
253.6	248.4	249.3	252.1
289.4	288.3	289.2	288.0



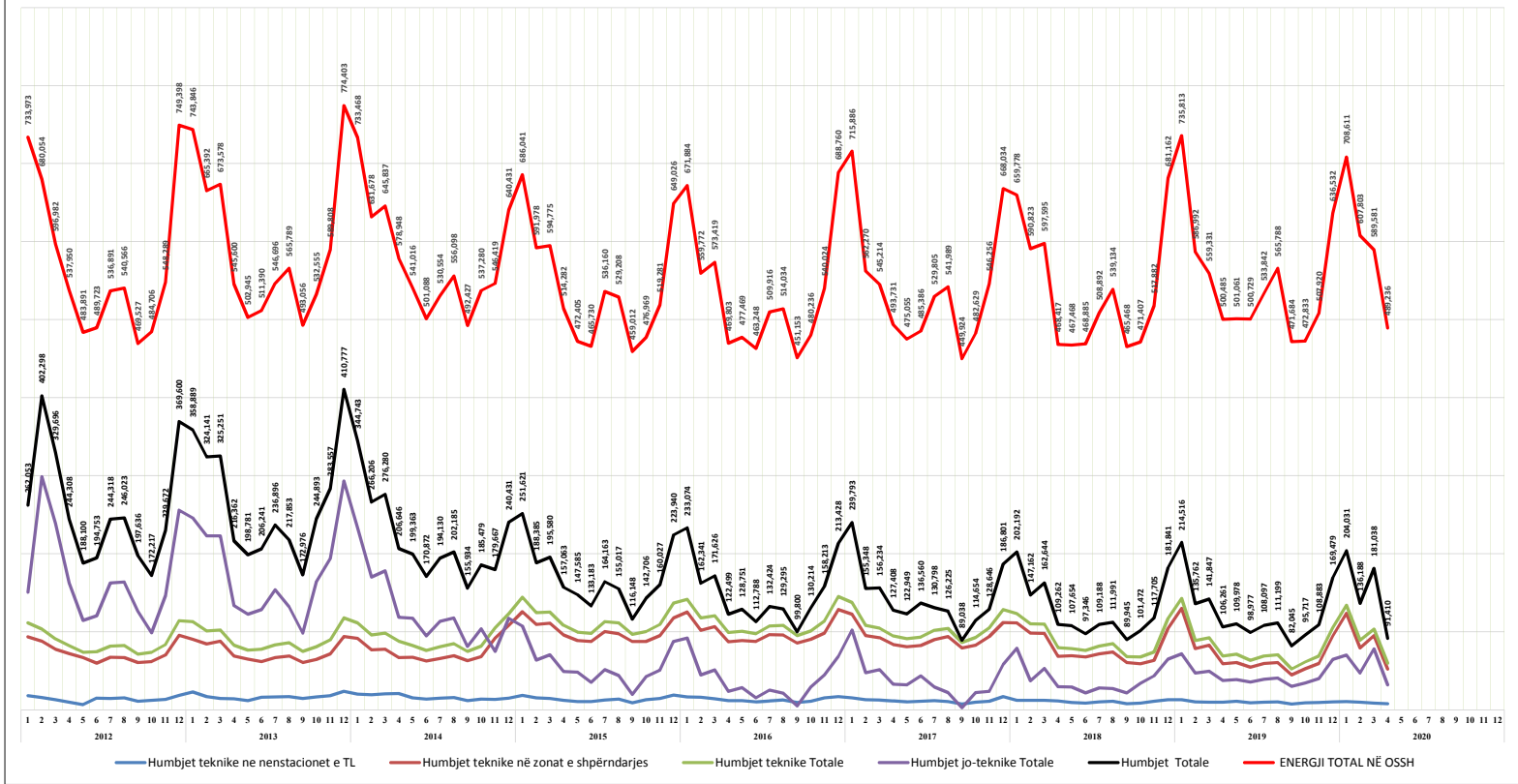


burimi OST sha; KESH sha

HUMBJET (SHPËRNDARJE) 2009-2020

	2012	2013	2014	2015	2016	2017	2018	2019	2020
Humbjet teknike ne nenvastoniet e TL	18,674	15,694	15,441	15,694	15,694	15,694	15,694	15,694	15,694
Humbjet teknike në zonat e shpërndarjes	111,545	111,545	111,545	111,545	111,545	111,545	111,545	111,545	111,545
Humbjet teknike Totale	130,219	127,239	126,986	127,239	127,239	127,239	127,239	127,239	127,239
Humbjet jo-teknike Totale	246,053	246,053	246,053	246,053	246,053	246,053	246,053	246,053	246,053
Humbjet Totale	376,272	373,292	373,039	373,292	373,292	373,292	373,292	373,292	373,292
ENERGJI TOTAL NË OSSH	733,973	733,973	733,973	733,973	733,973	733,973	733,973	733,973	733,973

HUMBJET NË SISTEMIN E SHPËRNDARJES SË ENERJISË ELEKTRIKE PËR PERIUDHËN 2012-2020 (MWh)

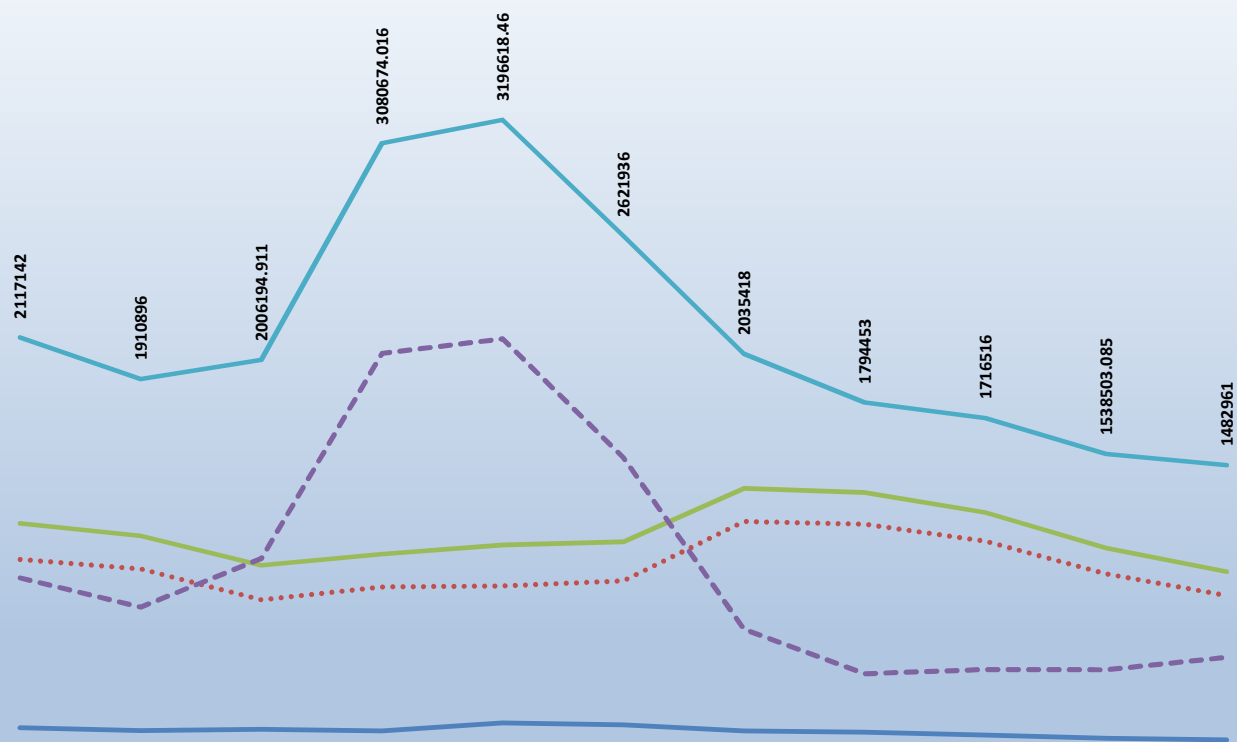


Burimi: OSSH sha / (OSHEE Group sha)

HUMBJET NE RRJETIN E SHPERNDARJES 2009-2020 (MWh)

	2009	2010	2011	2012	2013	2014	2015	2016	2017	2018	2019	2020 Mujori	(4)
HUMBJE TEKNIKE NE TL (N/ST)	178,738	163,546	170,937	161,831	201,684	193,208	162,725	155,629	141,707	125,974	117,739	36,151	
HUMBJE TEKNIKE NE ZONAT E OSSH	1,015,450	968,535	814,826	879,616	884,360	908,416	1,203,793	1,190,872	1,106,007	944,587	836,561	350,019	
TOTALI I HUMBJEVE TEKNIKE OSSH	1,194,188	1,132,081	985,763	1,041,447	1,086,044	1,101,624	1,366,518	1,346,501	1,247,714	1,070,560	954,300	386,170	
HUMBJE JOTOKNIKE OSSH	922,954	778,815	1,020,432	2,039,227	2,110,575	1,520,312	668,900	447,952	468,802	467,943	528,661	226,497	
TOTALI I HUMBJEVE OSSH	2,117,142	1,910,896	2,006,195	3,080,674	3,196,618	2,621,936	2,035,418	1,794,453	1,716,516	1,538,503	1,482,961	612,667	

HUMBJET NE RRJETIN E SHPERNDARJES 2009-2019 (MWh)

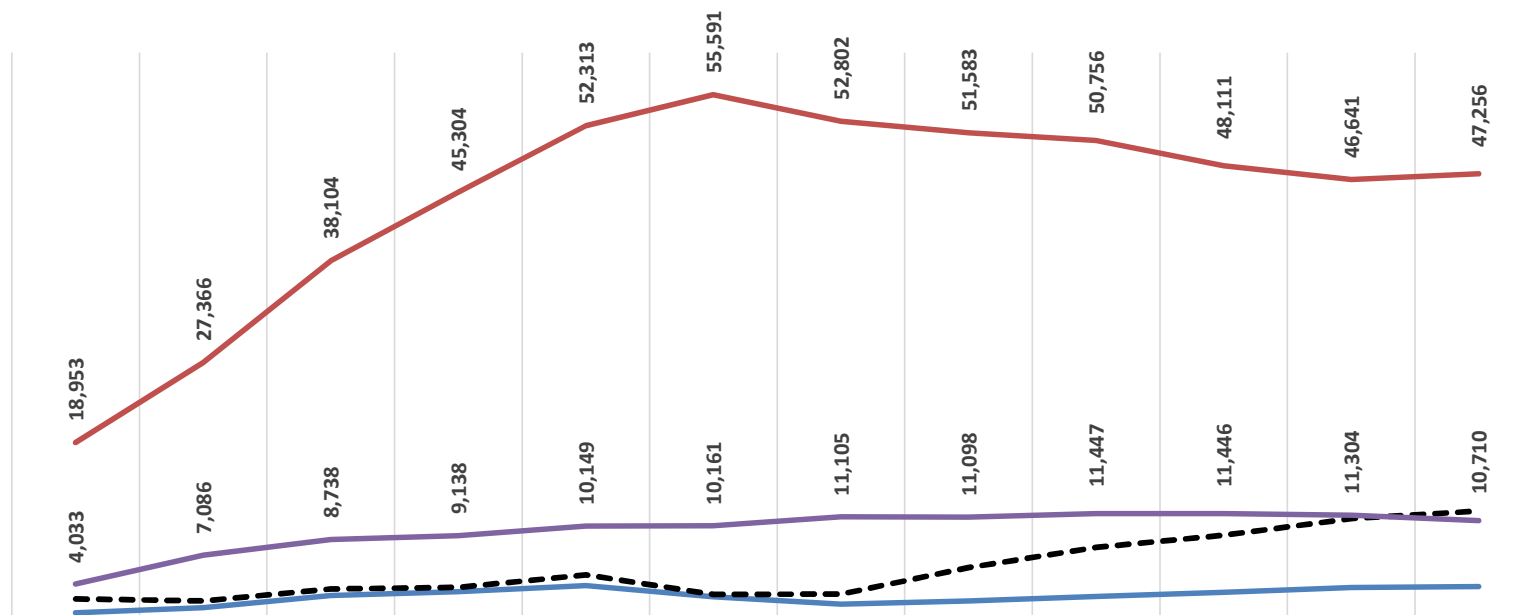


	2009	2010	2011	2012	2013	2014	2015	2016	2017	2018	2019
HUMBJE TEKNIKE NE TL (N/ST)	178738	163546	170937.2189	161830.6504	201683.9506	193208	162725	155629	141707	125973.7158	117739
HUMBJE TEKNIKE NE ZONAT E OSHEE	1015450	968534.8354	814825.7159	879616.3656	884359.9722	908416	1203793	1190872	1106007	944586.5001	836561
TOTALI I HUMBJEVE TEKNIKE OSHEE	1194188	1132080.835	985762.9348	1041447.016	1086043.923	1101624	1366518	1346501	1247714	1070560.216	954300
HUMBJE JOTOKNIKE OSHEE	922954	778815.1646	1020431.977	2039227	2110574.537	1520312	668900	447952	468802	467942.8686	528661
TOTALI I HUMBJEVE OSHEE	2117142	1910896	2006194.911	3080674.016	3196618.46	2621936	2035418	1794453	1716516	1538503.085	1482961

ECURIA E GJENDJES DEBITORE NDAJ OSHEE 31 DHJETOR 2009 - 30 Prill 2020 (000 000 LEKË)

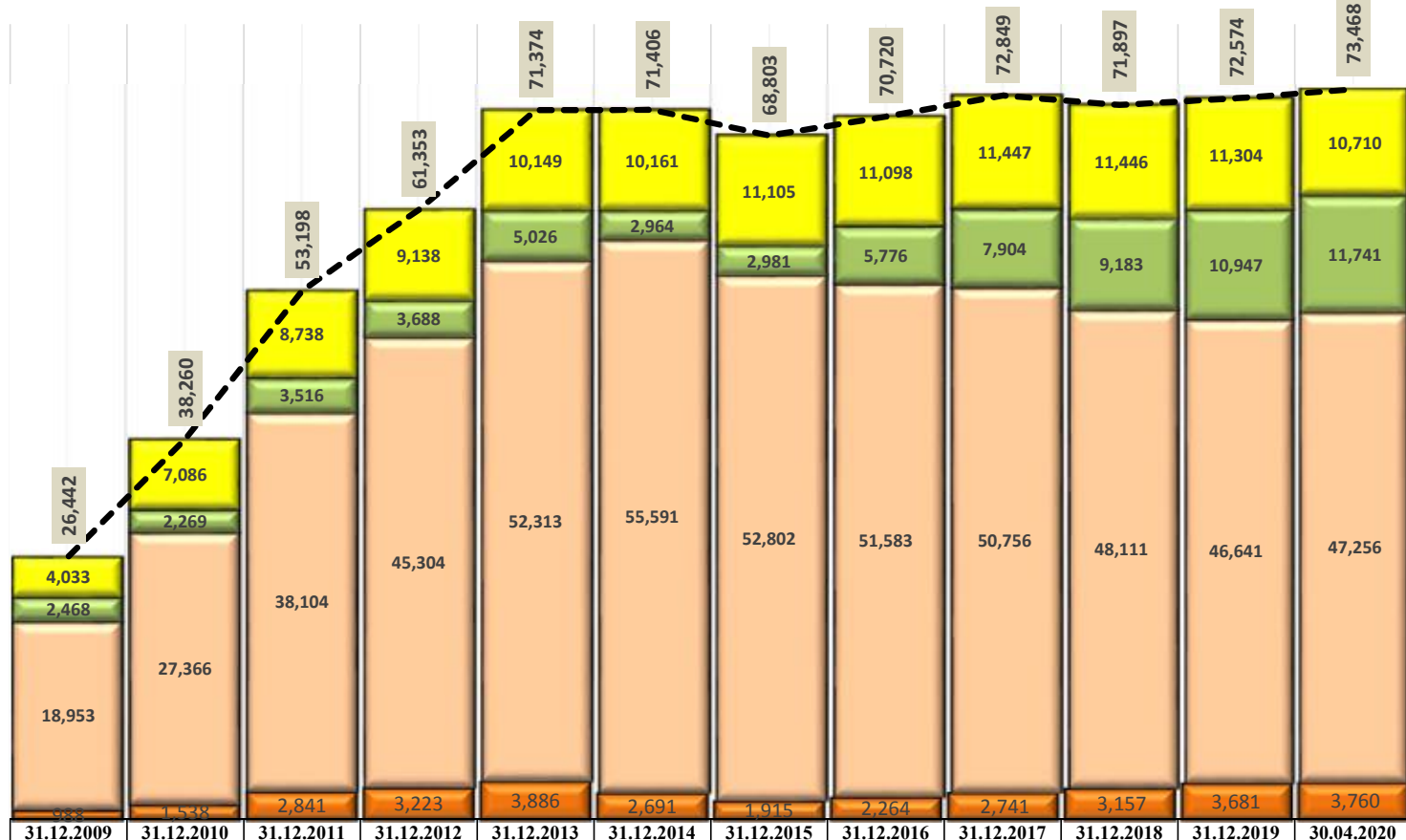
	31.12.2009	31.12.2010	31.12.2011	31.12.2012	31.12.2013	31.12.2014	31.12.2015	31.12.2016	31.12.2017	31.12.2018	31.12.2019	30.04.2020
Buxhetore	988	1,538	2,841	3,223	3,886	2,691	1,915	2,264	2,741	3,157	3,681	3,760
Familjare	18,953	27,366	38,104	45,304	52,313	55,591	52,802	51,583	50,756	48,111	46,641	47,256
JoBuxhetore	2,468	2,269	3,516	3,688	5,026	2,964	2,981	5,776	7,904	9,183	10,947	11,741
Privat	4,033	7,086	8,738	9,138	10,149	10,161	11,105	11,098	11,447	11,446	11,304	10,710
Total	26,442	38,260	53,198	61,353	71,374	71,406	68,803	70,720	72,849	71,897	72,574	73,468

**ECURIA E GJENDJES DEBITORE NDAJ OPERATORIT TE SHPERNDARJES
31 DHJETOR 2009 - 30 PRILL 2020 SIPAS KLIENTËVE
(000 000 LEKË)**



	31.12.2009	31.12.2010	31.12.2011	31.12.2012	31.12.2013	31.12.2014	31.12.2015	31.12.2016	31.12.2017	31.12.2018	31.12.2019	30.04.2020
Buxhetore	988	1,538	2,841	3,223	3,886	2,691	1,915	2,264	2,741	3,157	3,681	3,760
Familjare	18,953	27,366	38,104	45,304	52,313	55,591	52,802	51,583	50,756	48,111	46,641	47,256
JoBuxhetore	2,468	2,269	3,516	3,688	5,026	2,964	2,981	5,776	7,904	9,183	10,947	11,741

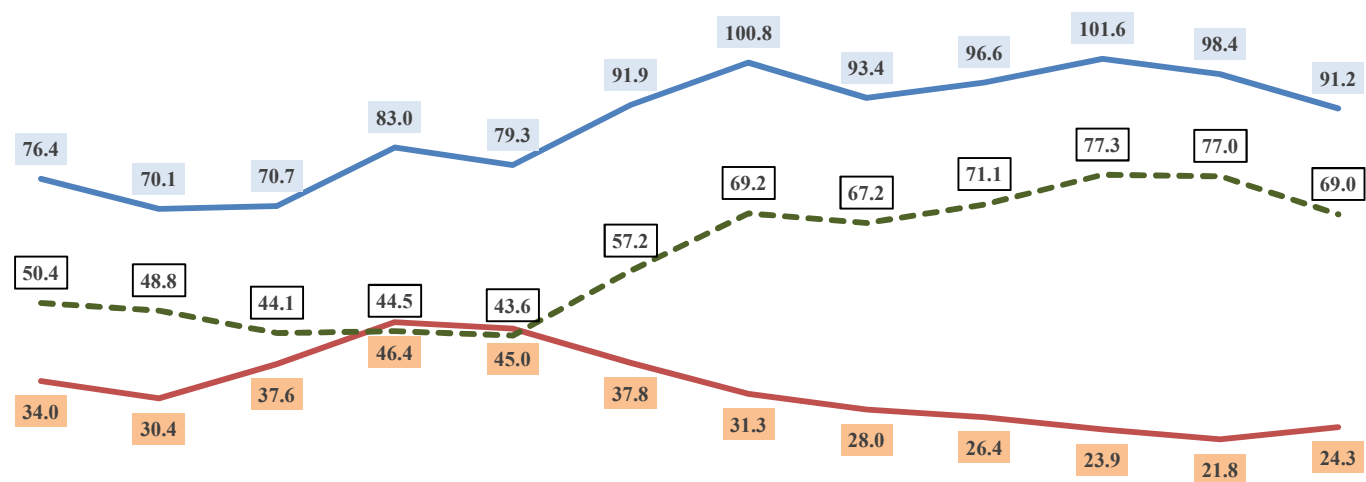
ECURIA E GJENDJES DEBITORE NDAJ FSHU / OSHEE Group sha
31 DHJETOR 2009 - 30 PRILL 2020 SIPAS KLIENTËVE
(000 000 LEKË)



Privat	4,033	7,086	8,738	9,138	10,149	10,161	11,105	11,098	11,447	11,446	11,304	10,710
JoBuxhetore	2,468	2,269	3,516	3,688	5,026	2,964	2,981	5,776	7,904	9,183	10,947	11,741

	2009	2010	2011	2012	2013	2014	2015	2016	2017	2018	2019	2020 (4-M)
Arketimi	76.4	70.1	70.7	83.0	79.3	91.9	100.8	93.4	96.6	101.6	98.4	91.2
Humbja	34.0	30.4	37.6	46.4	45.0	37.8	31.3	28.0	26.4	23.9	21.8	24.3
Efektiviteti	50.4	48.8	44.1	44.5	43.6	57.2	69.2	67.2	71.1	77.3	77.0	69.0

**Efektiviteti i shitjeve ne Sistemin e Shperndarjes (%)
2009-2020**



	2009	2010	2011	2012	2013	2014	2015	2016	2017	2018	2019	2020 (4-M)
Arketimi	76.4	70.1	70.7	83.0	79.3	91.9	100.8	93.4	96.6	101.6	98.4	91.2
Humbja	34.0	30.4	37.6	46.4	45.0	37.8	31.3	28.0	26.4	23.9	21.8	24.3
Efektiviteti	50.4	48.8	44.1	44.5	43.6	57.2	69.2	67.2	71.1	77.3	77.0	69.0

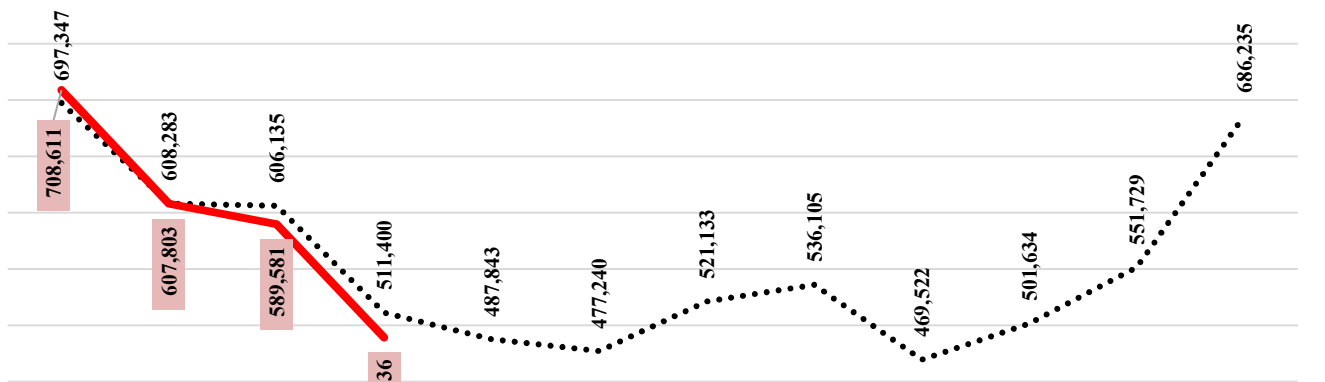
Energji Totale ne Operatorin e Sistemit te Shperndarjes 2009-2020 ne MWh

	Janar	Shkurt	Mars	Prill	Maj	Qershori	Korrik	Gusht	Shtator	Tetor	Nentor	Dhjetor	VITI
2009	644,987	568,719	589,279	462,709	448,118	427,694	467,863	493,772	439,604	489,635	557,554	639,797	6,229,731
2010	675,343	608,940	610,583	506,275	476,500	464,120	499,241	512,024	460,893	509,793	532,126	660,665	6,516,503
2011	708,264	623,208	634,087	536,286	533,564	495,139	545,315	567,282	512,979	551,132	619,655	710,870	7,037,781
2012	733,973	680,054	596,982	537,950	483,891	489,723	536,891	540,566	469,527	484,706	548,289	749,398	6,851,949
2013	743,846	665,392	673,578	545,600	502,945	511,390	546,696	565,789	493,056	532,555	589,808	774,403	7,145,060
2014	733,468	631,678	645,837	578,948	541,016	501,088	530,554	556,098	492,427	537,280	546,419	640,431	6,935,244
2015	686,041	591,978	594,775	514,282	472,405	465,730	536,160	529,208	459,012	476,969	519,281	649,026	6,494,867
2016	671,884	559,772	573,419	469,803	477,468	463,248	509,916	514,034	451,153	480,236	540,024	688,760	6,399,717
2017	715,886	562,270	545,214	493,731	475,055	485,386	529,805	543,145	451,103	482,629	546,256	667,841	6,498,322
2018	659,778	590,823	597,595	468,417	467,468	468,885	508,892	539,134	465,468	471,407	517,882	681,162	6,436,911
2019	735,813	586,992	559,331	500,485	501,061	500,729	533,842	565,788	471,684	472,833	507,920	639,953	6,576,432
2020	708,611	607,803	589,581	489,236									

	Janar	Shkurt	Mars	Prill	Maj	Qershori	Korrik	Gusht	Shtator	Tetor	Nentor	Dhjetor
Mesatarja	697,347	608,283	606,135	511,400	487,843	477,240	521,133	536,105	469,522	501,634	551,729	686,235
2020	708,611	607,803	589,581	489,236								
Diferenca	11,264	(480)	(16,554)	(22,164)								

Burimi OSHEE sha

MESATARJA 10 VJEÇARE E ENERGJISË TOTALE NË RRJETIN E SHPËRNDARJES SIPAS MUAJVE TË VITIT (MWh)



NR	KLIENDET E KUALIFIKUAR	KLIENDET E KUALIFIKUAR PER VITIN 2020											
		Energjia e faturuar ne [MWh]											
		Janar	Shkurt	Mars	Prill	Maj	Qershor	Korrik	Gusht	Shtator	Tetor	Nentor	Dhjetor
1	N/ST i GSA EL 110kV-T1/694	91	112	108	249								559
2	N/ST i GSA EL 110kV-T2/960	0	0	0	0								0
3	TEC Ballsh	78	72	74	67								290
4	Titan T1,T2	5,181	8,943	8,934	3,396								26,455
5	FERROKROM	6,659	6,474	6,657	6,468								26,257
6	FUSHE KRUJE 220kV-T2/058	8,539	4,098	6,023	6,012								24,672
7	N/ST 220/6,3Colacent-T1/336	849	1,089	824	831								3,593
8	EL220-L220KURUM/337	14,170	27,621	24,147	18,114								84,052
9	Lajthiza T1/742	34	326	351	242								954
10	F.Arrez-T3/653	1,436	1,399	1,499	1,363								5,697
11	N/ST i AES EL 110kV-T1/690	3,745	3,471	3,647	3,498								14,362
12	N/ST I AES EL 110kV-T2/692	3,784	3,453	3,651	3,502								14,390
13	ENERGJI ASHTA (ASHTA 1) Konsum	0	0	0	0								0
14	ENERGJI ASHTA (ASHTA 2) Konsum	0	0	0	0								0
15	ENERGJI ULEZ (ULEZ) Konsum	6	23	3	0								31
16	ENERGJI SHKOPET (SHKOPET) Konsum	0	0	0	0								0
17	ENERGJI BISTRICE (BISTRICE) Konsum	0	0	0	0								0
18	ENERGJI PESHQESH (AYEN) Konsum	35	2	7	31								75
19	ENERGJI FANG (AYEN) Konsum	41	27	26	35								129
20	ENERGJI BANJA (DEVOLL HPP) Konsum	21	19	17	19								76
21	ENERGJI HEC MOGLICE (DEVOLL HPP) Konsum	381	330	306	270								1,287
	Totali mujor	44,670	57,130	55,966	43,826	0	0	0	0	0	0	0	201,592

pa rakorduar nga OST

Burimi: OST sha

Devijimet ne Programin e Interkoneksionit 2020 (MWh)

Minus = Hyrje

Plus = Dalje

Data	Janar	Shkurt	Mars	Prill	Maj	Qershor	Korrik	Gusht	Shtator	Tetor	Nentor	Dhjetor	2020
1	131	159	-428	-108									-247
2	406	567	1225	28									2,227
3	216	35	1211	-44									1,419
4	120	227	782	-26									1,102
5	148	1019	1384	182									2,733
6	51	289	50	50									441
7	-22	17	1361	14									1,370
8	-61	667	1340	45									1,991
9	-69	-93	637	90									565
10	-69	-295	471	100									208
11	-28	458	-204	95									321
12	-67	1211	-67	96									1,173
13	-13	601	237	44									869
14	-40	127	335	-6									417
15	-78	179	390	115									606
16	-87	701	393	88									1,095
17	-14	617	174	69									846
18	-17	848	8	116									954
19	-130	423	44	214									551
20	252	489	110	124									976
21	109	864	206	69									1,247
22	-112	171	310	107									476
23	77	204	4	74									359
24	322	349	8	29									709
25	-10	1010	-18	56									1,037
26	80	1098	-28	23									1,172
27	1095	945	2	0									2,041
28	843	334	-13	75									1,240
29	1582	558	123	103									2,365
30	1851		3	36									1,891
31	512		-6										506
Total	6977	13,778	10045	1859									32,658

Burimi OST sha

Tabela me te dhenat e Alokimit te ATC 2020

Ankandi	Periudha	Shqiperi - Mali Zi						Shqiperi - Greqi						Shqiperi - Kosove					
		Ankand		Ankand		Cmimi Ankandit		Ankand		Ankand		Cmimi Ankandit		Ankand		Ankand		Cmimi Ankandit	
		Export	Import	Export	Import	Export	Import	Export	Import	Export	Import	Export	Import	Export	Import	Export	Import	Export	Import
		[MW]	[MW]	[MW]	[MW]	[Euro/MWh]	[Euro/MWh]	[MW]	[MW]	[MW]	[MW]	[Euro/MWh]	[Euro/MWh]	[MW]	[MW]	[MW]	[MW]	[Euro/MWh]	[Euro/MWh]
Janar	01.01.2020-31.01.2020	250	250	250	250	0.07	1.11	100	100	99	100	4.87	0.34	125	125	125	125	0.12	0.48
Shkurt	01.02.2020-29.02.2020	200	250	199	250	0.06	1.86	125	125	125	125	2.67	0.61	125	125	125	125	0.31	1.49
Mars	01.03.2020-15.03.2020	100	100	99	100	0.12	3.16	100	100	100	99	3.52	0.09	125	125	125	125	0.1	1.33
	16.03.2020-20.03.2021	0	0	0	0	50	50								2.94				
	21.03.2020-15.03.2022	100	100	99	100	0.12	3.16								125		125		1.24
Prill	01.04.2020-03.04.2020	0	0	0	0	0	0	100	100	100	100	5.91	0.06	105	105	105	105	0.16	0.15
	04.04.2020-13.04.2020	100	100	100	100	0.24	2.38												
	14.04.2020-30.04.2020																		

Burimi: OST sha

Tabela e Faturave te detyrime midis Furnizuesve te kualifikuar dhe OST Shtu per vitin 2020

Pale Përgjegjëse Balancuese	D I S B A L A N C A T									
	JANAR		SHKURT		MARS		PRILL		TOTALI 4-Mujori 2020	
	Dit. Negative [MWh]	Dit. Pozitive [MWh]	Dit. Negative [MWh]	Dit. Pozitive [MWh]	Dit. Negative [MWh]	Dit. Pozitive [MWh]	Dit. Negative [MWh]	Dit. Pozitive [MWh]	Dit. Negative [MWh]	Dit. Pozitive [MWh]
KURUM	996.13	551.56	624.97	1,204.56	780.97	829.47	1,204.19	277.07	3,606.25	2,862.66
DEVOLL	36.19	15.97	9.17	6.78	182.40	692.35	22.25	95.41	250.11	810.51
ENERGIA GAS & POWER	427.31	3.60	482.98		513.62	0.30	517.23	0.01	1,941.13	1.91
AYEN AS ENERJII	97.96	117.11	25.78	116.20	32.97	118.33	60.98	31.10	217.69	382.73
ISA	457.93	1,388.82	297.37	480.10	630.44	909.04	204.27	942.15	1,590.00	3,720.12
GEN4	315.85	93.47	282.18	217.99	323.03	264.79	360.85	96.76	1,281.51	763.02
AES	488.31	282.53	640.89	95.98	1,370.15	146.57	679.83	189.55	3,172.30	714.62
ASHITA	760.45	836.47	232.74	717.09	1,014.03	1,055.83	1,045.60	1,285.42	3,052.83	3,894.81
FTL (OSHEE Grup)	3,277.60	23,604.77	7,904.51	16,208.93	5,633.07	28,846.58	7,229.12	14,410.02	24,044.29	83,070.30
BILANCO OST Shtu PA HUMBLET (Laba)		73.00								73.00
BESH (Pale Përgjegjëse Balancuese)	58.42	15.14	12.16	72.88	6.99	120.39	-	250.27	77.57	458.67
KASTRATI ENERGY	235.48	63.81	169.39	61.94	285.31	100.97	387.70	111.26	1,077.87	337.98
BYLLIS Tec Ballsh (Pa kontrate Furnizimi)	77.89	-	71.89	-	73.80	-	66.52	-	290.10	-
OST - HUMBLET ne Transmetim	1,566.60	674.88	4,160.39	679.10	2,843.90	3,907.38	2,103.76	679.63	10,674.55	5,941.00
Ofruesi i Sherbimit te Balancimit	Uj- Gjenerimi [MWh]	Rreze Gjenerimi [MWh]	Uj- Gjenerimi [MWh]	Rreze Gjenerimi [MWh]	Uj- Gjenerimi [MWh]	Rreze Gjenerimi [MWh]	Uj- Gjenerimi [MWh]	Rreze Gjenerimi [MWh]	Uj- Gjenerimi [MWh]	Rreze Gjenerimi [MWh]
KESH	14,696.24	3,591.95	3,146.96	5,271.06	18,049.61	4,745.55	12,456.67	8,628.04	48,349.48	22,236.60
TOTALI	23,492.38	31,313.07	18,061.36	25,132.61	31,740.19	41,827.55	26,333.06	26,996.69	99,626.99	125,269.92
Disbalancat mujore [MWh]		7,820.69		7,071.24		10,087.36		663.63		25,642.93

Burimi: OST shtu

Regjistri Pjesmarresve te Tregut		PRODHUES		P
		TREGTUES		T
30 PRILL 2020 (aktiv)		FURNIZUES		F
		FURNIZUES I SHËRBIMIT UNIVERSAL		FSHU
		SHPERNDARJE		SH
Nr	Emri i Subjektit	EIC Code	data e regjistrimit	Roli ne TEE
1	Albanian Energy Supplier	54X-AEG-02-1603G	26.05.2015	T; F
2	AXPO Albania	23X--150330-AA-K	28.01.2020	T
3	Ayen AS Energji	23X--150416-A--N	17.12.2014	P; T; F
4	Ayen Energy Trading	23X--140426-AY-W	04.05.2014	T; F
5	Danske Commodities Albania	23X--121120DCALG	30.10.2012	T
6	Devoll Hydropower	23X--150409-DHP5	11.06.2015	T; F
7	Energija doo Veternik	54X-EDOOV-15-020	15.12.2015	T; F
8	Energji Ashta	54X-HECASHTA-059	25.05.2012	P
9	Energy Supply-AL	34X-0000000017-C	15.05.2013	T; F
10	Erdat Lura	54X-HEC-LURA-069	17.09.2013	P
11	GEN-I Tirana	23X---120709GEN0	31.01.2011	T; F
12	Gjo-Spa Power	54X-HEC-LAPAJ075	17.09.2013	P
13	Green Energy Trading Albania	23X--150702GE--3	01.07.2015	T
14	Grupi Sistemeve Automatikë	22XGSA-----N	09.05.2011	T; F
15	Korporata Elektroenergjitike Shqiptare	23X--130918APC-M	25.04.2011	P; T
16	Korporata Elektroenergjitike Shqiptare	23X--130918APC-M	16.12.2019	F
17	KURUM International	23X--131115KI--1	17.12.2013	P; T; F
18	NOA Energy Trade	23X--150630-NE-6	10.03.2015	T
19	Stravaj Energy	54X-STRAVAJ-E086	25.04.2014	P; T
20	WENERG	54X-WENERG---10E	10.06.2015	P
21	YLLIAD	29XYLLIAD-AL---W	03.03.2011	T
22	Grid Energy	54X-GRID-ENERGYR	05.04.2017	T; F
23	GAEA-Energjia Alternative e Gjelber	54X-GAEA11-1501R	07.12.2015	T; F
24	Energy Financing Team Tirana	54X-EFT-TIRANA-V	24.08.2017	T; F
25	Alpiq Energy Albania	23X--141204AEA-T	29.04.2011	T; F
26	URADRIN	54X-100ID101218J	10.08.2018	T
27	Energia Gas and Power Albania shpk	23x-150309-LT-Y	22.10.2018	T; F
28	RENRY Trading Group	54X-10IRN102618R	12.11.2018	T; F
29	Ener Trade shpk	54X-10 IET091118	21.12.2018	T; F
30	Kastrati Energy	54X-11LKE250319U	25.03.2019	T; F
31	Alb Energy Market	54X-ALBEM-----11Y	07.07.2017	T; F
32	Power and Gas Operations	54X-101PG2307196	23.07.2019	T
33	ENSKO Trading (Albania)shpk	54X-110IESA1019G	02.12.2019	T
34	Furnizues i Tregut të Lirë -FTL sha	54X-1010IFTO220P	19.02.2020	T; F
35	Furnizues i Sherbimit Universal-FSHU sha	54X-0101IFSHO22Q	19.02.2020	FSHU
36	Operatori i Sistemit të Shpërndarjes-OSSH sha	54X-101010IOSSOU	19.02.2020	SH

Burimi OST sha

Transaksionet e energjise elektrike te Pjesemarrrese te Tregut ne [MWh] per 2020

Nr.	Subjekti	Lloji transaksionit	Janar	Shkurt	Mars	Prill	Total [MWh]	
1	DEVOLLI HP	Shkembime Cross-Border	AL-GR Greece - IN	-43	-19	-54	-67	-233
			AL-RS (KS) Kosovo - IN	-604	0	0	0	-604
			AL-ME Monte Negro - IN	-7,197	-28,024	-15,639	-10,712	-61,572
			Total IN	-7,844	-28,043	-15,693	-11,329	-62,909
			AL-GR Greece - OUT	14,325	18,833	24,169	15,687	73,014
			AL-RS (KS) Kosovo - OUT	154	0	764	3,331	4,249
			AL-ME Monte Negro - OUT	7,801	128	2,457	9,027	19,413
		Total OUT	22,280	18,961	27,390	28,045	96,676	
		Prodhim Devolli HP	14,441	8,143	26,414	27,488	76,486	
		Total Prodhim	14,441	8,143	26,414	27,488	76,486	
		Shitje FTL		15,792	13,875	5,424	35,091	
		Shitje GEN	31		343	408	782	
		Shitje OST		1,433		4,940	6,373	
		Total transaksione	31	17,225	14,218	10,772	42,246	
2	AYEN Energy Trading	Shkembime Cross-Border	AL-GR Greece - IN	0	-125	0	0	-125
			AL-RS (KS) Kosovo - IN	-360	0	0	0	-360
			AL-ME Monte Negro - IN	-3,024	-2,010	-951	-634	-6,619
			Total IN	-3,384	-2,135	-951	-634	-7,104
			AL-GR Greece - OUT	0	2,010	797	0	2,807
			AL-RS (KS) Kosovo - OUT	0	0	0	0	0
			AL-ME Monte Negro - OUT	0	153	465	295	913
		Total OUT	0	2,163	1,262	295	3,720	
		Blerje AES				-174	-174	
		Shitje DANSKE				16	16	
		Shitje ENER TRADE			8,147	9,328	17,475	
		Shitje GEN-I				4	4	
		Shitje GETA	360				360	
		Shitje EFT TRN	9,750	2,084	11,004		22,838	
		Blerje AYEN AS Energji	-14,070	-23,472	-19,440	-9,013	-65,995	
		Shitje AYEN AS Energji			152	4	156	
		Shitje GRID Energy		5,040			5,040	
		Shitje FTL	7,344	10,560			17,904	
		Shitje OST		5,760			5,760	
		Total transaksione	3,384	-28	-311	339	3,384	
		3	AYEN AS Energji	Shkembime Cross-Border	AL-GR Greece - IN	0	0	0
AL-RS (KS) Kosovo - IN	-6,641				-8,850	-6,689	-10,236	-32,416
AL-ME Monte Negro - IN	0				0	0	0	0
Total IN	-6,641				-8,850	-6,689	-10,236	-32,416
AL-GR Greece - OUT	10,506				4,974	15,285	9,234	39,999
AL-RS (KS) Kosovo - OUT	11,635				14,240	12,808	4,826	43,509
AL-ME Monte Negro - OUT	0				0	0	0	0
Total OUT	22,141			19,214	28,093	14,060	83,508	
Prodhim HEC PESHQESH+HEC FANG	31,061.3			35,340.7	42,445.4	15,906	124,753	
Total Prodhim	31,061.3			35,340.7	42,445.4	15,906	124,753	
Shitje Konsumatoreve te Kualifikuar							0	
Shitje Kasratrati Energy	1,491.3			1,504.7	1,753.4	3,072.7	7,822	
Shitje AYEN Energy Trading	14,070.0			23,472.0	19,440.0	9,013	65,995	
Blerje AYEN Energy Trading					-152	-4	-156	
Total transaksione	15,561.3	24,976.7	21,041.4	12,082	73,661			
4	ENERGJI ASHTA	Shkembime Cross-Border	AL-GR Greece - IN	0	0	0	0	0
			AL-RS (KS) Kosovo - IN	0	0	0	0	0
			AL-ME Monte Negro - IN	0	0	0	0	0
			Total IN	0	0	0	0	0
			AL-GR Greece - OUT	0	0	0	0	0
			AL-RS (KS) Kosovo - OUT	0	0	0	0	0
			AL-ME Monte Negro - OUT	0	0	0	0	0
Total OUT	0	0	0	0	0			
Prodhim	18,563	15,636	15,308	8,333	57,840			
Total Prodhim	18,563	15,636	15,308	8,333	57,840			
Shitje FTL	18,563	15,636	15,308	8,333	57,840			
Total transaksione	18,563	15,636	15,308	8,333	57,840			
5	GEN-I	Shkembime Cross-Border	AL-GR Greece - IN	-904	-2,276	-4,550	-4,260	-11,990
			AL-RS (KS) Kosovo - IN	-5,824	-28,467	-9,273	-1,665	-48,229
			AL-ME Monte Negro - IN	-75,296	-51,973	-29,528	-26,417	-183,214
			Total IN	-82,024	-82,716	-43,351	-32,342	-240,433
			AL-GR Greece - OUT	30,133	30,101	25,617	15,147	100,998
			AL-RS (KS) Kosovo - OUT	20,698	13,221	5,372	8,239	47,530
			AL-ME Monte Negro - OUT	4,414	3,922	5,359	5,321	19,016
		Total OUT	55,245	47,244	36,348	28,707	167,544	
		Shitje Konsumatoreve te Kualifikuar	-4,959	8,879	8,964	3,132	25,936	
		Shitje GSA	20,700	25,290	16,000		61,990	
		Blerje Devoll	-31		-343	-408	-782	
		Shitje OST	474	3,390	4,320	1,058	9,242	
		Blerje AYEN Energy Trading				-4	-4	
		Blerje KURUM		-10,697	-27,374	-143	-38,214	
Shitje KURUM	677	8,610	5,434		14,721			
Total transaksione	26,779	35,472	7,003	3,635	72,889			
6	GSA	Shkembime Cross-Border	AL-GR Greece - IN	0	0	0	0	0
			AL-RS (KS) Kosovo - IN	-29,766	-17,664	-30,728	-36,412	-114,570
			AL-ME Monte Negro - IN	-14,466	-40,302	-24,143	-24,039	-102,950
			Total IN	-44,232	-57,966	-54,871	-60,451	-217,520
			AL-GR Greece - OUT	0	0	0	1,440	1,440
			AL-RS (KS) Kosovo - OUT	14,812	0	0	3,152	17,964
			AL-ME Monte Negro - OUT	480	0	0	237	717
		Total OUT	0	13,440	0	0	20,121	
		Shitje Konsumatoreve te Kualifikuar	12,998	8,328	10,277	9,079	40,682	
		Shitje FTL	69,720	74,928	60,594	49,328	254,570	
		Shitje OST	1,869			4,320	6,189	
		Shitje AES				12,680	12,680	
		Blerje KURUM	-28,227			-19,785	-48,012	
		Blerje GETA	-1,920				-1,920	
Blerje DANSKE	-4,800				-4,800			
Blerje GEN-I	-20,700	-25,290	-16,000		-62,000			
Total transaksione	28,940	57,966	54,871	55,622	197,399			
7	DANSKE COMMODITIES	Shkembime Cross-Border	AL-GR Greece - IN	-4,021	-855	-925	-2,378	-8,179
			AL-RS (KS) Kosovo - IN	-19,209	-745	-4,314	-765	-25,033
			AL-ME Monte Negro - IN	-1,758	-2,058	-1,084	-2,852	-7,752
			Total IN	-24,988	-3,658	-6,323	-5,995	-40,964
			AL-GR Greece - OUT	5,731	369	2,551	1,658	10,309
			AL-RS (KS) Kosovo - OUT	334	458	1,026	890	2,708
			AL-ME Monte Negro - OUT	5,798	264	1,260	1,529	8,851
		Total OUT	11,863	1,091	4,837	4,077	21,868	
		Blerje AYEN Energy Trading				-16	-16	
		Shitje KENRGY	1,080				1,080	
		Shitje OST	1,437	1,175		494	3,106	
		Shitje GSA	4,800				4,800	
		Shitje AES	1,488	1,392	1,486	1,440	5,806	
		Shitje NOA	4,320				4,320	
Total transaksione	13,125	2,567	1,486	1,918	19,096			
8	Shkembime Cross-Border	AL-GR Greece - IN	0	0	0	0	0	
		AL-RS (KS) Kosovo - IN	0	0	0	0	0	
		AL-ME Monte Negro - IN	0	0	0	0	0	
		Total IN	0	0	0	0	0	
		AL-GR Greece - OUT	0	0	0	0	0	

8	Energy Supply - AL	Transaksionet e brendshme	AL-RS (KS) Kosovo - OUT						0
			AL-ME Monte Negro - OUT						0
			Total OUT	0	0	0	0	0	0
			Blerje KESH						0
			Shitje KESH						0
			Blerje AYEN						0
			Blerje DANSKE						0
Shitje AYEN						0			
Total transaksione	0	0	0	0	0	0			
9	NOA	Shkembime Cross-Border	AL-GR Greece - IN	-1,149	0	-222	-75	-1,446	
			AL-RS (KS) Kosovo - IN	0	0	-289	0	-289	
			AL-ME Monte Negro - IN	-12,394	-2,010	-5,190	-2,566	-22,160	
			Total IN	-13,543	-2,010	-5,701	-2,641	-23,895	
			AL-GR Greece - OUT	823	2,010	3,181	2,406	8,420	
			AL-RS (KS) Kosovo - OUT	0	0	0	0	0	
		AL-ME Monte Negro - OUT	0	0	0	75	75		
		Total OUT	823	2,010	3,181	2,481	8,495		
		Shitje FTL	17,040		2,520	160	19,720		
		Blerje DANSKE	-4,320				-4,320		
		Total transaksione	12,720	0	2,520	160	15,400		
10	KURUM INTERNATIONAL	Shkembime Cross-Border	AL-GR Greece - IN	0	0	0	0	0	
			AL-RS (KS) Kosovo - IN	0	0	0	0	0	
			AL-ME Monte Negro - IN	0	0	0	0	0	
			Total IN	0	0	0	0	0	
			AL-GR Greece - OUT	0	0	0	0	0	
			AL-RS (KS) Kosovo - OUT	0	0	0	0	0	
		AL-ME Monte Negro - OUT	0	0	0	0	0		
		Total OUT	0	0	0	0	0		
		Prodhim HEC-et	41,432	30,760	46,611	37,119	155,922		
		Total Prodhim	41,432	30,760	46,611	37,119	155,922		
		Shitje Konsumatoreve te Kualifikuar	13,882	28,673	24,671	17,191	84,417		
Shitje GSA	28,227			19,785	48,012				
Blerje GEN-I	-677	-8,610	-5,434		-14,721				
Shitje GEN-I		10,697	27,374	143	38,214				
Total transaksione	41,432	30,760	46,611	37,119	155,922				
11	ALPIQ	Shkembime Cross-Border	AL-GR Greece - IN	-130	0	0	0	-130	
			AL-RS (KS) Kosovo - IN	0	-312	0	0	-312	
			AL-ME Monte Negro - IN	-4,226	-11,551	-8,071	-6,391	-30,239	
			Total IN	-4,356	-11,863	-8,071	-6,391	-30,681	
			AL-GR Greece - OUT	3,458	11,863	8,071	6,306	29,698	
			AL-RS (KS) Kosovo - OUT	768	0	0	0	768	
		AL-ME Monte Negro - OUT	130	0	0	0	215		
		Total OUT	4,356	11,863	8,071	6,391	30,681		
		Shitje					0		
		Blerje					0		
		Total transaksione	0	0	0	0	0		
12	AXPO ALBANIA	Shkembime Cross-Border	AL-GR Greece - IN		0	0	0	0	
			AL-RS (KS) Kosovo - IN	0	0	-4,664	0	-4,664	
			AL-ME Monte Negro - IN		-2,274	0	-73	-2,347	
			Total IN	0	-2,274	-4,664	-73	-7,011	
			AL-GR Greece - OUT		2,274	4,664	73	7,011	
			AL-RS (KS) Kosovo - OUT		0	0	0	0	
		AL-ME Monte Negro - OUT		0	0	0	0		
		Total OUT	0	2,274	4,664	73	7,011		
		Shitje					0		
		Blerje					0		
		Total transaksione	0	0	0	0	0		
13	EFT (Energy Financing Team) TIRANA	Shkembime Cross-Border	AL-GR Greece - IN	-3,020	-30	-97	-178	-3,325	
			AL-RS (KS) Kosovo - IN	-27,927	-44,470	-44,577	-38,919	-155,893	
			AL-ME Monte Negro - IN	-396	-8,912	-3,144	-3,900	-16,352	
			Total IN	-31,343	-53,412	-47,818	-42,997	-175,570	
			AL-GR Greece - OUT	14,485	39,549	30,122	32,356	116,512	
			AL-RS (KS) Kosovo - OUT	3,773	817	588	985	6,163	
		AL-ME Monte Negro - OUT	443	391	1,152	662	2,448		
		Total OUT	18,701	40,757	31,862	34,003	125,223		
		Shitje FTL	8,808	2,211	14,250	8,994	34,263		
		Blerje AYEN Energy Trading	-9,750	-2,084	-11,004		-22,838		
		Shitje AES	13,584	12,528	12,710		38,822		
Total transaksione	12,642	12,655	15,956	8,994	50,247				
14	Grid Energy	Shkembime Cross-Border	AL-GR Greece - IN			0	0	0	
			AL-RS (KS) Kosovo - IN			0	0	0	
			AL-ME Monte Negro - IN			0	0	0	
			Total IN	0	0	0	0	0	
			AL-GR Greece - OUT			0	0	0	
			AL-RS (KS) Kosovo - OUT			0	0	0	
		AL-ME Monte Negro - OUT			0	0	0		
		Total OUT	0	0	0	0	0		
		Shitje FTL	5,040				12,480		
		Blerje AYEN Energy Trading	-5,040				-12,480		
		Total transaksione	0	0	0	0	0		
15	AES (Albanian Energy Supplier)	Shkembime Cross-Border	AL-GR Greece - IN			0	0	0	
			AL-RS (KS) Kosovo - IN			0	0	0	
			AL-ME Monte Negro - IN			0	0	0	
			Total IN	0	0	0	0	0	
			AL-GR Greece - OUT			0	0	0	
			AL-RS (KS) Kosovo - OUT			0	0	0	
		AL-ME Monte Negro - OUT			0	0	0		
		Total OUT	0	0	0	0	0		
		Shitje Konsumatoreve te Kualifikuar	15,072	13,920	14,022	14,120	57,134		
		Blerje Danske	-1,488	-1,392	-1,486	-1,440	-5,806		
		Shitje AYEN Energy Trading			174		174		
Blerje GSA				-12,680	-12,680				
Blerje EFT TIRANA	-13,584	-12,528	-12,710		-38,822				
Total transaksione	0	0	0	0	0				
16	GETA (GREEN ENERGY TRADING ALBANIA)	Shkembime Cross-Border	AL-GR Greece - IN	-52	0	-220	-51	-323	
			AL-RS (KS) Kosovo - IN	-16,916	-3,000	-9,055	0	-28,971	
			AL-ME Monte Negro - IN	-15,510	-16,484	-19,151	-11,707	-62,852	
			Total IN	-32,478	-19,484	-28,426	-11,758	-92,146	
			AL-GR Greece - OUT	30,843	19,484	28,206	11,707	90,240	
			AL-RS (KS) Kosovo - OUT	0	0	0	0	0	
		AL-ME Monte Negro - OUT	0	0	220	51	271		
		Total OUT	30,843	19,484	28,426	11,758	90,511		
		Blerje AYEN Energy Trading	-360				-360		
		Shitje GSA	1,920				1,920		
		Total transaksione	1,560	0	0	0	1,560		
17	ReNRGY	Shkembime Cross-Border	AL-GR Greece - IN	0	0	0	0	0	
			AL-RS (KS) Kosovo - IN	-6,227	-5,277	-5,681	-10,080	-27,265	
			AL-ME Monte Negro - IN	-7,440	-2,024	-4,270	-1,616	-15,350	
			Total IN	-13,667	-7,301	-9,951	-11,696	-42,615	
			AL-GR Greece - OUT	1,235	0	0	0	1,235	
			AL-RS (KS) Kosovo - OUT	0	11	0	0	11	
		AL-ME Monte Negro - OUT	0	0	0	0	0		
		Total OUT	1,235	11	0	0	1,246		
		Shitje OST		1,152		1,296	2,448		
		Total transaksione	0	0	0	0	0		

		Transaksionet e brendshme	Shitje FTL	13,512	6,138	9,951	10,400	40,001
			Blerje Danske	-1,080				-1,080
			Total transaksione	12,432	7,290	9,951	11,696	41,369
18	ENERGIA GAS AND POWER ALBANIA	Shkembime Cross-Border	AL-GR Greece - IN	0	0	0	0	0
			AL-RS (KS) Kosovo - IN	0	0	0	0	0
			AL-ME Monte Negro - IN	-7,811	-10,371	-7,781	-7,244	-33,207
			Total IN	-7,811	-10,371	-7,781	-7,244	-33,207
			AL-GR Greece - OUT	7,771	10,331	7,739	7,200	33,041
			AL-RS (KS) Kosovo - OUT	0	0	0	0	0
		Transaksionet e brendshme	Shitje Konsumatoreve te Kualifikuar	40	40	42	44	166
			Total transaksione	40	40	42	44	166
20	KASTRATI ENERGY	Shkembime Cross-Border	AL-GR Greece - IN					0
			AL-RS (KS) Kosovo - IN					0
			AL-ME Monte Negro - IN					0
			Total IN	0	0	0	0	0
			AL-GR Greece - OUT					0
			AL-RS (KS) Kosovo - OUT					0
		Transaksionet e brendshme	Shitje Konsumatoreve te Kualifikuar	1,491.3	1,504.7	1,753.4	3,072.7	7,822
			Blerje AYEN AS Energji	-1,491.3	-1,504.7	-1,753.4	-3,072.7	-7,822
			Total transaksione	0	0	0	0	0
21	ENSCO Trading	Shkembime Cross-Border	AL-GR Greece - IN	0	0	0	0	0
			AL-RS (KS) Kosovo - IN	0	-3,510	-2,900	0	-6,410
			AL-ME Monte Negro - IN	-10,664	-10,835	-3,192	-10,664	-35,355
			Total IN	-10,664	-14,345	-6,092	-10,664	-41,765
			AL-GR Greece - OUT	10,629	13,298	6,092	10,629	40,648
			AL-RS (KS) Kosovo - OUT	35	1,047	0	35	1,117
		Transaksionet e brendshme	-	-	-	-	0	
			Total transaksione	0	0	0	0	
22	ENER TRADE	Shkembime Cross-Border	AL-GR Greece - IN	0	0	0	0	0
			AL-RS (KS) Kosovo - IN	0	-1,680	0	0	-1,680
			AL-ME Monte Negro - IN	-1,080	-6,480	-1,500	-1,080	-10,140
			Total IN	-1,080	-8,160	-1,500	-1,080	-11,820
			AL-GR Greece - OUT	0	0	0	0	0
			AL-RS (KS) Kosovo - OUT	0	0	0	0	0
		Transaksionet e brendshme	Shitje FTL	1,080	8,160	8,147	1,080	18,467
			Shitje OST			1,500		1,500
			Blerje Ayen Energy Trading			-8,147		-8,147
			Total transaksione	1,080	8,160	1,500	1,080	11,820
23	KESH	Shkembime Cross-Border	AL-GR Greece - IN	0	0	0	0	0
			AL-RS (KS) Kosovo - IN	0	-796	-690	-4,870	-6,356
			AL-ME Monte Negro - IN	0	0	0	0	0
			Total IN	0	-796	-690	-4,870	-6,356
			AL-GR Greece - OUT	0	0	0	0	0
			AL-RS (KS) Kosovo - OUT	0	0	0	0	0
		Transaksionet e brendshme	Shitje OST	12,960				12,960
			Total transaksione	12,960	0	0	0	12,960

Burimi OST sha

Shenime:

1. Konsumatorët e kualifikuar për secilin subjekt ndryshojnë çdo muaj në varesë të kontratave të nënshkruara nga të dyja palët.
2. Shenja (-) është përdorur për energjinë që hyjnë në rrjet (blerje + import) ndërsa shenja (+) për energjinë që del nga rrjeti (shitje + eksport).
3. Çdo vlerë e sipërshtuar është e nominuar - me program (jo faktike me matje)