

BILANCI ELEKTROENERGJITIK 2019 (MWh)

	Neto KESH	Blerje ne Treg te hapur OSHEE	Neto (Selite)	HC.Priv/Kon ne Rrjetin e OSHEE	HC.Priv/Kon ne Rrjetin e OST	FOTOVO LTAIK	Neto Ashta	Neto Banja	Neto KURUM	H/C Peshqesh	H/C Fangu	Prodhim neto vendas
Prodhimi Neto KESH sha	2,979,252		33,368	612,995	625,142	22,196	191,495	153,357	330,742	91,100	166,396	5,206,043
<i>Ballanca e shkembimeve në Interkoneksion.</i>												
<i>Ballanca e shkembimeve të brendëshme (pa OST, OSHEE).</i>												
<i>Shitur OST per Humbje+konsum vetiak</i>	-100,811	2,171,583										
<i>Konsumuar nga Tec Vlora</i>												
<i>Devijime nga Programi i Interkoneksionit</i>												
<i>Energji per sherbime ndihmese+disbalanca</i>												
Energji per OSHEE sha nga KESH sha	2,878,441	2,171,583	33,368	612,995	625,142	22,196	191,495					
								153,357	330,742	91,100	166,396	
				6,535,220				41,209	<i>Energji për FMF (Treg Lib)</i>			
				6,576,429								
				6,576,429						Verifikim i saktësisë së vlerave	0	
												Ballanca në interkoneksion (marrje)
												2,406,036
<i>Energji ne rrjetin e OSHE / FMF (klient në treg të liberalizuar)</i>	<i>41,209</i>											
<i>Shitur Kons Familjare FSHU</i>	<i>2,750,180</i>											
<i>Shitur Kons Jo Familjare FSHU</i>	<i>2,263,981</i>	5,052,259										
<i>Shitur Kons Jo Familjare FMF</i>	<i>38,098</i>											
<i>Humbje tekn TL</i>	<i>117,739</i>			6,535,220								
<i>Humbje teknike ne zona</i>	<i>836,561</i>	1,482,961										
<i>Humbje Jo teknike ne zona</i>	<i>528,661</i>											
Konsumi i OSHEE (shitje+humbje)				6,535,220								
<i>Konsumuar nga Klientet ne TL ("kualifikuar")</i>				<i>867,029</i>								
<i>Konsumuar nga OST (humbje +nevoja vetiake)</i>				<i>168,621</i>								
<i>Energji e transmetuar ne rrjetin e OSHE për FMF jo klient</i>				<i>41,209</i>								
KONSUMI TOTAL 2019				7,612,079								7,612,079

Burimi OST ,OSHEE sha

TË DHËNA MBI TRANSMETIMIN E ENERJISË ELEKTRIKE NGA OPERATORI I SISTEMIT TE TRANSMETIMIT NË SHQIPËRI PËR VITIN 2019 (MWh)

	Janar	Shkurt	Mars	Prill	Maj	Qershor	Korrik	Gusht	Shtator	Tetor	Nentor	Dhjetor	Prog 2019		
HYRJE	Dhene nga H/C e KESH ne rrjetin e Transmetimit	245,184	292,925	148,489	96,030	162,139	225,050	348,055	392,059	200,724	201,765	232,748	434,085	2,979,252	7,943,379
	Dhene nga H/C e me perparesi ne rrjetin e Transmetimit	33,720	56,462	63,293	78,510	109,994	61,471	18,446	7,725	9,093	9,313	69,386	107,730	625,143	
	Energji nga Hec-et Lokale levruar ne Rrjetin e Transmetimit	12,349	19,369	22,802	34,170	46,544	19,063	2,589	593	1,452	965	24,274	45,210	229,379	
	Gjenerim KURUM (prodhues i pavarur)	29,161	28,719	25,553	20,233	44,789	40,096	20,514	14,352	12,957	15,663	29,014	49,691	330,741	
	HEC ASHTA (prodhues i pavarur Kontr.me OSHEE)	17,098	19,600	10,363	7,796	16,108	14,575	17,389	19,551	10,418	10,732	17,763	30,103	191,495	
	HEC BANJE (prodhues i pavarur)	14,664	22,583	11,562	21,552	32,836	14,261	6,364	6,031	2,949	4,619	3,164	12,772	153,357	
	HEC PESHQESH-T1/637 (prodhues i pavarur)	8,672	11,196	5,897	7,790	18,772	9,763	2,918	1,573	98	1,444	8,833	14,144	91,100	
	HEC FANGU (prodhues i pavarur)	18,578	26,325	6,304	2,770	32,427	16,987	16,859	17,860	4,623	214	4,082	19,368	166,397	
	Importi(Hyre) nga Linjat e Interkonjeksionit	392,156	171,716	336,968	296,451	171,206	215,017	221,074	238,332	312,506	292,774	282,173	246,143	3,176,515	
														Verifikim i saktësisë së bilancit	67
DALJE	Humbjet ne Transmetim	14,883	11,520	11,777	12,080	16,858	14,474	14,029	15,318	11,313	10,053	14,740	21,577	168,621	7,943,312
	Transmetuar ne Rrjetin e Shperndarjes	698,050	541,406	512,658	450,636	445,921	460,367	512,461	551,363	457,573	456,497	466,562	583,757	6,137,250	
	Klientene treg te hapur (TL)	37,932	46,989	91,997	95,784	88,488	89,715	85,145	82,221	72,836	53,159	56,425	66,270	866,961	
	Eksporti (Dale) nga Linjat e Interkonjeksionit	20,717	48,979	14,798	6,803	83,547	51,728	42,573	49,175	13,098	17,712	133,710	287,640	770,481	
Energjia Hyrese ne Transmetim	771,582	648,894	631,230	565,302	634,814	616,283	654,208	698,077	554,820	537,490	960,040	1,265,194	8,537,934		
Humbjet ne Transmetim	14,883	11,520	11,777	12,080	16,858	14,474	14,029	15,318	11,313	10,053	14,740	21,577	168,621		
Totali i Energjise se Transmetuar+Dalje Interkoneksion	756,699	637,374	619,453	553,222	617,956	601,809	640,179	682,758	543,507	527,437	656,697	937,666	7,774,758		
Eksporti (Dale) nga Linjat e Interkonjeksionit	20,717	48,979	14,798	6,803	83,547	51,728	42,573	49,175	13,098	17,712	133,710	287,640	770,481		
Energjia e Transmetuar Brenda rrjetit te OST														-	
Humbjet ne Transmetim	14,883	11,520	11,777	12,080	16,858	14,474	14,029	15,318	11,313	10,053	14,740	21,577	168,621		
Humbjet ne Transmetim ne %	1.93	1.78	1.87	2.14	2.66	2.35	2.14	2.19	2.04	1.87	2.20	2.25	2.12		

Burimi OST sha

Bilanci i Energjisë Elektrike për vitin 2019

OST sha	Njësia e Matjes	Janar	Shkurt	Mars	Prill	Maj	Qershor	Korrik	Gusht	Shtator	Tetor	Nëntor	Dhjetor	2019
	MWh													MWh
Prodhimi nga KESH GEN në Rrjetin e Transmetimit	1	245,184	292,925	148,489	96,030	162,139	225,050	348,055	392,059	200,724	201,765	232,748	434,085	2,979,252
Prodhimi nga HEC/HPP e vogla në Rrjetin e Transmetimit	2	12,349	19,369	22,802	34,170	46,544	19,063	2,589	593	1,452	965	24,274	45,210	229,380
Prodhimi nga PPE/IPP e mëdha në Rrjetin e Transmetimit	3	33,720	56,462	63,293	78,510	109,994	61,471	18,446	7,725	9,093	9,313	69,386	107,730	625,142
Prodhimi nga HEC Peshqesh	4	8,672	11,196	5,897	7,790	18,772	9,763	2,918	1,573	98	1,444	8,833	14,144	91,100
Prodhimi nga HEC Banja	5	14,664	22,583	11,562	21,552	32,836	14,261	6,364	6,031	2,949	4,619	3,164	12,772	153,357
Prodhimi nga HEC FANG		18,578	26,325	6,304	2,770	32,427	16,987	16,859	17,860	4,623	214	4,082	19,368	166,396
Prodhimi nga HEC Moglice												0	-	0
Prodhimi nga nga HEC Ashta	6	17,098	19,600	10,363	7,796	16,108	14,575	17,389	19,551	10,418	10,732	17,763	30,103	191,495
Prodhimi nga KURUM (Ulez-Shkopet&Bistrica1,2)	7	29,161	28,719	25,553	20,233	44,789	40,096	20,514	14,352	12,957	15,663	29,014	49,691	330,742
Eksporti (-) nga Linjat e Interkonjeksionit	D	20,717	48,979	14,798	6,803	83,547	51,728	42,573	49,175	13,098	17,712	133,710	287,640	770,480
Importi (+) nga Linjat e Interkonjeksionit	R	392,156	171,716	336,968	296,451	171,206	215,017	221,074	238,332	312,506	292,774	282,173	246,143	3,176,515
Balanca (Total Interkonjeksioni)	6=(R-D)	371,438	122,737	322,170	289,648	87,659	163,289	178,501	189,157	299,408	275,062	148,463	(41,497)	2,406,036
Energjia Totale në Marrje	7=(1+2+3+4+5+6+7+R)	771,582	648,894	631,230	565,302	634,814	616,283	654,208	698,077	554,820	537,490	671,436	959,244	7,943,380
Humbjet në Rrjetin e Transmetimit (përfshirë Nevojat Vetjake)	8	14,883	11,520	11,777	12,080	16,858	14,474	14,029	15,318	11,313	10,053	14,740	21,577	168,621
Humbjet në Rrjetin e Transmetimit %	9=8/7	1.93	1.78	1.87	2.14	2.66	2.35	2.14	2.19	2.04	1.87	2.20	2.25	2.12
Energjia Totale në Dhënie	10=(7-8)	756,699	637,374	619,453	553,222	617,956	601,809	640,179	682,758	543,507	527,437	656,697	937,666	7,774,759
<i>Transmetuar në Linjat e Interkonjeksionit</i>	11=D	20,717	48,979	14,798	6,803	83,547	51,728	42,573	49,175	13,098	17,712	133,710	287,640	770,480
<i>Transmetuar tek Klientët e Kualifikuar</i>		37,932	46,989	91,997	95,784	88,488	89,715	85,145	82,221	72,836	53,159	56,425	66,270	867,029
<i>EL Kurum</i>		1,140	1,212	32,607	33,380	29,800	33,200	34,174	30,358	27,986	16,572	21,592	30,810	292,830
<i>Fushe Arrëz</i>		36	39	671	248	519	113	433	846	1,279	1,313	1,344	1,350	8,192
<i>Titan</i>		2,611	8,580	9,665	9,280	6,241	9,134	6,808	9,384	9,094	6,213	8,073	9,337	94,420
<i>F.Kruje 220</i>		8,347	1,445	7,823	11,883	12,185	9,716	12,631	11,821	11,601	13,426	10,213	8,896	119,986
<i>N/ST 220/6,3 Colacem</i>		410	845	1,311	893	1,039	854	1,184	716	946	1,234	826	832	11,089
<i>ACR T1</i>		7,916	7,921	8,545	8,440	8,918	8,557	8,971	8,933	5,756	135	145	121	74,358
<i>ACR T2</i>		-	-	-	-	-	-	-	-	-	-	0	-	0
<i>AES T1</i>		3,861	5,751	7,010	6,885	6,775	7,206	5,119	3,685	3,282	6,781	5,649	3,708	65,710
<i>AES T2</i>		3,073	6,347	7,268	6,915	7,460	6,697	5,339	3,691	3,288	368	1,362	3,713	55,521
<i>N/ST 220kV Moglice</i>		887	729	541	426	410	346	400	357	313	333	425	373	5,540
<i>Hec Peshqesh</i>		26	7	24	16	0	13	33	35	41	35	16	4	251
<i>Hec Ashta</i>		0	0.14	0	0	0	0	0	-	0	0	-	0	2
<i>Hec BANJE</i>		20	10	17	11	11	12	24	30	28	23	21	19	228
<i>Hec FANG</i>		37	20	34	31	14	29	27	27	35	34	41	46	374
<i>Gjerim KURUM</i>		1		18	7	4	3	41	17	15	12	2	0	121
<i>Tec Ballsh T1</i>		2,953	4,485	5,134	4,869	2,186	4,738	3,186	5,818	2,490	68	70	77	36,075
<i>Ferro Krom</i>		6,616	9,596	11,331	12,501	12,925	9,096	6,777	6,503	6,682	6,678	6,644	6,982	102,330
<i>Transmetuar në rrjetin e Shpërndarjes (OSHEE)</i>		698,050	541,406	512,658	450,636	445,921	460,367	512,461	551,363	457,573	456,497	466,562	583,757	6,137,250
<i>Transmetuar në rrjetin e Shpërndarjes (OSHEE) 110 kV</i>		577,488	447,536	428,705	380,646	375,842	391,700	439,588	476,546	388,317	395,451	393,244	490,020	5,185,082
<i>Transmetuar në rrjetin e Shpërndarjes (OSHEE) 35 kV</i>		63,083	49,957	47,877	41,475	41,526	40,720	43,582	44,223	38,432	30,182	40,987	50,448	532,492
<i>Transmetuar në rrjetin e Shpërndarjes (OSHEE) 6, 10, 20 kV</i>		57,479	43,914	36,076	28,515	28,554	27,946	29,292	30,594	30,823	30,864	32,330	43,289	419,676

PARAQITJA SKEMATIKE E FLUKSEVE TE ENERGJISE NE SISTEMIN ELEKTRO-ENERGJITIK SHQIPETAR 12 Mujori 2019 (MWh)

Energji e lëvruar nga H/C-et e KESH sha	Energji e levruar nga prodhuesit me përparësi lidhur ne TL (kontrate me OSHEE)	Energji e levruar nga H/C ASHTA lidhur ne TL (kontrate me OSHEE)	Energji e levruar nga H/C et Priv/konc lidhur ne TL (Prodhues ne treg te hapur)			Energji ne hyrje nga Interkoneksioni
2,979,252	625,142	191,495	Kurum	Banje	Fangu	Peshqesh
			330,742	153,357	166,396	91,100

7,943,379

ENERGJI HYRESE NE RRJETIN E TRANSMETIMIT

229,380	HC.Priv/Kon + CENTR Fotovoltaikë ne Rrjetin e OSHEE		Humbje + Konsum ne Transmetim	Konsumi i klienteve në treg të hapur te lidhur ne Transmetim	Energji ne dalje nga Interkoneksioni
Neto (Selit)	33,368	635,191	168,621	867,029	770,480
668,559					

439,179

Energji e transmetuar ne rrjetin e Shperndarjes	6,137,249
---	-----------

5,907,869

6,576,428

ENERGJI HYRESE NE RRJETIN E SHPERNDARJES

Lëvruar ne rrjetin e OSHE për FMF jo klient (tarifë aksesi)	41,209
---	--------

1

Energji e përdorur për klientët e OSHEE	6,535,219
---	-----------

Shitur Kons Familjare FSHU	2,750,180	
Shitur Kons Jo Familjare FSHU	2,263,981	5,052,259
Shitur Kons Jo Familjare FMF	38,098	
Humbje tekn TL	117,739	
Humbje teknike ne zona	836,561	1,482,961
Humbje Jo teknike ne zona	528,661	

6,535,220	6,535,220	6,535,220
	0	

LEGJENDA	
FSHU	FURNIZUES I SHERBIMIT UNIVERSAL
FMF	FURNIZUES I MUNDEISE SE FUNDIT

Burimi OST ,OSHEE sha

PRODHIMI NETO NE SHQIPERI	Janar	Shkurt	Mars	Prill	Maj	Qershor	Korrik	Gusht	Shtator	Tetor	Nentor	Dhjetor	2019
Prodhimi Neto KESH Gen.	245,184	292,925	148,489	96,030	162,139	225,050	348,055	392,059	200,724	201,765	232,748	434,085	2,979,252
Hec-et Private dhe Konc. (Rrjeti Shperndarjes)	46,259	61,344	64,760	79,237	96,449	53,764	18,320	9,940	11,062	12,607	61,785	97,470	612,997
Hec-et Private dhe Konc. (Rrjeti Transmetimit)	33,720	56,462	63,293	78,510	109,994	61,471	18,446	7,724	9,093	9,313	69,386	107,729	625,142
HEC Ashta	17,098	19,600	10,363	7,796	16,108	14,575	17,389	19,551	10,418	10,732	17,763	30,103	191,495
Prodhimi Neto Hec Lanabregas	2,542	2,525	2,836	3,020	3,326	3,217	3,044	2,474	2,279	2,537	2,759	2,809	33,368
Prodhimi Neto (Hec Ulez,Shkopet,Bistrica 1,2)	29,161	28,719	25,553	20,233	44,789	40,096	20,514	14,352	12,957	15,663	29,014	49,691	330,741
Prodhimi Hec Peshqesh	8,672	11,196	5,897	7,790	18,772	9,763	2,918	1,573	98	1,444	8,833	14,144	91,100
Prodhimi Hec Fangu	18,578	26,325	6,304	2,770	32,427	16,987	16,859	17,860	4,623	214	4,082	19,368	166,397
Prodhimi Hec Banja	14,664	22,583	11,562	21,552	32,836	14,261	6,364	6,031	2,949	4,619	3,164	12,772	153,357
Prodhimi i Centraleve Fotovoltaike	1,311	1,086	1,880	1,762	1,909	2,446	2,606	2,603	2,222	2,157	1,089	1,126	22,197
ENERGJIA NETO E PRODHUAR NE SHQIPERI	417,189	522,764	340,936	318,701	518,748	441,630	454,515	474,168	256,425	261,051	430,622	769,297	5,206,045

ENERGJI NGA INTERKONEKSIONI													
Energji ne dhenie nga Interkoneksioni	20,717	48,979	14,798	6,803	83,547	51,728	42,573	49,175	13,098	17,712	133,710	287,640	770,480
Energji ne marrje nga Interkoneksioni	392,156	171,716	336,968	296,451	171,206	215,017	221,074	238,332	312,506	292,774	282,173	246,143	3,176,516
Ballanca Hyrje/Dalje nga Interkoneksioni	371,438	122,737	322,170	289,648	87,659	163,289	178,501	189,157	299,408	275,062	148,463	(41,497)	2,406,035

KONSUMI I ENERGJISE NE SHQIPERI													
Konsumuar nga OSHEE (SHITJE+HUMBJE)	733,361	584,916	556,298	497,498	497,694	496,866	529,375	561,300	467,826	469,094	504,461	636,532	6,535,222
Konsumuar nga OST (humbje+konsum vetiak)	14,883	11,520	11,777	12,080	16,858	14,474	14,029	15,318	11,313	10,053	14,740	21,577	168,621
Konsumuar nga Klientet e "Kualifikuar"	37,932	46,989	91,997	95,784	88,488	89,715	85,145	82,221	72,836	53,159	56,425	66,270	867,029
Energji per klientet _35kV (te dal ne treg te parregulluar)	2,452	2,076	3,033	2,987	3,367	3,863	4,467	4,487	3,858	3,739	3,458	3,421	41,209
KONSUMUAR NE SHQIPERI	788,628	645,501	663,105	608,348	606,407	604,918	633,016	663,326	555,833	536,045	579,084	727,800	7,612,080

Burimi OST ,OSHEE sha

TABELA ME TE DHENA PERIODIKE (MUJORE) TE OSHEE Sh.a 2019		Janar	Shkurt	Mars	Prill	Maj	Qershor	Korrik	Gusht	Shtator	Tetor	Nentor	Dhjetor	Progressive	
A	Energji Totale e Hyrë në OSHEE Sh.a (MWh)	A=A.1+A.2	735,813	586,992	559,331	500,485	501,061	500,729	533,842	565,788	471,684	472,833	507,920	639,953	6,576,432
A.1	Energji e transmetuar nepermjet OST per llogari te OSHEE Sh.a	B=Sum(A.1.1,A.1.2)	685,701	522,038	489,856	416,466	399,377	441,303	509,872	550,770	456,121	455,532	442,288	538,547	5,907,870
A.1.1	Nga KESH -Gen nepermjet OST		243,771	270,859	153,750	90,693	142,604	220,724	343,089	377,647	201,873	221,024	215,113	397,294	2,878,441
A.1.2	Nga OST si import i OSHEE Sh.a		388,660	173,040	259,417	236,480	127,304	140,670	126,480	141,360	230,880	210,724			2,171,583
A.1.3	Energji e transmetuar per klientet _35kV (te dal ne treg te parregulluar)		2,452	2,076	3,033	2,987	3,367	3,863	4,467	4,487	3,858	3,739	3,458	3,421	41,209
A.1.4	Nga OST per llogari te klienteve te OSHEE Sh.a prodhuarnga HEC-et ne rr		50,818	76,062	73,655	86,306	126,102	76,046	35,835	27,275	19,511	20,045	87,149	137,833	816,637
A.1.5	Nga TEC VLORA nepermjet OST		n/a	n/a	n/a	n/a	n/a	n/a	n/a	n/a	n/a	n/a	n/a	n/a	n/a
A.1.6	Nga Bistrica 1,2 nepermjet OST		n/a	n/a	n/a	n/a	n/a	n/a	n/a	n/a	n/a	n/a	n/a	n/a	n/a
A.2	Energji elektrike e injektuar ne OST nga Hec-et Lokale	A.2	12,349	19,369	22,802	34,170	46,544	19,063	2,589	593	1,452	965	24,274	45,210	229,380
A.3	Energji e transmetuar direkt ne rrjetin e OSHEE Sh.a	=Sum(A.3.1, A.3.2)	50,112	64,955	69,476	84,019	101,684	59,426	23,970	15,018	15,563	17,302	65,632	101,406	668,561
A.3.1	HEC Ulez, Lanabregas		2,542	2,525	2,836	3,020	3,326	3,217	3,044	2,474	2,279	2,537	2,759	2,809	33,368
A.3.2	Impjantet Private/me Koncesion		46,259	61,344	64,760	79,237	96,449	53,764	18,320	9,940	11,062	12,607	61,785	97,470	612,997
A.3.3	Burimet e Rinovueshme Fotovoltaike (BRE)		1,311	1,086	1,880	1,762	1,909	2,445	2,606	2,603	2,222	2,157	1,089	1,126	22,196
B	*Energji Totale e shpërndarë ne Rrjetin e Shperndarjes	B=A+A.3	748,162	606,361	582,133	534,655	547,605	519,792	536,432	566,381	473,136	473,799	532,194	685,163	6,805,811
C	Humbjet Totale ne Rrjetin e Shperndarjes (MWh)	C=A-C.1+C.2+C.3	214,516	135,762	141,847	106,261	109,977	98,977	108,096	111,200	82,046	95,717	108,883	169,679	1,482,962
C.1	Humbje Teknikke njesite e TL (MWh)		12,758	10,232	9,638	9,852	10,929	9,010	9,516	10,036	7,278	8,687	9,461	10,343	117,739
C.2	Humbje Teknikke ne Zona (MWh)		130,054	78,533	82,659	58,954	60,398	54,350	59,372	60,501	44,785	52,673	59,484	94,796	836,561
C.3	Humbje JoTeknike ne Zona (MWh)		71,705	46,997	49,550	37,455	38,651	35,617	39,209	40,662	29,982	34,357	39,938	64,540	528,661
C.1	Humbjet Totale ne OSHEE Sh.a (%)	C.1=C/B	28.67%	22.39%	24.37%	19.87%	20.08%	19.04%	20.15%	19.63%	17.34%	20.20%	20.46%	24.76%	21.79%
C.1.1	Humbje Teknikke njesite e TL (%)		1.71%	1.69%	1.66%	1.84%	2.00%	1.73%	1.77%	1.77%	1.54%	1.83%	1.78%	1.51%	1.73%
C.2.1	Humbje Teknikke ne Zona (%)		17.70%	13.18%	14.45%	11.24%	11.26%	10.65%	11.27%	10.88%	9.62%	11.33%	11.39%	14.06%	12.52%
C.3.1	Humbje JoTeknike ne Zona (%)		9.58%	7.75%	8.51%	7.01%	7.06%	6.85%	7.31%	7.18%	6.34%	7.25%	7.50%	9.42%	7.77%
D	Energjia e përdorur në Rrjetin e Shpërndarjes	D=Sum(D.1-D.7)	533,645	470,600	440,286	428,394	437,628	420,815	428,335	455,181	391,090	378,081	423,310	515,484	5,322,848
D.1	Shitur Klienteve FMF (MWh)	D.1=D.1.1+D.1.2	2,799	2,398	2,439	3,002	2,336	2,748	3,728	3,641	3,958	3,430	3,872	3,748	38,098
D.1.1	Shitur Klienteve FMF Privat (MWh)		2,418	2,115	2,299	2,917	2,123	2,181	2,338	2,344	2,645	2,023	2,331	2,214	27,946
D.1.2	Shitur Klienteve FMF JoBuxhetore(MWh)		381	283	140	85	213	568	1,390	1,297	1,313	1,407	1,541	1,534	10,152
D.2	Shitur Klienteve Private (MWh)	D.2=D.2.1+D.2.2+D.2.3	136,167	127,067	122,875	124,725	128,423	142,989	158,993	168,424	139,746	129,656	125,181	143,922	1,648,168
D.2.1	Shitur nga rrjeti i Transmetimit per llogari te OSHEE Sh.a														
D.2.2	Shitur per nevoja te veta te OSHEE Sh.a		1,138	968	855	704	654	612	673	637	556	561	887	1,169	9,415
D.2.3	Shitur Klienteve Private (pa ate per nevoja te veta ne treg te parregulluar)		135,029	126,099	122,020	124,021	127,769	142,377	158,320	167,787	139,190	129,095	124,294	142,754	1,638,753
D.3	Shitur Klienteve JoBuxhetore (MWh)		28,400	26,794	29,802	29,084	29,248	30,019	30,764	31,804	26,831	29,884	30,237	29,474	352,342
D.4	Shitur Klienteve Buxhetore (MWh)		27,253	26,362	23,650	20,871	20,907	19,365	20,135	18,885	17,519	18,059	21,920	28,544	263,471
D.5	Shitur Klienteve Familjare (MWh)	D.5=D.5.1+D.5.2	324,226	266,533	235,685	213,554	206,803	202,768	207,657	227,347	197,726	192,348	214,368	261,165	2,750,180
D.5.1	Shitur Klienteve Familjare (MWh)		317,725	260,156	229,386	207,294	200,518	196,349	200,813	220,377	191,203	185,823	208,295	255,201	2,673,140
D.5.2	Shitur Klienteve Familjare per Ambjentet e Perbashketa		6,501	6,376	6,299	6,261	6,286	6,418	6,844	6,969	6,524	6,525	6,074	5,964	77,040
D.6	Energji elektrike e injektuar ne OST nga Hec-et Lokale	D.6=A.2	12,349	19,369	22,802	34,170	46,544	19,063	2,589	593	1,452	965	24,274	45,210	229,380
D.7	Energji elektrike e perdorur nga klientet ne treg te parregulluar	D.7=A.1.3	2,452	2,076	3,033	2,987	3,367	3,863	4,467	4,487	3,858	3,739	3,458	3,421	41,209
E	Faturuar muaji Parardhës (000/leke)	E=Sum(D.1-D.7)+E.1+E.2+E.3+E.4	6,625,289	6,710,114	5,819,929	5,496,920	5,155,722	5,075,626	5,324,553	5,684,531	6,100,924	5,207,417	4,992,973	5,292,443	67,486,440
F	Arketimet e muajit aktual (000 leke)	F.1=F.1.1+F.1.2+F.1.3+F.1.4	6,012,063	6,214,348	5,809,420	5,627,003	5,282,041	4,771,267	5,561,263	5,644,126	5,728,875	5,453,169	4,476,170	5,856,208	66,435,953
F.1	Arketuar per faturat korrente te vitit aktual		4,199,029	4,183,587	3,585,870	3,368,247	3,328,198	3,106,838	3,445,103	3,780,699	3,984,742	3,373,611	2,810,098	3,567,340	42,733,362
F.3	Arketuar per faturat e tjera te vitit aktual		30	188,149	1,480,506	1,814,839	1,581,085	1,358,145	1,616,493	1,523,253	1,461,883	1,678,203	1,437,765	1,950,778	16,091,131
F.4	Arketuar per faturat e tjera te viteve te kaluara		1,813,004	1,842,611	743,045	443,917	372,758	306,283	499,667	340,173	282,250	401,354	228,307	338,090	7,611,461
F.1	Arketimet e muajit aktual (%)	F.1=F/E	90.7%	92.6%	99.8%	102.4%	102.5%	94.0%	104.4%	99.3%	93.9%	104.7%	89.6%	110.7%	98.4%
F.1.1	Arketuar per faturat korrente te vitit aktual (%)	F.1.1=F.1.1/E	63.4%	62.3%	61.6%	61.3%	61.2%	61.2%	64.7%	66.5%	65.3%	64.8%	56.3%	67.4%	63.3%
F.1.3	Arketuar per faturat e tjera te vitit aktual (%)	F.1.3=F.1.3/E	0.0%	2.80%	25.4%	33.0%	30.7%	26.8%	30.4%	26.8%	24.0%	32.2%	28.8%	36.9%	23.8%
F.1.4	Arketuar per faturat e tjera te viteve te kaluara (%)	F.1.4=F.1.4/E	27.4%	27.5%	12.8%	8.1%	7.2%	6.0%	9.4%	6.0%	4.6%	7.7%	4.6%	6.4%	11.3%
G	Faturuar muaji Raportues (000/leke)		6,710,114	5,819,929	5,496,920	5,155,722	5,075,626	5,324,553	5,684,531	6,100,924	5,207,417	4,992,973	5,292,443	6,251,767	67,112,919
1	Nr. Konsumatoreve gjithsej (Nr.)		1,239,101	1,242,503	1,234,670	1,245,202	1,236,964	1,238,667	1,240,031	1,241,079	1,244,468	1,246,665	1,248,482	1,249,882	14,907,714
2	Fatura te emetuara me lexim konsumi (Nr.)		957,714	953,940	960,236	968,762	971,709	979,349	995,842	1,024,406	997,647	1,004,843	985,132	980,030	11,779,610
3	Sasia e energjise se faturuar me lexim konsumi (MWh)		518,358	448,752	414,086	390,930	387,412	397,621	421,001	449,822	385,531	373,113	395,245	466,417	5,048,287
4	Fatura te emetuara me lexim "0" (Nr.)		284,296	294,796	282,618	295,999	275,998	268,192	256,799	226,217	257,215	252,348	274,405	283,950	3,252,833
5	Nr.Faturave te emetuara pa lexim (energji e pa matur) (Nr.)		-	-	-	-	-	-	-	-	-	-	-	-	-
6	Sasia e energjise se faturuar si energji e pamatur (MWh)		-	-	-	-	-	-	-	-	-	-	-	-	-
7	Nr.Faturave te emetuara pa lexim (dem ekonomik) (Nr.)		-	-	-	-	-	-	-	-	-	-	-	-	-
8	Shuma e faturuar si dem ekonomik (000/leke)		-	-	-	-	-	-	-	-	-	-	-	-	-
9	Nr.Faturave per te cilat eshte arketuar kamat vonese (Nr.)		395,146	371,921	419,418	432,952	446,223	385,780	488,274	499,940	417,865	424,008	368,989	448,334	5,098,850
10	Vlera e Kamat vonesave te arketuara (000/leke)		86,550	74,301	76,764	84,351	85,896	75,158	108,126	100,374	85,786	129,340	75,296	104,638	1,086,579

*Në Energji Totale e shpërndarë ne Rrjetin e Shperndarjes (MWh) , eshte llogaritur edhe sasia OUT nga DSO-OST (229,380 MWh)

PRODIMI GJATE VITIT 2019 NGA CENTRALET E LIDHURA NE RRJETIN E TRANSMETIMIT (MWh)

HECET DHE KAPACITETI	MW	SUBJEKTI	LIDHJA	JANAR	SHKURT	MARS	PRILL	MAJ	QERSHOR	KORRIK	GUSHT	SHTATOR	TETOR	NETOR	DHJETOR	2019
P.PuH HEC "Fierze"	500,000		220 kV													
P.PuH HEC "Koman"	600,000	"KESH" sha	220 kV	245,184	292,925	148,489	96,030	162,139	225,050	348,055	392,059	200,724	#####	232,748	434,085	2,979,252
P.PuH HEC "V. Dejes"	250,000		220 kV													
P.PuH Tec Vlora	98,000	"KESH" sha	220 kV													
P.Pav HEC "Ulez"	25,200		110 kV													
P.Pav HEC "Shkopet"	24,000	"Kurum International" sh.a.	110 kV	29,161	28,719	25,553	20,233	44,789	40,096	20,514	14,352	12,957	15,663	29,014	49,691	330,742
P.Pav HEC "Bistrica 1"	22,500		110 kV													
P.Pav HEC "Bistrica 2"	5,000		110 kV													
P.Pav HEC "Peshqesh"	27,940	"Ayen As Energji" sha	220 kV	8,672	11,196	5,897	7,790	18,772	9,763	2,918	1,573	98	1,444	8,833	14,144	91,100
P.Pav HEC "Fangau"	74,600		220 kV	18,578	26,325	6,304	2,770	32,427	16,987	16,859	17,860	4,623	214	4,082	19,368	166,396
P.Pav HEC "Banje"	73,000	"Devoll Hydropower" sha	110 kV	14,664	22,583	11,562	21,552	32,836	14,261	6,364	6,031	2,949	4,619	3,164	12,772	153,357
PPE HEC "Ashta"	48,200	"Energji Ashta" shpk	110 kV	17,098	19,600	10,363	7,796	16,108	14,575	17,389	19,551	10,418	10,732	17,763	30,103	191,495
PPE HEC "Bishnica 2"	2,500	"HEC Bishnica 1.2" shpk	110 kV	530	745	986	1,281	1,319	621	345	199	266	323	924	1,506	9,045
PPE HEC "Dardhe"	5,800	"Wenerg" shpk	110 kV													
PPE HEC "Truen"	2,500	"TRUEN" shpk	110 kV	454	1,071	1,781	2,350	2,819	888	(2)	(13)	13	106	1,173	2,116	12,756
PPE HEC "Ternove"	0,921	"TEODORI 2003" shpk	110 kV	82	115	347	843	502	515	593	492	293	96	699	715	5,293
PPE HEC "Gjorice"	29,610	"DITEKO" shpk	110 kV	5,440	9,974	10,099	9,725	13,428	9,435	4,725	3,609	3,455	2,631	9,841	16,672	99,035
PPE HEC "Slabinje"	10,400	"Power Elektrik Slabinje" shpk	110 kV	1,903	3,713	4,812	5,833	7,291	3,194	1,400	667	800	709	3,808	6,265	40,396
PPE HEC Slabinje	3,400	"Power Elektrik Slabinje" shpk	110 kV	-	-	-	-	-	-	-	-	-	-	0	5	5
PPE HEC "Bele 1"	5,000	"Euron Energy" shpk														
PPE HEC "Topojan 2"	5,800															
PPE HEC "Bele 2"	11,000	"Alb-Energy" shpk	110 kV	5,821	10,509	14,316	18,392	20,111	14,868	5,258	957	870	908	5,895	11,883	109,787
PPE HEC "Topojan 1"	2,900															
PPE HEC "Orgjosi I Ri"	4,800	"Energal" shpk														
PPE HEC "Gernjie-1"	2,300															
PPE HEC "Gernjie-2"	2,800	"Energy partners Al" shpk		274	756	1,096	2,799	4,084	1,716	16	(11)	6	(12)			15,649
PPE HEC "Rrups"	3,600															
PPE HEC "Rapuni 1.2"	8,100	"C & S Construction Energj" shpk	110 kV	1,853	2,376	2,429	3,825	4,387	3,473	742	(8)	479	578	3,351	4,922	28,406
PPE HEC "Rapuni 3.4"	8,850	"C & S Energj" shpk	110 kV	2,377	2,819	2,031	2,276	4,229	2,691	876	350	660	656	3,217	4,717	26,899
PPE HEC "Llapi"	13,620	"Gjo.Spa POWER" shpk	110 kV	1,406	2,181	5,036	8,305	9,610	5,896	1,657	606	524	598	2,989	6,304	45,110
PPE HEC "Lengarice"	8,940	"Lengarica & Energj" shpk	110 kV	3,990	4,541	2,497	2,266	2,727	1,229	264	(29)	173	92	3,425	5,420	26,597
PPE HEC "Lura 1"	6,540		110 kV													
PPE HEC "Lura 2"	4,020	"Erdat Lura" shpk	110 kV	1,545	3,503	3,691	3,465	7,489	2,775	270	80	230	394	4,483	6,341	34,265
PPE HEC "Lura 3"	5,660		110 kV													
PPE HEC "Malla"	5,455	"Giure Rec" shpk	110 kV	587	1,281	1,196	1,038	2,464	1,000	239	43	35	173	1,487	2,078	11,621
PPE HEC Prella	14,970	"Prella Energji"	110 kV	1,397	3,088	2,744	3,320	8,282	2,496	35	11	10	117	4,659	5,436	31,597
PPE HEC Cemerica 1	0,88		110 kV													
PPE HEC Cemerica 2	1,08	"REJ ENERGY" shpk	110 kV	930	1,480	2,481	2,418	1,762	620	189	(13)	(13)	(14)	1,796	2,902	14,540
PPE HEC Cemerica 3	2,1		110 kV													
PPE HEC TUÇ	4,47	MC Inerte Lumzi	110 kV	2,197	3,412	1,184	1,996	5,719	2,436	440	350	240	504	2,678	4,594	25,751
PPE HEC Lumzi	11		110 kV													
PPE HEC Denas	14,5	"Denas Power" shpk	110 kV	1,873	3,271	3,942	3,794	3,180	1,161	495	246	226	177	4,719	7,176	30,258
PPE Llenga 1	1,73		110 kV													
PPE Llenga 2	0,3	"HEC LLENGË" sh.p.k	110 kV	147	275	926	1,720	1,582	657	224	21	88	72	1,045	1,466	8,224
PPE Llenga 3	1,5		110 kV													
PPE HEC Shpella Poshte 2	2,3	Liria Energji shpk	110 kV	377	574	1,136	1,675	1,609	677	276	133	154	129	743	1,400	8,884
PPE HEC Germani 1	4,8		110 kV													
PPE HEC Germani 2	1,5	SA'GA-MAT shpk	110 kV	537	777	561	904	1,688	412	62	13	122	172	1,540	1,313	8,101
PPE HEC Lashkiza 1	4,076		110 kV													
PPE HEC Lashkiza 2	0,882	HEC Lashkiza shpk	110 kV	-	-	-	151	505	232	37	(6)	8	23	292	900	2,141
PPE HEC Seta 1+2	7,454		110 kV													
PPE HEC Seta 3	2,722	"Hydro Seta" sh.p.k	110 kV													14,667
PPE HEC Seta 4	4,724		110 kV				132	2,394	2,228	79	(16)	48	122	3,808	5,873	
PPE HEC Darsi 1	2,24		110 kV													
PPE HEC Darsi 2	7,663	"Henz Energj" shpk	110 kV	0	0	0	0	2,815	2,251	227	43	406	759	4,643	4,974	16,116
PPE HEC Darsi 3	1,066		110 kV													
	1,995															4,537,484

PRODHIMI GJATE VITIT 2019 NGA CENTRALET E LIDHURA NE RRJETIN E SHPERNDARJES (MWh)																	
HECET DHE KAPACITETI	MW	SUBJEKTI	LIDHJA	JANAR	SHKURT	MARS	PRILL	MAJ	QERSHOR	KORRIK	GUSHT	SHTATOR	TETOR	NETOR	DHJETOR	2019	
PPF	HEC "Lanabregas"	5.000	"Hec Lanabregas" sha	35	2,542	2,525	2,836	3,020	3,326	3,217	3,044	2,474	2,279	2,537	2,759	2,809	33,368
PPF	HEC "Lenie"	0.400	"EMIKEL 2003" sh.p.k	10kV	206	237	277	270	271	265	209	96	136	135	235	268	2,605
PPF	HEC "Corovode"	0.200		10kV	67	90	98	106	112	71	8	-	-	-	-	71	107
PPF	HEC "Smokthine"	9.200	"Albania Green Energy" sh.p.k	35 kV	3,182	3,570	3,033	2,800	2,658	2,075	1,534	1,074	1,037	1,400	2,853	3,677	28,892
PPF	HEC "Bulqize"	0.600		10kV	78	83	125	140	175	134	83	68	55	53	104	152	152
PPF	HEC "Homes"	0.395	"Balkan Green Energy" shpk	10kV	31	35	26	23	21	10	-	-	-	-	-	11	156
PPF	HEC "Zerqan"	0.625		6kV	72	58	59	60	61	56	45	34	48	57	59	58	667
PPF	HEC "Arras"	4.800	"Balkan Green Energy" shpk	20kV	872	1,346	1,805	1,932	2,706	1,637	295	-	205	443	1,888	2,481	15,610
PPF	HEC "Orgjost"	1.200		10kV	192	445	699	723	742	727	229	-	-	23	174	384	4,337
PPF	HEC "Lekbibaj"	1.400	"Balkan Green Energy" shpk	10kV	435	539	643	665	750	672	448	286	69	166	577	657	5,907
PPF	HEC "Dukagjin"	0.640		10kV	138	115	131	140	95	-	28	205	134	138	79	107	1,310
PPF	HEC "Marjan"	0.200	"Balkan Green Energy" shpk	10kV	0	0	0	0	0	0	0	0	0	0	0	0	0
PPF	HEC "Lozhan"	0.100		10kV	0	0	0	0	0	0	0	0	0	0	0	0	0
PPF	HEC "Barmash"	0.830	"Balkan Green Energy" shpk	10kV	166	236	128	117	122	83	7	-	-	-	57	209	1,125
PPF	HEC "Treske 2"	0.250		10kV	51	-	-	69	111	74	27	-	-	-	0	90	423
PPF	HEC "Nikolice"	0.700	"Balkan Green Energy" shpk	10kV	62	48	153	116	249	188	120	45	-	-	81	189	1,250
PPF	HEC "Funares"	1.920		10kV	362	327	445	529	599	632	110	13	95	280	447	655	4,492
PPF	HEC "Lunik"	0.200	"Balkan Green Energy" shpk	10kV	56	92	77	63	77	82	-	-	-	20	37	125	629
PPF	HEC "Kerpice"	0.420		6kV	72	67	69	80	99	87	16	-	-	20	13	63	101
PPF	HEC "Ujanik"	0.630	"Balkan Green Energy" shpk	10kV	85	82	139	218	236	123	45	8	19	19	51	179	1,204
PPF	HEC "Borsh"	0.250		6kV	65	119	106	68	58	43	34	23	18	-	27	112	673
PPF	HEC "Leshnice"	0.380	"Balkan Green Energy" shpk	10/6kV	45	98	71	46	52	28	14	-	-	-	44	84	483
PPF	HEC "Velec"	1.200		10kV	226	355	560	615	572	275	113	34	-	-	324	538	3,612
PPF	HEC "Muhur"	0.250	"Balkan Green Energy" shpk	6kV	96	77	79	73	77	38	-	-	4	49	63	97	653
PPF	HEC "Rajan"	1.020		10kV	273	495	328	269	273	140	26	-	-	-	125	450	2,381
PPF	HEC "Lure"	0.750	10kV	-	-	-	-	15	7	-	-	-	79	186	-	9	296
PPF	HEC "Gjanc"	2.960	"Spahiu Gjanc" sh.p.k.	35 kV	272	-	53	-	165	683	1,458	1,596	830	-	276	1,725	7,058
PPF	HEC "Bogove"	2.500	"Wonder power" sha	35 kV	526	753	497	1,062	1,452	749	88	-	-	-	404	1,441	6,973
PPF	HEC "Xhvire"	0.570	"Amal" sh.p.k	10kV	67	66	85	121	183	145	105	57	48	40	64	152	1,134
PPF	HEC "Stranik"	4.600	"Hidroinvest 1" shpk	35kV	682	1,213	1,272	1,272	1,728	904	266	7	48	3	622	1,707	9,725
PPF	HEC "Zall Tore"	3.000		35kV	621	1,142	957	931	1,476	836	417	142	191	137	606	1,429	8,885
PPF	HEC "Klos"	1.950	"Malido-Energji" shpk	6kV	133	202	181	222	450	385	54	-	-	44	138	432	2,242
PPF	HEC "Borje"	1.500	"HIDROALBANIA Energji" shpk	35kV	814	1,258	2,059	3,329	3,556	2,351	998	508	424	258	881	1,432	17,870
PPF	HEC "Cemaleve"	2.950	"HIDROALBANIA Energji" shpk	35kV	231	469	740	1,285	1,303	838	299	166	142	111	259	474	6,316
PPF	HEC "Cemaleve 1"	3.270	"HIDROALBANIA Energji" shpk	35kV	262	554	855	1,498	1,570	1,004	395	198	160	133	308	561	7,499
PPF	HEC "Murdar 1"	2.680	"HydroEnergy" shpk	10kV	1,137	1,107	235	868	1,759	1,166	85	19	7	65	1,598	2,040	10,086
PPF	HEC "Murdar 2"	1.000		10kV	679	648	114	498	968	660	32	8	-	17	897	1,014	5,535
PPF	HEC "Dishnice"	0.200	"Dishnica Energy" shpk	10kV	36	85	93	69	86	42	21	10	-	15	21	62	540
PPF	HEC "Lubonje"	0.300	"Elektro Lubonje" shpk	10kV	9	52	94	35	23	-	-	-	-	-	26	98	338
PPF	HEC "Peshke"	3.430	"Koka & Ergi Energy Peshk" shpk	35kV	570	1,092	1,326	1,314	1,774	1,007	-	-	-	547	1,710	2,085	11,425
PPF	HEC "Labinot-Mal"	0.250	"Ansara Koncension" shpk	6kV	16	32	23	21	27	32	10	1	1	1	17	44	225
PPF	HEC "Pobreg"	12.300	"Energy Plus" shpk	35kV	2,009	3,691	4,551	6,718	7,277	4,950	637	50	333	544	1,939	3,950	36,651
PPF	HEC "Vlushe"	14.200	"Hec Vlushe" shpk	35kV	4,590	4,643	3,450	5,177	5,770	2,022	598	-	155	319	5,037	6,618	38,378
PPF	HEC "Belesova 1"	0.150	"Korkis 2009" shpk	6kV	-	41	106	62	39	-	-	-	-	-	22	24	294
PPF	HEC "Faqekuq 1,2"	6.400	"HP OSTROVICA" shpk	35kV	755	1,195	1,886	2,994	3,249	1,272	350	28	17	95	2,416	2,732	16,988
PPF	HEC "Shemri"	1.000	"Erald Energjitik" shpk	10	97	274	286	314	586	200	0	0	0	5	183	368	2,315
PPF	HEC "Mgulle"	0.280		10kV	101	210	215	228	296	142	6	0	5	6	122	229	1,560
PPF	HEC "Kryezi 1"	0.600	"Bekim Energjitik" shpk	10kV	137	484	416	315	607	176	-	-	-	-	420	532	3,088
PPF	HEC "Selishte"	2.000	"Selishte" shpk	35kV	197	509	489	726	980	513	118	52	41	11	56	863	5,054
PPF	HEC "Carshove"	1.500	"ERMA MP" shpk	10kV	482	546	231	200	239	103	-	-	-	88	376	663	2,928
PPF	HEC "Ura e Dashit"	1.200	"Idro Energjia Pulita" shpk	10kV	1,445	1,662	1,006	952	1,118	500	45	-	23	37	976	1,978	9,742
PPF	HEC "Gizavesh"	0.500	"Dosku Energy" shpk	10kV	195	205	213	220	268	237	128	53	100	165	238	271	2,292
PPF	HEC "Koka 1"	3.200	"Snow Energy" shpk	35kV	28	115	705	804	897	302	113	145	114	109	895	1,100	5,328
PPF	HEC "Stravaj"	3.600	"Stravaj Energji" shpk	35kV	591	1,090	1,160	1,149	1,580	761	207	9	96	220	808	1,542	9,214
PPF	HEC "Picar 1"	0.200	"Peshku Picar 1" shpk	6kV	15	50	45	39	29	19	-	-	-	-	36	82	315
PPF	HEC "Vertop"	1.520	"Hydro Salillari Energy" shpk	35kV	393	434	237	336	488	224	-	-	-	-	141	381	2,634
PPF	HEC "Martanesh"	10.500	"Albanian Power" shpk	35kV	626	1,341	2,183	2,357	2,883	1,493	36	7	340	363	2,327	3,014	16,971
PPF	HEC "Verba 1,2"	5.000	"Hydro power Plant Of Korca" shpk	35kV	274	283	866	1,411	2,196	963	380	131	159	150	1,013	1,429	9,255

PEE	HEC"Tertra"	1.080	"Hidro Borshi" shpk	35kV	932	854	738	699	686	512	426	333	259	210	646	1,187	7,481
PEE	HEC"Ostren i Vogel"	0.320	"Lu & Co Eeo Energy" shpk	10kV	29	37	50	51	60	65	49	37	31	27	22	41	499
PEE	HEC"Kozel"	0.500		10kV	88	143	234	203	184	123	-	-	-	139	234	1,349	
PEE	HEC"Helmes 1"	0.800	"E.T.H.H." shpk	10kV	166	330	396	376	285	152	14	-	10	32	186	426	2,371
PEE	HEC"Helmes 2"	0.500		10kV	87	187	184	196	171	79	11	-	2	104	230	1,249	
PEE	HEC"Qafezeze"	0.400	"Caushi Energji" shpk	10kV	224	252	276	354	460	225	46	35	39	46	352	569	2,876
PEE	HEC"Trebishit"	1.775	"SA.GLE.Kompani" shpk	10kV	-	157	304	410	671	247	-	-	-	49	376	2,214	
PEE	HEC"Mollaj"	0.600	"Energji Xhaci" shpk	10kV	78	110	150	133	108	94	41	-	62	55	178	1,010	
PEE	HEC"Tucep"	0.400	"Tucep" shpk	10kV	182	186	217	212	227	223	196	166	173	176	161	209	2,327
PEE	HEC"Treska4"	3.600		35kV	866	1,500	1,733	1,225	1,057	692	374	235	206	199	735	1,583	10,404
PEE	HEC"Treska3"	0.300	"Hec-Treske"shpk	35kV	101	178	224	186	134	78	33	20	18	21	128	213	1,334
PEE	HEC"Treska 2I"	0.620		35kV	170	366	450	292	299	168	70	37	33	40	193	394	2,512
PEE	HEC"Stotire I & 2"	2.200	"Hidro Energy Stotire"shpk	35kV	411	394	272	556	994	840	342	45	0	332	916	5,102	
PEE	HEC"Shutine"	2.400	"Shutina energji"shpk	10kV	347	425	362	249	761	191	-	-	-	366	299	3,001	
PEE	HEC"Cekrez 1,2"	0.660	"Zall Herr Energji 2011"shpk	6kV	396	331	363	377	395	346	350	363	316	343	324	378	4,281
PEE	HEC"Qarr"	1.000	"Hec Qarr & Kaltan"shpk	35kV	432	697	599	366	477	230	144	109	155	135	683	782	4,809
PEE	HEC"Bisak"	1.300	"Bardhgjana" shpk	6kV	309	262	346	336	549	561	129	11	-	204	662	3,371	
PEE	HEC"Shales"	1.080	"Gjoka Konstruktion Energji" shpk	35kV	37	68	261	393	346	127	27	-	-	1	-	1,261	
PEE	HEC"Strelca"	1.174		35kV	352	530	692	757	759	914	72	-	-	171	894	4,542	
PEE	HEC"Shpelle"	0.400	"Sarolli" sh.p.k	10kV	52	76	191	278	247	97	36	20	21	17	110	184	1,331
PEE	HEC"Bicaj"	3.100	"EN-KUJ" sh.p.k	10kV	-	-	-	-	-	-	-	-	-	-	-	-	-
PEE	HEC"Leskovik 1"	1.072	"Maksi Elektrik" sh.p.k	10kV	46	46	50	47	44	31	11	-	2	29	40	45	390
PEE	HEC"Leskovik 2"	1.100		10kV	58	55	63	61	60	48	21	-	4	40	48	57	514
PEE	HEC"Orenje"	0.875	"Juana" sh.p.k	10kV	50	93	70	64	130	115	24	-	-	84	152	781	
PEE	HEC"Tamare"	0.750	"WTS Energji" shpk	10kV	60	69	42	-	56	47	-	-	-	27	52	42	395
PEE	HEC"Bene"	1.000	"Marjakaj" shpk	6kV	173	175	176	193	206	131	-	-	-	212	182	1,449	
PEE	HEC"Vithkuq"	2.715	"Favina 1" shpk	35/10kV	588	1,194	1,733	1,783	1,443	702	217	145	95	94	1,363	1,731	11,087
PEE	HEC"Selece"	1.600	"Selece Energji" shpk	10kV	311	436	725	764	699	478	81	48	85	128	498	566	4,819
PEE	HEC"Kumbull- Merkurth"	0.830	"DN & NAT Energy"shpk	6kV	41	71	155	283	459	168	-	-	-	25	234	289	1,725
PEE	HEC" Sasaj"	8.600	"Energjo - Sas" shpk	35kV	2,944	2,948	2,584	2,397	2,229	1,083	334	406	726	1,394	2,748	3,146	22,939
PEE	HEC" Tervol"	10.600	"Hec i Tervolit" shpk	35kV	2,827	3,239	2,552	4,339	5,302	2,646	1,146	377	677	403	3,117	4,885	31,510
PEE	HEC"Radove"	2.500	"MTC Energy" shpk	10kV	1,140	1,353	647	558	613	373	195	135	133	322	1,025	1,540	8,032
PEE	HEC"Gurshpat 1"	0.840	"Gurshpat Energy" shpk	10kV	137	167	133	170	392	501	210	33	74	93	130	335	2,374
PEE	HEC"Gurshpat 2"	0.830		10kV	239	274	199	258	524	559	166	24	105	143	226	514	3,231
PEE	HEC" Bistrica 3"	1.570	"Bistrica 3 Energy" shpk	6kV	757	767	736	704	687	612	552	514	491	499	783	979	8,081
PEE	HEC"Hurdhas 1"	1.710	"Komp Energji" shpk	6kV	977	998	440	747	1,697	787	113	51	158	19	-	-	5,988
PEE	HEC"Perrollaj"	0.500	"Fatlum" shpk	10kV	83	50	2	-	46	-	29	-	-	12	57	278	
PEE	HEC"Koxheraj"	0.620	"Koxherri Energji" shpk	10kV	111	150	105	102	207	134	18	13	51	59	188	256	1,393
PEE	HEC"Kacni"	3.870	"Kisi-Bio-Energji" shpk	20kV	-	63	344	678	756	351	-	-	56	3	751	936	3,939
PEE	HEC"Lena 1"	1.950		35kV													
PEE	HEC"Lena 2"	2.300	"Gamma Energy" shpk	35kV	120	415	997	1,110	1,287	528	2	-	92	2	1,390	1,322	7,266
PEE	HEC"Lena 2A"	0.250		35kV													
PEE	HEC"Driza"	3.408	"Mesopotam Energy" shpk	35kV	336	360	227	173	179	135	83	35	-	331	614	2,474	
PEE	HEC Strelca 1,2,3	5.349	"Strelca Energy" shpk	35kV	581	780	1,565	1,997	2,704	960	559	258	283	295	1,317	2,058	13,355
PEE	HEC"Ujanik 2"	2.500	"HP Ujaniku Energy" shpk	35kV	561	655	727	831	923	177	7	0	0	1	459	1,126	5,466
PEE	HEC"Nishove"	1.360	"Nishova Energy" shpk	35kV	139	264	-	105	106	85	53	17	25	-	103	897	
PEE	HEC" Shtika"	1.300	"Perparimi SK" shpk	10kV	442	572	190	158	300	78	-	-	-	51	308	2,098	
PEE	HEC"Ballenie"	1.900	"Ballenja Power Martanesh" shpk	35kV	72	123	457	536	727	294	-	-	-	751	657	3,618	
PEE	HEC Gavran 1	0.998	"Gavran Energy" shpk	35kV	100	219	335	389	474	153	-	-	-	222	383	2,276	
PEE	HEC Gavran 2	1.215	"Gavran Energy" shpk	35kV	62	109	251	359	395	173	75	-	-	191	277	1,892	
PEE	HEC Kasollet e Selces 1	4.000	"Xhango Energji" shpk	35kV	573	1,145	1,145	859	1,432	286	286	286	286	286	573	1,432	8,591
PEE	HEC Holta Kabash	2.200	HEC Kabash Porocan shpk	35kV	839	1,121	1,349	1,250	1,354	883	436	199	252	176	872	1,749	10,480
PEE	HEC Holta Porocan	3.300		35kV													
PEE	HEC Lusen 1	0.315	"Eurobiznes" shpk	35kV	20	24	35	-	-	-	27	3	-	25	59	194	
PEE	HEC Ura e Fanit	1.000	"Ayen As Energji"shpk	35kV	374	383	372	401	532	461	473	442	284	316	367	499	4,905
PEE	HEC Gorice	1.747	"THE BLUE STAR" sh.p.k	35kV	153	357	589	644	636	285	-	-	-	402	697	3,763	
PEE	HEC Kabash 1&2	5.800	"Univers Energji" shpk	35kV	210	315	315	210	630	315	-	-	-	105	210	2,310	
PEE	HEC "Tucep 2"	1.7	"DUKA T2" shpk	35kV	153	149	192	82	226	217	144	105	109	132	103	-	1,611
PEE	HEC Dobrenje Tomorric	2.4	DAAB Energy Group shpk	35kV	340	368	308	312	231	231	168	147	221	217	291	462	3,294

PPE	HEC Razdoll	0.765	Hidro Vizion shpk (1 pa licens nga ERE	35kV	-	35	144	317	395	132	34	7	10	28	298	276	1,676
PPE	HEC Dragostunje	3.1	"HEC-i Dragostunje" shpk	35kV	560	746	987	1,749	2,873	1,009	-	-	206		1,652	2,433	12,214
PPE	HEC Stebleve	3.4	"PURE ENERGY STEBLEVA" shpk	35kV	-	3	93	204	370	112	-	-	-		132	464	1,380
PPE	HEC Zerec 1	0.55	"EnRel Hydro" shpk	35kV	-	-	-	846	688	332	98	45	36	27	391	730	3,195
PPE	HEC Zerec 2	1.315															
PPE	HEC Shëngjon 1	0.651	"EDIANI" sh.p.k.	35kV	-	10	-	96	220	224	43	10	6	6	98	274	987
PPE	HEC Shëngjon 2	0.356															
PPE	HEC Bllaç	1.3	"BLAC ENERGY" sh.p.k	35kV	-	-	-	164	167	104	20	13	5	7	182	216	878
PPE	HEC Qarrishtë	0.3	"IDI-2005" SHPK	35kV	-	-	-	-	34	111	-	-	-		154	208	507
PPE	HEC Vendresh	0.456	"HP VENDRESH ENERGY" SHPK	35kV	-	-	-	-	-	7	-	-	-		16	38	60
PPE	HEC "Antena"	1.105	"DERBI-E" shpk	35kV	-	-	-	-	-	217	-	-	-	27	16	464	1,158
PPE	HEC "Kamenice"	0.973	HP Kamenica shpk	10	-	-	-	-	-	-	-	64	44	49	345	530	1,031
PPE	HEC "Qytezë"	0.9	Muso hec Qytezë	10	-	-	-	-	-	-	-	4	14	24	148	310	499
PPE	HEC Marjan Gura e Vesheve	0.63	Marituda Shpk	10	-	-	-	-	-	-	62	20	9	4	102	225	421
PPE	HEC Skatinë	2.677	Skatina Hec Shpk	10	-	-	-	-	-	-	32	18	12	14	192	560	828
PPE	HEC Kaparjel	0.2	ABV Konstruksion Shpk	10	-	-	-	-	-	-	-	33	9	9	42	53	147
PPE	HEC Letaj	0.54	Asi-Tre Shpk	10										10	129	171	310
PPE	HEC Nice	2.133	MP-HEC Shpk	35												145	145
PPE	HEC Meshurdhe	1.8	SIMA-Com Shpk	10												795	795
PPE	HEC Thanez	1.95	AFRIMI K Shpk	35											828	975	1,803
		265															646,366

265

PRODHIMI GJATE VITIT 2019 NGA CENTRALET FOTOVOLTAIKE TË LIDHURA NE RRJETIN E SHPERNDARJES (MWh)

CENTRAL FOTOVOLTAIK		MW	SUBJEKTI	LIDHJA	JANAR	SHKURT	MARS	PRILL	MAJ	QERSHOR	KORRIK	GUSHT	SHTATOR	TETOR	NENTOR	DHJETOR	2019
PPE	UKKO (pa sist)	1.000	"UKKO"sha (Ujssjell. Kanal.Korce														
PPE	Seman – 2	2	"SEMAN2SUN" sh.p.k	35 kV	262	183	376	354	383	422	452	452	340	307	154	156	3,840
PPE	Topojë	1.998	"SONNE" sh.p.k	35 kV	271	236	375	352	382	441	450	447	337	306	153	156	3,905
PPE	Topojë 2	1.998	"AED SOLAR" sh.p.k	35 kV	270	194	374	351	380	439	450	450	338	306	153	157	3,862
PPE	Topojë (Sheq Marinas)	2	"AGE SUNPOWER" sh.p.k	35 kV	273	236	375	351	380	439	449	449	338	306	152	156	3,903
PPE	Topojë (Sheq Marinas) 2	2	"SEMAN SUNPOWER" sh.p.k	35 kV	236	238	380	355	384	423	455	455	342	309	155	159	3,891
PPE	Seman solar	2	SEMANISOLAR sh.p.k	35 kV	-	-	-	-	-	-	-	-	247	344	176	185	953
PPE	Plug, Lushnje	2	"AEE"sh.p.k	10 kv	-	-	-	-	-	282	350	350	281	279	145	158	1,844
		14.996															22,196

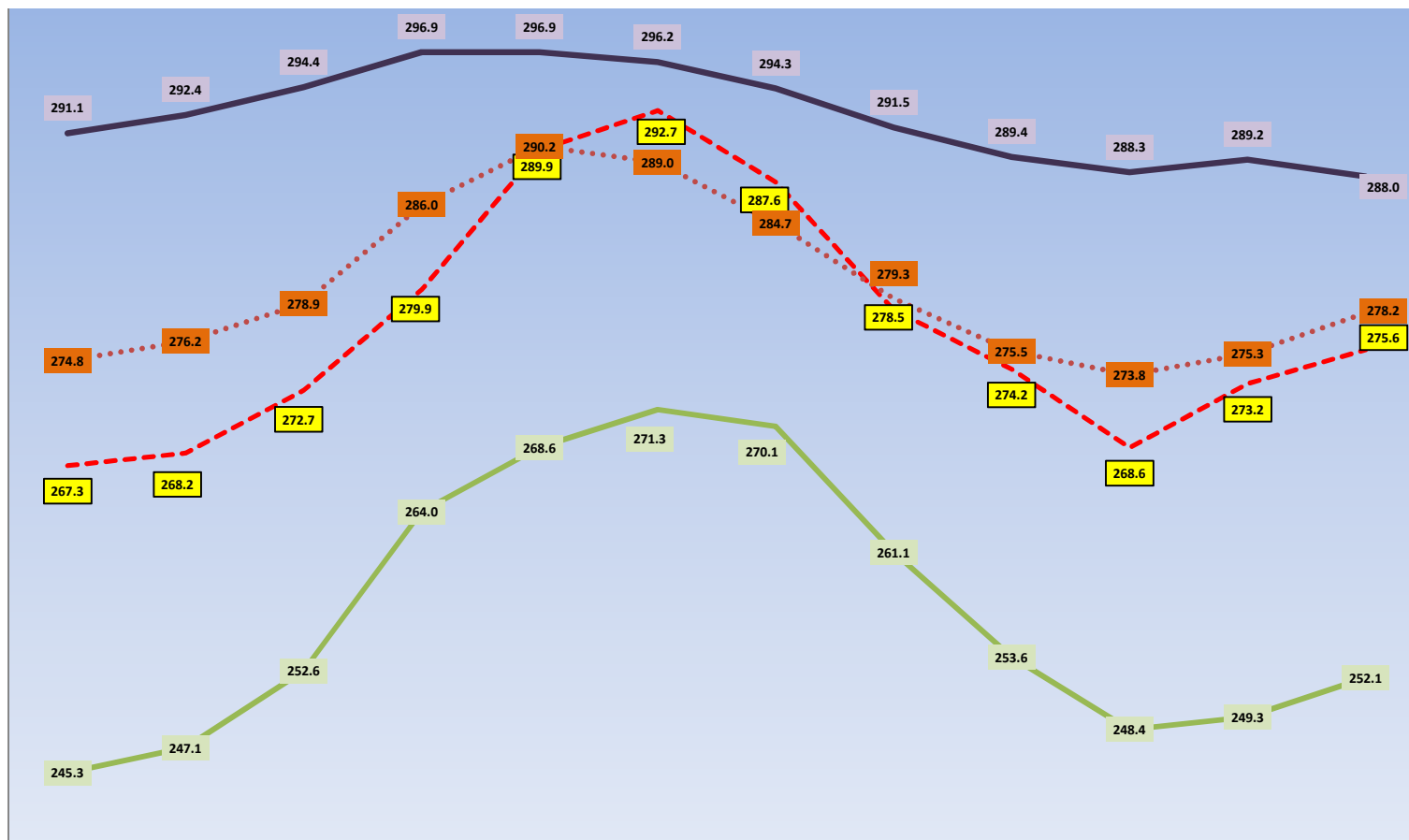
LEGJENDA

P.Pub	Prodhues Publik (Ngarkuar me detyrimin e shërbimit Publik)
P.Pav	Prodhues të Pavarur (Prodhues në treg të Hapur)
PPE	Prodhues me Përparesi (Përfitojnë nga Skemat Mbështetëse)

	NIVELI I FIERZES 1991-2019											
	Janar	Shkurt	Mars	Prill	Maj	Qershor	Korrik	Gusht	Shtator	Tetor	Nentor	Dhjetor
1991	254.4	260.8	268.6	279.9	293.4	296.1	294.0	291.5	289.4	288.3	288.8	285.1
1992	278.0	274.1	268.0	278.8	281.0	279.6	275.2	268.7	263.9	271.4	281.9	280.6
1993	275.2	265.3	264.7	278.5	280.5	277.3	271.0	261.1	253.6	249.9	255.6	270.2
1994	254.4	260.8	268.6	279.9	293.4	296.1	294.0	291.5	289.4	288.3	288.8	285.1
1995	253.8	260.3	262.5	275.3	289.0	288.7	284.5	282.2	288.2	283.8	279.9	287.5
1996	287.1	288.7	286.5	294.7	295.8	293.1	287.6	282.2	285.1	284.3	289.2	291.3
1997	289.4	284.5	281.7	285.2	294.1	292.0	287.0	280.0	272.9	272.4	270.8	277.2
1998	273.7	270.0	265.2	278.9	288.1	287.4	281.8	277.6	276.0	277.1	279.0	277.1
1999	272.7	275.6	281.5	290.5	295.9	293.3	288.3	279.5	271.0	257.6	263.6	276.9
2000	276.4	276.7	276.8	286.9	286.6	280.1	273.5	267.5	261.6	248.4	249.3	252.1
2001	253.6	258.2	275.1	282.9	287.6	283.8	273.7	271.1	269.2	263.6	263.2	252.1
2002	245.3	247.1	252.6	264.0	268.6	271.3	270.1	267.8	274.3	286.1	285.3	284.0
2003	291.1	289.5	286.3	287.0	292.3	290.3	285.9	280.8	276.0	282.6	285.6	283.3
2004	284.7	290.8	293.4	296.0	296.2	296.2	293.1	286.3	281.1	280.0	286.1	288.0
2005	281.2	281.5	293.3	296.1	295.6	294.1	286.7	277.2	266.5	256.9	253.6	279.0
2006	283.5	288.6	294.4	295.9	296.5	295.9	293.8	290.2	285.3	278.7	266.2	256.2
2007	256.1	263.7	272.0	276.8	276.8	274.8	268.5	263.6	261.8	261.1	275.8	282.1
2008	285.1	289.7	290.9	295.5	295.3	295.7	294.3	288.6	283.9	280.9	285.2	286.5
2009	283.6	281.8	283.4	292.5	293.7	292.4	288.0	281.2	276.2	271.6	266.3	280.1
2010	290.1	289.2	293.9	296.0	296.3	294.4	291.8	288.6	284.9	285.2	284.3	287.5
2011	281.6	274.4	275.0	276.6	281.0	286.1	284.7	279.0	273.9	268.2	261.6	264.5
2012	265.8	267.7	262.0	280.2	293.4	294.4	288.4	280.4	261.4	261.6	269.0	276.6
2013	278.3	281.5	294.8	296.9	296.9	294.2	289.7	283.6	280.8	281.4	282.5	276.1
2014	275.1	277.5	274.6	285.3	292.9	294.9	291.7	286.8	285.5	285.0	284.8	286.3
2015	288.7	289.4	292.2	296.3	296.1	293.3	287.5	280.1	272.1	275.4	278.9	275.9
2016	289.9	292.4	291.8	296.5	296.2	295.6	290.5	285.4	283.3	288.4	288.9	281.6
2017	271.5	277.7	280.9	278.7	281.6	272.4	270.2	268.0	271.0	264.6	269.6	289.9
2018	289.7	292.0	295.0	296.5	296.4	296.0	294.0	287.5	277.9	270.2	266.5	267.3
2019	267.3	268.2	272.7	279.9	289.9	292.7	287.6	278.5	274.2	268.6	273.2	275.6

	Janar	Shkurt	Mars	Prill	Maj	Qershor	Korrik	Gusht	Shtator	Tetor	Nentor	Dhjetor
2019	267.3	268.2	272.7	279.9	289.9	292.7	287.6	278.5	274.2	268.6	273.2	275.6
Mesatarja	274.8	276.2	278.9	286.0	290.2	289.0	284.7	279.3	275.5	273.8	275.3	278.2
Minimumi	245.3	247.1	252.6	264.0	268.6	271.3	270.1	261.1	253.6	248.4	249.3	252.1
Maksimumi	291.1	292.4	294.4	296.9	296.9	296.2	294.3	291.5	289.4	288.3	289.2	288.0

NIVELI I FIERZES GJATE 2019 KRAHESUAR ME (Min,Maks dhe Mesataren historike) (m)

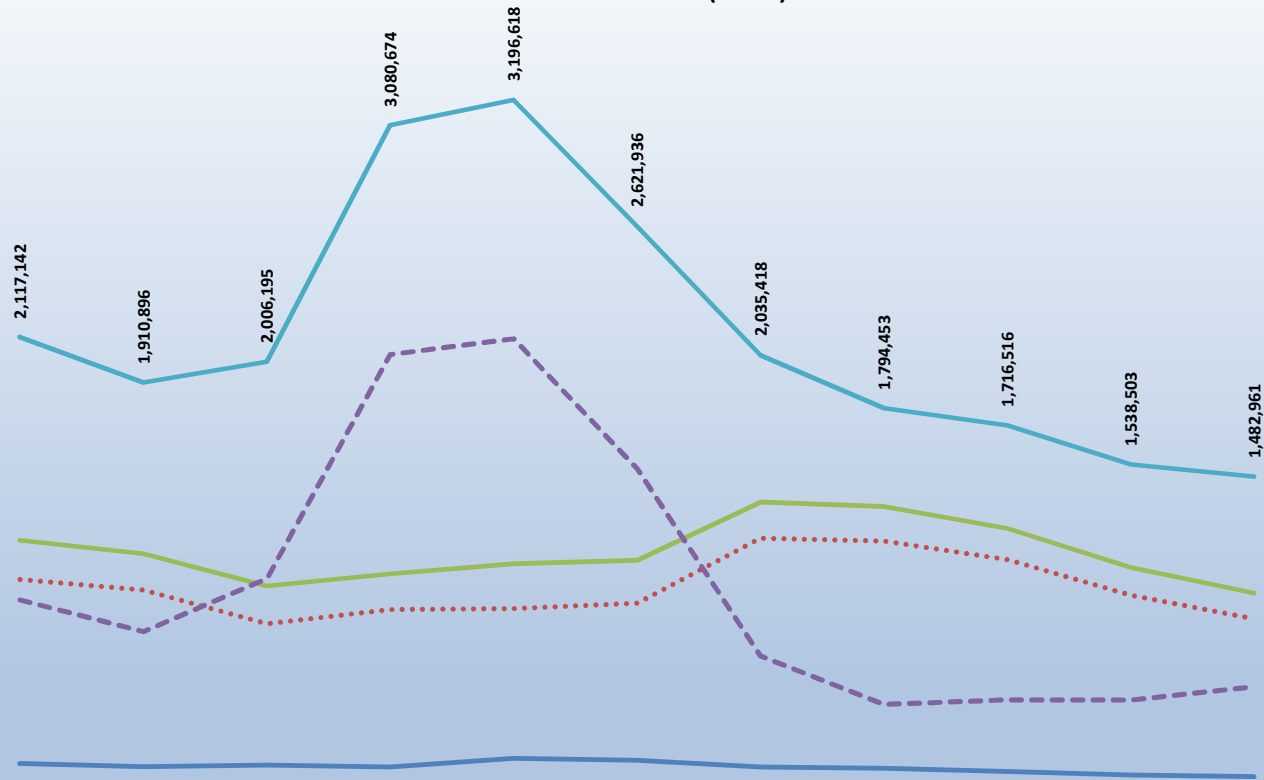


	Janar	Shkurt	Mars	Prill	Maj	Qershor	Korrik	Gusht	Shtator	Tetor	Nentor	Dhjetor
2019	267.3	268.2	272.7	279.9	289.9	292.7	287.6	278.5	274.2	268.6	273.2	275.6
Mesatarja	274.8	276.2	278.9	286.0	290.2	289.0	284.7	279.3	275.5	273.8	275.3	278.2
Minimumi	245.3	247.1	252.6	264.0	268.6	271.3	270.1	261.1	253.6	248.4	249.3	252.1
Maksimumi	291.1	292.4	294.4	296.9	296.9	296.2	294.3	291.5	289.4	288.3	289.2	288.0

HUMBJET NE RRJETIN E SHPERNDARJES 2009-2019 (MWh)

	2009	2010	2011	2012	2013	2014	2015	2016	2017	2018	2019
HUMBJE TEKNIKE NE TL (N/ST)	178,738	163,546	170,937	161,831	201,684	193,208	162,725	155,629	141,707	125,974	117,739
HUMBJE TEKNIKE NE ZONAT E OSHEE	1,015,450	968,535	814,826	879,616	884,360	908,416	1,203,793	1,190,872	1,106,007	944,587	836,561
TOTALI I HUMBJEVE TEKNIKE OSHEE	1,194,188	1,132,081	985,763	1,041,447	1,086,044	1,101,624	1,366,518	1,346,501	1,247,714	1,070,560	954,300
HUMBJE JOTOKNIKE OSHEE	922,954	778,815	1,020,432	2,039,227	2,110,575	1,520,312	668,900	447,952	468,802	467,943	528,661
TOTALI I HUMBJEVE OSHEE	2,117,142	1,910,896	2,006,195	3,080,674	3,196,618	2,621,936	2,035,418	1,794,453	1,716,516	1,538,503	1,482,961

HUMBJET NE RRJETIN E SHPERNDARJES 2009-2019 (MWh)



	2009	2010	2011	2012	2013	2014	2015	2016	2017	2018	2019
HUMBJE TEKNIKE NE TL (N/ST)	178,738	163,546	170,937	161,831	201,684	193,208	162,725	155,629	141,707	125,974	117,739
HUMBJE TEKNIKE NE ZONAT E OSHEE	1,015,450	968,535	814,826	879,616	884,360	908,416	1,203,793	1,190,872	1,106,007	944,587	836,561
TOTALI I HUMBJEVE TEKNIKE OSHEE	1,194,188	1,132,081	985,763	1,041,447	1,086,044	1,101,624	1,366,518	1,346,501	1,247,714	1,070,560	954,300
HUMBJE JOTOKNIKE OSHEE	922,954	778,815	1,020,432	2,039,227	2,110,575	1,520,312	668,900	447,952	468,802	467,943	528,661
TOTALI I HUMBJEVE OSHEE	2,117,142	1,910,896	2,006,195	3,080,674	3,196,618	2,621,936	2,035,418	1,794,453	1,716,516	1,538,503	1,482,961

FATURIM-ARKETIMET DHE NDRYSHIMI I GJENDJES DEBITORE GJTE VITIT 2014 (000/LEKE)									
Viti 2014	Te arketueshme sipas 31.12.2013 CEZ Shperndarje	Faturuar 2014	arketimi per fakturat e 2014	Arketimi per fakturat e 2007-2013	Arketimi total	Te Arketueshme per energjine e fakturuar ne vitin 2014	Ndryshimi i gjendjes se Logarive te arketueshme gjate vitit 2014	Shuarje Detyrimesh me VKM nr 198, dt 03.04.2014	
	71,374,447								
<i>pa hedhur</i>	<i>#REF!</i>	2	5	7	6=5+7	9=(2-5)	10=(2-5-7-a)	a	
Janar	72,385,326	4,899,949	3,593,288	295,782	3,889,070	1,306,661	-	1,010,880	0
Shkurt	73,231,148	4,623,941	1,224,858	2,553,261	3,778,119	3,399,083	-	845,821	0
Mars	73,905,562	4,645,564	3,226,836	744,315	3,971,150	1,418,729	-	674,414	0
Prill	70,676,446	4,538,921	3,291,530	680,634	3,972,164	1,247,391	-	3,229,116	3,795,873
Maj	71,544,530	4,190,118	3,345,044	374,413	3,719,457	845,074	-	868,084	(397,423)
Qershor	72,209,337	4,025,464	3,065,523	295,134	3,360,657	959,941	-	664,807	0
Korrik	72,816,893	4,097,547	3,184,902	305,088	3,489,991	912,644	-	607,556	0
Gusht	73,694,774	4,299,885	3,115,141	311,467	3,426,607	1,184,744	-	877,881	(4,604)
Shtator	72,527,145	4,065,705	3,348,188	1,069,912	4,413,100	722,518	-	1,167,630	820,235
Tetor	72,630,240	4,280,796	3,647,110	457,224	4,104,334	633,686	-	103,095	73,367
Nentor	72,771,144	4,504,528	3,459,192	904,432	4,363,624	1,045,336	-	140,904	0
Dhjetor	71,406,047	4,985,556	4,273,473	2,077,180	6,350,653	712,083	-	1,365,097	0
Total		53,157,974	38,770,084	10,068,842	48,838,927	14,387,890			4,287,488

FATURIM-ARKETIMET DHE NDRYSHIMI I GJENDJES DEBITORE GJTE VITIT 2015 (000/LEKE)									
Viti 2015	Te arketueshme sipas 31.12.2014 OSHEE 71 406 047	Faturuar 2015	arketimi per fakturat e 2015	Arketimi per fakturat e 2007-2014	Arketimi total	Te Arketueshme per energjine e fakturuar ne vitin 2015	Ndryshimi i gjendjes se Logarive te arketueshme gjate vitit 2015	Shuarje Detyrimesh	
	71,406,047								
<i>pa hedhur</i>	<i>#REF!</i>	2	5	7	6=5+7	9=(2-5)	10=(2-5-7-a)	a	
Janar	71,336,669	5,549,211	58,285	5,560,203	5,618,588	5,490,626	-	69,378	0
Shkurt	70,243,444	5,593,064	4,241,684	2,444,805	6,685,299	1,351,680	-	1,093,225	0
Mars	70,034,144	5,588,150	4,663,802	1,133,648	5,797,450	924,348	-	209,300	0
Prill	68,812,916	4,953,074	4,470,298	366,900	4,837,198	482,776	-	1,221,229	1,337,105
Maj	66,868,972	4,521,837	4,234,873	504,756	4,739,629	286,963	-	1,943,943	1,726,151
Qershor	67,098,219	4,691,930	4,081,633	309,420	4,391,053	610,297	-	229,247	71,630
Korrik	67,547,043	5,258,700	4,246,167	372,576	4,618,743	1,012,633	-	448,824	191,133
Gusht	67,611,751	5,241,968	4,481,964	354,383	4,836,347	760,004	-	64,709	340,933
Shtator	67,453,478	4,835,022	4,700,033	293,262	4,993,295	134,989	-	158,274	0
Tetor	67,286,789	4,683,924	4,541,794	308,818	4,850,612	142,130	-	166,689	0
Nentor	67,559,634	4,991,543	4,020,208	299,490	4,319,698	971,335	-	672,845	0
Dhjetor	68,803,189	5,872,243	4,750,948	377,740	5,128,688	1,124,585	-	843,555	0
Total		61,760,665	48,491,589	12,225,002	60,716,591	13,289,076			3,666,932

FATURIM-ARKETIMET DHE NDRYSHIMI I GJENDJES DEBITORE GJTE VITIT 2016 (000/LEKE)									
Viti 2016	Te arketueshme sipas 31.12.2015 OSHEE	Faturuar 2016	arketimi per fakturat e 2016	Arketimi per fakturat e 2007-2015	Arketimi total	Te Arketueshme per energjine e fakturuar ne vitin 2016	Ndryshimi i gjendjes se Logarive te arketueshme gjate vitit 2016	Shuarje Detyrimesh	
	68,803,189								
<i>pa hedhur</i>	<i>#REF!</i>	2	5	7	6=5+7	9=(2-5)		a+b	
Janar	69,383,532	5,987,971	11,010	5,396,619	5,407,628	5,976,962	-	580,343	0
Shkurt	69,618,271	5,445,503	3,744,680	1,455,075	5,199,755	1,700,824	-	234,739	0
Mars	69,927,158	5,513,517	4,673,435	531,195	5,204,630	840,082	-	308,887	0
Prill	69,788,727	4,826,977	4,641,557	331,851	4,965,408	185,420	-	138,431	0
Maj	67,042,795	4,835,733	4,504,256	276,918	4,781,174	331,477	-	2,745,932	2,800,490
Qershor	67,501,589	4,525,728	4,203,847	245,816	4,449,663	321,881	-	458,794	0
Korrik	68,121,673	5,241,459	4,390,083	231,293	4,621,375	851,376	-	620,084	0
Gusht	68,364,412	5,309,834	4,799,986	267,109	5,067,095	509,848	-	242,739	0
Shtator	68,350,354	4,844,483	4,650,851	207,690	4,858,541	193,633	-	14,058	0
Tetor	68,499,705	4,834,628	4,480,377	204,901	4,685,278	154,252	-	149,351	0
Nentor	69,372,496	5,236,378	4,175,054	188,533	4,363,587	1,061,324	-	872,791	0
Dhjetor	70,720,061	6,410,681	4,854,705	208,411	5,063,116	1,555,976	-	1,347,565	0
Total		63,012,893	49,129,839	9,537,411	58,667,251	13,883,054			2,800,490

FATURIM-ARKETIMET DHE NDRYSHIMI I GJENDJES DEBITORE GJTE VITIT 2017 (000/LEKE)									
Viti 2017	Te arketueshme sipas 31.12.2016 OSHEE	Faturuar 2017	arketimi per fakturat e 2017	Arketimi per fakturat e 2007-2016	Arketimi total	Te Arketueshme per energjine e fakturuar ne vitin 2017	Ndryshimi i gjendjes se Logarive te arketueshme gjate vitit 2017	Shuarje Detyrimesh	
	70,720,061								
<i>pa hedhur</i>	<i>#REF!</i>	2	5	7	6=5+7	9=(2-5)			
Janar	71,449,571	6,192,711	2,680	5,460,521	5,463,201	6,190,031	-	729,510	0
Shkurt	71,348,179	5,323,527	3,823,606	1,601,313	5,424,919	1,499,921	-	101,392	0
Mars	70,863,992	5,141,318	4,963,971	661,534	5,625,505	177,347	-	484,187	0
Prill	70,863,942	4,857,464	4,525,615	331,899	4,857,514	331,849	-	50	0
Maj	70,398,535	4,667,810	4,599,520	533,697	5,133,217	68,290	-	465,407	0
Qershor	70,787,603	4,675,924	4,055,720	231,137	4,286,856	620,204	-	389,068	0
Korrik	71,320,868	5,435,009	4,599,634	302,110	4,901,744	835,375	-	533,265	0
Gusht	71,661,546	5,635,939	4,996,203	299,058	5,295,261	639,736	-	340,678	0
Shtator	71,152,686	4,824,463	5,046,489	286,834	5,333,323	222,026	-	506,860	0
Tetor	71,047,597	4,902,445	4,759,610	247,923	5,007,534	142,834	-	105,089	0
Nentor	72,031,524	5,527,306	4,313,657	229,722	4,543,379	1,213,649	-	983,927	0
Dhjetor	72,848,682	6,347,229	5,153,618	376,452	5,530,070	1,193,611	-	817,158	0
Total									

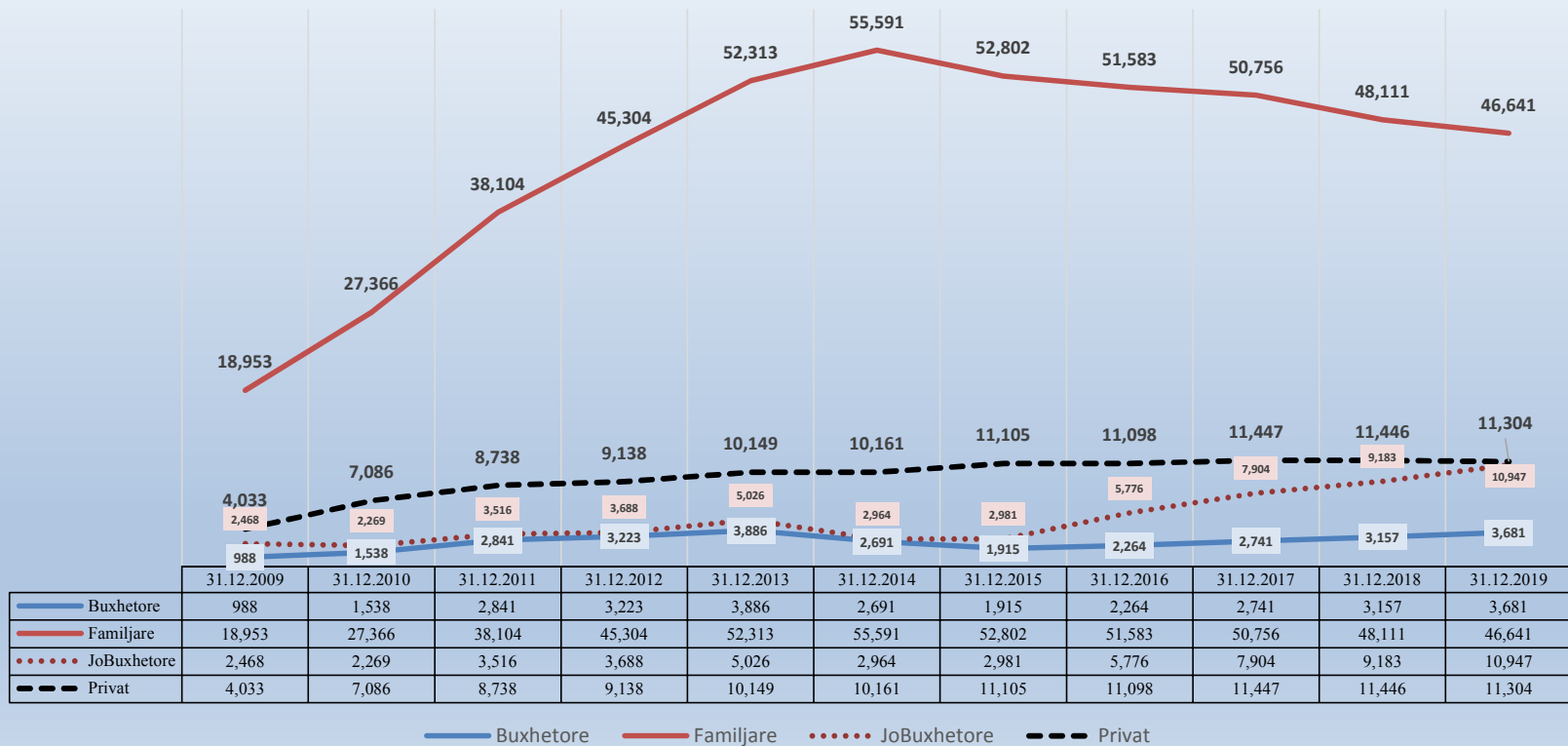
FATURIM-ARKETIMET DHE NDRYSHIMI I GJENDJES DEBITORE GJTE VITIT 2018 (000/LEKE)									
Viti 2018	Te arketueshme sipas 31.12.2017 OSHEE	Faturuar 2018	arketimi per fakturat e 2018	Arketimi per fakturat e 2007-2017	Arketimi total	Te Arketueshme per energjine e fakturuar ne vitin 2018	Ndryshimi i gjendjes se Logarive te arketueshme gjate vitit 2018	Shuarje Detyrimesh	
	72,848,682								
<i>pa hedhur</i>	<i>#REF!</i>	2	5	7	6=5+7	9=(2-5)			
Janar	72,669,803	5,939,299	62,280	6,055,898	6,118,178	5,877,019	-	178,879	0
Shkurt	72,671,709	5,685,334	3,857,605	1,825,823	5,683,429	1,827,729	-	1,905	0
Mars	72,336,005	5,680,352	5,325,171	690,885	6,016,056	355,181	-	335,704	0
Prill	71,388,405	4,671,224	5,191,294	427,580	5,618,874	520,070	-	947,600	0
Maj	70,904,609	4,731,173	4,839,352	275,617	5,214,970	108,179	-	483,797	0
Qershor	71,142,033	4,976,161	4,395,221	343,516	4,738,737	580,940	-	237,425	0
Korrik	71,320,917	5,403,874	4,895,796	329,195	5,224,991	508,078	-	178,883	0
Gusht	71,608,055	5,805,751	5,141,751	376,861	5,518,612	664,000	-	287,139	0
Shtator	71,254,995	5,047,859	5,088,650	312,669	5,400,919	40,791	-	353,061	0
Tetor	70,741,012	4,975,893	5,162,026	327,849	5,489,875	186,133	-	513,982	0
Nentor	71,270,659	5,318,350	4,317,124	471,580	4,788,703	1,001,226	-	529,647	0
Dhjetor	71,896,707	6,625,289	5,579,121	420,120	5,999,241	1,046,168	-	626,048	0
Total									

FATURIM-ARKETIMET DHE NDRYSHIMI I GJENDJES DEBITORE GJTE VITIT 2019 (000/LEKE)									
Viti 2019	Te arketueshme sipas 31.12.2018 OSHEE	Faturuar 2019	arketimi per fakturat e 2019	Arketimi per fakturat e 2007-2018	Arketimi total	Te Arketueshme per energjine e fakturuar ne vitin 2019	Ndryshimi i gjendjes se Logarive te arketueshme gjate vitit 2019	Shuarje Detyrimesh	
	71,896,707								
<i>pa hedhur</i>	<i>#REF!</i>	2	5	7	6=5+7	9=(2-5)			
Janar	72,594,758	6,710,114	11,908	6,000,155	6,012,063	6,698,206	-	698,051	0
Shkurt	72,200,340	5,819,929	4,371,736	1,842,611	6,214,348	1,448,193	-	394,418	0
Mars	71,887,840	5,496,920	5,066,376	743,045	5,809,420	430,545	-	312,500	0
Prill	71,416,559	5,155,722	5,183,086	443,917	5,627,003	27,364	-	471,281	0
Maj	71,210,144	5,075,626	4,909,283	372,758	5,282,041	166,343	-	206,415	0
Qershor	71,763,430	5,324,553	4,464,984	306,283	4,771,267	859,569	-	553,286	0
Korrik	71,886,698	5,684,531	5,061,596	499,667	5,561,263	622,935	-	123,268	0
Gusht	72,343,496	6,100,924	5,315,417	328,709	5,644,126	785,507	-	456,798	0
Shtator	71,822,038	5,207,417	5,446,625	282,250	5,728,875	239,208	-	521,458	0
Tetor	71,361,843	4,992,973	5,051,814	401,354	5,394,327	58,841	-	460,195	0

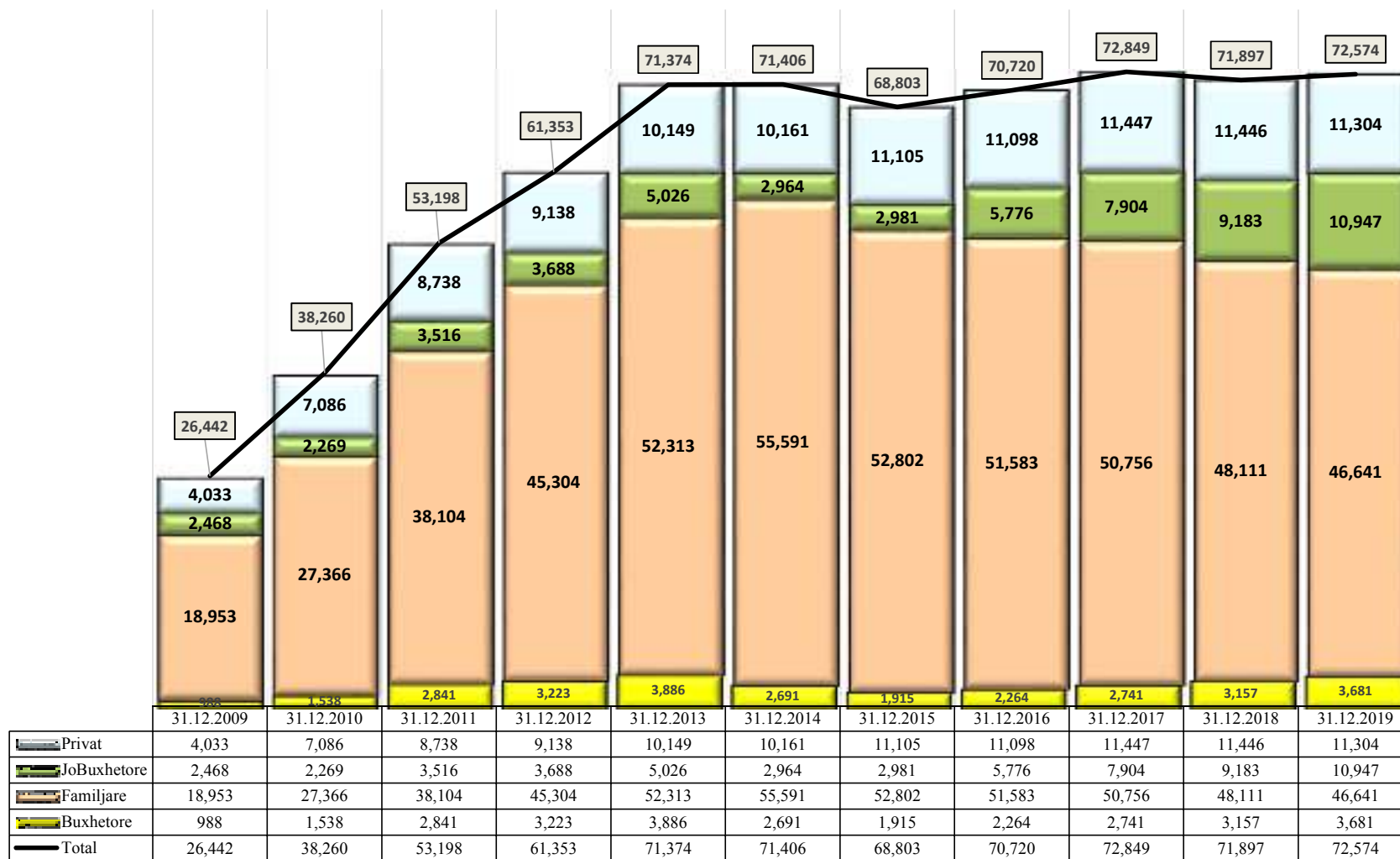
ECURIA E GJENDJES DEBITORE NDAJ OSHEE 31 DHJETOR 2009 - 31 Dhjetor 2019 (000 000 LEKË)

	31.12.2009	31.12.2010	31.12.2011	31.12.2012	31.12.2013	31.12.2014	31.12.2015	31.12.2016	31.12.2017	31.12.2018	31.12.2019
Buxhetore	988	1,538	2,841	3,223	3,886	2,691	1,915	2,264	2,741	3,157	3,681
Familjare	18,953	27,366	38,104	45,304	52,313	55,591	52,802	51,583	50,756	48,111	46,641
JoBuxhetore	2,468	2,269	3,516	3,688	5,026	2,964	2,981	5,776	7,904	9,183	10,947
Privat	4,033	7,086	8,738	9,138	10,149	10,161	11,105	11,098	11,447	11,446	11,304
Total	26,442	38,260	53,198	61,353	71,374	71,406	68,803	70,720	72,849	71,897	72,574

**ECURIA E GJENDJES DEBITORE NDAJ OPERATORIT TE SHPERNDARJES
31 DHJETOR 2009 - 31 DHJETOR 2019 SIPAS KLIENTËVE
(000 000 LEKË)**



ECURIA E GJENDJES DEBITORE NDAJ OPERATORIT TE SHPERNDARJES
31 DHJETOR 2009 - 31 DHJETOR 2019
(000 000 LEKË)



PERFORMANCA E OPERATOTRIT TE SHPERNDARJES 2009-2019 (%)

NIVELI I HUMBJEVE (%) 2009-2019												
	Janar	Shkurt	Mars	Prill	Maj	Qershor	Korrik	Gusht	Shtator	Tetor	Nentor	Dhjetor
2009	40.75	37.05	38.05	32.93	33.44	30.75	32.60	30.20	25.34	30.67	33.44	36.89
2010	38.62	35.41	36.90	31.37	35.17	31.45	26.94	29.69	21.47	20.61	22.16	29.05
2011	55.55	38.00	36.95	23.11	24.85	21.29	21.88	19.41	22.95	25.15	32.20	35.70
2012	35.72	59.16	55.23	45.41	38.87	39.77	45.51	45.51	42.09	35.53	41.89	49.32
2013	51.12	48.71	48.29	39.66	39.52	40.33	43.33	38.50	35.08	45.98	48.08	53.04
2014	47.00	42.14	42.78	35.69	36.85	34.10	36.59	36.36	31.67	34.52	32.88	37.54
2015	36.68	31.82	32.88	30.54	31.24	28.60	30.62	29.29	25.30	29.92	30.82	34.50
2016	34.69	29.00	29.93	26.07	26.97	24.35	25.97	25.15	22.12	27.11	29.30	30.99
2017	33.50	27.63	28.66	25.81	25.88	28.31	24.69	23.29	19.79	23.76	23.55	27.90
2018	30.65	24.91	27.22	23.33	23.03	20.76	21.46	20.77	19.32	21.53	22.73	26.70
2019	29.25	23.21	26.5	21.36	22.10	19.92	20.42	19.81	17.54	20.40	21.58	24.76

26.41
23.9
21.79

Niveli i Arketimeve (%) 2009-2019												
	Janar	Shkurt	Mars	Prill	Maj	Qershor	Korrik	Gusht	Shtator	Tetor	Nentor	Dhjetor
2009	69.32	85.95	74.38	86.58	86.31	76.37	75.40	72.46	83.20	80.82	61.77	70.01
2010	55.37	66.28	86.63	89.46	86.70	79.42	74.84	124.98	84.20	70.81	56.15	66.48
2011	67.26	57.61	87.66	71.61	96.73	73.00	65.00	81.00	66.00	63.86	51.47	87.30
2012	59.80	79.20	78.50	78.00	94.70	83.50	91.60	102.90	74.00	98.00	72.60	78.00
2013	61.40	63.70	86.20	80.70	79.10	69.60	87.90	90.10	78.50	84.30	89.00	102.00
2014	84.90	77.10	85.90	85.50	81.90	80.20	86.70	83.60	102.60	101.00	101.90	141.00
2015	112.70	120.50	103.70	86.60	95.70	97.10	98.40	104.70	95.30	100.30	92.20	100.70
2016	92.10	87.00	95.60	90.10	99.10	92.00	94.20	96.70	91.50	96.70	90.30	96.70
2017	85.20	87.60	105.70	94.50	105.70	91.80	104.80	97.40	94.60	103.80	92.70	100.10
2018	96.39	95.69	105.82	98.92	111.64	100.16	105.00	102.12	93.03	108.76	96.24	108.94
2019	90.7	92.6	99.8	102.4	102.50	94.00	104.40	99.30	93.90	104.70	89.60	110.70

96.6
101.6
98.4

Efektiviteti i shitjeve (%) 2009-2019												
	Janar	Shkurt	Mars	Prill	Maj	Qershor	Korrik	Gusht	Shtator	Tetor	Nentor	Dhjetor
2009	41.1%	54.1%	46.1%	58.1%	57.4%	52.9%	50.8%	50.6%	62.1%	56.0%	41.1%	44.2%
2010	34.0%	42.8%	54.7%	61.4%	56.2%	54.4%	54.7%	87.9%	66.1%	56.2%	43.7%	47.2%
2011	29.9%	35.7%	55.3%	55.1%	72.7%	57.5%	50.8%	65.3%	50.9%	47.8%	34.9%	56.1%
2012	38.4%	32.3%	35.1%	42.6%	57.9%	50.3%	49.9%	56.1%	42.9%	63.2%	42.2%	39.5%
2013	30.0%	32.7%	44.6%	48.7%	47.8%	41.5%	49.8%	55.4%	51.0%	45.5%	46.2%	47.9%
2014	45.0%	44.6%	49.2%	55.0%	51.7%	52.9%	55.0%	53.2%	70.1%	66.1%	68.4%	88.1%
2015	71.4%	82.2%	69.6%	60.2%	65.8%	69.3%	68.3%	74.0%	71.2%	70.3%	63.8%	66.0%
2016	60.2%	61.8%	67.0%	66.6%	72.4%	69.6%	69.7%	72.4%	71.3%	70.5%	63.8%	66.7%
2017	56.7%	63.4%	75.4%	70.1%	78.3%	65.8%	78.9%	74.7%	75.9%	79.1%	70.9%	72.2%
2018	66.8%	71.9%	77.0%	75.8%	85.9%	79.4%	82.5%	80.9%	75.1%	85.3%	74.4%	79.9%
2019	64.2%	71.1%	73.4%	80.5%	79.8%	75.3%	83.1%	79.6%	77.4%	83.3%	70.3%	83.3%

71.1%
77.3%
77.0%

	2009	2010	2011	2012	2013	2014	2015	2016	2017	2018	2019
Arketimi	76.4	70.1	70.7	83.0	79.3	91.9	100.8	93.4	96.6	101.6	98.4
Humbja	34.0	30.4	37.6	46.4	45.0	37.8	31.3	28.0	26.4	23.9	21.8
Efektiviteti	50.4	48.8	44.1	44.5	43.6	57.2	69.2	67.2	71.1	77.3	77.0

Efektiviteti i shitjeve ne Sistemin e Shperndarjes (%)
2009-2019



	2009	2010	2011	2012	2013	2014	2015	2016	2017	2018	2019
Arketimi	76.4	70.1	70.7	83.0	79.3	91.9	100.8	93.4	96.6	101.6	98.4
Humbja	34.0	30.4	37.6	46.4	45.0	37.8	31.3	28.0	26.4	23.9	21.8
Efektiviteti	50.4	48.8	44.1	44.5	43.6	57.2	69.2	67.2	71.1	77.3	77.0

Arketimi Humbja Efektiviteti

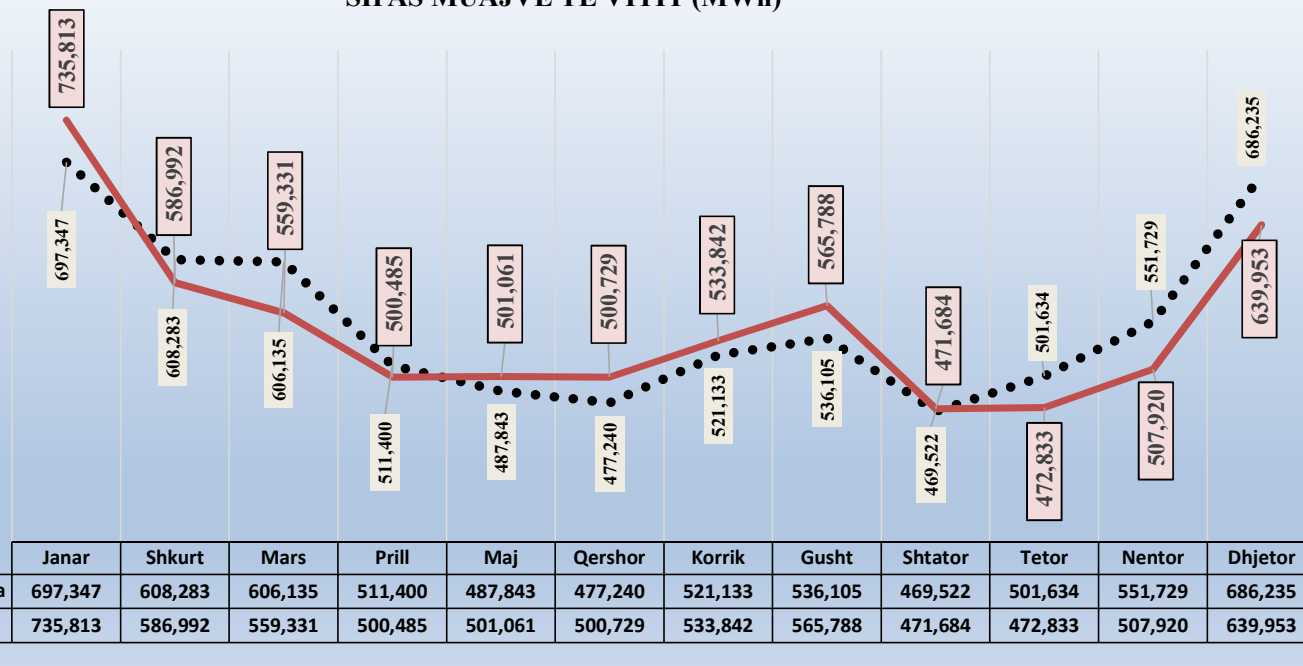
Energji Totale ne Operatorin e Sistemit te Shperndarjes 2009-2019 ne MWh

	Janar	Shkurt	Mars	Prill	Maj	Qershor	Korrik	Gusht	Shtator	Tetor	Nentor	Dhjetor	VITI
2009	644,987	568,719	589,279	462,709	448,118	427,694	467,863	493,772	439,604	489,635	557,554	639,797	6,229,731
2010	675,343	608,940	610,583	506,275	476,500	464,120	499,241	512,024	460,893	509,793	532,126	660,665	6,516,503
2011	708,264	623,208	634,087	536,286	533,564	495,139	545,315	567,282	512,979	551,132	619,655	710,870	7,037,781
2012	733,973	680,054	596,982	537,950	483,891	489,723	536,891	540,566	469,527	484,706	548,289	749,398	6,851,949
2013	743,846	665,392	673,578	545,600	502,945	511,390	546,696	565,789	493,056	532,555	589,808	774,403	7,145,060
2014	733,468	631,678	645,837	578,948	541,016	501,088	530,554	556,098	492,427	537,280	546,419	640,431	6,935,244
2015	686,041	591,978	594,775	514,282	472,405	465,730	536,160	529,208	459,012	476,969	519,281	649,026	6,494,867
2016	671,884	559,772	573,419	469,803	477,468	463,248	509,916	514,034	451,153	480,236	540,024	688,760	6,399,717
2017	715,886	562,270	545,214	493,731	475,055	485,386	529,805	543,145	451,103	482,629	546,256	667,841	6,498,322
2018	659,778	590,823	597,595	468,417	467,468	468,885	508,892	539,134	465,468	471,407	517,882	681,162	6,436,911
2019	735,813	586,992	559,331	500,485	501,061	500,729	533,842	565,788	471,684	472,833	507,920	639,953	6,576,432

	Janar	Shkurt	Mars	Prill	Maj	Qershor	Korrik	Gusht	Shtator	Tetor	Nentor	Dhjetor
Mesatarja	697,347	608,283	606,135	511,400	487,843	477,240	521,133	536,105	469,522	501,634	551,729	686,235
2019	735,813	586,992	559,331	500,485	501,061	500,729	533,842	565,788	471,684	472,833	507,920	639,953
Diferenca	38,466	(21,291)	(46,804)	(10,915)	13,218	23,489	12,709	29,682	2,162	(28,801)	(43,809)	(46,282)

Burimi OSHEE sha

**MESATARJA 10 VJEÇARE E ENERGJISË TOTALE NË RRJETIN E SHPËRNDARJES
SIPAS MUAJVE TË VITIT (MWh)**



KLIENTET NE TENSION TE LARTE (KUALIFIKUAR) PER VITIN 2019 (MWh)

NR	KLIENTET	Janar	Shkurt	Mars	Prill	Maj	Qershor	Korrik	Gusht	Shtator	Tetor	Nentor	Dhjetor	Totali
1	N/ST i GSA EL i ri 110kV -T1/055	7,916	7,921	8,545	8,440	8,918	8,557	8,971	8,933	5,756	135	145	121	74,358
2	N/ST i GSA EL 110kV-T2/960	0	0	0	0	0	0	0	0	0	0	0	0	0
3	TEC Ballsh	2,953	4,485	5,134	4,869	2,186	4,738	3,186	5,818	2,490	68	70	77	36,075
4	ANTEA CEMENT	2,611	8,580	9,665	9,280	6,241	9,134	6,808	9,384	9,094	6,213	8,073	9,337	94,420
5	FERROKROM	6,616	9,596	11,331	12,501	12,925	9,096	6,777	6,503	6,682	6,678	6,644	6,982	102,330
6	FUSHE KRUJE CEMENT FACTORY	8,347	1,445	7,823	11,883	12,185	9,716	12,631	11,821	11,601	13,426	10,213	8,896	119,986
7	COLACEM ALBANIA	410	845	1,311	893	1,039	854	1,184	716	946	1,234	826	832	11,089
8	KURUM INTERNATIONAL	1,140	1,212	32,607	33,380	29,800	33,200	34,174	30,358	27,986	16,572	21,592	30,810	292,830
9	FUSHE ARRES Beralb	36	39	671	248	519	113	433	846	1,279	1,313	1,344	1,350	8,192
10	N/ST i AES EL 110kV-T1/690	3,861	5,751	7,010	6,885	6,775	7,206	5,119	3,685	3,282	6,781	5,649	3,708	65,711
11	N/ST i AES EL 110kV-T2/692	3,073	6,347	7,268	6,915	7,460	6,697	5,339	3,691	3,288	368	1,362	3,713	55,522
12	ENERGJI ASHTA	0	0.14	0	0	0	0	0	0	0	0	0	0	2
13	ENERGJI PESHQESH (AYEN) Konsum	26	7	24	16	0	13	33	35	41	35	16	4	251
14	ENERGJI FANG (AYEN) Konsum	37	20	34	31	14	29	27	27	35	34	41	46	376
15	ENERGJI BANJA (DEVOLL HPP) Konsum	20	10	17	11	11	12	24	30	28	23	21	19	227
16	DEVOLLIHPP	887	729	541	426	410	346	400	357	313	333	425	373	5,539
17	Gjenerim Kurum	1		18	7	4	3	41	17	15	12	2	0	121
	Totali mujor	37,932	46,989	91,997	95,784	88,488	89,715	85,145	82,221	72,836	53,227	56,423	66,268	867,029

Devijimet ne Programin e Interkoneksionit 2019 (MWh)

Minus = Hyrje

Plus = Dalje

Data	Janar	Shkurt	Mars	Prill	Maj	Qershor	Korrik	Gusht	Shtator	Tetor	Nentor	Dhjetor	
1	-19	-39	-38	-73	34	-162	-99	-25	36	49	-82	-75	-493
2	31	165	-86	22	27	-325	-92	27	62	4	-39	-117	-322
3	-122	650	-138	-30	-26	-138	-113	-50	31	32	-53	-163	-121
4	-220	765	-23	-36	-43	-101	-121	47	-24	-3	47	27	313
5	-185	52	35	-56	187	-71	-91	-3	15	20	-44	-27	-169
6	-213	21	80	4	-227	-45	-102	-71	38	-44	-164	-18	-741
7	-165	-44	-34	-6	-38	-80	-257	-18	14	-38	-1	2	-665
8	-153	-9	93	-70	375	-52	-81	-3	20	-21	-46	-56	-2
9	-281	23	79	-6	134	-225	-132	-28	50	-23	-80	199	-288
10	-261	-109	290	-5	-154	-74	-133	-59	-53	12	-63	-18	-628
11	-253	-24	-6	154	-128	-119	-90	-63	-52	19	-27	-37	-625
12	-221	69	-88	454	-293	-88	-15	-15	76	22	-171	0	-271
13	-245	-122	-134	389	-112	-63	23	-2	62	-26	-17	-39	-288
14	-218	-89	-148	639	-86	-65	39	-18	14	57	103	-24	204
15	-163	37	-308	320	-71	-66	56	-5	-19	57	-91	23	-229
16	-141	31	-108	200	-52	-242	28	8	1	-1	-96	-36	-408
17	-113	-56	-184	170	-46	-106	38	-2	33	6	-77	-25	-362
18	-166	-15	-28	203	964	-85	13	11	-33	-9	-117	-4	735
19	-15	32	2	171	1,063	-119	24	-22	-35	-18	-102	-31	950
20	-27	49	-1	325	548	-153	20	-18	-13	-68	-12	1	651
21	22	67	23	540	542	-138	21	4	-15	-4	-18	-6	1,036
22	-55	21	206	198	458	-93	19	20	14	-16	-46	-3	723
23	27	569	293	-2	-82	-267	-3	27	35	-44	-71	13	496
24	37	57	125	7	-128	-86	3	-21	34	-45	-86	-23	-124
25	120	16	217	-11	-157	-88	18	-30	-28	-16	-81	11	-29
26	83	64	83	98	-249	-75	11	-33	-10	-16	-10	7	-48
27	4	-64	-42	54	-92	-119	-18	8	58	-91	-122	-36	-461
28	70	18	-28	105	-103	-112	-38	8	30	-34	-108	-40	-232
29	306	0	-45	88	-164	-87	-20	50	49	-51	-35	-69	22
30	249	0	-1	74	-331	-234	19	14	9	-57	-135	-10	-403
31	180	0	-53	0	-145	0	-9	22	0	-75	0	-8	-88
Total	-2,106	2,136	32	3,919	1,606	-3,678	-1,080	-240	397	-423	-1,845	-583	-1,866

Burimi OST sha

Tabela me te dhenat e Alkimit te ATC 2019

Ankandit	Peridhja	Shqipëri - Mali D						Shqipëri - Grup						Shqipëri - Rerove							
		ATC e ofruar ne Ankandit		ATC e shkur ne Ankandit		Cnimt Ankandit		ATC e ofruar ne Ankandit		ATC e shkur ne Ankandit		Cnimt Ankandit		ATC e ofruar ne Ankandit		ATC e shkur ne Ankandit		Cnimt Ankandit			
		Export	Import	Export	Import	Export	Import	Export	Import	Export	Import	Export	Import	Export	Import	Export	Import	Export	Import	Export	Import
[MWh]	[MWh]	[MWh]	[MWh]	[Euro/MWh]	[Euro/MWh]	[MWh]	[MWh]	[MWh]	[MWh]	[Euro/MWh]	[Euro/MWh]	[MWh]	[MWh]	[Euro/MWh]	[Euro/MWh]	[MWh]	[MWh]	[Euro/MWh]	[Euro/MWh]	[MWh]	[MWh]
Inuar	1.01.2019-31.01.2019	100.5	125	100.5	125	0.12	0.04	50	50.5	50	50.5	0.05	0.11	125	125	125	125	0.12	0.04		
Shkurt	1.02.2019-28.02.2019	100.5	125	90.5	125	0.11	1.7	50	50.5	50	50.5	4.07	1.76	125	125	125	125	0.11	1.7		
	1.03.2019-31.03.2019													100	100	100	100	0.21	0.13		
	1.04.2019-30.04.2019													75	75	75	75	0.35	0.75		
Mars	22.05.2019-31.05.2019													100	100	100	100	0.25	0.14		
	1.06.2019-30.06.2019	100.5	125	100.5	124.5	0.28	0.25	50	50.5	50	50.5	10	0.25								
	1.07.2019-31.07.2019	73.5	100	73.5	100	0.23	0.25														
	1.08.2019-31.08.2019	100.5	125	100.5	124.5	0.28	0.25														
	1.09.2019-30.09.2019	73.5	25	73.5	15	0.23	0.25														
	22.09.2019-30.09.2019	100.5	125	100.5	124.5	0.28	0.25							100	100	100	100	0.33	2.32		
	1.10.2019-31.10.2019													100	100	100	100	0.33	2.32		
Prill	26.03.04.2019													100	100	100	100	0.33	2.32		
	1.04.2019-31.03.2019	100.5	125	100.5	125	0.12	2.1	50	50.5	50	50.5	0	0.33								
	1.05.2019-31.05.2019	100.5	125	100.5	125	0.11	2.11	50	50.5	50	50.5	0.39	0.42	100	100	100	100	0.11	2.27		
Maj	1.06.2019-31.05.2019	100.5	125	90	125	0.12	2.80														
Qershor	1.06.2019-30.06.2019	100.5	125	90	125	0.12	2.80	50	50.5	50	50.5	13.67	0.26	100	100	100	100	0.3	1.6		
Korrik	1.07.2019-31.07.2019	0.5	100	0.5	100	0.08	0.35	50	50.5	50	50.5	14.5	0.57	100	100	100	100	0.08	2.33		
Gusht	1.08.2019-31.08.2019	100.5	125	100.5	125	0.08	1.75	50	50.5	50	50.5	8.01	0.17	100	100	100	100	0.09	1.1		
	1.09.2019-30.09.2019													100	100	100	100	0.06	1.52		
	1.10.2019-31.10.2019													100	100	100	100	0.15	2.62		
	20.09.2019-24.09.2019							50	50.5	50	50.5	6.54	0.43	100	100	100	100	0.07	2.89		
	27.09.2019-30.09.2019													75	100	75	100	0.1	2.09		
	01.10.2019-16.10.2019	100.5	125	100.5	125	0.05	1.06														
	17.10.2019-30.10.2019	100.5	25	100.5	25	0.08	0.11														
	01.11.2019-15.11.2019							50	50.5	50	50.5	1.01	1.51	411	171	411	171	0.08	1.17		
	22.10.2019-26.10.2019							0	0	0	0	1.01	1.51	411	21	411	21	0.08	1.17		
	01.11.2019-15.11.2019							0	0	0	0	1.01	1.51	411	171	411	171	0.08	1.17		
	16.11.2019-15.11.2019	100.5	105	100.5	105	0.08	1.07														
	16.11.2019-15.11.2019	73.5	90	73.5	90	0.05	1.04	50	101	50	101	1.01	0.47	421	421	421	421	0.14	1.07		
	16.11.2019-15.11.2019	100.5	100	100.5	100	0.08	1.04														
	01.12.2019-15.12.2019							0	0	0	0	1.01	1.51	421	421	421	421	0.14	1.07		
	16.12.2019-15.12.2019	100.5	105	100.5	105	0.21	1.18														
	16.12.2019-15.12.2019							0	0	0	0	1.01	1.51	421	421	421	421	0.14	1.07		
	16.12.2019-15.12.2019							0	0	0	0	1.01	1.51	421	421	421	421	0.14	1.07		

Pale Pergjegjese Balancuse	JANAR		SHKURT		MARS		PRILL		MAJ		QESHOR		KORRIK		GUSHT		SHTATOR		TETOR		NETOR		DHJETOR		TOTALI 2019						
	Dis. Negative [MWh]	Dis. Positive [MWh]	Dis. Negative [MWh]	Dis. Positive [MWh]	Dis. Negative [MWh]	Dis. Positive [MWh]	Dis. Negative [MWh]	Dis. Positive [MWh]	Dis. Negative [MWh]	Dis. Positive [MWh]	Dis. Negative [MWh]	Dis. Positive [MWh]	Dis. Negative [MWh]	Dis. Positive [MWh]	Dis. Negative [MWh]	Dis. Positive [MWh]	Dis. Negative [MWh]	Dis. Positive [MWh]	Dis. Negative [MWh]	Dis. Positive [MWh]	Dis. Negative [MWh]	Dis. Positive [MWh]	Dis. Negative [MWh]	Dis. Positive [MWh]	Dis. Negative [MWh]	Dis. Positive [MWh]	Dis. Negative [MWh]	Dis. Positive [MWh]			
KURUM	256.49	116.39	191.89	103.90	1,235.65	2,043.53	1,456.41	1,280.45	1,063.66	1,463.38	1,428.15	1,309.26	1,609.60	1,021.00	1,419.08	1,120.64	1,358.77	882.73	752.05	585.64	1,226.61	547.86	818.82	1,797.99	12,817.18	12,272.77					
DEVOLL	81.82	16.93	12.06	31.84	14.06	21.75	12.01	25.89	26.14	53.86	18.04	37.27	18.85	4.77	26.97	2.58	14.69	3.46	22.12	6.90	12.12	2.58	11.51	44.21	270.38	252.05					
ENERGIA GAS & POWER									2.43	111.64	-	275.33	10.43	187.92	24.62	182.66	128.22	170.47	209.99	63.05	333.42	14.41	428.02	3.52	1,137.13	1,009.01					
AYEN ENERGY TRADING	261.57	66.36	173.07	275.42	364.99	206.33																				799.63	548.11				
AYEN AS ENERGJI	1,645.35	246.94	1,115.62	147.80	2,054.23	77.74	829.87	340.46	593.42	237.82	572.91	274.42	120.32	95.11	147.55	152.12	303.00	25.62	263.89	29.20	263.59	244.20	127.79	174.17	8,037.55	2,045.59					
GSA	560.60	1,572.85	205.38	364.50	612.82	1,222.74	1,215.75	848.37	581.07	1,767.38	1,381.29	1,151.47	962.99	871.15	921.14	946.43	3,435.92	1,604.00	199.63	1,017.31	299.15	1,496.77	436.25	1,615.50	10,812.00	14,478.47					
GEN-I					4.00		20.00		184.19	266.12	167.02	542.96	402.02	302.30	257.90	259.49	293.63	521.69	420.67	264.28	218.62	420.53	199.81	279.65	2,167.86	2,857.01					
DANSKE									9.00																	-	9.00				
AES	414.33	742.72	2,168.51	247.14	2,601.23	179.05	1,601.18	95.09	1,173.02	85.08	1,488.37	82.26	951.08	142.32	649.58	271.71	1,222.33	148.78	1,114.38	218.26	1,155.55	71.00	1,386.26	29.03	15,925.82	2,312.45					
ASHFA	832.62	922.17	869.77	698.55	1,029.08	714.82	990.81	680.03	836.89	666.22	630.38	632.31	516.93	425.07	561.59	514.43	636.80	510.47	614.61	593.49	1,362.43	738.26	941.53	861.65	9,814.43	7,937.46					
OSHEE	38,535.10	16,192.98	4,436.50	28,991.15	11,445.23	20,548.92	4,085.02	22,661.33	2,838.19	27,149.12	8,862.93	10,707.10	9,037.88	12,833.41	4,999.67	10,761.87	5,874.30	14,046.48	5,625.68	5,889.53	4,750.79	28,131.24	7,180.10	24,405.56	107,371.39	222,316.70					
NOA	165.00	-																		4.00	-					169.00	-				
KESH (Pale Pergjegjese Balancuse)	202.12	8.47	8.28	95.11	14.21	250.81	-	192.79	4.30	83.94	3.38	99.51	32.12	18.68	23.75	27.81	15.88	44.13	0.68	110.15	-	208.66	25.15	51.52	329.88	1,191.59					
KASTRATI												21.99	68.80	78.08	28.51	91.95	23.65	211.63	71.74	219.90	54.72	179.18	33.59	265.32	56.67	1,068.04	337.67				
OST - HUMBJET ne Transmetim	3,319.19	422.56	1,873.21	1,016.53	1,955.52	945.78	2,773.51	273.71	5,785.90	27.93	3,046.64	257.77	1,226.25	651.67	1,409.56	289.17	246.94	1,954.17	45.57	2,153.30	2,642.11	382.45	7,945.81	8.33	32,270.23	8,383.35					
Ofruesi i Sherbimit te Balancimit	Ulje Gjenerimi [MWh]	Rritje Gjenerimi [MWh]	Ulje Gjenerimi [MWh]	Rritje Gjenerimi [MWh]	Ulje Gjenerimi [MWh]	Rritje Gjenerimi [MWh]	Ulje Gjenerimi [MWh]	Rritje Gjenerimi [MWh]	Ulje Gjenerimi [MWh]	Rritje Gjenerimi [MWh]	Ulje Gjenerimi [MWh]	Rritje Gjenerimi [MWh]	Ulje Gjenerimi [MWh]	Rritje Gjenerimi [MWh]	Ulje Gjenerimi [MWh]	Rritje Gjenerimi [MWh]	Ulje Gjenerimi [MWh]	Rritje Gjenerimi [MWh]	Ulje Gjenerimi [MWh]	Rritje Gjenerimi [MWh]	Ulje Gjenerimi [MWh]	Rritje Gjenerimi [MWh]	Ulje Gjenerimi [MWh]	Rritje Gjenerimi [MWh]	Ulje Gjenerimi [MWh]	Rritje Gjenerimi [MWh]	Ulje Gjenerimi [MWh]	Rritje Gjenerimi [MWh]	Ulje Gjenerimi [MWh]	Rritje Gjenerimi [MWh]	
KESH	14,113	38,062	23,688	4,735	16,591	11,129	15,341	5,536	20,824	3,418	10,453	8,959	12,643	9,855	9,969	5,662	13,153	7,182	7,064	5,192	27,395	5,152	19,978	9,832	191,211	114,714					
TOTALI	60,387	58,370	34,742	36,707	37,613	37,340	28,326	31,914	33,913	35,339	28,074	24,397	27,609	26,437	20,502	20,215	26,896	27,166	16,553	16,177	39,842	37,443	39,744	39,158	394,202	390,665					
Disbalancat mujore [MWh]	2,017		(1,965)		273		(3,588)		(1,426)		3,676		1,172		287		(270)		376						(2,399)		(586)				

Blerjet e OSHEE s.h.a të energjisë elektrike në tregun e hapur për vitin 201!

OSHEE s.h.a.							
Muaji	Kompanitë fituese	Periodha	Intervali i lëvrimit	Sasia (MWh)	Çmimi Euro/MWh	Vlera pa TVSH (Euro)	
JANAR	EFT AG	01.01.2019 31.01.2019	00.00-24.00 (24 ORE)	74,400	84.82	6,310,608	
		01.01.2019 10.01.2019	00.00-24.00 (24 ORE)	10,800	74.88	808,704	
		01.01.2019 10.01.2019	07.00-23.00 (16 ORE)	24,000	85.22	2,045,280	
		11.01.2019 17.01.2019	00.00-24.00 (24 ORE)	10,584	90.74	960,392	
		11.01.2019 17.01.2019	08.00-23.00 (15 ORE)	6,825	104.37	712,325	
		18.01.2019 24.01.2019	00.00-24.00 (24 ORE)	7,392	96.00	709,632	
		18.01.2019 24.01.2019	07.00-23.00 (16 ORE)	112	106.00	11,872	
		18.01.2019 24.01.2019	07.00-23.00 (16 ORE)	6160	113.85	701,316	
		01.01.2019 31.01.2019	00.00-24.00 (24 ORE)	37,200	83.94	3,122,568	
		01.01.2019 10.01.2019	07.00-23.00 (16 ORE)	2,880	92.29	265,795	
		11.01.2019 17.01.2019	08.00-23.00 (15 ORE)	17,325	103.57	1,794,350	
		18.01.2019 24.01.2019	07.00-23.00 (16 ORE)	9,968	114.77	1,144,027	
		01.01.2019 31.01.2019	00.00-24.00 (24 ORE)	7,440	82.35	612,684	
		01.01.2019 10.01.2019	07.00-24.00 (16 ORE)	8,000	89.47	715,760	
		NETWORK FOR TRADING	11.01.2019 17.01.2019	00.00-24.00 (24 ORE)	1,680	88.47	148,630
	11.01.2019 17.01.2019		08.00-23.00 (15 ORE)	8,400	103.48	869,232	
	01.01.2019 31.01.2019		00.00-24.00 (24 ORE)	3,720	79.85	297,042	
	01.01.2019 10.01.2019		07.00-24.00 (16 ORE)	1,600	91.38	146,208	
	11.01.2019 17.01.2019		08.00-23.00 (15 ORE)	1,575	103.34	162,761	
	18.01.2019 24.01.2019		00.00-24.00 (24 ORE)	168	95.95	16,120	
	25.01.2019 31.01.2019		00.00-24.00 (24 ORE)	4,200	84.73	355,866	
	01.01.2019 31.01.2019		00.00-24.00 (24 ORE)	34,224	80.70	2,761,877	
	01.01.2019 10.01.2019		07.00-24.00 (16 ORE)	1,920	87.60	168,192	
	11.01.2019 17.01.2019		00.00-24.00 (24 ORE)	6,720	86.50	581,296	
	11.01.2019 17.01.2019		08.00-23.00 (15 ORE)	6,300	104.49	658,287	
	18.01.2019 24.01.2019		00.00-24.00 (24 ORE)	840	92.75	77,910	
	18.01.2019 24.01.2019		07.00-23.00 (16 ORE)	6,720	113.90	765,408	
	01.01.2019 31.01.2019		00.00-24.00 (24 ORE)	2,232	84.92	189,541	
	HSE D.O.O LJUBJANA		01.01.2019 10.01.2019	00.00-24.00 (24 ORE)	1,200	69.50	83,400
		01.01.2019 10.01.2019	07.00-24.00 (16 ORE)	800	85.26	68,208	
		11.01.2019 17.01.2019	08.00-23.00 (15 ORE)	525	103.98	54,590	
		01.01.2019 31.01.2019	00.00-24.00 (24 ORE)	22,320	82.55	1,842,516	
		01.01.2019 10.01.2019	07.00-24.00 (16 ORE)	14,400	88.69	1,271,136	
		11.01.2019 17.01.2019	00.00-24.00 (24 ORE)	168	84.09	14,127	
		11.01.2019 17.01.2019	08.00-23.00 (15 ORE)	9,450	104.25	985,163	
		18.01.2019 24.01.2019	07.00-23.00 (16 ORE)	10,080	113.75	1,146,600	
		25.01.2019 31.01.2019	00.00-24.00 (24 ORE)	9,240	87.80	811,272	
		01.01.2019 31.01.2019	00.00-24.00 (24 ORE)	744	82.99	61,745	
		01.01.2019 10.01.2019	07.00-24.00 (16 ORE)	1,600	91.13	145,808	
		11.01.2019 17.01.2019	00.00-24.00 (24 ORE)	168	83.99	14,110	
		11.01.2019 17.01.2019	08.00-24.00 (15 ORE)	525	103.99	54,595	
		01.01.2019 31.01.2019	00.00-24.00 (24 ORE)	3,720	82.45	306,714	
		NOA ENERGY TRADE	01.01.2019 10.01.2019	07.00-24.00 (16 ORE)	4,000	88.50	354,000
	11.01.2019 17.01.2019		08.00-23.00 (15 ORE)	525	104.50	54,863	
	11.01.2019 17.01.2019		00.00-24.00 (24 ORE)	840	82.25	69,090	
11.01.2019 17.01.2019	08.00-23.00 (15 ORE)		1,050	98.75	103,688		
25.01.2019 31.01.2019	00.00-24.00 (24 ORE)		3,360	87.77	294,907		
18.01.2019 24.01.2019	07.00-23.00 (16 ORE)		560	111.68	62,541		
URADRIN	01.01.2019 10.01.2019		00.00-24.00 (24 ORE)	1,200	69.50	83,400	
	01.01.2019 10.01.2019		07.00-24.00 (16 ORE)	800	85.26	68,208	
	11.01.2019 17.01.2019		08.00-23.00 (15 ORE)	525	103.98	54,590	
	01.01.2019 31.01.2019		00.00-24.00 (24 ORE)	22,320	82.55	1,842,516	
	01.01.2019 10.01.2019		07.00-24.00 (16 ORE)	14,400	88.69	1,271,136	
	11.01.2019 17.01.2019		00.00-24.00 (24 ORE)	168	84.09	14,127	
	11.01.2019 17.01.2019		08.00-23.00 (15 ORE)	9,450	104.25	985,163	
	18.01.2019 24.01.2019		07.00-23.00 (16 ORE)	10,080	113.75	1,146,600	
	25.01.2019 31.01.2019		00.00-24.00 (24 ORE)	9,240	87.80	811,272	
	01.01.2019 31.01.2019	00.00-24.00 (24 ORE)	744	82.99	61,745		
	01.01.2019 10.01.2019	07.00-24.00 (16 ORE)	1,600	91.13	145,808		
	11.01.2019 17.01.2019	00.00-24.00 (24 ORE)	168	83.99	14,110		
	11.01.2019 17.01.2019	08.00-24.00 (15 ORE)	525	103.99	54,595		
	01.01.2019 31.01.2019	00.00-24.00 (24 ORE)	3,720	82.45	306,714		
	AYEN ENERGY TRADING	01.01.2019 10.01.2019	07.00-24.00 (16 ORE)	4,000	88.50	354,000	
11.01.2019 17.01.2019		08.00-23.00 (15 ORE)	525	104.50	54,863		
11.01.2019 17.01.2019		00.00-24.00 (24 ORE)	840	82.25	69,090		
11.01.2019 17.01.2019		08.00-23.00 (15 ORE)	1,050	98.75	103,688		
25.01.2019 31.01.2019		00.00-24.00 (24 ORE)	3,360	87.77	294,907		
18.01.2019 24.01.2019		07.00-23.00 (16 ORE)	560	111.68	62,541		
NOVA COMMODITIES		01.01.2019 10.01.2019	00.00-24.00 (24 ORE)	1,200	69.50	83,400	
		01.01.2019 10.01.2019	07.00-24.00 (16 ORE)	800	85.26	68,208	
		11.01.2019 17.01.2019	08.00-23.00 (15 ORE)	525	103.98	54,590	
		01.01.2019 31.01.2019	00.00-24.00 (24 ORE)	22,320	82.55	1,842,516	
		01.01.2019 10.01.2019	07.00-24.00 (16 ORE)	14,400	88.69	1,271,136	
		11.01.2019 17.01.2019	00.00-24.00 (24 ORE)	168	84.09	14,127	
		11.01.2019 17.01.2019	08.00-23.00 (15 ORE)	9,450	104.25	985,163	
		18.01.2019 24.01.2019	07.00-23.00 (16 ORE)	10,080	113.75	1,146,600	
		25.01.2019 31.01.2019	00.00-24.00 (24 ORE)	9,240	87.80	811,272	
	01.01.2019 31.01.2019	00.00-24.00 (24 ORE)	744	82.99	61,745		
	01.01.2019 10.01.2019	07.00-24.00 (16 ORE)	1,600	91.13	145,808		
	11.01.2019 17.01.2019	00.00-24.00 (24 ORE)	168	83.99	14,110		
	11.01.2019 17.01.2019	08.00-24.00 (15 ORE)	525	103.99	54,595		
	01.01.2019 31.01.2019	00.00-24.00 (24 ORE)	3,720	82.45	306,714		
	GRID ENERGY SHPK	01.01.2019 10.01.2019	07.00-24.00 (16 ORE)	4,000	88.50	354,000	
11.01.2019 17.01.2019		08.00-23.00 (15 ORE)	525	104.50	54,863		
11.01.2019 17.01.2019		00.00-24.00 (24 ORE)	840	82.25	69,090		
11.01.2019 17.01.2019		08.00-23.00 (15 ORE)	1,050	98.75	103,688		
25.01.2019 31.01.2019		00.00-24.00 (24 ORE)	3,360	87.77	294,907		
18.01.2019 24.01.2019		07.00-23.00 (16 ORE)	560	111.68	62,541		
DEVOLL HYDROPOWER SHA		01.01.2019 10.01.2019	00.00-24.00 (24 ORE)	1,200	69.50	83,400	
		01.01.2019 10.01.2019	07.00-24.00 (16 ORE)	800	85.26	68,208	
		11.01.2019 17.01.2019	08.00-23.00 (15 ORE)	525	103.98	54,590	
		01.01.2019 31.01.2019	00.00-24.00 (24 ORE)	22,320	82.55	1,842,516	
		01.01.2019 10.01.2019	07.00-24.00 (16 ORE)	14,400	88.69	1,271,136	
		11.01.2019 17.01.2019	00.00-24.00 (24 ORE)	168	84.09	14,127	
		11.01.2019 17.01.2019	08.00-23.00 (15 ORE)	9,450	104.25	985,163	
		18.01.2019 24.01.2019	07.00-23.00 (16 ORE)	10,080	113.75	1,146,600	
		25.01.2019 31.01.2019	00.00-24.00 (24 ORE)	9,240	87.80	811,272	
	01.01.2019 31.01.2019	00.00-24.00 (24 ORE)	744	82.99	61,745		
	01.01.2019 10.01.2019	07.00-24.00 (16 ORE)	1,600	91.13	145,808		
	11.01.2019 17.01.2019	00.00-24.00 (24 ORE)	168	83.99	14,110		
	11.01.2019 17.01.2019	08.00-24.00 (15 ORE)	525	103.99	54,595		
	01.01.2019 31.01.2019	00.00-24.00 (24 ORE)	3,720	82.45	306,714		
	RENGRY TRADING GROUP	01.01.2019 10.01.2019	07.00-24.00 (16 ORE)	4,000	88.50	354,000	
11.01.2019 17.01.2019		08.00-23.00 (15 ORE)	525	104.50	54,863		
11.01.2019 17.01.2019		00.00-24.00 (24 ORE)	840	82.25	69,090		
11.01.2019 17.01.2019		08.00-23.00 (15 ORE)	1,050	98.75	103,688		
25.01.2019 31.01.2019		00.00-24.00 (24 ORE)	3,360	87.77	294,907		
18.01.2019 24.01.2019		07.00-23.00 (16 ORE)	560	111.68	62,541		
Total JANAR 2019				388,660	89.84	34,918,738	
SHIKURT		DEVOLL HYDROPOWER SHA	15.02.2019 21.02.2019	00.00-24.00 (24 ORE)	4,200	64.41	270,522
		DEVOLL HYDROPOWER SHA	01.02.2019 07.02.2020	00.00-24.00 (24 ORE)	2,520	76.37	192,452
		RENGRY TRADING GROUP	15.02.2019 21.02.2019	00.00-24.00 (24 ORE)	5,880	64.46	379,025
		RENGRY TRADING GROUP	22.02.2019 28.02.2019	00.00-24.00 (24 ORE)	11,424	65.17	744,503
		RENGRY TRADING GROUP	01.02.2019 07.02.2020	00.00-24.00 (24 ORE)	3,360	75.75	254,520
		HISE D.O.O LJUBJANA	15.02.2019 21.02.2019	00.00-24.00 (24 ORE)	8,400	64.68	543,312
		HISE D.O.O LJUBJANA	22.02.2019 28.02.2019	00.00-24.00 (24 ORE)	10,080	64.78	652,982
		HISE D.O.O LJUBJANA	01.02.2019 07.02.2020	00.00-24.00 (24 ORE)	8,400	75.43	633,612
	URADRIN	15.02.2019 21.02.2019	00.00-24.00 (24 ORE)	1,176	64.40	75,734	
	URADRIN	22.02.2019 28.02.2019	00.00-24.00 (24 ORE)	1,176	63.99	75,252	
	NOA ENERGY TRADE	15.02.2019 21.02.2019	00.00-24.00 (24 ORE)	7,560	65.95	498,582	
	NOA ENERGY TRADE	22.02.2019 28.02.2019	00.00-24.00 (24 ORE)	3,360	65.35	219,576	
	NOA ENERGY TRADE	01.02.2019 07.02.2020	00.00-24.00 (24 ORE)	7,896	75.87	599,070	
	GSA SHPK	15.02.2019 21.02.2019	00.00-24.00 (24 ORE)	7,224	68.48	494,700	
	GSA SHPK	22.02.2019 28.02.2019	00.00-24.00 (24 ORE)	16,800	64.75	1,087,800	
	GSA SHPK	01.02.2019 07.02.2020	00.00-24.00 (24 ORE)	15,288	76.95	1,176,412	
	AYEN ENERGY TRADING	15.02.2019 21.02.2019	00.00-24.00 (24 ORE)	5,040	64.25	323,820	
	AYEN ENERGY TRADING	22.02.2019 28.02.2019	06.00-24.00 (18 ORE)	6,300	74.74	470,862	
	AYEN ENERGY TRADING	01.02.2019 07.02.2020	00.00-24.00 (24 ORE)	1,176	75.29	88,541	
	GRID ENERGY SHPK	15.02.2019 21.02.2019	00.00-24.00 (24 ORE)	5,040	64.70	326,088	
	NOVA COMMODITIES	15.02.2019 21.02.2019	00.00-24.00 (24 ORE)	840			

PRILL	DEVOLL HYDROPOWER SHA	26.04.2019	30.04.2019	07.00-23.00 (16 ORE)	2,000	67.87	135,740
	DEVOLL HYDROPOWER SHA	11.04.2019	22.04.2019	07.00-23.00 (16 ORE)	4,800	73.77	354,096
	EFT AG	01.04.2019	30.04.2019	00.00-24.00 (24 ORE)	100,800	55.50	5,594,400
	EFT AG	26.04.2019	30.04.2019	07.00-23.00 (16 ORE)	10,400	67.92	706,368
	EFT AG	11.04.2019	22.04.2019	07.00-23.00 (16 ORE)	3,840	74.87	287,501
	AYEN ENERGY TRADING	01.04.2019	10.04.2019	07.00-23.00 (16 ORE)	3,200	65.11	208,352
	AYEN ENERGY TRADING	11.04.2019	22.04.2019	07.00-23.00 (16 ORE)	3,840	74.01	284,198
	NOA ENERGY TRADE	01.04.2019	10.04.2019	07.00-23.00 (16 ORE)	10,400	66.37	690,248
	NOA ENERGY TRADE	11.04.2019	22.04.2019	00.00-24.00 (24 ORE)	17,280	59.99	1,036,627
	NOA ENERGY TRADE	11.04.2019	22.04.2019	07.00-23.00 (16 ORE)	12,480	71.97	898,186
	GSA SHPK	01.04.2019	10.04.2019	07.00-23.00 (16 ORE)	15,200	65.35	993,320
	GSA SHPK	26.04.2019	30.04.2019	07.00-23.00 (16 ORE)	8,800	66.95	589,160
	GSA SHPK	11.04.2019	22.04.2019	07.00-23.00 (16 ORE)	21,120	72.99	1,541,549
	GEN I TIRANA	11.04.2019	22.04.2019	07.00-23.00 (16 ORE)	9,600	74.27	712,992
Total PRILL 2019				236,480.00	62.92	14,879,414	
MAJ	NOA SHPK	01.05.2019	-31.05.2019	0:00 - 24:00	1,680	62.77	105,454
	NOA SHPK	01.05.2019	-31.05.2019	7:00 - 23:00	13,440	73.94	993,754
	RENRGY TRADING GROUP	01.05.2019	-31.05.2019	0:00 - 24:00	2,640	64.96	171,494
	RENRGY TRADING GROUP	01.05.2019	-31.05.2019	7:00 - 23:00	2,112	75.45	159,350
	DEVOLL HYDROPOWER SHA	01.05.2019	-31.05.2019	7:00 - 23:00	5,600	75.43	422,408
	AYEN ENERGY TRADING	01.05.2019	-31.05.2019	7:00 - 23:00	4,464	75.00	334,800
	EFT AG	01.05.2019	-31.05.2019	00:00-24:00	10,584	66.95	708,599
	EFT ag	01.05.2019	-31.05.2019	7:00 - 23:00	39,984	73.83	2,952,019
	GSA SHPK	01.05.2019	-31.05.2019	0:00 - 24:00	37,224	63.90	2,378,614
	GEN I TIRANA	01.05.2019	-31.05.2019	7:00 - 23:00	6,816	74.87	510,314
	NOVA COMMODITIES	01.05.2019	-31.05.2019	0:00 - 24:00	2,760	60.97	168,277
Total MAJ 2019				127,304.00	69.95	8,905,082	
QERSHOR	GEN-I Tirane	01.06.2019	-30.06.2019	0:00-24:00	18,000	47.89	862,200
	GSA	01.06.2019	-30.06.2019	0:00-24:00	54,000	47.88	2,585,520
	ReNRGY	10.06.2019	-16.06.2019	7:00-24:00	595.00	51.91	30,886
	GSA	10.06.2019	-16.06.2019	7:00-24:00	17,255	52.20	900,711
	EFT AG	17.06.2019	-23.06.2019	0:00-24:00	4,200	52.85	221,970
	EFT AG	17.06.2019	-30.06.2019	6:00-24:00	19,152	62.55	1,197,958
	ReNRGY Trading Group sh.p.k	17.06.2019	-23.06.2019	0:00-24:00	168.00	52.89	8,886
	ReNRGY Trading Group sh.p.k	17.06.2019	-30.06.2019	6:00-24:00	1,095	61.74	62,234
	DEVOLL HYDROPOWER	17.06.2019	-23.06.2019	0:00-24:00	840.00	52.95	44,478
	DEVOLL HYDROPOWER	17.06.2019	-30.06.2019	6:00-24:00	5,040	61.82	311,573
	GSA	17.06.2019	-23.06.2019	0:00-24:00	168.00	52.75	8,862
	GSA	17.06.2019	-30.06.2019	6:00-24:00	12,600	62.41	786,366
	Future Energy Tradin and exchange dynamics	24.06.2019	-30.06.2019	00:00-24:00	672.00	62.89	42,262
	Future Energy Tradin and exchange dynamics	24.06.2019	-30.06.2019	06:00-24:00	126.00	71.99	9,071
	EFT AG	24.06.2019	-30.06.2019	00:00-24:00	5,880	65.00	382,200
	EFT AG	24.06.2019	-30.06.2019	06:00-24:00	126.00	72.00	9,072
	GSA	24.06.2019	-30.06.2019	00:00-24:00	840.00	64.90	54,516
Total QERSHOR 2019				140,670.00	53.45	7,818,884	
KORRIK	EFT AG	01.07.2019	-31.07.2019	0:00-24:00	66,960	63.50	4,251,960
	GSA	01.07.2019	-31.07.2019	0:00-24:00	59,520	60.75	3,615,840
	Total KORRIK 2019				126,480	62.21	7,867,800
GUSHT	GRID ENERGY SH.P.K.	01.08.2019	-31.08.2019	00:00-24:00	7,440.00	62.00	461,280.00
	EFT AG	01.08.2019	-31.08.2019	00:00-24:00	11,904.00	62.99	749,832.96
	FUTURE ENERGY TRADING & EXCHANGE DINAM	01.08.2019	-31.08.2019	00:00-24:00	7,440.00	61.50	457,560.00
	ReNRGY TRADING GROUP SH.P.K	01.08.2019	-31.08.2019	00:00-24:00	3,720.00	61.86	230,119.20
	NOA ENERGY SH.P.K.	01.08.2019	-31.08.2019	00:00-24:00	11,160.00	62.30	695,268.00
	NOVA COMMODITIES	01.08.2019	-31.08.2019	00:00-24:00	3,720.00	61.82	229,970.40
	G.S.A SH.P.K.	01.08.2019	-31.08.2019	00:00-24:00	93,000.00	62.25	5,789,250.00
	ENER TRADE SH.P.K	01.08.2019	-31.08.2019	00:00-24:00	2,976.00	61.50	183,024.00
Total GUSHT 2019				141,560	62.23	8,796,304.96	
SHTATOR	ENER TRADE sh.p.k.	01.09.2019	-10.09.2019	00:00 - 24:00 - 24 ore	2,400	68.90	165,360.00
	GEN I TIRANA sh.p.k	01.09.2019	-30.09.2019	00:00 - 24:00 - 24 ore	7,200	69.11	497,592.00
	GEN I TIRANA sh.p.k	01.09.2019	-10.09.2019	00:00 - 24:00 - 24 ore	12,000	69.69	836,280.00
	GSA sh.p.k.	01.09.2019	-30.09.2019	00:00 - 24:00 - 24 ore	50,400	67.25	3,389,400.00
	DEVOLL HYDROPOWER sha	01.09.2019	-30.09.2019	00:00 - 24:00 - 24 ore	10,800	66.29	715,932.00
	DEVOLL HYDROPOWER sha	01.09.2019	-10.09.2019	00:00 - 24:00 - 24 ore	2,400	65.97	158,328.00
	ReNRGY TRADING GROUP sh.p.k.	01.09.2019	-30.09.2019	00:00 - 24:00 - 24 ore	3,600	67.91	244,476.00
	ReNRGY TRADING GROUP sh.p.k	01.09.2019	-10.09.2019	00:00 - 24:00 - 24 ore	2,400	68.89	165,536.00
	EFT AG	01.09.2019	-30.09.2019	00:00 - 24:00 - 24 ore	69,120	69.22	4,784,486.40
	EFT AG	01.09.2019	-10.09.2019	00:00 - 24:00 - 24 ore	16,560	69.86	1,156,881.60
	NOVA COMMODITIES	01.09.2019	-30.09.2019	00:00 - 24:00 - 24 ore	2,880	67.37	194,025.60
	NOVA COMMODITIES	01.09.2019	-10.09.2019	00:00 - 24:00 - 24 ore	240	68.24	16,377.60
	DEVOLL HYDROPOWER sha	12.09.2019	-22.09.2019	00:00 - 24:00 - 24 ore	2,640	61.15	161,436.00
	ReNRGY TRADING GROUP SH.P.K	12.09.2019	-22.09.2019	00:00 - 24:00 - 24 ore	2,640	69.87	184,456.80
	GEN I TIRANA sh.p.k	12.09.2019	-22.09.2019	00:00 - 24:00 - 24 ore	13,200	69.66	919,512.00
	EFT AG	12.09.2019	-22.09.2019	00:00 - 24:00 - 24 ore	13,200	70.00	924,000.00
	EFT AG	23.09.2019	-30.09.2019	00:00 - 24:00 - 24 ore	19,200	67.99	1,305,408.00
Total SHTATOR 2019				230,880	68.52	15,819,288	
TETOR	EFT AG	01.10.2019	-31.10.2019	00:00 - 24:00 - 24 ore	89,400	72.39	6,471,666.00
	GEN-I Tirana sh.p.k	01.10.2019	-31.10.2019	00:00 - 24:00 - 24 ore	29,800	69.69	2,076,762.00
	GEN-I Tirana sh.p.k.	01.10.2019	-10.10.2019	08:00 - 23:00 - 16 ore	160	71.69	11,470.40
	ReNRGY Trading Group	01.10.2019	-31.10.2019	00:00 - 24:00 - 24 ore	7,450	72.10	537,145.00
	NOA ENERGY	01.10.2019	-31.10.2019	00:00 - 24:00 - 24 ore	22,350	72.89	1,629,091.50
	NOA ENERGY	01.10.2019	-10.10.2019	08:00 - 23:00 - 16 ore	1,600	79.29	126,864.00
	AYEN ENERGY TRADING	01.10.2019	-10.10.2019	08:00 - 23:00 - 16 ore	1,600	71.63	114,608.00
	GSA sh.p.k.	01.10.2019	-10.10.2019	08:00 - 23:00 - 16 ore	12,640	79.48	1,004,627.20
	NOA ENERGY	11.10.2019	-20.10.2019	06:00 - 24:00 - 18 ore	3,600	76.42	275,112.00
	GEN-I Tirana sh.p.k					0.10	0.40
	EFT AG	11.10.2019	-20.10.2019	06:00 - 24:00 - 18 ore	5,400	76.48	412,992.00
	Albanian Energy Supplier SH.P.K	11.10.2019	-20.10.2019	06:00 - 24:00 - 18 ore	1,800	74.67	134,406.00
	DEVOLL HYDROPOWER sh.a.	11.10.2019	-20.10.2019	06:00 - 24:00 - 18 ore	4,500	74.46	335,070.00
	ReNRGY Trading Group	11.10.2019	-20.10.2019	06:00 - 24:00 - 18 ore	1,800	75.40	135,720.00
	AYEN ENERGY TRADING	11.10.2019	-20.10.2019	06:00 - 24:00 - 18 ore	900	74.33	66,897.00
	HISE D.O.O LUBJANA	21.10.2019	-31.10.2019	06:00 - 24:00 - 18 ore	4,950	75.45	379,391.00
	DEVOLL HYDROPOWER sh.a.	21.10.2019	-31.10.2019	06:00 - 24:00 - 18 ore	1,980	75.73	149,863.50
ENER TRADE SH.P.K.	21.10.2019	-31.10.2019	06:00 - 24:00 - 18 ore	990	75.98	75,220.20	
ReNRGY Trading Group	21.10.2019	-31.10.2019	06:00 - 24:00 - 18 ore	990	75.90	75,141.00	
Alpiq Energy SE	21.10.2019	-31.10.2019	06:00 - 24:00 - 18 ore	990	75.20	74,448.00	
AYEN ENERGY TRADING	21.10.2019	-31.10.2019	06:00 - 24:00 - 18 ore	990	74.00	73,260.00	
GSA sh.p.k.	21.10.2019	-31.10.2019	06:00 - 24:00 - 18 ore	16,830	75.70	1,274,031.00	
Total TETOR 2019				210,724	73.22	15,428,786	
NENTOR	Power and Gas Operations	01.11.2019	-15.11.2019	00:00 - 24:00 (24 ore)	600	72.50	43,500
	GEN-I Tirana sh.p.k	01.11.2019	-30.11.2019	07:00 - 23:00 (17 ore)	1,600	83.27	133,232
	GEN-I Tirana sh.p.k	01.11.2019	-15.11.2019	00:00 - 24:00 (24 ore)	600	71.88	43,128
	LE TRADIND	01.11.2019	-30.11.2019	07:00 - 23:00 (17 ore)	15,992	82.29	1,315,982
	NOA	01.11.2019	-30.11.2019	07:00 - 23:00 (17 ore)	11,200	83.50	935,200
	NOA	01.11.2019	-15.11.2019	00:00 - 24:00 (24 ore)	1,080	72.90	78,732
	HISE D.O.O LUBJANA	01.11.2019	-30.11.2019	07:00 - 23:00 (17 ore)	1,600	82.30	131,680
	HISE D.O.O LUBJANA	01.11.2019	-15.11.2019	00:00 - 24:00 (24 ore)	600	71.95	43,170
	NOVA COMMODITIES	01.11.2019	-30.11.2019	07:00 - 23:00 (17 ore)	1,600	81.82	130,912
	NOVA COMMODITIES	01.11.2019	-15.11.2019	00:00 - 24:00 (24 ore)	600	69.59	41,754
	AYEN ENERGY TRADING	01.11.2019	-30.11.2019	07:00 - 23:00 (17 ore)	9,600	82.77	794,592
	AYEN ENERGY TRADING	01.11.2019	-15.11.2019	00:00 - 24:00 (24 ore)	120	72.49	8,699
	ReNRGY Trading Group sh.p.k	01.11.2019	-30.11.2019	07:00 - 23:00 (17 ore)	3,200	83.09	265,888
	ReNRGY Trading Group sh.p.k	01.11.2019	-15.11.2019	00:00 - 24:00 (24 ore)	600	72.31	43,386
	Alpiq Energy SE	01.11.2019	-30.11.2019	07:00 - 23:00 (17 ore)	1,600	79.95	127,920
	Alpiq Energy SE	01.11.2019	-15.11.2019	00:00 - 24:00 (24 ore)	600	64.95	38,970
	EFT AG	01.11.2019	-30.11.2019	07:00 - 23:00 (17 ore)	38,336	83.80	3,212,557
EFT AG	01.11.2019	-15.11.2019	00:00 - 24:00 (24 ore)	12,720	7		

Blerjet e OST sh.a të energjisë elektrike në tregun e hapur për vitin 2019

OST sh.a.

Muaji	Kompanitë fituese	Periudha	Intervali i lëvrimit	Sasia (MWh)	Çmimi Euro/M Wh	Vlera pa TVSH (Euro)
JANAR - DHJETOR 2019	DEVOLL HYDROPOWER SH.A.	01.01.2019 - 13.01.2019	00.00 - 24.00 - 24 orë	444	59.82	26,560.08
	DEVOLL HYDROPOWER SH.A.	01.01.2019 - 13.01.2019	00.00 - 24.00 - 24 orë	420	61.17	25,691.40
	NOA ENERGY TRADING SH.P.K.	01.01.2019 - 13.01.2019	00.00 - 24.00 - 24 orë	1,949	66.38	129,374.62
	GEN - I TIRANA SH.P.K.	01.01.2019 - 13.01.2019	00.00 - 24.00 - 24 orë	2,777	79.65	221,188.05
	DEVOLL HYDROPOWER SH.A.	14.01.2019 - 27.01.2019	00.00 - 24.00 - 24 orë	1,680	82.93	139,322.40
	URADRIN SH.P.K.	14.01.2019 - 27.01.2019	00.00 - 24.00 - 24 orë	672	85.11	57,193.92
	DANSKE COMMODITY ALBANIA	14.01.2019 - 27.01.2019	00.00 - 24.00 - 24 orë	336	88.88	29,863.68
	DEVOLL HYDROPOWER SH.A.	14.01.2019 - 27.01.2019	00.08 - 23.00 - 15 orë	1050	97.74	102,627.00
	URADRIN SH.P.K.	14.01.2019 - 27.01.2019	00.08 - 23.00 - 15 orë	630	94.08	59,270.40
	GEN - I TIRANA SH.P.K.	14.01.2019 - 27.01.2019	00.08 - 23.00 - 15 orë	1,260	99.96	125,949.60
	GEN - I TIRANA SH.P.K.	28.01.2019 - 28.02.2019	00.00 - 24.00 - 24 orë	6,144	75.48	463,749.12
	GEN - I TIRANA SH.P.K.	06.02.2019 - 17.02.2019	Peak	2,856	74.38	212,429.28
	KESH SH.A.	18.02.2019 - 28.02.2019	Peak	2,431	59.84	145,471.04
	DANSKE COMMODITY ALBANIA	01.03.2019 - 31.03.2019	00.00 - 24.00 - 24 orë	6,687	48.19	322,246.53
	KESH sh.a.	01.03.2019 - 10.03.2019	00.07 - 23.00 - 16 orë	1,870	47.61	89,030.70
	KESH sh.a.	13.03.2019 - 20.03.2019	00.07 - 23.00 - 16 orë	1,360	50.81	69,101.60
	KESH sh.a.	27.03.2019 - 31.03.2019	00.07 - 23.00 - 16 orë	850	46.94	39,899.00
	KESH sh.a.	01.04.2019 - 07.04.2019	00.07 - 23.00 - 16 orë	952	47.11	44,848.72
	DANSKE COMMODITY ALBANIA	01.04.2019 - 30.04.2019	00.00 - 24.00 - 24 orë	7,200	49.88	359,136.00
	DANSKE COMMODITY ALBANIA	08.04.2019 - 14.04.2019	00.07 - 23.00 - 16 orë	714	49.98	35,685.72
	KESH sh.a.	15.04.2019 - 21.04.2019	00.07 - 23.00 - 16 orë	714	49.67	35,464.38
	DEVOLL HYDROPOWER SH.A.	04.05.2019 - 31.05.2019	00.00 - 24.00 - 24 orë	2,688	62.98	169,290.24
	GSA sh.p.k.	04.05.2019 - 31.05.2019	00.00 - 24.00 - 24 orë	2,016	55.99	112,875.84
	GSA sh.p.k.	04.05.2019 - 31.05.2019	00.00 - 24.00 - 24 orë	1,344	57.99	77,938.56
	GSA sh.p.k.	04.05.2019 - 31.05.2019	00.00 - 24.00 - 24 orë	1,344	58.99	79,282.56
	KESH sh.a.	04.05.2019 - 12.05.2019	00.07 - 23.00 - 16 orë	1,071	49.63	53,153.73
	DANSKE COMMODITY ALBANIA	13.05.2019 - 19.05.2019	00.07 - 23.00 - 16 orë	504	58.25	29,358.00
	GSA sh.p.k.	13.05.2019 - 19.05.2019	00.07 - 23.00 - 16 orë	252	57.99	14,613.48
	KESH sh.a.	20.05.2019 - 26.05.2019	Peak	1,071	44.52	47,680.92
	DEVOLL HYDROPOWER SH.A.	27.05.2019 - 02.06.2019	00.07 - 23.00 - 16 orë	504	56.39	28,420.56
	GSA sh.p.k.	27.05.2019 - 02.06.2019	00.07 - 23.00 - 16 orë	630	56.89	35,840.70
	DEVOLL HYDROPOWER SH.A.	03.06.2019 - 09.06.2019	Peak	1,071	52.96	56,720.16
	GSA sh.p.k.	03.06.2019 - 09.06.2019	Peak	1,071	52.97	56,730.87
	GSA sh.p.k.	03.06.2019 - 09.06.2019	Off-Peak	294	40.97	12,045.18
	GSA sh.p.k.	03.06.2019 - 09.06.2019	Peak	119	53.97	6,422.43
	GSA sh.p.k.	03.06.2019 - 09.06.2019	Off-Peak	196	41.97	8,226.12
	KESH sh.a.	10.06.2019 - 30.09.2019	00.00 - 24.00 - 24 orë	30,072	44.43	1,336,098.96
	KESH sh.a.	10.06.2019 - 30.09.2019	Peak	19,210	49.35	948,013.50
	KESH sh.a.	01.10.2019 - 31.12.2019	00.00 - 24.00 - 24 orë	22,089	54.91	1,212,906.99
	KESH sh.a.	01.10.2019 - 31.12.2019	Peak	16,192	63.21	1,023,496.32
TOTAL BLERJE OST SH.A. 2019				144,734.00	55.57	8,043,218.36

**KRAHËSIMI MUJOR I PERFORMANCËS SË OSHEE NË
TL+TM 2018 - 2019 LIDHUR ME TREGUESIT KRYESORË
SAIFI, SAIDI, CAIDI DHE N1,D1**

	SAIFI		SAIDI		CAIDI		N1		D1	
	Nr.i konsumatoreve te prekur nga nderprerjet/Nr. Kons.Gjithsej		Nr.i oreve te nderprerjeve gjithsej/Nr. Konsumatoreve Gjithsej		Nr.i oreve te nderprerjeve gjithsej /Nr. Kons. Te prekur nga nderprerjet		Numri total I nderprerjeve te paplanifikuara per nje klient te prekur		Kohezgjatja totale per nje klient te prekur nga nderprerjet e paplanifikuara	
	2018	2019	2018	2019	2018	2019	2018	2019	2018	2019
Janar	2.87	2.7	6.23	5.0	4.34	4.0	2.55	2.4	5.51	4.3
Shkurt	3.42	3.7	7.39	8.6	4.31	4.3	3.10	3.3	6.65	7.7
Mars	4.25	2.3	9.03	4.5	3.80	4.3	3.99	1.8	8.29	3.1
Prill	2.54	2.4	4.38	5.3	3.73	4.7	1.88	1.7	2.75	3.3
Maj	3.16	2.3	5.63	4.7	4.03	4.5	2.48	1.7	4.04	3.0
Qershor	3.03	2.3	4.80	3.7	3.55	3.3	2.65	1.8	3.94	2.4
Korrik	2.65	2.6	4.58	4.4	3.35	3.0	2.25	2.3	3.57	3.6
Gusht	2.59	2.0	4.00	3.3	3.11	3.2	2.31	1.5	3.46	2.0
Shtator	2.37	2.4	4.91	4.6	4.36	3.7	1.86	2.0	3.58	3.7
Tetor	2.97	2.1	6.38	5.0	4.68	5.3	2.21	1.5	4.42	3.0
Nentor	2.76	2.4	5.15	3.7	3.80	3.1	2.36	2.1	4.12	3.1
Dhjetor	2.29	2.9	4.67	5.9	4.35	4.1	1.86	2.4	3.87	4.8
	35	30	67	59	47	48	30	24	54	44

Standarde të Cilësisë së Shërbimit të Transmetimit të Energjisë Elektrike (2014-2019)						
	Viti 2014	Viti 2015	Viti 2016	Viti 2017	Viti 2018	Viti 2019
Koha mesatare e ndërprerjes (AIT) (Minuta)	102	60	108	40	34	8.7
Energjia e pa furnizuar (ENS) (MWh)	1435	770	1332	528	454	117
Cilësia e frekuencës (FQ)	+/- 200mHz					
Periudha e njoftimit të ndërprerjeve të planifikuara në sistemin e transmetimit (Orë)	72 orë					
Koha e nevojshme për t'iu përgjigjur kërkesave për lidhjet e reja (ditë)	35	28	32	30	30	42
Indeksi i kohëzgjatjes së ndërprerjeve mesatare (SAIDI) (Minuta)	225	170	240	92	82	26
Cilësia e tensionit (VQ)	Niveli Tensionit 220/154/110 kv					
	(-)10% deri (+) 11.8%					
	Niveli Tensionit 400 kv					
	(-)10% deri (+) 5%					