

**BILANCI ENERJITIK 8-MUJOR 2023 (MWh)**

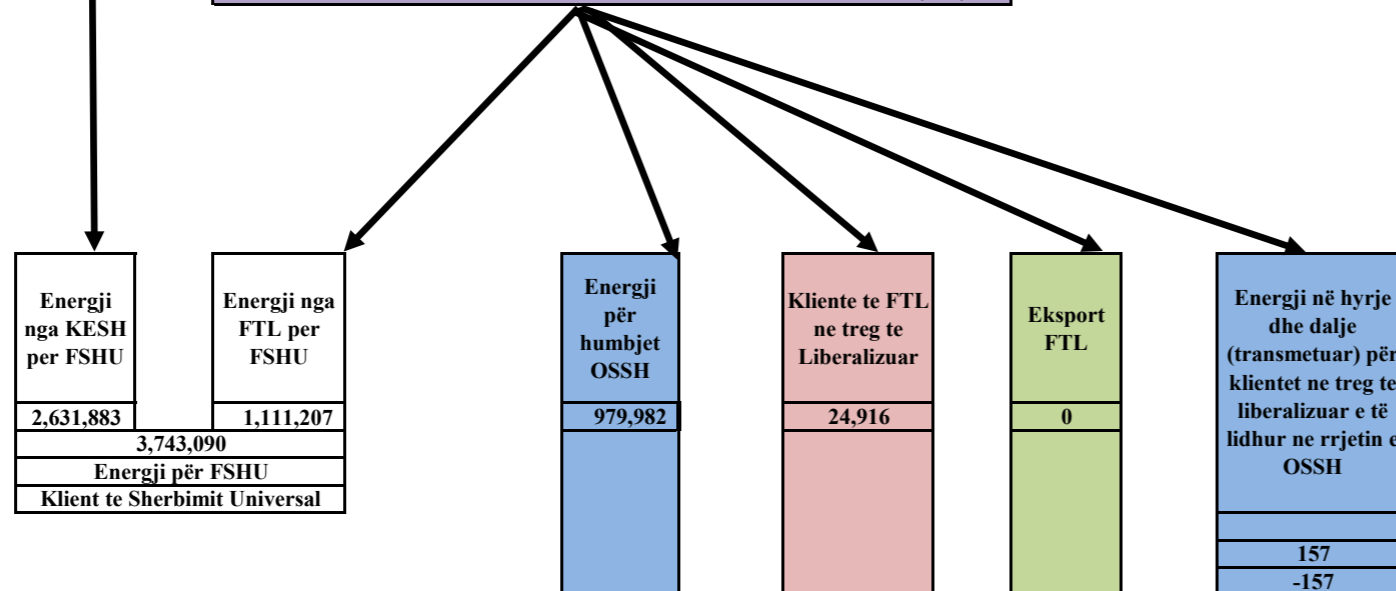
|                                      |                  |
|--------------------------------------|------------------|
| <b>Prodhimi neto publik</b>          |                  |
| <b>Prodhimi Neto KESH sha</b>        |                  |
| 3,664,343                            |                  |
| Blerje KESH ne treg te liberalizuar  | 0                |
| <b>Prodhim+Blerje</b>                | <b>3,664,343</b> |
| Shkembime (hyrje) KEK                | 1,032,460        |
| Shkembime (dalje) KEK                |                  |
| Energji sherbime ndihmese+disbal     |                  |
| <b>Energji per FSHU nga KESH sha</b> | <b>2,631,883</b> |

| Prodhuar nga PPE në rrjetin e OSSH |                                       |                        | Prodhuar nga PPE ne rrjetin e OST    |            | Prodhues te pavarur |              |            |              |           |          |                               |
|------------------------------------|---------------------------------------|------------------------|--------------------------------------|------------|---------------------|--------------|------------|--------------|-----------|----------|-------------------------------|
| Selitë                             | HC.Priv/Kon ne Rrjetin e OSSH për FTL | FOTOVOLTAIK (kont FTL) | HC.Priv/Kon ne Rrjetin e OST për FTL | Neto Ashta | Neto Banja          | Neto Moglica | Neto KURUM | H/C Peshqesh | H/C Fangu | Hec Qami | Fotovoltaik (ne treg te lire) |
| 16,448                             | 704,910                               | 44,885                 | 750,220                              | 196,019    | 115,082             | #####        | 269,520    | 64,287       | 152,713   | 2,664    | 13,743                        |

|                            |
|----------------------------|
| <b>Prodhim neto vendas</b> |
| <b>6,184,698</b>           |

| Energji e siguruar nga FTL |  |                    |   |                   |  |
|----------------------------|--|--------------------|---|-------------------|--|
| Blerje Neto (Selit)        | Blerje HC.Priv/Kon ne Rrjetin e OSSH për FTL | Blerje FOTOVOLTAIK | Blerje HC.Priv/Kon ne Rrjetin e OST për FTL | Blerje Neto Ashta | Blerje ne Treg të Liberalizuar nga FTL |
| 16,448                     | 704,910                                      | 44,885             | 750,220                                     | 196,019           | 403,780                                |
|                            |  |                    |   |                   | 2,116,262                              |

|  |
|--|
| <b>Ballanca në interkoneksion (dhenie)</b> |
| <b>870,808</b>                             |



|                                       |                  |
|---------------------------------------|------------------|
| <b>KONSUMI I ENERJISE NE SHQIPERI</b> | <b>5,313,932</b> |
|---------------------------------------|------------------|

|                  |
|------------------|
| <b>5,313,890</b> |
|------------------|

*Burimi: OST sha; KESH sha; OSSH sha; FSHU sha; FTL sha; (OSHEE Group sha)*



**BILANCI OSSH, FSHU,FTL sha 2023 (8-mujori)**

|     |   |                      |                  |
|-----|---|----------------------|------------------|
| 1   | ENERGJI TOTALE E HYRE NE RRJETIN E OSSH-se  |                      | <b>3,547,925</b> |
| 2   | Energji e shitur nga KESH sha per FSHU sha  |                      | <b>2,631,883</b> |
| 3   | <b>ENERGJI NE HYRJE E BLERE NGA FTL (OSHEE sha)</b>   |                      | <b>2,116,262</b> |
| 3.1 | Blere nga Prodhimi i PPE në rrjetin e OSSH  |                      | 766,243          |
| 3.2 | Blere nga Prodhimi i PPE në rrjetin e OST   |                      | 946,239          |
| 3.3 | Blere ne Treg të Liberalizuar nga FTL sha   |                      | <b>403,780</b>   |
| 4   | <b>ENERGJI NE DALJE NGA FTL (OSHEE sha)</b>   |                      | <b>2,116,262</b> |
| 4.1 | Energji nga FTL per FSHU  |                      | <b>1,111,207</b> |
| 4.2 | Energji nga FTL për humbjet OSSH  |                      | <b>979,982</b>   |
| 4.3 | Energji e shitur nga FTL ne treg te liberalizuar  |                      | <b>24,916</b>    |
| 4.4 | Eksport i FTL   |                      | -                |
| 4.5 | Energji vetem per tu transmetuar tek klientet ne treg te liberalizuar (ne rrjetin e OSSH)               |                      | <b>157</b>       |
| 7   | <b>ENERGJI QE KALON NE RRJETIN E OSSH-se</b>  |                      | <b>5,117,555</b> |
| 7.1 | Energji totale e transmetuar nga OST ne rrjetin e Shpërndarjes  |                      | <b>4,337,568</b> |
| 7.2 | Energji e transmetuar direkt ne rrjetin e Shpërndarjes nga impiantet e lidhur ne rrjetin e Shpërndarjes |                      | <b>391,880</b>   |
| 7.3 | Energjia e ngitur ne rrjetin e transmetimit nga centralet e lidhura ne rrjetin e OSSH                   |                      | <b>374,363</b>   |
| 8   | <b>Humbje totale ne rrjetin e OSSH-se (%)</b>   | <b>7.1 x 100 / 7</b> | <b>19.15</b>     |

**Burimi: OSSH sha; FSHU sha; FTL sha;**

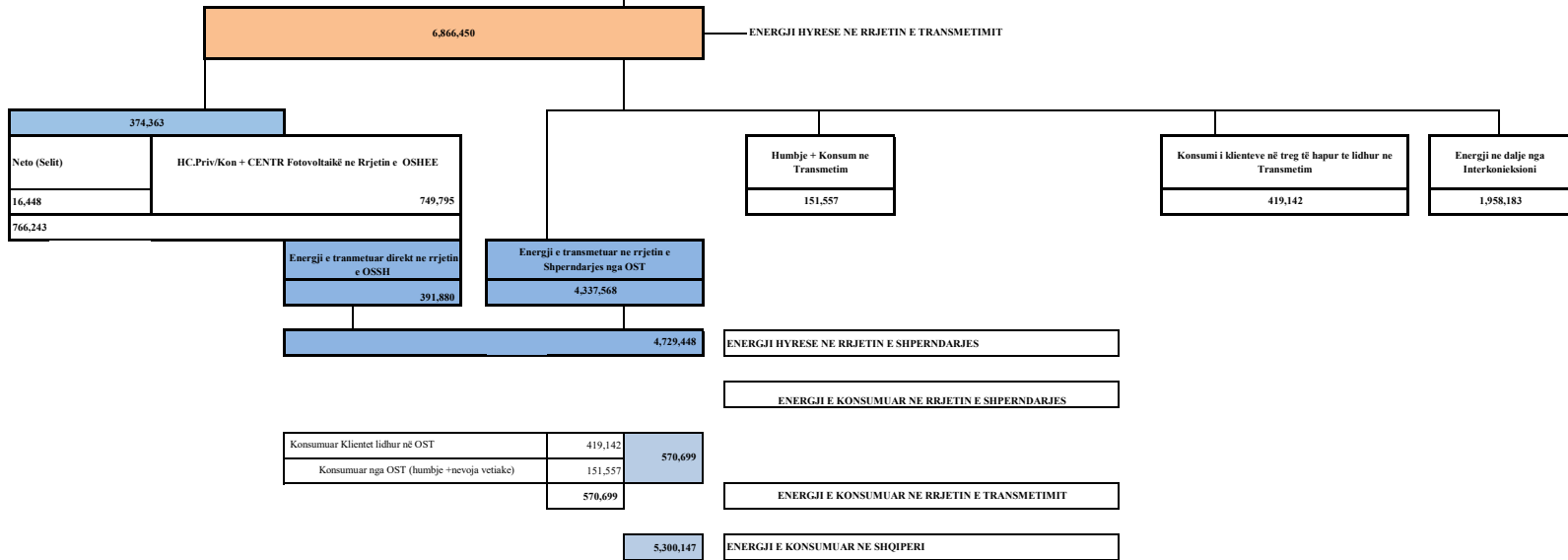
| OST sha   | Njësia e Matjes | Janar     | Shkurt  | Mars    | Prill   | Maj     | Qershor | Korrik    | Gusht     | 8-M 2023  |
|---|-----------------|-----------|---------|---------|---------|---------|---------|-----------|-----------|-----------|
|   | MWh             |           |         |         |         |         |         |           |           |           |
| Prodhimi nga KESH GEN në Rrjetin e Transmetimit               | 1               | 665,048   | 599,427 | 350,763 | 318,558 | 488,334 | 381,563 | 405,103   | 455,548   | 3,664,343 |
| Prodhimi nga HEC/HPP e vogla në Rrjetin e Transmetimit        | 2               | 59,687    | 29,705  | 75,556  | 68,977  | 67,556  | 54,066  | 14,241    | 4,573     | 374,363   |
| Prodhimi nga PPE/IPP e mëdha në Rrjetin e Transmetimit        | 3               | 129,234   | 69,919  | 138,215 | 127,256 | 133,255 | 100,979 | 41,042    | 12,984    | 752,883   |
| Prodhimi nga HEC Peshqesh                                     | 4               | 13,532    | 6,558   | 13,089  | 12,741  | 9,140   | 5,257   | 2,507     | 1,463     | 64,287    |
| Prodhimi nga HEC Banja  | 5               | 19,006    | 17,988  | 18,262  | 12,703  | 7,780   | 20,938  | 10,916    | 7,489     | 115,082   |
| Prodhimi nga HEC FANG   | 6               | 41,733    | 21,699  | 32,666  | 20,161  | 17,504  | 6,123   | 4,155     | 8,673     | 152,713   |
| Prodhimi nga HEC Moglicë                                      | 7               | 30,090    | 33,919  | 31,602  | 23,209  | 12,164  | 37,614  | 14,178    | 7,089     | 189,864   |
| Prodhimi nga nga HEC Ashta                                    | 8               | 35,169    | 30,291  | 23,019  | 20,043  | 26,672  | 20,513  | 18,998    | 21,314    | 196,019   |
| Prodhimi nga KURUM (Ulez-Shkopet&Bistrical,2)                 | 9               | 44,271    | 41,090  | 36,363  | 34,900  | 45,761  | 26,674  | 26,849    | 13,613    | 269,520   |
| Eksporti (-) nga Linjat e Interkonjeksionit                   | D               | 387,717   | 265,662 | 250,922 | 199,681 | 364,397 | 222,009 | 125,007   | 142,789   | 1,958,183 |
| Importi (+) nga Linjat e Interkonjeksionit                    | R               | 51,364    | 63,212  | 131,284 | 135,881 | 106,085 | 113,475 | 235,733   | 250,341   | 1,087,375 |
| Balanca (Total Interkonjeksioni)                              | 11=(R-D)        | 336,353   | 202,450 | 119,638 | 63,799  | 258,312 | 108,535 | (110,726) | (107,553) | 870,808   |
| Energjia Totale në Marrje                                     | +3+4+5+6+7+8+9  | 1,089,134 | 913,807 | 850,819 | 774,430 | 914,251 | 767,200 | 773,722   | 783,086   | 6,866,450 |
| Humbjet në Rrjetin e Transmetimit (përfshirë Nevojat Vetjake) | 13              | 25,216    | 17,110  | 19,532  | 18,151  | 22,863  | 16,197  | 16,646    | 15,842    | 151,557   |
| Humbjet në Rrjetin e Transmetimit %                           | 14=13/12        | 2.32      | 1.87    | 2.30    | 2.34    | 2.50    | 2.11    | 2.15      | 2.02      | 2.21      |
| Energjia Totale në Dhënie                                     | 15=(12-13)      | 1,063,918 | 896,697 | 831,287 | 756,279 | 891,388 | 751,004 | 757,077   | 767,244   | 6,714,894 |
| <i>Transmetuar në Linjat e Interkonjeksionit</i>              | 16=D            | 387,717   | 265,662 | 250,922 | 199,681 | 364,397 | 222,009 | 125,007   | 142,789   | 1,958,183 |
| <i>Transmetuar tek Klientët e Kualifikuar</i>                 |                 | 38,979    | 25,586  | 32,684  | 59,843  | 80,042  | 76,540  | 57,032    | 48,438    | 419,142   |
| <i>EL220-L220KURUM/337</i>                                    |                 | 17,724    | 3,540   | 1,712   | 15,407  | 33,141  | 30,601  | 3,313     | 3,339     | 108,777   |
| <i>Titan T1,T2</i>  |                 | 9,331     | 4,543   | 7,006   | 10,642  | 11,097  | 10,636  | 11,282    | 10,350    | 74,887    |
| <i>FUSHE KRUIJE 220kV-T2/058</i>                              |                 | -         | 409     | 3,878   | 1,910   | 2,903   | 1,997   | 8,346     | 2,418     | 21,860    |
| <i>N/ST 220/6,3Colacent-T1/336</i>                            |                 | 631       | 910     | 2,421   | 1,371   | 1,130   | 2,168   | 1,619     | 216       | 10,465    |
| <i>N/ST i GSA EL 110kV-T1/694</i>                             |                 | 10,555    | 15,188  | -       | -       | -       | -       | -         | -         | 25,742    |
| <i>N/ST i GSA EL 110kV-T2/960</i>                             |                 | -         | 219     | 15,779  | 16,873  | 17,440  | 16,979  | 17,438    | 17,030    | 101,758   |
| <i>N/ST I CWI Albania T1/148</i>                              |                 | 477       | 464     | 469     | 574.19  | 516     | 484     | 162       | 294       | 3,440     |
| <i>N/ST i AES EL 110kV-T1/690</i>                             |                 | 30        | 48      | -       | -       | 1,491   | 6,969   | 7,274     | 7,290     | 23,103    |
| <i>N/ST I AES EL 110kV-T2/692</i>                             |                 | 111       | 84      | 1,175   | 6,722   | 5,719   | -       | -         | 6         | 13,816    |
| <i>HEC Moglice T1,T2,T3</i>                                   |                 | 1         | 2       | 3       | 1       | 2.29    | 2       | 0.6       | 0.9       | 13        |
| <i>HEC Peshqesh-T1/633</i>                                    |                 | 7         | 20      | 4       | 3.52    | 6       | 20      | 31        | 32        | 125       |
| <i>Lajthiza T1/742</i>  |                 | 19        | 61      | 1       | 0.77    | 8       | 138     | 448       | 381       | 1,056     |
| <i>HEC Ashta1-T1,HEC Ashta2-T1,</i>                           |                 | 0.13      | -       | -       | 0.00    | -       | -       | -         | 0.00      | 0         |
| <i>HEC Banje T1,T2</i>  |                 | 14        | 14      | 18      | 15      | 25      | 18      | 21        | 18        | 143       |
| <i>HEC Fang-T1,T2,</i>  |                 | 10        | 27      | 19      | 36      | 34      | 48      | 52        | 47        | 272       |
| <i>Gjenerim KURUM</i>   |                 | 9.11      | 0       | 1       | 16.25   | 0.93    | 7       | 8         | 47        | 89        |
| <i>FERRO KROM-F1,F2,F3,F4</i>                                 |                 | 60        | 57      | 200     | 6,272   | 6,528   | 6,474   | 7,038     | 6,969     | 33,597    |
| <i>Transmetuar në rrjetin e Shpërndarjes</i>                  |                 | 637,223   | 605,449 | 547,681 | 496,756 | 446,949 | 452,455 | 575,038   | 576,018   | 4,337,568 |
| <i>Transmetuar në rrjetin e Shpërndarjes 110 kV</i>           |                 | 557,157   | 527,056 | 480,865 | 437,248 | 395,459 | 400,674 | 507,076   | 509,662   | 3,815,198 |
| <i>Transmetuar në rrjetin e Shpërndarjes 35 kV</i>            |                 | 43,042    | 41,140  | 35,667  | 31,282  | 28,494  | 29,728  | 39,388    | 38,182    | 286,923   |
| <i>Transmetuar në rrjetin e Shpërndarjes 6, 10, 20 kV</i>     |                 | 37,023    | 37,253  | 31,148  | 28,227  | 22,996  | 22,053  | 28,574    | 28,174    | 235,447   |

|  | Janar  | Shkurt  | Mars    | Prill   | Maj     | Qershor | Korrik  | Gusht   | Shtator | Tetor | Nentor | Dhjetor   | 2023      |           |
|--|--|---------|---------|---------|---------|---------|---------|---------|---------|-------|--------|-----------|-----------|-----------|
| HYRJE  | Dhene nga H/C e KESH ne rrjetin e Transmetimit                           | 665,048 | 599,427 | 350,763 | 318,558 | 488,334 | 381,563 | 405,103 | 455,548 |       |        |           | 3,664,343 | 6,866,450 |
|  | Dhene nga H/C e me perparesi ne rrjetin e Transmetimit (+Qami)           | 129,234 | 69,919  | 138,215 | 127,256 | 133,255 | 100,979 | 41,042  | 12,983  |       |        |           | 752,883   |           |
|  | Energji nga Hec-et Lokale levruar ne Rrjetin e Transmetimit (me ngritje) | 59,687  | 29,705  | 75,556  | 68,977  | 67,556  | 54,066  | 14,241  | 4,573   |       |        |           | 374,363   |           |
|  | Gjenerim KURUM (prodhues i pavarur)                                      | 44,271  | 41,090  | 36,363  | 34,900  | 45,761  | 26,674  | 26,849  | 13,613  |       |        |           | 269,520   |           |
|  | HEC ASHTA (prodhues i pavarur Kontr.me OSHEE)                            | 35,169  | 30,291  | 23,019  | 20,043  | 26,672  | 20,513  | 18,998  | 21,314  |       |        |           | 196,020   |           |
|  | HEC BANJE (prodhues i pavarur)   | 19,006  | 17,988  | 18,262  | 12,703  | 7,780   | 20,938  | 10,916  | 7,489   |       |        |           | 115,082   |           |
|  | HEC MOGLICE (prodhues i pavarur)   | 30,090  | 33,919  | 31,602  | 23,209  | 12,164  | 37,614  | 14,178  | 7,089   |       |        |           | 189,864   |           |
|  | HEC PESHQESH-T1/637 (prodhues i pavarur)                                 | 13,532  | 6,558   | 13,089  | 12,741  | 9,140   | 5,257   | 2,507   | 1,463   |       |        |           | 64,287    |           |
|  | HEC FANGU (prodhues i pavarur)   | 41,733  | 21,699  | 32,666  | 20,161  | 17,504  | 6,123   | 4,155   | 8,673   |       |        |           | 152,713   |           |
| Importi(Hyre) nga Linjat e Interkonjeksionit | 51,364   | 63,212  | 131,284 | 135,881 | 106,085 | 113,475 | 235,733 | 250,341 |         |       |        | 1,087,375 |           |           |
| DALJE  | Humbjet ne Transmetim  | 25,216  | 17,110  | 19,532  | 18,151  | 22,863  | 16,197  | 16,646  | 15,842  |       |        |           | 151,557   | 6,866,450 |
|  | Transmetuar ne Rrjetin e Shperndarjes                                    | 637,223 | 605,449 | 547,681 | 496,756 | 446,949 | 452,455 | 575,038 | 576,018 |       |        |           | 4,337,568 |           |
|  | Klientene treg te hapur (TL)   | 38,979  | 25,586  | 32,684  | 59,843  | 80,042  | 76,540  | 57,032  | 48,438  |       |        |           | 419,142   |           |
|  | Eksporti (Dale) nga Linjat e Interkonjeksionit                           | 387,717 | 265,662 | 250,922 | 199,681 | 364,397 | 222,009 | 125,007 | 142,789 |       |        |           | 1,958,183 |           |
| Humbjet ne Transmetim                        | 25,216   | 17,110  | 19,532  | 18,151  | 22,863  | 16,197  | 16,646  | 15,842  |         |       |        | 151,557   |           |           |
| Humbjet ne Transmetim ne %                   | 2.32   | 1.87    | 2.30    | 2.34    | 2.50    | 2.11    | 2.15    | 2.02    |         |       |        | 2.21      |           |           |

Burimi: OST sha

PARAQITJA SKEMATIKE E FLUKSEVE TE ENERGIJSE NE SISTEMIN ELEKTRO-ENERGJITIK SHQIPETAR VITI 2023 (MWh) (8-mujori)

|   |  |  |   |         |         |         |          |       |                                       |
|---|--|--|---|---------|---------|---------|----------|-------|---------------------------------------|
| Energji e levruar nga H/C-et e KESH sha | Energji e levruar nga prodhuesit me përparesi lidhur ne TL (kontrate me OSHEE) | Energji e levruar nga H/C ASHTA lidhur ne TL (kontrate me OSHEE) | Energji e levruar nga H/C et Priv/konc lidhur ne TL (Prodhues ne treg te hapur) |         |         |         |          |       | Energji ne hyrje nga Interkonjeksioni |
| 3,664,343                               | 750,220  | 196,019  | Kurum   | Bançe   | Moglice | Fanga   | Peshqesh | Qami  | 1,087,375                             |
|   |  |  | 269,520   | 115,082 | 189,864 | 152,713 | 64,287   | 2,664 |                                       |



| LEGJENDA |                                 |
|----------|---------------------------------|
| FSHU     | FURNIZUES I SHËRBIMIT UNIVERSAL |
| FMF      | FURNIZUES I MUNDËSISË SË FUNDIT |

Burimi OST sha

**PUBLIKIM 2023 (MWh) (8-mujori)**

| <b>Prodhimi Vendas</b>  | Janar            | Shkurt         | Mars           | Prill          | Maj            | Qershor        | Korrik         | Gusht          | Shtator | Tetor | Nentor | Dhjetor | 2023             |
|---|------------------|----------------|----------------|----------------|----------------|----------------|----------------|----------------|---------|-------|--------|---------|------------------|
| Prodhimi Neto KESH sha.   | 665,048          | 599,427        | 350,763        | 318,558        | 488,334        | 381,563        | 405,103        | 455,548        |         |       |        |         | 3,664,343        |
| Hec-et Private dhe Konk. (Rrjeti Shperndarjes)                          | 115,928          | 74,408         | 132,656        | 121,564        | 114,368        | 92,807         | 36,581         | 16,598         |         |       |        |         | 704,910          |
| Hec-et Private dhe Konk. (Rrjeti Transmetimit)                          | 128,643          | 69,793         | 137,555        | 126,555        | 132,825        | 100,896        | 41,039         | 12,915         |         |       |        |         | 750,220          |
| HEC Ashta   | 35,169           | 30,291         | 23,019         | 20,043         | 26,672         | 20,513         | 18,998         | 21,314         |         |       |        |         | 196,019          |
| Prodhimi Neto Hec Lanabregas  | 1,990            | 1,984          | 2,352          | 2,231          | 2,259          | 1,955          | 1,859          | 1,819          |         |       |        |         | 16,448           |
| Prodhimi Neto (Hec Ulez,Shkopet,Bistrica 1,2)                           | 44,271           | 41,090         | 36,363         | 34,900         | 45,761         | 26,674         | 26,849         | 13,613         |         |       |        |         | 269,520          |
| Prodhimi Hec Peshqesh   | 13,532           | 6,558          | 13,089         | 12,741         | 9,140          | 5,257          | 2,507          | 1,463          |         |       |        |         | 64,287           |
| Prodhimi Hec Fangu  | 41,733           | 21,699         | 32,666         | 20,161         | 17,504         | 6,123          | 4,155          | 8,673          |         |       |        |         | 152,713          |
| Prodhimi Hec Banja  | 19,006           | 17,988         | 18,262         | 12,703         | 7,780          | 20,938         | 10,916         | 7,489          |         |       |        |         | 115,082          |
| Prodhimi Hec Moglica  | 30,090           | 33,919         | 31,602         | 23,209         | 12,164         | 37,614         | 14,178         | 7,089          |         |       |        |         | 189,864          |
| Prodhimi Hec Qami-I   | 592              | 126            | 659            | 702            | 430            | 83             | 3              | 68             |         |       |        |         | 2,663            |
| Prodhimi i Centraleve Fotovoltaike (44 855 FTL +13 743 ne treg te lire) | 3,609            | 5,445          | 5,924          | 7,149          | 8,207          | 8,554          | 10,334         | 9,407          |         |       |        |         | 58,628           |
| <b>ENERGJIA NETO E PRODHUAR NE SHQIPERI</b>                             | <b>1,099,609</b> | <b>902,727</b> | <b>784,911</b> | <b>700,516</b> | <b>865,443</b> | <b>702,975</b> | <b>572,522</b> | <b>555,995</b> |         |       |        |         | <b>6,184,699</b> |

| <b>ENERGJI NGA INTERKONEKSIONI</b>       | Janar   | Shkurt  | Mars    | Prill   | Maj     | Qershor | Korrik    | Gusht     | Shtator | Tetor | Nentor | Dhjetor | 2023      |
|--|---------|---------|---------|---------|---------|---------|-----------|-----------|---------|-------|--------|---------|-----------|
| Energji ne dhenie nga Interkoneksioni    | 387,717 | 265,662 | 250,922 | 199,681 | 364,397 | 222,009 | 125,007   | 142,789   |         |       |        |         | 1,958,183 |
| Energji ne marrje nga Interkoneksioni    | 51,364  | 63,212  | 131,284 | 135,881 | 106,085 | 113,475 | 235,733   | 250,341   |         |       |        |         | 1,087,375 |
| Ballanca Hyrje/Dalje nga Interkoneksioni | 336,353 | 202,450 | 119,638 | 63,799  | 258,312 | 108,535 | (110,726) | (107,553) |         |       |        |         | 870,808   |

| <b>KONSUMI I ENERGJISE NE SHQIPERI</b>  | Janar          | Shkurt         | Mars           | Prill          | Maj            | Qershor        | Korrik         | Gusht          | Shtator | Tetor | Nentor | Dhjetor | 2023             |
|---|----------------|----------------|----------------|----------------|----------------|----------------|----------------|----------------|---------|-------|--------|---------|------------------|
| Konsumi i klientëve Tarifore  | 413,204        | 437,395        | 372,279        | 355,985        | 318,303        | 322,423        | 393,404        | 397,282        |         |       |        |         | 3,010,275        |
| Konsumi i klientëve të furnizuar si FMF   | 87,526         | 86,617         | 92,750         | 82,632         | 87,681         | 85,890         | 99,601         | 96,563         |         |       |        |         | 719,259          |
| Shitur klienteve si dem ekonomik  | 535            | 696            | 702            | 45             | 230            | 78             | 3,379          | 2,977          |         |       |        |         | 8,643            |
| Konsumi i Klientëve që përdorin rrjetin për energjinë e blerë në treg të liberalizuar | 21             | 19             | 26             | 30             | 43             | 19             | -              | -              |         |       |        |         | 158              |
| Energji për Klientet në treg të liberalizuar lidhur në OSSH me furnizues FTL          | 2,078          | 1,828          | 2,363          | 2,941          | 2,650          | 4,147          | 4,132          | 4,776          |         |       |        |         | 24,916           |
| Konsumi për mbulimin e humbjeve   | 195,699        | 131,027        | 144,936        | 117,090        | 95,359         | 89,146         | 109,054        | 97,670         |         |       |        |         | 979,982          |
| Konsumuar nga Klientet e lidhur në OST  | 38,979         | 25,586         | 32,684         | 59,843         | 80,042         | 76,540         | 57,032         | 48,438         |         |       |        |         | 419,143          |
| Konsumuar nga OST (humbje +nevoja veti)   | 25,216         | 17,110         | 19,532         | 18,151         | 22,863         | 16,197         | 16,646         | 15,842         |         |       |        |         | 151,557          |
| <b>KONSUMI TOTAL 2023</b>   | <b>763,258</b> | <b>700,278</b> | <b>665,273</b> | <b>636,716</b> | <b>607,171</b> | <b>594,440</b> | <b>683,248</b> | <b>663,548</b> |         |       |        |         | <b>5,313,932</b> |

Burimi: OST sha; KESH sha; OSSH sha; FSHU sha; FTL sha; (OSHEE Group sha)

| PRODHIMI GJATE VITIT 2023 NGA CENTRALET E LIDHURA NE RRJETIN E TRANSMETIMIT (MWh) |         |                                 |        |         |         |         |         |         |         |         |         |           |
|---|---------|---------------------------------|--------|---------|---------|---------|---------|---------|---------|---------|---------|-----------|
| HECET DHE KAPACITETI  | MW      | SUBJEKTI                        | LIDHJA | JANAR   | SHKURT  | MARS    | PRILL   | MAJ     | QERSHOR | KORRIK  | GUSHT   | 8-M 2023  |
| Hec "Fierze" me fuqi 500 MW   | 500.000 | "KESH" sha                      | 220 kV |         |         |         |         |         |         |         |         |           |
| Hec "Koman" me fuqi 600 MW  | 600.000 |                                 | 220 kV | 665,048 | 599,427 | 350,763 | 318,558 | 488,334 | 381,563 | 405,103 | 455,548 | 3,664,344 |
| Hec "V. Dejes" me fuqi 250 MW   | 250.000 |                                 | 220 kV |         |         |         |         |         |         |         |         |           |
| Hec Vlora me fuqi 98 MW   | 98.000  |                                 | 220 kV |         |         |         |         |         |         |         |         |           |
|   |         |                                 |        |         |         |         |         |         |         |         |         | 3,664,344 |
| Hec "Ulez" me fuqi 25,2 MW  | 25.200  | "Kurum International" sh.a.     | 110 kV |         |         |         |         |         |         |         |         |           |
| Hec "Shkopet" me fuqi 24 MW   | 24.000  |                                 | 110 kV | 44,271  | 41,090  | 36,363  | 34,900  | 45,761  | 26,674  | 26,849  | 13,613  | 269,521   |
| Hec "Bistrica 1" me fuqi 22,5 MW  | 22.500  |                                 | 110 kV |         |         |         |         |         |         |         |         |           |
| Hec "Bistrica 2" me fuqi 5,5 MW   | 5.000   |                                 | 110 kV |         |         |         |         |         |         |         |         |           |
| Hec "Peshqesh" me fuqi 27,94 MW;  | 27.940  | "Ayen As Energji" sha           | 220 kV | 13,532  | 6,558   | 13,089  | 12,741  | 9,140   | 5,257   | 2,507   | 1,463   | 64,287    |
| Hec "Fangu" me fuqi 74,6 MW;  | 74.600  |                                 | 220 kV | 41,733  | 21,699  | 32,666  | 20,161  | 17,504  | 6,123   | 4,155   | 8,673   | 152,714   |
| Hec "Banje" me fuqi 73 MW   | 73.000  |                                 | 110 kV | 19,006  | 17,988  | 18,262  | 12,703  | 7,780   | 20,938  | 10,916  | 7,489   | 115,082   |
| Hec "Moglice" me fuqi 184 MW  | 184.000 |                                 | 111 kV | 30,090  | 33,919  | 31,602  | 23,209  | 12,164  | 37,614  | 14,178  | 7,089   | 189,865   |
| Hec Qami-1  | 1.730   | "Lajthiza Invest" shpk          |        | 592     | 126     | 659     | 702     | 430     | 83      | 3       | 68      | 2,663     |
|   |         |                                 |        |         |         |         |         |         |         |         |         | 794,133   |
| Hec "Ashta" me fuqi 48,2 MW   | 48.200  | "Energji Ashta" shpk            | 110 kV | 35,169  | 30,291  | 23,019  | 20,043  | 26,672  | 20,513  | 18,998  | 21,314  | 196,019   |
|   |         |                                 |        |         |         |         |         |         |         |         |         | 196,019   |
| Hec "Bishnica 2" me fuqi 2,5 MW   | 2.500   | "HEC Bishnica 1,2" shpk         | 110 kV | 1,152   | 670     | 1,405   | 1,312   | 1,203   | 819     | 414     | 234     | 7,209     |
| Hec "Dardhe" me fuqi 5,8 MW   | 5.800   | "Wenerg" shpk                   | 110 kV | 2,658   | 941     | 2,284   | 2,731   | 1,626   | 1,138   | 129     | (12)    | 11,495    |
| Hec "Truen" me fuqi 2,5 MW  | 2.500   | "TRUEN" shpk                    | 110 kV |         |         |         |         |         |         |         |         |           |
| Hec "Ternove" me fuqi 8,385 MW  | 0.921   | "TEODORI 2003" shpk             | 110 kV | 932     | 1,241   | 1,325   | 1,305   | 1,204   | 590     | (14)    | (13)    | 6,570     |
| Hec "Gjorice" me fuqi 4,18 MW (+h/e ne prodhim)                                   | 29.610  | "DITEKO" shpk                   | 110 kV | 15,292  | 11,680  | 16,101  | 14,594  | 12,802  | 9,566   | 6,046   | 3,571   | 89,652    |
| Hec "Sllabinje" me fuqi 13,8 MW   | 13.800  | "Power Elektrik Sllabinje" shpk | 110 kV | 7,972   | 3,915   | 10,486  | 8,748   | 10,801  | 8,130   | 3,053   | 1,562   | 54,668    |
| Hec "Bele 1" me fuqi 5 MW;  | 5.000   | "Euron Energy" shpk             | 110 kV | 15,244  | 10,142  | 17,429  | 19,483  | 20,210  | 19,184  | 10,197  | 3,090   | 114,979   |
| Hec "Topojan 2" me fuqi 5,8 MW;   | 5.800   |                                 |        |         |         |         |         |         |         |         |         |           |
| Hec "Bele 2" me fuqi 11 MW;   | 11.000  |                                 |        |         |         |         |         |         |         |         |         |           |
| Hec "Topojan 1" me fuqi 2,9 MW;   | 2.900   |                                 |        |         |         |         |         |         |         |         |         |           |
| Hec "Orgjost 1 Ri" me fuqi 4,8 MW   | 4.800   | "Energai" shpk                  |        |         |         |         |         |         |         |         |         |           |
| Hec "Cerunje-1" me fuqi 2,3 MW;   | 2.300   | "Energy partners Al" shpk       | 110 kV | 1,460   | 641     | 2,173   | 2,546   | 2,939   | 1,897   | 365     | (11)    | 12,009    |
| Hec "Cerunje-2" me fuqi 2,8 MW;   | 2.800   |                                 |        |         |         |         |         |         |         |         |         |           |
| Hec "Rrupe" me fuqi 3,6 MW;   | 3.600   |                                 |        |         |         |         |         |         |         |         |         |           |
| Hec "Rapuni 1,2" me fuqi 4 dhe 4,1 MW   | 8.100   |                                 |        |         |         |         |         |         |         |         |         |           |
| Hec "Rapuni 3,4" me fuqi 8,857 MW   | 8.850   | "C & S Energy" shpk             | 110 kV | 4,572   | 2,559   | 4,428   | 4,241   | 3,756   | 2,931   | 1,109   | 380     | 23,976    |
| Hec "Llapaj" me fuqi 13,62 MW   | 13.620  | "Gjo.Spa.POWER" shpk            | 110 kV | 4,658   | 2,372   | 5,536   | 6,303   | 9,142   | 5,906   | 2,374   | 831     | 37,122    |
| Hec "Lengarice" me fuqi 8,94 MW   | 8.940   | "Lengarica & Energy" shpk       | 110 kV | 4,024   | 3,108   | 4,350   | 2,666   | 2,495   | 3,104   | 882     | 118     | 20,746    |
| Hec "Lura 1" me fuqi 6,54 MW  | 6.540   | "Erdat Lura" shpk               | 110 kV |         |         |         |         |         |         |         |         |           |
| Hec "Lura 2" me fuqi 4,02 MW  | 4.020   |                                 | 110 kV | 5,715   | 2,381   | 6,188   | 4,763   | 3,782   | 1,848   | 516     | 149     | 25,343    |
| Hec "Lura 3" me fuqi 5,66 MW  | 5.660   |                                 | 110 kV |         |         |         |         |         |         |         |         |           |
| Hec "Malla" me fuqi 5,455 MW  | 5.455   | "Gjure Rec" shpk                | 110 kV | 1,948   | 1,004   | 1,993   | 1,549   | 1,259   | 718     | 277     | (15)    | 8,732     |
| Hec Prella me fuqi 14,97 MW   | 14.970  | "Prelle Energji"                | 110 kV | 5,038   | 2,239   | 5,919   | 4,670   | 4,597   | 3,322   | 928     | 3       | 26,716    |
| HEC Cemerica 1  | 0.88    | "REJ ENERGY" shpk               | 110 kV |         |         |         |         |         |         |         |         |           |
| HEC Cemerica 2  | 1.08    |                                 | 110 kV | 2,005   | 1,277   | 2,343   | 1,691   | 1,956   | 1,795   | 302     | (15)    | 11,353    |
| HEC Cemerica 3  | 2.1     |                                 | 110 kV |         |         |         |         |         |         |         |         |           |
| HEC TUÇ   | 4.47    | MC Inerte Lumzi                 | 110 kV |         |         |         |         |         |         |         |         |           |
| HEC Lumzi   | 11      |                                 | 110 kV | 5,034   | 1,187   | 3,753   | 3,494   | 2,013   | 1,012   | 603     | (19)    | 17,077    |
| Hec Denas   | 14.5    | "Denas Power" shpk              | 110 kV | 5,364   | 2,929   | 5,552   | 3,784   | 4,142   | 4,502   | 976     | 410     | 27,658    |
| Llenga 1  | 1.73    | "HEC LLËNGË" sh.p.k             | 110 kV |         |         |         |         |         |         |         |         |           |
| Llenga 2  | 0.3     |                                 | 110 kV | 918     | 460     | 1,476   | 1,581   | 1,712   | 1,347   | 428     | (5)     | 7,916     |
| Llenga 3  | 1.5     |                                 | 110 kV |         |         |         |         |         |         |         |         |           |
| HEC Shpella Poshte  | 2.3     | Liria Energji shpk              | 110 kV | 966     | 516     | 1,466   | 1,344   | 1,020   | 774     | 340     | 218     | 6,645     |
| HEC Germani 1   | 4.8     | SA/GA-MAT shpk                  | 110 kV | 1,832   | 551     | 1,764   | 1,423   | 913     | 1,334   | 622     | 17      | 8,456     |
| HEC Germani 2   | 1.5     |                                 | 110 kV |         |         |         |         |         |         |         |         |           |
| Hec Lashkiza 1  | 4.076   | HEC Lashkiza shpk               | 110 kV | 1,390   | 597     | 1,116   | 695     | 589     | 195     | 21      | (6)     | 4,596     |
| Hec Lashkiza 2  | 0.882   |                                 | 110 kV |         |         |         |         |         |         |         |         |           |
| Hec Seta 1+2  | 7.454   | "Hydro Seta" sh.p.k             | 110 kV |         |         |         |         |         |         |         |         |           |
| Hec Seta 3  | 2.722   |                                 | 110 kV | 5,190   | 2,577   | 5,540   | 4,838   | 4,150   | 2,090   | 392     | (4)     | 24,773    |
| Hec Seta 4  | 4.724   |                                 | 110 kV |         |         |         |         |         |         |         |         |           |
| HEC Darsi 1,2,3   | 12.7    |                                 | 110 kV | 4,417   | 1,634   | 3,835   | 3,285   | 2,181   | 1,636   | 1,347   | 21      | 18,356    |
| HEC Egnatia   | 5.1     | REMI shpk                       | 110 kV | 1,862   | 715     | 1,453   | 1,566   | 1,340   | 915     | 519     | 286     | 8,656     |
| HEC Seka & Zais/684   | 14.96   | SEKA Hydropower shpk            | 110 kV | 7,858   | 4,206   | 10,123  | 8,762   | 8,786   | 6,198   | 2,387   | 612     | 48,934    |
| HEC ARSTI   | 3.13    | Hec Arsti shpk                  | 110 kV | 2,088   | 1,158   | 1,885   | 1,844   | 1,322   | 845     | 129     | (4)     | 9,267     |
| HEC KASKADA GJADER TI/344   | 24.9    | S.P.E. Gjader shpk              | 110 kV | 3,766   | 1,252   | 3,542   | 3,193   | 1,414   | 412     | 62      | 69      | 13,711    |
| HEC-et Dragobia&Ceremi/686  | 21.9    | Dragobia Energy shpk            | 110 kV | 8,543   | 4,249   | 7,679   | 7,383   | 14,533  | 8,961   | 3,504   | 1,411   | 56,260    |
| HEC Veleshtica 1,2  | 13.9    | "Kalisi Hydropower" shpk        | 110 kV | 2,423   | 1,168   | 1,899   | 1,840   | 5,361   | 5,342   | 1,433   | (12)    | 19,456    |
|   |         |                                 |        |         |         |         |         |         |         |         |         | 2,266     |
|   |         |                                 |        | 128,643 | 69,793  | 137,555 | 126,555 | 132,825 | 100,896 | 41,039  | 12,915  | 750,220   |

| PRODHIMI GJATE VITIT 2023 NGA CENTRALET E LIDHURA NE RRJETIN E SHPERNDARJES (MWh) |       |                               |        |       |        |       |       |       |         |        |       |          |
|---|-------|-------------------------------|--------|-------|--------|-------|-------|-------|---------|--------|-------|----------|
| HECET DHE KAPACITETI  | MW    | SUBJEKTI                      | LIDHJA | JANAR | SHKURT | MARS  | PRILL | MAJ   | QERSHOR | KORRIK | GUSHT | 8-M 2023 |
| Hec "Lanabregas"  | 5.000 | "Hec Lanabregas" sha          | 35     | 1,990 | 1,984  | 2,352 | 2,231 | 2,259 | 1,955   | 1,859  | 1,819 | 16,448   |
| Hec "Lenie"   | 0.400 | "EMIKEL 2003" sh.p.k          | 10kV   | 270   | 216    | 282   | 276   | 281   | 274     | 206    | 125   | 1,931    |
| Hec "Çorovode"  | 0.200 |                               | 10kV   | 88    | 87     | 108   | 100   | 101   | 86      | 22     | -     | 592      |
| Hec "Smokthine"   | 9.200 | "Albania Green Energy" sh.p.k | 35 kV  | 4,172 | 4,461  | 3,923 | 3,327 | 3,147 | 2,999   | 2,509  | 2,078 | 26,615   |
| Hec "Bulqize"   | 0.600 | "Balkan Green Energy" shpk    | 10kV   | 124   | 93     | 158   | 153   | 166   | 130     | 98     | 72    | 993      |
| Hec "Homesh"  | 0.395 |                               | 10kV   | 68    | 46     | 57    | 52    | 55    | 52      | 17     | -     | 346      |
| Hec "Zerqan"  | 0.625 |                               | 6kV    | 104   | 131    | 174   | 174   | 165   | 128     | 114    | 98    | 1,089    |
| Hec "Arras"   | 4.800 |                               | 20kV   | 2,205 | 2,202  | 2,730 | 2,354 | 2,232 | 1,174   | 221    | -     | 13,117   |
| Hec "Orgjost"   | 1.200 |                               | 10kV   | 700   | 625    | 724   | 753   | 671   | 613     | 413    | 134   | 4,634    |
| Hec "Lekbibaj"  | 1.400 |                               | 10kV   | 686   | 651    | 855   | 774   | 767   | 715     | 679    | 331   | 5,458    |
| Hec "Dukagjin"  | 0.640 |                               | 10kV   | 129   | 131    | 143   | 136   | 135   | 80      | 282    | 270   | 1,305    |
| Hec "Marjan"  | 0.200 |                               | 10kV   | -     | -      | -     | -     | -     | -       | -      | -     | -        |
| Hec "Lozhan"  | 0.100 |                               | 10kV   | 44    | 26     | 59    | 63    | 55    | 27      | -      | -     | 274      |
| Hec "Barmash"   | 0.830 |                               | 10kV   | 138   | 209    | 233   | 137   | 117   | 118     | 62     | -     | 1,014    |
| Hec "Treske 2"  | 0.250 |                               | 10kV   | 86    | 86     | 124   | 99    | 95    | 82      | 25     | -     | 598      |
| Hec "Nikolice"  | 0.700 |                               | 10kV   | 159   | 112    | 202   | 222   | 255   | 198     | 135    | 70    | 1,353    |
| Hec "Funares"   | 1.920 |                               | 10kV   | 852   | 849    | 821   | 868   | 835   | 738     | 232    | -     | 5,195    |
| Hec "Lumik"   | 0.200 |                               | 10kV   | 143   | 134    | 135   | 144   | 139   | 107     | -      | -     | 802      |



|                         |        |                                   |         |       |       |       |       |       |       |       |       |        |
|-------------------------|--------|-----------------------------------|---------|-------|-------|-------|-------|-------|-------|-------|-------|--------|
| Hec "Kerpice"           | 0.420  |                                   | 6kV     | 70    | 47    | 59    | 57    | 64    | 72    | 66    | 73    | 508    |
| Hec "Ujanik"            | 0.630  |                                   | 10kV    | 132   | 89    | 172   | 140   | 110   | 102   | 47    | 0     | 792    |
| Hec "Borsh"             | 0.250  |                                   | 6kV     | 62    | 113   | 78    | 119   | 96    | 82    | 35    | 32    | 618    |
| Hec "Leshnice"          | 0.380  |                                   | 10/6kV  | 104   | 121   | 115   | 83    | 69    | 41    | 24    | 4     | 560    |
| Hec "Velecan"           | 1.200  |                                   | 10kV    | 413   | 286   | 619   | 463   | 743   | 511   | 175   | 64    | 3,274  |
| Hec "Muhur"             | 0.250  |                                   | 6kV     | 76    | 75    | 84    | 72    | 66    | 24    | -     | -     | 397    |
| Hec "Rajan"             | 1.020  |                                   | 10kV    | 276   | 371   | 494   | 321   | 246   | 179   | 96    | -     | 1,983  |
| Hec "Lure"              | 0.750  |                                   | 10kV    | 78    | 16    | 43    | 30    | 33    | 5     | 0     | -     | 206    |
| Hec "Gjanc "            | 2.960  | "Spahiu Gjanc" sh.p.k.            | 35 kV   | -     | 5     | 1,594 | -     | 539   | 1,170 | 1,755 | 1,703 | 6,765  |
| Hec "Bogove"            | 2.500  | "Wonder power" sha                | 35 kV   | 993   | 689   | 1,330 | 813   | 965   | 1,194 | 297   | 48    | 6,329  |
| Hec "Xhyre"             | 0.570  | "Amal" sh.p.k                     | 10kV    | 241   | 207   | 227   | 210   | 216   | 184   | 119   | 84    | 1,487  |
| Hec "Stranik"           | 4.600  | "Hidroinvest 1" shpk              | 35kV    | 1,875 | 1,060 | 2,117 | 1,829 | 1,364 | 841   | 215   | -     | 9,300  |
| Hec "Zall Tore"         | 3.000  |                                   | 35kV    | 1,468 | 885   | 1,666 | 1,580 | 1,171 | 792   | 446   | 214   | 8,220  |
| Hec "Klos"              | 1.950  | "Malido-Energji" shpk             | 6kV     | 568   | 313   | 512   | 406   | 329   | 201   | 65    | -     | 2,393  |
| Hec "Borje"             | 1.500  | "HIDROALBANIA Energji" shpk       | 35kV    | 2,275 | 1,448 | 2,495 | 2,830 | 3,813 | 3,156 | 1,803 | 649   | 18,468 |
| Hec "Cernaleve "        | 2.950  | "HIDROALBANIA Energji" shpk       | 35kV    | 989   | 585   | 1,018 | 1,235 | 1,848 | 1,388 | 680   | 269   | 8,012  |
| Hec "Cernaleve 1"       | 3.270  | "HIDROALBANIA Energji" shpk       | 35kV    | 1,087 | 641   | 1,129 | 1,345 | 2,039 | 1,542 | 755   | 303   | 8,841  |
| Hec "Murdarh 1"         | 2.680  | "HydroEnergy "shpk                | 10kV    | 1,654 | 1,072 | 1,579 | 1,915 | 1,050 | 748   | 195   | 56    | 8,270  |
| Hec "Murdarh 2"         | 1.000  |                                   | 10kV    | 964   | 621   | 906   | 1,141 | 624   | 373   | 90    | 27    | 4,747  |
| Hec "Dishnice"          | 0.200  | "Dishnica Energy" shpk            | 10kV    | 30    | 22    | 51    | 70    | 79    | 47    | 31    | 13    | 343    |
| Hec "Lubonje"           | 0.300  | "Elektro Lubonje" shpk            | 10kV    | 90    | 57    | 97    | 66    | 68    | 33    | -     | -     | 410    |
| Hec "Peshke"            | 3.430  | "Koka & Ergi Energy Peshk" shpk   | 35kV    | 1,564 | 924   | 2,143 | 1,952 | 1,435 | 1,429 | 377   | -     | 9,823  |
| Hec "Labinot -Mal"      | 0.250  | "Ansara Koncension" shpk          | 6kV     | 42    | 43    | 42    | 44    | 44    | 30    | 18    | 5     | 268    |
| Hec "Pobreg"            | 12.300 | "Energy Plus" shpk                | 35kV    | 5,448 | 3,469 | 6,101 | 6,915 | 7,184 | 6,590 | 2,578 | 235   | 38,520 |
| Hec "Vlushe"            | 14.200 | "Hec Vlushe" shpk                 | 35kV    | 5,707 | 2,602 | 5,944 | 4,223 | 5,330 | 4,042 | 708   | -     | 28,556 |
| Hec "Belesova 1"        | 0.150  | "Korkis 2009" shpk                | 6kV     | 17    | 6     | 18    | -     | 28    | 11    | -     | -     | 80     |
| Hec "Faqekuq 1,2"       | 6.400  | "HP OSTROVICA" shpk               | 35kV    | 1,709 | 882   | 2,227 | 2,198 | 3,554 | 2,092 | 419   | 190   | 13,271 |
| Hec "Shemri"            | 1.000  | "Erald Energjitik" shpk           | 10      | 454   | 123   | 438   | 440   | 242   | 190   | -     | -     | 1,887  |
| Hec "Mgulle"            | 0.280  |                                   | 10kV    | 247   | 163   | 297   | 293   | 230   | 160   | 2     | -     | 1,391  |
| Hec "Kryezi 1"          | 0.600  | "Bekim Energjitik" shpk           | 10kV    | 545   | 212   | 516   | 555   | 298   | 68    | -     | -     | 2,194  |
| Hec "Selishte"          | 2.000  | "Selishte" shpk                   | 35kV    | 795   | 474   | 1,131 | 1,022 | 810   | 499   | 187   | 124   | 5,041  |
| Hec "Carshove"          | 1.500  |                                   | 10kV    | 408   | 404   | 460   | 307   | 304   | 299   | 64    | 0     | 2,248  |
| Hec "Ura e Dashit"      | 1.200  | "ERMA MP" shpk                    | 10kV    | 1,411 | 1,059 | 1,609 | 1,015 | 946   | 1,150 | 190   | 17    | 7,396  |
| Hec "Gizavesh"          | 0.500  | "Dosku Energy" shpk               | 10kV    | 362   | 298   | -     | -     | -     | -     | -     | -     | 660    |
| Hec "Koka 1"            | 3.200  | "Snow Energy" shpk                | 35kV    | 573   | 312   | 1,015 | 1,095 | 666   | 680   | 230   | 120   | 4,693  |
| Hec "Stravaj"           | 3.600  | "Stravaj Energji" shpk            | 35kV    | 1,664 | 897   | 1,934 | 1,725 | 1,182 | 844   | 305   | 116   | 8,667  |
| Hec "Picar 1"           | 0.200  | "Peshku Picar 1" shpk             | 6kV     | 67    | 96    | 83    | 63    | 52    | 40    | 36    | 25    | 461    |
| Hec "Vertop"            | 1.520  | "Hydro Salillari Energy" shpk     | 35kV    | 297   | 190   | 270   | 244   | 50    | 149   | 70    | -     | 1,271  |
| Hec "Martnesh"          | 10.500 | "Albanian Power" shpk             | 35kV    | 2,242 | 1,353 | 3,360 | 2,833 | 2,147 | 2,172 | 459   | -     | 14,567 |
| Hec "Verba 1,2"         | 5.000  | "Hydro power Plant Of Korea" shpk | 35kV    | 611   | 392   | 812   | 991   | 2,300 | 1,404 | 350   | 114   | 6,974  |
| Hec "Pterra"            | 1.080  | "Hydro Borshi" shpk               | 35kV    | 843   | 700   | 1,009 | 870   | 793   | 679   | 562   | 520   | 5,977  |
| Hec "Ostren i Vogel"    | 0.320  | "Lu & Co Eco Energy" shpk         | 10kV    | 91    | 85    | 107   | 108   | 111   | 93    | 81    | 64    | 739    |
| Hec "Kozel"             | 0.500  |                                   | 10kV    | 101   | 48    | 72    | 133   | 157   | 134   | -     | -     | 646    |
| Hec "Helmes 1"          | 0.800  | "E.T.H.H. "shpk                   | 10kV    | 209   | 118   | 253   | 352   | 341   | 213   | 16    | -     | 1,502  |
| Hec "Helmes 2"          | 0.500  |                                   | 10kV    | 103   | 71    | 132   | 157   | 186   | 160   | 18    | -     | 826    |
| Hec "Qafezeze"          | 0.400  | "Caushi Energji" shpk             | 10kV    | 396   | 282   | 459   | 420   | 422   | 400   | 67    | 32    | 2,477  |
| Hec "Trebisht"          | 1.775  | "S.A.G.L.E.Kompani" shpk          | 10kV    | 654   | 321   | 712   | 753   | 593   | 243   | -     | -     | 3,276  |
| Hec "Mollaj"            | 0.600  | "Energji Xhaci" shpk              | 10kV    | -     | -     | 76    | 59    | 161   | 163   | -     | -     | 459    |
| Hec "Tucep"             | 0.400  | "Tucep" shpk                      | 10kV    | 272   | 268   | 299   | 3     | 300   | 270   | 255   | 215   | 1,882  |
| Hec "Treska4"           | 3.600  |                                   | 35kV    | 1,298 | 911   | 1,358 | 1,035 | 1,025 | 975   | 440   | 296   | 7,340  |
| Hec "Treska3"           | 0.300  | "Hec-Treske" shpk                 | 35kV    | 206   | 134   | 216   | 158   | 161   | 154   | 65    | 44    | 1,139  |
| Hec "Treska 2T"         | 0.620  |                                   | 35kV    | 450   | 234   | 343   | 258   | 256   | 223   | 101   | 65    | 1,929  |
| Hec "Sotire1 & 2"       | 2.200  | "Hidro Energy Sotire" shpk        | 35kV    | 714   | 312   | 606   | 507   | 634   | 913   | 505   | 95    | 4,287  |
| Hec "Shutine"           | 2.400  | "Shutina energji" shpk            | 10kV    | 427   | 239   | 584   | 549   | 261   | 113   | -     | -     | 2,173  |
| Hec "Cekrez 1,2"        | 0.660  | "Zall Herr Energji 2011" shpk     | 6kV     | 289   | 273   | 307   | 298   | 200   | 406   | 398   | 392   | 2,563  |
| Hec "Qarr"              | 1.000  | "Hec Qarr & Kaltani" shpk         | 35kV    | 764   | 373   | 585   | 327   | 282   | 386   | 131   | 142   | 2,990  |
| Hec "Bisak"             | 1.300  | "Bardhgjana" shpk                 | 6kV     | 645   | 436   | 595   | 423   | 333   | 209   | 149   | -     | 2,791  |
| Hec "Shales"            | 1.080  | "Gjoka Konstruksion Energji" shpk | 35kV    | -     | -     | 316   | 323   | 245   | 161   | 66    | 3     | 1,114  |
| Hec "Strelece"          | 1.174  |                                   | 35kV    | 405   | 367   | 916   | 802   | 557   | 727   | 98    | 3     | 3,875  |
| Hec "Shpelle Poshte"    | 0.400  | "Sarolli" sh.p.k                  | 10kV    | 117   | 75    | 179   | 214   | 111   | 127   | 44    | 6     | 874    |
| Hec "Bicaj"             | 3.100  | "EN-KU" sh.p.k                    | 10kV    | -     | -     | -     | -     | -     | -     | -     | -     | -      |
| Hec "Leskovik 1"        | 1.072  | "Maksi Elektrik" sh.p.k           | 10kV    | 41    | 43    | 49    | 46    | 42    | 39    | 24    | -     | 284    |
| Hec "Leskovik 2"        | 1.100  |                                   | 10kV    | 51    | 55    | 62    | 59    | 63    | 59    | 35    | -     | 384    |
| Hec "Orenje"            | 0.875  | "Juana" sh.p.k                    | 10kV    | 250   | 201   | 191   | 193   | 163   | 109   | -     | -     | 1,106  |
| Hec "Tamarë"            | 0.750  | "WTS Energji" shpk                | 10kV    | -     | -     | -     | -     | -     | -     | -     | -     | -      |
| Hec "Benë"              | 1.000  | "Marjakaj" shpk                   | 6kV     | 163   | 124   | 162   | 163   | 155   | 50    | -     | -     | 818    |
| Hec "Vithkuq 2"         |        |                                   |         | -     | 879   | -     | -     | -     | 1,226 | 306   | 166   | 2,577  |
| Hec "Vithkuq 1"         | 2.715  | "Favina 1" shpk                   | 35/10kV | 1,585 | -     | -     | 1,408 | 1,257 | -     | -     | -     | 4,250  |
| Hec "Selece"            | 1.600  | "Selece Energji" shpk             | 10kV    | 615   | 506   | 575   | 788   | 1,149 | 882   | 270   | 218   | 5,004  |
| Hec "Kumbull- Merkurth" | 0.830  | "DN & NAT Energy" shpk            | 6kV     | 171   | 54    | 230   | 207   | 346   | 100   | -     | -     | 1,108  |
| Hec "Sasaj"             | 8.600  | "Energo - Sas" shpk               | 35kV    | 2,757 | 2,333 | 3,041 | 2,471 | 2,355 | 1,711 | 924   | 920   | 16,511 |
| Hec "Tervol"            | 10.600 | "Hec i Tervolli" shpk             | 35kV    | 3,704 | 1,461 | 4,999 | 4,757 | 3,025 | 2,556 | 1,017 | 507   | 22,026 |
| Hec "Radove"            | 2.500  | "MTC Energy" shpk                 | 10kV    | 1,213 | 1,053 | 1,184 | 737   | 765   | 918   | 335   | 183   | 6,387  |
| Hec "Gurshpat 1"        | 0.840  | "Gurshpat Energy" shpk            | 10kV    | 721   | 511   | 496   | 575   | 491   | 341   | 176   | 70    | 3,379  |
| Hec "Gurshpat 2"        | 0.830  |                                   | 10kV    | 817   | 563   | 617   | 653   | 542   | 375   | 144   | 63    | 3,774  |
| Hec "Bistrica 3"        | 1.570  | "Bistrica 3 Energy" shpk          | 6kV     | 477   | 42    | -     | 13    | 605   | 658   | 559   | 418   | 2,772  |
| Hec "Hurdhas 1"         | 1.710  | "Komp Energji" shpk               | 6kV     | 2,102 | 1,064 | 1,732 | 1,692 | 1,326 | 667   | 605   | 57    | 9,243  |
| Hec "Perrollaj"         | 0.500  | "Fatlum" shpk                     | 10kV    | 145   | 39    | 86    | 137   | 68    | -     | -     | -     | 474    |
| Hec "Koxheraj"          | 0.620  | "Koxherri Energji" shpk           | 10kV    | 206   | 136   | 260   | 210   | 171   | 182   | 80    | 34    | 1,278  |



|   |    |                              |       |              |              |              |              |              |              |              |              |               |
|---|----|------------------------------|-------|--------------|--------------|--------------|--------------|--------------|--------------|--------------|--------------|---------------|
| Topojë 2                                    | 2  | "AED SOLAR" sh.p.k           | 35 kV | 192          | 283          | 281          | 393          | 399          | 391          | 455          | 417          | 2,811         |
| Topojë (Sheq Marinas)                       | 2  | "AGE SUNPOWER" sh.p.k        | 35 kV | 187          | 285          | 281          | 392          | 399          | 392          | 457          | 419          | 2,812         |
| Topojë (Sheq Marinas) 2                     | 2  | "SEMAN SUNPOWER" sh.p.k      | 35 kV | 199          | 289          | 287          | 407          | 411          | 397          | 462          | 423          | 2,875         |
| Seman solar                                 | 2  | "SEMANISOLAR " sh.p.k        | 35 kV | 201          | 293          | 292          | 391          | 385          | 372          | 438          | 411          | 2,783         |
| ES 2019 sh.p.k                              | 2  | ES 2019 sh.p.k               | 35 kV | 221          | 319          | 352          | 431          | 428          | 413          | 487          | 461          | 3,112         |
| SMART WATT sh.p.k                           | 2  | SMART WATT sh.p.k            | 35 kV | 221          | 323          | 349          | 434          | 425          | 411          | 488          | 462          | 3,113         |
| Tren Bilisht                                | 2  | " RTS " sh.p.k               | 35 kV | 215          | 303          | 315          | 290          | 293          | 349          | 472          | 387          | 2,624         |
| STATKRAFT Renewbles albani PV Lndrues banje | 2  | "STATKRAFT"                  | 35 kV | 77           | 126          | 167          | 197          | 178          | 181          | 259          | 295          | 1,480         |
| Pv -Plug                                    | 2  | "AEE" sh.p.k                 | 10 kv | 187          | 291          | 383          | 459          | 480          | 464          | 534          | 471          | 3,270         |
| Korca Photovoltaic Park Shpk/920            | 2  | Korca Photovoltaic Park Shpk | 35 kV | 195          | 306          | 316          | 291          | 258          | 365          | 461          | 422          | 2,614         |
| NTSP Shpk/944                               | 2  | NTSP Shpk                    | 35 kV | 204          | 304          | 300          | 288          | 255          | 361          | 453          | 418          | 2,583         |
| Sun Beat System Shpk/921                    | 2  | Sun Beat System Shpk         | 35 kV | 199          | 307          | 312          | 293          | 257          | 359          | 461          | 423          | 2,612         |
| Tren Sun System Shpk/919                    | 2  | Tren Sun System Shpk         | 35 kV | 204          | 312          | 319          | 290          | 258          | 359          | 440          | 426          | 2,607         |
| ERENI SOLAR                                 |    | ERENI SOLAR shpk 35 kv       | 35 kV | -            | -            | -            | -            | 456          | 377          | 482          | 469          | 1,784         |
| GREEN ENERGY BILISHTI                       |    | GREEN ENERGY BILISHTI SHK    | 36 kV | -            | -            | -            | -            | 567          | 467          | 589          | 537          | 2,160         |
| <b>Total</b>                                |    |                              |       | <b>2,883</b> | <b>4,314</b> | <b>4,520</b> | <b>5,340</b> | <b>6,249</b> | <b>6,449</b> | <b>7,854</b> | <b>7,276</b> | <b>44,885</b> |
| EZ-5 Solar Park                             | 10 | EZ-5 Solar Park              | 35 kV | 364          | 564          | 698          | 970          | 965          | 1,046        | 1,223        | 1,021        | 6,851         |
| EZ-5 Solar Park                             |    | EZ-5 Solar Park              | 35 kV | 362          | 567          | 706          | 839          | 993          | 1,060        | 1,257        | 1,109        | 6,892         |
| Tot ne treg te lire                         |    |                              |       | <b>725</b>   | <b>1,131</b> | <b>1,404</b> | <b>1,808</b> | <b>1,958</b> | <b>2,105</b> | <b>2,480</b> | <b>2,131</b> | <b>13,743</b> |

**40**

**3,609    5,445    5,924    7,149    8,207    8,554    10,334    9,407    58,628**

**Kapaciteti Instaluar i gjithe prodhuesve 2,634 MW**

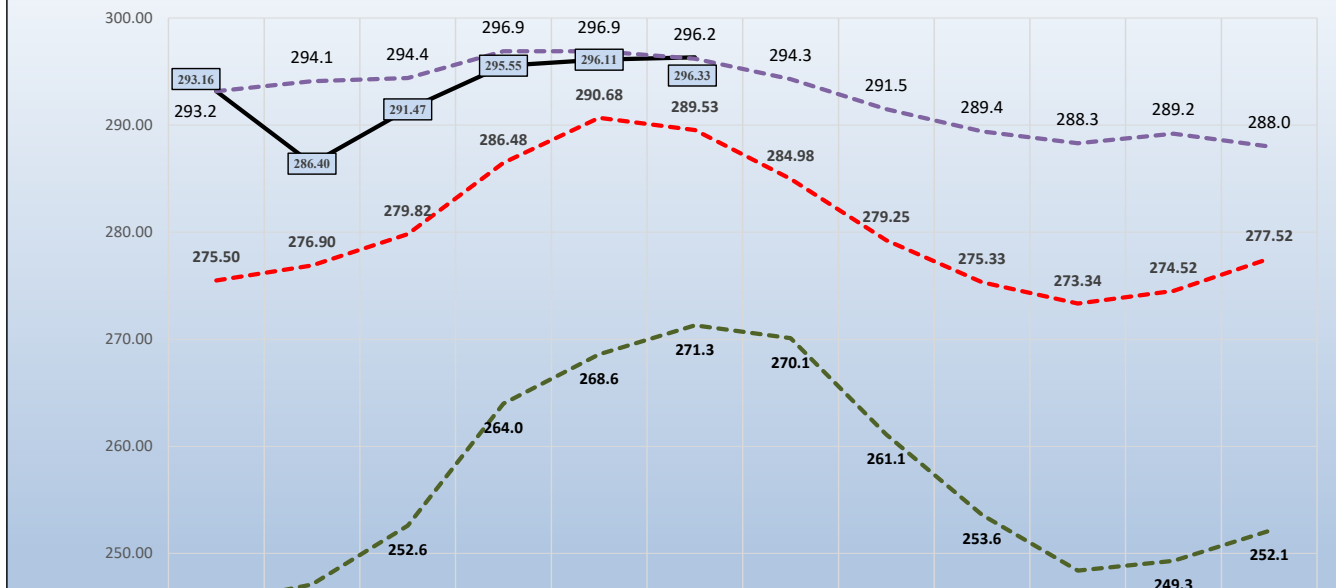
**6,184,702**

### NIVELI I FIERZES 1991-2023

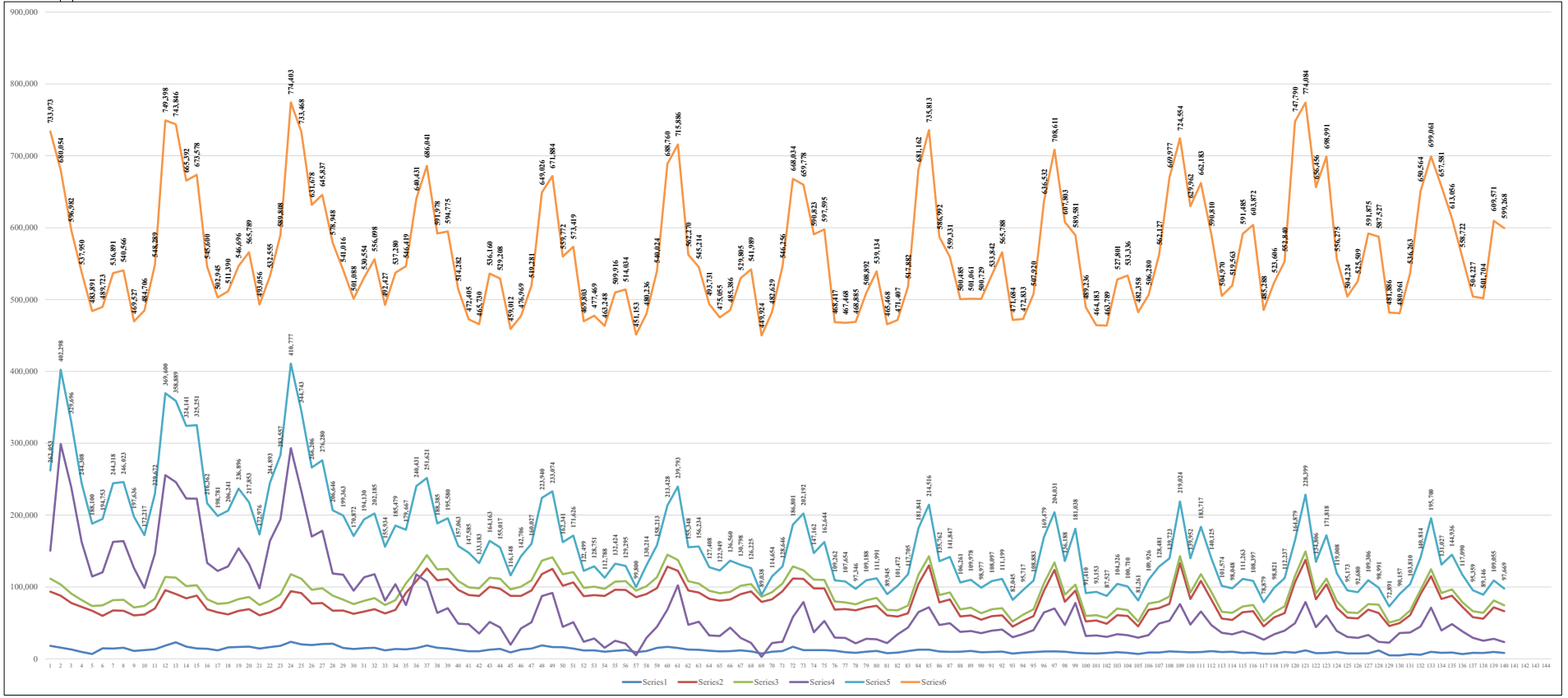
|      | Janar | Shkurt | Mars  | Prill | Maj   | Qershor | Korrik | Gusht | Shtator | Tetor | Nentor | Dhjetor |
|------|-------|--------|-------|-------|-------|---------|--------|-------|---------|-------|--------|---------|
| 1991 | 254.4 | 260.8  | 268.6 | 279.9 | 293.4 | 296.1   | 294.0  | 291.5 | 289.4   | 288.3 | 288.8  | 285.1   |
| 1992 | 278.0 | 274.1  | 268.0 | 278.8 | 281.0 | 279.6   | 275.2  | 268.7 | 263.9   | 271.4 | 281.9  | 280.6   |
| 1993 | 275.2 | 265.3  | 264.7 | 278.5 | 280.5 | 277.3   | 271.0  | 261.1 | 253.6   | 249.9 | 255.6  | 270.2   |
| 1994 | 254.4 | 260.8  | 268.6 | 279.9 | 293.4 | 296.1   | 294.0  | 291.5 | 289.4   | 288.3 | 288.8  | 285.1   |
| 1995 | 253.8 | 260.3  | 262.5 | 275.3 | 289.0 | 288.7   | 284.5  | 282.2 | 288.2   | 283.8 | 279.9  | 287.5   |
| 1996 | 287.1 | 288.7  | 286.5 | 294.7 | 295.8 | 293.1   | 287.6  | 282.2 | 285.1   | 284.3 | 289.2  | 291.3   |
| 1997 | 289.4 | 284.5  | 281.7 | 285.2 | 294.1 | 292.0   | 287.0  | 280.0 | 272.9   | 272.4 | 270.8  | 277.2   |
| 1998 | 273.7 | 270.0  | 265.2 | 278.9 | 288.1 | 287.4   | 281.8  | 277.6 | 276.0   | 277.1 | 279.0  | 277.1   |
| 1999 | 272.7 | 275.6  | 281.5 | 290.5 | 295.9 | 293.3   | 288.3  | 279.5 | 271.0   | 257.6 | 263.6  | 276.9   |
| 2000 | 276.4 | 276.7  | 276.8 | 286.9 | 286.6 | 280.1   | 273.5  | 267.5 | 261.6   | 248.4 | 249.3  | 252.1   |
| 2001 | 253.6 | 258.2  | 275.1 | 282.9 | 287.6 | 283.8   | 273.7  | 271.1 | 269.2   | 263.6 | 263.2  | 252.1   |
| 2002 | 245.3 | 247.1  | 252.6 | 264.0 | 268.6 | 271.3   | 270.1  | 267.8 | 274.3   | 286.1 | 285.3  | 284.0   |
| 2003 | 291.1 | 289.5  | 286.3 | 287.0 | 292.3 | 290.3   | 285.9  | 280.8 | 276.0   | 282.6 | 285.6  | 283.3   |
| 2004 | 284.7 | 290.8  | 293.4 | 296.0 | 296.2 | 296.2   | 293.1  | 286.3 | 281.1   | 280.0 | 286.1  | 288.0   |
| 2005 | 281.2 | 281.5  | 293.3 | 296.1 | 295.6 | 294.1   | 286.7  | 277.2 | 266.5   | 256.9 | 253.6  | 279.0   |
| 2006 | 283.5 | 288.6  | 294.4 | 295.9 | 296.5 | 295.9   | 293.8  | 290.2 | 285.3   | 278.7 | 266.2  | 256.2   |
| 2007 | 256.1 | 263.7  | 272.0 | 276.8 | 276.8 | 274.8   | 268.5  | 263.6 | 261.8   | 261.1 | 275.8  | 282.1   |
| 2008 | 285.1 | 289.7  | 290.9 | 295.5 | 295.3 | 295.7   | 294.3  | 288.6 | 283.9   | 280.9 | 285.2  | 286.5   |
| 2009 | 283.6 | 281.8  | 283.4 | 292.5 | 293.7 | 292.4   | 288.0  | 281.2 | 276.2   | 271.6 | 266.3  | 280.1   |
| 2010 | 290.1 | 289.2  | 293.9 | 296.0 | 296.3 | 294.4   | 291.8  | 288.6 | 284.9   | 285.2 | 284.3  | 287.5   |
| 2011 | 281.6 | 274.1  | 275.0 | 276.6 | 281.0 | 286.1   | 284.7  | 279.0 | 273.9   | 268.2 | 261.6  | 264.5   |
| 2012 | 265.8 | 274.1  | 262.0 | 280.2 | 293.4 | 294.4   | 288.4  | 280.4 | 261.4   | 261.6 | 269.0  | 276.6   |
| 2013 | 278.3 | 274.1  | 294.8 | 296.9 | 296.9 | 294.2   | 289.7  | 283.6 | 280.8   | 281.4 | 282.5  | 276.1   |
| 2014 | 275.1 | 274.1  | 274.6 | 285.3 | 292.9 | 294.9   | 291.7  | 286.8 | 285.5   | 285.0 | 284.8  | 286.3   |
| 2015 | 288.7 | 274.1  | 292.2 | 296.3 | 296.1 | 293.3   | 287.5  | 280.1 | 272.1   | 275.4 | 278.9  | 275.9   |
| 2016 | 289.9 | 274.1  | 291.8 | 296.5 | 296.2 | 295.6   | 290.5  | 285.4 | 283.3   | 288.4 | 288.9  | 281.6   |
| 2017 | 271.5 | 274.1  | 280.9 | 278.7 | 281.6 | 272.4   | 270.2  | 268.0 | 271.0   | 264.6 | 269.6  | 289.9   |
| 2018 | 289.7 | 274.1  | 295.0 | 296.5 | 296.4 | 296.0   | 294.0  | 287.5 | 277.9   | 270.2 | 266.5  | 267.3   |
| 2019 | 267.3 | 274.1  | 272.7 | 279.9 | 289.9 | 292.7   | 287.6  | 278.5 | 274.2   | 268.6 | 273.2  | 275.6   |
| 2020 | 271.6 | 272.0  | 283.5 | 288.6 | 293.6 | 291.7   | 284.6  | 276.5 | 273.5   | 274.1 | 268.7  | 272.7   |
| 2021 | 291.7 | 294.1  | 292.6 | 294.3 | 296.7 | 291.7   | 282.7  | 274.3 | 271.3   | 267.7 | 267.8  | 275.1   |
| 2022 | 270.7 | 268.3  | 260.7 | 282.5 | 289.0 | 288.0   | 281.5  | 270.4 | 271.4   | 267.9 | 281.7  | 291.7   |
| 2023 | 293.2 | 286.4  | 291.5 | 295.6 | 296.1 | 296.3   |        |       |         |       |        |         |

|           | Janar  | Shkurt | Mars   | Prill  | Maj    | Qershor | Korrik | Gusht  | Shtator | Tetor  | Nentor | Dhjetor |
|-----------|--------|--------|--------|--------|--------|---------|--------|--------|---------|--------|--------|---------|
| 2023      | 293.16 | 286.40 | 291.47 | 295.55 | 296.11 | 296.33  |        |        |         |        |        |         |
| Mesatarja | 275.50 | 276.90 | 279.82 | 286.48 | 290.68 | 289.53  | 284.98 | 279.25 | 275.33  | 273.34 | 274.52 | 277.52  |
| Minimumi  | 245.3  | 247.1  | 252.6  | 264.0  | 268.6  | 271.3   | 270.1  | 261.1  | 253.6   | 248.4  | 249.3  | 252.1   |
| Maksimumi | 293.2  | 294.1  | 294.4  | 296.9  | 296.9  | 296.2   | 294.3  | 291.5  | 289.4   | 288.3  | 289.2  | 288.0   |

### NIVELI I FIERZES GJATE 2023 KRAHESUAR ME (Min,Maks dhe Mesataren historike) (m)



|                                      | 2012   |        | 2013   |        | 2014   |        | 2015   |        | 2016   |        | 2017   |        | 2018   |        | 2019   |        | 2020   |        | 2021   |        | 2022   |        | 2023   |        |
|--------------------------------------|--------|--------|--------|--------|--------|--------|--------|--------|--------|--------|--------|--------|--------|--------|--------|--------|--------|--------|--------|--------|--------|--------|--------|--------|
| Humbjet teknike ne nenshtatimet e T. | 18474  | 19441  | 18474  | 19441  | 18474  | 19441  | 18474  | 19441  | 18474  | 19441  | 18474  | 19441  | 18474  | 19441  | 18474  | 19441  | 18474  | 19441  | 18474  | 19441  | 18474  | 19441  | 18474  | 19441  |
| Humbjet teknike Totale               | 111515 | 115441 | 111515 | 115441 | 111515 | 115441 | 111515 | 115441 | 111515 | 115441 | 111515 | 115441 | 111515 | 115441 | 111515 | 115441 | 111515 | 115441 | 111515 | 115441 | 111515 | 115441 | 111515 | 115441 |
| Humbjet jo-teknike Totale            | 150538 | 156538 | 150538 | 156538 | 150538 | 156538 | 150538 | 156538 | 150538 | 156538 | 150538 | 156538 | 150538 | 156538 | 150538 | 156538 | 150538 | 156538 | 150538 | 156538 | 150538 | 156538 | 150538 | 156538 |
| Humbjet Totale                       | 262053 | 271979 | 262053 | 271979 | 262053 | 271979 | 262053 | 271979 | 262053 | 271979 | 262053 | 271979 | 262053 | 271979 | 262053 | 271979 | 262053 | 271979 | 262053 | 271979 | 262053 | 271979 | 262053 | 271979 |
| ENERGHI TOTAL NE OSHI                | 724973 | 826453 | 724973 | 826453 | 724973 | 826453 | 724973 | 826453 | 724973 | 826453 | 724973 | 826453 | 724973 | 826453 | 724973 | 826453 | 724973 | 826453 | 724973 | 826453 | 724973 | 826453 | 724973 | 826453 |

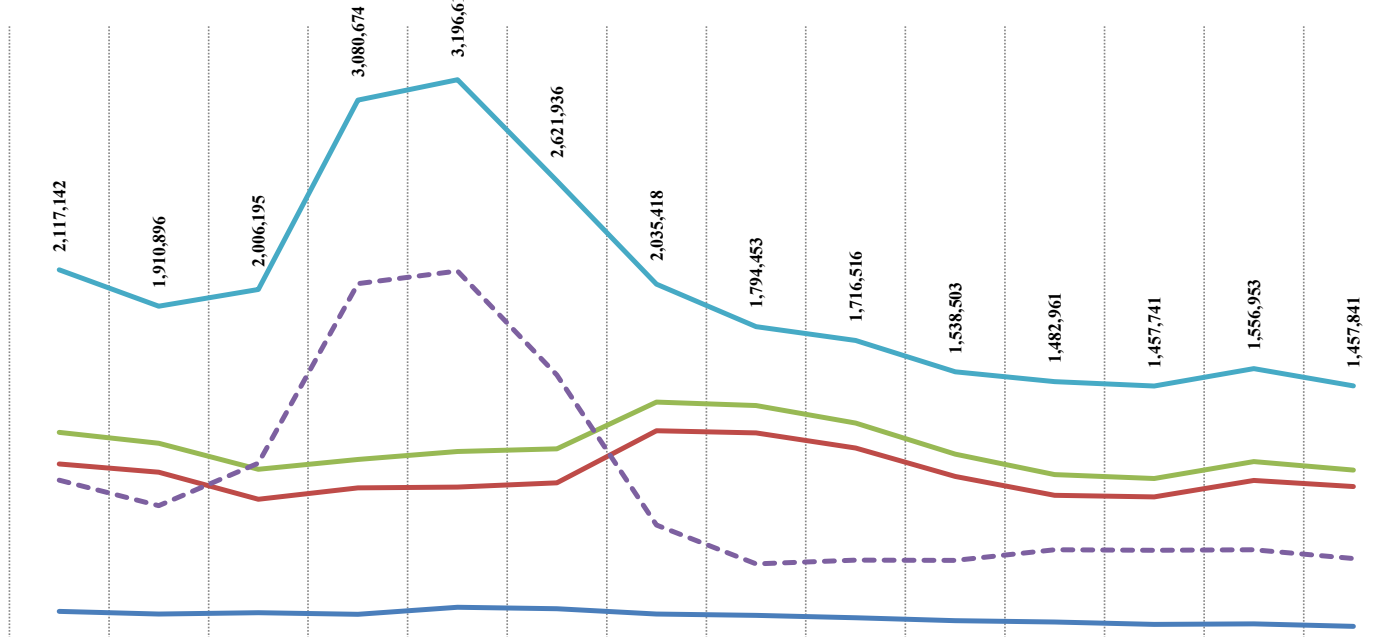


Barimi: OSHI sha / (OSHEE Group sha)

### HUMBJET NE RRJETIN E SHPERNDARJES 2009-2023(MWh) □

|                                | 2009      | 2010      | 2011      | 2012      | 2013      | 2014      | 2015      | 2016      | 2017      | 2018      | 2019      | 2020      | 2021      | 2022      | 2023 (8-M) |
|--------------------------------|-----------|-----------|-----------|-----------|-----------|-----------|-----------|-----------|-----------|-----------|-----------|-----------|-----------|-----------|------------|
| HUMBJE TEKNIKE NE TL (N/ST)    | 178,738   | 163,546   | 170,937   | 161,831   | 201,684   | 193,208   | 162,725   | 155,629   | 141,707   | 125,974   | 117,739   | 103,729   | 107,340   | 93,331    | 67,294     |
| HUMBJE TEKNIKE NE ZONAT E OSSH | 1,015,450 | 968,535   | 814,826   | 879,616   | 884,360   | 908,416   | 1,203,793 | 1,190,872 | 1,106,007 | 944,587   | 836,561   | 828,906   | 921,330   | 886,682   | 610,034    |
| TOTALI I HUMBJEVE TEKNIKE OSSH | 1,194,188 | 1,132,081 | 985,763   | 1,041,447 | 1,086,044 | 1,101,624 | 1,366,518 | 1,346,501 | 1,247,714 | 1,070,560 | 954,300   | 932,635   | 1,028,670 | 980,013   | 677,328    |
| HUMBJE JOTOKNIKE OSSH          | 922,954   | 778,815   | 1,020,432 | 2,039,227 | 2,110,575 | 1,520,312 | 668,900   | 447,952   | 468,802   | 467,943   | 528,661   | 525,106   | 528,283   | 477,828   | 302,653    |
| TOTALI I HUMBJEVE OSSH         | 2,117,142 | 1,910,896 | 2,006,195 | 3,080,674 | 3,196,618 | 2,621,936 | 2,035,418 | 1,794,453 | 1,716,516 | 1,538,503 | 1,482,961 | 1,457,741 | 1,556,953 | 1,457,841 | 979,981    |

### HUMBJET NE RRJETIN E SHPERNDARJES 2009-2022(MWh)



|                                | 2009      | 2010      | 2011      | 2012      | 2013      | 2014      | 2015      | 2016      | 2017      | 2018      | 2019      | 2020      | 2021      | 2022      |
|--------------------------------|-----------|-----------|-----------|-----------|-----------|-----------|-----------|-----------|-----------|-----------|-----------|-----------|-----------|-----------|
| HUMBJE TEKNIKE NE TL (N/ST)    | 178,738   | 163,546   | 170,937   | 161,831   | 201,684   | 193,208   | 162,725   | 155,629   | 141,707   | 125,974   | 117,739   | 103,729   | 107,340   | 93,331    |
| HUMBJE TEKNIKE NE ZONAT E OSSH | 1,015,450 | 968,535   | 814,826   | 879,616   | 884,360   | 908,416   | 1,203,793 | 1,190,872 | 1,106,007 | 944,587   | 836,561   | 828,906   | 921,330   | 886,682   |
| TOTALI I HUMBJEVE TEKNIKE OSSH | 1,194,188 | 1,132,081 | 985,763   | 1,041,447 | 1,086,044 | 1,101,624 | 1,366,518 | 1,346,501 | 1,247,714 | 1,070,560 | 954,300   | 932,635   | 1,028,670 | 980,013   |
| HUMBJE JOTOKNIKE OSSH          | 922,954   | 778,815   | 1,020,432 | 2,039,227 | 2,110,575 | 1,520,312 | 668,900   | 447,952   | 468,802   | 467,943   | 528,661   | 525,106   | 528,283   | 477,828   |
| TOTALI I HUMBJEVE OSSH         | 2,117,142 | 1,910,896 | 2,006,195 | 3,080,674 | 3,196,618 | 2,621,936 | 2,035,418 | 1,794,453 | 1,716,516 | 1,538,503 | 1,482,961 | 1,457,741 | 1,556,953 | 1,457,841 |

Burimi: OSSH sha / (OSHEE Group sha)



| FATURIM-ARKETIMET DHE NDRYSHIMI I GJENDJES DEBITORE GJTE VITIT 2020 (000/LEKE) |                |               |                              |                                   |                |   |   |                    |  |
|--|----------------|---------------|------------------------------|-----------------------------------|----------------|---|---|--------------------|--|
| Viti 2020  | Te arketueshme | Faturuar 2020 | arketimi per fakturat e 2020 | Arketimi per fakturat e 2007-2019 | Arketimi total | Te Arketueshme per energjine e faturuar ne vitin 2020 | Ndryshimi I gjendjes se Llogarive te arketueshme gjate vitit 2020 | Shuarje Detyrimesh |  |
|  | 72,573,657     | 2             | 5                            | 7                                 | 6=5+7          | 9=(2-5)   |   |                    |  |
| Janar  | 73,370,006     | 6,508,770     | 16,409                       | 5,696,013                         | 5,712,421      | 6,492,362   | 796,349   | 0                  |  |
| Shkurt   | 73,517,039     | 6,106,516     | 4,215,767                    | 1,743,716                         | 5,959,484      | 1,890,749   | 147,033   | 0                  |  |
| Mars   | 73,916,688     | 5,129,481     | 4,299,341                    | 430,490                           | 4,729,831      | 830,140   | 399,650   | 0                  |  |
| Prill  | 73,467,701     | 5,029,219     | 5,202,266                    | 275,941                           | 5,478,206      | 173,047   | 448,988   | 0                  |  |
| Maj  | 73,234,253     | 4,885,187     | 4,856,458                    | 262,176                           | 5,118,635      | 28,729  | 233,447   | 0                  |  |
| Qershor  | 73,005,446     | 4,763,565     | 4,633,611                    | 358,761                           | 4,992,372      | 129,954   | 228,807   | 0                  |  |
| Korrik   | 73,865,820     | 5,588,061     | 4,444,694                    | 282,993                           | 4,727,687      | 1,143,367   | 860,374   | 0                  |  |
| Gusht  | 74,144,786     | 5,606,760     | 5,058,892                    | 268,903                           | 5,327,794      | 547,868   | 278,966   | 0                  |  |
| Shtator  | 74,000,809     | 5,327,559     | 5,096,602                    | 374,935                           | 5,471,536      | 230,957   | 143,977   | 0                  |  |
| Tetor  | 73,790,738     | 5,174,314     | 5,025,382                    | 359,002                           | 5,384,384      | 148,932   | 210,070   | 0                  |  |
| Nentor   | 74,671,974     | 5,615,129     | 4,483,130                    | 250,764                           | 4,733,894      | 1,132,000   | 881,235   | 0                  |  |
| Dhjetor  | 75,609,639     | 6,641,071     | 5,412,845                    | 290,561                           | 5,703,406      | 1,228,226   | 937,665   | 0                  |  |
| Total  |                |               |                              |                                   |                |   |   |                    |  |

| FATURIM-ARKETIMET DHE NDRYSHIMI I GJENDJES DEBITORE GJTE VITIT 2021 (000/LEKE) |                |               |                              |                                   |                |   |   |                    |  |
|--|----------------|---------------|------------------------------|-----------------------------------|----------------|---|---|--------------------|--|
| Viti 2021  | Te arketueshme | Faturuar 2021 | arketimi per fakturat e 2021 | Arketimi per fakturat e 2007-2020 | Arketimi total | Te Arketueshme per energjine e faturuar ne vitin 2021 | Ndryshimi I gjendjes se Llogarive te arketueshme gjate vitit 2021 | Shuarje Detyrimesh |  |
|  | 75,609,639     | 2             | 5                            | 7                                 | 6=5+7          | 9=(2-5)   |   |                    |  |
| Janar  | 76,272,477     | 6,400,370     | 19,639                       | 5,717,893                         | 5,737,532      | 6,380,731   | 662,838   | 0                  |  |
| Shkurt   | 76,826,391     | 6,245,453     | 3,770,254                    | 1,921,284                         | 5,691,538      | 2,475,198   | 553,914   | 0                  |  |
| Mars   | 76,605,803     | 6,158,373     | 5,690,524                    | 688,438                           | 6,378,961      | 467,849   | 220,588   | 0                  |  |
| Prill  | 76,818,750     | 5,817,548     | 5,302,816                    | 301,785                           | 5,604,601      | 514,732   | 212,947   | 0                  |  |
| Maj  | 76,122,770     | 5,190,837     | 5,558,138                    | 328,680                           | 5,886,818      | 367,301   | 695,980   | 0                  |  |
| Qershor  | 75,924,651     | 5,548,298     | 5,417,458                    | 328,959                           | 5,746,417      | 130,840   | 198,119   | 0                  |  |
| Korrik   | 76,924,743     | 6,377,974     | 5,053,270                    | 324,612                           | 5,377,882      | 1,324,705   | 1,000,093   | 0                  |  |
| Gusht  | 77,478,064     | 6,554,952     | 5,648,400                    | 353,231                           | 6,001,630      | 906,552   | 553,321   | 0                  |  |
| Shtator  | 76,933,233     | 5,401,032     | 5,687,762                    | 258,102                           | 5,945,864      | 286,730   | 544,832   | 0                  |  |
| Tetor  | 76,284,525     | 5,544,032     | 5,739,826                    | 452,913                           | 6,192,739      | 195,794   | 648,707   | 0                  |  |
| Nentor   | 76,704,823     | 5,794,416     | 5,080,754                    | 293,364                           | 5,374,118      | 713,662   | 420,298   | 0                  |  |
| Dhjetor  | 78,394,397     | 7,572,744     | 5,583,186                    | 299,984                           | 5,883,170      | 1,989,557   | 1,689,574   | 0                  |  |
| Total  |                |               |                              |                                   |                |   |   |                    |  |

| FATURIM-ARKETIMET DHE NDRYSHIMI I GJENDJES DEBITORE GJTE VITIT 2022 (000/LEKE) |                |               |                              |                                   |                |   |   |                    |  |
|--|----------------|---------------|------------------------------|-----------------------------------|----------------|---|---|--------------------|--|
| Viti 2022  | Te arketueshme | Faturuar 2022 | arketimi per fakturat e 2022 | Arketimi per fakturat e 2007-2022 | Arketimi total | Te Arketueshme per energjine e faturuar ne vitin 2022 | Ndryshimi I gjendjes se Llogarive te arketueshme gjate vitit 2022 | Shuarje Detyrimesh |  |
|  | 78,394,397     | 2             | 5                            | 7                                 | 6=5+7          | 9=(2-5)   |   |                    |  |
| Janar  | 79,437,476     | 7,902,272     | 4,793,436                    | 2,065,757                         | 6,859,193      | 3,108,836   | 1,043,079   | 0                  |  |
| Shkurt   | 80,288,829     | 7,515,728     | 4,569,541                    | 2,094,835                         | 6,664,376      | 2,946,187   | 851,353   | 0                  |  |
| Mars   | 80,426,273     | 7,857,071     | 6,691,413                    | 1,028,214                         | 7,719,627      | 1,165,658   | 137,444   | 0                  |  |
| Prill  | 79,617,380     | 6,186,945     | 6,531,117                    | 464,721                           | 6,995,838      | 344,172   | 808,893   | 0                  |  |
| Maj  | 79,499,359     | 6,188,303     | 5,969,488                    | 336,836                           | 6,306,324      | 218,815   | 118,021   | 0                  |  |
| Qershor  | 79,997,520     | 6,553,744     | 5,610,349                    | 445,234                           | 6,055,583      | 943,395   | 498,162   | 0                  |  |
| Korrik   | 80,005,681     | 6,553,744     | 6,230,846                    | 314,737                           | 6,545,583      | 322,898   | 8,161   | 0                  |  |
| Gusht  | 79,791,653     | 7,358,491     | 7,103,150                    | 469,370                           | 7,572,519      | 255,341   | 214,028   | 0                  |  |
| Shtator  | 78,554,734     | 6,162,925     | 7,005,112                    | 394,733                           | 7,399,844      | 842,187   | 1,236,919   | 0                  |  |
| Tetor  | 77,962,798     | 5,848,663     | 6,104,850                    | 335,749                           | 6,440,598      | 256,187   | 591,935   | 0                  |  |
| Nentor   | 78,481,014     | 6,502,315     | 798,011                      | 5,186,087                         | 5,984,099      | 5,704,303   | 518,216   | 0                  |  |
| Dhjetor  | 79,249,438     | 7,458,986     | 6,200,688                    | 489,874                           | 6,690,562      | 1,258,298   | 768,423   | 0                  |  |
| Total  |                | 82,089,187    |                              |                                   | 81,234,146     |   |   |                    |  |

| FATURIM-ARKETIMET DHE NDRYSHIMI I GJENDJES DEBITORE GJTE VITIT 2023 (000/LEKE) |                |               |                              |                                   |                |   |   |                    |  |
|--|----------------|---------------|------------------------------|-----------------------------------|----------------|---|---|--------------------|--|
| Viti 2023  | Te arketueshme | Faturuar 2023 | arketimi per fakturat e 2023 | Arketimi per fakturat e 2007-2022 | Arketimi total | Te Arketueshme per energjine e faturuar ne vitin 2022 | Ndryshimi I gjendjes se Llogarive te arketueshme gjate vitit 2022 | Shuarje Detyrimesh |  |
|  | 79,910,252     | 2             | 5                            | 7                                 | 6=5+7          | 9=(2-5)   |   |                    |  |
| Janar  | 80,265,490     | 7,236,860     | 17,571                       | 6,864,050                         | 6,881,621      | 7,219,288   | 355,238   | 0                  |  |
| Shkurt   | 80,928,747     | 7,477,014     | 4,674,206                    | 2,139,553                         | 6,813,758      | 2,802,809   | 663,256   | 0                  |  |
| Mars   | 80,025,935     | 6,588,875     | 6,660,084                    | 831,603                           | 7,491,687      | 71,209  | 902,812   | 0                  |  |
| Prill  | 80,223,225     | 6,321,511     | 5,757,211                    | 367,010                           | 6,124,221      | 564,300   | 197,290   | 0                  |  |
| Maj  | 79,402,801     | 5,993,172     | 6,505,113                    | 308,483                           | 6,813,596      | 511,941   | 820,424   | 0                  |  |
| Qershor  | 79,665,073     | 6,074,125     | 5,550,743                    | 261,110                           | 5,811,853      | 523,382   | 262,272   | 0                  |  |
| Korrik   | 81,307,082     | 7,326,635     | 5,416,995                    | 267,632                           | 5,684,626      | 1,909,640   | 1,642,009   | 0                  |  |
| Gusht  | 81,148,340     | 7,281,460     | 6,976,104                    | 464,097                           | 7,440,201      | 305,356   | 158,741   | 0                  |  |
| Shtator  |                |               |                              |                                   |                |   |   |                    |  |
| Tetor  |                |               |                              |                                   |                |   |   |                    |  |
| Nentor   |                |               |                              |                                   |                |   |   |                    |  |
| Dhjetor  |                |               |                              |                                   |                |   |   |                    |  |
| Total  |                |               |                              |                                   |                |   |   |                    |  |

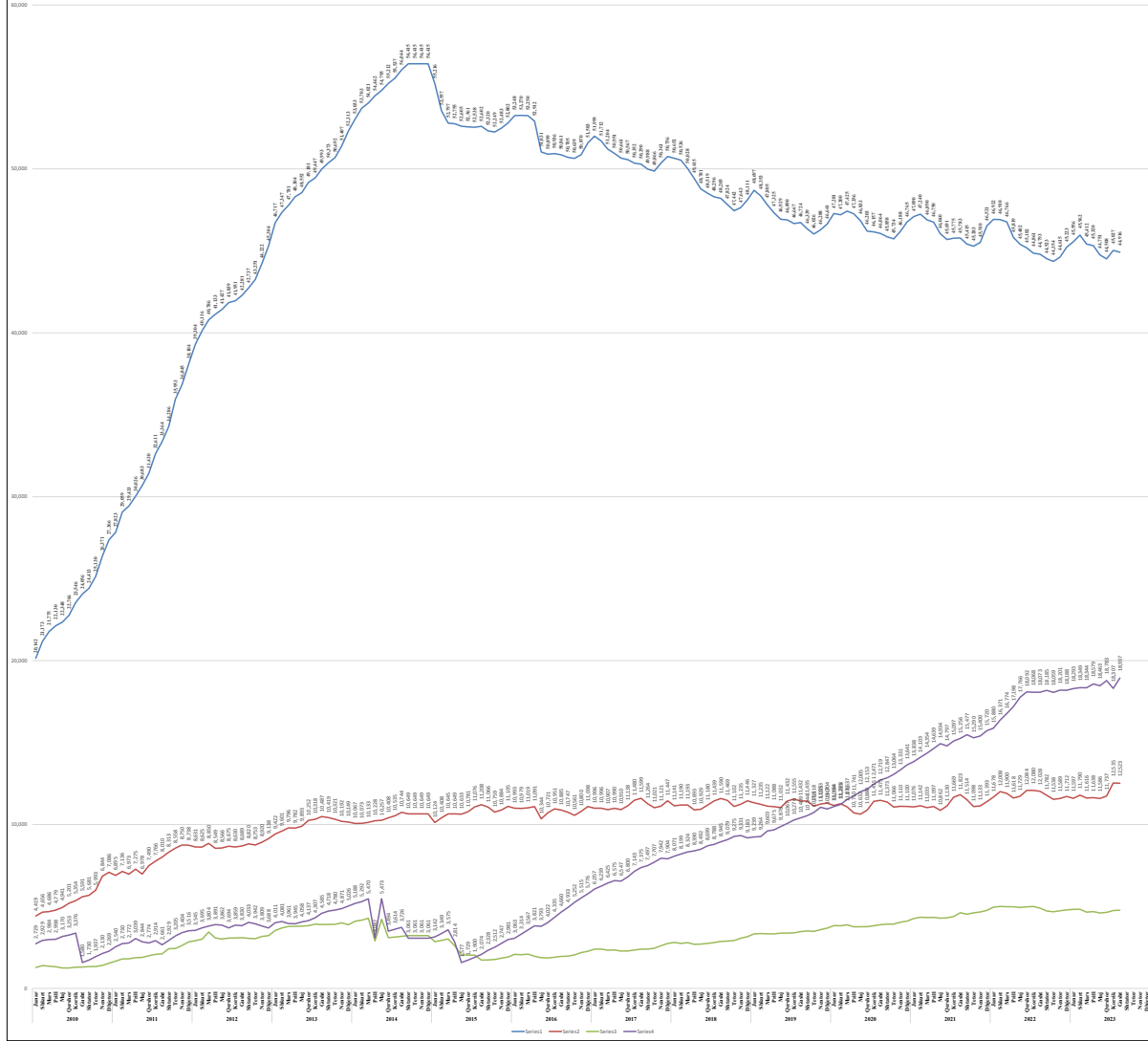
Burimi: FSHU sha / (OSHEE Group sha)



ECURIA E GJENDJES DEBITORE NDAJ OPERATORIT TË SHPËRNDARJES SIPAS KATEGORIVE 2010-2023 (000 000/LËKË)

| Kategoria  | 2010    | 2011    | 2012    | 2013    | 2014    | 2015    | 2016    | 2017    | 2018    | 2019    | 2020    | 2021    | 2022    | 2023    |
|------------|---------|---------|---------|---------|---------|---------|---------|---------|---------|---------|---------|---------|---------|---------|
| Mbështetje | 100,000 | 100,000 | 100,000 | 100,000 | 100,000 | 100,000 | 100,000 | 100,000 | 100,000 | 100,000 | 100,000 | 100,000 | 100,000 | 100,000 |
| Mbështetje | 100,000 | 100,000 | 100,000 | 100,000 | 100,000 | 100,000 | 100,000 | 100,000 | 100,000 | 100,000 | 100,000 | 100,000 | 100,000 | 100,000 |
| Mbështetje | 100,000 | 100,000 | 100,000 | 100,000 | 100,000 | 100,000 | 100,000 | 100,000 | 100,000 | 100,000 | 100,000 | 100,000 | 100,000 | 100,000 |

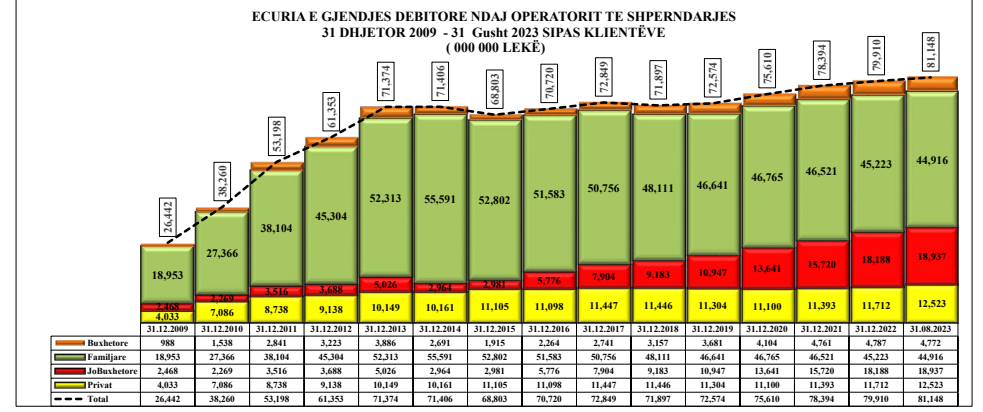
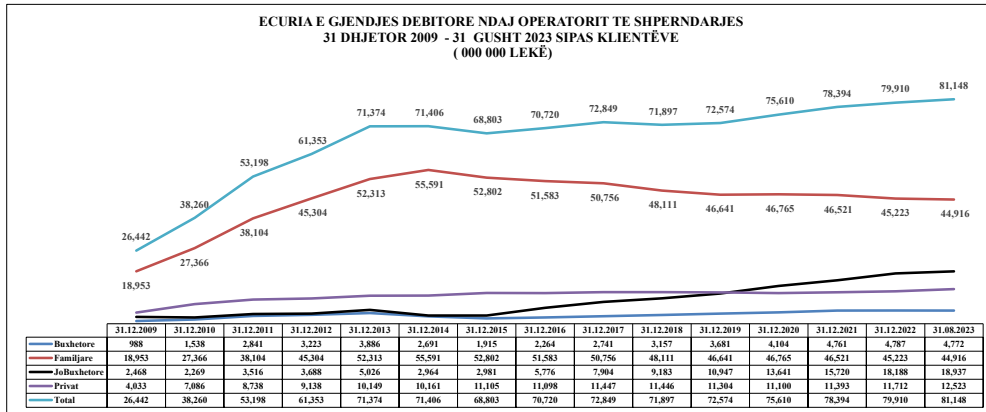
ECURIA E GJENDJES DEBITORE NDAJ OPERATORIT TË SHPËRNDARJES SIPAS KATEGORIVE 2010-2023 (000 000/LËKË)



Notat: FQBI dhe FQSHK Group Axi

|                    | 31.12.2009 | 31.12.2010 | 31.12.2011 | 31.12.2012 | 31.12.2013 | 31.12.2014 | 31.12.2015 | 31.12.2016 | 31.12.2017 | 31.12.2018 | 31.12.2019 | 31.12.2020 | 31.12.2021 | 31.12.2022 | 31.08.2023 |
|--------------------|------------|------------|------------|------------|------------|------------|------------|------------|------------|------------|------------|------------|------------|------------|------------|
| <b>Buxhetore</b>   | 988        | 1,538      | 2,841      | 3,223      | 3,886      | 2,691      | 1,915      | 2,264      | 2,741      | 3,157      | 3,681      | 4,104      | 4,761      | 4,787      | 4,772      |
| <b>Familjare</b>   | 18,953     | 27,366     | 38,104     | 45,304     | 52,313     | 55,591     | 52,802     | 51,583     | 50,756     | 48,111     | 46,641     | 46,765     | 46,521     | 45,223     | 44,916     |
| <b>Jobuxhetore</b> | 2,468      | 2,269      | 3,516      | 3,688      | 5,026      | 2,964      | 2,981      | 5,776      | 7,904      | 9,183      | 10,947     | 13,641     | 15,720     | 18,188     | 18,937     |
| <b>Privat</b>      | 4,033      | 7,086      | 8,738      | 9,138      | 10,149     | 10,161     | 11,105     | 11,098     | 11,447     | 11,446     | 11,304     | 11,100     | 11,393     | 11,712     | 12,523     |
| <b>Total</b>       | 26,442     | 38,260     | 53,198     | 61,353     | 71,374     | 71,406     | 68,803     | 70,720     | 72,849     | 71,897     | 72,574     | 75,610     | 78,394     | 79,910     | 81,148     |

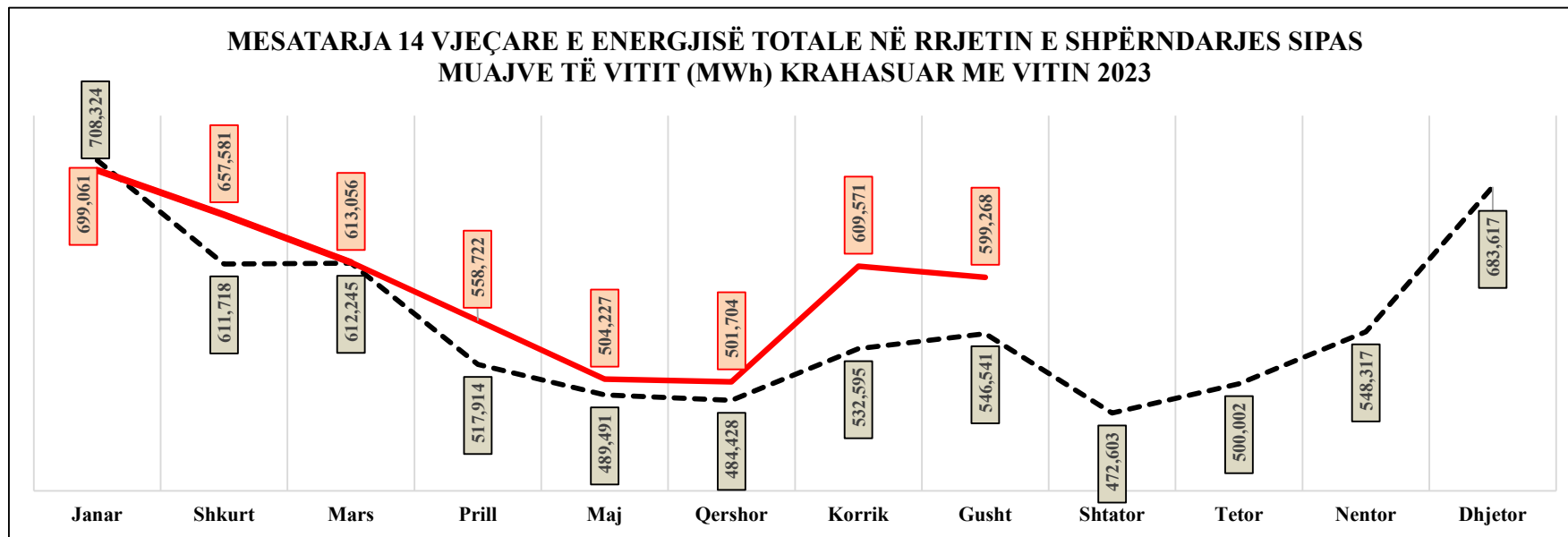
|                    | 31.12.2009 | 31.12.2010 | 31.12.2011 | 31.12.2012 | 31.12.2013 | 31.12.2014 | 31.12.2015 | 31.12.2016 | 31.12.2017 | 31.12.2018 | 31.12.2019 | 31.12.2020 | 31.12.2021 | 31.12.2022 | 31.08.2023 |
|--------------------|------------|------------|------------|------------|------------|------------|------------|------------|------------|------------|------------|------------|------------|------------|------------|
| <b>Privat</b>      | 4,033      | 7,086      | 8,738      | 9,138      | 10,149     | 10,161     | 11,105     | 11,098     | 11,447     | 11,446     | 11,304     | 11,100     | 11,393     | 11,712     | 12,523     |
| <b>Jobuxhetore</b> | 2,468      | 2,269      | 3,516      | 3,688      | 5,026      | 2,964      | 2,981      | 5,776      | 7,904      | 9,183      | 10,947     | 13,641     | 15,720     | 18,188     | 18,937     |
| <b>Familjare</b>   | 18,953     | 27,366     | 38,104     | 45,304     | 52,313     | 55,591     | 52,802     | 51,583     | 50,756     | 48,111     | 46,641     | 46,765     | 46,521     | 45,223     | 44,916     |
| <b>Buxhetore</b>   | 988        | 1,538      | 2,841      | 3,223      | 3,886      | 2,691      | 1,915      | 2,264      | 2,741      | 3,157      | 3,681      | 4,104      | 4,761      | 4,787      | 4,772      |
| <b>Total</b>       | 26,442     | 38,260     | 53,198     | 61,353     | 71,374     | 71,406     | 68,803     | 70,720     | 72,849     | 71,897     | 72,574     | 75,610     | 78,394     | 79,910     | 81,148     |



Burimi: FSHU/sha / (OSHEE Group/sha)

|      | Janar   | Shkurt  | Mars    | Prill   | Maj     | Qershor | Korrik  | Gusht   | Shtator | Tetor   | Nentor  | Dhjetor | VITI      |
|------|---------|---------|---------|---------|---------|---------|---------|---------|---------|---------|---------|---------|-----------|
| 2009 | 644,987 | 568,719 | 589,279 | 462,709 | 448,118 | 427,694 | 467,863 | 493,772 | 439,604 | 489,635 | 557,554 | 639,797 | 6,229,731 |
| 2010 | 675,343 | 608,940 | 610,583 | 506,275 | 476,500 | 464,120 | 499,241 | 512,024 | 460,893 | 509,793 | 532,126 | 660,665 | 6,516,503 |
| 2011 | 708,264 | 623,208 | 634,087 | 536,286 | 533,564 | 495,139 | 545,315 | 567,282 | 512,979 | 551,132 | 619,655 | 710,870 | 7,037,781 |
| 2012 | 733,973 | 680,054 | 596,982 | 537,950 | 483,891 | 489,723 | 536,891 | 540,566 | 469,527 | 484,706 | 548,289 | 749,398 | 6,851,949 |
| 2013 | 743,846 | 665,392 | 673,578 | 545,600 | 502,945 | 511390  | 546,696 | 565,789 | 493,056 | 532,555 | 589,808 | 774,403 | 7,145,060 |
| 2014 | 733,468 | 631,678 | 645,837 | 578,948 | 541,016 | 501088  | 530,554 | 556,098 | 492,427 | 537,280 | 546,419 | 640,431 | 6,935,244 |
| 2015 | 686,041 | 591,978 | 594,775 | 514,282 | 472,405 | 465730  | 536160  | 529208  | 459012  | 476969  | 519281  | 649026  | 6,494,867 |
| 2016 | 671,884 | 559,772 | 573,419 | 469,803 | 477,468 | 463248  | 509916  | 514034  | 451153  | 480236  | 540024  | 688760  | 6,399,717 |
| 2017 | 715,886 | 562,270 | 545,214 | 493,731 | 475,055 | 485,386 | 529,805 | 543,145 | 451,103 | 482,629 | 546256  | 667841  | 6,498,322 |
| 2018 | 659,778 | 590,823 | 597,595 | 468,417 | 467,468 | 468,885 | 508,892 | 539,134 | 465,468 | 471,407 | 517,882 | 681,162 | 6,436,911 |
| 2019 | 735,813 | 586,992 | 559,331 | 500,485 | 501,061 | 500,729 | 533,842 | 565,788 | 471,684 | 472,833 | 507,920 | 639,953 | 6,576,432 |
| 2020 | 708,611 | 607,803 | 589,581 | 489,236 | 464,183 | 463,789 | 527,801 | 533,336 | 482,358 | 506,280 | 562,127 | 669,977 | 6,605,082 |
| 2021 | 724,554 | 629,962 | 662,183 | 590,810 | 504,970 | 519,563 | 591,485 | 603,872 | 485,288 | 523,606 | 552,840 | 747,790 | 7,136,936 |
| 2022 | 774,084 | 656,456 | 698,991 | 556,264 | 504,224 | 525,509 | 591,875 | 587,527 | 481,886 | 480,961 | 536,263 | 650,564 | 7,044,604 |
| 2023 | 699,061 | 657,581 | 613,056 | 558,722 | 504,227 | 501,704 | 609,571 | 599,268 |         |         |         |         |           |

|           | Janar   | Shkurt  | Mars    | Prill   | Maj     | Qershor | Korrik  | Gusht   | Shtator | Tetor   | Nentor  | Dhjetor |
|-----------|---------|---------|---------|---------|---------|---------|---------|---------|---------|---------|---------|---------|
| Mesatarja | 708,324 | 611,718 | 612,245 | 517,914 | 489,491 | 484,428 | 532,595 | 546,541 | 472,603 | 500,002 | 548,317 | 683,617 |
| 2023      | 699,061 | 657,581 | 613,056 | 558,722 | 504,227 | 501,704 | 609,571 | 599,268 |         |         |         |         |



Burimi OSHEE sha

| NIVELI I HUMBJEVE (%) 2009-2023 |       |        |       |       |       |         |        |       |         |       |        |         |       |
|---------------------------------|-------|--------|-------|-------|-------|---------|--------|-------|---------|-------|--------|---------|-------|
|                                 | Janar | Shkurt | Mars  | Prill | Maj   | Qershor | Korrik | Gusht | Shtator | Tetor | Nentor | Dhjetor |       |
| 2009                            | 40.75 | 37.05  | 38.05 | 32.93 | 33.44 | 30.75   | 32.60  | 30.20 | 25.34   | 30.67 | 33.44  | 36.89   |       |
| 2010                            | 38.62 | 35.41  | 36.90 | 31.37 | 35.17 | 31.45   | 26.94  | 29.69 | 21.47   | 20.61 | 22.16  | 29.05   |       |
| 2011                            | 55.55 | 38.00  | 36.95 | 23.11 | 24.85 | 21.29   | 21.88  | 19.41 | 22.95   | 25.15 | 32.20  | 35.70   |       |
| 2012                            | 35.72 | 59.16  | 55.23 | 45.41 | 38.87 | 39.77   | 45.51  | 45.51 | 42.09   | 35.53 | 41.89  | 49.32   |       |
| 2013                            | 51.12 | 48.71  | 48.29 | 39.66 | 39.52 | 40.33   | 43.33  | 38.50 | 35.08   | 45.98 | 48.08  | 53.04   |       |
| 2014                            | 47.00 | 42.14  | 42.78 | 35.69 | 36.85 | 34.10   | 36.59  | 36.36 | 31.67   | 34.52 | 32.88  | 37.54   |       |
| 2015                            | 36.68 | 31.82  | 32.88 | 30.54 | 31.24 | 28.60   | 30.62  | 29.29 | 25.30   | 29.92 | 30.82  | 34.50   |       |
| 2016                            | 34.69 | 29.00  | 29.93 | 26.07 | 26.97 | 24.35   | 25.97  | 25.15 | 22.12   | 27.11 | 29.30  | 30.99   |       |
| 2017                            | 33.50 | 27.63  | 28.66 | 25.81 | 25.88 | 28.31   | 24.69  | 23.29 | 19.79   | 23.76 | 23.55  | 27.90   | 26.41 |
| 2018                            | 30.65 | 24.91  | 27.22 | 23.33 | 23.03 | 20.76   | 21.46  | 20.77 | 19.32   | 21.53 | 22.73  | 26.70   | 23.9  |
| 2019                            | 29.25 | 23.21  | 26.5  | 21.36 | 22.10 | 19.92   | 20.42  | 19.81 | 17.54   | 20.40 | 21.58  | 24.76   | 21.79 |
| 2020                            | 28.22 | 21.61  | 28.36 | 17.39 | 19.10 | 18.65   | 19.69  | 18.87 | 16.80   | 21.21 | 22.79  | 20.49   | 21.48 |
| 2021                            | 27.87 | 20.1   | 25.92 | 21.08 | 17.92 | 18.34   | 18.75  | 17.93 | 16.22   | 18.56 | 19.88  | 20.25   | 20.62 |
| 2022                            | 28.42 | 19.66  | 23.68 | 18.24 | 17.08 | 17.30   | 18.42  | 16.81 | 14.94   | 18.36 | 18.38  | 19.76   | 19.70 |
| 2023                            | 25.79 | 19.06  | 21.05 | 18.65 | 16.68 | 16.04   | 17.48  | 16.17 |         |       |        |         | 19.15 |

| Niveli i Arketimeve (%) 2009-2023 |        |        |        |       |        |         |        |        |         |        |        |         |       |
|-----------------------------------|--------|--------|--------|-------|--------|---------|--------|--------|---------|--------|--------|---------|-------|
|                                   | Janar  | Shkurt | Mars   | Prill | Maj    | Qershor | Korrik | Gusht  | Shtator | Tetor  | Nentor | Dhjetor |       |
| 2009                              | 69.32  | 85.95  | 74.38  | 86.58 | 86.31  | 76.37   | 75.40  | 72.46  | 83.20   | 80.82  | 61.77  | 70.01   |       |
| 2010                              | 55.37  | 66.28  | 86.63  | 89.46 | 86.70  | 79.42   | 74.84  | 124.98 | 84.20   | 70.81  | 56.15  | 66.48   |       |
| 2011                              | 67.26  | 57.61  | 87.66  | 71.61 | 96.73  | 73.00   | 65.00  | 81.00  | 66.00   | 63.86  | 51.47  | 87.30   |       |
| 2012                              | 59.80  | 79.20  | 78.50  | 78.00 | 94.70  | 83.50   | 91.60  | 102.90 | 74.00   | 98.00  | 72.60  | 78.00   |       |
| 2013                              | 61.40  | 63.70  | 86.20  | 80.70 | 79.10  | 69.60   | 87.90  | 90.10  | 78.50   | 84.30  | 89.00  | 102.00  |       |
| 2014                              | 84.90  | 77.10  | 85.90  | 85.50 | 81.90  | 80.20   | 86.70  | 83.60  | 102.60  | 101.00 | 101.90 | 141.00  |       |
| 2015                              | 112.70 | 120.50 | 103.70 | 86.60 | 95.70  | 97.10   | 98.40  | 104.70 | 95.30   | 100.30 | 92.20  | 100.70  |       |
| 2016                              | 92.10  | 87.00  | 95.60  | 90.10 | 99.10  | 92.00   | 94.20  | 96.70  | 91.50   | 96.70  | 90.30  | 96.70   |       |
| 2017                              | 85.20  | 87.60  | 105.70 | 94.50 | 105.70 | 91.80   | 104.80 | 97.40  | 94.60   | 103.80 | 92.70  | 100.10  | 96.6  |
| 2018                              | 96.39  | 95.69  | 105.82 | 98.92 | 111.64 | 100.16  | 105.00 | 102.12 | 93.03   | 108.76 | 96.24  | 108.94  | 101.6 |
| 2019                              | 90.7   | 92.6   | 99.8   | 102.4 | 102.50 | 94.00   | 104.40 | 99.30  | 93.90   | 104.70 | 89.60  | 110.70  | 98.4  |
| 2020                              | 91.4   | 91.6   | 77.5   | 106.8 | 101.80 | 102.20  | 96.80  | 95.30  | 96.60   | 101.10 | 91.50  | 101.80  | 95.8  |
| 2021                              | 86.4   | 88.9   | 102.1  | 91    | 101.20 | 110.70  | 96.90  | 94.10  | 90.70   | 114.70 | 96.90  | 101.50  | 97.4  |
| 2022                              | 90.6   | 84.3   | 102.7  | 90.5  | 98.00  | 97.90   | 99.90  | 105.00 | 100.60  | 104.50 | 102.30 | 102.90  | 98.0  |
| 2023                              | 92.3   | 94.2   | 100.2  | 92.9  | 113.7  | 95.70   | 93.60  | 101.60 |         |        |        |         | 97.4  |

| Efektiviteti i shitjeve (%) 2009-2022 |       |        |       |       |       |         |        |       |         |       |        |         |       |
|---------------------------------------|-------|--------|-------|-------|-------|---------|--------|-------|---------|-------|--------|---------|-------|
|                                       | Janar | Shkurt | Mars  | Prill | Maj   | Qershor | Korrik | Gusht | Shtator | Tetor | Nentor | Dhjetor |       |
| 2009                                  | 41.1% | 46.8%  | 53.6% | 57.9% | 50.8% | 52.2%   | 48.8%  | 50.6% | 62.1%   | 56.0% | 41.1%  | 44.2%   |       |
| 2010                                  | 34.0% | 56.0%  | 56.4% | 59.5% | 51.5% | 51.3%   | 91.3%  | 87.9% | 66.1%   | 56.2% | 43.7%  | 47.2%   |       |
| 2011                                  | 29.9% | 54.3%  | 45.2% | 74.4% | 54.9% | 51.2%   | 63.3%  | 65.3% | 50.9%   | 47.8% | 34.9%  | 56.1%   |       |
| 2012                                  | 38.4% | 32.1%  | 34.9% | 51.7% | 51.0% | 55.2%   | 56.1%  | 56.1% | 42.9%   | 63.2% | 42.2%  | 39.5%   |       |
| 2013                                  | 30.0% | 44.2%  | 41.7% | 47.7% | 42.1% | 52.4%   | 51.1%  | 55.4% | 51.0%   | 45.5% | 46.2%  | 47.9%   |       |
| 2014                                  | 45.0% | 49.7%  | 48.9% | 52.7% | 50.6% | 57.1%   | 53.0%  | 53.2% | 70.1%   | 66.1% | 68.4%  | 88.1%   |       |
| 2015                                  | 71.4% | 69.6%  | 60.2% | 65.8% | 69.3% | 68.3%   | 72.6%  | 74.0% | 71.2%   | 70.3% | 63.8%  | 66.0%   |       |
| 2016                                  | 60.2% | 67.0%  | 66.6% | 72.4% | 69.6% | 69.7%   | 71.6%  | 72.4% | 71.3%   | 70.5% | 63.8%  | 66.7%   |       |
| 2017                                  | 56.7% | 75.4%  | 70.1% | 78.3% | 65.8% | 78.9%   | 73.4%  | 74.7% | 75.9%   | 79.1% | 70.9%  | 72.2%   | 71.1% |

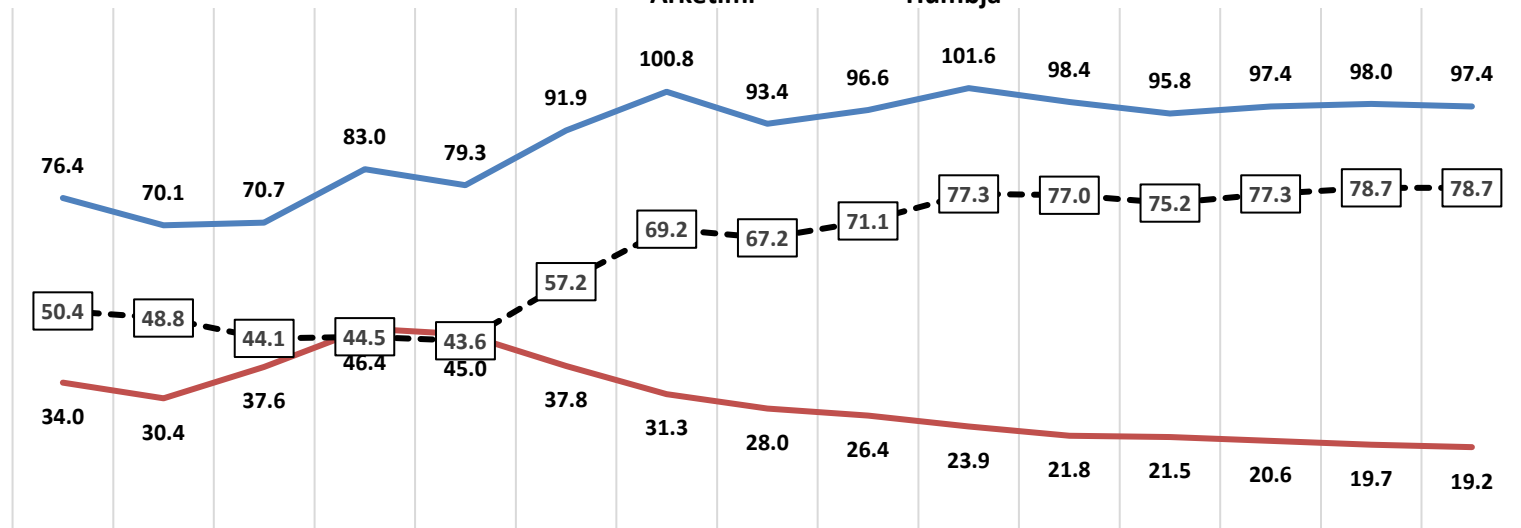
|      |       |       |       |       |       |       |       |       |       |       |       |       |       |
|------|-------|-------|-------|-------|-------|-------|-------|-------|-------|-------|-------|-------|-------|
| 2018 | 66.8% | 77.0% | 75.8% | 85.9% | 79.4% | 82.5% | 80.2% | 80.9% | 75.1% | 85.3% | 74.4% | 79.9% | 77.3% |
| 2019 | 64.2% | 73.4% | 80.5% | 79.8% | 75.3% | 83.1% | 79.0% | 79.6% | 77.4% | 83.3% | 70.3% | 83.3% | 77.0% |
| 2020 | 65.6% | 55.5% | 88.2% | 82.4% | 83.1% | 77.7% | 76.5% | 77.3% | 80.4% | 79.7% | 70.6% | 80.9% | 75.2% |
| 2021 | 62.3% | 75.6% | 71.8% | 83.1% | 90.4% | 78.7% | 76.5% | 77.2% | 76.0% | 93.4% | 77.6% | 80.9% | 77.3% |
| 2022 | 64.9% | 78.4% | 74.0% | 81.3% | 81.0% | 81.5% | 85.7% | 87.3% | 85.6% | 85.3% | 83.5% | 82.6% | 78.7% |
| 2023 | 68.5% | 76.2% | 79.1% | 75.6% | 94.7% | 80.3% | 77.2% | 85.2% | 0.0%  | 0.0%  | 0.0%  | 0.0%  | 78.7% |

|              | 2009 | 2010 | 2011 | 2012 | 2013 | 2014 | 2015  | 2016 | 2017 | 2018  | 2019 | 2020 | 2021 | 2022 | 2023(8-m) |
|--------------|------|------|------|------|------|------|-------|------|------|-------|------|------|------|------|-----------|
| Arketimi     | 76.4 | 70.1 | 70.7 | 83.0 | 79.3 | 91.9 | 100.8 | 93.4 | 96.6 | 101.6 | 98.4 | 95.8 | 97.4 | 98.0 | 97.4      |
| Humbja       | 34.0 | 30.4 | 37.6 | 46.4 | 45.0 | 37.8 | 31.3  | 28.0 | 26.4 | 23.9  | 21.8 | 21.5 | 20.6 | 19.7 | 19.2      |
| Efektiviteti | 50.4 | 48.8 | 44.1 | 44.5 | 43.6 | 57.2 | 69.2  | 67.2 | 71.1 | 77.3  | 77.0 | 75.2 | 77.3 | 78.7 | 78.7      |

## Efektiviteti i shitjeve ne Sistemin e Shperndarjes (%)

2009-2023

Arketimi Humbja



Burimi FSHU (OSHEE Group sha)

**ALOKIMI KAPACITETEVE 2023**

| Ankandi               | Periudha              | Shqiperi - Mali Zi |        |                 |              |                |        | Shqiperi - Greqi       |        |                        |              |                |        | Shqiperi - Kosove      |        |                        |              |                |        |     |     |     |     |      |      |
|-----------------------|-----------------------|--------------------|--------|-----------------|--------------|----------------|--------|------------------------|--------|------------------------|--------------|----------------|--------|------------------------|--------|------------------------|--------------|----------------|--------|-----|-----|-----|-----|------|------|
|                       |                       | ATC e ofruar ne    |        | ATC e shitur ne |              | Cmimi Ankandit |        | ATC e ofruar ne Ankand |        | ATC e shitur ne Ankand |              | Cmimi Ankandit |        | ATC e ofruar ne Ankand |        | ATC e shitur ne Ankand |              | Cmimi Ankandit |        |     |     |     |     |      |      |
|                       |                       | Export             | Import | Export          | Import       | Export         | Import | Export                 | Import | Export                 | Import       | Export         | Import | Export                 | Import | Export                 | Import       | Export         | Import |     |     |     |     |      |      |
| [ MW ]                | [ MW ]                | [ MW ]             | [ MW ] | [ Euro/MWh ]    | [ Euro/MWh ] | [ MW ]         | [ MW ] | [ MW ]                 | [ MW ] | [ Euro/MWh ]           | [ Euro/MWh ] | [ MW ]         | [ MW ] | [ MW ]                 | [ MW ] | [ Euro/MWh ]           | [ Euro/MWh ] |                |        |     |     |     |     |      |      |
| Janar                 | 01.01.2023-31.01.2023 | 150                | 100    | 150             | 100          | 3.14           | 1.62   | 200                    | 150    | 200                    | 150          | 3.05           | 3.55   | 200                    | 200    | 200                    | 200          | 1.28           | 0.92   |     |     |     |     |      |      |
| Shkurt                | 01.02.2023-28.02.2023 | 100                | 100    | 100             | 100          | 4.5            | 3.58   | 200                    | 100    | 200                    | 100          | 10.33          | 3.5    | 200                    | 200    | 200                    | 200          | 2.1            | 1.21   |     |     |     |     |      |      |
| Mars                  | 01.03.2023-05.03.2023 | 100                | 100    | 100             | 100          | 2.77           | 2.21   | 200                    | 200    | 200                    | 200          | 8.22           | 0.63   | 200                    | 200    | 200                    | 200          | 1.44           | 0.88   |     |     |     |     |      |      |
|                       | 06.03.2023-10.03.2023 | 50                 | 50     | 50              | 50           | 4.44           | 3.88   | 100                    | 100    | 98                     | 97           | 8.22           | 0.63   |                        |        |                        |              |                |        |     |     |     |     |      |      |
| Prill                 | 11.03.2023-31.03.2023 | 100                | 100    | 100             | 100          | 2.77           | 2.21   | 200                    | 200    | 200                    | 200          | 8.22           | 0.63   | 200                    | 200    | 200                    | 200          | 1.21           | 0.91   |     |     |     |     |      |      |
|                       | 01.04.2023-02.04.2023 | 100                | 100    | 100             | 100          | 2.91           | 1.2    | 200                    | 200    | 200                    | 200          | 6.98           | 1.24   |                        |        |                        |              |                |        |     |     |     |     |      |      |
|                       | 02.04.2023-03.04.2023 |                    |        |                 |              |                |        | 50                     | 50     | 48                     | 47           | 1.21           | 0.91   |                        |        |                        |              |                |        |     |     |     |     |      |      |
|                       | 03.04.2023-04.04.2023 |                    |        |                 |              |                |        | 100                    | 100    | 97                     | 99           | 6.98           | 1.24   |                        |        |                        |              |                |        |     |     |     |     |      |      |
|                       | 04.04.2023-04.04.2023 |                    |        |                 |              |                |        | 50                     | 50     | 49                     | 49           | 2.91           | 1.2    |                        |        |                        |              |                |        | 200 | 200 | 200 | 200 | 6.98 | 1.24 |
|                       | 05.04.2023-11.04.2023 |                    |        |                 |              |                |        | 200                    | 200    | 200                    | 200          | 6.98           | 1.24   |                        |        |                        |              |                |        |     |     |     |     |      |      |
|                       | 12.04.2023-17.04.2023 |                    |        |                 |              |                |        | 50                     | 50     | 49                     | 49           | 2.91           | 1.2    |                        |        |                        |              |                |        | 200 | 200 | 200 | 200 | 6.98 | 1.24 |
|                       | 18.04.2023-18.04.2023 |                    |        |                 |              |                |        | 100                    | 100    | 100                    | 100          | 2.91           | 1.2    |                        |        |                        |              |                |        | 50  | 45  | 200 | 200 | 6.98 | 1.24 |
| 19.04.2023-19.04.2023 | 200                   |                    |        |                 |              |                |        | 200                    | 200    | 200                    | 6.98         | 1.24           |        |                        |        |                        |              |                |        |     |     |     |     |      |      |
| 20.04.2023-28.04.2023 | 100                   | 100                | 100    | 100             | 2.91         | 1.2            | 50     | 45                     | 200    | 200                    | 6.98         | 1.24           |        |                        |        |                        |              |                |        |     |     |     |     |      |      |
| 29.04.2023-30.04.2023 | 50                    | 200                | 46     | 200             | 1.55         | 0.9            | 0      | 0                      | 0      | 0                      | 7.50         | 0.58           | 200    | 200                    | 200    | 199                    | 0.14         | 0.08           |        |     |     |     |     |      |      |
| 01.05.2023-01.05.2023 | 100                   | 100                | 100    | 100             |              |                | 50     | 200                    | 46     | 200                    |              |                |        |                        |        |                        |              |                |        |     |     |     |     |      |      |
| 02.05.2023-06.05.2023 | 0                     | 0                  | 0      | 0               |              |                | 50     | 200                    | 46     | 200                    |              |                |        |                        |        |                        |              |                |        |     |     |     |     |      |      |
| 07.05.2023-21.05.2023 | 200                   | 200                | 200    | 200             |              |                | 200    | 200                    | 200    | 200                    |              |                |        |                        |        |                        |              |                |        |     |     |     |     |      |      |
| 22.05.2023-31.05.2023 | 100                   | 100                | 100    | 100             | 2.31         | 1.75           | 200    | 200                    | 200    | 200                    | 10.00        | 0.66           | 200    | 200                    | 200    | 200                    | 0.88         | 0.64           |        |     |     |     |     |      |      |

**Disbalancat mujore [MWh] 2023 (8-MUJORI)**

| Pale Pergjegjese Balancuese                  | JANAR                |                        | SHKURT               |                        | MARS                 |                        | PRILL                |                        | MAJ                  |                        | QERSHOR              |                        | KORRIK               |                        | GUSHT                |                        | 8-MUJORI 2023        |                        |
|--|----------------------|------------------------|----------------------|------------------------|----------------------|------------------------|----------------------|------------------------|----------------------|------------------------|----------------------|------------------------|----------------------|------------------------|----------------------|------------------------|----------------------|------------------------|
|  | Dis. Negative [MWh]  | Dis. Positive [MWh]    | Dis. Negative [MWh]  | Dis. Positive [MWh]    | Dis. Negative [MWh]  | Dis. Positive [MWh]    | Dis. Negative [MWh]  | Dis. Positive [MWh]    | Dis. Negative [MWh]  | Dis. Positive [MWh]    | Dis. Negative [MWh]  | Dis. Positive [MWh]    | Dis. Negative [MWh]  | Dis. Positive [MWh]    | Dis. Negative [MWh]  | Dis. Positive [MWh]    | Dis. Negative [MWh]  | Dis. Positive [MWh]    |
| KURUM INTERNATIONAL                          | 923                  | 304                    | 257                  | 22                     | 210                  | 26                     | 535                  | 278                    | 1,338                | 259                    | 988                  | 296                    | 216                  | 71                     | 193                  | 182                    | 4,660                | 1,438                  |
| DEVOLL HP                                    | 14                   | 45                     | 31                   | 43                     | 17                   | 65                     | 23                   | 51                     | 24                   | 62                     | 26                   | 53                     | 66                   | 135                    | 14                   | 25                     | 216                  | 479                    |
| DRAGOBIA ENERGY                              | 2                    | 64                     | 1                    | 60                     | 3                    | 89                     | 3                    | 105                    | 75                   | 137                    | 8                    | 161                    | 7                    | 95                     | 1                    | 59                     | 100                  | 771                    |
| GEN-I  |                      |                        |                      |                        |                      |                        |                      | 31                     | 43                   |                        |                      |                        | 2                    |                        |                      |                        | 45                   | 31                     |
| ENER TRADE                                   | 970                  | 225                    | 542                  | 182                    | 761                  | 554                    | 1,132                | 218                    | 1,295                | 281                    | 995                  | 516                    | 1,094                | 405                    | 1,168                | 331                    | 7,956                | 2,712                  |
| ENERGY 24                                    | 121                  | 215                    | 118                  | 150                    | 132                  | 270                    | 177                  | 339                    |                      |                        |                      |                        |                      |                        |                      |                        | 548                  | 974                    |
| NOA  | 107                  | 2                      | 63                   | 20                     | 196                  | 116                    | 393                  | 480                    | 279                  | 636                    | 209                  | 446                    | 417                  | 241                    | 345                  | 216                    | 2,009                | 2,156                  |
| AYEN AS ENERGJI                              | 306                  | 125                    | 144                  | 75                     | 140                  | 115                    | 85                   | 80                     | 132                  | 69                     | 88                   | 74                     | 82                   | 115                    | 82                   | 28                     | 1,058                | 679                    |
| GSA  | 125                  | 1,641                  | 760                  | 151                    | 1,681                | 490                    | 1,499                | 30                     | 1,871                | 173                    | 1,945                | 94                     | 4,465                | 24                     | 2,971                | 257                    | 15,318               | 2,860                  |
| Furnizuesi i Tregut të Lirë FTL (OSHEE Grup) | 5,671                | 27,980                 | 3,452                | 26,029                 | 6,621                | 24,823                 | 6,634                | 24,902                 | 6,236                | 11,822                 | 3,977                | 15,316                 | 4,815                | 15,569                 | 2,879                | 14,061                 | 40,284               | 160,503                |
| KESH (Pale Pergjegjese Balancuese)           | 3,574                | 2,150                  | 761                  | 1,797                  | 349                  | 3,128                  | 702                  | 2,801                  | 756                  | 1,936                  | 2,740                | 1,822                  | 580                  | 1,512                  | 1,049                | 1,211                  | 10,511               | 16,357                 |
| EZ-5 ENERGY                                  | 126                  | 126                    | 178                  | 45                     | 288                  | 110                    | 221                  | 182                    | 291                  | 224                    | 344                  | 139                    | 268                  | 42                     | 238                  | 50                     | 1,952                | 916                    |
| KOSTT  | 12,947               | 2,032                  | 10,885               | 2,448                  | 9,005                | 4,090                  | 8,371                | 4,996                  | 5,256                | 6,941                  | 2,938                | 7,811                  | 6,288                | 5,525                  | 6,940                | 4,124                  | 62,631               | 37,967                 |
| KOSTT  | 1,322                | 2,661                  | 332                  | 2,987                  | 1,975                | 1,457                  | 1,117                | 1,616                  | 1,781                | 1,933                  | 1,285                | 863                    | 2,326                | 655                    | 1,680                | 1,314                  | 11,818               | 13,487                 |
| Ofruesi i Sherbimit te Balancimit            | Ulje Gjenerimi [MWh] | Rrrije Gjenerimi [MWh] | Ulje Gjenerimi [MWh] | Rrrije Gjenerimi [MWh] | Ulje Gjenerimi [MWh] | Rrrije Gjenerimi [MWh] | Ulje Gjenerimi [MWh] | Rrrije Gjenerimi [MWh] | Ulje Gjenerimi [MWh] | Rrrije Gjenerimi [MWh] | Ulje Gjenerimi [MWh] | Rrrije Gjenerimi [MWh] | Ulje Gjenerimi [MWh] | Rrrije Gjenerimi [MWh] | Ulje Gjenerimi [MWh] | Rrrije Gjenerimi [MWh] | Ulje Gjenerimi [MWh] | Rrrije Gjenerimi [MWh] |
| Devoll HP Energjia Akt                       |                      |                        |                      |                        |                      |                        | 2                    |                        |                      |                        |                      |                        | 6                    | 42                     |                      |                        | 6                    | 44                     |
| Devoll HP Energjia Shtese Akt                |                      |                        |                      |                        |                      |                        |                      |                        | 15                   | 5                      |                      |                        | 3                    |                        |                      |                        | -                    | 3                      |
| KURUM INTERNATIONAL Energjia Akt             |                      |                        |                      |                        |                      |                        |                      |                        |                      |                        |                      |                        |                      |                        |                      |                        | 15                   | 5                      |
| Ayen AS Energji Energjia Akt                 |                      |                        | 170                  |                        | 319                  |                        | 84                   |                        | 197                  |                        |                      |                        |                      |                        |                      |                        | 770                  | -                      |
| Ayen AS Energji Energjia Shtese Akt          |                      |                        |                      |                        |                      |                        |                      |                        |                      |                        |                      |                        |                      |                        |                      |                        | -                    | -                      |
| KESH sh.a. Energjia Akt                      | 10,340               | 4,943                  | 11,233               | 3,901                  | 9,882                | 7,363                  | 10,554               | 5,985                  | 7,702                | 5,204                  | 9,165                | 2,640                  | 8,014                | 6,865                  | 7,242                | 6,156                  | 74,132               | 43,057                 |
| KESH sh.a. Energjia Shtese Akt               | 9,453                | 3,510                  | 8,201                | 3,047                  | 7,597                | 2,608                  | 7,992                | 2,857                  | 3,209                | 1,629                  | 3,904                | 798                    | 2,114                | 1,593                  | 2,274                | 350                    | 44,743               | 16,391                 |
| <b>TOTALI</b>                                | <b>46,000</b>        | <b>46,023</b>          | <b>37,129</b>        | <b>40,957</b>          | <b>39,177</b>        | <b>45,304</b>          | <b>39,520</b>        | <b>44,951</b>          | <b>30,501</b>        | <b>31,310</b>          | <b>28,612</b>        | <b>31,030</b>          | <b>30,760</b>        | <b>32,892</b>          | <b>27,075</b>        | <b>28,364</b>          | <b>278,774</b>       | <b>300,831</b>         |
| <b>Disbalancat mujore [MWh]</b>              |                      | <b>23</b>              |                      | <b>3,828</b>           |                      | <b>6,127</b>           |                      | <b>5,431</b>           |                      | <b>809</b>             |                      | <b>2,418</b>           |                      | <b>2,133</b>           |                      | <b>1,289</b>           |                      | <b>22,057</b>          |

| KLIENDET NE TL               | KLIENDET E "KUALIFIKUAR" PER VITIN 2023 |        |        |        |        |         |        |        |         |       |        |         |         |
|------------------------------|---|--------|--------|--------|--------|---------|--------|--------|---------|-------|--------|---------|---------|
|                              | Energjia e faturuar ne [MWh]            |        |        |        |        |         |        |        |         |       |        |         | 2023    |
|                              | Janar                                   | Shkurt | Mars   | Prill  | Maj    | Qershor | Korrik | Gusht  | Shtator | Tetor | Nentor | Dhjetor |         |
| EL220-L220KURUM/337          | 17,724                                  | 3,540  | 1,712  | 15,407 | 33,141 | 30,601  | 3,313  | 3,339  |         |       |        |         | 108,777 |
| Titan T1,T2                  | 9,331                                   | 4,543  | 7,006  | 10,642 | 11,097 | 10,636  | 11,282 | 10,350 |         |       |        |         | 74,887  |
| FUSHE KRUIJE 220kV-T2/058    | -                                       | 409    | 3,878  | 1,910  | 2,903  | 1,997   | 8,346  | 2,418  |         |       |        |         | 21,860  |
| N/ST 220/6,3Colacent-T1/336  | 631                                     | 910    | 2,421  | 1,371  | 1,130  | 2,168   | 1,619  | 216    |         |       |        |         | 10,465  |
| N/ST i GSA EL 110kV-T1/694   | 10,555                                  | 15,188 | -      | -      | -      | -       | -      | -      |         |       |        |         | 25,742  |
| N/ST i GSA EL 110kV-T2/960   | -                                       | 219    | 15,779 | 16,873 | 17,440 | 16,979  | 17,438 | 17,030 |         |       |        |         | 101,758 |
| N/ST I CWI Albania T1/148    | 477                                     | 464    | 469    | 574.19 | 516    | 484     | 162    | 294    |         |       |        |         | 3,440   |
| N/ST i AES EL 110kV-T1/690   | 30                                      | 48     | -      | -      | 1,491  | 6,969   | 7,274  | 7,290  |         |       |        |         | 23,103  |
| N/ST I AES EL 110kV-T2/692   | 111                                     | 84     | 1,175  | 6,722  | 5,719  | -       | -      | 6      |         |       |        |         | 13,816  |
| HEC Moglice T1,T2,T3         | 1                                       | 2      | 3      | 1      | 2.29   | 2       | 0.6    | 0.9    |         |       |        |         | 13      |
| HEC Peshqesh-T1/633          | 7                                       | 20     | 4      | 3.52   | 6      | 20      | 31     | 32     |         |       |        |         | 125     |
| Lajthiza T1/742              | 19                                      | 61     | 1      | 0.77   | 8      | 138     | 448    | 381    |         |       |        |         | 1,056   |
| HEC Ashta1-T1,HEC Ashta2-T1, | 0.13                                    | -      | -      | 0.00   | -      | -       | -      | 0.00   |         |       |        |         | 0       |
| HEC Banje T1,T2              | 14                                      | 14     | 18     | 15     | 25     | 18      | 21     | 18     |         |       |        |         | 143     |
| HEC Fang-T1,T2.              | 10                                      | 27     | 19     | 36     | 34     | 48      | 52     | 47     |         |       |        |         | 272     |
| Gjenerim KURUM               | 9.11                                    | 0      | 1      | 16.25  | 0.93   | 7       | 8      | 47     |         |       |        |         | 89      |
| FERRO KROM-F1,F2,F3,F4       | 60                                      | 57     | 200    | 6,272  | 6,528  | 6,474   | 7,038  | 6,969  |         |       |        |         | 33,597  |
| <b>TOTAL</b>                 | 38,979                                  | 25,586 | 32,684 | 59,843 | 80,042 | 76,540  | 57,032 | 48,438 |         |       |        |         | 419,142 |

Burimi: OST sha



### Devijimet nga programi interkoneksionit 2023 (6-mujori)

| Data         | Minus = Hyrje |              | Plus = Dalje |              |              |              |        |       |         |       |        |         | 2023          |
|--------------|---------------|--------------|--------------|--------------|--------------|--------------|--------|-------|---------|-------|--------|---------|---------------|
|              | Janar         | Shkurt       | Mars         | Prill        | Maj          | Qershor      | Korrik | Gusht | Shtator | Tetor | Nentor | Dhjetor |               |
| 1            | 94            | -18          | 44           | 54           | 165          | 120          |        |       |         |       |        |         | 459           |
| 2            | 156           | 93           | 189          | 297          | 37           | 166          |        |       |         |       |        |         | 938           |
| 3            | -25           | 202          | 54           | 105          | 168          | 108          |        |       |         |       |        |         | 613           |
| 4            | 0             | 92           | -47          | -74          | 77           | 200          |        |       |         |       |        |         | 249           |
| 5            | 126           | 57           | -57          | 65           | 251          | 303          |        |       |         |       |        |         | 745           |
| 6            | 69            | 10           | 85           | -33          | 73           | 199          |        |       |         |       |        |         | 402           |
| 7            | -18           | -185         | 256          | 49           | 271          | 28           |        |       |         |       |        |         | 399           |
| 8            | 8             | 31           | 213          | 114          | 200          | 203          |        |       |         |       |        |         | 769           |
| 9            | 7             | 147          | 52           | -20          | -9           | 108          |        |       |         |       |        |         | 284           |
| 10           | 482           | 268          | 400          | -64          | 76           | 10           |        |       |         |       |        |         | 1,171         |
| 11           | -26           | 8            | 997          | 206          | 7            | 122          |        |       |         |       |        |         | 1,314         |
| 12           | 131           | -3           | 410          | 192          | 63           | 36           |        |       |         |       |        |         | 830           |
| 13           | 128           | 200          | 267          | 214          | -82          | 233          |        |       |         |       |        |         | 960           |
| 14           | -1,084        | 805          | 67           | 465          | -91          | 337          |        |       |         |       |        |         | 499           |
| 15           | -41           | 143          | -621         | 221          | 477          | 123          |        |       |         |       |        |         | 302           |
| 16           | -1,634        | 194          | 40           | 142          | 363          | 440          |        |       |         |       |        |         | -455          |
| 17           | 738           | 280          | 13           | -16          | 131          | 646          |        |       |         |       |        |         | 1,792         |
| 18           | 213           | 166          | 182          | 326          | 150          | 527          |        |       |         |       |        |         | 1,563         |
| 19           | 682           | 337          | 157          | 360          | 3            | 323          |        |       |         |       |        |         | 1,862         |
| 20           | 787           | 155          | 199          | 155          | 25           | -8           |        |       |         |       |        |         | 1,313         |
| 21           | 259           | 4            | 243          | 591          | 18           | -196         |        |       |         |       |        |         | 919           |
| 22           | 138           | -292         | 164          | 303          | 103          | -694         |        |       |         |       |        |         | -277          |
| 23           | 234           | 74           | 252          | 357          | 194          | -1,971       |        |       |         |       |        |         | -861          |
| 24           | 587           | 189          | 102          | 280          | -15          | 54           |        |       |         |       |        |         | 1,197         |
| 25           | -134          | 142          | 222          | 567          | 256          | 267          |        |       |         |       |        |         | 1,319         |
| 26           | -30           | 459          | 202          | 477          | 121          | -37          |        |       |         |       |        |         | 1,192         |
| 27           | 139           | 873          | 302          | 392          | 141          | 90           |        |       |         |       |        |         | 1,937         |
| 28           | 25            | 134          | 493          | 289          | 384          | 576          |        |       |         |       |        |         | 1,901         |
| 29           | -246          | 0            | 27           | 79           | 136          | 225          |        |       |         |       |        |         | 221           |
| 30           | 98            | 0            | 223          | 406          | 158          | 212          |        |       |         |       |        |         | 1,098         |
| 31           | 118           | 0            | 396          | 0            | 51           | 0            |        |       |         |       |        |         | 565           |
| <b>Total</b> | <b>1,983</b>  | <b>4,564</b> | <b>5,524</b> | <b>6,498</b> | <b>3,904</b> | <b>2,747</b> |        |       |         |       |        |         | <b>25,220</b> |

Burimi OST sha







| Blerje KESH sipas VKM 757 |               |         |       |          |       |      |               |
|---------------------------|---------------|---------|-------|----------|-------|------|---------------|
| Shoqëria                  | Perioda       | Statusi | Sasia | Çmimi    | Vlera | TVSH | Vlera me TVSH |
|                           |               |         | MWh   | Euro/MWh | Euro  | Euro | Euro          |
| Janar                     | 01-31.01.2023 | Blerje  | -     | -        | -     | -    | -             |
| Shkurt                    | 01-28.02.2023 | Blerje  | -     | -        | -     | -    | -             |
| Mars                      | 01-31.03.2023 | Blerje  | -     | -        | -     | -    | -             |
| Priill                    | 01-30.04.2023 | Blerje  | -     | -        | -     | -    | -             |
| Maj                       | 01-31.05.2023 | Blerje  | -     | -        | -     | -    | -             |
| Qershor                   | 01-30.06.2023 | Blerje  | -     | -        | -     | -    | -             |
| <b>TOTALE</b>             |               |         | -     | -        | -     | -    | -             |

| TOTALI I SHITJEVE PER OPTIMIZIM TE PORTOFOLIT EKONOMIK TE SHOQERISE KESH S.H.A.            |               |            |                   |                  |                   |      |      |
|--|---------------|------------|-------------------|------------------|-------------------|------|------|
| Statusi  | Sasia         | Çmimi      | Vlera             | TVSH             | Vlera me TVSH     |      |      |
|  | MWh           | Euro/MWh   | Euro              | Euro             | Euro              | Euro | Euro |
| Shitje energji elektrike me procedurën bazuar në rregullimin e Tregimit Janar-Qershor 2023 | 6,000         | 87         | 520,288           | 104,058          | 624,346           | -    | -    |
| Shitje energji elektrike për kushtet KOST Janar-Qershor 2023                               | -             | -          | -                 | -                | -                 | -    | -    |
| Shitje energji elektrike për ofrim shërbimesh ndihmëse KOST Janar-Qershor 2023             | 15,100        | 188        | 2,844,088         | -                | 2,844,088         | -    | -    |
| Shitje energji elektrike për ofrim shërbimesh ndihmëse OST Janar-Qershor 2023              | 44,404        | 169        | 7,502,737         | 1,500,547        | 9,003,284         | -    | -    |
| Shitje energji elektrike TIC Vlera për kushtet Janar-Qershor 2023                          | 209           | 148        | 30,960            | 6,192            | 37,152            | -    | -    |
| <b>TOTALI Janar-Qershor 2023</b>   | <b>65,714</b> | <b>166</b> | <b>10,898,473</b> | <b>1,616,797</b> | <b>12,569,270</b> | -    | -    |

| TIMIZIM TE PORTOFOLIT EKONOMIK TE SHOQERISE KESH S.H.A.                                    |                    |               |                      |                     |                      |      |      |
|--|--------------------|---------------|----------------------|---------------------|----------------------|------|------|
| Statusi  | Sasia              | Çmimi         | Vlera                | TVSH                | Vlera me TVSH        |      |      |
|  | MWh                | Euro/MWh      | Euro                 | Euro                | Euro                 | Euro | Euro |
| Blerje energji elektrike me procedurën bazuar në rregullimin e Tregimit Janar-Qershor 2023 | -                  | -             | -                    | -                   | -                    | -    | -    |
| Blerje energji elektrike për ofrim shërbimesh ndihmëse KOST Janar-Qershor 2023             | -                  | -             | -                    | -                   | -                    | -    | -    |
| Blerje energji elektrike për ofrim shërbimesh ndihmëse OST Janar-Qershor 2023              | (99,372)           | 9             | (869,340)            | (173,868)           | (1,043,208)          | -    | -    |
| Blerje energji elektrike nga HEC ASHTA, sipas marrëveshjes kontraktit                      | -                  | -             | -                    | -                   | -                    | -    | -    |
| <b>TOTALI</b>  | <b>(99,372)</b>    | <b>9</b>      | <b>(869,340)</b>     | <b>(173,868)</b>    | <b>(1,043,208)</b>   | -    | -    |
| <b>EFEKTI FINANCIAR NGA OPTIMIZIMI I SHITJES DHE BLERJES</b>                               | <b>(33,577,26)</b> | <b>156,90</b> | <b>10,029,132,83</b> | <b>1,436,928,97</b> | <b>11,466,061,40</b> | -    | -    |

| Shitje ne kushtet e prurjeve te medha |               |                   |              |                      |      |      |      |
|---------------------------------------|---------------|-------------------|--------------|----------------------|------|------|------|
| Shoqëria                              | Perioda       | Sasia             | Çmimi        | Vlera                |      |      |      |
|                                       |               | MWh               | Euro/MWh     | Euro                 | Euro | Euro | Euro |
| Janar                                 | 01-31.01.2023 | 135,690.00        | 109.01       | 14,792,103.12        | -    | -    | -    |
| Shkurt                                | 01-28.02.2023 | 40,686.00         | 95.79        | 3,897,117.32         | -    | -    | -    |
| Mars                                  | 01-31.03.2023 | -                 | -            | -                    | -    | -    | -    |
| Priill                                | 01-30.04.2023 | -                 | -            | -                    | -    | -    | -    |
| Maj                                   | 01-31.05.2023 | 215,137.00        | 62.80        | 13,509,555.03        | -    | -    | -    |
| Qershor                               | 01-30.06.2023 | 96,024.00         | 85.68        | 8,227,773.12         | -    | -    | -    |
| <b>TOTALE</b>                         | <b>Shitje</b> | <b>487,537.00</b> | <b>82.92</b> | <b>40,426,548.59</b> | -    | -    | -    |

| E DETAJUAR SIPAS SHOQERIVE          |                  |                      |                     |                   |                      |           |
|-------------------------------------|------------------|----------------------|---------------------|-------------------|----------------------|-----------|
| Shoqëritë                           | Sasia (MWh)      | EUR/MWh              | Vlera               | TVSH              | Vlera me TVSH        |           |
|                                     | Janar 2023       | 627                  | 58.58               | 36,729.66         | 7,345.93             | 44,075.59 |
| ReNRGY Trading Group                | 1,023            | 41.99                | 42,955.77           | 8,591.15          | 51,546.92            |           |
| AYEN Energy Trading                 | 57,381           | 131.18               | 7,527,516.29        | 1,505,503.26      | 9,033,019.55         |           |
| GSA                                 | 27,458           | 82.36                | 2,258,698.00        | 451,739.60        | 2,710,437.60         |           |
| Tirana International Development    | 3,600            | 112.35               | 404,460.00          | 80,892.00         | 485,352.00           |           |
| Danske Commodities Albania          | 13,199           | 121.38               | 1,602,095.50        | 320,419.10        | 1,922,514.60         |           |
| GEN4 Tirana                         | 29,700           | 91.54                | 2,718,804.00        | -                 | 2,718,804.00         |           |
| EFT AG                              | 432              | 82.35                | 35,573.60           | -                 | 35,573.60            |           |
| Fuente                              | 2,270            | 72.81                | 165,270.30          | -                 | 165,270.30           |           |
| ReNRGY Trading Group SR Beograd     | 109.01           | 14,792.103.12        | 2,374,491.04        | -                 | 17,166,594.16        |           |
| <b>TOTALE</b>                       | <b>109.01</b>    | <b>14,792,103.12</b> | <b>2,374,491.04</b> | <b>-</b>          | <b>17,166,594.16</b> |           |
| Shkurt 2023                         | 696              | 35.35                | 24,603.60           | 4,920.72          | 29,524.32            |           |
| ReNRGY Trading Group                | 1,800            | 41.62                | 74,916.00           | 14,983.20         | 89,899.20            |           |
| EZ-5 Energy shpk                    | 2,636            | 45.00                | 120,990.96          | 24,198.19         | 145,189.15           |           |
| GSA                                 | 3,600            | 41.00                | 147,600.00          | 29,520.00         | 177,120.00           |           |
| Tirana International Development    | 8,250            | 93.15                | 768,487.50          | 153,697.50        | 922,185.00           |           |
| Danske Commodities Albania          | 6,030            | 119.54               | 720,825.30          | 144,165.06        | 864,990.36           |           |
| GEN4 Tirana                         | 17,590           | 115.71               | 2,035,298.00        | -                 | 2,035,298.00         |           |
| EFT AG                              | 84               | 52.33                | 4,395.96            | -                 | 4,395.96             |           |
| Fuente                              | 95.79            | 3,897,117.32         | 371,484.67          | -                 | 4,268,601.99         |           |
| <b>TOTALE</b>                       | <b>40,686.00</b> | <b>95.79</b>         | <b>3,897,117.32</b> | <b>371,484.67</b> | <b>4,268,601.99</b>  |           |
| Mars 2023                           | -                | -                    | -                   | -                 | -                    |           |
| Priill 2023                         | -                | -                    | -                   | -                 | -                    |           |
| Maj 2023                            | 2,640            | 79.40                | 209,616.00          | -                 | 209,616.00           |           |
| Duferco Hellas S.A                  | 10,740           | 75.24                | 808,110.00          | 161,622.00        | 969,732.00           |           |
| NOA Energy Trade sh.p.k             | 1,143            | 63.18                | 72,219.97           | -                 | 72,221.57            |           |
| Future Energy Trading&Exchange Dyna | 69,966           | 56.79                | 3,973,381.42        | -                 | 3,973,381.42         |           |
| EFT(AG)                             | 25,500           | 64.67                | 1,655,476.00        | 331,095.20        | 1,986,571.20         |           |
| Info-Telecom sh.p.k                 | 4,360            | 68.02                | 296,568.00          | 59,313.60         | 355,881.60           |           |
| AYEN Energy Trading sh.a            | 21,000           | 61.60                | 1,293,600.00        | 258,720.00        | 1,552,320.00         |           |
| GSA Shpk                            | 672              | 70.41                | 47,315.52           | 9,463.10          | 56,778.62            |           |
| EZ-5 ENERGY sh.p.k                  | 2856             | 71.77                | 204,975.12          | -                 | 204,975.12           |           |
| ReNRGY Trading Group SR d.o.o Beogr | 43,680           | 67.13                | 2,932,423.20        | 586,484.64        | 3,518,907.84         |           |
| Danske Commodities Albania          | 31,500           | 62.00                | 1,953,000.00        | 390,600.00        | 2,343,600.00         |           |
| Tirana International Development    | 480              | 60.15                | 28,872.00           | 5,774.40          | 34,646.40            |           |
| Gen-I Tirana                        | -                | -                    | 13,509,555.03       | 1,809,872.50      | 15,319,427.53        |           |
| <b>TOTALE</b>                       | <b>109,01</b>    | <b>14,792,103.12</b> | <b>2,374,491.04</b> | <b>-</b>          | <b>17,166,594.16</b> |           |
| Qershor 2023                        | 960              | 90.00                | 86,400.00           | -                 | 86,400.00            |           |
| Duferco Hellas s.a.                 | 49,440           | 74.85                | 3,700,550.40        | -                 | 3,700,550.40         |           |
| EFT AG                              | 336              | 101.57               | 34,127.52           | 6,825.50          | 40,953.02            |           |
| EZ-5 Energy sh.p.k                  | 8,424            | 76.67                | 645,364.00          | 129,172.80        | 774,536.80           |           |
| GEN4 Tirana sh.p.k.                 | 26,640           | 105.44               | 2,808,799.20        | 561,759.84        | 3,370,559.04         |           |
| GSA shpk                            | 10,224           | 93.12                | 952,032.00          | 190,406.40        | 1,142,438.40         |           |
| Info Telecom sh.p.k                 | -                | -                    | -                   | -                 | -                    |           |
| <b>TOTALE</b>                       | <b>96,024.00</b> | <b>85.68</b>         | <b>8,227,773.12</b> | <b>888,164.54</b> | <b>9,115,937.66</b>  |           |

**Registri Kombetar REMIT Shqiperi**

| Nr. | Vendi    | Kodi i ECRB          | Data e paraqitjes | Emri Ligjor i Kompanisë                     | Forma Ligjore | Adresa e Kompanisë (Zyrtar Qendrore)  | Oqyteti ku ndodhet Kompania | ZIP Code | Kodi EIC i Kompanisë | Kodi BIC i Kompanisë                     | Kodi LEI i Kompanisë  | NIPT i Kompanisë | Website i kompanisë  | Webpage ku janë publikuar informacionet e brendshme   |  |
|-----|----------|----------------------|-------------------|---|---------------|---|-----------------------------|----------|----------------------|--|-----------------------|------------------|--|---|--|
| 1   | Shqipëri | ECRB-AL-20220105-001 | 05.01.2022        | GSA   | SHPK          | Njësia Bashkiake Nr.5 Rr. Ibrahim Rugova 64   | Tirane                      | 1019     | 22YGSA N             | SCSBALTX                                 |                       | 161820031J       | <a href="http://www.gsa.al">www.gsa.al</a>                               | <a href="http://www.gsa.al">www.gsa.al</a>  |  |
| 2   | Shqipëri | ECRB-AL-20220225-001 | 25.02.2022        | GEN-I Tirana                                | SHPK          | Ish-Noli Business center, Rr. Ismail Qemali Nr. 27  | Tirane                      | 1000     | 23X-120709GEO        | SCSBALTX                                 |                       | K81413005A       | <a href="https://www.gen-1.com">https://www.gen-1.com</a>                | <a href="https://www.gen-1.com">https://www.gen-1.com</a>   |  |
| 3   | Shqipëri | ECRB-AL-20220216-001 | 16.02.2022        | AlbEco Trading & Consulting                 | SHPK          | Rruga "Vaso Pasha" Nr. 20   | Tirane                      | 1001     | 54X-1-10101AESPF     | SCSBALTX                                 |                       | M12210081        | <a href="http://www.albestic.al">www.albestic.al</a>                     | <a href="http://www.albestic.al">www.albestic.al</a>  |  |
| 4   | Shqipëri | ECRB-AL-20220601-001 | 01.06.2022        | Korovista Elektroenergetike Shqiptare       | SHA           | Rruga "Vlora Elimiti"   | Tirane                      | 1023     | 23X-130918APC-M      | SCSBALTX                                 |                       | 161817005F       | <a href="http://www.kesh.al">www.kesh.al</a>                             | <a href="http://www.kesh.al">www.kesh.al</a>  |  |
| 5   | Shqipëri | ECRB-AL-20220224-001 | 24.02.2022        | KSA Energy Trade                            | SHPK          | Bukurosh "Dëshmorët e Kombit" Kullat binake kati 2  | Tirane                      | 1001     | 23X-150630-N-6       | SCSBALTX                                 |                       | 14220031A        | <a href="http://www.koeneros.al">www.koeneros.al</a>                     |   |  |
| 6   | Shqipëri | ECRB-AL-20220224-001 | 25.02.2022        | Operatori te Sistemit te Transmetimit       | SHA           | Autostrada Tirane-Durres KM 9 Kashar  | Tirane                      | 1051     | 10XAL-KESH J         | SCSBALTX                                 |                       | K42101801N       | <a href="http://www.ost.al">www.ost.al</a>                               | <a href="http://www.ost.al/itc-ffina/">www.ost.al/itc-ffina/</a>  |  |
| 7   | Shqipëri | ECRB-AL-20220218-001 | 18.02.2022        | INFO-Telcom                                 | SHPK          | Rruga "Fak Konica" Nr1 Pallati ius perball fakultetit ekonomik                                      | Tirane                      | 1001     | 54X-1-1100-ENFT J    | SCSBALTX                                 |                       | K92402002P       | <a href="http://www.infotelcom.al">www.infotelcom.al</a>                 |   |  |
| 8   | Shqipëri | ECRB-AL-20210712-001 | 12.07.2021        | ENRGY Trading Group                         | SHPK          | Rruga "Dervish Himë" Nr1 Tirane   | Tirane                      | 1010     | 54X-1018N102618K     | SCSBALTX                                 |                       | 181818026N       | <a href="http://www.enrgy.com">www.enrgy.com</a>                         | <a href="http://www.enrgy.com">www.enrgy.com</a>  |  |
| 9   | Shqipëri | ECRB-AL-20220118-001 | 18.02.2022        | Tirana International Development            | SHPK          | Rruga "Sami Frasheri" Nr.5, shkalla F, kati 1 Zyra 2  | Tirane                      | 1001     | 54X-1-0101-TID-P     | PUPPALTR                                 |                       | 028470078        |  |   |  |
| 10  | Shqipëri | ECRB-AL-20220118-001 | 18.02.2022        | ENER TRADE                                  | SHPK          | Rruga e Ehsanit, Obeliski Park Gate, Kati 1   | Tirane                      | 1001     | 54X-101ET091180      | USALALTR                                 | 8945000X1HJLANDKZY22  | L821180178       |  | <a href="https://www.linkedin.com/company/ener-trade-shk/mvcompany">https://www.linkedin.com/company/ener-trade-shk/mvcompany</a>   |  |
| 11  | Shqipëri | ECRB-AL-20230203-001 | 03.02.2022        | Energy Financing Team Tirana                | SHPK          | Rruga Murat Toptani, Oqndra e Biznesit EUROCOL, Kati 3  | Tirane                      | 1001     | 54X-EFT-TIRANA-V     | SCSBALTX                                 |                       | L171801017U      | <a href="http://www.eft-tirana.net">www.eft-tirana.net</a>               |   |  |
| 12  | Shqipëri | ECRB-AL-20230207-001 | 07.02.2022        | Energy 24                                   | SHPK          | Rruga Ismail Qemali Palli 11 Kati 2 (Pallati Teleport)  | Tirane                      | 1001     | 54-1-101-EN-24K      | SCSBALTX                                 |                       | 1913110078       |  |   |  |
| 13  | Shqipëri | ECRB-AL-20230216-001 | 16.02.2022        | Future Energy Trading and Exchange Dynamics | SHPK          | Rruga Bllat Golosni, Ndertesja 28 Rruga 7 Ate 14  | Tirane                      | 1019     | 54X-1-101FETED-J     | SCSBALTX                                 |                       | M21421046C       | <a href="http://www.futuredynamics.com">www.futuredynamics.com</a>       |   |  |
| 14  | Shqipëri | ECRB-AL-20230206-001 | 20.02.2022        | Aven AS Energi                              | SHA           | Rruga Pasa Gjon Pali II, ABA Business Center.   | Tirane                      | 1001     | 23X-150416-A-N       | SCSBALTX                                 |                       | L11731504A       | <a href="http://www.aven.com/it/">http://www.aven.com/it/</a>            | <a href="http://www.aven.com/it/en/aven-sq-energj-aba-armatidk">http://www.aven.com/it/en/aven-sq-energj-aba-armatidk</a>           |  |
| 15  | Shqipëri | ECRB-AL-20230206-001 | 20.02.2022        | Aven Energy Trading                         | SHA           | Rruga Pasa Gjon Pali II, ABA Business Center, Nr.601  | Tirane                      | 1001     | 23X-140426-AY-W      | SCSBALTX                                 |                       | L32130008F       | <a href="http://www.aven.com/it/">http://www.aven.com/it/</a>            |   |  |
| 16  | Shqipëri | ECRB-AL-20230223-001 | 23.02.2022        | EZ-S ENERGY                                 | SHPK          | Rruga Vaso Pasha, Postera me Nr. 364-1-7/2 Zona Kadestrale 8270                                     | Tirane                      | 1019     | 54X-11LKE250319E     | SCSBALTX                                 |                       | 191325503D       | <a href="https://www.ez-energy.com">https://www.ez-energy.com</a>        | <a href="https://www.ez-energy.com">https://www.ez-energy.com</a>   |  |
| 17  | Shqipëri | ECRB-AL-20230217-001 | 17.02.2022        | Devoll Hydropower                           | SHA           | ABA Business Center, Zyra Nr. 1206, Rruga "Papa Gjon Pali II"                                       | Tirane                      | 1010     | 23X-150409-DHP5      | SCSBALTX                                 | 529900FCS56H01B8S98   | K82418002C       | <a href="https://www.stalraft.al">https://www.stalraft.al</a>            | <a href="https://www.stalraft.al/what-we-offer/market-transparency/">https://www.stalraft.al/what-we-offer/market-transparency/</a> |  |
| 18  | Shqipëri | ECRB-AL-20230318-001 | 18.03.2022        | ENESCO Trading (Albania)                    | SHPK          | Njësia Bashkiake nr. 10, Rruga Bogdaneve, Vila nr.22, nr.2  | Tirane                      | 1019     | 54X-110ESA1019G      | HYVEDEMM59I                              |                       | E9889025L        | <a href="https://www.ensoco.eu/">https://www.ensoco.eu/</a>              |   |  |
| 19  | Shqipëri | ECRB-AL-20230316-001 | 16.03.2022        | Lengarica & Energy                          | SHPK          | Rruga Jal Varbobas, Vila nr. 10, Tirane   | Tirane                      | 1022     | 54X-1-1010H-LENU     | USALALTR                                 |                       | K83026602A       | <a href="http://www.ensohydro.al">www.ensohydro.al</a>                   |   |  |
| 20  | Shqipëri | ECRB-AL-20230317-001 | 17.03.2022        | PURNIZUESI TREGUT TE LIDE                   | SHA           | Bukurosh "Gjergj Fishta", Ndertesja Nr. 88, H. 1, Kati 1 IV, Njësia Administrative Nr. 7.           | Tirane                      | 1023     | 54X-1010F10220P      | AL120211006000000001446945               |                       | L81530019I       | <a href="http://www.esbex.al">www.esbex.al</a>                           | <a href="http://www.esbex.al">www.esbex.al</a>  |  |
| 21  | Shqipëri | ECRB-AL-20230317-002 | 17.03.2022        | KURUM INTERNATIONAL                         | SHA           | Rruga Ibrahim Rugova, pallati nr. 14 KT, "Green Park", Ap.nr.39, kati 6, Njësia Administrative Nr.5 | Tirane                      | 1001     | 23X-131115K3-1       | SCSBALTX (RAIFFEISEN BANK) NCBALTX (BKT) | K02727230T            | K02727230T       | <a href="http://www.kurum.al">www.kurum.al</a>                           | <a href="http://www.kurum.al">www.kurum.al</a>  |  |
| 22  | Shqipëri | ECRB-AL-20230317-003 | 17.03.2022        | Danske Commodities Albania                  | SHPK          | Rruga Ibrahim Rugova, Sky Tower, Godina nr. 5, Kati 9, Zyra 91                                      | Tirane                      | 1000     | 23X-131120DCALG      | SCSBALTX                                 |                       | L21702095R       | <a href="http://www.danskecommodities.com">www.danskecommodities.com</a> |   |  |
| 23  | Shqipëri | ECRB-AL-20230320-001 | 20.03.2022        | Droghda Energy                              | SHPK          | Rruga "Papa Gjon Pali II" Ndertesja Nr. 12, ABA Business Center                                     | Tirane                      | 1010     | 54X-111108G-01-W     | SCSBALTX / PUPPALTR                      |                       | K92025004I       |  |   |  |
| 24  | Shqipëri | ECRB-AL-20230320-002 | 20.03.2022        | Natvex Energy                               | SHPK          | Rruga Prush Nr. 48, Vaqarr  | Tirane                      | 1041     | 54X-1-01-EN-11YRL    | USALALTR                                 |                       | L7220023M        | <a href="http://www.natvexenergy.com">www.natvexenergy.com</a>           |   |  |
| 25  | Shqipëri | ECRB-AL-20230317-002 | 20.03.2022        | Fumizuesi i Sherbimit Universal             | SHA           | Bukurosh "Gjergj Fishta", Ndertesja Nr. 88, H. 1, Kati 1, Njësia Administrative Nr. 7.              | Tirane                      | 1023     | 54X-0101F5H022Q      | SCSBALTX                                 |                       | L81530016L       | <a href="http://www.fdu.al">www.fdu.al</a>                               |   |  |
| 26  | Shqipëri | ECRB-AL-20230314-001 | 23.03.2022        | LATHIZA INVEST                              | SHPK          | Ladhiza, Njësia Administrative Qafë-mali.   | Fisheh-Arriz                | 4402     | 54X-1-101 ILTH-B     | PUPPALTR XXX                             |                       | 19809202P        | <a href="http://www.lathiza.al">www.lathiza.al</a>                       |   |  |
| 27  | Shqipëri | ECRB-AL-20230324-001 | 24.03.2022        | Heci Bismex 1, 2                            | SHPK          | Obeliski Bismex, E.T.C. kati IV, zyra 5/2.  | Tirane                      | 1017     | 54X-1-0011BHF1-W     | AL842021107300000001002955660            |                       | K82401018        |  |   |  |
| 28  | Shqipëri | ECRB-AL-20230324-002 | 24.03.2022        | Heci Tervolt                                | SHPK          | Komuna Prashj Gramsh  | Gramsh                      | 3301     | 54X-1-21010BTEI      | ALI 6202112190000000013351925            |                       | K73621202N       | <a href="http://www.hecivolt.com">www.hecivolt.com</a>                   | <a href="http://www.hecivolt.com">www.hecivolt.com</a>  |  |
| 29  | Shqipëri | ECRB-AL-20230311-001 | 31.03.2022        | Axpo Albania                                | SHA           | Rruga e Rinasit, Tirana Business Park, Nd.07, Fisheh Preze  | Tirane                      | 1001     | 23X-150330-AA-K      | SCSBALTX                                 | 529900ZABTUMR5SSSS855 | K51628010V       | <a href="http://www.axpo.com">www.axpo.com</a>                           | <a href="http://www.axpo.com">www.axpo.com</a>  |  |
| 30  | Shqipëri | ECRB-AL-20230311-002 | 31.03.2022        | ADA SOLAR SE                                | SHPK          | Rruga "Dervish Himë", Ada Lower   | Tirane                      | 1001     | 54X-1-01-00ADS-6     | SCSBALTX                                 |                       | L815066036I      |  |   |  |
| 31  | Shqipëri | ECRB-AL-20230406-001 | 06.04.2022        | Operatori i Sistemit te Shperndarjes        | SHA           | Bukurosh "Gjergj Fishta", Ndertesja 88, Kati V, Hyrja 1   | Tirane                      | 1023     | 54X-1010FT0220P      | AL1521211016000000001386653              |                       | L81530018E       | <a href="http://www.esh.al">www.esh.al</a>                               | <a href="http://www.esh.al">www.esh.al</a>  |  |
| 32  | Shqipëri | ECRB-AL-20230414-001 | 14.04.2022        | G.S.K                                       | SHPK          | Rruga e Barrikladave, Pasuria nr.5735+1-2.Zona Kadestrale 8360                                      | Tirane                      | 1010     | 54X-0101-615K-N      | SCSBALTX                                 |                       | M0170510J        |  |   |  |