

BILANCI ENERGJITIK 6-MUJOR 2023 (MWh)

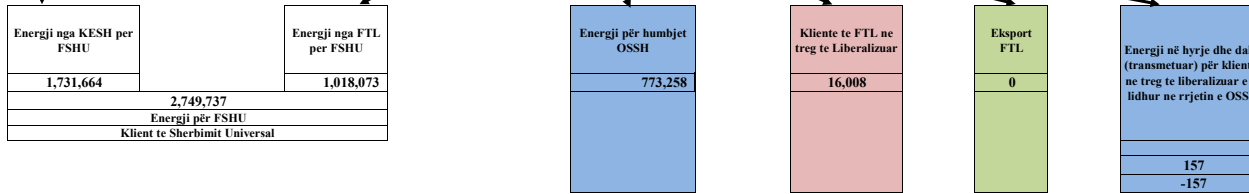
Prodhimi neto publik	
Prodhimi Neto KESH sha	
2,803,692	
Blerje KESH ne treg te liberalizuar	0
Prodhim+Blerje	2,803,692
<i>Shkembime (hyrje) KEEK</i>	
<i>Shkembime (dalje) KEEK</i>	1,072,028
<i>Energji shterbime ndihmese+disbal</i>	
Energji per FSHU nga KESH sha	1,731,664

Prodhuar nga PPE ne rrjetin e OSSH			Prodhuar nga PPE ne rrjetin e OST		Prodhues te pavarur						
Selgte	HC.Priv/Kon ne Rrjetin e OSSH per FTL	FOTOVOLTAIK (kont FTL)	HC.Priv/Kon ne Rrjetin e OST per FTL	Neto Ashta	Neto Banja	Neto Mergjiza	Neto KURUM	HC Peshqesh	HC Fangu	Hee Qami	Fotovoltaik (ne treg te lire)
12,770	651,731	29,756	696,266	155,708	96,678	168,598	229,058	60,316	139,885	2,592	9,132

Prodhim neto vendas	5,056,182
---------------------	------------------

Energji e siguruar nga FTL					
Blerje Neto (Selit)	Blerje HC.Priv/Kon ne Rrjetin e OSSH per FTL	Blerje FOTOVOLTAIK	Blerje HC.Priv/Kon ne Rrjetin e OST per FTL	Blerje Neto Ashta	Blerje ne Treg te Liberalizuar nga FTL
12,770	651,731	29,756	696,266	155,708	261,265
1,807,496					

Balanca ne interkoneksion (dhenie)	
	1,089,087



KONSUMI I ENERGJISE NE SHQIPERI	3,967,136
--	------------------

-40	
------------	--

3,967,095

Burimi: OST sha; KESH sha; OSSH sha; FSHU sha; FTL sha; (OSHEE Group sha)

TABELA ME TE DHENA PERIODIKE (MUJORE) TE OSHEE Sh.a 2023		Janar	Shkurt	Mars	Prill	Maj	Qershor	Progresive	
A	Energji Totale e Hyrë në OSHEE Sh.a (MWh)	A=A.1+A.3-A1.7	699,061	657,581	613,056	558,722	504,227	501,704	3,547,925
A.1	Energji e transmetuar nepermjet OST per llogari te OSHEE Sh.a	A.1=Sum(A.1.1-A1.6)	579,063	578,104	474,777	430,748	381,351	400,494	2,844,536
A.1.1	Nga KESH -Gen nepermjet OST		411,308	474,700	310,547	226,897	129,492	178,720	1,731,664
A.1.2	Nga OST si import i OSHEE Sh.a		3,984	3,360	3,715	57,327	92,381	100,499	261,265
A.1.3	Energji e transmetuar per Klientet_35kV (te dal ne treg te parregulluar furnizues te tjere)		21	19	26	30	43	19	157
A.1.4	Nga OST per llogari te klienteve te OSHEE Sh.a prodhuarnga HEC-et ne rrjetin e transmetimit		163,750	100,025	160,488	146,495	159,435	121,256	851,449
A.1.5	Nga TEC VLORA nepermjet OST		n/a	n/a	n/a	n/a	n/a	n/a	n/a
A.1.6	Nga BISTRICA 1,2 nepermjet OST		n/a	n/a	n/a	n/a	n/a	n/a	n/a
A.1.7	Export OSHEE Group Sh.a		-	-	-	-	-	-	-
A.2	Energji elektrike e injektuar ne OST nga Hec-et Lokale	A.2	59,687	29,705	75,556	68,977	67,556	54,066	355,549
A.3	Energji e transmetuar direkt ne rrjetin e OSHEE Sh.a	A.3 = Sum(A.3.1, A.3.3)	119,998	79,477	138,280	127,974	122,876	101,210	703,389
A.3.1	HEC Ulez,Lanabregas		1,990	1,984	2,352	2,231	2,259	1,955	12,770
A.3.2	Impjantet Private/me Koncesion		115,928	74,408	132,656	121,564	114,368	92,807	651,731
A.3.3	Burimet e Rinoveshme Fotovoltaik (BRE)		2,081	3,086	3,272	4,179	6,249	6,449	25,315
A.3.4	Prodhimi i injektuar ne OSSH nga BREE-t ne Treg te Parregulluar		1,528	2,360	2,652	2,969	1,958	2,105	13,572
B	Energji Totale ne Rrjetin e Shperndarjes (MWh)	B=A+ A.1.3+A.2	758,748	687,286	688,613	627,700	571,783	555,770	3,889,901
C	Humbjet Totale ne Rrjetin e Shperndarjes (MWh)	C=C.1+C.2+C.3	195,699	131,027	144,936	117,090	95,359	89,146	773,258
C.1	Humbje Teknikke njesite e TL (MWh)		9,646	8,281	8,784	6,506	8,231	8,106	49,553
C.2	Humbje Teknikke ne Zona (MWh)		114,969	83,263	87,857	72,373	57,936	55,846	472,243
C.3	Humbje JoTeknikke ne Zona (MWh)		71,085	39,483	48,295	38,211	29,193	25,194	251,461
C.1	Humbjet Totale ne OSHEE Sh.a (%)	C.1÷C/B	25.79%	19.06%	21.05%	18.65%	16.68%	16.04%	19.88%
C.1.1	Humbje Teknikke njesite e TL (%)		1.27%	1.20%	1.28%	1.04%	1.44%	1.46%	1.27%
C.2.1	Humbje Teknikke ne Zona (%)		15.36%	12.27%	12.93%	11.66%	10.29%	10.20%	12.30%
C.3.1	Humbje JoTeknikke ne Zona (%)		9.37%	5.74%	7.01%	6.09%	5.11%	4.53%	6.46%
D	Energjia e perdorur ne Rrjetin e Shperndarjes	D=Sum(D.1-D.7)	560,438	553,736	540,611	507,624	473,583	462,399	3,098,390
D.1	Shitur Klienteve FMF (MWh)	D.1=D.1.1+D.1.2	87,526	86,617	92,750	82,632	87,681	85,890	523,095
D.1.1	Shitur Klienteve FMF Privat (MWh)		38	29	1,747	80	119	229	2,242
D.1.2	Shitur Klienteve FMF JoBuxhetore(MWh)		1,963	1,497	(1,426)	1,484	1,604	1,842	6,963
D.1.3	Shitur Klienteve FMF 20/10/6 (MWh)		85,525	85,091	92,429	81,068	85,958	83,819	513,890
D.2	Shitur Klienteve Private (MWh)	D.2= D.2.1+D.2.2+D.2.3	90,903	96,966	87,186	84,533	84,530	94,649	538,588
D.2.1	Shitur nga rrjeti i Transmetimit per llogari te OSHEE Sh.a		-	-	-	-	-	-	-
D.2.2	Shitur per nevoja te veta te OSHEE Sh.a		645	658	693	562	421	319	3,298
D.2.3	Shitur Klienteve Private (pa ate per nevoja te veta dhe Ne TL)		90,258	96,308	86,494	83,791	84,109	94,330	535,290
D.3	Shitur Klienteve JoBuxhetore (MWh)		3,171	3,283	3,066	2,842	2,865	2,626	17,854
D.4	Shitur Klienteve Buxhetore (MWh)		14,725	15,636	13,342	12,204	10,127	9,131	75,165
D.5	Shitur Klienteve Familjare (MWh)	D.5=D.5.1+D.5.2	304,405	321,511	268,684	256,586	220,781	216,017	1,587,983
D.5.1	Shitur Klienteve Familjare (MWh)		296,730	314,046	260,733	249,296	213,201	206,933	1,540,939
D.5.2	Shitur Klienteve Familjare per Ambjentet e Perbashketa		7,675	7,464	7,951	7,290	7,580	9,083	47,043
D.6	Energji elektrike e injektuar ne OST nga Hec-et Lokale	D.6=A.2	59,687	29,705	75,556	68,977	67,556	54,066	355,549
D.7	Energji elektrike e perdorur nga klientet ne treg te parregulluar	D.7	21	19	26	30	43	19	157
E	Faturuar muaji Parardhës (000/leke)		7,458,986	7,236,860	7,477,014	6,588,875	5,993,172	6,074,125	40,829,032
F	Arketimet e muajit aktual (000/leke)	G=F.1+F.2+F.3+F.4	6,881,621	6,813,758	7,491,687	6,124,229	6,813,596	5,811,853	39,936,745
F.1	Arketuar per faturat korrente te vitit aktual		17,571	4,658,797	5,070,755	3,091,044	4,170,066	3,615,891	20,624,123
F.3	Arketuar per faturat e tjera te vitit aktual		-	1,589,330	2,666,176	2,335,047	1,934,852	8,525,405	-
F.4	Arketuar per faturat e tjera te viteve te kaluara		6,864,050	2,154,961	831,603	367,010	308,483	261,110	10,787,216
F.1	Arketimet e muajit aktual (%)	F.1÷F/E	92.3%	94.2%	100.2%	92.9%	113.7%	95.7%	97.8%
F.1.1	Arketuar per faturat korrente te vitit aktual (%)	F.1.1÷F.1/E	0.2%	64.4%	67.8%	46.9%	69.6%	59.5%	50.5%
F.1.3	Arketuar per faturat e tjera te vitit aktual (%)	F.1.3÷F.3/E	0.0%	21.3%	40.5%	39.0%	31.9%	20.9%	-
F.1.4	Arketuar per faturat e tjera te viteve te kaluara (%)	F.1.4÷F.4/E	92.0%	29.8%	11.1%	5.6%	5.1%	4.3%	26.4%
G	Faturuar muaji Raportues (000/leke)		7,236,860	7,477,014	6,588,875	6,321,511	5,993,172	6,074,125	39,691,557
1	Nr. Konsumatoreve gjithsej (Nr.)		1,303,679	1,305,432	1,308,515	1,308,397	1,148,821	1,312,353	1,312,353
2	Fatura te emetuara me lexim konsumi (Nr.)		1,002,695	1,004,350	1,016,651	1,018,757	1,014,495	1,027,799	6,084,747
3	Sasia e energjise se faturuar me lexim konsumi (MWh)		-	-	-	-	-	-	-
4	Fatura te emetuara me lexim "0" (Nr.)		303,472	304,589	295,744	297,428	140,844	296,170	1,638,247
5	Nr.Faturave te emetuara pa lexim (energji e pa matur) (Nr.)		-	-	-	-	-	-	-
6	Sasia e energjise se faturuar si energji e pamatur (MWh)		-	-	-	-	-	-	-
7	Nr.Faturave te emetuara pa lexim (dem ekonomik) (Nr.)		35	37	149	8	78	26	333
8	Sasia e faturuar si dem ekonomik (MWh)		535	696	702	45	230	78	2,287
9	Nr.Faturave per te cilat eshte arketuar kamat vonese (Nr.)		331,668	313,298	9,807	329,612	-	-	984,385
10	Vlera e Kamat vonesave te arketuara (000/leke)		132,185	119,494	78,782	72,486	83,076	90,849	576,873

BILANC OSSH, FSHU,FTL sha 2023 (6-mujori)

1	ENERGJI TOTALE E HYRE NE RRJETIN E OSSH-se		3,547,925
2	Energji e shitur nga KESH sha per FSHU sha		1,731,664
3	ENERGJI NE HYRJE E BLERE NGA FTL (OSHEE sha)		1,807,496
3.1	Blere nga Prodhimi i PPE në rrjetin e OSSH		694,257
3.2	Blere nga Prodhimi i PPE në rrjetin e OST		851,974
3.3	Blere ne Treg të Liberalizuar nga FTL sha		261,265
4	ENERGJI NE DALJE NGA FTL (OSHEE sha)		1,807,496
4.1	Energji nga FTL per FSHU		1,018,073
4.2	Energji nga FTL për humbjet OSSH		773,258
4.3	Energji e shitur nga FTL ne treg te liberalizuar		16,008
4.4	Eksport i FTL		-
4.5	Energji vetem per tu transmetuar tek klientet ne treg te liberalizuar (ne rrjetin e OSSH)		157
7	ENERGJI QE KALON NE RRJETIN E OSSH-se		3,889,901
7.1	Energji totale e transmetuar nga OST ne rrjetin e Shpërndarjes		3,186,513
7.2	Energji e transmetuar direkt ne rrjetin e Shpërndarjes nga impiantet e lidhur ne rrjetin e Shpërndarjes		347,840
7.3	Energjia e ngitur ne rrjetin e transmetimit nga centralet e lidhura ne rrjetin e OSSH		355,549
8	Humbje totale ne rrjetin e OSSH-se (%)	7.1 x 100 / 7	19.88

Burimi: OSSH sha; FSHU sha; FTL sha;

Bilanci i Energjisë Elektrike për vitin 2023

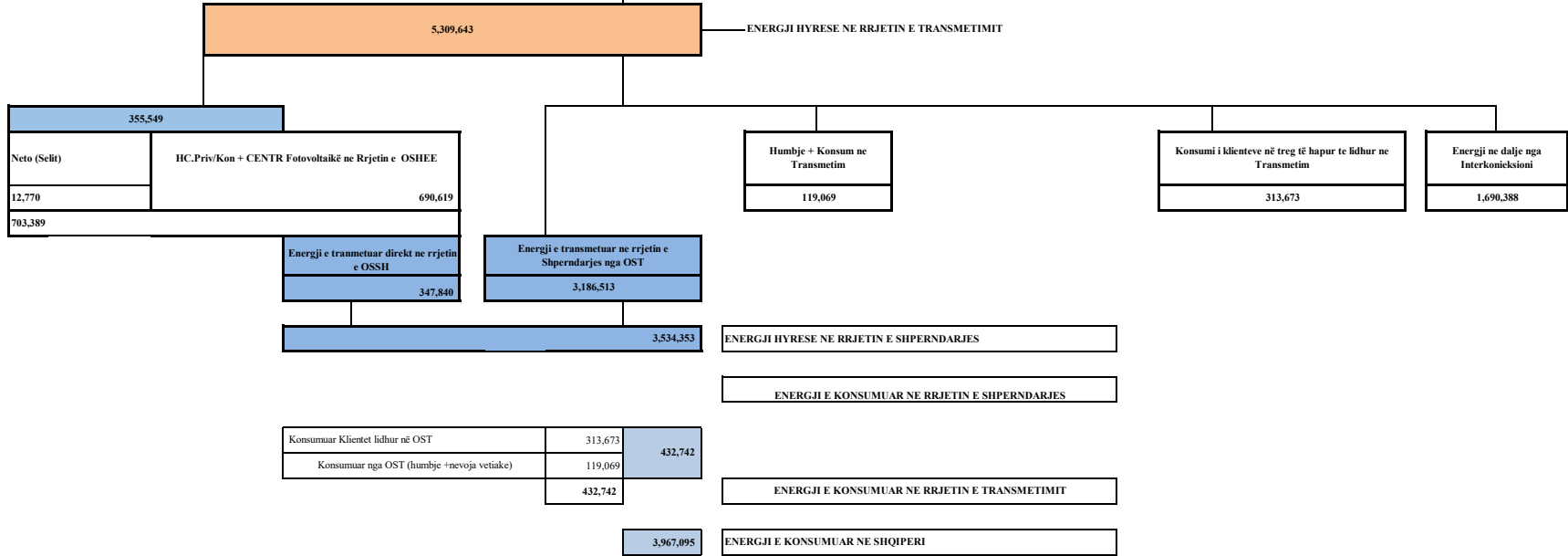
OST sha	Njësia e Matjes	Janar	Shkurt	Mars	Prill	Maj	Qershor	
	MWh							
Prodhimi nga KESH GEN në Rrjetin e Transmetimit	1	665,048	599,427	350,763	318,558	488,334	381,563	2,803,692
Prodhimi nga HEC/HPP e vogla në Rrjetin e Transmetimit	2	59,687	29,705	75,556	68,977	67,556	54,066	355,549
Prodhimi nga PPE/IPP e mëdha në Rrjetin e Transmetimit	3	129,234	69,919	138,215	127,256	133,255	100,979	698,858
Prodhimi nga HEC Peshqesh	4	13,532	6,558	13,089	12,741	9,140	5,257	60,316
Prodhimi nga HEC Banja	5	19,006	17,988	18,262	12,703	7,780	20,938	96,678
Prodhimi nga HEC FANG	6	41,733	21,699	32,666	20,161	17,504	6,123	139,885
Prodhimi nga HEC Moglicë	7	30,090	33,919	31,602	23,209	12,164	37,614	168,598
Prodhimi nga nga HEC Ashta	8	35,169	30,291	23,019	20,043	26,672	20,513	155,708
Prodhimi nga KURUM (Ulez-Shkopet&Bistrical,2)	9	44,271	41,090	36,363	34,900	45,761	26,674	229,058
Eksporti (-) nga Linjat e Interkonjeksionit	D	387,717	265,662	250,922	199,681	364,397	222,009	1,690,388
Importi (+) nga Linjat e Interkonjeksionit	R	51,364	63,212	131,284	135,881	106,085	113,475	601,301
Balanca (Total Interkonjeksioni)	11=(R-D)	336,353	202,450	119,638	63,799	258,312	108,535	1,089,087
Energjia Totale në Marrje	12=(1+2+3+4+5+6+7+8+9+10+R)	1,089,134	913,807	850,819	774,430	914,251	767,200	5,309,642
Humbjet në Rrjetin e Transmetimit (përfshirë Nevojat Vetjake)	13	25,216	17,110	19,532	18,151	22,863	16,197	119,069
Humbjet në Rrjetin e Transmetimit %	14=13/12	2.32	1.87	2.30	2.34	2.50	2.11	2.24
Energjia Totale në Dhënie	15=(12-13)	1,063,918	896,697	831,287	756,279	891,388	751,004	5,190,573
<i>Transmetuar në Linjat e Interkonjeksionit</i>	16=D	387,717	265,662	250,922	199,681	364,397	222,009	1,690,388
<i>Transmetuar tek Klientët e Kualifikuar</i>		38,979	25,586	32,684	59,843	80,042	76,540	313,673
<i>EL220-L220KURUM/337</i>		17,724	3,540	1,712	15,407	33,141	30,601	102,125
<i>Titan T1,T2</i>		9,331	4,543	7,006	10,642	11,097	10,636	53,255
<i>FUSHE KRUJE 220kV-T2/058</i>		-	409	3,878	1,910	2,903	1,997	11,097
<i>N/ST 220/6,3Colacent-T1/336</i>		631	910	2,421	1,371	1,130	2,168	8,630
<i>N/ST i GSA EL 110kV-T1/694</i>		10,555	15,188	-	-	-	-	25,742
<i>N/ST i GSA EL 110kV-T2/960</i>		-	219	15,779	16,873	17,440	16,979	67,290
<i>N/ST I CWI Albania T1/148</i>		477	464	469	574.19	516	484	2,984
<i>N/ST i AES EL 110kV-T1/690</i>		30	48	-	-	1,491	6,969	8,539
<i>N/ST I AES EL 110kV-T2/692</i>		111	84	1,175	6,722	5,719	-	13,810
<i>HEC Moglice T1,T2,T3</i>		1	2	3	1	2.29	2	11
<i>HEC Peshqesh-T1/633</i>		7	20	4	3.52	6	20	61
<i>Lajthiza T1/742</i>		19	61	1	0.77	8	138	227
<i>HEC Ashta1-T1,HEC Ashta2-T1,</i>		0.13	-	-	0.00	-	-	0
<i>HEC Banje T1,T2</i>		14	14	18	15	25	18	103
<i>HEC Fang-T1,T2,</i>		10	27	19	36	34	48	173
<i>Gjenerim KURUM</i>		9.11	0	1	16.25	0.93	7	34
<i>FERRO KROM-F1,F2,F3,F4</i>		60	57	200	6,272	6,528	6,474	19,590
<i>Transmetuar në rrjetin e Shpërndarjes</i>		637,223	605,449	547,681	496,756	446,949	452,455	3,186,512
<i>Transmetuar në rrjetin e Shpërndarjes 110 kV</i>		557,157	527,056	480,865	437,248	395,459	400,674	2,798,460
<i>Transmetuar në rrjetin e Shpërndarjes 35 kV</i>		43,042	41,140	35,667	31,282	28,494	29,728	209,352
<i>Transmetuar në rrjetin e Shpërndarjes 6, 10, 20 kV</i>		37,023	37,253	31,148	28,227	22,996	22,053	178,700

	Janar	Shkurt	Mars	Prill	Maj	Qershor	Korrik	Gusht	Shtator	Tetor	Nentor	Dhjetor	2023	
HYRJE														
Dhene nga H/C e KESH ne rrjetin e Transmetimit	665,048	599,427	350,763	318,558	488,334	381,563							2,803,692	5,309,642
Dhene nga H/C e me perparesi ne rrjetin e Transmetimit (+Qami)	129,234	69,919	138,215	127,256	133,255	100,979							698,858	
Energji nga Hec-et Lokale levruar ne Rrjetin e Transmetimit (me ngritje)	59,687	29,705	75,556	68,977	67,556	54,066							355,549	
Gjenerim KURUM (prodhues i pavarur)	44,271	41,090	36,363	34,900	45,761	26,674							229,058	
HEC ASHTA (prodhues i pavarur Kontr.me OSHEE)	35,169	30,291	23,019	20,043	26,672	20,513							155,708	
HEC BANJE (prodhues i pavarur)	19,006	17,988	18,262	12,703	7,780	20,938							96,678	
HEC MOGLICE (prodhues i pavarur)	30,090	33,919	31,602	23,209	12,164	37,614							168,598	
HEC PESHQESH-T1/637 (prodhues i pavarur)	13,532	6,558	13,089	12,741	9,140	5,257							60,316	
HEC FANGU (prodhues i pavarur)	41,733	21,699	32,666	20,161	17,504	6,123							139,885	
Importi(Hyre) nga Linjat e Interkonjeksionit	51,364	63,212	131,284	135,881	106,085	113,475							601,301	
DALE														
Humbjet ne Transmetim	25,216	17,110	19,532	18,151	22,863	16,197							119,069	5,309,642
Transmetuar ne Rrjetin e Shperndarjes	637,223	605,449	547,681	496,756	446,949	452,455							3,186,512	
Klientene treg te hapur (TL)	38,979	25,586	32,684	59,843	80,042	76,540							313,673	
Eksporti (Dale) nga Linjat e Interkonjeksionit	387,717	265,662	250,922	199,681	364,397	222,009							1,690,388	
Humbjet ne Transmetim	25,216	17,110	19,532	18,151	22,863	16,197							119,069	
Humbjet ne Transmetim ne %	2.32	1.87	2.30	2.34	2.50	2.11							2.24	

Burimi: OST sha

PARAQITJA SKEMATIKE E FLUKSEVE TE ENERGIJSE NE SISTEMIN ELEKTRO-ENERGJITIK SHQIPETAR VITI 2023 (MWh) (6-mujori)

Energji e lëvruar nga H/C-et e KESH sha	Energji e lëvruar nga prodhuesit me përparësi lidhur ne TL (kontrate me OSHEE)	Energji e lëvruar nga H/C ASHTA lidhur ne TL (kontrate me OSHEE)	Energji e lëvruar nga H/C et Priv/konc lidhur ne TL (Prodhues ne treg te hapur)						Energji ne dalje nga Interkoneksioni
2,803,692	696,266	155,708	Kurum	Banje	Moglice	Fangu	Peshqesh	Qumi	601,301
			229,058	96,678	168,598	139,885	60,316	2,592	



LEGIJENDA	
FSHU	FURNIZUES I SHËRBIMIT UNIVERSAL
FMF	FURNIZUES I MUNDËSISË SË FUNDIT

Burimi OST sha

PUBLIKIM 2023 (MWh) (6-mujori)

Prodhimi Vendas	Janar	Shkurt	Mars	Prill	Maj	Qershor	Korrik	Gusht	Shtator	Tetor	Nentor	Dhjetor	2023
Prodhimi Neto KESH sha.	665,048	599,427	350,763	318,558	488,334	381,563							2,803,692
Hec-et Private dhe Konc. (Rrjeti Shperndarjes)	115,928	74,408	132,656	121,564	114,368	92,807							651,731
Hec-et Private dhe Konc. (Rrjeti Transmetimit)	128,643	69,793	137,555	126,555	132,825	100,896							696,266
HEC Ashta	35,169	30,291	23,019	20,043	26,672	20,513							155,708
Prodhimi Neto Hec Lanabregas	1,990	1,984	2,352	2,231	2,259	1,955							12,770
Prodhimi Neto (Hec Ulez,Shkopet,Bistrica 1,2)	44,271	41,090	36,363	34,900	45,761	26,674							229,058
Prodhimi Hec Peshqesh	13,532	6,558	13,089	12,741	9,140	5,257							60,316
Prodhimi Hec Fangu	41,733	21,699	32,666	20,161	17,504	6,123							139,885
Prodhimi Hec Banja	19,006	17,988	18,262	12,703	7,780	20,938							96,678
Prodhimi Hec Moglica	30,090	33,919	31,602	23,209	12,164	37,614							168,598
Prodhimi Hec Qami-1	592	126	659	702	430	83							2,592
Prodhimi i Centraleve Fotovoltaike (11 297 FTL +10 829 ne treg te lire)	3,609	5,445	5,924	7,149	8,207	8,554							38,888
ENERGJIA NETO E PRODHUAR NE SHQIPERI	1,099,609	902,727	784,911	700,516	865,443	702,975							5,056,182

ENERGJI NGA INTERKONEKSIONI	Janar	Shkurt	Mars	Prill	Maj	Qershor	Korrik	Gusht	Shtator	Tetor	Nentor	Dhjetor	2023
Energji ne dhenie nga Interkoneksioni	-387,717	-265,662	-250,922	-199,681	-364,397	-222,009							(1,690,388)
Energji ne marrje nga Interkoneksioni	51,364	63,212	131,284	135,881	106,085	113,475							601,301
Ballanca Hyrje/Dalje nga Interkoneksioni	(336,353)	(202,450)	(119,638)	(63,799)	(258,312)	(108,534)							(1,089,087)

KONSUMI I ENERGJISE NE SHQIPERI	Janar	Shkurt	Mars	Prill	Maj	Qershor	Korrik	Gusht	Shtator	Tetor	Nentor	Dhjetor	2023
Konsumi i klientëve Tarifore	413,204	437,395	372,279	355,985	318,303	322,423							2,219,589
Konsumi i klientëve të furnizuar si FMF	87,526	86,617	92,750	82,632	87,681	85,890							523,095
Shitur klienteve si dem ekonomik	535	696	702	45	230	78							2,287
Konsumi i Klientëve që përdorin rrjetin për energjine e blerë ne treg të liberalizuar	21	19	26	30	43	19							158
Energji për Klientet ne treg të liberalizuar lidhur në OSSH me furnizues FTL	2,078	1,828	2,363	2,941	2,650	4,147							16,008
Konsumi për mbulimin e humbjeve	195,699	131,027	144,936	117,090	95,359	89,146							773,258
Konsumuar nga Klientet e lidhur në OST	38,979	25,586	32,684	59,843	80,042	76,540							313,673
Konsumuar nga OST (humbje +nevoja vetiake)	25,216	17,110	19,532	18,151	22,863	16,197							119,069
KONSUMI TOTAL 2023	763,258	700,278	665,273	636,716	607,171	594,440							3,967,136

Burimi: OST sha; KESH sha; OSSH sha; FSHU sha; FTL sha; (OSHEE Group sha)

PRODIMI GJATE VITIT 2023 NGA CENTRALET E LIDHURA NE RRJETIN E TRANSMETIMIT (MW)										
HECET DHE KAPACITETI	MW	SUBJEKTI	LIDHJA	JANAR	SHKURT	MARS	PRILL	MAJ	QERSHOR	2023
Hec "Fierze" me fuqi 500 MW	500.000	"KESH" sha	220 kV							
Hec "Koman" me fuqi 600 MW	600.000		220 kV	665,048	599,427	350,763	318,558	488,334	381,563	2,803,693
Hec "V. Dejes" me fuqi 250 MW	250.000		220 kV							
Hec Vloera me fuqi 98 MW	98.000	"KESH" sha	220 kV							2,803,693
Hec "Ulez" me fuqi 25.2 MW	25.200	"Kurum International" s.h.a.	110 kV							
Hec "Shkorpis" me fuqi 24 MW	24.000		110 kV							
Hec "Bistrica 1" me fuqi 22.5 Mw	22.500		110 kV	44,271	41,090	36,363	34,900	45,761	26,674	229,059
Hec "Bistrica 2" me fuqi 5 Mw	5.000		110 kV							
Hec "Peshkesh" me fuqi 27.94 MW	27.940	"Aven As Energji" sha	220 kV	13,532	6,538	13,089	12,741	9,140	5,257	60,317
Hec "Tungur" me fuqi 74.6 MW	74.600		220 kV	41,733	21,699	32,666	20,161	17,504	6,123	139,886
Hec "Banjs" me fuqi 73 MW	73.000	"Devoll Hydropower" sha	110 kV	19,006	17,988	18,262	12,703	7,780	20,938	96,677
Hec "Moglice" me fuqi 184 MW	184.000	"Devoll Hydropower" sha	111 kV	30,090	33,919	31,602	23,209	12,164	37,614	168,598
Hec Qami-1	1.750	"Ladhiza Invest" shpk		592	126	659	702	430	83	2,592
										697,130
Hec "Ashta" me fuqi 48.2 MW	48.200	"Energji Ashta" shpk	110 kV	35,169	30,291	23,019	20,043	26,672	20,513	155,707
										155,707
Hec "Bishnica 2" me fuqi 2.5 MW	2.500	"HEC Bishnica 1.2" shpk	110 kV	1,152	670	1,405	1,312	1,203	819	6,562
Hec "Dardhe" me fuqi 5.8 MW	5.800	"Wenerg" shpk	110 kV	2,658	941	2,284	2,731	1,626	1,138	11,378
Hec "Truen" me fuqi 2.5 MW	2.500	"TRUEN" shpk	110 kV							
Hec "Termove" me fuqi 8.385 Mw	8.385	"TODORI 2003" shpk	110 kV	932	1,241	1,325	1,305	1,204	590	6,397
Hec "Gjitarica" me fuqi 4.18 Mw (shic ne prodhim)	4.180	"DITEKO" shpk	110 kV	15,292	11,680	16,101	14,594	12,802	9,566	80,035
Hec "Slabinje" me fuqi 13.8 MW	13.800	"Power Elektrik Slabinje" shpk	110 kV	7,972	3,915	10,486	8,748	10,801	8,150	50,053
Hec "Bele 1" me fuqi 5 MW	5.000	"Euron Energy" shpk	110 kV							
Hec "Topojan 2" me fuqi 5.8 MW	5.800									
Hec "Bele 2" me fuqi 11 MW	11.000	"Alb-Energy" shpk		15,244	10,142	17,429	19,483	20,210	19,184	101,692
Hec "Topojan 1" me fuqi 2.9 MW	2.900	"Energji" shpk	110 kV							
Hec "Orjost I R" me fuqi 4.8 MW	4.800	"Energji" shpk	110 kV							
Hec "Cenjtje 1" me fuqi 2.3 MW	2.300	"Energy partners AP" shpk	110 kV	1,460	641	2,173	2,546	2,939	1,897	11,655
Hec "Cenjtje 2" me fuqi 2.8 MW	2.800		110 kV							
Hec "Trape" me fuqi 3.6 MW	3.600		110 kV							
Hec "Rapani 1.2" me fuqi 4 dhe 4.1 MW	8.100	"C & S Construction Energy" shpk	110 kV	4,322	2,421	4,512	4,922	5,578	4,386	26,142
Hec "Rapani 3.4" me fuqi 8.857 MW	8.850	"C & S Energy" shpk	110 kV	4,572	2,559	4,428	4,241	3,756	2,931	22,487
Hec "Llunari" me fuqi 13.62 MW	13.620	"Gjo.Spa POWER" shpk	110 kV	4,658	2,372	5,536	6,303	9,142	5,906	33,917
Hec "Lengarice" me fuqi 8.94 MW	8.940	"Lengarica & Energy" shpk	110 kV	4,024	3,108	4,350	2,666	2,495	3,104	19,746
Hec "Lura 1" me fuqi 6.54 MW	6.540	"Endat Lura" shpk	110 kV							
Hec "Lura 2" me fuqi 4.02 MW	4.020		110 kV	5,715	2,381	6,188	4,763	3,782	1,848	24,678
Hec "Lura 3" me fuqi 5.66 MW	5.660		110 kV							
Hec "Malla" me fuqi 5.455 MW	5.455	"Gjuro Res" shpk	110 kV	1,948	1,004	1,993	1,549	1,259	718	8,470
Hec Prella me fuqi 14.97 MW	14.970	"Pecle Energji"	110 kV	5,038	2,239	5,919	4,670	4,597	3,322	25,785
HEC Cemerica 1	0.88	"REJ ENERGY" shpk	110 kV							
HEC Cemerica 2	1.08		110 kV	2,005	1,277	2,343	1,691	1,956	1,795	11,066
HEC Cemerica 3	2.1		110 kV							
HEC TUC	4.47	MC Inerte Lumzi	110 kV	5,034	1,187	3,753	3,494	2,013	1,012	16,493
HEC Lumzi	7.1		110 kV							
Hec Densus	14.5	"Densus Power" shpk	110 kV	5,361	2,929	5,552	3,784	4,142	4,502	26,273
Llenga 1	1.73	"HEC LLËNGE" sh.p.k	110 kV							
Llenga 2	0.3		110 kV	918	460	1,476	1,581	1,712	1,347	7,493
Llenga 3	1.5		110 kV							
HEC Shqella Postje	2.3	Lina Energji shpk	110 kV	966	516	1,466	1,344	1,020	774	6,087
HEC Germani 1	4.8	SAGA-MAT shpk	110 kV	1,832	551	1,764	1,423	913	1,334	7,817
HEC Germani 2	1.5		110 kV							
Hec Lashkiza 1	4.076	HEC Lashkiza shpk	110 kV	1,390	597	1,116	695	589	195	4,581
Hec Lashkiza 2	0.882		110 kV							
Hec Seta 1+2	7.454	"Hydro Seta" sh.p.k	110 kV							
Hec Seta 3	2.722		110 kV	5,190	2,577	5,540	4,838	4,150	2,090	24,385
Hec Seta 4	4.724		110 kV							
HEC Darsi 1,2,3	12.7	Herz Energy shpk	110 kV	4,417	1,634	3,835	3,285	2,181	1,636	16,988
HEC Egnatia	5.1	REMI shpk	110 kV	1,862	715	1,453	1,566	1,340	915	7,851
HEC Seka & Zais684	14.96	SEKA Hydropower shpk	110 kV	7,858	4,206	10,123	8,762	8,786	6,198	45,934
HEC ARSTI	3.13	Hec Arsti shpk	110 kV	2,088	1,158	1,885	1,844	1,322	845	9,141
HEC KASKADA GJADER T1/344	24.9	S.P.E. Gjader shpk	110 kV	3,766	1,252	3,542	3,193	1,414	412	13,580
HEC-ei Dragobica/Ceremu/686	21.9	Dragobica Energy shpk	110 kV	8,543	4,249	7,679	7,383	14,533	8,961	51,346
HEC Veleshtica 1,2	13.9	"Kalisi Hydropower" shpk	110 kV	2,425	1,168	1,899	1,840	5,361	5,342	18,035
	2.266			128,643	69,793	137,555	126,555	132,825	100,896	696,266

PRODHIMI GATE VITIT 2023 NGA CENTRALET E LIDHURANE KRJETIN E SHPERNDARJES (MW)										
HECET DHE KAPACITETI	MW	SUBJEKTI	LIDHJA	JANAR	SHKURT	MARS	PRILL	MAJ	QERSHOR	2023
Hec "Lanabregas"	5.000	"Hec Lanabregas" sha	35	1.990	1.984	2.352	2.231	2.259	1.955	12.770
Hec "Lenie"	0.400	"EMIKEL 2003" sh.p.k	10kV	270	216	282	276	281	274	1.600
Hec "Corovode"	0.200		10kV	88	87	108	100	101	86	570
Hec "Smokthine"	9.200	"Albania Green Energy" sh.p.k	35 kV	4,172	4,461	3,923	3,327	3,147	2,999	22,029
Hec "Bulqize"	0.600		10kV	124	93	158	153	166	130	823
Hec "Homesh"	0.395		10kV	68	46	57	52	55	52	330
Hec "Zerqan"	0.625		6kV	104	131	174	174	165	128	877
Hec "Arras"	4.800		20kV	2,205	2,202	2,730	2,354	2,232	1,174	12,896
Hec "Orgjost"	1.200		10kV	700	625	724	753	671	613	4,087
Hec "Lekhibaj"	1.400		10kV	686	651	855	774	767	715	4,448
Hec "Dukagjin"	0.640		10kV	129	131	143	136	135	80	754
Hec "Marjan"	0.200		10kV	-	-	-	-	-	-	-
Hec "Lozhan"	0.100		10kV	44	26	59	63	55	27	274
Hec "Barmash"	0.820		10kV	138	209	233	137	117	118	952
Hec "Treske 2"	0.250		10kV	86	86	124	99	95	82	573
Hec "Nikolice"	0.700	"Balkan Green Energy" shpk	10kV	159	112	202	222	255	198	1,148
Hec "Funares"	1.920		10kV	852	849	821	868	855	738	4,962
Hec "Lunik"	0.200		10kV	143	134	135	144	139	107	802
Hec "Kerpace"	0.420		6kV	70	47	59	57	64	72	369
Hec "Ujanik"	0.630		10kV	132	89	172	140	110	102	745
Hec "Borsh"	0.250		6kV	62	113	78	119	96	82	550
Hec "Leshnice"	0.380		10kV	104	121	115	83	69	41	533
Hec "Vlcan"	1.200		10kV	413	286	619	463	743	511	3,035
Hec "Muhur"	0.250		6kV	76	75	84	72	66	24	397
Hec "Rajan"	1.020		10kV	276	371	494	321	246	179	1,887
Hec "Lure"	0.750		10kV	78	16	43	30	33	5	206
Hec "Gjanc"	2.960	"Spahiu Gjanc" sh.p.k.	35 kV	-	5	1,594	-	539	1,170	3,307
Hec "Bogove"	2.500	"Wonder power" sha	35 kV	993	689	1,330	813	965	1,194	5,983
Hec "Xhyre"	0.570	"Atmal" sh.p.k	10kV	241	207	227	210	216	184	1,284
Hec "Stranik"	4.600	"Hidroinvest 1" shpk	35kV	1,875	1,060	2,117	1,829	1,364	841	9,085
Hec "Zall Tore"	3.000		35kV	1,468	885	1,666	1,580	1,171	792	7,560
Hec "Klos"	1.950	"Maldio-Energi" shpk	6kV	568	313	512	406	329	201	2,328
Hec "Borje"	1.500	"HDROALBANIA Energi" shpk	35kV	2,275	1,448	2,495	2,830	3,813	3,156	16,016
Hec "Cermaleve"	2.950	"HDROALBANIA Energi" shpk	35kV	989	585	1,018	1,235	1,848	1,388	7,064
Hec "Cermaleve 1"	3.270	"HDROALBANIA Energi" shpk	35kV	1,087	641	1,129	1,345	2,039	1,542	7,783
Hec "Murdhar 1"	2.680	"HydroEnergy" shpk	10kV	1,654	1,072	1,579	1,915	1,050	748	8,019
Hec "Murdhar 2"	1.000		10kV	964	621	906	1,141	624	373	4,630
Hec "Dishnice"	0.200	"Dishnica Energy" shpk	10kV	30	22	51	70	79	47	299
Hec "Lubonje"	0.300	"Elekto Lubonje" shpk	10kV	90	57	97	66	68	33	410
Hec "Peshke"	3.430	"Koka & Ergi Energy Peshk" shpk	35kV	1,564	924	2,143	1,952	1,435	1,429	9,446
Hec "Labinot -Mal"	0.250	"Ansara Koncernimi" shpk	6kV	42	43	42	44	44	30	245
Hec "Pobreg"	12.300	"Energy Plus" shpk	35kV	5,448	3,469	6,101	6,915	7,184	6,590	35,707
Hec "Vlushe"	14.200	"Hec Vlushe" shpk	35kV	5,707	2,602	5,044	4,224	5,330	4,042	27,848
Hec "Belesova 1"	0.150	"Korkis 2009" shpk	6kV	17	6	18	-	28	11	80
Hec "Faqekuq 1,2"	6.400	"HP OSTROVKA" shpk	35kV	1,709	882	2,227	2,198	3,554	2,092	12,662
Hec "Shemri"	1.000	"Enald Energjitik" shpk	10	454	123	438	440	242	190	1,887
Hec "Mgulle"	0.280		10kV	247	163	297	293	230	160	1,389
Hec "Kryezi 1"	0.600	"Bekim Energjitik" shpk	10kV	545	212	516	555	298	68	2,194
Hec "Selishte"	2.000	"Selishte" shpk	35kV	795	474	1,131	1,022	810	499	4,730
Hec "Carshove"	1.500	"ERMA MP" shpk	10kV	408	404	460	307	304	299	2,183
Hec "Ura e Dashit"	1.200		10kV	1,411	1,059	1,609	1,015	946	1,150	7,189
Hec "Gizavesh"	0.500	"Dosku Energy" shpk	10kV	362	298	-	-	-	-	660
Hec "Koka 1"	3.200	"Snow Energy" shpk	35kV	573	312	1,015	1,095	666	680	4,342
Hec "Stravaj"	3.600	"Stravaj Energi" shpk	35kV	1,664	897	1,934	1,725	1,182	844	8,246
Hec "Picar 1"	0.200	"Peshka Picar 1" shpk	6kV	67	96	83	63	52	40	400
Hec "Vertop"	1.520	"Hydro Salilari Energy" shpk	35kV	297	190	270	244	50	149	1,201
Hec "Martanesh"	10.500	"Albanian Power" shpk	35kV	2,242	1,353	3,360	2,833	2,147	2,172	14,107
Hec "Verba 1,2"	5.000	"Hydro power Plant Of Korea" shpk	35kV	611	392	812	991	2,300	1,404	6,510
Hec "Pterra"	1.080	"Hidro Borshi" shpk	35kV	843	700	1,009	870	793	679	4,894
Hec "Ostren i Vogel"	0.320	"Lu & Co Eco Energy" shpk	10kV	91	85	107	108	111	93	593
Hec "Kozel"	0.500		10kV	101	48	72	133	157	134	646
Hec "Helmes 1"	0.800	"E.T.H.H." shpk	10kV	209	118	253	352	341	213	1,486
Hec "Helmes 2"	0.500		10kV	103	71	132	157	186	160	808
Hec "Qafzeze"	0.400	"Caushi Energi" shpk	10kV	396	282	459	420	422	400	2,378
Hec "Trebisht"	1.775	"SA GJE Kompani" shpk	10kV	654	321	712	753	592	243	3,276
Hec "Mollaj"	0.600	"Energi Xhaci" shpk	10kV	-	-	76	59	161	163	459
Hec "Tuesp"	0.400	"Tuesp" shpk	10kV	272	268	299	3	300	270	1,412
Hec "Treskad"	3.600		35kV	1,298	911	1,358	1,035	1,025	975	6,603
Hec "Treska3"	0.300	"Hec-Treska3" shpk	35kV	206	134	216	158	161	154	1,029
Hec "Treska 2T"	0.620		35kV	450	234	343	258	256	223	1,764
Hec "Sotirel & 2"	2.200	"Hidro Energy Sotire" shpk	35kV	714	312	606	507	634	913	3,687
Hec "Shutine"	2.400	"Shutine energi" shpk	10kV	427	239	584	549	261	113	2,173
Hec "Cekrez 1,2"	0.660	"Zall Herr Energi 2011" shpk	6kV	289	273	307	298	200	406	1,773
Hec "Qarr"	1.000	"Hec Qarr & Kaltani" shpk	35kV	764	373	585	327	282	386	2,718
Hec "Bisak"	1.300	"Bardhiana" shpk	6kV	645	436	595	423	333	209	2,642
Hec "Shales"	1.080		35kV	-	-	316	323	245	161	1,046
Hec "Strelce"	1.174	"Gjoka Konstruktion Energi" shpk	35kV	405	367	916	802	557	727	3,774
Hec "Shpelle"	0.400	"Sarolli" sh.p.k	10kV	117	75	179	214	111	127	824
Hec "Bicaj"	3.100	"EN-KU" sh.p.k	10kV	-	-	-	-	-	-	-
Hec "Leskovik 1"	1.072	"Maksi Elektrik" sh.p.k	10kV	41	43	49	46	42	39	260
Hec "Leskovik 2"	1.100		10kV	51	55	62	59	63	59	349
Hec "Orenje"	0.875	"Juana" sh.p.k	10kV	250	201	191	193	163	109	1,106
Hec "Tamarë"	0.750	"WTS Energi" shpk	10kV	-	-	-	-	-	-	-

Hec "Bene"	1.000	"Marjakaj" shpk	6kV	163	124	162	163	155	50	818
Hec "Vithkuq" 2				-	879	-	-	-	1,226	2,104
Hec "Vithkuq" 1	2.715	"Favina 1" shpk	35/10kV	1,585	-	-	1,408	1,257	-	4,250
Hec "Seles"	1.600	"Selca Energy" shpk	10kV	615	506	575	788	1,149	882	4,515
Hec "Kumbull- Merkurth"	0.820	"DN & NAT Energy" shpk	6kV	171	54	230	207	346	100	1,108
Hec "Sasi"	8.600	"Energy- Sasi" shpk	25kV	2,757	2,333	3,041	2,471	2,355	1,711	14,667
Hec "Tervol"	10.600	"Hec 1 Tervoliti" shpk	35kV	3,704	1,461	4,999	4,757	3,025	2,556	20,502
Hec "Radove"	2.500	"MTC Energy" shpk	10kV	1,213	1,053	1,184	737	765	918	5,869
Hec "Gurshpat 1"	0.840	"Gurshpat Energy" shpk	10kV	721	511	496	575	491	341	3,134
Hec "Gurshpat 2"	0.830	"Gurshpat Energy" shpk	10kV	817	563	617	653	542	375	3,567
Hec "Bistrica 3"	1.570	"Bistrica 3 Energy" shpk	6kV	477	42	-	13	605	658	1,795
Hec "Hurdhas 1"	1.710	"Komp Energy" shpk	6kV	2,102	1,064	1,732	1,692	1,326	667	8,582
Hec "Perrollaj"	0.500	"Farlum" shpk	10kV	145	39	86	137	68	-	474
Hec "Koxheraj"	0.620	"Koxheri Energi" shpk	10kV	206	136	260	210	171	182	1,165
Hec "Kaeni"	3.870	"Kisi-Bio-Energj" shpk	20kV	483	78	927	628	927	470	3,512
Hec "Lena 1"	1.950		35kV							
Hec "Lena 2"	2.300	"Gama Energy" shpk	35kV	950	444	1,354	1,284			
Hec "Lena 2A"	0.250		35kV					868	849	5,749
Hec "Driza"	3.408	"Mesopotam Energy" shpk	35kV	449	304	363	281	234	159	1,790
Hec "Strelca 1,2,3	5.349	"Strelca Energy" shpk	35kV	786	697	1,537	1,749	2,563	1,758	9,090
Hec "Ujanik 2"	2.500	"HP Ujaniku Energy" shpk	35kV	815	431	904	526	414	554	3,644
Hec "Nishove"	1.360	"Nishova Energy" shpk	35kV	70	64	59	62	60	10	324
Hec "Shtika"	1.300	"Peparani SK" shpk	10kV	476	391	397	255	159	93	1,770
Hec "Ballenje"	1.900	"Ballenja Power Martanesh" shpk	35kV	483	187	646	606	409	489	2,820
Hec "Gavran 1"	0.998	"Gavran Energy" shpk	35kV	444	171	431	413	283	200	1,942
Hec "Gavran 2"	1.215	"Gavran Energy" shpk	35kV	318	127	316	351	246	154	1,512
Hec "Kasollet e Selces 1"	4.000	"Xhango Energi" shpk	35kV	851	543	1,327	1,044	1,409	1,018	6,190
Hec "Holta Kabash"	2.200	HEC Kabash	35kV	1,324	694	1,762	1,414			
Hec "Holta Porocan"	3.300	HEC Kabash Porocan shpk	35kV					1,183	974	7,351
Hec "Lusen 1"	0.315	"Enobiznes" shpk	35kV	92	59	89	67	34		342
Hec "Ura e Fanit"	1.000	"Aven As Energi" shp	35kV	563	510	577	547	538	532	3,268
Hec "Gorice"	1.747	"THE BLUE STAR" sh.p.k	35kV	684	423	1,117	966	671	721	4,582
Hec "Kabash 1&2"	5.800	"Univers Energi" shpk	35kV	1,078	264	1,017	993	409	5	3,766
Hec "Lucep 2"	1.7	"DUKA T2" shpk	35kV	343	348	405	689	398	324	2,507
Hec "Dobrenje Tomorrice"	2.4	DAAB Energy Group shpk	35kV	346	242	336	266	228	232	1,650
Hec "Razdoli"	0.765	Hidro Vizion shpk (pa licens nga ERE)	35kV	144	116	287	357	490	253	1,647
Hec "Dragostunje"	3.1	"HEC-a Dragostunje" shpk	35kV	2,328	867	3,054	3,107	3,125	2,298	14,780
Hec "Stebleve"	3.4	"PURE ENERGY STEBLEVA" shpk	35kV	283	107	451	480	411	234	1,967
Hec "Zerec 1"	0.55	"EnRel Hydro" shpk	35kV	750	477	917	821			
Hec "Zerec 2"	1.315							527	630	4,122
Hec "Shengion 1"	0.651	"EDIANI" sh.p.k.	35kV	411	237	393	336	276	158	1,810
Hec "Shengion 2"	0.356									
Hec "Blac"	1.3	"BLAC ENERGY" sh.p.k	35kV	46	13	56	93	386	93	686
Hec "Qarrishte"	0.3	"IDI-2005" SHPK	35kV	148	50	166	195	225	177	960
Hec "Vendresh"	0.456	"HP VENDRESH ENERGY" SHPK	35kV	-	-	-	6	18	23	47
Hec "Antena"	1.105	"DERBLE" shpk	35kV	308	50	402	305	178	94	1,336
Hec "Kamenice"	0.973	HP Kamenica shpk	10	374	186	370	370	397	382	2,079
Hec "Orteze"	0.9	Muso hec Ortezet	10	223	155	275	288	384	310	1,634
Hec "Marjan Gura e Vesheve"	0.63	Marinda Shpk	10	193	71	135	159	278	246	1,082
Hec "Skatine"	2.677	Skatina Hec Shpk	10	750	252	646	960	422	254	3,284
Hec "Kapariel"	0.2	ABV Konstruktion Shpk	10	54	59	64	64	59	47	348
Hec "Letaj"	0.54	Asi-Tre Shpk	10	136	69	138	131	86	106	666
Hec "Nico"	2.133	MP-HEC Shpk	35	131	91	379	231	242	196	1,269
Hec "Meshurdhe"	1.8	SIMA-Com Shpk	10	998	523	1,035	924	568	252	4,301
Hec "Thanez"	1.95	AFRIMK Shpk	35	896	345	1,099	1,138	501	586	4,564
Hec "OSOJE"	1.9	OSOJA HPP shpk	35	1,365	779	1,206	771	706	1,001	5,828
Hec "Voskopoje"	1.9	FAVINA 1 shpk	35	995	491	875	622	569	718	4,270
Hec "Nderfushas"	1.34	SGD Energi shpk	35	248	102	347	321	231	266	1,515
Hec "Rreshen"	0.38	Nikolli Energy shpk	10	132	101	143	137	111	60	683
Hec "Gurra"	0.5	Uleza Nderim shpk	6	146	103	133	116	111	99	709
Hec "Vile"	1.994	Hydro Power Panarit shpk	35	770	590	994	622	497	478	3,952
Hec "Dukona"	0.800	Dukona shpk	20	80	41	86	84	56	176	533
Hec "Prevalli"	1.750	Gegri-G shpk	35	1,144	699	1,186	1,208	853	940	6,030
Hec "Camerice"	0.800	Rei Energy shpk	35	789	662	839	827	829	704	4,651
Hec "Struc"	2.000	Era Hydro shpk	35	1,255	553	1,680	1,609	1,069	959	7,124
Hec "Miras"	1.940	Etra 2001 shpk	35	612	487	860	530	326	349	3,163
Hec "Spathare"	1.038	Lucecne concensionare shpk	10	726	610	291	457	337	160	2,581
Hec "Miraka"	0.600	Kuenci Blace shpk	10	204	84	209	165	110	45	818
Hec "Shequm"	2.000	Inaba Energi shpk	10	329	246	310	321	286	224	1,717
Hec "Dobrunje"	0.840	W.T.S. Energi shpk	10	261	250	319	319	466	220	1,835
Hec "Muras"	2	Matoek Co shpk	10	1,004	620	1,432	1,304	1,336	436	6,132
Hec "Trojjet"	0.9	Trojjet Energi shpk	10	325	267	572	536	460	258	2,418
Hec "Deni"	0.85	ASI TRE shpk	35	270	93	313	259	147	134	1,216
Hec "Kamican"	1.86	IGI 2005 shpk	35	970	349	996	991	729	464	4,499
Hec "Vardar"	1.97	Gerti shpk	35	1,364	1,262	1,622	1,566	1,638	1,581	9,034
Hec "Stavec"	6.5	Koka Ergi Stavec shpk	35	4,281	2,445	4,872	4,222	3,054	2,599	21,473
Hec "Kalis"	2.13	ERDY Energy shpk	35	1,234	954	1,346	1,264	1,061	689	6,546
Hec "Gjimar"	0.83	Erdi Gas shpk	10	151	90	170	202	125	138	875
Hec "Backa 1"	3.36	Kroi Mbret shpk	35	2,147	1,322	2,587	1,781	1,711	1,722	11,269
Hec "Plep"	2.28	Dom Tev shpk	35	285	132	371	444	299	268	1,798
Hec "Zali Xhuxhe"	4.7	Hec Zali Xhuxhe	35	892	376	883	749	857	637	3,537
Hec "Pisha"	1.9	Green TECH energy systems	35	150	119	251	340	115	11	997
Hec "Limeqanca 1&2"	2.2	"Re-Energj" shpk	35	641	386	768	574	416	296	3,083
Hec "Guri i Zi"	1.7	"Ars Albana" shpk	35	370	143	442	324	270	226	1,774
Hec "Drita"	1.98	"Bescani R.O.S.P." shpk	20	1,139	824	1,249	1,112	1,411	1,206	6,941
Hec "EME"	0.45	"Hec EME" shpk		205	109	208	161	115	46	844
Hec "Terfori"	1.98	"HEC TERFOJA" sh.p.k		810	619	698	917	898	747	4,689
Hec "Borie Lura 1"	1.8	"AGETA" sh.p.k		202	77	360	400	564	228	1,831
Hec "Mali"	1.49	"BRANA ENERGIJ" sh.p.k		1,107	943	1,331	1,303	1,267	898	6,850
Hec "Shelli"	1.518	"ARIS ALBANIA" SHPK		-	326	554	199	171	96	1,547
Hec "Daznjane"	1.518			-	326	404	550	539	476	2,296
Hec "Vokopola"				-	-	-	-	21	37	65
				-	-	-	-	-	325	325
	328			117,917	76,392	135,008	123,795	116,637	94,762	664,501

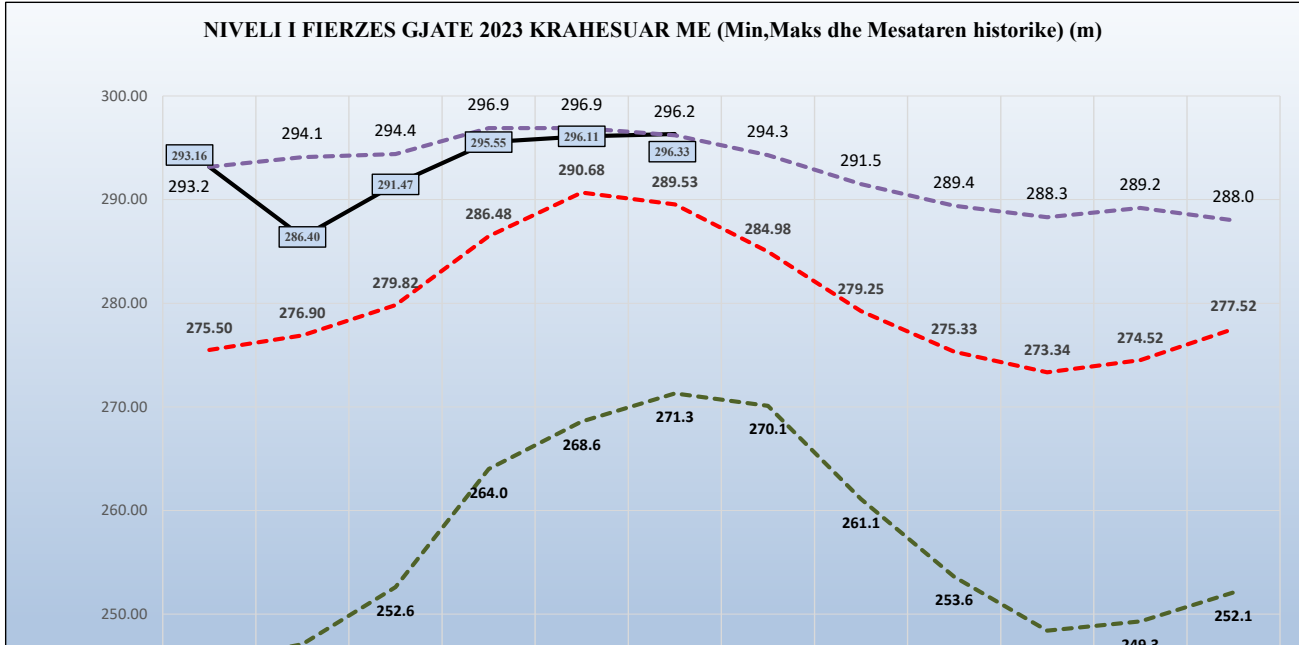
PRODHIMI GJATE VITI 2023 NGA CENTRALET FOTOVOLTAIKE TË LIDHURA NE RRJETIN E SHPERDARJES (MWh)											
CENTRAL FOTOVOLTAIK	MW	SUBJEKTI	LIDHJA	JANAR	SHKURT	MARS	PRILL	MAJ	QERSHOR	2023 (6-M)	
Scman - 2	2	"SEMAN2SUN" sh.p.k	35 kV	190	288	283	394	402	398	1,955	
Topojë	2	"SONNE" sh.p.k	35 kV	189	286	282	393	400	393	1,942	
Topojë 2	2	"AGE SOLAR" sh.p.k	35 kV	192	285	281	393	399	391	1,939	
Topojë (Sheq Marinos)	2	"AGE SUNPOWER" sh.p.k	35 kV	187	285	281	392	399	392	1,936	
Topojë (Sheq Marinos) 2	2	"SEMAN SUNPOWER" sh.p.k	35 kV	199	289	287	407	411	397	1,989	
Scmani i aslar	2	"SEMANI SOLAR" sh.p.k	35 kV	201	293	292	391	385	372	1,934	
ES 2019 sh.p.k	2	ES 2019 sh.p.k	35 kV	221	319	352	431	428	413	2,164	
SMART WATT sh.p.k	2	SMART WATT sh.p.k	35 kV	221	323	349	434	425	411	2,162	
Tren Bilisht	2	"RTS" sh.p.k	35 kV	215	303	315	290	293	349	1,765	
STATKRAFT Renewbles alban PV Lundrues banje	2	"STATKRAFT"	35 kV	77	126	167	197	178	181	926	
Pv -Plug	2	"AEE" sh.p.k	10 kv	187	291	383	459	480	464	2,264	
Korea Photovoltaic Park Shpk/920	2	Korea Photovoltaic Park Shpk	35 kV	195	306	316	291	258	365	1,731	
NTSP Shpk/944	2	NTSP Shpk	35 kV	204	304	300	288	255	361	1,712	
Sun Beat System Shpk/921	2	Sun Beat System Shpk	35 kV	199	307	312	293	257	359	1,728	
Tren Sun System Shpk/919	2	Tren Sun System Shpk	35 kV	204	312	319	290	258	359	1,741	
ERENI SOLAR		ERENI SOLAR shpk 35 kv	35 kV	-	-	-	-	456	377	833	
GREEN ENERGY BILISHTI		GREEN ENERGY BILISHTI SHPK 35 kv	36 kV	-	-	-	-	567	467	1,034	
Total				2,883	4,314	4,520	5,340	6,249	6,449	29,756	
EZ-5 Solar Park	10	EZ-5 Solar Park	35 kV	364	564	698	970	965	1,046	4,606	
EZ-5 Solar Park		EZ-5 Solar Park	35 kV	362	567	706	839	993	1,060	4,526	
Tot ne treg te lire				725	1,131	1,404	1,808	1,958	2,105	9,132	
				3,609	5,445	5,924	7,149	8,207	8,554	38,888	
Kapaciteti Instaluar i gjithe prodhuesve	2.634									5,056,184	

NIVELI I FIERZES 1991-2023

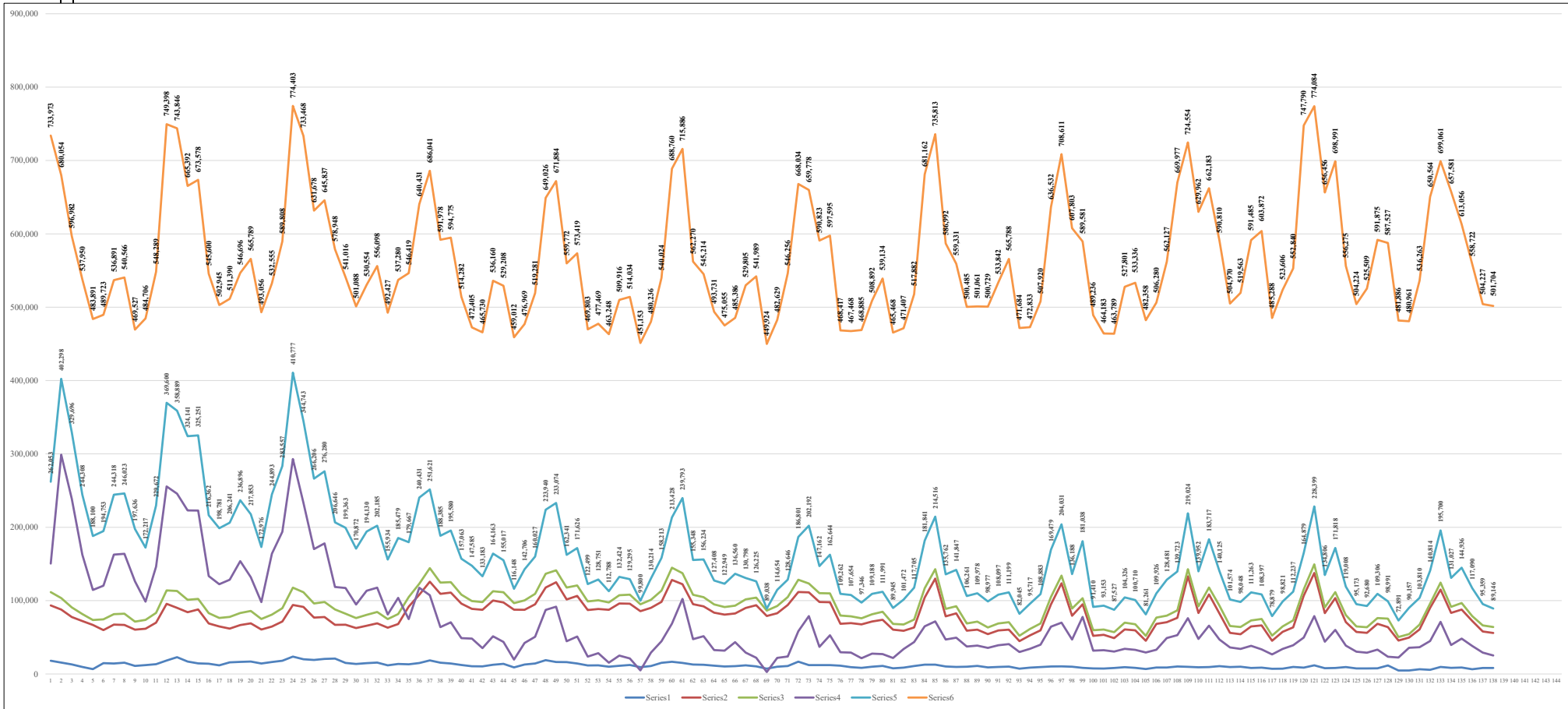
	Janar	Shkurt	Mars	Prill	Maj	Qershor	Korrik	Gusht	Shtator	Tetor	Nentor	Dhjetor
1991	254.4	260.8	268.6	279.9	293.4	296.1	294.0	291.5	289.4	288.3	288.8	285.1
1992	278.0	274.1	268.0	278.8	281.0	279.6	275.2	268.7	263.9	271.4	281.9	280.6
1993	275.2	265.3	264.7	278.5	280.5	277.3	271.0	261.1	253.6	249.9	255.6	270.2
1994	254.4	260.8	268.6	279.9	293.4	296.1	294.0	291.5	289.4	288.3	288.8	285.1
1995	253.8	260.3	262.5	275.3	289.0	288.7	284.5	282.2	288.2	283.8	279.9	287.5
1996	287.1	288.7	286.5	294.7	295.8	293.1	287.6	282.2	285.1	284.3	289.2	291.3
1997	289.4	284.5	281.7	285.2	294.1	292.0	287.0	280.0	272.9	272.4	270.8	277.2
1998	273.7	270.0	265.2	278.9	288.1	287.4	281.8	277.6	276.0	277.1	279.0	277.1
1999	272.7	275.6	281.5	290.5	295.9	293.3	288.3	279.5	271.0	257.6	263.6	276.9
2000	276.4	276.7	276.8	286.9	286.6	280.1	273.5	267.5	261.6	248.4	249.3	252.1
2001	253.6	258.2	275.1	282.9	287.6	283.8	273.7	271.1	269.2	263.6	263.2	252.1
2002	245.3	247.1	252.6	264.0	268.6	271.3	270.1	267.8	274.3	286.1	285.3	284.0
2003	291.1	289.5	286.3	287.0	292.3	290.3	285.9	280.8	276.0	282.6	285.6	283.3
2004	284.7	290.8	293.4	296.0	296.2	296.2	293.1	286.3	281.1	280.0	286.1	288.0
2005	281.2	281.5	293.3	296.1	295.6	294.1	286.7	277.2	266.5	256.9	253.6	279.0
2006	283.5	288.6	294.4	295.9	296.5	295.9	293.8	290.2	285.3	278.7	266.2	256.2
2007	256.1	263.7	272.0	276.8	276.8	274.8	268.5	263.6	261.8	261.1	275.8	282.1
2008	285.1	289.7	290.9	295.5	295.3	295.7	294.3	288.6	283.9	280.9	285.2	286.5
2009	283.6	281.8	283.4	292.5	293.7	292.4	288.0	281.2	276.2	271.6	266.3	280.1
2010	290.1	289.2	293.9	296.0	296.3	294.4	291.8	288.6	284.9	285.2	284.3	287.5
2011	281.6	274.1	275.0	276.6	281.0	286.1	284.7	279.0	273.9	268.2	261.6	264.5
2012	265.8	274.1	262.0	280.2	293.4	294.4	288.4	280.4	261.4	261.6	269.0	276.6
2013	278.3	274.1	294.8	296.9	296.9	294.2	289.7	283.6	280.8	281.4	282.5	276.1
2014	275.1	274.1	274.6	285.3	292.9	294.9	291.7	286.8	285.5	285.0	284.8	286.3
2015	288.7	274.1	292.2	296.3	296.1	293.3	287.5	280.1	272.1	275.4	278.9	275.9
2016	289.9	274.1	291.8	296.5	296.2	295.6	290.5	285.4	283.3	288.4	288.9	281.6
2017	271.5	274.1	280.9	278.7	281.6	272.4	270.2	268.0	271.0	264.6	269.6	289.9
2018	289.7	274.1	295.0	296.5	296.4	296.0	294.0	287.5	277.9	270.2	266.5	267.3
2019	267.3	274.1	272.7	279.9	289.9	292.7	287.6	278.5	274.2	268.6	273.2	275.6
2020	271.6	272.0	283.5	288.6	293.6	291.7	284.6	276.5	273.5	274.1	268.7	272.7
2021	291.7	294.1	292.6	294.3	296.7	291.7	282.7	274.3	271.3	267.7	267.8	275.1
2022	270.7	268.3	260.7	282.5	289.0	288.0	281.5	270.4	271.4	267.9	281.7	291.7
2023	293.2	286.4	291.5	295.6	296.1	296.3						

	Janar	Shkurt	Mars	Prill	Maj	Qershor	Korrik	Gusht	Shtator	Tetor	Nentor	Dhjetor
2023	293.16	286.40	291.47	295.55	296.11	296.33						
Mesataria	275.50	276.90	279.82	286.48	290.68	289.53	284.98	279.25	275.33	273.34	274.52	277.52
Minimumi	245.3	247.1	252.6	264.0	268.6	271.3	270.1	261.1	253.6	248.4	249.3	252.1
Maksimumi	293.2	294.1	294.4	296.9	296.9	296.2	294.3	291.5	289.4	288.3	289.2	288.0

NIVELI I FIERZES GJATE 2023 KRAHESUAR ME (Min,Maks dhe Mesataren historike) (m)



	2012	2013	2014	2015	2016	2017	2018	2019	2020	2021	2022	2023
Humbjet teknike ne nenetacionet e TL	86,974	83,441	86,974	86,974	86,974	86,974	86,974	86,974	86,974	86,974	86,974	86,974
Humbjet teknike në zonat e shpërndarjes	11,515	11,515	11,515	11,515	11,515	11,515	11,515	11,515	11,515	11,515	11,515	11,515
Humbjet teknike Totale	98,489	94,956	98,489	98,489	98,489	98,489	98,489	98,489	98,489	98,489	98,489	98,489
Humbjet jo-teknike Totale	1,000,000	1,000,000	1,000,000	1,000,000	1,000,000	1,000,000	1,000,000	1,000,000	1,000,000	1,000,000	1,000,000	1,000,000
Humbjet Totale	1,098,489	1,094,956	1,098,489	1,098,489	1,098,489	1,098,489	1,098,489	1,098,489	1,098,489	1,098,489	1,098,489	1,098,489
ENERGJI TOTAL NË OSSH	733,973	762,463	840,538	111,515	83,441	86,974	86,974	86,974	86,974	86,974	86,974	86,974

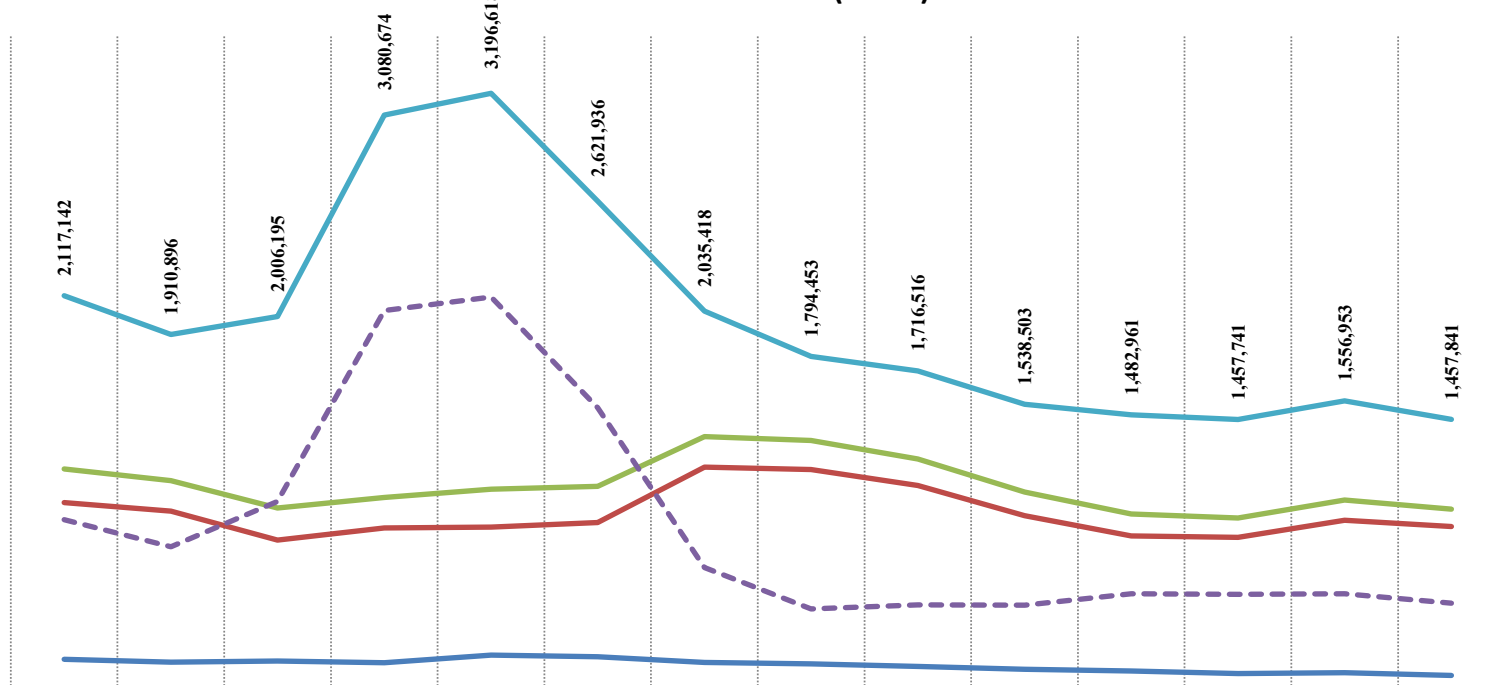


Burimi: OSSH-sha / (OSHEE Group-sha)

HUMBJET NE RRJETIN E SHPERNDARJES 2009-2023(MWh)

	2009	2010	2011	2012	2013	2014	2015	2016	2017	2018	2019	2020	2021	2022	2023 (6-M)
HUMBJE TEKNIKE NE TL (N/ST)	178,738	163,546	170,937	161,831	201,684	193,208	162,725	155,629	141,707	125,974	117,739	103,729	107,340	93,331	49,553
HUMBJE TEKNIKE NE ZONAT E OSSH	1,015,450	968,535	814,826	879,616	884,360	908,416	1,203,793	1,190,872	1,106,007	944,587	836,561	828,906	921,330	886,682	472,243
TOTALI I HUMBJEVE TEKNIKE OSSH	1,194,188	1,132,081	985,763	1,041,447	1,086,044	1,101,624	1,366,518	1,346,501	1,247,714	1,070,560	954,300	932,635	1,028,670	980,013	521,797
HUMBJE JOTOKNIKE OSSH	922,954	778,815	1,020,432	2,039,227	2,110,575	1,520,312	668,900	447,952	468,802	467,943	528,661	525,106	528,283	477,828	251,461
TOTALI I HUMBJEVE OSSH	2,117,142	1,910,896	2,006,195	3,080,674	3,196,618	2,621,936	2,035,418	1,794,453	1,716,516	1,538,503	1,482,961	1,457,741	1,556,953	1,457,841	773,258

HUMBJET NE RRJETIN E SHPERNDARJES 2009-2022(MWh)



	2009	2010	2011	2012	2013	2014	2015	2016	2017	2018	2019	2020	2021	2022
HUMBJE TEKNIKE NE TL (N/ST)	178,738	163,546	170,937	161,831	201,684	193,208	162,725	155,629	141,707	125,974	117,739	103,729	107,340	93,331
HUMBJE TEKNIKE NE ZONAT E OSSH	1,015,450	968,535	814,826	879,616	884,360	908,416	1,203,793	1,190,872	1,106,007	944,587	836,561	828,906	921,330	886,682
TOTALI I HUMBJEVE TEKNIKE OSSH	1,194,188	1,132,081	985,763	1,041,447	1,086,044	1,101,624	1,366,518	1,346,501	1,247,714	1,070,560	954,300	932,635	1,028,670	980,013
HUMBJE JOTOKNIKE OSSH	922,954	778,815	1,020,432	2,039,227	2,110,575	1,520,312	668,900	447,952	468,802	467,943	528,661	525,106	528,283	477,828
TOTALI I HUMBJEVE OSSH	2,117,142	1,910,896	2,006,195	3,080,674	3,196,618	2,621,936	2,035,418	1,794,453	1,716,516	1,538,503	1,482,961	1,457,741	1,556,953	1,457,841

Burimi: OSSH sha / (OSHEE Group sha)

Viti 2014	Te arketueshme		Faturuar 2014	arketimi per faturat e 2014	Arketimi per faturat e 2007-2013	Arketimi total	Te Arketueshme per energjine e faturuar ne vitin 2014		Ndryshimi I gjendjes se Llogarive te arketueshme gjate vitit 2014	Shuarje Detyrimesh me VKM nr 198, dt 03.04.2014
	2	5					7	9=(2-5)		
	71,374,447									
Janar	72,385,326	4,899,949		3,593,288	295,782	3,889,070		1,306,661	1,010,880	0
Shkurt	73,231,148	4,623,941		1,224,858	2,553,261	3,778,119		3,399,083	845,821	0
Mars	73,905,562	4,645,564		3,226,836	744,315	3,971,150		1,418,729	674,414	0
Prill	70,676,446	4,538,921		3,291,530	680,634	3,972,164		1,247,391	3,229,116	3,795,873
Maj	71,544,530	4,190,118		3,345,044	374,413	3,719,457		845,074	868,084	(397,423)
Qershor	72,209,337	4,025,464		3,065,523	295,134	3,360,657		959,941	664,807	
Korrik	72,816,893	4,097,547		3,184,902	305,088	3,489,991		912,644	607,556	
Gusht	73,694,774	4,299,885		3,115,141	311,467	3,426,607		1,184,744	877,881	(4,604)
Shtator	72,527,145	4,065,705		3,343,188	1,069,912	4,413,100		722,518	1,167,630	820,235
Tetor	72,630,240	4,280,796		3,647,110	457,224	4,104,334		633,686	103,095	73,367
Nentor	72,771,144	4,504,528		3,459,192	904,432	4,363,624		1,045,356	140,994	
Dhjetor	71,406,047	4,985,556		4,273,473	2,077,180	6,350,653		712,083	1,365,097	
Total	53,157,974			38,770,084	10,068,842	48,838,927		14,387,890		4,287,448

FATURIM-ARKETIMET DHE NDRYSHIMI I GJENDJES DEBITORE GJATE VITIT 2015 (000/LEKE)

Viti 2015	Te arketueshme		Faturuar 2015	arketimi per faturat e 2015	Arketimi per faturat e 2007-2014	Arketimi total	Te Arketueshme per energjine e faturuar ne vitin 2015		Ndryshimi I gjendjes se Llogarive te arketueshme gjate vitit 2015	Shuarje Detyrimesh
	2	5					7	9=(2-5)		
	71,406,047									
Janar	65,787,460	2		58,385	5,560,203	5,618,588		(58,383)	5,618,586	0
Shkurt	59,101,173	2		4,241,484	2,444,805	6,686,289		(4,241,482)	6,686,287	0
Mars	53,303,725	2		4,663,802	1,133,648	5,797,450		(4,663,800)	5,797,448	0
Prin	47,139,425	2		4,476,298	366,900	4,837,198		(4,476,296)	6,174,301	1,337,105
Maj	40,663,646	2		4,234,873	584,756	4,729,629		(4,234,871)	6,465,778	1,726,151
Qershor	36,200,965	2		4,081,633	309,420	4,391,053		(4,081,631)	4,462,681	71,630
Korrik	31,391,091	2		4,246,167	372,576	4,618,743		(4,246,165)	4,809,874	191,133
Gusht	26,213,833	2		4,481,964	354,383	4,836,347		(4,481,962)	5,177,258	340,913
Shtator	21,220,540	2		4,700,033	293,262	4,993,295		(4,700,031)	4,993,293	0
Tetor	21,053,851	2		4,541,794	308,818	4,850,612		142,130	166,689	0
Nentor	21,726,696	2		4,020,208	298,490	4,318,698		971,335	672,845	0
Dhjetor	22,570,251	2		5,872,243	277,740	5,028,688		1,121,295	843,555	0
Total	15,547,727			48,491,589	12,225,002	60,716,591		32,943,862		3,666,932

FATURIM-ARKETIMET DHE NDRYSHIMI I GJENDJES DEBITORE GJATE VITIT 2016 (000/LEKE)

Viti 2016	Te arketueshme		Faturuar 2016	arketimi per faturat e 2016	Arketimi per faturat e 2007-2015	Arketimi total	Te Arketueshme per energjine e faturuar ne vitin 2016		Ndryshimi I gjendjes se Llogarive te arketueshme gjate vitit 2016	Shuarje Detyrimesh
	2	5					7	9=(2-5)		
	68,803,189									
Janar	69,383,532	2		5,987,971	11,010	5,396,619	5,407,628	5,976,962	580,343	0
Shkurt	69,618,271	2		5,445,503	3,744,680	1,455,075	5,199,755	1,700,824	234,739	0
Mars	69,927,158	2		5,513,517	4,673,435	531,195	5,204,630	840,082	308,887	0
Prill	69,788,727	2		4,826,977	4,641,557	323,851	4,965,408	185,420	138,431	0
Maj	67,042,795	2		4,855,733	4,504,256	4,584,256	4,781,174	331,477	2,745,932	2,800,490
Qershor	67,501,589	2		4,525,728	4,283,847	245,814	4,499,663	331,881	454,794	0
Korrik	68,121,673	2		5,241,459	4,390,083	331,293	4,621,376	851,376	620,884	0
Gusht	68,364,412	2		5,309,834	4,799,986	267,109	5,067,095	509,848	242,739	0
Shtator	68,350,354	2		4,344,483	4,650,851	207,690	4,858,541	193,633	14,058	0
Tetor	68,499,705	2		4,834,628	4,480,377	204,901	4,685,278	354,252	149,351	0
Nentor	69,372,496	2		5,236,378	4,175,054	188,533	4,363,587	1,061,324	872,791	0
Dhjetor	70,720,061	2		6,410,681	4,854,705	208,411	5,063,116	1,555,976	1,347,565	0
Total	63,012,893			49,129,839	49,537,411	58,667,251		13,883,054		2,800,490

FATURIM-ARKETIMET DHE NDRYSHIMI I GJENDJES DEBITORE GJATE VITIT 2017 (000/LEKE)

Viti 2017	Te arketueshme		Faturuar 2017	arketimi per faturat e 2017	Arketimi per faturat e 2007-2016	Arketimi total	Te Arketueshme per energjine e faturuar ne vitin 2017		Ndryshimi I gjendjes se Llogarive te arketueshme gjate vitit 2017	Shuarje Detyrimesh
	2	5					7	9=(2-5)		
	70,720,061									
Janar	71,449,571	2		6,192,711	2,680	5,460,521	5,463,201	6,190,031	729,510	0
Shkurt	71,348,179	2		5,323,527	3,823,606	1,601,313	5,424,919	1,499,921	101,392	0
Mars	70,863,992	2		5,141,318	4,963,971	661,534	5,625,505	177,347	484,187	0
Prill	70,863,942	2		4,857,464	4,525,615	331,899	4,857,514	331,849	50	0
Maj	70,398,535	2		4,667,810	4,599,520	533,697	5,133,217	68,290	465,407	0
Qershor	70,787,603	2		4,675,924	4,055,720	231,137	4,286,856	620,204	389,068	0
Korrik	71,320,868	2		5,435,009	4,599,634	302,110	4,901,744	835,375	533,265	0
Gusht	71,661,546	2		5,635,939	4,996,203	299,058	5,295,261	639,736	340,678	0
Shtator	71,152,866	2		4,824,463	5,046,489	286,834	5,333,323	222,026	508,860	0
Tetor	71,047,597	2		4,902,445	4,759,610	247,923	5,007,534	142,834	105,089	0
Nentor	72,034,534	2		5,537,306	4,313,657	293,723	4,543,379	1,213,649	983,937	0
Dhjetor	72,848,682	2		6,347,229	5,153,618	376,452	5,530,070	1,193,611	817,158	0
Total										

FATURIM-ARKETIMET DHE NDRYSHIMI I GJENDJES DEBITORE GJATE VITIT 2018 (000/LEKE)

Viti 2018	Te arketueshme		Faturuar 2018	arketimi per faturat e 2018	Arketimi per faturat e 2007-2017	Arketimi total	Te Arketueshme per energjine e faturuar ne vitin 2018		Ndryshimi I gjendjes se Llogarive te arketueshme gjate vitit 2018	Shuarje Detyrimesh
	2	5					7	9=(2-5)		
	72,848,682									
Janar	72,669,803	2		5,939,299	62,280	6,055,898	6,118,178	5,877,019	178,879	0
Shkurt	72,671,709	2		5,685,334	3,857,605	1,825,823	5,683,429	1,827,729	1,905	0
Mars	72,336,005	2		5,680,352	5,325,171	690,885	6,016,056	355,181	335,704	0
Prill	71,388,405	2		4,671,224	5,191,294	427,530	5,618,824	520,070	947,600	0
Maj	70,904,609	2		4,731,173	4,839,352	375,617	5,214,970	108,179	483,797	0
Qershor	71,142,033	2		4,976,161	4,395,221	343,516	4,738,737	580,940	237,425	0
Korrik	71,320,917	2		5,403,874	4,895,796	329,195	5,224,991	508,078	178,883	0
Gusht	71,608,055	2		5,805,751	5,141,751	376,861	5,518,612	664,000	287,139	0
Shtator	71,254,995	2		5,047,859	5,088,650	312,269	5,400,919	40,791	353,061	0
Tetor	70,741,012	2		4,975,893	5,162,026	327,849	5,489,875	186,133	513,982	0
Nentor	71,270,659	2		5,318,350	4,317,124	471,580	4,788,703	1,001,226	529,647	0
Dhjetor	71,896,770	2		6,625,289	5,579,121	420,120	5,999,241	1,046,168	626,048	0
Total										

FATURIM-ARKETIMET DHE NDRYSHIMI I GJENDJES DEBITORE GJATE VITIT 2019 (000/LEKE)

Viti 2019	Te arketueshme		Faturuar 2019	arketimi per faturat e 2019	Arketimi per faturat e 2007-2018	Arketimi total	Te Arketueshme per energjine e faturuar ne vitin 2019		Ndryshimi I gjendjes se Llogarive te arketueshme gjate vitit 2019	Shuarje Detyrimesh
	2	5					7	9=(2-5)		
	71,896,707									
Janar	72,594,758	2		6,710,114	11,908	6,000,155	6,012,063	6,698,206	698,051	0
Shkurt	72,200,340	2		5,819,929	4,371,736	1,842,611	6,214,348	1,448,193	394,418	0
Mars	71,887,840	2		5,496,920	5,066,376	743,045	5,809,420	430,545	312,500	0
Prill	71,416,559	2		5,155,722	5,183,086	443,917	5,627,003	27,364	471,281	0
Maj	71,210,144	2		5,075,626	4,909,283	372,758	5,282,041	166,343	206,415	0
Qershor	71,763,430	2		5,324,553	4,464,984	306,283	4,771,267	859,569	553,286	0
Korrik	71,886,698	2		5,684,531	5,061,596	499,667	5,561,263	622,935	123,268	0
Gusht	72,343,496	2		6,100,924	5,315,417	328,709	5,644,126	785,507	456,798	0
Shtator	71,822,038	2		5,207,417	5,446,625	282,250	5,728,875	239,208	521,4	

Korrik	73,865,820	5,588,061	4,444,694	282,993	4,727,687	1,143,367	860,374	0
Gusht	74,144,786	5,606,760	5,058,892	268,903	5,327,794	547,868	278,966	0
Shator	74,000,809	5,327,559	5,096,602	374,935	5,471,536	230,957	143,977	0
Tetor	73,790,738	5,174,314	5,025,382	359,002	5,533,316	148,932	210,070	0
Nentor	74,671,974	5,615,129	4,483,130	250,764	4,733,894	1,132,000	881,235	0
Dhjetor	75,609,639	6,641,071	5,412,845	290,561	5,703,406	1,228,226	937,665	0
Total								

FATURIM-ARKETIMET DHE NDRYSHIMI I GJENDJES DEBITORE GJTE VITIT 2021 (000/LEKE)

Viti 2021	Te arketueshme	Faturuar 2021	arketimi per faturat e 2021	Arketimi per faturat e 2007-2020	Arketimi total	Te Arketueshme per energjine e faturuar ne vitin 2021	Ndryshimi I gjendjes se Llogarive te arketueshme gjate vitit 2021	Shuarje Detyrimesh
	75,609,639	2	5	7	6=5+7	9=(2-5)		
Janar	76,272,477	6,400,370	19,639	5,717,893	5,737,532	6,380,731	662,838	0
Shkurt	76,826,391	6,245,453	3,770,254	1,921,284	5,691,538	2,475,198	553,914	0
Mars	76,605,803	6,158,373	5,690,524	688,438	6,378,961	467,849	220,588	0
Prill	76,818,750	5,817,548	5,302,816	301,785	5,604,601	514,732	212,947	0
Maj	76,122,770	5,190,837	5,558,138	328,680	5,886,818	367,301	695,980	0
Qershor	75,924,651	5,548,398	5,417,458	328,959	5,746,417	130,840	198,119	0
Korrik	76,924,743	6,377,974	5,853,270	324,612	6,177,882	1,324,705	1,000,093	0
Gusht	77,478,064	6,554,952	5,648,400	353,231	6,001,630	906,552	553,321	0
Shator	76,933,233	5,401,032	5,687,762	258,102	5,945,864	286,730	544,832	0
Tetor	76,284,525	5,544,032	5,739,826	452,913	6,192,739	195,794	648,707	0
Nentor	76,704,823	5,794,416	5,080,754	293,364	5,374,118	713,662	420,298	0
Dhjetor	78,394,397	7,572,744	5,583,186	299,984	5,883,170	1,989,557	1,689,574	0
Total								

FATURIM-ARKETIMET DHE NDRYSHIMI I GJENDJES DEBITORE GJTE VITIT 2022 (000/LEKE)

Viti 2022	Te arketueshme	Faturuar 2022	arketimi per faturat e 2022	Arketimi per faturat e 2007-2022	Arketimi total	Te Arketueshme per energjine e faturuar ne vitin 2022	Ndryshimi I gjendjes se Llogarive te arketueshme gjate vitit 2022	Shuarje Detyrimesh
	78,394,397	2	5	7	6=5+7	9=(2-5)		
Janar	79,437,476	7,902,272	4,793,436	2,065,757	6,859,193	3,108,836	1,043,079	0
Shkurt	80,288,829	7,515,728	4,569,541	2,094,835	6,664,376	2,946,187	851,353	0
Mars	80,426,273	7,857,071	6,691,413	1,028,214	7,719,627	1,165,658	137,444	0
Prill	79,617,380	6,186,945	6,531,117	464,721	6,995,838	344,172	808,893	0
Maj	79,499,359	6,188,303	5,969,488	336,836	6,306,324	218,815	118,021	0
Qershor	79,997,520	6,553,744	5,610,349	445,234	6,055,583	943,395	498,162	0
Korrik	80,005,681	6,553,744	6,230,846	314,737	6,545,583	322,898	8,161	0
Gusht	79,791,653	7,358,491	7,103,150	469,370	7,572,519	355,341	214,028	0
Shator	78,554,734	6,162,925	7,005,112	394,733	7,399,844	842,187	1,236,919	0
Tetor	77,962,798	5,848,663	6,104,850	335,749	6,440,598	256,187	591,935	0
Nentor	78,481,014	6,502,315	798,011	5,186,087	5,984,099	5,704,303	518,216	0
Dhjetor	79,249,438	7,458,986	6,200,688	489,874	6,690,562	1,258,298	768,423	0
Total		82,089,187			81,234,146			

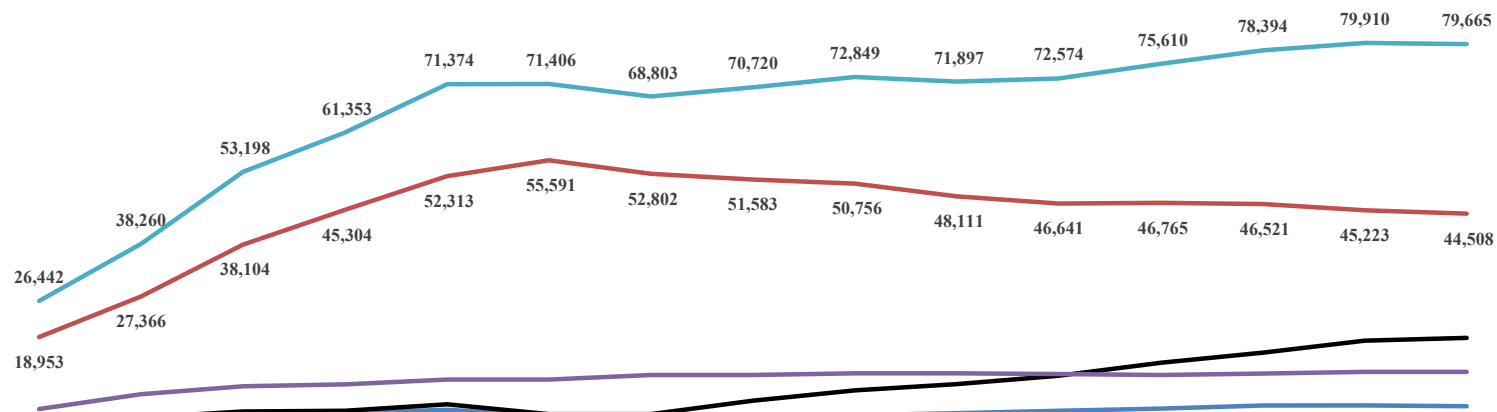
FATURIM-ARKETIMET DHE NDRYSHIMI I GJENDJES DEBITORE GJTE VITIT 2023 (000/LEKE)

Viti 2023	Te arketueshme	Faturuar 2023	arketimi per faturat e 2023	Arketimi per faturat e 2007-2023	Arketimi total	Te Arketueshme per energjine e faturuar ne vitin 2023	Ndryshimi I gjendjes se Llogarive te arketueshme gjate vitit 2023	Shuarje Detyrimesh
	79,910,252	2	5	7	6=5+7	9=(2-5)		
Janar	80,265,490	7,236,860	17,571	6,864,050	6,881,621	7,219,288	355,238	0
Shkurt	80,928,747	7,477,014	4,674,206	2,139,553	6,813,758	2,802,809	663,256	0
Mars	80,025,935	6,588,875	6,660,084	831,603	7,491,687	71,209	902,812	0
Prill	80,223,225	6,321,511	5,757,211	367,010	6,124,221	564,300	197,290	0
Maj	79,402,801	5,993,172	6,505,113	308,483	6,813,596	511,941	820,424	0
Qershor	79,665,073	6,074,125	5,550,743	261,110	5,811,853	523,382	262,272	0
Korrik								
Gusht								
Shator								
Tetor								
Nentor								
Dhjetor								
Total								

Burimi: FSHU sha / (OSHEE Group sha)

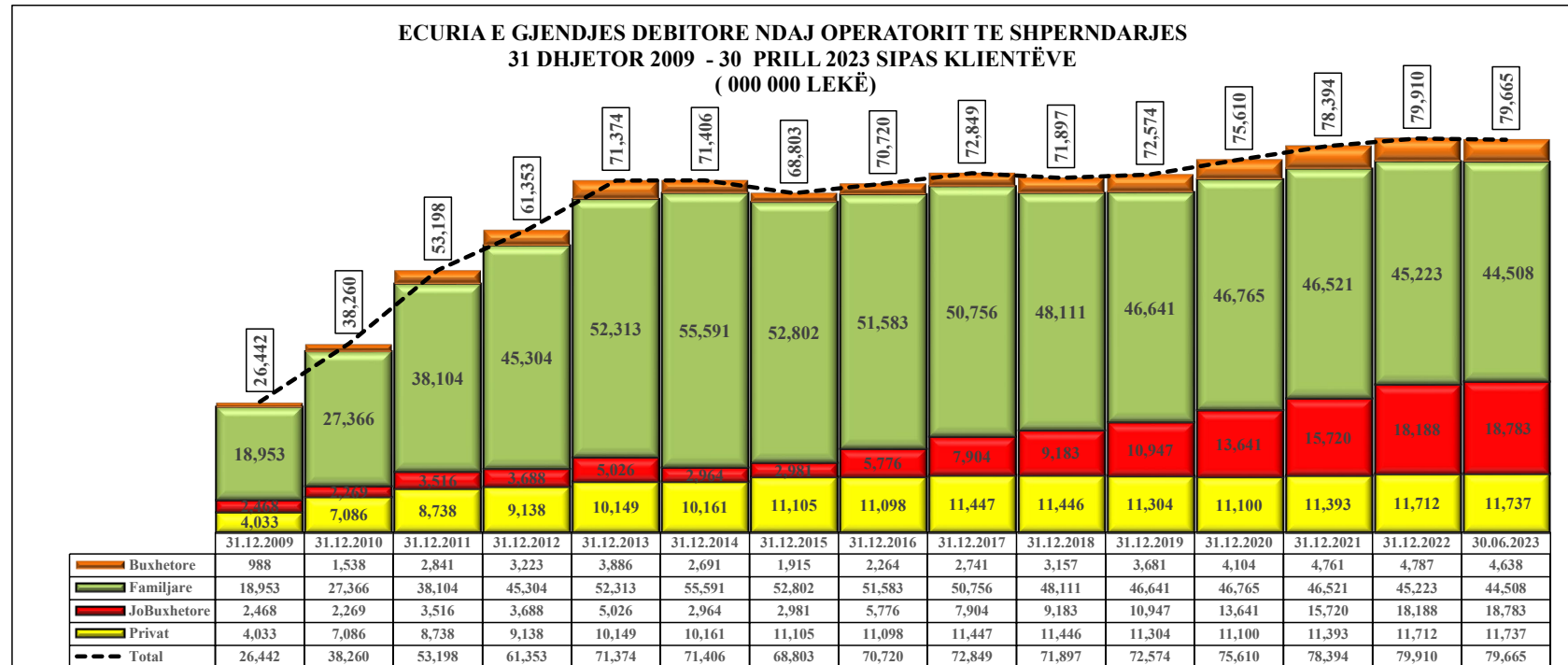
	31.12.2009	31.12.2010	31.12.2011	31.12.2012	31.12.2013	31.12.2014	31.12.2015	31.12.2016	31.12.2017	31.12.2018	31.12.2019	31.12.2020	31.12.2021	31.12.2022	30.06.2023
Buxhetore	988	1,538	2,841	3,223	3,886	2,691	1,915	2,264	2,741	3,157	3,681	4,104	4,761	4,787	4,638
Familjare	18,953	27,366	38,104	45,304	52,313	55,591	52,802	51,583	50,756	48,111	46,641	46,765	46,521	45,223	44,508
JoBuxhetore	2,468	2,269	3,516	3,688	5,026	2,964	2,981	5,776	7,904	9,183	10,947	13,641	15,720	18,188	18,783
Privat	4,033	7,086	8,738	9,138	10,149	10,161	11,105	11,098	11,447	11,446	11,304	11,100	11,393	11,712	11,737
Total	26,442	38,260	53,198	61,353	71,374	71,406	68,803	70,720	72,849	71,897	72,574	75,610	78,394	79,910	79,665

**ECURIA E GJENDJES DEBITORE NDAJ OPERATORIT TE SHPERNDARJES
31 DHJETOR 2009 - 30 PRILL 2023 SIPAS KLIENTËVE
(000 000 LEKË)**



	31.12.2009	31.12.2010	31.12.2011	31.12.2012	31.12.2013	31.12.2014	31.12.2015	31.12.2016	31.12.2017	31.12.2018	31.12.2019	31.12.2020	31.12.2021	31.12.2022	30.06.2023
Buxhetore	988	1,538	2,841	3,223	3,886	2,691	1,915	2,264	2,741	3,157	3,681	4,104	4,761	4,787	4,638
Familjare	18,953	27,366	38,104	45,304	52,313	55,591	52,802	51,583	50,756	48,111	46,641	46,765	46,521	45,223	44,508
JoBuxhetore	2,468	2,269	3,516	3,688	5,026	2,964	2,981	5,776	7,904	9,183	10,947	13,641	15,720	18,188	18,783
Privat	4,033	7,086	8,738	9,138	10,149	10,161	11,105	11,098	11,447	11,446	11,304	11,100	11,393	11,712	11,737
Total	26,442	38,260	53,198	61,353	71,374	71,406	68,803	70,720	72,849	71,897	72,574	75,610	78,394	79,910	79,665

	31.12.2009	31.12.2010	31.12.2011	31.12.2012	31.12.2013	31.12.2014	31.12.2015	31.12.2016	31.12.2017	31.12.2018	31.12.2019	31.12.2020	31.12.2021	31.12.2022	30.06.2023
Privat	4,033	7,086	8,738	9,138	10,149	10,161	11,105	11,098	11,447	11,446	11,304	11,100	11,393	11,712	11,737
JoBuxhetore	2,468	2,269	3,516	3,688	5,026	2,964	2,981	5,776	7,904	9,183	10,947	13,641	15,720	18,188	18,783
Familjare	18,953	27,366	38,104	45,304	52,313	55,591	52,802	51,583	50,756	48,111	46,641	46,765	46,521	45,223	44,508
Buxhetore	988	1,538	2,841	3,223	3,886	2,691	1,915	2,264	2,741	3,157	3,681	4,104	4,761	4,787	4,638
Total	26,442	38,260	53,198	61,353	71,374	71,406	68,803	70,720	72,849	71,897	72,574	75,610	78,394	79,910	79,665

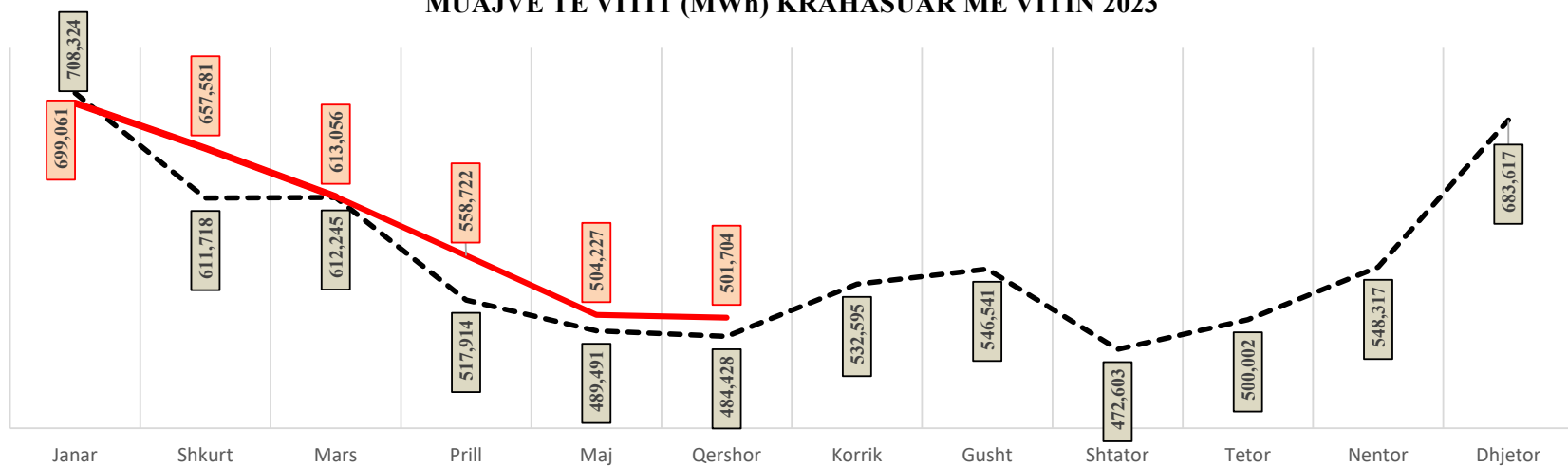


Burimi: FSHU sha / (OSHEE Group sha)

	Janar	Shkurt	Mars	Prill	Maj	Qershor	Korrik	Gusht	Shtator	Tetor	Nentor	Dhjetor	VITI
2009	644,987	568,719	589,279	462,709	448,118	427,694	467,863	493,772	439,604	489,635	557,554	639,797	6,229,731
2010	675,343	608,940	610,583	506,275	476,500	464,120	499,241	512,024	460,893	509,793	532,126	660,665	6,516,503
2011	708,264	623,208	634,087	536,286	533,564	495,139	545,315	567,282	512,979	551,132	619,655	710,870	7,037,781
2012	733,973	680,054	596,982	537,950	483,891	489,723	536,891	540,566	469,527	484,706	548,289	749,398	6,851,949
2013	743,846	665,392	673,578	545,600	502,945	511,390	546,696	565,789	493,056	532,555	589,808	774,403	7,145,060
2014	733,468	631,678	645,837	578,948	541,016	501,088	530,554	556,098	492,427	537,280	546,419	640,431	6,935,244
2015	686,041	591,978	594,775	514,282	472,405	465,730	536,160	529,208	459,012	476,969	519,281	649,026	6,494,867
2016	671,884	559,772	573,419	469,803	477,468	463,248	509,916	514,034	451,153	480,236	540,024	688,760	6,399,717
2017	715,886	562,270	545,214	493,731	475,055	485,386	529,805	543,145	451,103	482,629	546,256	667,841	6,498,322
2018	659,778	590,823	597,595	468,417	467,468	468,885	508,892	539,134	465,468	471,407	517,882	681,162	6,436,911
2019	735,813	586,992	559,331	500,485	501,061	500,729	533,842	565,788	471,684	472,833	507,920	639,953	6,576,432
2020	708,611	607,803	589,581	489,236	464,183	463,789	527,801	533,336	482,358	506,280	562,127	669,977	6,605,082
2021	724,554	629,962	662,183	590,810	504,970	519,563	591,485	603,872	485,288	523,606	552,840	747,790	7,136,936
2022	774,084	656,456	698,991	556,264	504,224	525,509	591,875	587,527	481,886	480,961	536,263	650,564	7,044,604
2023	699,061	657,581	613,056	558,722	504,227	501,704							

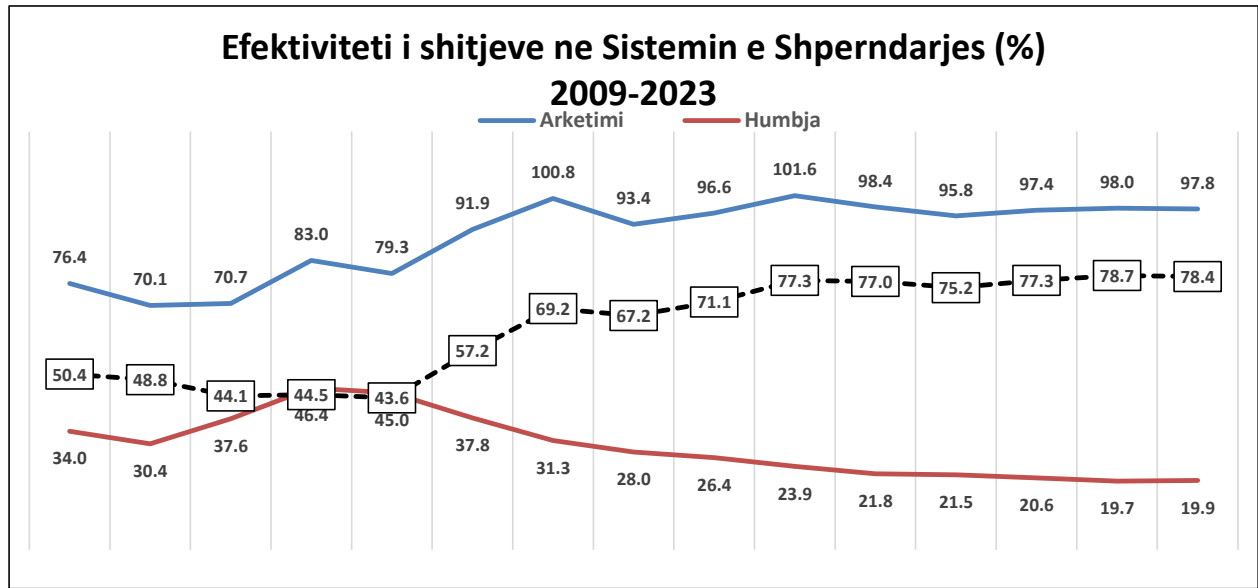
	Janar	Shkurt	Mars	Prill	Maj	Qershor	Korrik	Gusht	Shtator	Tetor	Nentor	Dhjetor
Mesatarja	708,324	611,718	612,245	517,914	489,491	484,428	532,595	546,541	472,603	500,002	548,317	683,617
2023	699,061	657,581	613,056	558,722	504,227	501,704						

MESATARJA 14 VJEÇARE E ENERGJISË TOTALE NË RRJETIN E SHPËRNDARJES SIPAS MUAJVE TË VITIT (MWh) KRAHASUAR ME VITIN 2023



Burimi OSHEE sha

	2009	2010	2011	2012	2013	2014	2015	2016	2017	2018	2019	2020	2021	2022	2023(6m)
Arketimi	76.4	70.1	70.7	83.0	79.3	91.9	100.8	93.4	96.6	101.6	98.4	95.8	97.4	98.0	97.8
Humbja	34.0	30.4	37.6	46.4	45.0	37.8	31.3	28.0	26.4	23.9	21.8	21.5	20.6	19.7	19.9
Efektiviteti	50.4	48.8	44.1	44.5	43.6	57.2	69.2	67.2	71.1	77.3	77.0	75.2	77.3	78.7	78.4



Burimi FSHU (OSHEE Group sha)

ALOKIMI KAPACITETEVE 2023

Ankandi	Periudha	Shqiperi - Mali Zi						Shqiperi - Greqi						Shqiperi - Kosove											
		ATC e ofruar ne		ATC e shitur ne		Cmimi Ankandit		ATC e ofruar ne Ankand		ATC e shitur ne Ankand		Cmimi Ankandit		ATC e ofruar ne Ankand		ATC e shitur ne Ankand		Cmimi Ankandit							
		Export [MW]	Import [MW]	Export [MW]	Import [MW]	Export [Euro/MWh]	Import [Euro/MWh]	Export [MW]	Import [MW]	Export [MW]	Import [MW]	Export [Euro/MWh]	Import [Euro/MWh]	Export [MW]	Import [MW]	Export [MW]	Import [MW]	Export [Euro/MWh]	Import [Euro/MWh]						
Janar	01.01.2023-31.01.2023	150	100	150	100	3.14	1.62	200	150	200	150	3.05	3.55	200	200	200	200	1.28	0.92						
Shkurt	01.02.2023-28.02.2023	100	100	100	100	4.5	3.58	200	100	200	100	10.33	3.5	200	200	200	200	2.1	1.21						
Mars	01.03.2023-05.03.2023	100	100	100	100	2.77	2.21	200	200	200	200	8.22	0.63	200	200	200	200	1.44	0.88						
	06.03.2023-10.03.2023	50	50	50	50	4.44	3.88	100	100	98	97	8.22	0.63												
Prill	11.03.2023-31.03.2023	100	100	100	100	2.77	2.21	200	200	200	200	8.22	0.63	200	200	200	200	1.21	0.91						
	01.04.2023-02.04.2023	100	100	100	100	2.91	1.2	200	200	200	200	6.98	1.24												
	02.04.2023-03.04.2023							50	50	48	47	1.21	0.91												
	03.04.2023-04.04.2023							100	100	97	99	6.98	1.24												
	04.04.2023-04.04.2023	50	50	49	49	2.91	1.2	50	200	45	200	6.98	1.24							200	200	200	200	1.21	0.91
	05.04.2023-11.04.2023							200		200		6.98													
	12.04.2023-17.04.2023							50		45		6.98													
18.04.2023-18.04.2023	100	100	100	100	2.91	1.2	50	200	46	200	7.50	0.58	200	200	200	199	0.14	0.08							
19.04.2023-19.04.2023							0		0										0	0					
20.04.2023-28.04.2023	100	100	100	100	2.91	1.2	50	200	46	200	7.50	0.58	200	200	200	199	0.14	0.08							
29.04.2023-30.04.2023							200		200										46	200					
Maj	01.05.2023-01.05.2023	100	100	100	100	1.55	0.9	50	200	46	200	7.50	0.58	200	200	200	199	0.14	0.08						
02.05.2023-06.05.2023	0							0	0	0															
07.05.2023-21.05.2023	50							200	46	200															
22.05.2023-31.05.2023	200							200	46	200															
Qershor	01.06.2023-30.06.2023	100	100	100	100	2.31	1.75	200	200	200	200	10.00	0.66	200	200	200	200	0.88	0.64						

Disbalancat mujore [MWh] 2023 (6-MUJ)

Pale Pergjegjese Balancuese	JANAR		SHKURT		MARS		PRILL		MAJ		QERSHOR		Dis. Negative [MWh]	Dis. Pozitive [MWh]
	Dis. Negative [M]	Dis. Pozitive [M]	Dis. Negative [M]	Dis. Pozitive [M]	Dis. Negative [M]	Dis. Pozitive [M]	Dis. Negative [M]	Dis. Pozitive [M]	Dis. Negative [M]	Dis. Pozitive [M]	Dis. Negative [M]	Dis. Pozitive [M]		
KURUM INTERNATIONAL	923	304	257	22	210	26	535	278	1,338	259	988	296	4,250	1,185
DEVOLL HP	14	45	31	43	17	65	23	51	24	62	26	53	135	319
DRAGOBIJA ENERGY	2	64	1	60	3	89	3	105	75	137	8	161	92	616
GEN-I								31	43				43	31
ENER TRADE	970	225	542	182	761	554	1,132	218	1,295	281	995	516	5,694	1,975
ENERGY 24	121	215	118	150	132	270	177	339					548	974
NOA	107	2	63	20	196	116	393	480	279	636	209	446	1,247	1,699
AYEN AS ENERGJI	306	125	144	75	140	115	85	80	132	69	88	74	894	537
GSA	125	1,641	760	151	1,681	490	1,499	30	1,871	173	1,945	94	7,881	2,579
Furnizuesi i Tregut të Lirë FTL (OSHEE Grup)	5,671	27,980	3,452	26,029	6,621	24,823	6,634	24,902	6,236	11,822	3,977	15,316	32,590	130,872
KESH (Pale Pergjegjese Balancuese)	3,574	2,150	761	1,797	349	3,128	702	2,801	756	1,936	2,740	1,822	8,882	13,634
EZ-5 ENERGY	126	126	178	45	288	110	221	182	291	224	344	139	1,447	825
KOSTT	12,947	2,032	10,885	2,448	9,005	4,090	8,371	4,996	5,256	6,941	2,938	7,811	49,403	28,319
Fat Sis Ayen Swissgrid	1,322	2,661	332	2,987	1,975	1,457	1,117	1,616	1,781	1,933	1,285	863	7,813	11,518
Ofruesi i Sherbimit te Balancimit	Ulje Gjenerimi	Rritje Gjenerimi	Ulje Gjenerimi	Rritje Gjenerimi	Ulje Gjenerimi	Rritje Gjenerimi	Ulje Gjenerimi	Rritje Gjenerimi	Ulje Gjenerimi	Rritje Gjenerimi	Ulje Gjenerimi	Rritje Gjenerimi	Ulje Gjenerimi [MWh]	Rritje Gjenerimi [MWh]
Devoll HP Energjia Akt								2					-	2
Devoll HP Energjia Shtese Akt													-	-
KURUM INTERNATIONAL Energjia Akt									15	5			15	5
Ayen AS Energji Energjia Akt			170		319		84		197				770	-
Ayen AS Energji Energjia Shtese Akt													-	-
KESH sh.a. Energjia Akt	10,340	4,943	11,233	3,901	9,882	7,363	10,554	5,985	7,702	5,204	9,165	2,640	58,876	30,036
KESH sh.a. Energjia Shtese Akt	9,453	3,510	8,201	3,047	7,597	2,608	7,992	2,857	3,209	1,629	3,904	798	40,356	14,449
TOTALI	46,000	46,023	37,129	40,957	39,177	45,304	39,520	44,951	30,501	31,310	28,612	31,030	220,939	239,574
Disbalancat mujore [MWh]		23		3,828		6,127		5,431		809		2,418		18,635

KLIENDET NE TL	KLIENDET E "KUALIFIKUAR" PER VITIN 2023												
	Energjia e faturuar ne [MWh]												
	Janar	Shkurt	Mars	Prill	Maj	Qershor	Korrik	Gusht	Shtator	Tetor	Nentor	Dhjetor	2023
EL220-L220KURUM/337	17,724	3,540	1,712	15,407	33,141	30,601							102,125
Titan T1,T2	9,331	4,543	7,006	10,642	11,097	10,636							53,255
FUSHE KRUIJE 220kV-T2/058	-	409	3,878	1,910	2,903	1,997							11,097
N/ST 220/6,3Colacent-T1/336	631	910	2,421	1,371	1,130	2,168							8,630
N/ST i GSA EL 110kV-T1/694	10,555	15,188	-	-	-	-							25,742
N/ST i GSA EL 110kV-T2/960	-	219	15,779	16,873	17,440	16,979							67,290
N/ST I CWI Albania T1/148	477	464	469	574.19	516	484							2,984
N/ST i AES EL 110kV-T1/690	30	48	-	-	1,491	6,969							8,539
N/ST I AES EL 110kV-T2/692	111	84	1,175	6,722	5,719	-							13,810
HEC Moglice T1,T2,T3	1	2	3	1	2.29	2							11
HEC Peshqesh-T1/633	7	20	4	3.52	6	20							61
Lajthiza T1/742	19	61	1	0.77	8	138							227
HEC Ashta1-T1,HEC Ashta2-T1,	0.13	-	-	0.00	-	-							0
HEC Banje T1,T2	14	14	18	15	25	18							103
HEC Fang-T1,T2.	10	27	19	36	34	48							173
Gjenerim KURUM	9.11	0	1	16.25	0.93	7							34
FERRO KROM-F1,F2,F3,F4	60	57	200	6,272	6,528	6,474							19,590
TOTAL	38,979	25,586	32,684	59,843	80,042	76,540							313,673

Burimi: OST sha

Devijimet nga programi interkoneksionit 2023 (6-mujori)

Data	Minus = Hyrje		Plus = Dalje										2023
	Janar	Shkurt	Mars	Prill	Maj	Qershorr	Korrik	Gusht	Shtator	Tetor	Nentor	Dhjetor	
1	94	-18	44	54	165	120							459
2	156	93	189	297	37	166							938
3	-25	202	54	105	168	108							613
4	0	92	-47	-74	77	200							249
5	126	57	-57	65	251	303							745
6	69	10	85	-33	73	199							402
7	-18	-185	256	49	271	28							399
8	8	31	213	114	200	203							769
9	7	147	52	-20	-9	108							284
10	482	268	400	-64	76	10							1,171
11	-26	8	997	206	7	122							1,314
12	131	-3	410	192	63	36							830
13	128	200	267	214	-82	233							960
14	-1,084	805	67	465	-91	337							499
15	-41	143	-621	221	477	123							302
16	-1,634	194	40	142	363	440							-455
17	738	280	13	-16	131	646							1,792
18	213	166	182	326	150	527							1,563
19	682	337	157	360	3	323							1,862
20	787	155	199	155	25	-8							1,313
21	259	4	243	591	18	-196							919
22	138	-292	164	303	103	-694							-277
23	234	74	252	357	194	-1,971							-861
24	587	189	102	280	-15	54							1,197
25	-134	142	222	567	256	267							1,319
26	-30	459	202	477	121	-37							1,192
27	139	873	302	392	141	90							1,937
28	25	134	493	289	384	576							1,901
29	-246	0	27	79	136	225							221
30	98	0	223	406	158	212							1,098
31	118	0	396	0	51	0							565
Total	1,983	4,564	5,524	6,498	3,904	2,747							25,220

Burimi OST sha

Transaksionet e energji elektrike të Pjesëmarrësve të Tregut në (MWh) për 2023

Nr.	Subjekti	Lloji transaksionit	Janar	Shkurt	Mars	Prill	Maj	Qershor	Total (MWh)		
1	DEVOLLI HP	AL-GR Greece - IN	-1,465	-2,158	-1,733	-5,362	-1,278	-1,802	-13,998		
		AL-RS Kosovo - IN	0	0	0	0	0	0	0		
		AL-ME Monte Negro - IN	-21,339	-9,995	-11,667	-5,826	-17,106	-6,507	-72,438		
		Total IN	-22,804	-12,153	-13,400	-11,188	-18,384	-8,307	-86,436		
		AL-GR Greece - OUT	35,337	25,803	21,932	12,633	15,522	18,106	128,666		
		AL-RS Kosovo - OUT	0	0	0	0	0	0	0		
		AL-ME Monte Negro - OUT	36,517	39,169	41,265	34,421	23,001	48,389	232,762		
		Total OUT	71,854	64,232	63,197	47,054	38,523	66,588	351,418		
		Pradhimi	49,050	51,879	49,797	35,866	19,878	58,505	264,975		
		Total Pradhimi	49,050	51,879	49,797				264,975		
		Transaksionet e brendshme	Blerje AVEN Energy Trading					-261		-261	
		Blerje GEN4							-16	-16	
		Total transaksione	0	0	0	0	-261	270	254	-7	
2	AVEN Energy Trading	AL-GR Greece - IN	0	0	-471	-1,076	-706	-1,623	-3,876		
		AL-RS Kosovo - IN	0	0	0	-725	-4,585	-7,084	-12,394		
		AL-ME Monte Negro - IN	0	0	-1,999	-2,077	-3,294	-1,688	-9,064		
		Total IN	0	0	-2,470	-4,878	-8,585	-10,395	-25,974		
		AL-GR Greece - OUT	3,612	0	0	63	0	0	0	3,675	
		AL-RS Kosovo - OUT	0	0	144	927	417	0	0	1,488	
		AL-ME Monte Negro - OUT	1,023	0	1	313	3,182	0	0	4,519	
		Total OUT	4,635	0	145	1,303	3,599	0	0	9,625	
		Total Pradhimi	55,438.0	51,879	46,075.6	32,952.0	26,863.0	11,226.0	201,094.6		
		Transaksionet e brendshme	Blerje AVEN AS Energi	-3,612	-146	574	-3,278	-6,281	-3,954	-17,842	
		Shitje AVEN AS Energi						74		74	
		Shitje Kurum International			265					265	
		Blerje Kurum International				-54				-54	
Blerje KESH	-1,023							-1,023			
Blerje EZS ENERGY				-126	-216	-240		-582			
Shitje EZS ENERGY					3,331	688	52	3,971			
Blerje Danske Commodities							-10	-10			
Shitje DEVOLLI HP						261		261			
Blerje KESH						-4,980	-240	-5,220			
Shitje NOA ENERGY TRADE	146	2,634	3,961	3,961	15,491	14,772	37,085	70,085			
Blerje NOA ENERGY TRADE				562	-41	-41	-463	-463			
Total transaksione	-4,435	0	2,325	3,175	5,027	10,393	16,423				
3	AVEN AS Energi	AL-GR Greece - IN	0	0	0	0	0	0	0		
		AL-RS Kosovo - IN	-218	0	0	0	-9	0	-227		
		AL-ME Monte Negro - IN	-2,823	-642	-871	-501	-1,257	-199	-6,295		
		Total IN	-3,043	-642	-871	-501	-1,266	-199	-6,522		
		AL-GR Greece - OUT	12,744	13,755	23,945	15,754	2,141	2,383	70,120		
		AL-RS Kosovo - OUT	17,954	1,599	828	1,758	6,580	871	28,419		
		AL-ME Monte Negro - OUT	24,163	13,998	22,000	13,291	13,941	4,317	91,310		
		Total OUT	54,861	28,344	46,773	30,778	21,922	7,571	189,849		
		Total Pradhimi	55,438.0	28,448.0	46,075.6	32,952.0	26,863.0	11,226.0	201,094.6		
		Transaksionet e brendshme	Shitje AVEN Energy Trading	3,612	146	-574	3,278	6,281	3,954	17,842	
		Blerje AVEN Energy Trading						-74		-74	
		Total transaksione	3,612	146	-574	3,278	6,281	3,954	17,768		
		4	ENERGI ASHTA	AL-GR Greece - IN	0	0	0	0	0	0	0
AL-RS Kosovo - IN	0			0	0	0	0	0	0		
AL-ME Monte Negro - IN	0			0	0	0	0	0	0		
Total IN	0			0	0	0	0	0	0		
AL-GR Greece - OUT	0			0	0	0	0	0	0		
AL-RS Kosovo - OUT	0			0	0	0	0	0	0		
AL-ME Monte Negro - OUT	0			0	0	0	0	0	0		
Total OUT	0			0	0	0	0	0	0		
Total Pradhimi	35,398			29,792	21,378	20,285	28,274	19,965	155,092		
Transaksionet e brendshme	Shitje FTI			35,398	29,792	21,378	20,285	28,274	19,965	155,092	
Total transaksione	35,398			29,792	21,378	20,285	28,274	19,965	155,092		
5	GEN4			AL-GR Greece - IN	-130	-2,003	-5,380	-2,377	-788	-13,233	-24,921
				AL-RS Kosovo - IN	-27,677	-24,048	-11,081	-22,804	-19,182	-17,814	-122,606
		AL-ME Monte Negro - IN	-16,619	-6,754	-30,870	-13,928	-8,239	-8,162	-84,992		
		Total IN	-44,426	-33,485	-47,331	-39,109	-28,209	-39,209	-231,790		
		AL-GR Greece - OUT	49,482	22,447	33,062	21,762	25,168	23,475	184,416		
		AL-RS Kosovo - OUT	1,185	2,199	5,825	3,577	1,540	9,157	23,119		
		AL-ME Monte Negro - OUT	7,018	14,869	6,017	7,739	2,058	15,255	52,986		
		Total OUT	57,685	39,515	47,331	39,078	28,753	47,887	260,521		
		Total Pradhimi	-13,199	-6,030	0	0	-480	-8,424	-28,133		
		Transaksionet e brendshme	Blerje KURUM	-40						-40	
		Shitje DEVOLLI HP						270		270	
		Shitje DEVOLLI HP						16		16	
		Total transaksione	-13,239	-6,030	0	0	-480	-8,678	-28,427		
6	GSA	AL-GR Greece - IN	0	-2,116	-4,791	-710	0	-3,231	-10,848		
		AL-RS Kosovo - IN	-17,880	-27,402	-33,503	-22,545	-31,204	-24,294	-156,918		
		AL-ME Monte Negro - IN	-13,000	-4,928	-5,431	-11,786	-11,798	-2,750	-49,603		
		Total IN	-30,880	-34,446	-43,725	-35,041	-43,002	-30,778	-217,459		
		AL-GR Greece - OUT	56,354	20,229	20,825	16,730	19,743	20,752	148,239		
		AL-RS Kosovo - OUT	21,678	500	3,007	0	4,396	13,994	43,625		
		AL-ME Monte Negro - OUT	4,900	366	0	297	579	2,802	8,944		
		Total OUT	76,932	21,104	23,472	17,027	24,718	37,548	200,802		
		Total Pradhimi	12,448	16,608	20,283	18,014	19,396	19,267	105,246		
		Transaksionet e brendshme	Blerje KESH	-57,283	-2,828			-21,000	-28,640	-109,751	
		Blerje ENER TRADE						-1,600		-1,600	
		Blerje KURUM	-820							-820	
		Shitje KURUM						21,488		21,488	
Total transaksione	-46,053	13,432	20,283	18,014	18,244	-7,273	16,657				
7	DANSKE COMMODITIES	AL-GR Greece - IN	-257	-5,341	-4,741	-5,370	-795	-8,357	-25,801		
		AL-RS Kosovo - IN	-20,925	-4,137	-6,623	-8,649	-8,113	-17,414	-65,881		
		AL-ME Monte Negro - IN	-8,316	-16,297	-13,186	-12,801	-2,240	-3,578	-60,564		
		Total IN	-29,538	-25,905	-24,550	-26,900	-11,148	-33,349	-151,206		
		AL-GR Greece - OUT	18,926	19,060	16,439	14,281	19,839	18,971	107,462		
		AL-RS Kosovo - OUT	1,761	9,054	4,846	5,441	7,047	3,704	32,783		
		AL-ME Monte Negro - OUT	12,451	6,131	3,265	7,178	27,057	10,729	66,811		
		Total OUT	33,138	34,245	24,550	26,900	54,943	33,500	207,056		
		Total Pradhimi	3,600	-8,250			-41,080		-85,550		
		Transaksionet e brendshme	Blerje KESH					10		10	
		Shitje AVEN Energy Trading						-10		-10	
		Blerje KESH									
		Total transaksione	-3,400	-8,250	0	0	-43,680	0	-85,530		
8	NOA ENERGY TRADE	AL-GR Greece - IN	-1,999	-3,398	-5,643	-22,527	-567	-7,740	-41,883		
		AL-RS Kosovo - IN	-9,104	-18,073	-17,600	-27,192	-5,748	-8,240	-88,957		
		AL-ME Monte Negro - IN	-13,659	-661	-5,739	-9,076	-5,008	-6,408	-49,229		
		Total IN	-24,762	-22,132	-29,022	-69,395	-11,323	-25,397	-177,278		
		AL-GR Greece - OUT	8,960	18,025	17,327	6,118	11,973	7,561	69,964		
		AL-RS Kosovo - OUT	16,940	4,107	10,323	33,234	12,242	6,491	83,327		
		AL-ME Monte Negro - OUT	351	0	0	339	443	0	1,133		
		Total OUT	26,251	22,132	27,650	39,691	24,658	14,054	154,424		
		Total Pradhimi	76	146	1,295	13,080	14,095	12,680	42,292		
		Transaksionet e brendshme	Shitje KESM					562	41	603	
		Shitje AVEN Energy Trading							-14,773	-14,773	
		Blerje AVEN Energy Trading			-2,634	-3,961	-15,491	-14,773		-37,085	
		Blerje KESH						-16,740		-16,740	
Shitje KESH	2,009		2,311	3,129	3,827	5,832	17,108				
Shitje FTI							2,808	2,808			
Shitje KURUM				17,456	7,528	5,648	25,624				
Blerje KURUM	-3,594						-1,922	-18,078			
Total transaksione	-1,489	0	972	29,704	-17,748	11,345	21,704				
9	KURUM INTERNATIONAL	AL-GR Greece - IN	0	0	0	0	0	0	0		
		AL-RS Kosovo - IN	0	0	0	0	0	0	0		
		AL-ME Monte Negro - IN	0	0	0	0	0	0	0		
		Total IN	0	0	0	0	0	0	0		
		AL-GR Greece - OUT	0	0	0	0	0	0	0		
		AL-RS Kosovo - OUT	0	0	0	0	0	0	0		
		AL-ME Monte Negro - OUT	0	0	0	0	0	0	0		
		Total OUT	22,226	37,320	34,630	36,000	25,200	0	155,376		
		Total Pradhimi	44,500	41,335	36,652	35,014	47,024	27,191	231,317		
		Transaksion									

		13,199	6,030			480	8,424	28,133	
Transaksionet e brendshme	Shitje GEN-I								
	Shitje Tirana International Development	27,458	3,600			16,740		41,798	
	Shitje EZ-S ENERGY		1,800			672	236	2,808	
	Shitje NDA ENERGY			-2,311	-3,129	-3,927	-5,832	-15,999	
	Shitje NDA ENERGY					16,740		16,740	
	Shitje INFO Telecom					27,480	13,984	41,464	
	Shitje OST	26,555	19,765	19,015	7,125			72,460	
	Shitje AL PEX				68,282	112,260	110,780	288,291	
		567,444	543,415	345,453	314,413	251,823	233,851	2,478,638	

Shënime:

1. Konsumatorët e kualifikuar për secilin subjekt ndryshojnë çdo muaj në varësi të kontratave të nënshkruara nga të dyja palët.
2. Shënja (-) tregon përderisur për energjinë që bënë në rrjet (blerja = import) ndërsa shënja (+) për energjinë që del nga rrjeti (shitje = eksporti).
3. Çdo vlerë e sipërbonusit është e nominuar – me program (që faktikisht nënshkruar).

Burimi OST sh.a

Blerje KESH sipas VKM 757							
Shoqëria	Periudha	Statusi	Sasia	Çmimi	Vlera	TVSH	Vlera me TVSH
			MWh	Euro/MWh	Euro	Euro	Euro
Janar	01-31.01.2023	Blerje	-	-	-	-	-
Shkurt	01-28.02.2023	Blerje	-	-	-	-	-
Mars	01-31.03.2023	Blerje	-	-	-	-	-
Prill	01-30.04.2023	Blerje	-	-	-	-	-
Maj	01-31.05.2023	Blerje	-	-	-	-	-
Qershor	01-30.06.2023	Blerje	-	-	-	-	-
TOTALE			-	-	-	-	-

TOTALI SHITJEVE PER OPTIMIZIM TE PORTFOLIT EKONOMIK TE SHQERISE KESH SH.A.							
Statusi	Sasia	Çmimi	Vlera	TVSH	Vlera me TVSH		
	MWh	Euro/MWh	Euro	Euro	Euro	Euro	Euro
Shitje energji elektrike me procedura bazuar në rregullimin e Tregimit Janar-Qershor 2023	6,000	87	520,200	-	520,200	104,050	624,250
Shitje energji elektrike për kompani KOST Janar-Qershor 2023	-	-	-	-	-	-	-
Shitje energji elektrike për ofrim shërbimesh ndihmëse KOST Janar-Qershor 2023	15,100	188	2,848,800	-	2,848,800	-	2,848,800
Shitje energji elektrike për ofrim shërbimesh ndihmëse OST Janar-Qershor 2023	44,444	169	7,511,116	-	7,511,116	1,502,223	9,013,339
Shitje energji elektrike TEE Vlera për kompani Janar-Qershor 2023	309	148	45,732	-	45,732	-	45,732
TOTALI Janar-Qershor 2023	65,794	166	10,896,473	-	10,896,473	1,606,273	12,502,746

FMIZIM TE PORTFOLIT EKONOMIK TE SHQERISE KESH SH.A.							
Statusi	Sasia	Çmimi	Vlera	TVSH	Vlera me TVSH		
	MWh	Euro/MWh	Euro	Euro	Euro	Euro	Euro
Blerje energji elektrike me procedura bazuar në rregullimin e Tregimit Janar-Qershor 2023	-	-	-	-	-	-	-
Blerje energji elektrike për ofrim shërbimesh ndihmëse KOST Janar-Qershor 2023	-	-	-	-	-	-	-
Blerje energji elektrike për ofrim shërbimesh ndihmëse OST Janar-Qershor 2023	(99,472)	9	(899,340)	-	(899,340)	(179,868)	(1,079,208)
Blerje energji elektrike nga BEC, ASHTA, kompani në kontraktim	-	-	-	-	-	-	-
TOTALI	(99,472)	9	(899,340)	-	(899,340)	(179,868)	(1,079,208)
EFKTI FINANCAR NGA OPTIMIZIM I SHITJEVE DHE BLERJEVE	(33,577,26)	-	156,90	-	10,029,132,83	1,436,928,97	11,466,061,40

Shitje ne kushtet e prarjeve te medha							
Shoqëria	Periudha	Sasia	Çmimi	Vlera	TVSH	Vlera me TVSH	
		MWh	Euro/MWh	Euro	Euro	Euro	Euro
Janar	01-31.01.2023	135,690.00	109.01	14,792,103.12	-	14,792,103.12	
Shkurt	01-28.02.2023	40,686.00	95.79	3,897,117.32	-	3,897,117.32	
Mars	01-31.03.2023	-	-	-	-	-	
Prill	01-30.04.2023	-	-	-	-	-	
Maj	01-31.05.2023	215,137.00	62.80	13,509,555.03	-	13,509,555.03	
Qershor	01-30.06.2023	96,024.00	85.68	8,227,773.12	-	8,227,773.12	
TOTALE	SHITJE	487,537.00	82.92	40,426,548.59	-	40,426,548.59	

E DETAJUAR SIPAS SHQERIVE							
Shoqëria	Sasia (MWh)	EUR/MWh	Vlera	TVSH	Vlera me TVSH		
Janar 2023	ReNRYG Trading Group	827	58.58	48,478.66	7,345.93	55,824.59	
	AYEN Energy Trading	1,022	41.99	42,955.77	8,591.15	51,546.92	
	GSA	57,381	131.18	7,527,516.29	1,505,503.26	9,033,019.55	
	Tirana International Development	27,458	82.26	2,258,698.00	451,739.60	2,710,437.60	
	Danske Commodities Albania	3,600	112.35	404,460.00	80,892.00	485,352.00	
	GENI Tirana	13,199	121.88	1,602,095.50	320,419.10	1,922,514.60	
	EFT AG	29,700	91.54	2,718,804.00	-	2,718,804.00	
	Fuente	432	82.35	35,573.60	-	35,573.60	
	ReNRYG Trading Group SR Beograd	2,270	72.81	165,270.30	-	165,270.30	
	TOTALE	109,01	14,792,103.12	2,374,491.04	17,166,594.16		

Shoqëria	Sasia (MWh)	EUR/MWh	Vlera	TVSH	Vlera me TVSH		
Shkurt 2023	ReNRYG Trading Group	696	35.35	24,603.60	4,920.72	29,524.32	
	EZ-5 Energy shpk	1,800	41.62	74,916.00	14,983.20	89,899.20	
	GSA	2,636	45.90	120,990.96	24,198.19	145,189.15	
	Tirana International Development	3,600	41.00	147,600.00	29,520.00	177,120.00	
	Danske Commodities Albania	8,250	93.15	768,487.50	153,697.50	922,185.00	
	GENI Tirana	6,090	119.54	728,855.30	144,165.06	873,020.36	
	EFT AG	17,590	115.71	2,035,298.00	-	2,035,298.00	
	Fuente	84	52.33	4,395.96	-	4,395.96	
	TOTALE	40,686.00	95.79	3,897,117.32	371,484.67	4,268,601.99	

Shoqëria	Sasia (MWh)	EUR/MWh	Vlera	TVSH	Vlera me TVSH		
Mars 2023							
	TOTALE	-	-	-	-	-	-

Shoqëria	Sasia (MWh)	EUR/MWh	Vlera	TVSH	Vlera me TVSH		
Prill 2023							
	TOTALE	-	-	-	-	-	-

Shoqëria	Sasia (MWh)	EUR/MWh	Vlera	TVSH	Vlera me TVSH		
Maj 2023	Duferco Hellas S.A	2,640	79.40	209,616.00	-	209,616.00	
	NOA Energy Trade sh.p.k	10,740	75.24	808,110.00	161,622.00	969,732.00	
	Future Energy Trading&Exchange Dyna	1,143	63.18	72,219.97	-	72,221.57	
	EFT(AG)	69,966	56.79	3,975,381.42	-	3,975,381.42	
	Info-Telecom sh.p.k	25,600	64.67	1,655,476.00	331,095.20	1,986,571.20	
	Aven Energy Trading sh.a	4,860	68.02	330,565.80	66,113.16	396,678.96	
	GSA Shpk	21,000	61.60	1,293,600.00	258,720.00	1,552,320.00	
	EZ-5 ENERGY sh.p.k	672	70.41	47,315.52	9,463.10	56,778.62	
	ReNRYG Trading Group SR d.o.o Beogra	2856	71.77	204,975.12	-	204,975.12	
	Danske Commodities Albania	43,680	67.13	2,932,423.20	586,484.64	3,518,907.84	
	Tirana International Development	31,500	62.00	1,953,000.00	390,600.00	2,343,600.00	
	Gen-1 Tirana	480	60.15	28,872.00	5,774.40	34,646.40	
	TOTALE	13,509,555.03	1,909,872.50	15,319,427.53			

Shoqëria	Sasia (MWh)	EUR/MWh	Value	TVSH	Vlera me TVSH		
Qershor 2023	Duferco Hellas s.a.	960	90.00	86,400.00	-	86,400.00	
	EFT AG	49,440	74.85	3,700,550.40	-	3,700,550.40	
	EZ-5 Energy sh.p.k.	336	101.57	34,127.52	6,825.50	40,953.02	
	GENI Tirana sh.p.k.	8,424	76.67	645,864.00	129,172.80	775,036.80	
	GSA shpk	26,640	105.44	2,808,799.20	561,759.84	3,370,559.04	
	Info Telecom sh.p.k.	10,224	93.12	952,032.00	190,406.40	1,142,438.40	
	TOTALE	96,024.00	85.68	8,227,773.12	888,164.54	9,115,937.66	

Regjistri Kombetar REMIT Shqiperi

Nr.	Vendi	Kodi i ECRB	Data e paraqitjes	Emri Ligjor i Kompanisë	Forma Ligjore	Adresa e Kompanisë (Zyrtar Qëndrorë)	Qyteti ku ndodhet Kompania	ZIP Code	Kodi EIC i Kompanisë	Kodi BIC i Kompanisë	Kodi LEI i Kompanisë	NIPT i Kompanisë	Website i kompanisë	Webpage ku janë publikuar informacionet e brendshme
1	Shqipëri	ECRB-AL-20220105-001	05.01.2022	GSA	SHPK	Njesia Bashkiake Nr.5 Rr. Ibrahim Rugova 64.	Tirane	1019	22XGSA-N	SGSBALTX		J618230031J	www.gsa.al	www.gsa.al
2	Shqipëri	ECRB-AL-20220225-001	25.02.2022	GEN4-Tirana	SHPK	Ido-Noli Business center, Rr. Ismail Qemali Nr. 27	Tirane	1000	23X-120709JEN0	SGSBALTX		K31413005A	https://www.gen-leu.at/en/	https://www.gen-leu.at/en/
3	Shqipëri	ECRB-AL-20220216-001	16.02.2022	AlbEap Trading & Consulting	SHPK	Rruga "Vaso Pasha" Nr. 20	Tirane	1001	54X-1-10101AESPF	SGSBALTX		M122210081	www.albesgate.al	www.albesgate.al
4	Shqipëri	ECRB-AL-20220601-001	01.06.2022	Korporata Elektroenergetike Shqiptare	SH.A	Rruga "Viktor Eftimiu"	Tirane	1023	23X-130918APC-M	SGSBALTX		J61817005F	www.kesh.al	www.kesh.al
5	Shqipëri	ECRB-AL-20220228-001	28.02.2022	NOA Energy Trade	SHPK	Bulevardi "Dëshmorët e Kombit" Kullat binjake kati 2	Tirane	1001	23X-150630-N-6	SGSBALTX		L42203031A	www.noaenergys.al	
6	Shqipëri	ECRB-AL-20220224-001	25.02.2022	Operatori te Sistemit te Transmetimit	SH.A	Autostreda Tirane-Dures KM 9 Kashtar	Tirane	1051	10XAL-KEESH-J	SGSBALTX		K42101801N	www.ost.al/te-thema/	
7	Shqipëri	ECRB-AL-20220218-001	18.02.2022	INFO-Telcom	SHPK	Rruga "Falk Konica" Nr1 Pallati ius perballi fukultetit ekonomik	Tirane	1001	54X-1-100-INTI	SGSBALTX		K92402002P	www.infotelecom.al	
8	Shqipëri	ECRB-AL-20210712-001	12.07.2021	ReNRGY Trading Group	SHPK	Rruga "Dervish Hima" Nr1 Tirane	Tirane	1010	54X-101RN10261RR	SGSBALTX		L81818026N	www.rnrgy.com	www.rnrgy.com
9	Shqipëri	ECRB-AL-20220218-001	18.02.2022	Tirana International Development	SHPK	Rruan "Sami Frasheri" Nr.5, shkalla F, kati .1 Zyra 2	Tirane	1001	54x-10101-TID-F	PUPPALTR		J82427007R		https://www.linkedin.com/company/ener-trade-shqk/rvcompany
10	Shqipëri	ECRB-AL-20220218-001	18.02.2022	ENER TRADE	SHPK	Rruga e Elbasanit, Objekti Park Gate, Kati 1	Tirane	1001	54X-101ET0911180	USALALTR	8945000X1HJ1ANDKZY22	L82118017S		
11	Shqipëri	ECRB-AL-20230303-001	03.02.2022	Energy Financing Team Tirana	SHPK	Rruga Mirat Toprani, Qendra e Biznesit EURCOOL, Kati 3	Tirane	1001	54X-4FT-TIRANA-V	SGSBALTX		L71801017U	www.efl-group.net	
12	Shqipëri	ECRB-AL-20230207-001	07.02.2022	Energy 24	SHPK	Rruga Ismail Qemali Palli 11 Kati 2 (Pallati Telesport)	Tirane	1001	54-1-101-LEN-24S	SGSBALTX		L91331002S		
13	Shqipëri	ECRB-AL-20230216-001	16.02.2022	Future Energy Trading and Exchange Dynamics	SHPK	Rruga Bilal Golemi, Nderetesa 28 Hrvia 7 Ap 14	Tirane	1019	54-X-1-101FETED-J	SGSBALTX		M21421046C	www.futureenergydynamics.com	
14	Shqipëri	ECRB-AL-20230220-001	20.02.2022	Aven AS Energji	SH.A	Rruga Papa Gjon Palli II, ABA Business Center,	Tirane	1001	23X-150416-A-N	SGSBALTX		L11731504A	http://www.aven.com.tr/	http://www.aven.com.tr/en/aven-as-enerjisi-shq-arritulak
15	Shqipëri	ECRB-AL-20230220-001	20.02.2022	Aven Energy Trading	SH.A	Rruga Papa Gjon Palli II, ABA Business Center, Nr.601	Tirane	1001	23X-140426-AY-W	SGSBALTX		L32130008F	http://www.aven.com.tr/	
16	Shqipëri	ECRB-AL-20230222-001	22.02.2022	EZ-5 ENERGY	SHPK	Rruga Vaso Pasha, Pasuria me Nr. 3/04-1-72, Zona Kadastrale 9270	Tirane	1019	54X-11KE230319U	SGSBALTX		L31325503D	https://www.ez-5energy.com	https://www.ez-5energy.com
17	Shqipëri	ECRB-AL-20230217-001	17.02.2022	Devoli Hydropower	SH.A	ABA Business Center, Zyra Nr. 1206, Rruga "Papa Gjon Palli II"	Tirane	1010	23X-150409-DHP5	SGSBALTX	529900FCSS6HO1BSS98	K82448002C	https://www.devolihydro.at/	https://www.atkraft.com/what-we-offer/market-transparency/
18	Shqipëri	ECRB-AL-20230310-001	10.03.2022	ENSCO Trading (Albania)	SHPK	Njesia Bashkiake nr. 10, Rruga Bogdanave, Vila nr 22, nr 2	Tirane	1019	54X-110ESA1019G	HYVEDEMM59I		L9189025L	https://www.ensco.eu/	
19	Shqipëri	ECRB-AL-20230316-001	16.03.2022	Lengarica & Energy	SHPK	Rruga Jul Variboba, Vila nr. 10, Tirane	Tirane	1022	54X-L-1010H4-LENU	USALALTR		K83026602A	www.enshydro.at	
20	Shqipëri	ECRB-AL-20230317-001	17.03.2022	FURNIZUESIT TREGUT TE LIRE	SH.A	Bulevardi "Gjergj Fishta", Nderetesa Nr. 88, H. 1, Kati i IV, Njesia Administrative Nr. 7.	Tirane	1023	54X-101 0H T0220P	AL3720211066000000001446945		L81530029T	www.osbec.al	www.osbec.al
21	Shqipëri	ECRB-AL-20230317-002	17.03.2022	KURUM INTERNATIONAL	SH.A	Rruga Ibrahim Rugova, pallati nr. 1 4 KT, "Green Park", Ap.nr.39, kati 6, Njesia Administrative Nr.5	Tirane	1001	23X-131115KI-1	SGSBALTX (RAIFFEISEN BANK)	K02727230T	K02727230T	www.kurum.al	www.kurum.al
22	Shqipëri	ECRB-AL-20230317-003	17.03.2022	Danske Commodities Albania	SHPK	Rruga Ibrahim Rugova, Sky Tower, Godina nr. 5, Kati 9, Zyra 91	Tirane	1000	23X-121120DCALG	SGSBALTX		L21702005R	www.danskecommodities.com	
23	Shqipëri	ECRB-AL-20230320-001	20.03.2022	Dragobia Energy	SHPK	Rruga "Papa Gjon Palli II", Ndetetesa Nr. 12, ABA Business Center	Tirane	1010	54X-1-111DRG-0I-W	SGSBALTX / PUPPALTR		K92025004F	www.dragobienery.com	
24	Shqipëri	ECRB-AL-20230320-002	20.03.2022	Nature Energy	SHPK	Rruga Pristi Nr.48, Vaqar	Tirane	1041	54X-101-EN-11YRL	USALALTR		L22220033M	www.natureenergy.com	
25	Shqipëri	ECRB-AL-20230317-003	20.03.2022	Futuruesi i Sherbimit Universal	SH.A	Bulevardi "Gjergj Fishta", Nderetesa Nr. 88, H. 1, Kati i 2, Njesia Administrative Nr. 7.	Tirane	1023	54X-1010HSH022Q	SGSBALTX		L81530016L	www.futuruesi.al	
26	Shqipëri	ECRB-AL-20230323-001	23.03.2023	LATTHIZA INVEST	SH.A	Lajthize, Njesia Administrative Qoft-mali,	Fushë -Arrez	4402	54X-L-101 ILTH-IS	PUPPALTR.XXX		J98009202P	www.lathiza.al	
27	Shqipëri	ECRB-AL-20230324-001	24.03.2023	Heci-Bismica 1,2	SHPK	Bivdi- B.Curri, E.T.C. kati IV, zyra 5/2.	Tirane	1017	54X-1-10011HB12W	AL84202110750000001002955860		K8240301IS	www.hecitevoliti.com	www.hecitevoliti.com
28	Shqipëri	ECRB-AL-20230324-002	24.03.2023	Heci Tervoliti	SHPK	Komuna Pishaj Gramsh	Gramsh	3301	54X-1-21010HTEI	AL1620211219000000013351925		K73621202N	www.aveno.com	www.aveno.com
29	Shqipëri	ECRB-AL-20230331-001	31.03.2023	Aveno Albanian	SH.A	Rruga e Rinasit, Tirana Business Park, Nd.07, Fushë Preze	Tirane	23X-150330-AA-K	SGSBALTX	529900ZABTUMR5SS885		K31628010V	www.aveno.com	www.aveno.com
30	Shqipëri	ECRB-AL-20230331-002	31.03.2023	ADA SOLAR SE	SHPK	Rruga "Dervish Hima", Ada Tower	Tirane	1001	54X-1-01.00ADS-6	SGSBALTX		L81906036J	www.ossh.al	www.ossh.al
31	Shqipëri	ECRB-AL-20230406-001	06.04.2023	Operatori i Sistemit te Shperndarjes	SH.A	Bulevardi "Gjergj Fishta", Nderetesa 88, Kati V,Hyrya 1	Tirane	1023	54X-1010FT0220P	AL15212110160000000001386653		L81530018E	www.ossh.al	www.ossh.al
32	Shqipëri	ECRB-AL-20230414-001	14.04.2023	G.S.K	SHPK	Rruga e Barrikadave, Pasuria nr.5/735-1-2,Zona Kadastrale 8360	Tirane	1010	54X-10101-G15K-N	SGSBALTX		M01707503J		