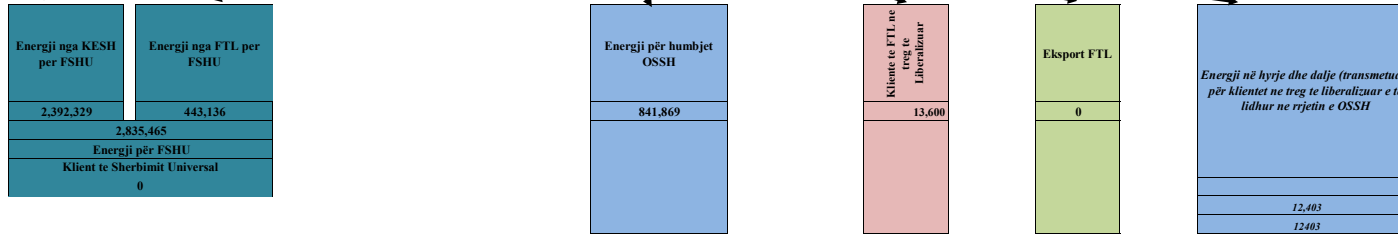


BILANCI ENERGJITIK 6-MUJORI 2022 (MWh)

| Prodhimi neto publik | | Prodhuar nga PPE në rrjetin e OSSH | | | Prodhuar nga PPE në rrjetin e OST | | Prodhuar te pavarur | | | | | Prodhim neto vendas | |
|-------------------------------------|-----------|------------------------------------|---------------------------------------|-------------|--------------------------------------|------------|---------------------|--------------|------------|--------------|-----------|---------------------|-----------|
| Prodhimi Neto KESH sha | | Neto (Selit) | HC.Priv/Kon ne Rrjetin e OSSH për FTL | FOTOVOLTAIK | HC.Priv/Kon ne Rrjetin e OST për FTL | Neto Ashta | Neto Banja | Neto Mogleta | Neto KURUM | H/C Peshqesh | H/C Fanga | | Hec Qamii |
| 1,695,792 | | 13,962 | 522,889 | 22,618 | 578,240 | 108,148 | 108,812 | 227,135 | 212,704 | 54,185 | 117,533 | 856 | 3,662,874 |
| Blerje KESH ne treg te liberalizuar | 752,306 | | | | | | | | | | | | |
| Prodhim+Blerje | 2,448,098 | | | | | | | | | | | | |
| Shkembime (hyrje) KEK | 118,526 | | | | | | | | | | | | |
| Shkembime (dalje) KEK | - 64,734 | | | | | | | | | | | | |
| Energji sherbime ndihmese+disbal | 1,977 | | | | | | | | | | | | |
| Energji per FSHU nga KESH sha | 2,392,329 | | | | | | | | | | | | |

| Energji e siguruar nga FTL | | | | | | |
|----------------------------|--|--------------------|---|-------------------|--|--------------------|
| Blerje Neto (Selit) | Blerje HC.Priv/Kon ne Rrjetin e OSSH për FTL | Blerje FOTOVOLTAIK | Blerje HC.Priv/Kon ne Rrjetin e OST për FTL | Blerje Neto Ashta | Blerje ne Treg të Liberalizuar nga FTL | nga ost Tec Ballsh |
| 13,962 | 522,889 | 22,618 | 578,240 | 108,148 | 64,938 | 213 |
| 1,311,008 | | | | | | |

| |
|-------------------------------------|
| Ballanca në interkoneksion (marrje) |
| 590,781 |



| | |
|-------------|-----------|
| Familjare | 1,648,750 |
| Privat | 545,314 |
| Buxhetore | 92,492 |
| Jobuxhetore | 21,761 |
| | 2,308,317 |

| | |
|-------------------------------|-----------|
| KONSUMI TOTAL 2022 (6-mujori) | 4,253,652 |
|-------------------------------|-----------|

| |
|-----------|
| 4,253,655 |
|-----------|

| TABELA ME TE DHENA PERIODIKE (MUJORE) TE OSHEE Group 2022 (6-Mujori Pare) | | | Janar | Shkurt | Mars | Prill | Maj | Qershor | Prog. 6-muj |
|---|---|-------------------------|------------------|------------------|------------------|------------------|------------------|------------------|-------------------|
| A | Energji Totale e Hyrë në OSHEE Sh.a (MWh) | A=A.1+A.3-A1.7 | 774,084 | 656,456 | 698,991 | 556,263 | 504,527 | 525,509 | 3,715,527 |
| A.1 | Energji e transmetuar nepermjet OST per llogari te OSHEE Sh.a | A.1=Sum(A.1.1..A1.6) | 686,069 | 577,271 | 618,613 | 393,520 | 398,540 | 482,045 | 3,156,058 |
| A.1.1 | Nga KESH -Gen nepermjet OST | | 530,368 | 477,682 | 525,853 | 189,876 | 251,703 | 416,847 | 2,392,329 |
| A.1.2 | Nga OST si import i OSHEE Sh.a | | 43,344 | 4,032 | 4,458 | 4,320 | 4,464 | 4,320 | 64,938 |
| A.1.3 | Energji e transmetuar per klientet 35kV (te dal ne treg te parregulluar furnizues te tjere) | | 2,478 | 1,682 | 2,074 | 1,951 | 2,312 | 1,905 | 12,403 |
| A.1.4 | Nga OST per llogari te klienteve te OSHEE Sh.a prodhuarnga HEC-et ne rrjetin e transmetimit | | 109,878 | 93,875 | 86,228 | 197,373 | 140,061 | 58,973 | 686,388 |
| A.1.5 | Nga TEC VLORA nepermjet OST | | n/a | n/a | n/a | n/a | n/a | n/a | n/a |
| A.1.6 | Nga Bistrica L2 nepermjet OST | | n/a | n/a | n/a | n/a | n/a | n/a | n/a |
| A.1.7 | Export OSHEE Group Sh.a | | - | - | - | - | - | - | - |
| A.2 | Energji elektrike e injektuar ne OST nga Hec-et Lokale | A.2 | 29,707 | 29,382 | 26,664 | 96,219 | 52,872 | 10,146 | 244,991 |
| A.3 | Energji e transmetuar direkt ne rrjetin e OSHEE Sh.a | A.3 = Sum(A.3.1..A.3.3) | 88,016 | 79,185 | 80,378 | 162,743 | 105,685 | 43,463 | 559,469 |
| A.3.1 | HEC Ulez,Lanabregas | | 2,465 | 2,172 | 2,273 | 2,451 | 2,471 | 2,129 | 13,962 |
| A.3.2 | Impjantet Private/me Koncesion | | 83,069 | 74,132 | 74,479 | 156,218 | 98,408 | 36,584 | 522,890 |
| A.3.3 | Burimet e Rinovueshme Fotovoltaik (BRE) | | 2,482 | 2,881 | 3,626 | 4,073 | 4,805 | 4,751 | 22,618 |
| B | Energji Totale ne Rrjetin e Shperndarjes (MWh) | B=A+ A.1.3+A.2 | 803,791 | 685,838 | 725,656 | 652,482 | 557,097 | 535,655 | 3,960,518 |
| C | Humbjet Totale ne Rrjetin e Shperndarjes (MWh) | C=C.1+C.2+C.3 | 228,398 | 134,806 | 171,818 | 118,995 | 95,173 | 92,679 | 841,869 |
| C.1 | Humbje Teknike njesite e TL (MWh) | | 11,779 | 7,792 | 8,153 | 9,475 | 7,512 | 7,563 | 52,275 |
| C.2 | Humbje Teknike ne Zona (MWh) | | 137,678 | 82,990 | 103,492 | 70,765 | 57,224 | 56,080 | 508,228 |
| C.3 | Humbje JoTeknike ne Zona (MWh) | | 78,942 | 44,024 | 60,173 | 38,755 | 30,437 | 29,037 | 281,367 |
| C.1 | Humbjet Totale ne OSHEE Sh.a (%) | C.1= C/B | 28.42% | 19.66% | 23.68% | 18.24% | 17.08% | 17.30% | 21.26% |
| C.1.1 | Humbje Teknike njesite e TL (%) | | 1.47% | 1.14% | 1.12% | 1.45% | 1.35% | 1.41% | 1.32% |
| C.2.1 | Humbje Teknike ne Zona (%) | | 17.39% | 12.25% | 14.43% | 11.01% | 10.42% | 10.63% | 13.01% |
| C.3.1 | Humbje JoTeknike ne Zona (%) | | 9.82% | 6.42% | 8.29% | 5.94% | 5.46% | 5.42% | 7.10% |
| D | Energjia e perdorur në Rrjetin e Shperndarjes | D=Sum(D.1..D.7) | 571,232 | 545,260 | 549,709 | 530,370 | 459,417 | 439,141 | 3,095,128 |
| D.1 | Shitur Klienteve FMF (MWh) | D.1=D.1.1+D.1.2 | 84,224 | 87,386 | 92,818 | 81,530 | 88,358 | 95,101 | 529,417 |
| D.1.1 | Shitur Klienteve FMF Privat (MWh) | | 257 | 209 | 1,227 | 1,385 | 60 | 64 | 3,201 |
| D.1.2 | Shitur Klienteve FMF JoBuxhetore(MWh) | | 1,580 | 1,411 | 1,552 | 23 | 1,497 | 1,560 | 7,623 |
| D.1.3 | Shitur Klienteve FMF 20/10/6 (MWh) | | 82,387 | 85,766 | 90,039 | 80,122 | 86,801 | 93,477 | 518,593 |
| D.2 | Shitur Klienteve Private (MWh) | D.2= D.2.1+D.2.2+D.2.3 | 93,710 | 91,569 | 94,256 | 81,273 | 84,674 | 99,833 | 545,314 |
| D.2.1 | Shitur nga rrjeti i Transmetimit per llogari te OSHEE Sh.a | | - | - | - | - | - | - | - |
| D.2.2 | Shitur per nevoja te veta te OSHEE Sh.a | | 689 | 633 | 660 | 546 | 477 | 443 | 3,448 |
| D.2.3 | Shitur Klienteve Private (pa ate per nevoja te veta dhe Ne TL) | | 93,022 | 90,936 | 93,596 | 80,727 | 84,196 | 99,390 | 541,867 |
| D.3 | Shitur Klienteve JoBuxhetore (MWh) | | 3,726 | 4,106 | 4,009 | 3,510 | 3,144 | 3,266 | 21,761 |
| D.4 | Shitur Klienteve Buxhetore (MWh) | | 17,878 | 18,635 | 18,291 | 15,090 | 11,922 | 10,675 | 92,492 |
| D.5 | Shitur Klienteve Familjare (MWh) | D.5=D.5.1+D.5.2 | 339,508 | 312,500 | 311,596 | 250,797 | 216,134 | 218,214 | 1,648,750 |
| D.5.1 | Shitur Klienteve Familjare (MWh) | | 332,522 | 305,540 | 304,218 | 243,411 | 208,691 | 210,705 | 1,605,087 |
| D.5.2 | Shitur Klienteve Familjare per Ambientet e Perbashketa | | 6,985 | 6,960 | 7,378 | 7,386 | 7,444 | 7,509 | 43,663 |
| D.6 | Energji elektrike e injektuar ne OST nga Hec-et Lokale | D.6=A.2 | 29,707 | 29,382 | 26,664 | 96,219 | 52,872 | 10,146 | 244,991 |
| D.7 | Energji elektrike e perdorur nga klientet ne treg te parregulluar | D.7 | 2,478 | 1,682 | 2,074 | 1,951 | 2,312 | 1,905 | 12,403 |
| E | Faturuar muaji Parardhes (000/leke) | | 7,572,744 | 7,779,896 | 7,515,728 | 7,733,441 | 6,432,950 | 6,188,303 | 43,223,063 |
| F | Arketimet e muajit aktual (000 leke) | G=F.1+F.2+F.3+F.4 | 6,859,193 | 6,664,376 | 7,719,627 | 6,995,838 | 6,306,324 | 6,055,583 | 40,600,940 |
| F.1 | Arketuar per faturat korrente te vitit aktual | | 4,772,679 | 4,569,541 | 4,836,203 | 4,689,433 | 4,033,175 | 3,762,429 | 26,663,460 |
| F.3 | Arketuar per faturat e tjera te vitit aktual | | 20,757 | 13,611 | 1,871,879 | 1,853,400 | 1,948,442 | 1,847,920 | 7,556,009 |
| F.4 | Arketuar per faturat e tjera te viteve te kaluara | | 2,065,757 | 2,081,224 | 1,011,546 | 453,004 | 324,707 | 445,234 | 6,381,471 |
| F.1 | Arketimet e muajit aktual (%) | F.1=F/E | 90.6% | 85.7% | 102.7% | 90.5% | 98.0% | 97.9% | 93.9% |
| F.1.1 | Arketuar per faturat korrente te vitit aktual (%) | F.1.1=F.1/E | 63.0% | 58.7% | 64.3% | 60.6% | 62.7% | 60.8% | 61.7% |
| F.1.3 | Arketuar per faturat e tjera te vitit aktual (%) | F.1.3=F.3/E | 0.3% | 0.2% | 24.9% | 24.0% | 30.3% | 29.9% | 17.5% |
| F.1.4 | Arketuar per faturat e tjera te viteve te kaluara (%) | F.1.4=F.4/E | 27.3% | 26.8% | 13.5% | 5.9% | 5.0% | 7.2% | 14.8% |
| G | Faturuar muaji Raportues (000/leke) | | 7,779,896 | 7,515,728 | 7,733,441 | 6,432,950 | 6,188,303 | 6,553,744 | 42,204,064 |
| 1 | Nr. Konsumatoreve gjithsej (Nr.) | | 1,280,126 | 1,283,027 | 1,284,215 | 1,285,355 | 1,286,788 | 1,289,274 | 1,289,274 |
| 2 | Fatura te emetuara me lexim konsumi (Nr.) | | 967,388 | 985,832 | 990,066 | 992,115 | 1,019,767 | 1,020,896 | 5,976,064 |
| 3 | Sasia e energjise se faturuar me lexim konsumi (MWh) | | - | - | - | - | - | - | - |
| 4 | Fatura te emetuara me lexim "0" (Nr.) | | 316,389 | 291,426 | 288,450 | 298,695 | 274,240 | 276,332 | 1,745,532 |
| 5 | Nr.Faturave te emetuara pa lexim (energji e pa matur) (Nr.) | | - | - | - | - | - | - | - |
| 6 | Sasia e energjise se faturuar si energji e pamatur (MWh) | | - | - | - | - | - | - | - |
| 7 | Nr.Faturave te emetuara pa lexim (dem ekonomik) (Nr.) | | 359 | 138 | 144 | 93 | 66 | 136 | 936 |
| 8 | Sasia e faturuar si dem ekonomik (MWh) | | 2,130 | 3,676 | 1,769 | 1,051 | 378 | 914 | 9,918 |
| 9 | Nr.Faturave per te cilat eshte arketuar kamat vonese (Nr.) | | 345,557 | 333,648 | 411,043 | 380,846 | 354,068 | 398,448 | 2,223,610 |
| 10 | Vlera e Kamat vonesave te arketuara (000/leke) | | 67,504 | 58,047 | 77,908 | 85,768 | 69,338 | 88,303 | 446,869 |

| BILANCI ENERJITIK I FTL sha, FSHU SHA DHE OSSH sha PER 6-MUJORIN 2022 (MWh) | | | |
|--|---|------------------------------|------------------|
| 1 | ENERGJI TOTALE E HYRE NE RRJETIN E OSSH-se | 2+3+7.6 | 3,715,527 |
| 2 | Energji e shitur nga KESH sha per FSHU sha | | 2,392,329 |
| 3 | ENERGJI NE HYRJE E BLERE NGA FTL (OSHEE sha) | 3.1+3.2+3.3+3.4 | 1,311,008 |
| 3.1 | Blere nga Prodhimi i PPE në rrjetin e OSSH | | 559,469 |
| 3.2 | Blere nga Prodhimi i PPE në rrjetin e OST | | 686,388 |
| 3.3 | Blere ne Treg të Liberalizuar nga FTL sha | | 64,938 |
| 3.4 | Transmetim nga Tec Ballshi | | 213 |
| 4 | ENERGJI NE DALJE E SHITUR NGA FTL (OSHEE sha) | 4.1+4.2+4.3+4.4+4.5 | 1,311,008 |
| 4.1 | Energji nga FTL per FSHU | | 443,136 |
| 4.2 | Energji nga FTL për humbjet OSSH | | 841,869 |
| 4.4 | Energji e shitur nga FTL ne treg te liberalizuar | | 13,600 |
| 4.5 | Eksport i FTL | | 0 |
| | Energji vetem per tu transmetuar tek klientet ne treg te liberalizuar (ne rrjetin e OSSH) | | 12,403 |
| 5 | ENERGJI NE HYRJE PER FSHU (OSHEE sha) | 2+4.1 | 2,835,465 |
| 5.1 | Energji Faktike nga KESH sha per FSHU sha | 2 | 2,392,329 |
| 5.2 | Energji nga FTL per FSHU | 4.1 | 443,136 |
| 6 | ENERGJI NE DALJE PER FSHU (OSHEE sha) | 6.1 deri 6.14 | 2,835,462 |
| 6.1 | Shitur Klienteve te Sherbimit Universal | | 2,308,317 |
| 6.11 | Shitur klienteve Familiare | | 1,648,750 |
| 6.12 | Shitur klienteve Private | | 545,314 |
| 6.13 | Shitur klienteve Buxhetore | | 92,492 |
| 6.14 | Shitur klienteve JoBuxhetore | | 21,761 |
| 6.2 | Shitur Klienteve të mundësisë së Fundit | | 529,417 |
| 6.21 | Shitur Klienteve FMF Privat (MWh) | | |
| 6.22 | Shitur Klienteve FMF JoBuxhetore(MWh) | | |
| | Shitur si dem Ekonomik | | 9,918 |
| 6.23 | Shitur energjia e marre nga Tec Ballshi | | 213 |
| | Energji vetem per tu transmetuar tek klientet ne treg te liberalizuar (ne rrjetin e OSSH) | | 12,403 |
| 7 | ENERGJI QE KALON NE RRJETIN E OSSH-se | 4.2+2+4.1+7.4+7.5+7.6 | 3,960,518 |
| 7.1 | Energji nga FTL për humbjet OSSH | | 841,869 |
| 7.2 | Energji Faktike nga KESH sha per FSHU sha | | 2,392,329 |
| 7.3 | Energji nga FTL per FSHU | | 443,136 |
| 7.4 | Energjia e ngitur ne rrjetin e transmetimit nga centralet e lidhura ne rrjetin e OSSH | | 244,991 |
| 7.5 | Energji e furnizuar nga FTL për Kliente ne treg të liberalizuar (ne rrjetin e OSSH) | | 12,403 |
| 7.6 | Energji vetem per tu transmetuar tek klientet ne treg te liberalizuar (ne rrjetin e OSSH) | | 12,403 |
| 7.7 | Klienteve të FTL ne treg te liberalizuar | | 13,600 |
| | Shitur energjia e marre nga Tec Ballshi | | 213 |
| 8 | Humbje totale ne rrjetin e OSSH-se (%) | 7.1 x 100 / 7 | 21.26 |

Bilanci i Energjisë Elektrike për vitin 2022 OST sha

| OST sha | Njësia e Matjes | Janar | Shkurt | Mars | Prill | Maj | Qershor | 6-Muj 2022 [MWh] |
|---|-----------------------------|----------------|----------------|----------------|----------------|----------------|----------------|---------------------|
| | MWh | | | | | | | |
| Prodhimi nga KESH GEN në Rrjetin e Transmetimit | 1 | 414,833 | 282,804 | 367,149 | 185,113 | 207,016 | 238,877 | 1,695,792 |
| Prodhimi nga HEC/HPP e vogla në Rrjetin e Transmetimit | 2 | 29,707 | 29,382 | 26,664 | 96,219 | 52,872 | 10,146 | 244,991 |
| Prodhimi nga PPE/IPP e mëdha në Rrjetin e Transmetimit | 3 | 85,752 | 75,786 | 64,481 | 179,932 | 126,291 | 46,853 | 579,096 |
| Prodhimi nga HEC Peshqesh | 4 | 11,761 | 10,920 | 6,352 | 16,041 | 6,604 | 2,506 | 54,185 |
| Prodhimi nga HEC Banja | 5 | 25,378 | 18,054 | 19,225 | 19,924 | 19,929 | 6,301 | 108,812 |
| Prodhimi nga HEC FANG | 6 | 35,654 | 21,085 | 16,488 | 29,410 | 10,562 | 4,335 | 117,533 |
| Prodhimi nga HEC Moglicë | 7 | 60,844 | 43,509 | 38,469 | 37,505 | 38,945 | 7,862 | 227,135 |
| Prodhimi nga nga HEC Ashta | 8 | 24,126 | 18,089 | 21,780 | 18,191 | 13,841 | 12,120 | 108,148 |
| Prodhimi nga KURUM (Ulez-Shkopet&Bistrica1,2) | 9 | 48,716 | 23,309 | 33,750 | 46,642 | 42,055 | 18,233 | 212,704 |
| Eksperti (-) nga Linjat e Interkonjeksionit | D | 152,329 | 78,525 | 142,301 | 154,761 | 134,323 | 126,018 | 788,257 |
| Importi (+) nga Linjat e Interkonjeksionit | R | 192,108 | 239,364 | 283,751 | 126,652 | 171,655 | 365,508 | 1,379,039 |
| Balanca (Total Interkonjeksioni) | 11=(R-D) | -39,779 | -160,839 | -141,450 | 28,109 | -37,332 | -239,491 | 590,781 |
| Energjia Totale në Marrje | 12=(1+2+3+4+5+6+7+8+9+10+R) | 928,879 | 762,302 | 878,110 | 755,630 | 689,772 | 712,742 | 4,727,434 |
| Humbjet në Rrjetin e Transmetimit (përfshirë Nevojat Vetjake) | 13 | 17,792 | 14,697 | 15,237 | 24,525 | 17,693 | 13,455 | 103,399.89 |
| Humbjet në Rrjetin e Transmetimit % | 14=13/12 | 1.92 | 1.93 | 1.74 | 3.25 | 2.57 | 1.89 | 2.19 |
| Energjia Totale në Dhënie | 15=(12-13) | 911,087 | 747,605 | 862,872 | 731,105 | 672,079 | 699,286 | 4,624,034 |
| <i>Transmetuar në Linjat e Interkonjeksionit</i> | 16=D | 152,329 | 78,525 | 142,301 | 154,761 | 134,323 | 126,018 | 788,257 |
| <i>Transmetuar tek Klientët e Kualifikuar</i> | | 42,911 | 62,366 | 75,227 | 86,590 | 86,344 | 81,077 | 434,515 |
| <i>EL220-L220KURUM/337</i> | | 1,769 | 21,948 | 32,655 | 32,693 | 22,752 | 23,686 | 135,502 |
| <i>F.Arrez-T3/653</i> | | - | - | - | - | - | - | - |
| <i>Titan T1,T2</i> | | 7,960 | 9,448 | 10,809 | 10,544 | 10,498 | 9,036 | 58,293 |
| <i>FUSHE KRUJE 220kV-T2/058</i> | | - | - | - | 4,264 | 7,057 | 3,983 | 15,304 |
| <i>N/ST 220/6,3Colacent-T1/336</i> | | 426 | 1,353 | 782 | 1,481 | 888 | 1,330 | 6,260 |
| <i>N/ST i GSA EL 110kV-T1/694</i> | | - | - | - | - | - | - | - |
| <i>N/ST i GSA EL 110kV-T2/960</i> | | 17,703 | 15,919 | 16,128 | 16,518 | 17,232 | 16,340 | 99,839 |
| <i>N/ST I CWI Albania T1/148</i> | | - | - | - | 0.30 | 510 | 511 | 1,021 |
| <i>N/ST i AES EL 110kV-T1/690</i> | | 7,188 | 5,203 | 2,147 | 7,076 | 7,232 | 7,011 | 35,859 |
| <i>N/ST I AES EL 110kV-T2/692</i> | | 233 | 1,413 | 5,072 | 7,054 | 7,473 | 7,288 | 28,532 |
| <i>HEC Moglice T1,T2,T3</i> | | 3 | 2 | 3 | 1 | 1.16 | 4 | 14 |
| <i>HEC Peshqesh-T1/633</i> | | 9 | 7 | 29 | 0.57 | 17 | 30 | 93 |
| <i>Lajthiza T1/742</i> | | 328 | 472 | 184 | 13 | 162 | 388 | 1,546 |
| <i>HEC Ashta1-T1,HEC Ashta2-T1,</i> | | 0.09 | - | - | 0.01 | - | 1 | 1 |
| <i>HEC Banje T1,T2</i> | | 14 | 17 | 19 | 16 | 17 | 23 | 106 |
| <i>HEC Fang-T1,T2,</i> | | 32 | 24 | 39 | 16 | 25 | 25 | 161 |
| <i>Gjenerim KURUM</i> | | 0.13 | 16 | 10 | 3.07 | 0.17 | 17 | 47 |
| <i>TEC Ballsh-T1/598</i> | | 71 | 61 | 66 | 15 | - | - | 213 |
| <i>FERRO KROM-F1,F2,F3,F4</i> | | 7,247 | 6,545 | 7,349 | 6,912 | 12,480 | 11,405 | 51,937 |
| <i>Transmetuar në rrjetin e Shpërndarjes</i> | | 715,776 | 606,653 | 645,278 | 489,739 | 451,412 | 492,191 | 3,401,049 |
| <i>Transmetuar në rrjetin e Shpërndarjes 110 kV</i> | | 617,507 | 523,533 | 559,503 | 427,177 | 396,680 | 430,190 | 2,954,589 |
| <i>Transmetuar në rrjetin e Shpërndarjes 35 kV</i> | | 51,767 | 45,806 | 47,343 | 32,236 | 29,439 | 36,903 | 243,495 |
| <i>Transmetuar në rrjetin e Shpërndarjes 6, 10, 20 kV</i> | | 46,502 | 37,314 | 38,432 | 30,327 | 25,293 | 25,098 | 202,966 |

TE DHËNA MBI TRANSMETIMIN E ENERGJISË ELEKTRIKE NGA OPERATORI I SISTEMIT TE TRANSMETIMIT NË SHQIPËRI
e VITIT 2022 (MWh)

PËR 6-Mujorin

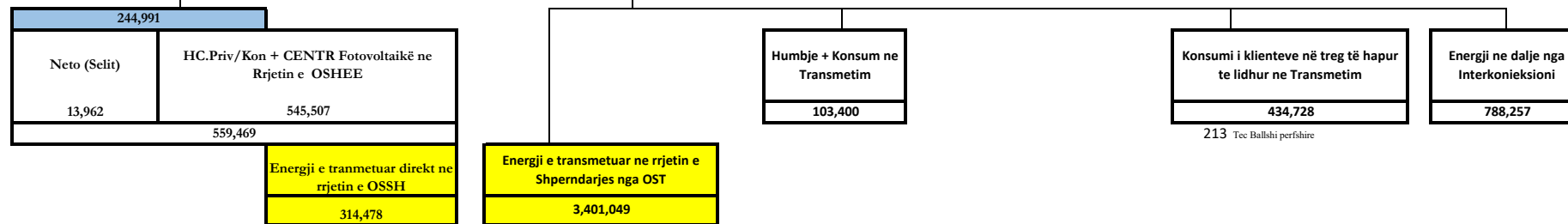
| | Janar | Shkurt | Mars | Prill | Maj | Qershor | 2022 | | |
|--|--|----------------|----------------|----------------|----------------|----------------|------------------|------------------|------------------|
| HYRJE | Dhene nga H/C e KESH ne rrjetin e Transmetimit | 414,833 | 282,804 | 367,149 | 185,113 | 207,016 | 238,877 | 1,695,792 | 4,727,434 |
| | Dhene nga H/C e me perparesi ne rrjetin e Transmetimit | 85,752 | 75,786 | 64,481 | 179,932 | 126,291 | 46,853 | 579,096 | |
| | Energji nga Hec-et Lokale levruar ne Rrjetin e Transmetimit (me ngritje) | 29,707 | 29,382 | 26,664 | 96,219 | 52,872 | 10,146 | 244,991 | |
| | Gjenerim KURUM (prodhues i pavarur) | 48,716 | 23,309 | 33,750 | 46,642 | 42,055 | 18,233 | 212,704 | |
| | HEC ASHTA (prodhues i pavarur Kontr.me OSHEE) | 24,126 | 18,089 | 21,780 | 18,191 | 13,841 | 12,120 | 108,148 | |
| | HEC BANJE (prodhues i pavarur) | 25,378 | 18,054 | 19,225 | 19,924 | 19,929 | 6,301 | 108,812 | |
| | HEC MOGLICE (prodhues i pavarur) | 60,844 | 43,509 | 38,469 | 37,505 | 38,945 | 7,862 | 227,135 | |
| | HEC PESHQESH-T1/637 (prodhues i pavarur) | 11,761 | 10,920 | 6,352 | 16,041 | 6,604 | 2,506 | 54,185 | |
| | HEC FANGU (prodhues i pavarur) | 35,654 | 21,085 | 16,488 | 29,410 | 10,562 | 4,335 | 117,533 | |
| Importi(Hyre) nga Linjat e Interkonjeksionit | 192,108 | 239,364 | 283,751 | 126,652 | 171,655 | 365,508 | 1,379,039 | | |
| DALJE | Humbjet ne Transmetim | 17,792 | 14,697 | 15,237 | 24,525 | 17,693 | 13,455 | 103,400 | 4,727,434 |
| | Transmetuar ne Rrjetin e Shperndarjes | 715,776 | 606,653 | 645,278 | 489,739 | 451,412 | 492,191 | 3,401,049 | |
| | Klientene treg te hapur (TL) (+Tec Ballsh) | 42,982 | 62,427 | 75,293 | 86,605 | 86,344 | 81,077 | 434,728 | |
| | Eksporti (Dale) nga Linjat e Interkonjeksionit | 152,329 | 78,525 | 142,301 | 154,761 | 134,323 | 126,018 | 788,257 | |
| Humbjet ne Transmetim | 17,792 | 14,697 | 15,237 | 24,525 | 17,693 | 13,455 | 103,400 | | |
| Humbjet ne Transmetim ne % | 1.92 | 1.93 | 1.74 | 3.25 | 2.57 | 1.89 | 2.19 | | |

PARAQITJA SKEMATIKE E FLUKSEVE TE ENERJISE NE SISTEMIN ELEKTRO-ENERGJITIK SHQIPETAR 6-mujori VITI 2022 (MWh)

| | | | | | | | | | |
|---|--|--|---|---------|---------|---------|----------|------|---------------------------------------|
| Energji e lëvruar nga H/C-et e KESH sha | Energji e levruar nga prodhuesit me përparësi lidhur ne TL (kontrate me OSHEE) | Energji e levruar nga H/C ASHTA lidhur ne TL (kontrate me OSHEE) | Energji e levruar nga H/C et Priv/konc lidhur ne TL (Prodhues ne treg te hapur) | | | | | | Energji ne hyrje nga Interkonieksioni |
| 1,695,792 | 578,240 | 108,148 | Kurum | Banje | Moglice | Fangu | Peshqesh | Qami | 1,379,039 |
| | | | 212,704 | 108,811 | 227,135 | 117,533 | 54,185 | 856 | |

4,727,434

— ENERGJI HYRESE NE RRJETIN E TRANSMETIMIT



3,715,527

ENERGJI HYRESE NE RRJETIN E SHPERNDARJES

ENERGJI E KONSUMUAR NE RRJETIN E SHPERNDARJES

| | | |
|--|---------|---------|
| Konsumuar Klientet lidhur në OST(+Ballsh) | 434,728 | 538,128 |
| Konsumuar nga OST (humbje +nevoja vetiake) | 103,400 | |
| | 538,128 | |

ENERGJI E KONSUMUAR NE RRJETIN E TRANSMETIMIT

4,253,655

ENERGJI E KONSUMUAR NE SHQIPERI

LEGJENDA

| | |
|------|---------------------------------|
| FSHU | FURNIZUES I SHËRBIMIT UNIVERSAL |
| FMF | FURNIZUES I MUNDËSISË SË FUNDIT |

Burimi OST ,OSHEE sha

| PRODHIMI NETO NE SHQIPERI | Janar | Shkurt | Mars | Prill | Maj | Qershor | 6M 2022 |
|--|----------------|----------------|----------------|----------------|----------------|----------------|------------------|
| Prodhimi Neto KESH sha. | 414,833 | 282,804 | 367,149 | 185,113 | 207,016 | 238,877 | 1,695,792 |
| Hec-et Private dhe Konc. (Rrjeti Shperndarjes) | 83,068 | 74,132 | 74,479 | 156,218 | 98,408 | 36,584 | 522,889 |
| Hec-et Private dhe Konc. (Rrjeti Transmetimit) | 85,752 | 75,786 | 64,448 | 179,183 | 126,219 | 46,853 | 578,240 |
| HEC Ashta | 24,126 | 18,089 | 21,780 | 18,191 | 13,841 | 12,120 | 108,148 |
| Prodhimi Neto Hec Lanabregas | 2,465 | 2,172 | 2,273 | 2,451 | 2,471 | 2,129 | 13,962 |
| Prodhimi Neto (Hec Ulez,Shkopet,Bistrica 1,2) | 48,716 | 23,309 | 33,750 | 46,642 | 42,055 | 18,233 | 212,704 |
| Prodhimi Hec Peshqesh | 11,761 | 10,920 | 6,352 | 16,041 | 6,604 | 2,506 | 54,185 |
| Prodhimi Hec Fangu | 35,654 | 21,085 | 16,488 | 29,410 | 10,562 | 4,335 | 117,533 |
| Prodhimi Hec Banja | 25,378 | 18,054 | 19,225 | 19,924 | 19,929 | 6,301 | 108,812 |
| Prodhimi Hec Moglica | 60,844 | 43,509 | 38,469 | 37,505 | 38,945 | 7,862 | 227,135 |
| Prodhimi Hec Qami-1 | 0 | 0 | 34 | 750 | 72 | 0 | 856 |
| Prodhimi i Centraleve Fotovoltaike | 2,481.95 | 2,881.11 | 3,625.90 | 4,072.90 | 4,804.93 | 4,750.76 | 22,618 |
| ENERGJIA NETO E PRODHUAR NE SHQIPERI | 795,079 | 572,741 | 648,072 | 695,502 | 570,929 | 380,551 | 3,662,873 |

| ENERGJI NGA INTERKONEKSIONI | Janar | Shkurt | Mars | Prill | Maj | Qershor | 6M 2022 |
|--|---------|----------|----------|---------|---------|----------|-----------|
| Energji ne dhenie nga Interkoneksioni | 152,329 | 78,525 | 142,301 | 154,761 | 134,323 | 126,018 | 788,257 |
| Energji ne marrje nga Interkoneksioni | 192,108 | 239,364 | 283,751 | 126,652 | 171,655 | 365,508 | 1,379,039 |
| Ballanca Hyrje/Dalje nga Interkoneksioni | -39,779 | -160,839 | -141,450 | 28,109 | -37,332 | -239,491 | 590,781 |

| KONSUMI I ENERGJISE NE SHQIPERI | 6M 2022 |
|---|------------------|
| Konsumi i klientëve Tarifore | 2,308,317 |
| Konsumi i klientëve të furnizuar si FMF | 529,417 |
| Shitur klienteve si dem ekonomik | 9,918 |
| Konsumuar Tec Ballshi | 213 |
| Konsumi i Klientëve që përdorin rrjetin për energji e blerë ne treg të liberalizuar | 12,403 |
| Energji për Klientet ne treg të liberalizuar lidhur në OSSH me furnizues FTL | 13,600 |
| Konsumi për mbulimin e humbjeve | 841,869 |
| Konsumuar nga Klientet e lidhur në OST | 434,515 |
| Konsumuar nga OST (humbje +nevoja vetiake) | 103,400 |
| KONSUMI TOTAL 2022 (6-mujori) | 4,253,652 |

| PRODHIMI GJATE VITIT 2022 NGA CENTRALET E LIDHURA NE RRJETIN E TRANSMETIMIT (MWh) | | | | | | | | | | |
|---|---------|----------------------------------|--------|---------------|---------------|---------------|----------------|----------------|---------------|----------------|
| HECET DHE KAPACITETI | MW | SUBJEKTI | LIDHJA | JANAR | SHKURT | MARS | PRILL | MAJ | QERSHOR | 2022 (6-M) |
| Hec "Fierze" me fuqi 500 MW | 500,000 | "KESH" sha | 220 kV | 414,833 | 282,804 | 367,149 | 185,113 | 207,016 | 238,877 | 1,695,792 |
| Hec "Koman" me fuqi 600 MW | 600,000 | | 220 kV | | | | | | | |
| Hec "V. Dejes" me fuqi 250 MW | 250,000 | | 220 kV | | | | | | | |
| Hec Vlora me fuqi 98 MW | 98,000 | | 220 kV | | | | | | | |
| 1,695,792 | | | | | | | | | | |
| Hec "Ulez" me fuqi 25.2 MW | 25,200 | "Kurum International" sh.a. | 110 kV | 48,716 | 23,309 | 33,750 | 46,642 | 42,055 | 18,233 | 212,704 |
| Hec "Shkopen" me fuqi 24 MW | 24,000 | | 110 kV | | | | | | | |
| Hec "Bistrica 1" me fuqi 22.5 MW | 22,500 | | 110 kV | | | | | | | |
| Hec "Bistrica 2" me fuqi 5 Mw | 5,000 | | 110 kV | | | | | | | |
| Hec "Peshesh" me fuqi 27.94 MW | 27,940 | | 220 kV | | | | | | | |
| Hec "Fangu" me fuqi 74.6 MW | 74,600 | 220 kV | 11,761 | 10,920 | 6,352 | 16,041 | 6,604 | 2,506 | 54,185 | |
| Hec "Gjorice" me fuqi 73.000 MW | 73,000 | "Devoll Hydropower" sha | 110 kV | 35,654 | 21,085 | 16,488 | 29,410 | 10,562 | 4,335 | 117,533 |
| Hec "Banje" me fuqi 73 MW | 73,000 | "Devoll Hydropower" sha | 110 kV | 25,378 | 18,054 | 19,225 | 19,924 | 19,929 | 6,301 | 108,811 |
| Hec "Moglice" me fuqi 184 MW | 184,000 | "Devoll Hydropower" sha | 111 kV | 60,844 | 43,509 | 38,469 | 37,505 | 38,945 | 7,862 | 227,134 |
| Hec Qami-1 | 1,730 | "Lajthiza Invest" shpk | 110 kV | 0 | 0 | 34 | 750 | 72 | 0 | 856 |
| 721,223 | | | | | | | | | | |
| Hec "Ashta" me fuqi 48.2 MW | 48,200 | "Energi Ashta" shpk | 110 kV | 24,126 | 18,089 | 21,780 | 18,191 | 13,841 | 12,120 | 108,148 |
| 108,148 | | | | | | | | | | |
| Hec "Bishnica 2" me fuqi 2.5 MW | 2,500 | "HEC Bishnica 1.2" shpk | 110 kV | 784 | 924 | 786 | 2204 | 1,320 | 412 | 6,430 |
| Hec "Dardhe" me fuqi 5.8 MW | 5,800 | "Wenerg" shpk | 110 kV | 1,597 | 1,292 | 848 | 3979 | 1,972 | 230 | 9,918 |
| Hec "Truen" me fuqi 2.5 MW | 2,500 | "TRUEN" shpk | 110 kV | 601 | 531 | 551 | 1,010 | 1,036 | 605 | 4,333 |
| Hec "Termove" me fuqi 8.385 Mw | 8,385 | "TEODORI 2003" shpk | 110 kV | 13,819 | 8,667 | 9,509 | 16,552 | 11,315 | 5,141 | 65,003 |
| Hec "Gjorice" me fuqi 4.18 Mw (+h/c ne prodhim) | 29,610 | "DITEKO" shpk | 110 kV | 5,283 | 5,365 | 5,446 | 13,423 | 11,203 | 3,352 | 44,072 |
| Hec "Slabinje" me fuqi 13.8 MW | 13,800 | "Power Elektrik Slabinje" shpk | 110 kV | 5,000 | 5,000 | 5,000 | 5,000 | 5,000 | 5,000 | 5,000 |
| Hec "Bele 1" me fuqi 5 MW | 5,000 | "Euron Energy" shpk | 110 kV | 10,267 | 10,501 | 9,118 | 18,437 | 19,116 | 10,373 | 77,812 |
| Hec "Topoian 2" me fuqi 5.8 MW | 5,800 | "Alb-Energy" shpk | | | | | | | | |
| Hec "Bele 2" me fuqi 11 MW | 11,000 | "Energaj" shpk | | | | | | | | |
| Hec "Topoian 1" me fuqi 2.9 MW | 2,900 | "Energaj" shpk | | | | | | | | |
| Hec "Orgjost 1 Ri" me fuqi 4.8 MW | 4,800 | "Energaj" shpk | | | | | | | | |
| Hec "Cerunje-1" me fuqi 2.3 MW | 2,300 | "Energy partners AP" shpk | 110 kV | 865 | 624 | 591 | 4253 | 3210 | 926 | 10,469 |
| Hec "Cerunje-2" me fuqi 2.8 MW | 2,800 | "Energy partners AP" shpk | 110 kV | 2,988 | 2,581 | 2,079 | 5127 | 5394 | 2276 | 20,445 |
| Hec "Rrube" me fuqi 3.6 MW | 3,600 | "C & S Construction Energy" shpk | 110 kV | 2,989 | 2,579 | 2,203 | 3419 | 2,993 | 1,389 | 15,573 |
| Hec "Rapuni 1,2" me fuqi 4 dhe 4.1 MW | 8,100 | "C & S Energy" shpk | 110 kV | 2,267 | 1,628 | 1,790 | 9197 | 8,789 | 3,269 | 26,940 |
| Hec "Rapuni 3,4" me fuqi 8.857 MW | 8,850 | "Gio.Spa.POWER" shpk | 110 kV | 3,298 | 3,152 | 3,914 | 4844 | 2,154 | 875 | 18,237 |
| Hec "Lapari" me fuqi 13.62 MW | 13,620 | "Lengarica & Energy" shpk | 110 kV | 6,540 | 4,020 | 5,660 | 3,470 | 3,495 | 2,288 | 9005 |
| Hec "Lengarica" me fuqi 8.94 MW | 8,940 | "Erdat Lura" shpk | 110 kV | 1,262 | 1,320 | 911 | 2857 | 1,132 | 335 | 7,817 |
| Hec "Lura 1" me fuqi 6.54 MW | 6,540 | "Giure Rec" shpk | 110 kV | 3,363 | 3,619 | 2,122 | 8019 | 3,871 | 349 | 21,343 |
| Hec "Lura 2" me fuqi 4.02 MW | 4,020 | "Prele Energi" shpk | 110 kV | 1,238 | 1,178 | 1,275 | 3201 | 1,933 | 460 | 9,286 |
| Hec "Lura 3" me fuqi 5.66 MW | 5,660 | "REJ ENERGY" shpk | 110 kV | 2,068 | 3,385 | 1,362 | 6055 | 1,143 | 603 | 14,615 |
| Hec "Malla" me fuqi 5.455 MW | 5,455 | MC Inerte Lunzi | 110 kV | 2,904 | 3,033 | 3,342 | 8080 | 4,122 | 1,147 | 22,629 |
| Hec Prella me fuqi 14.97 MW | 14,970 | "Denas Power" shpk | 110 kV | 745 | 493 | 522 | 1945 | 1,815 | 465 | 5,986 |
| HEC Cemerica 1 | 0.88 | "HEC LLËNGE" sh.p.k | 110 kV | 752 | 660 | 677 | 2737 | 1,526 | 338 | 6,688 |
| HEC Cemerica 2 | 1.08 | Liria Energi shpk | 110 kV | 1,188 | 1,155 | 718 | 2440 | 627 | 67 | 6,196 |
| HEC Cemerica 3 | 2.1 | S'A'GA-MAT shpk | 110 kV | 684 | 371 | 313 | 1121 | 415 | 67 | 2,970 |
| HEC TUÇ | 4.47 | HEC Lashkiza shpk | 110 kV | 3,023 | 2,103 | 1,928 | 8421 | 4,215 | 792 | 20,482 |
| HEC Lumzi | 11 | HEC Darsi 1,2,3 | 110 kV | 2,742 | 2,938 | 2,071 | 5585 | 1,469 | 26 | 14,830 |
| Hec Denas | 14.5 | HEC Egriat | 110 kV | 930 | 660 | 606 | 2983 | 2,285 | 562 | 8,025 |
| Llënga 1 | 1.73 | REMI shpk | 110 kV | 6,637 | 6,191 | 4,160 | 11052 | 9,000 | 1,553 | 38,593 |
| Llënga 2 | 0.3 | SEKA Hydropower shpk | 110 kV | 1,494 | 1,484 | 1,063 | 2403 | 1,002 | 221 | 7,668 |
| Llënga 3 | 1.5 | HEC ARSTI | 110 kV | 2,459 | 2,493 | 1,022 | 4232 | 730 | 10 | 10,948 |
| HEC Shpella Poshte 2 | 2.3 | HEC KASKADA GJADER T1/344 | 110 kV | 5,147 | 2,754 | 2,634 | 12435 | 15,301 | 6,860 | 45,131 |
| HEC Germani 1 | 4.8 | S.P.E. Gjader shpk | 110 kV | 890 | 606 | 599 | 4168 | 3,486 | 3,606 | 13,354 |
| HEC Germani 2 | 1.5 | Dragobia Energy shpk | 110 kV | 1,188 | 1,155 | 718 | 2440 | 627 | 67 | 6,196 |
| Hec Lashkiza 1 | 4.076 | "Kalisi Hydropower" shpk | 110 kV | 684 | 371 | 313 | 1121 | 415 | 67 | 2,970 |
| Hec Lashkiza 2 | 0.882 | | 110 kV | 3,023 | 2,103 | 1,928 | 8421 | 4,215 | 792 | 20,482 |
| Hec Seta 1+2 | 7.454 | | 110 kV | 2,742 | 2,938 | 2,071 | 5585 | 1,469 | 26 | 14,830 |
| Hec Seta 3 | 2.722 | | 110 kV | 930 | 660 | 606 | 2983 | 2,285 | 562 | 8,025 |
| Hec Seta 4 | 4.724 | | 110 kV | 6,637 | 6,191 | 4,160 | 11052 | 9,000 | 1,553 | 38,593 |
| HEC Darsi 1,2,3 | 12.7 | | 110 kV | 1,494 | 1,484 | 1,063 | 2403 | 1,002 | 221 | 7,668 |
| HEC Egriat | 5.1 | | 110 kV | 2,459 | 2,493 | 1,022 | 4232 | 730 | 10 | 10,948 |
| HEC Seka & Zais/684 | 14.96 | | 110 kV | 5,147 | 2,754 | 2,634 | 12435 | 15,301 | 6,860 | 45,131 |
| HEC ARSTI | 3.13 | | 110 kV | 890 | 606 | 599 | 4168 | 3,486 | 3,606 | 13,354 |
| HEC KASKADA GJADER T1/344 | 24.9 | | 110 kV | 5,147 | 2,754 | 2,634 | 12435 | 15,301 | 6,860 | 45,131 |
| HEC-et Dragobia&Ceremi/686 | 21.9 | | 110 kV | 890 | 606 | 599 | 4168 | 3,486 | 3,606 | 13,354 |
| HEC Vëleshica 1,2 | 13.9 | | 110 kV | 890 | 606 | 599 | 4168 | 3,486 | 3,606 | 13,354 |
| | | | | 85,752 | 75,786 | 64,448 | 179,183 | 126,219 | 46,853 | 578,240 |

| PRODHIMI GJATE VITIT 2022 NGA CENTRALET E LIDHURA NE RRJETIN E SHPERNDARJES (MWh) | | | | | | | | | | |
|---|-------|-------------------------------|--------|-------|--------|-------|-------|-------|---------|--------|
| HECET DHE KAPACITETI | MW | SUBJEKTI | LIDHJA | JANAR | SHKURT | MARS | PRILL | MAJ | QERSHOR | 2022 |
| Hec "Lanabregas" me fuqi 5 MW | 5,000 | "Hec Lanabregas" sha | 35 | 2,465 | 2,172 | 2,273 | 2,451 | 2,471 | 2,129 | 13,962 |
| Hec "Lemie" me fuqi 400 kW | 0,400 | "EMIKEL 2003" sh.p.k | 10kV | 229 | 199 | 211 | 244 | 265 | 256 | 1,403 |
| Hec "Çorovode" me fuqi 200 kW | 0,200 | | 10kV | 63 | 68 | 69 | 104 | 101 | 28 | 433 |
| Hec "Smokthine" me fuqi 9.2 MW | 9,200 | "Albania Green Energy" sh.p.k | 35 kV | 4,312 | 3,133 | 3,358 | 3,253 | 2,650 | 2,172 | 18,878 |
| Hec "Bulqize" me fuqi 0.6 MW (Diber) | 0,600 | | 10kV | 107 | 80 | 76 | 204 | 182 | 106 | 755 |
| Hec "Homesh" me fuqi 0.395 MW (Diber) | 0,395 | | 10kV | - | 52 | 39 | 47 | 46 | 20 | 205 |
| Hec "Zerqan" me fuqi 0.625 MW (Diber) | 0,625 | | 6kV | 100 | 99 | 118 | 116 | 111 | 97 | 641 |
| Hec "Arras" me fuqi 4.8 MW (Diber) | 4,800 | | 20kV | 1,788 | 1,343 | 1,118 | 2,490 | 2,110 | 444 | 9,293 |
| Hec "Orgjost" me fuqi 1.2 MW (Kukes) | 1,200 | | 10kV | 542 | 532 | 511 | 703 | 748 | 611 | 3,646 |
| Hec "Lekbibaj" me fuqi 1.4 MW (Tropoje) | 1,400 | | 10kV | 693 | 529 | 598 | 745 | 845 | 758 | 4,168 |
| Hec "Dukagjin" me fuqi 0.64 MW (Shkoder) | 0,640 | | 10kV | 146 | 142 | 164 | 134 | 189 | 229 | 1,004 |
| Hec "Marjan" me fuqi 0.2 MW (Korce) | 0,200 | | 10kV | - | - | - | - | 0 | 0 | - |
| Hec "Lozhan" me fuqi 0.1 MW (Korce) | 0,100 | | 10kV | 37 | 52 | 66 | 83 | 47 | 15 | 300 |
| Hec "Barmash" me fuqi 0.83 MW (Kolonje) | 0,830 | | 10kV | 252 | 180 | 221 | 246 | 126 | 53 | 1,078 |
| Hec "Treske 2" me fuqi 0.25 MW (Korce) | 0,250 | | 10kV | 113 | 88 | 97 | 121 | 75 | 30 | 525 |
| Hec "Nikolice" me fuqi 0.7 MW (Korce) | 0,700 | "Balkan Green Energy" shpk | 10kV | 175 | 70 | 76 | 226 | 273 | 182 | 1,002 |
| Hec "Funares" me fuqi 1.92 MW (Librazhd) | 1,920 | | 10kV | 818 | 686 | 732 | 690 | 613 | 455 | 3,995 |
| Hec "Lunik" me fuqi 0.2 MW (Librazhd) | 0,200 | | 10kV | 136 | 101 | 116 | 129 | 114 | 56 | 652 |
| Hec "Kerpace" me fuqi 0.42 MW (Gramsh) | 0,420 | | 6kV | 52 | 39 | 45 | 67 | 73 | 63 | 340 |
| Hec "Ujanik" me fuqi 0.63 MW (Skrapar) | 0,630 | | 10kV | 174 | 86 | 64 | 235 | 206 | 95 | 860 |
| Hec "Borsh" me fuqi 0.25 MW (Sarande) | 0,250 | | 6kV | 121 | 91 | 116 | 110 | 69 | 59 | 565 |
| Hec "Leshnice" me fuqi 0.38 MW (Sarande) | 0,380 | | 10/6kV | 32 | 87 | 91 | 69 | 42 | 25 | 346 |
| Hec "Velcan" me fuqi 1.2 MW (Korce) | 1,200 | | 10kV | 322 | 299 | 358 | 632 | 602 | 192 | 2,404 |
| Hec "Muhur" me fuqi 0.25 MW (Diber) | 0,250 | | 6kV | 92 | 76 | 98 | 71 | 70 | 1 | 409 |
| Hec "Rajan" me fuqi 1.02 MW (Kolonje) | 1,020 | | 10kV | 457 | 294 | 409 | 478 | 240 | 112 | 1,991 |
| Hec "Lure" me fuqi 0.75 MW (Diber) | 0,750 | | 10kV | - | - | - | 14 | 140 | 17 | 171 |
| Hec "Gjang" me fuqi 2.96 MW | 2,960 | "Spahiu Gjang" sh.p.k. | 35 kV | - | - | - | 1,119 | 375 | 1,003 | 2,497 |
| Hec "Bogove" me fuqi 2.5 MW | 2,500 | "Wonder power" sha | 35 kV | 366 | 428 | 400 | 1,422 | 1,215 | 450 | 4,281 |
| Hec "Xhyre" me fuqi 570 kW | 0,570 | "Amal" sh.p.k | 10kV | 206 | 176 | 193 | 254 | 246 | 203 | 1,278 |
| Hec "Stranik" me fuqi 4.6 MW | 4,600 | "Hydroinvest 1" shpk | 35kV | 1,387 | 1,479 | 1,443 | 2,641 | 1,355 | 312 | 8,616 |
| Hec "Zall Tore" me fuqi 3 MW | 3,000 | | 35kV | 1,235 | 1,322 | 1,361 | 1,976 | 1,165 | 497 | 7,556 |
| Hec "Kios" me fuqi 1.95 MW | 1,950 | "Malido-Energji" shpk | 6kV | 374 | 236 | 194 | 612 | 337 | 74 | 1,827 |
| Hec "Borje" me fuqi 1.5 MW | 1,500 | "HIDROALBANIA Energji" shpk | 35kV | 1,170 | 1,067 | 1,112 | 3,542 | 3,376 | 1,654 | 11,921 |
| Hec "Cernaleve" me fuqi 2.95 MW | 2,950 | "HIDROALBANIA Energji" shpk | 35kV | 461 | 461 | 430 | 1,951 | 1,580 | 619 | 5,503 |
| Hec "Cernaleve 1" me fuqi 3.27 MW | 3,270 | "HIDROALBANIA Energji" shpk | 35kV | 502 | 502 | 452 | 2,179 | 1,744 | 681 | 6,060 |
| Hec "Murdar 1" me fuqi 2.68 MW | 2,680 | "HydroEnergy" shpk | 10kV | 983 | | | | | | |

| | | | | | | | | | | |
|---|--------|---|---------|-------|-------|-------|-------|-------|-------|--------|
| Hec "Peshke" me fuqi 3.43 MW | 3.430 | "Koka & Ergi Energy Peshk" shpk | 35kV | 1,076 | 850 | 743 | 2,174 | 1,013 | 183 | 6,039 |
| Hec "Labinot-Mal" me fuqi 0.25 MW | 0.250 | "Ansara Koncension" shpk | 6kV | 40 | 32 | 35 | 45 | 31 | 16 | 200 |
| Hec "Pobreg" me fuqi 12.3 MW | 12.300 | "Energy Plus" shpk | 35kV | 3,533 | 3,461 | 2,989 | 6,732 | 6,561 | 3,337 | 26,614 |
| Hec "Vlushe" me fuqi 14.2 MW | 14.200 | "Hec Vlushe" shpk | 35kV | 2,304 | 3,432 | 2,849 | 8,098 | 4,663 | 872 | 22,217 |
| Hec "Belesova 1" me fuqi 0.150 MW | 0.150 | "Korkis 2009" shpk | 6kV | 16 | 30 | 29 | 26 | 0 | 0 | 101 |
| Hec "Faqekuq 1.2" me fuqi (3 MW; 3.4 MW) | 6.400 | "HP OSTROVICA" shpk | 35kV | 863 | 734 | 840 | 3,719 | 3,123 | 610 | 9,890 |
| Hec "Shemri" me fuqi 1 MW | 1.000 | "Erald Energjistik" shpk | 10kV | 344 | 385 | 241 | 680 | 274 | 0 | 1,923 |
| Hec "Mgulle" me fuqi 0.28 MW | 0.280 | | 10kV | 249 | 230 | 218 | 268 | 183 | 6 | 1,155 |
| Hec "Kryezi 1" me fuqi 0.6 MW | 0.600 | "Bekim Energjistik" shpk | 10kV | 310 | 405 | 227 | 565 | 164 | 0 | 1,671 |
| Hec "Selishte" me fuqi 2 MW | 2.000 | "Selishte" shpk | 35kV | 592 | 468 | 356 | 1,069 | 667 | 207 | 3,360 |
| Hec "Carshove" me fuqi 1.5 Mw | 1.500 | "ERMA MP" shpk | 10kV | 302 | 325 | 531 | 504 | 201 | 136 | 1,998 |
| Hec "Ura e Dashit" me fuqi 1,2MW | 1.200 | | 10kV | 928 | 1,124 | 1,502 | 1,688 | 817 | 249 | 6,308 |
| Hec "Gizavesh" me fuqi 0.5 MW | 0.500 | "Dosku Energy" shpk | 10kV | 301 | 304 | 299 | 322 | 337 | 224 | 1,787 |
| Hec "Koka 1" me fuqi 3.2 MW | 3.200 | "Snow Energy" shpk | 35kV | 485 | 200 | 204 | 1,663 | 566 | 73 | 3,191 |
| Hec "Stravaj" me fuqi 3.6 MW | 3.600 | "Stravaj Energji" shpk | 35kV | 1,153 | 1,291 | 1,251 | 2,428 | 1,263 | 398 | 7,784 |
| Hec "Picar 1" me fuqi 0.2 MW | 0.200 | "Peshku Picar 1" shpk | 6kV | 99 | 69 | 57 | 47 | 42 | 30 | 345 |
| Hec "Vertop" me fuqi 1,52 Mw | 1.520 | "Hydro Sallirari Energy" shpk | 35kV | 222 | 217 | 266 | 321 | 284 | 97 | 1,387 |
| Hec "Martanesh" me fuqi 10.5 MW | 10.500 | "Albanian Power" shpk | 35kV | 1,495 | 1,178 | 1,074 | 3,856 | 1,632 | 187 | 9,422 |
| Hec "Verba 1.2" me fuqi (2 MW, 3 MW) | 5.000 | "Hydro power Plant Of Korca" shpk | 35kV | 432 | 280 | 337 | 1,918 | 2,597 | 742 | 6,307 |
| Hec "Fterra" me fuqi 0.8 MW | 1.080 | "Hidro Borshi" shpk | 35kV | 958 | 954 | 1,024 | 806 | 716 | 580 | 5,039 |
| Hec "Ostren i Vogel" me fuqi 0.32 MW | 0.320 | "Lu & Co Eco Energy" shpk | 10kV | 84 | 77 | 87 | 110 | 109 | 92 | 558 |
| Hec "Kozel" me fuqi 0.5 MW | 0.500 | | 10kV | 115 | 81 | 127 | 145 | 129 | 11 | 609 |
| Hec "Helmes 1" me fuqi 0.8 MW | 0.800 | "E.T.H.H." shpk | 10kV | 258 | 207 | 232 | 522 | 229 | 8 | 1,456 |
| Hec "Helmes 2" me fuqi 0.5, MW | 0.500 | | 10kV | 134 | 85 | 96 | 270 | 156 | 6 | 748 |
| Hec "Qafezeze" me fuqi 0.4 MW | 0.400 | "Caushi Energji" shpk | 10kV | 450 | 395 | 427 | 525 | 374 | 76 | 2,246 |
| Hec "Trebisht" me fuqi 1.775 MW | 1.775 | "SA.GLE.Kompani" shpk | 10kV | 420 | 289 | 158 | 1,041 | 616 | 34 | 2,559 |
| Hec "Mollaj" me fuqi 0.6 MW | 0.600 | "Energi Xhaci" shpk | 10kV | 59 | 68 | 95 | 172 | 65 | 35 | 494 |
| Hec "Tucep" me fuqi 0.4 MW | 0.400 | "Tucep" shpk | 10kV | 275 | 247 | 276 | 280 | 290 | 228 | 1,595 |
| Hec "Treska4" me fuqi 3.6 MW | 3.600 | | 35kV | 1,079 | 932 | 953 | 1,701 | 624 | 414 | 5,705 |
| Hec "Treska3" me fuqi 0.3 MW | 0.300 | "Hec-Treske" shpk | 35kV | 143 | 115 | 137 | 218 | 122 | 55 | 790 |
| Hec "Treska 2T" 5 me fuqi 0.62 MW | 0.620 | | 35kV | 294 | 246 | 262 | 424 | 198 | 98 | 1,522 |
| Hec "Sotire 1 & 2" me fuqi 2.2 MW | 2.200 | "Hidro Energy Sotire" shpk | 35kV | 432 | 307 | 254 | 922 | 1,042 | 624 | 3,581 |
| Hec "Shutine" me fuqi 2.4 MW | 2.400 | "Shutina energji" shpk | 10kV | 364 | 363 | 202 | 608 | 172 | 0 | 1,709 |
| Hec "Cekrez 1.2" me fuqi (0.23 MW; 0.43 MW) | 0.660 | "Zall Herr Energji 2011" shpk | 6kV | 386 | 333 | 347 | 332 | 333 | 297 | 2,028 |
| Hec "Qarr" me fuqi 1 MW | 1.000 | "Hec Qarr & Kaltani" shpk | 35kV | 682 | 400 | 446 | 783 | 247 | 185 | 2,744 |
| Hec "Bisak" me fuqi 1.3 MW | 1.300 | "Bardhgjana" shpk | 6kV | 513 | 155 | 334 | 699 | 365 | 51 | 2,116 |
| Hec "Shales" me fuqi 1.08 MW | 1.080 | | 35kV | - | - | 13 | - | 0 | 0 | 13 |
| Hec "Strelca" me fuqi 1.174 MW | 1.174 | "Gjoka Konstruksion Energji" shpk | 35kV | 583 | 348 | 418 | 1,241 | 458 | 187 | 3,326 |
| Hec "Shpelle" me fuqi 400 kW | 0.400 | "Sarolli" sh.p.k | 10kV | 102 | 82 | 88 | 309 | 202 | 48 | 830 |
| Hec "Bicaj" me fuqi 3.1 MW | 3.100 | "EN-KU" sh.p.k | 10kV | - | - | - | - | 0 | 0 | - |
| Hec "Leskovik 1" me fuqi 1072 kW | 1.072 | | 10kV | 50 | 44 | 46 | 48 | 48 | 35 | 272 |
| Hec "Leskovik 2" me fuqi 1100 kW | 1.100 | "Maksi Elektrik" sh.p.k | 10kV | 62 | 52 | 56 | 58 | 57 | 45 | 329 |
| Hec "Orenje" me fuqi 875 kW | 0.875 | "Juana" sh.p.k | 10kV | 178 | 107 | 86 | 161 | 120 | 46 | 698 |
| Hec "Tamarë" me fuqi 750 kW | 0.750 | "WTS Energji" shpk | 10kV | - | - | - | - | - | - | - |
| Hec "Benë" me fuqi 1000 kW | 1.000 | "Marjakaj" shpk | 6kV | 180 | 157 | 167 | 195 | 130 | 0 | 829 |
| Hec "Vithkuq" me fuqi 2,715 MW | 2.715 | "Favina 1" shpk | 35/10kV | 1,611 | 867 | 997 | 1,626 | 1,181 | 428 | 6,709 |
| Hec "Selce" me fuqi 1600 kW | 1.600 | "Selca Energji" shpk | 10kV | 349 | 343 | 450 | 685 | 684 | 279 | 2,792 |
| Hec "Kumbull- Merkurth" me fuqi 0.83 Mw | 0.830 | "DN & NAT Energy" shpk | 6kV | 127 | 81 | 54 | 445 | 432 | 69 | 1,209 |
| Hec "Sasaj" me fuqi 8.6 MW | 8.600 | "Energo - Sas" shpk | 35kV | 2,678 | 2,275 | 2,665 | 2,345 | 2,067 | 1,106 | 13,136 |
| Hec "Tervol" me fuqi 10.6 MW | 10.600 | "Hec i Tervolit" shpk | 35kV | 2,331 | 3,156 | 2,484 | 6,391 | 2,600 | 647 | 17,610 |
| Hec "Radove" me fuqi 2.5 MW | 2.500 | "MTC Energy" shpk | 10kV | 1,155 | 745 | 1,125 | 1,250 | 600 | 422 | 5,297 |
| Hec "Gurshpat 1" me fuqi 0.84 MW, | 0.840 | | 10kV | 433 | 298 | 296 | 547 | 431 | 121 | 2,126 |
| Hec "Gurshpat 2" me fuqi 0.83 MW | 0.830 | "Gurshpat Energy" shpk | 10kV | 507 | 365 | 371 | 681 | 394 | 136 | 2,453 |
| Hec "Bistrica 3" me fuqi 1.57 MW, | 1.570 | "Bistrica 3 Energy" shpk | 6kV | 846 | 842 | 901 | 647 | 681 | 643 | 4,560 |
| Hec "Hurdhas 1" me fuqi 1,71MW, | 1.710 | "Komp Energji" shpk | 6kV | 1,090 | 1,024 | 1,375 | 2,091 | 858 | 83 | 6,521 |
| Hec "Perrollaj" me fuqi 0.5 MW | 0.500 | "Fatlum" shpk | 10kV | 80 | 63 | 70 | 167 | 56 | 1 | 438 |
| Hec "Koxheraj" me fuqi 0.62 MW | 0.620 | "Koxherri Energji" shpk | 10kV | 139 | 121 | 128 | 219 | 112 | 52 | 771 |
| Hec "Kacni" me fuqi 3.87 MW | 3.870 | "Kisi-Bio-Energji" shpk | 20kV | 529 | 59 | 115 | 1,429 | 1,214 | 192 | 3,538 |
| Hec "Lena 1" me fuqi 1.95 MW,; | 1.950 | | 35kV | - | - | - | - | - | - | - |
| Hec "Lena 2" me fuqi 2,3 MW | 2.300 | "Gama Energy" shpk | 35kV | 387 | 300 | 421 | 1,804 | 606 | 0 | 3,518 |
| Hec "Lena 2A" me fuqi 0.25 MW | 0.250 | | 35kV | - | - | - | - | - | - | - |
| Hec "Driza" me fuqi 3.408 MW | 3.408 | "Mesopotam Energy" shpk | 35kV | 434 | 324 | 371 | 280 | 200 | 148 | 1,758 |
| Hec Strelca 1,2,3 (1.504 MW, 0.325 MW, 3.52 MW) | 5.349 | "Strelca Energy" shpk | 35kV | 969 | 683 | 812 | 3,079 | 2,966 | 842 | 9,352 |
| Hec "Ujanik 2" me fuqi 2.5 MW | 2.500 | "HP Ujaniku Energy" shpk | 35kV | 506 | 500 | 361 | 1,018 | 489 | 48 | 2,923 |
| Hec "Nishove" me fuqi 1.36 MW | 1.360 | "Nishova Energy" shpk | 35kV | 82 | 48 | 98 | 73 | 0 | 0 | 301 |
| Hec "Shtika" me fuqi 1.3 MW | 1.300 | "Perparimi SK" shpk | 10kV | 273 | 377 | 529 | 400 | 141 | 6 | 1,725 |
| Hec "Ballenja" me fuqi 1.9 MW | 1.900 | "Ballenja Power Martanesh" shpk | 35kV | 249 | 145 | 164 | 943 | 240 | 0 | 1,741 |
| Hec Gavran 1 | 0.998 | "Gavran Energy" shpk | 35kV | 359 | 265 | 242 | 661 | 307 | 36 | 1,871 |
| Hec Gavran 2 | 1.215 | "Gavran Energy" shpk | 35kV | 240 | 138 | 132 | 610 | 345 | 87 | 1,551 |
| Hec Kasollet e Seles 1 | 4.000 | "Xhango Energji" shpk | 35kV | 977 | 762 | 941 | 2,269 | 1,349 | 430 | 6,729 |
| Hec Holta Kabash | 2.200 | | 35kV | 965 | 1,313 | 1,102 | 2,089 | 981 | 250 | 6,700 |
| Hec Holta Porocan | 3.300 | HEC Kabash Porocan shpk | 35kV | - | - | - | - | - | - | - |
| Hec Lusen 1 | 0.315 | "Eurobiznes" shpk | 35kV | 47 | 34 | 37 | 153 | 52 | 15 | 338 |
| Hec Ura e Fanit | 1.000 | "Aven As Energji" sha | 35kV | 549 | 467 | 458 | 513 | 528 | 520 | 3,035 |
| HEC Gorice | 1.747 | "THE BLUE STAR" sh.p.k | 35kV | 411 | 368 | 423 | 1,132 | 780 | 88 | 3,202 |
| HEC Kabash 1&2 | 5.800 | "Univers Energji" shpk | 35kV | 446 | - | 773 | 1,047 | 350 | 38 | 2,654 |
| HEC "Tucep 2" | 1.7 | "DUKA T2" shpk | 35kV | 285 | 258 | 380 | 363 | 369 | 251 | 1,907 |
| Hec Dobrene Tomorrice | 2.4 | DAAB Energy Group shpk | 35kV | 326 | 301 | 385 | 462 | 276 | 175 | 1,925 |
| Hec Razdoll | 0.765 | Hidro Vizion shpk (I pa licens nga ERE) | 35kV | 135 | 57 | 76 | 478 | 469 | 86 | 1,301 |
| Hec Dragostunje | 3.1 | "HEC-i Dragostunje" shpk | 35kV | 1,034 | 1,891 | 1,115 | 4,348 | 2,304 | 82 | 10,774 |
| Hec Stebleve | 3.4 | "PURE ENERGY STEBLEVA" shpk | 35kV | 180 | 163 | 84 | 617 | 491 | 61 | 1,597 |
| Hec Zerec 1 | 0.55 | | 35kV | 492 | 502 | 520 | 1,061 | 717 | 168 | 3,459 |
| Hec Zerec 2 | 1.315 | "EnRel Hydro" shpk | 35kV | 492 | 502 | 520 | 1,061 | 717 | 168 | 3,459 |
| Hec Shëngjon 1 | 0.651 | | 35kV | 252 | 162 | 125 | 435 | 291 | 65 | 1,331 |
| Hec Shëngjon 2 | 0.356 | "EDIANT" sh.p.k. | 35kV | - | - | - | - | - | - | - |
| HEC Blac | 1.3 | "BLAC ENERGY" sh.p.k | 35kV | - | - | - | - | 0 | 0 | - |
| HEC Qarrishtë | 0.3 | "IDL-2005" SHPK | 35kV | 120 | 62 | 48 | 174 | 217 | 141 | 762 |
| HEC Vendresh | 0.456 | "HP VENDRESH ENERGY" SHPK | 35kV | 33 | 53 | 95 | 49 | 15 | 2 | 245 |
| HEC "Antena" | 1.105 | "DERBI-E" shpk | 35kV | 273 | 260 | 164 | 622 | 115 | 0 | 1,434 |
| HEC "Kamenice" | 0.973 | HP Kamenica shpk | 10kV | 473 | 217 | 306 | 641 | 200 | 101 | 1,938 |
| HEC "Qvteze" | 0.9 | Muso hec Qvteze | 10kV | 242 | 185 | 275 | 463 | 215 | 113 | 1,493 |
| HEC Marjan Gura e Vesheve | 0.63 | Marituda Shpk | 10kV | 94 | 38 | 40 | 258 | 379 | 190 | 999 |
| HEC Skatinë | 2.677 | Skatina Hec Shpk | 10kV | 680 | 554 | 590 | 988 | 240 | 26 | 3,078 |
| HEC Kapariel | 0.2 | ABV Konstruksion Shpk | 10kV | 38 | 52 | 57 | 53 | 46 | 29 | 274 |
| HEC Letaj | 0.54 | Asi-Tre Shpk | 10kV | 69 | 62 | 62 | 156 | 62 | 23 | 434 |
| HEC Nice | 2.133 | MP-HEC Shpk | 35kV | 188 | 231 | 293 | 587 | 173 | 46 | 1,519 |
| HEC Meshurdhe | 1.8 | SIMA-Com Shpk | 10kV | 807 | 783 | 458 | 1,094 | 409 | 9 | 3,560 |
| HEC Thanez | 1.95 | AFRIMI K Shpk | 35kV | 840 | 1,036 | 606 | 1,295 | 346 | 72 | 4,195 |
| HEC OSOJE | 1.9 | OSOJA HPP shpk | 35kV | 1,393 | 1,087 | 1,224 | 1,412 | 861 | 299 | 6,276 |
| Hec Voskopoje | 1.9 | FAVINA 1 shpk | 35kV | 888 | 797 | 999 | 1,124 | 411 | 216 | 4,435 |

| | | | | | | | | | | |
|------------------|------------|----------------------------|----|---------------|---------------|---------------|----------------|----------------|---------------|----------------|
| Hec Nderfushas | 1.34 | SGD Energji shpk | 35 | 132 | 80 | 87 | 513 | 114 | 0 | 925 |
| Hec Rreshen | 0.38 | Nikolli Energy shpk | 10 | 129 | 113 | 106 | 151 | 113 | 40 | 651 |
| Hec Gurra | 0.5 | Uleza Nderitim shpk | 6 | 123 | 94 | 99 | 90 | 106 | 87 | 599 |
| Hec Vile | 1.994 | Hydro Power Panariti shpk | 35 | 552 | 598 | 573 | 1,153 | 574 | 135 | 3,585 |
| Hec Dukona | 0.800 | Dukona shpk | 20 | 58 | 71 | 108 | 96 | 58 | 19 | 409 |
| Hec Prevall | 1.750 | Gega-G shpk | 35 | 957 | 564 | 487 | 1,220 | 639 | 152 | 4,019 |
| HEC Camerice | 0.800 | Rei Energy shpk | 35 | 688 | 306 | 399 | 818 | 819 | 145 | 3,176 |
| Hec Stror | 2.000 | Era Hydro shpk | 35 | 830 | 1,094 | 940 | 2,017 | 905 | 257 | 6,044 |
| Hec Mivas | 1.940 | Elva 2001 shpk | 35 | 488 | 707 | 621 | 964 | 475 | 76 | 3,331 |
| Hec Spathare | 1.038 | Lucente concensionare shpk | 10 | 650 | 303 | 318 | 628 | 727 | 348 | 2,974 |
| Hec Miraka | 0.600 | Kuari Blace shpk | 10 | 68 | 98 | 79 | 207 | 37 | 9 | 498 |
| Hec Shegjin | 2.000 | Iarba Energji shpk | 10 | 145 | 145 | 204 | 358 | 242 | 113 | 1,207 |
| hec Dobrunje | 0.840 | W.T.S. Energji shpk | 10 | 191 | 167 | 219 | 433 | 421 | 103 | 1,534 |
| Hec Muras | 2 | Mateo& Co shpk | 10 | 616 | 656 | 540 | 1,324 | 1,220 | 196 | 4,552 |
| Hec Trojet | 0.9 | Trojjet Energji shpl | 10 | 211 | 232 | 215 | 356 | 169 | 1 | 1,184 |
| Hec Deni | 0.85 | ASI TRE shpk | 35 | 104 | 123 | 84 | 333 | 134 | 13 | 791 |
| Hec Kamican | 1.86 | IGI 2005 shpk | 35 | 818 | 596 | 568 | 1,349 | 663 | 89 | 4,073 |
| Hec Vardar | 1.97 | Gerti shpk | 35 | 1,252 | 649 | 684 | 1,658 | 888 | 197 | 5,327 |
| Hec Stavec | 6.5 | Koka Ergi Stavec shpk | 35 | 3,014 | 2,095 | 1,830 | 5,005 | 2,323 | 853 | 15,119 |
| Hec Kallis | 2.13 | ERDY Energy shpk | 35 | 1,053 | 919 | 571 | 1,024 | 663 | 334 | 4,563 |
| Hec Gjinar | 0.83 | Erdi Gas shpk | 10 | 107 | 101 | 105 | 223 | 105 | 40 | 680 |
| Hec Backa 1 | 3.36 | Kroi Mbret shpk | 35 | 1,090 | 1,202 | 1,269 | 2,440 | 1,243 | 215 | 7,457 |
| Hec Plepi | 2.28 | Domi Tee shpk | 35 | 83 | 36 | 74 | 574 | 226 | 41 | 1,034 |
| Hec Zall Xhuxhe | 4.7 | Hec Zall Xhuxhe | 35 | 639 | 513 | 359 | 1,327 | 564 | 280 | 3,683 |
| Hec Pisha | 1.9 | Green TECH energy systems | 35 | 189 | - | 104 | 249 | 178 | 25 | 745 |
| Hec Lingjanca1&2 | 2.2 | "Rei-Energji"shpk | 35 | 551 | 630 | 616 | 796 | 319 | 218 | 3,130 |
| Hec Guri i Zi | 1.7 | "Aris Albania"shpk | 35 | 37 | 39 | 58 | 574 | 185 | 49 | 942 |
| Hec Drita | - | "Brecani R.O.S.P." shpk | 20 | - | 720 | 568 | 1,039 | 1,446 | 837 | 4,610 |
| Hec Terfori | - | - | - | - | - | - | 199 | 452 | 500 | 1,151 |
| | 318 | | | 85,532 | 76,304 | 76,752 | 158,670 | 100,880 | 38,713 | 536,851 |

| PRODIMI GJATE VITIT 2022 NGA CENTRALET FOTOVOLTAIKE TË LIDHURA NE RRJETIN E SHPERNDARJES (MWh) | | | | | | | | | | |
|--|-----------|---------------------------------|--------|-----------------|-----------------|-----------------|-----------------|-----------------|-----------------|---------------|
| CENTRAL FOTOVOLTAIK | MW | SUBJEKTI | LIDHJA | JANAR | SHKURT | MARS | PRILL | MAJ | QERSHOR | 2022 (6-M) |
| UKKO (pa sistemuarne sistem) | 1 | "UKKO"sha (Ujsjell Kanal Korce) | | | | | | | | |
| Seman – 2 | 2 | "SEMAN2SUN" sh.p.k | 35 kV | 234.22 | 273.49 | 353.08 | 397.74 | 465.85 | 463.89 | 2,188 |
| Topojë | 2 | "SONNE" sh.p.k | 35 kV | 232.33 | 272.37 | 353.43 | 396.13 | 463.19 | 461.37 | 2,179 |
| Topojë 2 | 2 | "AED SOLAR" sh.p.k | 35 kV | 239.26 | 280.49 | 362.88 | 406.63 | 474.81 | 472.92 | 2,237 |
| Topojë (Sheq Marinas) | 2 | "AGE SUNPOWER" sh.p.k | 35 kV | 230.65 | 271.04 | 351.96 | 395.50 | 463.26 | 461.16 | 2,174 |
| Topojë (Sheq Marinas) 2 | 2 | "SEMAN SUNPOWER" sh.p.k | 35 kV | 247.38 | 290.01 | 371.63 | 415.87 | 486.43 | 482.30 | 2,294 |
| Seman I solar | 2 | "SEMAN I SOLAR" sh.p.k | 35 kV | 247.73 | 283.01 | 357.56 | 394.38 | 447.65 | 436.94 | 2,167 |
| FV Lugano | 2 | ES 2019 sh.p.k | 35 kV | 274.31 | 312.06 | 395.27 | 435.28 | 496.02 | 484.03 | 2,397 |
| FV SMART WATT | 2 | SMART WATT sh.p.k | 35 kV | 273.82 | 310.19 | 392.86 | 432.48 | 491.82 | 482.49 | 2,384 |
| Tren Bilisht | 2 | "RTS" sh.p.k | 35 kV | 250.54 | 247.35 | 324.83 | 349.27 | 430.00 | 406.17 | 2,008 |
| STATKRAFT Renewbles albani PV Llundrues banje | 2 | "STATKRAFT" | 35 kV | - | - | - | 51.53 | 75.90 | 84.99 | 212 |
| Plug, Lushnje | 2 | "AEE" sh.p.k | 10 kv | 251.70 | 341.10 | 362.40 | 398.10 | 510.00 | 514.50 | 2,378 |
| | 23 | | | 2,481.95 | 2,881.11 | 3,625.90 | 4,072.90 | 4,804.93 | 4,750.76 | 22,618 |

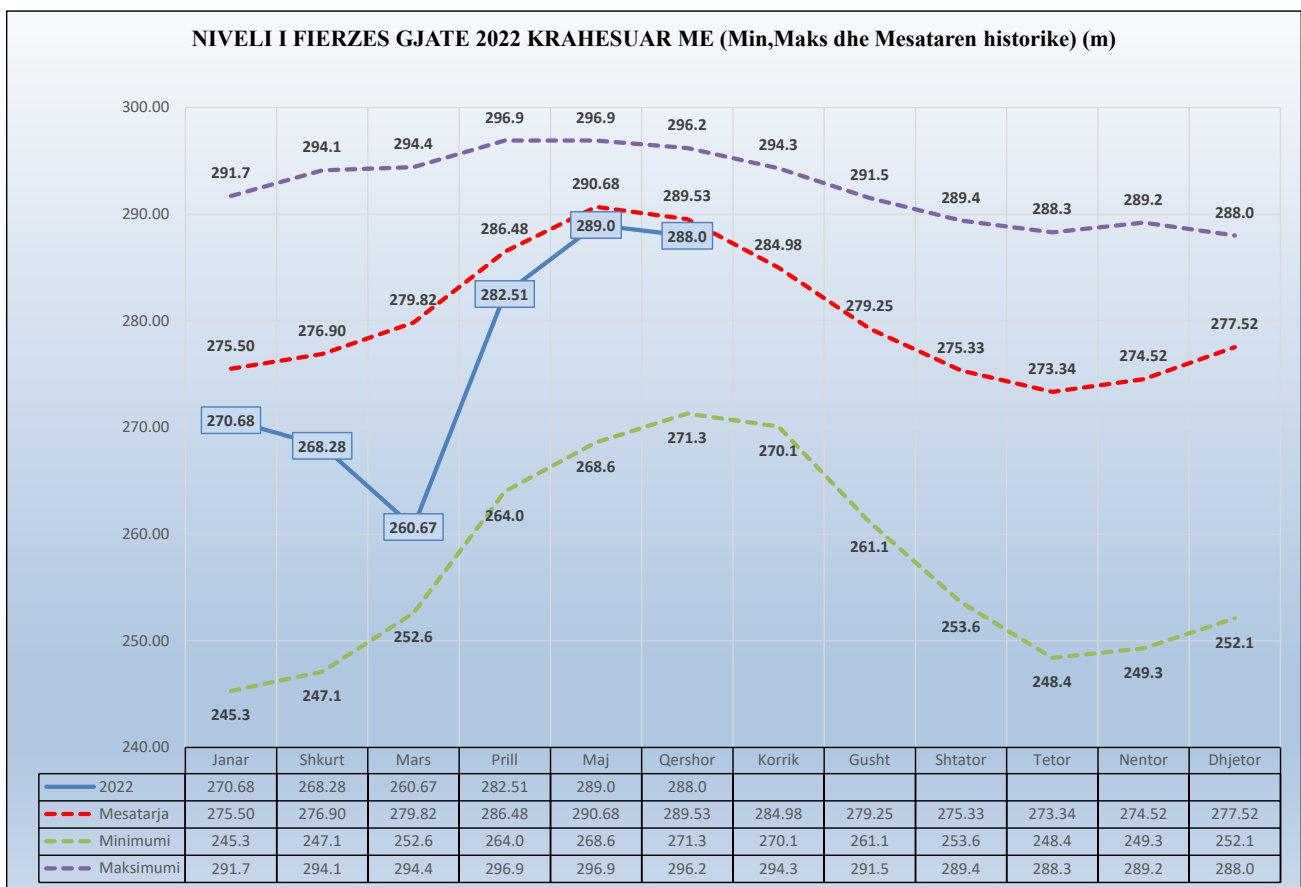
Kapaciteti Instaluar i gjithë prodhuesve **2.607** MW

3,662,872

Burimi: OST sha; KESH sha; OSSH sha; FTL sha; (OSHEE Group sha)

| | NIVELI I FIERZES 1991-2022 | | | | | | | | | | | |
|------|----------------------------|--------|--------|--------|-------|---------|--------|-------|---------|-------|--------|---------|
| | Janar | Shkurt | Mars | Prill | Maj | Qershor | Korrik | Gusht | Shtator | Tetor | Nentor | Dhjetor |
| 1991 | 254.4 | 260.8 | 268.6 | 279.9 | 293.4 | 296.1 | 294.0 | 291.5 | 289.4 | 288.3 | 288.8 | 285.1 |
| 1992 | 278.0 | 274.1 | 268.0 | 278.8 | 281.0 | 279.6 | 275.2 | 268.7 | 263.9 | 271.4 | 281.9 | 280.6 |
| 1993 | 275.2 | 265.3 | 264.7 | 278.5 | 280.5 | 277.3 | 271.0 | 261.1 | 253.6 | 249.9 | 255.6 | 270.2 |
| 1994 | 254.4 | 260.8 | 268.6 | 279.9 | 293.4 | 296.1 | 294.0 | 291.5 | 289.4 | 288.3 | 288.8 | 285.1 |
| 1995 | 253.8 | 260.3 | 262.5 | 275.3 | 289.0 | 288.7 | 284.5 | 282.2 | 288.2 | 283.8 | 279.9 | 287.5 |
| 1996 | 287.1 | 288.7 | 286.5 | 294.7 | 295.8 | 293.1 | 287.6 | 282.2 | 285.1 | 284.3 | 289.2 | 291.3 |
| 1997 | 289.4 | 284.5 | 281.7 | 285.2 | 294.1 | 292.0 | 287.0 | 280.0 | 272.9 | 272.4 | 270.8 | 277.2 |
| 1998 | 273.7 | 270.0 | 265.2 | 278.9 | 288.1 | 287.4 | 281.8 | 277.6 | 276.0 | 277.1 | 279.0 | 277.1 |
| 1999 | 272.7 | 275.6 | 281.5 | 290.5 | 295.9 | 293.3 | 288.3 | 279.5 | 271.0 | 257.6 | 263.6 | 276.9 |
| 2000 | 276.4 | 276.7 | 276.8 | 286.9 | 286.6 | 280.1 | 273.5 | 267.5 | 261.6 | 248.4 | 249.3 | 252.1 |
| 2001 | 253.6 | 258.2 | 275.1 | 282.9 | 287.6 | 283.8 | 273.7 | 271.1 | 269.2 | 263.6 | 263.2 | 252.1 |
| 2002 | 245.3 | 247.1 | 252.6 | 264.0 | 268.6 | 271.3 | 270.1 | 267.8 | 274.3 | 286.1 | 285.3 | 284.0 |
| 2003 | 291.1 | 289.5 | 286.3 | 287.0 | 292.3 | 290.3 | 285.9 | 280.8 | 276.0 | 282.6 | 285.6 | 283.3 |
| 2004 | 284.7 | 290.8 | 293.4 | 296.0 | 296.2 | 296.2 | 293.1 | 286.3 | 281.1 | 280.0 | 286.1 | 288.0 |
| 2005 | 281.2 | 281.5 | 293.3 | 296.1 | 295.6 | 294.1 | 286.7 | 277.2 | 266.5 | 256.9 | 253.6 | 279.0 |
| 2006 | 283.5 | 288.6 | 294.4 | 295.9 | 296.5 | 295.9 | 293.8 | 290.2 | 285.3 | 278.7 | 266.2 | 256.2 |
| 2007 | 256.1 | 263.7 | 272.0 | 276.8 | 276.8 | 274.8 | 268.5 | 263.6 | 261.8 | 261.1 | 275.8 | 282.1 |
| 2008 | 285.1 | 289.7 | 290.9 | 295.5 | 295.3 | 295.7 | 294.3 | 288.6 | 283.9 | 280.9 | 285.2 | 286.5 |
| 2009 | 283.6 | 281.8 | 283.4 | 292.5 | 293.7 | 292.4 | 288.0 | 281.2 | 276.2 | 271.6 | 266.3 | 280.1 |
| 2010 | 290.1 | 289.2 | 293.9 | 296.0 | 296.3 | 294.4 | 291.8 | 288.6 | 284.9 | 285.2 | 284.3 | 287.5 |
| 2011 | 281.6 | 274.4 | 275.0 | 276.6 | 281.0 | 286.1 | 284.7 | 279.0 | 273.9 | 268.2 | 261.6 | 264.5 |
| 2012 | 265.8 | 267.7 | 262.0 | 280.2 | 293.4 | 294.4 | 288.4 | 280.4 | 261.4 | 261.6 | 269.0 | 276.6 |
| 2013 | 278.3 | 281.5 | 294.8 | 296.9 | 296.9 | 294.2 | 289.7 | 283.6 | 280.8 | 281.4 | 282.5 | 276.1 |
| 2014 | 275.1 | 277.5 | 274.6 | 285.3 | 292.9 | 294.9 | 291.7 | 286.8 | 285.5 | 285.0 | 284.8 | 286.3 |
| 2015 | 288.7 | 289.4 | 292.2 | 296.3 | 296.1 | 293.3 | 287.5 | 280.1 | 272.1 | 275.4 | 278.9 | 275.9 |
| 2016 | 289.9 | 292.4 | 291.8 | 296.5 | 296.2 | 295.6 | 290.5 | 285.4 | 283.3 | 288.4 | 288.9 | 281.6 |
| 2017 | 271.5 | 277.7 | 280.9 | 278.7 | 281.6 | 272.4 | 270.2 | 268.0 | 271.0 | 264.6 | 269.6 | 289.9 |
| 2018 | 289.7 | 292.0 | 295.0 | 296.5 | 296.4 | 296.0 | 294.0 | 287.5 | 277.9 | 270.2 | 266.5 | 267.3 |
| 2019 | 267.3 | 268.2 | 272.7 | 279.9 | 289.9 | 292.7 | 287.6 | 278.5 | 274.2 | 268.6 | 273.2 | 275.6 |
| 2020 | 271.62 | 271.98 | 283.50 | 288.55 | 293.6 | 291.7 | 284.6 | 276.5 | 273.5 | 274.1 | 268.7 | 272.7 |
| 2021 | 291.70 | 294.10 | 292.60 | 294.30 | 296.7 | 291.7 | 282.7 | 274.3 | 271.3 | 267.7 | 267.8 | 275.1 |
| 2022 | 270.68 | 268.28 | 260.67 | 282.51 | 289.0 | 288.0 | | | | | | |

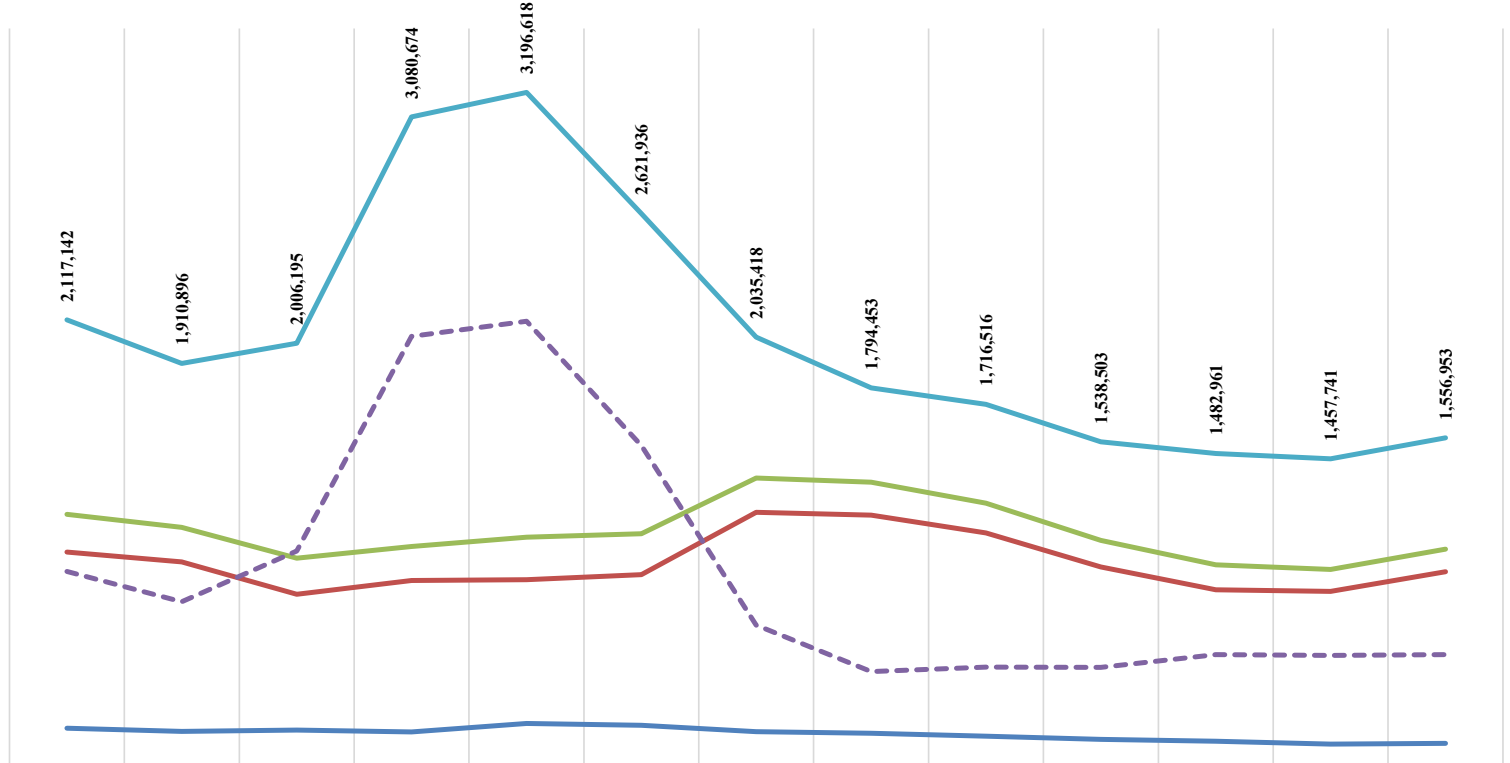
| | Janar | Shkurt | Mars | Prill | Maj | Qershor | Korrik | Gusht | Shtator | Tetor | Nentor | Dhjetor |
|-----------|--------|--------|--------|--------|--------|---------|--------|--------|---------|--------|--------|---------|
| 2022 | 270.68 | 268.28 | 260.67 | 282.51 | 289.0 | 288.0 | | | | | | |
| Mesatarja | 275.50 | 276.90 | 279.82 | 286.48 | 290.68 | 289.53 | 284.98 | 279.25 | 275.33 | 273.34 | 274.52 | 277.52 |
| Minimumi | 245.3 | 247.1 | 252.6 | 264.0 | 268.6 | 271.3 | 270.1 | 261.1 | 253.6 | 248.4 | 249.3 | 252.1 |
| Maksimumi | 291.7 | 294.1 | 294.4 | 296.9 | 296.9 | 296.2 | 294.3 | 291.5 | 289.4 | 288.3 | 289.2 | 288.0 |



HUMBJET NE RRJETIN E SHPERNDARJES 2009-2022 (MWh)

| | 2009 | 2010 | 2011 | 2012 | 2013 | 2014 | 2015 | 2016 | 2017 | 2018 | 2019 | 2020 | 2021 | 2022 (6-Mujori) |
|--------------------------------|-----------|-----------|-----------|-----------|-----------|-----------|-----------|-----------|-----------|-----------|-----------|-----------|-----------|--------------------|
| HUMBJE TEKNIKE NE TL (N/ST) | 178,738 | 163,546 | 170,937 | 161,831 | 201,684 | 193,208 | 162,725 | 155,629 | 141,707 | 125,974 | 117,739 | 103,729 | 107,340 | 52,287 |
| HUMBJE TEKNIKE NE ZONAT E OSSH | 1,015,450 | 968,535 | 814,826 | 879,616 | 884,360 | 908,416 | 1,203,793 | 1,190,872 | 1,106,007 | 944,587 | 836,561 | 828,906 | 921,330 | 508,229 |
| TOTALI I HUMBJEVE TEKNIKE OSSH | 1,194,188 | 1,132,081 | 985,763 | 1,041,447 | 1,086,044 | 1,101,624 | 1,366,518 | 1,346,501 | 1,247,714 | 1,070,560 | 954,300 | 932,635 | 1,028,670 | 560,516 |
| HUMBJE JOTOKNIKE OSSH | 922,954 | 778,815 | 1,020,432 | 2,039,227 | 2,110,575 | 1,520,312 | 668,900 | 447,952 | 468,802 | 467,943 | 528,661 | 525,106 | 528,283 | 281,368 |
| TOTALI I HUMBJEVE OSSH | 2,117,142 | 1,910,896 | 2,006,195 | 3,080,674 | 3,196,618 | 2,621,936 | 2,035,418 | 1,794,453 | 1,716,516 | 1,538,503 | 1,482,961 | 1,457,741 | 1,556,953 | 841,884 |

HUMBJET NE RRJETIN E SHPERNDARJES 2009-2021 (MWh)



| | 2009 | 2010 | 2011 | 2012 | 2013 | 2014 | 2015 | 2016 | 2017 | 2018 | 2019 | 2020 | 2021 |
|--------------------------------|-----------|-----------|-----------|-----------|-----------|-----------|-----------|-----------|-----------|-----------|-----------|-----------|-----------|
| HUMBJE TEKNIKE NE TL (N/ST) | 178,738 | 163,546 | 170,937 | 161,831 | 201,684 | 193,208 | 162,725 | 155,629 | 141,707 | 125,974 | 117,739 | 103,729 | 107,340 |
| HUMBJE TEKNIKE NE ZONAT E OSSH | 1,015,450 | 968,535 | 814,826 | 879,616 | 884,360 | 908,416 | 1,203,793 | 1,190,872 | 1,106,007 | 944,587 | 836,561 | 828,906 | 921,330 |
| TOTALI I HUMBJEVE TEKNIKE OSSH | 1,194,188 | 1,132,081 | 985,763 | 1,041,447 | 1,086,044 | 1,101,624 | 1,366,518 | 1,346,501 | 1,247,714 | 1,070,560 | 954,300 | 932,635 | 1,028,670 |
| HUMBJE JOTOKNIKE OSSH | 922,954 | 778,815 | 1,020,432 | 2,039,227 | 2,110,575 | 1,520,312 | 668,900 | 447,952 | 468,802 | 467,943 | 528,661 | 525,106 | 528,283 |
| TOTALI I HUMBJEVE OSSH | 2,117,142 | 1,910,896 | 2,006,195 | 3,080,674 | 3,196,618 | 2,621,936 | 2,035,418 | 1,794,453 | 1,716,516 | 1,538,503 | 1,482,961 | 1,457,741 | 1,556,953 |

Burimi: OSSH sha / (OSHEE Group sha)

FATURIM-ARKETIMET DHE NDRYSHIMI I GJENDES DEBITORE GJTE VITIT 2014 (000/LEKE)

| Viti 2014 | Te arketueshme | | Faturuar 2014 | | Arketimi per fakturat e 2014 | | Arketimi per fakturat e 2007/2013 | | Arketimi total | | Te Arketueshme per energjine e faturuar ne vitin 2014 | | Ndryshimi i gjenjes se Llogarive te arketueshme gjate vitit 2014 | | Shuarje Detyrimesh me VKM nr 198, dt 03.04.2014 | |
|--------------|----------------|---|---------------|---|------------------------------|---|-----------------------------------|-----|----------------|---|---|----|--|----|---|----|
| | 2 | 1 | 5 | 4 | 7 | 6 | 7 | 6+7 | 8 | 9 | 10 | 11 | 12 | 13 | 14 | 15 |
| Total | | | | | | | | | | | | | | | | |

FATURIM-ARKETIMET DHE NDRYSHIMI I GJENDES DEBITORE GJTE VITIT 2015 (000/LEKE)

| Viti 2015 | Te arketueshme | | Faturuar 2015 | | Arketimi per fakturat e 2015 | | Arketimi per fakturat e 2007/2014 | | Arketimi total | | Te Arketueshme per energjine e faturuar ne vitin 2015 | | Ndryshimi i gjenjes se Llogarive te arketueshme gjate vitit 2015 | | Shuarje Detyrimesh | |
|--------------|----------------|---|---------------|---|------------------------------|---|-----------------------------------|-----|----------------|---|---|----|--|----|--------------------|----|
| | 2 | 1 | 5 | 4 | 7 | 6 | 7 | 6+7 | 8 | 9 | 10 | 11 | 12 | 13 | 14 | 15 |
| Total | | | | | | | | | | | | | | | | |

FATURIM-ARKETIMET DHE NDRYSHIMI I GJENDES DEBITORE GJTE VITIT 2016 (000/LEKE)

| Viti 2016 | Te arketueshme | | Faturuar 2016 | | Arketimi per fakturat e 2016 | | Arketimi per fakturat e 2007/2015 | | Arketimi total | | Te Arketueshme per energjine e faturuar ne vitin 2016 | | Ndryshimi i gjenjes se Llogarive te arketueshme gjate vitit 2016 | | Shuarje Detyrimesh | |
|--------------|----------------|---|---------------|---|------------------------------|---|-----------------------------------|-----|----------------|---|---|----|--|----|--------------------|----|
| | 2 | 1 | 5 | 4 | 7 | 6 | 7 | 6+7 | 8 | 9 | 10 | 11 | 12 | 13 | 14 | 15 |
| Total | | | | | | | | | | | | | | | | |

FATURIM-ARKETIMET DHE NDRYSHIMI I GJENDES DEBITORE GJTE VITIT 2017 (000/LEKE)

| Viti 2017 | Te arketueshme | | Faturuar 2017 | | Arketimi per fakturat e 2017 | | Arketimi per fakturat e 2007/2016 | | Arketimi total | | Te Arketueshme per energjine e faturuar ne vitin 2017 | | Ndryshimi i gjenjes se Llogarive te arketueshme gjate vitit 2017 | | Shuarje Detyrimesh | |
|--------------|----------------|---|---------------|---|------------------------------|---|-----------------------------------|-----|----------------|---|---|----|--|----|--------------------|----|
| | 2 | 1 | 5 | 4 | 7 | 6 | 7 | 6+7 | 8 | 9 | 10 | 11 | 12 | 13 | 14 | 15 |
| Total | | | | | | | | | | | | | | | | |

FATURIM-ARKETIMET DHE NDRYSHIMI I GJENDES DEBITORE GJTE VITIT 2018 (000/LEKE)

| Viti 2018 | Te arketueshme | | Faturuar 2018 | | Arketimi per fakturat e 2018 | | Arketimi per fakturat e 2007/2017 | | Arketimi total | | Te Arketueshme per energjine e faturuar ne vitin 2018 | | Ndryshimi i gjenjes se Llogarive te arketueshme gjate vitit 2018 | | Shuarje Detyrimesh | |
|--------------|----------------|---|---------------|---|------------------------------|---|-----------------------------------|-----|----------------|---|---|----|--|----|--------------------|----|
| | 2 | 1 | 5 | 4 | 7 | 6 | 7 | 6+7 | 8 | 9 | 10 | 11 | 12 | 13 | 14 | 15 |
| Total | | | | | | | | | | | | | | | | |

FATURIM-ARKETIMET DHE NDRYSHIMI I GJENDES DEBITORE GJTE VITIT 2019 (000/LEKE)

| Viti 2019 | Te arketueshme | | Faturuar 2019 | | Arketimi per fakturat e 2019 | | Arketimi per fakturat e 2007/2018 | | Arketimi total | | Te Arketueshme per energjine e faturuar ne vitin 2019 | | Ndryshimi i gjenjes se Llogarive te arketueshme gjate vitit 2019 | | Shuarje Detyrimesh | |
|--------------|----------------|---|---------------|---|------------------------------|---|-----------------------------------|-----|----------------|---|---|----|--|----|--------------------|----|
| | 2 | 1 | 5 | 4 | 7 | 6 | 7 | 6+7 | 8 | 9 | 10 | 11 | 12 | 13 | 14 | 15 |
| Total | | | | | | | | | | | | | | | | |

FATURIM-ARKETIMET DHE NDRYSHIMI I GJENDES DEBITORE GJTE VITIT 2020 (000/LEKE)

| Viti 2020 | Te arketueshme | | Faturuar 2020 | | Arketimi per fakturat e 2020 | | Arketimi per fakturat e 2007/2019 | | Arketimi total | | Te Arketueshme per energjine e faturuar ne vitin 2020 | | Ndryshimi i gjenjes se Llogarive te arketueshme gjate vitit 2020 | | Shuarje Detyrimesh | |
|--------------|----------------|---|---------------|---|------------------------------|---|-----------------------------------|-----|----------------|---|---|----|--|----|--------------------|----|
| | 2 | 1 | 5 | 4 | 7 | 6 | 7 | 6+7 | 8 | 9 | 10 | 11 | 12 | 13 | 14 | 15 |
| Total | | | | | | | | | | | | | | | | |

FATURIM-ARKETIMET DHE NDRYSHIMI I GJENDES DEBITORE GJTE VITIT 2021 (000/LEKE)

| Viti 2021 | Te arketueshme | | Faturuar 2021 | | Arketimi per fakturat e 2021 | | Arketimi per fakturat e 2007/2020 | | Arketimi total | | Te Arketueshme per energjine e faturuar ne vitin 2021 | | Ndryshimi i gjenjes se Llogarive te arketueshme gjate vitit 2021 | | Shuarje Detyrimesh | |
|--------------|----------------|---|---------------|---|------------------------------|---|-----------------------------------|-----|----------------|---|---|----|--|----|--------------------|----|
| | 2 | 1 | 5 | 4 | 7 | 6 | 7 | 6+7 | 8 | 9 | 10 | 11 | 12 | 13 | 14 | 15 |
| Total | | | | | | | | | | | | | | | | |

FATURIM-ARKETIMET DHE NDRYSHIMI I GJENDES DEBITORE GJTE VITIT 2022 (000/LEKE)

| Viti 2022 | Te arketueshme | | Faturuar 2022 | | Arketimi per fakturat e 2022 | | Arketimi per fakturat e 2007/2021 | | Arketimi total | | Te Arketueshme per energjine e faturuar ne vitin 2022 | | Ndryshimi i gjenjes se Llogarive te arketueshme gjate vitit 2022 | | Shuarje Detyrimesh | |
|--------------|----------------|---|---------------|---|------------------------------|---|-----------------------------------|-----|----------------|---|---|----|--|----|--------------------|----|
| | 2 | 1 | 5 | 4 | 7 | 6 | 7 | 6+7 | 8 | 9 | 10 | 11 | 12 | 13 | 14 | 15 |
| Total | | | | | | | | | | | | | | | | |

ECURIA E GJENDJES DEBITORE NDAJ OPERATORIT TË SHPËRNDARJES SIPAS KATEGORIVE 2010-2022 (000 000/LEKË)

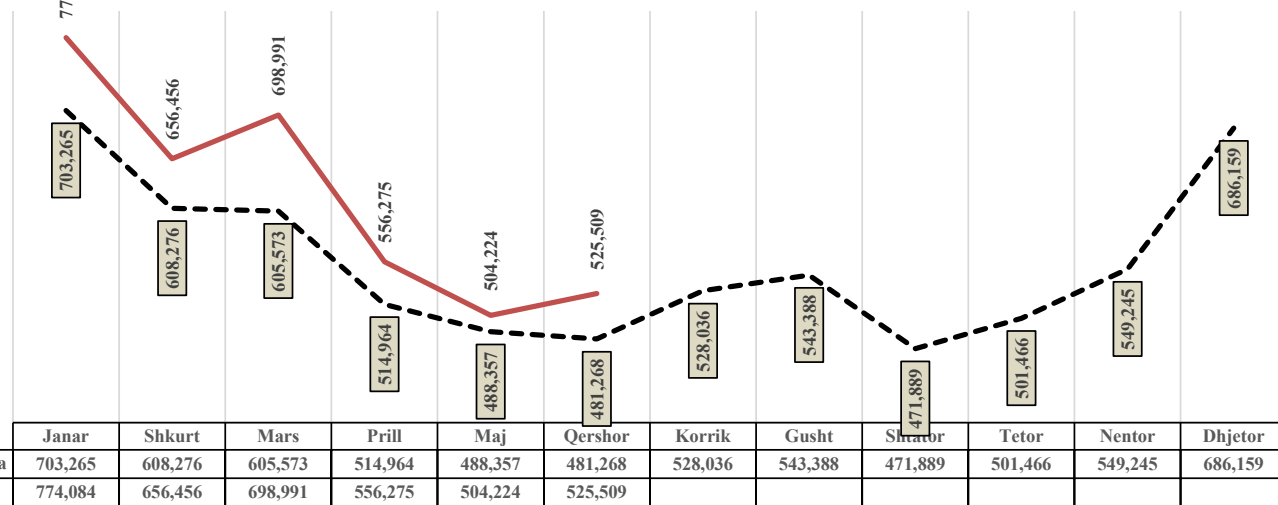
| 2010 | 2011 | 2012 | 2013 | 2014 | 2015 | 2016 | 2017 | 2018 | 2019 | 2020 | 2021 | 2022 | | | | | | | | | | | | | | | | | | | | | | | | | | | | | | | | | | | | | | | | | | | | | | | | | | | | | | | | | | | | | | | | | | | | | | | | | | | | | | | | | | | | | | | | | | | | | | | | | | | | | | | | | | | | | | | | | | | | | | | | | | | | | | | | | | | | | | | | | | | | | | | | | | | | | | | | | | | | | | | | | | | | | | | | | | | | | | | | | | | | | | | | | | | | | | | | | | | | | | | | | | | | | | | | | | | | | | | | | | | | | | | | | | | | | | | | | | | | | | | | | | | | | | | | | | | | | | | | | | | | | | | | | | | | | | | | | | | | | | | | | | | | | | | | | | | | | | | | | | | | | | | | | | | | | | | | | | | | | | | | | | | | | | | | | | | | | | | | | | | | | | | | | | | | | | | | | | | | | | | | | | | | | | | | | | | | | | | | | | | | | | | | | | | | | | | | | | | | | | | | | | | | | | | | | | | | | | | | | | | | | | | | | | | | | | | | | | | | | | | | | | | | | | | | | | | | | | | | | | | | | | | | | | | | | | | | | | | | | | | | | | | | | | | | | | | | | | | | | | | | | | | | | | | | | | | | | | | | | | | | | | | | | | | | | | | | | | | | | | | | | | | | | | | | | | | | | | | | | | | | | | | | | | | | | | | | | | | | | | | | | | | | | | | | | | | | | | | | | | | | | | | | | | | | | | | | | | | | | | | | | | | | | | | | | | | | | | | | | | | | | | | | | | | | | | | | | | | | | | | | | | | | | | | | | | | | | | | | | | | | | | | | | | | | | | | | | | | | | | | | | | | | | | | | | | | | | | | | | | | | | | | | | | | | | | | | | | | | | | | | | | | | | | | | | | | | | | | | | | | | | | | | | | | | | | | | | | | | | | | | | | | | | | | | | | | | | | | | | | | | | | | | | | | | | | | | | | | | | | | | | | | | | | | | | | | | | | | | | | | | | | | | | | | | | | | | | | | | | | | | | | | | | | | | | | | | | | | | | | | | | | | | | | | | | | | | | | | | | | | | | | | | | | | | | | | | | | | | | | | | | | | | | | | | | | | | | | | | | | | | | | | | | | | | | | | | | | | | | | | | | | | | | | | | | | | | | | | | | | | | | | | | | | | | | | | | | | | | | | | | | | | | | | | | | | | | | | | | | | | | | | | | | | | | | | | | | | | | | | | | | | | | | | | | | | | | | | | | | | | | | | | | | | | | | | | | | | | | | | | | | | | | | | | | | | | | | | | | | | | | | | | | |
|-------|-------|-------|--------|-------|-------|-------|-------|--------|--------|-------|-------|-------|--------|------|-------|-------|-------|--------|-----|-------|-------|-------|--------|--------|-------|-------|-------|--------|---------|-------|-------|-------|--------|--------|-------|-------|-------|--------|--------|-------|-------|-------|--------|--------|-------|-------|-------|--------|-------|-------|-------|-------|--------|------|-------|-------|-------|--------|-----|-------|-------|-------|--------|--------|-------|-------|-------|--------|---------|-------|-------|-------|--------|--------|-------|-------|-------|--------|--------|-------|-------|-------|--------|--------|-------|-------|-------|--------|-------|-------|-------|-------|--------|------|-------|-------|-------|--------|-----|-------|-------|-------|--------|--------|-------|-------|-------|--------|---------|-------|-------|-------|--------|--------|-------|-------|-------|--------|--------|-------|-------|-------|--------|--------|-------|-------|-------|--------|-------|-------|-------|-------|--------|------|-------|-------|-------|--------|-----|-------|-------|-------|--------|--------|-------|-------|-------|--------|---------|-------|-------|-------|--------|--------|-------|-------|-------|--------|--------|-------|-------|-------|--------|--------|-------|-------|-------|--------|-------|-------|-------|-------|--------|------|-------|-------|-------|--------|-----|-------|-------|-------|--------|--------|-------|-------|-------|--------|---------|-------|-------|-------|--------|--------|-------|-------|-------|--------|--------|-------|-------|-------|--------|--------|-------|-------|-------|--------|-------|-------|-------|-------|--------|------|-------|-------|-------|--------|-----|-------|-------|-------|--------|--------|-------|-------|-------|--------|---------|-------|-------|-------|--------|--------|-------|-------|-------|--------|--------|-------|-------|-------|--------|--------|-------|-------|-------|--------|-------|-------|-------|-------|--------|------|-------|-------|-------|--------|-----|-------|-------|-------|--------|--------|-------|-------|-------|--------|---------|-------|-------|-------|--------|--------|-------|-------|-------|--------|--------|-------|-------|-------|--------|--------|-------|-------|-------|--------|-------|-------|-------|-------|--------|------|-------|-------|-------|--------|-----|-------|-------|-------|--------|--------|-------|-------|-------|--------|---------|-------|-------|-------|--------|--------|-------|-------|-------|--------|--------|-------|-------|-------|--------|--------|-------|-------|-------|--------|-------|-------|-------|-------|--------|------|-------|-------|-------|--------|-----|-------|-------|-------|--------|--------|-------|-------|-------|--------|---------|-------|-------|-------|--------|--------|-------|-------|-------|--------|--------|-------|-------|-------|--------|--------|-------|-------|-------|--------|-------|-------|-------|-------|--------|------|-------|-------|-------|--------|-----|-------|-------|-------|--------|--------|-------|-------|-------|--------|---------|-------|-------|-------|--------|--------|-------|-------|-------|--------|--------|-------|-------|-------|--------|--------|-------|-------|-------|--------|-------|-------|-------|-------|--------|------|-------|-------|-------|--------|-----|-------|-------|-------|--------|--------|-------|-------|-------|--------|---------|-------|-------|-------|--------|--------|-------|-------|-------|--------|--------|-------|-------|-------|--------|--------|-------|-------|-------|--------|-------|-------|-------|-------|--------|------|-------|-------|-------|--------|-----|-------|-------|-------|--------|--------|-------|-------|-------|--------|---------|-------|-------|-------|--------|--------|-------|-------|-------|--------|--------|-------|-------|-------|--------|--------|-------|-------|-------|--------|-------|-------|-------|-------|--------|------|-------|-------|-------|--------|-----|-------|-------|-------|--------|--------|-------|-------|-------|--------|---------|-------|-------|-------|--------|--------|-------|-------|-------|--------|--------|-------|-------|-------|--------|--------|-------|-------|-------|--------|-------|-------|-------|-------|--------|------|-------|-------|-------|--------|-----|-------|-------|-------|--------|--------|-------|-------|-------|--------|---------|-------|-------|-------|--------|--------|-------|-------|-------|--------|--------|-------|-------|-------|--------|--------|-------|-------|-------|--------|-------|-------|-------|-------|--------|------|-------|-------|--------|--------|-----|-------|-------|--------|--------|--------|-------|-------|--------|--------|---------|-------|-------|--------|--------|--------|-------|-------|--------|--------|--------|-------|-------|--------|--------|--------|-------|-------|--------|--------|-------|-------|-------|--------|--------|------|-------|-------|--------|--------|-----|-------|-------|--------|--------|--------|-------|-------|--------|--------|---------|-------|-------|--------|--------|--------|-------|-------|--------|--------|--------|-------|-------|--------|--------|--------|-------|-------|--------|--------|-------|-------|-------|--------|--------|------|-------|-------|--------|--------|-----|-------|-------|--------|--------|--------|-------|-------|--------|--------|---------|-------|-------|--------|--------|--------|-------|-------|--------|--------|--------|-------|-------|--------|--------|--------|-------|-------|--------|--------|-------|-------|-------|--------|--------|------|-------|-------|--------|--------|-----|-------|-------|--------|--------|--------|--------|-------|--------|--------|---------|--------|-------|--------|--------|--------|--------|-------|--------|--------|--------|--------|-------|--------|--------|--------|--------|-------|--------|--------|-------|--------|-------|--------|--------|------|--------|-------|--------|--------|-----|--------|-------|--------|--------|--------|--------|-------|--------|--------|---------|--------|-------|--------|--------|--------|--------|-------|--------|--------|--------|--------|-------|--------|--------|--------|--------|-------|--------|--------|-------|--------|-------|--------|--------|------|--------|-------|--------|--------|-----|--------|-------|--------|--------|--------|--------|-------|--------|--------|---------|--------|-------|--------|--------|--------|--------|-------|--------|--------|--------|--------|-------|--------|---------|--------|--------|-------|--------|---------|-------|--------|-------|--------|---------|------|--------|-------|--------|---------|-----|--------|-------|--------|---------|--------|--------|-------|--------|---------|---------|--------|-------|--------|---------|--------|--------|-------|--------|---------|--------|--------|-------|--------|---------|--------|--------|-------|--------|---------|-------|--------|-------|--------|---------|------|--------|-------|--------|---------|-----|--------|-------|--------|---------|--------|--------|-------|--------|---------|---------|--------|-------|--------|---------|--------|--------|-------|--------|---------|--------|--------|-------|--------|---------|--------|--------|-------|--------|---------|-------|--------|-------|--------|---------|------|--------|-------|--------|---------|-----|--------|-------|--------|---------|--------|--------|--------|--------|---------|---------|--------|--------|--------|---------|--------|--------|--------|--------|---------|--------|--------|--------|--------|---------|--------|--------|--------|--------|---------|-------|--------|--------|--------|---------|------|--------|--------|--------|---------|-----|--------|--------|--------|---------|--------|--------|--------|--------|---------|---------|--------|--------|--------|---------|--------|--------|--------|--------|---------|--------|--------|--------|--------|---------|--------|--------|--------|--------|---------|-------|--------|--------|--------|---------|------|--------|--------|--------|---------|-----|--------|--------|--------|---------|--------|--------|--------|--------|---------|---------|--------|--------|--------|---------|--------|--------|--------|--------|---------|--------|--------|--------|--------|---------|--------|--------|--------|--------|---------|-------|--------|--------|--------|---------|------|--------|--------|--------|---------|-----|--------|--------|--------|---------|--------|--------|--------|--------|---------|---------|--------|--------|--------|---------|--------|--------|--------|--------|---------|--------|--------|--------|--------|---------|--------|--------|--------|--------|---------|-------|--------|--------|--------|---------|------|--------|--------|--------|---------|-----|--------|--------|--------|---------|--------|--------|--------|--------|---------|---------|--------|--------|--------|---------|--------|--------|--------|--------|---------|--------|--------|--------|--------|---------|--------|--------|--------|--------|---------|-------|--------|--------|--------|---------|------|--------|--------|--------|---------|-----|--------|--------|--------|---------|--------|--------|--------|--------|---------|---------|--------|--------|--------|---------|--------|--------|---|
| 2,279 | 1,274 | 4,419 | 26,142 | Janar | 2,979 | 1,395 | 4,656 | 21,175 | Shkurt | 2,988 | 1,378 | 4,716 | 21,175 | Mars | 3,088 | 1,378 | 4,716 | 21,175 | Maj | 3,170 | 1,372 | 4,841 | 22,348 | Corrik | 3,252 | 1,250 | 4,391 | 22,766 | Gjeshor | 3,276 | 1,295 | 4,584 | 23,546 | Korrik | 3,300 | 1,300 | 4,600 | 23,600 | Shator | 3,350 | 1,350 | 4,650 | 24,100 | Nentor | 3,400 | 1,400 | 4,700 | 24,600 | Janar | 3,450 | 1,450 | 4,750 | 25,100 | Mars | 3,500 | 1,500 | 4,800 | 25,600 | Maj | 3,550 | 1,550 | 4,850 | 26,100 | Corrik | 3,600 | 1,600 | 4,900 | 26,600 | Gjeshor | 3,650 | 1,650 | 4,950 | 27,100 | Korrik | 3,700 | 1,700 | 5,000 | 27,600 | Shator | 3,750 | 1,750 | 5,050 | 28,100 | Nentor | 3,800 | 1,800 | 5,100 | 28,600 | Janar | 3,850 | 1,850 | 5,150 | 29,100 | Mars | 3,900 | 1,900 | 5,200 | 29,600 | Maj | 3,950 | 1,950 | 5,250 | 30,100 | Corrik | 4,000 | 2,000 | 5,300 | 30,600 | Gjeshor | 4,050 | 2,050 | 5,350 | 31,100 | Korrik | 4,100 | 2,100 | 5,400 | 31,600 | Shator | 4,150 | 2,150 | 5,450 | 32,100 | Nentor | 4,200 | 2,200 | 5,500 | 32,600 | Janar | 4,250 | 2,250 | 5,550 | 33,100 | Mars | 4,300 | 2,300 | 5,600 | 33,600 | Maj | 4,350 | 2,350 | 5,650 | 34,100 | Corrik | 4,400 | 2,400 | 5,700 | 34,600 | Gjeshor | 4,450 | 2,450 | 5,750 | 35,100 | Korrik | 4,500 | 2,500 | 5,800 | 35,600 | Shator | 4,550 | 2,550 | 5,850 | 36,100 | Nentor | 4,600 | 2,600 | 5,900 | 36,600 | Janar | 4,650 | 2,650 | 5,950 | 37,100 | Mars | 4,700 | 2,700 | 6,000 | 37,600 | Maj | 4,750 | 2,750 | 6,050 | 38,100 | Corrik | 4,800 | 2,800 | 6,100 | 38,600 | Gjeshor | 4,850 | 2,850 | 6,150 | 39,100 | Korrik | 4,900 | 2,900 | 6,200 | 39,600 | Shator | 4,950 | 2,950 | 6,250 | 40,100 | Nentor | 5,000 | 3,000 | 6,300 | 40,600 | Janar | 5,050 | 3,050 | 6,350 | 41,100 | Mars | 5,100 | 3,100 | 6,400 | 41,600 | Maj | 5,150 | 3,150 | 6,450 | 42,100 | Corrik | 5,200 | 3,200 | 6,500 | 42,600 | Gjeshor | 5,250 | 3,250 | 6,550 | 43,100 | Korrik | 5,300 | 3,300 | 6,600 | 43,600 | Shator | 5,350 | 3,350 | 6,650 | 44,100 | Nentor | 5,400 | 3,400 | 6,700 | 44,600 | Janar | 5,450 | 3,450 | 6,750 | 45,100 | Mars | 5,500 | 3,500 | 6,800 | 45,600 | Maj | 5,550 | 3,550 | 6,850 | 46,100 | Corrik | 5,600 | 3,600 | 6,900 | 46,600 | Gjeshor | 5,650 | 3,650 | 6,950 | 47,100 | Korrik | 5,700 | 3,700 | 7,000 | 47,600 | Shator | 5,750 | 3,750 | 7,050 | 48,100 | Nentor | 5,800 | 3,800 | 7,100 | 48,600 | Janar | 5,850 | 3,850 | 7,150 | 49,100 | Mars | 5,900 | 3,900 | 7,200 | 49,600 | Maj | 5,950 | 3,950 | 7,250 | 50,100 | Corrik | 6,000 | 4,000 | 7,300 | 50,600 | Gjeshor | 6,050 | 4,050 | 7,350 | 51,100 | Korrik | 6,100 | 4,100 | 7,400 | 51,600 | Shator | 6,150 | 4,150 | 7,450 | 52,100 | Nentor | 6,200 | 4,200 | 7,500 | 52,600 | Janar | 6,250 | 4,250 | 7,550 | 53,100 | Mars | 6,300 | 4,300 | 7,600 | 53,600 | Maj | 6,350 | 4,350 | 7,650 | 54,100 | Corrik | 6,400 | 4,400 | 7,700 | 54,600 | Gjeshor | 6,450 | 4,450 | 7,750 | 55,100 | Korrik | 6,500 | 4,500 | 7,800 | 55,600 | Shator | 6,550 | 4,550 | 7,850 | 56,100 | Nentor | 6,600 | 4,600 | 7,900 | 56,600 | Janar | 6,650 | 4,650 | 7,950 | 57,100 | Mars | 6,700 | 4,700 | 8,000 | 57,600 | Maj | 6,750 | 4,750 | 8,050 | 58,100 | Corrik | 6,800 | 4,800 | 8,100 | 58,600 | Gjeshor | 6,850 | 4,850 | 8,150 | 59,100 | Korrik | 6,900 | 4,900 | 8,200 | 59,600 | Shator | 6,950 | 4,950 | 8,250 | 60,100 | Nentor | 7,000 | 5,000 | 8,300 | 60,600 | Janar | 7,050 | 5,050 | 8,350 | 61,100 | Mars | 7,100 | 5,100 | 8,400 | 61,600 | Maj | 7,150 | 5,150 | 8,450 | 62,100 | Corrik | 7,200 | 5,200 | 8,500 | 62,600 | Gjeshor | 7,250 | 5,250 | 8,550 | 63,100 | Korrik | 7,300 | 5,300 | 8,600 | 63,600 | Shator | 7,350 | 5,350 | 8,650 | 64,100 | Nentor | 7,400 | 5,400 | 8,700 | 64,600 | Janar | 7,450 | 5,450 | 8,750 | 65,100 | Mars | 7,500 | 5,500 | 8,800 | 65,600 | Maj | 7,550 | 5,550 | 8,850 | 66,100 | Corrik | 7,600 | 5,600 | 8,900 | 66,600 | Gjeshor | 7,650 | 5,650 | 8,950 | 67,100 | Korrik | 7,700 | 5,700 | 9,000 | 67,600 | Shator | 7,750 | 5,750 | 9,050 | 68,100 | Nentor | 7,800 | 5,800 | 9,100 | 68,600 | Janar | 7,850 | 5,850 | 9,150 | 69,100 | Mars | 7,900 | 5,900 | 9,200 | 69,600 | Maj | 7,950 | 5,950 | 9,250 | 70,100 | Corrik | 8,000 | 6,000 | 9,300 | 70,600 | Gjeshor | 8,050 | 6,050 | 9,350 | 71,100 | Korrik | 8,100 | 6,100 | 9,400 | 71,600 | Shator | 8,150 | 6,150 | 9,450 | 72,100 | Nentor | 8,200 | 6,200 | 9,500 | 72,600 | Janar | 8,250 | 6,250 | 9,550 | 73,100 | Mars | 8,300 | 6,300 | 9,600 | 73,600 | Maj | 8,350 | 6,350 | 9,650 | 74,100 | Corrik | 8,400 | 6,400 | 9,700 | 74,600 | Gjeshor | 8,450 | 6,450 | 9,750 | 75,100 | Korrik | 8,500 | 6,500 | 9,800 | 75,600 | Shator | 8,550 | 6,550 | 9,850 | 76,100 | Nentor | 8,600 | 6,600 | 9,900 | 76,600 | Janar | 8,650 | 6,650 | 9,950 | 77,100 | Mars | 8,700 | 6,700 | 10,000 | 77,600 | Maj | 8,750 | 6,750 | 10,050 | 78,100 | Corrik | 8,800 | 6,800 | 10,100 | 78,600 | Gjeshor | 8,850 | 6,850 | 10,150 | 79,100 | Korrik | 8,900 | 6,900 | 10,200 | 79,600 | Shator | 8,950 | 6,950 | 10,250 | 80,100 | Nentor | 9,000 | 7,000 | 10,300 | 80,600 | Janar | 9,050 | 7,050 | 10,350 | 81,100 | Mars | 9,100 | 7,100 | 10,400 | 81,600 | Maj | 9,150 | 7,150 | 10,450 | 82,100 | Corrik | 9,200 | 7,200 | 10,500 | 82,600 | Gjeshor | 9,250 | 7,250 | 10,550 | 83,100 | Korrik | 9,300 | 7,300 | 10,600 | 83,600 | Shator | 9,350 | 7,350 | 10,650 | 84,100 | Nentor | 9,400 | 7,400 | 10,700 | 84,600 | Janar | 9,450 | 7,450 | 10,750 | 85,100 | Mars | 9,500 | 7,500 | 10,800 | 85,600 | Maj | 9,550 | 7,550 | 10,850 | 86,100 | Corrik | 9,600 | 7,600 | 10,900 | 86,600 | Gjeshor | 9,650 | 7,650 | 10,950 | 87,100 | Korrik | 9,700 | 7,700 | 11,000 | 87,600 | Shator | 9,750 | 7,750 | 11,050 | 88,100 | Nentor | 9,800 | 7,800 | 11,100 | 88,600 | Janar | 9,850 | 7,850 | 11,150 | 89,100 | Mars | 9,900 | 7,900 | 11,200 | 89,600 | Maj | 9,950 | 7,950 | 11,250 | 90,100 | Corrik | 10,000 | 8,000 | 11,300 | 90,600 | Gjeshor | 10,050 | 8,050 | 11,350 | 91,100 | Korrik | 10,100 | 8,100 | 11,400 | 91,600 | Shator | 10,150 | 8,150 | 11,450 | 92,100 | Nentor | 10,200 | 8,200 | 11,500 | 92,600 | Janar | 10,250 | 8,250 | 11,550 | 93,100 | Mars | 10,300 | 8,300 | 11,600 | 93,600 | Maj | 10,350 | 8,350 | 11,650 | 94,100 | Corrik | 10,400 | 8,400 | 11,700 | 94,600 | Gjeshor | 10,450 | 8,450 | 11,750 | 95,100 | Korrik | 10,500 | 8,500 | 11,800 | 95,600 | Shator | 10,550 | 8,550 | 11,850 | 96,100 | Nentor | 10,600 | 8,600 | 11,900 | 96,600 | Janar | 10,650 | 8,650 | 11,950 | 97,100 | Mars | 10,700 | 8,700 | 12,000 | 97,600 | Maj | 10,750 | 8,750 | 12,050 | 98,100 | Corrik | 10,800 | 8,800 | 12,100 | 98,600 | Gjeshor | 10,850 | 8,850 | 12,150 | 99,100 | Korrik | 10,900 | 8,900 | 12,200 | 99,600 | Shator | 10,950 | 8,950 | 12,250 | 100,100 | Nentor | 11,000 | 9,000 | 12,300 | 100,600 | Janar | 11,050 | 9,050 | 12,350 | 101,100 | Mars | 11,100 | 9,100 | 12,400 | 101,600 | Maj | 11,150 | 9,150 | 12,450 | 102,100 | Corrik | 11,200 | 9,200 | 12,500 | 102,600 | Gjeshor | 11,250 | 9,250 | 12,550 | 103,100 | Korrik | 11,300 | 9,300 | 12,600 | 103,600 | Shator | 11,350 | 9,350 | 12,650 | 104,100 | Nentor | 11,400 | 9,400 | 12,700 | 104,600 | Janar | 11,450 | 9,450 | 12,750 | 105,100 | Mars | 11,500 | 9,500 | 12,800 | 105,600 | Maj | 11,550 | 9,550 | 12,850 | 106,100 | Corrik | 11,600 | 9,600 | 12,900 | 106,600 | Gjeshor | 11,650 | 9,650 | 12,950 | 107,100 | Korrik | 11,700 | 9,700 | 13,000 | 107,600 | Shator | 11,750 | 9,750 | 13,050 | 108,100 | Nentor | 11,800 | 9,800 | 13,100 | 108,600 | Janar | 11,850 | 9,850 | 13,150 | 109,100 | Mars | 11,900 | 9,900 | 13,200 | 109,600 | Maj | 11,950 | 9,950 | 13,250 | 110,100 | Corrik | 12,000 | 10,000 | 13,300 | 110,600 | Gjeshor | 12,050 | 10,050 | 13,350 | 111,100 | Korrik | 12,100 | 10,100 | 13,400 | 111,600 | Shator | 12,150 | 10,150 | 13,450 | 112,100 | Nentor | 12,200 | 10,200 | 13,500 | 112,600 | Janar | 12,250 | 10,250 | 13,550 | 113,100 | Mars | 12,300 | 10,300 | 13,600 | 113,600 | Maj | 12,350 | 10,350 | 13,650 | 114,100 | Corrik | 12,400 | 10,400 | 13,700 | 114,600 | Gjeshor | 12,450 | 10,450 | 13,750 | 115,100 | Korrik | 12,500 | 10,500 | 13,800 | 115,600 | Shator | 12,550 | 10,550 | 13,850 | 116,100 | Nentor | 12,600 | 10,600 | 13,900 | 116,600 | Janar | 12,650 | 10,650 | 13,950 | 117,100 | Mars | 12,700 | 10,700 | 14,000 | 117,600 | Maj | 12,750 | 10,750 | 14,050 | 118,100 | Corrik | 12,800 | 10,800 | 14,100 | 118,600 | Gjeshor | 12,850 | 10,850 | 14,150 | 119,100 | Korrik | 12,900 | 10,900 | 14,200 | 119,600 | Shator | 12,950 | 10,950 | 14,250 | 120,100 | Nentor | 13,000 | 11,000 | 14,300 | 120,600 | Janar | 13,050 | 11,050 | 14,350 | 121,100 | Mars | 13,100 | 11,100 | 14,400 | 121,600 | Maj | 13,150 | 11,150 | 14,450 | 122,100 | Corrik | 13,200 | 11,200 | 14,500 | 122,600 | Gjeshor | 13,250 | 11,250 | 14,550 | 123,100 | Korrik | 13,300 | 11,300 | 14,600 | 123,600 | Shator | 13,350 | 11,350 | 14,650 | 124,100 | Nentor | 13,400 | 11,400 | 14,700 | 124,600 | Janar | 13,450 | 11,450 | 14,750 | 125,100 | Mars | 13,500 | 11,500 | 14,800 | 125,600 | Maj | 13,550 | 11,550 | 14,850 | 126,100 | Corrik | 13,600 | 11,600 | 14,900 | 126,600 | Gjeshor | 13,650 | 11,650 | 14,950 | 127,100 | Korrik | 13,700 | 11,700 | 15,000 | 127,600 | Shator | 13,750 | 11,750 | 15,050 | 128,100 | Nentor | 13,800 | 11,800 | 15,100 | 128,600 | Janar | 13,850 | 11,850 | 15,150 | 129,100 | Mars | 13,900 | 11,900 | 15,200 | 129,600 | Maj | 13,950 | 11,950 | 15,250 | 130,100 | Corrik | 14,000 | 12,000 | 15,300 | 130,600 | Gjeshor | 14,050 | 12,050 | 15,350 | 131,100 | Korrik | 14,100 | 1 |

Energji Totale ne Operatorin e Sistemit te Shperndarjes 2009-2021 ne MWh

| | Janar | Shkurt | Mars | Prill | Maj | Qershor | Korrik | Gusht | Shtator | Tetor | Nentor | Dhjetor | VITI |
|------|---------|---------|---------|---------|---------|---------|---------|---------|---------|---------|---------|---------|-----------|
| 2009 | 644,987 | 568,719 | 589,279 | 462,709 | 448,118 | 427,694 | 467,863 | 493,772 | 439,604 | 489,635 | 557,554 | 639,797 | 6,229,731 |
| 2010 | 675,343 | 608,940 | 610,583 | 506,275 | 476,500 | 464,120 | 499,241 | 512,024 | 460,893 | 509,793 | 532,126 | 660,665 | 6,516,503 |
| 2011 | 708,264 | 623,208 | 634,087 | 536,286 | 533,564 | 495,139 | 545,315 | 567,282 | 512,979 | 551,132 | 619,655 | 710,870 | 7,037,781 |
| 2012 | 733,973 | 680,054 | 596,982 | 537,950 | 483,891 | 489,723 | 536,891 | 540,566 | 469,527 | 484,706 | 548,289 | 749,398 | 6,851,949 |
| 2013 | 743,846 | 665,392 | 673,578 | 545,600 | 502,945 | 511,390 | 546,696 | 565,789 | 493,056 | 532,555 | 589,808 | 774,403 | 7,145,060 |
| 2014 | 733,468 | 631,678 | 645,837 | 578,948 | 541,016 | 501,088 | 530,554 | 556,098 | 492,427 | 537,280 | 546,419 | 640,431 | 6,935,244 |
| 2015 | 686,041 | 591,978 | 594,775 | 514,282 | 472,405 | 465,730 | 536,160 | 529,208 | 459,012 | 476,969 | 519,281 | 649,026 | 6,494,867 |
| 2016 | 671,884 | 559,772 | 573,419 | 469,803 | 477,468 | 463,248 | 509,916 | 514,034 | 451,153 | 480,236 | 540,024 | 688,760 | 6,399,717 |
| 2017 | 715,886 | 562,270 | 545,214 | 493,731 | 475,055 | 485,386 | 529,805 | 543,145 | 451,103 | 482,629 | 546,256 | 667,841 | 6,498,322 |
| 2018 | 659,778 | 590,823 | 597,595 | 468,417 | 467,468 | 468,885 | 508,892 | 539,134 | 465,468 | 471,407 | 517,882 | 681,162 | 6,436,911 |
| 2019 | 735,813 | 586,992 | 559,331 | 500,485 | 501,061 | 500,729 | 533,842 | 565,788 | 471,684 | 472,833 | 507,920 | 639,953 | 6,576,432 |
| 2020 | 708,611 | 607,803 | 589,581 | 489,236 | 464,183 | 463,789 | 527,801 | 533,336 | 482,358 | 506,280 | 562,127 | 669,977 | 6,605,082 |
| 2021 | 724,554 | 629,962 | 662,183 | 590,810 | 504,970 | 519,563 | 591,485 | 603,872 | 485,288 | 523,606 | 552,840 | 747,790 | 7,136,936 |
| 2022 | 774,084 | 656,456 | 698,991 | 556,275 | 504,224 | 525,509 | | | | | | | 3,715,539 |

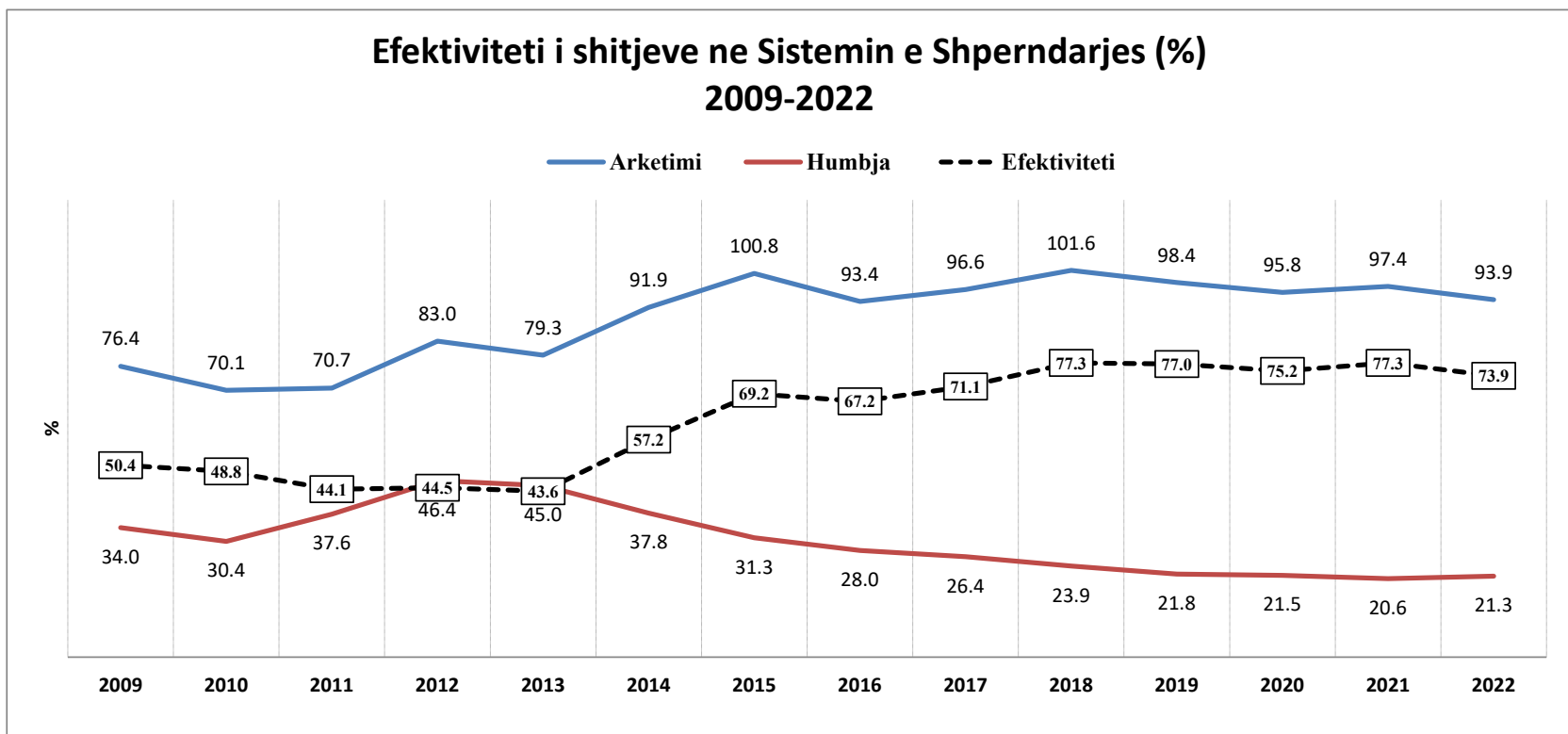
| | Janar | Shkurt | Mars | Prill | Maj | Qershor | Korrik | Gusht | Shtator | Tetor | Nentor | Dhjetor |
|-----------|---------|---------|---------|---------|---------|---------|---------|---------|---------|---------|---------|---------|
| Mesatarja | 703,265 | 608,276 | 605,573 | 514,964 | 488,357 | 481,268 | 528,036 | 543,388 | 471,889 | 501,466 | 549,245 | 686,159 |
| 2022 | 774,084 | 656,456 | 698,991 | 556,275 | 504,224 | 525,509 | | | | | | |
| Diferenca | 70,819 | 48,180 | 93,418 | 41,311 | 15,867 | 44,241 | | | | | | |

MESATARJA 13 VJEÇARE E ENERGJISË TOTALE NË RRJETIN E SHPËRNDARJES SIPAS MUAJVE TË VITIT (MWh)



Burimi OSHEE sha

| | 2009 | 2010 | 2011 | 2012 | 2013 | 2014 | 2015 | 2016 | 2017 | 2018 | 2019 | 2020 | 2021 | 2022 |
|--------------|------|------|------|------|------|------|-------|------|------|-------|------|------|------|------|
| Arketimi | 76.4 | 70.1 | 70.7 | 83.0 | 79.3 | 91.9 | 100.8 | 93.4 | 96.6 | 101.6 | 98.4 | 95.8 | 97.4 | 93.9 |
| Humbja | 34.0 | 30.4 | 37.6 | 46.4 | 45.0 | 37.8 | 31.3 | 28.0 | 26.4 | 23.9 | 21.8 | 21.5 | 20.6 | 21.3 |
| Efektiviteti | 50.4 | 48.8 | 44.1 | 44.5 | 43.6 | 57.2 | 69.2 | 67.2 | 71.1 | 77.3 | 77.0 | 75.2 | 77.3 | 73.9 |



Burimi FSHU (OSHEE Group sha)

| NR | KLIENTET NE TL | KLIENTET E "KUALIFIKUAR" PER VITIN 2022 | | | | | | |
|----|-----------------------------------|---|--------|--------|--------|--------|---------|-----------|
| | | Energjia e faturuar ne [MWh] | | | | | | |
| | | Janar | Shkurt | Mars | Prill | Maj | Qershor | 6-Muj2022 |
| 1 | N/ST i GSA EL i ri 110kV-T1/694 | 0 | 0 | 0 | 0 | | | 0 |
| 2 | N/ST i GSA EL 110kV-T2/960 | 17,703 | 15,919 | 16,128 | 16,518 | 17,232 | 16,340 | 99,839 |
| 3 | TEC Ballsh | 71 | 61 | 66 | 15 | - | - | 213 |
| 4 | Titan T1,T2 | 7,960 | 9,448 | 10,809 | 10,544 | 10,498 | 9,036 | 58,294 |
| 5 | FERROKROM | 7,247 | 6,545 | 7,349 | 6,912 | 12,480 | 11,405 | 51,937 |
| 6 | FUSHE KRUJE 220kV-T2/058 | - | - | - | 4,264 | 7,057 | 3,983 | 15,304 |
| 7 | N/ST 220/6,3Colacent-T1 I RI/336 | 426 | 1,353 | 782 | 1,481 | 888 | 1,330 | 6,260 |
| 8 | EL220-L220KURUM/338 | 1,769 | 21,948 | 32,655 | 32,693 | 22,752 | 23,686 | 135,503 |
| 9 | Lajthiza T1/742 | 328 | 472 | 184 | 13 | 162 | 388 | 1,547 |
| 10 | F.Arrez-T3/653 | 0 | 0 | 0 | 0 | 0 | 0 | 0 |
| 11 | N/ST i AES EL 110kV-T1/690 | 7,188 | 5,203 | 2,147 | 7,076 | 7,232 | 7,011 | 35,858 |
| 12 | N/ST I AES EL 110kV-T2/692 | 233 | 1,413 | 5,072 | 7,054 | 7,473 | 7,288 | 28,532 |
| 13 | N/ST I CWI Albania T1/158 | - | - | - | 0 | 510 | 511 | 1,021 |
| 14 | ENERGJI ASHTA (ASHTA 1+2) | 0.09 | - | - | 0.01 | 0.00 | 1.00 | 1 |
| 15 | ENERGJI ULEZ (ULEZ) | 0.13 | 16 | 10 | 3.07 | 0.17 | 17.00 | 47 |
| 16 | ENERGJI SHKOPET (SHKOPET) | 0 | 0 | 0 | 0 | 0 | 0 | 0 |
| 17 | ENERGJI BISTRICE (BISTRICE) | 0 | 0 | 0 | 0 | 0 | 0 | 0 |
| 18 | ENERGJI PESHQESH (AYEN) | 9 | 7 | 29 | 0.57 | 17.00 | 30.00 | 93 |
| 19 | ENERGJI FANG (AYEN) | 32 | 24 | 39 | 16 | 25 | 25 | 161 |
| 20 | ENERGJI BANJA (DEVOLL HPP) | 14 | 17 | 19 | 16 | 17 | 23 | 106 |
| 21 | ENERGJI HEC MOGLICE (DEVOLL HPP) | 3 | 2 | 3 | 1 | 1 | 4 | 14 |
| | Totali mujor | 42,982 | 62,427 | 75,293 | 86,605 | 86,344 | 81,078 | 434,730 |

Burimi: OST sha

Devijimet ne Programin e Interkoneksionit 2022 (MWh)

Minus = Hyrje

Plus = Dalje

| Data | Janar | Shkurt | Mars | Prill | Maj | Qershor | Korrik | Gusht | Shtator | Tetor | Nentor | Dhjetor | 2022 |
|--------------|---------------|--------------|------------|--------------|--------------|--------------|--------|-------|---------|-------|--------|---------|---------------|
| 1 | -222 | -135 | -85 | 440 | 256 | 141 | | | | | | | 395 |
| 2 | 3 | -27 | 461 | 238 | 322 | -5 | | | | | | | 991 |
| 3 | 136 | 217 | -338 | -258 | -26 | 356 | | | | | | | 87 |
| 4 | -577 | 161 | -62 | -1851 | -143 | 333 | | | | | | | -2,140 |
| 5 | -131 | -9 | -561 | -19 | -274 | 161 | | | | | | | -834 |
| 6 | 137 | 327 | -1124 | -116 | 33 | -139 | | | | | | | -882 |
| 7 | -157 | 693 | -573 | 276 | 178 | -143 | | | | | | | 274 |
| 8 | -126 | 933 | -277 | 254 | 458 | -45 | | | | | | | 1,197 |
| 9 | 4 | -577 | -294 | 585 | 429 | 562 | | | | | | | 709 |
| 10 | -425 | -70 | -157 | 237 | 3 | 64 | | | | | | | -349 |
| 11 | -61 | 272 | -90 | -266 | -65 | 507 | | | | | | | 297 |
| 12 | -343 | 564 | -136 | -109 | -152 | -43 | | | | | | | -219 |
| 13 | -52 | 180 | -232 | -92 | 209 | -9 | | | | | | | 4 |
| 14 | -429 | 297 | 346 | 223 | 401 | 105 | | | | | | | 943 |
| 15 | 332 | 64 | 413 | 449 | 313 | 235 | | | | | | | 1,806 |
| 16 | -3 | -148 | 41 | 348 | -347 | 85 | | | | | | | -24 |
| 17 | -64 | 638 | -6 | 363 | 16 | 124 | | | | | | | 1,072 |
| 18 | 133 | 447 | -29 | -226 | 195 | 633 | | | | | | | 1,152 |
| 19 | -167 | 288 | 252 | -94 | 102 | 476 | | | | | | | 857 |
| 20 | -192 | 585 | 237 | -448 | -17 | 268 | | | | | | | 433 |
| 21 | 174 | 1695 | -73 | -69 | -323 | -8 | | | | | | | 1,397 |
| 22 | -102 | 862 | -181 | 738 | -95 | -28 | | | | | | | 1,194 |
| 23 | 1014 | 338 | 311 | 278 | -65 | -26 | | | | | | | 1,852 |
| 24 | -587 | 167 | 587 | 945 | -272 | -20 | | | | | | | 820 |
| 25 | -836 | 21 | 575 | 237 | 85 | 262 | | | | | | | 345 |
| 26 | -418 | -124 | 202 | 64 | 85 | 235 | | | | | | | 44 |
| 27 | -22 | -686 | 583 | -308 | 102 | -55 | | | | | | | -387 |
| 28 | 28 | 229 | -97 | 254 | 409 | -195 | | | | | | | 628 |
| 29 | 303 | | 309 | 235 | 1105 | -153 | | | | | | | 1,799 |
| 30 | 220 | | -103 | 323 | -91 | -6 | | | | | | | 343 |
| 31 | 51 | | 430 | | -18 | | | | | | | | 463 |
| Total | -2,381 | 7,203 | 328 | 2,630 | 2,812 | 3,674 | | | | | | | 14,267 |

Burimi OST sha

Tabela me te dhenat e Alokimit te ATC 2022

| Ankandi | Periudha | Shqiperi - Mali Zi | | | | | | Shqiperi - Greqi | | | | | | Shqiperi - Kosove | | | | | | | |
|---------|-----------------------|------------------------|--------|------------------------|--------|----------------|--------------|------------------------|--------|------------------------|--------|----------------|--------------|------------------------|--------|------------------------|--------|----------------|--------------|--------------|--------------|
| | | ATC e ofruar ne Ankand | | ATC e shitur ne Ankand | | Cmimi Ankandit | | ATC e ofruar ne Ankand | | ATC e shitur ne Ankand | | Cmimi Ankandit | | ATC e ofruar ne Ankand | | ATC e shitur ne Ankand | | Cmimi Ankandit | | | |
| | | Export | Import | Export | Import | Export | Import | Export | Import | Export | Import | Export | Import | Export | Import | Export | Import | Export | Import | Export | Import |
| | | [MW] | [MW] | [MW] | [MW] | [Euro/MWh] | [Euro/MWh] | [MW] | [MW] | [MW] | [MW] | [Euro/MWh] | [Euro/MWh] | [MW] | [MW] | [MW] | [MW] | [Euro/MWh] | [Euro/MWh] | [Euro/MWh] | [Euro/MWh] |
| Janar | 01.01.2022-31.01.2022 | 101 | 100 | 101 | 100 | 2.07 | 1.47 | 200 | 202 | 200 | 202 | 1.11 | 3.47 | 200 | 200 | 200 | 200 | 0.83 | 0.41 | | |
| Shkurt | 01.02.2022-28.02.2022 | 103 | 102 | 102 | 105 | 1.55 | 2.22 | 200 | 154 | 200 | 154 | 1.5 | 3.51 | 202 | 200 | 202 | 199 | 1.53 | 0.65 | | |
| Mars | 01.03.2022-31.03.2022 | 103 | 102 | 103 | 102 | 0.91 | 3.98 | 100 | 102 | 100 | 102 | 2.55 | 1.51 | 200 | 200 | 200 | 200 | 0.31 | 1.11 | | |
| | 102 | | | | | | | 107 | 102 | 107 | 0.84 | 0.79 | | | | | | | | | |
| | 2 | | | | | | | 4 | 0 | 2 | 0.84 | 0.79 | | | | | | | | | |
| Prill | 01.04.2022-03.04.2022 | 101 | 100 | 101 | 100 | 2.25 | 3.33 | 100 | 5 | 99 | 5 | 2.71 | 9.69 | 200 | 200 | 200 | 200 | 0.71 | 1.11 | | |
| | 04.04.2022-05.04.2022 | | | | | | | | | | | | | 50 | 50 | 49 | 48 | 0.71 | 1.11 | | |
| | 06.04.2022-15.04.2022 | | | | | | | | | | | | | 200 | 200 | 200 | 200 | 0.71 | 1.11 | | |
| | 16.04.2022-30.04.2022 | | | | | | | | | | | | | | | | | | | 200 | 200 |
| Maj | 01.05.2022-02.05.2022 | 101 | 100 | 101 | 100 | 1.29 | 3.55 | 200 | 0 | 193 | 0 | 4.00 | 0 | 200 | 200 | 200 | 200 | 0.26 | 0.95 | | |
| | 03.05.2022-06.05.2022 | | | | | | | 0 | | 0 | | 4.00 | | | | | | | | | |
| | 07.05.2022-12.05.2022 | | | | | | | 200 | | 193 | | 4.00 | | | | | | | | | |
| | 13.05.2022-24.05.2022 | | | | | | | 300 | | 300 | | 4.00 | | | | | | | | | |
| | 25.05.2022-31.05.2022 | | | | | | | 200 | | 193 | | 4.00 | | | | | | | | | |
| Qershor | 01.06.2022-30.06.2022 | 101 | 100 | 101 | 100 | 0.89 | 3.69 | 200 | 5 | 200 | 5 | 4.20 | 3.99 | 202 | 200 | 202 | 200 | 0.61 | 1.35 | | |

DISBALLANCAT (6-MUJORI 2022)

| Pale Pergjegjese Balancuese | JANAR | | SHKURT | | MARS | | PRILL | | MAJ | | QERSHOR | | KORRIK | | - | |
|--|----------------------|------------------------|----------------------|------------------------|----------------------|------------------------|----------------------|------------------------|----------------------|------------------------|----------------------|------------------------|----------------------|------------------------|----------------------|------------------------|
| | Dis. Negative [MWh] | Dis. Pozitive [MWh] | Dis. Negative [MWh] | Dis. Pozitive [MWh] | Dis. Negative [MWh] | Dis. Pozitive [MWh] | Dis. Negative [MWh] | Dis. Pozitive [MWh] | Dis. Negative [MWh] | Dis. Pozitive [MWh] | Dis. Negative [MWh] | Dis. Pozitive [MWh] | Dis. Negative [MWh] | Dis. Pozitive [MWh] | Dis. Negative [MWh] | Dis. Pozitive [MWh] |
| KURUM INTERNATIONAL | 298 | 33 | 863 | 645 | 1,142 | 351 | 1,203 | 549 | 965 | 174 | 796 | 529 | | | 5,267 | 2,281 |
| DEVOLL HP | 34 | 561 | 164 | 67 | 120 | 75 | 23 | 65 | 439 | 54 | 18 | 29 | | | 797 | 851 |
| GEN-I | 762 | 404 | 629 | 550 | 759 | 168 | 866 | 148 | 778 | 150 | 560 | 292 | | | 4,354 | 1,713 |
| ENERGIA GAS & POWER ALBANIA | 654 | 178 | 327 | 37 | 317 | 59 | 348 | 64 | 580 | 29 | 793 | 0 | | | 3,019 | 366 |
| ENER TRADE | | | | | | | | | 289 | 830 | 157 | 1,380 | | | | |
| AYEN AS ENERGI | 284 | 107 | 30 | 73 | 64 | 49 | 117 | 104 | 69 | 38 | 57 | 16 | | | 622 | 388 |
| GSA | 2,749 | 28 | 1,925 | 131 | 4,701 | 370 | 1,418 | 521 | 1,344 | 598 | 3,689 | 200 | | | 15,826 | 1,847 |
| Albanian Energy Supplier AES | 1,355 | 79 | | | | | | | | | | | 16 | | 1,372 | 79 |
| Furnizuesi i Tregut të Lirë FTL (OSHEE Grup) | 3,460 | 22,693 | 4,420 | 26,210 | 3,732 | 25,481 | 4,192 | 27,211 | 3,971 | 14,722 | 3,851 | 10,428 | 10,428 | | 34,054 | 126,745 |
| KESH (Pale Pergjegjese Balancuese) | 308 | 2,462 | 759 | 4,118 | 512 | 2,936 | 344 | 5,500 | 374 | 2,523 | 421 | 1,878 | 1,878 | | 4,598 | 19,418 |
| EZ-5 ENERGY | 129 | 8 | 24 | 18 | 20 | 5 | | | | | | | | | 173 | 31 |
| BYLLIS Tec Ballsh (Pa kontrate Furnizimi) | 71 | | 61 | | 66 | | 15 | 0 | | | | | | | 213 | 0 |
| KOSTT | 2,703 | 12,584 | 2,683 | 10,333 | 1,137 | 14,239 | 4,576 | 8,666 | 6,960 | 5,197 | 9,615 | 2,280 | | | 27,674 | 53,298 |
| OST - HUMBJET | 5,028 | 1,506 | 1,278 | 2,229 | 1,619 | 2,889 | 14,685 | 2 | 8,262 | 49 | 6,931 | 12 | | | 37,802 | 6,687 |
| Ofruesi i Sherbimit te Balancimit | Ulje Gjenerimi [MWh] | Rritje Gjenerimi [MWh] | Ulje Gjenerimi [MWh] | Rritje Gjenerimi [MWh] | Ulje Gjenerimi [MWh] | Rritje Gjenerimi [MWh] | Ulje Gjenerimi [MWh] | Rritje Gjenerimi [MWh] | Ulje Gjenerimi [MWh] | Rritje Gjenerimi [MWh] | Ulje Gjenerimi [MWh] | Rritje Gjenerimi [MWh] | Ulje Gjenerimi [MWh] | Rritje Gjenerimi [MWh] | Ulje Gjenerimi [MWh] | Rritje Gjenerimi [MWh] |
| Devoll HP Energjia Akt | | 117 | | | | | | 18 | 13 | 53 | | | | | 13 | 188 |
| Devoll HP Energjia Shtese Akt | | | | | | | | | | | | | | | 0 | 0 |
| Ayen AS Energji Energjia Akt | | | | | | | | | | | | | | | 0 | 0 |
| Ayen AS Energji Energjia Shtese Akt | | | | | | | | | | | | | | | 0 | 0 |
| KESH sh.a. Energjia Akt | 6,925 | 4,233 | 8,165 | 3,878 | 8,206 | 4,472 | 6,127 | 4,668 | 6,162 | 5,290 | 5,491 | 4,488 | | | 41,077 | 27,029 |
| KESH sh.a. Energjia Shtese Akt | 2,431 | 175 | 4,569 | | 1,740 | 0 | 2,289 | 141 | 1,924 | | 1,448 | 44 | | | 14,401 | 360 |
| TOTALI | 27,120 | 45,168 | 25,837 | 48,288 | 24,070 | 51,093 | 36,189 | 47,658 | 32,129 | 29,707 | 33,827 | 21,576 | 12,323 | 0 | 191,049 | 241,281 |
| Disbalancat mujore [MWh] | | 18,048 | | 22,452 | | 27,022 | | 11,469 | | -2,422 | | -12,251 | | -12,323 | | 50,232 |

| Regjistri Pjesmarresve te Tregut (viti 2022) 6-mujori | | PRODHUES | | P |
|---|---|---------------------------------|---------------------|-------------|
| | | TREGTUES | | T |
| | | FURNIZUES | | F |
| | | FURNIZUES I SHERBIMIT UNIVERSAL | | FSHU |
| | | SHPERNDARJE | | SH |
| Nr | Emri i Subjektit | EIC Code | data e regjistrimit | Roli ne TEE |
| 1 | Albanian Energy Supplier | 54X-AEG-02-1603G | 26.05.2015 | T; F |
| 2 | AXPO Albania | 23X--150330-AA-K | 28.1.2020 | T; F |
| 3 | Ayen AS Energji | 23X--150416-A--N | 17.12.2014 | P; T; F |
| 4 | Ayen Energy Trading | 23X--140426-AY-W | 04.05.2014 | T; F |
| 6 | Devoll Hydropower | 23X--150409-DHP5 | 11.06.2015 | T; F |
| 8 | Energji Ashta | 54X-HECASHTA-059 | 25.05.2012 | P |
| 9 | Energy Supply-AL | 54X-ES-AL----12Y | 25.02.2022 | T; F |
| 11 | GEN-I Tirana | 23X---120709GEN0 | 31.01.2011 | T; F |
| 13 | Green Energy Trading Albania | 23X--150702GE--3 | 01.07.2015 | T |
| 14 | Grupi Sistemeve Automatike | 22XGSA-----N | 09.05.2011 | T; F |
| 15 | Korporata Elektroenergjitike Shqiptare | 23X--130918APC-M | 25.04.2011 | P; T |
| 16 | KURUM International | 23X--131115KI--1 | 17.12.2013 | P; T; F |
| 17 | NOA Energy Trade | 23X--150630-NE-6 | 10.03.2015 | T; F |
| 18 | Operatori i Sistemit të Shpërndarjes - OSSH sh.a. | 54X-10101FT022OP | 19.02.2020 | SH |
| 19 | Stravaj Energy | 54X-STRAVAJ-E086 | 25.04.2014 | P; T |
| 20 | WENERG | 54X-WENERG---10E | 10.06.2015 | P |
| 24 | Energy Financing Team Tirana | 54X-EFT-TIRANA-V | 24.08.2017 | T; F |
| 25 | Alpiq Energy Albania | 23X--141204AEA-T | 29.04.2011 | T; F |
| 26 | URADRIN | 54X-100ID101218J | 10.08.2018 | F |
| 27 | Energia Gas and Power Albania shpk | 23x-150309-LT-Y | 22.10.2018 | T; F |
| 28 | RENRGY Trading Group | 54X-10IRN102618R | 12.11.2018 | T,F |
| 29 | Ener Trade shpk | 54X-10 IET091118 | 21.12.2018 | T; F |
| 30 | Power and Gas Operations | 54X-10IPG2307196 | 23.07.2019 | T |
| 31 | ENSCO Trading (Albania) sh.p.k | 54X-110IESA1019G | 02.12.2019 | T |
| 32 | KESH sh.a | 23X--130918APC-M | 16.12.2019 | F |
| 33 | Furnizuesi i Tregut të Lirë - FTL sh.a. | 54X-1010IFT022OP | 19.02.2020 | T; F |
| 34 | Furnizuesi i Shërbimit Universal - FSHU sh.a. | 54X-0101IFSH022Q | 19.02.2020 | F |
| 35 | EZ-5 Energy shpk | 54X-11LKE250319U | 25.03.2019 | T;F |
| 35 | Hec Arsti shpk | 54X--101H11A-IJ | 27.03.2021 | P |
| 36 | Hec Lajthiza Invest | 54X-L-1011LTF-1S | 15.03.2022 | P |
| 37 | Danske commodities Albania | 23X--121120DCALG | 30.10.2012 | T |
| 38 | Lëngarica & Energy shpk | 54X-L-1010H-LENU | 09.07.2021 | P |
| 39 | INFO-TELECOM | 54X-I-1100-INFTI | 06.08.2021 | T |
| 40 | TIRANA INTERNATIONAL DEVELOPMEN | 54X-I-0101-TID-F | 06.08.2021 | T |
| 41 | TEODORI 2003 | 54X-L-110-TE-ALU | 13.08.2021 | P |
| 42 | DITEKO sh.p.k | 54X-L-10101DIT-Y | 13.09.2021 | T |
| 43 | S.P.E. GJADER sh.p.k | 54X-L-1010-GJADJ | 18.10.2021 | P |
| 44 | AlbESP Trading & Consulting sh.p.k | 54X-I-10101AESPF | 17.12.2021 | F;T |
| 45 | HEC Tervoli sh.p.k | 54X-I-210101HTEI | 23.12.2021 | P |
| 46 | HEC BISHNICA 1.2 sh.p.k | 54X-I-10011HB12W | 23.12.2021 | P |
| 47 | ENERGAL sh.p.k | 54X-I-1111EN-ALF | 31.12.2021 | P;T |
| 48 | EURON ENERGY sh.p.k | 54X-I-0111EU-ENB | 31.12.2021 | T;P |
| 49 | Hydro-Seta sh.p.k | 54X-I-1111HS-015 | 31.12.2021 | P;T |
| 50 | Alb-Energy sh.p.k | 54X-I-0101A1-EN3 | 11.05.2022 | T |
| 51 | Dragobia Energy sh.p.k. | 54X-I_111DRG-01W | 12.07.2022 | P; T; F |
| | Future EnergyTrading and Exchange Dynamics shpk | 54X-I-101FETED-J | 27.06.2022 | F,T |
| | Ada Solar SE shpk | 54X-I-01001ADS-6 | 26.04.2022 | T |

Burimi: OST sha

Transaksionet e energjise elektrike te Pjesemarrjeve te Tregut ne [MWh] per 2022

| Nr. | Subjekti | Lloji transaksionit | Janar | Shkurt | Mars | Prill | Maj | Qershor | Korrik | Gusht | Shtator | Tetor | Nentor | Dhjetor | Total [MWh] | | | | |
|--------------------------------|---------------------|---------------------------------------|-------------------------------------|-------------------------------|------------------------|----------------|----------------|----------------|----------------|------------|------------|------------|------------|------------|---------------|----------------|----------------|-----------------|----------|
| 1 | DEVOLLII HP | AL-GR Greece - IN | -2,566 | -990 | -10,159 | -4,990 | -3,452 | -1,010 | | | | | | | | -32,957 | | | |
| | | AL-KS Kosovo - IN | -1,427 | -2,373 | -168 | -1,114 | -1,110 | -1,003 | | | | | | | | -7,203 | | | |
| | | AL-ME Monte Negro - IN | -9,495 | -11,229 | -2,697 | -5,288 | -6,821 | -3,562 | | | | | | | | -39,992 | | | |
| | | Total IN | -13,288 | -14,584 | -13,024 | -11,394 | -11,383 | -15,577 | 0 | 0 | 0 | 0 | 0 | 0 | 0 | -79,250 | | | |
| | | AL-GR Greece - OUT | 31,280 | 40,317 | 19,024 | 26,516 | 30,383 | 6,447 | | | | | | | | | 153,967 | | |
| | | AL-KS Kosovo - OUT | 5,283 | 1,262 | 5,751 | 4,711 | 1,959 | 424 | | | | | | | | | 19,390 | | |
| | | AL-ME Monte Negro - OUT | 30,992 | 32,477 | 45,965 | 37,700 | 36,066 | 22,823 | | | | | | | | | 228,092 | | |
| | | Total OUT | 67,555 | 74,056 | 79,740 | 68,987 | 70,408 | 29,703 | 0 | 0 | 0 | 0 | 0 | 0 | 0 | 0 | 401,449 | | |
| | | Total | 54,267 | 59,472 | 66,716 | 57,593 | 59,025 | 14,126 | 0 | 0 | 0 | 0 | 0 | 0 | 0 | 0 | 322,199 | | |
| | | Transaksi onet e brendsht me | Prodhimi | Prodhim Devoll HP | 85,560 | 61,642 | 57,716 | 57,353 | 59,201 | 14,126 | | | | | | | | 335,598 | |
| | | | Shihte FTL | | | | | | | | | | | | | | | 0 | |
| | | | Shihte GEN4 | | | | | | | | | | | | | | | 0 | |
| | | | Blerje GEA | | | | | | | | | | | | | | | 0 | |
| | | | Blerje ENERTRADE | -1 | | | | | | | | | | | | | | -1 | |
| | | | Blerje ReNRGY | -1 | | | | | | | | | | | | | | -1 | |
| | | | Shihte GEN4 Tirana | | | | | 176 | | | | | | | | | | 176 | |
| Shihte KESH | | | | | | | | | | | | | | | | 0 | | | |
| Blerje GEN4 Tirana | | | | | | | -240 | | | | | | | | | -240 | | | |
| Shihte OST | 11,295 | | 2,170 | | | | | | | | | | | | | 13,465 | | | |
| Total transaksione | 11,293 | 2,170 | 0 | -240 | 176 | 0 | 0 | 0 | 0 | 0 | 0 | 0 | 0 | 0 | 13,399 | | | | |
| 2 | AYEN Energy Trading | AL-GR Greece - IN | -46 | -924 | -3,218 | 0 | 0 | -2,614 | | | | | | | | -6,884 | | | |
| | | AL-KS Kosovo - IN | 0 | -1,098 | -37 | -1,853 | -4,253 | -1,068 | | | | | | | | -8,309 | | | |
| | | AL-ME Monte Negro - IN | -2 | -1,435 | -4,010 | -2,584 | -2,438 | -733 | | | | | | | | -11,202 | | | |
| | | Total IN | -48 | -3,457 | -7,265 | -4,437 | -6,691 | -4,437 | 0 | 0 | 0 | 0 | 0 | 0 | 0 | 0 | -28,155 | | |
| | | AL-GR Greece - OUT | 0 | 0 | 0 | 6,646 | 655 | 501 | | | | | | | | | 7,802 | | |
| | | AL-KS Kosovo - OUT | 0 | 0 | 35 | 0 | 270 | 149 | | | | | | | | | 454 | | |
| | | AL-ME Monte Negro - OUT | 0 | 16 | 1,256 | 0 | 239 | 0 | | | | | | | | | 1,511 | | |
| | | Total OUT | 0 | 16 | 1,291 | 6,646 | 1,164 | 1,650 | 0 | 0 | 0 | 0 | 0 | 0 | 0 | 0 | 18,767 | | |
| | | Total | -48 | -3,441 | -5,974 | -2,209 | -5,527 | -2,787 | 0 | 0 | 0 | 0 | 0 | 0 | 0 | 0 | -9,388 | | |
| | | Transaksi onet e brendsht me | Prodhimi | Blerje AES | | | | | | | | | | | | | | 0 | |
| | | | Blerje Danske Commodities | | | | | | | | | | | | | | | 0 | |
| | | | Shihte ENER TRADE | 18,600 | | 1,957 | | 20 | 623 | | | | | | | | | 21,200 | |
| | | | Shihte GEN4 | 9,048 | | 367 | | | | | | | | | | | | 9,415 | |
| | | | Blerje GEN4 | | | | | | | | | | | | | | | 0 | |
| | | | Shihte GETA | 10,158 | | 1,199 | | 29,412 | 9,074 | | | | | | | | | 65,466 | |
| | | | Shihte EFT TRN | 5,176 | | 146 | | 0 | 19 | | | | | | | | | 5,360 | |
| Blerje AVEN AS Energji | -27,600 | | -18,976 | -6,975 | -10,535 | -2,412 | -1,040 | | | | | | | | | -67,538 | | | |
| Shihte AVEN AS Energji | | | | | | | | | | | | | | | | 0 | | | |
| Shihte GRID Energy | | | | | | | | | | | | | | | | 0 | | | |
| Blerje KESH | | | | 150 | | | | | | | | | | | 150 | | | | |
| Blerje KESH | | | | | 1,968 | 555 | 254 | | | | | | | | 2,777 | | | | |
| Shihte AVEN AS Energji | | | | | | | | | | | | | | | 0 | | | | |
| Shihte KESH | 17,496 | 5,650 | 630 | 3,744 | 1,490 | | | | | | | | | | 29,010 | | | | |
| Blerje ENER TRADE | | | | | | | | | | | | | | | 0 | | | | |
| Shihte KURUM | | | | | | | | | | | | | | | 0 | | | | |
| Shihte Power and Gas Operation | | | | | | | | | | | | | | | 0 | | | | |
| Shihte FTL | 1,344 | 1,486 | 1,440 | 1,488 | 1,440 | | | | | | | | | | 7,198 | | | | |
| Blerje FTL | | | | | | | | | | | | | | | 0 | | | | |
| Shihte EZ-5 Energy | 1,680 | | | | | | | | | | | | | | 1,680 | | | | |
| Shihte OST | 1,897 | 3,489 | 4,438 | 2,132 | | | | | | | | | | | 11,956 | | | | |
| Total transaksione | 48 | 3,441 | 5,974 | -2,209 | 5,527 | 2,787 | 0 | 0 | 0 | 0 | 0 | 0 | 0 | 0 | 15,548 | | | | |
| 3 | AYEN AS Energji | AL-GR Greece - IN | 0 | 0 | 0 | 0 | 0 | -147 | | | | | | | | -147 | | | |
| | | AL-KS Kosovo - IN | 0 | 0 | -2 | 0 | -239 | 0 | | | | | | | | -241 | | | |
| | | AL-ME Monte Negro - IN | -2,068 | -2,374 | -775 | -3,070 | -1,176 | -124 | | | | | | | | -9,587 | | | |
| | | Total IN | -2,068 | -2,374 | -777 | -3,070 | -1,415 | -271 | 0 | 0 | 0 | 0 | 0 | 0 | 0 | -9,975 | | | |
| | | AL-GR Greece - OUT | 10,158 | 12,011 | 1,199 | 29,412 | 9,074 | 3,666 | | | | | | | | | 65,460 | | |
| | | AL-KS Kosovo - OUT | 5,176 | 0 | 146 | 0 | 19 | | | | | | | | | | 5,360 | | |
| | | AL-ME Monte Negro - OUT | 6,353 | 3,171 | 15,202 | 10,538 | 7,631 | 2,687 | | | | | | | | | 45,582 | | |
| | | Total OUT | 21,687 | 15,182 | 16,547 | 39,950 | 16,714 | 6,312 | 0 | 0 | 0 | 0 | 0 | 0 | 0 | 0 | 116,392 | | |
| | | Total | 19,619 | 12,808 | 15,770 | 36,880 | 15,299 | 6,041 | 0 | 0 | 0 | 0 | 0 | 0 | 0 | 0 | 106,417 | | |
| | | Transaksi onet e brendsht me | Prodhimi | Prodhim BEC PESHQESH+HEC FANG | 47,550.6 | 31,931.4 | 22,787.6 | 45,447.0 | 17,156.0 | 6,827.0 | | | | | | | | 171,699.6 | |
| | | | Shihte Konsumatoreve te Kualifikuar | 47,550.6 | 31,931.4 | 22,787.6 | 45,447.0 | 17,156.0 | 6,827.0 | 0.0 | 0.0 | 0.0 | 0.0 | 0.0 | 0.0 | 0.0 | 0.0 | 171,699.6 | |
| | | | Shihte EZ-5 Energy | 331.6 | 147.4 | 42.6 | | | | | | | | | | | | 522 | |
| | | | Shihte OST | | | | | | | | | | | | | | | 0 | |
| | | | Shihte AVEN Energy Trading | 27,600.0 | 18,976.0 | 6,975 | 10,535 | 2,412 | 1,040 | | | | | | | | | 67,538 | |
| | | | Blerje AVEN Energy Trading | | | | | | | | | | | | | | | -2,777 | |
| | | | Total transaksione | 27,931.6 | 19,123.4 | 7,017.6 | 8,567.0 | 1,857.0 | 786.0 | 0.0 | 0.0 | 0.0 | 0.0 | 0.0 | 0.0 | 0.0 | 0.0 | 68,800 | |
| 4 | ENERGJI ASHTA | | AL-GR Greece - IN | | | | | | | | | | | | | | 0 | | |
| | | | AL-KS Kosovo - IN | | | | | | | | | | | | | | 0 | | |
| | | | AL-ME Monte Negro - IN | | | | | | | | | | | | | | 0 | | |
| | | Total IN | 0 | 0 | 0 | 0 | 0 | 0 | 0 | 0 | 0 | 0 | 0 | 0 | 0 | 0 | | | |
| | | AL-GR Greece - OUT | | | | | | | | | | | | | | | 0 | | |
| | | AL-KS Kosovo - OUT | | | | | | | | | | | | | | | 0 | | |
| | | AL-ME Monte Negro - OUT | | | | | | | | | | | | | | | 0 | | |
| | | Total OUT | 0 | 0 | 0 | 0 | 0 | 0 | 0 | 0 | 0 | 0 | 0 | 0 | 0 | 0 | | | |
| | | Total | 0 | 0 | 0 | 0 | 0 | 0 | 0 | 0 | 0 | 0 | 0 | 0 | 0 | 0 | | | |
| | | Transaksi onet e brendsht me | Prodhimi | Prodhim BEC ASHTA | 23,561 | 18,223 | 21,369 | 16,718 | 14,885 | 12,036 | | | | | | | | 106,792 | |
| | | | Total Prodhim | 23,561 | 18,223 | 21,369 | 16,718 | 14,885 | 12,036 | 0 | 0 | 0 | 0 | 0 | 0 | 0 | 0 | 106,792 | |
| | | | Shihte FTL | 23,561 | 18,223 | 21,369 | 16,718 | 14,885 | 12,036 | | | | | | | | | 106,792 | |
| | | | Total transaksione | 23,561 | 18,223 | 21,369 | 16,718 | 14,885 | 12,036 | 0 | 0 | 0 | 0 | 0 | 0 | 0 | 0 | 106,792 | |
| | | | 5 | GEN-4 | AL-GR Greece - IN | -8,178 | -4,517 | -26,120 | -2,742 | -1,885 | -25,298 | | | | | | | | -68,740 |
| | | | | | AL-KS Kosovo - IN | -21,333 | -10,426 | -5,100 | -11,748 | -20,170 | -15,394 | | | | | | | | -84,171 |
| | | | | | AL-ME Monte Negro - IN | -56,801 | -40,089 | -11,610 | -43,582 | -44,390 | -25,044 | | | | | | | | -201,516 |
| Total IN | -86,312 | | | | -55,032 | -42,830 | -58,072 | -66,445 | -45,736 | 0 | 0 | 0 | 0 | 0 | 0 | 0 | 0 | -354,427 | |
| AL-GR Greece - OUT | 21,215 | | | | 18,383 | 6,583 | 42,532 | 48,316 | 15,086 | | | | | | | | | 148,835 | |
| AL-KS Kosovo - OUT | 4,553 | | | | 2,865 | 8,791 | 6,664 | 560 | 6,250 | | | | | | | | | 29,683 | |
| AL-ME Monte Negro - OUT | 3,552 | 3,047 | | | 11,664 | 4,302 | 3,895 | 27,076 | | | | | | | | | 53,536 | | |
| Total OUT | 29,320 | 24,295 | | | 27,038 | 53,498 | 48, | | | | | | | | | | | | |

| Treguesit Kryesore të performancës ne furnizim 2021 (sipas muajve dhe niveleve te tensionit) | | | | |
|---|----|-------------|-------------|-------------|
| | | SAIFI | SAIDI | CAIDI |
| Janar | TL | 0.66 | 0.89 | 1.36 |
| | TM | 2.53 | 6.25 | 2.48 |
| | TU | 0.24 | 0.29 | 1.27 |
| OSSH | | 3.42 | 7.44 | 5.06 |
| Shkurt | TL | 0.41 | 0.98 | 2.38 |
| | TM | 2.17 | 4.44 | 2.04 |
| | TU | 0.18 | 0.23 | 1.79 |
| OSSH | | 2.76 | 5.65 | 5.71 |
| Mars | TL | 0.40 | 0.65 | 1.63 |
| | TM | 1.38 | 3.30 | 2.38 |
| | TU | 0.20 | 0.32 | 1.64 |
| OSSH | | 1.98 | 4.27 | 5.65 |
| Prill | TL | 0.36 | 0.45 | 1.24 |
| | TM | 1.14 | 2.08 | 1.83 |
| | TU | 0.15 | 0.20 | 1.65 |
| OSSH | | 2.67 | 5.58 | 5.87 |
| Maj | TL | 0.39 | 1.03 | 2.62 |
| | TM | 1.16 | 1.68 | 1.44 |
| | TU | 0.15 | 0.19 | 1.70 |
| OSSH | | 1.70 | 2.89 | 5.76 |
| Qershor | TL | 0.63 | 0.99 | 1.58 |
| | TM | 1.39 | 2.24 | 1.61 |
| | TU | 0.20 | 0.29 | 1.45 |
| OSSH | | 2.22 | 3.52 | 1.59 |

2.85

| Treguesit Kryesore të performancës ne furnizim 2021 Gjatë 6- mujorit të parë 2021 në Sistemin e Shpërndarjes | | | | |
|---|--|--------------|--------------|--------------|
| | | SAIFI | SAIDI | CAIDI |
| Janar | | 3.42 | 7.44 | 5.06 |
| Shkurt | | 2.76 | 5.65 | 5.71 |
| Mars | | 1.98 | 4.27 | 5.65 |
| Prill | | 2.67 | 5.58 | 5.87 |
| Maj | | 1.70 | 2.89 | 5.76 |
| Qershor | | 2.22 | 3.52 | 1.59 |
| OSSH | | 14.75 | 29.34 | 29.64 |

| Krahësimi i 6-Mujorëve te parë 2020-2021 i treguesve të performancës ne furnizim në tension të lartë dhe të mesëm (Treguesit për tensionin e ulët kanë filluar të raportohen gjatë vitit 2021) | | | | |
|--|--------------|--------------|--------------|--------------|
| | SAIFI | | SAIDI | |
| | 2020 | 2021 | 2020 | 2021 |
| Total TL | 2.07 | 2.85 | 4.12 | 4.98 |
| Total TM | 8.65 | 9.77 | 16.91 | 19.99 |
| Total TU | | | | |
| Total TM + TL | 10.72 | 12.62 | 21.03 | 24.97 |

| LEGJENDA | |
|--------------|--|
| SAIFI | Nr.i konsumatoreve te prekur nga nderprerjet/Nr. Kons.Gjithsej |
| SAIDI | Nr.i oreve te nderprerjeve gjithsej/Nr. Konsumatoreve Gjithsej |
| CAIDI | Nr.i oreve te nderprerjeve gjithsej/Nr. Kons. Te prekur nga nderprerjet |
| N1 | Numri total i nderprerjeve te paplanifikuara per nje klient te prekur |
| D1 | Kohezgatija totale per nje klient te prekur nga nderprerjet e paplanifikuara |

| Treguesit Kryesore të performancës ne furnizim 2022 (sipas muajve dhe niveleve te tensionit) | | | | |
|---|----|-------------|-------------|-------------|
| | | SAIFI | SAIDI | CAIDI |
| Janar | TL | 0.60 | 0.60 | 1.00 |
| | TM | 1.84 | 3.50 | 1.91 |
| | TU | 0.21 | 0.26 | 1.28 |
| OSSH | | 2.65 | 4.36 | 4.19 |
| Shkurt | TL | 0.48 | 1.54 | 3.19 |
| | TM | 2.06 | 4.69 | 2.28 |
| | TU | 0.14 | 0.20 | 1.41 |
| OSSH | | 2.68 | 6.43 | 6.88 |
| Mars | TL | 0.59 | 1.85 | 3.15 |
| | TM | 1.58 | 3.40 | 2.15 |
| | TU | 0.21 | 0.27 | 1.27 |
| OSSH | | 2.38 | 5.52 | 6.57 |
| Prill | TL | 1.19 | 1.64 | 1.38 |
| | TM | 2.26 | 4.03 | 1.79 |
| | TU | 0.20 | 0.08 | 0.37 |
| OSSH | | 3.65 | 5.75 | 3.54 |
| Maj | TL | 0.52 | 1.32 | 2.55 |
| | TM | 1.67 | 2.56 | 1.53 |
| | TU | 0.17 | 0.22 | 1.30 |
| OSSH | | 2.36 | 4.10 | 5.38 |
| Qershor | TL | 0.44 | 0.71 | 1.60 |
| | TM | 1.88 | 3.01 | 1.60 |
| | TU | 0.17 | 0.21 | 1.19 |
| OSSH | | 2.49 | 3.93 | 4.39 |

| Treguesit Kryesore të performancës ne furnizim 2022 Gjatë 6- mujorit të parë 2022 në Sistemin e Shpërndarjes | | | | |
|---|--|--------------|--------------|--------------|
| | | SAIFI | SAIDI | CAIDI |
| Janar | | 2.65 | 4.36 | 4.19 |
| Shkurt | | 2.68 | 6.43 | 6.88 |
| Mars | | 2.38 | 5.52 | 6.57 |
| Prill | | 3.65 | 5.75 | 3.54 |
| Maj | | 2.36 | 4.10 | 5.38 |
| Qershor | | 2.49 | 3.93 | 4.39 |
| OSSH | | 16.21 | 30.09 | 30.95 |

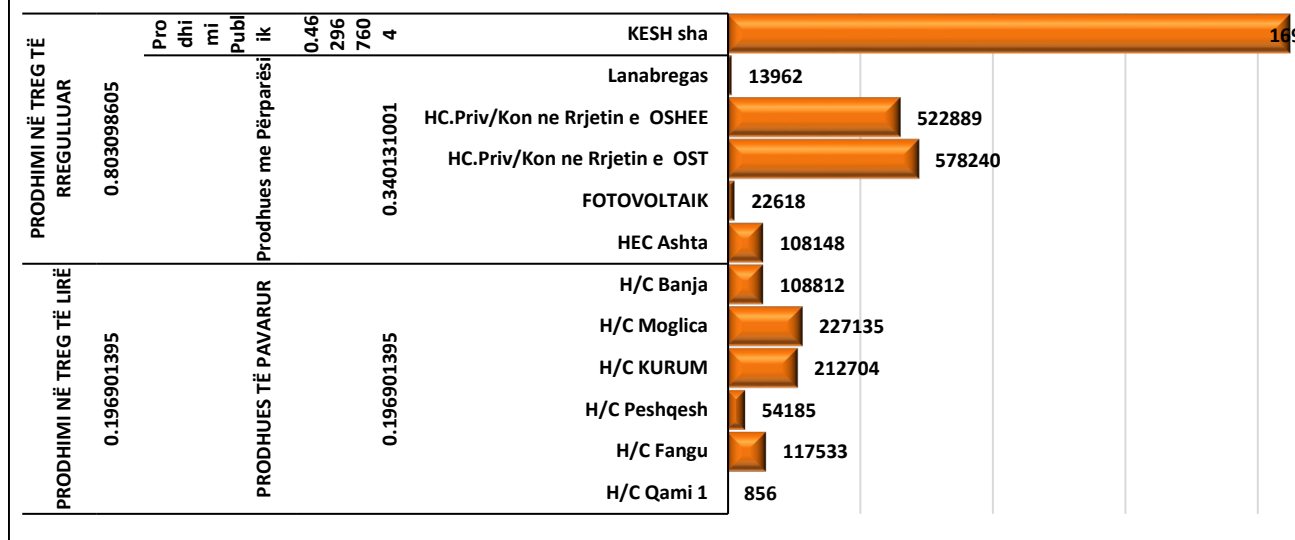
| Krahësimi i 6-Mujorëve te parë 2022-2021 i treguesve të performancës ne furnizim në tension të lartë dhe të mesëm (Treguesit për tensionin e ulët kanë filluar të raportohen gjatë vitit 2021) | | | | |
|--|--------------|--------------|--------------|--------------|
| | SAIFI | | SAIDI | |
| | 2022 | 2021 | 2022 | 2021 |
| Total TL | 3.82 | 2.85 | 7.66 | 4.98 |
| Total TM | 11.29 | 9.77 | 21.19 | 19.99 |
| Total TU | 1.10 | | 1.24 | |
| Total TM + TL | 16.21 | 12.62 | 30.09 | 24.97 |

| LEGJENDA | |
|--------------|--|
| SAIFI | Nr.i konsumatoreve te prekur nga nderprerjet/Nr. Kons.Gjithsej |
| SAIDI | Nr.i oreve te nderprerjeve gjithsej/Nr. Konsumatoreve Gjithsej |
| CAIDI | Nr.i oreve te nderprerjeve gjithsej/Nr. Kons. Te prekur nga nderprerjet |
| N1 | Numri total i nderprerjeve te paplanifikuara per nje klient te prekur |
| D1 | Kohezgatija totale per nje klient te prekur nga nderprerjet e paplanifikuara |

TË DHËNA TË TREGUT TË ENERGJISË ELEKTRIKE PËR 6-Mujorin V

| | | | | | | | | | | | |
|---------------------------------------|-----------------------|---------------------------------------|-------------------------------------|--------------------|------------------|---------------------------------|--------------------|------------------|---------------------|------------------|-------------------|
| Prodhimi Vendas | | 3,662,874 MWh | | | | | | | | | |
| PRODHIMI NË TREG TË RREGULLUAR | | | | | | PRODHIMI NË TREG TË LIRË | | | | | |
| 80.3% | | | | | | 19.7% | | | | | |
| <i>Prodhimi Publik</i> | Prodhues me Përparësi | | | | | PRODHUES TË PAVARUR | | | | | |
| 46.3% | 34.0% | | | | | 19.7% | | | | | |
| KESH sha | Lanabregas | HC.Priv/Kon ne Rrjetin e OSHEE | HC.Priv/Kon ne Rrjetin e OST | FOTOVOLTAIK | HEC Ashta | H/C Banja | H/C Moglica | H/C KURUM | H/C Peshqesh | H/C Fangu | H/C Qami 1 |
| ##### | 13,962 | 522,889 | 578,240 | 22,618 | 108,148 | 108,812 | 227,135 | 212,704 | 54,185 | 117,533 | 856 |
| 46.3% | 0.4% | 14.3% | 15.8% | 0.6% | 3.0% | 3.0% | 6.2% | 5.8% | 1.5% | 3.2% | 0.0% |

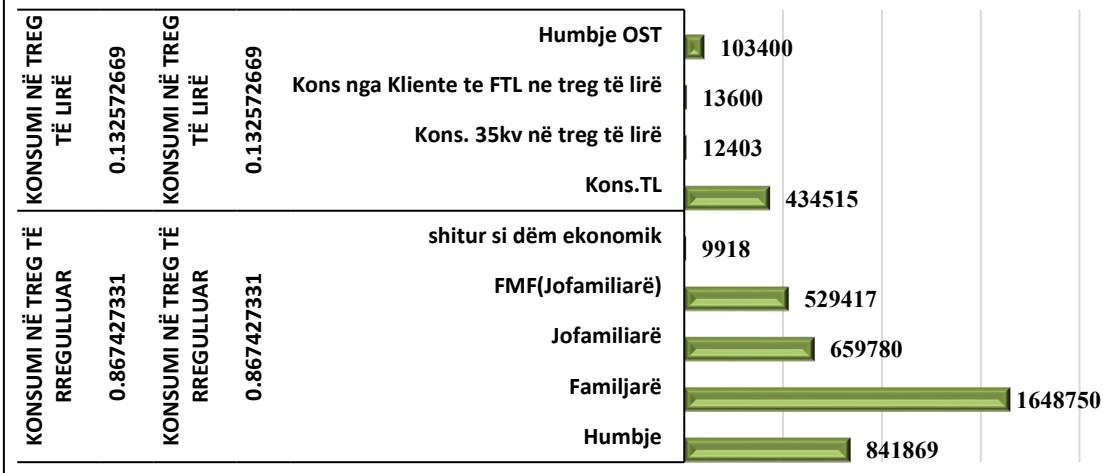
PRODHIMI VENDAS DHE % NË RAPORT ME KONSUMIN VENDAS PËR 6-Mujorin VITI 2022 (MWh)



VITI 2022 NË RAPORT ME ENERGIJË E KONSUMUAR NË SHQIPËRI

| | | | | | | | | | | | |
|---------------------------------|--|--|--|----------------------------|--|---|--|-------------------|--|------------------------|--|
| 590,781 MWh | | Konsumi Vëndas 4,253,652 MWh | | | | | | | | | |
| BALLANCA | | KONSUMI NË TREG TË RREGULLUAR | | | | KONSUMI NË TREG TË LIRË | | | | | |
| Hyrje(+), Dalje (-) | | 86.7% | | | | 13.3% | | | | | |
| 9.8% | | KONSUMI NË TREG TË RREGULLUAR | | | | KONSUMI NË TREG TË LIRË | | | | | |
| BALLANCA | | 86.7% | | | | 13.3% | | | | | |
| 9.8% | | Humbje | | Familjarë | | Jofamiliarë | | FMF (Jofamiliarë) | | shitur si dëm ekonomik | |
| Hyrje/Dalje nga Interkoneksioni | | Kons.TL | | Kons. 35kv në treg të lirë | | Kons nga Kliente te FTL ne treg të lirë | | Humbje OST | | | |
| 590,781 | | 841,869 | | 1,648,750 | | 659,780 | | 529,417 | | 9,918 | |
| 9.8% | | 19.8% | | 38.8% | | 15.5% | | 12.4% | | 0.2% | |
| | | 434,515 | | 12,403 | | 13,600 | | 103,400 | | | |
| | | 10.2% | | 0.3% | | 0.3% | | 2.4% | | | |

KONSUMI I ENERGIJË ELEKTRIKE NË SHQIPËRI DHE % PËRKATËSE SIPAS GRUPIMEVE TË TREGUT PËR 6-Mujorin VITI 2022 (MWh)



Blerjet e FTL sh.a të energjisë elektrike në tregun e hapur për vitin 2022

| Muaji | Kompanitë fituese | Sasia (MWh) | Çmimi Euro/MWh | Vlera pa TVSH (Euro) |
|---------|--|---------------|----------------|----------------------|
| JANAR | NOA Energy Trade SH.P.K. | 2,976 | 230.90 | 687,158 |
| | Ayen Energy Trading SH.A. | 9,048 | 229.91 | 2,080,226 |
| | Tirana International Development SH.P.K. | 19,440 | 257.00 | 4,996,080 |
| | INFO-TELECOM SH.P.K. | 11,880 | 257.20 | 3,055,536 |
| SHKURT | NOA Energy Trade SH.P.K. | 2,688 | 230.90 | 620,659 |
| | Ayen Energy Trading SH.A. | 1,344 | 229.91 | 308,999 |
| MARS | NOA Energy Trade SH.P.K. | 2,972 | 230.90 | 686,235 |
| | Ayen Energy Trading SH.A. | 1,486 | 229.91 | 341,646 |
| PRILL | NOA Energy Trade SH.P.K. | 2,880 | 230.90 | 664,992 |
| | Ayen Energy Trading SH.A. | 1,440 | 229.91 | 331,070 |
| MAJ | NOA Energy Trade SH.P.K. | 2,976 | 230.90 | 687,158 |
| | Ayen Energy Trading SH.A. | 1,488 | 229.91 | 342,106 |
| QERSHOR | NOA Energy Trade SH.P.K. | 2,880 | 230.90 | 664,992 |
| | Ayen Energy Trading SH.A. | 1,440 | 229.91 | 331,070 |
| | | 64,938 | 243.3 | 15,797,929 |

Blerje energji elektrike nga KESH sha 2022 (sipas detyrimit për shërbim publik të vendosur me VKM 757/2021)

| Shoqëria | Periudha | Statusi | Sasia | Çmimi | Vlera |
|----------|---------------|---------------|----------------|--------------|--------------------|
| | | | MWh | Euro/MWh | Euro |
| Janar | 01-31.01.2022 | Blerje | 137,750 | 237 | 32,677,830 |
| Shkurt | 01-28.02.2022 | Blerje | 209,736 | 230 | 48,311,804 |
| Mars | 01-31.03.2022 | Blerje | 165,655 | 238 | 39,408,783 |
| Prill | 01-30.04.2022 | Blerje | 44,328 | 210 | 9,291,903 |
| Maj | 01-31.05.2022 | Blerje | 76,864 | 211 | 16,184,915 |
| Qershor | 01-30.06.2022 | Blerje | 117,973 | 231 | 27,233,280 |
| | TOTALE | Blerje | 752,306 | 230.1 | 173,108,515 |

Blerjet e OST sh.a te energjise elektrike ne tregun e hapur per vitin 2022

| Muaji | Kompanitë fituese | Intervali i lëvrimit | Sasia (MWh) | Çmimi Euro/MWh | Vlera pa TVSH (Euro) |
|-----------------------------------|---------------------------------------|----------------------|-------------|----------------|----------------------|
| DR 2022 | DEVOLL HYDROPOWER SH.A | BAND | 9,216 | 259.20 | 2,388,787 |
| | DEVOLL HYDROPOWER SH.A | ORAR | 2,079 | 259.50 | 539,501 |
| | ENER TRADE SH.P.K | ORAR | 1,407 | 224.30 | 315,590 |
| | ENER TRADE SH.P.K | ORAR | 1,568 | 279.30 | 437,942 |
| | DANKSE COMMODITIES ALBANIA SH.P.K | BAND | 1,008 | 254.73 | 256,768 |
| | GSA SH.P.K | BAND | 720 | 254.15 | 182,988 |
| | DANKSE COMMODITIES ALBANIA SH.P.K | HOURLY | 1,662 | 284.73 | 473,221 |
| | GEN-I TIRANA SH.P.K | BAND | 1,680 | 228.95 | 384,636 |
| | ENER TRADE SH.P.K | ORAR | 2,695 | 252.00 | 679,140 |
| | ENER TRADE SH.P.K | BAND | 1,680 | 209.20 | 351,456 |
| | DEVOLL HYDROPOWER SH.A | ORAR | 2,170 | 221.90 | 481,523 |
| | ENER TRADE SH.P.K | BAND | 1,848 | 197.00 | 364,056 |
| | AYEN ENERGY TRADING SH.A | ORAR | 1,897 | 215.27 | 408,367 |
| | ENER TRADE SH.P.K | BAND | 2,016 | 303.60 | 612,058 |
| | AYEN ENERGY TRADING SH.A | ORAR | 1,485 | 318.20 | 472,527 |
| | GEN-I TIRANA SH.P.K | BAND | 2,016 | 388.15 | 782,510 |
| | TIRANA INTERNATIONAL DEVELOPMENT SH.A | ORAR | 2,184 | 438.00 | 956,592 |
| | ENER TRADE SH.P.K | BAND | 2,352 | 335.70 | 789,566 |
| | TIRANA INTERNATIONAL DEVELOPMENT SH.A | ORAR | 1,848 | 359.50 | 664,356 |
| | AYEN ENERGY TRADING SH.A | BAND | 2,004 | 274.10 | 549,296 |
| | GSA SH.P.K | ORAR | 1,834 | 302.00 | 553,868 |
| | NOA ENERGY TRADING SH.P.K | BAND | 1,848 | 240.00 | 443,520 |
| | AYEN ENERGY TRADING SH.A | BAND | 435 | 267.39 | 116,315 |
| | AYEN ENERGY TRADING SH.A | ORAR | 435 | 225.85 | 98,245 |
| | GEN-I TIRANA SH.P.K | ORAR | 485 | 224.22 | 108,747 |
| | AYEN ENERGY TRADING SH.A | BAND | 1,728 | 242.79 | 419,541 |
| | AYEN ENERGY TRADING SH.A | ORAR | 214 | 267.30 | 57,202 |
| | DANKSE COMMODITIES ALBANIA SH.P.K | ORAR | 215 | 272.89 | 58,671 |
| | DANKSE COMMODITIES ALBANIA SH.P.K | ORAR | 237 | 214.14 | 50,751 |
| | DANKSE COMMODITIES ALBANIA SH.P.K | ORAR | 237 | 194.98 | 46,210 |
| | AYEN ENERGY TRADING SH.A | BAND | 312 | 248.93 | 77,666 |
| | AYEN ENERGY TRADING SH.A | ORAR | 213 | 279.19 | 59,467 |
| | AYEN ENERGY TRADING SH.A | BAND | 312 | 234.71 | 73,230 |
| | DANKSE COMMODITIES ALBANIA SH.P.K | ORAR | 213 | 257.83 | 54,918 |
| | GSA SH.P.K | BAND | 312 | 199.69 | 62,303 |
| | GSA SH.P.K | ORAR | 213 | 223.67 | 47,642 |
| | DANKSE COMMODITIES ALBANIA SH.P.K | ORAR | 213 | 194.38 | 41,403 |
| | GEN-I TIRANA SH.P.K | BAND | 1,248 | 223.89 | 279,415 |
| | GEN-I TIRANA SH.P.K | ORAR | 213 | 268.06 | 57,097 |
| | AYEN ENERGY TRADING SH.A | BAND | 312 | 247.95 | 77,360 |
| | AYEN ENERGY TRADING SH.A | ORAR | 213 | 265.43 | 56,537 |
| | GSA SH.P.K | BAND | 264 | 241.32 | 63,708 |
| GSA SH.P.K | ORAR | 166 | 260.63 | 43,265 | |
| GEN-I TIRANA SH.P.K | BAND | 264 | 244.00 | 64,416 | |
| DANKSE COMMODITIES ALBANIA SH.P.K | ORAR | 166 | 257.70 | 42,778 | |
| AYEN ENERGY TRADING SH.A | BAND | 264 | 219.11 | 57,845 | |
| GEN-I TIRANA SH.P.K | ORAR | 166 | 234.01 | 38,846 | |

JANAR - QERSHO

| | | | | |
|-----------------------------------|--------|---------------|---------------|----------------------|
| RENRGY TRADING SH.P.K | BAND | 576 | 205.00 | 118,080 |
| AYEN ENERGY TRADING SH.A | BAND | 288 | 239.11 | 68,864 |
| AYEN ENERGY TRADING SH.A | ORAR | 162 | 247.21 | 40,048 |
| AYEN ENERGY TRADING SH.A | ORAR | 324 | 253.10 | 82,004 |
| AYEN ENERGY TRADING SH.A | BAND | 864 | 241.71 | 208,837 |
| GEN-I TIRANA SH.P.K | ORAR | 162 | 255.04 | 41,316 |
| GSA SH.P.K | BAND | 432 | 226.76 | 97,960 |
| RENRGY TRADING SH.P.K | BAND | 1,080 | 217.92 | 235,354 |
| RENRGY TRADING SH.P.K | BAND | 1,080 | 224.44 | 242,395 |
| AYEN ENERGY TRADING SH.A | ORAR | 324 | 221.39 | 71,730 |
| ENER TRADE SH.P.K | ORAR | 170 | 253.00 | 43,010 |
| AYEN ENERGY TRADING SH.A | ORAR | 170 | 247.45 | 42,067 |
| ENER TRADE SH.P.K | ORAR | 170 | 246.00 | 41,820 |
| GSA SH.P.K | ORAR | 172 | 237.29 | 40,814 |
| GSA SH.P.K | ORAR | 172 | 203.00 | 34,916 |
| ENER TRADE SH.P.K | BAND | 288 | 242.00 | 69,696 |
| ENER TRADE SH.P.K | ORAR | 172 | 250.00 | 43,000 |
| ENER TRADE SH.P.K | ORAR | 172 | 243.00 | 41,796 |
| GSA SH.P.K | BAND | 288 | 229.19 | 66,007 |
| ENER TRADE SH.P.K | ORAR | 138 | 231.00 | 31,878 |
| RENRGY TRADING SH.P.K | BAND | 312 | 216.69 | 67,607 |
| ENER TRADE SH.P.K | BAND | 312 | 221.00 | 68,952 |
| DANKSE COMMODITIES ALBANIA SH.P.K | BAND | 288 | 229.00 | 65,952 |
| GSA SH.P.K | BAND | 264 | 211.00 | 55,704 |
| GSA SH.P.K | HOURLY | 111 | 218.56 | 24,260 |
| GSA SH.P.K | BAND | 264 | 221.78 | 58,550 |
| GSA SH.P.K | ORAR | 101 | 228.74 | 23,103 |
| DANKSE COMMODITIES ALBANIA SH.P.K | BAND | 264 | 210.73 | 55,633 |
| GEN-I TIRANA SH.P.K | ORAR | 72 | 256.00 | 18,432 |
| GEN-I TIRANA SH.P.K | BAND | 288 | 244.55 | 70,430 |
| DANKSE COMMODITIES ALBANIA SH.P.K | BAND | 288 | 233.28 | 67,185 |
| GEN-I TIRANA SH.P.K | BAND | 288 | 277.00 | 79,776 |
| DANKSE COMMODITIES ALBANIA SH.P.K | BAND | 288 | 219.29 | 63,156 |
| GEN-I TIRANA SH.P.K | BAND | 288 | 197.00 | 56,736 |
| DANKSE COMMODITIES ALBANIA SH.P.K | BAND | 264 | 247.70 | 65,393 |
| DANKSE COMMODITIES ALBANIA SH.P.K | BAND | 264 | 247.89 | 65,443 |
| GEN-I TIRANA SH.P.K | BAND | 264 | 233.00 | 61,512 |
| RENRGY TRADING SH.P.K | BAND | 264 | 226.69 | 59,846 |
| GEN-I TIRANA SH.P.K | BAND | 264 | 199.00 | 52,536 |
| GEN-I TIRANA SH.P.K | BAND | 81 | 208.00 | 16,848 |
| DANKSE COMMODITIES ALBANIA SH.P.K | BAND | 264 | 236.70 | 62,489 |
| RENRGY TRADING SH.P.K | BAND | 264 | 230.00 | 60,720 |
| DANKSE COMMODITIES ALBANIA SH.P.K | BAND | 288 | 244.00 | 70,272 |
| GSA SH.P.K | BAND | 288 | 263.99 | 76,029 |
| GEN-I TIRANA SH.P.K | BAND | 288 | 239.90 | 69,091 |
| DANKSE COMMODITIES ALBANIA SH.P.K | BAND | 576 | 179.00 | 103,104 |
| GEN-I TIRANA SH.P.K | BAND | 288 | 279.00 | 80,352 |
| GEN-I TIRANA SH.P.K | BAND | 288 | 324.00 | 93,312 |
| GEN-I TIRANA SH.P.K | BAND | 288 | 304.90 | 87,811 |
| DANKSE COMMODITIES ALBANIA SH.P.K | BAND | 288 | 295.30 | 85,046 |
| RENRGY TRADING SH.P.K | BAND | 288 | 265.29 | 76,404 |
| DANKSE COMMODITIES ALBANIA SH.P.K | BAND | 288 | 356.70 | 102,730 |
| RENRGY TRADING SH.P.K | BAND | 288 | 368.88 | 106,237 |
| TOTALI 2022 | | 72,284 | 263.88 | 19,074,090.00 |

CMIMI MESATAR I PONDERUAR I ENERJISE ELEKTRIKE TE BLERE NE TREG TE LIBERALIZUAR 6-MUJORI PARE 2022

| | Sasia (MWh) | Cmimi Euro/MWh | Vlera Euro |
|---|-------------|----------------|--------------|
| BLERJET NE TREG TE LIBERALIZUAR 6-mujori 2022 | FTL sha | 64,938 | 243.3 |
| | KESH sha | 138,086 | 254.6 |
| | OST sha | 333,322 | 256.27 |
| | | 536,346 | 254.3 |
| | | | 136,376,996 |