

**BILANCI ENERJITIK 4-MUJORI 2022 (MWh)**

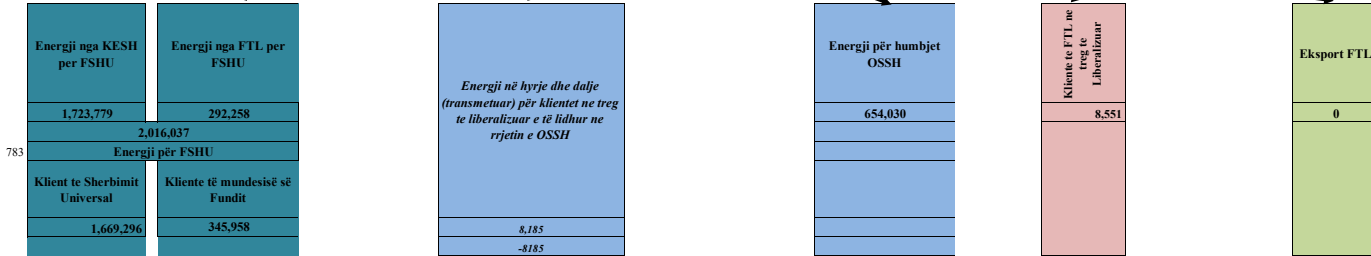
Prodhimi neto nga prodhuesi i ngarkuar me detyrimin e shërbimit publik	
<b>Prodhimi KESH sha</b>	
1,249,899	
Blerje KESH, sha ne treg te liberalizuar	557,469
<b>Prodhim+Blerje</b>	<b>1,807,368</b>
Shkembime (hyrje) KEK	37,529
Shkembime (dalje) KEK	- 26,262
Energji shërbime ndihmese+disbal	72,322
Energji per FSHU nga KESH sha	1,723,779

Prodhuar nga PPE në rrjetin e OSSH			Prodhuesit me përparësi të lidhur ne rrjetin e OST sha		Prodhues te pavarur				
Hec Lanabregas sha	Prodhuesit me përparësi të lidhur Rrjetin e OSSH për FTL sha	FOTOVOLTAIK	Prodhuesit me përparësi të lidhur Rrjetin e OST për FTL sha	Hec Ashta	Hec Banja	Hec Munglca	KURUM sha	H/C Peshqesh	H/C Fangu
9,362	387,897	13,075	405,952	82,186	82,582	180,328	152,416	45,075	102,636

<b>Prodhim neto vendas</b>
2,711,408

Energji e siguruar nga FTL						
Hec Lanabregas sha	Prodhuesit me përparësi të lidhur Rrjetin e OSSH për FTL sha	Blerje FOTOVOLTAIK	Prodhuesit me përparësi të lidhur Rrjetin e OST për FTL sha	Blerje nga Hec Ashta	Blerje ne Treg të Liberalizuar nga FTL	nga ost për n/st Ballsh
9,362	387,897	13,075	405,952	82,186	56,154	213
<b>954,839</b>						

<b>Ballanca në interkoneksion (marrje)</b>
313,959



783

<b>KONSUMI TOTAL 2022 (4-mujori)</b>	3,025,366
--------------------------------------	-----------

<b>Konsumi total vendas</b>
3,025,367

*Burimi: OST sha; KESH sha; OSSH sha; FSHU sha; FTL sha; (OSHEE Group sha)*

PARAQITJA SKEMATIKE E FLUKSEVE TE ENERGIJISE NE SISTEMIN ELEKTRO-ENERGJITIK SHQIPETAR 4-mujori VITI 2022 (MWh)

Energji e lëvruar nga H/C-et e KESH sha	Energji e lëvruar nga prodhuesit me përparësi lidhur ne TL (kontrate me FTL sha)	Energji e lëvruar nga H/C ASHTA lidhur ne TL (kontrate me FTL sha)	Energji e lëvruar nga prodhuesit me përparësi të lidhur ne TL (Prodhues ne treg te hapur)					Energji ne hyrje nga Interkonieksioni
1,249,899	405,952	82,186	Kurum sha	Hec.Banje	Hec.Moglice	Hec.Fangu	Hec.Peshqesh	841,875
			152,416	82,582	180,328	102,636	45,075	

**3,324,922** — ENERGIJ HYRESE NE RRJETIN E TRANSMETIMIT

181,973	H.C.Priv/Kon + CENTR Fotovoltaikë ne Rrjetin e OSHEE		Humbje + Konsum ne Transmetim	Konsumi i klienteve në treg të hapur te lidhur ne Transmetim	Energji ne dalje nga Interkonieksioni
Neto (Selit)	400,972		72,252	267,307	527,917
9,362	410,334			213 Tec Ballshi perfishire	

Energji e tranmetuar direkt ne rrjetin e OSSH	Energji e tranmetuar ne rrjetin e Shperndarjes nga OST
228,361	2,457,446

**2,685,807** — ENERGIJ HYRESE NE RRJETIN E SHPERNDARJES

Shitur Kons Familjare FSHU	1,214,401	2,015,041	<b>2,685,807</b>
Shitur Kons Jo Familjare FSHU	446,056		
Shitur Kons Jo Familjare FMF	345,958		
*Shitur klienteve tarifor si dem ekonomik	8,626		
Humbje tekn TL	37,213	654,030	
Humbje teknike ne zona	394,924		
Humbje Jo teknike ne zona	221,893		
Shitur Kons FTL	8,551	8,551	
Lëvruar ne rrjetin e OSSH (tarifë akses)	8,185	8,185	
	<b>2,685,807</b>		

Konsumuar Klientet lidhur në OST(+Ballsh)	267,307	<b>339,559</b>
Konsumuar nga OST (humbje +nevoja vetiake)	72,252	
	<b>339,559</b>	

ENERGIJ E KONSUMUAR NE RRJETIN E SHPERNDARJES

ENERGIJ E KONSUMUAR NE RRJETIN E SHPERNDARJES

ENERGIJ E KONSUMUAR NE SHQIPERI

**3,025,366**

\* Sipas raportimeve te OSHEE Group sha

LEGJENDA	
FSHU	FURNIZUES I SHËRBIMIT UNIVERSAL
FMF	FURNIZUES I MUNDËSISË SË FUNDIT

**Burimi OST ,OSHEE sha**

TABELA ME TE DHENA PERIODIKE (MUJORE) TE OSHEE Sh.a 2022		Janar	Shkurt	Mars	Prill	Progresive	
<b>A</b>	<b>Energji Totale e Hyrë në OSHEE Sh.a (MWh)</b>	<b>A=A.1+A.3-A1.7</b>	<b>774,084</b>	<b>656,456</b>	<b>698,991</b>	<b>556,275</b>	<b>2,685,807</b>
A.1	Energji e transmetuar nepermjet OST per llogari te OSHEE Sh.a	A.1=Sum(A.1.1,A.1.6)	686,069	577,271	618,613	393,520	2,275,473
A.1.1	Nga KESH -Gen nepermjet OST		530,368	477,682	525,853	189,876	1,723,779
A.1.2	Nga OST si import i OSHEE Sh.a		43,344	4,032	4,458	4,320	56,154
A.1.3	Energji e transmetuar per klientet 35kV (te dal ne treg te parregulluar furnizues te tjere)		2,478	1,682	2,074	1,951	8,185
A.1.4	Nga OST per llogari te klienteve te OSHEE Sh.a prodhuar nga HEC-et ne rrjetin e transmetimit		109,878	93,875	86,228	197,373	487,354
A.1.5	Nga TEC VLORA nepermjet OST		n/a	n/a	n/a	n/a	n/a
A.1.6	Nga Bistrica 1,2 nepermjet OST		n/a	n/a	n/a	n/a	n/a
A.1.7	Export OSHEE Group Sh.a		-	-	-	-	-
A.2	Energji elektrike e injektuar ne OST nga Hec-et Lokale	A.2	29,707	29,382	26,664	96,219	181,973
A.3	Energji e transmetuar direkt ne rrjetin e OSHEE Sh.a	A.3 = Sum(A.3.1, A.3.3)	88,016	79,185	80,378	162,756	410,334
A.3.1	HEC Ulez, Lanabregas		2,465	2,172	2,273	2,451	9,362
A.3.2	Impjantet Private/me Koncesion		83,069	74,132	74,479	156,218	387,898
A.3.3	Burimet e Rinovueshme Fotovoltaik (BRE)		2,482	2,881	3,626	4,086	13,075
<b>B</b>	<b>Energji Totale ne Rrjetin e Shperndarjes (MWh)</b>	<b>B=A+A.1.3+A.2</b>	<b>803,791</b>	<b>685,838</b>	<b>725,656</b>	<b>652,495</b>	<b>2,867,780</b>
<b>C</b>	<b>Humbjet Totale ne Rrjetin e Shperndarjes (MWh)</b>	<b>C=C.1+C.2+C.3</b>	<b>228,398</b>	<b>134,806</b>	<b>171,818</b>	<b>119,008</b>	<b>654,030</b>
C.1	Humbje Teknikte njesite e TL (MWh)		11,779	7,792	8,153	9,488	37,213
C.2	Humbje Teknikte ne Zona (MWh)		137,678	82,990	103,429	70,765	394,924
C.3	Humbje JoTeknike ne Zona (MWh)		78,942	44,024	60,173	38,755	221,893
<b>C.1</b>	<b>Humbjet Totale ne OSHEE Sh.a (%)</b>	<b>C.1+ C/ B</b>	<b>28.42%</b>	<b>19.66%</b>	<b>23.68%</b>	<b>18.24%</b>	<b>22.81%</b>
C.1.1	Humbje Teknikte njesite e TL (%)		1.47%	1.14%	1.12%	1.45%	1.30%
C.2.1	Humbje Teknikte ne Zona (%)		17.39%	12.25%	14.43%	11.01%	13.96%
C.3.1	Humbje JoTeknike ne Zona (%)		9.82%	6.42%	8.29%	5.94%	7.74%
<b>D</b>	<b>Energjia e perdorur ne Rrjetin e Shperndarjes</b>	<b>D=Sum(D.1-D.7)</b>	<b>571,232</b>	<b>545,260</b>	<b>549,709</b>	<b>530,370</b>	<b>2,196,570</b>
D.1	Shitur Klienteve FMF (MWh)	D.1=D.1.1+D.1.2	84,224	87,386	92,818	81,530	345,958
D.1.1	Shitur Klienteve FMF Privat (MWh)		257	209	1,227	1,385	3,078
D.1.2	Shitur Klienteve FMF JoBuxhetore(MWh)		1,580	1,411	1,552	23	4,566
D.1.3	Shitur Klienteve FMF 20/10/6 (MWh)		82,387	85,766	90,039	80,122	338,315
D.2	Shitur Klienteve Private (MWh)	D.2= D.2.1+D.2.2+D.2.3	93,710	91,569	94,256	81,273	360,808
D.2.1	Shitur nga rrjeti i Transmetimit per llogari te OSHEE Sh.a		-	-	-	-	-
D.2.2	Shitur per nevoja te veta te OSHEE Sh.a		689	633	660	546	2,527
D.2.3	Shitur Klienteve Private (pa ate per nevoja te veta dhe Ne TL)		93,022	90,936	93,596	80,727	358,281
D.3	Shitur Klienteve JoBuxhetore (MWh)		3,726	4,106	4,009	3,510	15,350
D.4	Shitur Klienteve Buxhetore (MWh)		17,878	18,635	18,291	15,090	69,894
D.5	Shitur Klienteve Familjare (MWh)	D.5=D.5.1+D.5.2	339,508	312,500	311,596	250,797	1,214,401
D.5.1	Shitur Klienteve Familjare (MWh)		332,522	305,540	304,218	243,411	1,185,691
D.5.2	Shitur Klienteve Familjare per Ambjentet e Perbasketa		6,985	6,960	7,378	7,386	28,710
D.6	Energji elektrike e injektuar ne OST nga Hec-et Lokale	D.6=A.2	29,707	29,382	26,664	96,219	181,973
D.7	Energji elektrike e perdorur nga klientet ne treg te parregulluar	D.7	2,478	1,682	2,074	1,951	8,185
<b>E</b>	<b>Faturuar muaji Parardhes (000/leke)</b>		<b>7,572,744</b>	<b>7,902,272</b>	<b>7,515,728</b>	<b>7,733,441</b>	<b>30,724,186</b>
<b>F</b>	<b>Arketimet e muajit aktual (000/leke)</b>	<b>G=F.1+F.2+F.3+F.4</b>	<b>6,859,193</b>	<b>6,664,376</b>	<b>7,719,627</b>	<b>6,995,838</b>	<b>28,239,034</b>
F.1	Arketuar per faturat korrente te vitit aktual		4,772,679	4,569,541	4,836,203	4,689,433	18,867,856
F.3	Arketuar per faturat e tjera te vitit aktual		20,757	13,611	1,871,879	1,853,400	3,759,647
F.4	Arketuar per faturat e tjera te viteve te kaluara		2,065,757	2,081,224	1,011,546	453,004	5,611,531
<b>F.1</b>	<b>Arketimet e muajit aktual (%)</b>	<b>F.1+F/E</b>	<b>90.6%</b>	<b>84.3%</b>	<b>102.7%</b>	<b>90.5%</b>	<b>91.9%</b>
F.1.1	Arketuar per faturat korrente te vitit aktual (%)	F.1.1+F.1/E	63.0%	57.8%	64.3%	60.6%	61.4%
F.1.3	Arketuar per faturat e tjera te vitit aktual (%)	F.1.3+F.3/E	0.3%	0.2%	24.9%	24.0%	12.2%
F.1.4	Arketuar per faturat e tjera te viteve te kaluara (%)	F.1.4+F.4/E	27.3%	26.3%	13.5%	5.9%	18.3%
<b>G</b>	<b>Faturuar muaji Raportues (000/leke)</b>		<b>7,902,272</b>	<b>7,515,728</b>	<b>7,857,071</b>	<b>6,432,950</b>	<b>29,708,022</b>
<b>1</b>	<b>Nr. Konsumatoreve gjithsej (Nr.)</b>		<b>1,280,126</b>	<b>1,283,027</b>	<b>1,284,215</b>	<b>1,285,355</b>	<b>1,285,355</b>
<b>2</b>	<b>Fatura te emetuara me lexim konsumi (Nr.)</b>		<b>967,388</b>	<b>985,832</b>	<b>990,066</b>	<b>992,115</b>	<b>3,935,401</b>
<b>3</b>	<b>Sasia e energjise se faturuar me lexim konsumi (MWh)</b>						
<b>4</b>	<b>Fatura te emetuara me lexim "0" (Nr.)</b>		<b>316,389</b>	<b>291,426</b>	<b>288,450</b>	<b>298,695</b>	<b>1,194,960</b>
<b>5</b>	<b>Nr.Faturave te emetuara pa lexim (energji e pa matur) (Nr.)</b>						
<b>6</b>	<b>Sasia e energjise se faturuar si energji e pamatur (MWh)</b>						
<b>7</b>	<b>Nr.Faturave te emetuara pa lexim (dem ekonomik) (Nr.)</b>		<b>359</b>	<b>138</b>	<b>144</b>	<b>93</b>	<b>734</b>
<b>8</b>	<b>Sasia e faturuar si dem ekonomik (MWh)</b>		<b>2,130</b>	<b>3,676</b>	<b>1,769</b>	<b>1,051</b>	<b>8,626</b>
<b>9</b>	<b>Nr.Faturave per te cilat eshte arketuar kamat vonese (Nr.)</b>		<b>345,557</b>	<b>333,648</b>	<b>411,043</b>	<b>380,846</b>	<b>1,471,094</b>
<b>10</b>	<b>Vlera e Kamat vonesave te arketuara (000/leke)</b>		<b>67,504</b>	<b>58,047</b>	<b>77,908</b>	<b>85,768</b>	<b>289,227</b>

## SHENIM

\* Sipas raportimeve te OSHEE Group sha, faturuar nga OSSH sha si dem Ekonomik

Burimi: OSSH sha; FSHU sha; FTL sha; (OSHEE Group sha)

<b>BILANCI ENERJITIK I FTL sha, FSHU SHA DHE OSSH sha PER 4-MUJORIN 2022 (MWh)</b>			
1	ENERGJI TOTALE E HYRE NE RRJETIN E OSSH-se	2+3+7.6	<b>2,685,806</b>
2	Energji e shitur nga KESH sha per FSHU sha		1,723,779
3	<b>ENERGJI NE HYRJE E BLERE NGA FTL (OSHEE sha)</b>	<b>3.1+3.2+3.3</b>	<b>954,055</b>
3.1	Blere nga Prodhimi i PPE në rrjet		410,334
3.2	Blere nga Prodhimi i PPE në rrjet		487,354
3.3	Blere ne Treg të Liberalizuar nga		56,154
3.4	Energji nga Tec Ballsh		213
4	<b>ENERGJI NE DALJE E SHITUR NGA FTL (OSHEE sha)</b>	<b>4.1+4.2+4.3+4.4+4.5</b>	<b>954,055</b>
4.1	Energji nga FTL per FSHU		291,474
4.2	Energji nga FTL për humbjet OSSH		654,030
4.4	Energji e shitur nga FTL ne treg te liberalizuar		8,551
4.5	Eksport i FTL		0
5	<b>ENERGJI NE HYRJE PER FSHU (OSHEE sha)</b>	<b>2+4.1</b>	<b>2,015,253</b>
5.1	Energji Faktike nga KESH sha per FSHU sha	2	1,723,779
5.2	Energji nga FTL per FSHU	4.1	291,474
6	<b>ENERGJI NE DALJE PER FSHU (OSHEE sha)</b>	<b>6.1 deri 6.14</b>	<b>2,015,254</b>
6.1	Shitur Klienteve te Sherbimit Universal		1,660,457
6.11	Shitur klient		1,214,401
6.12	Shitur klient		360,808
6.13	Shitur klient		69,894
6.14	Shitur klient		15,354
6.2	Shitur Klienteve të mundesisë së Fundit		<b>345,958</b>
6.21	Shitur Klienteve FMF P		3,078
6.22	Shitur Klienteve FMF J		4,566
	Shitur Kl. FMF 20/10/6		338,315
6.30	<b>* Faturuar si dem Ekonomik</b>		<b>8,626</b>
6.40	<b>Energji e shitur nga N/St Tec Ballshi</b>		<b>213</b>
7	<b>ENERGJI QE KALON NE RRJETIN E OSSH-se</b>	<b>4.2+2+4.1+7.4+7.5+7.6+7.7</b>	<b>2,867,779</b>
7.1	Energji nga FTL për humbjet OSSH		654,030
7.2	Energji Faktike nga KESH sha per FSHU sha		1,723,779
7.3	Energji nga FTL per FSHU		291,474
7.4	Energjia e ngitur ne rrjetin e transmetimit nga centralet e lidhura ne rrjetin e OSSH		181,973
7.5	Energji e furnizuar nga FTL për Kliente ne treg të liberalizuar (ne rrjetin e OSSH)		8,551
7.6	Energji vetem per tu transmetuar tek klientet ne treg te liberalizuar (ne rrjetin e OSSH)		8,185
7.7	Energji nga Tec Ballsh		-213
8	<b>Humbje totale ne rrjetin e OSSH-se ( %)</b>	<b>7.1 x 100 / 7</b>	<b>22.81</b>

SHENIM

\*Sipas raportimeve të OSHEE grup faturuar si dëm ekonomik

**Burimi: OSSH sha; FSHU sha; FTL sha; (OSHEE Group sha)**

### Balanci i Energjisë Elektrike për vitin 2022

OST sha	Njësia e Matjes	Janar	Shkurt	Mars	Prill	Progresive 2022 [MWh]
	MWh					
Prodhimi nga KESH GEN në Rrjetin e Transmetimit	1	414,833	282,804	367,149	185,113	<b>1,249,899</b>
Prodhimi nga HEC/HPP e vogla në Rrjetin e Transmetimit	2	29,707	29,382	26,664	96,219	<b>181,973</b>
Prodhimi nga PPE/IPP e mëdha në Rrjetin e Transmetimit	3	85,752	75,786	64,481	179,932	<b>405,952</b>
Prodhimi nga HEC Peshqesh	4	11,761	10,920	6,352	16,041	<b>45,075</b>
Prodhimi nga HEC Banja	5	25,378	18,054	19,225	19,924	<b>82,582</b>
Prodhimi nga HEC FANG	6	35,654	21,085	16,488	29,410	<b>102,636</b>
Prodhimi nga HEC Moglicë	7	60,844	43,509	38,469	37,505	<b>180,328</b>
Prodhimi nga HEC Ashta	8	24,126	18,089	21,780	18,191	<b>82,186</b>
Prodhimi nga KURUM (Ulez-Shkopet&Bistrica1,2)	9	48,716	23,309	33,750	46,642	<b>152,416</b>
Eksporti (-) nga Linjat e Interkonjeksionit	D	152,329	78,525	142,301	154,761	<b>527,917</b>
Importi (+) nga Linjat e Interkonjeksionit	R	192,108	239,364	283,751	126,652	<b>841,875</b>
Balanca (Total Interkonjeksioni)	11=(R-D)	-39,779	-160,839	-141,450	28,109	<b>313,959</b>
Energjia Totale në Marrje	12=(1+2+3+4+5+6+7+8+9+10+R)	#REF!	#REF!	#REF!	#REF!	#REF!
Humbjet në Rrjetin e Transmetimit (përfshirë Nevojat Vetjake)	13	17,792	14,697	15,237	24,525	<b>72,252</b>
Humbjet në Rrjetin e Transmetimit %	14=13/12	#REF!	#REF!	#REF!	#REF!	#REF!
Energjia Totale në Dhënie	15=(12-13)	#REF!	#REF!	#REF!	#REF!	#REF!
<i>Transmetuar në Linjat e Interkonjeksionit</i>	16=D	152,329	78,525	142,301	154,761	<b>527,917</b>
<i>Transmetuar tek Klientët e Kualifikuar</i>		42,911	62,366	75,227	86,590	<b>267,094</b>
<i>EL220-L220KURUM/337</i>		1,769	21,948	32,655	32,693	<b>89,065</b>
<i>F.Arrez-T3/653</i>		-	-	-	-	-
<i>Titan T1,T2</i>		7,960	9,448	10,809	10,544	<b>38,760</b>
<i>FUSHE KRUIJE 220kV-T2/058</i>		-	-	-	4,264	<b>4,264</b>
<i>N/ST 220/6,3Colacent-T1/336</i>		426	1,353	782	1,481	<b>4,042</b>
<i>N/ST i GSA EL 110kV-T1/694</i>		-	-	-	-	-
<i>N/ST i GSA EL 110kV-T2/960</i>		17,703	15,919	16,128	16,518	<b>66,267</b>
<i>N/ST I CWI Albania T1/148</i>		-	-	-	0.30	<b>0</b>
<i>N/ST i AES EL 110kV-T1/690</i>		7,188	5,203	2,147	7,076	<b>21,615</b>
<i>N/ST I AES EL 110kV-T2/692</i>		233	1,413	5,072	7,054	<b>13,771</b>
<i>HEC Moglice T1,T2,T3</i>		3	2	3	1	<b>9</b>
<i>HEC Peshqesh-T1/633</i>		9	7	29	0.57	<b>46</b>
<i>Lajthiza T1/742</i>		328	472	184	13	<b>997</b>
<i>HEC Ashta1-T1,HEC Ashta2-T1,</i>		0.09	-	-	0.01	<b>0</b>
<i>HEC Banje T1,T2</i>		14	17	19	16	<b>66</b>
<i>HEC Fang-T1,T2,</i>		32	24	39	16	<b>111</b>
<i>Gjenerim KURUM</i>		0.13	16	10	3.07	<b>29</b>
<i>TEC Ballsh-T1/598</i>		71	61	66	15	<b>213</b>
<i>FERRO KROM-F1,F2,F3,F4</i>		7,247	6,545	7,349	6,912	<b>28,052</b>
<i>Transmetuar në rrjetin e Shpërndarjes</i>		<b>715,776</b>	<b>606,653</b>	<b>645,278</b>	<b>489,739</b>	<b>2,457,445</b>
<i>Transmetuar në rrjetin e Shpërndarjes 110 kV</i>		617,507	523,533	559,503	427,177	<b>2,127,718</b>
<i>Transmetuar në rrjetin e Shpërndarjes 35 kV</i>		51,767	45,806	47,343	32,236	<b>177,152</b>
<i>Transmetuar në rrjetin e Shpërndarjes 6, 10, 20 kV</i>		46,502	37,314	38,432	30,327	<b>152,575</b>

Burimi: OST sha

**TË DHËNA MBI TRANSMETIMIN E ENERGJISË ELEKTRIKE NGA OPERATORI I SISTEMIT TE TRANSMETIMIT NË SHQIPËRI PËR 4-Mujorin e VITIT 2022 (MWh)**

	Janar	Shkurt	Mars	Prill	2022		
<b>HYRJE</b>	Dhene nga H/C e KESH ne rrjetin e Transmetimit	414,833	282,804	367,149	185,113	1,249,899	<b>3,324,920</b>
	Dhene nga H/C e me perparesi ne rrjetin e Transmetimit	85,752	75,786	64,481	179,932	405,952	
	Energji nga Hec-et Lokale levruar ne Rrjetin e Transmetimit (me ngritje)	29,707	29,382	26,664	96,219	181,972	
	Gjenerim KURUM (prodhues i pavarur)	48,716	23,309	33,750	46,642	152,417	
	HEC ASHTA (prodhues i pavarur Kontr.me OSHEE)	24,126	18,089	21,780	18,191	82,186	
	HEC BANJE (prodhues i pavarur)	25,378	18,054	19,225	19,924	82,581	
	HEC MOGLICE (prodhues i pavarur)	60,844	43,509	38,469	37,505	180,327	
	HEC PESHQESH-T1/637 (prodhues i pavarur)	11,761	10,920	6,352	16,041	45,074	
	HEC FANGU (prodhues i pavarur)	35,654	21,085	16,488	29,410	102,637	
	Importi(Hyre) nga Linjat e Interkonjeksionit	192,108	239,364	283,751	126,652	841,875	
<b>DALJE</b>	Humbjet ne Transmetim	17,792	14,697	15,237	24,525	72,251	<b>#####</b>
	Transmetuar ne Rrjetin e Shperndarjes	715,776	606,653	645,278	489,739	2,457,446	
	Klientene treg te hapur (TL) (+Tec Ballsh)	42,982	62,427	75,293	86,605	267,307	
	Eksporti (Dale) nga Linjat e Interkonjeksionit	152,329	78,525	142,301	154,761	527,916	

Humbjet ne Transmetim	17,792	14,697	15,237	24,525	72,251
Humbjet ne Transmetim ne %	1.92	1.93	1.74	3.25	2.17

**Burimi: OST sha**

<b>PRODHIMI NETO NE SHQIPERI</b>	<b>Janar</b>	<b>Shkurt</b>	<b>Mars</b>	<b>Prill</b>	<b>Progresivi 2022</b>
<b>Prodhimi Neto KESH sha.</b>	414,833	282,804	367,149	185,113	<b>1249899.04</b>
<b>Hec-et Private dhe Konc. (Rrjeti Shperndarjes)</b>	83,068	74,132	74,479	156,218	<b>387896.27</b>
<b>Hec-et Private dhe Konc. (Rrjeti Transmetimit)</b>	85,752	75,786	64,481	179,932	<b>405951.82</b>
<b>HEC Ashta</b>	24,126	18,089	21,780	18,191	<b>82186.33</b>
<b>Prodhimi Neto Hec Lanabregas</b>	2,465	2,172	2,273	2,451	<b>9361.64</b>
<b>Prodhimi Neto (Hec Ulez,Shkopet,Bistrica 1,2)</b>	48,716	23,309	33,750	46,642	<b>152416.08</b>
<b>Prodhimi Hec Peshqesh</b>	11,761	10,920	6,352	16,041	<b>45074.51</b>
<b>Prodhimi Hec Fangu</b>	35,654	21,085	16,488	29,410	<b>102636.18</b>
<b>Prodhimi Hec Banja</b>	25,378	18,054	19,225	19,924	<b>82581.30</b>
<b>Prodhimi Hec Moglica</b>	60,844	43,509	38,469	37,505	<b>180327.14</b>
<b>Prodhimi i Centraleve Fotovoltaike</b>	2,482	2,881	3,626	4,086	<b>13074.63</b>
<b>ENERGJIA NETO E PRODHUAR NE SHQIPERI</b>	795,079	572,741	648,072	695,514	<b>2711404.96</b>

<b>ENERGJI NGA INTERKONEKSIONI</b>					
<b>Energji ne dhenie nga Interkoneksioni</b>	152,329	78,525	142,301	154,761	<b>527916.64</b>
<b>Energji ne marrje nga Interkoneksioni</b>	192,108	239,364	283,751	126,652	<b>841875.35</b>
<b>Ballanca Hyrje/Dalje nga Interkoneksioni (hyrje)</b>	39,779	160,839	141,450	-28,109	<b>313958.71</b>

<b>KONSUMI I ENERGJISE NE SHQIPERI</b>	
<b>Konsumi i klientëve Tarifore</b>	<b>1660457.00</b>
<b>Konsumi i klientëve të furnizuar si FMF</b>	<b>345958.00</b>
<b>*Shitur klienteve si dem ekonomik</b>	<b>8626.00</b>
<b>Konsumi i Klientëve që përdorin rrjetin për energjine e blerë ne treg të liberalizuar</b>	<b>8185.00</b>
<b>Energji për Klientet ne treg të liberalizuar lidhur në OSSH me furnizues FTL</b>	<b>8551.00</b>
<b>Konsumi për mbulimin e humbjeve</b>	<b>654030.00</b>
<b>Konsumuar nga Klientet e lidhur në OST</b>	<b>267094.00</b>
<b>Konsumuar nga OST (humbje +nevoja vetiake)</b>	<b>72252.00</b>
<b>Konsumuar Tec Ballshi</b>	<b>213.00</b>
<b>KONSUMI TOTAL 2022 (4-mujori)</b>	<b>3025366.00</b>

Burimi: OST sha; KESH sha; OSSH sha; FSHU sha; FTL sha; (OSHEE Group sha)

PRODHIMI GJATE VITIT 2022 NGA CENTRALET E LIDHURA NE RRJETIN E TRANSMETIMIT (MWh)									
HECET DHE KAPACITETI	MW	SUBJEKTI	LIDHJA	JANAR	SHKURT	MARS	PRILL	2022	
Hec "Fierze" me fuqi 500 MW	500.000	"KESH" sha	220 kV	414,833	282,804	367,149	185,113	1,249,899	
Hec "Koman" me fuqi 600 MW	600.000		220 kV						
Hec "V. Dejes" me fuqi 250 MW	250.000		220 kV						
Hec Vlorë me fuqi 98 MW	98.000		220 kV						
									1,249,899
Hec "Ulez" me fuqi 25.2 MW	25.200	"Kurum International" sh.a.	110 kV	48,716	23,309	33,750	46,642	152,416	
Hec "Shkopet" me fuqi 24 MW	24.000		110 kV						
Hec "Bistrica 1" me fuqi 22.5 Mw	22.500		110 kV						
Hec "Bistrica 2" me fuqi 5 Mw	5.000		110 kV						
Hec "Peshqesh" me fuqi 27.94 MW;	27.940	"Ayen As Energji" sha	220 kV	11,761	10,920	6,352	16,041	45,075	
Hec "Fangu" me fuqi 74.6 MW;	74.600		220 kV						
Hec "Banje" me fuqi 73 MW	73.000		110 kV						
Hec "Moglice" me fuqi 184 MW	184.000		111 kV						
Hec Qami-l	1.730	"Lajthiza Invest" shpk		0	0	34	750	784	
									563,819
Hec "Ashta" me fuqi 48.2 MW	48.200	"Energji Ashta" shpk	110 kV	24,126	18,089	21,780	18,191	82,186	
									82,186
Hec "Bishnica 2" me fuqi 2.5 MW	2.500	"HEC Bishnica 1.2" shpk	110 kV	784	924	786	2204	4,698	
Hec "Dardhe" me fuqi 5.8 MW	5.800	"Wenerg" shpk	110 kV	1,597	1,292	848	3979	7,716	
Hec "Truen" me fuqi 2.5 MW	2.500	"TRUEN" shpk	110 kV						
Hec "Ternove" me fuqi 8.385 Mw	0.921	"TEODORI 2003" shpk	110 kV	601	531	551	1,010	2,692	
Hec "Gjorice" me fuqi 4.18 Mw (+h/c ne prodhim)	29.610	"DITEKO" shpk	110 kV	13,819	8,667	9,509	16,552	48,547	
Hec "Sllabinje" me fuqi 13.8 MW	13.800	"Power Elektrik Sllabinje" shpk	110 kV	5,283	5,365	5,446	13,423	29,517	
Hec "Bele 1" me fuqi 5 MW ;	5.000	"Euron Energy" shpk	110 kV	10,267	10,501	9,118	18,437	48,323	
Hec "Topojan 2" me fuqi 5.8 MW.	5.800								
Hec "Bele 2" me fuqi 11 MW ;	11.000								
Hec "Topojan 1" me fuqi 2.9 MW.	2.900								
Hec "Orgjost I Ri" me fuqi 4.8 MW;	4.800	"Energal" shpk							
Hec "Cerunje-1" me fuqi 2.3 MW;	2.300	"Energy partners Al" shpk	110 kV	865	624	591	4253	6,333	
Hec "Cerunje-2" me fuqi 2.8 MW;	2.800								
Hec "Rrupe" me fuqi 3.6 MW;	3.600	"C & S Construction Energy" shpk	110 kV	2,988	2,581	2,079	5127	12,774	
Hec "Rapuni 1.2" me fuqi 4 dhe 4.1 MW	8.100								
Hec "Rapuni 3.4" me fuqi 8.857 MW	8.850								
Hec "Llapaj" me fuqi 13.62 MW	13.620								
Hec "Lengarice" me fuqi 8.94 MW	8.940	"Lengarica & Energy" shpk	110 kV	3,298	3,152	3,914	4844	15,208	
Hec "Lura 1" me fuqi 6.34 MW	6.540	"Erdat Lura" shpk	110 kV	3,470	3,495	2,288	9005	18,258	
Hec "Lura 2" me fuqi 4.02 MW	4.020								
Hec "Lura 3" me fuqi 5.66 MW	5.660								
Hec "Malla" me fuqi 5.455 MW	5.455	"Gjure Rec" shpk	110 kV	1,262	1,320	911	2857	6,350	
Hec Prella me fuqi 14.97 MW	14.970	"Prelle Energji"	110 kV	3,363	3,619	2,122	8019	17,124	
HEC Cemerica 1	0.88	"REJ ENERGY" shpk	110 kV	1,238	1,178	1,275	3201	6,893	
HEC Cemerica 2	1.08								
HEC Cemerica 3	2.1								
HEC TUÇ	4.47	MC Inerte Lumzi	110 kV	2,068	3,385	1,362	6055	12,870	
HEC Lumzi	11								
Hec Denas	14.5	"Denas Power" shpk	110 kV	2,904	3,033	3,342	8080	17,360	
Llënga 1	1.73	"HEC LLËNGË" sh.p.k	110 kV	745	493	522	1945	3,705	
Llënga 2	0.3								
Llënga 3	1.5								
HEC Shpella Poshte 2	2.3	Liria Energji shpk	110 kV	752	660	677	2737	4,825	
HEC Germani 1	4.8	SA'GA-MAT shpk	110 kV	1,188	1,155	718	2440	5,502	
HEC Germani 2	1.5								
Hec Lashkiza 1	4.076	HEC Lashkiza shpk	110 kV	684	371	313	1121	2,489	
Hec Lashkiza 2	0.882								
Hec Seta 1+2	7.454	"Hydro Seta" sh.p.k	110 kV	3,023	2,103	1,928	8421	15,475	
Hec Seta 3	2.722								
Hec Seta 4	4.724								
HEC Darsi 1,2,3	12.7								
HEC Egnatia	5.1	REMI shpk	110 kV	930	660	606	2983	5,178	
HEC Seka & Zais/684	14.96	SEKA Hydropower shpk	110 kV	6,637	6,191	4,160	11052	28,040	
HEC ARSTI	3.13	Hec Arsti shpk	110 kV	1,494	1,484	1,063	2403	6,445	
HEC KASKADA GJADER T1/344	24.9	S.P.E. Gjader shpk	110 kV	2,459	2,493	1,022	4232	10,207	
HEC-et Dragobia&Ceremi/686	21.9	Dragobia Energy shpk	110 kV	5,147	2,754	2,634	12435	22,971	
HEC Veleshica 1,2	13.9	"Kalisi Hydropower" shpk	110 kV	890	606	599	4168	6,262	
				2,266	85,752	75,786	64,448	179,183	405,168

PRODHIMI GJATE VITIT 2022 NGA CENTRALET E LIDHURA NE RRJETIN E SHPERNDARJES (MWh)									
HECET DHE KAPACITETI	MW	SUBJEKTI	LIDHJA	JANAR	SHKURT	MARS	PRILL	2022	
Hec "Lanabregas" me fuqi 5 MW	5.000	"Hec Lanabregas" sha	35	2,465	2,172	2,273	2,451	9,362	
Hec "Lenie" me fuqi 400 kW	0.400	"EMIKEL 2003" sh.p.k	10kV	229	199	211	244	883	
Hec "Corovode" me fuqi 200 kW	0.200		10kV	63	68	69	104	303	
Hec "Smokthine" me fuqi 9.2 MW	9.200	"Albania Green Energy" sh.p.k	35 kV	4,312	3,133	3,358	3,253	14,056	
Hec "Bulqize" me fuqi 0,6 MW (Diber)	0.600	"Balkan Green Energy" shpk	10kV	107	80	76	204	468	
Hec "Homesh" me fuqi 0,395 MW (Diber)	0.395		10kV	-	52	39	47	138	
Hec "Zerqan" me fuqi 0,625 MW (Diber)	0.625		6kV	100	99	118	116	433	
Hec "Arras" me fuqi 4,8 MW (Diber)	4.800		20kV	1,788	1,343	1,118	2,490	6,740	
Hec "Orgjost" me fuqi 1,2 MW (Kukes)	1.200		10kV	542	532	511	703	2,287	
Hec "Lekbibaj" me fuqi 1,4 MW (Tropoje)	1.400		10kV	693	529	598	745	2,565	
Hec "Dukagjin" me fuqi 0,64 MW (Shkoder)	0.640		10kV	146	142	164	134	586	
Hec "Marjan" me fuqi 0,2 MW (Korce)	0.200		10kV	-	-	-	-	-	
Hec "Lozhan" me fuqi 0,1 MW (Korce)	0.100		10kV	37	52	66	83	238	
Hec "Barmash" me fuqi 0,83 MW (Kolonje)	0.830		10kV	252	180	221	246	899	
Hec "Treske 2" me fuqi 0,25 MW (Korce)	0.250		10kV	113	88	97	121	420	
Hec "Nikolice" me fuqi 0,7 MW (Korce)	0.700		10kV	175	70	76	226	547	
Hec "Funares" me fuqi 1,92 MW (Librazhd)	1.920		10kV	818	686	732	690	2,927	
Hec "Lunik" me fuqi 0,2 MW (Librazhd)	0.200		10kV	136	101	116	129	483	
Hec "Kerpice" me fuqi 0,42 MW (Gramsh)	0.420		6kV	52	39	45	67	204	
Hec "Ujanik" me fuqi 0,63 MW (Skrapar)	0.630		10kV	174	86	64	235	559	
Hec "Borsh" me fuqi 0,25 MW (Sarande)	0.250	6kV	121	91	116	110	437		
Hec "Leshnice" me fuqi 0,38 MW (Sarande)	0.380	10/6kV	32	87	91	69	279		
Hec "Velcan" me fuqi 1,2 MW (Korce)	1.200	10kV	322	299	358	632	1,610		
Hec "Muhur" me fuqi 0,25 MW (Diber)	0.250	6kV	92	76	98	71	338		
Hec "Rajan" me fuqi 1,02 MW (Kolonje)	1.020	10kV	457	294	409	478	1,639		
Hec "Lure" me fuqi 0,75 MW (Diber)	0.750	10kV	-	-	-	14	14		
Hec "Gjanç" me fuqi 2,96 MW	2.960	"Spahiu Gjanç" sh.p.k.	35 kV	-	-	-	1,119	1,119	
Hec "Bogove" me fuqi 2,5 MW	2.500	"Wonder power" sha	35 kV	366	428	400	1,422	2,616	
Hec "Xhyre" me fuqi 570 kW	0.570	"Amal" sh.p.k	10kV	206	176	193	254	829	
Hec "Stranik" me fuqi 4,6 MW	4.600	"Hidroinvest 1" shpk	35kV	1,387	1,479	1,443	2,641	6,950	



Hec "Zall Tore" me fuqi 3 MW	3.000	"Hidroenergji" shpk	35kV	1,235	1,322	1,361	1,976	5,894
Hec "Klos" me fuqi 1,95 MW	1.950	"Malido-Energji" shpk	6kV	374	236	194	612	1,417
Hec "Borje" me fuqi 1.5 MW	1.500	"HIDROALBANIA Energji" shpk	35kV	1,170	1,067	1,112	3,542	6,890
Hec "Cernaleve" me fuqi 2,95 MW	2.950	"HIDROALBANIA Energji" shpk	35kV	461	461	430	1,951	3,303
Hec "Cernaleve 1" me fuqi 3,27 MW	3.270	"HIDROALBANIA Energji" shpk	35kV	502	502	452	2,179	3,635
Hec "Murdarh 1" me fuqi 2,68 MW	2.680	"HydroEnergy" shpk	10kV	983	912	1,229	1,856	4,980
Hec "Murdarh 2" me fuqi 1 MW	1.000	"HydroEnergy" shpk	10kV	544	478	709	1,093	2,824
Hec "Dishnice" me fuqi 0.2 MW	0.200	"Dishnica Energy" shpk	10kV	67	61	88	122	338
Hec "Lubonje" me fuqi 0.3 Mw	0.300	"Elektro Lubonje" shpk	10kV	74	64	64	154	356
Hec "Peshke" me fuqi 3,43 MW	3.430	"Koka & Ergi Energy Peshk" shpk	35kV	1,076	850	743	2,174	4,844
Hec "Labinot -Mal" me fuqi 0.25 MW	0.250	"Ansara Koncension" shpk	6kV	40	32	35	45	153
Hec "Pobreg" me fuqi 12,3 MW	12.300	"Energy Plus" shpk	35kV	3,533	3,461	2,989	6,732	16,716
Hec "Vlushe" me fuqi 14,2 MW	14.200	"Hec Vlushe" shpk	35kV	2,304	3,432	2,849	8,098	16,683
Hec "Belesova 1" me fuqi 0.150 MW	0.150	"Korkis 2009" shpk	6kV	16	30	29	26	101
Hec "Faqekuq 1,2" me fuqi (3 MW; 3,4 MW)	6.400	"HP OSTROVICA" shpk	35kV	863	734	840	3,719	6,157
Hec "Shemri" me fuqi 1 MW	1.000	"Erald Energjitik" shpk	10kV	344	385	241	680	1,650
Hec "Mgulle" me fuqi 0.28 MW	0.280	"Erald Energjitik" shpk	10kV	249	230	218	268	965
Hec "Kryezi 1" me fuqi 0.6 Mw	0.600	"Bekim Energjitik" shpk	10kV	310	405	227	565	1,507
Hec "Selishte" me fuqi 2 MW	2.000	"Selishte" shpk	35kV	592	468	356	1,069	2,486
Hec "Carshove" me fuqi 1.5 Mw	1.500	"ERMA MP" shpk	10kV	302	325	531	504	1,661
Hec "Ura e Dashit" me fuqi 1,2MW	1.200	"ERMA MP" shpk	10kV	928	1,124	1,502	1,688	5,242
Hec "Gizavesh" me fuqi 0.5 MW	0.500	"Dosku Energy" shpk	10kV	301	304	299	322	1,226
Hec "Koka 1" me fuqi 3,2 MW	3.200	"Snow Energy" shpk	35kV	485	200	204	1,663	2,552
Hec "Stravaj" me fuqi 3,6 MW	3.600	"Stravaj Energji" shpk	35kV	1,153	1,291	1,251	2,428	6,123
Hec "Picar 1" me fuqi 0,2 MW	0.200	"Peshku Picar 1" shpk	6kV	99	69	57	47	273
Hec "Vertop" me fuqi 1,52 Mw	1.520	"Hydro Salillari Energy" shpk	35kV	222	217	266	321	1,026
Hec "Martanesh" me fuqi 10,5 MW	10.500	"Albanian Power" shpk	35kV	1,495	1,178	1,074	3,856	7,603
Hec "Verba 1,2" me fuqi (2 MW; 3 MW)	5.000	"Hydro power Plant Of Korca" shpk	35kV	432	280	337	1,918	2,967
Hec "Fierra" me fuqi 1,08 MW	1.080	"Hidro Borshi" shpk	35kV	958	954	1,024	806	3,742
Hec "Ostren i Vogel" me fuqi 0,32 MW	0.320	"Lu & Co Eco Energy" shpk	10kV	84	77	87	110	357
Hec "Kozel" me fuqi 0,5 MW	0.500	"Kozel" shpk	10kV	115	81	127	145	468
Hec "Helmes 1" me fuqi 0,8 MW	0.800	"E.T.H.H." shpk	10kV	258	207	232	522	1,219
Hec "Helmes 2" me fuqi 0,5 MW	0.500	"E.T.H.H." shpk	10kV	134	85	96	270	586
Hec "Qafezeze" me fuqi 0,4 MW	0.400	"Caushi Energji" shpk	10kV	450	395	427	525	1,797
Hec "Trebisht" me fuqi 1,775 MW	1.775	"SA.GLE.Kompani" shpk	10kV	420	289	158	1,041	1,909
Hec "Mollaj" me fuqi 0,6 MW	0.600	"Energji Khaci" shpk	10kV	59	68	95	172	394
Hec "Tucep" me fuqi 0,4 MW	0.400	"Tucep" shpk	10kV	275	247	276	280	1,078
Hec "Treska4" me fuqi 3,6 MW	3.600	"Treska4" shpk	35kV	1,079	932	953	1,701	4,666
Hec "Treska3" me fuqi 0,3 MW	0.300	"Hec-Treske" shpk	35kV	143	115	137	218	613
Hec "Treska 2T" 5 me fuqi 0,62 MW	0.620	"Hec-Treske" shpk	35kV	294	246	262	424	1,225
Hec "Sotire 1 & 2" me fuqi 2,2 MW	2.200	"Hidro Energy Sotire" shpk	35kV	432	307	254	922	1,914
Hec "Shutine" me fuqi 2,4 MW	2.400	"Shutine energji" shpk	10kV	364	363	202	608	1,537
Hec "Cekrez 1,2" me fuqi (0,23 MW; 0,43 MW)	0.660	"Zall Herr Energji 2011" shpk	6kV	386	333	347	332	1,398
Hec "Qarr" me fuqi 1 MW	1.000	"Hec Qarr & Kaltani" shpk	35kV	682	400	446	783	2,312
Hec "Bisak" me fuqi 1,3 MW	1.300	"Bardhgjana" shpk	6kV	513	155	334	699	1,700
Hec "Shales" me fuqi 1,08 MW	1.080	"Gjoka Konstruksion Energji" shpk	35kV	-	-	13	-	13
Hec "Strelce" me fuqi 1,174 MW	1.174	"Gjoka Konstruksion Energji" shpk	35kV	583	348	418	1,241	2,591
Hec "Shpelle" me fuqi 400 kW	0.400	"Sarolli" sh.p.k	10kV	102	82	88	309	580
Hec "Treska 1" me fuqi 130 kW	0.130	"Star NRG" sh.p.k	10kV	-	-	-	-	-
Hec "Bicaj" me fuqi 3,1 MW	3.100	"EN-KU" sh.p.k	10kV	-	-	-	-	-
Hec "Leskovik 1" me fuqi 1072 kW	1.072	"Maksi Elektrik" sh.p.k	10kV	50	44	46	48	189
Hec "Leskovik 2" me fuqi 1100 kW	1.100	"Maksi Elektrik" sh.p.k	10kV	62	52	56	58	228
Hec "Orenje" me fuqi 875 kW	0.875	"Juana" sh.p.k	10kV	178	107	86	161	532
Hec "Tamarë" me fuqi 750 kW	0.750	"WTS Energji" shpk	10kV	-	-	-	-	-
Hec "Bene" me fuqi 1000 kW	1.000	"Marjakaj" shpk	6kV	180	157	167	195	699
Hec "Vithkuq" me fuqi 2,715 MW	2.715	"Favina 1" shpk	35/10kV	1,611	867	997	1,626	5,100
Hec "Selce" me fuqi 1600 kW	1.600	"Selca Energji" shpk	10kV	349	343	450	685	1,828
Hec "Kumbull- Merkurth" me fuqi 0,83 Mw	0.830	"DN & NAT Energy" shpk	6kV	127	81	54	445	707
Hec "Sasaj" me fuqi 8,6 MW	8.600	"Energjo - Sas" shpk	35kV	2,678	2,275	2,665	2,345	9,963
Hec "Tervol" me fuqi 10,6 MW	10.600	"Hec i Tervoli" shpk	35kV	2,331	3,156	2,484	6,391	14,362
Hec "Radove" me fuqi 2,5 MW	2.500	"MTC Energy" shpk	10kV	1,155	745	1,125	1,250	4,275
Hec "Gurshpat 1" me fuqi 0,84 MW,	0.840	"Gurshpat Energy" shpk	10kV	433	298	296	547	1,574
Hec "Gurshpat 2" me fuqi 0,83 MW	0.830	"Gurshpat Energy" shpk	10kV	507	365	371	681	1,923
Hec "Bistrica 3" me fuqi 1,57 MW,	1.570	"Bistrica 3 Energy" shpk	6kV	846	842	901	647	3,236
Hec "Hurdhas 1" me fuqi 1,71MW,	1.710	"Komp Energji" shpk	6kV	1,090	1,024	1,375	2,091	5,579
Hec "Perrollaj" me fuqi 0,5 MW	0.500	"Fatum" shpk	10kV	80	63	70	167	381
Hec "Koxheraj" me fuqi 0,62 MW	0.620	"Koxherri Energji" shpk	10kV	139	121	128	219	607
Hec "Kacni" me fuqi 3,87 MW	3.870	"Kisi-Bio-Energji" shpk	20kV	529	59	115	1,429	2,133
Hec "Lena 1" me fuqi 1,95 MW,;	1.950	"Gama Energy" shpk	35kV	-	-	-	-	-
Hec "Lena 2" me fuqi 2,3 MW	2.300	"Gama Energy" shpk	35kV	387	300	421	1,804	2,911
Hec "Lena 2A" me fuqi 0,25 MW	0.250	"Gama Energy" shpk	35kV	-	-	-	-	-
Hec "Driza" me fuqi 3,408 MW	3.408	"Mesopotam Energy" shpk	35kV	434	324	371	280	1,410
Hec Strelca 1,2,3 (1.504 MW, 0.325 MW, 3.52 MW)	5.349	"Strelca Energy" shpk	35kV	969	683	812	3,079	5,544
Hec "Ujanik 2" me fuqi 2,5 MW	2.500	"HP Ujaniku Energy" shpk	35kV	506	500	361	1,018	2,386
Hec "Nishove" me fuqi 1,36 MW	1.360	"Nishova Energy" shpk	35kV	82	48	98	73	301
Hec "Shtika" me fuqi 1,3 MW	1.300	"Perparimi SK" shpk	10kV	273	377	529	400	1,579
Hec "Ballenje" me fuqi 1,9 MW	1.900	"Ballenja Power Martanesh" shpk	35kV	249	145	164	943	1,501
Hec Gavran 1	0.998	"Gavran Energy" shpk	35kV	359	265	242	661	1,527
Hec Gavran 2	1.215	"Gavran Energy" shpk	35kV	240	138	132	610	1,119
Hec Kasollet e Selces 1	4.000	"Xhango Energji" shpk	35kV	977	762	941	2,269	4,949
Hec Holta Kabash	2.200	HEC Kabash Porocan shpk	35kV	965	1,313	1,102	2,089	5,469
Hec Holta Porocan	3.300	HEC Kabash Porocan shpk	35kV	-	-	-	-	-
Hec Lusen 1	0.315	"Eurobiznes" shpk	35kV	47	34	37	153	271
Hec Ura e Fanit	1.000	"Ayen As Energji" sha	35kV	549	467	458	513	1,987
HEC Gorice	1.747	"THE BLUE STAR" sh.p.k	35kV	411	368	423	1,132	2,334
HEC Kabash 1&2	5.800	"Univers Energji" shpk	35kV	446	-	773	1,047	2,266
HEC "Tucep 2"	1.7	"DUKA T2" shpk	35kV	285	258	380	363	1,287
Hec Dobrenje Tomorrice	2.4	DAAB Energy Group shpk	35kV	326	301	385	462	1,474
Hec Razzoll	0.765	Hidro Vizion shpk (I pa licens nga ERE)	35kV	135	57	76	478	746
Hec Dragostunje	3.1	"HEC-i Dragostunje" shpk	35kV	1,034	1,891	1,115	4,348	8,388
Hec Stebleve	3.4	"PURE ENERGY STEBLEVA" shpk	35kV	180	163	84	617	1,044

Hec Zerec 1	0.55	"EnRel Hydro" shpk	35kV	492	502	520	1,061	2,574
Hec Zerec 2	1.315							
Hec Shëngjon 1	0.651	"EDIANI" sh.p.k.	35kV	252	162	125	435	975
Hec Shëngjon 2	0.356							
HEC Blaç	1.3	"BLAC ENERGY" sh.p.k	35kV	-	-	-	-	-
HEC Qarrishtë	0.3	"IDI-2005" SHPK	35kV	120	62	48	174	404
HEC Vendresh	0.456	"HP VENDRESH ENERGY" SHPK	35kV	33	53	95	49	229
HEC "Antena"	1.105	"DERBI-E" shpk	35kV	273	260	164	622	1,319
HEC "Kamenicë"	0.973	HP Kamenica shpk	10	473	217	306	641	1,637
HEC "Qytezë"	0.9	Muso hec Qytezë	10	242	185	275	463	1,165
HEC Marjan Gura e Vesheve	0.63	Marituda Shpk	10	94	38	40	258	430
HEC Skatinë	2.677	Skatina Hec Shpk	10	680	554	590	988	2,812
HEC Kaparjel	0.2	ABV Konstruksion Shpk	10	38	52	57	53	200
HEC Letaj	0.54	Asi-Tre Shpk	10	69	62	62	156	349
HEC Nice	2.133	MP-HEC Shpk	35	188	231	293	587	1,299
HEC Meshurdhe	1.8	SIMA-Com Shpk	10	807	783	458	1,094	3,141
HEC Thanez	1.95	AFRIMI K Shpk	35	840	1,036	606	1,295	3,777
HEC OSOJE	1.9	OSOJA HPP shpk	35	1,393	1,087	1,224	1,412	5,117
Hec Voskopoje	1.9	FAVINA 1 shpk	35	888	797	999	1,124	3,809
Hec Nderfushas	1.34	SGD Energji shpk	35	132	80	87	513	811
Hec Rreshen	0.38	Nikolli Energy shpk	10	129	113	106	151	498
Hec Gurra	0.5	Uleza Ndertim shpk	6	123	94	99	90	406
Hec Vile	1.994	Hydro Power Panaritit shpk	35	552	598	573	1,153	2,876
Hec Dukona	0.800	Dukona shpk	20	58	71	108	96	332
Hec Prevalli	1.750	Gega-G shpk	35	957	564	487	1,220	3,228
HEC Camerice	0.800	Rei Energy shpk	35	688	306	399	818	2,211
Hec Storr	2.000	Era Hydro shpk	35	830	1,094	940	2,017	4,882
Hec Mivas	1.940	Elva 2001 shpk	35	488	707	621	964	2,780
Hec Spathare	1.038	Lucente concensionare shpk	10	650	303	318	628	1,899
Hec Miraka	0.600	Kuarci Blace shpk	10	68	98	79	207	452
Hec Shegjum	2.000	Irarba Energji shpk	10	145	145	204	358	852
hec Dobrunje	0.840	W.T.S. Energji shpk	10	191	167	219	433	1,010
Hec Muras	2	Mateo& Co shpk	10	616	656	540	1,324	3,136
Hec Trojet	0.9	Trojjet Energji shpl	10	211	232	215	356	1,014
Hec Deni	0.85	ASI TRE shpk	35	104	123	84	333	644
Hec Kamican	1.86	IGI 2005 shpk	35	818	596	558	1,349	3,322
Hec Vardar	1.97	Gerti shpk	35	1,252	649	684	1,658	4,243
Hec Stavec	6.5	Koka Ergi Stavec shpk	35	3,014	2,095	1,830	5,005	11,944
Hec Kalis	2.13	ERDY Energy shpk	35	1,053	919	571	1,024	3,566
Hec Gjinar	0.83	Erdi Gas shpk	10	107	101	105	223	535
Hec Backa 1	3.36	Kroi Mbret shpk	35	1,090	1,202	1,269	2,440	6,000
Hec Plepi	2.28	Domii Tec shpk	35	83	36	74	574	767
Hec Zall Xhuxhe	4.7	Hec Zall Xhuxhe	35	639	513	359	1,327	2,838
Hec Pisha	1.9	Green TECH energy systems	35	189	-	104	249	541
Hec Lingjanca1&2	2.2	"Rei-Energji"shpk	35	551	630	616	796	2,593
Hec Guri i Zi	1.7	"Aris Albania"shpk	35	37	39	58	574	708
Hec Drita		"Brecani R.O.S.P." shpk	20	-	720	568	1,039	2,327
Hec Terfori				-	-	-	199	199
	<b>318</b>			<b>85,532</b>	<b>76,304</b>	<b>76,752</b>	<b>158,670</b>	<b>397,258</b>

PRODHIMI GJATE VITIT 2022 NGA CENTRALET FOTOVOLTAIKE TË LIDHURA NE RRJETIN E SHPERNDARJES (MWh)									
CENTRAL FOTOVOLTAIK		MW	SUBJEKTI	LIDHJA	JANAR	SHKURT	MARS	PRILL	2022
UKKO (pa sistemuarne sistem)	1	"UKKO"sha (Ujsjell.Kanal.Korce)							
Seman – 2	2	"SEMAN2SUN" sh.p.k	35 kV	234.22	273.49	353.08	397.74		1,258.53
Topojë	2	"SONNE" sh.p.k	35 kV	232.33	272.37	353.43	396.13		1,254.26
Topojë 2	2	"AED SOLAR" sh.p.k	35 kV	239.26	280.49	362.88	406.63		1,289.26
Topojë (Sheq Marinas)	2	"AGE SUNPOWER" sh.p.k	35 kV	230.65	271.04	351.96	395.50		1,249.15
Topojë (Sheq Marinas) 2	2	"SEMAN SUNPOWER" sh.p.k	35 kV	247.38	290.01	371.63	415.87		1,324.89
Seman Isolar	2	"SEMANISOLAR" sh.p.k	35 kV	247.73	283.01	357.56	394.38		1,282.68
FV Lugano	2	ES 2019 sh.p.k	35 kV	274.31	312.06	395.27	435.28		1,416.92
FV SMART WATT	2	SMART WATT sh.p.k	35 kV	273.82	310.19	392.86	432.48		1,409.35
Tren Bilisht	2	"RTS" sh.p.k	35 kV	250.54	247.35	324.83	349.27		1,172.00
STATKRAFT Renewbles albani PV Lundrues banje	2	"STATKRAFT"	35 kV	-	-	-	64.30		64.30
Plug, Lushnje	2	"AEE" sh.p.k	10 kv	251.70	341.10	362.40	398.10		1,353.30
	<b>23</b>			<b>2,481.95</b>	<b>2,881.11</b>	<b>3,625.90</b>	<b>4,085.67</b>		<b>13,074.63</b>

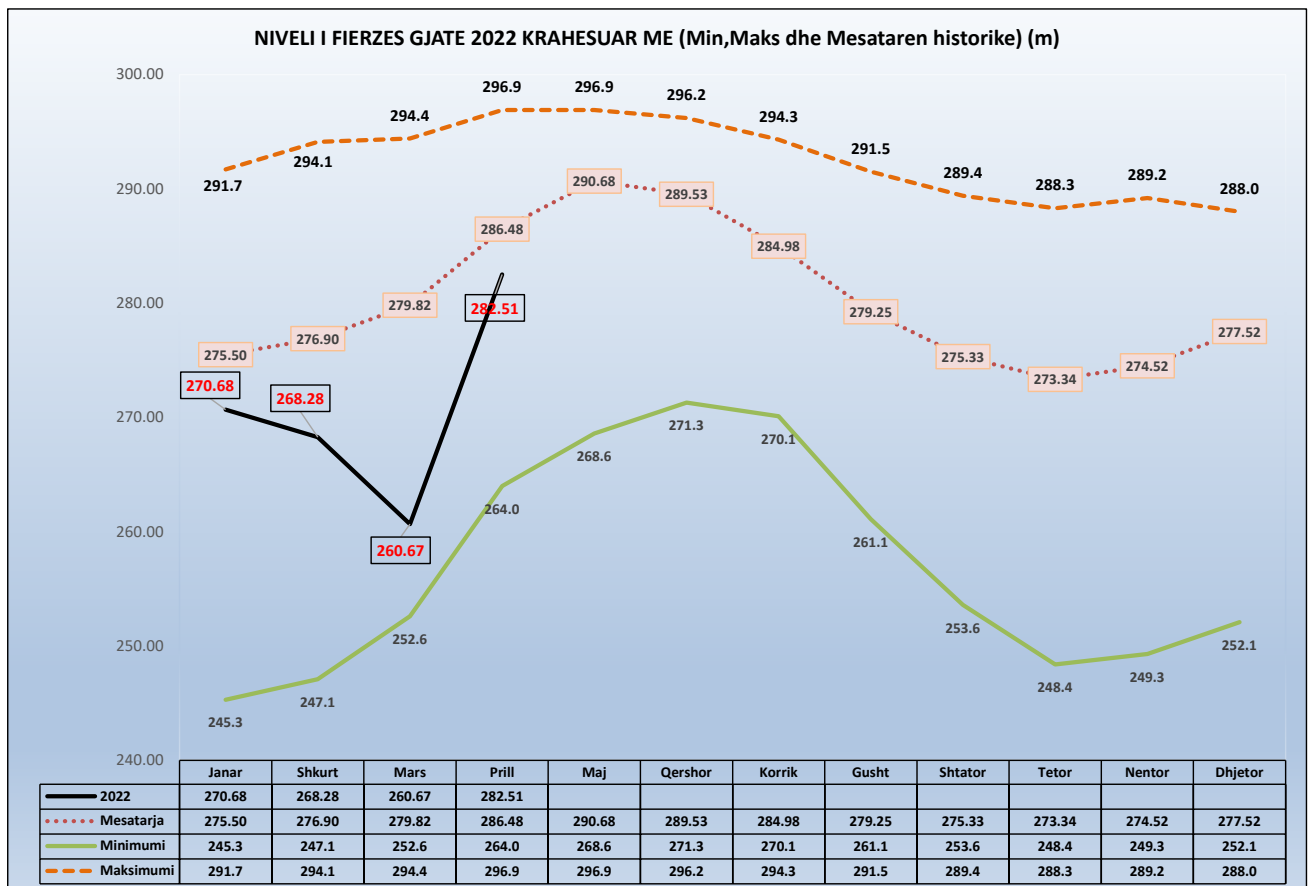
Kapaciteti Instaluar i gjithe prodhuesve **2,607** MW

**2,711,406**

Burimi: OST sha; KESH sha; OSSH sha; FTL sha; (OSHEE Group sha)

	NIVELI I FIERZES 1991-2022											
	Janar	Shkurt	Mars	Prill	Maj	Qershor	Korrik	Gusht	Shtator	Tetor	Nentor	Dhjetor
1991	254.4	260.8	268.6	279.9	293.4	296.1	294.0	291.5	289.4	288.3	288.8	285.1
1992	278.0	274.1	268.0	278.8	281.0	279.6	275.2	268.7	263.9	271.4	281.9	280.6
1993	275.2	265.3	264.7	278.5	280.5	277.3	271.0	261.1	253.6	249.9	255.6	270.2
1994	254.4	260.8	268.6	279.9	293.4	296.1	294.0	291.5	289.4	288.3	288.8	285.1
1995	253.8	260.3	262.5	275.3	289.0	288.7	284.5	282.2	288.2	283.8	279.9	287.5
1996	287.1	288.7	286.5	294.7	295.8	293.1	287.6	282.2	285.1	284.3	289.2	291.3
1997	289.4	284.5	281.7	285.2	294.1	292.0	287.0	280.0	272.9	272.4	270.8	277.2
1998	273.7	270.0	265.2	278.9	288.1	287.4	281.8	277.6	276.0	277.1	279.0	277.1
1999	272.7	275.6	281.5	290.5	295.9	293.3	288.3	279.5	271.0	257.6	263.6	276.9
2000	276.4	276.7	276.8	286.9	286.6	280.1	273.5	267.5	261.6	248.4	249.3	252.1
2001	253.6	258.2	275.1	282.9	287.6	283.8	273.7	271.1	269.2	263.6	263.2	252.1
2002	245.3	247.1	252.6	264.0	268.6	271.3	270.1	267.8	274.3	286.1	285.3	284.0
2003	291.1	289.5	286.3	287.0	292.3	290.3	285.9	280.8	276.0	282.6	285.6	283.3
2004	284.7	290.8	293.4	296.0	296.2	296.2	293.1	286.3	281.1	280.0	286.1	288.0
2005	281.2	281.5	293.3	296.1	295.6	294.1	286.7	277.2	266.5	256.9	253.6	279.0
2006	283.5	288.6	294.4	295.9	296.5	295.9	293.8	290.2	285.3	278.7	266.2	256.2
2007	256.1	263.7	272.0	276.8	276.8	274.8	268.5	263.6	261.8	261.1	275.8	282.1
2008	285.1	289.7	290.9	295.5	295.3	295.7	294.3	288.6	283.9	280.9	285.2	286.5
2009	283.6	281.8	283.4	292.5	293.7	292.4	288.0	281.2	276.2	271.6	266.3	280.1
2010	290.1	289.2	293.9	296.0	296.3	294.4	291.8	288.6	284.9	285.2	284.3	287.5
2011	281.6	274.4	275.0	276.6	281.0	286.1	284.7	279.0	273.9	268.2	261.6	264.5
2012	265.8	267.7	262.0	280.2	293.4	294.4	288.4	280.4	261.4	261.6	269.0	276.6
2013	278.3	281.5	294.8	296.9	296.9	294.2	289.7	283.6	280.8	281.4	282.5	276.1
2014	275.1	277.5	274.6	285.3	292.9	294.9	291.7	286.8	285.5	285.0	284.8	286.3
2015	288.7	289.4	292.2	296.3	296.1	293.3	287.5	280.1	272.1	275.4	278.9	275.9
2016	289.9	292.4	291.8	296.5	296.2	295.6	290.5	285.4	283.3	288.4	288.9	281.6
2017	271.5	277.7	280.9	278.7	281.6	272.4	270.2	268.0	271.0	264.6	269.6	289.9
2018	289.7	292.0	295.0	296.5	296.4	296.0	294.0	287.5	277.9	270.2	266.5	267.3
2019	267.3	268.2	272.7	279.9	289.9	292.7	287.6	278.5	274.2	268.6	273.2	275.6
2020	271.62	271.98	283.50	288.55	293.6	291.7	284.6	276.5	273.5	274.1	268.7	272.7
2021	291.70	294.10	292.60	294.30	296.7	291.7	282.7	274.3	271.3	267.7	267.8	275.1
2022	270.68	268.28	260.67	282.51								

	Janar	Shkurt	Mars	Prill	Maj	Qershor	Korrik	Gusht	Shtator	Tetor	Nentor	Dhjetor
2022	270.68	268.28	260.67	282.51								
Mesatarja	275.50	276.90	279.82	286.48	290.68	289.53	284.98	279.25	275.33	273.34	274.52	277.52
Minimumi	245.3	247.1	252.6	264.0	268.6	271.3	270.1	261.1	253.6	248.4	249.3	252.1
Maksimumi	291.7	294.1	294.4	296.9	296.9	296.2	294.3	291.5	289.4	288.3	289.2	288.0

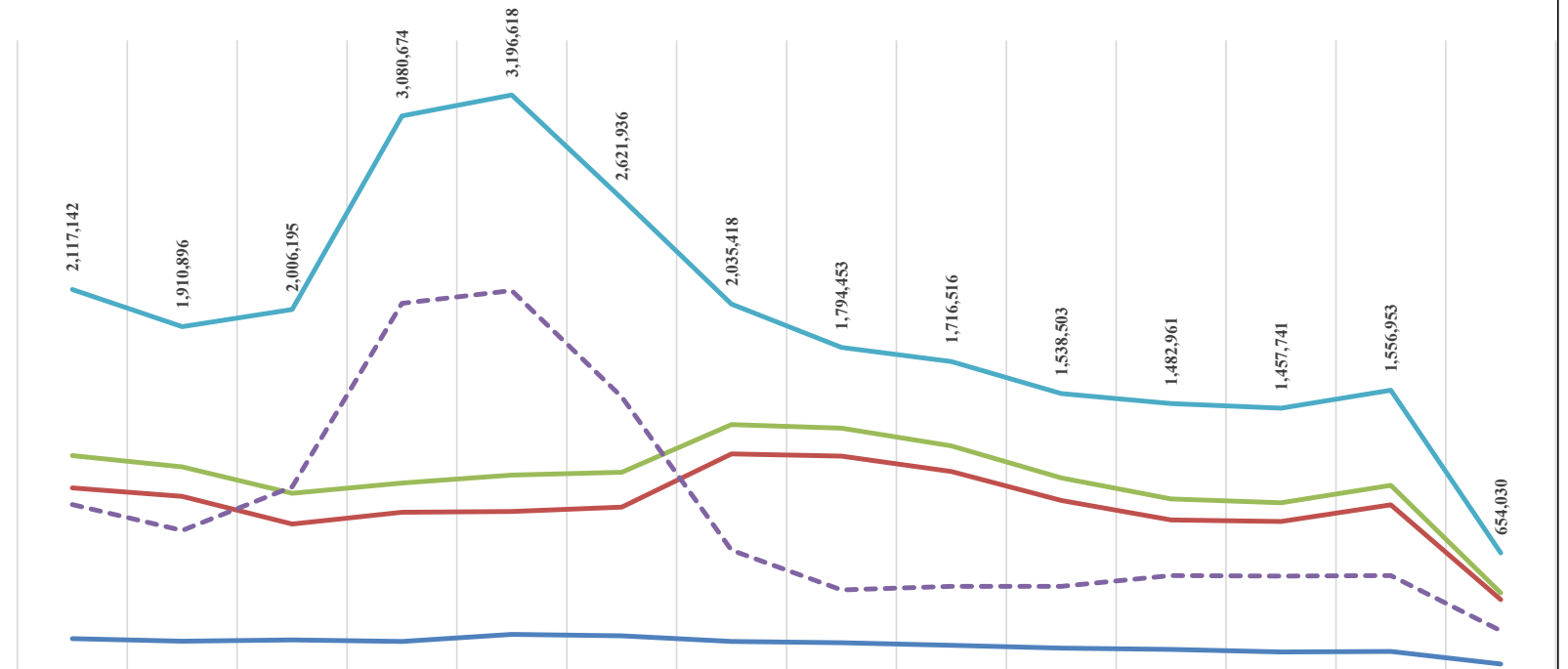




### HUMBJET NE RRJETIN E SHPERNDARJES 2009-2022 (MWh)

	2009	2010	2011	2012	2013	2014	2015	2016	2017	2018	2019	2020	2021	2022 (4-Mujori)
HUMBJE TEKNIKE NE TL (N/ST)	178,738	163,546	170,937	161,831	201,684	193,208	162,725	155,629	141,707	125,974	117,739	103,729	107,340	37,213
HUMBJE TEKNIKE NE ZONAT E OSSH	1,015,450	968,535	814,826	879,616	884,360	908,416	1,203,793	1,190,872	1,106,007	944,587	836,561	828,906	921,330	394,924
TOTALI I HUMBJEVE TEKNIKE OSSH	1,194,188	1,132,081	985,763	1,041,447	1,086,044	1,101,624	1,366,518	1,346,501	1,247,714	1,070,560	954,300	932,635	1,028,670	432,137
HUMBJE JOTOKNIKE OSSH	922,954	778,815	1,020,432	2,039,227	2,110,575	1,520,312	668,900	447,952	468,802	467,943	528,661	525,106	528,283	221,893
TOTALI I HUMBJEVE OSSH	2,117,142	1,910,896	2,006,195	3,080,674	3,196,618	2,621,936	2,035,418	1,794,453	1,716,516	1,538,503	1,482,961	1,457,741	1,556,953	654,030

### HUMBJET NE RRJETIN E SHPERNDARJES 2009-2022 (MWh)



	2009	2010	2011	2012	2013	2014	2015	2016	2017	2018	2019	2020	2021	2022 (4-Mujori)
HUMBJE TEKNIKE NE TL (N/ST)	178,738	163,546	170,937	161,831	201,684	193,208	162,725	155,629	141,707	125,974	117,739	103,729	107,340	37,213
HUMBJE TEKNIKE NE ZONAT E OSSH	1,015,450	968,535	814,826	879,616	884,360	908,416	1,203,793	1,190,872	1,106,007	944,587	836,561	828,906	921,330	394,924
TOTALI I HUMBJEVE TEKNIKE OSSH	1,194,188	1,132,081	985,763	1,041,447	1,086,044	1,101,624	1,366,518	1,346,501	1,247,714	1,070,560	954,300	932,635	1,028,670	432,137
HUMBJE JOTOKNIKE OSSH	922,954	778,815	1,020,432	2,039,227	2,110,575	1,520,312	668,900	447,952	468,802	467,943	528,661	525,106	528,283	221,893
TOTALI I HUMBJEVE OSSH	2,117,142	1,910,896	2,006,195	3,080,674	3,196,618	2,621,936	2,035,418	1,794,453	1,716,516	1,538,503	1,482,961	1,457,741	1,556,953	654,030

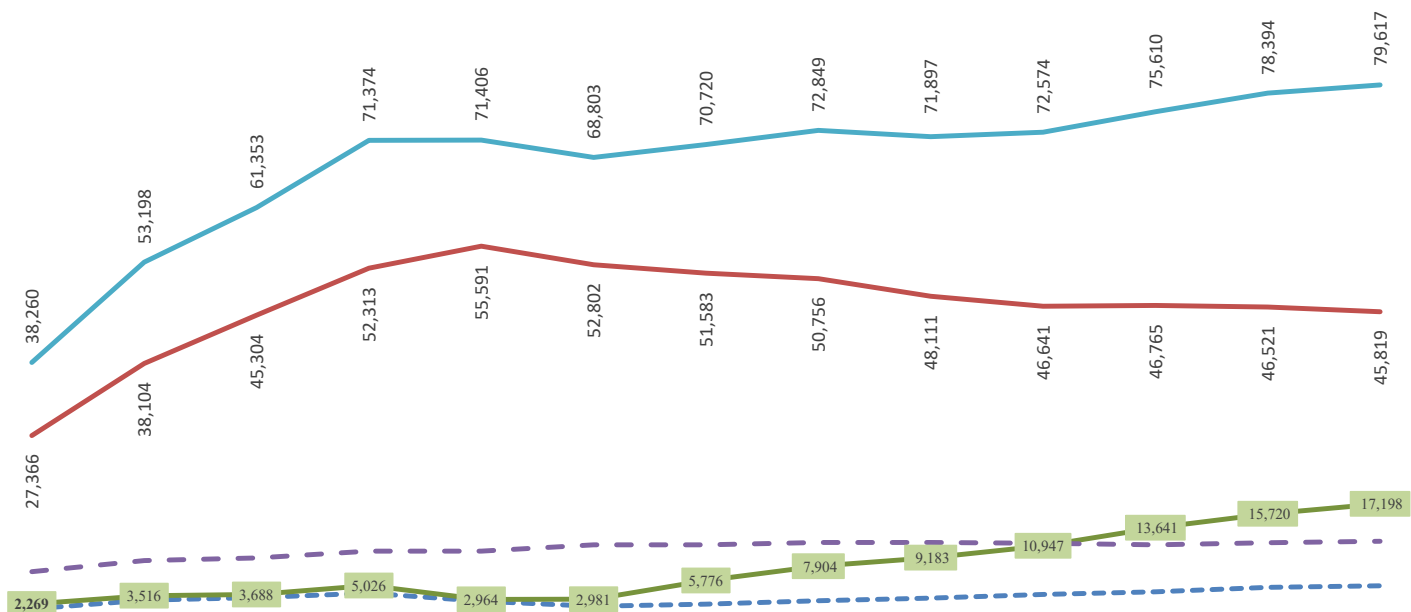
Burimi: OSSH sha / (OSHEE Group sha)





ECURIA E GJENDJES DEBITORE NDAJ OSHEE 31 DHJETOR 2009 - 31 Mars 2022 ( 000 000 LEKË)														
	31.12.2009	31.12.2010	31.12.2011	31.12.2012	31.12.2013	31.12.2014	31.12.2015	31.12.2016	31.12.2017	31.12.2018	31.12.2019	31.12.2020	31.12.2021	30.04.2022
<b>Buxhetore</b>	988	1,538	2,841	3,223	3,886	2,691	1,915	2,264	2,741	3,157	3,681	4,104	4,761	4,982
<b>Familjare</b>	18,953	27,366	38,104	45,304	52,313	55,591	52,802	51,583	50,756	48,111	46,641	46,765	46,521	45,819
<b>JoBuxhetore</b>	2,468	2,269	3,516	3,688	5,026	2,964	2,981	5,776	7,904	9,183	10,947	13,641	15,720	17,198
<b>Privat</b>	4,033	7,086	8,738	9,138	10,149	10,161	11,105	11,098	11,447	11,446	11,304	11,100	11,393	11,618
<b>Total</b>	26,442	38,260	53,198	61,353	71,374	71,406	68,803	70,720	72,849	71,897	72,574	75,610	78,394	79,617

ECURIA E GJENDJES DEBITORE NDAJ OPERATORIT TE SHPERNDARJES  
31 DHJETOR 2009 - 30 PRILL 2022 SIPAS KLIENTËVE  
( 000 000 LEKË)

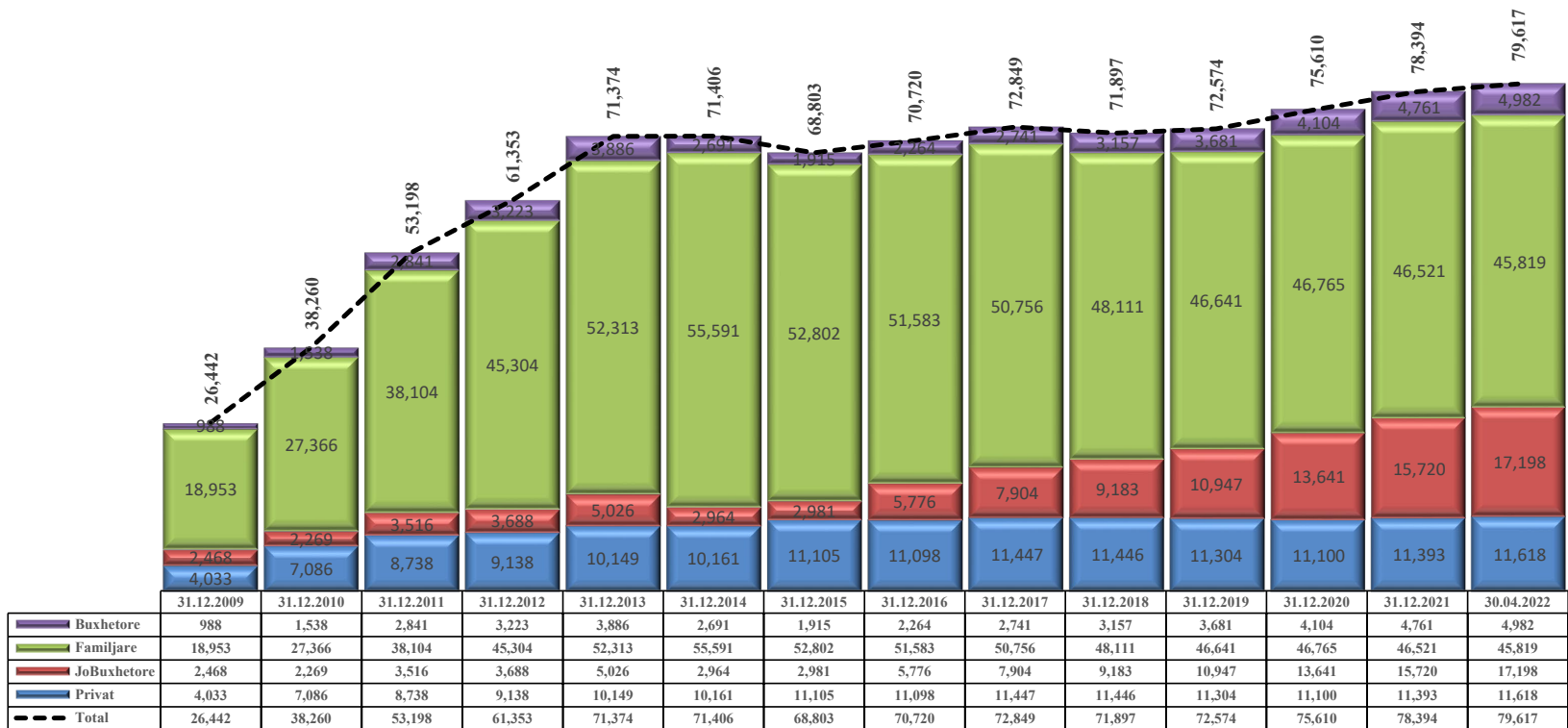


	31.12.2010	31.12.2011	31.12.2012	31.12.2013	31.12.2014	31.12.2015	31.12.2016	31.12.2017	31.12.2018	31.12.2019	31.12.2020	31.12.2021	30.04.2022
<b>Buxhetore</b>	1,538	2,841	3,223	3,886	2,691	1,915	2,264	2,741	3,157	3,681	4,104	4,761	4,982
<b>Familjare</b>	27,366	38,104	45,304	52,313	55,591	52,802	51,583	50,756	48,111	46,641	46,765	46,521	45,819
<b>JoBuxhetore</b>	2,269	3,516	3,688	5,026	2,964	2,981	5,776	7,904	9,183	10,947	13,641	15,720	17,198
<b>Privat</b>	7,086	8,738	9,138	10,149	10,161	11,105	11,098	11,447	11,446	11,304	11,100	11,393	11,618
<b>Total</b>	38,260	53,198	61,353	71,374	71,406	68,803	70,720	72,849	71,897	72,574	75,610	78,394	79,617



	31.12.2009	31.12.2010	31.12.2011	31.12.2012	31.12.2013	31.12.2014	31.12.2015	31.12.2016	31.12.2017	31.12.2018	31.12.2019	31.12.2020	31.12.2021	30.04.2022
<b>Privat</b>	4,033	7,086	8,738	9,138	10,149	10,161	11,105	11,098	11,447	11,446	11,304	11,100	11,393	11,618
<b>JoBuxhetore</b>	2,468	2,269	3,516	3,688	5,026	2,964	2,981	5,776	7,904	9,183	10,947	13,641	15,720	17,198
<b>Familjare</b>	18,953	27,366	38,104	45,304	52,313	55,591	52,802	51,583	50,756	48,111	46,641	46,765	46,521	45,819
<b>Buxhetore</b>	988	1,538	2,841	3,223	3,886	2,691	1,915	2,264	2,741	3,157	3,681	4,104	4,761	4,982
<b>Total</b>	26,442	38,260	53,198	61,353	71,374	71,406	68,803	70,720	72,849	71,897	72,574	75,610	78,394	79,617

**ECURIA E GJENDJES DEBITORE NDAJ OPERATORIT TE SHPERNDARJES**  
**31 DHJETOR 2009 - 30 PRILL 2022 SIPAS KLIENTËVE**  
**( 000 000 LEKË )**

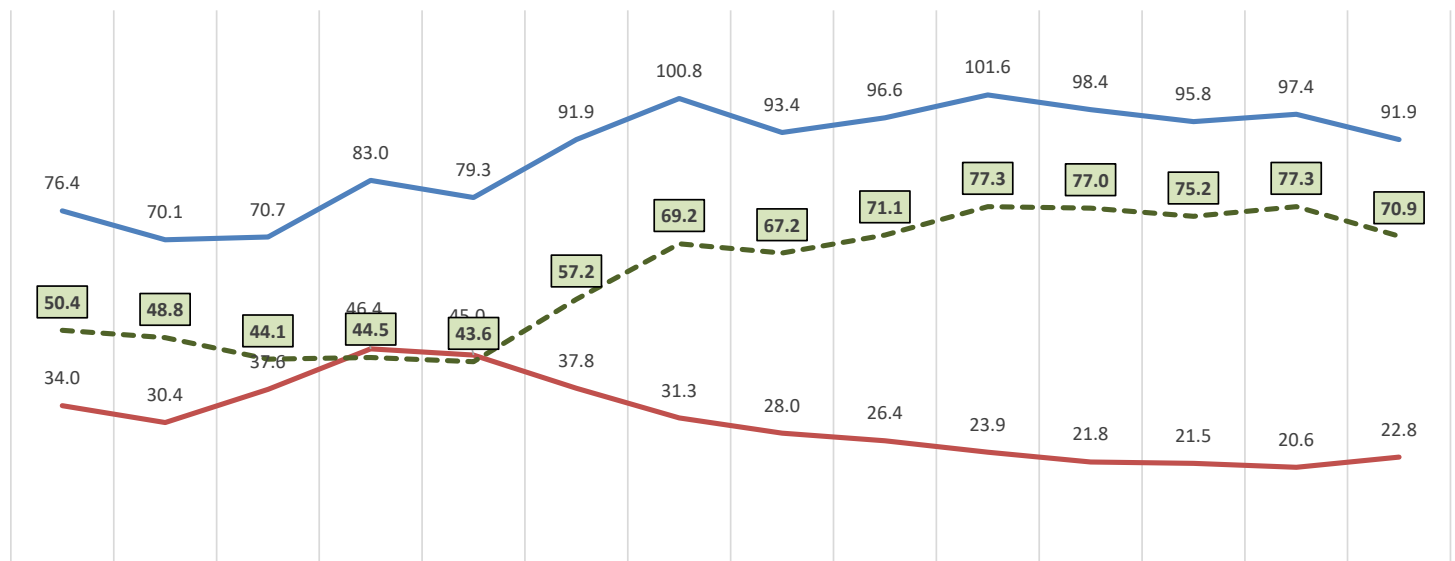


**Burimi: FSHU sha / (OSHEE Group sha)**



	2009	2010	2011	2012	2013	2014	2015	2016	2017	2018	2019	2020	2021	2022
Arketimi	76.4	70.1	70.7	83.0	79.3	91.9	100.8	93.4	96.6	101.6	98.4	95.8	97.4	91.9
Humbja	34.0	30.4	37.6	46.4	45.0	37.8	31.3	28.0	26.4	23.9	21.8	21.5	20.6	22.8
Efektiviteti	50.4	48.8	44.1	44.5	43.6	57.2	69.2	67.2	71.1	77.3	77.0	75.2	77.3	70.9

Efektiviteti i shitjeve ne Sistemin e Shperndarjes (%)  
2009-2022



	2009	2010	2011	2012	2013	2014	2015	2016	2017	2018	2019	2020	2021	2022
Arketimi	76.4	70.1	70.7	83.0	79.3	91.9	100.8	93.4	96.6	101.6	98.4	95.8	97.4	91.9
Humbja	34.0	30.4	37.6	46.4	45.0	37.8	31.3	28.0	26.4	23.9	21.8	21.5	20.6	22.8
Efektiviteti	50.4	48.8	44.1	44.5	43.6	57.2	69.2	67.2	71.1	77.3	77.0	75.2	77.3	70.9

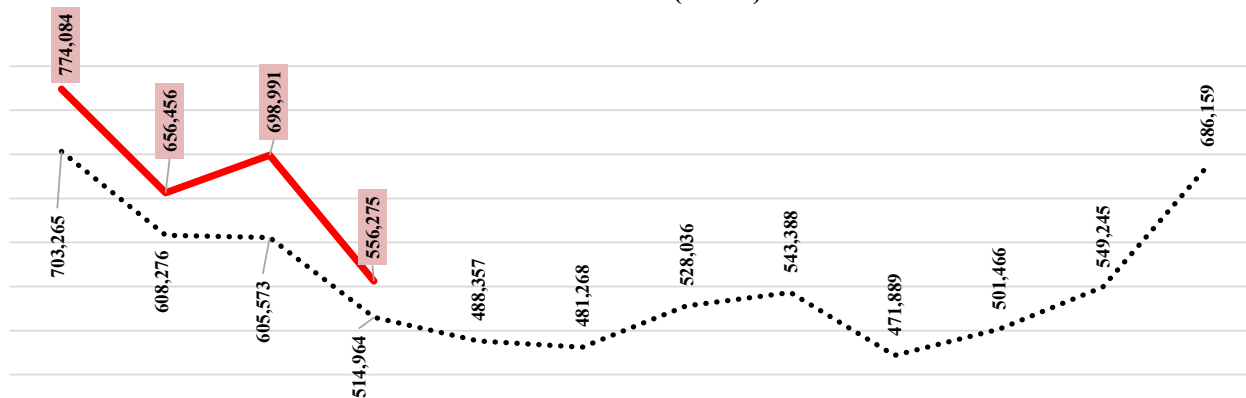
Burimi FSHU (OSHEE Group sha)

**Energji Totale ne Operatorin e Sistemit te Shperndarjes 2009-2021 ne MWh**

	Janar	Shkurt	Mars	Prill	Maj	Qershor	Korrik	Gusht	Shtator	Tetor	Nentor	Dhjetor	VITI
2009	644,987	568,719	589,279	462,709	448,118	427,694	467,863	493,772	439,604	489,635	557,554	639,797	6,229,731
2010	675,343	608,940	610,583	506,275	476,500	464,120	499,241	512,024	460,893	509,793	532,126	660,665	6,516,503
2011	708,264	623,208	634,087	536,286	533,564	495,139	545,315	567,282	512,979	551,132	619,655	710,870	7,037,781
2012	733,973	680,054	596,982	537,950	483,891	489,723	536,891	540,566	469,527	484,706	548,289	749,398	6,851,949
2013	743,846	665,392	673,578	545,600	502,945	511390	546,696	565,789	493,056	532,555	589,808	774,403	7,145,060
2014	733,468	631,678	645,837	578,948	541,016	501088	530,554	556,098	492,427	537,280	546,419	640,431	6,935,244
2015	686,041	591,978	594,775	514,282	472,405	465730	536160	529208	459012	476969	519281	649026	6,494,867
2016	671,884	559,772	573,419	469,803	477,468	463248	509916	514034	451153	480236	540024	688760	6,399,717
2017	715,886	562,270	545,214	493,731	475,055	485,386	529,805	543,145	451,103	482,629	546256	667841	6,498,322
2018	659,778	590,823	597,595	468,417	467,468	468,885	508,892	539,134	465,468	471,407	517,882	681,162	6,436,911
2019	735,813	586,992	559,331	500,485	501,061	500,729	533,842	565,788	471,684	472,833	507,920	639,953	6,576,432
2020	708,611	607,803	589,581	489,236	464,183	463,789	527,801	533,336	482,358	506,280	562,127	669,977	6,605,082
2021	724,554	629,962	662,183	590,810	504,970	519,563	591,485	603,872	485,288	523,606	552,840	747,790	7,136,936
2022	774,084	656,456	698,991	556,275									2,685,806

	Janar	Shkurt	Mars	Prill	Maj	Qershor	Korrik	Gusht	Shtator	Tetor	Nentor	Dhjetor
Mesatarja	703,265	608,276	605,573	514,964	488,357	481,268	528,036	543,388	471,889	501,466	549,245	686,159
2022	774,084	656,456	698,991	556,275								
Diferenca	70,819	48,180	93,418	41,311								

**MESATARJA 13 VJEÇARE E ENERGJISË TOTALE NË RRJETIN E SHPËRNDARJES  
SIPAS MUAJVE TË VITIT (MWh)**



	Janar	Shkurt	Mars	Prill	Maj	Qershor	Korrik	Gusht	Shtator	Tetor	Nentor	Dhjetor
..... Mesatarja	703,265	608,276	605,573	514,964	488,357	481,268	528,036	543,388	471,889	501,466	549,245	686,159
— 2022	774,084	656,456	698,991	556,275								

NR	KLIENTET NE TL	KLIENTET E "KUALIFIKUAR" PER VITIN 2022				
		Energjia e faturuar ne [MWh]				
		Janar	Shkurt	Mars	Prill	4-Muj2022
1	N/ST i GSA EL i ri 110kV-T1/694	0	0	0	0	0
2	N/ST i GSA EL 110kV-T2/960	17,703	15,919	16,128	16,518	66,267
3	TEC Ballsh	71	61	66	15	213
4	Titan T1,T2	7,960	9,448	10,809	10,544	38,760
5	FERROKROM	7,247	6,545	7,349	6,912	28,052
6	FUSHE KRUJE 220kV-T2/058	-	-	-	4,264	4,264
7	N/ST 220/6,3Colacent-T1 I RI/336	426	1,353	782	1,481	4,042
8	EL220-L220KURUM/338	1,769	21,948	32,655	32,693	89,065
9	Lajthiza T1/742	328	472	184	13	997
11	F.Arrez-T3/653	0	0			0
12	N/ST i AES EL 110kV-T1/690	7,188	5,203	2,147	7,076	21,615
13	N/ST I AES EL 110kV-T2/692	233	1,413	5,072	7,054	13,771
15	ENERGJI ASHTA ( ASHTA 1+2)	0.09	-	-	0.01	0
19	ENERGJI ULEZ ( ULEZ )	0.13	16	10	3.07	29
21	ENERGJI SHKOPET ( SHKOPET )	0	0	0	0	0
23	ENERGJI BISTRICE ( BISTRICE )	0	0	0	0	0
25	ENERGJI PESHQESH ( AYEN )	9	7	29	0.57	46
27	ENERGJI FANG ( AYEN )	32	24	39	16	111
29	ENERGJI BANJA ( DEVOLL HPP)	14	17	19	16	66
31	ENERGJI HEC MOGLICE ( DEVOLL HPP)	3	2	3	1	9
	Totali mujor	42,982	62,427	75,293	86,605	267,307

**Burimi: OST sha**

**Devijimet ne Programin e Interkoneksionit 2022 (MWh)**

*Minus = Hyrje*

*Plus = Dalje*

<b>Data</b>	Janar	Shkurt	Mars	Prill	Maj	Qershor	Korrik	Gusht	Shtator	Tetor	Nentor	Dhjetor	<b>2022</b>
1	-222	-135	-85	440									-2
2	3	-27	461	238									675
3	136	217	-338	-258									-243
4	-577	161	-62	-1851									-2,329
5	-131	-9	-561	-19									-721
6	137	327	-1124	-116									-776
7	-157	693	-573	276									239
8	-126	933	-277	254									784
9	4	-577	-294	585									-282
10	-425	-70	-157	237									-415
11	-61	272	-90	-266									-145
12	-343	564	-136	-109									-24
13	-52	180	-232	-92									-196
14	-429	297	346	223									437
15	332	64	413	449									1,258
16	-3	-148	41	348									239
17	-64	638	-6	363									931
18	133	447	-29	-226									325
19	-167	288	252	-94									279
20	-192	585	237	-448									182
21	174	1695	-73	-69									1,727
22	-102	862	-181	738									1,317
23	1014	338	311	278									1,942
24	-587	167	587	945									1,111
25	-836	21	575	237									-3
26	-418	-124	202	64									-276
27	-22	-686	583	-308									-434
28	28	229	-97	254									414
29	303		309	235									846
30	220		-103	323									440
31	51		430										481
<b>Total</b>	-2,381	7,203	328	2,630									7,781

**Burimi OST sha**

**Tabela me te dhenat e Alokimit te ATC 2022**

Ankandi	Periudha	Shqiperi - Mali Zi						Shqiperi - Greqi						Shqiperi - Kosove					
		ATC e ofruar ne Ankand		ATC e shitur ne Ankand		Cmimi Ankandit		ATC e ofruar ne Ankand		ATC e shitur ne Ankand		Cmimi Ankandit		ATC e ofruar ne Ankand		ATC e shitur ne Ankand		Cmimi Ankandit	
		Export	Import	Export	Import	Export	Import	Export	Import	Export	Import	Export	Import	Export	Import	Export	Import	Export	Import
		[ MW ]	[ MW ]	[ MW ]	[ MW ]	[ Euro/MWh ]	[ Euro/MWh ]	[ MW ]	[ MW ]	[ MW ]	[ MW ]	[ Euro/MWh ]	[ Euro/MWh ]	[ MW ]	[ MW ]	[ MW ]	[ MW ]	[ Euro/MWh ]	[ Euro/MWh ]
Janar	01.01.2022-31.01.2022	101	100	101	100	2.07	1.47	200	202	200	202	1.11	3.47	200	200	200	200	0.83	0.41
Shkurt	01.02.2022-28.02.2022	103	102	102	105	1.55	2.22	200	154	200	154	1.5	3.51	202	200	202	199	1.53	0.65
Mars	01.03.2022-31.03.2022	103	102	103	102	0.91	3.98	100	102	100	102	2.55	1.51	200	200	200	200	0.31	1.11
	102							107	102	107	0.84	0.79							
	2							4	0	2	0.84	0.79							
Prill	01.04.2022-03.04.2022	101	100	101	100	2.25	3.33	100	5	99	5	2.71	9.69	200	200	200	200	0.71	1.11
	04.04.2022-05.04.2022													50	50	49	48	0.71	1.11
	06.04.2022-15.04.2022													200	200	200	200	0.71	1.11
	16.04.2022-30.04.2022																		

## Tabela e Faturave te detyrime midis Furnizuesve dhe OST Sha per vitin 2022

### DISBALANCAT

Pale Pergjegjese Balancuese	JANAR		SHKURT		MARS		PRILL		4-mujori	
	Dis. Negative [MWh]	Dis. Pozitive [MWh]	Dis. Negative [MWh]	Dis. Pozitive [MWh]	Dis. Negative [MWh]	Dis. Pozitive [MWh]	Dis. Negative [MWh]	Dis. Pozitive [MWh]	Dis. Negative [MWh]	Dis. Pozitive [MWh]
KURUM INTERNATIONAL	298	33	863	645	1,142	351	1,203	549	3,506	1,578
DEVOLL HP	34	561	164	67	120	75	23	65	340	768
GEN-I	762	404	629	550	759	168	866	148	3,015	1,271
ENERGIA GAS & POWER ALBANIA	654	178	327	37	317	59	348	64	1,646	338
AYEN AS ENERGJI	284	107	30	73	64	49	117	104	495	333
GSA	2,749	28	1,925	131	4,701	370	1,418	521	10,793	1,049
Albanian Energy Supplier AES	1,355	79							1,355	79
Furnizuesi I Tregut të Lirë FTL (OSHEE Grup)	3,460	22,693	4,420	26,210	3,732	25,481	4,192	27,211	15,805	101,596
KESH (Pale Pergjegjese Balancuese)	308	2,462	759	4,118	512	2,936	344	5,500	1,924	15,017
EZ-5 ENERGY	129	8	24	18	20	5			173	31
BYLLIS Tec Ballsh (Pa kontrate Furnizimi)	71		61		66		15	-	213	-
KOSTT	2,703	12,584	2,683	10,333	1,137	14,239	4,576	8,666	11,099	45,821
OST - HUMBJET	5,028	1,506	1,278	2,229	1,619	2,889	14,685	2	22,610	6,625
Ofruesi i Sherbimit te Balancimit	Ulje Gjenerimi [MWh]	Rritje Gjenerimi [MWh]	Ulje Gjenerimi [MWh]	Rritje Gjenerimi [MWh]	Ulje Gjenerimi [MWh]	Rritje Gjenerimi [MWh]	Ulje Gjenerimi [MWh]	Rritje Gjenerimi [MWh]	Ulje Gjenerimi [MWh]	Rritje Gjenerimi [MWh]
Devoll HP Energjia Akt		117						18	-	135
Devoll HP Energjia Shtese Akt									-	-
Ayen AS Energji Energjia Akt									-	-
Ayen AS Energji Energjia Shtese Akt									-	-
KESH sh.a. Energjia Akt	6,925	4,233	8,165	3,878	8,206	4,472	6,127	4,668	29,424	17,251
KESH sh.a. Energjia Shtese Akt	2,431	175	4,569		1,740	-	2,289	141	11,029	316
<b>TOTALI</b>	<b>27,120</b>	<b>45,168</b>	<b>25,837</b>	<b>48,288</b>	<b>24,070</b>	<b>51,093</b>	<b>36,189</b>	<b>47,658</b>	<b>113,216</b>	<b>192,207</b>
<b>Disbalancat mujore [MWh]</b>	<b>18,048</b>		<b>22,452</b>		<b>27,022</b>		<b>11,469</b>		<b>78,992</b>	

Burimi: OST sha



Regjistri Pjesmarresve te Tregut (viti 2022) mujori (fundi i Prillit 2022)		4-		PRODHUES	P
				TREGTUES	T
				FURNIZUES	F
				FURNIZUES I SHËRBIMIT UNIVERSAL	FSHU
				SHPERNDARJE	SH
Nr	Emri i Subjektit	EIC Code	data e regjistrimit	Roli ne TEE	
1	Albanian Energy Supplier	54X-AEG-02-1603G	26.05.2015	T; F	
2	AXPO Albania	23X--150330-AA-K	28.1.2020	T; F	
3	Ayen AS Energji	23X--150416-A--N	17.12.2014	P; T; F	
4	Ayen Energy Trading	23X--140426-AY-W	04.05.2014	T; F	
5	Devoll Hydropower	23X--150409-DHP5	11.06.2015	T; F	
6	Energji Ashta	54X-HECASHTA-059	25.05.2012	P	
7	Energy Supply-AL	54X-ES-AL----12Y	25.02.2022	T; F	
8	GEN-I Tirana	23X---120709GEN0	31.01.2011	T; F	
9	Green Energy Trading Albania	23X--150702GE--3	01.07.2015	T	
10	Grupi Sistemeve Automatikë	22XGSA-----N	09.05.2011	T; F	
11	Korporata Elektroenergjitike Shqiptare	23X--130918APC-M	25.04.2011	P; T	
12	KURUM International	23X--131115KI--1	17.12.2013	P; T; F	
13	NOA Energy Trade	23X--150630-NE-6	10.03.2015	T; F	
14	Operatori i Sistemit të Shpërndarjes - OSSH sh.a.	54X-10101FT022OP	19.02.2020	SH	
15	Stravaj Energy	54X-STRAVAJ-E086	25.04.2014	P; T	
16	WENERG	54X-WENERG---10E	10.06.2015	P	
17	Energy Financing Team Tirana	54X-EFT-TIRANA-V	24.08.2017	T; F	
18	Alpiq Energy Albania	23X--141204AEA-T	29.04.2011	T; F	
19	URADRIN	54X-100ID101218J	10.08.2018	F	
20	Energia Gas and Power Albania shpk	23x-150309-LT-Y	22.10.2018	T; F	
21	RENRGY Trading Group	54X-10IRN102618R	12.11.2018	T,F	
22	Ener Trade shpk	54X-10 IET091118	21.12.2018	T; F	
23	Power and Gas Operations	54X-10IPG2307196	23.07.2019	T	
24	ENSCO Trading (Albania) sh.p.k	54X-110IESA1019G	02.12.2019	T	
25	KESH sh.a	23X--130918APC-M	16.12.2019	F	
26	Furnizuesi i Tregut të Lirë - FTL sh.a.	54X-1010IFT022OP	19.02.2020	T; F	
27	Furnizuesi i Shërbimit Universal - FSHU sh.a.	54X-0101IFSH022Q	19.02.2020	F	
28	EZ-5 Energy shpk	54X-11LKE250319U	25.03.2019	T;F	
29	Hec Arsti shpk	54X--101H11A-IJ	27.03.2021	P	
30	Hec Lajthiza Invest	54X-L-1011LTF-1S	15.03.2022	P	
31	Danske commodities Albania	23X--121120DCALG	30.10.2012	T	
32	Lëngarica & Energy shpk	54X-L-1010H-LENU	09.07.2021	P	
33	INFO-TELECOM	54X-I-1100-INFTI	06.08.2021	T	
34	TIRANA INTERNATIONAL DEVELOPMEN	54X-I-0101-TID-F	06.08.2021	T	
35	TEODORI 2003	54X-L-110-TE-ALU	13.08.2021	P	
36	DITEKO sh.p.k	54X-L-10101DIT-Y	13.09.2021	T	
37	S.P.E. GJADER sh.p.k	54X-L-1010-GJADJ	18.10.2021	P	
38	AlbESP Trading & Consulting sh.p.k	54X-I-10101AESPF	17.12.2021	F;T	
39	HEC Tervoli sh.p.k	54X-I-210101HTEI	23.12.2021	P	
40	HEC BISHNICA 1.2 sh.p.k	54X-I-10011HB12W	23.12.2021	P	
41	ENERGAL sh.p.k	54X-I-1111EN-ALF	31.12.2021	P;T	
42	EURON ENERGY sh.p.k	54X-I-0111EU-ENB	31.12.2021	T;P	
43	Hydro-Seta sh.p.k	54X-I-1111HS-015	31.12.2021	P;T	
44	Alb-Energy sh.p.k	54X-I-0101A1-EN3	31.12.2021	P;T	
45	ADA Solar SE shpk	54X-I-01001ADS-6	26.04.2022	T	

Transaksionet e energjise elektrike te Pjesemarrves te Tregut ne [MWh] per 2022

Nr.	Subjekti	Lloji transaksionit	Janar	Shkurt	Mars	Prill	Total [MWh]				
1	DEVOLLI HP	Shkembime Cross-Border	AL-GR Greece - IN	-2,366	-980	-10,159	-4,990	-18,495			
			AL-KS Kosovo - IN	-1,427	-2,375	-168	-1,116	-5,086			
			AL-ME Monte Negro - IN	-9,495	-11,229	-2,697	-5,288	-28,709			
			<b>Total IN</b>	<b>-13,288</b>	<b>-14,584</b>	<b>-13,024</b>	<b>-11,394</b>	<b>-52,290</b>			
			AL-GR Greece - OUT	31,280	40,317	19,024	26,516	117,137			
			AL-KS Kosovo - OUT	5,283	1,262	5,751	4,711	17,007			
		AL-ME Monte Negro - OUT	50,992	32,477	45,965	37,760	167,194				
		<b>Total OUT</b>	<b>87,555</b>	<b>74,056</b>	<b>70,740</b>	<b>68,987</b>	<b>301,338</b>				
		Transaksionet e brendshme	Prodhimi Devolli HP	85,560	61,642	57,716	57,353	262,271			
			<b>Total Prodhim</b>	<b>85,560</b>	<b>61,642</b>	<b>57,716</b>	<b>57,353</b>	<b>262,271</b>			
			Blerje ENERTRADE	-1				-1			
			Blerje ReNRGY	-1				-1			
			Blerje GEN-I				-240	-240			
			Shitje OST	11,295	2,170			13,465			
<b>Total transaksione</b>	<b>11,293</b>		<b>2,170</b>	<b>0</b>	<b>-240</b>	<b>13,223</b>					
2	AYEN Energy Trading		Shkembime Cross-Border	AL-GR Greece - IN	-46	-924	-3,218	0	-4,188		
		AL-KS Kosovo - IN		0	-1,098	-37	-1,853	-2,988			
		AL-ME Monte Negro - IN		-2	-1,435	-4,010	-2,584	-8,031			
		<b>Total IN</b>		<b>-48</b>	<b>-3,457</b>	<b>-7,265</b>	<b>-4,437</b>	<b>-15,207</b>			
		AL-GR Greece - OUT		0	0	0	6,646	6,646			
		AL-KS Kosovo - OUT		0	0	35	0	35			
		AL-ME Monte Negro - OUT	0	16	1,256	0	1,272				
		<b>Total OUT</b>	<b>0</b>	<b>16</b>	<b>1,291</b>	<b>6,646</b>	<b>7,953</b>				
		Transaksionet e brendshme	Shitje ENER TRADE	18,600		1,957		20,557			
			Shitje GEN-I	9,048		367		9,415			
			Blerje AYEN AS Energji	-27,600	-18,976	-6,975	-10,535	-64,086			
			Blerje KESH				-150	-150			
			Shitje AYEN AS Energji				1,968	1,968			
			Shitje KESH		17,496	5,650	630	23,776			
Shitje FTL			1,344	1,486	1,440	4,270					
Shitje EZ-5 Energy			1,680			1,680					
Shitje OST		1,897	3,489	4,438	9,824						
<b>Total transaksione</b>	<b>48</b>	<b>3,441</b>	<b>5,974</b>	<b>-2,209</b>	<b>7,254</b>						
3	AYEN AS Energji	Shkembime Cross-Border	AL-GR Greece - IN	0	0	0	0	0			
			AL-KS Kosovo - IN	0	0	-2	0	-2			
			AL-ME Monte Negro - IN	-2,068	-2,374	-775	-3,070	-8,287			
			<b>Total IN</b>	<b>-2,068</b>	<b>-2,374</b>	<b>-777</b>	<b>-3,070</b>	<b>-8,289</b>			
			AL-GR Greece - OUT	10,158	12,011	1,199	29,412	52,780			
			AL-KS Kosovo - OUT	5,176	0	146	0	5,322			
		AL-ME Monte Negro - OUT	6,353	3,171	15,202	10,538	35,264				
		<b>Total OUT</b>	<b>21,687</b>	<b>15,182</b>	<b>16,547</b>	<b>39,950</b>	<b>93,366</b>				
		Transaksionet e brendshme	Prodhimi HEC PESHQESH+HEC FANG	47,550.6	31,931.4	22,787.6	45,447.0	147,716.6			
			<b>Total Prodhim</b>	<b>47,550.6</b>	<b>31,931.4</b>	<b>22,787.6</b>	<b>45,447.0</b>	<b>147,716.6</b>			
			Shitje EZ-5 Energy	331.6	147.4	42.6		522			
			Shitje AYEN Energy Trading	27,600.0	18,976.0	6,975	10,535	64,086			
			Blerje AYEN Energy Trading				-1,968	-1,968			
			<b>Total transaksione</b>	<b>27,931.6</b>	<b>19,123.4</b>	<b>7,017.6</b>	<b>8,567.0</b>	<b>64,608</b>			
4	ENERGJI ASHTA		Shkembime Cross-Border	AL-GR Greece - IN					0		
				AL-KS Kosovo - IN					0		
		AL-ME Monte Negro - IN						0			
		<b>Total IN</b>		<b>0</b>	<b>0</b>	<b>0</b>	<b>0</b>	<b>0</b>			
		AL-GR Greece - OUT						0			
		AL-KS Kosovo - OUT						0			
		AL-ME Monte Negro - OUT					0				
		<b>Total OUT</b>	<b>0</b>	<b>0</b>	<b>0</b>	<b>0</b>	<b>0</b>				
		Transaksionet e brendshme	Prodhimi HEC ASHTA	23,561	18,223	21,369	16,718	79,871			
			<b>Total Prodhim</b>	<b>23,561</b>	<b>18,223</b>	<b>21,369</b>	<b>16,718</b>	<b>79,871</b>			
			Shitje FTL	23,561	18,223	21,369	16,718	79,871			
			<b>Total transaksione</b>	<b>23,561</b>	<b>18,223</b>	<b>21,369</b>	<b>16,718</b>	<b>79,871</b>			
			5	GEN-I	Shkembime Cross-Border	AL-GR Greece - IN	-8,178	-4,517	-26,120	-2,742	-41,557
						AL-KS Kosovo - IN	-21,333	-10,426	-5,100	-11,748	-48,607
AL-ME Monte Negro - IN	-36,801					-40,089	-11,610	-43,582	-132,082		
<b>Total IN</b>	<b>-66,312</b>					<b>-55,032</b>	<b>-42,830</b>	<b>-58,072</b>	<b>-222,246</b>		
AL-GR Greece - OUT	21,215	18,383				6,583	42,532	88,713			
AL-KS Kosovo - OUT	4,553	2,865				8,791	6,664	22,873			
AL-ME Monte Negro - OUT	3,552	3,047			11,664	4,302	22,565				
<b>Total OUT</b>	<b>29,320</b>	<b>24,295</b>			<b>27,038</b>	<b>53,498</b>	<b>134,151</b>				
Transaksionet e brendshme	Shitje Konsumatoreve te Kualifikuar	7,602			9,369	10,218	9,826	37,015			
	Blerje GSA					-240		-240			
	Shitje Ener Trade	16,062			998			17,060			
	Blerje Ener Trade						-58	-58			
	Shitje Devoll HPP						240	240			
	Shitje OST				1,680	2,016	2,376	6,072			
	Blerje AYEN Energy Trading				-367	-367					
	Shitje KESH	13,680	19,800	4,205		37,685					
Blerje KURUM	-352	-1,110	-40	-7,810	-9,312						
<b>Total transaksione</b>	<b>36,992</b>	<b>30,737</b>	<b>15,792</b>	<b>4,574</b>	<b>88,095</b>						
6	GSA	Shkembime Cross-Border	AL-GR Greece - IN	0	-2,520	-1,810	-90	-4,420			
			AL-KS Kosovo - IN	-21,630	-38,014	-28,334	-28,158	-116,136			
			AL-ME Monte Negro - IN	-25,577	-36,726	-11,114	-14,294	-87,711			
			<b>Total IN</b>	<b>-47,207</b>	<b>-77,260</b>	<b>-41,258</b>	<b>-42,542</b>	<b>-208,267</b>			
			AL-GR Greece - OUT	0	820	160	2,682	3,662			
			AL-KS Kosovo - OUT	28,560	421	0	1,200	30,181			
		AL-ME Monte Negro - OUT	0	0	0	0	0				
		<b>Total OUT</b>	<b>28,560</b>	<b>1,241</b>	<b>160</b>	<b>3,882</b>	<b>33,843</b>				
		Transaksionet e brendshme	Shitje Konsumatoreve te Kualifikuar	15,979	29,422	27,568	41,743	114,712			
			Shitje OST		720	1,834	955	3,509			
			Shitje KESH	33,160	66,040	12,420	1,460	113,080			
			Blerje KESH				-2,448	-2,448			
			Blerje KURUM	-30,492	-20,163	-924	-3,050	-54,629			
			Blerje ReNRGY				-40	-40			
Shitje GENI				240		240					
<b>Total transaksione</b>	<b>18,647</b>		<b>76,019</b>	<b>41,098</b>	<b>38,660</b>	<b>174,424</b>					
7	DANSKE COMMODITIES	Shkembime Cross-Border	AL-GR Greece - IN	-11,572	-10,760	-32,250	-1,629	-56,211			
			AL-KS Kosovo - IN	-14,552	-23,414	-14,194	-15,984	-68,144			
			AL-ME Monte Negro - IN	-18,663	-14,022	-13,300	-33,003	-78,988			
			<b>Total IN</b>	<b>-44,787</b>	<b>-48,196</b>	<b>-59,744</b>	<b>-50,616</b>	<b>-203,343</b>			
			AL-GR Greece - OUT	30,161	24,108	20,957	44,794	120,020			
			AL-KS Kosovo - OUT	3,001	5,671	10,824	1,484	20,980			
		AL-ME Monte Negro - OUT	9,345	7,771	23,863	4,490	45,469				
		<b>Total OUT</b>	<b>42,507</b>	<b>37,550</b>	<b>55,644</b>	<b>50,768</b>	<b>186,469</b>				
		Transaksionet e brendshme	Shitje ReNRGY	420				420			
			Shitje OST		2,670		1,281	3,951			
			Blerje ENER TRADE				-783	-783			
			Blerje KESH				-2,700	-2,700			
			Shitje KESH	1,860	7,976	4,100	2,050	15,986			
			<b>Total transaksione</b>	<b>2,280</b>	<b>10,646</b>	<b>4,100</b>	<b>-152</b>	<b>16,874</b>			

9	NOA	Shkembime Cross-Border	AL-GR Greece - IN	-13,102	-13,650	-4,417	-230	-31,399			
			AL-KS Kosovo - IN	-16,057	-6,460	-6,204	-29,850	-58,571			
			AL-ME Monte Negro - IN	-530	-2,285	-366	-4,368	-7,549			
			<b>Total IN</b>	<b>-29,689</b>	<b>-22,395</b>	<b>-10,987</b>	<b>-34,448</b>	<b>-97,519</b>			
			AL-GR Greece - OUT	2,017	1,341	3,111	28,059	34,528			
			AL-KS Kosovo - OUT	10,029	661	725	480	11,895			
			AL-ME Monte Negro - OUT	0	0	0	80	80			
		<b>Total OUT</b>	<b>12,046</b>	<b>2,002</b>	<b>3,836</b>	<b>28,619</b>	<b>46,503</b>				
		Transaksionet e brendshme	Shitje FTL	2,976	2,688	2,972	2,880	11,516			
			Shitje KESH		16,800	1,680	2,981	21,461			
			Blerje KESH				-1,920	-1,920			
			Shitje Energia Gas and Power	1,275	905	1,443	1,096	4,719			
			Shitje OST			1,056	792	1,848			
			Shitje AES	13,392				13,392			
<b>Total transaksione</b>	<b>17,643</b>		<b>20,393</b>	<b>7,151</b>	<b>5,829</b>	<b>51,016</b>					
10	KURUM INTERNATIONAL	Shkembime Cross-Border	AL-GR Greece - IN					0			
			AL-KS Kosovo - IN					0			
			AL-ME Monte Negro - IN					0			
			<b>Total IN</b>	<b>0</b>	<b>0</b>	<b>0</b>	<b>0</b>	<b>0</b>			
			AL-GR Greece - OUT					0			
			AL-KS Kosovo - OUT					0			
			AL-ME Monte Negro - OUT					0			
		<b>Total OUT</b>	<b>0</b>	<b>0</b>	<b>0</b>	<b>0</b>	<b>0</b>				
		Prodhimi/Konsumi	Prodhim HEC-et	48,982	23,349	34,097	47,492	153,920			
			<b>Total Prodhim</b>	<b>48,982</b>	<b>23,349</b>	<b>34,097</b>	<b>47,492</b>	<b>153,920</b>			
			Shitje Konsumatoreve te Kualifikuar	1770	21,786	32,253	33,363	89,172			
			Shitje GSA	30,492	20,163	924	3,050	54,629			
			Blerje Ener Trade		-19,710			-19,710			
			Shitje Ener Trade	16,368		880	3,269	20,517			
Shitje GEN-I	352		1,110	40	7,810	9,312					
<b>Total transaksione</b>	<b>48,982</b>	<b>23,349</b>	<b>34,097</b>	<b>47,492</b>	<b>153,920</b>						
11	ALPIQ	Shkembime Cross-Border	AL-GR Greece - IN	-5,315	-1,701	-16,083	-674	-23,773			
			AL-KS Kosovo - IN	0	0	0	0	0			
			AL-ME Monte Negro - IN	-13,619	-10,962	-383	-4,160	-29,124			
			<b>Total IN</b>	<b>-18,934</b>	<b>-12,663</b>	<b>-16,466</b>	<b>-4,834</b>	<b>-52,897</b>			
			AL-GR Greece - OUT	13,619	10,962	538	4,140	29,259			
			AL-KS Kosovo - OUT	0	0	0	0	0			
			AL-ME Monte Negro - OUT	5,315	1,701	15,928	694	23,638			
		<b>Total OUT</b>	<b>18,934</b>	<b>12,663</b>	<b>16,466</b>	<b>4,834</b>	<b>52,897</b>				
		Transaksionet e brendshme	Shitje					0			
			Blerje					0			
			<b>Total transaksione</b>	<b>0</b>	<b>0</b>	<b>0</b>	<b>0</b>	<b>0</b>			
			12	AXPO ALBANIA	Shkembime Cross-Border	AL-GR Greece - IN	0	0	0	0	0
						AL-KS Kosovo - IN	-290	0	0	-1,372	-1,662
						AL-ME Monte Negro - IN	-1,275	-3,549	-240	-2,444	-7,508
<b>Total IN</b>	<b>-1,565</b>					<b>-3,549</b>	<b>-240</b>	<b>-3,816</b>	<b>-9,170</b>		
AL-GR Greece - OUT	1,565	3,549				240	3,816	9,170			
AL-KS Kosovo - OUT	0	0				0	0	0			
AL-ME Monte Negro - OUT	0	0				0	0	0			
<b>Total OUT</b>	<b>1,565</b>	<b>3,549</b>			<b>240</b>	<b>3,816</b>	<b>9,170</b>				
Transaksionet e brendshme	<b>Total transaksione</b>	<b>0</b>			<b>0</b>	<b>0</b>	<b>0</b>	<b>0</b>			
	13	EFT (Energy Financing Team) TIRANA			Shkembime Cross-Border	AL-GR Greece - IN	-2,606	-2,500	-2,422	0	-7,528
						AL-KS Kosovo - IN	-15,165	-21,748	-895	-9,875	-47,683
						AL-ME Monte Negro - IN	-9,352	-18,283	-2,076	-3,063	-32,774
						<b>Total IN</b>	<b>-27,123</b>	<b>-42,531</b>	<b>-5,393</b>	<b>-12,938</b>	<b>-87,985</b>
						AL-GR Greece - OUT	23,391	39,667	2,706	12,778	78,542
			AL-KS Kosovo - OUT	962		1,534	2,330	0	4,826		
AL-ME Monte Negro - OUT			2,770	1,330		357	160	4,617			
<b>Total OUT</b>			<b>27,123</b>	<b>42,531</b>	<b>5,393</b>	<b>12,938</b>	<b>87,985</b>				
<b>Total transaksione</b>			<b>0</b>	<b>0</b>	<b>0</b>	<b>0</b>	<b>0</b>				
14			AES (Albanian Energy Supplier)	Shkembime Cross-Border	AL-GR Greece - IN					0	
					AL-KS Kosovo - IN					0	
					AL-ME Monte Negro - IN					0	
					<b>Total IN</b>	<b>0</b>	<b>0</b>	<b>0</b>	<b>0</b>	<b>0</b>	
					AL-GR Greece - OUT					0	
	AL-KS Kosovo - OUT							0			
	AL-ME Monte Negro - OUT							0			
	<b>Total OUT</b>	<b>0</b>		<b>0</b>	<b>0</b>	<b>0</b>	<b>0</b>				
	Transaksionet e brendshme	Shitje Konsumatoreve te Kualifikuar		13,392				13,392			
		Blerje NOA		-13,392				-13,392			
		<b>Total transaksione</b>		<b>0</b>	<b>0</b>	<b>0</b>	<b>0</b>	<b>0</b>			
		16		ReNRGY	Shkembime Cross-Border	AL-GR Greece - IN	-41,139	-16,320	-27,718	-2,290	-87,467
						AL-KS Kosovo - IN	-2,280	-3,551	-990	-3,419	-10,240
						AL-ME Monte Negro - IN	-9,250	-5,847	-2,957	-12,794	-30,848
<b>Total IN</b>			<b>-52,669</b>			<b>-25,718</b>	<b>-31,665</b>	<b>-18,503</b>	<b>-128,555</b>		
AL-GR Greece - OUT	9,250		7,177			2,957	15,589	34,973			
AL-KS Kosovo - OUT	40,458		14,749			16,340	2,597	74,144			
AL-ME Monte Negro - OUT	680		1,572			10,198	527	12,977			
<b>Total OUT</b>	<b>50,388</b>		<b>23,498</b>		<b>29,495</b>	<b>18,713</b>	<b>122,094</b>				
Transaksionet e brendshme	Shitje KESH		2,700		2,220	2,130	270	7,320			
	Blerje KESH						-480	-480			
	Shitje GSA					40		40			
	Shitje Devoll HPP		1					1			
	Blerje Danske Commodities		-420					-420			
	<b>Total transaksione</b>		<b>2,281</b>		<b>2,220</b>	<b>2,170</b>	<b>-210</b>	<b>6,461</b>			
	17	ENERGIA GAS AND POWER ALBANIA	Shkembime Cross-Border	AL-GR Greece - IN	0				0		
AL-KS Kosovo - IN				0				0			
AL-ME Monte Negro - IN				0				0			
<b>Total IN</b>				<b>0</b>	<b>0</b>	<b>0</b>	<b>0</b>	<b>0</b>			
AL-GR Greece - OUT				0				0			
AL-KS Kosovo - OUT				0				0			
AL-ME Monte Negro - OUT				0				0			
<b>Total OUT</b>			<b>0</b>	<b>0</b>	<b>0</b>	<b>0</b>	<b>0</b>				
Transaksionet e brendshme			Shitje Konsumatoreve te Kualifikuar	1,275	905	1,443	1,096	4,719			
			Blerje Aven Energy Trading					0			
			Blerje GSA					0			
			Blerje NOA	-1,275	-905	-1,443	-1,096	-4,719			
			<b>Total transaksione</b>	<b>0</b>	<b>0</b>	<b>0</b>	<b>0</b>	<b>0</b>			
			18	EZ-5 ENERGY	Shkembime Cross-Border	AL-GR Greece - IN					0
	AL-KS Kosovo - IN								0		
AL-ME Monte Negro - IN								0			
<b>Total IN</b>	<b>0</b>	<b>0</b>				<b>0</b>	<b>0</b>	<b>0</b>			
AL-GR Greece - OUT								0			
AL-KS Kosovo - OUT								0			
AL-ME Monte Negro - OUT								0			
<b>Total OUT</b>	<b>0</b>	<b>0</b>			<b>0</b>	<b>0</b>	<b>0</b>				
Transaksionet e brendshme	Shitje Konsumatoreve te Kualifikuar	331.6			147.4	42.6		521.6			
	Shitje FTL							0.0			
	Shitje KESH				1,680.0			1,680.0			
	Blerje ReNRGY							0.0			
	<b>Total transaksione</b>	<b>331.6</b>			<b>147.4</b>	<b>42.6</b>	<b></b>	<b>521.6</b>			

			Blerje Ayen Energy Trading			-1,680.0				-1,680.0	
			Blerje AYEN AS Energji	-331.6	-147.4	-42.6				-521.6	
			Total transaksione	0	0	0	0	0	0	0	
19	ENSCO Trading	Shkembime Cross-Border	AL-GR Greece - IN						-147	-147	
			AL-KS Kosovo - IN						0	0	
			AL-ME Monte Negro - IN						0	0	
			Total IN	0	0	0		-147	-147		
			AL-GR Greece - OUT						0	0	
			AL-KS Kosovo - OUT						0	0	
		AL-ME Monte Negro - OUT						147	147		
		Total OUT	0	0	0		147	147			
		Transaksionet e brendshme									
		Total transaksione	0	0	0		0	0	0		
20	ENER TRADE	Shkembime Cross-Border	AL-GR Greece - IN	-21,964	-39,833	-34,140	0			-95,937	
			AL-KS Kosovo - IN	-11,619	-37,986	-34,377	-9,961			-93,943	
			AL-ME Monte Negro - IN	-23,957	-11,140	-8,978	-1,203			-45,278	
			Total IN	-57,540	-88,959	-77,495	-11,164			-235,158	
			AL-GR Greece - OUT	0	4,929	3,034	12,284			20,247	
			AL-KS Kosovo - OUT	44,414	15,715	7,060	1,109			68,298	
		AL-ME Monte Negro - OUT	5,040	0	4,786	1,063			10,889		
		Total OUT	49,454	20,644	14,880	14,456			99,434		
		Shitje OST	2,975	6,511	4,080				13,566		
		Shitje KESH	24,820	27,120					51,940		
		Blerje Ayen Energy Trading	-18,600		-1,957				-20,557		
		Shitje KURUM		19,710					19,710		
		Blerje KURUM	-16,368		-880	-3,269			-20,517		
		Shitje Devoli HPP	1						1		
		Shitje GENI				58			58		
		Shitje Danske				783			783		
		Blerje GENI	-16,062	-998					-17,060		
		Blerje INFO Telecom sh.p.k.(INFO TELECOM)				-600			-600		
		Blerje TIRANA INTERNATIONAL DEVELOPMENT sh.a.(TID)				-1,752			-1,752		
		Shitje INFO Telecom sh.p.k.(INFO TELECOM)	11,880	7,990	45,140				65,010		
Shitje TIRANA INTERNATIONAL DEVELOPMENT sh.a.(TID)	19,440	7,982	16,232	1,488			45,142				
Total transaksione	8,086	68,315	62,615	-3,292			135,724				
21	TIRANA INTERNATIONAL DEVELOPMENT sh.a.(TID)	Shkembime Cross-Border	AL-GR Greece - IN							0	
			AL-KS Kosovo - IN								0
			AL-ME Monte Negro - IN								0
			Total IN	0	0	0	0			0	
			AL-GR Greece - OUT								0
			AL-KS Kosovo - OUT								0
		AL-ME Monte Negro - OUT								0	
		Total OUT	0	0	0	0			0		
		Transaksionet e brendshme									
		Total transaksione	-19,440	-7,982	-16,232	-1,488			-45,142		
Shitje Ener Trade				1,752			1,752				
Blerje KESH		7,982	12,200	1,488			21,670				
Shitje KESH			-4,032				-4,032				
Shitje OST							19,440				
Shitje FTL	19,440						19,440				
Total transaksione	0	0	0	0			0				
22	INFO Telecom sh.p.k.	Shkembime Cross-Border	AL-GR Greece - IN	-24,980						-24,980	
			AL-KS Kosovo - IN	0							0
			AL-ME Monte Negro - IN	-5,326							-5,326
			Total IN	-30,306	0	0	0			-30,306	
			AL-GR Greece - OUT	4,694							4,694
			AL-KS Kosovo - OUT	24,401							24,401
		AL-ME Monte Negro - OUT	1,211							1,211	
		Total OUT	30,306	0	0	0			30,306		
		Transaksionet e brendshme									
		Total transaksione	-11,880	-7,990	-45,140	600			-65,010		
Shitje Ener Trade				600			600				
Shitje FTL	11,880						11,880				
Blerje KESH		7,990	45,140	-600			53,130				
Shitje KESH	19,440						19,440				
Total transaksione	0	0	0	0			0				
23	AlBESP Trading & Consulting shpk (AESPF)	Shkembime Cross-Border	AL-GR Greece - IN	-720	-540					-1,260	
			AL-KS Kosovo - IN	0	0					0	
			AL-ME Monte Negro - IN	0	0					-40	
			Total IN	-720	-540	0	-40			-1,300	
			AL-GR Greece - OUT	0	0					0	
			AL-KS Kosovo - OUT	0	0					0	
		AL-ME Monte Negro - OUT	0	0					0		
		Total OUT	0	0	0	0			0		
		Transaksionet e brendshme									
		Total transaksione	720	540	0	40			1,300		
Shitje KESH	720	540					1,300				
Total transaksione	720	540	0	40			1,300				
24	KESH sh.a.	Shkembime Cross-Border	AL-GR Greece - IN	-3,480	0	-12,472	-1,133			-17,085	
			AL-KS Kosovo - IN	-1,230	0	-480	-325			-2,035	
			AL-ME Monte Negro - IN	-33,330	-18,582	-32,976	-23,093			-107,981	
			Total IN	-38,040	-18,582	-45,928	-24,551			-127,101	
			AL-GR Greece - OUT	0	0	0	0			0	
			AL-KS Kosovo - OUT	4,080	0	2,654	19,528			26,262	
		AL-ME Monte Negro - OUT	840	0	0	1,800			2,640		
		Total OUT	4,920	0	2,654	21,328			28,902		
		Blerje AYEN ENERGY TRADING			-17,496	-5,650			-23,146		
		Blerje ENER TRADE	-24,820						-24,820		
		Blerje Danske Commodities	-1,860		-4,100	-2,050			-8,010		
		Blerje GSA	-33,160	-66,040	-12,420	-1,460			-113,080		
		Blerje GEN-I	-13,680	-19,800					-33,480		
		Blerje NOA Energy		-16,800		-2,981			-19,781		
		Blerje INFO Telecom				-45,140			-45,140		
		Blerje Tirana International Development				-12,200			-13,688		
		Blerje ReNRGY	-2,700			-270			-2,970		
		Shitje Ayen Energy Trading				150			150		
		Shitje Danske Commodities				2,700			2,700		
		Shitje GSA				2,448			2,448		
Shitje NOA Energy				1,920			1,920				
Shitje ReNRGY				480			480				
Total transaksione	-76,220	-120,136	-79,510	-8,249			-284,115				

Burimi: OST sha / OT